



Supplement of

Comparing the transport-limited and ξ - q models for sediment transport

Jean Braun

Correspondence to: Jean Braun (jbraun@gfz-potsdam.de)

The copyright of individual parts of the supplement might differ from the article licence.

Supplementary Material

Response to instantaneous variations in incoming sedimentary flux and relative precipitation rate.

In the following figures, we show the response of the system to:

1. a step decrease in the incoming sedimentary flux (Figure S1);
2. an increase in relative precipitation rate (Figure S2);
3. and, a decrease in relative precipitation rate(Figure S3)

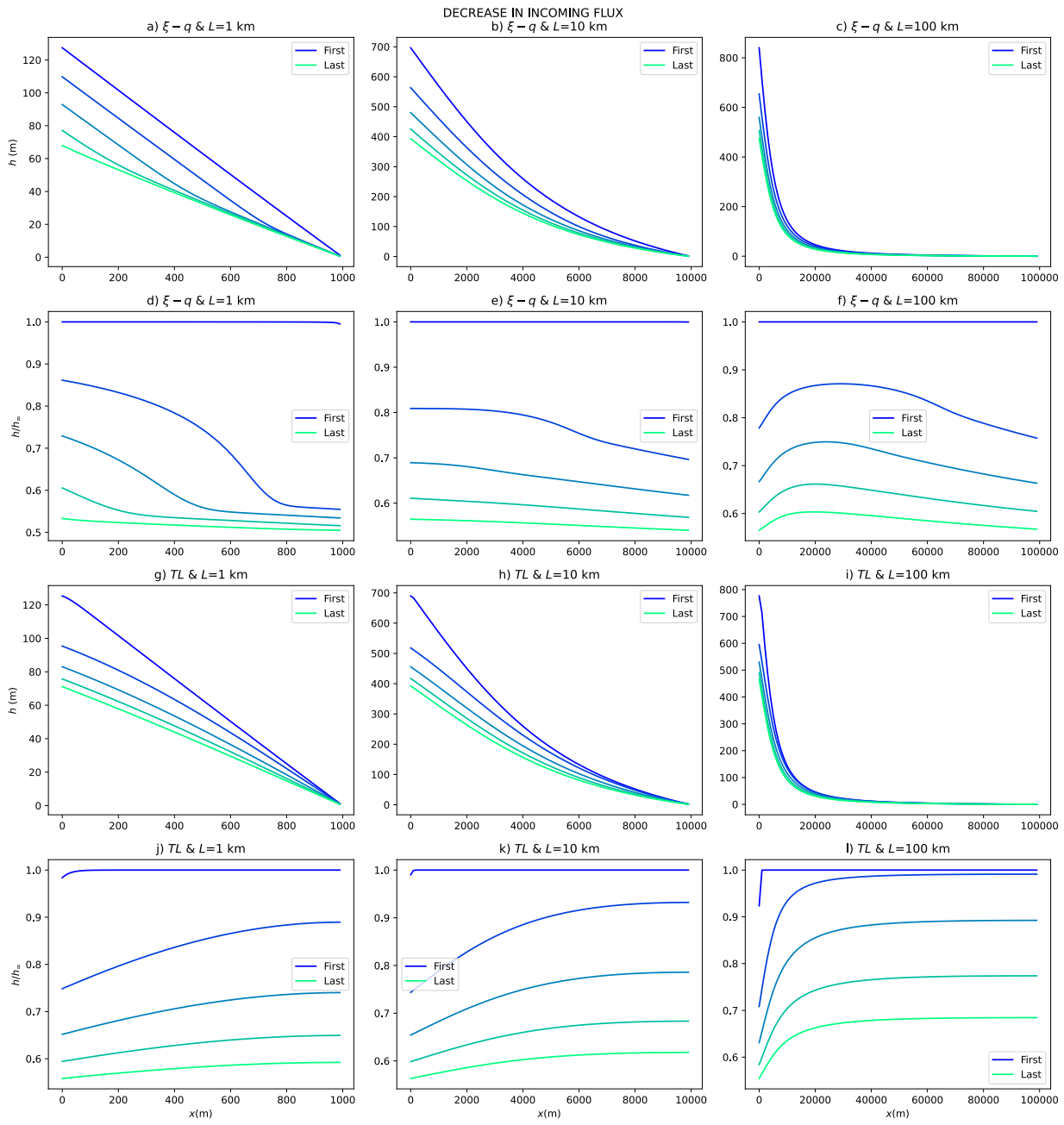


Figure S1: Same as Figure 9 but for a decrease in incoming sedimentary flux by a factor of 2.

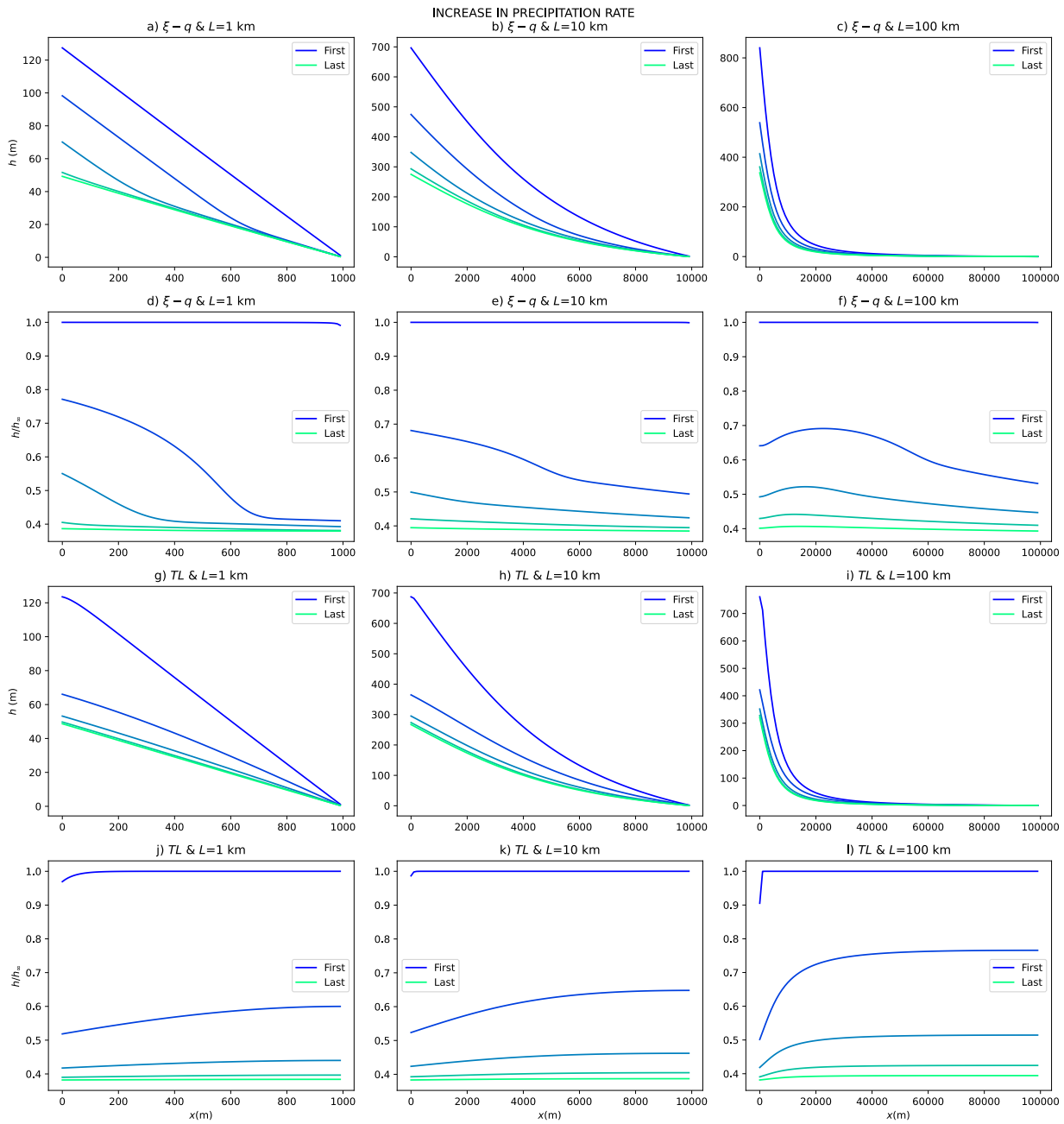


Figure S2: Same as Figure 9 but for an increase in relative precipitation rate by a factor of 2.

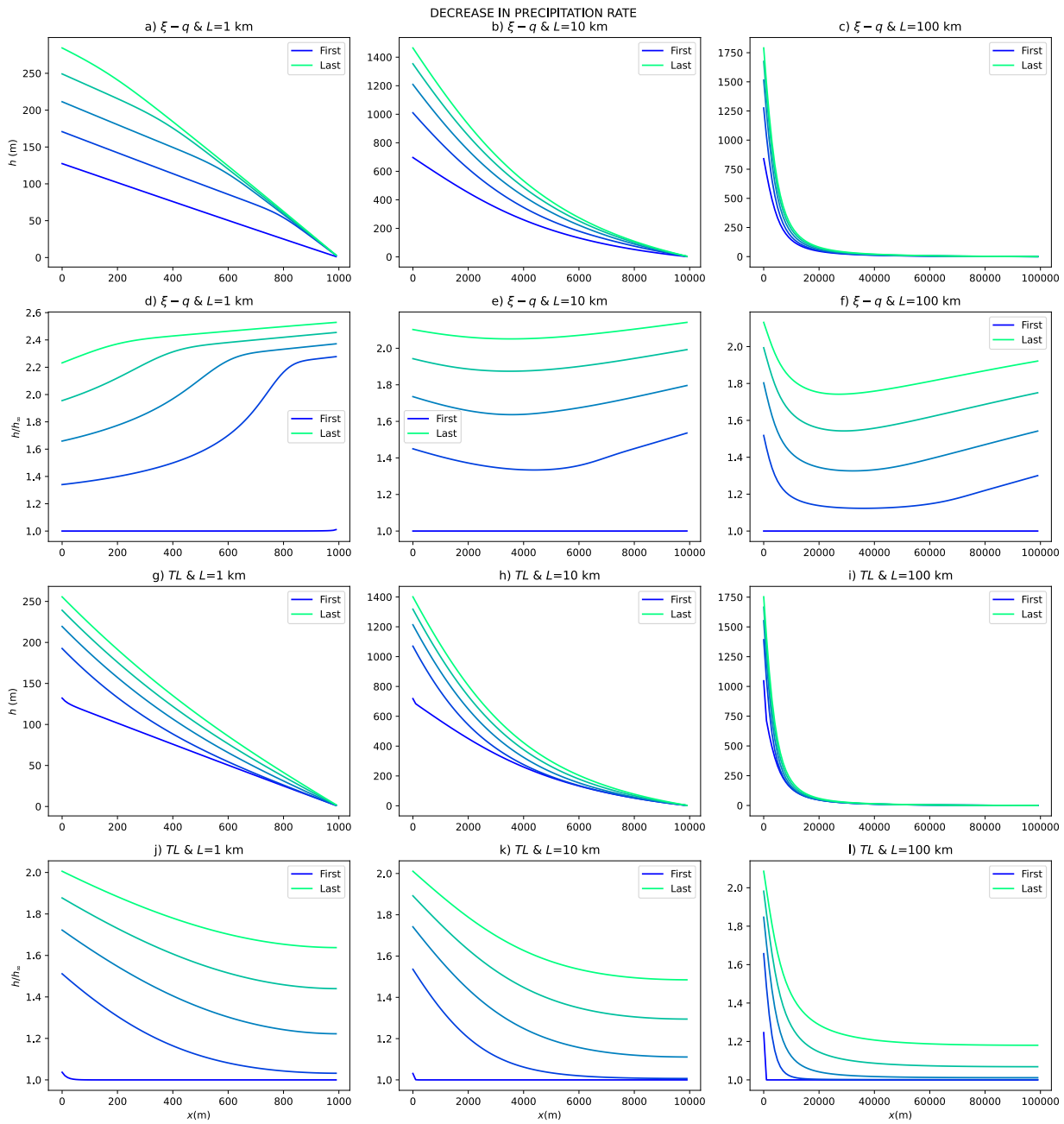


Figure S3: Same as Figure 9 but for a decrease in relative precipitation rate by a factor of 2.