



Supplement of

Geology and vegetation control landsliding on forest-managed slopes in scarplands

Daniel Draebing et al.

Correspondence to: Daniel Draebing (d.draebing@uni-bayreuth.de)

The copyright of individual parts of the supplement might differ from the article licence.

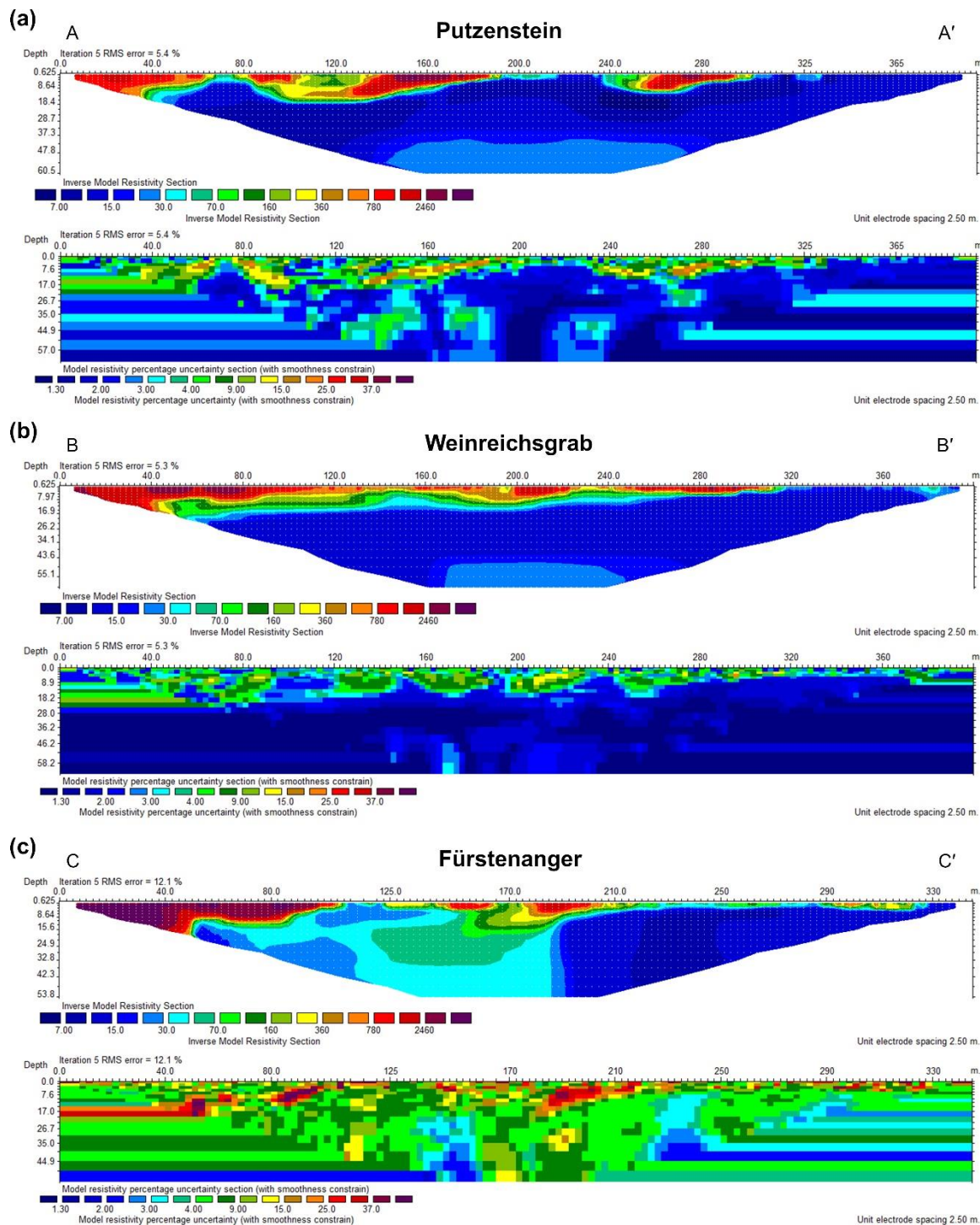


Figure S1: Model uncertainty of geoelectric models at (a) Putzenstein, (b) Weinreichsgrab and (c) Fürstenanger.

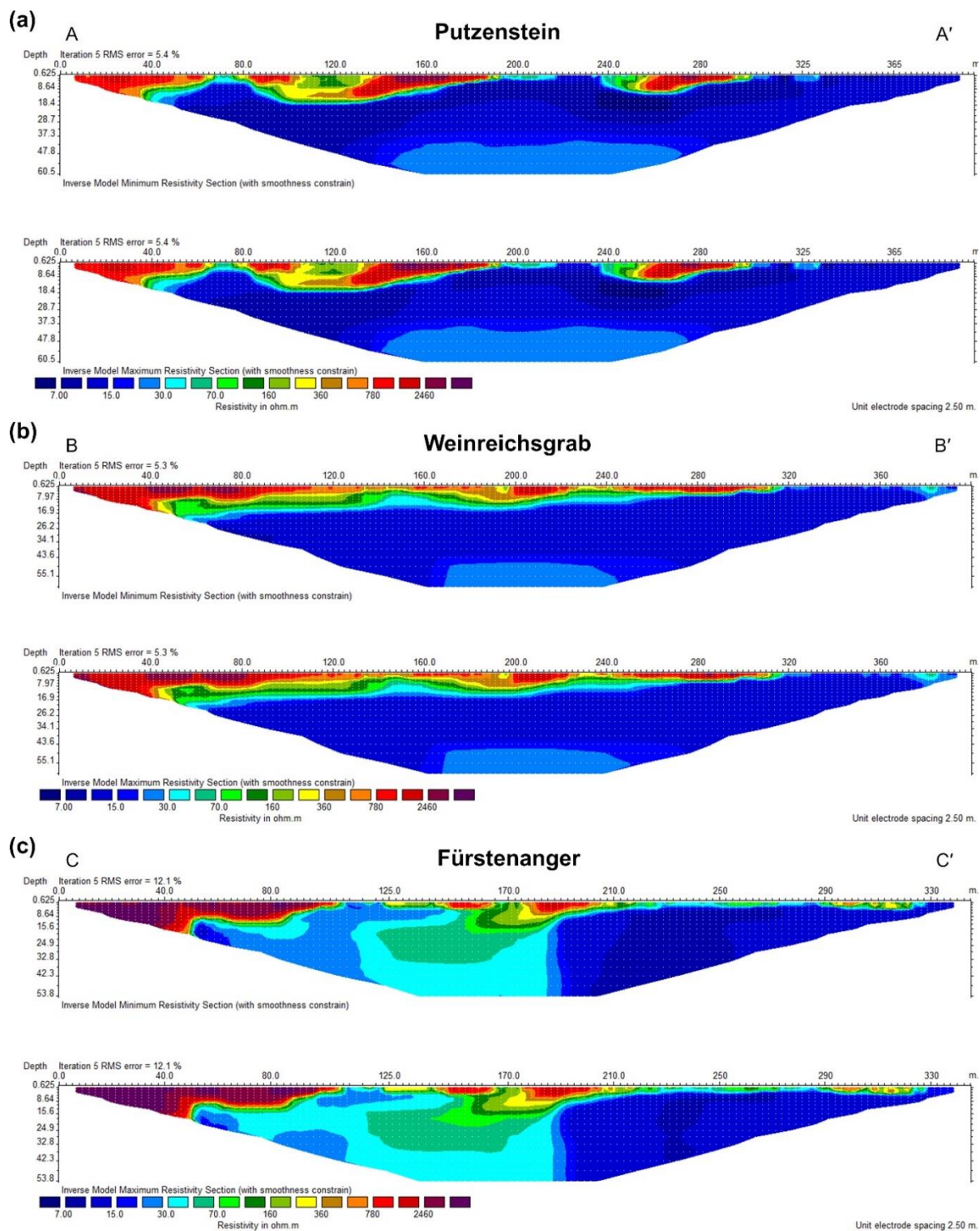


Figure S2: Inverse model minimum and maximum resistivity of geoelectric models at (a) Putzenstein, (b) Weinreichsgrab and (c) Fürstenanger.

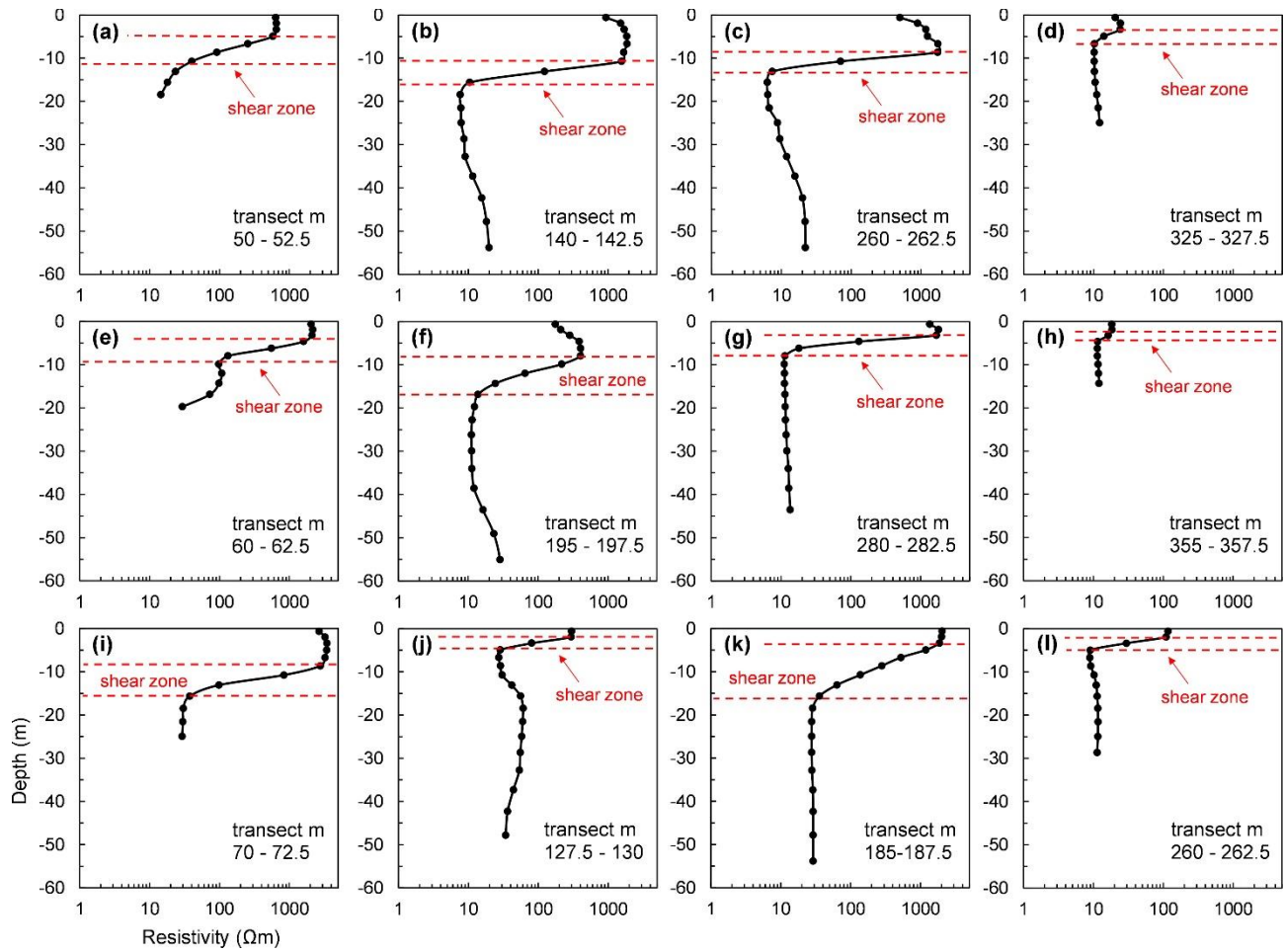


Figure S3: 1D virtual boreholes of geoelectric models at (a) Putzenstein, (b) Weinreichsgrab and (c) Fürstenanger.