



Supplement of

Use of simple analytical solutions in the calibration of shallow water equation debris flow models

Riccardo Bonomelli et al.

Correspondence to: Riccardo Bonomelli (riccardo.bonomelli@unibs.it)

The copyright of individual parts of the supplement might differ from the article licence.

1 Photo survey of the debris flow occurred in the Blè basin

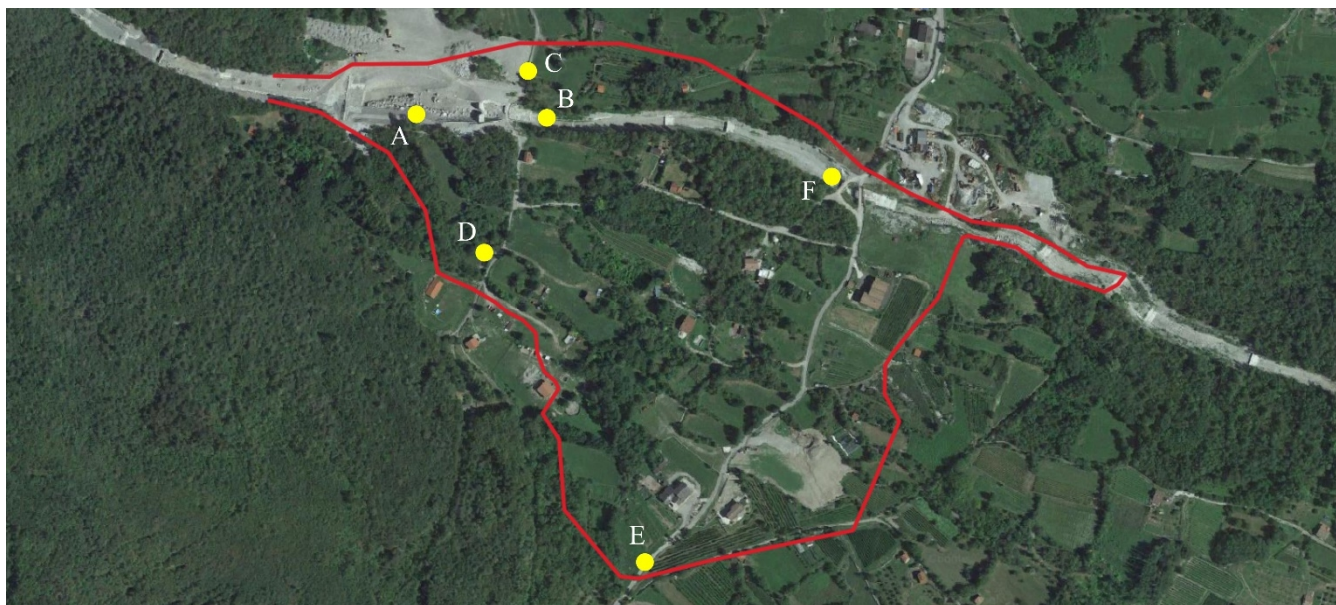


Figure S1. Map showing some photos taken after the debris flow event, (© Google Earth 2019).



5 **Figure S2. Photo A (© Regione Lombardia 2021).**



Figure S3. Photo B (© Regione Lombardia 2021).



Figure S4. Photo C (© Regione Lombardia 2021).



10

Figure S5. Photo D. (© Pilotti 2021).



Figure S6. Photo E (© Pilotti 2021).



15 **Figure S7. Photo F (© Regione Lombardia 2021).**