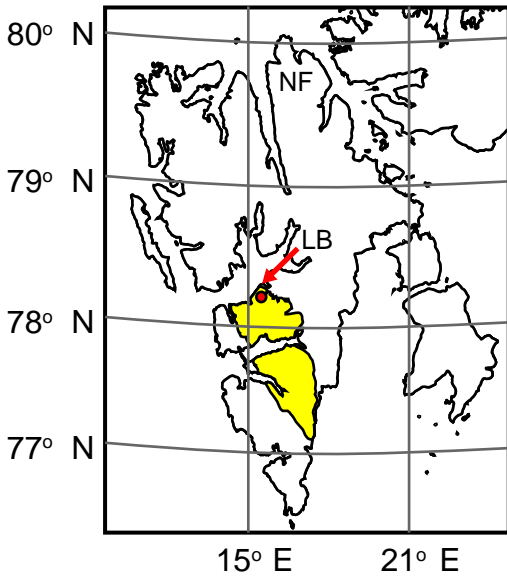
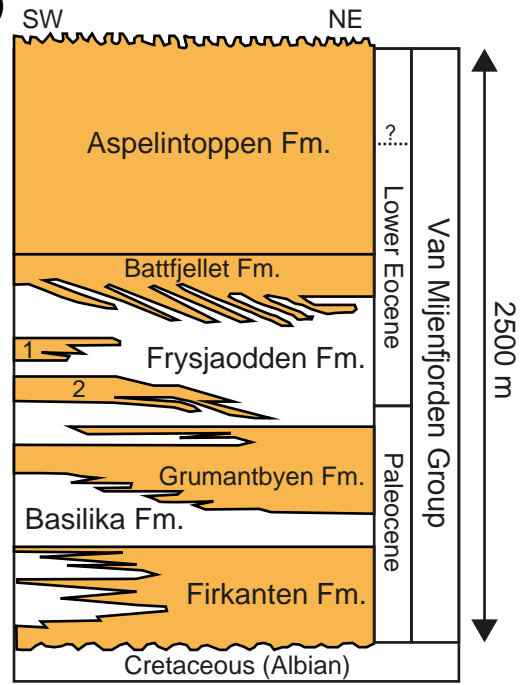
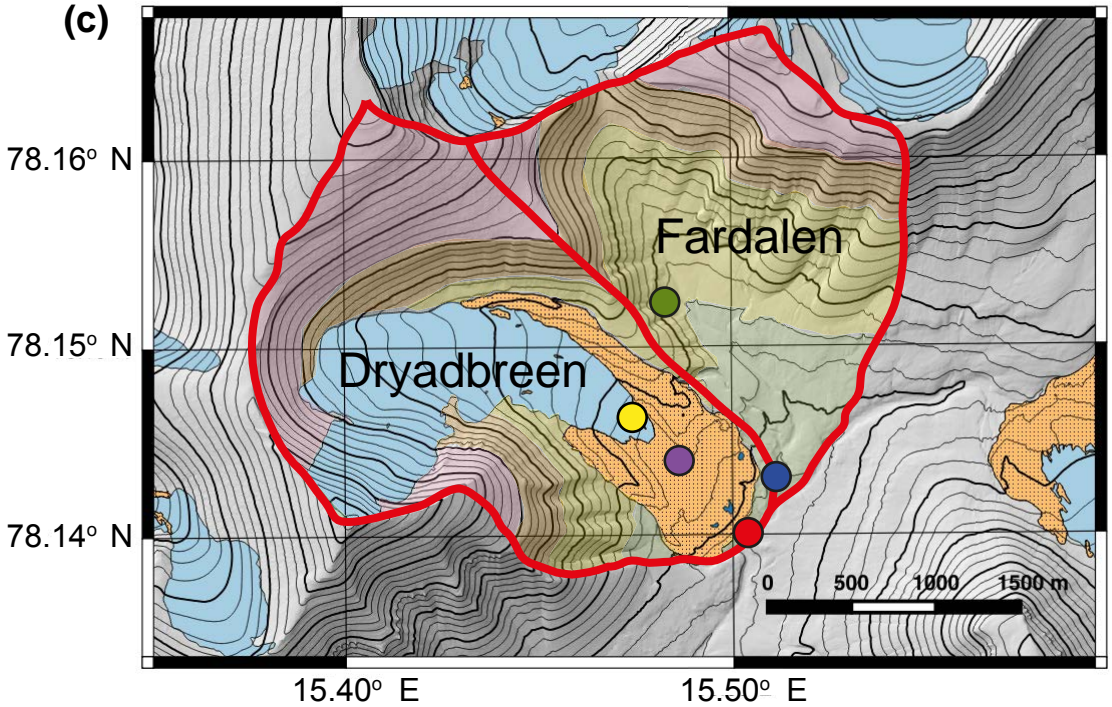


(a)

- Central Basin
- LB = Longyearbyen
- NF = Ny Friesland
- Study location

(b)

- 1 = Gilsonryggen Mb.
- 2 = Holldenderdalen Fm.
- Sandstone dominated
- Shale dominated

(c)

- Ice
- Moraine

Van Mijenfjorden Group (Paleocene–Eocene)

- Aspeli toppen Formation: sandstone, siltstone and shale, with thin coal seams
- Battfjellet Formation: sandstone, subordinate siltstone and shale
- Frysjaodden Formation: dark shale and siltstone, subordinate sandstone
- Grumantbyen Formation: sandstone including shale