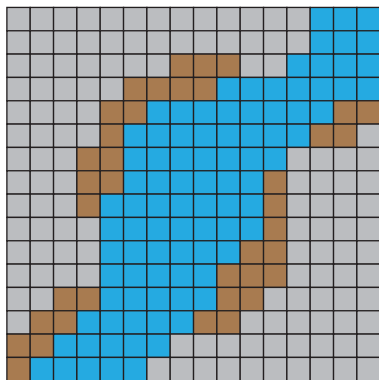
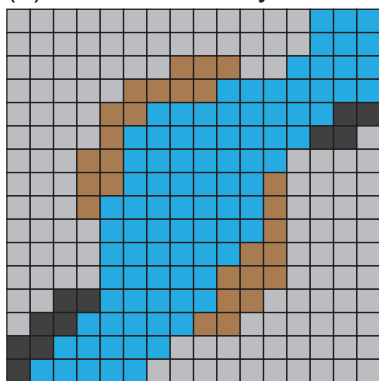


## Workflow

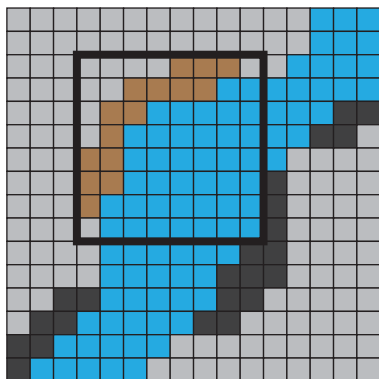
(a) Identify banks by slope



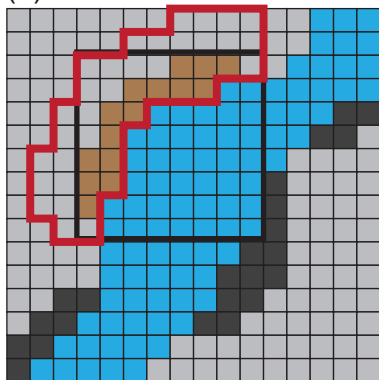
(b) Exclude banks by area



(c) Exclude banks by shear stress



(d) Erode banks



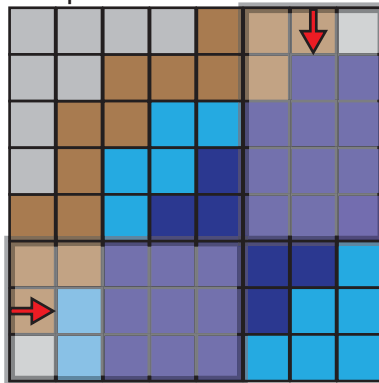
- Dry cells
- Excluded bank features
- Wet cells
- Wet cells above shear threshold

## Detail views

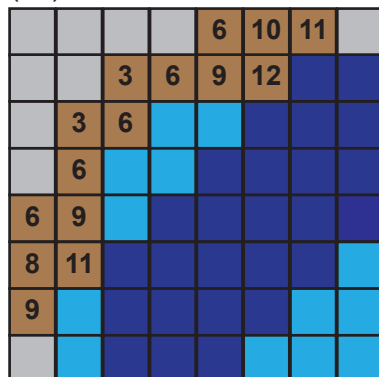
(a1) Slope values



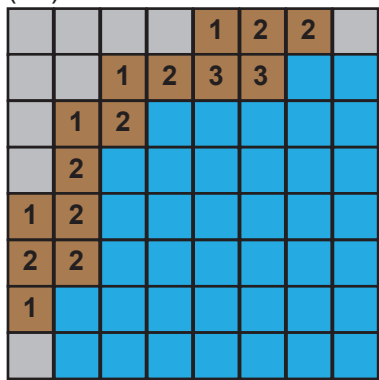
(c1) Shear stress sample windows



(c2) Shear stress values



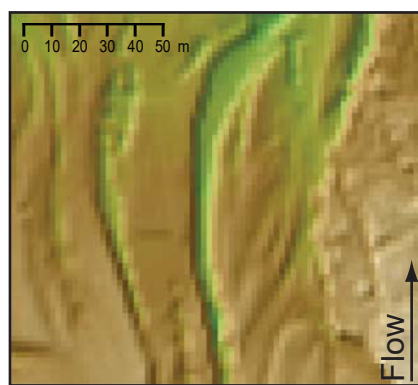
(d1) Lateral erosion extents



- Shear stress sampling window
- Bank features
- Detail view
- Total bank erosion extent

## Example MORPHED output, 3 floods

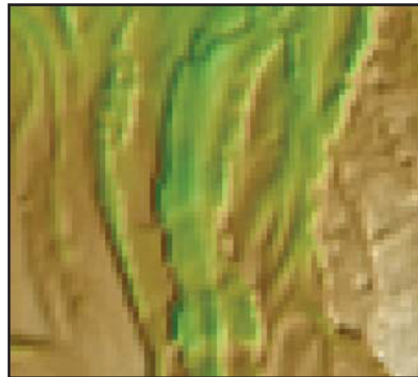
Initial surface



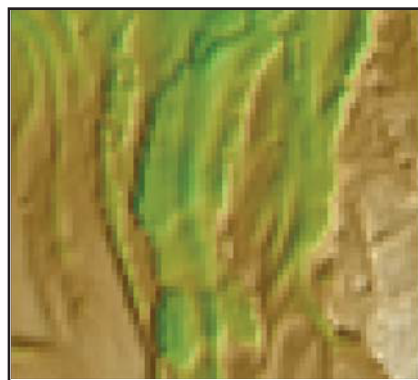
Flood 1–75 m s<sup>-3</sup>



Flood 2–258 m s<sup>-3</sup>



Flood 3–75 m s<sup>-3</sup>



- Cells above shear threshold
- Sample cell, indicates aspect