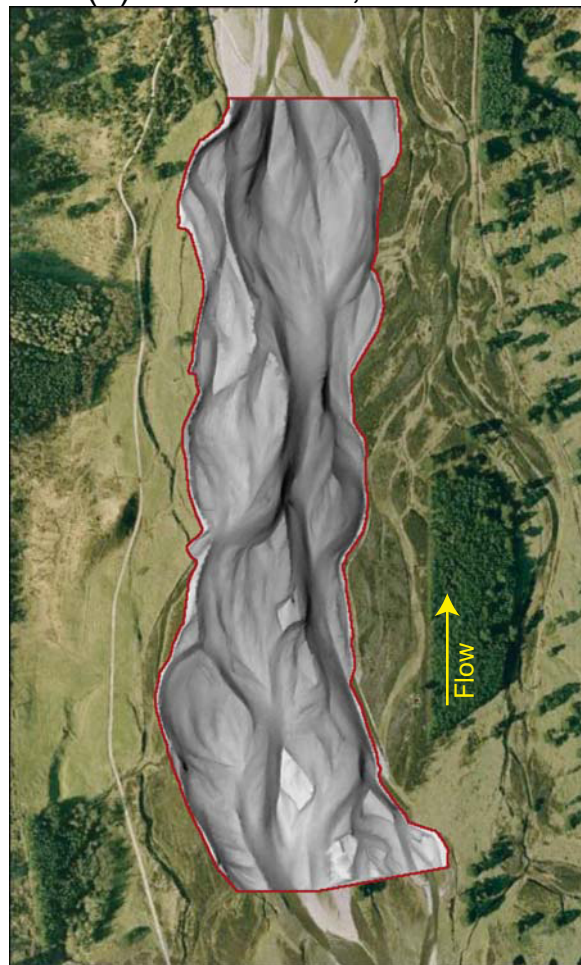


(a) Rees River, New Zealand



0 200 400 600 800 m

(b) River Feshie, Scotland



0 50 100 150 200 m

***Available data: Rees***

Event–annual scale:

- Resurveys following 10 events over a 2-year time span
- 15-minute hydrograph record
- Existing Delft3D hydraulic modeling (Williams et al., 2013)

***Available data: Feshie***

Annual–centennial scale:

- Resurveys 2003–2007 & 2013
- 15-minute hydrograph record
- Aerial photographs since 1946
- Planform maps since 1869