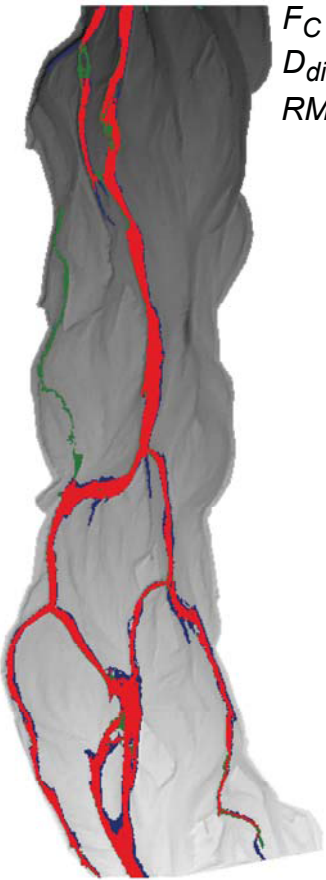
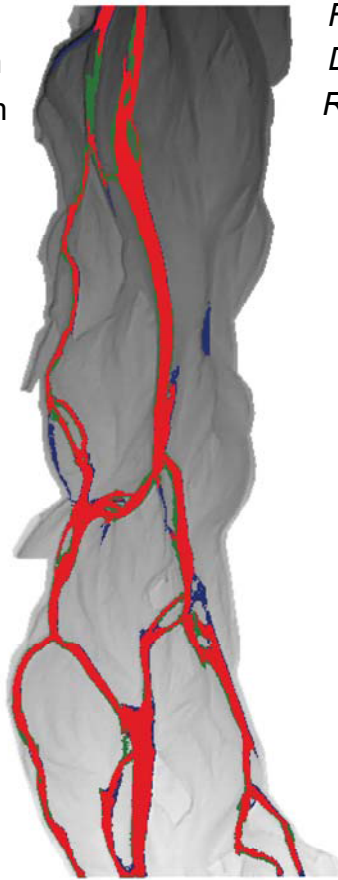


2003

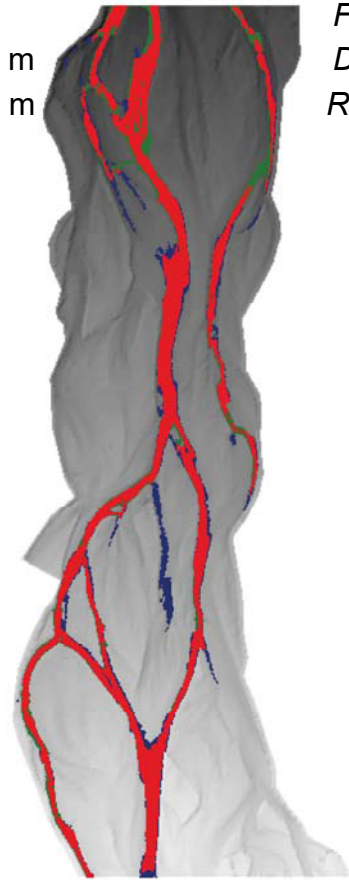
$F_C = 71 \%$
 $D_{diff} = 0.03 \text{ m}$
 $RMS = 0.06 \text{ m}$

**2004**

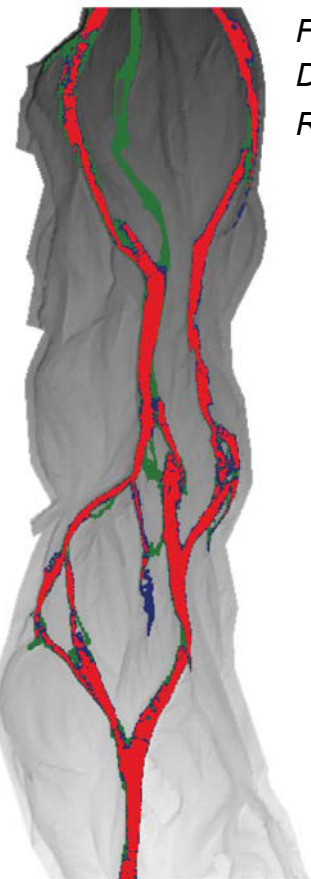
$F_C = 74 \%$
 $D_{diff} = 0.04 \text{ m}$
 $RMS = 0.09 \text{ m}$

**2005**

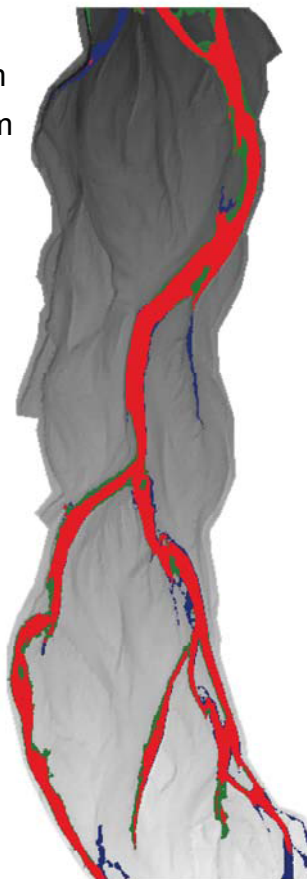
$F_C = 81 \%$
 $D_{diff} = 0.04 \text{ m}$
 $RMS = 0.07 \text{ m}$


**2006**


$F_C = 94 \%$
 $D_{diff} = 0.04 \text{ m}$
 $RMS = 0.08 \text{ m}$

**2007**

$F_C = 86 \%$
 $D_{diff} = 0.04 \text{ m}$
 $RMS = 0.09 \text{ m}$



 Predicted and observed wet

 Predicted wet

 Observed wet

0 50 100 150 200 m

