

Supplement of Earth Surf. Dynam., 7, 77–86, 2019
<https://doi.org/10.5194/esurf-7-77-2019-supplement>
© Author(s) 2019. This work is distributed under
the Creative Commons Attribution 4.0 License.



Supplement of

Environmental signal shredding on sandy coastlines

Eli D. Lazarus et al.

Correspondence to: Eli D. Lazarus (e.d.lazarus@soton.ac.uk)

The copyright of individual parts of the supplement might differ from the CC BY 4.0 License.

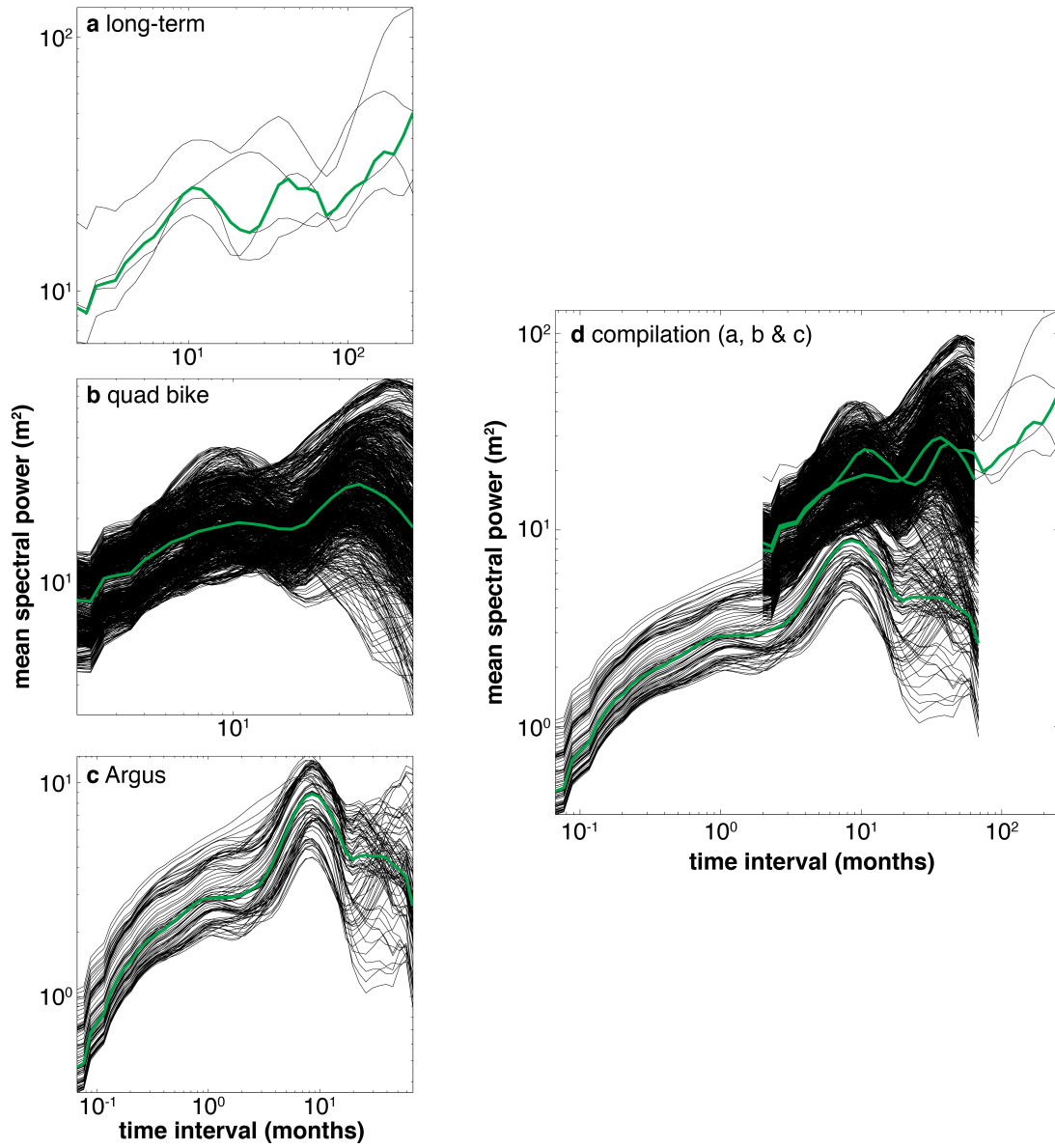


Figure S1. Plots of wavelet-derived power spectra for the absolute value of shoreline change at each position alongshore in the three datasets used in this study (Fig. 1a). Green lines indicate the median power spectrum in each set, which appear in the main article in Fig. 4 (thin grey lines).

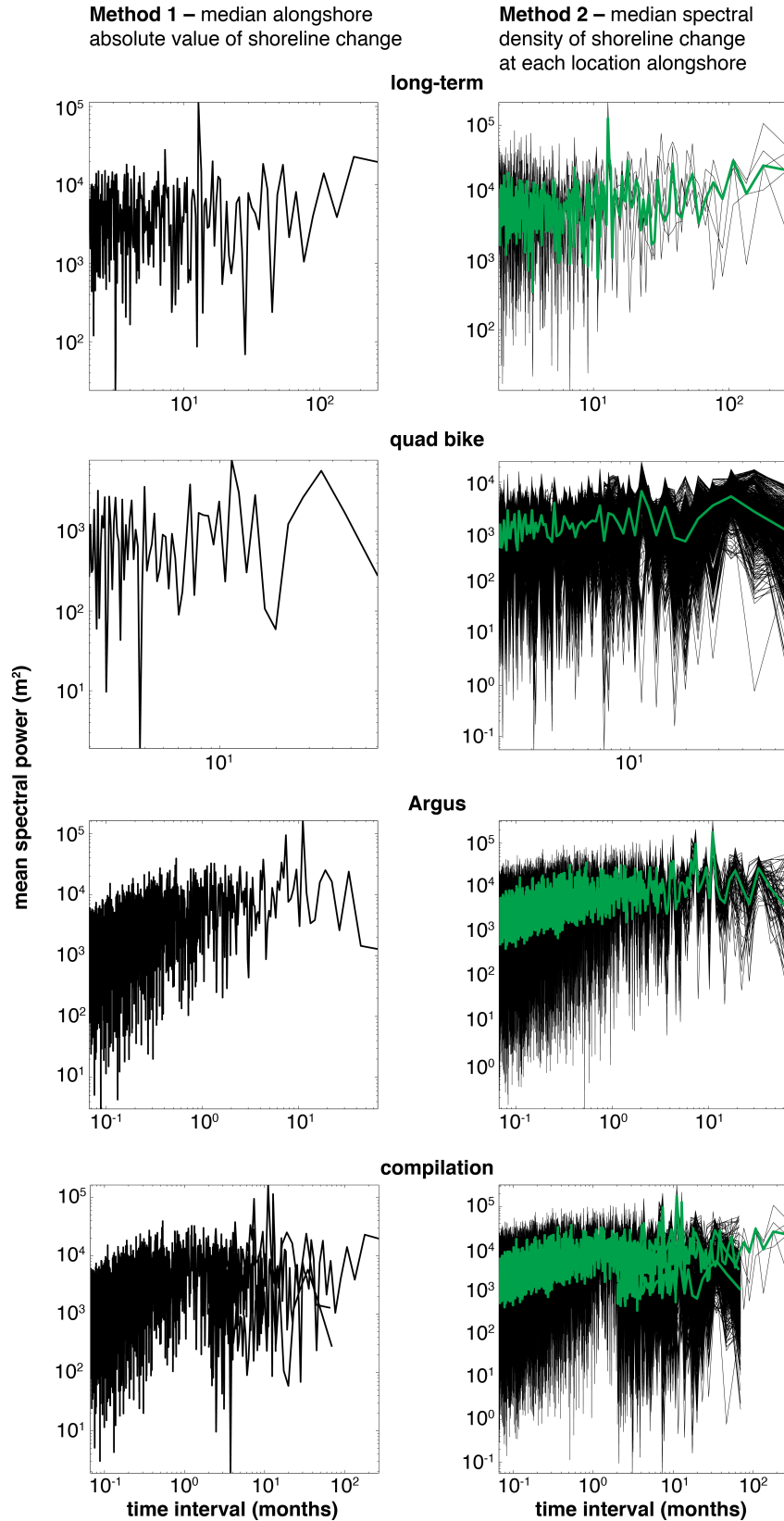


Figure S2. Plots showing an alternative method of spectral analysis using a Fast Fourier Transform, applied to the three datasets of shoreline position. The left column shows power spectra for the median alongshore absolute value of shoreline change at each time step. The right column shows the power spectrum of the absolute value of shoreline change at each position alongshore, along with the median power spectrum (green line).