



Supplement of

Seismic location and tracking of snow avalanches and slush flows on Mt. Fuji, Japan

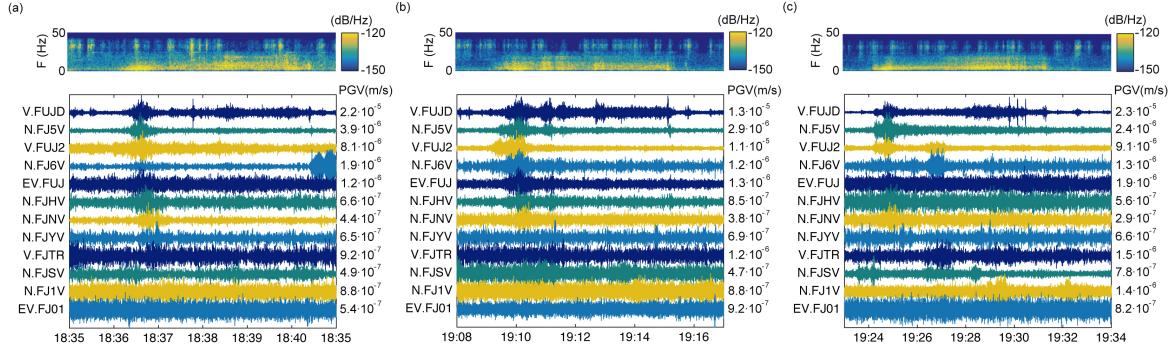
Cristina Pérez-Guillén et al.

Correspondence to: Cristina Pérez-Guillén (cris.perez.guillen@gmail.com)

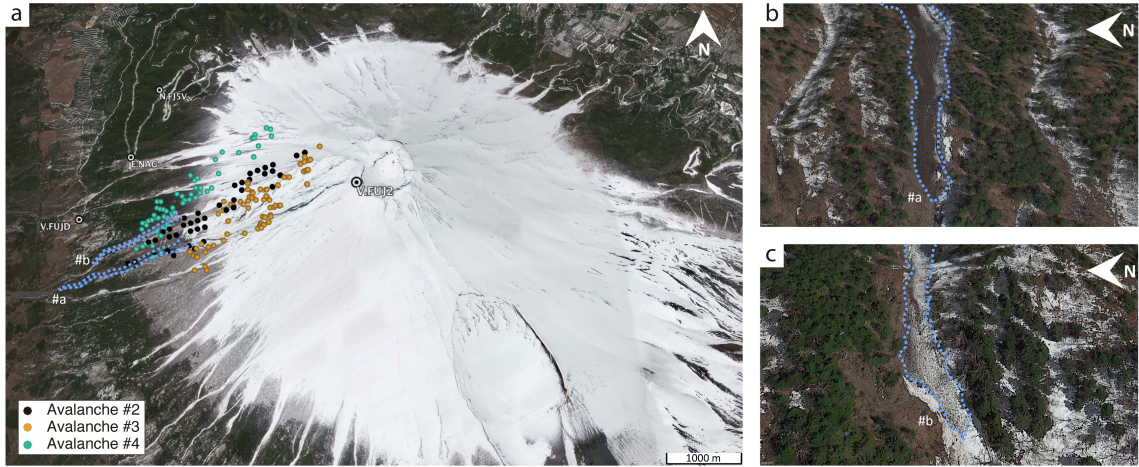
The copyright of individual parts of the supplement might differ from the CC BY 4.0 License.

Supplement

This supplementary file contains two figures (Sp. 1 and Sp. 2):



S1: Spectrogram (computed at V.FUJD station) and vertical seismograms generated by the three, not verified, snow avalanches released on 2014-03-13 (Table 1): avalanche #2 (a), avalanche #3 (b) and avalanche #4 (c). Each trace is normalized by its maximum amplitude (Peak Ground Velocity, PGV).



S2: (a) Historical image from ©Google Earth aerial images (Image credit: Landsat / Copernicus) of Mt. Fuji taken on 2014-04-7, approximately three weeks after avalanche #1. The image shows the ASL locations of the three avalanches (#2, #3 and #4 of Table 1), which are extended through Osawa valley and a northern parallel path of the W flank of Mt. Fu-ji. The blue lines show the observed avalanche deposits in the historical image. (b) Close up view of the avalanche deposits observed at path #a. (c) Close up view of the avalanche deposits observed at path #b.