

**Low-resolution
modelling of river
morphology**

M. Nones and
M. Guerrero

This discussion paper is/has been under review for the journal Earth Surface Dynamics (ESurfD).
Please refer to the corresponding final paper in ESurf if available.

Opportunities from low-resolution modelling of river morphology in remote parts of the world

M. Nones¹ and M. Guerrero²

¹Research Center for Constructions – Fluid Dynamics Unit, University of Bologna, Italy
²Hydraulic Laboratory, University of Bologna, Italy

Received: 6 September 2013 – Accepted: 18 September 2013 – Published: 1 October 2013

Correspondence to: M. Nones (michael.nones@unibo.it)

Published by Copernicus Publications on behalf of the European Geosciences Union.

Title Page

Abstract

Introduction

Conclusions

References

Tables

Figures

⏪

⏩

◀

▶

Back

Close

Full Screen / Esc

Printer-friendly Version

Interactive Discussion



Low-resolution modelling of river morphology

M. Nones and
M. Guerrero

Title Page

Abstract

Introduction

Conclusions

References

Tables

Figures

⏪

⏩

◀

▶

Back

Close

Full Screen / Esc

Printer-friendly Version

Interactive Discussion



Hec-Ras by US Army Corps of Engineers; the Full Equations (FEQ) model by US Geological Survey; the Sedimentation and River Hydraulics (SRH) 1-D by US Department of Interior-Bureau of Reclamation; the Telemac Mascaret 1-D by a European consortium based in France, Germany and UK; the Mike11 by Danish Hydraulic Institute; and the Sobek 1-D by Deltares (NL) are well tested codes for river engineering that apply the 1-D longitudinal simplification. It is worth noting that, while open source codes were optimized to specific applications, (e.g. the FEQ is particularly suited for simulations of unsteady flow in open channels network with a variety of control structures), commercial software packages were largely improved to easily integrate detailed data from Geographic Information Systems (GIS), boundary conditions from climate-hydrology models and for downscaling to more detailed simulations (i.e. 2-D and 3-D modelling). Albeit in the last decades 1-D and 2-D codes were provided with modelling of bed level changes to be coupled with hydraulic computations, the simulating of large rivers at watershed scale remains a difficult task because of involved space and time lengths ranging within 10^2 – 10^3 km and years, respectively (Di Silvio and Nones, 2013).

Sediment management in large rivers is particularly relevant when evaluating damming or climate changes impacts, as instance. This is most challenging in remote parts of the world, where frequent and detailed topographic surveys of river cross-sections are uncommon, which may largely limit the application of numerical codes. While conventional 1-D and 2-D morphodynamic models require detailed inputs describing initial morphology and boundary conditions, the code proposed here is able to describe the longitudinal evolution of a river reach at non-detailed spatial and temporal scales by using a basic database. To reduce computational effort and simulation results depending on field database (e.g. river channel bathymetry, detailed spatial distribution of alluvial deposition), a series of testable simplifications are introduced in the hydraulics equations, such as the kinematic propagation of the water flow and the Local Uniform Flow (LUF) hypothesis (Fasolato et al., 2011). Under these assumptions, it is possible to simulate river bed dynamics by implementing a simplified description of river morphology that can be derived from maps and satellite images. The use of satel-

Low-resolution modelling of river morphology

M. Nones and
M. Guerrero

Title Page

Abstract

Introduction

Conclusions

References

Tables

Figures

⏪

⏩

◀

▶

Back

Close

Full Screen / Esc

Printer-friendly Version

Interactive Discussion



it was observed a continuous and progressive oversimplification of the river channel planimetric morphology toward a lower width to depth ratio regardless the occurred oscillation in hydrology. Reasons of these different responses to the same climate variability were pointed out in alluvial planes, which noticeable enlarge and decreases in slope when passing from the Middle to Lower Parana. These morphology constrains together with driving increase of precipitations during the last part of the 20th century would have produced sediment deposition at secondary reaches and therefore the streamflow gathering in a single straight and deep reach. Although these channel divagations may be simulated with a 2-D morphodynamic model, the large scale morphology (i.e. river slope and width, sediment sorting) was modelled by means of the simplified 1-D code. Thus, in this study, the combined effects of climate variation and morphological constrains during the 20th and 21st centuries were simulated in the Middle and Lower Parana. Future hydrology was computed by applying four climate scenarios spanning the period 1991–2098, that were provided from different combinations of Global and Regional Climate models (Saurral et al., 2013). A significant increase of effective discharge and flow-discharge variability was highlighted passing from the 20th century time-series to forecasts, which slightly increase the rate of change of river bed levels. However, the river bed profile appeared pretty stable, confirming that the present river-alluvial slopes will remain fixed constrains to channel divagation.

2 Case studies

2.1 The Zambezi River

The Zambezi River (Fig. 1) is the fourth-longest river in Africa, with a basin of $1.39 \times 10^6 \text{ km}^2$. This river, with a total length of about 2500 km, has its source in Zambia and flows through Angola, along the borders of Namibia, Botswana, Zambia and Zimbabwe, to Mozambique. The Zambezi system can be divided up into three reaches, each differing in geological template, biodiversity and landscape characteristics: the

mented for long-term analyses that on average fulfil the applied simplifications. In fact, modelled river features are averaged over a relative long period τ (i.e. time window), which was fixed to one year for both performed studies on the basis of resulting Froude numbers as described in Fasolato et al. (2011).

The sediment transport formula, Eq. (1), applied in the model, is derived from the Engelund-Hansen formula for computing the bed- plus suspended-load (i.e. total-load) as described in Ronco et al. (2009) and Nones (2013). In Eq. (1) the rate of suspended sediment transport at yearly scale, $G_s(\tau)$, depends on energy slope (corresponding to water and bed slopes under the LUF hypothesis), $J(\tau)$, active width, $B(\tau)$, sediment mean diameter, $d(\tau)$, and effective discharge, $Q_{\text{eff}}(\tau)$, at each morphological box (around 50–80 km for both studies).

$$G_s(\tau) = \alpha' \cdot \frac{Q_{\text{eff}}(\tau)^m \cdot J(\tau)^n}{B(\tau)^p \cdot d(\tau)^q} \quad (1)$$

The active cross-section is defined as the river channel width that conveys the annual sediment transport, except for wash-load (Ronco et al., 2009). The effective discharge defines the flow that cumulates most of channel sediments (Biedenharn et al., 1999), i.e., following the Schaffernak approach, the maximum value of the product of interval frequencies f_r with solid discharges G_s occurring in the interval as assessed for corresponding hydrological conditions. The coefficient α' and the exponent m were calibrated by assuming the long-term equilibrium between effective discharge and sediment transport rate, while other exponents used in Eq. (1) are functions of m . More details on these parameters can be found in Di Silvio (1983).

Initial river widths, $B(\tau = 0)$, were derived from satellite images, initial water slopes, $J(\tau = 0)$, from low-resolution topography (i.e. watershed cartography), while sediment distributions were available from some samples along the river. Such a basic database is usually available also in remote parts of the world, which noticeable extends the model applicability to large rivers with respect to more advanced 2-D codes.

**Low-resolution
modelling of river
morphology**M. Nones and
M. Guerrero

Title Page

Abstract

Introduction

Conclusions

References

Tables

Figures

◀

▶

◀

▶

Back

Close

Full Screen / Esc

Printer-friendly Version

Interactive Discussion



Low-resolution modelling of river morphology

M. Nones and
M. Guerrero

Title Page

Abstract

Introduction

Conclusions

References

Tables

Figures

◀

▶

◀

▶

Back

Close

Full Screen / Esc

Printer-friendly Version

Interactive Discussion



In order to describe the seasonal widening and narrowing of river sections, a basic calibration method was introduced, that combines satellite images with flow discharge records. The 1-D model was coupled to a simplified description of river cross-sections (Nones, 2013), which accounts for river width changing at a smaller time-scale (i.e. seasonal oscillation) with respect to the bed level evolution simulated. This synthetic cross-sections model computes the active river width as a function of flow discharge. Indeed, the statistical distribution of river width $B(d)$ was expressed by means of the statistical distribution of flowing discharges $Q(d)$, where d is the event frequency at the analysed section and during the calibration period (i.e. 2000–2010 for both applications). Thus, for discharges lower than the bankfull value (the minimal discharge flowing over alluvial plains) the at-a-site hydraulic geometry relationship was assumed (Eq. 2) for the synthetic description of active cross-sections (Singh, 2003):

$$B(d) = \alpha \cdot Q(d)^\beta \quad (2)$$

where α and β are the calibration parameters (see, as example, Leopold and Maddock, 1953; Yalin, 1992; Parker et al., 2007; Wilkerson and Parker, 2011). The river widths for the calibration period were obtained from Landsat-7-satellite images (USGS database). The corresponding discharges were derived from the available river stage records. Images corresponding to flood events were discarded; in those cases wetted areas were not providing evidence about the active channel geometry but the flooding (Fig. 3).

4 Results

4.1 Evolution of the Zambezi River during the 20th century

The LUFM model was applied to simulate the morphological behaviour of the Lower Zambezi starting from 1907, when first systematic measurements were recorded at the gauging station of Zumbo, Mozambique. These measurements were analysed to assess the effective discharge of Zambezi and its main tributaries, together with the

large rivers of the world. This evolution was evaluated on the basis of seven satellite images (from the USGS's database) spanning the period 1970–2013, which confirmed the general negative trend of the delta surface extension. Figure 4a shows the negative trend over the years with the exception of a recovery between 1991 and 2000. In total, erosions prevailed yielding a loss of the delta area of around 50 km² in the analysed period.

The simulated time series of sediment transport rate in the most downstream morphological box confirmed the observed erosional trend for the Zambezi's delta. In fact, this time series should reflect the historical sediment supply to the delta. The simulated rate of sediment transport appeared correlated to the observed variation of delta area (Fig. 4b), notwithstanding the satellite images used may be affected by occasional water levels and the shoreline morphology is also affected by the Indian Ocean dynamics.

4.2 Evolution of the Parana River during the 20th and the 21st centuries

In this case, outputs from four regional climate models (RCMs) were used to produce future hydrological scenarios at the La Plata Basin. These scenarios were boundary conditions of the performed modelling, covered much of the 21st century and were provided in the research project “A Europe-South America Network for Climate Change Assessment and Impact Studies in La Plata Basin” (CLARIS-LPB). In particular, the four RCMs are: PROMES (UCLM, Spain) covering the period 1991–2098, RCA (SMHI, Sweden) from 1981 to 2098, RegCM3 (USP, Brazil) having information in period 1981–2048 and LMDZ (IPSL, France) with information in period 1991–2048. In addition, the 20th century scenario was produced from climatology-hydrology records. The details about these datasets are reported in Saurral et al. (2013). Figure 5 shows a comparison among applied scenarios in terms of frequency distribution of monthly flow discharges at Corrientes, which is the upstream boundary of the River Parana reach simulated by means of the LUFM model. It is possible to observe a relatively large dispersion among the different RCMs and a general increase in the frequency of large discharges

Low-resolution modelling of river morphology

M. Nones and
M. Guerrero

Title Page

Abstract

Introduction

Conclusions

References

Tables

Figures



Back

Close

Full Screen / Esc

Printer-friendly Version

Interactive Discussion



for prediction with respect to past century, which is particularly evident for the RegCM3 scenario.

Literature data regarding the Parana River morphology at watershed scale mostly concern the transported sediment volume per year and corresponding most “effective discharge” in conveying this volume at some sections. Thus, the LUFM model results were used to assess sediment volumes per year and corresponding effective discharges for future and past scenarios. The average effective discharges for each decade of the 20th century from literature are compared to LUFM corresponding results in Fig. 6, showing a good correlation with maximum deviations in the order of some per cents, with few exceptions for largest discharges.

The sediment volume per year was divided into discharge classes of $2000 \text{ m}^3 \text{ s}^{-1}$ width and was compared among scenarios (Fig. 7). Whatever the analysed scenario, the average volume per year was almost the same (changing within the range of $20\text{--}30 \times 10^6 \text{ t yr}^{-1}$), but the distributions among classes were pretty different. The distribution for the 20th century did not present a very high maximum, and the maximum volume per year was detected in the interval of $13\,000\text{--}17\,000 \text{ m}^3 \text{ s}^{-1}$ (i.e. the average effective discharge for the 20th century), which roughly agrees with Amsler et al. (2005) investigation. In fact, using records from last century of water level and monthly flow discharges in Corrientes, Amsler et al. (2005) assessed the effective discharge to change within $15\,400\text{--}24\,500 \text{ m}^3 \text{ s}^{-1}$, among five periods with different length in time from 1904 to 1990, which yields the weighted average of $16\,800 \text{ m}^3 \text{ s}^{-1}$. When comparing this value to LUFM results, the model resolution must be considered. The interval of $13\,000\text{--}17\,000 \text{ m}^3 \text{ s}^{-1}$ was detected using discharge classes derived from the yearly time series simulated (one year is the LUFM’s evolution window), while Amsler et al. (2005) applied monthly records that present larger picks.

As far as concern the resulting morphology, the cross-sections width appeared with the largest sensitivity to flow regime at the Lower Parana, which exacerbated the deviation between various scenarios in terms of resulting bed profiles and average wetted area. The model gave almost fixed slope at the Lower and Middle Parana in the in-

Low-resolution modelling of river morphology

M. Nones and
M. Guerrero

Title Page

Abstract

Introduction

Conclusions

References

Tables

Figures

⏪

⏩

◀

▶

Back

Close

Full Screen / Esc

Printer-friendly Version

Interactive Discussion



Low-resolution modelling of river morphology

M. Nones and
M. Guerrero

Title Page

Abstract

Introduction

Conclusions

References

Tables

Figures

⏪

⏩

◀

▶

Back

Close

Full Screen / Esc

Printer-friendly Version

Interactive Discussion

terval of around $2\text{--}3\text{ cm km}^{-1}$ and $3\text{--}5\text{ cm km}^{-1}$, respectively, and mostly depending on the sub-reach location (morphological box), while the corresponding cross-sections change was also correlated to the variability of forcing time series (scenarios). The river width at the Lower and Middle Parana varied in the range of 1600–3300 m and 1200–2400 m, respectively.

The resulting bed levels in terms of cumulate variation (i.e. final depositions and erosions at each morphological box) were assessed for the 20th century and the two continuous time series available from future projections (PROMES and RCA scenarios). Although the noticeable increase in the forcing and effective discharges (Figs. 5 and 7, respectively) when passing from past to future scenarios, the bed level changes along the river maintained almost the same aggradation or degradation tendencies as for the 20th century, with maximal values of few tenths of centimetres in one century (Fig. 8). The bed level resulted pretty stable along the river and especially at the Lower Parana.

Some morphological data of the Parana River can be retrieved in literature. Amsler et al. (2005) and Castro et al. (2007) observed different response of the planimetric morphology at the Middle and Lower Parana, respectively, to the same climate variability. Reasons were pointed out in the alluvial plane morphology, which noticeable enlarges and decreases in slope in the Lower Parana. Although the observed braided and bifurcated morphologies at the Middle and Lower Parana, respectively, may be simulated with detailed 2-D models, the performed simulations corroborated the arguing that river slope and width are almost fixed constrains. The variability along the river's course of these constrains and the driving increase of the precipitations during the last part of the 20th century would have produced different channel divagations at the Middle and Lower Parana. In addition, it is worth noting that the performed 1-D simulations provided boundary conditions for more detailed 2-D modelling of a Lower Parana sub-reach (Guerrero et al., 2013b).

5 Discussion

The changes of effective discharge, sediment transport rate, river bed level, bed sediment sorting and cross-section width occurred during the 20th and the 21st centuries along the Zambezi and Parana rivers were analysed with the LUFM model. This 1-D code introduces some important simplifications in the mathematical description of the river hydraulics (among others, kinematic propagation of water flow and local uniform flow hypothesis) and in the schematization of the channel geometry (namely, cross-sections synthetic profile). These simplifications gave some opportunities with respect to more detailed modelling (e.g. 2-D codes). In fact, the LUFM simulated the long-term morphodynamic processes related to natural and anthropogenic pressures at non-detailed spatial and temporal scales by implementing a very basic database. This is particularly relevant in remotes part of the world, such as in the presented case studies.

The performed analyses confirmed that the LUFM model is able to simulate average variations at large temporal and spatial scales. In fact, the schematizations used for the two applications accomplished to reduce the computational effort and the topographic resolution usually required to implement standard 1-D models and even more for detailed 2-D modelling. Notwithstanding the lack of geometrical resolution, the LUFM model responses appeared pretty reliable and less sensitive to inaccuracies induced by model parameters calibration on the basis of detailed field data. Indeed, the estimation of induced biases is not trivial, especially for detailed modelling that includes a lot of processes parameterization and for long-term simulations that extrapolate to a timeline far from initial conditions. The operated synthetic description of transversal cross-sections, based on satellite images, presents some advantages with respect to occasional surveys. The LUFM model accounted for sediment transport variation due to the active channel modifications driven by hydrological changes at seasonal scale.

Therefore, the simplified model applied presents a potential to overcome the lack of detailed field data providing, at the same time, reliable results for a variety of en-

ESURFD

1, 407–435, 2013

Low-resolution modelling of river morphology

M. Nones and
M. Guerrero

Title Page

Abstract

Introduction

Conclusions

References

Tables

Figures

⏪

⏩

◀

▶

Back

Close

Full Screen / Esc

Printer-friendly Version

Interactive Discussion



vided river cross-sections shape and boundary conditions. The impacts of hydropower reservoirs on river morphology during the 20th century were simulated. Our results agree with the river bed aggradation and delta erosion observed during the last century.

In the second case study, in addition to basic data, climate-hydrology scenarios were used at model boundaries to study the impacts of climate variability over the Middle and Lower Parana. Our results corroborate the hypothesis that climate driver differently affected the channel divagation because of river bed slope and width decreasing and increasing, respectively, when passing from the Middle to Lower Parana.

Acknowledgements. This research has received funding from: (1) the European Community's Seventh Framework Programme (FP7/2007–2013) under Grant Agreement No. 212492 (CLARIS-LPB. A Europe-South America Network for Climate Change Assessment and Impact Studies in La Plata Basin); and (2) the CUIA IT-AR universities consortium under the project “Impatto dei cambiamenti ambientali sull’eco-idromorfodinamica fluviale”.

References

- Amsler, M. L. and Drago, E. C.: A review of the suspended sediment budget at the confluence of the Parana and Paraguay Rivers, *Hydrol. Process.*, 23, 3230–3235, 2009.
- Amsler, M. L., Ramonell, C. G., and Toniolo, H. A.: Morphologic changes in the Parana River channel (Argentina) in the light of the climate variability during the 20th century, *Geomorphology*, 70, 257–278, 2005.
- Attwell, R. I. G.: Some effects of Lake Kariba on the ecology of a floodplain of the mid-Zambezi valley of Rhodesia, *Biol. Conserv.*, 2, 189–196, 1970.
- Beilfuss, R. D. and Davies, B. R.: Prescribed flooding and wetlands rehabilitation in the Zambezi Delta, Mozambique, *An Int. Perspective on Wetland Rehabilitation*, 143–158, 1999.
- Beilfuss, R. D., Moore, D., Dutton, P., and Bento, C.: Patterns of vegetation change in the Zambezi Delta, Mozambique, Working paper #3 of the Program for the Sustainable Management of Cahora Bassa Dam and the Lower Zambezi Valley, International Crane Foundation, USA, 2001.

Low-resolution modelling of river morphology

M. Nones and
M. Guerrero

Title Page

Abstract

Introduction

Conclusions

References

Tables

Figures

⏪

⏩

◀

▶

Back

Close

Full Screen / Esc

Printer-friendly Version

Interactive Discussion



Low-resolution modelling of river morphology

M. Nones and
M. Guerrero

Title Page

Abstract

Introduction

Conclusions

References

Tables

Figures

◀

▶

◀

▶

Back

Close

Full Screen / Esc

Printer-friendly Version

Interactive Discussion

McCartney, M., Cai, X., and Smakhtin, V.: Evaluating the Flow Regulating Functions of Natural Ecosystems in the Zambezi River Basin, Research Report n. 148 of IWMI (International Water Management Institute), 2013.

Nones, M.: Riverine dynamics at watershed scale: hydro-morpho-biodynamics in rivers, Eds. LAP Lambert Academic Publishing, p. 140, ISBN-13 978-3659367854, 2013.

Parker, G. P., Wilcock, P. R., Paola, C., Dietrich, W. E., and Pitlick, J.: Physical basis for quasi-universal relations describing bankfull hydraulic geometry of single-thread gravel bed rivers, *J. Geophys. Res.*, 112, F04005, doi:10.1029/2006JF000549, 2007.

Reeve, W. H.: Progress and Geographical Significance of the Kariba Dam, *Geogr. J.*, 126, 140–146, 1960.

Ronco, P., Fasolato, G., and Di Silvio, G.: Modelling evolution of bottom profile and grain size distribution in unsurveyed rivers, *Int. J. Sediment Res.*, 24, 127–144, 2009.

Ronco, P., Fasolato, G., Nones, M., and Di Silvio, G.: Morphological effects of damming on lower Zambezi River, *Geomorphology*, 115, 43–55, 2010.

Saurral, R., Montroull, N., and Camilloni, I.: Development of statistically unbiased 21st century hydrology scenarios over La Plata Basin, *International Journal of River Basin Management*, in press, 2013.

Singh, V. P.: On the theories of hydraulic geometry, *Int. J. Sediment Res.*, 18, 196–218, 2003.

Suschka, J. and Napica, P.: Ten years after the conclusion of Cabora Bassa Dam, The impacts of large water projects on the environment, *Proceedings of an international symposium, UNEP/UNESCO, Paris, France, 1986.*

Tilmant, A., Kinzelbach, W., Juizo, D., Beevers, L., Senn, D., and Casarotto, C.: Economic valuation of benefits and costs associated with the coordinated development and management of the Zambezi river basin, *Water Policy*, 14, 490–508, 2012.

Timberlake, J.: Biodiversity of the Zambezi basin wetlands, review and preliminary assessment of available information, *Final Report IUCN, Harare, Zimbabwe, 1998.*

Walford, H. L., White, N. J., and Sydow, J. C.: Solid sediment load history of the Zambezi Delta, *Earth Planet. Sc. Lett.*, 238, 49–63, 2005.

Walling, D. E.: The sediment yields of African rivers. *Challenges in African Hydrology and Water Resources, Proceedings of the Harare Symposium, IAHS-AISH P.*, 144, 265–283, 1984.

Wilkerson, G. V. and Parker, G.: Physical Basis for Quasi-Universal Relations Describing Bankfull Hydraulic Geometry of Sand-Bed Rivers, *J. Hydraul. Eng.-ASCE*, 137, 739–753, 2011.

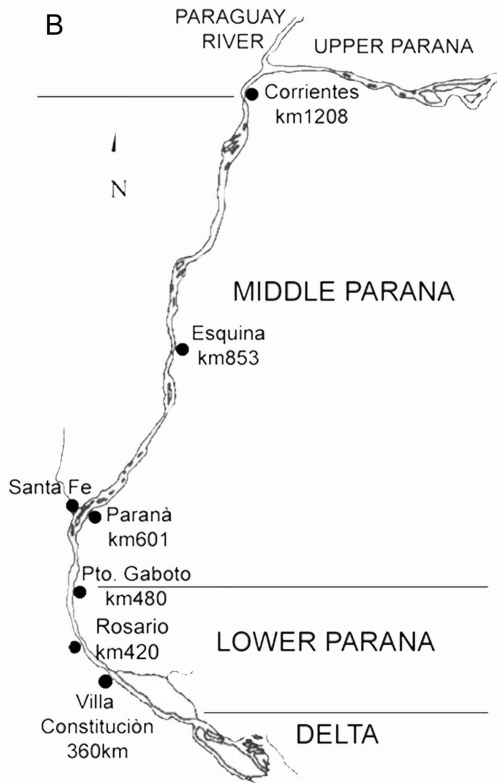


Fig. 2. (A) La Plata Basin. **(B)** The Middle and Lower Parana with the principal cities and corresponding kilometric labelling of the navigation way.

**Low-resolution
modelling of river
morphology**

M. Nones and
M. Guerrero

Title Page

Abstract

Introduction

Conclusions

References

Tables

Figures

⏪

⏩

◀

▶

Back

Close

Full Screen / Esc

Printer-friendly Version

Interactive Discussion



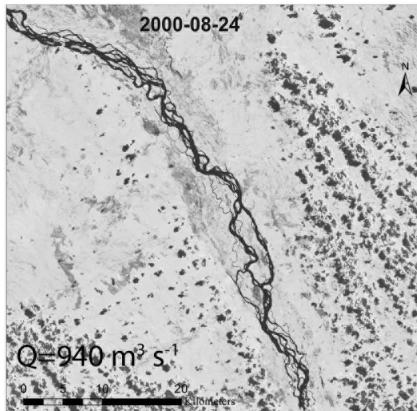
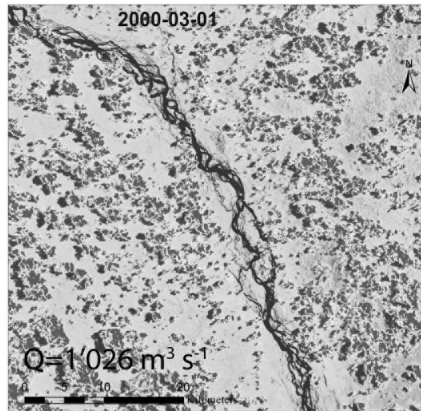
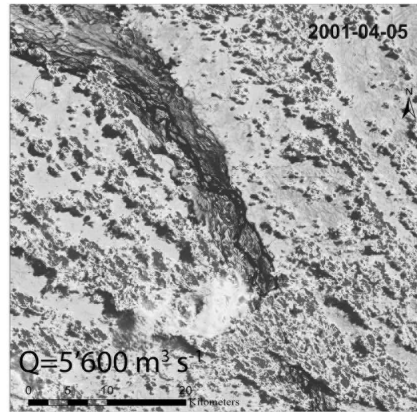
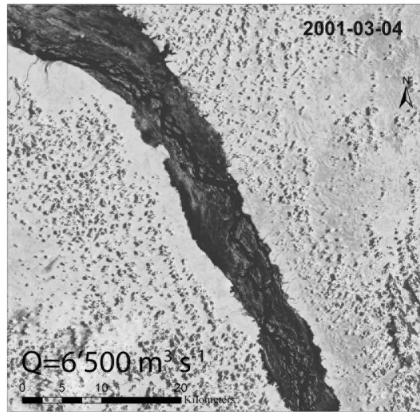


Fig. 3. Example of satellite images of the Lower Zambezi River upstream Caia (Mozambique): variation of the active river width related to the variation of the river discharge.

Low-resolution modelling of river morphology

M. Nones and
M. Guerrero

Title Page

Abstract

Introduction

Conclusions

References

Tables

Figures

◀

▶

◀

▶

Back

Close

Full Screen / Esc

Printer-friendly Version

Interactive Discussion

Low-resolution modelling of river morphology

M. Nones and
M. Guerrero

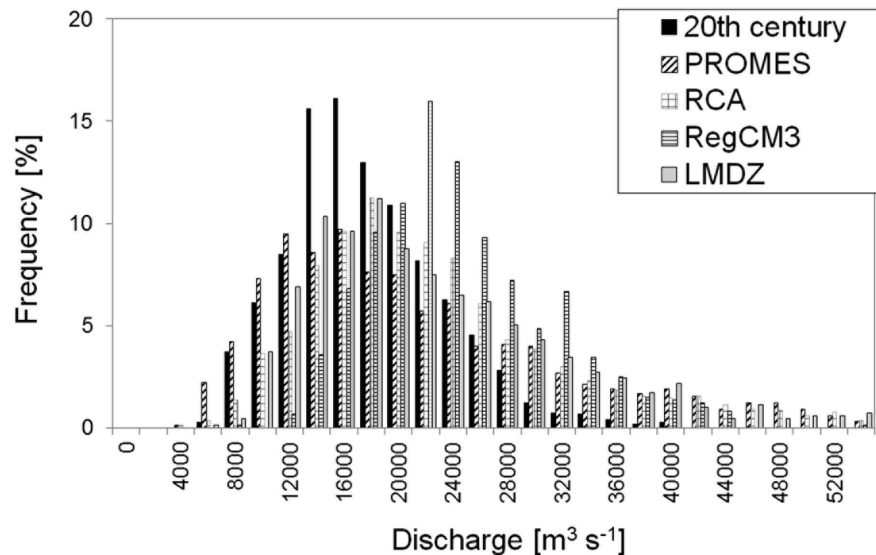


Fig. 5. Frequency distributions of monthly flow discharges of applied scenarios for LUFM modelling (20th century and future prediction from listed RCMs) at Corrientes.

[Title Page](#)
[Abstract](#)
[Introduction](#)
[Conclusions](#)
[References](#)
[Tables](#)
[Figures](#)
[⏪](#)
[⏩](#)
[◀](#)
[▶](#)
[Back](#)
[Close](#)
[Full Screen / Esc](#)
[Printer-friendly Version](#)
[Interactive Discussion](#)

Low-resolution modelling of river morphology

M. Nones and
M. Guerrero

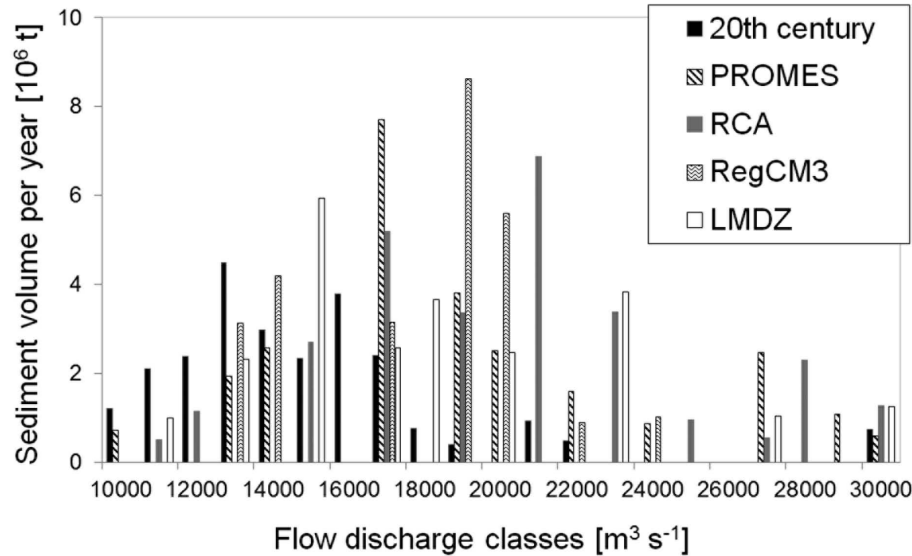


Fig. 7. Sediment volume per year from LUFM modelling over corresponding flow discharge classes at Corrientes, characterizing past and future scenarios.

Title Page

Abstract Introduction

Conclusions References

Tables Figures

⏪ ⏩

⏴ ⏵

Back Close

Full Screen / Esc

Printer-friendly Version

Interactive Discussion

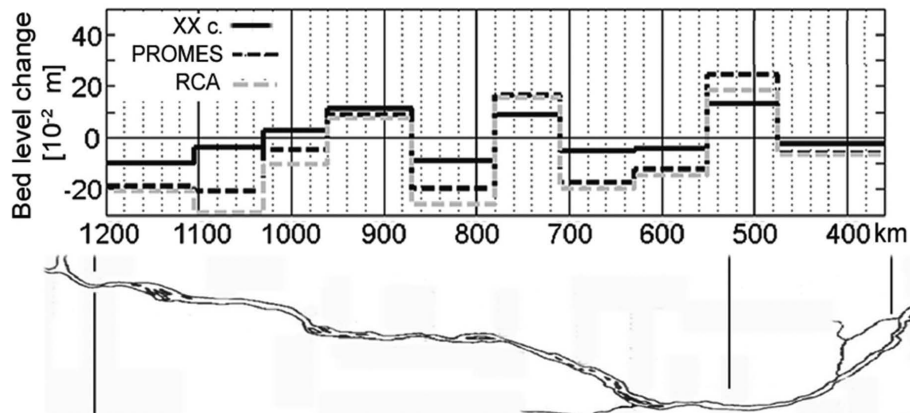
**Low-resolution
modelling of river
morphology**M. Nones and
M. Guerrero

Fig. 8. Simulated cumulative variation of the bed level for the continuous time series: past century and 21st century predictions (PROMES and RCA scenarios).

Title Page

Abstract

Introduction

Conclusions

References

Tables

Figures

◀

▶

◀

▶

Back

Close

Full Screen / Esc

Printer-friendly Version

Interactive Discussion