

**Seismic monitoring
of geomorphic
processes**

A. Burtin et al.

This discussion paper is/has been under review for the journal Earth Surface Dynamics (ESurFD).
Please refer to the corresponding final paper in ESurFD if available.

Seismic monitoring of geomorphic processes

A. Burtin¹, N. Hovius¹, and J. M. Turowski^{1,2}

¹GeoForschungsZentrum, Helmholtz Centre Potsdam, Potsdam, Germany

²Swiss Federal Research Institute WSL, Birmensdorf, Switzerland

Received: 19 November 2014 – Accepted: 22 November 2014

– Published: 15 December 2014

Correspondence to: A. Burtin (burtin@gfz-potsdam.de)

Published by Copernicus Publications on behalf of the European Geosciences Union.

Title Page

Abstract

Introduction

Conclusions

References

Tables

Figures



Back

Close

Full Screen / Esc

Printer-friendly Version

Interactive Discussion



Abstract

In seismology, the signal is usually analysed for earthquake data, but these represent less than 1 % of continuous recording. The remaining data are considered as seismic noise and were for a long time ignored. Over the past decades, the analysis of seismic noise has constantly increased in popularity, and this has led to develop new approaches and applications in geophysics. The study of continuous seismic records is now open to other disciplines, like geomorphology. The motion of mass at the Earth's surface generates seismic waves that are recorded by nearby seismometers and can be used to monitor its transfer through the landscape. Surface processes vary in nature, mechanism, magnitude and space and time, and this variability can be observed in the seismic signals. This contribution aims to give an overview of the development and current opportunities for the seismic monitoring of geomorphic processes. We first describe the common principles of seismic signal monitoring and introduce time-frequency analysis for the purpose of identification and differentiation of surface processes. Second, we present techniques to detect, locate and quantify geomorphic events. Third, we review the diverse layout of seismic arrays and highlight their advantages and limitations for specific processes, like slope or channel activity. Finally, we illustrate all these characteristics with the analysis of seismic data acquired in a small debris-flow catchment where geomorphic events show interactions and feedbacks. Further developments must aim to fully understand the richness of the continuous seismic signals, to better quantify the geomorphic activity and improve the performance of warning systems. Seismic monitoring may ultimately allow the continuous survey of erosion and transfer of sediments in the landscape on the scales of external forcing.

1 Introduction

A multitude of geomorphic processes act on the Earth's surface, driving the evolution of its landscapes. These processes include for example river sediment transport, river

ESURFD

2, 1217–1267, 2014

Seismic monitoring of geomorphic processes

A. Burtin et al.

Title Page

Abstract

Introduction

Conclusions

References

Tables

Figures



Back

Close

Full Screen / Esc

Printer-friendly Version

Interactive Discussion



bed erosion, debris flow, and hillslope activity such as rock fall and landsliding, all of which act at diverse spatio-temporal scales. Moreover, interactions and feedbacks may occur amongst these processes, within individual episodes of geomorphic activity or at longer time scales (Whipple, 2004). For example, a common concept is that hillslopes provide sediment to a river (Hovius et al., 2000), where it serves as tools for erosion of the channel (Sklar and Dietrich, 2001; Attal and Lavé, 2006; Turowski et al., 2007; Cook et al., 2013). Channel lowering or lateral undercutting of the banks can in turn drive further erosion of adjacent hillslopes (Densmore et al., 1997; Molnar et al., 2010; Burtin et al., 2014). Such links between separate process domains determine the dynamics of the Earth's surface, and need to be resolved to understand the landscape as a whole. It can be difficult to directly observe geomorphic processes and especially their links, and monitoring techniques often lack the temporal and spatial coverage and resolution to address the scale of interest. Thus, the development of observation approaches that offer continuous coverage of surface process activity at the landscape scale is a key challenge in geomorphology. Such approaches are not only essential to the advancement of understanding of individual processes and landscape dynamics, but they can also be used for natural hazard assessment, real-time event warning (e.g. Berti et al., 2000; Badoux et al., 2009), and monitoring in civil engineering applications. Seismic monitoring techniques are promising in this respect, as the only currently available method to monitor an integral landscape at high temporal resolution, without the need to focus on a specific process or site (Burtin et al., 2013). In the past decades, the potential of using acoustic and seismic signals for geomorphological gain was explored in several studies (e.g., Bänzinger and Burch, 1990; Taniguchi et al., 1992; Govi et al., 1993; Rickenmann and McArdell, 2007; Burtin et al., 2008, 2011; Gray et al., 2010; Schmandt et al., 2013). The approach makes use of the fact that the fast displacement of mass at the Earth's surface generates elastic seismic waves that propagate through the subsurface and can be recorded by acoustic or seismic sensors.

A simple particle drop experiment made on a dry gravel-bed channel can be used to illustrate the potential of monitoring geomorphic mass movements with seismic sen-

Seismic monitoring of geomorphic processes

A. Burtin et al.

Title Page

Abstract

Introduction

Conclusions

References

Tables

Figures



Back

Close

Full Screen / Esc

Printer-friendly Version

Interactive Discussion



Seismic monitoring of geomorphic processes

A. Burtin et al.

Title Page

Abstract

Introduction

Conclusions

References

Tables

Figures



Back

Close

Full Screen / Esc

Printer-friendly Version

Interactive Discussion



sors, and to a certain extent, the characterization of geomorphic processes (Burtin et al., 2011). Two different rocks with masses of 45 kg and 0.07 kg weight were dropped from 1 m height, and the induced elastic waves were recorded by a seismometer located at 7 m from the impact. Two immediate observations can be made from the recorded signal (Fig. 1): the heavier rock generates a seismic signal with an amplitude that is 30 times larger than the lighter rock, and its frequency response has a longer period wave.

Based on this simple experiment, one can expect that any process in which solid matter moves over the surface of the Earth generates seismic waves that carry information about the location, timing and magnitude of that process in their time series and frequency content. Indeed, seismic and acoustic methods are used routinely to monitor geomorphic processes such as snow avalanches (e.g., Surinach et al., 2005; Bessasson et al., 2007) and bedload transport (e.g., Gray et al., 2010; Rickenmann et al., 2012), and are employed on an operational basis in natural hazard warning systems (e.g., Badoux et al., 2009). Established applications have mainly targeted a specific process at a specific site. Stream-side or landscape-wide monitoring concepts are not yet established as a standard tool in geomorphology, but proof-of-concept studies have been described for several processes such as debris flows (Burtin et al., 2009, 2014), bedload transport (Govi et al., 1993; Burtin et al., 2008, 2011; Hsu et al., 2011; Schmandt et al., 2013) and rock slides (Helmstetter and Garambois, 2010; Deparis et al., 2010; Dammeier et al., 2011), and path-finding scientific applications have been published (Ekström and Stark, 2013; Burtin et al., 2014).

Here, we review the principles, advantages and current limitations of the seismic monitoring of geomorphic processes. First, we introduce some basic concepts of seismology and survey the different instrumentations for recording seismic waves generated by geomorphic sources. Then, we highlight the advantages and drawbacks of a seismic remote sensing approach, explore the use of seismic instrument arrays to detect, locate and characterize geomorphic activity and discuss the adaptation of the network geometry to the geomorphic process or process system of interest, illustrat-

ing each point with practical examples. Finally, we preview the development of seismic tools for the real-time high-resolution monitoring of Earth surface processes.

2 Seismic signals and their monitoring

2.1 Signal generation, propagation and recording

5 When a rock particle hits the ground, the kinetic and potential energy of the impact is partially transferred to the medium as seismic energy and carried by seismic waves that propagate and dissipate from the source point. Seismic waves are classified as body-waves that travel through the medium as compressional waves or P waves (also primary waves), involving volumetric disturbances, and shear waves or S waves (also secondary waves), with only shearing deformation, precluding their propagation in fluids. Seismic waves can also travel along the Earth's surface as surface waves. These are further subdivided into Rayleigh and Love waves. Rayleigh waves arise from an interaction between P and S waves at the free surface and are radially polarized with a retrograde ellipsoidal particle motion similar to the orbital motion of water under surface waves. Love waves consist of S waves polarized in the horizontal plane that are trapped in a wave guide near the surface. Therefore, they are only observed on the transverse component of seismometers.

The seismic energy that radiates from a source is directly linked to the magnitude of the force involved. In addition, the forces acting at the source determine the frequency content of the emanating waves, with the largest seismic sources exciting the lowest frequencies. The largest earthquakes cause waves with frequencies of $\sim 3 \times 10^{-4}$ Hz (e.g., Lay and Wallace, 1995), and very large landslides can generate waves with frequencies of $\sim 6 \times 10^{-3}$ Hz (Ekström and Stark, 2013). The forces involved in most geomorphic process events are small by comparison, exciting waves with dominant frequencies above 1 Hz. Seismic energy is dissipated while the wave is travelling, and this dissipation is also dependent on the frequency content of the wave. Very large mass

Seismic monitoring of geomorphic processes

A. Burtin et al.

Title Page

Abstract

Introduction

Conclusions

References

Tables

Figures



Back

Close

Full Screen / Esc

Printer-friendly Version

Interactive Discussion



Seismic monitoring of geomorphic processes

A. Burtin et al.

Title Page

Abstract

Introduction

Conclusions

References

Tables

Figures

◀

▶

◀

▶

Back

Close

Full Screen / Esc

Printer-friendly Version

Interactive Discussion



movements produce low frequency signals that can be recorded at great distances, like earthquakes, but more common geomorphic signals dissipate over distances of less than 100 km (e.g., Deparis et al., 2008; Burtin et al., 2009). Seismic attenuation can occur due to several types of dissipation. First, the seismic waves from a point source spread in all directions, and their energy is distributed over an ever-increasing area, which is to a first order spherical for body-waves and cylindrical for surface waves. Thus, the energy per unit area decreases with the square of the distance to the source for body-waves and linearly for surface waves. This type of dissipation is referred to as geometrical spreading, and it explains why surface waves have generally the largest amplitude on a seismogram. Second, seismic energy is also lost by shear heating at grain boundaries or rock mass discontinuities, referred to as anelastic attenuation. The effect is frequency-dependent; high frequencies are more sensitive to heterogeneities in the medium, meaning that they are more attenuated than low frequencies. Low-frequency seismic waves, with long wavelengths, are not affected by medium heterogeneities with a shorter characteristic length scales. Therefore, the medium is seen as a homogeneous body by such waves. Anelastic attenuation is described by a quality factor Q , which is wave-dependent (P or S waves) and inversely proportional to the energy loss. Thus, low Q values denote a strongly attenuating medium.

Seismic waves can be recorded by velocimeters, seismometers or geophones, all of which register local ground motions. Accelerometers or strong motion sensors can also be used as seismic instruments. Their use in geomorphic studies is limited since they are less sensitive to small motions than seismometers and we do not consider them further. Modern seismic instrumentation offers a wide range of sensors with different characteristics that make them suitable for specific applications, like seismic imaging, earthquake monitoring or civil engineering. A key characteristic concerns the frequency response of the instrument or its sensitivity to a given frequency band. Two main instrument categories exist. Short-period sensors, like geophones are sensitive to a high frequency band from around one Hz up to several hundreds of Hz. This high frequency band is well suited for most geomorphic sources and short-period sensors are es-

**Seismic monitoring
of geomorphic
processes**

A. Burtin et al.

Title Page

Abstract

Introduction

Conclusions

References

Tables

Figures



Back

Close

Full Screen / Esc

Printer-friendly Version

Interactive Discussion



pecially used for monitoring of channel processes. The principal difference between a geophone and a seismometer is that the latter is more sensitive to small ground motions, especially at frequencies below 1 Hz. Surface processes also generate low frequency seismic waves, which require broadband seismometers that commonly have a natural frequency of 8.3×10^{-3} Hz (120 s period wave). This allows the recording of low frequency seismic energy induced by large landslides and other mass movements (e.g., Ekström and Stark, 2013). Broadband seismometers are also sensitive to higher frequencies (~ 100 Hz). They are typically more expensive than short-period sensors.

Broadband seismometers and most short-period instruments record seismic signals in three dimensions, on orthogonal axes which are commonly aligned vertical, north and east so that directional information from multiple stations can be compared. The study of horizontal signal components has several interests. First, the seismic energy is larger on horizontal components since they are affected by both types of surface waves (Rayleigh and Love waves). This contrasts with the vertical direction which records Rayleigh waves only, and body waves whose amplitude is much lower than that of surface waves. Second, the use of three-component instruments allows a larger diversity of data processing than a single-component instrument. For example, the polarity of seismic waves can be used to determine the source type, and it can also give some information about the incoming direction of a wave front in a location problem. Moreover, the analysis of three-component seismic data allows the estimation of possible site effects, like seismic amplification.

Seismometers and geophones are sensitive to small ground motions, corresponding to velocities larger than $1 \mu\text{m s}^{-1}$ at a quiet site. They can but do not have to be deployed in the immediate vicinity of the studied processes. Crucially, they can also be located at safe sites, removed from geomorphic process activity, where their functioning is not compromised. Their location can be tailored to the monitoring objective, which typically falls into one of two categories. Either monitoring is targeted at a specific process and site, or it is aimed at the use of the ambient seismic noise to study multiple processes interacting over a distributed area. We will discuss these two general classes in the

following sections, using the monitoring of bedload transport as an example, as both local and ambient approaches have been used to study this process.

2.2 Local monitoring

5 Geophones are used in several indirect methodologies to survey channelized geomorphic processes such as bedload transport (e.g. Gray et al., 2010) and debris flows (e.g., Comiti et al., 2014). The term indirect indicates that the seismic signal gives direct information only on relative rates, and has to be calibrated to obtain absolute rates (e.g., Mizuyama et al., 2010a). For in-stream monitoring, geophones are often coupled to steel plates or pipes (e.g., Rickenmann and Fritschi, 2010; Mizuyama et al., 2010b).
10 In this set up, the sensor records the signal of the impact of sediment particles on the steel casing whilst being protected from the sediment-laden flow. As an additional benefit, it is to some extent possible to isolate the sensor system from noise sources originating outside the channel, and thereby from processes that are “not of interest”.

15 Currently, the most advanced in-stream indirect monitoring method for bedload transport is the Swiss plate-type geophone system (Rickenmann et al., 2014; Turowski et al., 2009, 2013) that will be used as an example here. Versions of this sensor system have been employed for more than 25 years in the Erlenbach, a small headwater catchment (0.7 km²) in the Swiss pre-Alps (e.g., Rickenmann et al., 2012). The stream is instrumented with six geophone plates located in a cross-section just upstream of the retention basin. The sensors record the seismic signal of bedload impacting on the plates, and when the amplitude exceeds a pre-defined threshold, an impulse is counted. These impulse counts provide a memory-saving summary statistic that has been proven to be a robust predictor of transported particle mass both in laboratory experiments and in comparison to direct field measurements at the Erlenbach (Fig. 2) and at other sites
20 (Rickenmann and McArdell, 2007; Rickenmann et al., 2012, 2014). A similar technique
25 is used for the Japanese pipe hydrophone and yields comparable results (Mizuyama et al., 2010a, b).

Seismic monitoring of geomorphic processes

A. Burtin et al.

Title Page

Abstract

Introduction

Conclusions

References

Tables

Figures

⏪

⏩

◀

▶

Back

Close

Full Screen / Esc

Printer-friendly Version

Interactive Discussion



Seismic monitoring of geomorphic processes

A. Burtin et al.

Title Page

Abstract

Introduction

Conclusions

References

Tables

Figures



Back

Close

Full Screen / Esc

Printer-friendly Version

Interactive Discussion



Local monitoring has distinct advantages and disadvantages over ambient monitoring approaches. Although the initial installation of instrumentation such as the Swiss plate-type geophone system is costly and relies on the existence of a fixed channel cross section such as a check dam, afterwards the sensors are largely maintenance-free and can record at a high temporal resolution for decades. Moreover, the sensor housing is acoustically isolated and only relevant in-stream signals are recorded. Many other types of sensors exist (see Gray et al., 2010), some less sophisticated than the Swiss plate-type geophone system and therefore quicker to deploy, but less stable and more sensitive to noise. Local monitoring solutions provide observations and quantifications of a process at a point. For them to be meaningful, process manifestations must be focused in the location of observation. This is the case for channel processes such as bedload transport and debris flow, but not for other surface processes. If broader spatial coverage is desired, then ambient monitoring is the approach of choice.

2.3 Ambient monitoring

Ambient monitoring has two principle advantages. First, the instruments are installed outside of geomorphically active areas such as channel beds, and are thus easily accessible for maintenance and data collection, and protected from the destructive forces acting during geomorphic events. Second, the instruments are likely to record signals from a variety of processes and distributed sources.

Govi et al. (1993) were the first to explore a stream-side approach for the monitoring of in-channel processes, using six short-period seismometers deployed along a 150 m long coarse-grained alluvial channel in the Italian Alps. These authors analysed the average seismic amplitude from several flood events and highlighted the potential for bedload monitoring. Time-frequency analysis of continuous seismic signals from a temporary seismological experiment deployed across the Himalayas (Hi-CLIMB experiment, Nábělek et al., 2009) showed the importance of the nearby trans-Himalayan Trisuli River in generating the recorded seismic energy (Burtin et al., 2008). The stations along and within two kilometres from the Trisuli River displayed an increase of seismic

Seismic monitoring of geomorphic processes

A. Burtin et al.

Title Page

Abstract

Introduction

Conclusions

References

Tables

Figures



Back

Close

Full Screen / Esc

Printer-friendly Version

Interactive Discussion



energy between 1 and 20 Hz during the summer monsoon season (Fig. 3). Along the Himalayan Arc, this period shows a drastic increase of water discharge and sediment transport, due to rainfall and melting of Himalayan snow and glaciers (e.g., Barros and Lang, 2003). The relation between high frequency seismic energy and hydrological parameters traces a hysteresis loop (Fig. 3b) with a larger seismic energy during the onset of the monsoon than at the end of the summer at a given water level (Burtin et al., 2008). This indicates that the flowing water is not the only source of river seismic signals and that secondary signals are produced by sources in the river, probably moving bedload particles. No bedload data are available for Himalayan rivers at the time of writing, but a similar hysteresis loop between suspended sediment load and water discharge is known from other trans-Himalayan rivers (Gabet et al., 2008; Andermann et al., 2012; M. Struck, personal communication, 2014), lending some weight to this interpretation. Hsu et al. (2011) also found a hysteresis loop between discharge and seismic noise at the shorter time scale of a typhoon-induced flood along the Cho-Shui River, Taiwan.

For reduced hydrodynamics and grain sizes several orders of magnitude smaller than those mobile in Nepal or Taiwan, the potential of seismic monitoring was explored in a small braided river plain in the French Alps (Burtin et al., 2011). A frequency band of [2–5] Hz was found to best explain the fluctuation of water discharge (Fig. 4). Similarly, Schmandt et al. (2013) attributed the frequency band of [0.5–2] Hz to near-bed turbulence, the band of [2–15] Hz to the interaction between surface waves and air, and the band of [15–45] Hz to bedload transport. These observations indicate that in the river seismic signal the flowing water component can be spectrally isolated from the sediment component.

It has been suggested that larger bedload particles excite lower seismic frequencies (Burtin et al., 2011). This has also been inferred from laboratory and natural experiments (Huang et al., 2004, 2007), and a dependence of the signal on particle size has been reported from in-stream monitoring (Etter, 1996; Rickenmann et al., 2014). This

frequency-grain size dependence opens possibilities for indirect monitoring of bedload calibre and grain size distributions for example during floods.

Although channel processes were first investigated using ambient monitoring approaches, they are not the only geomorphic activity that is recorded by seismic networks. Importantly, the sensitivity of seismometers to weak ground motion also allows surveying of slope processes (Deparis et al., 2008; Dammeier et al., 2011), and a wide range of other seismic sources, from anthropogenic activity (McNamara and Buland, 2004) to meteorological and environmental sources like rain and wind or agitated vegetation. Thus, seismometer networks can be used to study both hillslope and channel processes, their interaction, and the attendant environmental conditions (Burtin et al., 2013, 2014). To understand what is recorded and to avoid misinterpretations, a source characterisation needs to be performed. This is generally done with time-frequency analysis, which allows the discrimination of seismic sources, and is the topic of the next section.

3 Characterisation of seismic signals

3.1 Methods

A common tool to characterize the seismic signal is time-frequency analysis. Although seismic amplitude can give relevant information, the important temporal features of a signal can be masked by input that is not related to the event of interest. Filter processing, targeting specific frequencies, can help to isolate relevant parts of the signal. Time-frequency analysis is a combination of both these aspects since the seismic amplitude or energy is quantified in both time and frequency domains.

A classic method in time-frequency analysis is the Fourier Transform. The continuous seismic signal can be divided into short segments, on which a taper is applied and a Fast Fourier Transform (FFT) is performed on each individual segment to obtain a series of spectra. These are compiled in time to give the equivalent of a spectrogram,

Seismic monitoring of geomorphic processes

A. Burtin et al.

Title Page

Abstract

Introduction

Conclusions

References

Tables

Figures



Back

Close

Full Screen / Esc

Printer-friendly Version

Interactive Discussion



showing the distribution of seismic energy in time and frequency. With a taper it is possible to decrease the effect of spectral leakage due to limited window size. It avoids an artificial increase of power at neighbouring frequencies and allows for enhanced identification of the frequencies that characterize a signal.

To reduce the variance of the spectrum that generally arises from the simple use of a FFT and enhance the interpretation of a time-frequency analysis, several other Power Spectral Density (PSD) estimators exist. One PSD estimator relies on Welch's overlapping method (Welch, 1967), in which a time series is split into several overlapping segments and a PSD computed on each individual segment. Then, an average PSD over all the segments is determined, which corresponds to the PSD of the original time series. This averaging step serves to reduce the variance of the final spectrum. However, with short time series for which few data points are processed, the splitting is a limitation since it affects the resolution of the discrete spectrum, where a limited number of frequencies are estimated. This method especially reduces the spectrum resolution at low frequencies. Thus, in a time-frequency analysis with a temporal resolution of a few seconds Welch's approach can be problematic for frequencies around 1 Hz. To avoid this limitation, PSDs can be computed with a multi-taper approach (Thomson, 1982; Percival and Walden, 1993). In this case, the time series is windowed with a discrete, prolate spheroidal sequence of tapers, where the taper of a given order corrects the effect of the previous order. Then, all the calculated PSDs are averaged to obtain a spectrum with a reduced variance. The advantage of a multi-taper method is that the signal is not divided, as the window size is constant, which avoids a decrease of the frequency resolution.

Time-frequency analysis is not the only approach to characterize the energy of time series. Many other methods exist for signal processing, like wavelet analysis to remove noise from the seismic records and isolate the signal of a specific process. We refer the reader to relevant review papers for details (e.g., Gröchenig, 2001).

ESURFD

2, 1217–1267, 2014

Seismic monitoring of geomorphic processes

A. Burtin et al.

Title Page

Abstract

Introduction

Conclusions

References

Tables

Figures

⏪

⏩

◀

▶

Back

Close

Full Screen / Esc

Printer-friendly Version

Interactive Discussion



3.2 Seismic characteristics of geomorphic sources

Time-frequency analysis of seismic signals allows the identification of seismic sources with distinct spectral signatures. We can distinguish for example earthquakes, rockslides, debris-flows, bedload transport and anthropogenic activity (Fig. 5), based on differences between these sources in terms of the duration of a process event, the characteristic frequency range at which seismic energy is conveyed and the evolution of that frequency range over the duration of an event. Below, we review the seismic characteristics of several major geomorphic processes and other sources.

3.2.1 Rockfalls, landslides and river channel processes

As dry, gravity-driven erosion processes in steep rock walls, rockfalls, rockslides and rock avalanches tend to have a limited duration, similar to earthquakes, from several tens of seconds to a few minutes (e.g., Deparis et al., 2008). With a frequency content usually below 40 Hz, these events tend to have complex amplitude histories, due to independent motion of many substantial rock particles. The example spectrogram (Fig. 5) of a rockslide recorded in the Illgraben catchment in the Swiss Alps shows the emergence of seismic energy at high frequencies, and highlights activity of two different sources. The first is likely related to the slope failure and lasts about 10 s, and the second is interpreted to represent the rolling and tumbling of rock debris down the slope over a period of about a minute. Such characteristics are common to rockfall and rockslide activity (Deparis et al., 2008). A long rising time of seismic energy in many rockfalls contrasts with the sudden increase of energy in earthquakes. Thus, the rising time can be used to discriminate between this class of geomorphic events and earthquakes.

Landslides are an effective source of seismic signals and the largest mass movements are recorded at several thousands of kilometres distance (Kanamori and Given, 1982). This characteristic is explained by the low frequency (< 0.1 Hz) of the seismic waves that are generated by such landslides. The generation of low- to very low-

ESURFD

2, 1217–1267, 2014

Seismic monitoring of geomorphic processes

A. Burtin et al.

Title Page

Abstract

Introduction

Conclusions

References

Tables

Figures

⏪

⏩

◀

▶

Back

Close

Full Screen / Esc

Printer-friendly Version

Interactive Discussion



frequency content is a major difference to other slope events, like rockfalls and rock avalanches, which mostly produce high-frequency signals (> 1 Hz). However, seismic stations close to a landslide event also record high-frequency signals with durations of the order of minutes (e.g., Favreau et al., 2010). Low-frequency seismic waves are useful to model of the seismic signal because a simple earth model is enough for the medium assumption and high-frequency heterogeneities are neglected. This allows the inversion of the force mechanism of the event, generally a single force, and estimation of landslide parameters such as volumes or slide velocity (Favreau et al., 2010; Allstadt, 2013; Ekström and Stark, 2013). The study of such non-conventional seismic sources has been shown to be especially useful for the survey of submarine mass movements and landslides in remote (glaciated) settings (Lin et al., 2010; Ekström et al., 2003).

Turning to channel processes, debris flows produce an intense seismic activity that can be recorded by stream-side stations (Burtin et al., 2014). On a spectrogram, a debris-flow reveals a progressive to rapid increase of seismic energy in a wide high frequency band [1–60 Hz] (Fig. 5). This increase of seismic energy corresponds to the approach and arrival of the flow front close to the recording station. The total duration of a debris-flow seismic signal is a function of the flow activity and can last several to many minutes. In an example from the Illgraben catchment (Fig. 5), the first part of the signal has the highest seismic energy and corresponds to the head of flow, which has the greatest mass and density and the highest concentration of very large particles (Burtin et al., 2014). The tail of the signal is characterized by a gradual decay of energy due to decreasing flow level and sediment concentration.

Seismic signals of bedload transport have characteristics comparable to those of a debris-flow. Bedload motion activates the entire high-frequency band, but the lowest frequencies (< 5 Hz) are only active when coarse bedload is moving (Huang et al., 2007; Burtin et al., 2011). The increase of seismic energy, as well as the duration of recorded activity, depends largely on the meteorological and hydrological conditions during the flood event (rainfall, runoff etc.). As bedload transport generates a continuous ambient seismic activity due to simultaneous motion of many sediment particles,

Seismic monitoring of geomorphic processes

A. Burtin et al.

Title Page

Abstract

Introduction

Conclusions

References

Tables

Figures



Back

Close

Full Screen / Esc

Printer-friendly Version

Interactive Discussion



Seismic monitoring of geomorphic processes

A. Burtin et al.

Title Page

Abstract

Introduction

Conclusions

References

Tables

Figures



Back

Close

Full Screen / Esc

Printer-friendly Version

Interactive Discussion



identification of single impacts at multiple stations is generally impossible (Burtin et al., 2010). However, under specific hydro-sedimentary conditions with low bedload transport rates, individual impacts can be isolated. It is important to note that the river seismic signal is also affected by the flow of water (e.g., Schmandt et al., 2013). As an example, a bedload transport episode recorded along the “Torrent de St Pierre” in the French Alps (Meunier et al., 2011) was accompanied by a persistent [2–5] Hz seismic signal due to flowing water (Figs. 4a and 5).

Information from spectrograms helps to determine the main characteristics of a geomorphic event. These time-frequency features can be used a priori in an automated process for the identification of geomorphic sources and to limit the occurrence of false alarms, crucial in the development of warning systems. This discrimination can also be performed a posteriori to evaluate the relevance of the seismic monitoring of geomorphic processes. It requires reliable distinction between geomorphic sources and other sources that intrude in the frequency range of geomorphic signals. These are mainly of tectonic, meteorological or anthropogenic nature.

3.2.2 Tectonic and meteorological events and anthropogenic activity

Tectonic events are recorded by seismometers all around the world. The spectrogram of a local earthquake, an event located less than 100 km from the receiver, shows an instantaneous increase of seismic energy over a broad frequency range (Fig. 5), followed by a rapid energy decay that is stronger for higher frequencies. This frequency dependency illustrates the anelastic attenuation of seismic waves that propagate in a scattered medium (Toksöz and Johnston, 1981). The sudden energy increase corresponds to the impulsive arrival of a P wave. The event duration of up to tens of seconds is short but increases with the event magnitude. In the case of other tectonic events, like regional and more distant (teleseismic) earthquakes, the event duration is longer, and the signal has an important low frequency content (e.g., Burtin et al., 2013). Such events are recorded by regional and global seismic networks, and catalogues can be investigated to discard them from the continuous seismic signal (Burtin et al., 2013). It

is worth noting that occasionally large geomorphic events are also contained in such seismic catalogues.

Meteorological events can generate seismic signals at low and high frequencies. Wind can produce important seismic background noise at frequencies below 3.33×10^{-2} Hz, which correspond to wave periods exceeding 30 s, due to variations in the local atmospheric pressure field that produce an effective ground displacement and rotation (e.g., De Angelis and Bodin, 2012). Broadband seismometers are sensitive to such ground tilting motions, but short-period sensors cannot record the long-period waves generated by wind. In addition, wind can generate high-frequency seismic noise when it interacts with nearby obstacles such as vegetation or fences, which vibrate and thus induce a high-frequency disturbance. It is therefore important to deploy stations away from such sources of high-frequency signal. Rain drops can also lead to an increase seismic noise but this seems to be highly dependent of the local environment. During an experiment for which several seismometers were deployed in a river braidplain, Burtin et al. (2012) identified a rain signal at frequencies above 70 Hz that was present only at a station installed next to a large boulder. Stations deployed without immediate proximity of large rocks did not show this signal. It could be that rain drops falling on soft ground or soil are not effective sources of seismic noise, in contrast to drops hitting a rock surface, where there is a better coupling to propagate seismic waves. This interpretation has to be further investigated with dedicated experiments, but the observations seem to show that rain can affect very high frequencies under specific conditions. Further, lightning and thunder produce infrasound signals below 20 Hz (Scarpetta et al., 2005; Assink et al., 2008), which can be recorded by seismometers if the coupling between acoustic and seismic domains is effective (Walker et al., 2011). Nevertheless, to our knowledge, no study containing a systematic seismic survey of lightning and thunder sources has been published.

Finally, anthropogenic activity can also give rise to seismic perturbations. It can be as diverse as industrial activity, transport noise, or people passing close to a seismometer. Despite this large variability in their origin, a few time-frequency characteristics typical

ESURFD

2, 1217–1267, 2014

Seismic monitoring of geomorphic processes

A. Burtin et al.

Title Page

Abstract

Introduction

Conclusions

References

Tables

Figures



Back

Close

Full Screen / Esc

Printer-friendly Version

Interactive Discussion



for anthropogenic noise can be highlighted. The intensity of anthropogenic seismic disturbance generally follows the local work patterns, resulting in distinct daily cycles. Individual perturbations often have a short duration and affect the [1–20] Hz frequency band mainly (Fig. 5). The signal amplitude of such perturbations is mostly relatively low and recorded only at nearby stations. Therefore, anthropogenic signal is rarely coherent over an entire array and this criterion helps to separate human induced signals from geomorphic sources. Nevertheless, for geomorphological purposes it is best to avoid the deployment of instruments close to high traffic roads, industries or houses because these sources could mask geomorphic signals in the same frequency range.

4 Detection and location of geomorphic processes

4.1 Detection

Continuous seismic monitoring over longer time periods produces a large volume of data with a substantial number of events, making comprehensive manual detection and location expensive and prone to operator subjectivity. Automated event detection is a requirement especially for real-time monitoring. In seismology, the automated detection of earthquakes by permanent seismic arrays is a common task, which is performed in real-time, according to a widely applied procedure called short-term average/long-term average (STA/LTA) approach (e.g., Havskov and Alguacil, 2006). This approach is also relevant for geomorphological applications.

The principle of the STA/LTA approach is to continuously calculate the ratio R of the average of the absolute seismic amplitude or energy u of a short (STA) over long (LTA)

Seismic monitoring of geomorphic processes

A. Burtin et al.

Title Page

Abstract

Introduction

Conclusions

References

Tables

Figures



Back

Close

Full Screen / Esc

Printer-friendly Version

Interactive Discussion



time window. An algorithm makes the computation of running averages, where

$$STA_i = STA_{i-1} + \frac{|u_i| - STA_{i-1}}{N_{STA}}, \quad (1)$$

$$LTA_i = LTA_{i-1} + \frac{|u_i| - LTA_{i-1}}{N_{LTA}} \text{ and} \quad (2)$$

$$R_i = \frac{STA_i}{LTA_i}. \quad (3)$$

5 In these relations, i represents the sample or data point of the continuous signal and N_{STA} and N_{LTA} , the number of points taken to calculate the short and long term average, respectively. When R exceeds a pre-defined threshold, usually set from 3 to 6, a possible event is detected. If R remains above the trigger threshold during more than a given duration, the event is validated (Fig. 6). To ensure the efficiency of the STA/LTA

10 detection, it is important to define the key parameters according to the processes to be detected. This may require training with characteristic events to increase the relevance of the algorithm and avoid false alarms or undetected events.

The STA duration is typically taken in the range from 0.5 to 5 s. The shorter the duration, the more sensitive is the detection of impulsive events. For the study of geomorphic processes that have an emergent increase of seismic amplitude, the optimal STA can be quite long, which could preclude the detection of very short events. The LTA duration should be defined to capture the fluctuation of the background seismic noise. With a long LTA, R tends to decrease rapidly, resulting in an early end of the trigger (Fig. 6d and h). Moreover, when two separate events occur in a time period less

15 than the LTA duration, the second event may not be detected (Fig. 6h). To avoid these issues, the LTA can be frozen at the trigger value so that the ratio essentially reflects the fluctuation of STA, which is the smoothed event signal. The last parameter to define is the de-trigger threshold, which corresponds to the ratio value below which the detection of an event is terminated. The de-trigger can be equivalent to the trigger threshold

20 but could be set to a lower value to avoid a premature end of the event detection.

Seismic monitoring of geomorphic processes

A. Burtin et al.

Title Page

Abstract

Introduction

Conclusions

References

Tables

Figures



Back

Close

Full Screen / Esc

Printer-friendly Version

Interactive Discussion



**Seismic monitoring
of geomorphic
processes**

A. Burtin et al.

Title Page

Abstract

Introduction

Conclusions

References

Tables

Figures



Back

Close

Full Screen / Esc

Printer-friendly Version

Interactive Discussion



To illustrate the STA/LTA approach and the utility of a frozen LTA, we show the result for two seismic records, of a rockslide and a rockfall that occurred in the Illgraben catchment, Switzerland (Fig. 6). Prior to the detection, the signal from the vertical component was filtered in the frequency band assigned to the process of interest, [1–10] Hz in this case (Fig. 6a and e). Then, the absolute signal of the vertical component was computed, but we could also have averaged the absolute amplitude from all the available components to increase the signal to noise ratio. The STA and LTA durations were set to 5 and 90 s, respectively. The trigger threshold was defined at $R = 6$ and a lower value $R = 2$ was chosen for the de-trigger threshold. The rockfall case (Fig. 6a–d), illustrates the interest of a frozen LTA to correctly estimate the event duration: a continuously updated LTA quickly increases whereas the STA decreases, leading to a drop of the STA/LTA before the end of the event (Fig. 6d). This does not occur with a frozen LTA (Fig. 6c). In the second seismic recording (Fig. 6e–h), the rockslide duration is evidently well estimated with a frozen LTA, but the main benefit here is in the ability to detect a second event triggered 20 s later (Fig. 6g). This event is not detected with a continuously updated LTA because the STA has a level of amplitude equivalent to the tail of LTA from the first event (Fig. 6h).

Finally, for the automatic detection of long duration geomorphic processes, like a debris flow or a flood, the duration of the STA and the LTA have to be adapted. For this purpose, the STA should describe the duration of the seismic increase due to the flow arrival and could be set to 1–2 min. Further, the LTA should be scaled to the flow duration, from 30 to 90 min.

4.2 Location methods

The next step is to know where in the landscape an event occurs and how it evolves both in space and time. In this analysis, the key principle relies on the observation of a coherent seismic signal at multiple stations. Then, the time arrivals of the signal at the stations are used to determine the most likely location of the event, which is the origin point that best explains the observed arrival times. In this section, the location

of a geomorphic process is divided in two approaches, depending on the nature of the event, either a single or short duration event, like a rockfall, or a quasi-permanent seismic source, like bedload transport. In both cases, we need to determine an arrival time, but the procedure is different.

4.2.1 Discrete geomorphic events

Rockfalls, rockslides and other short duration hillslope processes can be considered as discrete or transient events with seismic signals of up to a few minutes. If the seismic amplitude is well above the ambient noise, such an event is easily detectable with a STA/LTA approach (Sect. 4.1). For location, several strategies are then available, depending on the noise level, the frequency content of signal and the seismic source type. These features affect the nature of the seismic waves that first arrive at a station. For instance, if the seismic noise level is high it may mask the first arrival, or, in case of a slope failure, an impulsive first arrival may be recorded. Therefore, the first arrival can be an emergent or impulsive increase of seismic amplitude, making estimation of the event time at a station more, or less difficult.

For emergent signals, the most commonly employed method, called beam-forming, relies on the cross-correlation of seismic records (e.g., Lacroix and Helmstetter, 2011). To determine the times of arrival T_i , the entire signal is cross-correlated, i.e., the envelope of the signal or a pre-selected time window in which a coherent wave-packet is observed at many stations. In this case, the arrival time T_i at a station i is defined by

$$T_i = t_0 + l_i/V, \quad (4)$$

with t_0 the origin time, l_i the distance from source to receiver and V the propagation velocity. In a medium with a homogenous V , l_i corresponds to the ballistic distance

$$l_i = \sqrt{(x_i - x_0)^2 + (y_i - y_0)^2 + (z_i - z_0)^2}, \quad (5)$$

where (x_i, y_i, z_i) and (x_0, y_0, z_0) are the coordinates of station i and the event, respectively. The correlation coefficient for the pair of stations (i, j) maximizes for the time

Seismic monitoring of geomorphic processes

A. Burtin et al.

Title Page

Abstract

Introduction

Conclusions

References

Tables

Figures



Back

Close

Full Screen / Esc

Printer-friendly Version

Interactive Discussion



delay dT_{i-j} that best sets in phase the two signals. The time delay dT_{i-j} between stations i and j is

$$dT_{i-j} = (t_0 + l_j/V) - (t_0 + l_i/V) = (l_j - l_i)/V. \quad (6)$$

Cross-correlation allows removal of the unknown parameter t_0 . Therefore, if V is unknown – which is common – then the location problem is solved by searching the location (x, y, z) and the propagation velocity V that best explains the dT_{i-j} observations.

With an array of N seismometers, a maximum of $N(N - 1)/2$ time delays can be obtained to locate the event. Then, the residuals between the observed and calculated dT are minimized. Alternatively, probability density functions can be used to map the time residuals in space (Burtin et al., 2009). Otherwise, the coherence of the cross-correlation functions can be directly mapped in the medium to retrieve the event origin (e.g., Lacroix and Helmsetter, 2011).

A separate approach relies on the polarization of the seismic waves to estimate the direction of the incoming waves in the horizontal plane (Jurkevics, 1988). With a back-projection of the arrival direction at two sites, an event can be located by triangulation, but more than two stations are required to estimate the relevance of the result. Polarization methods can only be applied if data from three-component sensors is available. However, this technique has limited potential for the study of hillslope processes because the polarization becomes highly variable for high frequency content and the necessary coherence between stations is often lost.

Finally, if the recorded event has an impulsive first arrival, like a slope failure or the impact of a freely falling object, it may be possible to identify a distinct first arrival. Then, the location procedure is, in essence, equivalent to the migration technique used in the study of earthquakes with the minimization of residuals between observed and calculated arrival times or time delays (Lee and Jahr, 1972).

Seismic monitoring of geomorphic processes

A. Burtin et al.

Title Page

Abstract

Introduction

Conclusions

References

Tables

Figures



Back

Close

Full Screen / Esc

Printer-friendly Version

Interactive Discussion



4.2.2 Continuous geomorphic events

In contrast to hillslope processes, channel processes generate ambient seismic noise that overwhelms discrete sources. This river noise is composed of sources induced both by the flowing water and the impacts of sediment particles. A single impact isolated from other sources is easily detectable, but the same impact among thousands of others along a river reach is impossible to observe coherently at several stations. The location of sediment transport from the coherent time arrivals of impacts is impossible, but another approach exists.

A location procedure for bedload transport was tested along the Trisuli River in Nepal with the dataset from the Hi-CLIMB experiment (Nábělek et al., 2009; Burtin et al., 2010). The method aims to cross-correlate the continuous river seismic signals between stations, and if two receivers show coherence in the seismic signals, it means that both are recording the same sources. Thus, by locating the coherence, we retrieve the origin of the sources, which is the bedload transport in the case of river seismic signal. This approach has been used earlier to locate sources of ambient seismic noise at lower frequencies (< 1 Hz), such as signals from ocean swell (Shapiro et al., 2006; Rhie and Romanowicz, 2006; Gu et al., 2007).

Although the approach is not complex to perform, it requires some pre-processing steps that are essential to properly interpret the river seismic recordings. The continuous seismic signal is composed of ambient seismic sources but foreign, transient events with a short duration and large amplitude, like earthquakes, landslides or human activity, can occur. When cross-correlating a 24 h long record, which includes an earthquake registered at several station, then the earthquake instead of the river noise will affect the cross-correlation and dominate the coherence. This effect can be avoided by applying a temporal and a frequency normalization of the raw signal. A detailed description of the necessary processing steps was given by Bensen et al. (2007), which is summarized here. The frequency normalization or spectral whitening consists of resetting the power of each frequency to an equal value, and the temporal normal-

ESURFD

2, 1217–1267, 2014

Seismic monitoring of geomorphic processes

A. Burtin et al.

Title Page

Abstract

Introduction

Conclusions

References

Tables

Figures



Back

Close

Full Screen / Esc

Printer-friendly Version

Interactive Discussion



ization reduces the effect of short impulsive signals. Temporal normalization can be strong using 1-bit processing, where only the sign of the time series is kept, but weaker procedures use a running mean or clip the seismic amplitude above a given threshold. These latter approaches require some parameterization to obtain the best window length for the average or the best threshold for the clipping.

Once the continuous data are normalized, the signals are cross-correlated. If the signals are coherent, then the coherence needs to be checked for its time stability to verify that it is not induced by a single source. Time stability analysis is also required to check if the coherence is properly associated with the processes of interest. Optimally, cross-correlation is performed at several frequencies related to sediment transport but also to other anthropogenic activity that may be continuous during the day. For the Hi-CLIMB experiment (Burtin et al., 2010), only the coherence observed during the monsoon season was kept, since this time period corresponds to the highest activity of the river, both for discharge and sediment transport. The operation was performed for each available station pair along the Trisuli River and for a wide range of frequencies.

Once the library of envelope of noise correlation functions is set, time delays are converted into distances in a migration step to locate the origin of the sources. A detailed description of the approach was given in Burtin et al. (2010). These authors found that the location of coherence along the Trisuli River was in agreement with calculated river incision rates. This correlation gives support for the strategy used to locate bed-load transport. In the described method, observations are made using a relative signal intensity since the normalization procedure resets the amplitude. Therefore, it is only possible to infer whether one river reach is transporting more sediment than another. However, calibration with independent measurements and the study of seismic amplitude with a noise correlation function may lead to the ability to obtain absolute transport rates.

To locate geomorphic activity, it is essential to use an array of seismometers. Arrays can have a wide range of network geometries that influence the resolution of the location and the area covered by the monitoring. Therefore, array geometry should be

ESURFD

2, 1217–1267, 2014

Seismic monitoring of geomorphic processes

A. Burtin et al.

Title Page

Abstract

Introduction

Conclusions

References

Tables

Figures



Back

Close

Full Screen / Esc

Printer-friendly Version

Interactive Discussion



adapted to the specific geomorphical needs. Different types of array geometries and their advantages and disadvantages are discussed in the next section.

5 Array geometry

5.1 Linear geometry

5 A seismic array with a linear geometry is suitable to study channel processes, like bed-load transport (Burtin et al., 2008, 2010) or the propagation of (debris) flows (Burtin et al., 2014). In the latter case, the flow velocity can be estimated from the analysis of seismic metrics. One approach consists of measuring the arrival time of the flow front at different stations, which corresponds to the time when the seismic energy exceeds
10 the background seismic activity prior to the flow arrival. Taking into account the distances along the channel and between stations, a front velocity of the debris-flow can be defined.

Other approaches can measure the velocity of the flow front. Since a seismometer is sensitive to sources that are triggered at large distances, the instrument can detect the arrival of a flow before it reaches the channel point nearest to it. Assuming that a constant seismic energy is delivered by the flow, the recorded energy should increase as
15 the flow moves closer to the station. Indeed, the attenuation of seismic energy decays with smaller source-receiver distances. Thus, it should be possible to retrieve the front velocity from the gradient of seismic energy arrival: the larger the rate of increase, the larger is the flow velocity. However, the anelastic attenuation of the medium and the wave content (body or surface wave) needs to be taken into account, and they are not
20 always known. Nevertheless, some measures can be taken to overcome this issue, like testing a wide range of realistic Q values with respect to the local lithology. An illustration of velocity estimation with this method is given in Sect. 6.2. Another complexity
25 arises from the fact that some processes, such as debris-flows, are spatially distributed seismic sources. A debris flow generates seismic noise over its entire length that can

Seismic monitoring of geomorphic processes

A. Burtin et al.

Title Page

Abstract

Introduction

Conclusions

References

Tables

Figures



Back

Close

Full Screen / Esc

Printer-friendly Version

Interactive Discussion



combine to modify the shape of the increase of seismic energy recorded at a station. However, large sediment particles usually concentrate in the snout of a debris-flow (Iverson, 1997), and they can be assumed to produce larger seismic sources than the tail end of the flow. Thus, the method of velocity estimation described above should at least give results that are correct to first order.

The flow velocity can also be inferred from the timing of the peak energy recorded at consecutive stations. This seismic metric may exhibit some discrepancies from one site to another and may not correspond to the real flow velocity. The channel morphology influences the dynamics of a flow, leading to erosion, transport or deposition of material, to pulsing transport, or to spatially variable flow velocities. As a consequence, a peak of seismic energy may be uncorrelated from one station to another. To better estimate velocity, the envelope of the seismic pulses can be cross-correlated to determine the most likely time delays for the passage of a flow event at several stations. In that case, the velocity is estimated by considering the entire flow signal. The study of seismic envelopes along the channel is also interesting for the continuous characterization of a flow event. For example, the observation of a decrease/increase of seismic energy in a channel reach can be linked to the deposition or uptake of sediment particles (see Sect. 6.2).

A linear array geometry is not suitable for the monitoring of all geomorphic processes. When monitoring in-channel processes, the location of the channel is usually known and this knowledge can be used to guide the flow location process. For location of hillslope processes, the accuracy will be correct in the array direction, when a source is located in the same valley near the channel (Burtin et al., 2009). However, the azimuth range for all the station pairs is limited in the longitudinal direction. Therefore, a source triggered perpendicularly is not imaged well and the location process can have an ambiguous outcome. As a consequence, a linear array is best suited for the study of propagating channel processes and can be used at the scale of a watershed.

ESURFD

2, 1217–1267, 2014

Seismic monitoring of geomorphic processes

A. Burtin et al.

Title Page

Abstract

Introduction

Conclusions

References

Tables

Figures



Back

Close

Full Screen / Esc

Printer-friendly Version

Interactive Discussion



5.2 Small aperture array

To better constrain the locations of spatially distributed geomorphic events, a second dimension has to be introduced into the array geometry. With a 2-dimensional (2-D) array and homogeneously distributed sites, the azimuths of all the station pairs cover the entire range of possible fluctuation. As a consequence, an accurate event location should be possible.

Small aperture arrays are a type of 2-D array that consists of several seismometers deployed in rings with a maximum aperture of 0.25–1 km. The advantage of using small distances between sensors is that coherent wave-packets can be observed across the entire array even for high-frequency content up to 30 Hz (Lacroix and Helmstetter, 2011; Lacroix et al., 2012), which is a key frequency band for the study of geomorphic processes. Moreover, the coherency of the seismic signals can be extracted for short time windows. Therefore, in the study of long duration and distributed sources, like snow and rock avalanches, the propagation of the event can be tracked by locating the different wave-packets. Lacroix and Helmstetter (2011) measured propagation velocities of rockfalls by tracking the different impacts along a slope. Similarly, Lacroix et al. (2012) successfully tracked the propagation of snow avalanches and estimated front velocities.

Small aperture arrays offer many advantages for the accurate location of sources, but, the location accuracy is dependent on the relative source-array distance. For distances less than two to three times the maximum array aperture, the source coordinates can be accurately retrieved. Location of more distant sources is still possible by resolving the azimuth of the incoming seismic wave front induced by the event (Almendros et al., 1999). In this case, an ambiguity in the location arises, since a direction pointing towards the source is obtained but no distance along this direction can be accurately found. To overcome this issue, one could increase the aperture of the array. However, as the distance between sensors increases, the coherency in the high frequency seismic signals could be lost. This would result in the inability to determine the

ESURFD

2, 1217–1267, 2014

Seismic monitoring of geomorphic processes

A. Burtin et al.

Title Page

Abstract

Introduction

Conclusions

References

Tables

Figures

◀

▶

◀

▶

Back

Close

Full Screen / Esc

Printer-friendly Version

Interactive Discussion



direction of the incoming seismic waves, especially from smaller sources. Therefore, the array size is a trade-off between the maximum distance at which events can be accurately located, and the event size that can be observed. Small aperture arrays are well suited for studying propagating geomorphic processes, but because of the size-distance trade-off, their use requires especially careful planning. For the surveying of geomorphic processes at a broader scale, it is necessary to operate larger arrays that surround all seismic sources of interest.

5.3 Local to regional 2-D array geometry

A 2-D array geometry with a large aperture (100 km) yields good constraints on the location of events within its perimeter. The setup is well suited for studying geomorphic processes distributed in a watershed or at even larger scales (Deparis et al., 2008; Lin et al., 2010; Chen et al., 2013; Burtin et al., 2013). For instance, using the permanent national seismic network of Switzerland, Dammeier et al. (2012) studied large rock-slides that occurred all over the Swiss Alps in past decades. With constrains from field observations and geotechnical studies, these authors managed to define a relation between seismic metrics, like the signal duration, envelope area and peak ground velocity to estimate the rock volume involved in the recorded events.

To study the finest details of geomorphic processes and the interactions amongst them, high-resolution monitoring is essential. For medium-size areas (up to $\sim 30 \text{ km}^2$), this can be achieved with a limited number of stations (~ 10 instruments) and an average sensor-distance of 1–5 km. Such an application is described in the following section.

6 Monitoring catchment dynamics

The advantages of seismic monitoring of geomorphic processes are fully revealed when it is applied to survey the geomorphic activity within an entire catchment. As

Seismic monitoring of geomorphic processes

A. Burtin et al.

Title Page

Abstract

Introduction

Conclusions

References

Tables

Figures

⏪

⏩

◀

▶

Back

Close

Full Screen / Esc

Printer-friendly Version

Interactive Discussion



an example we use some results from a campaign in the Illgraben debris-flow catchment in the Swiss Alps (Burtin et al., 2014). During the 2012 summer, an array of ten seismometers was deployed to study the surface activity of this steep, 10 km² catchment, which delivers 5–15 % of the sediment load of the Rhone River upstream of Lac Léman (Schlunegger et al., 2012). The summer season usually corresponds to a period of intense erosion due to frequent convective rainstorms (Berger et al., 2011). The seismic array was designed to monitor both slope processes and channel dynamics with instruments deployed around the catchment and along the main debris-flow channel, respectively (Fig. 7a). The 2-D array had an average station spacing of 2.9 km.

6.1 Monitoring links between various geomorphic processes

During a moderate rainstorm with a cumulative precipitation of 18 mm, three debris flow pulses were observed downstream. Meanwhile, the seismic array detected 15 rockfalls, located on frequently active slopes in intensely fragmented metasedimentary rocks (Bennett et al., 2013). Two of these events occurred before the initiation of the debris-flow sequence (Fig. 7). Their locations and timing during the rainstorm fit the interpretation that one of the sediment-laden flow pulses was triggered by these rockfalls. Further downstream, the debris flow erosion and/or the ground vibrations during passage of the pulse, which was initiated by rockfall seem to have caused channel bank collapse. In addition to evidence from the location, this interpretation is supported by a sudden increase of seismic energy coherent with an immediate input of sediments in the flow. The observations highlight the two-way coupling between slope and river processes within a single erosion episode of no more than a few tens of minutes.

6.2 Channel processes and dynamics

The stations deployed along the debris-flow channel were used to seismically measure some characteristics of the sediment-laden flows. The flow velocity was inferred by the arrival time of seismic pulses at each station (Burtin et al., 2014). Average velocities

Seismic monitoring of geomorphic processes

A. Burtin et al.

Title Page

Abstract

Introduction

Conclusions

References

Tables

Figures



Back

Close

Full Screen / Esc

Printer-friendly Version

Interactive Discussion



mic signal observed at a check dam, where bedload impact rates were also recorded. This impact record indicated a relative lack of bedload in the flow, consistent with the absence of low frequency content in the seismic signal (e.g., Huang et al., 2007).

6.3 Interests of catchment seismic monitoring and generalization

5 The Illgraben experiment demonstrates the potential of seismic monitoring to capture the links between various geomorphic processes. In conventional techniques, these interactions are generally inferred a posteriori and they often remain unresolved, but seismic monitoring makes their study in real-time possible. Furthermore, traditional field observations are generally made on large magnitude events, since their signa-
10 ture in the landscape is easily identifiable. With seismic techniques small events can be explored and their role in landscape dynamics quantified. Finally, ambient seismic monitoring can be used to study processes in locations where direct field access is difficult or dangerous.

Seismic monitoring is a valuable tool for quantification of geomorphic activity for sci-
15 entific purposes, but it is also interesting for implementation in warning systems. In the Illgraben, a hazardous debris flow event could be detected at its inception high up in the catchment, possibly about 15 min before it debouches into settled land. Incorporating a seismic system into a real-time warning network would therefore allow the detection of events much earlier than the existing in-stream warning system allows. Minutes thus
20 gained can make a difference when alerting inhabitants of exposed areas. Continuous monitoring of the flow velocity and seismic energy offers the opportunity of real-time observation of geomorphic processes. This information could be used to regularly update the warning status and to direct mitigation efforts.

A dense seismic array in a limited-size catchment made it possible to observe pro-
25 cess details in the Illgraben. To achieve similar resolution in larger catchments a commensurately larger number of seismic sensors must be deployed. An increase in the average spacing between sensors would affect the ability to detect and study smaller geomorphic events and the precision of event location. Monitoring resolution is also

**Seismic monitoring
of geomorphic
processes**

A. Burtin et al.

Title Page

Abstract

Introduction

Conclusions

References

Tables

Figures



Back

Close

Full Screen / Esc

Printer-friendly Version

Interactive Discussion



affected by factors such as the seismic noise level or the medium (catchment substrate) properties. Thus, there exists a trade-off between the size/density of a seismic array and the resolution that can be achieved when mapping surface activity. The exact nature of this trade-off remains to be evaluated using different environmental and instrumental settings.

7 Outlook

Seismic instruments now allow the continuous monitoring of distributed and varied surface processes, yielding details that are difficult to acquire with classic approaches in geomorphology. The analysis of seismic signals generated by geomorphic events makes it possible to determine what happens where, when in a landscape and to resolve this geomorphic activity on the time scale of external forcing by, for example, meteorological events. Moreover, it opens a clear window on links and feedbacks between surface processes and landscape domains, and it holds the promise of real time detection and remote observation of hazardous process events. The potential of seismic monitoring has been demonstrated for diverse types of surface activity, including bedload transport, hillslope processes, and landscape erosion from oceanic coasts to steep mountain headwaters.

All applications described above share the necessity of calibration to translate the seismic signal into a geomorphic quantity and, thereby, to go beyond qualitative observation. This calibration has, for example, been performed for some surrogate monitoring methods for bedload transport (e.g., Rickenmann et al., 2012, 2014). However, it is a painstaking task, the feasibility of which is subject to the specificities of the environment. In the case of bedload transport, the highest transport rates and largest mobile boulders in steep mountain rivers can, at times, exceed the capacity of available sampling devices, making direct calibration of seismic signals over the full range of bedload particle sizes and transport rates challenging. Moreover, it is difficult to imagine the existence of a universal frequency-size relation since recorded frequencies are affected

Seismic monitoring of geomorphic processes

A. Burtin et al.

Title Page

Abstract

Introduction

Conclusions

References

Tables

Figures



Back

Close

Full Screen / Esc

Printer-friendly Version

Interactive Discussion



Seismic monitoring of geomorphic processes

A. Burtin et al.

Title Page

Abstract

Introduction

Conclusions

References

Tables

Figures



Back

Close

Full Screen / Esc

Printer-friendly Version

Interactive Discussion



by the source-receiver distances and medium properties. Therefore, the relation between frequency content and bedload size distribution will likely be site-dependent. To overcome these limitations and to quantify processes, one can resort to a modelling approach. Tsai et al. (2012) reproduced the hysteresis loop of seismic noise and water discharge observed in the Hi-CLIMB seismic data acquired along the Trisuli River (Fig. 3) with a simple sediment transport model including a representation of seismic energy induced by vertical particle impacts. With assumptions on the bedload flux and the grain size distribution, these authors were able to reproduce the fluctuation of seismic energy due to changes in river hydrodynamics (Fig. 9). Tsai et al. (2012) thus developed a first order direct model to simulate seismic data that can, at least in principle, be used in an inverse approach to retrieve bedload flux and grain size distribution. Future developments will need to explore more realistic sediment transport models, for example by including all modes of transport, including saltation, rolling and sliding on the river bed. In addition, field and laboratory tests of the model on high quality independent data are necessary.

Another important challenge for the development of a seismic survey of bedload transport is constituted by the fact that seismic instruments are sensitive to the “noise” of the flowing water in river signals, and the frequencies affected by this disturbance seem to overlap with those from bedload transport. To obtain a correct estimate of sediment transport, it is, therefore, important to discriminate the water noise from the bedload signal. A few studies have started to explore the seismic sources of flowing water, and although it looks possible to isolate it from bedload, the origin of the seismic noise is still discussed (e.g., Burtin et al., 2011; Schmandt et al., 2013).

For other future developments, it is important to quantify the influence of the array density on the spatial resolution of processes. This would allow optimal tailoring of arrays to the objectives of a given study. Recent work has clearly indicated the existence of a trade-off between the average instrument spacing and the ability to detect, locate and characterize the smallest events. This is an important feature to keep in mind also for the eventual development of warning systems, covering relatively large

regions, for the purpose of alerting authorities to the occurrence, magnitude and location of a catastrophic landslide. In regions where regular communication means are limited or disrupted after a natural disaster, seismic monitoring could allow for rapid response civil defence. This remote detection application complements the interest of seismic monitoring of debris flows or other flash flood events, including lake outbursts. Event detection is made at the inception and we can track its evolution to update the impact hazard on nearby populated area during its propagation.

We anticipate that seismic monitoring of geomorphic processes will become a standard tool in the study of landscape dynamics and for the monitoring of geomorphic hazards. The required instruments and techniques along with most of the data processing approaches are tried and tested and routinely deployed in mainstream seismology. However, to make the methodology viable for geomorphological purposes, further work is required directed at the quantification of surface processes and the translation of seismic signals into geomorphic observations. This will be done through calibration experiments and modelling approaches, which encompass the main features of geomorphic processes. Once this is achieved, the technique will allow the continuous and detailed mapping of the surface activity in a landscape at very high temporal resolution and specified spatial precision.

Acknowledgements. This manuscript was instigated at an International Workshop of Acoustic and Seismic Monitoring of Bedload and Mass Movements held in Birmensdorf-Zürich, 4–7 September 2013. The authors would like to thank the workshop organizers, and especially Dieter Rickenmann and Johnathan B. Laronne for their persistent encouragement.

The service charges for this open access publication have been covered by a Research Centre of the Helmholtz Association.

ESURFD

2, 1217–1267, 2014

Seismic monitoring of geomorphic processes

A. Burtin et al.

Title Page

Abstract

Introduction

Conclusions

References

Tables

Figures



Back

Close

Full Screen / Esc

Printer-friendly Version

Interactive Discussion



References

- Adams, P. N., Anderson, R. S., and Revenaugh, J.: Microseismic measurement of wave-energy delivery to a rocky coast, *Geology*, 30, 895–898, doi:10.1130/0091-7613(2002)030<0895:MMOWED>2.0.CO;2, 2002.
- 5 Allstadt, K.: Extracting source characteristics and dynamics of the August 2010 Mount Meager landslide from broadband seismograms, *J. Geophys. Res.-Earth*, 118, 1472–1490, doi:10.1002/jgrf.20110, 2013.
- Almendros, J., Ibanez, J. M., Alguacil, G., and Del Pezzo, E.: Array analysis using circular-wave-front geometry: an application to locate the nearby seismo-volcanic source, *Geophys. J. Int.*, 136, 159–170, 1999.
- 10 Andermann, C., Crave, A., Gloaguen, R., Davy, P., and Bonnet, S.: Connecting source and transport: suspended sediments in the Nepal Himalayas, *Earth Planet Sc. Lett.*, 351–352, 158–170, doi:10.1016/j.espl.2012.06.059, 2012.
- Assink, J. D., Evers, L. G., Holleman, I., and Paulssen, H.: Characterization of infrasound from lightning, *Geophys. Res. Lett.*, 35, L15802, doi:10.1029/2008GL034193, 2008.
- 15 Attal, M. and Lavé, J.: Changes of bedload characteristics along the Marsyandi River (central Nepal): implications for understanding hillslope sediment supply, sediment load evolution along fluvial networks, and denudation in active orogenic belts, edited by: D. Willett, S. et al., *Spec. Pap. Geol. Soc. Am.*, 398, 143–171, doi:10.1130/2006.2398(09), 2006.
- 20 Badoux, A., Graf, C., Rhyner, J., Kuntner, R., and McArdell, B. W.: A debris-flow alarm system for the Alpine Illgraben catchment: design and performance, *Nat. Hazards*, 49, 517–539, doi:10.1007/s11069-008-9303-x, 2009.
- Bänziger, R. and Burch, H.: Acoustic sensors as indicators for bed load transport in a mountain torrent, in: *Hydrology in Mountainous Regions I*, edited by: Lang, H. and Musy, A., IAHS Publication no. 193, IAHS, Wallingford, 207–214, 1990.
- 25 Barros, T. J. and Lang, A. P.: Monitoring the monsoon in the Himalayas: observations in central Nepal, June 2001, *Mon. Weather Rev.*, 131, 1408–1427, 2003.
- Bennett, G. L., Molnar, P., McArdell, B. W., Schlunegger, F., and Burlando, P.: Patterns and controls of sediment production, transfer and yield in the Illgraben, *Geomorphology*, 188, 68–82, doi:10.1016/j.geomorph.2012.11.029, 2013.
- 30

ESURFD

2, 1217–1267, 2014

Seismic monitoring of geomorphic processes

A. Burtin et al.

Title Page

Abstract

Introduction

Conclusions

References

Tables

Figures



Back

Close

Full Screen / Esc

Printer-friendly Version

Interactive Discussion



Seismic monitoring of geomorphic processes

A. Burtin et al.

Title Page

Abstract

Introduction

Conclusions

References

Tables

Figures



Back

Close

Full Screen / Esc

Printer-friendly Version

Interactive Discussion



- Bensen, G. D., Ritzwoller, M. H., Barmin, M. P., Levshin, A. L., Lin, F., Moschetti, M. P., Shapiro, N. M., and Yang, Y.: Processing seismic ambient noise data to obtain reliable broadband surface wave dispersion measurements, *Geophys. J. Int.*, 169, 1239–1260, 2007.
- Berger, C., McArdell, B. W., and Schlunegger, F.: Direct measurement of channel erosion by debris flows, Illgraben, Switzerland, *J. Geophys. Res.*, 116, F01002, doi:10.1029/2010JF001722, 2011.
- Berti, M., Genevois, R., LaHusen, R., Simoni, A., and Tecca, P. R.: Debris flow monitoring in the Acquabona watershed (Dolomites, Italian Alps), *Phys. Chem. Earth Pt. B*, 25, 707–715, 2000.
- Brodsky, E. E., Gordeev, E., and Kanamori, H.: Landslide basal friction as measured by seismic waves, *Geophys. Res. Lett.*, 30, 2236, doi:10.1029/2003GL018485, 2003.
- Burtin, A., Bollinger, L., Vergne, J., Cattin, R., and Nábělek, J. L. Spectral analysis of seismic noise induced by rivers: a new tool to monitor spatiotemporal changes in stream hydrodynamics, *J. Geophys. Res.*, 113, B05301, doi:10.1029/2007JB005034, 2008.
- Burtin, A., Bollinger, L., Cattin, R., Vergne, J., and Nábělek, J. L.: Spatiotemporal sequence of Himalayan debris flow from analysis of high-frequency seismic noise, *J. Geophys. Res.*, 114, F04009, doi:10.1029/2008JF001198, 2009.
- Burtin, A., Vergne, J., Rivera, L., and Dubernet, P.-P.: Location of river induced seismic signal from noise correlation functions, *Geophys. J. Int.*, 182, 1161–1173, doi:10.1111/j.1365-246X.2010.04701.x, 2010.
- Burtin, A., Cattin, R., Bollinger, L., Vergne, J., Steer, P., Robert, A., Findling, N., and Tiberi, C.: Towards the hydrologic and bed load monitoring from high-frequency seismic noise in a braided river: the “torrent de St Pierre”, French Alps., *J. Hydrol.*, 408, 43–53, doi:10.1016/j.jhydrol.2011.07.014, 2011.
- Burtin, A., Hovius, N., Milodowski, D. T., Chen, Y.-G., Wu, Y.-M., Lin, C.-W., Chen, H., Emberson, R., and Leu, P.-L.: Continuous catchment-scale monitoring of geomorphic processes with a 2-D seismological array, *J. Geophys. Res. Earth Surf.*, 118, 1956–1974, doi:10.1002/jgrf.20137, 2013.
- Burtin, A., Hovius, N., McArdell, B. W., Turowski, J. M., and Vergne, J.: Seismic constraints on dynamic links between geomorphic processes and routing of sediment in a steep mountain catchment, *Earth Surf. Dynam.*, 2, 21–33, doi:10.5194/esurf-2-21-2014, 2014.
- Chang, L.-W., Hsieh, P.-F., and Lin, C.-W.: Landslide identification based on FORMOSAT-2 multispectral imagery by wavelet-based texture feature extraction, *Geoscience and Remote*

**Seismic monitoring
of geomorphic
processes**

A. Burtin et al.

Title Page

Abstract

Introduction

Conclusions

References

Tables

Figures

◀

▶

◀

▶

Back

Close

Full Screen / Esc

Printer-friendly Version

Interactive Discussion



- Sensing Symposium, IGARSS 2006, IEEE International Conference, Denver, Colorado, US, 31 July–4 August 2006, 3317–3320, doi:10.1109/IGARSS.2006.852, 2006.
- Chen, C.-H., Chao, W.-A., Wu, Y.-M., Zhao, L., Chen, Y.-G., Ho, W.-Y., Lin, T.-L., Kuo, K.-H., and Chang, J.-M.: A seismological study of landquakes using a real-time broad-band seismic network, *Geophys. J. Int.*, 194, 885–898, doi:10.1093/gji/ggt121, 2013.
- Comiti, F., Marchi, L., Macconi, P., Arattano, M., Bertoldi, G., Borga, M., Brardinoni, F., Cavalli, M., D'Agostino, V., Penna, D., and Theule, J.: A new monitoring station for debris flows in the European Alps : first observations in the Gadria basin, *Nat. Hazards*, 73, 1175–1198, doi:10.1007/s11069-014-1088-5, 2014.
- Cook, K. L., Turowski, J. M., and Hovius, N.: A demonstration of the importance of bedload transport for fluvial bedrock erosion and knickpoint propagation, *Earth Surf. Proc. Land.*, 38, 683–695, doi:10.1002/esp.3313, 2013.
- Dammeier, F., Moore, J. R., Haslinger, F., and Loew, S.: Characterization of alpine rock-slides using statistical analysis of seismic signals, *J. Geophys. Res.*, 116, F04024, doi:10.1029/2011JF002037, 2011.
- De Angelis, S. and Bodin, P.: Watching the wind; seismic data contamination at long periods due to atmospheric pressure-field-induced tilting, *B. Seismol. Soc. Am.*, 102, 1255–1265, doi:10.1785/0120110186, 2012.
- Densmore, A. L., Anderson, R. S., McAdoo, B. G., and Ellis, M. A.: Hillslope evolution by bedrock landslides, *Science*, 275, 369–372, doi:10.1126/science.275.5298.369, 1997.
- Deparis, J., Jongmans, D., Cotton, F., Baillet, L., Thouvenot, F., and Hantz, D.: Analysis of rock-fall and rock-fall avalanche seismograms in the French Alps. *B. Seismol. Soc. Am.*, 98, 1781–1796, doi:10.1785/0120070082, 2008.
- Ekdström, G. and Stark, C. P.: Simple scaling of catastrophic landslide dynamics, *Science*, 339, 1416–1419, doi:10.1126/science.1232887, 2013.
- Ekdström, G., Nettles, M., and Abers, G. A.: Glacial Earthquakes, *Science*, 302, 622–624, doi:10.1126/science.1088057, 2003.
- Etter, M.: Zur Erfassung des Geschiebetransportes mit Hydrophonen, Diploma Thesis, University of Berne and Swiss Federal Research Institute WSL, Birmensdorf, 110 pp., 1996.
- Favreau, P., Mangeney, A., Lucas, A., Crosta, G., and Bouchut, F.: Numerical modeling of landquakes, *Geophys. Res. Lett.*, 37, L15305, doi:10.1029/2010GL043512, 2010.

Seismic monitoring of geomorphic processes

A. Burtin et al.

Title Page

Abstract

Introduction

Conclusions

References

Tables

Figures



Back

Close

Full Screen / Esc

Printer-friendly Version

Interactive Discussion



- Gabet, E. J., Burbank, D. W., Pratt-Sitaula, B., Putkonen, J., and Bookhagen, B.: Modern erosion rates in the High Himalayas of Nepal, *Earth Planet. Sc. Lett.*, 267, 482–494, doi:10.1016/j.epsl.2007.11.059, 2008.
- Govi, M., Maraga, F., and Moia, F.: Seismic detectors for continuous bed load monitoring in a gravel stream, *Hydrolog. Sci. J.*, 38, 123–132, 1993.
- Gray, J. R., Laronne, J. B., and Marr, J. D. G.: *Bedload-surrogate Monitoring Technologies*, US Geological Survey Scientific Investigations Report 2010–5091, US Geological Survey, Reston, VA, 2010.
- Gröchenig, K.: *Foundations of Time-Frequency Analysis*, Birkhäuser, Boston, 359 pp., 2001.
- Gu, Y. J., Dublanko, C., Lerner-Lam, A., Brzak, K., and Steckler, M.: Probing the sources of ambient seismic noise near the coasts of southern Italy, *Geophys. Res. Lett.*, 34, L22315, doi:10.1029/2007GL031967, 2007.
- Guzzetti, F., Cardinali, M., Reichenbach, P., and Carrara, A.: Comparing landslide maps: a case study in the upper Tiber River basin, central Italy, *Environ. Manage.*, 25, 247–263, doi:10.1007/s002679910020, 2000.
- Havskov, G. and Alguacil, J.: *Instrumentation in earthquake seismology*, in: *Modern Approaches in Geophysics*, 22, Springer, Dordrecht, the Netherlands, 360 pp., 2006.
- Helley, E. and Smith, W.: *Development and Calibration of a Pressure-Difference Bedload Sampler*, US Geological Survey Open-File Report 18, Menlo Park, California, US, 1971.
- Helmstetter, A. and Garambois, S.: Seismic monitoring of Séchilienne rockslide (French Alps): analysis of seismic signals and their correlation with rainfalls, *J. Geophys. Res.*, 115, F03016, doi:10.1029/2009JF001532, 2010.
- Hovius, N., Stark, C. P., Chu, H.-T., and Lin, J.-C.: Supply and Removal of Sediment in a Landslide-Dominated Mountain Belt: central Range, Taiwan, *J. Geol.*, 118, 73–89, doi:10.1086/314387, 2000.
- Hsu, L., Finnegan, N. J., and Brodsky, E. E.: A seismic signature of river bedload transport during storm events, *Geophys. Res. Lett.*, 38, L13407, doi:10.1029/2011GL047759, 2011.
- Huang, C. J., Shieh, C. L., and Yin, H. Y.: Laboratory study of the underground sound generated by debris flows, *J. Geophys. Res.*, 109, F01008, doi:10.1029/2003JF000048, 2004.
- Huang, C.-J., Yin, H.-Y., Chen, C.-Y., Yeh, C.-H., and Wang, C.-L.: Ground vibrations produced by rock motions and debris flows, *J. Geophys. Res.*, 112, F02014, doi:10.1029/2005JF000437, 2007.

Seismic monitoring of geomorphic processes

A. Burtin et al.

Title Page

Abstract

Introduction

Conclusions

References

Tables

Figures

◀

▶

◀

▶

Back

Close

Full Screen / Esc

Printer-friendly Version

Interactive Discussion



- Iverson, R. M.: Landslide triggering by rain infiltration, *Water Resour. Res.*, 36, 1897–1910, doi:10.1029/2000WR900090, 2000.
- Jurkevics, A.: Polarization analysis of three-component array data, *B. Seismol. Soc. Am.*, 785, 1725–1743, 1988.
- 5 Kanamori, H. and Given, J. W.: Analysis of long-period seismic waves excited by the May 18, 1980, eruption of Mount St. Helens – a terrestrial monopole?, *J. Geophys. Res.*, 87, 5422–5432, doi:10.1029/JB087iB07p05422, 1982.
- Lacroix, P. and Helmstetter, A.: Location of seismic signals associated with microearthquakes and rockfalls on the Séchilienne landslide, French Alps. *B. Seismol. Soc. Am.*, 101, 341–353, doi:10.1785/0120100110, 2011.
- 10 Lacroix, P., Grasso, J.-R., Roulle, J., Giraud, G., Goetz, D., Morin, S., and Helmstetter, A.: Monitoring of snow avalanches using a seismic array: location, speed estimation, and relationships to meteorological variables, *J. Geophys. Res.*, 117, F01034, doi:10.1029/2011JF002106, 2012.
- 15 LaHusen, R.: Acoustic Flow Monitor System – User Manual, US Geological Survey, Open-File Report 02–429, 16 pp., 2005.
- Lay, T. and Wallace, T. C.: *Modern Global Seismology*, Academic Press, San Diego, Calif., 521 pp., 1995.
- Lee, J. C. and Jahr, W. H. K.: HYP071: a computer program for hypocenter, magnitude and first motion pattern of local earthquakes, *US Geol. Surv. Open File Rep.*, Menlo Park, California, US, 100 pp., 1972.
- 20 Leprettre, B., Navarre, J.-P., Panel, J. M., Touvier, F., Taillefer, A., and Roulle, J.: Prototype for operational seismic detection of natural avalanches, *Ann. Glaciol.*, 26, 313–318, 1998.
- Lin, C. H., Kumagai, H., Ando, M., and Shin, T. C.: Detection of landslides and submarine slumps using broadband seismic networks, *Geophys. Res. Lett.*, 37, L22309, doi:10.1029/2010GL044685, 2010.
- 25 Lin, C.-W., Chang, W.-S., Liu, S.-H., Tsai, T.-T., Lee, S.-P., Tsang, Y.-C., Shieh, C.-L., and Tseng, C.-M.: Landslides triggered by the 7 August 2009 Typhoon Morakot in southern Taiwan, *Eng. Geol.*, 123, 3–12, doi:10.1016/j.enggeo.2011.06.007, 2011.
- 30 McNamara, D. E. and Buland, R. P.: Ambient noise levels in the continental United States, *B. Seismol. Soc. Am.*, 94, 1517–1527, doi:10.1785/012003001, 2004.

Seismic monitoring of geomorphic processes

A. Burtin et al.

Title Page

Abstract

Introduction

Conclusions

References

Tables

Figures

◀

▶

◀

▶

Back

Close

Full Screen / Esc

Printer-friendly Version

Interactive Discussion



Meunier, P., Métivier, F., Lajeunesse, E., Mériaux, A.-S., and Faure, J.: Flow pattern and sediment transport in a braided river: the “torrent de St Pierre” (French Alps), *J. Hydrol.*, 330, 496–505, 2006.

Meunier, P., Burtin, A., Houssais, M., Souloumiac, P., and Métivier, F.: Discharge and sediment transport of a small braiding river inferred from seismic survey, *Geophysical Research Abstracts*, 13, EGU General Assembly, Abstract EGU2011–13076, Vienna, 2011.

Mizuyama, T., Laronne, J. B., Nonaka, M., Sawada, T., Satofuka, Y., Matsuoka, M., Yamashita, S., Sako, Y., Tamaki, S., Watari, M., Yamaguchi, S., and Tsuruta, K.: Calibration of a passive acoustic bedload monitoring system in Japanese mountain rivers, in: *Bedload-Surrogate Monitoring Technologies*, edited by: Gray, J. R., Laronne, J. B., and Marr, J. D. G., US Geological Survey Scientific Investigations Report 2010–5091, US Geological Survey, Reston, VA, 296–318, 2010a.

Mizuyama, T., Oda, A., Laronne, J. B., Nonaka, M., and Matsuoka, M.: Laboratory tests of a Japanese pipe geophone for continuous acoustic monitoring of coarse bedload, in: *Bedload-Surrogate Monitoring Technologies*, edited by: Gray, J. R., Laronne, J. B., and Marr, J. D. G., US Geological Survey Scientific Investigations Report 2010–5091, US Geological Survey, Reston, VA, 319–335, 2010b.

Nábělek, J., Hetényi, G., Vergne, J., Sapkota, S., Kafle, B., Jiang, M., Su, H., Chen, J., Huang, B.-S., and the Hi-CLIMB Team: Underplating in the Himalaya-Tibet collision zone revealed by the Hi-CLIMB experiment, *Science*, 325, 1371–1374, doi:10.1126/science.1167719, 2009.

Percival, D. B. and Walden, A. T.: *Spectral Analysis for Physical Applications: Multitaper and Conventional Univariate Techniques*, Cambridge Univ. Press, Cambridge, UK, 1993.

Rhie, J. and Romanowicz, B.: A study of the relation between ocean storms and the Earth’s hum, *Geochem. Geophys. Geosy.*, 7, Q10004, doi:10.1029/2006GC001274, 2006.

Rickenmann, D. and Fritschi, B.: Bedload transport measurements using piezoelectric impact sensors and geophones, in: *Bedload-Surrogate Monitoring Technologies*, edited by: Gray, J. R., Laronne, J. B., and Marr, J. D. G., US Geological Survey Scientific Investigations Report 2010–5091, US Geological Survey, Reston, VA, 407–423, 2010.

Rickenmann, D. and McArdeell, B. W.: Continuous measurement of sediment transport in the Erlenbach stream using piezoelectric bedload impact sensors, *Earth Surf. Proc. Land.*, 32, 1362–1378, 2007.

Seismic monitoring of geomorphic processes

A. Burtin et al.

Title Page

Abstract

Introduction

Conclusions

References

Tables

Figures



Back

Close

Full Screen / Esc

Printer-friendly Version

Interactive Discussion



- Rickenmann, D., Turowski, J. M., Fritschi, B., Klaiber, A., and Ludwig, A.: Bedload transport measurements at the Erlenbach stream with geophones and automated basket samplers, *Earth Surf. Proc. Land.*, 37, 1000–1011. doi:10.1002/esp.3225, 2012.
- 5 Rickenmann, D., Turowski, J. M., Fritschi, B., Wyss, C., Laronne, J., Barzilai, R., Reid, I., Kreisler, A., Aigner, J., Seitz, H., and Habersack, H.: Bedload transport measurements with impact plate geophones: comparison of sensor calibration in different gravel-bed streams, *Earth Surf. Process. Land.*, 39, 928–942, doi: 10.1002/esp.3499, 2014.
- Scarpetta, S., Giudicepietro, F., Ezin, E. C., Petrosino, S., Del Pezzo, E., Martini and M. Marinaro, M.: Automatic classification of seismic signal at Mt. Vesuvius Volcano, Italy, using neural networks, *B. Seismol. Soc. Am.*, 95, 185–196, doi:10.1785/0120030075, 2005.
- 10 Schlunegger, F., Norton, K., and Caduff, R.: Hillslope processes in temperate environments, in: *Treatise in Geomorphology 3*, edited by: Marston, R. and Stoffel, M., Mountain and Hillslope Geomorphology, Elsevier, London, 337–354, 2012.
- Schmandt, B., Aster, R. C., Scherler, D., Tsai, V. C., and Karlstrom, K.: Multiple fluvial processes detected by riverside seismic and infrasound monitoring of a controlled flood in the Grand Canyon, *Geophys. Res. Lett.*, 40, 4858–4863, doi:10.1002/grl.50953, 2013.
- 15 Shapiro, N. M., Ritzwoller, M. H., and Bensen, G. D.: Source location of the 26 sec microseism from cross-correlations of ambient seismic noise, *Geophys. Res. Lett.*, 33, L18310, doi:10.1029/2006GL027010, 2006.
- 20 Sklar, L. and Dietrich, W. E.: Sediment and rock strength controls on river incision into bedrock, *Geology*, 29, 1087–1090, doi:10.1130/0091-7613(2001)029<1087:SARSCO>2.0.CO;2, 2001.
- St. Lawrence, W. and Williams, T. R.: Seismic signals associated with avalanches, *J. Glaciol.*, 17, 516–526, 1976.
- 25 Suriñach, E., Sabot, F., Furdada, G., and Vilaplana, J.-M.: Study of seismic signals of artificially released snow avalanches for monitoring purposes, *Phys. Chem. Earth Pt. B*, 25, 721–727, doi:10.1016/S1464-1909(00)00092-7, 2000.
- Suwa, H., Yamakoshi, T., and Sato, K.: Relationship between debris-flow discharge and ground vibration, in: *Debris-Flow Hazards Mitigation: Mechanics, Prediction, and Assessment*, edited by: Wieczorek, G. F., and Naeser, N. D., Proc. 2nd Intern. Conf., Taipei, Taiwan, 16–18 August 2000, Rotterdam, Balkema Press, 311–318, 2000.
- 30 Taniguchi, S., Itakura, Y., Miyamoto, K., and Kurihara, J.: A new acoustic sensor for sediment discharge measurement, in: *Erosion and Sediment Transport Monitoring Programs in River*

Seismic monitoring of geomorphic processes

A. Burtin et al.

Title Page

Abstract

Introduction

Conclusions

References

Tables

Figures



Back

Close

Full Screen / Esc

Printer-friendly Version

Interactive Discussion



Basins, edited by: Bogen, J., Walling, D. E., Day, T. J., IAHS Publication No. 210, IAHS, Wallingford, 135–142, 1992.

Thomson, D. J.: Spectrum estimation and harmonic analysis, P. IEEE, 70, 1055–1096, 1982.

Toksöz, M. N. and Johnson, D. H.: Seismic Wave Attenuation, edited by: Toksöz, M. N. and Johnson, D. H., Society of Exploration Geophysicists, Tulsa, OK, 1981.

Tsai, V. C., Minchew, B. Lamb, M. P., and Ampuero, J.-P.: A physical model for seismic noise generation from sediment transport in rivers, Geophys. Res. Lett., 39, L02404, doi:10.1029/2011GL050255, 2012.

Turowski, J. M. and Rickenmann, D.: Measuring the statistics of bedload transport using indirect sensors, J. Hydraul. Eng., 137, 116–121. doi:10.1061/(ASCE)HY.1943-7900.0000277, 2011.

Turowski, J. M., Lague, D., and Hovius, N.: Cover effect in bedrock abrasion: a new derivation and its implications for the modeling of bedrock channel morphology, J. Geophys. Res., 112, F04006, doi:10.1029/2006JF000697, 2007.

Turowski, J. M., Yager, E. M., Badoux, A., Rickenmann, D., and Molnar, P.: The impact of exceptional events on erosion, bedload transport and channel stability in a step-pool channel, Earth Surf. Proc. Land., 34, 1661–1673, doi:10.1002/esp.1855, 2009.

Turowski, J. M., Böckli, M., Rickenmann, D., and Beer, A. R.: Field measurements of the energy delivered to the channel bed by moving bed load and links to bedrock erosion, J. Geophys. Res., 118, 2438–2450, doi:10.1002/2013JF002765, 2013.

Van Herwijnen, A. and Schweizer, J.: Seismic sensor array for monitoring an avalanche start zone: design, deployment and preliminary results, J. Glaciol., 57, 267–276, doi:10.3189/002214311796405933, 2011.

Vilajosana, I., Suriñach, E., Abellán, A., Khazaradze, G., Garcia, D., and Llosa, J.: Rockfall induced seismic signals: case study in Montserrat, Catalonia, Nat. Hazards Earth Syst. Sci., 8, 805–812, doi:10.5194/nhess-8-805-2008, 2008.

Walker, K. T., Shelby, R., Hedlin, M. A. H., de Groot-Hedlin, C., and Vernon, F.: Western U. S. Infrasonic Catalog: illuminating infrasonic hot spots with the USArray, J. Geophys. Res., 116, B12305, doi:10.1029/2011JB008579, 2011.

Welch, P. D.: The use of fast Fourier transform for the estimation of power spectra: a method based on time averaging over short, modified periodograms, IEEE T. Acoust. Speech., 15, 70–73, 1967.

ESURFD

2, 1217–1267, 2014

Seismic monitoring of geomorphic processes

A. Burtin et al.

Title Page

Abstract

Introduction

Conclusions

References

Tables

Figures



Back

Close

Full Screen / Esc

Printer-friendly Version

Interactive Discussion



Seismic monitoring of geomorphic processes

A. Burtin et al.

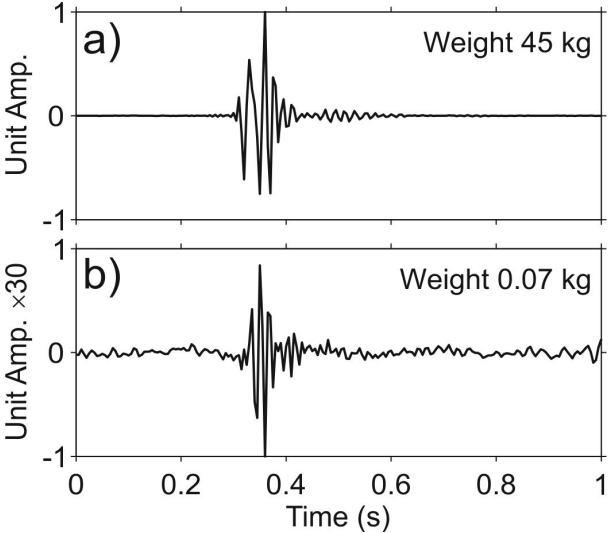


Figure 1. Rock drop experiment on a dry gravel-bed channel in the French Alps, Pré de Madame Carle (Burtin et al., 2011). Particles with a weight of 45 kg (a) and 0.07 kg (b) fall from a height of 1 m. The ground vibrations are recorded by a seismometer located 7 m away from the impact. Amplitude is normalized for each drop but note that the 45 kg particle has a seismic signal 30 times larger than the 0.07 kg.

Discussion Paper | Discussion Paper | Discussion Paper | Discussion Paper | Discussion Paper

Title Page	
Abstract	Introduction
Conclusions	References
Tables	Figures
◀	▶
◀	▶
Back	Close
Full Screen / Esc	
Printer-friendly Version	
Interactive Discussion	



Seismic monitoring of geomorphic processes

A. Burtin et al.

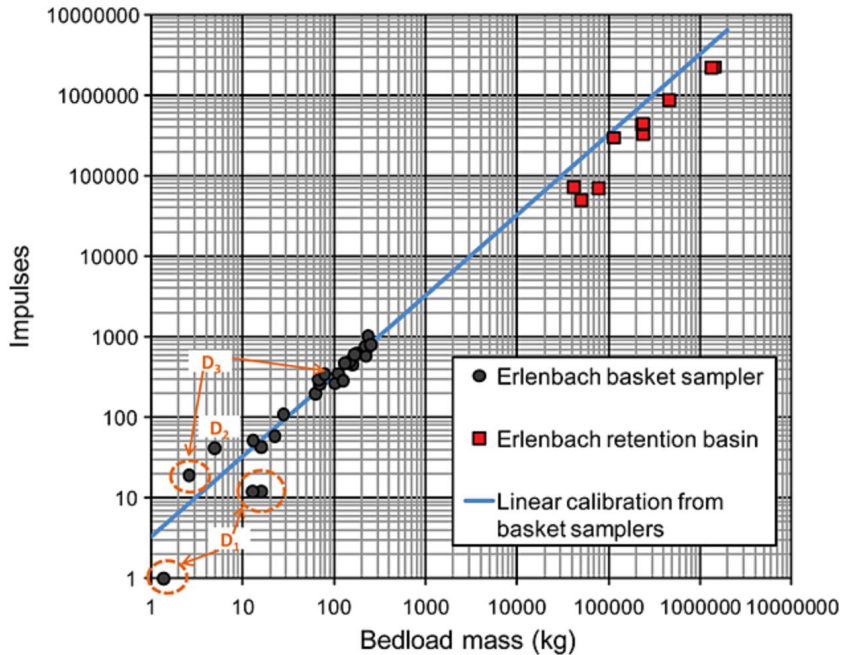


Figure 2. Comparison of calibration measurements of geophones and sediment transport from basket samplers (dots) and retention basin (squares) in the in the Erlenbach, Switzerland. After Rickenmann et al. (2012).

Title Page

Abstract Introduction

Conclusions References

Tables Figures

◀ ▶

◀ ▶

Back Close

Full Screen / Esc

Printer-friendly Version

Interactive Discussion



Seismic monitoring of geomorphic processes

A. Burtin et al.

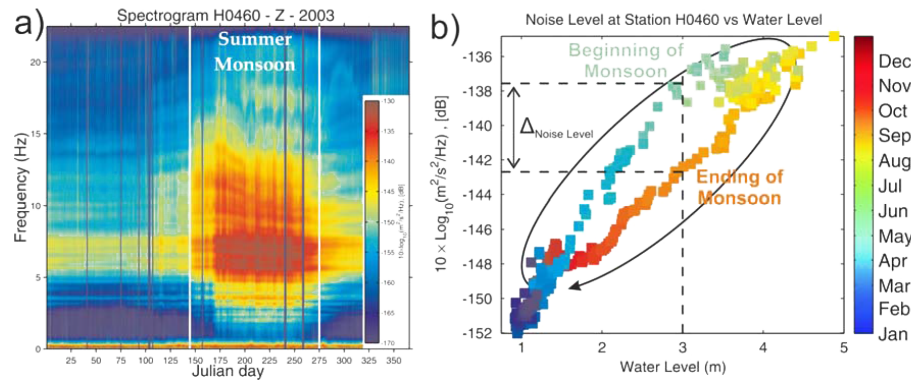


Figure 3. (a) Time-frequency analysis of the vertical seismic signal recorded at station H0460 from the Hi-CLIMB experiment in Nepal. Red and blue colours represent high and low level of seismic energy given in decibel relative to the velocity. (b) Daily average seismic energy in the [3–15] Hz frequency band at H0460 (a) as a function of the daily measured water level of the Trisuli River. Each square stands for a day and the colour the time evolution during 2003. After Burtin et al. (2008).

**Seismic monitoring
of geomorphic
processes**

A. Burtin et al.

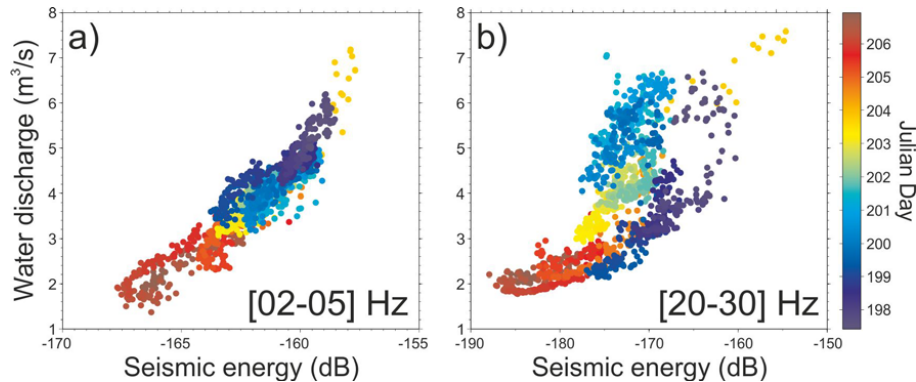


Figure 4. Comparison of the water discharge of the “torrent de St Pierre”, French Alps as a function of the recorded seismic energy in decibel for a [2–5] Hz **(a)** and [20–30] Hz **(b)** frequency band. The [2–5] Hz frequency band best explains the discharge fluctuation whereas the higher frequency bands loose this relation. These bands are interpreted to monitor the bedload transport and can be discriminated from the flowing water signal.

Title Page

Abstract

Introduction

Conclusions

References

Tables

Figures



Back

Close

Full Screen / Esc

Printer-friendly Version

Interactive Discussion



**Seismic monitoring
of geomorphic
processes**

A. Burtin et al.

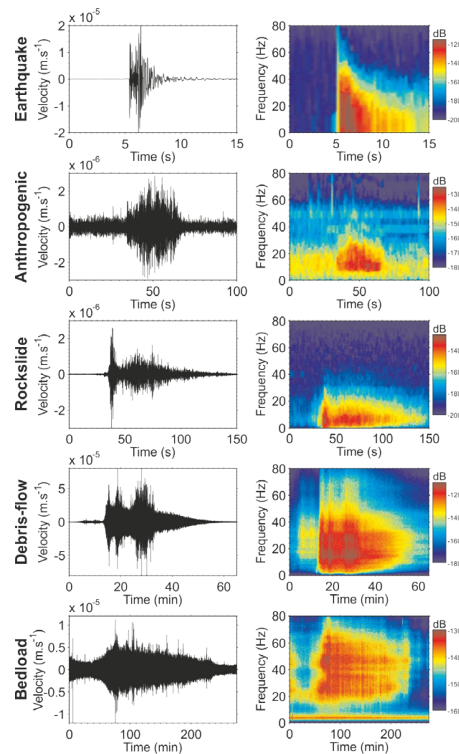


Figure 5. Characterisation of seismic signals (left) with a time-frequency analysis (right). Each vertical seismogram is high-pass filtered at 1 Hz and the seismic energy from spectrograms is in decibel. We performed the analysis for a local earthquake (Switzerland, day 144/2013 20:57:25 UTC), a public transport vehicle (GFZ Potsdam), a rockslide (Illgraben, day 1/2013), a debris-flow (Illgraben, day 203/2013) and bedload transport (Écrins, summer 2010), from top to bottom.

Title Page

Abstract

Introduction

Conclusions

References

Tables

Figures



Back

Close

Full Screen / Esc

Printer-friendly Version

Interactive Discussion



Seismic monitoring of geomorphic processes

A. Burtin et al.

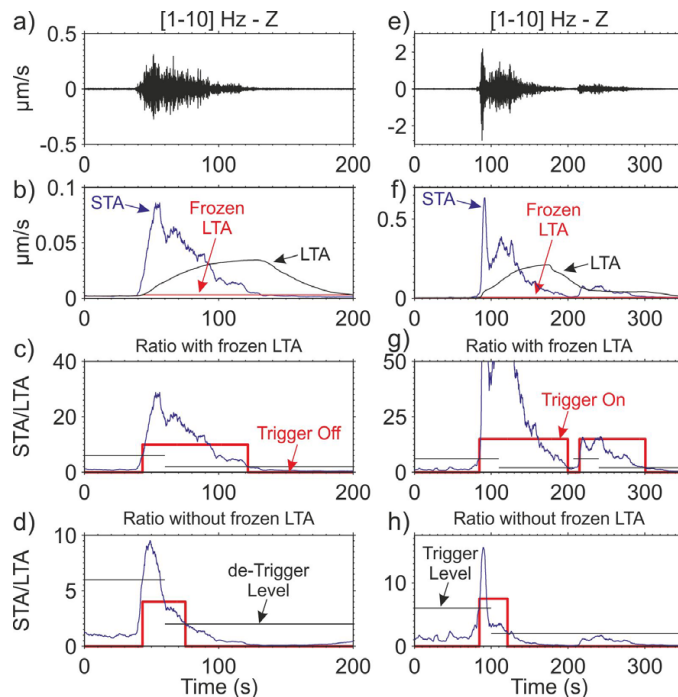


Figure 6. STA/LTA detection of a rockfall (left) and a rockslide (right). (**a** and **e**) [1–10] Hz band-pass filtered recording, (**b** and **f**) STA, LTA and frozen LTA for the processed event, (**c** and **g**) STA/LTA ratio with a frozen LTA, and (**d** and **h**) STA/LTA ratio with a continuously updated LTA. On the ratio figures, the horizontal black lines represent the trigger (upper-level) and de-trigger (lower level) threshold. The red box function illustrates the trigger state of the detection on/off (high/low).

Title Page

Abstract

Introduction

Conclusions

References

Tables

Figures

◀

▶

◀

▶

Back

Close

Full Screen / Esc

Printer-friendly Version

Interactive Discussion



Seismic monitoring of geomorphic processes

A. Burtin et al.

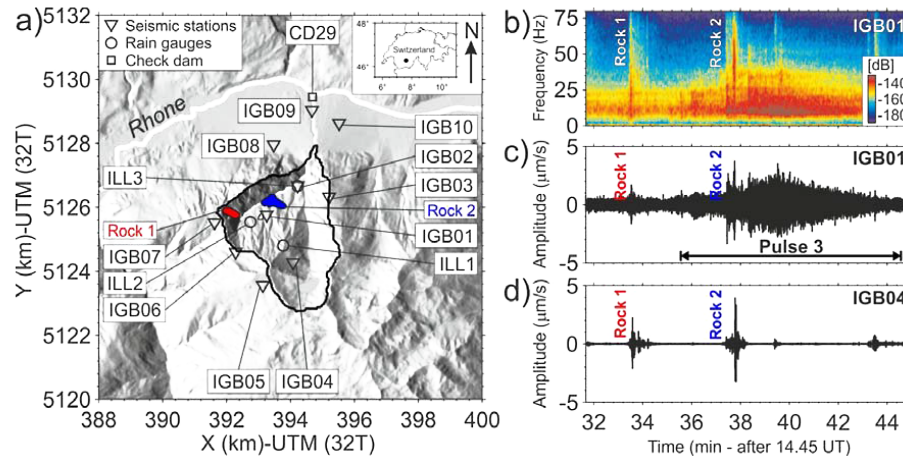


Figure 7. (a) The Illgraben catchment ($\sim 10 \text{ km}^2$, outlined in black) in Switzerland (dot in the inset map) and location of the seismological stations deployed during summer 2011 (inverse triangles, labels IGB##), meteorological stations from the Swiss Federal Institute for Forest, Snow and Landscape Research WSL (circles, labels ILL#), and Check Dam 29 (CD29, square) where the flow depth and bedload impact rates are measured. Rock 1 and 2 are the two rockfalls located and in relation with the debris-flow sequence. (b) Spectrogram in decibel of the vertical seismic signal at station IGB01 during the flow pulse 3. (c and d) Vertical [1–50] Hz bandpass filtered seismograms at stations IGB01 (c) and IGB04 (d). The signal of both rockfalls (Rock 1 and 2) are highlighted. After Burtin et al. (2014).

Title Page

Abstract

Introduction

Conclusions

References

Tables

Figures

◀

▶

◀

▶

Back

Close

Full Screen / Esc

Printer-friendly Version

Interactive Discussion



Seismic monitoring of geomorphic processes

A. Burtin et al.

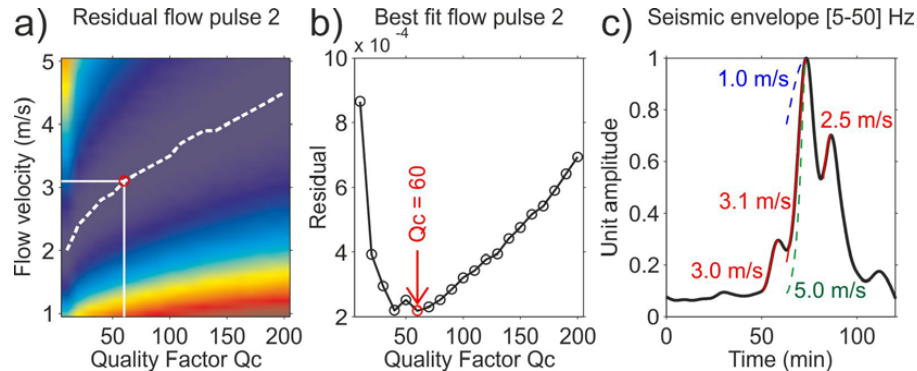


Figure 8. Flow pulse velocity measurement. **(a)** Residual for the velocity estimate of flow pulse 2 at IGB09 mapped in a quality factor (Q_c) – flow velocity domain. The most likely parameters that explain the recorded seismic signal is found by minimizing the residual (a Q_c – flow velocity couple). The white dash line represents the local minima for each tested Q_c . **(b)** Residual value for each Q_c highlighted along the white dash line in **(a)**. For flow pulse 2, the most likely Q_c is 60 and the flow velocity is 3.1 m s^{-1} . **(c)** Seismic envelope at [5–50] Hz (black) recorded at IGB09 during the debris-flow sequence. The seismic data is smoothed with a 5 min length window. In red and for each flow pulse, we show the best solution. To compare and for flow pulse 2, we show the pulse shape for a velocity of 1.0 m s^{-1} (blue dash line) and 5.0 m s^{-1} (green dash line).

Title Page

Abstract

Introduction

Conclusions

References

Tables

Figures

◀

▶

◀

▶

Back

Close

Full Screen / Esc

Printer-friendly Version

Interactive Discussion



Seismic monitoring of geomorphic processes

A. Burtin et al.

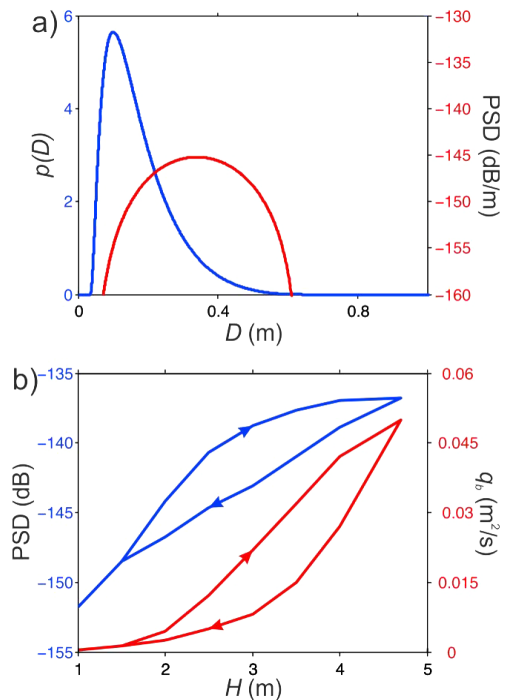


Figure 9. Sensitivity of PSD to grain size, and inversion of PSD data for Q_b from Tsai et al. (2012). **(a)** Grain size probability distribution (blue) and resulting PSD (red). **(b)** Prediction of Q_b (red) from fitting PSD data of Burtin et al. (2008) for station H0460 at [3–15] Hz (blue).