

Interactive comment on “Automated landform classification in a rockfall prone area, Gunung Kelir, Java” by G. Samodra et al.

G. Samodra et al.

guruh.samodra@gmail.com

Received and published: 10 April 2014

See attached PDF file for the response

Please also note the supplement to this comment:

<http://www.earth-surf-dynam-discuss.net/2/C57/2014/esurfd-2-C57-2014-supplement.pdf>

Interactive comment on Earth Surf. Dynam. Discuss., 2, 19, 2014.

C57

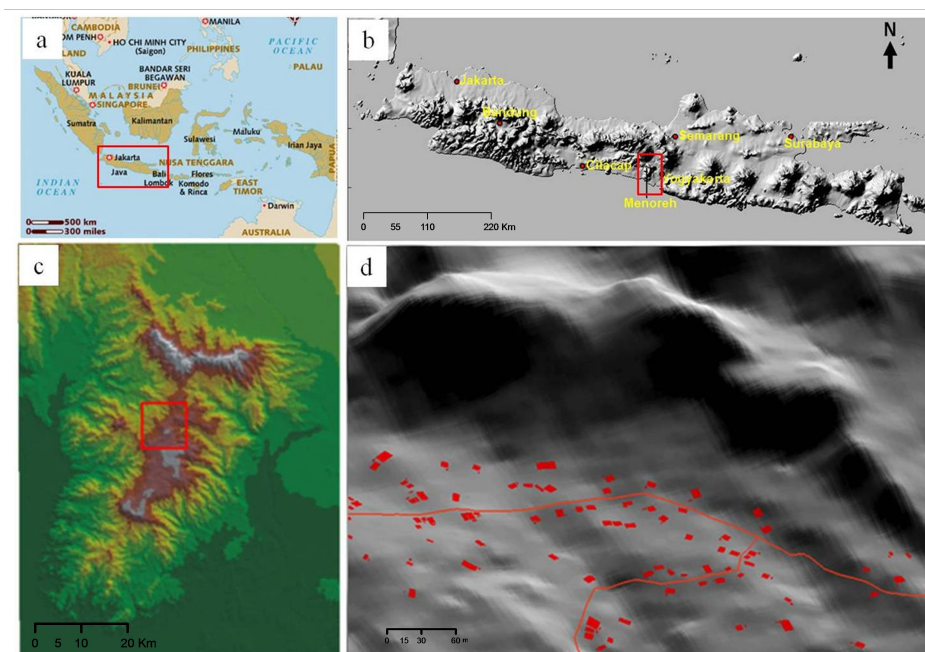


Fig. 1. Study area (a) geographical position of Java Island (b) DTM of Java Island (c) DTM of Kulon Progo Dome (d) Gunung Kelir Area viewed from east: red rectangle are elements at risk.

C58

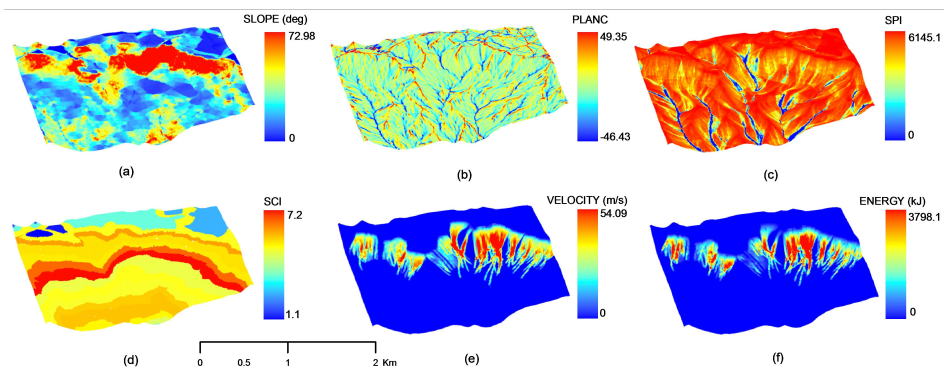


Fig. 2. Morphometric variables (a) slope, (b) plan curvature (c) stream power index (d) shape complexity index (e) rockfall velocity (f) rockfall energy

C59

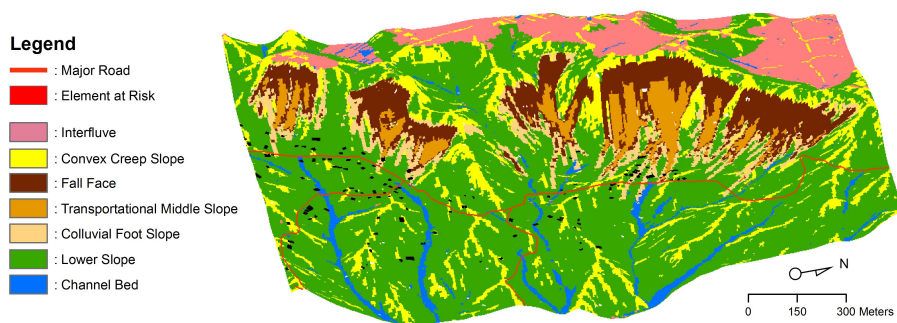


Fig. 3. Generic landforms in Gunung Kelir

C60

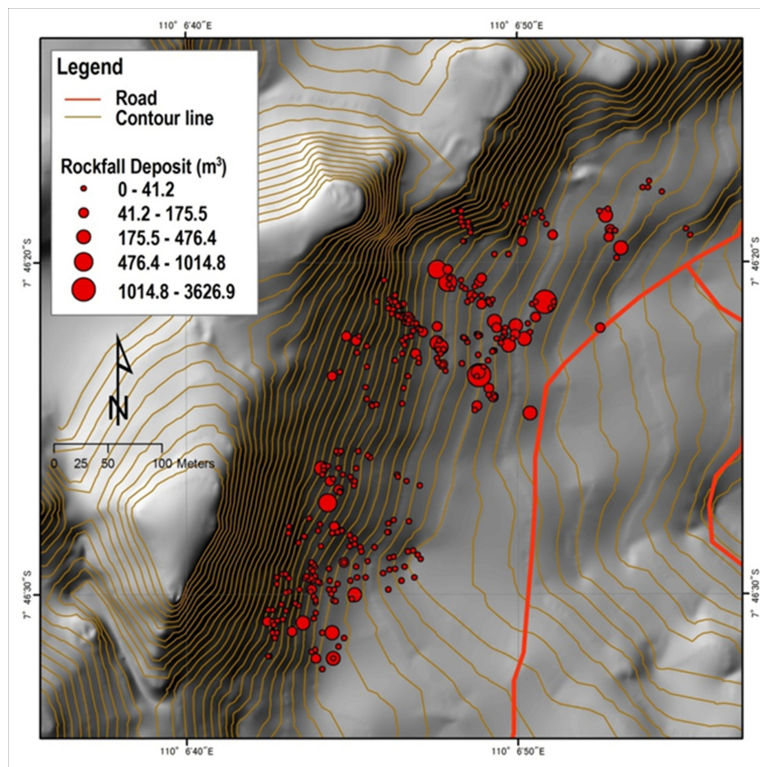


Fig. 4. Distribution of rockfall boulders in Gunung Kelir obtained from geomorphological survey

C61

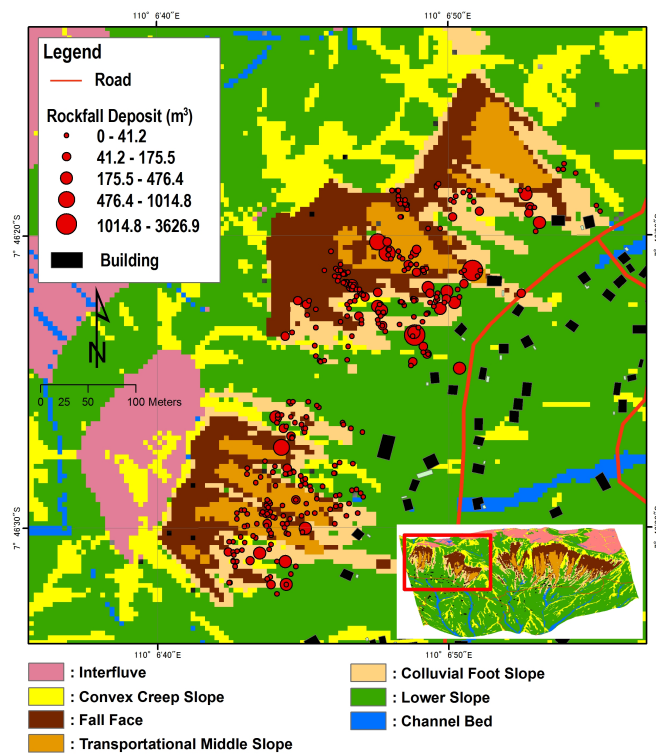


Fig. 5. Distribution of rockfall boulders associated with elements at risk and generic landforms

C62

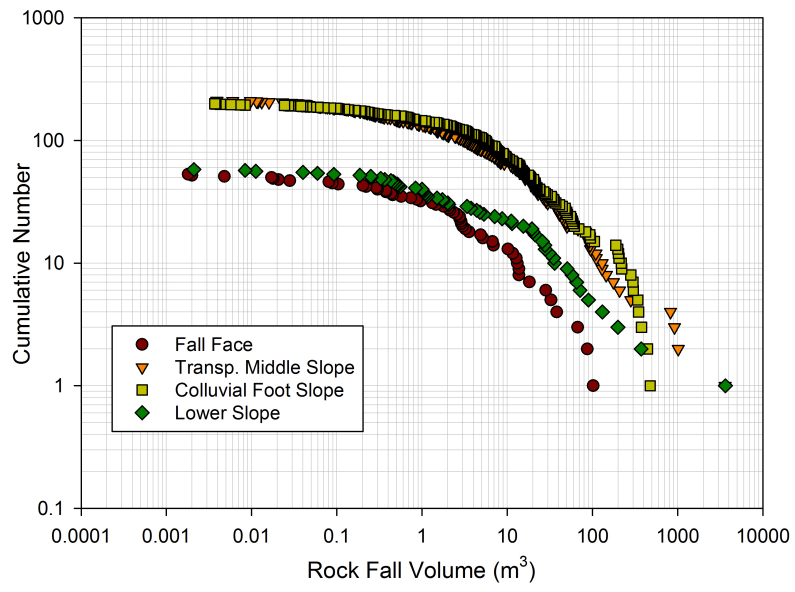


Fig. 6. Cumulative frequency curves of rockfall volume