

## ***Interactive comment on “Automated landform classification in a rockfall prone area, Gunung Kelir, Java” by G. Samodra et al.***

**G. Samodra et al.**

guruh.samodra@gmail.com

Received and published: 10 April 2014

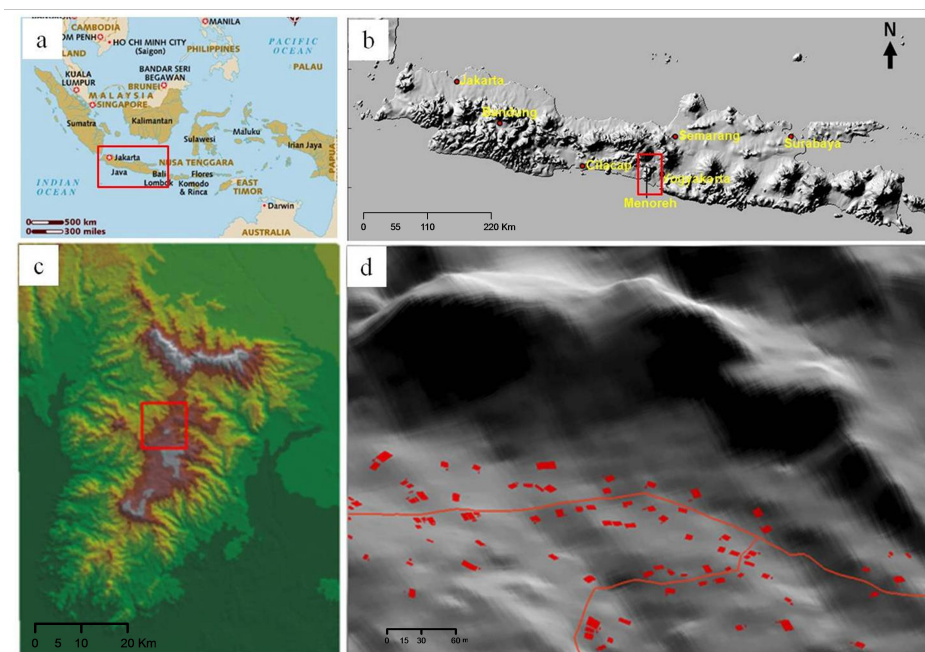
See attached PDF file for the response.

Please also note the supplement to this comment:

<http://www.earth-surf-dynam-discuss.net/2/C64/2014/esurfd-2-C64-2014-supplement.pdf>

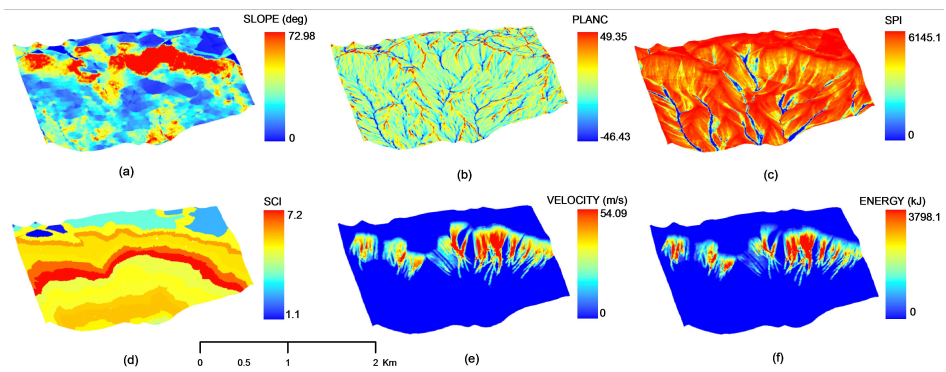
Interactive comment on Earth Surf. Dynam. Discuss., 2, 19, 2014.

C64



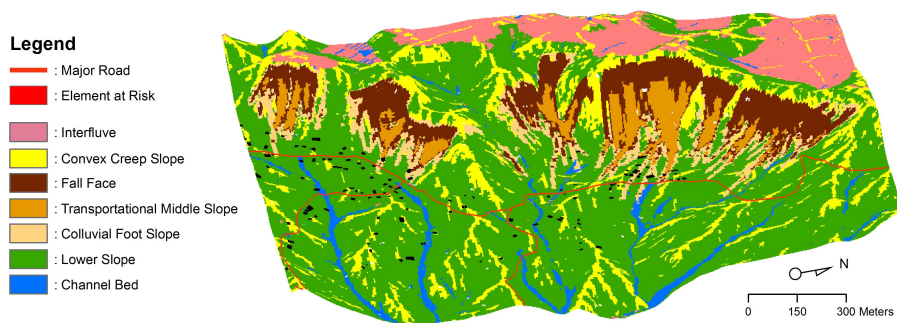
**Fig. 1.** Study area (a) geographical position of Java Island (b) DTM of Java Island (c) DTM of Kulon Progo Dome (d) Gunung Kelir Area viewed from east: red rectangle are elements at risk.

C65



**Fig. 2.** Morphometric variables (a) slope, (b) plan curvature (c) stream power index (d) shape complexity index (e) rockfall velocity (f) rockfall energy

C66



**Fig. 3.** Generic landforms in Gunung Kelir

C67

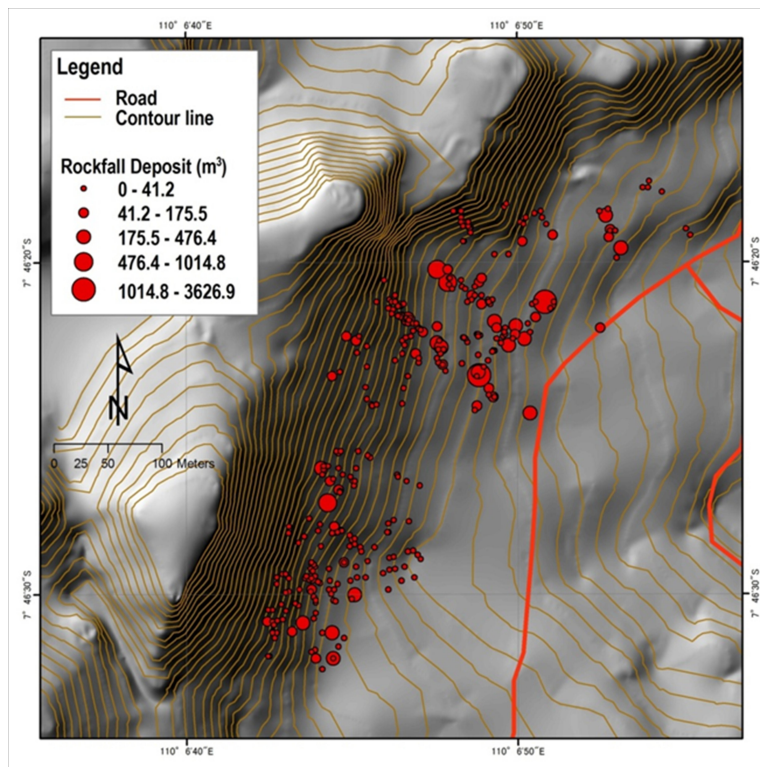


Fig. 4. Distribution of rockfall boulders in Gunung Kelir obtained from geomorphological survey

C68

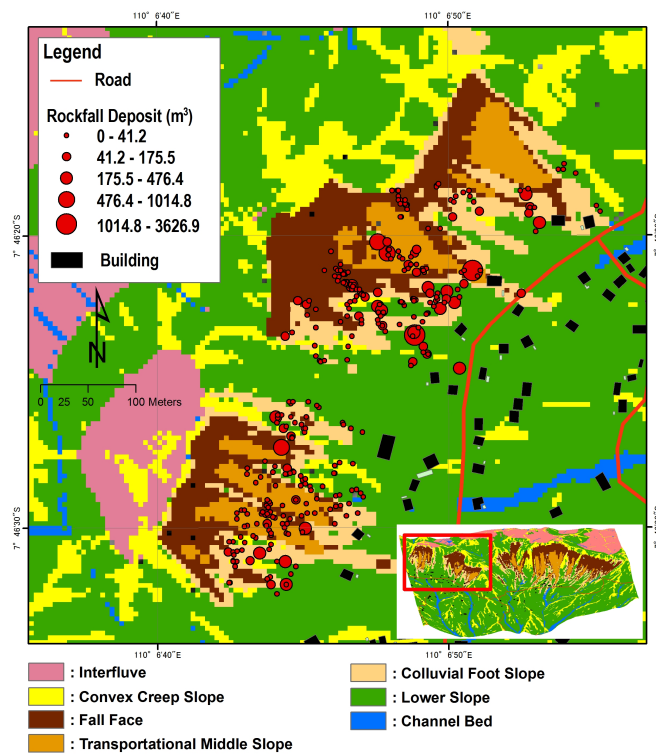
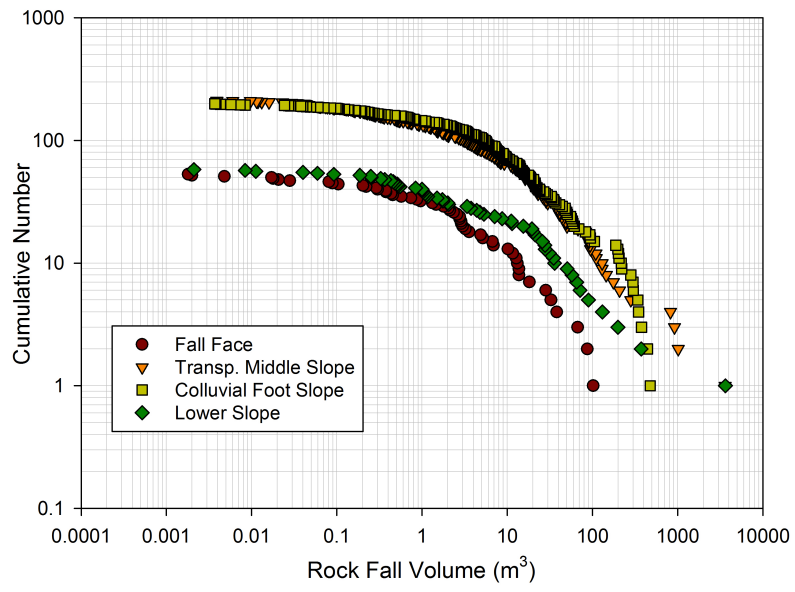


Fig. 5. Distribution of rockfall boulders associated with elements at risk and generic landforms

C69



**Fig. 6.** Cumulative frequency curves of rockfall volume