

**Topography-based
flow-directional
roughness: potential
and challenges**

S. Trevisani and
M. Cavalli

This discussion paper is/has been under review for the journal Earth Surface Dynamics (ESurfD).
Please refer to the corresponding final paper in ESurf if available.

Topography-based flow-directional roughness: potential and challenges

S. Trevisani¹ and M. Cavalli²

¹University IUAV of Venice, DACC Department, Dorsoduro 2206, 30123 Venezia, Italy

²National Council of Research of Italy, Research Institute for Geo-Hydrogeological Protection, Corso Stati Uniti 4, 35127 Padova, Italy

Received: 26 November 2015 – Accepted: 27 November 2015 – Published:
10 December 2015

Correspondence to: S. Trevisani (strevisani@iuav.it)

Published by Copernicus Publications on behalf of the European Geosciences Union.

Title Page

Abstract

Introduction

Conclusions

References

Tables

Figures

⏪

⏩

◀

▶

Back

Close

Full Screen / Esc

Printer-friendly Version

Interactive Discussion

Abstract

Surface texture analysis applied to High Resolution Digital Terrain Models (HRDTMs) is a promising approach for extracting useful fine-scale morphological information. Surface roughness, considered here as a synonym of surface texture, can have a discriminant role in the detection of different geomorphic processes and factors. Very often, the local morphology presents, at different scales, anisotropic characteristics that could be taken into account when calculating or measuring surface roughness. The high morphological detail of HRDTMs permits the description of different aspects of surface roughness, beyond an evaluation limited to isotropic measures of surface roughness. The generalization of the concept of roughness implies the need to refer to a family of specific roughness indices capable of capturing specific multi-scale and anisotropic aspects of surface morphology. An interesting set of roughness indices is represented by directional measures of roughness that can be meaningful in the context of analyzed and modeled flow processes. Accordingly, we test the application of a flow-oriented directional measure of roughness based on the geostatistical bivariate index MAD (median of absolute directional differences), which is computed considering surface gravity-driven flow direction. MAD is derived from a modification of a variogram and is specifically designed for the geomorphometric analysis of HRDTMs. The presented approach shows the potential impact of considering directionality in the calculation of roughness indices. The results demonstrate that the use of flow directional roughness can improve geomorphometric modeling (e.g., sediment connectivity and surface texture modeling) and the interpretation of landscape morphology.

1 Introduction

With advanced geomorphometric techniques applied to High Resolution Digital Terrain Models (HRDTMs), such as those derived via airborne LiDAR (ALS) (Hofle and Rutzinger, 2011), it is possible to retrieve relevant information on fine-scale morphol-

ESURFD

3, 1399–1444, 2015

Topography-based flow-directional roughness: potential and challenges

S. Trevisani and
M. Cavalli

Title Page

Abstract

Introduction

Conclusions

References

Tables

Figures

◀

▶

◀

▶

Back

Close

Full Screen / Esc

Printer-friendly Version

Interactive Discussion



Topography-based flow-directional roughness: potential and challenges

S. Trevisani and
M. Cavalli

Title Page

Abstract

Introduction

Conclusions

References

Tables

Figures

◀

▶

◀

▶

Back

Close

Full Screen / Esc

Printer-friendly Version

Interactive Discussion



ogy (Cavalli et al., 2013b; Cavalli and Marchi, 2008; Frankel and Dolan, 2007; Glenn et al., 2006; Lashermes et al., 2007; Trevisani et al., 2009, 2012 and 2015). HRDTMs can cover large areas with very high spatial resolution (pixel size less than or equal to 2 m) and vertical accuracy (standard deviation of the vertical error less than 0.3 m).

Ad hoc conducted ALS surveys for smaller areas (tens of km²), depending on ground cover conditions and survey characteristics, can considerably increase the resolution and accuracy of DTMs, permitting DTMs with a reliable pixel size of 0.5 m and a vertical accuracy (1 sigma) less than 0.1 m. On the extreme end, very high resolution DTMs can be obtained by means of terrestrial laser scanners or structure from motion photogrammetry (Westoby et al., 2012) methodologies. These products are frequently applied in the study of riverbed grain size distribution (e.g., Cavalli and Tarolli, 2011) or in geomchanics (e.g., Teza et al., 2015; Jaboyedoff et al., 2010). Most frequently, the HRDTMs derived by means of ALS are typically a 2.5-D representation of surface topography, digitally stored as a raster image. In this work, we are expressly referring to this typology of product; however, the same concepts, given proper data manipulation approaches (e.g., Pollyea and Fairley, 2011), can be applied to true 3-D representations of surface morphology. The HRDTMs are capable of capturing fine-scale morphologies that are relevant for the analysis and modeling of the processes and factors that influence the morphological evolution of landscapes. By means of geomorphometric methodologies (Pike, 2000), it is possible to extract information related to these fine-scale morphologies and obtain very useful indices from geomorphologic and geological points of view; moreover, fine-scale morphology related indices have an interesting potential from the perspective of land management, geo-engineering and geo-environmental issues (Booth et al., 2009; Glenn et al., 2006; Jaboyedoff et al., 2010; McGarigal et al., 2009; McKean and Roering, 2004; Teza et al., 2015).

The local fine-scale morphology represented in HRDTMs can be interpreted and analyzed in terms of surface/image texture (Herzfeld and Higginson, 1996; Lucieer and Stein, 2005; Trevisani et al., 2009). Surface/image texture analysis techniques have a long record of applications in remote sensing (e.g., Atkinson and Lewis, 2000; Bal-

Topography-based flow-directional roughness: potential and challenges

S. Trevisani and
M. Cavalli

Title Page

Abstract

Introduction

Conclusions

References

Tables

Figures

◀

▶

◀

▶

Back

Close

Full Screen / Esc

Printer-friendly Version

Interactive Discussion



aguer et al., 2010; Garriges et al., 2006; Herzfeld, 2008; Woodcock et al., 1988), image analysis and materials science (e.g., surface metrology, Gademawla et al., 2002). Local texture analysis conducted on HRDTMs can furnish relevant fine-scale morphological information (Trevisani et al., 2012), focused on specific aspects and scales of surface morphology.

Surface texture is linked to the concept of surface roughness, which, depending on the authors and disciplines involved (e.g., Cavalli et al., 2008; Grohmann et al., 2011; Smith, 2014; Trevisani et al., 2012; Trevisani and Rocca, 2015; Pollyea and Fairley, 2011), can be considered an aspect of surface texture, generally related to short-range/fine-grain spatial variability of surfaces or as a synonym of surface texture. In this work, we follow the second viewpoint, thus considering “roughness” as a synonym of “texture”. Consequently, given the multi-scale and anisotropic character of surface morphology, it is not possible to define a single geomorphometric index quantifying roughness; conversely, it is necessary to clearly state which aspect of surface roughness the used roughness index is intended for measuring. Real topographic surfaces often show a high complexity in local surface roughness with multi-scale and anisotropic characteristics. The anisotropy in surface morphology (Fig. 1) is an important aspect that can be characterized (Roy et al., 2015; Trevisani et al., 2009 and 2012; Trevisani and Rocca, 2015) and considered when calculating indices of roughness. Most of the roughness indices proposed in the literature (e.g., Berti et al., 2013; Grohmann et al., 2011) implicitly consider roughness as an isotropic parameter; an exception is represented by the roughness calculated from slope (Frankel and Dolan, 2007). The generalization of the concept of roughness opens the possibility of considering anisotropy in surface texture and calculating directional roughness indices (e.g., Trevisani et al., 2009 and 2012; Trevisani and Rocca, 2015).

The characterization of roughness anisotropy can be relevant both for geomorphologic interpretation and for the analysis and modeling of gravity-driven surface flow processes. For example, Trevisani et al. (2012) conducted a study in an Alpine basin associating elongated fine-scale morphologies in the direction of the slope gradient

Topography-based flow-directional roughness: potential and challenges

S. Trevisani and
M. Cavalli

Title Page

Abstract

Introduction

Conclusions

References

Tables

Figures

◀

▶

◀

▶

Back

Close

Full Screen / Esc

Printer-friendly Version

Interactive Discussion



with erosional channels and mud/debris flow deposits; then, they associated elongated fine-scale morphologies following the contour lines with landslide crown scarps, terraces, outcropping strata, etc. In the context of flow processes, the anisotropy in surface roughness influences the impedance to flow. In the presence of an anisotropic surface texture, the resistance to flow changes according to the angle between the gradient and the direction of maximum continuity (i.e., the direction of lower roughness). The minimum resistance to flow is encountered when the gradient (Fig. 1c) is in the same direction as the maximum continuity and the maximum resistance is found when the gradient (Fig. 1d) is in the direction of maximum roughness. Moreover, when the flow gradient is at an angle with respect to the surface texture maximum continuity direction, the real flow lines can be deflected with respect to the gradient direction (Fig. 1e); this is an important aspect that deserves consideration in upscaling procedures, where the impedance to surface flow can be considered a tensor property, analogous to hydraulic conductivity (Fetter, 2000).

Given these considerations, the aim of this work is to evaluate the effectiveness and further developments of short-range flow-directional roughness indices in a hydrogeomorphological context and their potential application to complex indices and models. To this end, in the first stage (case study “Site 1”), we investigate the differences between flow-directional and isotropic roughness in terms of their statistical and spatial distribution, also in relation to morphologies and processes characterizing the study site. Finally (case study “Site 2”), we explore the use of flow-directional roughness as an impedance factor in a sediment connectivity index, that directly uses its formulation surface roughness as a proxy of the impedance to water and sediment fluxes (Cavalli et al., 2013a).

For the evaluation of flow-directional roughness, we use a robust bivariate geostatistical index (MAD, Trevisani and Rocca, 2015) specifically designed for the analysis of high-resolution DTMs. We limit the study to short-range directional roughness, avoiding multiple scale evaluations, to reduce the number of influencing factors. The study of

multi-scale directional roughness represents a possible second stage of research that is worth exploring.

2 Materials and methods

2.1 MAD and computation of flow-directional roughness

In this work, we focus on the determination of short-range surface roughness using a geostatistical-based bivariate spatial continuity index. Spatial continuity indices such as the Variogram (Cressie, 1993) have been widely applied in the context of remote-sensing and geomorphometry because they allow the description of different aspects of surface/image texture by means of multi-scale and directional indices.

For the derivation of short-range roughness, we use the MAD index (Median Absolute Differences, Trevisani and Rocca, 2015), Eq. (1), by means of an ad hoc developed GIS tool, specifically designed for the analysis of HR-DTMs. MAD, similarly to the well-known variogram (Eq. 2), is calculated considering the differences between spatial pairs of values, which in this context include residual elevations ($Z(\mathbf{u}_\alpha)$) (with the vector \mathbf{u} indicating the coordinates) separated by a given separation vector, the lag \mathbf{h} (Fig. 2). For a given local search neighborhood and a given lag \mathbf{h} , the set of $N(\mathbf{h})$ pairs of residual elevations separated by lag \mathbf{h} is used to calculate the bivariate indices (Eqs. 1 and 2).

$$\text{MAD}(\mathbf{h}) = \text{Median}(|\Delta(\mathbf{h})|) = \begin{cases} |\Delta(\mathbf{h})_{\alpha=(N(\mathbf{h})+1)/2}| & \text{with } N(\mathbf{h}) \text{ odd} \\ 1/2(|\Delta(\mathbf{h})_{\alpha=N(\mathbf{h})/2}| + |\Delta(\mathbf{h})_{\alpha=N(\mathbf{h})/2+1}|) & \text{with } N(\mathbf{h}) \text{ even} \end{cases} \quad (1)$$

where $|\Delta(\mathbf{h})_\alpha| = |z(\mathbf{u}_\alpha) - z(\mathbf{u}_\alpha + \mathbf{h})|$, with the values $|\Delta(\mathbf{h})_\alpha|$, $\alpha = 1, \dots, N(\mathbf{h})$ sorted into ascending order and $|\Delta(\mathbf{h})|$ the set of the $N(\mathbf{h})$ absolute differences with a separation

Topography-based flow-directional roughness: potential and challenges

S. Trevisani and
M. Cavalli

Title Page

Abstract

Introduction

Conclusions

References

Tables

Figures

◀

▶

◀

▶

Back

Close

Full Screen / Esc

Printer-friendly Version

Interactive Discussion



vector \mathbf{h} , i.e., $\{|\Delta(\mathbf{h})_\alpha| \alpha = 1, \dots, N(\mathbf{h})\}$.

$$\text{Variogram} = \gamma(\mathbf{h}) = \frac{1}{2N(\mathbf{h})} \sum_{\alpha=1}^{N(\mathbf{h})} [z(\mathbf{u}_\alpha) - z(\mathbf{u}_\alpha + \mathbf{h})]^2 = 1/2 \cdot \text{Mean}(\Delta(\mathbf{h})^2) \quad (2)$$

with

$$\Delta(\mathbf{h})_\alpha = z(\mathbf{u}_\alpha) - z(\mathbf{u}_\alpha + \mathbf{h})$$

5 and $\Delta(\mathbf{h})^2$ the set of $N(\mathbf{h})$ squared differences with a separation vector \mathbf{h} , i.e.,

$$\{[\Delta(\mathbf{h})_\alpha]^2 | \alpha = 1, \dots, N(\mathbf{h})\}.$$

MAD(\mathbf{h}) is the median of the set absolute differences in residual elevation; in contrast, the variogram is half of the mean of the set of squared differences. The formulation of MAD permits a more robust description of spatial variability than the variogram (Chilès and Delfiner, 2012), which is particularly useful with noisy and highly spatially non-stationary data (Trevisani and Rocca, 2015). MAD (Eq. 1) similarly to the variogram (Eq. 2), as a function of the separation vector (lag \mathbf{h}), is a 2-D function that is dependent on the modulus and the direction of \mathbf{h} , which can be represented in the same way as a variogram map (Trevisani et al., 2009).

15 MAD and the variogram should be calculated from a residual DTM, obtained by removing large-scale variations from the DTM (Cavalli and Marchi, 2008; Frankel and Dolan, 2007; Grohmann et al., 2011; Hiller and Smith, 2008). This is commonly performed by smoothing the original DTM and subtracting the smoothed version from the original DTM. The method of smoothing and, above all, the degree of smoothing affects the wavelengths and amplitude of the morphologies remaining in the residual DTM. Consequently, the derivation of the residual DTM is a critical task that should be calibrated to the object of the study and to the features required for outlining. In this work, we are interested in short-range roughness, and the derivation of the residual

**Topography-based
flow-directional
roughness: potential
and challenges**

S. Trevisani and
M. Cavalli

Title Page

Abstract

Introduction

Conclusions

References

Tables

Figures

◀

▶

◀

▶

Back

Close

Full Screen / Esc

Printer-friendly Version

Interactive Discussion



DTM has been addressed by using a simple approach based on multi-pass moving averages using small search windows (e.g., 5×5) (Trevisani et al., 2010).

To simplify the analysis and focus on anisotropy, we limit the study to short-range roughness computed using a local window (circular, radius 3 pixels, Trevisani and Rocca, 2015) with a lag modulus of two pixels (Fig. 2). We derive isotropic measures of short-range roughness (R_{iso}) by considering pairs of values of residual elevation separated by 2 pixels in any direction (Fig. 2a); in addition, we derive flow-directional measures of short-range roughness (R_{flow}) by considering pairs of values of residual elevation separated by two pixels in the flow direction (Fig. 2b).

The flow direction can be computed from the DTM or, to obtain less erratic flow directions, from the smoothed DTM with a D8 algorithm. The methodology can be extended using directions determined with other approaches, e.g., from physically based numerical models. Moreover, the preferential directions used for roughness calculations can be representative of processes other than gravity-driven surface flow: e.g., wild-fire spread direction, wind direction, ecological pathways, etc. In this work, the main steps followed for flow-directional calculation are (i) computation of flow directions by means of the D8 algorithm applied to the original or smoothed DTM, (ii) computation of directional differences using the local flow directions and considering a lag of two pixels (4 m case Study 1, 2 m case Study 2) from the residual DTM, (iii) computation of local measures of flow-directional roughness (R_{flow}) by means of the MAD index, using a circular search window with a radius of 3 pixels (a total of 29 pairs are used for the calculation of MAD, see Trevisani, 2015).

2.2 The sediment connectivity index

The adimensional index of sediment connectivity (IC), originally developed by Borselli et al. (2008), is a distributed GIS-based index mainly focused on the influence of topography on sediment connectivity. The connectivity aims to represent the linkage between different parts of the catchment (i.e., hillslopes and features of interest such as catchment outlets, main channel networks or a given cross section along the channel). IC

Topography-based flow-directional roughness: potential and challenges

S. Trevisani and
M. Cavalli

Title Page

Abstract

Introduction

Conclusions

References

Tables

Figures

◀

▶

◀

▶

Back

Close

Full Screen / Esc

Printer-friendly Version

Interactive Discussion



Topography-based flow-directional roughness: potential and challenges

S. Trevisani and
M. Cavalli

Title Page

Abstract

Introduction

Conclusions

References

Tables

Figures

◀

▶

◀

▶

Back

Close

Full Screen / Esc

Printer-friendly Version

Interactive Discussion



(Fig. 3) is defined by the logarithm of the ratio between an upslope (D_{up} , units in m) and a downslope (D_{dn} , units in m) component expressing, respectively, the potential for downward routing of the sediment-produced upslope and the sediment flux path length to the nearest target or sink. A weighting factor (W) appears in both components of the IC to model the impedance to runoff and sediment fluxes. Cavalli et al. (2013a) proposed some changes to the original index to adapt it to mountain catchments and its use with HRDTMs, with one of the main modifications in regards to the choice of the weighting factor. Borselli et al. (2008) used the C-factor of the USLE-RUSLE models, which is related to vegetation cover and management; meanwhile, Cavalli et al. (2013a) decided to adopt a local measure of topographic surface roughness calculated as the standard deviation of the residual topography at a scale of a few meters. The residual topography was computed as the difference between the original DTM and an averaged version of the DTM. A roughness-based weighting factor was chosen because in mountain catchments, a large variety of surface roughness exists, depending on the characteristics of outcropping rocks and debris cover, especially in large unvegetated areas where a land-use based W does not provide differences in the impedance to sediment transport (Cavalli et al., 2013a).

The index of connectivity in its original formulation is expressed as the logarithm of the ratio (i.e., $IC = \log_{10} (D_{up}/D_{dn})$). The use of the logarithm in the index of connectivity has the advantage of reducing the high positive skewness that generally characterizes the statistical distribution of the ratios between D_{up} and D_{dn} ; the distorted distribution is a structural characteristic in mountain environments, given that the D_{up} component inevitably has the tendency to decrease exponentially with increasing D_{dn} . From an interpretative and modeling viewpoint, we can represent the connectivity index by directly using the ratio between D_{up} and D_{dn} , with values trimmed to a maximum value of 1. The revised representation of the connectivity index, named here DC (degree of

connectivity), is then expressed as follows:

$$\begin{cases} DC = \frac{D_{up}}{D_{dn}} & \text{with } \frac{D_{up}}{D_{dn}} \leq 1 \\ DC = 1 & \text{with } \frac{D_{up}}{D_{dn}} > 1 \end{cases} \quad (3)$$

with $0 \leq DC \leq 1$.

This revised representation of the index does not alter the whole processes of calculation of the index of connectivity; however, it permits a description of connectivity in terms of probability and implies a different interpretation of the upslope and downslope components than the one proposed by Borselli et al. (2008). Because D_{up} is based on a stream power relationship, it can be interpreted as the potential distance that a unit of sediment located in a point of interest would run on a perfectly smooth surface with slope 1 (given a hydraulically significant idealized meteoric impulse). Additionally, D_{dn} represents the effective weighted distance, considering the effective slope and roughness that the unit of sediment has to travel from the point of interest to the defined sink. Consequently, when the ratio D_{up}/D_{dn} is equal to or above 1, the potential travelled distance is higher than the effective distance, and the sediment unit is totally connected, or, in probabilistic terms, has a probability of 1 to arrive at the target given a significant flow impulse. Alternatively, the values below 1 indicate that the potential distance is lower than the effective distance.

In the original formulation of the connectivity index, the mapping of the weighting factor from roughness values is derived via a linear transformation (Fig. 4) after normalizing the roughness according to Eq. (4):

$$W = 1 - \frac{R}{R_{max}} \quad (4)$$

where R is the local roughness, which is computed as the standard deviation of the residual DTM calculated with a moving window of 5×5 pixels.

In the presence of highly positively distorted distributions of roughness (Fig. 4b) typical of mountain environments, mapping by means of Eq. (4) generates values of the

**Topography-based
flow-directional
roughness: potential
and challenges**

S. Trevisani and
M. Cavalli

Title Page

Abstract

Introduction

Conclusions

References

Tables

Figures

◀

▶

◀

▶

Back

Close

Full Screen / Esc

Printer-friendly Version

Interactive Discussion



Topography-based flow-directional roughness: potential and challenges

S. Trevisani and
M. Cavalli

Title Page

Abstract

Introduction

Conclusions

References

Tables

Figures

◀

▶

◀

▶

Back

Close

Full Screen / Esc

Printer-friendly Version

Interactive Discussion



weighting factor characterized by a very small range of variation, with values packed toward a weighting factor of 1. This procedure for deriving W has two-fold side effects: (i) it reduces the impact of the spatial variability of surface roughness on IC, and (ii) it reduces the impact of differences between alternative indices of roughness (e.g., R_{flow} vs. R_{iso}). A mathematical solution is to normalize the natural logarithm of roughness (Fig. 4c) according to Eq. (5):

$$W = 1 - \frac{\text{Ln}(R) - \text{Ln}(R_{\text{min}})}{\text{Ln}(R_{\text{max}}) - \text{Ln}(R_{\text{min}})} \quad (5)$$

where R_{max} and R_{min} are the maximum and minimum (trimmed to 0.001) roughness among the compared indices.

With this proposed transformation, the weighting factor shows a wider range of variation, reducing the effect of compression of variability.

2.3 The datasets

In this work, two different study sites located in an alpine setting in the Italian Alps and related LiDAR derived HR-DTMs have been used (Fig. 5). The first study site (Site 1), covering an area of 575 km², was selected for performing a comparative analysis between R_{flow} and R_{iso} , and for analyzing the differences of site specific geo-structural settings, morphologies and ground cover. The second study site (Site 2), covering a smaller area of 15 km², was selected for studying the potential use of R_{flow} in the context of the sediment connectivity index proposed by (Cavalli et al., 2012).

The study site is located in the Trentino Province (north Italy) and covers 575 km² of complex and heterogeneous alpine morphology, with elevations ranging from 206 to 3152 m a.s.l. (Fig. 6). The study area is characterized by variable ground cover typologies, different levels of anthropic influence and a complex geo-structural setting (Castellarin et al., 2005). For this area, an HR-DTM derived via an airborne laser scanner (ALS) is available under a creative commons 2.5 license provided by the Trento Province. This HR-DTM is part of an airborne Lidar survey covering the whole Trentino

**Topography-based
flow-directional
roughness: potential
and challenges**

S. Trevisani and
M. Cavalli

Title Page

Abstract

Introduction

Conclusions

References

Tables

Figures

◀

▶

◀

▶

Back

Close

Full Screen / Esc

Printer-friendly Version

Interactive Discussion



Province (more than 6500 km²) conducted between 2006 and 2007 (Cavalli et al., 2013a, b). In areas of low elevation and those bordering urbanized environments, the HR-DTM is available with a pixel size of 1 m and a reported vertical accuracy of 0.15 m (1 sigma); for areas of high altitude and with steep slopes, the HR-DTM is available with a resolution of 2 m, and a reported accuracy of 0.3 m. To derive an HRDTM with a homogeneous pixel size, we resampled the 1 m DTM to 2 m, averaging four neighboring pixels (corresponding to, in the case of uncorrelated Gaussian error, an accuracy of 0.075 m).

The reported vertical accuracy of the LiDAR of the two different typologies of area has to be considered merely indicative. First, the dependency of LiDAR accuracy to slope and ground cover typology suggests that these values can overestimate or underestimate the true accuracy in relation to local conditions. Another point that deserves to be mentioned is that the vertical accuracy reported does not discriminate between different typology of errors, i.e., whether these are spatially correlated. The presence of a spatially correlated error (e.g., Sofia et al., 2013) has a different impact on measures of surface roughness with respect to an uncorrelated error. In the case of a spatially correlated error, the impact on roughness indices is related to the total amplitude of the error, its correlation length and the lag distance used for the bivariate roughness calculation. The worst scenario is encountered when the correlation length of the error is similar to the lag distance used for roughness calculations. Unfortunately, we do not know the correlation lengths of the error, as they are likely spatially variable; however, at least when these have small wavelengths and relevant amplitudes, these are clearly visible in the DTM, e.g., striping artefacts. It should also be considered that in the evaluation of local surface roughness, the interest is focused on the correct reproduction of surface variability more than in the exact vertical and positional accuracy of the single pixels and/or single LiDAR points. Consequently, the results of roughness calculations and the comparative analysis between the two roughness indices have to be analyzed critically, taking into consideration the local settings, such as the slope, ground cover typology and presence of evident artifacts on the LiDAR DTM. Moreover, the analy-

sis of orthophotos (pixel size 0.5 m), specifically collected during the LiDAR survey, and, whenever necessary, site-specific field surveys can help confirm the results of the calculated roughness indices.

The second study site (Fig. 7) is constituted by two nearby catchments (Gadria and Strimm) covering a total area of approximately 15 km². The study site is located in the upper Vinschgau–Venosta valley (Autonomous Province of Bozen–Bolzano, Italy) and has been specifically selected because both catchments have been intensely studied from the perspective of sediment dynamics (Comiti et al., 2014; Dell’Agnese et al., 2015) as well as because the sediment connectivity index that we test with flow directional roughness has been developed in this same area (Cavalli et al., 2013a). This study showed that because of their contrasting morphology, the catchments are characterized by different patterns of sediment connectivity, showing a higher efficiency of sediment routing in the Gadria catchment. The Gadria catchment, a typical debris-flow catchment, ranges in elevation from 1394 to 2945 m a.s.l., with an average slope of 79.1 %. The Strimm catchment, featuring mainly bedload transport, ranges in elevation from 1394 to 3197 m a.s.l., with an average slope of 61.8 %. Another reason that led to the choice of this study site is that, following the work of Cavalli et al. (2013a) in which a 2.5 m DTM was used, a LiDAR survey was conducted in July 2011, resulting in a filtered point density of 2.28 points m² in the area, allowing us to derive a 1 m HRDTM with a calculated vertical accuracy (RMSE) of 0.16 m. More details on the study area can be found in Comiti et al. (2014).

3 Results and discussion

3.1 Comparison between flow directional-roughness and isotropic roughness

Study Site 1 has been selected for exploring the use of flow-directional roughness for geomorphometric applications. The main target is to evaluate if the proposed index (R_{flow}) furnishes meaningful and distinctive results in comparison to R_{iso} . From this

Topography-based flow-directional roughness: potential and challenges

S. Trevisani and
M. Cavalli

Title Page

Abstract

Introduction

Conclusions

References

Tables

Figures

◀

▶

◀

▶

Back

Close

Full Screen / Esc

Printer-friendly Version

Interactive Discussion



perspective, it is worth evaluating with which morphological features, natural and/or anthropic, the main differences between R_{flow} and R_{iso} are associated. A second target is to highlight weaknesses and potential of the proposed algorithm that require further refinement and development.

For the calculation of R_{flow} and of R_{iso} , we derived a residual DTM, subtracting a smoothed DTM from the original, which has been smoothed via a two pass moving window approach (square window), in which the first pass had a window size of 3 pixels and the second pass had a window size of 5 pixels. The residual DTM highlights (Fig. 8) fine-scale morphologies and represents the input data from which the roughness indices are derived. It is interesting to note (Table 1) that approximately 80 % of the residual elevations are between -0.42 and $+0.43$ m, a quite narrow range of variation. The area with higher absolute values of residual topography are located in areas with rocky outcrops and steep slopes, stream channels, terrace scarps and other morphological features inducing sharp changes in morphology.

R_{flow} and R_{iso} , given their strong linear correlation, show almost identical spatial patterns (accordingly, we show only one index: Fig. 9) and the statistical distributions of the values are also very similar (see Table 2). Similar to the residual elevations, most of the values of R_{flow} and R_{iso} are characterized by a limited range of variation, with a median value of approximately 0.15 m; only 10 % of the values show a short-range roughness (isotropic or flow-directional) of more than 0.6 m.

To compare R_{flow} and R_{iso} , we analyzed the differences and the relative differences between the two indices (Table 3). In terms of absolute values, the differences between the two indices are small, as expected given the values of the roughness indices (Table 2). Only 40 % of the values have an absolute difference in roughness of more than 0.04 m. Considering the variable accuracy of the DTM, with higher accuracy only in low lying urbanized areas, the absolute differences on the order of 0.02 m or less, have to be evaluated critically, even if these are associated with areas of low slope and with the highest accuracy. The relative differences effectively indicate that the two indices are quite different, with more than 40 % of the values showing a relative absolute difference

Topography-based flow-directional roughness: potential and challenges

S. Trevisani and
M. Cavalli

Title Page

Abstract

Introduction

Conclusions

References

Tables

Figures

◀

▶

◀

▶

Back

Close

Full Screen / Esc

Printer-friendly Version

Interactive Discussion



of more than 20 %. It is also interesting to note that with the exception of the minimum and maximum values, the differences show a slightly positively distorted distribution.

With regard to the analysis of the spatial patterns (Fig. 10) of the differences and of the relative differences between the indices, it is interesting to analyze how these relate with morphological features. In areas of high altitude with no or limited anthropic influence (on morphology), the main differences between the two indices are clearly associated, as expected, with specific morphological features (Fig. 11). Zones with higher R_{flow} than R_{iso} are associated with fine-scale morphological features with an elongated shape almost orthogonal to the slope gradient, creating steps/scarps along the slope (Fig. 11). In the study area under analysis, the main morphologies exemplifying this behavior are (i) steps related to outcropping geological strata, (ii) fault and fracture lines at an angle with respect to the flow direction, (iii) landslides scarps, (iv) fluvial terrace scarps; (v) glacial features (e.g., small frontal moraines). Zones in which R_{flow} is less than R_{iso} are associated with fine-scale morphological features with an elongated shape in the steepest descent direction, e.g., channels in rocky outcrops and scree slopes; morphological features associated with erosional processes; debris/mud flow deposits; structural lineaments elongated in the gradient direction.

The comparative analysis of the indices in areas with strong anthropic influence (Fig. 12) on the morphology highlights the impact of human activity on the landscape. In these areas, many anthropic morphological features show higher R_{flow} than R_{iso} : road and trail networks; terraces associated with agriculture or excavation activities; and urban areas. Anthropic morphological features leading to lower R_{flow} than R_{iso} are less common; channels directed along slope gradients and ski slopes are examples of this type of behavior.

Peculiarity is encountered in areas associated with agriculture (Fig. 13); these areas are characterized as extended zones with lower R_{flow} than R_{iso} , with very small absolute differences (less than 0.01 m) and considerable relative differences (more than 30 %). Considering the accuracy of the DTM, these small differences could be considered not significant; however, comparing the shaded relief and the residual DTM with

Topography-based flow-directional roughness: potential and challenges

S. Trevisani and
M. Cavalli

Title Page

Abstract

Introduction

Conclusions

References

Tables

Figures

◀

▶

◀

▶

Back

Close

Full Screen / Esc

Printer-friendly Version

Interactive Discussion



Topography-based flow-directional roughness: potential and challenges

S. Trevisani and
M. Cavalli

Title Page

Abstract

Introduction

Conclusions

References

Tables

Figures

◀

▶

◀

▶

Back

Close

Full Screen / Esc

Printer-friendly Version

Interactive Discussion



the orthophotos, it is evident that these areas display interesting morphological features related to the orientation of rows of orchards, e.g., for grapes or other agricultural crops. Consequently, from the side of bare-earth morphological analysis, these areas can be considered as artefacts of the HRDTM related to anthropic features and, in some circumstances, to sub-optimal filtering of the LiDAR points. However, from the perspective of soil science and the study of surface flow processes, this information could be valuable and provide a more correct evaluation of roughness to be used as an impedance factor.

These results are encouraging, suggesting that the use of R_{flow} permits the extraction of useful information from HR-DTMs. For example, in the context of geomorphologic interpretation, the maps of differences and relative differences between R_{flow} and R_{iso} represent useful geomorphometric indicators. In particular, these indicators are capable of discriminating between anisotropic surface textures elongated and orthogonal to the direction of the slope gradient; moreover, the spatial patterns of areas of positive and negative differences furnish interesting information on the spatial organization of the morphology, useful from the interpretative perspective as well as in the context of geodiversity considerations (Benito-Calvo et al., 2009; McGarigal et al., 2009; Melelli, 2014;). Moreover, the areas with lower R_{flow} than R_{iso} often include areas of preferential flow; alternatively, areas with higher R_{flow} than R_{iso} exhibit features that act as an obstacle to flow. This type of segmentation of the morphological landscape can be quite useful from the perspective of water/sediment dynamics. Consequently, the differences between the two roughness indices becomes an index itself that can act as a new feature to be used in machine-learning approaches for automatic mapping (Bue and Stepinski, 2006; Cracknell and Reading, 2014; Macmillan et al., 2003) or for other predictive models, such as landslide susceptibility models (Booth et al., 2009; Jaboyedoff et al., 2010).

From the perspective of gravity-driven surface flow processes, the differences between R_{flow} and R_{iso} , with the extensive presence of areas with lower R_{flow} than R_{iso} , corroborate the hypothesis that this type of index can be a good candidate as an

impedance factor in models and indices related to surface flow processes. The results of the proposed algorithm are reasonable and in accordance with the represented morphology. However, the small values characterizing the indices of roughness coupled with the difficult accuracy assessment that frequently characterize ALS HR-DTMs suggest a careful analysis of the results. Moreover, the derivation of the residual DTM is crucial because it influences the subsequent steps of the roughness calculation. In fact, the small roughness values are partially related to the small absolute values of the residual DTM and consequently also partially to the procedure of residual DTM derivation.

3.2 Application to the sediment connectivity index

In the next step of the analysis, we tested the impact of using R_{flow} as an impedance factor in the topographical-based sediment connectivity index proposed by Cavalli et al. (2013a). In fact, one of the aims of the proposed index is to furnish an improved index of DTM-based roughness useful in the context of surface flow processes. To evaluate the impact of R_{flow} on the connectivity index, we performed two runs of SedInConnect (Crema et al., 2015), a stand-alone tool developed to calculate the sediment connectivity index, using two different weighting factors (W_{flow} and W_{iso}), one derived from R_{flow} and one from R_{iso} according to Eq. (5). Subsequently, we derived two measures of the DC that we respectively name DC_{flow} , the degree of connectivity derived using the weighting from R_{flow} , and DC_{iso} , the degree of connectivity derived using R_{iso} . The DC indices (Fig. 14) were derived considering the main channels of the Gatria and Strimm as targets, in accordance with the work by Cavalli et al. (2013a).

The residual DTM for roughness calculations has been derived with a single pass moving average, using a 5×5 pixel window. The values of R_{flow} and R_{iso} show a similar statistical structure (Table 4) and spatial patterns. As at the previous study site, the areas in which R_{flow} is lower than R_{iso} are associated with channels, erosional processes and debris flow deposits; the areas in which R_{flow} is greater than R_{iso} correspond to rocky outcrops with steps/scarps related to structural lineaments and foliation of meta-

Topography-based flow-directional roughness: potential and challenges

S. Trevisani and
M. Cavalli

Title Page

Abstract

Introduction

Conclusions

References

Tables

Figures

◀

▶

◀

▶

Back

Close

Full Screen / Esc

Printer-friendly Version

Interactive Discussion



Topography-based flow-directional roughness: potential and challenges

S. Trevisani and
M. Cavalli

Title Page

Abstract

Introduction

Conclusions

References

Tables

Figures

◀

▶

◀

▶

Back

Close

Full Screen / Esc

Printer-friendly Version

Interactive Discussion



morphic rocks as well as road and trail networks (Fig. 14). It is important to note that the mapping from roughness values to the weighting factors reduces the impact of the relative differences between the two indices of roughness (Table 4). For example, by using the roughness indices, 10 % of the area shows R_{flow} values 32 % lower than those of R_{iso} ; alternatively, by using the weighting factors, 10 % of the area shows W_{flow} values 9.8 % higher than those of W_{iso} (the weighting factor is inversely proportional to roughness). This aspect, which is related to the fact that high relative differences between R_{flow} with respect to R_{iso} are associated with very small roughness values, clearly reduces the impact of differences in the roughness indices on the computation of DC.

The spatial patterns of the maps of DC computed with the two different weighting factors are apparently identical; the spatial comparison of the two indices was performed in terms of differences and relative differences. Given the low values of the DC, it is not surprising that small difference values were derived; a clearer picture can be obtained using relative differences (Fig. 15), both from a spatial viewpoint as well as from a statistical viewpoint. The analysis of Table 5 reveals that the differences and relative differences between DC_{flow} and DC_{iso} are relatively small.

The statistical distribution of DC relative differences is not symmetrical with the prevalence of areas with higher DC_{flow} than DC_{iso} , with 10 % of the area showing DC_{flow} values that are 8.5 % greater than those of DC_{iso} . Moreover, the analysis of relative differences vs. DC_{iso} indicates that the main differences are located in areas of lower connectivity (Fig. 16); these areas are located far from the main stream network toward the headwaters; the shift in the statistical structure of differences is quite evident when the DC_{iso} is lower than 0.001. Even if the relative differences between the two indexes are small, their spatial pattern is quite meaningful (Fig. 17). As expected, the areas in which DC_{flow} is higher than DC_{iso} are located in areas of active sediment dynamics, where erosional and transport processes prevail. It is quite evident, for example (Fig. 17), that areas of higher connectivity with DC_{flow} are located in areas with prevalent erosional processes and evident sources of sediment.

The reliable spatial patterns of relative differences suggest that flow-directional roughness can be effective in the context of the sediment connectivity index. However, the small differences in DCs indicate the limited impact of flow-directional short-range roughness with respect to isotropic roughness in this case study.

4 Conclusions and further research

The possibility of calculating directional roughness indices, such as short-range flow-directional roughness, has interesting potential. The morphological information extracted by the flow-directional roughness, also with its comparison to isotropic roughness, can provide meaningful information from geomorphologic and geo-structural perspectives and for further quantitative usage. Flow-directional based indices could be quantitatively exploited in many geo-modeling and geo-engineering contexts, such as geomorphological and lithological automatic mapping (e.g., Cracknell and Reading, 2014), landslide susceptibility models and geodiversity evaluations (Benito-Calvo et al., 2009; Booth et al., 2009). Flow-directional roughness is a better candidate than isotropic roughness to be used as a proxy of impedance to flow; this is particularly true in areas characterized by strong anisotropy in surface morphology (Trevisani and Rocca, 2015), with elongated morphological features aligned or orthogonal to the direction of flow. This is evident in areas of channelized erosion, where flow-directional roughness is significantly lower than isotropic roughness. Moreover, the ratio between flow-directional roughness and isotropic roughness can find application in multi-temporal studies focusing on morphology evolution (Darboux et al., 2002).

In the context of the sediment connectivity index (Cavalli et al., 2013b), flow-directional roughness is a good index to be used as a weighting factor in the upslope and downslope components. In the case study analyzed, the differences between the degree of connectivity calculated using R_{flow} and that calculated using R_{iso} are more significant in terms of their spatial patterns than their values. The small differences between the two connectivity indices are partially related to the mapping from roughness

Topography-based flow-directional roughness: potential and challenges

S. Trevisani and
M. Cavalli

Title Page

Abstract

Introduction

Conclusions

References

Tables

Figures

◀

▶

◀

▶

Back

Close

Full Screen / Esc

Printer-friendly Version

Interactive Discussion



Topography-based flow-directional roughness: potential and challenges

S. Trevisani and
M. Cavalli

Title Page

Abstract

Introduction

Conclusions

References

Tables

Figures

◀

▶

◀

▶

Back

Close

Full Screen / Esc

Printer-friendly Version

Interactive Discussion



values to the weighting factor that tends to decrease the impact of the roughness indices. Consequently, the derivation of the weighting factor from roughness values is a very delicate procedure that should be analyzed carefully, possibly taking into consideration the processes being modeled.

This study on the use of flow-directional roughness, together with positive and ready to use results, highlights some issues that require further investigation. To fully exploit the potential of flow-directional roughness as a physically based proxy of flow impedance, there are specific issues to be explored. The first topic is related to the derivation of the residual DTM at the base of the roughness calculation, as it influences all the subsequent steps of the analysis. There is the need to define a standardized procedure, e.g., a methodology and degree of smoothing, capable of specifically highlighting the residual topography with the proper wavelengths that is more significant in the context of flow-dynamics. Moreover, as a second topic, this operation should be performed taking into consideration the available resolution of the DTM and also the fact that given the typology of DTMs considered in this work, it is a 2.5-D representation of surface topography (Pollyea and Fairley, 2011).

A final topic worth exploring is related to the use of multi-scale measures of directional roughness given that surface flow processes are influenced by roughness at a variety of scales. The multiscale evaluation of directional roughness in the context of flow-processes includes various open questions; among these, the choice of the maximum lag-distance to consider in the roughness calculation is the first critical point to be addressed; another central point, is related to how to synthesize, in a flow-dynamics-oriented perspective, the multiscale (i.e., at multiple lags) roughness indices (Balaguer et al., 2010; Smith, 2014).

Author contributions. S. Trevisani: Study conception and design; analysis and interpretation of data; drafting of manuscript and images editing; critical revision; M. Cavalli: interpretation of data analysis, drafting of manuscript, critical revision

Acknowledgement. This work was partially conducted within the framework of COST Action ES1306: Connecting European Connectivity Research.

References

- Atkinson, P. M. and Lewis, P.: Geostatistical classification for remote sensing: an introduction, *Comput. Geosci.*, 26, 361–371, 2000.
- Balaguer, A., Ruiz, L. A., Hermosilla, T., and Recio, J. A.: Definition of a comprehensive set of texture semivariogram features and their evaluation for object-oriented image classification, *Comput. Geosci.*, 36, 231–240, 2010.
- Benito-Calvo, A., Pérez-González, A., Magri, O., and Meza, P.: Assessing regional geodiversity: the Iberian Peninsula, *Earth Surf. Proc. Land.*, 34, 1433–1445, 2009.
- Berti, M., Corsini, A., and Daehne, A.: Comparative analysis of surface roughness algorithms for the identification of active landslides, *Geomorphology*, 182, 1–18, 2013.
- Booth, A. M., Roering, J. J., and Perron, J. T.: Automated landslide mapping using spectral analysis and high-resolution topographic data: puget Sound lowlands, Washington, and Portland Hills, Oregon, *Geomorphology*, 109, 132–147, 2009.
- Bue, B. D. and Stepinski, T. F.: Automated classification of landforms on Mars, *Comput. Geosci.*, 32, 604–614, 2006.
- Castellarin, A., Dal Piaz, G. V., Picotti, V., Selli, L., Cantelli, L., Martin, S., Montresor, L., Rigatti, G., Prosser, G., Bollettinari, G., Pellegrini, G. B., Carton, A., and Nardin, M.: Note illustrative della carta geologica d'Italia alla scala 1 : 50000, foglio 059 Tione di Trento. in: APAT and Dipartimento Difesa del Suolo, Servizio Geologico d'Italia, Firenze, Italy, 159 pp., 2005.
- Cavalli, M. and Marchi, L.: Characterisation of the surface morphology of an alpine alluvial fan using airborne LiDAR, *Nat. Hazards Earth Syst. Sci.*, 8, 323–333, doi:10.5194/nhess-8-323-2008, 2008.
- Cavalli, M., Tarolli, P., Marchi, L., and Dalla Fontana, G.: The effectiveness of airborne LiDAR data in the recognition of channel-bed morphology, *Catena*, 73, 249–260, doi:10.1016/j.catena.2007.11.001, 2008.
- Cavalli, M., Trevisani, S., Comiti, F., and Marchi, L.: Geomorphometric assessment of spatial sediment connectivity in small Alpine catchments, *Geomorphology*, 188, 31–41, 2013a.
- Cavalli, M., Trevisani, S., Goldin, B., Mion, E., Crema, S., and Valentinotti, R.: Semi-automatic derivation of channel network from a high-resolution DTM: the example of an Italian alpine region, *Eur. J. Remote Sens.*, 46, 152–174, doi:10.5721/EuJRS20134609, 2013b.

Topography-based flow-directional roughness: potential and challenges

S. Trevisani and
M. Cavalli

Title Page

Abstract

Introduction

Conclusions

References

Tables

Figures

◀

▶

◀

▶

Back

Close

Full Screen / Esc

Printer-friendly Version

Interactive Discussion



ESURFD

3, 1399–1444, 2015

Topography-based flow-directional roughness: potential and challenges

S. Trevisani and
M. Cavalli

Chilès, J.-P. and Delfiner, P.: Geostatistics – Modeling Spatial Uncertainty, John Wiley & Sons, Inc., New Jersey, 2012.

Comiti, F., Marchi, L., Macconi, P., Arattano, M., Bertoldi, G., Borga, M., Brardinoni, F., Cavalli, M., D’Agostino, V., Penna, D., and Theule, J.: A new monitoring station for debris flows in the European Alps: first observations in the Gadria basin, *Nat. Hazards*, 73, 1175–1198, doi:10.1007/s11069-014-1088-5, 2014.

Cracknell, M. J. and Reading, A. M.: Geological mapping using remote sensing data: a comparison of five machine learning algorithms, their response to variations in the spatial distribution of training data and the use of explicit spatial information, *Comput. Geosci.*, 63, 22–33, 2014.

Crema, S., Schenato, L., Goldin, B., Marchi, L., and Cavalli, M.: Toward the development of a stand-alone application for the assessment of sediment connectivity, *Rendiconti Online Società Geologica Italiana*, 34, 58–61, doi:10.3301/ROL.2015.37, 2015.

Cressie, N. E.: *Statistic for Spatial Data*, revised edn., John Wiley & Sons Inc., New York, 1993.

Darbox, F., Davy, P., Gascuel-Odoux, C., and Huang, C.: Evolution of soil surface roughness and flowpath connectivity in overland flow experiments, *Catena*, 46, 125–139, 2002.

Dell’Agnese, A., Brardinoni, F., Toro, M., Mao, L., Engel, M., and Comiti, F.: Bedload transport in a formerly glaciated mountain catchment constrained by particle tracking, *Earth Surf. Dynam.*, 3, 527–542, doi:10.5194/esurf-3-527-2015, 2015.

Fetter, C. W.: *Applied Hydrogeology*, 4th edn., Prentice Hall, New Jersey, USA, 598 pp., 2000.

Frankel, K. L. and Dolan, J. F.: Characterizing arid region alluvial fan surface roughness with airborne laser swath mapping digital topographic data, *J. Geophys. Res.-Earth*, 112, F02025, doi:10.1029/2006JF000644, 2007.

Gademawla, E. S., Koura, M. M., Maksoud, T. M. A., Elewa, I. M., and Soliman, H. H.: Roughness parameters, *J. Mater. Process. Tech.*, 123, 133–145, 2002.

Garrigues, S., Allard, D., Baret, F., and Weiss, M.: Quantifying spatial heterogeneity at the landscape scale using variogram models, *Remote Sens. Environ.*, 103, 81–96, 2006.

Glenn, N. F., Streutker, D. R., Chadwick, D. J., Thackray, G. D., and Dorsch, S. J.: Analysis of LiDAR-derived topographic information for characterizing and differentiating landslide morphology and activity, *Geomorphology*, 73, 131–148, 2006.

Grohmann, C. H., Smith, M. J., and Riccomini, C.: Multiscale analysis of topographic surface roughness in the Midland Valley, Scotland, *IEEE T. Geosci. Remote*, 49, 1200–1213, doi:10.1109/TGRS.2010.2053546, 2011.

Title Page	
Abstract	Introduction
Conclusions	References
Tables	Figures
◀	▶
◀	▶
Back	Close
Full Screen / Esc	
Printer-friendly Version	
Interactive Discussion	



- Herzfeld, U. C.: Master of the obscure – automated geostatistical classification in presence of complex geophysical processes, *Math. Geosci.* 40, 587–618, 2008.
- Herzfeld, U. C. and Higginson, C. A.: Automated geostatistical seafloor classification – principles, parameters, feature vectors, and discrimination criteria, *Comput. Geosci.*, 22, 35–52, 1996.
- Hiller, J. K. and Smith, M.: Residual relief separation: digital elevation model enhancement for geomorphological mapping, *Earth Surf. Proc. Land.*, 33, 2266–2276, 2008.
- Hofle, B. and Rutzinger, M.: Topographic airborne LiDAR in geomorphology: a technological perspective, *Z. Geomorphol.*, 55 (Suppl. 2), 1–29, 2011.
- Jaboyedoff, M., Oppikofer, T., Abellan, A., Derron, M.-H., Loye, A., Metzger, R., and Pedrazzini, A.: Use of LIDAR in landslides investigations: a review, *Nat. Hazards*, 61, 5–28, doi:10.1007/s11069-010-9634-2, 2010.
- Lashermes, B., Foufloula-Georgiou, E., and Dietrich, W. E.: Channel network extraction from high resolution topography using wavelets, *Geophys. Res. Lett.*, 34, L23S04, doi:10.1029/2007GL031140, 2007.
- Lucieer, A. and Stein, A.: Texture-based landform segmentation of LiDAR imagery, *Int. J. Appl. Earth Obs.*, 6, 261–270, 2005.
- Macmillan, R. A., Martin, T. C., Earle, T. J., and Mcnabb, D. H.: Automated analysis and classification of landforms using high-resolution Digital Elevation Data: applications and issues, *Can. J. Remote Sens.*, 29, 592–606, 2003.
- McGarigal, K., Tagil, S., and Cushman, S. A.: Surface metrics: an alternative to patch metrics for the quantification of landscape structure, *Landscape Ecol.*, 24, 433–450, 2009.
- McKean, J. and Roering, J.: Objective landslide detection and surface morphology mapping using high-resolution airborne laser altimetry, *Geomorphology*, 57, 331–351, 2004.
- Melelli, L.: Geodiversity: a new quantitative index for natural protected areas enhancement, *Geojournal of Tourism and Geosites*, 13, 27–37, 2014.
- Pike, R. J.: Geomorphometry – diversity in quantitative surface analysis, *Prog. Phys. Geog.*, 24, 1–20, 2000.
- Pollyea, R. M. and Fairley, J. P.: Estimating surface roughness of terrestrial laser scan data using orthogonal distance regression, *Geology*, 39, 623–626, 2011.
- Roy, S. G., Koons, P. O., Osti, B., Upton, P., and Tucker, G. E.: Multi-scale characterization of topographic anisotropy, *Comput. Geosci.*, doi:10.1016/j.cageo.2015.09.023, online first, 2015.

Topography-based flow-directional roughness: potential and challenges

S. Trevisani and
M. Cavalli

Title Page

Abstract

Introduction

Conclusions

References

Tables

Figures

◀

▶

◀

▶

Back

Close

Full Screen / Esc

Printer-friendly Version

Interactive Discussion



Topography-based flow-directional roughness: potential and challenges

S. Trevisani and
M. Cavalli

Title Page

Abstract

Introduction

Conclusions

References

Tables

Figures

◀

▶

◀

▶

Back

Close

Full Screen / Esc

Printer-friendly Version

Interactive Discussion



Smith, M. W.: Roughness in the Earth Sciences, *Earth-Sci. Rev.*, 136, 202–225, doi:10.1016/j.earscirev.2014.05.016, 2014.

Sofia, G., Pirotti, F., and Tarolli, P.: Variations in multiscale curvature distribution and signatures of LiDAR DTM errors, *Earth Surf. Proc. Land.*, 38, 1116–1134, 2013.

5 Teza, G., Marcato, G., Pasuto, A., and Galgaro, A.: Integration of laser scanning and thermal imaging in monitoring optimization and assessment of rockfall hazard: a case history in the Carnic Alps (Northeastern Italy), *Nat. Hazards*, 76, 1535–1549, 2015.

Trento Province: LiDAR specifications, available at: <http://www.territorio.provincia.tn.it/portal/server.pt/-community/lidar/847/lidar/23954>, last access: 24 November 2015.

10 Trevisani, S. and Rocca, M.: MAD: robust image texture analysis for applications in high resolution geomorphometry, *Comput. Geosci.*, 81, 78–92, doi:10.1016/j.cageo.2015.04.003, 2015.

Trevisani, S., Cavalli, M., and Marchi, L.: Variogram maps from LiDAR data as fingerprints of surface morphology on scree slopes, *Nat. Hazards Earth Syst. Sci.*, 9, 129–133, doi:10.5194/nhess-9-129-2009, 2009.

15 Trevisani, S., Cavalli, M., and Marchi, L.: Reading the bed morphology of a mountain stream: a geomorphometric study on high-resolution topographic data, *Hydrol. Earth Syst. Sci.*, 14, 393–405, doi:10.5194/hess-14-393-2010, 2010.

Trevisani, S., Cavalli, M., and Marchi, L.: Surface texture analysis of a high-resolution DTM: interpreting an alpine basin, *Geomorphology*, 161–162, 26–39, 2012.

20 Westoby, M. J., Brasington, J., Glasser, N. F., Hambrey, M. J., and Reynolds, J. M.: “Structure-from-Motion” photogrammetry: a low-cost, effective tool for geoscience applications, *Geomorphology*, 179, 300–314, doi:10.1016/j.geomorph.2012.08.021, 2012.

Woodcock, C. E., Strahler, A. H., and Jupp, D. L. B.: The use of variograms in remote sensing: II. Real digital images, *Remote Sens. Environ.*, 25, 349–379, 1988.

Topography-based flow-directional roughness: potential and challenges

S. Trevisani and
M. Cavalli

Title Page

Abstract

Introduction

Conclusions

References

Tables

Figures

⏪

⏩

◀

▶

Back

Close

Full Screen / Esc

Printer-friendly Version

Interactive Discussion



Table 1. Quantiles of residual DTM.

	0%	10%	20%	30%	40%	50%	60%	70%	80%	90%	100%
Residual (m)	-182.2	-0.423	-0.213	-0.115	-0.051	-0.004	0.041	0.107	0.21	0.431	190.8

Topography-based flow-directional roughness: potential and challenges

S. Trevisani and
M. Cavalli

Table 2. Quantiles of R_{flow} and R_{iso} .

	0 %	10 %	20 %	30 %	40 %	50 %	60 %	70 %	80 %	90 %	100 %
R_{flow} (m)	0.001	0.056	0.081	0.103	0.127	0.157	0.196	0.256	0.362	0.616	219.66
R_{iso} (m)	0.001	0.062	0.088	0.11	0.133	0.162	0.201	0.258	0.355	0.587	98.04

Title Page

Abstract

Introduction

Conclusions

References

Tables

Figures

⏪

⏩

◀

▶

Back

Close

Full Screen / Esc

Printer-friendly Version

Interactive Discussion



Topography-based flow-directional roughness: potential and challenges

S. Trevisani and
M. Cavalli

Table 3. Quantiles of the differences and the relative differences (Rel. Dif. (%)) between R_{flow} and R_{iso} .

	0 %	10 %	20 %	30 %	40 %	50 %	60 %	70 %	80 %	90 %	100 %
$R_{\text{flow}} - R_{\text{iso}}$ (m)	-31.064	-0.073	-0.036	-0.019	-0.008	0.001	0.009	0.022	0.043	0.095	131.8
Rel. dif. (%)	-99.225	-33.632	-22.353	-13.9	-6.494	0.535	7.685	15.306	24.064	35.519	300

[Title Page](#)
[Abstract](#)
[Introduction](#)
[Conclusions](#)
[References](#)
[Tables](#)
[Figures](#)




[Back](#)
[Close](#)
[Full Screen / Esc](#)
[Printer-friendly Version](#)
[Interactive Discussion](#)


Topography-based flow-directional roughness: potential and challenges

S. Trevisani and
M. Cavalli

Table 4. Roughness indices and impact on the weighting factor. The first two rows represent the quantiles of R_{flow} and R_{iso} . The last two rows represent the quantiles of the relative differences between the roughness indexes (R rel. diff. (%)) and quantiles of the relative differences between weighting factors (W rel. diff. (%)).

	0%	10%	20%	30%	40%	50%	60%	70%	80%	90%	100%
R_{flow} (m)	0	0.035	0.047	0.058	0.07	0.083	0.099	0.12	0.155	0.232	7.46
R_{iso} (m)	0	0.0397	0.0522	0.0635	0.075	0.0872	0.1025	0.1232	0.1572	0.229	5.304
R rel. diff. (%)	-93.186	-32.961	-22.785	-15.242	-8.647	-2.347	4.054	11.017	19.184	30.091	233.33
W rel. diff. (%)	-97.386	-6.176	-4.035	-2.382	-0.899	0.537	2.039	3.733	5.866	9.184	79.202

[Title Page](#)
[Abstract](#)
[Introduction](#)
[Conclusions](#)
[References](#)
[Tables](#)
[Figures](#)
[Back](#)
[Close](#)
[Full Screen / Esc](#)
[Printer-friendly Version](#)
[Interactive Discussion](#)


Topography-based flow-directional roughness: potential and challenges

S. Trevisani and
M. Cavalli

Table 5. Quantiles of DC_{flow} and comparison with DC_{iso} .

	0%	10%	20%	30%	40%	50%	60%	70%	80%	90%	100%
DC_{flow}	0	0.00002	0.00004	0.00008	0.00013	0.00021	0.00036	0.0006	0.00115	0.00307	1
DC rel. diff. (%)	-60.4	-3	-1	0.4	1.6	2.6	3.5	4.5	5.9	8.5	109.3

Title Page

Abstract

Introduction

Conclusions

References

Tables

Figures

⏪

⏩

◀

▶

Back

Close

Full Screen / Esc

Printer-friendly Version

Interactive Discussion



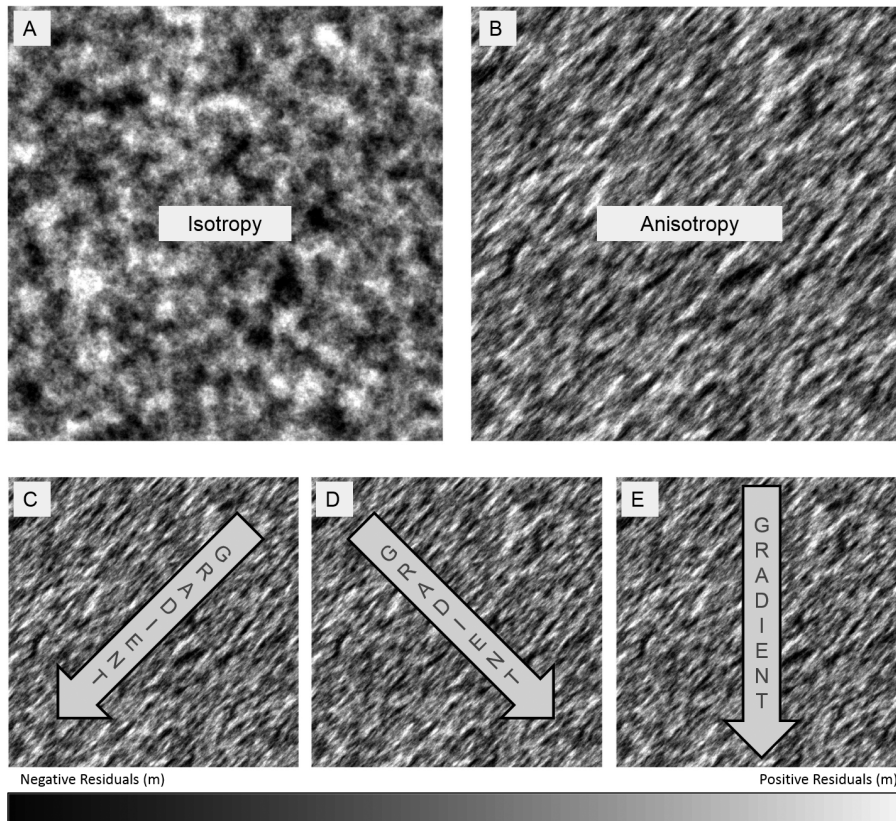


Figure 1. Anisotropy in surface texture and impact on surface flow. Synthetic residual DTMs with isotropic **(a)** and anisotropic **(b)** surface texture. In presence of anisotropy, the effective flow is influenced by the angle between the direction of the gravity gradient respect the direction of maximum continuity (DMC) of surface morphology. **(c)** Gradient aligned to the DMC (minimum resistance); **(d)** gradient orthogonal to the direction of DMC (maximum resistance); **(e)** gradient at an angle respect to the DMC (deflection of flow lines respect gradient direction).

Topography-based flow-directional roughness: potential and challenges

S. Trevisani and
M. Cavalli

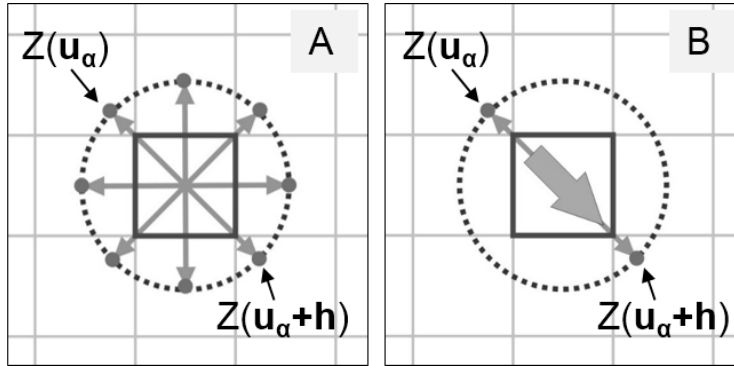


Figure 2. Directional differences with a lag of two pixels for the calculation of short-range roughness indices. The values of directional differences are associated to the central pixel (highlighted in black, see Trevisani, 2015). **(a)** Directional differences for omnidirectional roughness; **(b)** directional differences for the calculation of flow-directional roughness (local flow direction indicated by the thick gray-filled arrow).

Title Page	
Abstract	Introduction
Conclusions	References
Tables	Figures
◀	▶
◀	▶
Back	Close
Full Screen / Esc	
Printer-friendly Version	
Interactive Discussion	



Topography-based flow-directional roughness: potential and challenges

S. Trevisani and
M. Cavalli

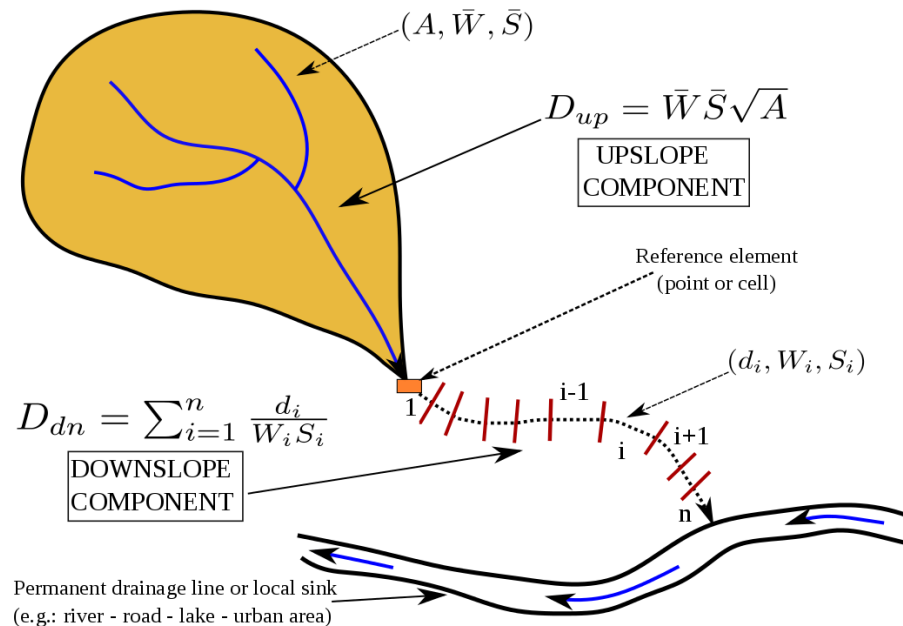


Figure 3. Definition of the upslope and downslope component of the index of connectivity (from Crema et al., 2015; modified after Borselli et al., 2008). A : contributing area to the reference element; W_i : weighting factor of the i th pixel; \bar{W} : average weighting factor of the contributing area; S_i : slope of the i th pixel; \bar{S} : average slope of the contributing area.

Topography-based flow-directional roughness: potential and challenges

S. Trevisani and
M. Cavalli

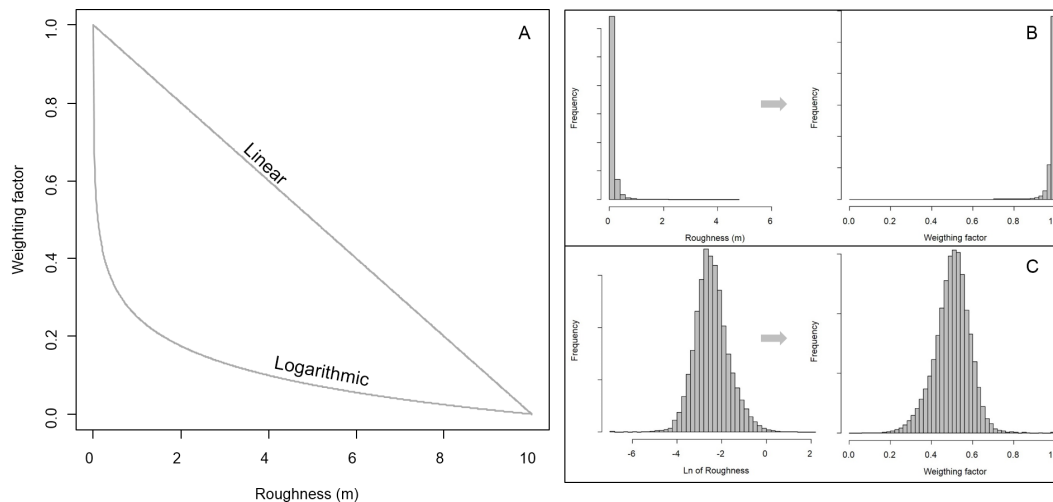


Figure 4. Mapping from roughness values to weighting factor. **(a)** Mapping curves (supposing roughness variation in the range from 0 to 10 m). The impact of the two different transformations on the weighting factor histogram is represented in **(b)** (linear) and in **(c)** (logarithmic) for experimental roughness values (R_{flow}).



Figure 5. Location of the two case studies and relative coverage areas.

**Topography-based
 flow-directional
 roughness: potential
 and challenges**

S. Trevisani and
 M. Cavalli

Title Page

Abstract Introduction

Conclusions References

Tables Figures

◀ ▶

◀ ▶

Back Close

Full Screen / Esc

Printer-friendly Version

Interactive Discussion



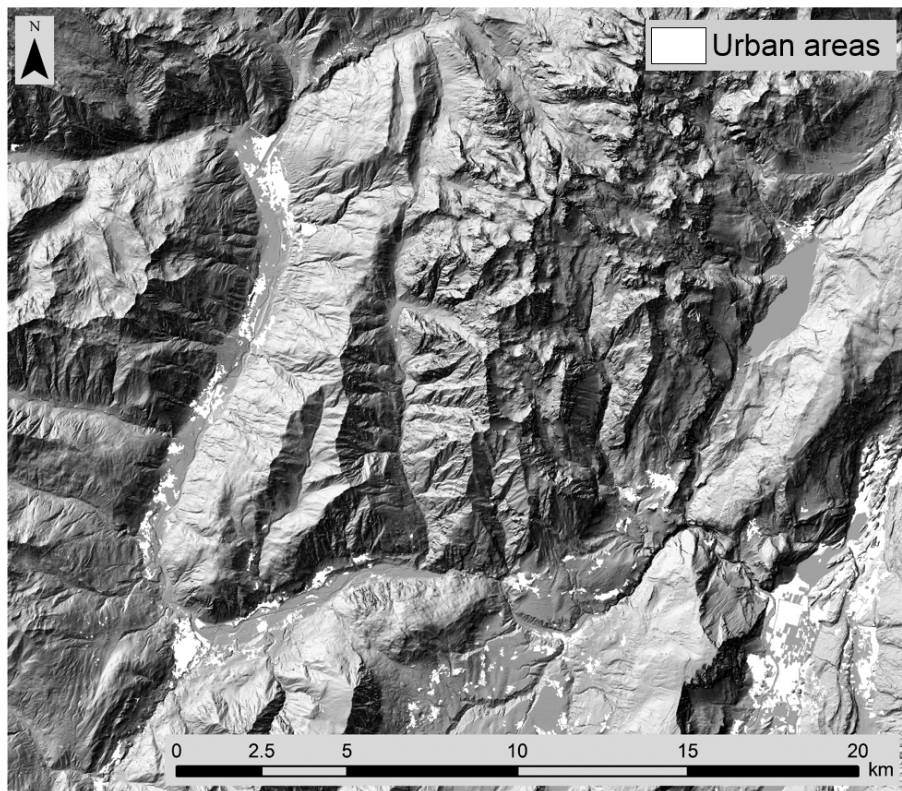


Figure 6. Shaded relief of study area Site 1 (in white areas of main urbanization and anthropic influence, excluding road network).

Topography-based flow-directional roughness: potential and challenges

S. Trevisani and
M. Cavalli

Title Page

Abstract

Introduction

Conclusions

References

Tables

Figures

◀

▶

◀

▶

Back

Close

Full Screen / Esc

Printer-friendly Version

Interactive Discussion

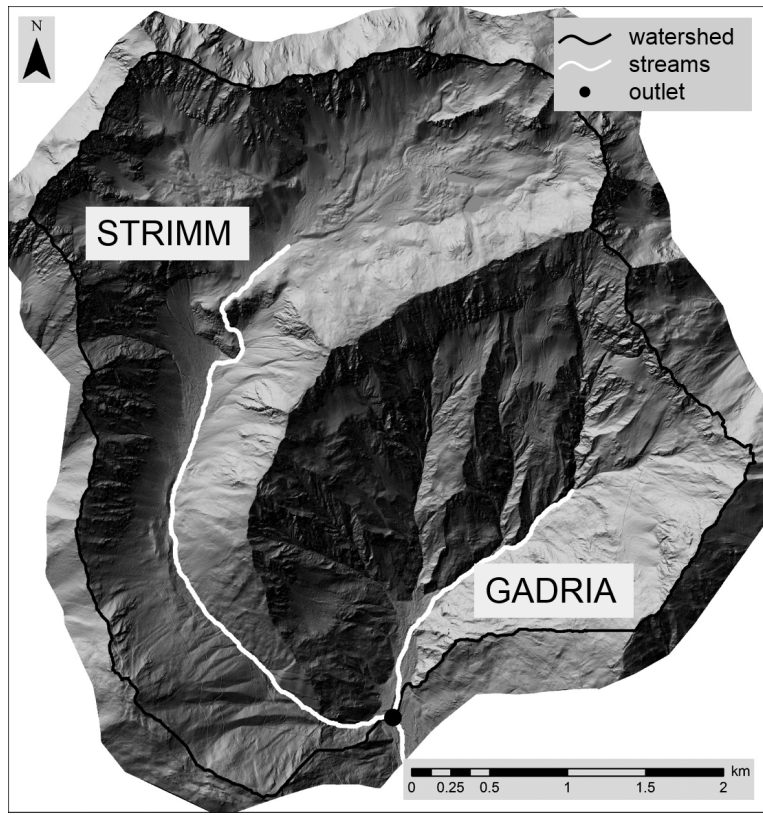


Figure 7. Shaded relief of study area Site 2 (black thick line: watershed; white lines: main streams; black filled circle: basin outlet).

ESURFD

3, 1399–1444, 2015

Topography-based flow-directional roughness: potential and challenges

S. Trevisani and
M. Cavalli

Title Page	
Abstract	Introduction
Conclusions	References
Tables	Figures
◀	▶
◀	▶
Back	Close
Full Screen / Esc	
Printer-friendly Version	
Interactive Discussion	



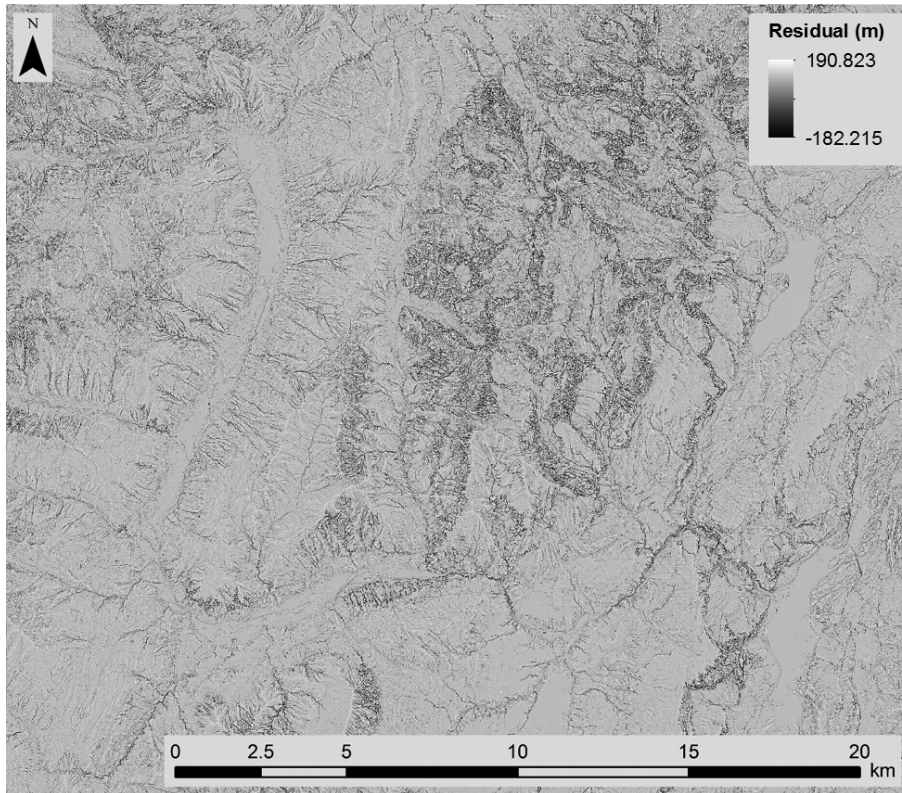


Figure 8. Residual DTM for study Site 1.

ESURFD

3, 1399–1444, 2015

Topography-based flow-directional roughness: potential and challenges

S. Trevisani and
M. Cavalli

Title Page

Abstract

Introduction

Conclusions

References

Tables

Figures

◀

▶

◀

▶

Back

Close

Full Screen / Esc

Printer-friendly Version

Interactive Discussion



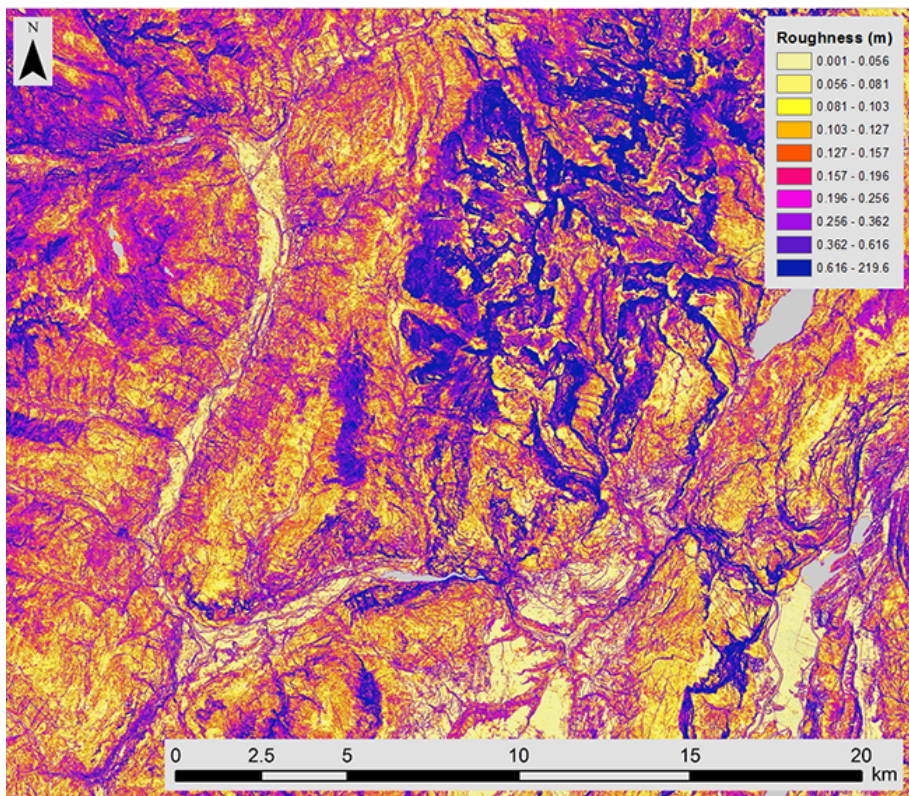


Figure 9. Short-range flow directional roughness for case study Site 1 (color scale according to quantile classification).

**Topography-based
flow-directional
roughness: potential
and challenges**

S. Trevisani and
M. Cavalli

Title Page

Abstract

Introduction

Conclusions

References

Tables

Figures

◀

▶

◀

▶

Back

Close

Full Screen / Esc

Printer-friendly Version

Interactive Discussion



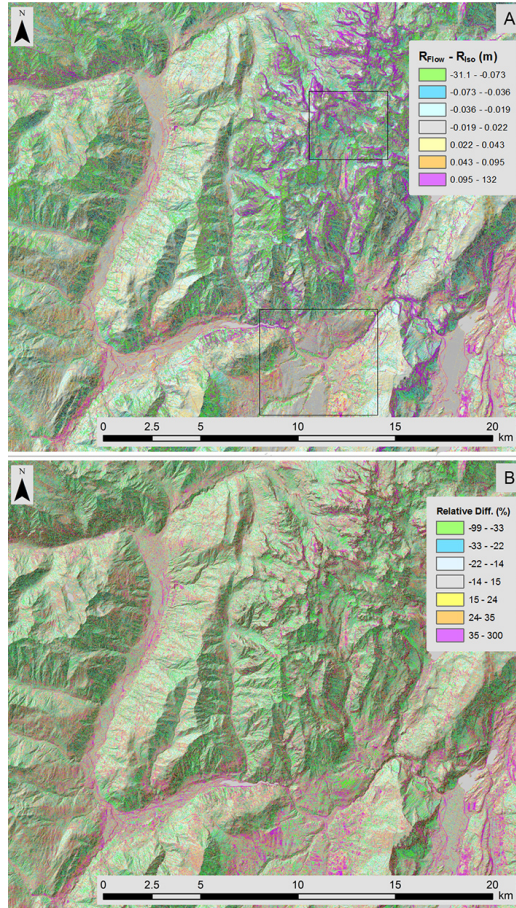


Figure 10. Differences and relative differences between R_{flow} and R_{iso} (color scales according to quantile classification). The areas represented in higher detail in the Figs. 11 and 12 have been highlighted.

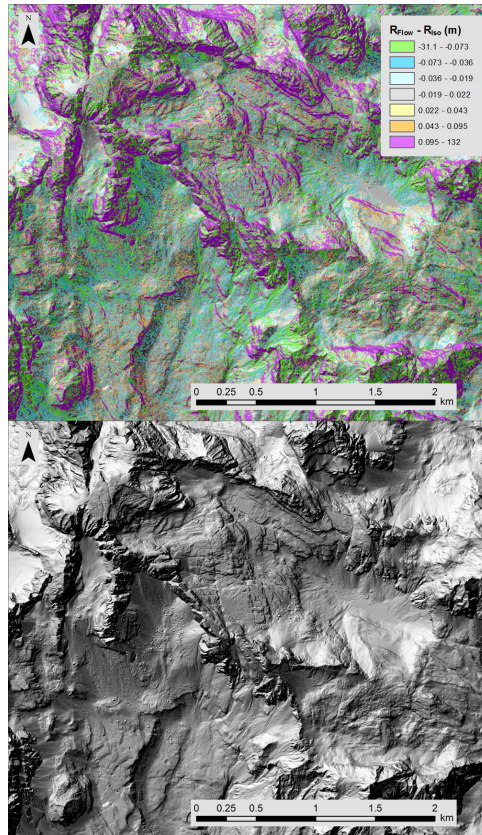


Figure 11. Differences between R_{flow} and R_{iso} in an area of high altitude with a limited anthropic influence. Purple features individuate elongated morphologies with the main axis oriented at right angle to slope (e.g., outcropping sub-horizontal geological strata). Light-green features individuate elongated morphologies with the main axis oriented along the slope (e.g., channels and other erosional features).

**Topography-based
flow-directional
roughness: potential
and challenges**

S. Trevisani and
M. Cavalli

Title Page

Abstract

Introduction

Conclusions

References

Tables

Figures

◀

▶

◀

▶

Back

Close

Full Screen / Esc

Printer-friendly Version

Interactive Discussion



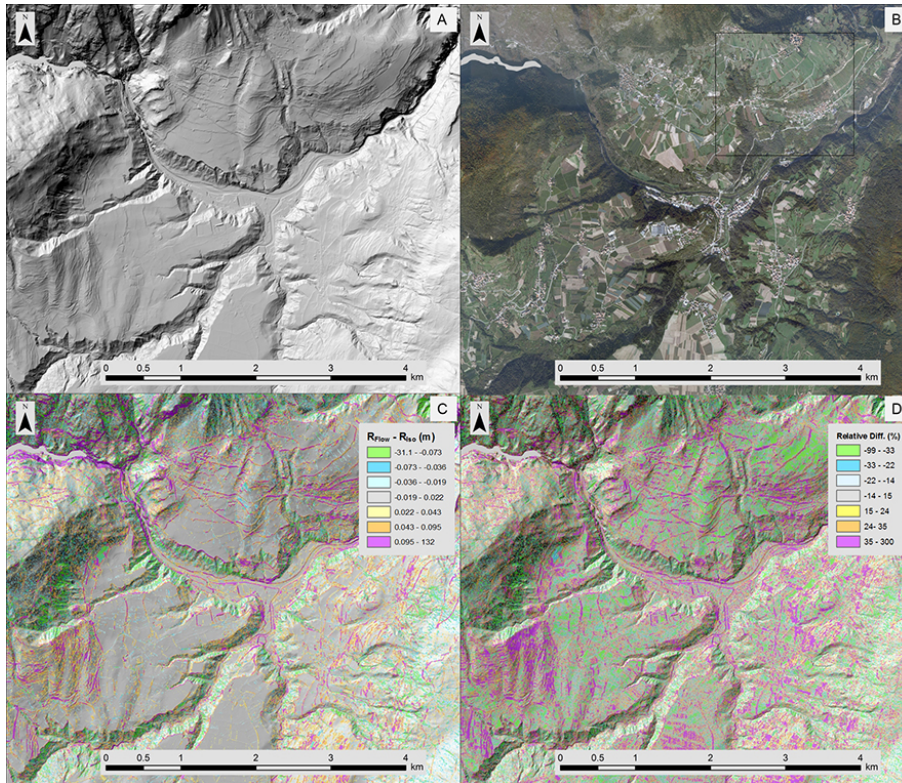


Figure 12. Differences and relative differences between R_{flow} and R_{iso} in highly anthropized environment. **(a)** residual DTM, **(b)** orthophotos; **(c)** differences between R_{flow} and R_{iso} ; **(d)** relative differences between R_{flow} and R_{iso} . Terraces scarps and the road network are the main contributor of features (purple) with a higher R_{flow} than R_{iso} . Areas with erosional processes located along the flanks of the main valleys are particularly highlighted by features (light green) with lower R_{flow} than R_{iso} . For the highlighted area in **(b)** see Fig. 13.

**Topography-based
flow-directional
roughness: potential
and challenges**

S. Trevisani and
M. Cavalli

Title Page

Abstract

Introduction

Conclusions

References

Tables

Figures

◀

▶

◀

▶

Back

Close

Full Screen / Esc

Printer-friendly Version

Interactive Discussion

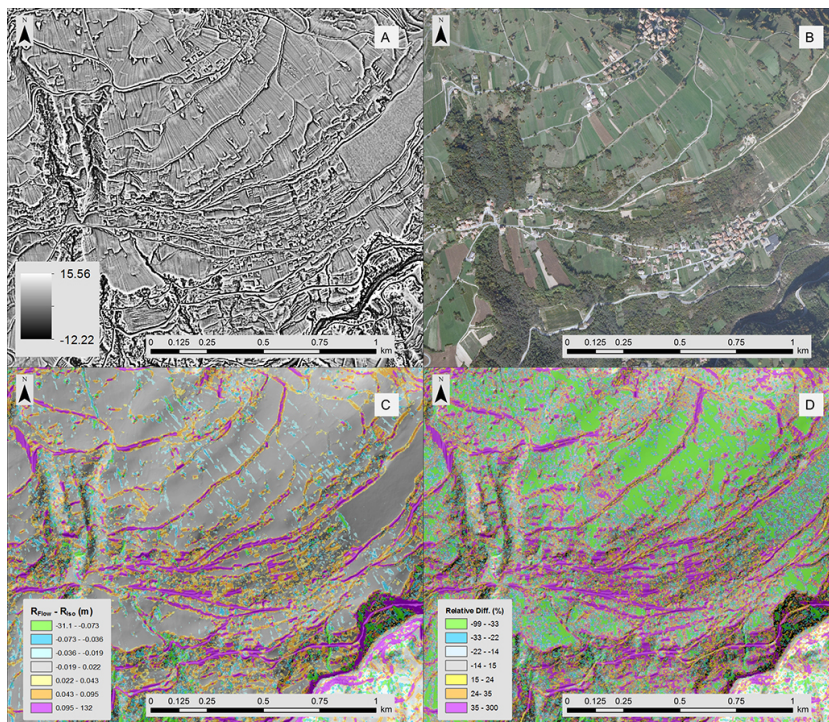


Figure 13. Detailed view of differences and relative differences between R_{flow} and R_{iso} in a highly anthropized environment. **(a)** Residual DTM, **(b)** hortophotos; **(c)** differences between R_{flow} and R_{iso} ; **(d)** relative differences between R_{flow} and R_{iso} . The areas with rows related to various agriculture crops are often characterized by striping artefacts in the DTM (see **a** and **b**). In term of differences, these areas are slightly appreciable, having absolute values less than 0.02 m; however, the impact on relative differences is significant, with areas (light green features, **b**) with R_{flow} lower than 30 % of R_{iso} in correspondence of fields with rows aligned to flow-direction.

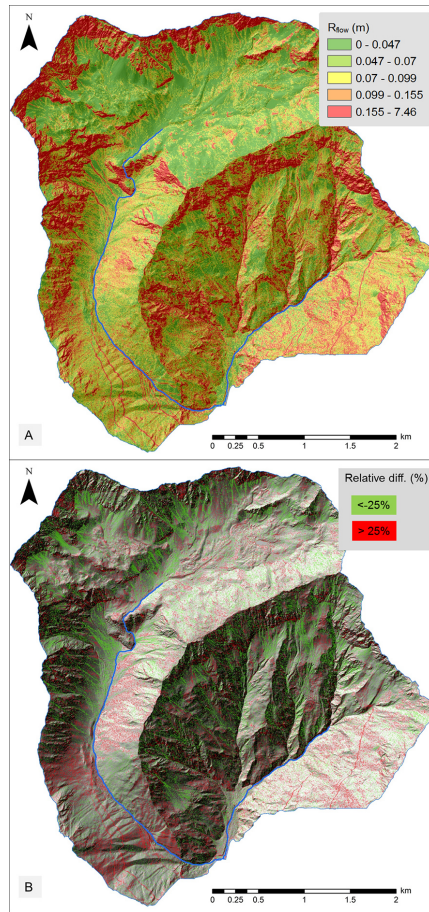


Figure 14. R_{flow} (a) and relative differences between R_{flow} and R_{iso} (b). Areas with active sediment dynamics related to flow processes (erosion, transport and deposition) are highlighted by lower R_{flow} values than R_{iso} (green features).

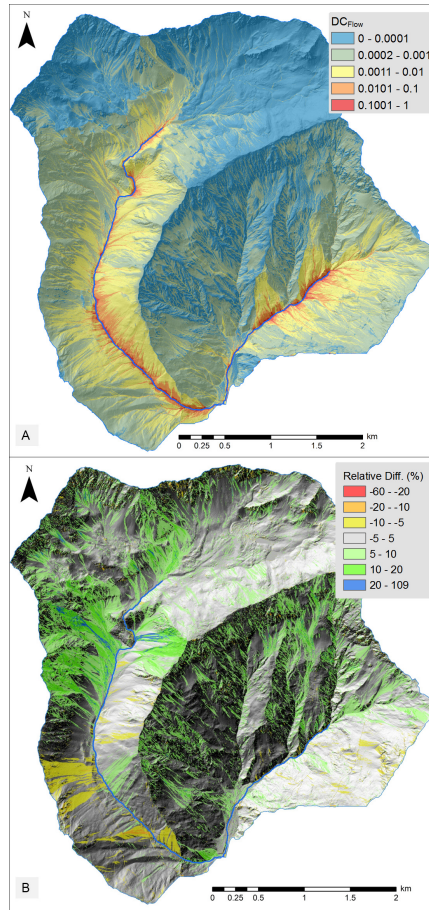


Figure 15. DC_{flow} distribution (a) and relative differences between DC_{flow} and DC_{iso} (b). The prevalence of areas with higher DC_{flow} than DC_{iso} is in accordance with the high activity of sediment dynamics in the studied basin.

**Topography-based
flow-directional
roughness: potential
and challenges**

S. Trevisani and
M. Cavalli

Title Page

Abstract

Introduction

Conclusions

References

Tables

Figures

◀

▶

◀

▶

Back

Close

Full Screen / Esc

Printer-friendly Version

Interactive Discussion

Topography-based flow-direction roughness: potential and challenges

S. Trevisani and
M. Cavalli

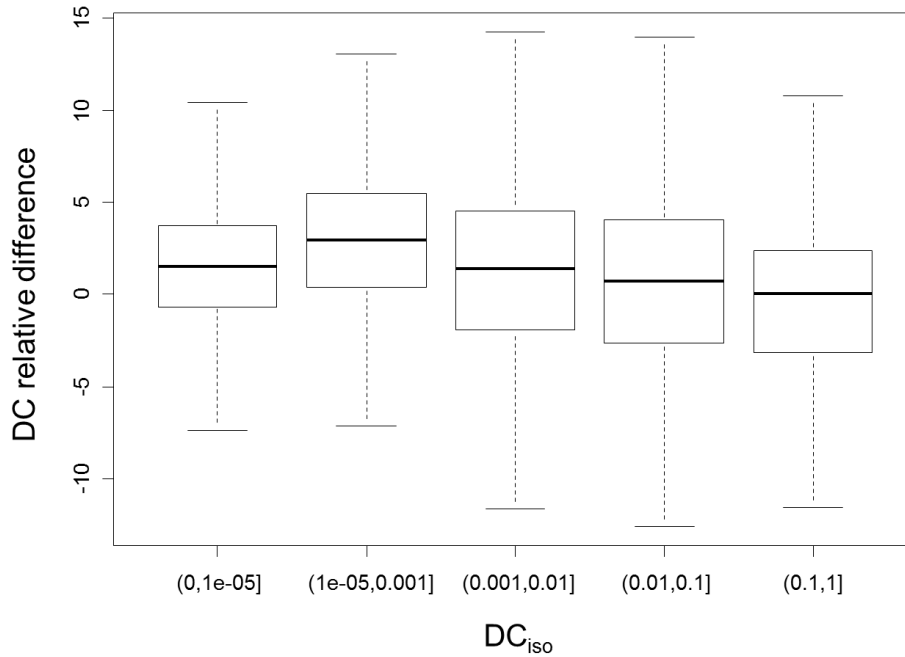


Figure 16. Boxplot of relative differences (%) between DC_{flow} vs. DC_{iso} grouped in classes of increasing DC_{iso} .

Title Page

Abstract

Introduction

Conclusions

References

Tables

Figures



Back

Close

Full Screen / Esc

Printer-friendly Version

Interactive Discussion



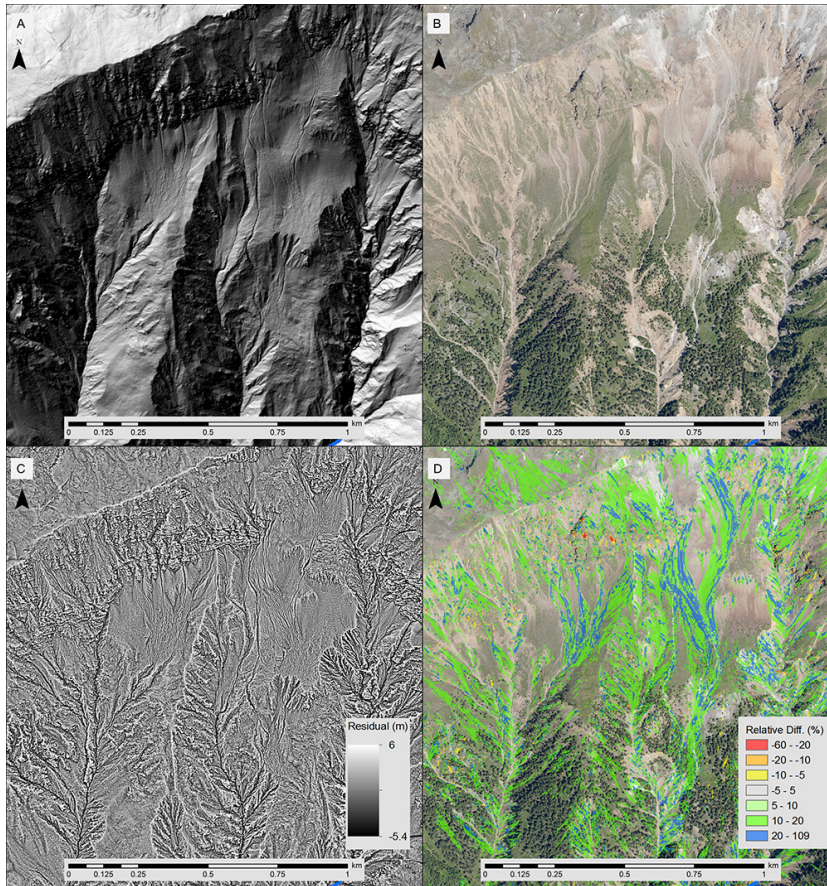


Figure 17. Detailed view of an area with active erosional processes; the good match between zones with higher DC_{flow} than DC_{iso} and zones of active erosion, highlighted by the lack of vegetation, is evident.