

Dear Editor Dr. Metivier,

In the following pages you will find our detailed responses to the comments and criticisms raised by reviewers Dr. Sarah Boulton and Dr. Mary Ford. Both reviewers improved the manuscript mostly through clarifying points. Most of the points raised by the reviewers were easily addressed with small changes to the text and a comment my Dr. Ford required minor changes to panels a and b of figure 1. In all, the revisions required by the reviews were relatively minor and no changes to the data analysis, interpretations or conclusions were required.

We first include detailed responses to each reviewer that outline where we have made changes to our manuscript to address a specific comment or provide a detailed explanation or why we respectfully disagree with a particular reviewer comment. These files are the same as those uploaded for public viewing in response to the reviewers. At the end of this pdf is a “tracked changes” version of the manuscript showing exactly where we made changes to our manuscript.

Should you have any questions please do not hesitate to email.

Regards,

Sean Gallen and Karl Wegmann.

Dear Associate Editor Pr. Metivier,

Below you will find our detailed responses to Dr. Boulton's review of our manuscript entitled "River profile response to normal fault growth and linkage: An example from the Hellenic forearc of south-central Crete, Greece". In this document we detail where we have made changes to the manuscript to reflect comments or criticisms raised by Dr. Boulton or explain why we respectfully disagree with a specific comment. Since the discussion period is still open, we are awaiting further reviews before submitting the revised version of our manuscript.

Sincerely,

Dr. Sean F. Gallen & Dr. Karl W. Wegmann

Interactive comment on "River profile response to normal fault growth and linkage: An example from the Hellenic forearc of south-central Crete, Greece" by Sean F. Gallen and Karl W. Wegmann

S. Boulton (Referee)

sarah.boulton@plymouth.ac.uk

Received and published: 21 December 2016

This paper investigates river response to uplift along the southern margin of Crete, using well known fluvial geomorphic metrics and previously published data on the rate of uplift and behaviour of recently linked normal faults. The paper draws some interesting conclusions on the role of river capture on river profile evolution and the potential pitfalls of this technique in some areas. The background to river analysis and the geology/geomorphology of the study area are very well presented and described as are the results. The discussion is well structured and outlines the authors arguments well. There are only minor comments that need to be addressed prior to publication.

*We thank Dr. Boulton for her thorough review and below we detail how we have addressed each of her specific comments in the revised version of our manuscript. Dr. Boulton's comments are in **bold text** and our responses are in *blue italics*.*

Page 3, lines 10-15. This paragraph sets up an argument based upon the work of Attal et al., (2015) and Shobe et al., (2016). Shobe et al., is described but the work of Attal is not elaborated upon and instead Brocard et al., (2016) is introduced. I find that this is rather unsatisfactory as Attal et al.'s contribution is unclear in this review.

We agree with the reviewer and have elaborated on Attal et al.'s contribution to our understanding of this topic. We have also revised the text so that the Brocard study is better integrated into the paragraph by removing the initial sentence that specifically mentions Attal et al., (2015) and Shobe et al., (2016) because it was unnecessary. The new text is as follows:

"Several recent studies highlight observations of spatially heterogeneous changes in the flux and size of sediment delivered to the channel in transient landscapes that might be missed by simple expressions of sediment flux that are only scaled to local channel slope and drainage area, a proxy for discharge. Attal et al. (2015) document that hillslope steepness and erosion rates are positively correlated to changes in sediment grain size on hillslopes and along the adjoining river channel bed in catchments undergoing transient adjustment."

Page 7, line 6. Missing parenthesis after (Fig. 2.

We have added the closing parenthesis.

Page 7, Lines 10 and 11. See also Kent et al., (2016). Kent, E., Boulton, S. J., Whittaker, A.C., Stewart, I.S., & Alçiçek, M.C. 2016. River profiles as recorders of fault linkage and slip rate increases in the Gediz (Alaşehir) Graben, Turkey. *Earth Surface Process and Landforms*. Doi: 10.1002/esp.4049

Thank you for pointing us toward this relevant study. We have read this new research and have included the reference into our manuscript.

Page 9, line 19. Headward

We have corrected this spelling error.

Section 3.1/4.1. These sections incorporate a monte carlo approach to calculate the uplift rate along the coast and at individual sites, a nice idea but the results leave me with a number of questions/comments. An average uplift rate is determined, shown in figure 3a (I think the figure caption should state the uplift rate or it should be shown on the figure). However, it needs to be made clearer that these are post-linkage uplift rates.

We have added a sentence to the figure caption indicating that the site average uplift rate is for site 6. To better clarify that figure 3b shows post-linkage uplift rates we have changed the caption to state “b. Post-fault linkage site average uplift rates...”.

Also I would have liked to see the authors try to narrow down the timing of linkage, as currently they simply use the previous estimate of < 1 Myrs ago.

In the first section of the discussion (section 5.1 Long-term versus intermediate vertical displacement patterns) we discuss the rationale that we use to approximate the timing of linkage. Our rationale for placing this calculation so late in the text is because it is an interpretation and would be difficult to explain elsewhere in the text.

Also have you any constraints on pre-linkage uplift rates?

We do not have any independent constraints on the pre-linkage uplift rates. We had initially hoped that we would be able to: (1) use the post-linkage uplift rates and lowest river profile segments that cross the normal fault footwalls in order to empirically derive variables in the stream power incision model. (2) With a calibrated incision model, we would then be able to infer pre-linkage uplift rates from the middle river profile segment (the segment between the lower and higher knickpoints) from each footwall. However, for reasons that become clear in the manuscript, we lack confidence in our empirical calibration of the stream power model for south-central Crete, and thus decided not to infer uplift rates from the river profiles.

Although the mouth of the rivers on the Dikti block enter the sea on the hangingwall block, knickpoints in these rivers are still going to be formed by the initiation of faulting or change in footwall uplift rates on the SSCF. How do the rates of hangingwall and footwall uplift compare? Many studies of the hangingwall to footwall motion cite ratios of 1/4 to 1/3 partitioning.

We do not have independent constraints on the rates of uplift on the Dikti footwall; however, we can compare the post-linkage uplift rates from the hanging wall and footwall of the composite fault system near the site of linkage (see figure 3b). This analysis was initially reported in Gallen et al. (2014), in which we published our marine terrace chronostratigraphy and rock uplift results that we utilize as a starting point for this manuscript. In Gallen et al. (2014), we found that the hanging wall-to-footwall uplift rate ratio is roughly 1/3.

Page 12 section 3.3 I am interested that you have defined knickpoints as a 25% difference between Ksn upstream and downstream, what is your rationale for this number?

This number is admittedly arbitrary, but was sufficiently large to avoid inclusion of small jumps in river channel steepness that are more likely to represent noise or artifacts in the DEM, while also being small enough that we could identify inflections in all river profiles analyzed in the study. To clarify this point we have added the following text:

“While this change in steepness is admittedly an arbitrary cut-off to identify knickpoints, it is sufficiently large to avoid including unwanted noise or DEM artifacts in our analysis and sufficiently small so that we could confidently identify inflection points in all river profiles analyzed in this study.”

Is that consistent with where known active faults cross channels?

The jumps in normalized channel steepness (K_{sn}) where the channel crosses over active faults are generally higher than 25%. The mapping of active faults in the study area is detailed enough that we are confident that we can identify knickpoints related to spatial changes in rock uplift rate across mapped faults from transient knickpoints resulting from temporal changes in slip rate/uplift rate across said faults.

Section 4.3 Although I agree that the two sets of knickpoints represent two phases of development it would be nice if there was some test of this hypothesis. How about presenting distance migrated upstream vs catchment drainage area. Faults of the same generation should exhibit a power law relationship.

The suggested distance migrated vs. drainage area analysis was performed before our initial submission. We decided not to include this analysis because the metric χ can be used in much the same way and thus the extra figure provided little additional insight. Provided that substrate erodibility is roughly homogeneous, knickpoints of a common origin will have the same χ value. To clarify the ability of χ to assist in the determination of whether or not knickpoints are of a common origin we have added the following text to the end of section 2.5, our background on river profile analysis: “Furthermore, if substrate erodibility is homogenous, χ represents a measure of the river response time to a state change in incision (uplift) rate that is manifested in the formation and presence of a knickpoint. Knickpoints from a common origin will travel at the same rate in χ transformed space. In other words, knickpoints found at approximately the same χ distance are related.”

It is worth noting that much of our discussion focuses on testing if these knickpoints are related. The most compelling evidence is the changes in the relative patterns of river channel steepness that are consistent with the geological evidence of recent fault linkage and the predictions of changes in the spatial and temporal patterns of uplift based on fault mechanics theory. Our discussion largely focuses on an attempt to understand why knickpoint travel distances for streams from the south-central coast of Crete do not conform to predictions of the stream power incision model.

Section 5.1 lines 18-21. Ah – I think that this information on the timing of fault linkage should be presented earlier.

We understand the desire of the reviewer to present this earlier, but we think that this calculation is better suited for the discussion because it is an interpretation. However, if the reviewer feels strongly that we should move this discussion to earlier in the manuscript we can try to accommodate this suggestion.

Page 15, Line 31 – . . .in uplift rate determinations. . .?

Thanks for catching this typo. The reviewer is correct and we have fixed the typo.

Page 16, line 21 (also page 17, line) What mechanism caused the first increase in uplift rate, if there is no linkage? What evidence is there for previous slow uplift? Why does a shallow river indicate slow uplift? Why could not the upper knickpoint represent the initiation of faulting?

This is an excellent question. We discuss this exact question at the end of this section. The reviewer brings up a good point about the possible origins of the signal of uplift recorded by the river reaches above generation 1 knickpoints and we address this below.

Page 18, lines 29-32. I might have misunderstood but this sentence appears to contradict the discussion two pages earlier, as you are now saying the upland areas are 'relict' topography from prior to fault initiation.

Dr. Boulton brings up a good point and based on the previous comment we have revised the second sentence of the last paragraph in Section 5.3.1 for clarification. The revised sentence is as follows: "Our interpretation is that many of these low-gradient reaches possibly record the background regional rates of rock uplift of the forearc prior to faulting and/or the uplift rates at the initiation of normal faulting along the south-central coast of Crete."

Page 19, lines 23. I know that assumptions need to be made, but having been to gorges in southern Crete, channel narrowing seems to be important and should not be discounted so easily. Perhaps saying that this variable is beyond the scope of the paper would be better than saying it is not important. This change might also explain some of the variability you observe in your data.

The reviewer is entirely correct and we acknowledge that so easily disregarding the influence of changes in channel width is not permitted. To clarify we have modified the end of the first paragraph in section 5.3.2 as follow:

"However, it is beyond the scope of this study to assess the impact of this variable on river profile analysis. Nonetheless, our results demonstrate that rivers in south-central Crete steepen in response to increased uplift rates. Under the assumption that river channel steepening is the dominant mechanism by which rivers respond to changes in rock uplift rate, regression through k_{sn} – uplift rate data by an orthogonal least-squares method can be used to empirically calibrate parameters in the stream power incision model under different assumptions."

Page 20, line 24. Whittaker and Boulton also (2011) demonstrated that knickpoint migration is a function of uplift rate, with higher uplift rates resulting in more rapid migration of knickpoints through the landscape.

We are aware of the empirical work of Whittaker and Boulton (2011) on the relationship between knickpoint migration rates, climate and uplift. Here, however, we are simply referring to theoretical considerations and have modified this sentence to make this explicit. The revised sentence is as follows: "It is important to note that Eq. (9) does not incorporate a component of uplift, such that from theory alone, knickpoint celerity is not dependent on uplift rate."

We note that while Whittaker and Boulton (2011) document a correlation between rock uplift rate and knickpoint travel distance, the exact factor determining those changes is unknown. For example, unaccounted for changes in channel width, sediment flux, sediment grain size, and or rock fracture may change in concert with rock uplift rate. In such a case, this would result in changes in the slope exponent, n , or erodibility parameter, K , in the stream power incision model. In such a case, changes in n or K would be responsible for driving changes in knickpoint celerity, rather than uplift rate, although these parameters might be dependent on rock uplift rates. However, we think that an extended discussion of the work of Whittaker and Boulton (2011) is beyond the scope of this study as we are merely trying to illustrate the link between river channel response time and the erodibility constant.

Dear Associate Editor Pr. Metivier,

Below you will find our detailed responses to Dr. Ford's review of our manuscript "River profile response to normal fault growth and linkage: An example from the Hellenic forearc of south-central Crete, Greece". Here we describe where we have made changes to the manuscript to address Dr. Ford's comments or explain why we respectfully disagree with a particular comment. As you will see, most of Dr. Ford's comments were easily addressed and the only important changes to the manuscript were the addition of a sentence in the abstract to clarify the specific objectives of our study and some minor changes to panels a and b in figure 1.

Interactive comment on "River profile response to normal fault growth and linkage: An example from the Hellenic forearc of south-central Crete, Greece" by Sean F. Gallen and Karl W. Wegmann

M. Ford (Referee)

mary.ford@univ-lorraine.fr

Received and published: 12 January 2017

This paper presents a detailed analysis of vertical motions on active faults and of river profile evolution in response to normal fault growth and linkage in southern Crete. The paper presents good data sets, is well written and illustrated and gives a thorough review of literature. My comments focus on the structural framework of the study area and the interpretation of data in terms of fault growth and linkage. On these subjects I have concerns and questions regarding the application of models to the case study, terminology used and the derived interpretations.

*We thank Dr. Ford for taking the time to review our manuscript and provide important and useful critical feedback. Below we detail how we have address Dr. Ford's comments, where we have made changes in our manuscript and explain why we respectfully disagree with a specific comment or criticism. Dr. Ford's comments are in **bold black text** and our responses are in blue italic text.*

The objective of the paper is to use uplift history derived from marine terraces and river profile analysis to study the timing and stages of fault growth and linkage (abstract and page 4 lines 17-20, for example) and to examine the behaviour of rivers in response to fault linkage. As presented in Figure 2, standard mechanical models for normal fault growth and linkage demonstrate uplift of the footwall on the two linking fault segments and subsidence in their hangingwalls. Because of the nature of coastal erosion, the southern Crete study integrates uplift data derived from marine terraces from the footwall of the Ptolemy fault with uplift in the hangingwall of the South Central Crete Fault (SCCF). In this case linking uplift rates and stream behaviour with fault mechanics theory is not straightforward and you need to be very clear and careful in your argumentation.

Dr. Ford is correct in that we are trying to assess the response of river profiles to temporal changes in rock uplift rate; however, our object is not to "study the timing and stages of fault growth and linkage". Instead, our objective is clearly stated in the final paragraph of the introduction (P. 4, lines 10 – 25). Two sentences that illustrate what our objectives are include: "In this study we seek to determine factors that control the evolution of mountain streams along a rapidly uplifting coastline from the island of Crete, Greece, and to assess the nature in which these streams record tectonic signals and how well they conform to predictions of stream-power incision models (c.f. Tomkins et al., 2003)." (P. 4 lines 10 – 12); and "We exploit fault mechanics theory that predicts a rapid increase in the rate of uplift in the vicinity of a fault linkage to establish a relative uplift history for the study area; first an early phase of uplift

consistent with growth of two isolated fault systems followed by a later phase related to the linkage and development of a new composite fault system (Gallen et al., 2014). We then use this natural experiment to assess the fluvial response to this step-change in uplift rate across the fault linkage zone.” (P. 4, lines 17 – 21).

We apologize for the misunderstanding based on the text in the abstract and have added the following sentence to the abstract to clarify the intent of our study: “We use this natural experiment to assess the response of river profiles to a temporal jump in uplift rate and to assess the applicability of the stream power incision model to this and similar settings.”

It appears that you are comparing the uplift history of the SCCF hangingwall marine terraces directly to footwall uplift on the Ptolemy fault.

Yes, we are comparing the river profile data to all of the independent measurements of local rock uplift rate from marine terraces, which includes the SCCF hanging wall and the Ptolemy fault footwall. This allows us to evaluate assumptions made in river profile analysis. We further use the independent evidence of recent fault linkage to assess the influence of a step change in rock uplift rate on river profile response.

A regional component of uplift of the island of Crete appears to be superimposed on vertical motions generated by fault activity, thus exaggerating footwall uplift on both faults (Fig. 1c). When did this regional uplift occur with respect to the fault history?

Based on the analysis presented in this study and previous work by Gallen et al. (2014), regional uplift has been active throughout the history of fault development, continues today and likely preceded fault initiation. Dr. Boulton had a similar comment regarding the relative uplift history as interpreted from river profile analysis. This is something that we address in the Discussion Section 5.3 “Normalized steepness index (k_{sn}) patterns and uplift history”. The last paragraph of section 5.3.1 “Along strike patterns” (P. 19, lines 1 – 12) reads as follows:

“In summary, the patterns of k_{sn} for different river reaches reflect a three phase uplift history. Starting with the oldest and moving forward in time, the upper most river reaches above generation-1 knickpoints are interpreted as recording a period of regionally low uplift rate (Fig. 6d). Intermediate river reaches follow an uplift pattern consistent with the pattern of displacement along two independent normal fault systems with a maximum uplift rate near the fault centers that then taper to minima at the fault tips (Fig. 6c). Normalized channel steepness values from the lower footwall reaches are consistent with footwall uplift following linkage of adjacent fault systems, as increased uplift rates occur near the site of fault linkage (Fig. 6b), while k_{sn} values from the hanging wall of the South-Central Crete fault are consistent with lower rates of net (secular + local) rock uplift due to slip on the fault (Fig. 6a). This history is consistent with the conceptual model presented in figure 2 and supports the findings of numerous other studies that show that river profiles are sensitive recorders of relative uplift histories (Snyder et al., 2000; Kirby and Whipple, 2001, 2012; Wobus et al., 2006; Whittaker et al., 2008; Boulton and Whittaker, 2009; Pritchard et al., 2009; Whittaker and Boulton, 2012; Perron and Royden, 2013; Royden and Perron, 2013; Goren et al., 2014; Whittaker and Walker, 2015).”

The observed net uplift in the hangingwall of the SCCF indicates that the regional component is greater than the hangingwall subsidence generated by the SCCF as the authors state in page 5, lines 30-33. So it must be a pretty substantial vertical motion! Can you quantify the regional uplift? This regional component should be removed before calculating D on the faults (see below).

We agree that there exists substantial regional vertical motion despite active extension in the upper crust. We have quantified the amount of vertical displacement in the absence of faulting and wrote a paper about it that was published in Earth and Planetary Science Letters in 2014 entitled “Active simultaneous uplift and margin-normal extension in a forearc high, Crete, Greece”. It is cited several times in this manuscript.

The regional signal of uplift does not need to be removed before calculating D because it is similarly effecting footwalls and hanging walls and D is a relative measure with respect to a specific datum, typically the fault trace. We address this comment in more detail below. If one were to remove the regional signal of uplift from the footwalls and hanging walls, the results would be the same as we have presented them.

Page 1, Line 16-17. ‘Fault mechanics predicts that when adjacent faults link into a single fault the uplift rate in the linkage zone will increase rapidly’. You need to specify that you are referring to footwall uplift. To improve clarity in your analyses of uplift a suggestion is to consistently specify whether you are referring to composite footwall uplift or the composite hangingwall uplift.

This is an excellent point. We have revised the above mentioned sentence to read as follows: “Fault mechanics predicts that when adjacent faults link into a single fault the uplift rate in footwalls of the linkage zone will increase rapidly.”

The data represented in Figure 1c (maximum footwall topography) is derived from the footwall of both faults and shows the classic bell shaped curves typical of two fault segments. As the profiles represent the footwall of both faults the SCCF would not occur between the two profiles as indicated on the graph. It is notable that the footwall uplift on the SCCF is twice that on the Ptolemy fault, implying that it a larger fault, with perhaps a longer history? The highest topography is further back from the fault also suggesting a longer history of uplift and erosion? Can you comment on this? Is the difference in fault size and age relevant for your interpretation of the river behaviour?

This is an interesting point, but is difficult to evaluate from topographic data alone. First, the Ptolemy fault is below sea level and is thus much longer than the coastline of the Ptolemy footwall (see figure 1a-inset). If the displacement on the Ptolemy fault is measured from the bathymetric trace of the fault D is approximately 2.5 km, similar to the SCCF footwall. However, using the total displacement as a proxy for fault age can be problematic as it assumes that the fault slip rates are the same, which may not be the case. The age of the fault is not important to our interpretations because the response time of the rivers is likely shorter than the age of the fault. Furthermore, we are only concerned with the more recent evolution of the fault system, specifically the transition from independent faults into a single linked structure. Because such an interpretation relies on many assumptions and is not central to the objectives of this study, we have respectfully decided to exclude discussion of this topic in the present manuscript.

The data in figures 1d (marine terrace correlations) and 3b (uplift rate from marine terraces) are derived from the footwall of the Ptolemy fault and the hangingwall of the South Central Crete Fault. The history of footwall uplift can therefore only be deciphered for the Ptolemy Fault. It is on this fault that you see the clear acceleration in uplift toward the relay zone. I am intrigued by the abrupt eastward termination of these footwall terraces along a NS line inland from stations 6-7. Can you comment on this? Is there a N-S fault here or is the map incomplete? This could be relevant for your interpretation.

The problem with the mapped extent of the terraces in figure 1b is an oversight on our part. The terraces are not preserved beyond this point, but we interpret that they terminate at the fault scarp. We have adjusted figure 6b to show that the terraces are inferred to stop at the fault trace.

The mismatch and incoherence in marine terrace behaviour between the two blocks that you discuss as unusual, is in my opinion, because you are passing eastward across the fault from uplifting footwall to subsiding hangingwall. The decrease in uplift toward the centre of the Dikti block is exactly what you would expect in the subsidence profile of a normal fault hangingwall (Fig. 3b). This also fits perfectly with the fault mechanics model predictions when combined with a regional uplift.

We are confused by what the reviewer is referring to, as we do not interpret the mismatch and incoherence in the marine terrace behavior between the two blocks as unusual. We agree with the reviewer's interpretation. We describe our interpretation explicitly in section 2.2 "Tectonic geomorphology of south-central Crete", which is based on Gallen et al. (2014). The latter half of section 2.2. is as follows:

"The eastern portion of the Asterousia Mountains is uplifting at eastward-increasing rates between 0.4-0.8 m kyr⁻¹ during the Pleistocene as part of the footwall of an offshore normal fault, known as the Ptolemy fault (Fig. 1). At the town of Tsoutsouros, the marine terraces are truncated by a major normal fault that extends on shore, known as the South-Central Crete fault (SCCF), which represents the onshore continuation of the Ptolemy fault (Fig. 1). East of Tsoutsouros the SCCF forms the onshore segmented range front of the Dikti Mountains. Pleistocene marine terraces offset by the SCCF at Tsoutsouros provide long-term average slip rates of ~ 0.35 m kyr⁻¹, while the terraces cut into the hanging wall of the SCCF record uplift rates of 0.1 – 0.3 m kyr⁻¹ (Gallen et al., 2014). The observation that terraces are uplifted in the hanging wall of the SCCF is of regional importance and signifies that geodynamic processes responsible for regional uplift of the island of Crete are outpacing upper crustal thinning accommodated by motion on active extensional faults. Gallen et al. (2014) further interpret the Ptolemy and SCCF faults as previously independent growing fault systems that linked in the geologically recent past (< 1 Ma) and that the Tsoutsouros area represents the linkage zone between the two fault systems. This interpretation is based on the observations that the long-term displacement history inferred from swath topographic profiles that are parallel to the footwall mountain ranges are consistent with displacement on two isolated fault systems (Fig. 1a, c), while marine terraces that are inferred to have formed at ~ ≤ 400 kyrs are now offset by a single linked fault (Fig. 1d)."

P5, section 2.2. I see no evidence for horst structures on the maps you present, ie. I cannot see the conjugate north dipping faults on the north side of the Asterousia and Dikti mountains that would be necessary for these to be horst structures. Your maps indicate that these mountains represent fault block crests in the footwalls of the two studied faults. This would indeed have to be the case for you to apply the fault growth model presented in Figure 2.

We apologize for this oversight. The active normal faults on the north side of the Asterousia are well documented and we have added these structures to figure 1. Normal faults are present on the north side of the Dikti Mountains as well, but are less well studied. The spatial extent of the maps shown in figure 1 do not cover the faults on the north side of the Dikti and are thus not included in this figure.

Page 13, 4.1: Section 5.1 Calculation of D/L ratio (figure 1). You use maximum topography in the footwall of the two faults as a proxy for displacement and this to calculate D/L ratios for the faults. However observed footwall relief represents only footwall uplift, here combined with the regional uplift component. The throw or vertical component of fault displacement is the sum of footwall uplift

plus hangingwall subsidence, a value that you probably don't have, as is often the case. The ratio of long-term footwall uplift to hangingwall subsidence (U:S) has been estimated in various rifts (e.g. Basin and Range; Stein et al 1988) and by elastic dislocation modelling of uplifted terraces in rifts such as the Gulf of Corinth (King, 1998; Armijo et al. 1996). These studies propose U:S values ranging from 1:6 to 1:1 (see McNeill and Collier 2004, for example). If no local constraints are available most authors use values for U:S of 1:2 or 1:3 to derive a reasonable estimate of throw. The displacement along the fault is then calculated assuming a reasonable dip for the normal fault. However you have the additional problem of having to remove the regional uplift component before doing this calculation. Why is D for the Ptolmey fault measured with respect to sea level while D for the South Central Crete fault is measured with respect to a higher reference level (200m above sea level?)?

There is a lot to address in this comment, so we will touch on one topic at a time. However, it is important to note that we detail our procedure and terminology in section 2.4 "Relationships between fault growth, linkage and footwall uplift patterns". Furthermore, anyone familiar with the literature described in section 2.2 will be aware of many of the details laid out below.

The basis for our D/L measurements is derived from the seminal work on this topic by Dawers et al. (1993). We are effectively calculating a throw measurement with respect to some datum, which is typically taken as the fault trace or some other horizontal datum. This is traditionally how these measurements are made, so we are simply using the same terminology and procedures as previous researchers.

Dawers et al. (1993), demonstrated that because the displacement profiles of normal faults are self-similar, D/L ratios will not change so long as they are measured from a common horizontal reference datum. This is important because it means that so long as one measures the length and displacement from the same horizontal reference datum, the D/L measurements will be the same for a given fault. The reference datum is typically chosen as approximately the elevation of the fault trace, but sea level will work just as well. Case in point, the D/L ratio of the Ptolmey fault taking at sea level is ~3.5%, while if it is measured from the bathymetric trace, where D is approximately 2.5 km and L is about 70 km, the D/L ratio is similar, 3.6%.

Furthermore, this means that so long as there isn't differential regional uplift across the footwall and hangingwall sides of a fault the D/L ratio measured from a common horizontal reference will remain unaffected. In other words, because this is a relative measure and we have no evidence to indicate that the regional signal of uplift varies over the spatial scale considered in this study, the regional uplift will not affect our D/L measurements. We measure the length and displacement of the SCCF from the fault trace (~200 m above sea level) because we don't know what the fault length is at sea level because it is below the surface.

The reviewer seems to be conflating displacement-to-length ratios with ratios of footwall uplift to hanging wall subsidence in part of this comment. We are basing our comparison of D/L ratios to the global compilation of such measurement in Schlische et al. (1996). At any rate, in Gallen et al. (2014) we did calculate the ratio of footwall uplift to hanging wall subsidence from our marine terrace survey as ~ 3:1.

As regards the river profile analysis, it is important to emphasise in your interpretations that the western rivers cut across only the footwall of the Ptolemy fault while the eastern rivers cut across both the footwall and hangingwall of the SCC fault. The regional component of uplift should not be forgotten in the interpretation of these rivers.

We agree and are careful to identify when we are referring to the footwall or hanging wall of the South Central Crete fault. For example, see figures 5, 6 and 10 and their corresponding captions.

We also agree that one should not ignore the regional uplift signal and we do not ignore the regional uplift signal in the study. The regional signal of uplift should effect our entire study area similarly based on the spatial scale that we are investigating. The majority of the interesting spatial and temporal changes in uplift rate are reflected nicely in the river profile geometries, as noted in figures 4-6, and these are best explained by motion on the Ptolemy and South Central Crete faults. If the regional signal of uplift were to perturb the river profiles this would be detected in the river profiles, unless obscured by the changes in uplift rate associated with faulting.

I conclude by requesting that the authors clarify the complexity of the structural framework of their study area, the true structural position of data sets, and the terminology used. This will probably have an impact on the presentation of interpretation of tectonic signals in river profiles.

We thank Dr. Ford for taking the time to review our manuscript and would like to point out that many of the comments/criticisms that were raised were already addressed and discussed in the text. Furthermore, many of the details on the structural geology are provided in our previous study of Crete by Gallen et al. (2014). We dedicate a great deal of text summarizing the details of that investigation because it forms the foundation for this study. In the end, it is our opinion that the comments provided by Dr. Ford only lead to minor, clarifying modifications to the figures and text and do not require reanalysis or interpretation of our data; our conclusions still hold.

River profile response to normal fault growth and linkage: An example from the Hellenic forearc of south-central Crete, Greece

Sean F. Gallen¹, Karl W. Wegmann²

¹Geological Institute, Swiss Federal Institute of Technology (ETH), Zürich, Switzerland, 8092

5 ² Department of Marine, Earth and Atmospheric Sciences, North Carolina State University, Raleigh, NC, USA, 27695

Correspondence to: Sean F. Gallen (sean.gallen@erdw.ethz.ch)

Abstract. Topography is a reflection of the tectonic and geodynamic processes that act to uplift the Earth's surface and the erosional processes that work to return it to base level. Numerous studies have shown that topography is a sensitive recorder or tectonic signals. A quasi-physical understanding of the relationship between river incision and rock uplift has made the analysis of fluvial topography a popular technique for deciphering relative, and some argue absolute, histories of rock uplift. Here we present results from a study of the fluvial topography from south-central Crete demonstrating that river longitudinal profiles indeed record the relative history of uplift, but several other processes make it difficult to recover quantitative uplift histories. Prior research demonstrates that the south-central coastline of Crete is bound by a large (~100 km long) E-W striking composite normal fault system. Marine terraces reveal that it is uplifting between 0.1 – 1.0 mm yr⁻¹. These studies suggest that two normal fault systems, the offshore Ptolemy and onshore South-Central Crete faults linked together in the recent geologic past (Ca. 0.4 – 1 Myrs bp). Fault mechanics predicts that when adjacent faults link into a single fault the uplift rate in footwalls of the linkage zone will increase rapidly. We use this natural experiment to assess the response of river profiles to a temporal jump in uplift rate and to assess the applicability of the stream power incision model to this setting. Using river profile analysis we show that rivers in south-central Crete record the relative uplift history of fault growth and linkage, as theory predicts that they should. Calibration of the commonly used stream power incision model shows that the slope exponent, n , is ~ 0.5, contrary to most studies that find $n \geq 1$. Analysis of fluvial knickpoints shows that migration distances are not proportional to upstream contributing drainage area, as predicted by the stream power incision model. Maps of the transformed stream distance variable, χ , indicate that drainage basin instability, drainage divide migration and river capture events complicate river profile analysis in south-central Crete. Waterfalls are observed in southern Crete and appear to operate under less efficient and different incision mechanics than assumed by the stream power incision model. Drainage area exchange and waterfall formation are argued to obscure linkages between empirically derived metrics and quasi-physical descriptions of river incision, making is difficult to quantitatively interpret rock uplift histories from river profiles in this setting. Karst hydrology, break down of assumed drainage area-discharge scaling and chemical weathering might also contribute to the failure of the stream power incision model to adequately predict the behavior of the fluvial system in south-central Crete.-

1 Introduction

It has long been argued that landscapes are archives of spatial and temporal trends of tectonic activity (Davis, 1899; Penck and Penck, 1924). Theoretical advances and empirical datasets have furthered our understanding of how rivers react to changing boundary conditions (Howard et al., 1994; Whipple and Tucker, 1999; Tucker and Whipple, 2002). Through these studies it has been shown that landscapes adjust to tectonic, climate or topological (e.g. stream capture) perturbations over $10^4 - 10^6$ yr time scales (Snyder et al., 2000; Crosby and Whipple, 2006; Berlin and Anderson, 2007; Hilley and Arrowsmith, 2008; Val et al., 2014; Willett et al., 2014). Bedrock river systems have been shown to be particularly sensitive indicators of changing boundary conditions, define the relief structure in mountains (Whipple et al., 1999), and transmit signals of base level fall upstream throughout the landscape (Merritts and Vincient, 1989; Pazzaglia et al., 1998; Whipple and Tucker, 1999; Snyder et al., 2000). Transient landscapes, those landscapes in the process of adjusting to newly imposed boundary conditions, provide the opportunity to interrogate topography for information regarding the timing and magnitude of landscape adjustment to external forcing. As such, studies of transient landscapes have received considerable attention over the past 15 years and serve as a cornerstone of modern tectonic geomorphology studies (Kirby and Whipple, 2001, 2012; Wobus et al., 2006; Pritchard et al., 2009; Perron and Royden, 2013; Royden and Perron, 2013; Gallen et al., 2013; Goren et al., 2014). Most studies that seek to extract tectonic and climate signals from fluvial landscapes rely on river profile analysis; the interpretation of the geometry of river longitudinal profiles, mostly in the context of the detachment-limited river incision model (Howard et al., 1994; Whipple and Tucker, 1999). Beyond the river basin(s) being studied, understanding the response of erosional landscapes to tectonic, climate or topological perturbations is essential for interpreting stratigraphic records in sedimentary basins (e.g. Armitage et al., 2011), understanding the timescales of orogenic buildup and decay (Whipple, 2009), and is a compliment to deciphering the timing of molecular genetic variations in aquatic populations (e.g., Montgomery, 2000; Craw et al., 2008; Mackey et al., 2011).

The proposed role of bedrock rivers as a governor on landscape evolution in erosional settings has led to a concerted effort by the geomorphic community to identify, document and quantify controls on long-term bedrock river incision (Howard and Kerby, 1983; Howard et al., 1994; Whipple and Tucker, 1999; Sklar and Dietrich, 2004; Whipple, 2004; Whipple et al., 2013; Lague, 2014). Our best understanding of controls on long-term bedrock river incision has mostly been gleaned from studies of landscapes thought to be at or near steady-state conditions, where rates of local rock uplift and erosion are balanced at geologically meaningful time scales ($> 10^4$ yrs) (Ouimet et al., 2008; DiBiase et al., 2010). These studies illustrate a systematic and monotonic increase in erosion rate with metrics based on stream power or shear-stress models or river incision, but it is important to recognize that many different river incision models (detachment-limited, transport-limited, or sediment-flux dependent) make similar predictions of river morphology and erosion rate at steady-state (Tucker and Whipple, 2002; Tucker, 2004; Gasparini et al., 2006). However, studies of river incision in transient landscapes show a much more complicated story where rivers exhibit changes in channel geometry, sediment flux and grain size, and the amount of bed cover and roughness that singularly or collectively may affect local rates of incision (Sklar and Dietrich,

2004; Finnegan et al., 2005, 2007; Amos and Burbank, 2007; Whittaker et al., 2007; Cook et al., 2013; Attal et al., 2015; Shobe et al., 2016). These responses to transient river incision will affect the pace and style of landscape adjustment to a base level fall event, as predicted by different classes of incision models (Tucker and Whipple, 2002; Tucker, 2004; Gasparini et al., 2006).

5 Despite the ability of existing river incision models to capture some of the range of the observed behavior of transient river systems, they often fail to describe some important and commonly observed aspects of such systems. In order to make the physical world more tractable, most incision models assume that (1) sediment flux scales with drainage area (Sklar and Dietrich, 2004; Lamb et al., 2007), that (2) the incision process in oversteepened reaches (e.g. waterfalls) is the same as in lower gradient reaches, and (3) that contributing drainage area remains fixed in space and time. ~~Recent studies by Attal et al. (2015) and Shobe et al. (2016) explore the role that spatially variable sediment flux and caliber has on incision processes in transient landscapes. These~~ Several recent studies highlight observations of spatially heterogeneous changes in the flux and size of sediment delivered to the channel in transient landscapes that might be missed by simple expressions of sediment flux that are only scaled to local channel slope and drainage area, a proxy for discharge. Attal et al. (2015) document that hillslope steepness and erosion rates are positively correlated to changes in sediment grain size on hillslopes and along the adjoining river channel bed in catchments undergoing transient adjustment. ~~For example,~~ Shobe et al. (2016) suggested that enhanced delivery of locally-derived hillslope boulders to a channel can impact bed cover and shear stresses such that river incision can be slowed in steeper reaches, counter to the assumptions of a straightforward stream power approach to determining incision rates. Brocard et al. (2016) argue that in regions with highly weathered uplands, where only fine grained sediment is produced during surface erosion, knickpoint migration efficiency may be reduced, resulting in downstream reaches over-steepened due to a deficiency of bedload tools.

When river reaches become over-steepened and waterfalls form, the relative importance of incision mechanisms assumed by a stream-power based incision model, such as abrasion and plucking (e.g. Whipple et al., 2000), give way to processes such as plunge pool drilling, slope undercutting and rock toppling (Lamb, et al., 2007; Lamb and Dietrich, 2009; Haviv et al., 2010). It has been argued that these over-steepened sections of rivers may act to enhance or inhibit river incision, as well as to obscure tectonic and climatic information that may be encoded in river systems (Haviv et al., 2006; Lamb et al., 2007). For example, DiBiase et al. (2015) showed that the development of waterfalls associated with transient slope-break knickpoints (Kirby and Whipple, 2012) related to increases in uplift rate observed along Big Tujunga creek in the San Gabriel Mountains of California generally acted to slow knickpoint retreat rates at higher elevations in the catchment relative to predictions from detachment-limited stream power models, while in contrast some low elevation waterfalls appear to travel faster than theoretical expectations.

River networks are not static topographic features. Instead, they reshape themselves based on changing boundary conditions until gravitationally-driven equilibrium is achieved between conjoined catchments (Bishop et al., 1995; Prince et al., 2010; 2011; Willett et al., 2014). This spatial rearrangement is driven by slow progressive divide migration and by

discrete river capture events (Prince et al., 2010; 2011; Val et al., 2014; Willett et al., 2014). Most analyses of river networks however operate under the implicit assumption that drainage area is fixed in space and time. In regions with variable climate and changing uplift rates it is reasonable to assume that drainage network patterns will adjust to attain a new equilibrium (Willett et al., 2014). Drainage area exchange between adjacent catchments during adjustment to new boundary conditions will affect the basin response time and fluvial incision rates. This concept is best understood in the context of river incision models that assume incision rate is proportional to drainage area, in which many of the parameters used to model incision are assumed to scale in some way with drainage area (e.g. discharge, sediment flux, river width, local channel slope). All else being equal, a loss of drainage area will increase response times and decrease river incision rates; a gain in drainage area will reduce response times and accelerate river incision rates. These changes in drainage area complicate interpretations of changes in tectonic and climate signals preserved in river networks because river profile analysis operates under the implicit assumption that the drainage network has remained static over time.

In this study we seek to determine factors that control the evolution of mountain streams along a rapidly uplifting coastline from the island of Crete, Greece, and to assess the nature in which these streams record tectonic signals and how well they conform to predictions of stream-power incision models (c.f. Tomkins et al., 2003). The study site consists of 21 catchments that drain the footwalls of active extensional faults that form the range front of the Asterousia and Dikti mountains (Fig. 1). Previous studies of Pleistocene marine terraces document mid-to-late Quaternary uplift rates along the coastline in the Asterousia Mountains, demonstrating that the normal faults that bound these two ranges linked prior to the mid Pleistocene (Gallen et al., 2014). Topographic evidence of a long-term slip-deficit in the linkage zone between the two fault systems suggests that linkage occurred in the recent geologic past (Gallen et al., 2014). We exploit fault mechanics theory that predicts a rapid increase in the rate of uplift in the vicinity of a fault linkage to establish a relative uplift history for the study area; first an early phase of uplift consistent with growth of two isolated fault systems followed by a later phase related to the linkage and development of a new composite fault system (Gallen et al., 2014). We then use this natural experiment to assess the fluvial response to this step-change in uplift rate across the fault linkage zone. We perform analytical and statistical analyses of river profile segments and knickpoints to assess the ability of the detachment-limited river incision model to predict observations. We discuss the potential influence of lithology, waterfalls and drainage area exchange on the evolution of these river systems with broader implications for extracting tectonic and climate signals from fluvial topography.

2 Background

2.2 Geologic and Tectonic setting of Crete

The island of Crete occupies a rapidly extending and uplifting forearc high above the Hellenic Subduction zone (Angelier et al., 1982; Gallen et al., 2014). The Hellenic subduction zone currently accommodates $\sim 35 \text{ mm yr}^{-1}$ of motion

between the down-going African and overriding Eurasian plates (McClusky et al., 2000; Reilinger et al., 2006). A well-defined Benioff seismic zone illuminates the Hellenic subduction interface as it dips northward at 10° to 15° , reaching depths of 35 to 45 km beneath Crete (Papazachos et al., 1996, 2000; Knapmeyer, 1999). The crust underlying Crete is composed of compressional nappes that were emplaced between about 35 to 15 Ma (Jolivet and Brun, 2010 and references therein). Some of the nappe units were subducted and underplated between 24 to 19 Ma (Theye and Seidel, 1993) and rapidly exhumed by ~ 18 to 16 Ma (Thomson et al., 1998; Brix et al., 2002; Rahl et al., 2005; Marsellos et al., 2010). Southward extension of the Aegean domain initiated at approximately 23 Ma, and since the Miocene horizontal brittle extension has dominated deformation in the upper crust (Angelier et al., 1982; Bohnhoff et al., 2001; Fassoulas 2001; van Hinsbergen and Schmid, 2012). Brittle extension continues today in the vicinity of Crete as noted by numerous active roughly N-S and E-W striking faults (Fassoulas et al., 1994; Bohnhoff et al., 2005; Caputo et al., 2006; Mouslopoulou et al., 2011, 2014; Gallen et al., 2014). On Crete, extensional faults cut the structural nappe units and opened basins that filled with Neogene marine sediments that are now exposed 100's of meters above sea-level, indicating long-lived uplift of the island (Meulenkamp et al., 1994; van Hinsbergen and Meulenkamp, 2006; Zachariasse et al., 2008). Pleistocene and Holocene paleo-shoreline markers found 10's to 100's of meters above modern sea level along the coastlines of Crete document continued uplift of the island throughout the Quaternary (Flemming, 1978; Angelier, 1979; Pirazzoli et al., 1982; Meulenkamp et al., 1994; Kelletat, 1996; Wegmann, 2008; Strasser et al., 2011; Strobl et al., 2014; Gallen et al., 2014; Tiberti et al., 2015; Mouslopoulou et al., 2015).

2.2 Tectonic geomorphology of south-central Crete

The Asterousia and Dikti mountains that currently define the south-central coastline of Crete are horst structures embedded in the Hellenic forearc high (Fig 1). The horsts are primarily composed of Mesozoic carbonates and interbedded mud and sandstones with lesser amounts of ophiolite and Neogene turbidites (Fig. 1). Gallen et al. (2014) mapped Pleistocene marine terraces and used optically stimulated luminescence (OSL) dating of deposits and correlations to the mid-to-late Quaternary sea level curve to derive rock uplift histories across an ~ 100 km stretch of the Cretan coastline (Fig. 1). The authors showed that the marine terraces are deformed and cut by two major extensional faults that extend onshore near the towns of Lentas and Tsoutsouros (Fig. 1). The eastern portion of the Asterousia Mountains is uplifting at eastward-increasing rates between $0.4\text{--}0.8\text{ m kyr}^{-1}$ during the Pleistocene as part of the footwall of an offshore normal fault, known as the Ptolemy fault (Fig. 1). At the town of Tsoutsouros, the marine terraces are truncated by a major normal fault that extends on shore, known as the South-Central Crete fault (SCCF), which represents the onshore continuation of the Ptolemy fault (Fig. 1). East of Tsoutsouros the SCCF forms the onshore segmented range front of the Dikti Mountains. Pleistocene marine terraces offset by the SCCF at Tsoutsouros provide long-term average slip rates of $\sim 0.35\text{ m kyr}^{-1}$, while the terraces cut into the hanging wall of the SCCF record uplift rates of $0.1\text{--}0.3\text{ m kyr}^{-1}$ (Gallen et al., 2014). The observation that terraces are uplifted in the hanging wall of the SCCF is of regional importance and signifies that geodynamic processes responsible for regional uplift of the island of Crete are outpacing upper crustal thinning accommodated by motion on active extensional

faults. Gallen et al. (2014) further interpret the Ptolemy and SCCF faults as previously independent growing fault systems that linked in the geologically recent past (< 1 Ma) and that the Tsoutsouros area represents the linkage zone between the two fault systems. This interpretation is based on the observations that the long-term displacement history inferred from swath topographic profiles that are parallel to the footwall mountain ranges are consistent with displacement on two isolated fault systems (Fig. 1a, c), while marine terraces that are inferred to have formed at $\sim \leq 400$ kyrs are now offset by a single linked fault (Fig. 1d).

2.3 Climatic and Geomorphic setting

The island of Crete is in the Mediterranean climate zone, with cool moist winters and warm dry summers. Mean annual precipitation is ~ 650 mm yr^{-1} , locally increasing to > 1000 mm in the mountain ranges due to orographic lifting (Rackham and Moody, 1996). Average temperatures are 27°C in summer and 12°C in winter, and winds prevail from the north to northwest year-round, but are strongest during the summer months. Climate in the Eastern Mediterranean is generally drier during glacial or stadial intervals relative to the present-day, whereas interstadials are thought to be analogous to today's climate (e.g., Tzedakis, 2009). Sediment production is inferred to be higher relative to the modern during much of the Late Quaternary, especially during climatic transitions that force variations in hillslope vegetation communities, as evidenced by available geochronology for large alluvial fans along the south coast (e.g., Pope et al., 2008, 2016; Wegmann, 2008; Gallen et al., 2014).

Most of the rivers draining the Asterousia and Dikti Mountains are ephemeral. The geomorphic system in South-Central Crete is presently supply-limited; most channel beds have a thin alluvial cover with local patches of exposed bedrock and a general absence of floodplains and Holocene terraces, except along the lower coastal zones where larger rivers discharge into the sea. Where rivers cut across the Neogene sedimentary and Mesozoic sedimentary and ophiolite units the dominant mode of river incision occurs by physical processes such as abrasion and plucking of the underlying bedrock (e.g., Whipple et al., 2000, 2013; Whipple, 2004). Valleys cut into these units are generally wide and V-shaped, hillslopes are at or near threshold gradients, and hillslope sediment transport is primarily by shallow landsliding. In contrast, hillslopes underlain by Mesozoic carbonates exhibit shallow landsliding of colluvial material detached from the local bedrock by dissolution and/or physical weathering. Rock falls are common where locally-steepened carbonate hillslope and river canyon reaches exist. Chemical dissolution appears to be an important mass-transport process in the carbonate units, evidenced by the development of narrow slot canyons and karst drainage observed in many places throughout Crete.

2.4 Relationships between fault growth, linkage and footwall uplift patterns

Fault system properties including length, width, and displacement often follow quasi-universal scaling relationships (Walsh and Watterson, 1988; Cowie and Scholz, 1992b; Dawers et al., 1993; Nicol et al., 1996; Schlische et al., 1996; Gupta and Scholz, 2000). For example, globally compiled datasets of fault length (L) and maximum fault displacement (D_{max})

exhibit a linear relationship between these two parameters where D_{\max} is consistently $\sim 3\%$ of fault length (Walsh and Watterson, 1988; Cowie and Scholz, 1992a,b; Dawers et al., 1993; Schlische et al., 1996; Manighetti et al., 2001). These findings have led to models whereby single isolated faults grow through repeated earthquakes in a self-similar fashion; propagating laterally at their tips while accumulating displacement maxima near their centers (Drawers et al., 1993).

5 Displacement profiles often reveal the history of fault growth and linkage for active fault zones (Fig. 2; Anders and Schlische, 1994; Dawers and Anders, 1995; Gupta and Scholz, 2000; Manighetti et al., 2001, 2005; Hetzel et al., 2004). When adjacent faults begin to overlap their stress fields interact, causing their displacement profiles to temporarily deviate from that which is predicted for a singular fault (Fig. 2). Once mechanical linkage of overlapping faults is accomplished, the composite fault will begin to recover unrealized displacement, and the displacement profile will return to roughly the same

10 pattern as predicted for a single isolated fault (Fig. 2; Cartwright et al., 1995; Cowie and Roberts, 2001).

Researchers have exploited these evolutionary characteristics of normal fault systems to assess the geomorphic response to step changes in the rate of local rock uplift (Boulton and Whittaker, 2009; Whittaker and Boulton, 2012; Whittaker and Walker, 2015; [Kent et al., 2016](#)). Following these previous studies and based on the observation that the Ptolemy and South-Central Crete faults linked in the geologically recent past (< 1 Ma), we infer that along the Tsoutsouros

15 section of the fault uplift rates increased rapidly following linkage. Support for this inference comes from the mismatch in the mid-to-late Quaternary displacement pattern from marine terraces and the long-term displacement pattern observed in the present-day topography (Fig. 1). We use this site of geologically recent fault linkage to explore the landscape response to a step change in tectonic forcing and to test the ability of the stream power incision model to predict the response of rivers to tectonic perturbations.

20 2.5 River profile analysis

The steepness of bedrock river channels can be used to infer rock uplift or erosion rates across a landscape. Functional relationships between channel steepness and erosion rate have been empirically defined for a variety of geological settings where sufficient data exist (Safran et al., 2005; Harkins et al., 2007; Ouimet et al., 2009; DiBiase et al., 2010; Miller et al., 2013; Harel et al., 2016). A theoretical explanation of the relationship between river channel steepness

25 and erosion rate can be described using what is commonly referred to as the stream power incision model (Howard and Kerby, 1983; Howard, 1994).

Detachment-limited river incision, E , into bedrock is typically modeled as a function of upstream contributing drainage area and channel gradient and, when combined with mass-conservation, can be expressed as,

$$\frac{dz}{dt} = U - E = U - KA^mS^n \quad (1)$$

30 where dz/dt is the change in elevation of the channel bed with respect to time, U is rock uplift rate relative to a fixed base level, A is the upstream drainage area, S is local channel slope, K is a dimensional coefficient that incorporates variables

dependent on incision process, substrate, climate and hydrology of erosion (e.g. Whipple, 2004), and m and n are positive constants that depend on basin hydrology, channel geometry, and erosion processes (Howard et al., 1994; Whipple and Tucker, 1999; Whipple et al., 2000). Under steady-state conditions, where incision rate and rock uplift rate are equal, $dz/dt = 0$, Eq. (1) can be solved for the equilibrium channel slope at a given drainage area:

$$5 \quad S = (U/K)^{1/n} A^{-(m/n)} \quad (2)$$

Equation 2 predicts a power-law relationship between channel gradient and drainage area that is often observed in landscapes and has the same form as the empirically derived scaling relationship referred to as Flint's law (Flint, 1974):

$$S = k_s A^{-\theta} \quad (3)$$

Where k_s describes channel steepness and θ represents the concavity of the river channel, which are referred to as the channel steepness index and the channel concavity index, respectively (Snyder et al., 2000). The benefit of Eq (3) is that the stream profile parameters of k_s and θ can be readily estimated by a linear regression of $\log S$ and $\log A$ (Kirby and Whipple, 2012).

The form of Eq (2) is comparable to that of Eq (3) such that:

$$k_s = (U/K)^{1/n} \quad (4)$$

$$15 \quad \theta = m/n \quad (5)$$

Assuming steady state conditions, erosion, E , can be substituted for the uplift term, U , in Eq (4), thus defining the relationship between the channel steepness index and erosion rate (Kirby and Whipple, 2001).

Theory and empirical observations show that θ is insensitive to changes in rock uplift rate or erosion rate, while k_s is sensitive to such changes (Whipple and Tucker, 1999; Snyder et al., 2000; Kirby and Whipple, 2012). Nonetheless, k_s will covary with θ making it difficult to compare channel steepness indices from drainage basins with different concavities. To avoid this complication and in order to attempt to isolate only the influence of tectonics and rock erodibility on river profile morphology a reference concavity, θ_{ref} , is often used to remove the effects of concavity on the steepness index by deriving a normalized steepness index, k_{sn} (Wobus et al., 2006; Kirby and Whipple, 2012). From theory θ should vary between ~0.3 to 0.7, and many empirical studies find that θ is around 0.45 for most river profiles near equilibrium or graded conditions (Snyder et al., 2000; Wobus et al., 2006; Kirby and Whipple, 2012). Researchers generally use a reference concavity of ~0.45 to calculate the normalized steepness index as a baseline for comparison for k_{sn} among different studies; alternatively, a reference concavity for a study area can be empirically determined as the regional mean concavity observed from relict (upstream from slope-break knickpoints) channel reaches.

The link between stream-power theory and Flint's law is useful because k_s (or k_{sn}) and θ can be estimated by logarithmic regression of local channel slope versus upstream contributing drainage area from data easily extracted from digital elevation models (Wobus et al., 2006). However, this approach introduces considerable noise into the data by taking the derivative of elevation with respect to channel distance, and thus making it sometimes difficult to isolate more subtle signals of interest. In an effort to reduce noise in river profile analysis Perron and Royden (2013) introduced the integral approach, which is more commonly called χ -analysis, which relies on a transformation of the horizontal coordinate for a river profile from distance to χ , where χ is an integral quantity with units of length. Separating variables in Eq (2), assuming U and K are spatially invariant, and integrating yields:

$$z(x) = z(x_b) + \left(\frac{U}{K}\right)^{\frac{1}{n}} \int_{x_b}^x \frac{dx}{A(x)^{m/n}} \quad (6)$$

Where z is elevation and x_b is base level. The trailing term on the right-hand side of the equation is unitless. Therefore, a reference drainage area A_o is introduced such that:

$$z(x) = z(x_b) + \left(\frac{U}{KA_o^m}\right)^{\frac{1}{n}} \chi \quad (7)$$

Where:

$$\chi = \int_{x_b}^x \left(\frac{A_o}{A(x)}\right)^{m/n} dx \quad (8)$$

Equation 7 is convenient because it has the form of a line where z is the dependent variable, χ is the independent variable, $z(x_b)$ is the y-intercept and $\left(\frac{U}{KA_o^m}\right)^{\frac{1}{n}}$ is the slope. Plots of χ and z are referred to as χ -plots. It is important to recognize that when A_o is assumed to be 1 the slope in a χ -plot is the same as k_{sn} from slope-area analysis. Alternatively, if A_o is a value other than unity, simply multiplying the slope of a χ -plot by $A_o^{-m/n}$ will give k_{sn} . Because A_o is an arbitrarily selected value, we suggest always using a value of 1 for A_o in an attempt to standardized χ -plots and ensure that the slope of the χ -plot can be directly interpreted in terms of the commonly used channel metric k_{sn} .

Based on Eq. (2), a river will respond to a change in rock uplift rate by steepening its gradient, while its concavity will remain largely unaffected (Snyder et al., 2000). Changes in channel gradient in response to a temporal change in rock uplift will initiate at the river channel mouth and progressively propagate ~~headword~~ headward until the river gradient has equilibrated to the new uplift regime (Fig. 2c; Whipple and Tucker, 1999). The signal of a change in the rate of uplift is transmitted upstream through the propagation of a knickpoint, a convex-upward reach in an otherwise concave-upward river longitudinal profile (Fig. 2c; Whipple and Tucker, 1999). The knickpoint represents the mobile boundary between the “relict” portion of the landscape unaware of a change in rock uplift rate above the knickpoint and the part of the landscape that is adjusted or adjusting to the newly imposed uplift rate below the knickpoint. In such cases, knickpoints are identified

as breaks in the logarithmic regression of local channel slope versus contributing drainage area, or a break in slope between two linear segments in a χ -plot (Fig. 2c). The channel steepness indices for the river reaches above and below the knickpoint represent the relative change in the rate of uplift. Thus if fluvial knickpoints are present, temporal changes in the rate of rock uplift can be inferred from analysis of river profiles (e.g. Miller et al., 2012, 2013). By determining the normalized steepness index, river channels can be used to infer and map the patterns of relative rock uplift rate in a given region, provided that lithologic contrasts and spatial variations in climate are marginal in relation to variations in rock uplift (Kirby and Whipple, 2001). Furthermore, if substrate erodibility is homogenous, χ represents a measure of the river response time to a state change in incision (uplift) rate that is manifested in the formation and presence of a knickpoint. Knickpoints from a common origin will travel at the same rate in χ transformed space. In other words, knickpoints found at approximately the same χ distance are related.

2.6 Drainage basin stability analysis

The transformed distance variable χ , has been shown to be a useful metric for interpreting the ‘dynamics’ or relative stability of catchment divides when plotted in map view (Willett et al., 2014). Analysis of χ -maps relies on the assumption that nearby channel heads in adjacent drainage basins will have the same χ value at equilibrium. Provided that nearby channel head elevations are roughly the same, which is a reasonable assumption, χ at a channel head represents a measure of the aggregate steepness of that channel. Lower χ at a channel relative to neighboring channel heads indicates a steeper and more rapidly eroding channel, whereas a higher χ value at a channel head relative to heads of neighboring streams suggests a gentler and more slowly eroding channel. All else being equal (e.g. uplift rate, bedrock erodibility, precipitation, etc.), local drainage divides should migrate in the direction of high χ simply because those basins are eroding more slowly than neighboring basins (Willett et al., 2014). By producing a map of river network χ the dynamics or stability of a drainage network is illuminated by simply quantifying contrasting χ values across local drainage divides.

3 Methods

3.1 Coastal uplift function

Derivation of coastal uplift rates is from data reported in Gallen et al. (2014) who used optically stimulated luminescence dating of the lowest elevation marine terraces to anchor the sequences to the mid-to-late Quaternary sea level curve. Based on stratigraphic and sedimentological evidence demonstrating that marine terraces in Crete are cut and deposited during transgression to sea level high stands and abandoned during sea level regression, Gallen et al. (2014) estimated the age of successively higher, older terraces by tying them to consecutively older sea level high stands (e.g. Merritts and Vincent, 1989).

Mid-to-late Quaternary uplift rates derived from dated marine terrace sequences were used to model uplift rates as a function of distance along the coast (Fig. 3). First, site-specific average uplift rates were determined using all terraces, geochronologic age constraints, and assigned ages for each site-specific flight of terraces reported in Gallen et al. (2014) (Fig. 3a). To determine Quaternary site average uplift rates, a Monte Carlo sampling approach was adopted to incorporate uncertainties from all measurements, and for each site five-thousand Monte Carlo-regression simulations were carried out. For each simulation random samples were drawn from a normal distribution based on the mean and 1- σ uncertainty of each measurement of terrace elevation, geochronologic age, and eustatic elevation at the time of terrace formation and used to calculate the total change in the elevation of each individual terrace. A linear regression through the theoretical terrace age versus total elevation change data was used to determine the average uplift rate (Fig 3a-inset). After the simulations were complete the mean and 2- σ uncertainties of the five-thousand theoretical uplift rate calculations were determined and used as the average uplift rate for each site.

Second, following a similar approach, Monte-Carlo simulations using five-thousand samples from the site average uplift rates along the Asterousia footwall and the Dikti hanging wall blocks of the SCCF were used to generate a model of Quaternary uplift rate as a function of distance along the coastline (Fig. 3b). For each fault block, a second-order polynomial regressions was used because it best approximates the observed pattern of uplift from the mapped terraces (Fig. 3b). The model of coastal Quaternary uplift rate was used to estimate the uplift rate at the outlets of the 21 catchments used in this study and was compared to the normalized channel steepness (k_{sn}) for lower segments of basin trunk channels.

3.2 Topographic analyses

A commercially available NEXTmap® world 30^m v2.0 30-m resolution digital elevation model (DEM) was used to analyze the topography of south-central Crete. The World 30 DEM is a preprocessed product that aggregates SRTM3 v2.1, ASTER v2.0 and GTOPO30 DEMs to improve the vertical accuracy, fill data voids, and reduce noise. All topographic analyses were conducted using the MATLAB software package TopoToolbox Version 2 (Schwanghart and Kuhn, 2010; Schwanghart and Scherler, 2014). Local slope was calculated from the filled DEM using a D8 algorithm (Fig. 4). Only basins draining ≥ 3 km² were analyzed because it has been shown that ephemeral streams, such as those on Crete, have difficulty responding to tectonic forcing at small drainage areas (e.g. Frankel and Pazzaglia, 2005). Twenty-one drainage basins were delineated and are labeled 1 to 21 from west to east (Fig. 4). There are 11 drainage basins in the Asterousia (1-11) and 10 in the Dikti (12-21). Basin size ranges from 4 km² to 96 km² with a mean and standard deviation of 18 ± 15 km². Trunk channels were extracted from each of the 21 basins and used for river profile analysis. The initiation points of the trunk channel for each drainage basin in the study was set at a basin area of 0.1 km², where we observed a break in local channel slope versus contributing drainage area. This scaling break is often interpreted as the along-channel transition from hillslope and landslide dominated erosional processes to the portion of the channel where erosion occurs primarily by fluvial processes (e.g. Montgomery and Foufoula-Georgiou, 1993; Wobus et al., 2006).

We used 1:50,000-scale geologic maps to evaluate the role of lithology on fluvial and drainage basin metrics (Fig. 1c; Greek Institute of Geology and Mineral Exploration, 1972; 1974; 1977; 1987). The geologic maps were digitized and rock types classified as Mesozoic mudstones and sandstones, Mesozoic carbonates, Neogene turbidites, or other, which comprises Mesozoic ophiolites, and Cenozoic phyllite-quartzite nappes, and Quaternary deposits that collectively comprise < 10 % of the study area (Figs. 1c). The geologic map was used to determine the rock types that each river flows over to visually assess for lithologic controls on river profile geometry.

3.3 River profile analysis

Trunk channels of the 21 river basins were extracted using TopoToolbox version 2 (Schwanghart and Kuhn, 2010; Schwanghart and Scherler, 2014) and a series of MATLAB functions for analyzing river profiles that are available from the corresponding author upon request. In our analysis, sinks in the raw DEM were filled and the resulting filled DEM was used to generate flow direction and flow accumulation grids. Trunk channels from the 21 river basins were extracted using a steepest-decent algorithm. Data extracted from the filled DEM and hydrologically modeled grids include elevation, distance from river mouth (in this case sea level), distance from channel head, and catchment area. The elevation data was smoothed using a 500 m moving window average to reduce noise in the river profiles.

Chi was calculated by integrating drainage area with respect to channel distance from sea level (base level) using Eq. (8) and an $A_o = 1$. Maps of k_{sn} for the entire stream network and for individual trunk-channel segments were generated by performing a linear regression through χ and the smoothed channel elevation data along 500 m channel segments. This approach is similar to that outlined by Wobus et al. (2006) who used power law regressions through slope verse drainage area data for river segments of a given size; however, the approach described here requires far less smoothing of the data, and is thus a more computationally efficient method for k_{sn} map generation.

Linear regressions through χ -elevation data were performed by manually selecting upper and lower bounds along individual channels. The 95 % confidence intervals for reported k_{sn} values are based on the uncertainties in slope of the regression due to scatter in the χ -elevation data. Channel segments were defined on the presence of knickpoints (breaks in channel slope in χ -plots). Knickpoints were defined at locations where k_{sn} decreased 25% relative to the next downstream channel segment. While this change in steepness is admittedly an arbitrary cut-off to identify knickpoints, it is sufficiently large to avoid including unwanted noise or DEM artifacts in our analysis and sufficiently small so that we could confidently identify inflection points in all river profiles analyzed in this study. We also defined some lower segments of river profiles based upon where known active faults cross the channels.

4 Results

4.1 Site average uplift rates and coastal uplift model

The site average uplift rates calculated for the Ptolemy footwall (Asterousia Mtns) range from 0.4 to 0.8 m kyr⁻¹ and generally increase from west to east (Fig. 3b). The 2nd-order polynomial fit to the site average uplift rates is significant at 95% confidence and describes the data well with an r^2 of 0.74. Site average uplift rates in the hanging wall of the South-Central Crete fault (Dikti Mtns) are between 0.15 and 0.35 m kyr⁻¹ with the lowest values found ~15 to 20 km from the western end of the fault block. The 2nd-order polynomial fit to the data is also significant at 95% confidence, but does not describe the data quite as well as the fit for the Ptolemy footwall with an r^2 of 0.56 (Fig. 3b). Nonetheless, the fit is reasonably good and follows a broad synclinal-style warping (Fig. 3b).

4.2 Basic topographic and fluvial metrics

Topography is generally steep at low elevations along the coast of the Asterousia Mountains and a major break in slope is noted ~ 2 – 3 km inland at elevations between 0.2 – 1 km (Fig. 4a). Topographic slope at high elevation in the Asterousia is typically < 20°, with the exception of some high elevation peaks (Fig. 4a). Steep topography in the Dikti footwall is observed at low elevations just to the north of the South-Central Crete fault and around high elevation peaks (Fig. 4a). Intermediate elevation low gradient topography is noted in many of the study catchments, such as catchment 13, 16, and 19. Slope gradients are generally low in the hanging wall of the South-Central Crete Fault (Fig. 4a).

Maps of normalized channel steepness index show patterns that mimic the distribution of local channel slopes (Fig. 4). The range front of the Asterousia has steep channels, many with k_{sn} values > 200 m^{0.9} (Fig. 4b). Channel segments at higher elevations between ~0.5 – 1 km elevation are low-gradient with k_{sn} values generally < 70 m^{0.9} (Fig. 4b). In the Dikti there is an abrupt change in k_{sn} across the South-Central Crete fault; k_{sn} values in the hanging wall downstream of the fault are mostly < 50 m^{0.9} and locally increase to > 100 m^{0.9} upstream of the fault (Fig. 4b). Rivers draining the high peaks of the Dikti have k_{sn} values between 100 – 150 m^{0.9}. Along the footwall of the South-Central Crete fault between the fault and the main drainage divide to the north, local river reaches have k_{sn} values that decrease to below 60 m^{0.9} (Fig. 4b).

4.3 Trunk channel knickpoints, longitudinal profiles, and the channel steepness index (k_{sn})

Trunk channel rivers in basins 1 – 9 and 12 in the Asterousia Mountains only contain a single knickpoint while trunk rivers in basins 10, 11, and 13 – 21 all contain two. With the exception of basin 12, those rivers that contain two knickpoints directly cross over the South-central Crete fault (Fig. 5a). Most knickpoints do not correlate with a specific mapped geologic contact and knickpoints are found in a variety of rock types, suggesting rock type isn't the dominant factor controlling knickpoint formation (Fig. 5b). All knickpoints are of the slope-break variety, indicating that their channels exhibit a sustained change in channel steepness above and below the knickpoints (Fig. 5c-e; Kirby and Whipple, 2012).

Knickpoints are classified as generation-1 or generation-2 based on landscape position, topographic characteristics, and relative changes in k_{sn} above and below the knickpoints (Fig. 5b). Generation-1 knickpoints are at higher elevations, relative to generation-2, and are found in all rivers except for basin 12 (Fig. 5b). Elevations for generation-1 knickpoints range from several hundred meters to > 1.5 km (Fig. 5b). Generation-2 knickpoint elevations are highest in the center of the Asterousia and Dikti footwalls and progressively decline in elevation away from the center of each fault block (Fig. 5b). Generation-2 knickpoints are only found along rivers that drain directly over the South-Central Crete fault (Basins 10 – 21) (Fig. 5a, b). These knickpoints are $< \sim 0.5$ km in elevation and most are found < 5 km from the river mouth (Fig. 5b). The knickpoint elevations are scattered but are generally higher near the eastern and western ends of the South-Central Crete fault (Fig. 5b).

The river longitudinal profiles are generally smooth and concave upward between convex-upward reaches (knickpoints) (Fig. 5b). Rock type is correlated with high frequency noise in the river profiles, but does not appear to have first-order control on river profile morphology. Most trunk channel segments between knickpoints are near linear on χ -elevation plots (Fig. 5c-e). This observation indicates that the reference concavity of 0.45 is a reasonable approximation of the concavity of south-coast Cretan rivers (e.g., Perron and Royden, 2013; Mudd et al., 2014). Some river profiles contain minor knickpoints that can be related to local changes in rock type, such as reach 2 along stream 10 (Fig. 5d). Some streams (13, 16, and 18) have low gradient reaches where they are incising fluvial and lacustrine deposits.

In figure 6 we plot k_{sn} versus west-to-east distance along the coast for different river segments. From base level, the lowest segment for each stream is the Ptolemy footwall in the Asterousia Mountains and the hanging wall of the SSCF along the Dikti range front (Fig. 6a). The lowest segment k_{sn} values are higher in the Asterousia footwall, with a mean of $220.8 \pm 107.5 \text{ m}^{0.9}$ (1σ), when compared to a mean k_{sn} of $51.8 \pm 27.4 \text{ m}^{0.9}$ measured from streams flowing across the SCCF hanging wall in front of the Dikti Mountains. Along the Ptolemy fault footwall, k_{sn} is low in the west and progressively increases to about kilometer 20 then declines slightly approaching the onshore exposure of the South-Central Crete fault (Fig. 6a). The pattern of k_{sn} along the hanging wall segment of the Dikti range is consistently low, but minor increases in k_{sn} are noted at the western and eastern ends of the fault block (Fig. 6a). k_{sn} values in the lowest reach of the Ptolemy and SCCF footwalls are similar, with a mean of $267.0 \pm 96.5 \text{ m}^{0.9}$ from the Dikti range (Fig. 6b). There are 12 rivers that contain two knickpoints (basins 10 – 21) and the reach between these knickpoints has a mean k_{sn} of $117.5 \pm 53.3 \text{ m}^{0.9}$, which is consistently lower than the next downstream segment (Fig. 6c). As a function of distance along the coastline, k_{sn} values for the middle footwall reach are low where the SCCF transitions offshore to the Ptolemy fault near Tsoutsouros (Fig. 6, kilometer 35 – 40). East of Tsoutsouros k_{sn} values progressively increases to about kilometer 55, then decline toward the eastern end of the SCCF block (Fig. 6c). The k_{sn} values for the upper footwall reaches of both mountain ranges are consistently low with a mean of $52.2 \pm 24.3 \text{ m}^{0.9}$ ($49.4 \pm 21.7 \text{ m}^{0.9}$ in the Asterousia and $55.7 \pm 26.6 \text{ m}^{0.9}$ in the Dikti, respectively) (Fig. 6d). No obvious along the coast pattern is observed from the Asterousia range front, but along the Dikti range k_{sn} is slightly elevated towards the middle of the footwall, with lower values at either ends of the fault block (Fig. 6d).

The lowest stream reaches along the Ptolemy footwall (Asterousia range front) and SCCF hanging wall (Dikti range front) should be the most sensitive to uplift, as is recorded by the Pleistocene marine terraces. We observe a monotonic increase in k_{sn} as a function of average modeled Quaternary uplift rate for the channel reaches that discharge to base level, but the relationship does not appear linear (Fig. 7). We fit the data with a power-law function, an unconstrained linear regression and a linear regression forced through the origin, all conducted using an orthogonal least-squares method. The data is best fit by a power-law function with an exponent of 0.55 (Fig. 7a). This regression is significant at > 99% confidence with an r^2 of 0.71. An unconstrained linear fit to the data is also significant at > 99% confidence and has an r^2 of 0.61 (Fig. 7b) a linear fit forced through the origin is significant at ~ 95% confidence but poorly describes the data with an r^2 of 0.4 (Fig. 7c). Channels are steeper when underlain by Mesozoic carbonates and mud-and-sandstones relative to channels underlain by Neogene turbidites and other rock units (Fig. 7). However, these differences coincide with a large change in uplift rate; the Mesozoic units are in the more rapidly uplifting Ptolemy footwall of the Asterousia range front, while the Neogene and other rock units are confined to the more slowly uplifting hanging wall of the SCCF along the Dikti range front (Fig. 6a, 7).

5 Discussion

5.1 Long-term versus intermediate vertical displacement patterns

The pattern of displacement and uplift rates recorded by the marine terraces is discordant with the long-term record of fault displacement as recorded by topography (Fig. 1, 3). The maximum envelope of topography is consistent with displacement along two independent fault systems; the offshore Ptolemy fault and the on-shore South-Central Crete fault (Fig. 1). The Asterousia range exhibits a roughly parabolic displacement profile approximated by maximum range elevations, and the displacement-to-fault length ratio is 0.034, consistent with expectations from fault mechanics theory (Fig. 1; Cowie and Scholz, 1992; Drawers et al., 1993; Schlische et al., 1996). Similarly, the topographic envelope of the Dikti range is triangular with a maximum in the middle that tapers to minimum values at the fault tips (Fig. 1). The Dikti range has a displacement-to-length ratio of 0.032. A topographic minimum is observed where the South-Central Crete fault takes a jog and extends offshore near the town of Tsoutsouros (Fig. 1). This topographic minimum is interpreted as a relict feature resulting from a long-term slip deficit (c.f. Cartwright et al., 1995) that has not yet been removed by slip accumulated on the relay between the two now-linked faults. We can roughly bracket the timing of fault linkage based on previous studies and observations. A minimum age of ~400 kyrs is obtained from the inferred age of the oldest marine terrace cut by the fault (Fig. 3a). A back-of-the-envelope maximum age for linkage of ~ 0.6 – 1.0 Ma is determined by dividing the modern height of the footwall above the fault trace in the linkage zone (500 – 600 m) by the footwall uplift rate in the linkage zone (0.6 – 0.8 mm yr⁻¹).

The pattern of deformation recorded by marine terraces in south-central Crete supports the interpretation of a linked normal fault bounding the Asterousia and Dikti mountains with the most rapid uplift for at least the last 400 ka observed near the linkage zone (Fig. 1, 3). The expected pattern of uplift in the hanging wall of the South-Central Crete fault also appears to support this interpretation, but it is not as straight forward as it is along the Asterousia range front (footwall of the Ptolemy fault) (Fig. 3). Assuming that the only contribution to vertical tectonics in the hanging wall of the SCCF were uniform regional uplift and slip on the South-Central Crete fault, we would expect slower uplift (or possibly subsidence) near the linkage site that increases to the east. Uplift rates near Tsoutsouros are lower than at the eastern end of the study area, but the slowest rates are found near the center of the South-Central Crete fault. Low uplift rates near the fault center are due to local subsidiary, orthogonally-striking faults embedded in the hanging wall of the SCCF (Gallen et al., 2014). Another factor that may play a role in uplift rate determinations is proximity of the mapped marine terraces to the master fault, as displacements will be greatest at the fault and decay with orthogonal distance from the fault. Terraces are closest to the South-Central Crete Fault near the fault center (near the town of Arvi) (Fig. 1b). Despite this discrepancy the site average uplift pattern and the pattern of marine terrace deformation are consistent with displacement on a linked Ptolemy Fault-South-Central Crete Fault system. The above is simply a defense of the interpretation that the Ptolemy fault and the South-Central Crete fault recently linked, which provides the basis for this investigation.

5.2 River profiles, knickpoints, and topography

We interpret relative differences in slope and k_{sn} as reflecting changes in landscape-scale erosion rates across the study area (Fig. 4). This interpretation is supported by important empirical studies that demonstrate positive relationships between topographic (e.g., slope) and fluvial (e.g. k_{sn}) metrics (Ahnert, 1970; Montgomery and Brandon, 2002; Ouimet et al., 2009; DiBiase et al., 2010; Kirby and Whipple, 2012; Miller et al., 2013). Further, the stream power incision model predicts that, all else being equal, a steep-gradient river channel will incise more rapidly than will a shallow-gradient channel (Howard et al., 1994; Whipple and Tucker, 1999). Within this framework knickpoints represent the mobile boundary separating river reaches that are eroding at different rates (Whipple and Tucker, 1999; Kirby and Whipple, 2012).

The steep hillslopes and high k_{sn} along the range front of the Asterousia Mountains are interpreted as reflecting a recent phase of increased erosion (Fig. 4a, b). In the nine westernmost basins (basins 1 – 9) there is a break in topographic slope and k_{sn} between 300 and 1000 m above modern sea level that is controlled by a single fluvial knickpoint on the channel of each basin (Figs. 1, 4, 5). This marked landscape transition suggests a reduction in the rate of erosion at higher elevations that we interpret to be largely the result of an increase in uplift rate of the Asterousia footwall. In the eastern two catchments in the Asterousia (basins 10 and 11) two knickpoints are observed. The k_{sn} values of the three river reaches bound by these knickpoints progressively increases upstream (Figs. 4b, 5d). We interpret this distribution of k_{sn} as the result of a two phase increase in uplift rate, where each jump in uplift rate generated a knickpoint.

The changes in topographic slope and k_{sn} are noisier for Dikti streams when compared to those draining the Asterousia. This difference is mostly due to greater variation in local rock type for Dikti-draining streams relative to the Asterousia (Fig. 1a, 5b). Despite the noisier signal, general patterns are observed from the Dikti river profiles that are similar to those noted in the Asterousia (Figs. 4, 5). Topographic slopes and k_{sn} are low along the SCCF hanging wall of the Dikti Mountains, likely reflecting low erosion and uplift rates (Fig. 4, 5). Across the South-Central Crete fault there is an abrupt change in both local slope and k_{sn} indicating an abrupt change in the rates of both rock uplift and erosion from the hanging wall onto the footwall sides of the fault (Fig. 4b, 5e). River profiles in the SCCF footwall are morphologically similar to basins 10 and 11 in the Asterousia (Ptolemy fault footwall), with all profiles exhibiting two major knickpoints where k_{sn} progressively decreases upstream (Fig. 4-5d, e). Similar to the eastern end of the Asterousia, we interpret the formation of knickpoints and progressive steepening of the river profiles as the result of a two phased increase in uplift rate.

Generation-1 knickpoints are interpreted to record an early increase in the uplift rate and generation-2 knickpoints the tell-tale signal of a more recent increase. The river reaches above generation-1 knickpoints are uniformly shallow suggesting a period of relatively slow uplift rate (Fig. 5d-e, 6). The elevation pattern of generation-1 knickpoints is consistent with a cumulative uplift history on two individual normal fault segments with the highest elevations at fault center in each footwall that taper to lower elevations at the fault tips (Fig. 5b). We thus interpret generation-1 knickpoints as being created by an increase in footwall uplift rate due to accelerated slip along independent Ptolemy and South-Central Crete faults prior to fault linkage. Because of their spatial proximity and association with the South-Central Crete fault, we infer that the lower elevation generation-2 knickpoints record a change in footwall uplift rate associated with a change in rate of fault slip due to linkage of the South-Central Crete fault and Ptolemy faults (Fig. 5). To further explore this hypothesis of river profile morphology and knickpoint generation we turn to the k_{sn} pattern preserved in individual longitudinal profile segments as a function of distance along the coast as a means to uncover the relative uplift history in space and time and compare it to expectations from fault mechanics (Fig. 2, 6).

5.3 Normalized k_{sn} patterns and uplift history

5.3.1 Along strike patterns

The interpretations presented in the following section rely on the stream power incision model described in section 2.5. Specifically we assume that k_{sn} largely reflects the ratio of uplift rate to bedrock erodibility per Eq. (4). We emphasize the phrase ‘largely reflects’ because, as argued in section 5.5, there are factors other than uplift rate and erodibility (e.g. waterfall formation, temporal variations in catchment area) that can influence the empirically derived value of k_{sn} . Moreover, we acknowledge that rivers do not only respond to changes in uplift through river channel steepening, as river channel width and the size of grains delivered to channel segments also evolve in space and time during transient landscape evolution (Turowski et al., 2006, 2009; Amos and Burbank, 2007; Whittaker et al., 2007; Finnegan et al., 2007). Despite

these complexities, we argue that the dominant factor influencing the development of knickpoints and changes in river profile k_{sn} from the streams investigated in South-central Crete are variations in the relative rate of rock uplift.

The existence of dated marine terraces preserved in the Asterousia footwall and the Dikti hanging wall allows for comparisons of both k_{sn} and uplift rates for the lowest river reaches (Fig. 3b, 6a). Along the Ptolemy footwall of the Asterousia Mountains, k_{sn} from the lowest river reaches are on average four times higher than k_{sn} from comparable reaches of the SCCF hanging wall in front of the Dikti Mountains. Non-coincidentally, this difference in k_{sn} mimics the differences in rock uplift rate between the two fault blocks, which differ by a factor > 2.5 (Fig. 3b, 6a). The larger difference in k_{sn} between the two fault blocks when compared to uplift rate might partially reflect differences in bedrock erodibility between river reaches along the Ptolemy fault footwall, which drain mostly more resistant Mesozoic carbonates and sandstones and mudstones, versus those draining the SCCF hanging wall, which cut through less indurated Neogene turbidities. However, for reasons outlined in the following section, 5.3.2, we think that much of this difference has to do with a non-linear relationship between channel erosion and uplift, where incision becomes less efficient at higher uplift rates. Along the Asterousia range front, k_{sn} of the lowest reaches increases from west-to-east approaching the middle of the fault and remains steady or slightly declines approaching the western tip of the South-Central Crete fault (Fig. 6a). This pattern mimics the displacement field recorded by marine terraces (Fig. 1d, 3b). The relatively low values of k_{sn} in the hanging wall of the SCCF are consistent with the low uplift rates recorded by marine terraces along this portion of this fault block. The monotonically-increasing relationship between k_{sn} for the lowest river reaches and the modeled coastal uplift rate supports the interpretation that k_{sn} is sensitive to changes in rock uplift rate (Fig. 7).

The lowest channel reaches along the footwalls of both the Asterousia and Dikti Mountains show similarly high k_{sn} (Fig. 6b). When plotted along the coastline this pattern is interpreted to reflect the present-day relative uplift rate of the footwalls, suggesting that the lowest uplift rates are located at the western and eastern tips of the Ptolemy and South-Central Crete faults, respectively. Both values of k_{sn} and uplift rate progressively increase approaching the center of the study area (town of Tsoutsouros) for ~ 20 km in either direction (Fig. 6b). This pattern is consistent with the displacement and footwall uplift pattern expected for two linked normal faults, with the most rapid uplift rates near the zone of linkage that then decline to minimum values approaching the outer tips of each fault (Fig. 2, 6b). While a side note, it is important to recognize that because the SCCF is onshore along the Dikti range front, it is possible to observe changes in k_{sn} as streams cross from the hanging wall onto the footwall. In all instances, k_{sn} values increase across this structural transition, and as such indicate that the fault is active (Fig. 6a, b).

The middle reaches of basins 10 – 21 exhibit lower k_{sn} relative to the lowest footwall reach, indicating a relatively slower uplift rate. We interpret the absence of a lower knickpoint in basins 1 – 9 as an indication that the uplift rate west of basin 9 did not change significantly after linkage of the Ptolemy and South-Central Crete faults. Assuming this interpretation is correct, the relative uplift rate for the lowest reach in basins 1 – 9 allows one to interpret the pattern of uplift along the

Ptolemy and South-Central Crete faults prior to linkage (Fig. 6c). The pattern of k_{sn} for footwall-draining streams is consistent with the uplift pattern expected on two mechanically isolated faults, with the highest values at the fault center that then taper to minima at the fault tips (Fig. 2, 6). The along strike pattern of k_{sn} for these stream reaches is consistent with the pattern of total cumulative displacement recorded by the maximum envelope of topography and the elevation distribution of generation-1 knickpoints (Fig. 1c, 5b, 6c).

The upper most river profile segments, those above generation-2-1 knickpoints, show consistently low k_{sn} indicating relatively low uplift rate over the entire study area (Fig. 6d). Our interpretation is that many of these low-gradient reaches possibly record pre-fault topography and the background regional rates of rock uplift of the forearc prior to faulting and/or the uplift rates at the initiation of faulting. Following from this interpretation, we consider many of the upland portions of the river basin as “relict topography”; however, we later argue in section 5.5 that not all of this topography is relict in the traditional view of a static drainage network geometry through time (c.f., Gallen et al., 2013), as portions of a few of the catchments may record geologically recent integration of basins that were internally drained.

In summary, the patterns of k_{sn} for different river reaches reflect a three phase uplift history. Starting with the oldest and moving forward in time, the upper most river reaches above generation-2-1 knickpoints are interpreted as recording a period of regionally low uplift rate (Fig. 6d). Intermediate river reaches follow an uplift pattern consistent with the pattern of displacement along two independent normal fault systems with a maximum uplift rate near the fault centers that then tapers to minima at the fault tips (Fig. 6c). Normalized channel steepness values from the lower footwall reaches are consistent with footwall uplift following linkage of adjacent fault systems, as increased uplift rates occur near the site of fault linkage (Fig. 6b), while ~~K_{sn} - k_{sn}~~ values from the hanging wall of the South-Central Crete fault are consistent with lower rates of net (secular + local) rock uplift due to slip on the fault (Fig. 6a). This history is consistent with the conceptual model presented in figure 2 and supports the findings of numerous other studies that show that river profiles are sensitive recorders of relative uplift histories (Snyder et al., 2000; Kirby and Whipple, 2001, 2012; Wobus et al., 2006; Whittaker et al., 2008; Boulton and Whittaker, 2009; Pritchard et al., 2009; Whittaker and Boulton, 2012; Perron and Royden, 2013; Royden and Perron, 2013; Goren et al., 2014; Whittaker and Walker, 2015).

5.3.2 Relationship between uplift rate and k_{sn}

The modeled coastal uplift pattern derived from marine terraces is similar to the relative pattern of k_{sn} along the coastline for the lowest river reaches along the Ptolemy footwall of the Asterousia range and river reaches on the hanging wall of SCCF in front of the Dikti Mountains (Fig. 7). The empirical estimation of stream power parameters K , the erodibility constant, and n , the slope exponent is achieved by assuming that these river reaches are locally in equilibrium, and by rearrangement of Eq. (4) (Fig. 7). We again acknowledge that in transient landscapes rivers not only adjust to changes in rock uplift rate through river channel steepening, but also by reduction in channel width in concert with spatial and temporal changes in sediment flux and grain size (Sklar and Dietrich, 2004; Finnegan et al., 2005, 2007; Amos and

Burbank, 2007; Whittaker et al., 2007; Cook et al., 2013; Attal et al., 2015; Shobe et al., 2016). However, it is beyond the scope of this study to assess the impact of this variable on river profile analysis. Nonetheless, ~~we suggest that the~~our results demonstrate that rivers in south-central Crete ~~predominantly~~ steepen in response to increased uplift rates, ~~and~~Under the assumption that river channel steepening is the dominant mechanism by which rivers respond to changes in rock uplift rate, ~~herefore~~ regression through k_{sn} – uplift rate data by an orthogonal least-squares method can be used to empirically calibrate parameters in the stream power incision model under different assumptions.

We first assume that the relationship between k_{sn} and uplift rate is non-linear and fit the data with a power-law regression that yields a regionally averaged erodibility constant, K , of $\sim 3.47\text{e}^{-5} \text{ m}^{0.51} \text{ yr}^{-1}$ and defines the slope exponent, n , as 0.55 (Fig. 7a). Assuming that $n = 1$ and fitting the data with a linear regression we derive a K of $\sim 1.58\text{e}^{-6} \text{ m}^{0.1} \text{ yr}^{-1}$ when the fit is unconstrained (Fig. 7b) and a K of $\sim 2.69\text{e}^{-6} \text{ m}^{0.1} \text{ yr}^{-1}$ when the regression is forced through the origin (Fig. 7c). Both the power-law and unconstrained linear regression described the data well with r^2 of 0.71 and 0.61, respectively (Fig. 7a and b). However, with an r^2 of 0.05, the linear regression forced through the origin provides a poor fit to the data (Fig. 7c). All of the regionally average K values are consistent with the range of other studies (e.g., Stock and Montgomery, 1999); however, the only fit that realistically describes the data is the power-law fit (Fig. 7). Our rationale is that the linear fit forced through the origin does not describe the data well and the unconstrained linear fit has a y-intercept on the uplift rate (a proxy for local erosion rate) axis. This would suggest that there is a threshold uplift rate (or erosion rate) at which the rivers begin to steepen. Prior to this threshold the rivers would be capable of incising, but with zero steepness, which is unreasonable. Rather, most studies that empirically calibrate the stream power incision model find a y-intercept on the k_{sn} axis if a linear model were used suggesting there is a threshold channel steepness that must be attained before erosion commences, which is more physically reasonable (e.g. Miller et al., 2013). We therefore interpret the power-law fit as the best and most physically reasonable approximation of our data.

An interesting outcome of this analysis is that the slope exponent for rivers in south-central Crete is ~ 0.55 . Most studies that empirically calibrate the exponents needed for the stream power equation derive values of n that are ≥ 1 (Ouimet et al., 2009; DiBiase et al., 2010; Whittaker and Boulton, 2012; Harel et al., 2016). A slope exponent, n , of less than one is interesting because it suggests that river incision becomes less efficient with steepening of the river channel. Rivers in the central Apennines that are in a tectonically, geologically and climatically similar environment to Crete, with transient landscapes, active extensional faults, significant carbonate bedrock and a semi-arid climate are also reported to have $n < 1$ (Whittaker et al., 2008; Attal et al., 2011; Royden and Perron, 2013; Mudd et al., 2014). We do not think that the similarities between the observations in Crete and the central Apennines are coincidental and suggest that processes that operate to produce $n < 1$ (discussed in the section 5.5) in south-central Crete might apply elsewhere.

5.4 Knickpoint metrics

If the rivers in south-central Crete behave in a manner consistent with the stream power incision model, knickpoint distributions should be predictable. Differences in knickpoint elevation will occur due to spatially variable rock uplift, which is observed as noted above. Models of knickpoint retreat based on the stream power incision model (e.g., Rosenblum et al., 1994; Whipple and Tucker, 1999; Crosby and Whipple, 2006; Berlin and Anderson, 2007) state that the celerity of a knickpoint will be:

$$\frac{dx}{dt} = KA^m S^{n-1} \quad (9)$$

It is important to note that Eq. (9) does not incorporate a component of uplift, such that from theory alone, knickpoint celerity is not dependent on uplift rate. This equation can be solved for dt and, in the special case where K , m , and n are known, integrated to determine the response time of the river, which is referred to as τ (Goren et al., 2014; Fox et al., 2014). The response time of the river from a reference base level position to a knickpoint represents the knickpoint travel time, and knickpoints originating from the same relative base level fall event should have the same τ . Herein, we utilize the variable τ' to indicate to readers that the time component associated with τ determinations in our study is relative, not absolute, as it is based on empirically derived constants that may not represent actual values. The calculation of τ' is valuable in areas of spatially variable uplift rate, such as south-central Crete, because the elevation of knickpoints from the same relative base level fall event will not lie at the same elevation, as is expected if uplift rate is uniform (Niemann et al., 2001). It is also worth noting that if $n = 1$ and K is uniform than χ effectively represents the relative response time of a river network and, thus, knickpoints from a common base level fall event will cluster around the same χ distance.

The knickpoints in south-central Crete fail to conform to predictions of travel distance based on the linear form of Eq. (9), which predicts that knickpoints of a common origin will be at the same χ distance (Fig. 8a). Both generations of knickpoints have a range of χ distances and knickpoint χ distance has an apparent weak inverse correlation with downstream k_{sn} (Fig. 8a, b). This latter observation is expected if $n < 1$, and therefore supports our analysis of k_{sn} and uplift rate data that suggests $n \sim 0.55$ (e.g. Fig. 7a). However, when the river response time, τ' , is calculated using the empirically calibrated K and n from the power-law fit shown in figure 7a both knickpoint generations fail to collapse onto a single time (Fig. 8c). We note here again that we do not interpret τ' calculated here as the actual response time of the rivers in south central Crete, but rather as an apparent response time for reasons we discuss in the follow sections. Generation 1 knickpoints cluster equally well in χ and τ' , but generation 2 knickpoints but show a large amount of scatter for both metrics (Fig. 8). Similar to χ , knickpoint τ' shows an inverse correlation with k_{sn} of the next downstream reach (Fig. 8c). This correlation appears non-linear above k_{sn} values of $\sim 200 \text{ m}^{0.9}$ where there is little difference in τ' . This suggests that the knickpoints propagate very slowly when rivers steepen beyond $\sim 200 \text{ m}^{0.9}$ and their celerity normalized to upstream drainage area increases more rapidly below this steepness threshold. One might be tempted to assign the inverse relationship and spread in τ' versus k_{sn} data to local variations in rock type, as weaker rocks will have a faster response time (larger τ' values) and higher steepness

(provided other factors, such as uplift rate and climate, are constant) relative to stronger rocks. However, when rock type is included on the $\tau'-k_{sn}$ plot, no clustering of $\tau'-k_{sn}$ is noted for a particular rock type (Fig. 8d). While somewhat confounding, this relationship supports our earlier assertion that rock type plays an important, but secondary role in controlling fluvial processes in south-central Crete.

Beyond local variations in rock type we further explore possible explanations for the unpredictability of knickpoint travel distances in south-central Crete per figure 8. The goal of this discussion is to attempt to reconcile our observations in the context of our current understanding of river incision theory and landscape evolution. In the following sections we discuss the potential for changes in the mechanics of river incision for steep channel segments, changes in river network topology (drainage area exchange and river capture), variable origin for generation-2 knickpoints, break down of assumed drainage area discharge scaling due to karst hydrology found through Mediterranean regions, and the role of chemical weathering in river incision processes. Importantly, these processes might also help explain why the empirically derived value of n is less than 1 in south-central Crete.

5.5 Potential factors complicating river profile analysis in south-central Crete

5.5.1 Over-steepened river channels

River channel segments across the study area that reach or exceed k_{sn} values of $\sim 300 \text{ m}^{0.9}$ often contain vertical waterfalls (Fig. 9). These river sections are only associated with the lowest footwall reaches and are noted in basins 3, 6, 7, 8 and 9 in the Asterousia and basins 13, 16, 17 and 18 in the Dikti. All of the waterfalls occur in Mesozoic carbonate bedrock that is massive or has bedding that is gently dipping upstream. One possible explanation for why these steep river channel segments appear to incise less efficiently than lower gradient channels (e.g. $n < 1$) is that the mechanics of river incision change when vertical waterfalls form (Lamb et al., 2007; DiBiase et al., 2015). Previous research has shown that waterfall formation may either enhance or inhibit river incision rates and would result in an apparent $n > 1$ or $n < 1$, respectively. We suggest that in south-central Crete, carbonate rocks promote the formation of waterfalls at rapid uplift rates. When waterfalls form, the efficiency of river incision is reduced and knickpoints migration rate slows. Continued rock uplift and associated base level fall over-steepens river segments. This process can help explain why generation-2 knickpoints are not observed in basins 6 – 9; river channel segments have been over-steepened such that a change in rock uplift rate is insufficient to generate a new, lower knickpoint. If correct, this interpretation means that quantitative information on the timing of uplift events and uplift rates from river profiles can be obscured or erased from the river network as a result of changing incision processes due to waterfall formation (DiBiase et al., 2015).

5.5.2 Drainage area exchange, river capture, and variable knickpoint origins

To assess the role of drainage area exchange on the fluvial geomorphology of south-central Crete we map the transformed distance variable χ (Fig. 10). Inspection of χ -maps suggests that there is abundant evidence for drainage basin

instability in south-central Crete (Fig. 10a, b). Contrasts in χ are noted along local divides in both the Asterousia and Dikti ranges (Fig. 10a, b). In the Asterousia the largest χ contrast is noted in the west where it appears that basins 1 and 3 are gaining drainage at the expense of basin 2 (Fig. 10a). Also noteworthy is basin 7, which is apparently expanding by consuming its neighbor's drainage area (Fig. 10a).

- 5 In the Dikti there are strong χ contrasts along local divides in many of the basins (Fig. 10b). Basins 14 and 15 have very high χ at their channel heads relative to their neighbors, suggesting they are losing drainage area (Fig. 10b). This interpretation is supported by the elongate and narrow shape of basins 14 and 15 that are widest in the middle and narrow upstream (Fig. 10b). Basin 13 is interpreted as expanding in size at the expense of neighboring basins. This basin has also captured a formally internally-drained basin and some beheaded channels now surround its local water divide (Fig. 10c).
- 10 When the χ -plots for basin 13 and 14 are compared, it is noted that the elevations for the trunk channel in basin 13 are always higher than elevations in basin 14 for a given χ distance (Fig. 10d). This elevation shift in a χ -plot is a hallmark of drainage area exchange, where the river elevation for the basin gaining drainage area (the aggressor) shifts to lower χ for a given elevation relative to the basin losing drainage area (the victim) (Fig. 10d; Willett et al., 2014). Basin 19 is interpreted as expanding (Fig. 10b). This basin occupies an ancient submarine landslide scar and what remains of the deposit (Alves and
- 15 Lourenço, 2010). The morphologic legacy of this submarine landslide has not completely been erased from the landscape and favors the expansion of basin 19 because its relative base level is lower than its neighbors at a given distance from the river mouth. Numerous other local divides appear to be moving and their relative directions are shown on figure 11.

- Divide motion, drainage area exchange and river capture can wreak havoc on river profile analysis, destroying the linkages between empirically derived parameters and river incision theory as cast in Eq. (4) and Eq. (5). Although generally
- 20 implicit, one of the fundamental assumptions in river profile analysis is that the drainage network has remained static through time. If this assumption is not met, empirical measurements of k_s or k_{sn} cannot be directly linked to the quasi-physical description of river incision expressed by the stream power incision model. Knickpoint migration speeds will vary in ways not predicted by the knickpoint celerity model, which also requires that drainage area has remained the same during the time when migrating knickpoints are present in a given catchment. Rivers that gain drainage area will appear to steepen as they
- 25 shift to lower χ and knickpoint migration rates will increase relative to initial conditions. For basins that lose drainage area, both k_s and k_{sn} will decline and knickpoint migration rates will slow with respect to the initial state of the basin.

- When a river capture occurs, a mobile knickpoint will form that is not directly related to changes in the rate of tectonic uplift (e.g. Yanites et al., 2013). While we think that large scale drainage captures are rare in south-central Crete, it is possible that basin 13 represents an exception. The lower generation-1 knickpoint may be related to capture of a formally
- 30 internally drained basin (Fig. 10c). This potential capture could have been facilitated by an increase in uplift rate due to linkage of the South-Central Crete fault. In such a case the differences in channel steepness above and below the knickpoint at least partially record the history of relative base level fall rates, but quantitative information on uplift rates have been lost due to changes in drainage area through time. We suggest that much of the noise observed in the generation-2 knickpoint

data is due to drainage area loss or gain across the study area. We also acknowledge the possibility that some of the knickpoints might be non-tectonic in origin (e.g. river captures). Nonetheless, the consistent patterns in knickpoint elevation and k_{sn} for the different river reaches along the coastline leads us to conclude that the majority of the knickpoints in this study are the result of temporal changes in the rate of rock uplift and that the changes in channel steepness mostly record the
5 *relative* changes in rock uplift rate through time.

5.5.3 Other possible mechanisms for odd river profile behavior

Based on observations and analysis of the river systems in south-central Crete the formation of vertical waterfalls and drainage area exchange play an important role in forcing rivers to deviate from expectations of the stream power incision model. However, there are several other possible processes that could play a role in anomalous behavior of river systems in
10 regions geologically and climatically similar to Crete. While we do not have the data to test these hypotheses, for the sake of completeness we include a brief discussion of each below.

5.5.3.1 Karst Hydrology

Carbonates or other highly-fractured and transmissive rocks units subject to the formation of karst have the potential for rapid surface water infiltration that can result in a breakdown of the typically observed power-law relationship
15 between contributing drainage area and water discharge (O'Driscoll and DeWalle, 2006; Allan and Castillo, 2007). The loss of surface water to groundwater in the headwaters of a catchment can result in a reduction in both discharge and river incision rate at higher elevations. At lower elevations where groundwater is delivered back into the surface river network, discharge will be elevated and incision rates higher, relative to areas upstream (O'Driscoll and DeWalle, 2006). The development of efficient groundwater systems can also result in enhanced physical and chemical erosion where ground water
20 springs discharge into the surface water fluvial system (e.g. Dunne, 1990). Groundwater sapping acts to undercut steep river sections resulting in oversteepened river reaches. Groundwater sapping erosion is observed in locations like the Grand Canyon, USA and the Big Island of Hawaii and results in over steepened river reaches (Laity and Malin, 1985; Kochel and Piper, 1986).

Because carbonate is so prevalent beneath Crete specifically, and the circum-Mediterranean region generally, and
25 there is ample evidence of karstic depressions throughout the island (e.g. Rackham and Moody, 1996), we suggest that groundwater hydrology likely plays an important role in the development of river networks here. If groundwater sapping is an important process in the carbonates, assumptions about the scaling between drainage area and discharge made in derivation of the stream power incision model are violated. Groundwater sapping may contribute to the oversteepened reaches and the formation of waterfall in the carbonate units in south-central Crete. Anecdotal evidence exists to support this
30 hypothesis as springs are often observed at the base of waterfalls throughout the study area. Springs are delineated by the presence of vegetation at the base of the vertical waterfall in Figure 9b, for example.

5.5.3.2 Sediment flux and grain size distributions

Numerous studies emphasize the important role that sediment plays in river incision processes (Sklar and Dietrich, 2004; Finnegan et al., 2007; Whittaker et al., 2007; Cook et al., 2013; Attal et al., 2015; Shobe et al., 2016). Theoretical models developed to describe this process typically only describe the flux of sediment moving through the system, ignoring the potentially important effects of grain size on incision process (Tucker and Whipple, 2002; Tucker, 2004; Gasparini et al., 2006). Some recent studies have tried to better understand the role of sediment grain size distributions on incision processes (Shobe et al., 2016; Brocard et al., 2016). What has been shown in these latter studies is that sediment grain size distributions affect the relative efficiency of incision along a river profile. Brocard et al. (2016) demonstrated that highly weathered uplands above knickpoints only contributed sand and fine grain sizes to the river networks along the southern flank of the Luquillo Mountains, Puerto Rico. Based on beryllium-10 derived erosion rates and knickpoint celerity modeling, Brocard and colleagues show that knickpoint retreat rates were slower than expected for general incision schemes. It was argued that the small grain sizes derived from highly weathered uplands were ineffective at eroding the lip of knickpoints, slowing retreat rates relative to incision models that suggest knickpoint retreat rates should scale with drainage area.

Some of the areas above generation-2 knickpoints in south-central Crete erode into areas that are not highly weathered, but are underlain by fine-grained marine or terrestrial sediments that are not mapped at the scale of the geologic maps used in this study. These fine-grained sediments are most prevalent in the headwaters of basins 6 – 9 (Fig. 5). Following the rationale of Brocard et al., (2016), we suggest that this fine-grained sediment may decouple knickpoint retreat velocity from a simple power-law scaling relationship for some of the streams in south-central Crete. If correct, this mechanism can help explain some of the scatter observed in the generation-2 knickpoint data, as well as the over-steepening of channels below these knickpoints.

5.5.3.3 Chemical weathering and river incision

Chemical weathering of river channels has been argued to influence incision processes (Hancock et al., 2011; Murphy et al., 2016). Most studies that investigate the role of chemical weathering on incision processes have looked at its effects on cross-sectional channel width (Hancock et al., 2011). However, it is also possible that chemical weathering could be important in influencing the relative efficiency of erosion along a river channel (Murphy et al., 2016). A parcel of rock exhuming through a more slowly eroding river reach will interact with the hydrosphere, atmosphere and biosphere for a longer period of time relative to rock exhuming through a more rapidly eroding river segment. These interactions should act to weaken rock through weathering, such that the bedrock in most slowly eroding river reaches will be more easily eroded than bedrock in rapidly eroding channel segments. If it is assumed that the erodibility is uniform along the river profile when it is in fact inversely related to incision rate, the effect will be an apparent slope exponent, n , that is less than one. While we currently have no evidence to support this hypothesis, we also do not have any data to discount it. Nonetheless, it remains another possible complicating factor that can affect river incision processes and obscure signals of interest (tectonics and climate) in river profile analysis.

6 Study Implications

The implications from this research are important for studies that use river profile geometries to infer tectonic signals. One promising aspect of this study is that we show that the relative spatial and temporal patterns of uplift can be recorded in river profiles consistent with numerous other studies ((Snyder et al., 2000; Kirby and Whipple, 2001, 2012; Wobus et al., 2006; Whittaker et al., 2008; Boulton and Whittaker, 2009; Pritchard et al., 2009; Whittaker and Boulton, 2012; Perron and Royden, 2013; Royden and Perron, 2013; Goren et al., 2014; Whittaker and Walker, 2015). However, other processes, such as waterfall formation, drainage area exchange, karst hydrology and ground water sapping, the role of sediment in river incision, and chemical weathering, may obscure quantitative predictions about time-scales of landscape adjustment and uplift rate history from the modern topography (Prichard et al., 2009; Roberts et al., 2013; Goren et al., 2014). This study emphasizes the fact that measurements made from river profile geometries are completely empirical. In other words, any incision model calibrated using river profiles represent *apparent* values rather than actual stream incision parameters. A good example of this comes from our empirical calibration to derive the slope exponent in this study. While it is possible that river incision processes are best described by an $n < 1$, it is equally likely that this is solely an artifact of assumptions made in our analysis, namely that the incision process along a river reach can be approximated by constancy in drainage area, local channel slope, and K . This study represents a cautionary tale for river profile analysis, emphasizing the care that must be taken when using fluvial topography to infer tectonic signals, particularly in a quantitative sense. Our results show that rivers in south-central Crete do not respond to tectonic forcing in a manner consistent with the stream power incision model, particularly with respect to river response times as noted by the failure of the knickpoint celerity model. It is important to consider the assumptions embedded in river profile analysis before interpreting results from river profile analysis, including but not limited to power-law scaling between discharge and drainage area, power-law scaling between channel width and discharge, and stasis in drainage area through time. Similarly, it is important to be cognizant that the quantitative interpretation of river profile geometries used to infer tectonic signals relies on the ability of the stream power incision model to describe the incision process of the channel(s) of interest. If incision processes deviate from the stream power incision model, accurate interpretation of results may be obfuscated because the response time and behavior of the river is challenging to constrain.

7 Conclusions

The spatial and temporal changes in the normalized channel steepness index (k_{sn}) are consistent with the growth and linkage of two large normal fault systems, the Ptolmey and South-Central Crete faults (Fig. 5c-e, Fig. 6). Further, it is illustrated that river profile segments interpreted to be adjusted to the modern uplift rate, as deduced from studies of marine terraces and are positively correlated to rock uplift rate (Fig. 7). This analysis confirms the findings of numerous other studies that show that river profiles will adjust their gradient to keep pace with the rate of rock uplift (Snyder et al., 2000; Kirby and Whipple, 2001). While, these findings are promising, we also show that when we empirically calibrate the steam

power incision model for south-central Crete the slope exponent, n , is less than one. This finding is at odds with most other studies of river incision that typically show $n \geq 1$ (Ouimet et al., 2009; DiBiase et al., 2010; Kirby and Whipple, 2001, 2012; Harel et al., 2016), and suggests, rather counterintuitively, that river incision becomes less efficient when river channels steepen. Knickpoints separating river segments of different steepness in this study area do not migrate in a fashion consistent with knickpoint retreat rates based on the stream power incision model and a fixed drainage network size, suggesting that other processes are affecting knickpoint migration rates. Evidence exists for the association of oversteepened river reaches and the formation of vertical waterfalls (Fig. 9) and for the exchange of drainage area between adjunct basins and the capture of formally internally drainage basins (Fig. 10). Both of these processes can help explain the development of oversteepened river reaches and the breakdown of scaling between knickpoint migration distance and modern upstream contributing drainage area. Other processes that may contribute to the anomalous behavior of rivers in south-central Crete include karst hydrology and groundwater sapping, the unaccounted role of sediment flux and grain sizes on river incision, and linkages between chemical weathering and the efficiency of river incision. Our research represents a cautionary tale for river profile analysis, particularly when river profile geometries are used to quantitatively invert for rock uplift histories, as the numerous assumptions made to produce data from river profiles may not hold in particular settings. As such, parameters derived from river profiles that are used to infer stream incision histories should be considered apparent, rather than actual.

8 Code availability

All of the river profile analysis codes are available upon request from the corresponding author.

9 Author contributions

S.F.G. and K.W.W. conceived and designed the study. S.F.G. wrote the data analysis codes and conducted all analyses. S.F.G. and K.W.W. contributed equally to interpretation of results and writing the manuscript.

10 Competing interests

The authors declare that they have no conflict of interest.

11 Acknowledgements

Acknowledgment is made to the Donors of the American Chemical Society Petroleum Research Fund for primary support of this research under grant #50792-DNR8. Additional support was provided by a 2010 Geological Society of America Graduate Student Research Grant (number 9596-11) and a 2012 Sigma Xi Grant-in-Aid of Research to Gallen. We would also like to thank the Institute of Geology and Mineral Exploration in Greece for granting us permission to carry out

field studies on Crete. Nicholas Panzera is thanked for digitizing the geologic map of south-central Crete. We are indebted to Charalampos Fassoulas and Nikos Somarakis for logistical support while in the field.

12 References

- Ahnert, F.: Functional relationships between denudation, relief, and uplift in large, mid-latitude drainage basins, *Am. J. Sci.* 268, 243-263, 1970. <http://dx.doi.org/10.2475/ajs.268.3.243>
- Allan, J.D., Castillo, M.M.: *Stream ecology: structure and function of running waters*, Springer Science and Business Media, 2007.
- Alves, T.M., Lourenço, S.D.: Geomorphologic features related to gravitational collapse: Submarine landsliding to lateral spreading on a Late Miocene–Quaternary slope (SE Crete, eastern Mediterranean), *Geomorphology*, 123, 13-33, 2010. <http://dx.doi.org/10.1016/j.geomorph.2010.04.030>
- Amos, C.B., Burbank, D.W.: Channel width response to differential uplift, *J. Geophys. Res. F: Earth Surf.*, 112. <http://dx.doi.org/10.1029/2006JF000672>
- Anders, M.H., Schlische, R.W.: Overlapping faults, intrabasin highs, and the growth of normal faults. *J. Geol.*, 102, 165, 1994.
- Angelier, J.: Recent Quaternary tectonics in the Hellenic arc; examples of geological observations on land; recent crustal movements., *Tectonophysics*, 52, 267-275, 1979.
- Angelier, J., Lybéris, N., Le Pichon, X., Barrier, E., Huchon, P.: The tectonic development of the Hellenic arc and the Sea of Crete: A synthesis, *Tectonophysics*, 86, 159-196, 1982.
- Armitage, J.J., Duller, R.A., Whittaker, A.C., Allen, P.A.: Transformation of tectonic and climatic signals from source to sedimentary archive, *Nat. Geosci.*, 4, 231-235, 2011.
- Attal, M., Cowie, P.A., Whittaker, A.C., Hobley, D., Tucker, G.E., Roberts, G.P.: Testing fluvial erosion models using the transient response of bedrock rivers to tectonic forcing in the Apennines, Italy. *J. Geophys. Res. F: Earth Surf.*, 116, 2011. <http://dx.doi.org/10.1029/2010JF001875>
- Attal, M., Mudd, S.M., Hurst, M.D., Weinman, B., Yoo, K., Naylor, M.: Impact of change in erosion rate and landscape steepness on hillslope and fluvial sediments grain size in the Feather River basin (Sierra Nevada, California). *Earth Surf. Dyn.*, 3, 201-222, 2015. <http://dx.doi.org/10.5194/esurf-3-201-2015>
- Berlin, M.M., Anderson, R.S.: Modeling of knickpoint retreat on the Roan Plateau, western Colorado, *J. Geophys. Res. F: Earth Surf.*, 112, F03S06, 2007. <http://dx.doi.org/10.1029/2006jf000553>
- Bishop, P.: Drainage rearrangement by river capture, beheading and diversion, *Prog. Phys. Geogr.*, 19, 449-473, 1995. <http://dx.doi.org/10.1177/030913339501900402>
- Bohnhoff, M., Harjes, H.-P., Meier, T.: Deformation and stress regimes in the Hellenic subduction zone from focal Mechanisms, *J. Seismolog.*, 9, 341-366, 2005.

- Bohnhoff, M., Makris, J., Papanikolaou, D., Stavrakakis, G.: Crustal investigation of the Hellenic subduction zone using wide aperture seismic data, *Tectonophysics*, 343, 239-262, 2001.
- Boulton, S.J., Whittaker, A.C.: Quantifying the slip rates, spatial distribution and evolution of active normal faults from geomorphic analysis: Field examples from an oblique-extensional graben, southern Turkey, *Geomorphology*, 104, 299-316, 2009. <http://dx.doi.org/10.1016/j.geomorph.2008.09.007>
- Brix, M.R., Stöckhert, B., Seidel, E., Theye, T., Thomson, S.N., Küster, M.: Thermobarometric data from a fossil zircon partial annealing zone in high pressure–low temperature rocks of eastern and central Crete, Greece, *Tectonophysics*, 349, 309-326, 2002. [http://dx.doi.org/10.1016/S0040-1951\(02\)00059-8](http://dx.doi.org/10.1016/S0040-1951(02)00059-8)
- Brocard, G.Y., Willenbring, J.K., Miller, T.E., Scatena, F.N.: Relict landscape resistance to dissection by upstream migrating knickpoints, *J. Geophys. Res. F: Earth Surf.*, 121, 1182-1203, 2016. <http://dx.doi.org/10.1002/2015JF003678>
- Caputo, R., Monaco, C., Tortorici, L.: Multiseismic cycle deformation rates from Holocene normal fault scarps on Crete (Greece), *Terra Nova*, 18, 181-190, 2006.
- Cartwright, J.A., Trudgill, B.D., Mansfield, C.S.: Fault growth by segment linkage: an explanation for scatter in maximum displacement and trace length data from the Canyonlands Grabens of SE Utah, *J. Struct. Geol.*, 17, 1319-1326, 1995.
- Cook, K.L., Turowski, J.M., Hovius, N.: A demonstration of the importance of bedload transport for fluvial bedrock erosion and knickpoint propagation, *Earth Surf. Processes Landforms*, 38, 683-695, 2013. <http://dx.doi.org/10.1002/esp.3313>
- Cowie, P.A., Roberts, G.P.: Constraining slip rates and spacings for active normal faults, *J. Struct. Geol.*, 23, 1901-1915, 2001.
- Cowie, P.A., Scholz, C.H.: Physical explanation for the displacement-length relationship of faults using a post-yield fracture mechanics model, *J. Struct. Geol.*, 14, 1133-1148, 1992.
- Crosby, B.T., Whipple, K.X.: Knickpoint initiation and distribution within fluvial networks: 236 waterfalls in the Waipaoa River, North Island, New Zealand, *Geomorphology*, 82, 16-38, 2006.
- Craw, D., Burrige, C., Norris, R., and Waters, J.: Genetic ages for Quaternary topographic evolution: A new dating tool, *Geology*, 36, 19-22, 2008.
- Davis, W.M.: The Geographical Cycle, *The Geographical Journal*, 14, 481-504, 1899. <http://dx.doi.org/10.2307/1774538>
- Dawers, N.H., Anders, M.H.: Displacement-length scaling and fault linkage, *J. Struct. Geol.*, 17, 607-614, 1995.
- Dawers, N.H., Anders, M.H., Scholz, C.H.: Growth of normal faults: Displacement-length scaling, *Geology*, 21, 1107-1110, 1993. [http://dx.doi.org/10.1130/0091-7613\(1993\)021<1107:gonfdl>2.3.co;2](http://dx.doi.org/10.1130/0091-7613(1993)021<1107:gonfdl>2.3.co;2)
- DiBiase, R.A., Whipple, K.X., Heimsath, A.M., Ouimet, W.B.: Landscape form and millennial erosion rates in the San Gabriel Mountains, CA, *Earth Plant. Sci. Lett.*, 289, 134-144, 2010. <http://dx.doi.org/10.1016/j.epsl.2009.10.036>
- DiBiase, R.A., Whipple, K.X., Lamb, M.P., Heimsath, A.M.: The role of waterfalls and knickzones in controlling the style and pace of landscape adjustment in the western San Gabriel Mountains, California, *Geol. Soc. Am. Bull.*, 127, 539-559, 2015. <http://dx.doi.org/10.1130/b31113.1>

- Dunne, T.: Hydrology, mechanics, and geomorphic implications of erosion by subsurface flow. Geological Society of America Special Papers, 252, 1-28, 1990. <http://dx.doi.org/10.1130/SPE252-p1>
- Fassoulas, C.: The tectonic development of a Neogene basin at the leading edge of the active European margin: the Heraklion basin, Crete, Greece, *J. Geodyn.*, 31, 49-70, 2001.
- 5 Fassoulas, C., Kiliadis, A., Mountrakis, D.: Postnappe stacking extension and exhumation of high-pressure/low-temperature rocks in the Island of Crete, Greece, *Tectonics*, 13, 125-138, 1994.
- Finnegan, N.J., Roe, G., Montgomery, D.R., Hallet, B.: Controls on the channel width of rivers: Implications for modeling fluvial incision of bedrock, *Geology*, 33, 229-232, 2005. <http://dx.doi.org/10.1130/g21171.1>
- Finnegan, N.J., Sklar, L.S., Fuller, T.K.: Interplay of sediment supply, river incision, and channel morphology revealed by the transient evolution of an experimental bedrock channel, *J. Geophys. Res. F: Earth Surf.*, 112, 2007.
- 10 <http://dx.doi.org/10.1029/2006JF000569>
- Flemming, N.C.: Holocene Eustatic Changes and Coastal Tectonics in the Northeast Mediterranean: Implications for Models of Crustal Consumption, *Philos. Trans. R. Soc. London, Ser. A*, 289, 405-458, 1978.
- Flint, J.J.: Stream gradient as a function of order, magnitude, and discharge, *Water Resour. Res.*, 10, 969-973, 1974.
- 15 <http://dx.doi.org/10.1029/WR010i005p00969>
- Fox, M., Goren, L., May, D.A., Willett, S.D.: Inversion of fluvial channels for paleorock uplift rates in Taiwan, *J. Geophys. Res. F: Earth Surf.*, 119, 1853-1875, 2014. <http://dx.doi.org/10.1002/2014jf003196>
- Frankel, K.L., Pazzaglia, F.J.: Tectonic geomorphology, drainage basin metrics, and active mountain fronts, *Geografia Fisica e Dinamica Quaternaria*, 28, 7-21, 2005.
- 20 Gallen, S. F., Wegmann, K. W., and Bohnenstiehl, D. R.: Miocene rejuvenation of topographic relief in the southern Appalachians, *GSA Today*, 23, 4-10, 2013.
- Gallen, S.F., Wegmann, K.W., Bohnenstiehl, D.R., Pazzaglia, F.J., Brandon, M.T., Fassoulas, C.: Active simultaneous uplift and margin-normal extension in a forearc high, Crete, Greece, *Earth Planet. Sci. Lett.*, 398, 11-24, 2014.
- <http://dx.doi.org/10.1016/j.epsl.2014.04.038>
- 25 Gasparini, N.M., Bras, R.L., Whipple, K.X.: Numerical modeling of non-steady-state river profile evolution using a sediment-flux-dependent incision model, *Geological Society of America Special Papers*, 398, 127-141, 2006.
- [http://dx.doi.org/10.1130/2006.2398\(08\)](http://dx.doi.org/10.1130/2006.2398(08))
- Goren, L., Fox, M., Willett, S.D.: Tectonics from fluvial topography using formal linear inversion: Theory and applications to the Inyo Mountains, California, *J. Geophys. Res. F: Earth Surf.*, 119, 1651-1681, 2014.
- 30 <http://dx.doi.org/10.1002/2014JF003079>
- Greek Institute of Geology and Mineral Exploration: Geological Map of Greece, Andiskarion Sheet, Athens, Institute of Geology and Mineral Exploration (IGME), scale 1: 50,000, 1972.
- Greek Institute of Geology and Mineral Exploration: Geological Map of Greece, Akhendhriar Sheet, Athens, Institute of Geology and Mineral Exploration (IGME), scale 1: 50,000, 1974.

- Greek Institute of Geology and Mineral Exploration: Geological Map of Greece, Ierapetra Sheet, Athens, Institute of Geology and Mineral Exploration (IGME), scale 1: 50,000, 1977.
- Greek Institute of Geology and Mineral Exploration: Geological Map of Greece, Ano Viannos Sheet, Athens, Institute of Geology and Mineral Exploration (IGME), scale 1: 50,000, 1987.
- 5 Gupta, A., Scholz, C.H.: A model of normal fault interaction based on observations and theory, *J. Struct. Geol.*, 22, 865-879, 2000.
 - Hancock, G.S., Small, E.E., and Wobus, C.: Modeling the effects of weathering on bedrock-floored channel geometry, *J. Geophys. Res. F: Earth Surf.*, 116, F03018, 2011. <http://dx.doi.org/10.1029/2010JF001908>
 - 10 Harel, M.A., Mudd, S.M., Attal, M.: Global analysis of the stream power law parameters based on worldwide ¹⁰Be denudation rates, *Geomorphology*, 268, 184-196, 2016. <http://dx.doi.org/10.1016/j.geomorph.2016.05.035>
 - Harkins, N., Kirby, E., Heimsath, A., Robinson, R., Reiser, U.: Transient fluvial incision in the headwaters of the Yellow River, northeastern Tibet, China, *J. Geophys. Res. F: Earth Surf.*, 112, 2007. <http://dx.doi.org/10.1029/2006JF000570>
 - 15 Haviv, I., Enzel, Y., Whipple, K.X., Zilberman, E., Matmon, A., Stone, J., Fifield, K.L.: Evolution of vertical knickpoints (waterfalls) with resistant caprock: Insights from numerical modeling, *J. Geophys. Res. F: Earth Surf.*, 115, 2010. <http://dx.doi.org/10.1029/2008JF001187>
 - Haviv, I., Enzel, Y., Whipple, K.X., Zilberman, E., Stone, J., Matmon, A., Fifield, L.K.: Amplified erosion above waterfalls and oversteepened bedrock reaches, *J. Geophys. Res. F: Earth Surf.*, 111, 2006. <http://dx.doi.org/10.1029/2006JF000461>
 - 20 Hetzel, R., Tao, M., Niedermann, S., Strecker, M.R., Ivy-Ochs, S., Kubik, P.W., Gao, B.: Implications of the fault scaling law for the growth of topography: Mountain ranges in the broken foreland of north-east Tibet, *Terra Nova*, 16, 157-162, 2004. <http://dx.doi.org/10.1111/j.1365-3121.2004.00549.x>
 - Hilley, G.E., Arrowsmith, J.R.: Geomorphic response to uplift along the Dragon's Back pressure ridge, Carrizo Plain, California, *Geology*, 36, 367-370, 2008. <http://dx.doi.org/10.1130/g24517a.1>
 - 25 Howard, A.D.: A detachment-limited model of drainage basin evolution, *Water Resour. Res.*, 30, 2261-2285, 1994. <http://dx.doi.org/10.1029/94wr00757>
 - Howard, A.D., Kerby, G.: Channel changes in badlands, *Geol. Soc. Am. Bull.*, 94, 739-752, 1983. [http://dx.doi.org/10.1130/0016-7606\(1983\)94<739:ccib>2.0.co;2](http://dx.doi.org/10.1130/0016-7606(1983)94<739:ccib>2.0.co;2)
 - Jolivet, L., Brun, J.-P.: Cenozoic geodynamic evolution of the Aegean, *Int. J. Earth Sci.*, 99, 109-138, 2010. <http://dx.doi.org/10.1007/s00531-008-0366-4>
 - 30 Kelletat, D.: Perspectives in Coastal Geomorphology of Western Crete, Greece. *Z. Geomorphol. Suppl.*, 102, 1-19, 1996.
 - Kent, E., Boulton, S.J., Whittaker, A.C., Stewart, I.S., Cihat Alçiçek, M.: Normal fault growth and linkage in the Gediz (Alaşehir) Graben, Western Turkey, revealed by transient river long-profiles and slope-break knickpoints, *Earth Surf. Processes and Landforms*, 2016. <http://dx.doi.org/10.1002/esp.4049>

- Kirby, E., Whipple, K.: Quantifying differential rock-uplift rates via stream profile analysis, *Geology*, 29, 415-418, 2001.
[http://dx.doi.org/10.1130/0091-7613\(2001\)029<0415:qdrurv>2.0.co;2](http://dx.doi.org/10.1130/0091-7613(2001)029<0415:qdrurv>2.0.co;2)
- Kirby, E., Whipple, K.X.: Expression of active tectonics in erosional landscapes. *J. Struct. Geol.*, 44, 54-75, 2012.
<http://dx.doi.org/10.1016/j.jsg.2012.07.009>
- 5 Knapmeyer, M.: Geometry of the Aegean Benioff Zone, *Ann. Geofis.*, 42, 27-38, 1999.
- Kochel, R.C., Piper, J.F.: Morphology of large valleys on Hawaii: Evidence for groundwater sapping and comparisons with Martian valleys, *J. Geophys. Res. B: Solid Earth*, 91, E175-E192, 1986. <http://dx.doi.org/10.1029/JB091iB13p0E175>
- Lague, D.: The stream power river incision model: evidence, theory and beyond, *Earth Surf. Processes Landforms*, 39, 38-61, 2014. <http://dx.doi.org/10.1002/esp.3462>
- 10 Laity, J.E., Malin, M.C.: Sapping processes and the development of theater-headed valley networks on the Colorado Plateau, *Geol. Soc. Am. Bull.*, 96, 203-217, 1985. [http://dx.doi.org/10.1130/0016-7606\(1985\)96<203:spatdo>2.0.co;2](http://dx.doi.org/10.1130/0016-7606(1985)96<203:spatdo>2.0.co;2)
- Lamb, M.P., Dietrich, W.E.: The persistence of waterfalls in fractured rock, *Geol. Soc. Am. Bull.*, 121, 1123-1134, 2009.
<http://dx.doi.org/10.1130/b26482.1>
- Lamb, M.P., Howard, A.D., Dietrich, W.E., Perron, J.T.: Formation of amphitheater-headed valleys by waterfall erosion
15 after large-scale slumping on Hawai'i, *Geol. Soc. Am. Bull.*, 119, 805-822, 2007. <http://dx.doi.org/10.1130/b25986.1>
- Lambeck, K., Chappell, J.: Sea Level Change Through the Last Glacial Cycle, *Science*, 292, 679-686, 2001.
<http://dx.doi.org/10.1126/science.1059549>
- Lisiecki, L.E., Raymo, M.E.: A Pliocene-Pleistocene stack of 57 globally distributed benthic $\delta^{18}\text{O}$ records, *Paleoceanography*, 20, PA1003, 2005. <http://dx.doi.org/10.1029/2004pa001071>
- 20 Mackey, B. H., Roering, J. J., and Lamb, M. P.: Landslide-dammed paleolake perturbs marine sedimentation and drives genetic change in anadromous fish, *Proc. Natl. Acad. Sci. U.S.A.*, 108, 18905-18909, 2011.
- Manighetti, I., Campillo, M., Sammis, C., Mai, P.M., King, G.: Evidence for self-similar, triangular slip distributions on earthquakes: Implications for earthquake and fault mechanics, *J. Geophys. Res. B: Solid Earth*, 110, B05302, 2005.
<http://dx.doi.org/10.1029/2004jb003174>
- 25 Manighetti, I., King, G.C.P., Gaudemer, Y., Scholz, C.H., Doubre, C.: Slip accumulation and lateral propagation of active normal faults in Afar, *J. Geophys. Res. B: Solid Earth*, 106, 13667-13696, 2001.
<http://dx.doi.org/10.1029/2000jb900471>
- Marsellos, A.E., Kidd, W.S.F., Garver, J.I., 2010. Extension and exhumation of the HP/LT rocks in the Hellenic forearc ridge, *Am. J. Sci.*, 310, 1-36, 2010. <http://dx.doi.org/10.2475/01.2010.01>
- 30 Demir, C., Ergintav, S., Georgiev, I., Gurkan, O., Hamburger, M., Hurst, K., and Kahle, H.: Global Positioning System constraints on plate kinematics and dynamics in the eastern Mediterranean and Caucasus, *J. Geophys. Res. B: Solid Earth*, 105, 5695-5719, 2000.

- Merriitts, D., Vincent, K.R.: Geomorphic response of coastal streams to low, intermediate, and high rates of uplift, Mendocino triple junction region, northern California, *Geol. Soc. Am. Bull.*, 101, 1373-1388, 1989. [http://dx.doi.org/10.1130/0016-7606\(1989\)101<1373:grocst>2.3.co;2](http://dx.doi.org/10.1130/0016-7606(1989)101<1373:grocst>2.3.co;2)
- Meulenkamp, J.E., van der Zwaan, G.J., van Wamel, W.A.: On late Miocene to recent vertical motions in the Cretan segment of the Hellenic arc, *Tectonophysics*, 234, 53-72, 1994.
- 5 Miller, S. R., Baldwin, S. L., and Fitzgerald, P. G.: Transient fluvial incision and active surface uplift in the Woodlark Rift of eastern Papua New Guinea, *Lithosphere*, 4, 131-149, 2012. <http://dx.doi.org/10.1130/1135.1>
- Miller, S.R., Sak, P.B., Kirby, E., Bierman, P.R.: Neogene rejuvenation of central Appalachian topography: Evidence for differential rock uplift from stream profiles and erosion rates, *Earth Planet. Sci. Lett.*, 369–370, 1-12, 2013. <http://dx.doi.org/10.1016/j.epsl.2013.04.007>
- 10 Montgomery, D. R.: Coevolution of the Pacific salmon and Pacific Rim topography, *Geology*, 28, 1107-1110, 2000.
- Montgomery, D.R., Brandon, M.T.: Topographic controls on erosion rates in tectonically active mountain ranges, *Earth Planet. Sci. Lett.*, 201, 481-489, 2002.
- Montgomery, D.R., Foufoula-Georgiou, E.: Channel network source representation using digital elevation models, *Water Resour. Res.*, 29, 3925-3934, 1993.
- 15 Mouslopoulou, V., Begg, J., Nicol, A., Oncken, O., Prior, C.: Formation of Late Quaternary paleoshorelines in Crete, Eastern Mediterranean, *Earth Planet. Sci. Lett.*, 431, 294-307, 2015. <http://dx.doi.org/10.1016/j.epsl.2015.09.007>
- Mouslopoulou, V., Moraetis, D., Benedetti, L., Guillou, V., Bellier, O., Hristopulos, D.: Normal faulting in the forearc of the Hellenic subduction margin: Paleoearthquake history and kinematics of the Spili Fault, Crete, Greece, *J. Struct. Geol.*, 66, 298-308, 2014. <http://dx.doi.org/10.1016/j.jsg.2014.05.017>
- 20 Mouslopoulou, V., Moraetis, D., Fassoulas, C.: Identifying past earthquakes on carbonate faults: Advances and limitations of the ‘Rare Earth Element’ method based on analysis of the Spili Fault, Crete, Greece, *Earth Planet. Sci. Lett.*, 309, 45-55, 2011. <http://dx.doi.org/10.1016/j.epsl.2011.06.015>
- Mudd, S.M., Attal, M., Milodowski, D.T., Grieve, S.W.D., Valters, D.A.: A statistical framework to quantify spatial variation in channel gradients using the integral method of channel profile analysis, *J. Geophys. Res. F: Earth Surf.*, 119, 138-152, 2014. <http://dx.doi.org/10.1002/2013JF002981>
- 25 Murphy, B.P., Johnson, J.P.L., Gasparini, N.M., Sklar, L.S.: Chemical weathering as a mechanism for the climatic control of bedrock river incision, *Nature*, 532, 223-227, 2016. <http://dx.doi.org/10.1038/nature17449>
- Nicol, A., Watterson, J., Walsh, J.J., Childs, C.: The shapes, major axis orientations and displacement patterns of fault surfaces, *J. Struct. Geol.*, 18, 235-248, 1996.
- 30 Niemann, J. D., Gasparini, N. M., Tucker, G. E., and Bras, R. L.: A quantitative evaluation of Playfair's law and its use in testing long - ~~Process stream incision models~~ *Earth Surf.* 2001.
- O'Driscoll, M.A., DeWalle, D.R.: Stream–air temperature relations to classify stream–ground water interactions in a karst setting, central Pennsylvania, USA, *J. Hydrol.*, 329, 140-153, 2006. <http://dx.doi.org/10.1016/j.jhydrol.2006.02.010>

- Ouimet, W.B., Whipple, K.X., Granger, D.E.: Beyond threshold hillslopes: Channel adjustment to base-level fall in tectonically active mountain ranges, *Geology*, 37, 579-582, 2009. <http://dx.doi.org/10.1130/g30013a.1>
- Papazachos, B.C.: Large seismic faults in the Hellenic Arc, *Ann. Geofis.*, 39, 891-903, 1996.
- Papazachos, B.C., Karakostas, V.G., Papazachos, C.B., Scordilis, E.M.: The geometry of the Wadati-Benioff zone and lithospheric kinematics in the Hellenic arc, *Tectonophysics*, 319, 275-300, 2000.
- Pazzaglia, F. J., Gardner, T. W., and Merritts, D. J.: Bedrock fluvial incision and longitudinal profile development over geologic time scales determined by fluvial terraces, in: *Rivers Over Rock: Fluvial Processes in Bedrock Channels*, edited by: Wohl, E., and Tinkler, K., American Geophysical Union, Geophysical Monograph Series, Washington D.C., 207-236, 1998. <http://dx.doi.org/10.1029/GM107p0207>
- Penck, W., and Penck, A.: *Die morphologische Analyse: ein Kapitel der physikalischen Geologie*, 2, J. Engelhorn's nachf., 1924.
- Perron, J.T., Royden, L.: An integral approach to bedrock river profile analysis, *Earth Surf. Processes Landforms*, 38, 570-576, 2013. <http://dx.doi.org/10.1002/esp.3302>
- Pirazzoli, P.A., Thommeret, J., Thommeret, Y., Laborel, J., Montag-Gioni, L.F.: Crustal block movements from Holocene shorelines: Crete and Antikythira (Greece), *Tectonophysics*, 86, 27-43, 1982.
- Pope, R.J.J., Candy, I., Skourtsos, E., A chronology of alluvial fan response to Late Quaternary sea level and climate change, *Crete, Quat. Res.*, 83, 170-183, 2016. <http://dx.doi.org/10.1016/j.yqres.2016.06.003>
- Pope, R., Wilkinson, K., Skourtsos, E., Triantaphyllou, M., Ferrier, G.: Clarifying stages of alluvial fan evolution along the Sfakian piedmont, southern Crete: New evidence from analysis of post-incisive soils and OSL dating, *Geomorphology*, 94, 206-225, 2008.
- Prince, P.S., Spotila, J.A., Henika, W.S.: New physical evidence of the role of stream capture in active retreat of the Blue Ridge escarpment, southern Appalachians, *Geomorphology*, 123, 305-319, 2010. <http://dx.doi.org/10.1016/j.geomorph.2010.07.023>
- Prince, P.S., Spotila, J.A., Henika, W.S.: Stream capture as driver of transient landscape evolution in a tectonically quiescent setting, *Geology*, 39, 823-826, 2011. <http://dx.doi.org/10.1130/g32008.1>
- Pritchard, D., Roberts, G.G., White, N.J., Richardson, C.N.: Uplift histories from river profiles, *Geophys. Res. Lett.*, 36, 2009. <http://dx.doi.org/10.1029/2009GL040928>
- Rackham, O. and Moody, J.: *The making of the Cretan landscape*, Manchester University Press, Manchester, 1996.
- Rahl, J.M., Anderson, K.M., Brandon, M.T., Fassoulas, C.: Raman spectroscopic carbonaceous material thermometry of low-grade metamorphic rocks: Calibration and application to tectonic exhumation in Crete, Greece, *Earth Planet. Sci. Lett.*, 240, 339-354, 2005.
- Reilinger, R., McClusky, S., Vernant, P., Lawrence, S., Ergintav, S., Cakmak, R., Ozener, H., Kadirov, F., Guliev, I., Stepanyan, R., Nadariya, M., Hahubia, G., Mahmoud, S., Sakr, K., ArRajehi, A., Paradissis, D., Al-Aydrus, A., Prilepin, M., Guseva, T., Evren, E., Dmitrotsa, A., Filikov, S.V., Gomez, F., Al-Ghazzi, R., Karam, G.: GPS

- constraints on continental deformation in the Africa-Arabia-Eurasia continental collision zone and implications for the dynamics of plate interactions, *J. Geophys. Res. B: Solid Earth*, 111, 26, 2006. <http://dx.doi.org/10.1029/2005JB004051>
- Roberts, G.G., White, N.J., Shaw, B.: An uplift history of Crete, Greece, from inverse modeling of longitudinal river profiles, *Geomorphology*, 198, 177-188, 2013. <http://dx.doi.org/10.1016/j.geomorph.2013.05.026>
- Rosenbloom, N.A., Anderson, R.S.: Hillslope and channel evolution in a marine terraced landscape, Santa Cruz, California, *J. Geophys. Res. B: Solid Earth*, 99, 14013-14029, 1994. <http://dx.doi.org/10.1029/94JB00048>
- Royden, L., Taylor Perron, J.: Solutions of the stream power equation and application to the evolution of river longitudinal profiles, *J. Geophys. Res. F: Earth Surf.*, 118, 497-518, 2013. <http://dx.doi.org/10.1002/jgrf.20031>
- Safran, E.B., Bierman, P.R., Aalto, R., Dunne, T., Whipple, K.X., Caffee, M.: Erosion rates driven by channel network incision in the Bolivian Andes, *Earth Surf. Processes Landforms*, 30, 1007-1024, 2005. <http://dx.doi.org/10.1002/esp.1259>
- Schlische, R.W., Young, S.S., Ackermann, R.V., Gupta, A.: Geometry and scaling relations of a population of very small rift-related normal faults, *Geology*, 24, 683-686, 1996. [http://dx.doi.org/10.1130/0091-7613\(1996\)024<0683:gasroa>2.3.co;2](http://dx.doi.org/10.1130/0091-7613(1996)024<0683:gasroa>2.3.co;2)
- Schwanghart, W., Kuhn, N.J.: TopoToolbox: A set of Matlab functions for topographic analysis, *Environ. Modell. Software*, 25, 770-781, 2010. <http://dx.doi.org/10.1016/j.envsoft.2009.12.002>
- Schwanghart, W., Scherler, D.: Short Communication: TopoToolbox 2 – MATLAB-based software for topographic analysis and modeling in Earth surface sciences, *Earth Surf. Dynam.*, 2, 1-7, 2014. <http://dx.doi.org/10.5194/esurf-2-1-2014>
- Shobe, C.M., Tucker, G.E., Anderson, R.S.: Hillslope-derived blocks retard river incision, *Geophys. Res. Lett.*, 43, 5070-5078, 2016. <http://dx.doi.org/10.1002/2016GL069262>
- Sklar, L.S., Dietrich, W.E.: A mechanistic model for river incision into bedrock by saltating bed load, *Water Resour. Res.*, 40, 2004. <http://dx.doi.org/10.1029/2003WR002496>
- Snyder, N.P., Whipple, K.X., Tucker, G.E., Merritts, D.J.: Landscape response to tectonic forcing: Digital elevation model analysis of stream profiles in the Mendocino triple junction region, northern California, *Geol. Soc. Am. Bull.*, 112, 1250-1263, 2000. [http://dx.doi.org/10.1130/0016-7606\(2000\)112<1250:lrrtfd>2.0.co;2](http://dx.doi.org/10.1130/0016-7606(2000)112<1250:lrrtfd>2.0.co;2)
- Stock, J.D., Montgomery, D.R.: Geologic constraints on bedrock river incision using the stream power law, *J. Geophys. Res. B: Solid Earth*, 104, 4983-4993, 1999. <http://dx.doi.org/10.1029/98JB02139>
- Strasser, T.F., Runnels, C., Wegmann, K., Panagopoulou, E., McCoy, F., Digregorio, C., Karkanis, P., Thompson, N.: Dating Palaeolithic sites in southwestern Crete, Greece, *J. Quat. Sci.*, 26, 553-560, 2011. <http://dx.doi.org/10.1002/jqs.1482>
- Strobl, M., Hetzel, R., Fassoulas, C., Kubik, P.W.: A long-term rock uplift rate for eastern Crete and geodynamic implications for the Hellenic subduction zone, *J. Geodyn.*, 78, 21-31, 2014. <http://dx.doi.org/10.1016/j.jog.2014.04.002>

- Theye, T., Seidel, E.: Uplift-related retrogression history of aragonite marbles in Western Crete (Greece), *Contrib.Mineral. Petrol.*, 114, 349-356, 1993. <http://dx.doi.org/10.1007/bf01046537>
- Thomson, S.N., Stöckhert, B., Brix, M.R.: Thermochronology of the high-pressure metamorphic rocks of Crete, Greece: Implications for the speed of tectonic processes, *Geology*, 26, 259-262, 1998. [http://dx.doi.org/10.1130/0091-7613\(1998\)026<0259:tothpm>2.3.co;2](http://dx.doi.org/10.1130/0091-7613(1998)026<0259:tothpm>2.3.co;2)
- Tiberti, M.M., Basili, R., Vannoli, P.: Ups and downs in western Crete (Hellenic subduction zone), *Sci. Rep.*, 4, 2014. <http://dx.doi.org/10.1038/srep05677>
- Tomkin, J. H., Brandon, M. T., Pazzaglia, F. J., Barbour, J. R., and Willett, S. D.: Quantitative testing of bedrock incision models for the Clearwater River, NW Washington State, *J. Geophys. Res. B: Solid Earth*, 108, 2003. <http://dx.doi.org/10.1029/2001JB000862>
- Tucker, G.E., 2004. Drainage basin sensitivity to tectonic and climatic forcing: implications of a stochastic model for the role of entrainment and erosion thresholds, *Earth Surf. Processes Landforms*, 29, 185-205, 2004. <http://dx.doi.org/10.1002/esp.1020>
- Tucker, G.E., Whipple, K.X.: Topographic outcomes predicted by stream erosion models: Sensitivity analysis and intermodel comparison, *J. Geophys. Res. B: Solid Earth*, 107, 2002. <http://dx.doi.org/10.1029/2001jb000162>
- Turowski, J.M., Lague, D., Crave, A., Hovius, N.: Experimental channel response to tectonic uplift, *J. Geophys. Res. F: Earth Surf.*, 111, 2006. <http://dx.doi.org/10.1029/2005JF000306>
- Turowski, J.M., Lague, D., Hovius, N.: Response of bedrock channel width to tectonic forcing: Insights from a numerical model, theoretical considerations, and comparison with field data, *J. Geophys. Res. F: Earth Surf.*, 114, 2009. <http://dx.doi.org/10.1029/2008JF001133>
- Tzedakis, P.: Cenozoic climate and vegetation change, in: *The Physical Geography of the Mediterranean*, edited by: Woodward, J. C., Oxford University Press, Oxford, 89-137, 2009.
- Val, P., Silva, C., Harbor, D., Morales, N., Amaral, F., Maia, T.: Erosion of an active fault scarp leads to drainage capture in the Amazon region, Brazil, *Earth Surf. Processes Landforms*, 39, 1062-1074, 2014. <http://dx.doi.org/10.1002/esp.3507>
- van Hinsbergen, D.J.J., Meulenkamp, J.E.: Neogene supradetachment basin development on Crete (Greece) during exhumation of the South Aegean core complex, *Basin Res.*, 18, 103-124, 2006.
- van Hinsbergen, D.J.J., Schmid, S.M.: Map view restoration of Aegean–West Anatolian accretion and extension since the Eocene, *Tectonics*, 31, 2012. <http://dx.doi.org/10.1029/2012tc003132>
- Waelbroeck, C., Labeyrie, L., Michel, E., Duplessy, J.C., McManus, J., Lambeck, K., Balbon, E., Labracherie, M.: Sea-level and deep water temperature changes derived from benthic foraminifera isotopic records, *Quat. Sci. Rev.*, 21, 295-305, 2002.
- Walsh, J.J., Watterson, J.: Analysis of the relationship between displacements and dimensions of faults, *J. Struct. Geol.*, 10, 239-247, 1988.

- Wegmann, K.W.: Tectonic geomorphology above Mediterranean subduction zones; northern Apennines of Italy and Crete, Greece [PhD Dissertation], Lehigh University, Bethlehem, 2008.
- Whipple, K.X.: Bedrock rivers and the geomorphology of active orogens, *Annu. Rev. Earth Planet. Sci.*, 32, 151-185, 2004. <http://dx.doi.org/10.1146/annurev.earth.32.101802.120356>
- 5 Whipple, K.X.: The influence of climate on the tectonic evolution of mountain belts. *Nat. Geosci.*, 2, 97-104, 2009.
- Whipple, K. X., DiBiase, R. A., and Crosby, B. T.: Bedrock Rivers, in: *Treatise on Geomorphology*, edited by Shroder, J.F., Academic Press, San Diego, 550-573, 2013. <http://dx.doi.org/10.1016/B978-0-12-374739-6.00254-2>
- Whipple, K.X., Hancock, G.S., Anderson, R.S.: River incision into bedrock: Mechanics and relative efficacy of plucking, abrasion, and cavitation, *Geol. Soc. Am. Bull.*, 112, 490-503, 2000. [http://dx.doi.org/10.1130/0016-7606\(2000\)112<490:riibma>2.0.co;2](http://dx.doi.org/10.1130/0016-7606(2000)112<490:riibma>2.0.co;2)
- 10 Whipple, K.X., Kirby, E., Brocklehurst, S.H.: Geomorphic limits to climate-induced increases in topographic relief, *Nature*, 401, 39-43, 1999.
- Whipple, K.X., Tucker, G.E.: Dynamics of the stream-power river incision model: Implications for height limits of mountain ranges, landscape response timescales, and research needs, *J. Geophys. Res. B: Solid Earth*, 104, 17661-17674, 1999.
- 15 <http://dx.doi.org/10.1029/1999jb900120>
- Whittaker, A.C., Attal, M., Cowie, P.A., Tucker, G.E., Roberts, G.: Decoding temporal and spatial patterns of fault uplift using transient river long profiles, *Geomorphology*, 100, 506-526, 2008. <http://dx.doi.org/10.1016/j.geomorph.2008.01.018>
- Whittaker, A.C., Boulton, S.J.: Tectonic and climatic controls on knickpoint retreat rates and landscape response times, *J. Geophys. Res. F: Earth Surf.*, 117, 2012. <http://dx.doi.org/10.1029/2011jf002157>
- 20 Whittaker, A.C., Cowie, P.A., Attal, M., Tucker, G.E., Roberts, G.P.: Bedrock channel adjustment to tectonic forcing: Implications for predicting river incision rates, *Geology*, 35, 103-106, 2007. <http://dx.doi.org/10.1130/g23106a.1>
- Whittaker, A.C., Walker, A.S.: Geomorphic constraints on fault throw rates and linkage times: Examples from the Northern Gulf of Evia, Greece, *J. Geophys. Res. F: Earth Surf.*, 120, 137-158, 2015. <http://dx.doi.org/10.1002/2014JF003318>
- 25 Willett, S.D., McCoy, S.W., Perron, J.T., Goren, L., Chen, C.-Y.: Dynamic Reorganization of River Basins, *Science*, 343, 2014. <http://dx.doi.org/10.1126/science.1248765>
- Wobus, C., Whipple, K.X., Kirby, E., Snyder, N., Johnson, J., Spyropolou, K., Crosby, B., Sheehan, D.: Tectonics from topography: Procedures, promise, and pitfalls, *Geological Society of America Special Papers*, 398, 55-74, 2006. [http://dx.doi.org/10.1130/2006.2398\(04\)](http://dx.doi.org/10.1130/2006.2398(04))
- 30 Yanites, B.J., Ehlers, T.A., Becker, J.K., Schnellmann, M., Heuberger, S.: High magnitude and rapid incision from river capture: Rhine River, Switzerland, *J. Geophys. Res. F: Earth Surf.*, 118, 1060-1084, 2013. <http://dx.doi.org/10.1002/jgrf.20056>

Zachariasse, W.J., van Hinsbergen, D.J.J., Fortuin, A.R., Mass wasting and uplift on Crete and Karpathos during the early Pliocene related to initiation of south Aegean left-lateral, strike-slip tectonics, *Geol. Soc. Am. Bull.*, 120, 976-993, 2008. <http://dx.doi.org/10.1130/b26175.1>

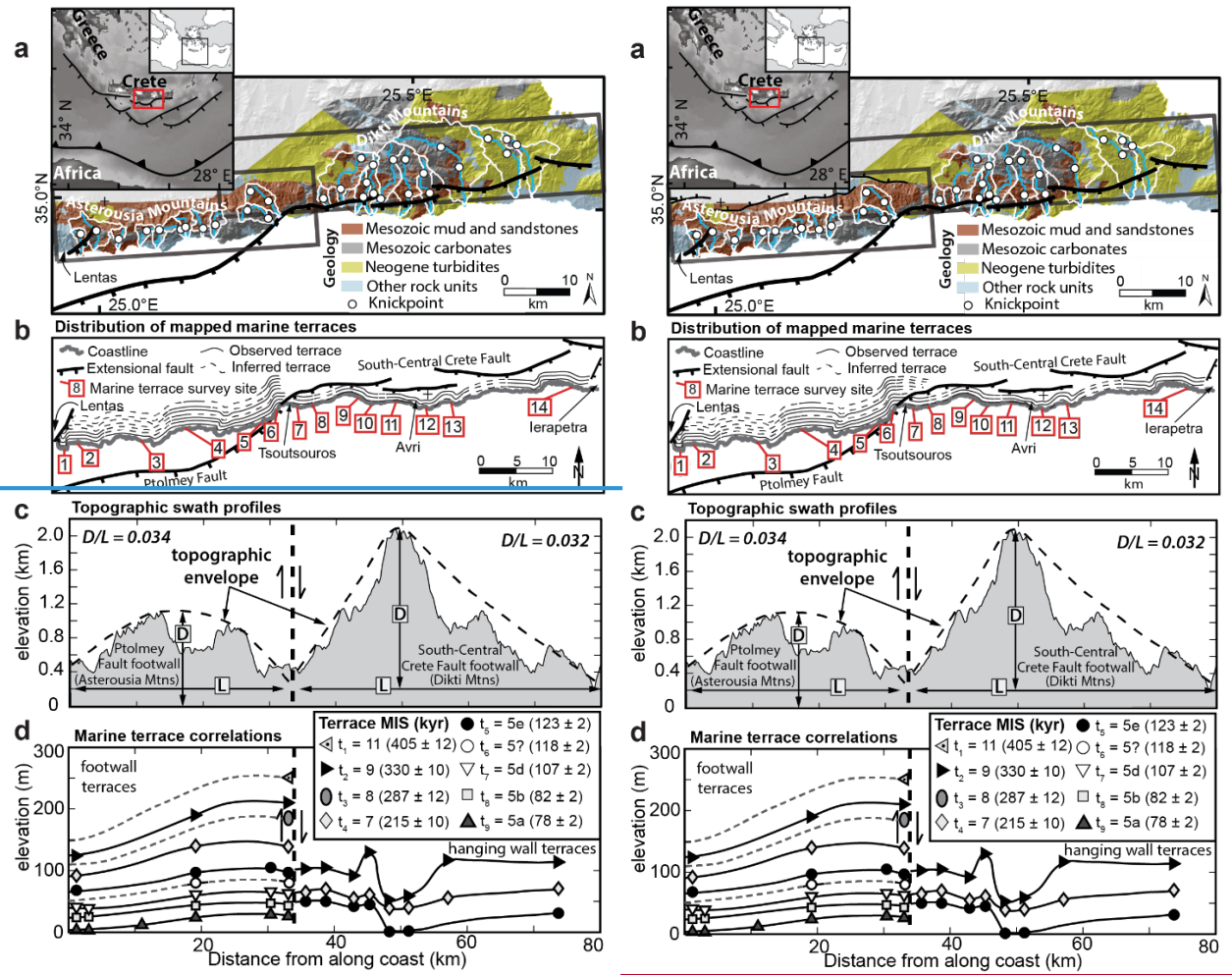


Figure 1: Inset maps show the location of the study area in south-central Crete and generalized tectonic setting. **a.** Digitized 1:50,000-scale geologic maps (Greek Institute of Geology and Mineral Exploration, 1972; 1974; 1977; 1987) with the outlines of the 21 drainage basins in thin white lines and trunk river channels in light blue. The dark gray rectangles show the locations of the elevation profiles shown in panel **c**. Active normal faults are shown as black lines with the hatch marks on the hanging wall after Gallen et al. (2014). **b.** Map of the south-central coastline of Crete with the geographic distribution of Pleistocene marine terraces. The figures are not drafted to scale, such that the vertical separation between terraces is relative. Sites 1 – 14 are the marine terrace survey sites from Gallen et al. (2014). The locations of some of the major towns and faults are shown. **c.** Maximum topography of south-central Crete as determined by swath profiles taken along the Asterousia and Dikti Mountains (see figure 1a for location). Dashed lines indicate the profile of maximum displacement as determined by correlation of the highest peaks in the respective fault blocks. The thick vertical dashed line indicates the location and sense of motion for an active extensional fault, the South-Central Crete fault. **d.** Terrace correlations for the south-central coastline of Crete (Gallen et al., 2014).

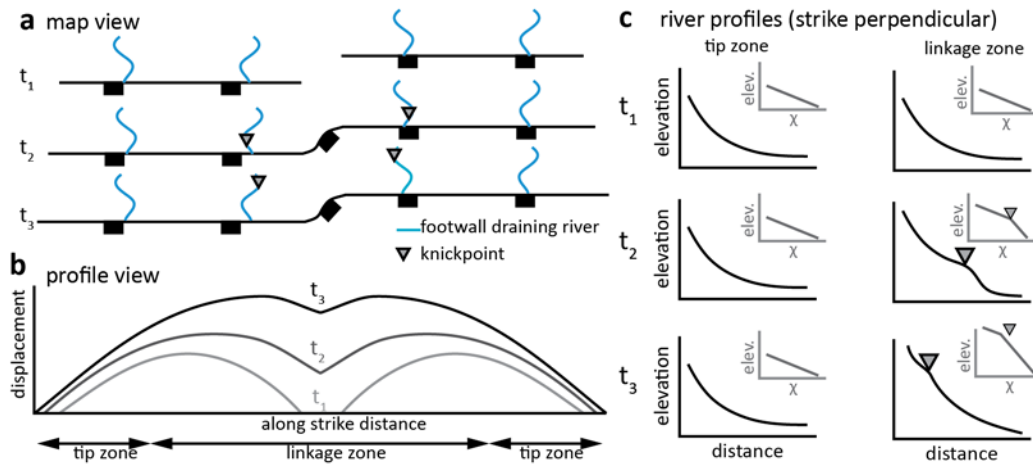


Figure 2: Conceptual model for river profile response to growth and linkage of adjacent normal faults. **a.** map view of linkage history. Knickpoints form near the linkage zone due to the rapid increase in uplift rate following linkage of two previously independent faults. **b.** along strike profiles showing the cumulative displacement history resulting from linkage of the normal faults. **c.** the predicted response of footwall river profiles in the tip and linkage zones. Rivers in the tip zone will experience little change in relative uplift rate; whereas those in the linkage zone will experience a rapid increase in the rate of uplift. The increase in uplift rate will result in the formation of a knickpoint that migrates upstream over time. The knickpoint is identified as a break in slope in a plot of the transformed distance variable, χ , versus elevation.

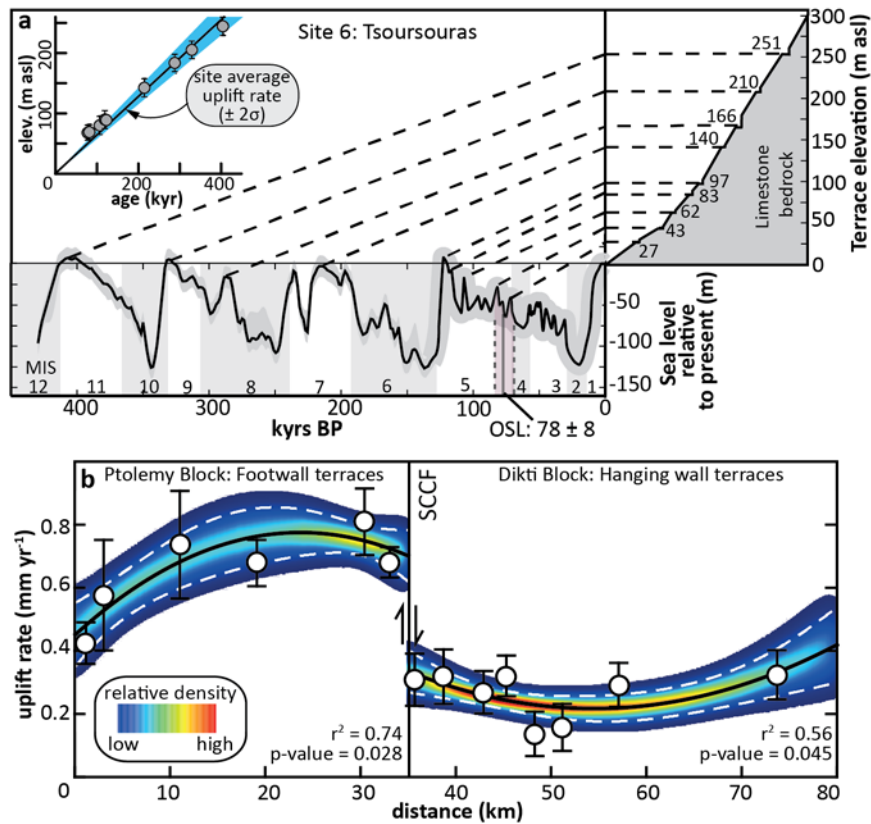


Figure 3: a. Correlation of the Tsoutsouras (a – site 6; figure 1b) terrace sequences to the Late Quaternary global sea level curve (after Gallen et al., 2014). The 0 to 125 kyr sea level curve was compiled from Lambeck and Chappell (2001), while the 125 to 450 kyr segment is from Waelbroeck et al. (2002). Marine isotope stage (MIS) boundaries are from Lisiecki and Raymo (2005). Each terrace sequence is anchored to the sea level curve with an optically simulated luminescence (OSL) burial age of fine sand collected from marine terrace deposits. The Tsoutsouras sequence shows the OSL age of the lowest terrace in the sequence from Gallen et al. (2014). Inset diagrams show the total uplift versus estimated terrace age ($\pm 2\sigma$) and site average uplift rate from the Monte-Carlo regression analysis (dashed back line) with 2σ uncertainties (blue polygon). For this site the average uplift rate is $0.65 \pm 0.08 \text{ mm yr}^{-1}$. **b. Post-fault linkage** Site average uplift rates ($\pm 2\sigma$) are displayed as white circles. The coastal uplift model is shown as the black line and the white dashed lines depict the $\pm 2\sigma$ uncertainties. The colored background shows the relative density of regression paths from the Monte-Carlo analysis. The location and sense of motion of the South-Central Crete fault (SCCF) is shown.

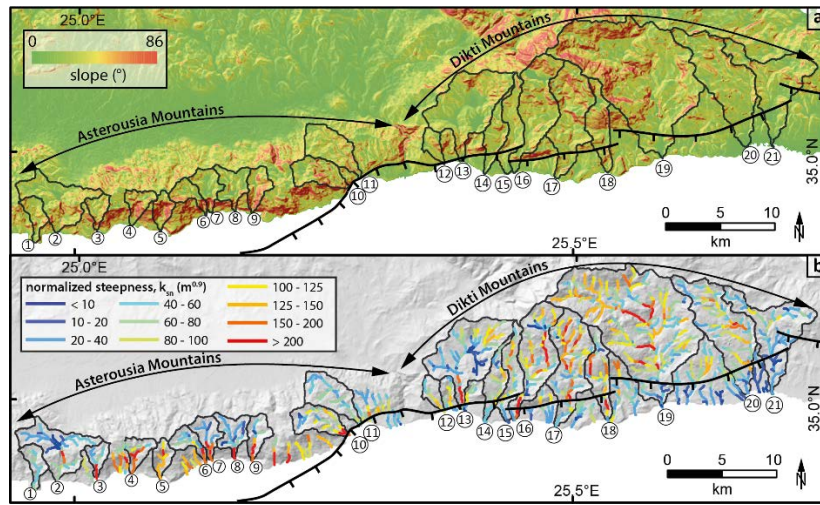


Figure 4: **a.** map of the slope distribution overlain with the location of active faults and the 21 drainage basins analyzed in this study (black polygons). **b.** normalized steepness index (k_{sn}) map of the channels that drain $> 0.1 \text{ km}^2$ area for the 21 basins investigated in this study.

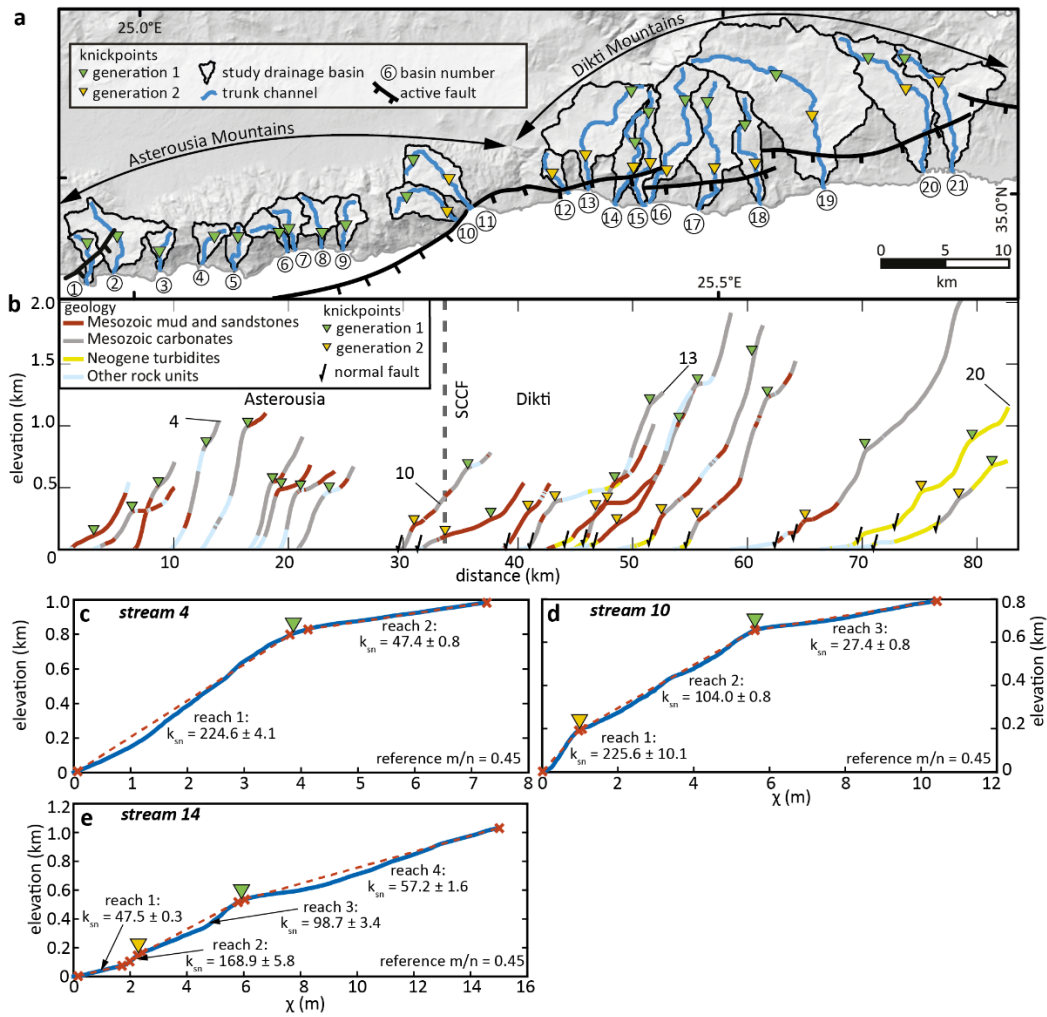


Figure 5: **a.** shaded relief map showing the location of the 21 drainage basins, trunk river channels and fluvial knickpoints identified in this study. **b.** trunk channel river profiles for the 21 basins of this study plotted versus outlet distance from the town of Lentas. The rock-type over which each river flows is shown as well as the major fluvial knickpoints identified during this study. **c-e.** Typical examples of χ versus elevation plots for rivers in south-central Crete (thick blue lines). Knickpoints are shown as triangles and the dashed red lines show the linear regressions used to determine reach specific normalized channel steepness index (k_{sn}).

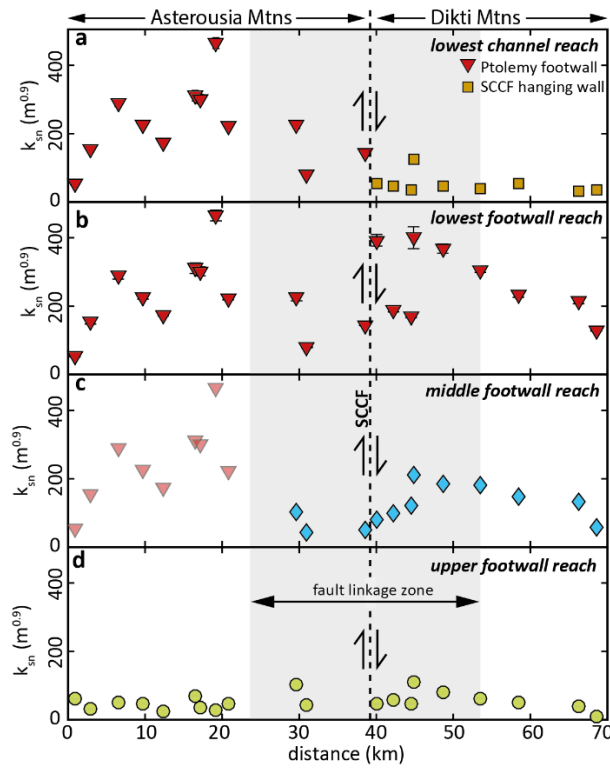


Figure 6: Normalized steepness index (k_{sn}) for channel segments bound by knickpoints. The location where the South-Central Crete fault (SCCF) separates river channels in the footwall and hanging wall is shown as the vertical dashed line. **a.** data for the lowest river reaches. Note that for basins 1 – 12 the lowest reach is in the fault footwall, whereas for basins 13 – 21 the lowest reach is in the fault hanging wall. **b.** the normalized steepness index for the lowest river reaches in the both footwalls. **c.** data for the middle reach for rivers that contain two knickpoints (basins 10 – 12) and lowest reach for rivers with only 1 knickpoint (basins 1 – 9). **d.** the normalized steepness index for the river reaches above the highest knickpoints.

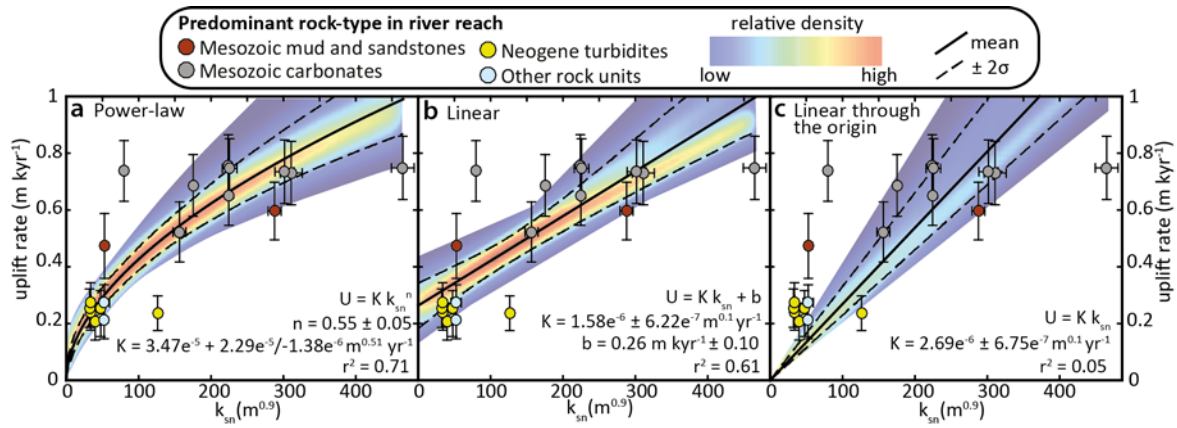


Figure 7: Plots of the normalized steepness index (k_{sn}) for the lowest river reaches (fig. 6a) versus modeled uplift rate from marine terrace (fig. 3b). The predominant rock-type underlying each river reach is noted. Each panel shows the mean (solid black line), $\pm 2\sigma$ uncertainties (dashed black lines), and relative path density (colored background) from a bootstrap regression analysis using 1000 trials. Regressions are used to calibrate parameters in the stream power incision model under different assumptions and are only valid based on the condition that each river reach is eroding at the same rate as local rock uplift. **a.** A power-law regression, **b.** unconstrained linear regression, and **c.** linear regression forced through the origin. All parameter uncertainties are presented as $\pm 2\sigma$.

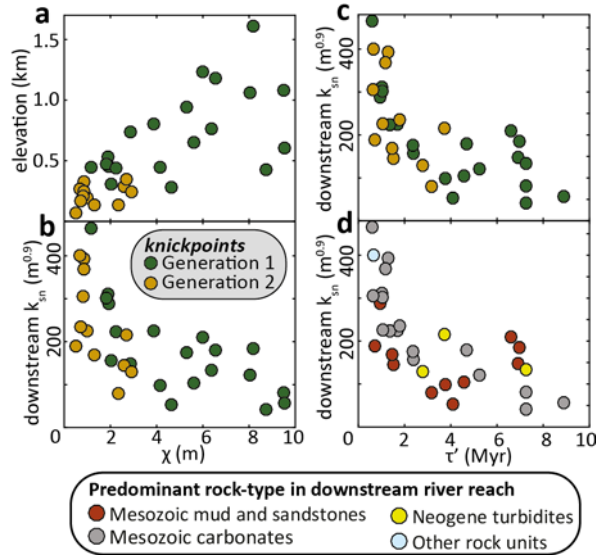


Figure 8: Plots of major knickpoint metrics from trunk channels in south-central Crete. **a.** χ versus elevation for generation-1 and 2 knickpoints. The stream power incision model predicts knickpoints from a common origin will remain at the same χ as they travel upstream provided that $n = 1$ and erodibility and drainage area are constant in space and time. **b.** χ versus k_{sn} for generation-1 and 2 knickpoints. Note that for each generation there is an apparent weak inverse correlation between χ and k_{sn} . **c.** τ' versus k_{sn} for generation-1 and 2 knickpoints. **d.** same data as c, but each point is colored according to the predominant rock type on the next downstream reach.

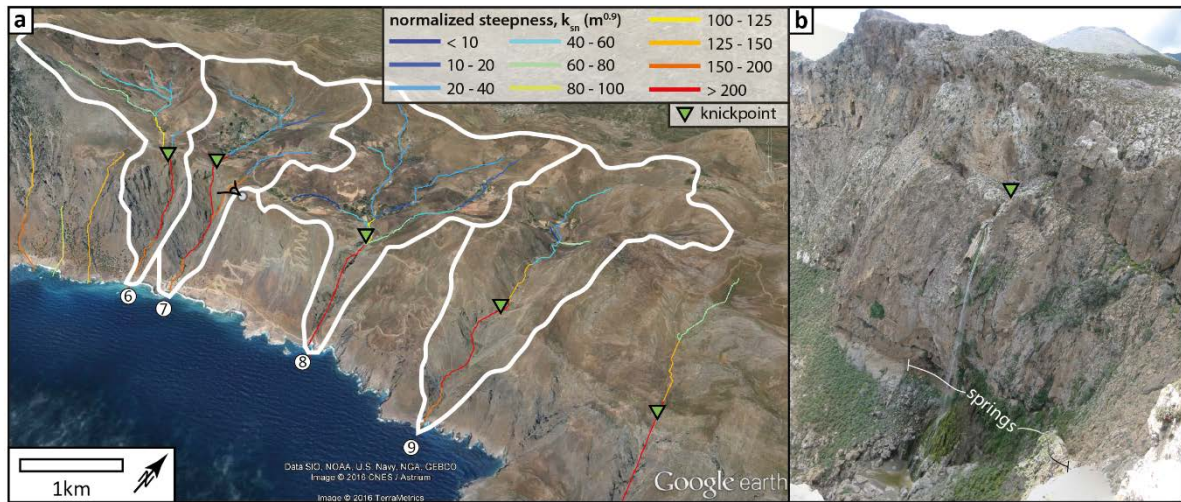


Figure 9: **a.** Perspective Google earth image of basins 6 – 9 (white outlined polygons) with normalized steepness index (k_{sn}) of channels draining areas $> 0.1 \text{ km}^2$. Channels with $k_{sn} > 200 \text{ m}^{0.9}$ are commonly associated with vertical waterfall reaches. **b.** photograph of vertical waterfall from basin 7. The location of the photo is shown in a. Location of springs is noted.

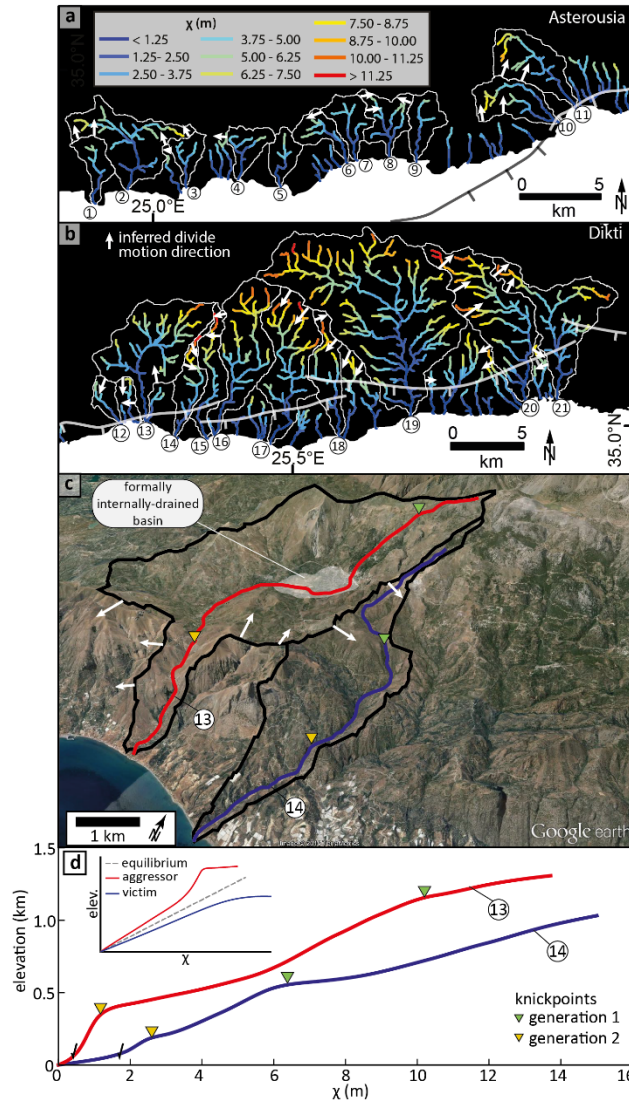


Figure 10: a, b. χ -maps of the Asterousia (a) and Dikti (b) mountains for rivers draining areas $>0.1 \text{ km}^2$. Drainage basin divides are noted by the white polygons and the interpreted direction of divide motion, based on local contrasts in χ across drainage divides, is denoted by the white arrows. c. Google Earth image of basins 13 and 14 with the trunk river channels shown by the red and blue lines, respectively. The interpreted direction of divide motion is noted by the white arrows. d. χ -elevation plots for the trunk channels in basins 13 and 14. Note the low χ values for a given elevation for basin 13, relative to basin 14. Inset shows the predicted shifts in χ for a river gaining drainage area (red – aggressor) and a river losing drainage area (blue – victim).