

Response to Reviewer Comments: *Reviewer #1*

Journal: ESurf

Title: Quantifying uncertainty of remotely sensed topographic surveys for ephemeral gully channel monitoring

Author(s): Robert R. Wells et al.

MS No.: esurf-2017-3

MS Type: Research article

Special Issue: 4-D reconstruction of earth surface processes: multi-temporal and multi-spatial high resolution topography

Interactive comment on "Quantifying uncertainty of remotely sensed topographic surveys for ephemeral gully channel monitoring" by Robert R. Wells et al.

Anonymous Referee #1

Received and published: 20 February 2017

The paper is interesting but in its present form, and based on the comments highlighted below, should be modified to improve the readability. The ideas could be interesting for the scientific communities, the methods and the assumptions resulted valid, but I suggest to improve some aspects of the analysis, the description of experiments and calculation. The reproduction of the experiment should be very difficult with the paper in this form. The conclusions resulted too general and no information repeatable and useful were provided. The authors should give proper credit to related work and the discussion (and conclusion) should clearly indicate their own new/original contribution. Therefore I suggest to improve the structure of the paper for a better reading, the discussion to compare the results obtained in the paper to others recent paper, the conclusions have to be enlarged because in present form resulted very insignificant. I have highlighted many of these instances below in the specific comments. For the language, I suggest to verify the comma in the text. All the formulae, figures and tables have to be verified. I highlighted some corrections, but probably my suggestions are not complete. I suggest to improve the references considering some recent paper that compared different survey technology for erosion studies.

Specific Comments (obtained from RC1-supplement):

P1L25: I suggest to improve the introduction and the discussion with more recent studies. For example:

Di Stefano, C., Ferro, V., Palmeri, V., Pampalona, V., Agnello, F., (2017) Testing the use of an image-based technique to measure gully erosion at Sparacia experimental area. *Hydrological Processes*, 31 (3), pp. 573-585.

Hayas, A., Vanwallegem, T., Laguna, A., Penã, A., Giráldez, J.V., (2017) Reconstructing long-term gully dynamics in Mediterranean agricultural areas. *Hydrology and Earth System Sciences*, 21 (1), pp. 235-249.

Smith M.W., Vericat D., (2015) From experimental plots to experimental landscapes: Topography, erosion and deposition in sub-humid badlands from Structure-from-Motion photogrammetry. *Earth Surface Processes and Landforms*, 40 (12): 1656-1671.

Vinci, A., Todisco, F., Brigante, R., Mannocchi, F., Radicioni, F., (2017) A Smartphone camera for the Structure from Motion reconstruction for measuring soil surface variations and soil loss due to erosion. *Hydrology Research*, in press
Vinci, A., Brigante, R., Todisco, F., Mannocchi, F., Radicioni, F., (2015) Measuring rill erosion by laser scanning. *Catena*, 124, pp. 97-108.

Vinci, A., Todisco, F., Mannocchi, F., (2016) Calibration of manual measurements of rills using Terrestrial Laser Scanning. *Catena*, 140, pp. 164-168.

Wheaton, J.M., Brasington, J., Darby, S.E. and Sear, D.A., (2010) Accounting for uncertainty in DEMs from repeat topographic surveys: improved sediment budgets. *Earth Surf. Process. Landforms*, 35: 136–156. doi:10.1002/esp.1886

Zheng, F., Xu, X., Qin, C., (2016) A Review of Gully Erosion Process Research. *Nongye Jixie Xuebao/Transactions of the Chinese Society for Agricultural Machinery*, 47.

We agree and have updated the manuscript, especially the introduction and discussion, to include some of the suggested references listed by the reviewer, as well as other pertinent sources.

Casalí, J., Loizu, J., Campo, M.A., De Santisteban, L.M., and Álvarez-Mozos, J.: Accuracy of methods for field assessment of rill and ephemeral gully erosion, *Catena*, 67(2): 128-138, 2006.

Casalí, J., Giménez, R., and Campo-Bescos, M.A.: Gully geometry: What are we measuring?, *The Soil*, 1: 509-513, 2015.

Di Stefano, C., Ferro, V., Palmeri, V., and Pampalona, V.: Testing the use of an image-based technique to measure gully erosion at Sparacia experimental area, *Hydrol. Proc.*, 31: 573-585, doi: 10.1002/hyp.11048, 2017.

- Eitel, J.U.H., Williams, C.J., Vierling, L.A., Al-Hamdan, O.Z., and Pierson, F.B.: Suitability of terrestrial laser scanning for studying surface roughness effects on concentrated flow erosion processes in rangelands, *Catena*, 87: 398-407, 2011.
- Gómez-Gutiérrez, A., Schnabel, S. Berenguer-Sempere, F., Lavado-Contador, F., Rubio-Delgado, J. Using 3D photo-reconstruction methods to estimate gully headcut erosion, *Catena*, 120, 91-101, 2014.
- Micheletti, N., Chandler, J.H., Lane, S.N.: Investigating the geomorphological potential of freely available and accessible structure-from-motion photogrammetry using a smart phone, *Earth Surf. Process. Landforms*, 40(4): 473-486, 2015.
- Smith, M.W. and Vericat, D.: From experimental plots to experimental landscapes: topography, erosion and deposition in sub-humid badlands from structure-from-motion photogrammetry, 40: 1656-1671, 2015.
- Vinci, A., Brgante, R., Todisco, F., Mannocchi, F., and Radicioni, F.: Measuring rill erosion by laser scanning, *Catena*, 124: 97-108. doi: 10.1016/j.catena.2014.09.003, 2015.
- Wheaton, J.M., Brasington, J., Darby, S.E., and Sear, D.A.: Accounting for uncertainty in DEMs from repeat topographic surveys: improved sediment budgets, *Earth Surf. Process. Landforms*, 35: 136-156, 2010.

P2L11: Why? What's the problem?

With traditional airborne LiDAR, point collection is 12-30 points per square meter (depending on flight height). The mechanics of rill and ephemeral gully erosion require much finer resolution information. The DEM will be too smooth and will miss the position of the channel as well as morphology of the channel.

P2L40: at the same time? together?

During the same period. Each platform was run independent of the others at different times on the same day. (P3L17-22)

"Furthermore, measurements of the same site using identical methods and equipment, but performed at different time periods can also lead to three-dimensional registration errors. Therefore, the scope of this work was to evaluate multiple survey techniques and provide a framework for temporal studies of ephemeral gully channels. Three surveying platforms, with varying parameters, were independently evaluated for locational accuracy and applicability in generating information for model development/validation. The objectives of this study are twofold: to quantify the overall accuracy of the different survey configurations and to develop practical guidelines for the design and implementation of future ephemeral gully monitoring studies."

P3L3: could be very interesting, but where are?

The recommendations are outlined in Sec 4.2.

"Long-term photogrammetric monitoring of ephemeral gullies should be performed with systems and procedures that: (1) Provide a minimum sampling density to capture the overall and local terrain characteristics based upon study objectives (i.e. temporal headcut migration process understanding may require sub-centimeter resolution data, while temporal channel meander process understanding may only require decimeter resolution) (James and Robson, 2012; Gómez-Gutiérrez et al., 2014). The planning phase of the project must consider the physical characteristics of the process to be investigated, study site physical and environmental variables, and the available hardware and software. (2) Utilize static ground control points visible in comparable photo pairs in all time-step surveys (i.e. fixed known points within the scene provide checks to assure proper three-dimensional registration of temporal data) (e.g. Smith and Vericat, 2015). An organized scheme for control points must be realized for detailed multi-temporal quantitative assessment. Small variations in alignment within temporal surveys will introduce error into length, width, cross-sectional area and volume estimates (e.g. Casalí et al., 2015). Repeated realizations of GCP coordinates will always reduce error in survey solutions. (3) Collect the same number of photo pairs using the same sensor and with the same orientation in all time-step surveys (i.e. data collection strategies should not vary temporally and new sensors must be carefully calibrated to preexisting datasets). Consistency in photo collection (i.e. scheduling and no. of photo pairs) will enhance the comparison of temporal solutions (Gómez-Gutiérrez et al., 2014). Also, consider site visits at a particular time of day. (4) Process and generate photogrammetric solutions using the same software package and similar input processing parameters. And, a calibrated camera will always yield better solutions."

P3L27: Uppercase, verify in the text.

We agree and have made the correction.

P4L3: This technique was widely used, it is necessary this explanation? In the paper were used techniques less used and probably more interesting. I suggest a briefly description of the Terrestrial LIDAR. Probably the authors could be some photos of the equipment used for the paper.

The TLS was used as the “reference” and, this distinction required a more detailed description.

P6L23-24: where are the results of this analysis?

The results of this analysis and a more detailed description have been added to the manuscript. (P7L9-24; P9L8-20; Figure 8) Figure 8 is new to the revision.

“Two metrics were used to quantify the spatial pattern distribution: distances between events and between events and random points not in the pattern (void space). The G-Function, $G(r)$, defined as the cumulative frequency distribution of nearest-neighbor distances (Lloyd, 2010), provides the conditional probability that the distance between points (event-event) is less than the point distance threshold (r). The empirical distribution is obtained for each distance r by counting the number of points at distances less than or equal to r from each point within the AOI. The theoretical distribution is obtained by assuming a completely random pattern with density (λ ; estimated by the ratio of total number of points, divided by the area of the AOI), modeled as a Poisson process. Empirical values closer to the theoretical values indicate a random distribution, empirical values above the theoretical values indicate clustering, and empirical values below the theoretical values indicate a more regular distribution (Bivand et al., 2008). The F-Function, $F(r)$, defined as the cumulative frequency distribution of the distance to the nearest point in the AOI from random locations not represented within the AOI (Lloyd, 2010), provides the probability of observing at least one point (event) closer than r to an arbitrary point within the AOI (“empty space” or “void” distances). Estimated and theoretical distributions are obtained similar to that of the G-function. The interpretation of graphed observed versus theoretical values indicates a regular pattern when the observed is above the theoretical values and clustering when it is below (Bivand et al., 2008). These point pattern analyses were performed using the Spatstat package in the R software package (Baddeley and Turner, 2005; Bivand et al., 2008).

Furthermore, points with the same X, Y and Z to the fifth decimal place were removed from the LiDAR dataset, indicating collection of redundancy information.”

“Point pattern analysis was examined using the G- and F-functions (Figure 8). Each tests through an assumption of completely spatially random (homogeneous Poisson process), although interpretations for clustering and regularity are in opposition for each test (i.e. regular point spacing outcome for the G-function is below gray confidence bounds and for the F-function it is above). At first, the confidence bounds (gray envelope bounding the theoretical values (red dash line)) show that the Fixed_122 has a sparse point count. Looking at the G-function results, the data are clustered at distances of 0.02 m (Fixed_122), 0.002 m (Quad_20) and 0.001 m (Grd_8A), then regularly distributed. This indicates that small distances occur less often than expected under the assumption of spatial randomness. The F-function results say that the data are randomly distributed to 0.06 m (Fixed_122) and 0.025 m (Quad_20), and clustered for Grd_8A (i.e. on short distances, fewer points are encountered than for a random pattern); although, the scale of r should be acknowledged ($< 3\text{ mm}$). All twelve datasets yielded observed G-function values below the theoretical values, indicating a regular sampling pattern. The terrestrial photogrammetric surveys did show slight clustering at small distances ($< 3\text{ mm}$). Therefore, based on these metrics, a regular sampling pattern was observed, indicating that all locations within the study area were sampled with a similar sampling intensity (no areas where over sampled nor under-sampled) for all twelve datasets in this study.”

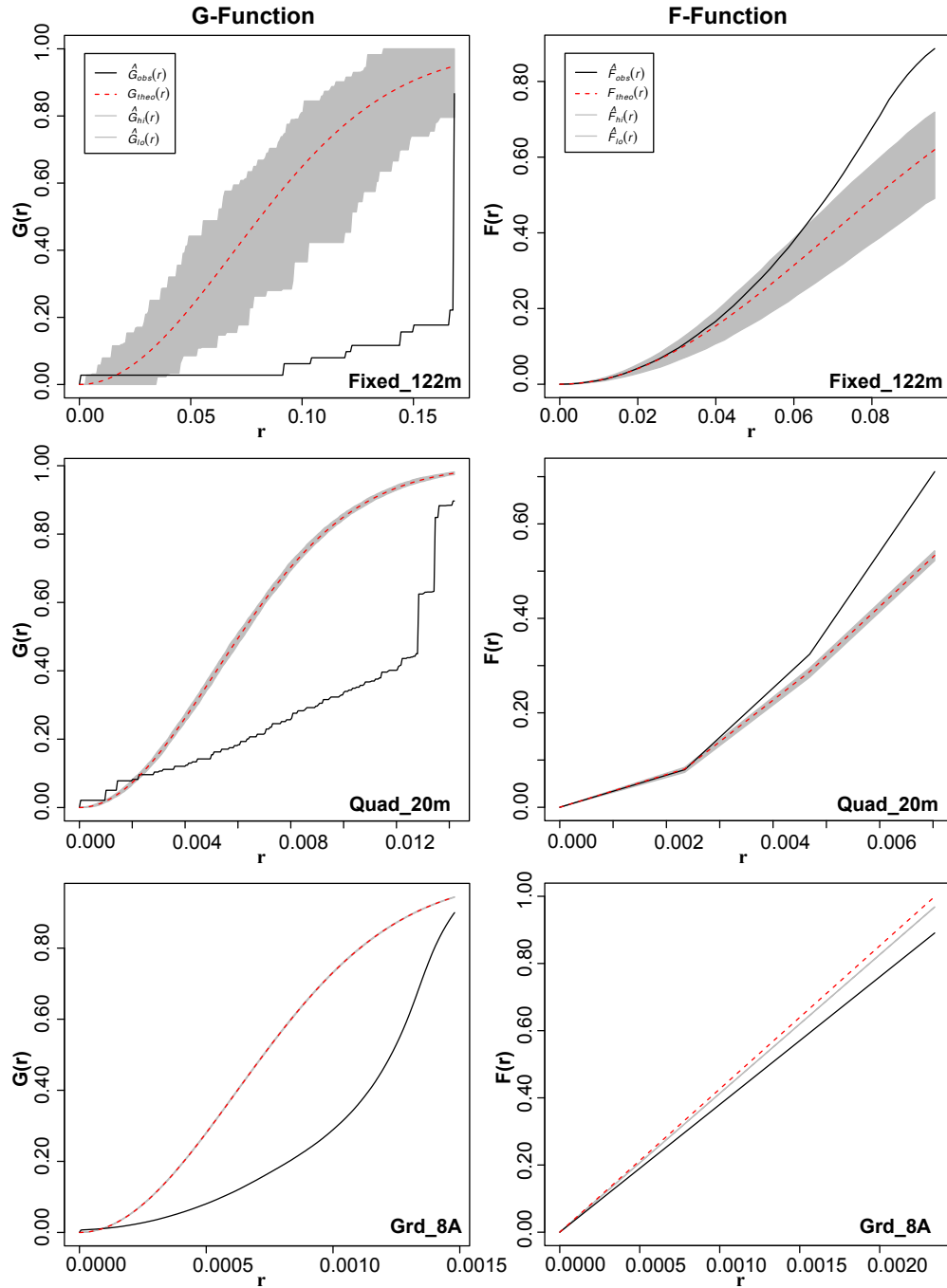


Figure 8: Results of G-Function and F-Function analysis for Fixed_122m, Quad_20m, and Grd_8A datasets.

P7L20: Verify the units of the equations in all the paper.

The reviewer is correct. In equation 4 and 5, the elevation difference is multiplied by the cell area. Here, the cell area is $2.5E-5$ square meters. The equations have been corrected. (P8L11-14)

P7L22: what is cs? It is cz?

As a continuance from the previous comment, the variable in question is ca , the cell area. The change has been made. (P8L13)

P8L5: In this table were reported the evaluation category, not the score.

The reviewer is correct. It was not intended to provide the scores within the materials section. Table 7 has been moved to Table 2 and provides a description of the metric tests as stated within the text of this section. Scores are provided in Table 8 within the results section.

P8L10: I suggest to better explain the influence of the sampling intensity. I suggest to insert a classification of “low”, “medium”, “high” sampling intensity. Therefore, in this paragraph should be reported the results of the point pattern analysis.

We agree and apologize for the confusion concerning the point pattern analysis. As mentioned in a previous comment, we enhanced the section to further describe the F- and G-functions. (P7L9-24; P9L8-20; Figure 8) However, we do not share the reviewer’s enthusiasm for ranking the intensity (i.e. low, medium and high).

P8L12: How? Probably a comment of a figure 11 or a better explanation could be useful.

Further discussion of the cross-section information is provided in Sec 3.4. (P10L33-P11L5) Figure 11 is now Figure 12.

“In the gridded elevation evaluations (Min, Max, Mean; Table 5; Figure 12), absolute difference from LiDAR was less than 0.02%, and these differences were only seen in the fixed-wing flights. The variance (i.e. roughness), however, does show that absolute differences from LiDAR were 131% (Fixed_122), 23% (Fixed_61), and 9% (Ground_4A). Comparing elevation information (Table 7; Figure 12) between photogrammetric cross-sections and LiDAR cross-sections through linear regression, indicates a coefficient of determination larger than 0.98 for all datasets, excluding the two fixed-wing flights. The standard error of this regression was less than 10 mm for Quad_20, Quad_35, Ground_2B, Ground_4B, Ground_4C, Ground_6A, and Ground_8A. Following that, Ground_2A and Ground_4A had a standard error of approximately 17 mm and the two fixed wings had a standard error of 25 mm. The average area percent difference for all cross-sections were within 1.5%, while the two fixed wings had 3% (Fixed_61) and 8% (Fixed_122). It is important to mention that the range of area percent difference is within $\pm 2\%$, while the fixed-wing systems had up to 15% percent difference. The error is huge for instance if this dataset was intended to be used for the purpose of development/calibration/validation of a soil erosion model.”

The effect of sampling intensity can be explained as this: let us say you have one square meter and in one survey you collect 10 points and in another survey you collect a thousand points. If the surface of this square meter is a plane then both surveys will tell you the same thing; however, if the surface is rough, the survey with 10 points will not help you describe the terrain, as you may only collect peak or trough values, where the 1000 point survey will more effectively convey the characteristics of the terrain, the micro-topography (see papers by Haubrock et al., 2009 and Eitel et al., 2011 for discussions of surface roughness). So, if the surface is rough, low point counts will bias the volume estimates. Eitel, J.U.H., Williams, C.J., Vierling, L.A., Al-Hamdan, O.Z., Pierson, F.B.: Suitability of terrestrial laser scanning for studying surface roughness effects on concentrated flow erosion processes in rangelands, Catena, 87: 398-407, 2011.

Haubrock, S.-N., Kuhnert, M., Chabrilat, S., Güntner, A., Kaufmann, H.: Spatiotemporal variations of soil surface roughness from in-situ laser scanning, Catena, 79: 128-139, 2009.

P8L27: What’s mean? Clarify.

The two fixed-wing flights could not be adjusted by the methods described earlier within the text (see Sec. 2.3), since neither point cloud contained points on the channel GCPs. Therefore, the seemingly large deviation in elevation difference may be simply an alignment issue that we could not resolve/control or it is a bias we introduced in the raster process, since the results of the point analysis show that the fixed-wing data is clustered below 20 mm.

P10L3: I suggest to compare the results obtained with other recent papers.

We agree and have included appropriate references within the discussion for comparison.

Casali, J., Giménez, R., and Campo-Bescos, M.A.: Gully geometry: What are we measuring?, The Soil, 1: 509-513, 2015.

Di Stefano, C., Ferro, V., Palmeri, V., and Pampalone, V.: Testing the use of an image-based technique to measure gully erosion at Sparacia experimental area, Hydrol. Proc., 31: 573-585, doi: 10.1002/hyp.11048, 2017.

Gómez-Gutiérrez, A., Schnabel, S. Berenguer-Sempere, F., Lavado-Contador, F., Rubio-Delgado, J. Using 3D photo-reconstruction methods to estimate gully headcut erosion, Catena, 120, 91-101, 2014.

Smith, M.W. and Vericat, D.: From experimental plots to experimental landscapes: topography, erosion and deposition in sub-humid badlands from structure-from-motion photogrammetry, 40: 1656-1671, 2015.

Wheaton, J.M., Brasington, J., Darby, S.E., and Sear, D.A.: Accounting for uncertainty in DEMs from repeat topographic surveys: improved sediment budgets, *Earth Surf. Process. Landforms*, 35: 136-156, 2010.

P10L20: Where is the Sec. 4.2.1?? For the point pattern analysis see the comments reported above.

Dyslexia. The reference should have been 2.4.1. We made the correction and enhanced the explanation for the point pattern analysis (P7L9-24; P9L8-20; Figure 8).

P11L1: I suggest to improve the guidelines for give more useful information.

The guidelines were intended to be broad, as many will not be interested in sub-centimeter characterizations. However, we did add some more information from our experiences to enhance the section. Because each individual will study a different problem, it is not possible to develop a cookbook that works for everyone. Instead, we described a path to minimize problems in processing and future temporal comparisons. We have added more details to our recommendations in this section. Our main message concerns GCPs and consistency. (P12L36-P13L12)

“Long-term photogrammetric monitoring of ephemeral gullies should be performed with systems and procedures that: (1) Provide a minimum sampling density to capture the overall and local terrain characteristics based upon study objectives (i.e. temporal headcut migration process understanding may require sub-centimeter resolution data, while temporal channel meander process understanding may only require decimeter resolution) (James and Robson, 2012; Gómez-Gutiérrez et al., 2014). The planning phase of the project must consider the physical characteristics of the process to be investigated, study site physical and environmental variables, and the available hardware and software. (2) Utilize static ground control points visible in comparable photo pairs in all time-step surveys (i.e. fixed known points within the scene provide checks to assure proper three-dimensional registration of temporal data) (e.g. Smith and Vericat, 2015). An organized scheme for control points must be realized for detailed multi-temporal quantitative assessment. Small variations in alignment within temporal surveys will introduce error into length, width, cross-sectional area and volume estimates (e.g. Casalí et al., 2015). Repeated realizations of GCP coordinates will always reduce error in survey solutions. (3) Collect the same number of photo pairs using the same sensor and with the same orientation in all time-step surveys (i.e. data collection strategies should not vary temporally and new sensors must be carefully calibrated to preexisting datasets). Consistency in photo collection (i.e. scheduling and no. of photo pairs) will enhance the comparison of temporal solutions (Gómez-Gutiérrez et al., 2014). Also, consider site visits at a particular time of day. (4) Process and generate photogrammetric solutions using the same software package and similar input processing parameters. And, a calibrated camera will always yield better solutions.”

P11L16: See the comments reported above.

See responses reported above.

Journal: ESurf

Title: Quantifying uncertainty of remotely sensed topographic surveys for ephemeral gully channel monitoring

Author(s): Robert R. Wells et al.

MS No.: esurf-2017-3

MS Type: Research article

Special Issue: 4-D reconstruction of earth surface processes: multi-temporal and multi-spatial high resolution topography

Interactive comment on "Quantifying uncertainty of remotely sensed topographic surveys for ephemeral gully channel monitoring" by Robert R. Wells et al.

A. Gómez-Gutierrez (Referee): alvgo@unex.es

Received and published: 21 February 2017

REVIEW OF THE PAPER: "Quantifying uncertainty of remotely sensed topographic surveys for ephemeral gully channel monitoring" by Wells et al.

GENERAL COMMENTS: This paper presents an interesting comparison of techniques- methods used to produce high-resolution topographic surfaces from pictures and laser. These techniques are used to reproduce the surface of an ephemeral gully. I think the results could be of interest for a broad audience, as they will increase the available datasets testing several methods to produce high-resolution topography. Before that, I suggest some modifications that could be used to improve the paper before considering its publication. I would say that these are minor revisions:

- 1) I miss some important references in the Introduction and Discussion sections, are there other papers comparing terrestrial or aerial SfM to LIDAR-LTS? This, in my opinion, may be addressed in the introduction section. Additionally, the result of these works could be used to enrich the discussion.

We agree and have added several key references to enhance the Introduction and Discussion sections of the manuscript.

Casali, J., Loizu, J., Campo, M.A., De Santisteban, L.M., and Álvarez-Mozos, J.: Accuracy of methods for field assessment of rill and ephemeral gully erosion, *Catena*, 67(2): 128-138, 2006.

Casali, J., Giménez, R., and Campo-Bescos, M.A.: Gully geometry: What are we measuring?, *The Soil*, 1: 509-513, 2015.

Di Stefano, C., Ferro, V., Palmeri, V., and Pampalone, V.: Testing the use of an image-based technique to measure gully erosion at Sparacia experimental area, *Hydrol. Proc.*, 31: 573-585, doi: 10.1002/hyp.11048, 2017.

Eitel, J.U.H., Williams, C.J., Vierling, L.A., Al-Hamdan, O.Z., and Pierson, F.B.: Suitability of terrestrial laser scanning for studying surface roughness effects on concentrated flow erosion processes in rangelands, *Catena*, 87: 398-407, 2011.

Gómez-Gutiérrez, A., Schnabel, S. Berenguer-Sempere, F., Lavado-Contador, F., Rubio-Delgado, J. Using 3D photo-reconstruction methods to estimate gully headcut erosion, *Catena*, 120, 91-101, 2014.

Micheletti, N., Chandler, J.H., Lane, S.N.: Investigating the geomorphological potential of freely available and accessible structure-from-motion photogrammetry using a smart phone, *Earth Surf. Process. Landforms*, 40(4): 473-486, 2015.

Smith, M.W. and Vericat, D.: From experimental plots to experimental landscapes: topography, erosion and deposition in sub-humid badlands from structure-from-motion photogrammetry, 40: 1656-1671, 2015.

Vinci, A., Brgante, R., Todisco, F., Mannocchi, F., and Radicioni, F.: Measuring rill erosion by laser scanning, *Catena*, 124: 97-108. doi: 10.1016/j.catena.2014.09.003, 2015.

Wheaton, J.M., Brasington, J., Darby, S.E., and Sear, D.A.: Accounting for uncertainty in DEMs from repeat topographic surveys: improved sediment budgets, *Earth Surf. Process. Landforms*, 35: 136-156, 2010.

- 2) Other important point that should be considered is DGPS. GCPs measured by a DGPS are ensuring, probably, a centimeter- level accuracy, so I suggest considering this point in the interpretation of the results.

We agree, however, the methods of GCP positioning and accuracy were not a primary focus of this manuscript. We report the error associated with the aligned datasets, assuming there are no ancillary errors in positioning. Here, we go to extreme lengths to ensure that the comparative datasets are in alignment and all comparisons stem from the locked channel GCP positions. We do agree that the error in GCP position should be reported and have added the error associated with static and kinematic collections for the unit we used in this study. (P4L12-16)

“All GCPs were surveyed using TopCon GR-3 dGPS survey equipment (TopCon Corporation, Tokyo, Japan; 10 mm horizontal and 15 mm vertical kinematic accuracy) to obtain relative position in reference to the state monument point. A static occupation (6 hrs; 3 mm horizontal and 5 mm vertical accuracy) was initiated with the base station, then all GCPs (field, channel and state monument) were surveyed with the rover (20 sec collection interval).”

- 3) In general, I consider that the text of the manuscript is well-organized but in some parts of the work there are too many sections and sub-sections, I suggest integrating some of them and this would increase the readability of the paper.

We agree and have integrated material to reduce the sub-sections. (P5L15-36)

- 4) I also miss some methodological details, please see my comments below. The order of figures and tables should be reviewed. References should be reviewed (see my comments below).

We have reordered the figures slightly and added flight details to address this issue. We reviewed and made corrections to the references.

SPECIFIC COMMENTS

Title: I understand that ephemeral gullies are, probably, not visible in satellite images but the terms "remotely sensed" could let to think in the use of this kind of info, so I recommend modifying the title to clarify this point, I suggest using "High-resolution remotely sensed".

We agree and have made the change.

“Quantifying uncertainty of high-resolution remotely sensed topographic surveys for ephemeral gully channel monitoring”

Abstract:

Lack of standards in landform surveying is due, at least in part, to the variability, complexity, etc. of relief.

We agree.

Line 17, UAVs are not a technique more a platform, the technique is SfM or classical photogrammetry, so I suggest modifying this part of the abstract.

We agree that UAV's are a platform for the technique of photogrammetry and do not see the confusion within these lines of text. “This work evaluated measurements of an ephemeral gully channel located in agricultural land using multiple independent survey techniques for locational accuracy and their applicability to generate information for model development/validation. Terrestrial and un-manned aerial vehicle-based photogrammetry platforms were compared to terrestrial LiDAR, defined herein as the reference dataset.”

In general for the text, when an acronym is written, please, the first time when you use the extended form, use capital letters.

We agree and corrected throughout the manuscript.

INTRODUCTION

L5: I guess you refer to Casali instead Casalli, by the way this reference is not in the reference list, please check.

Yes. We agree, corrected the text and added the reference.

Casali, J., Loizu, J., Campo, M.A., De Santisteban, L.M., and Álvarez-Mozos, J.: Accuracy of methods for field assessment of rill and ephemeral gully erosion, Catena, 67(2): 128-138, 2006.

L11-14: I do not completely agree, LIDAR devices are now available to be the payload of a UAV so you can get great spatial-resolutions, on the other hand you can have the desired temporal resolution for LIDAR data, you just need money to pay for that, I suggest modifying the paragraph.

We agree and provided additional information concerning UAV LiDAR. However, that element was not within the purview of this research. Money will always be an issue at the edge of science. Even with this system, you would still need the information presented herein concerning the GCPs. (P2L18-24)

“Despite the large number of studies and methods developed to quantify positional errors in traditional airborne LiDAR surveys, this type of survey does not offer the temporal and spatial resolution necessary for quantitative monitoring of small-scale geomorphological characteristics (i.e. ephemeral gullies) necessary for process description; although, recent developments in UAV LiDAR systems provide 10mm survey-grade accuracy, one million

measurements per second, and 360° Field of View (FoV), all in <1.6 kg payloads. These UAV LiDAR systems can range from \$100k to \$400k (US dollar), dependent upon level of accuracy and data collection rate (see <http://www.rieglusa.com> as an example).”

L18: using multiple scan stations is not just for that, but more for avoiding shadows and normalizing the spatial resolution.

We agree and have added information to clarify the use of multiple scanning positions for LiDAR scene capture. (See P2L28)

“Overlapping the same area by multiple scans increases the overall sampling density and assists in occlusion and shadow avoidance, while normalizing spatial resolution.”

L30: this paragraph does not flow with the rest of the introduction, you start talking about point clouds but the reader could not know why you start discussing file formats, I suggest you start talking about the typical file format recorded by TLS, LIDAR and produced by SfM and later talking about the classical use of 2.5D file formats like DEM to represent surfaces.

We agree and have added another paragraph to increase readability and help the flow. (P3L1-8)

“A particular point of interest is the general query posed by Wheaton et al. (2010) concerning real geomorphic change. With these evolving technologies, our ability to collect topographic information is seemingly limitless. At what point can we agree that the results describe “real” change over noise? The alignment of temporal-topographic elements is the most critical step when planning small-scale erosion studies (Smith and Vericat, 2015). Reliance on control points is the foundation of classical surveying. All surveys must close with a shot back to the initial occupation point. This too is the initiation of error propagation. A multitude of solutions exist for each set of photos and/or LiDAR points; however, the unique solution is bounded by the spatial and vertical positioning of the control points (Micheletti et al., 2015). Provided that alignment can be controlled, the next operation typically involves a culling process of some sort as the data shift into organized units.”

Equation 1: Does the ICP algorithm include the scale factor? I miss this in the explanation and formulation.

No. The ICP was used to rotate and translate the point clouds only. We added this information to the sentence. (P6L16-20)

“Three-dimensional locational differences between the reference plane generated using the GPS survey (black squares in **Error! Reference source not found.**4) and the planes of each surveyed dataset (LiDAR and photogrammetry) were calculated using the Iterative Closest Point (ICP) algorithm (Besl and Mckey, 1994; James and Robson, 2012; Micheletti et al., 2015) implemented in MATLAB (**MathWorks Inc., Natick, Massachusetts**) and, since no scale issues were observed, no scaling factor was implemented in the ICP.”

Section 2.2.1 I miss error estimations for the DGPS, I guess 2-3 cm, would be nice to tell the readers about that.

We agree and included the information as suggested. (P4L12-16)

“All GCPs were surveyed using TopCon GR-3 dGPS survey equipment (TopCon Corporation, Tokyo, Japan; 10 mm horizontal and 15 mm vertical kinematic accuracy) to obtain relative position in reference to the state monument point. A static occupation (6 hrs; 3 mm horizontal and 5 mm vertical accuracy) was initiated with the base station, then all GCPs (field, channel and state monument) were surveyed with the rover (20 sec collection interval).”

Section 2.2.4. I suggest including some points to support the selection of different software packages to run terrestrial and aerial photogrammetry.

We do not agree. There are far too many processing packages and there is no literature that places one product over another, so there is no need to support a processing software selection. Both are well cited within the literature and both have faults similar to other existing software packages.

Section 2.2.4.1 I miss many details here: Overlaps, number of photos, UAV model, etc., etc.

Of course. All flight parameters are now included in Section 2.2.4. (P5L16-26)

“Two UAV platforms were used to collect airborne photography (<https://www.sensefly.com/home.html>): fixed-wing (eBee) and quadrotor (albris). The fixed-wing platform had a 12 MP nadir camera (i.e. belly mount; Canon S110 RGB) and was deployed (eMotion2 v2.4.10) to capture the entire field boundary (Figure 2A) by throwing the craft in the air, then the craft flies, captures images and lands itself. Deployment software parameters were: Altitude (117 m, 58 m); Resolution (4.1 cm, 2 cm); Latitude Overlap (80%, 50%), Longitude Overlap (80%, 50%), Image Collection (356, 569), and Image Format (CR2(RAW)) for the two respective flights. The quadrotor platform had a 38 MP camera

mounted within an 180° vertical range head and was deployed (eMotionX v1.3.0) to capture both, the extent of the gully within the field and specific points of interest (i.e. gully cross sections; Gesch et al. 2015; Wells et al. 2016). The quadrotor was deployed through mission planning software. The craft takes off, flies and captures images, then lands itself. Deployment software parameters were: Altitude (35 m, 20 m); Resolution (0.7 cm, 0.5 cm), Latitude Overlap (75%, 75%), Longitude Overlap (80%, 80%), Image Collection (96, 146), and Image Format (dng(RAW)) for the two respective flights. During the flights, winds from the southeast ranged from 7 to 10 m/s and skies were clear.”

Section 2.4.1 Sampling intensity I have doubts here about the strategy used, did the authors sampled the number of points using a planimetric (XY) grid?

Yes.

In this case, they need to support this strategy. I think that estimations of volumetric point densities and 3D representations of this variable would work well in this case as. Problems using a grid in this case are important when representing vertical walls or headcut walls where points are distributed in the Z-coordinate direction, in this case, if you use a grid you will have a high value for the sampling intensity; however, if you have a look to the point cloud, in some cases, you will realize that sampling intensity can be low.

We understand the point of contingency and agree with your assessment of 3D point distributions in the Z-coordinate direction; however, this inadequacy does not preclude the point sampling strategy using a planimetric grid. We submit that overhanging walls do not exist within the study channel examined here and further submit that all point counts were carried out prior to data gridding. In this study, the water film within the channel posed a problem, so we removed this area from consideration.

Figure 10: better explanations with A)..., B)..., C)..., what kind of information was used?

We regret the confusion. In an earlier version of the manuscript, we attempted to discuss the material as predicted (photogrammetry) and observed (LiDAR), and this figure made it through without correction. In the revision, we corrected the figure by stipulating the data within the panel (i.e. (a), (b) and (c)) as suggested. The figure represents a bit of scripting we use as a visualization tool. In the revision, this Figure 10 is Figure 11.

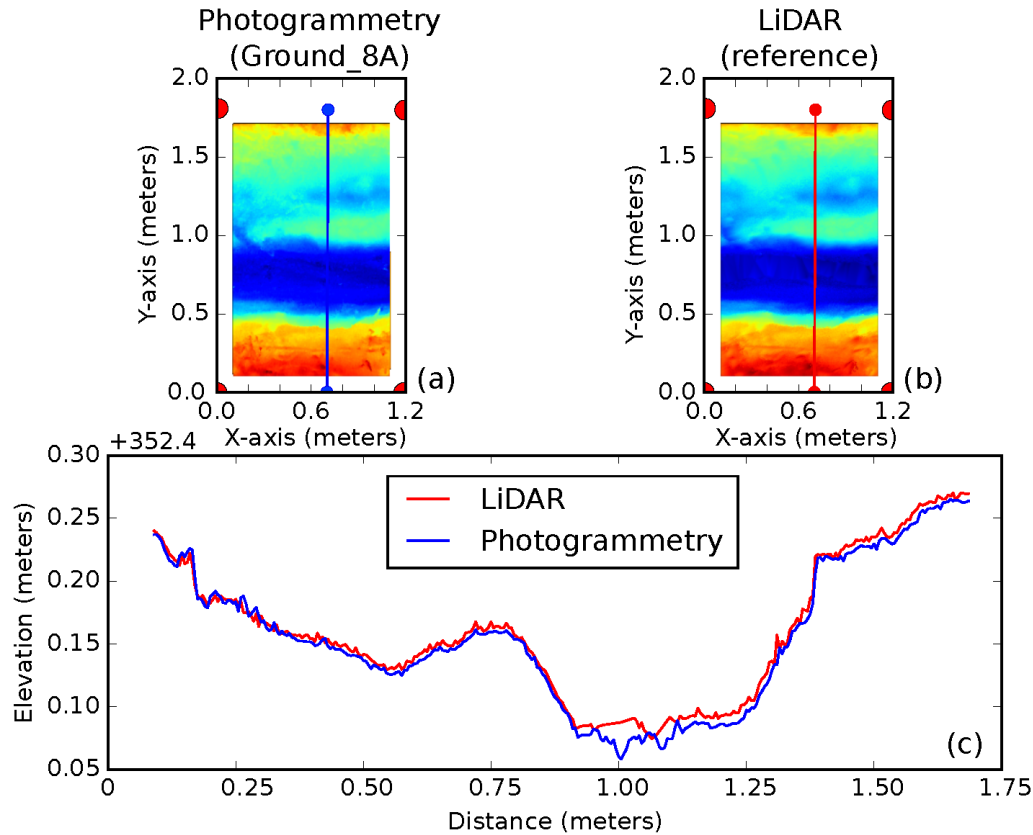


Figure 11: Illustration of three-dimensional point cloud interpolation into raster grids for volume and cross-section analysis of gully monitoring and geomorphologic quantification. Direct comparison of Ground_8A photogrammetry (a) and LiDAR (b) raster grid data with a highlight of one specific cross section (c). The cross section can be realized anywhere within the scene.

Figure 11: very difficult to understand and quite difficult to get conclusions from it. More than Fixed 122 is not working well for this Cross-section.

In the revision, this figure was moved to Figure 12. We regret the difficulty in understanding and have attempted to enrich the discussion to alleviate the confusion. First, we present these data to show that some of the platforms performed much better than others. And, we believe this point is obvious. Second, we agree with the reviewer that more than the Fixed_122 did not work well; however, we must determine the data usage before we consider whether the data is “good” or “bad”. For instance, the Ground_4A data appears to have roughness elements in each of the cross-sections that place the data in the “bad” category for process investigation, while a fair amount of the metrics rank this dataset as being very close to the LiDAR. Overall, it ranks 8th. And, the Fixed_61 seems to be the other “bad” dataset; although the field scale survey and supplementary cross-section data may be appropriate for lumped model assessment (e.g. RUSLE2).

For example: (P10L33-P11L5)

“In the gridded elevation evaluations (Min, Max, Mean; Table 5; Figure 12), absolute difference from LiDAR was less than 0.02%, and these differences were only seen in the fixed-wing flights. The variance (i.e. roughness), however, does show that absolute differences from LiDAR were 131% (Fixed_122), 23% (Fixed_61), and 9% (Ground_4A). Comparing elevation information (Table 7; Figure 12) between photogrammetric cross-sections and LiDAR cross-sections through linear regression, indicates a coefficient of determination larger than 0.98 for all datasets, excluding the two fixed-wing flights. The standard error of this regression was less than 10 mm for Quad_20, Quad_35, Ground_2B, Ground_4B, Ground_4C, Ground_6A, and Ground_8A. Following that, Ground_2A and Ground_4A had a standard error of approximately 17 mm and the two fixed wings had a standard error of 25 mm. The average area percent difference for all cross-sections were within 1.5%, while the two fixed wings had 3% (Fixed_61) and 8% (Fixed_122). It is important to mention that the range of area percent difference is within $\pm 2\%$,

while the fixed-wing systems had up to 15% percent difference. The error is huge for instance if this dataset was intended to be used for the purpose of development/calibration/validation of a soil erosion model.”

Quantifying uncertainty of high-resolution remotely sensed topographic surveys for ephemeral gully channel monitoring

Robert R. Wells¹, Henrique G. Momm², and Carlos Castillo³

¹National Sedimentation Laboratory, Agricultural Research Service, United States Department of Agriculture, Oxford, Mississippi, 38655, U.S.A.

²Department of Geosciences, Middle Tennessee State University, Murfreesboro, Tennessee, 37132, U.S.A.

³Department of Rural Engineering, University of Córdoba, Córdoba, Spain.

Correspondence to: Henrique Momm (henrique.momm@mtsu.edu)

Abstract. Spatio-temporal measurements of landform evolution provide the basis for process-based theory formulation and validation. Overtime, field measurement of landforms has increased significantly worldwide, driven primarily by the availability of new surveying technologies. However, there is not a standardized and/or coordinated effort within the scientific community to collect morphological data in a dependable and reproducible manner, specifically when performing long-term small-scale process investigation studies. Measurements of the same site using identical methods and equipment, but performed at different time periods can lead to incorrect estimates of landform change as a result of three-dimensional registration errors. This work evaluated measurements of an ephemeral gully channel located in agricultural land using multiple independent survey techniques for locational accuracy and their applicability to generate information for model development/validation. Terrestrial ~~photogrammetry~~ and un-manned aerial vehicle-based ~~photogrammetry~~ platforms were compared to terrestrial LiDAR, defined herein as the reference dataset. Given the small-scale of the landform measured, alignment and ensemble equivalence between data sources were addressed sine qua non through post-processing. Utilization of ground control points were prerequisite to three-dimensional registration between datasets and improved confidence in the morphology information generated. Not one of the methods was without limitation; however, careful attention to project pre-planning and data nature will ultimately guide temporal efficacy and practicality of management decisions.

Keywords: close-range photogrammetry, un-manned aerial vehicles, ephemeral gully, soil erosion, remote sensing.

1 Introduction

Spatio-temporal measurements of landform evolution provide the basis for process-based theory formulation and validation. Field measurement of landforms has increased significantly worldwide, driven by the availability of new surveying technologies. Recent improvements ~~include, but are not limited to: aerial and terrestrial to-existing systems, such as mobile light~~ Light detection-Detection and ranging-Ranging (LiDAR) systems (Kukko et al., 2012; Vinci et al., 2015; Eitel et al., 2016; Hawdon et al., 2016), integrated Un-manned Aerial Vehicles (UAV) (Bachrach et al., 2012; Bry et al., 2015; Honkavaara et al., 2016), Real Time Kinematics (RTK) (Rietdorf et al., 2006) ~~and, terrestrial~~ photogrammetry techniques (James and Robson, 2014; Gómez-Gutiérrez et al., 2014; Di Stefano et al., 2016; Marzolf, 2016), and low-cost and/or freeware structure from motion (SfM) ~~and MultiView-Stereo (MVS) photogrammetric software~~ (Castillo et al., 2012; Castillo et al., 2015; Smith and Vericat, 2015; Castillo et al., 2016; Piermattei et al., 2016). However, ~~the buyer must beware that these systems can be prone to misinterpretation (Wheaton et al., 2010) and, even the “high-resolution” equipment can provide misleading information (e.g. Vinci et al., 2015; Figure 13b).~~ Research efforts should focus on a standardized and/or coordinated effort within the scientific community to collect morphological data in a dependable and reproducible manner, specifically when performing long-term

~~process investigation studies (Castillo et al., 2016), there is not a standardized and/or coordinated effort within the scientific community to collect morphological data in a dependable and reproducible manner, specifically when performing long-term process investigation studies.~~

Ephemeral gullies are often defined as small channels, on the order of a few centimeters in depth, predominantly in agricultural fields (SSSAJ, 2008). The emergence, evolution and persistence of these concentrated flow path erosion features are controlled by the combined effects of flow, slope, soil properties, topography and vegetation characteristics (Zevenbergen, 1989; Castillo et al., 2016). The term ephemeral refers to the fact that agricultural producers often erase these channels during regular farming operations (Foster, 2005) and/or flow within these channels is cyclical. The combination of a highly dynamic lifespan with the relatively small-scale channel features require high accuracy measurements with high temporal and spatial resolution.

Many studies have been conducted to assess topographic accuracy of ephemeral/classical gully morphological measurements using a wide range of systems (~~i.e.e.g. Casali, et al., 2006; Gómez-Gutiérrez et al., 2014; Di Stefano et al., 2016; Casali, et al., 2004~~). Among them, LiDAR data have been used as the reference for the evaluation of secondary remote sensing systems and physical contact systems. Traditional airborne LiDAR studies have primarily focused on quantifying locational error from datasets generated by air-borne systems, where locational variations are the result of coalesced errors generated by inaccuracies of Global Positional Systems (GPS), aircraft Inertial Measurement Unit (IMU) and overall timing of the system (Hodgson and Bresnahan, 2004) ~~LiDAR studies primarily focused on quantifying locational error from datasets generated by air-borne systems, where locational variations are the result of coalesced errors generated by inaccuracies of Global Positional Systems (GPS), aircraft Inertial Measurement Unit (IMU) and overall timing of the system (Hodgson and Bresnahan, 2004).~~ LiDAR positional errors can also be the result of interaction between the laser pulse and features with sharp relief change or occlusions that result in multiple returns from one laser pulse (Milenković et al., 2015). Evaluations of the accuracy of topographic information using airborne LiDAR are often compared with discrete sample locations and/or man-made targets with known coordinates (Hodgson and Bresnahan, 2004; Csany et al, 2005). Despite the large number of studies and methods developed to quantify positional errors in traditional airborne LiDAR surveys, this type of survey does not offer the temporal and spatial resolution necessary for quantitative monitoring of small-scale geomorphological characteristics (i.e. ephemeral gullies) necessary for process description; although, recent developments in UAV LiDAR systems provide 10mm survey-grade accuracy, one million measurements per second, and 360° Field of View (FoV), all in <1.6 kg payloads. These UAV LiDAR systems can range from \$100k to \$400k (US dollar), dependent upon level of accuracy and data collection rate (see <http://www.rieglusa.com> as an example).

At a finer scale, investigation of ground-based/terrestrial LiDAR has demonstrated a high locational accuracy (~2mm) and noted the importance of appropriate spatial sampling density for ephemeral and classical gully investigation (Momm et al., 2013a). Topographic representation of gully channels requires datasets with a specific minimum sampling density, which is dependent on site-specific topographic characteristics (Castillo et al., 2012; Momm et al., 2013a). Overlapping the same area by multiple scans increases the overall sampling density and assists in occlusion and shadow avoidance, while normalizing spatial resolution to overcome this limitation.

Studies involving various surveying techniques of concentrated flow paths revealed a wide range of quality, accuracy, cost, and field campaign effort (Momm et al., 2011, 2013b; Castillo et al., 2012; Wells et al., 2016). Among the surveying techniques considered, photogrammetry has been shown to provide simple but robust measurement of small-scale changes in geomorphologic characteristics within agricultural fields (Castillo et al., 2012; Gesch et al., 2015; Wells et al., 2016). Further, a wide variety of platforms and techniques have been used to capture images, including kites (Marzolf, et al., 2003), backpacks (Wells et al., 2016) and UAVs (Ries and Marzolf, 2003; Bachrach et al., 2012; James and Robson, 2014; Bachrach et al., 2012;

Cook, 2017). Erosion monitoring programs based on photogrammetry have several advantages when compared to other surveying techniques. Photogrammetric field surveys do not interfere with farming operations, as it is non-obstructive; field campaigns are extremely efficient; and often they do not require specialized technical skillsets to implement (James and Robson, 2012). However, photogrammetric results can vary as a function of controlling parameters used during data collection and processing (Eltner et al., 2016).

A particular point of interest is the general query posed by Wheaton et al. (2010) concerning real geomorphic change. With these evolving technologies, our ability to collect topographic information is seemingly limitless. At what point can we agree that the results describe “real” change over noise? The alignment of temporal-topographic elements is the most critical step when planning small-scale erosion studies (Smith and Vericat, 2015). Reliance on control points is the foundation of classical surveying. All surveys must close with a shot back to the initial occupation point. This too is the initiation of error propagation. A multitude of solutions exist for each set of photos and/or LiDAR points; however, the unique solution is bounded by the spatial and vertical positioning of the control points (Micheletti et al., 2015). Provided that alignment can be controlled, the next operation typically involves a culling process of some sort as the data shift into organized units.

The conversion of irregularly sampled point clouds into regular grids, referred to as Digital Elevation Models (DEMs), is extremely common as most flow routing algorithms and Geographic Information Systems (GIS)-based soil erosion modeling technology are designed to work using these digital representations. As a result, a large number of studies have been conducted to evaluate DEM representation as affected by sampling intervals and interpolation algorithms (Aguilar et al., 2005; Ziadat, 2007; Bater and Coops, 2009; James and Robson, 2012; 2014James and Robson, 2012; James and Robson, 2014), and by DEM spatial resolution (Zhang and Montgomery, 1994; Kienzie, 2004; Momm et al., 2013a).

The majority of previous studies have focused on accuracy evaluation of a specific photogrammetric survey method at a single time period. Varying sensors, platforms, and processing methods can yield different results (variations in sampling densities, gaps, and noise). Furthermore, measurements of the same site using identical methods and equipment, but performed at different time periods can also lead to three-dimensional registration errors. Therefore, the scope of this work was to evaluate multiple survey techniques and provide a framework for temporal studies of ephemeral gully channelsfor measuring ephemeral gully channels. Three surveying platforms, with varying parameters. Three surveying methods with varying parameters were conducted independently and evaluated for locational accuracy and their applicability in generating information for model development/validation. The objectives of this study are twofold: to quantify the overall accuracy of the different survey methods with varying configurations and to develop practical guidelines for the design and implementation of future ephemeral gully monitoring studies.

2 Methods

2.1 Study Site

The study site was located in the northwest corner of Webster County, Iowa, U.S.A. (Figure Figure-1). Farming is the dominant enterprise in Webster County. The crop rotation was a corn-soybean rotation. Total annual precipitation is about 873 mm, of which, 70 percent usually falls between April and September. The Area Of Interest area-of-interest (AOI) within the field survey was a small reach (1.9 m x 1.3 m; 2.47 m²m2) of a 150 m long ephemeral gully, oriented south to northwest, eroding Clarion loam (fine-loamy, mixed, superactive, mesic Typic Hapludolls) at the upper (south) extent, Terril loam (fine-loamy, mixed, superactive, mesic Cumulic Hapludolls) on the intermediate slopes, and Webster clay loam (fine-loamy, mixed, superactive,

Formatted: Space Before: 24 pt, After: 12 pt

Formatted: Space Before: 12 pt

Formatted: Font: 10 pt

mesic Typic Endoquolls) within the lower relief section of the field (Figure 2). Within the AOI, the soil was Clarion loam (Figure 2B).

2.2 Field Survey

Field surveys were conducted using three independent modes: ground-based/terrestrial LiDAR, ground-based/terrestrial photogrammetry, and airborne photogrammetry. The surveys yielded twelve datasets (Table 1; dashed lines represent delineation between survey modes). The terrestrial LiDAR was considered the reference dataset, due to perceived superior accuracy. All surveys were run independently of each other and completed on the same day. Each dataset was represented using the NAD83 UTM15N coordinate system.

In this study, the terrestrial LiDAR point cloud was generated using TopCon ScanMaster software (<https://www.topconpositioning.com/software/mass-data-collection/scanmaster>), all ground-based/terrestrial photogrammetric point clouds were generated using PhotoModeler Scanner software (www.photomodeler.com/products/scanner/default.html) and all airborne photogrammetric point clouds were generated using Pix4Dmapper Pro software (<https://pix4d.com/pix4dmapper-pro/>). It is acknowledged that the selection of input parameters influences the sampling intensity and local elevation variance; however, the quantification of the influence of input parameters on the output is beyond the scope of this study. Here, similar survey methods used the same input parameters to generate point clouds.

2.2.1 differential GPS of Ground Control Points

Site preparation began by locating a state monument point (Figure 2A) and laying out 406 x 406 mm quad-triangle, white-on-black sheet GCPs, considering the long and short axes of the field as well as the high and low elevations within the field boundary, herein considered to be the field GCPs (10 total). One additional set of GCPs with rad coded targets was arranged along the gully channel (four pins at the location; Wells et al., 2016), herein considered to be the channel GCPs (4 total). All GCPs were surveyed using TopCon GR-3 dGPS survey equipment (TopCon Corporation, Tokyo, Japan; 10 mm horizontal and 15 mm vertical kinematic accuracy) to obtain relative position in reference to the state monument point. A static occupation (6 hrs; 3 mm horizontal and 5 mm vertical accuracy) was initiated with the base station, then all GCPs (field, channel and state monument) were surveyed with the rover (20 sec collection interval). All survey data was corrected using an OPUS (National Geodetic Survey) solution of the base station location, processed with reference to the state monument point. Both (field and channel) GCP positions were used to adjust point clouds from the LiDAR and photogrammetric surveys of the site.

2.2.2 Terrestrial LiDAR Survey

The terrestrial LiDAR survey was conducted using a TopCon GLS 1500 (TopCon Corporation, Tokyo, Japan). The system operates in similar fashion to standard total stations. For each laser pulse, the system records X, Y and Z coordinate values with respect to the position of the scanner sensor (local coordinate system), the intensity of the returned signal (reflectance) and spectral information from an integrated digital camera within the instrument. Local coordinates are transformed into global coordinates during post-processing by entering the external geometry coordinates (i.e. absolute position determined from Post-Processed Kinematic survey) of GCPs. The AOI (demarcated by channel GCPs; 2.47 m²; Figure 2B) within the field boundaries, covering the gully channel, was surveyed with one scan resulting in a total of 5,613,334 scan points.

Given the level of user control of input parameters and the high locational accuracy of terrestrial LiDAR systems, this survey method was selected as the reference to which all other survey methods were compared. However, it is important to acknowledge that this survey method does have limitations.

Formatted: Space Before: 12 pt

Formatted: Space Before: 12 pt

Formatted: Space Before: 12 pt

In surveys with high sampling intensity, it is common for the same location on the ground to be hit by multiple laser pulses. This yields datasets with high sampling intensity but with a range of elevation values for the same location (i.e. fluff) given the vertical accuracy of the system. In this study, this locational variability is estimated to be approximately $\pm 2\text{ mm}$. The sensor operates in the near-infrared portion of the electromagnetic spectrum ($1,535\text{ nm}$) and in this spectral range; electromagnetic energy is absorbed by water (Aronof, 2005). In locations with water features, the sensor emits laser pulses but no laser pulse is reflected back to the sensor, preventing the range calculation for that particular pulse. During data collection for this survey, a shallow film of water was present in the gully channel (Figure 3A) and, as result, no points were recorded in the water-covered region (Figure 3B) (e.g. Gómez-Gutiérrez et al., 2014). Sampling gaps in LiDAR surveys can also be attributed to vertical features that limit the sensor line-of-site, referred to as shadowing (Figure 3C). The basic principle of LiDAR technology is to measure the time needed for an individual laser pulse to travel from the transmitter to the target and back to the receiver allowing the range distance to be calculated (Wehr and Lohr, 1999). However, in certain situations, as the scanner moves along the scan arc, the laser footprint hits an area just past the edge of a surface where the next return appears to be from a distance greater than expected (i.e. occlusion). In this case, the gap is linearly filled by equally spaced points (Figure 3C highlight). A shadow of the obstruction appears in the dataset. These artificial points may be filtered by intensity and multiple scan positions may be used to discriminate the features. Here, the AOI was slightly decreased in areal size to omit GCP occlusions from the dataset.

2.2.3 Ground-based Terrestrial Photogrammetric Survey

Ground-based Terrestrial photogrammetry was conducted using a Nikon D7000 16.2 MP camera (Nikon Inc., Melville, NY) with calibrated 20 mm lens (Gesch et al., 2015; Wells et al., 2016). The camera was mounted to a backpack frame connected to an iPad mini (Apple, Cupertino, CA) through a WiFi CamRanger hub (Camranger LLC, <http://www.camranger.com>) (Wells et al., 2016). Multiple images were collected around the channel GCPs, including views from each corner and all sides. Still images captured by the camera were transformed to point clouds using PhotoModeler Scanner photogrammetric software. Initial data processing included: aerial triangulation and bundle adjustment, camera position and exterior orientation. Following initial processing, channel GCP positions (i.e. global external geometry) were included to optimize point cloud accuracy.

2.2.4 UAV-based Photogrammetric Survey

Two UAV platforms were used to collect airborne photography (<https://www.sensefly.com/home.html>): fixed-wing (eBee) and quadrotor (albris). The fixed-wing platform had a 12 MP nadir camera (i.e. belly mount; Canon S110 RGB) and was deployed (eMotion2 v2.4.10) to capture the entire field boundary (Figure 2A) by throwing the craft in the air, then the craft flies, captures images and lands itself. Deployment software parameters were: Altitude (117 m , 58 m); Resolution (41 mm , 20 mm); Latitude Overlap (80% , 50%), Longitude Overlap (80% , 50%), Image Collection (356, 569), and Image Format (CR2(RAW)) for the two respective flights. The quadrotor platform had a 38 MP camera mounted within an 180° vertical range head and was deployed (eMotionX v1.3.0) to capture both, the extent of the gully within the field and specific points of interest (i.e. AOI; Gesch et al. 2015; Wells et al. 2016). The quadrotor was deployed through mission planning software. The craft takes off, flies and captures images, then lands itself. Deployment software parameters were: Altitude (35 m , 20 m); Resolution (7 mm , 5 mm), Latitude Overlap (75% , 75%), Longitude Overlap (80% , 80%), Image Collection (96, 146), and Image Format (dng(RAW)) for the two respective flights. During the flights, winds from the southeast ranged from 7 to 10 m/s and skies were clear.

Formatted: Font: 10 pt

Formatted: Font: 10 pt

Formatted: Space Before: 12 pt

Formatted: Space Before: 12 pt

Formatted: Font: (Default) Times New Roman, 10 pt

Formatted: Normal, No bullets or numbering

Formatted: Default Paragraph Font, Font: (Default) +Body (Cambria), 12 pt

Still images captured by the UAVs were transformed to point clouds using Pix4DMapper Pro photogrammetric software. Initial data processing included: camera calibration, aerial triangulation and bundle adjustment, camera position and exterior orientation. Following initial processing, field GCP positions (i.e. global external geometry) were included to optimize point cloud accuracy.

Formatted: Font: (Default) Times New Roman, 10 pt

Both, fixed-wing and quadrotor, UAV systems were deployed with a fixed path and common photograph overlap percentage. All missions/deployments were preplanned using flight planning and control software provided by the manufacturer. A mission block and specific area or point of interest were selected, including preferred ground resolution, camera head angle (quadrotor only) and flight altitude, then flight lines for aerial coverage, circular paths with horizontal plane around objects of interest (quadrotor only), image capture points and waypoints were generated prior to deployment. Key flight parameters were displayed in real-time, along with battery level and image acquisition progress, while the autopilot continuously analyzed onboard control data to optimize the flight. Still images captured by the UAVs were transformed to point clouds using Pix4DMapper Pro photogrammetric software. Initial data processing included: camera calibration, aerial triangulation and bundle adjustment, camera position and exterior orientation. Following initial processing, field GCP positions were included to optimize point cloud accuracy.

Formatted: Normal, Left, No bullets or numbering

Both, fixed-wing and quadrotor, UAV systems were deployed with a fixed path and common photograph overlap percentage. All missions/deployments were preplanned using flight planning and control software provided by the manufacturer. A mission block and specific area or point of interest were selected, including preferred ground resolution, camera head angle (quadrotor only) and flight altitude, then flight lines for aerial coverage, circular paths with horizontal plane around objects of interest (quadrotor only), image capture points and waypoints were generated prior to deployment. Key flight parameters were displayed in real time, along with battery level and image acquisition progress, while the autopilot continuously analyzed onboard control data to optimize the flight.

3.1.1.1 Fixed-wing UAV

The fixed-wing platform had an 18.2 MP nadir camera (i.e. belly mount) and was deployed to capture the entire field boundary (Figure 2) by throwing the craft in the air, then the craft flies, captures images and lands itself. Two altitudes were flown: 122 m and 61 m.

3.1.1.2 Quadrotor UAV

The quadrotor platform had a 38 MP camera mounted within an 180° vertical range head and was deployed to capture both, the extent of the gully within the field and specific points of interest (i.e. gully cross sections; Gesch et al. 2015; Wells et al. 2016). The quadrotor was deployed through mission planning software. The craft takes off, flies and captures images, then lands itself. Two altitudes were flown: 35 m and 20 m.

3.2.3 Dataset Alignment

To ensure the highest three-dimensional alignment among all point clouds and consistent spatial coverage by all methods, a three-step preprocessing approach was developed. First, the set of four channel GCPs (white square targets in Figure 2B) were used to generate a rectangular polygon to subset the point clouds in all surveys, assuring that all surveys cover exactly the same ground position. Second, a smaller polygon subset was performed by generating a polygon with a 5 cm reduction on all

Formatted: Space Before: 12 pt

Formatted: Font: 10 pt

sides. This was performed to exclude areas close to the channel GCPs and assure the elimination of shadowing and occlusion created by the slightly elevated channel GCPs. Third, the sampling void within the LiDAR dataset, created from the presence of a thin film of water within the channel (Figure Figure-3A), was manually digitized into another polygon and used to remove points from all photogrammetric-generated datasets to assure uniformity between all datasets. Essentially, instead of using interpolated data within this void in the reference dataset, we simply placed a void in all datasets; therefore, we do not introduce bias into the calculations with regard to the water film void in the LiDAR data (e.g. Gómez-Gutiérrez et al., 2014). Subsequently, since each surveying method was performed using the same set of field and channel GCPs, manual inspection of measured points located coincident with channel GCPs (white square targets in Figure Figure-2B) were used to generate planes (10), yielding ten planes, one for each dataset with the exception of the Fixed_61m and Fixed_122m datasets, in which no points were located on top of the channel GCPs. The four GPS surveyed coordinates of the center location of the channel GCPs were used to fit a reference plane to be matched by all surveys (black squares in Figure Figure-4). Three-dimensional locational differences between the reference plane generated using the GPS survey (black squares in Figure Figure-4) and the planes of each surveyed dataset (LiDAR and photogrammetry) were calculated using the Iterative Closest Point (ICP) algorithm (Besl and Mckey, 1994; James and Robson, 2012; Micheletti et al., 2015) implemented in MATLAB (MathWorks Inc., Natick, Massachusetts) and, since no scale issues were observed, no scaling factor was implemented in the ICP. The ICP algorithm minimizes the locational differences between two sets of three-dimensional point clouds and outputs a 3x3 rotation angle matrix, R , and a 1x3 translation vector, T (Eq. 1). These matrices were used to three-dimensionally transform, through rotation and translation, the measured point clouds to best match the reference plane.

$$\begin{bmatrix} X \\ Y \\ Z \end{bmatrix}_{ref} = T + R_{\omega\phi\kappa} * \begin{bmatrix} X \\ Y \\ Z \end{bmatrix}_{meas} \quad (1)$$

3.3.2.4 Error Metrics

One of the problems in looking at the data in the original point cloud format was the large difference between the total number of points within datasets (i.e. hundreds to millions), which tends to bias the results; therefore, in the sections that follow, the investigation of point cloud data is complimented by an analysis of gridded data. In the point cloud analysis, each point within the photogrammetry surveys was compared to that within the LiDAR survey. The analysis is carried out in two ways: point normal to the plane (each photogrammetry point was projected normal to a fitted plane of LiDAR points at the nearby position) and spot elevation to Triangular Irregular Network (TIN) (each photogrammetry point was projected up or down to intersect the TIN surface of the LiDAR points). In the gridded data analysis, volume difference and cross-section assessment are performed. Furthermore, this type of data structure (i.e. raster grid) is a common format used to estimate soil loss volumes and generate cross-sections for modeling exercises (Dabney et al., 2014). And, the gridded data introduce a common means of discussing differences between the survey methods. One of the problems in looking at the data in the original point cloud format was the large difference between the total number of points within datasets (hundreds to millions), which tends to bias the results; therefore, the photogrammetry data were gridded to introduce a common means of discussing differences between the survey methods. Furthermore, this type of data structure (i.e. raster grid) is a common format used to estimate soil loss volumes and generate cross-sections for modeling exercises (Dabney et al., 2014). In the point cloud analysis, each point within the photogrammetry surveys was compared to that within the LiDAR survey. The analysis was carried out in two ways: point normal to the plane (each photogrammetry point was projected normal to a fitted plane of LiDAR points at the nearby position) and spot elevation to TIN (each photogrammetry point was projected up or down to intersect a TIN surface of the LiDAR points).

Formatted: Font: 10 pt

Formatted: Font: 10 pt

Formatted: Font: 10 pt

Formatted: Font: 10 pt

Formatted: Space Before: 12 pt

3.3.12.4.1 Sampling Intensity, Local Variance, and Spatial Pattern

Sampling intensity is defined as the number of points per unit of area. Investigation of the sampling intensity spatial variation can reveal over/under sampled locations. Under sampled locations can potentially be sources of positional errors, especially in surfaces with high relief. Sampling intensity was evaluated using the quadrant method (Dodd, 2011), where a virtual regular grid of 1 cm was imposed on each dataset and the number of LiDAR and photogrammetry points falling within each grid was counted and recorded. Similarly, the local elevation variance was evaluated by calculating the elevation range (difference between maximum and minimum) within each grid. The local elevation variance is a function of the terrain characteristics, sampling intensity, survey method, and post-processing parameters.

Two metrics were used to quantify the spatial pattern distribution: distances between events and between events and random points not in the pattern (void space). The G-Function, $G(r)$, defined as the cumulative frequency distribution of nearest-neighbor distances (Lloyd, 2010), provides the conditional probability that the distance between points (event-event) is less than the point distance threshold (r). The empirical distribution is obtained for each distance r by counting the number of points at distances less than or equal to r from each point within the AOI. The theoretical distribution is obtained by assuming a completely random pattern with density (λ ; estimated by the ratio of total number of points, divided by the area of the AOI), modeled as a Poisson process. Empirical values closer to the theoretical values indicate a random distribution, empirical values above the theoretical values indicate clustering, and empirical values below the theoretical values indicate a more regular distribution (Bivand et al., 2008). The F-Function, $F(r)$, defined as the cumulative frequency distribution of the distance to the nearest point in the AOI from random locations not represented within the AOI (Lloyd, 2010), provides the probability of observing at least one point (event) closer than r to an arbitrary point within the AOI ("empty space" or "void" distances). Estimated and theoretical distributions are obtained similar to that of the G-function. The interpretation of graphed observed versus theoretical values indicates a regular pattern when the observed is above the theoretical values and clustering when it is below (Bivand et al., 2008). These point pattern analyses were performed using the Spatstat package in the R software package (Baddeley and Turner, 2005; Bivand et al., 2008).

Furthermore, points with the same X, Y and Z to the fifth decimal place were removed from the LiDAR dataset, indicating collection of redundancy information. Point pattern analysis was performed using the G Function (distribution of nearest neighbor distance differences) and F Function (distribution of nearest neighbor to virtual grid centroid distance differences) to evaluate potential irregularities in sampling, such as over-sampling one area while under-sampling another (Bailey and Gatrell, 1995), and overall spatial distribution of the data sampling (i.e. clustered or disperse).

Similarly, the local elevation variance was evaluated by calculating the elevation range (difference between maximum and minimum) within each grid. The local elevation variance is a function of the terrain characteristics, sampling intensity, survey method, and post-processing parameters.

3.3.22.4.2 Vertical and Horizontal Displacement using Point Tangential Projection to Plane

Vertical and horizontal displacement between the LiDAR and photogrammetry measurements in each dataset were quantified using the normal projection of each photogrammetry point into a plane fitted to the nearest LiDAR points (Figure Figure 5A).

For each photogrammetry point (green circle in Figure Figure 5A), the nearest (within 2.5cm sphere) LiDAR points were selected (black dots in Figure Figure 5A), a plane was fitted to the selected LiDAR point cloud points, the photogrammetry point was normally projected onto the plane, the coordinates of the intersection point (red circle in Figure Figure 5A) recorded and statistics were generated (Table 2). This analysis was performed for all datasets using an in-house developed software package Python script, where

Formatted: Space Before: 12 pt

Formatted: Font: 10 pt

Formatted: Font: 10 pt

Formatted: Font: 10 pt

Formatted: Font: 10 pt

$$\begin{aligned} D_x &= (Z_x^{plane} - Z_x^{photo}) \\ D_y &= (Z_y^{plane} - Z_y^{photo}) \\ D_z &= (Z_z^{plane} - Z_z^{photo}) \end{aligned} \quad (2)$$

3.3.3.2.4.3 Vertical Displacement using Spot Elevation

The three-dimensional point cloud representing the reference dataset (LiDAR) was converted into a ~~Triangular Irregular Network (TIN)~~ (Figure Figure 5B). Each point in the photogrammetry (~~photogrammetry~~) dataset (green circle in Figure Figure 5B) was compared to the LiDAR TIN by fixing the photogrammetry X and Y coordinates while varying the Z-coordinate up or down until the point intersected the TIN (red circle in Figure Figure 5B). The Z-coordinate at intersection was recorded. This analysis was performed using ArcGIS (Esri, 2011).

$$D_z = (Z_z^{TIN} - Z_z^{photo}) \quad (3)$$

The vertical displacement at a location is calculated by subtracting the photogrammetry elevation from the LiDAR elevation of the TIN. Descriptive elevation statistics were generated based on all raster grid cells (~~Table 3~~).

3.3.4.2.4.4 Gridded Surface Assessment

All point clouds were converted into 5x5 mm regular raster grids using linear interpolation. The two upstream channel GCPs served as the base of the rectangular grid; roughness of individual datasets was highly dependent upon sampling intensity. Volume difference calculations were performed between the LiDAR raster grid and the photogrammetry raster grid. Two metrics were calculated, volume difference and absolute volume difference (Eqs. 4 & 5; ~~Table 4~~).

$$V_{diff} = \sum_{i=1}^n [(Z_i^{lidar} - Z_i^{photo}) * cza] \quad (4)$$

$$V_{acc} = \sum_{i=1}^n [|Z_i^{lidar} - Z_i^{photo}| * cza] \quad (5)$$

where Z^{lidar} is the reference elevation, Z^{photo} is photogrammetry elevation, cza is the raster grid cell ~~size~~ area (~~0.000025 m²0.005~~), and n is the total number of raster grid cells.

3.3.5.2.4.5 Gridded Cross-Section Assessment

Gully modeling technologies often use cross-sections as basic modeling units. With the objective to assess the error introduced by each survey to cross-section analysis (~~Figure 10~~), the raster grid surfaces were used to generate ~~eleven-nine (119)~~ cross-sections. ~~For each cross section, various assessments were conducted, including: minimum elevation, maximum elevation, mean elevation, variance, linear modeling (R^2 , p , SEM), and area calculations.~~ Area above the curve was selected as one of the metrics to quantify cross-section accuracy, given as

$$A_c = \sum_{i=1}^n [(353.00 - Z_i) * \Delta_{dist}] \quad (6)$$

where A_c is the area for cross-section c in square meters, Z_i is the elevation at point i in the cross-section, and Δ_{dist} is the distance between points in the cross-section (0.005 m). ~~The An elevation~~ constant (353.00) was used to adjust all cross-section elevations, due to local elevation relation to mean sea level, thereby truncating area values. The deviation of the area estimates from the LiDAR were calculated using:

Formatted: Space Before: 12 pt

Formatted: Font: 10 pt

Formatted: Font: 10 pt

Formatted: Font: 10 pt

Formatted: Space Before: 12 pt

Formatted: Space Before: 12 pt

$$A_{dev} = \left(\frac{A_{obs} - A_{est}}{A_{obs}} \right) * 100 \quad (7)$$

Quantification of cross-section elevation descriptive statistics (Table 5; Figure 11) and fitted linear models between LiDAR and photogrammetry elevations for individual cross sections were also used as comparison metrics (Table 6).

3.4.2.5 Dataset Scoring

Since there is no true standard of judging the performance of the measurements provided herein, a system of scoring was developed to grade the photogrammetry data with regard to the LiDAR data (Table 7). Scores between 1 and 11 were assigned to each evaluation category using both, point cloud and gridded data. For example, the difference in absolute volume was assigned decreasing scores (1→11) for increasing volume difference and, correlation coefficients were assigned decreasing scores (1→11) for decreasing correlation. Simply, if a variable had a positive impact, it received a higher score. Each score is defined in Table

72.

3 Results

4.13.1 Sampling Intensity and Point Pattern Evaluations

The point clouds presented here had a large variability in sampling intensity (from 1 to > 250 points per cm^2 ; Figure 6). The difference in point sampling influences micro-topography and apparent roughness, and may lead to bias in volume estimation. If the surface is rough, the effect will be greater (Figure 44). Point counts are very low for the fixed-wing flights in comparison to the other methods and the sparse point count leads to interpolation (filling) during raster gridding (Figure 6), while elevation range is very similar for all methods with the exception of the fixed-wing datasets (Figure 7). Point pattern analysis was examined using the G- and F-functions (Figure 8). Each tests through an assumption of completely spatially random (homogeneous Poisson process), although interpretations for clustering and regularity are in opposition for each test (i.e. regular point spacing outcome for the G-function is below gray confidence bounds and for the F-function it is above). At first, the confidence bounds (gray envelope bounding the theoretical values (red dash line)) show that the Fixed_122 has a sparse point count. Looking at the G-function results, the data are clustered at distances of 0.02 m (Fixed_122), 0.002 m (Quad_20) and 0.001 m (Grd_8A), then regularly distributed. This indicates that small distances occur less often than expected under the assumption of spatial randomness. The F-function results say that the data are randomly distributed to 0.06 m (Fixed_122) and 0.025 m (Quad_20), and clustered for Grd_8A (i.e. on short distances, fewer points are encountered than for a random pattern); although, the scale of r should be acknowledged ($< 3 mm$). All twelve datasets yielded observed G-function values below the theoretical values, indicating a regular sampling pattern. The terrestrial photogrammetric surveys did show slight clustering at small distances ($< 3 mm$). Therefore, based on these metrics, a regular sampling pattern was observed, indicating that all locations within the study area were sampled with a similar sampling pattern (no areas where over sampled nor under-sampled) for all twelve datasets in this study. In Figure 6, point counts are very low for the fixed-wing flights in comparison to the other methods and the sparse point count leads to interpolation (filling) during raster gridding. Variance shows roughness is similar for most of the surveys, with the exception of Fixed_122 where the variance is extremely low (0.0005; Table 5). This result merely points out that the Fixed_122 is extremely smooth in comparison to the other surveys, due to the low sampling density (Figure 8) and enhanced interpolation between points for the high spatial resolution raster grid (0.005m cell size).

Formatted: Space Before: 12 pt

Formatted: Space Before: 24 pt, After: 12 pt

Formatted: Space Before: 12 pt

4.23.2 Vertical and Horizontal Displacement Evaluations

Graphical representation of both spot elevation to TIN and normal to fitted plane for the fixed-wing flight at 122 m altitude (Fixed_122 (Figure 69)), and the four photo-pair (Ground_8A (Figure 710)) are provided for comparative purposes. In the Fixed_122 spot and normal analysis (Figure 9), the range was larger for the spot (± 0.06 m) than normal (± 0.02 m) and residuals suggest a non-linear response, potentially attributed to over-smoothing of the surface and lack of pre-processing (slope of blue line). Residuals for the Ground_8A (Figure 10) have a constant variance and do not show either X- or Y-axis bias. Clearly, outliers can be identified (Figure 10; ~ 0.01 m) and it seems as though the spot analysis provides a larger variance (i.e. amplified residual signature) than the normal analysis, which may be attributed to the 2.5 cm sphere used to define the plane in the normal analysis (i.e. smoothing).

Very similar results were obtained with these two methods. All datasets had negligible mean displacement in the X and Y-directions (Table 2). The standard error of Z in the normal to plane analysis (Table 23) ranged from 0.3 mm (Ground_8A, Ground_6A, Ground_4B, Ground_4C, Ground_2B) to 2.9 mm (Fixed_122). The mean displacement for the normal to plane analysis in the Z-direction (Table 2) ranged from 0.2 mm (Quad_35) to 7.4 mm (Fixed_61). For the vertical spot to TIN analysis (Table 34), standard error ranged from 0.4 mm (Ground_8A, Ground_6A, Ground_4B, Ground_2B) to 2.1 mm (Fixed_122), and mean displacement ranged from 4.5 mm (Ground_8A) to 35 mm (Fixed_122). Here, with the spot to TIN analysis, also note that the LiDAR point cloud was evaluated resulting in a standard error of 0.3 mm and a mean displacement of 0.1 mm; both results are similar to Ground_6A and Ground_8A for standard error and Quad_35 and Ground_4A for mean displacement. The mean elevation difference between photogrammetry and LiDAR was approximately 5.3 mm, between the quadrotor and LiDAR was 3 mm and between the fixed-wing and LiDAR was 25 mm, with the exceptions of the fixed-wing surveys (10 and 35 mm). Perhaps the ten-fold increase derived from the fixed-wing flights was simply because they were not pre-processed (affine transformation was not applied); however, this result does show the importance of common reference points between surveys. Perhaps this was simply because they were not pre-processed (affine transformation was not applied); however, this result does show the importance of common reference points between surveys.

Most of what is reported here is due to point cloud alignment during the preprocessing step discussed earlier (i.e. GCP alignment for each, except fixed-wing flights). The mean elevation difference was approximately 5 mm for all datasets (Tables 2-3 and 34). Positive values indicate that the LiDAR data was, on average, higher than the photogrammetry data and negative values indicate that the LiDAR data was, on average, lower than the photogrammetry data. Similarly, when contrasting the photogrammetry elevation with the elevation of the normal point through linear regression (Table 23), the slope of the fitted line is very close to unity for all methods except Fixed_122, indicating spatially variable discrepancies (higher elevation differences at one region than the rest of the study site).

4.33.3 Gridded Surface Evaluations

The conversion of point clouds with irregularly spaced points, and spatially varying sampling intensity point clouds, into regular raster grids affected each dataset differently (Figure 11). For example, the LiDAR dataset contained a high sampling intensity (> 100 points per ~~cm²~~ ~~cm²~~) with relatively large elevation variability of the points within a raster grid cell. Therefore, the interpolation procedure generated a significantly smoothed surface (e.g. Eitel et al., 2011). Conversely, the fixed-wing surveys had a low sampling intensity and the interpolation procedure linearly filled the gaps, potentially generating a significantly smoothed ~~a~~ surface that differs from the "natural" surface. Variance shows roughness is similar for most of the surveys, with the exception of Fixed_122 where the variance is extremely low (0.0005; Table 5). This result merely points out that the Fixed_122

Formatted: Space Before: 12 pt

Formatted: Space Before: 12 pt

is extremely smooth in comparison to the other surveys, due to the low sampling density (Figure 6) and enhanced interpolation between points for the high spatial resolution raster grid (0.005 m cell size).

from natural-looking surfaces.

One of the most important measurements for gully monitoring is the volume difference between surfaces (Table 46). Given the small scale of this type of erosional feature (on the order of few cm), it is vital to have a good understanding of the expected error for each method. Among similar collection methods (ground-photogrammetry), the absolute volume difference (Table 46) ranged from 0 to 52%, in comparison to Ground_8A; although these differences were extremely small in reality (i.e. range of 0.0062 to 0.0105 m³m³). Performance ranking, in terms of absolute volume difference, was Quad_35, Ground_8A, Ground_4A, Ground_6A, Quad_20, Ground_4C, Ground_4B, Ground_2B, Ground_2A, Fixed_61 and Fixed_122 (10 to 165164% absolute volume difference for Ground_8A and Fixed_122, respectively, in comparison to Quad_35; Table 46).

Variance in elevation difference between the LiDAR and photogrammetry data were all quite similar (Table 5), with the exception of the fixed-winged flights (effect of interpolation). In terms of the elevation range of the data (Table 5), the terrestrial photogrammetry and quadrotor flights were within 1.15% of the LiDAR range and appeared to be very similar (Figure 6), with the exceptions of Ground_2A (too rough; 8.2 % roughness increase) and Fixed_122 (too smooth; 84% roughness decrease). Variance values in elevation difference between the LiDAR and photogrammetry data were all quite similar (Table 5), with the exception of the fixed-winged flights (effect of interpolation). In terms of the elevation range of the data, most were smaller than 2.5 cm per cm² and appeared to be very similar (Figure 7), with the exceptions of Ground_2A (too smooth) and LiDAR (too rough).

4.4.3.4 Gridded Cross-section Evaluations

In the gridded elevation evaluations (Min, Max, Mean; Table 5; Figure 12), absolute difference from LiDAR was less than 0.02%, and these differences were only seen in the fixed-wing flights. The variance (i.e. roughness), however, does show that absolute differences from LiDAR were 131% (Fixed_122), 23% (Fixed_61), and 9% (Ground_4A). Comparing elevation information (Table 7; Figure 12) between photogrammetric cross-sections and LiDAR cross-sections through linear regression, indicates a coefficient of determination larger than 0.98 for all datasets, excluding the two fixed-wing flights. The standard error of this regression was less than 10 mm for Quad_20, Quad_35, Ground_2B, Ground_4B, Ground_4C, Ground_6A, and Ground_8A. Following that, Ground_2A and Ground_4A had a standard error of approximately 17 mm and the two fixed wings had a standard error of 25 mm. The average area percent difference for all cross-sections were within 1.5%, while the two fixed wings had 3% (Fixed_61) and 8% (Fixed_122). It is important to mention that the range of area percent difference is within $\pm 2\%$, while the fixed-wing systems had up to 15% percent difference. The error is huge for instance if this dataset was intended to be used for the purpose of development/calibration/validation of a soil erosion model. Comparing elevation information (Tables 5 and 6) between photogrammetric cross-sections and LiDAR cross-sections through linear regression, indicates a coefficient of determination larger than 0.95 for all datasets, except the two fixed-wing systems. The standard error of this regression was less than 10 mm for Quad_20, Quad_35, Ground_2B, Ground_4B, Ground_4C, Ground_6A, and Ground_8A. Following that, Ground_2A and Ground_4A had a standard error of approximately 20 mm and the two fixed wings of 25 mm. The average wet area percent difference for all cross-sections were within 1.5%, while the two fixed wings had 3 and 7%, for Fixed_61 and Fixed_122, respectively. It is important to mention that the range of wet area percent difference is within $\pm 2\%$, while the fixed-wing systems had up to 15% percent difference. The error is huge for instance if this dataset was intended to be used for the purpose of development/calibration/validation of a soil erosion model.

Formatted: Space Before: 12 pt

4.5.3.5 Dataset Scoring Evaluations

Gridded data performance was led by Ground_8A and Quad_35. Combined category score points ranged from 49 (Ground_8A) to 6 (Fixed_122), ~~ground-terrestrial~~ photogrammetry ranged from 49 to 20, quadrotor ranged from 42 to 35, and the fixed-wing ranged from 9 to 6 (Table 8). For the point cloud analysis, scoring results were, for the most part, very similar. The ~~ground-terrestrial~~ photogrammetry surveys all score very high, with the quadrotor falling in the middle and the fixed-wing at the bottom. Overall, scoring ranged from 140 to 24, with the ~~terrestrial ground~~ photogrammetry leading the group. As the number of photos increased, so too did the sample density; however, the four photo-pair (Ground_8A) was less dense than either the six photo-pair (Ground_6A) or two photo-pair (Ground_4B, Ground_4C), which may be associated with higher accuracy in pixel matching or the addition of inferior image/s to the project. However, it is noteworthy to add that sampling intensity did increase as the UAV altitude decreased, although the Quad_35 did outperform the Quad_20 in a number of categories.

4 Discussion

5.14.1 Methods Comparison

Two photogrammetric software packages (Pix4DMapper Pro and PhotoModeler Scanner) were used to generate solutions for the UAV platform and terrestrial photogrammetry surveys. Pix4DMapper Pro uses a larger number (≥ 3) of overlapping photos, while PhotoModeler Scanner can offer solutions with only two overlapping photos. These software packages differ in the level of user control options for processing and point cloud generation and, point clouds processed by different software packages and/or users could yield very different solutions; although this aspect was not investigated here.

An alarming concern in this analysis was the realization that rotation and translation (Figure 4) was required to ensure that all data was properly aligned. The LiDAR global coordinates were the same as those used for the fixed-wing and quadrotor flights (i.e. field GCPs) and, the channel GCPs were also utilized to optimize the LiDAR point cloud solution. In all ground-photogrammetry point cloud solutions, the same set of global coordinates (channel GCPs) were used. One might expect that the solutions would converge without the need to manipulate the point clouds in post-processing; however, not one of the solutions contained the exact positions of the channel GCPs, including solutions generated using the same platform but with varying processing parameters. For example, three-dimensional registration discrepancies were detected between LiDAR solutions and solutions were LiDAR between solutions from the quadrotor platform at 20 and 35 meters, ~~from~~ the fixed-wing platform at 61 and 122 meters, and ~~from~~ the terrestrial photogrammetry surveys. This realization does offer extreme difficulty in temporal studies of ephemeral erosion processes, no matter the choice of resolution, platform, and/or processing parameters.

Initially, an attempt was made to analyze all datasets in their original form; however, two limitations to the approach were noted: the lack of three-dimensional registration between the datasets skewed efforts to quantify individual point accuracy and, more importantly, reduced confidence in the geomorphology information generated; and the difference in point sampling density, ranging from hundreds (fixed-wing platform) to millions (LiDAR), biased results. Therefore, the discussion presented herein relates to solutions that have been altered from the original solutions produced by the respective software packages. Comparison of measured F and G functions with estimated theoretical spatial distribution under the Complete Spatial Randomness assumption suggested that all datasets did not present any spatial clustering, therefore indicating that the study site was sampled uniformly (regular spatially distributed data throughout the study site) (Figure 8). The main difference between datasets were the scale, in which terrestrial photogrammetry and quadrotor airborne photogrammetry yielded sub-centimeter distances as a result of the large number of samples when compared to the fixed-wing airborne photogrammetry. Results from the point evaluations suggest that the Fixed_122 data is clustered below $r = 20\text{ mm}$; however, the very same point cloud was interpreted to a 5 mm

Formatted: Space Before: 12 pt

Formatted: Space Before: 24 pt,
After: 12 pt

Formatted: Space Before: 12 pt

raster, so part or all of the metrics associated with these flights may be biased. And, two point pattern analysis techniques (F and G functions; see Sec. 4.2.1) were completed to evaluate the spatial distribution of the data sampling (clustered or disperse). Comparison of measured F and G functions with estimated theoretical spatial distribution under the Complete Spatial Randomness assumption suggested that all datasets did not present any spatial clustering, therefore indicating that the study site was sampled uniformly (regularly spatially distributed throughout the study site). These point pattern analyses were performed using the spatstat package in the R software package (Bivand et al., 2008; Baddeley and Turner, 2005). Furthermore, points with the same X, Y and Z to the fifth decimal place were removed from the LiDAR dataset, indicating collection of redundancy information.

The normal projection and vertical spot analysis place the mean elevation for quadrotor flights at 2.9 mm below the LiDAR, for terrestrial photogrammetry at 5.0 mm below the LiDAR and for the fixed-wing flights at 16 mm above the LiDAR. The range of cross-sectional elevation from all terrestrial photogrammetry was within 1% of the LiDAR and, if we drop the rough sample (Ground_2A), the difference falls below 0.2% (e.g. Gómez-Gutiérrez et al., 2014; Di Stefano et al., 2016). All seemingly acceptable for terrain mapping and, perhaps even process development; however, if it is assumed that the bulk density of the soil is 1500 kg/m^3 , then the soil mass difference for the quadrotor flights is 5.6 kg (erosion/elevation depletion mass), for terrestrial photogrammetry is 9.8 kg (erosion/elevation depletion mass), and for the fixed-wing flights is 44.8 kg (deposition/elevation enhancement mass). Furthermore, if the size of the study area (2.47 m^2) is projected onto a 1 ha field, the elevation distortion is anywhere from 23,000 to 181,000 kg of material. Substantial. Another way to visualize this data would be to look at the area calculations, from which there is 1.06% decrease in cross-sectional area (Figure 10) for Ground_8A over that of the LiDAR. One percent is a very low difference and amounts to an impacted area of 0.03 m^2 . Again, when considering the site projected to the 1 ha field, the impacted area is on the order of fifty times the original measurement area (121.5 m^2). These findings are reflective of the decision to keep all collected data and further promote the importance of data uncertainty analysis (Wheaton et al., 2010).

Another interesting finding was the difference between solutions from ground-terrestrial photogrammetry (varying number and/or orientation of photo pairs). Solutions from Ground_2A and Ground_2B datasets both used only one photo pair, however, results from the ranking-analysis indicate a superior solution generated from the Ground_2B pairing (i.e. upstream/downstream orientation; Table 1) pairing. This could be potentially attributed to the orientation of the images in relation to the channel, in which differences in illumination could hamper the photogrammetric process of automated pixel matching between each photo pair (Marzoff and Poesen, 2009). Additionally, increasing the number of photo pairs used in the solution, does seem to yield improved solutions. Results from the volumetric analysis show that the Quad_35 was a very close approximation (0.0002 m^3) to the LiDAR and Ground_4A (i.e. channel left and right with corner left and right photo pair; Table 1) was within 0.0001 m^3 of the Quad_35. Solutions obtained with “corner left and right photo pair” tended to improve estimates. However, within the overall assessment of data performance, the Ground_4A data finished 8th and small differences between Ground_6A and Ground_8A suggest a potential threshold in the number of photo pairs to which including additional photo pairs adds marginally to the final quality of the solution. Whether or not the datasets were adjusted spatially in accordance to the channel GCP positions, absolute volume differences were similarly ranked between photogrammetry datasets. Point clouds built from higher photo pairs and flights of lower altitudes produced better results, when compared to terrestrial LiDAR; however, the small differences between Ground_6A and Ground_8A suggest a potential threshold in the number of photo pairs to which including additional photo pairs adds marginally to the final quality of the solution.

5.24.2 Monitoring Guidelines

Long-term photogrammetric monitoring of ephemeral gullies should be performed with systems and procedures that: (1) Provide a minimum sampling density to capture the overall and local terrain characteristics based upon study objectives (i.e. temporal headcut migration process understanding may require sub-centimeter resolution data, while temporal channel meander process understanding may only require decimeter resolution) (James and Robson, 2012; Gómez-Gutiérrez et al., 2014). The planning phase of the project must consider the physical characteristics of the process to be investigated, study site physical and environmental variables, and the available hardware and software. (2) Utilize static ground control points visible in comparable photo pairs in all time-step surveys (i.e. fixed known points within the scene provide checks to assure proper three-dimensional registration of temporal data) (e.g. Smith and Vericat, 2015). An organized scheme for control points must be realized for detailed multi-temporal quantitative assessment. Small variations in alignment within temporal surveys will introduce error into length, width, cross-sectional area and volume estimates (e.g. Casali et al., 2015). Repeated realizations of GCP coordinates will always reduce error in survey solutions. (3) Collect the same number of photo pairs using the same sensor and with the same orientation in all time-step surveys (i.e. data collection strategies should not vary temporally and new sensors must be carefully calibrated to preexisting datasets). Consistency in photo collection (i.e. scheduling and no. of photo pairs) will enhance the comparison of temporal solutions (Gómez-Gutiérrez et al., 2014). Also, consider site visits at a particular time of day. (4) Process and generate photogrammetric solutions using the same software package and similar input processing parameters. And, a calibrated camera will always yield better solutions. Two photogrammetric software packages (Pix4DMapper Pro and PhotoModeler Scanner) were used to generate solutions for the UAV platform and ground-based photogrammetry surveys. Pix4DMapper Pro uses a larger number (≥ 3) of overlapping photos, while PhotoModeler Scanner can offer solutions with only two overlapping photos. These software packages differ in the level of user control options for processing and point cloud generation and, point clouds processed by different software packages and/or users could yield very different solutions.

Long-term photogrammetric monitoring of ephemeral gullies should be performed with systems and procedures that: (1) provide a minimum sampling density to capture the overall and local terrain characteristics based upon study objectives (i.e. temporal headcut migration process understanding may require sub-centimeter resolution data, while temporal channel meander process understanding may only require decimeter resolution), (2) utilize static ground control points visible in comparable photo pairs in all time-step surveys (fixed known points within the scene provide checks to assure proper three-dimensional registration of temporal data), (3) collect the same number of photo pairs using the same sensor and with the same orientation in all time-step surveys (i.e. data collection strategies should not vary temporally and new sensors must be carefully calibrated to preexisting datasets), and (4) process and generate photogrammetric solutions using the same software package and similar input processing parameters (perhaps a topic for further study; however, temporal studies should be processed using the same input parameters).

5 Conclusions

Comparative evaluations were completed using terrestrial LiDAR and photogrammetry, both ground and aerial (UAV). None of these methods are without limitation and the ultimate goal of the data collection effort should guide the planning phase of the project. One cautionary note: without GCP there is no reasonable expectation that temporal activities will be successful. Although GCP may increase the workload during data acquisition, this is the only realization that will assure global alignment, minimize project error and enhance process theory development. In terms of survey choice, all results point to a financial and temporal question. What is the project goal? What are the data expectations? Temporal assessment of gully channels and most geomorphic process descriptions can be accomplished with a camera and a few GCPs, whether on the ground or airborne. Each

of the survey methods provided herein performed very well and, although the scoring was not very spectacular, the Fixed_61 data would be satisfactory for most static model evaluations. As expectations rise, so too will the planning and technology.

Acknowledgements

This research was partially funded by grant 1359852 from the U.S. National Science Foundation. Authors would like to acknowledge the support provided by Nathan Stein (remote pilot for the quadcopter UAV), Daniel Murphy (remote pilot for the fixed-wing UAV), Justin Hobart, Tom Buman, Bob Buman, Sarah Anderson and Rick Cruse.
~~This research was partially funded by grant 1359852 from the U.S. National Science Foundation. Authors would like to acknowledge the support provided by Nathan Stein, Daniel Murphy, Tom Buman and Justin Hobart.~~

Disclaimer

The use of trade, firm, or corporation names in this manuscript is for the information and convenience of the reader. Such use does not constitute an official endorsement or approval by the United States Department of Agriculture or the Agricultural Research Service of any product or service to the exclusion of others that may be suitable.

References

- Aguilar, F.J., Agüera, F., Aguilar, M.A., and Carvajal, F.: Effects of terrain morphology, sampling density, and interpolation methods, *Photogram. Eng. and Remote Sens.*, 71(7): 805-816, 2005.
- Aronoff, S. *Remote Sensing for GIS Managers*, ESRI Press, Redlands, California, USA, 2005.
- 5 Bachrach, A., Prentice, S., He, R., Henry, P., Huang, A.S., Krainin, M., Maturana, D., Fox, D. and Roy, N.: Estimation, planning, and mapping for autonomous flight using an RGB-D camera in GPS-denied environments, *Int. J. Rob. Res.*, 31(11): 1320-1343, 2012.
- Baddeley, A. and Turner, R.: Spatstat: An R package for analyzing metric estimation of interaction in inhomogeneous point pattern, *Statistica Neerlandica*, 54: 329-350, 2005.
- 10 Bailey, T.C. and Gatrell, A.C.: *Interactive Spatial Data Analysis*. Longman, Harlow, 1995.
- Bater, C.W. and Coops, N.C.: Evaluating error associated with lidar-derived DEM interpolation, *Computer & Geosciences*, 35: 289-300, 2009.
- Besl, P. and McKay, N.: A Method for Registration of 3-D Shapes, *IEEE Trans. Pattern Analysis and Machine Intelligence*, 14: 239-256, 1992.
- 15 Bivand, R.S., Pebesma, E.J. and Gomez-Rubio, V.: *Applied Spatial Data Analysis with R*, Springer, New York, New York, USA, 2008.
- Bry, A., Richter, C., Bachrach, A., and Roy, N.: Aggressive flight of fixed-wing and quadrotor aircraft in dense indoor environments, *Int. J. Rob. Res.*, 37(7): 969-1002, 2015.
- 20 [Casalí, J., Loizu, J., Campo, M.A., De Santisteban, L.M., and Álvarez-Mozos, J.: Accuracy of methods for field assessment of rill and ephemeral gully erosion, *Catena*, 67\(2\): 128-138, 2006.](#)
- [Casalí, J., Giménez, R., and Campo-Bescos, M.A.: Gully geometry: What are we measuring?, *The Soil*, 1: 509-513, 2015.](#)
- Castillo, C. and Gómez, J.A.: A century of gully erosion research: urgency, complexity and study approaches, *Earth-Science Reviews*, 160: 300-319, 2016.
- 25 [Castillo, C., James, M.R., Redel-Macías, M.D., Pérez, R., Gómez, J.A.: SF3M software: 3-D photo-reconstruction for non-expert users and its application to a gully network. *Soil*, 1: 583-594, 2015.](#)
- Castillo, C., Pérez, R., James, M.R., Quinton, J.N., Taguas, E.V. and Gómez, J.A.: Comparing the accuracy of several field methods for measuring gully erosion, *Soil Sci. Soc. Am. J.*, 76: 1319-1332, doi: 10.21213/sssaj2011.0390, 2012.
- Cook, K.L.: An evaluation of the effectiveness of low-cost UAVs and structure from motion for geomorphic change detection, *Geomorph.*, 278: 195-208, doi:10.1016/j.geomorph.2016.11.009, 2017.
- 30 Csanyi N., Toth, C.K., Grejner-Brzezinska, D., and Ray, J.: Improvement of LiDAR data accuracy using LiDAR specific ground targets, *Proceedings of the 2005 ASPRS Annual Conference*, Baltimore, Maryland, U.S.A., March 7-11, 2005.
- Dabney, S.M., Vieira, D.A.N., and Yoder, D.C.: Predicting ephemeral gully erosion with RUSLER and EphGEE, *Proceedings of Sediment Dynamics from the Summit to the Sea symposium*, New Orleans, Louisiana, U.S.A., 11-14 December, 2014.
- 35 [Di Stefano, C., Ferro, V., Palmeri, V., and Pampaloni, V.: Testing the use of an image-based technique to measure gully erosion at Sparacia experimental area, *Hydrol. Proc.*, 31: 573-585, doi: 10.1002/hyp.11048, 2017.](#)
- Dodd, M.: Where are my quadrats? Positional accuracy in fieldwork, *Methods in Ecology and Evolution*, 2: 576-584, doi: 10.1111/j.2041-210x.2011.00118x, 2011.
- Eitel, J.U.H., Höfle, B., Vierling, L.A., Abellán, A., Asner, G.P., Deems, J.S., Glennie, C.L., Joerg, P.C., LeWinter, A.L., Magney, T.S., Mandlbürger, G., Morton, D.C., Müller, J., and Vierling, K.T.: Beyond 3-D: The new spectrum of lidar applications for earth and ecological sciences, *Remote Sensing of Environment*, 186: 372-392, 2016.
- 40 [Eitel, J.U.H., Williams, C.J., Vierling, L.A., Al-Hamdan, O.Z., and Pierson, F.B.: Suitability of terrestrial laser scanning for studying surface roughness effects on concentrated flow erosion processes in rangelands, *Catena*, 87: 398-407, 2011.](#)
- Eltner, A., A. Kaiser, C. Castillo, G. Rock, F. Neugirg, and A. Abellá. 2016. Image-based surface reconstruction in geomorphometry – merits, limits and developments. *Earth Surf. Dynam.*, 4: 359-389, doi: 10.5194/esurf-4-359-2016.
- 45 ESRI: *ArcGIS Desktop: Release 10*, Redlands, CA: Environmental Systems Research Institute, 2011.
- Foster, G.R.: Modeling ephemeral gully erosion for conservation planning, *Int. J. Sed. Res.*, 20: 157-175, 2005.
- Gesch, K.R., Wells, R.R., Cruise, R.M., Momm, H.G., and Dabney, S.M.: Quantifying uncertainty of measuring gully morphological evolution with close-range digital photogrammetry, *Soil Sci. Soc. of Am. J.*, 79(2): 650-659, 2015.
- 50 [Gómez-Gutiérrez, A., Schnabel, S., Berenguer-Sempere, F., Lavado-Contador, F., and Rubio-Delgado, J. Using 3D photo-reconstruction methods to estimate gully headcut erosion, *Catena*, 120, 91-101, 2014.](#)
- Hawdon, A.A., Wilkinson, S.N., Kinsey-Henderson, A.E., Goodwin, N., Bartley, R., and Baker, B.W.: Rapid acquisition of gully topography using a mobile, handheld laser scanner, *Proceedings of the 7th International Symposium on Gully Erosion*, West Lafayette, Indiana, USA, May 23-27, 2016.
- Hodgson, M.E. and Bresnahan, P.: Accuracy of Airborne Lidar-Derived Elevation: Empirical Assessment and Error Budget, *Photogram. Eng. and Remote Sens.*, 70(3): 331-339, 2004.
- 55 Honkavaara, E., Eskelinen, M.A., Pölonen, I., Saari, H., Ojanen, H., Mannila, R., Holmlund, C., Hakala, T., Litkey, P., Rosnell, T., Vijanen, N., and Pulkkanen, M.: Remote sensing of 3-D geometry and surface moisture of a peat production area using hyperspectral frame cameras in visible to short-wave infrared spectral ranges onboard a small unmanned airborne vehicle (UAV), *IEEE Trans. On Geoscience and Remote Sensing*, 54(9): 5440-5454, 2016.

- James, M.R. and Robson, S.: Straightforward reconstruction of 3-D surfaces and topography with a camera: Accuracy and geoscience application, *J. Geophys. Res.*, 117, F03017, doi: 10.1029/2011JF002289, 2012.
- James, M.R. and Robson, S.: Mitigating systematic error in topographic models derived from UAV and ground-based image networks, *Earth Surf. Process. Landforms*, 39: 1413-1420, 2014.
- 5 Kienzle, S.: The effect of DEM raster resolution on first order, second order, and compound terrain derivatives, *Trans. in GIS*, 8(1): 83-111, 2004.
- Kukko, A., Kaartinen, H., Hyyppä, J. and Chen, Y.: Multiplatform mobile laser scanning: usability and performance, *Sensors*, 12: 11712-11733, 2012.
- 10 Lloyd, C.D.: *Spatial Data Analysis – An Introduction for GIS Users*. Oxford University Press, New York, NY, U.S.A., 2010.
- Marsolff, I.: Advances in image-based measuring and monitoring of gully erosion, *Proceedings of the 7th International Symposium on Gully Erosion*, West Lafayette, Indiana, U.S.A., May 23-27, 2016.
- Marzolff, I. and Poesen, J.: The potential of 3D gully monitoring with GIS using high-resolution aerial photography and a digital photogrammetry system, *Geomorph.*, 111: 48-60, 2009.
- 15 Marzolff, I., Ries, J.B., and Albert, K.-D.: Kite aerial photography for gully monitoring in Sahelian landscapes, *Proceedings of the Second Workshop of the EARSel, Special Interest Group on Remote Sensing for Developing Countries*. 18-20 September, 2002, Bonn, Germany, CD-ROM publication, 2003.
- Micheletti, N., Chandler, J.H., and Lane, S.N.: Investigating the geomorphological potential of freely available and accessible structure-from-motion photogrammetry using a smart phone, *Earth Surf. Process. Landforms*, 40(4): 473-486, 2015.
- 20 Milenković, M., Pfeifer, N. and Glira, P.: Applying terrestrial laser scanning for soil surface roughness assessment, *Remote Sens.*, 7: 2007-2045, 2015.
- Momm, H.G., Bingner, R.L., Wells, R.R., and Dabney, S.M.: Methods for Gully Characterization in Agricultural Croplands using Ground-Based Light Detection and Ranging, *Sediment Transport – Flow and Morphological Processes*, ABM Faruk Bhuiyan (Ed.), ISBN 978-953-307-374-3, InTech, 2011.
- Momm, H.G., Bingner, R.L., Wells, R.R., Dabney, S.M., and Frees, L.D.: Effect of Terrestrial LiDAR Point Sampling Density in Ephemeral Gully Characterization, *Open Journal of Modern Hydrology*, 3(1): 38-49, 2013a.
- 25 Momm, H.G., Bingner, R.L., Wells, R.R., Rigby, J.R., and Dabney, S.M.: Effect of topographic characteristics on compound topographic index for identification of gully channel initiation locations, *Trans. of ASABE*, 56(2): 523-537, 2013b.
- Piermattei, L., Carturan, L., de Blasi, F., Tarroli, P., Fontana, G.D., Vettore, A., and Pfeifer, N.: Suitability of ground-based SLM-MVS for monitoring glacial and periglacial processes. *Earth Surf. Dynam.*, 4: 425-443. doi:10.5194/esurf-4-425-2016, 2016.
- 30 Ries, J.B. and Marzolff, I.: Monitoring of gully erosion in the Central Ebro Basin by large-scale aerial photography taken from a remotely controlled blimp, *Catena*. 50: 309-328, 2003.
- Rietdorf, A., Daub, C., and Loef, P.: Precise positioning in real-time using navigation satellites and telecommunication, *Proceedings of the 3rd Workshop on Positioning and Communication (WPNC '06; <http://wpnc.net/proceedings06.html>)*, Hannover, Germany, 16 March, 2006.
- 35 Smith, M.W. and Vericat, D.: From experimental plots to experimental landscapes: topography, erosion and deposition in sub-humid badlands from structure-from-motion photogrammetry, *Earth Surf. Process. Landforms*, 40: 1656-1671, 2015.
- Soil Science Society of America: Glossary of soil science terms. Madison: Soil Science Society of America. 2008.
- 40 Vinci, A., Brgante, R., Todisco, F., Mannocchi, F., and Radicioni, F.: Measuring rill erosion by laser scanning, *Catena*, 124: 97-108. doi: 10.1016/j.catena.2014.09.003, 2015.
- Wehr, A. and Lohr, U.: Airborne laser scanning – An introduction and overview, *ISPRS Journal of Photogrammetry and Remote Sensing*, 54(2-3): 68-82, 1999.
- Wells, R.R., Momm, H.G., Bennett, S.J., Gesch, K.R., Dabney, S.M., Cruse, R., and Wilson, G.V.: A measurement method for rill and ephemeral gully erosion assessments, *Soil Sci. Soc. Am. J.*, 80: 203-3214, 2016.
- 45 Wheaton, J.M., Brasington, J., Darby, S.E., and Sear, D.A.: Accounting for uncertainty in DEMs from repeat topographic surveys: improved sediment budgets, *Earth Surf. Process. Landforms*, 35: 136-156, 2010.
- Zevenbergen, L.: Modelling erosion using terrain analysis. Ph.D. thesis. London, UK: Department of Geography and Earth Science, Queen Mary College, University of London, 1989.
- 50 Zhang, W. and Montgomery, D.R.: Digital elevation model grid size, landscape representation, and hydrologic simulations, *Water Resour. Res.*, 30(4): 1019-1028, 1994.
- Ziadat, F.M.: Effect of contour intervals and grid cell size on the accuracy of DEMs and slope derivatives, *Trans. in GIS*, 11(1): 67-81. 2007.

Table 1: Datasets generated by three distinct surveying methods for the purpose of quantifying locational uncertainty in gully studies.

Dataset Identification	Dataset Description
Grd_2A	Channel left and right photo pair
Grd_2B	Upstream and downstream photo pair
Grd_4A	Channel left and right with corner left and right photo pair
Grd_4B	Upstream and downstream with corner left and right photo pair
Grd_4C	Upstream and downstream with channel left and right photo pair
Grd_6A	Upstream, downstream, channel left and right with corner left and right photo pair
Grd_8A	Upstream, downstream, channel left and right with both corner photo pairs
Quad_20m	Quadrotor flight at 20 m above ground surface
Quad_35m	Quadrotor flight at 35 m above ground surface
Fixed_61m	Fixed-wing flight at 61 m above ground surface
Fixed_122m	Fixed-wing flight at 122 m above ground surface
LiDAR	Terrestrial LiDAR survey (reference)

*Dashed lines represent delineation between survey modes.

Table 2: Metrics used in the ranking analysis of photogrammetric measurements.

Metric	Analysis	Description
M1	Volume calculations from gridded data	Absolute volume difference between photogrammetric and LiDAR generated raster grids.
M2	Volume calculations from gridded data	Iterative accumulation of individual raster grid cell elevation differences using absolute values.
M3	Cross-section comparisons	Averaged coefficient of correlation between photogrammetric and LiDAR cross-section elevation values derived from raster grid analysis.
M4	Cross-section comparisons	Averaged standard error between photogrammetric and LiDAR cross-section elevation values derived from raster grid analysis.
M5	Cross-section comparisons	Averaged area percent difference between photogrammetric and LiDAR cross-section elevation values derived from raster grid analysis.
M6	Spot elevation	Range of elevation difference between LiDAR three-dimensional irregular mesh and gridded photogrammetry.
M7	Spot elevation	Variance of elevation difference between LiDAR and photogrammetry elevation values.
M8	Spot elevation	Mean elevation difference between LiDAR and photogrammetry elevation values.
M9	Spot elevation	Coefficient of correlation between LiDAR and photogrammetry elevation values.
M10	Spot elevation	Standard error of linear regression between LiDAR and photogrammetry elevation values.
M11	Normal to plane	Range of elevation difference between fitted plane to nearest neighbors LiDAR points and gridded photogrammetry.
M12	Normal to plane	Variance of elevation difference between LiDAR and photogrammetry elevation values.
M13	Normal to plane	Mean elevation difference between LiDAR and photogrammetry elevation values.
M14	Normal to plane	Coefficient of correlation between LiDAR and photogrammetry elevation values.
M15	Normal to plane	Standard error of linear regression between LiDAR and photogrammetry elevation values.

Table 23: Statistics comparing photogrammetry and terrestrial LiDAR using the point normal projected into fitted plane analysis. Residual values were calculated based on coordinate difference of all raster grid cells.

Dataset	Minimum Z axis difference (m)	Maximum Z axis difference (m)	Variance Z axis difference (m)	Mean Z axis difference (m)	Fitting linear model between photogrammetry and LiDAR in Z-axis				
					Slope	Intercept	r-value	P-value	Standard error (m)
Fixed_122	-0.0227	0.0231	0.0001	-0.0038	0.8564	50.6434	0.9332	0.0000	0.0029
Fixed_61	-0.0229	0.0229	0.0001	-0.0074	0.9284	25.2422	0.9793	0.0000	0.0010
Quad_35	-0.0205	0.0216	0.0000	0.0002	0.9935	2.2965	0.9959	0.0000	0.0004
Quad_20	-0.0148	0.0193	0.0000	0.0053	1.0315	-11.1177	0.9970	0.0000	0.0004
Ground_2A	-0.0226	0.0225	0.0000	0.0059	1.0239	-8.4214	0.9937	0.0000	0.0005
Ground_2B	-0.0192	0.0216	0.0000	0.0061	1.0258	-9.0910	0.9985	0.0000	0.0003
Ground_4A	-0.0219	0.0229	0.0000	0.0007	1.0027	-0.9458	0.9949	0.0000	0.0005
Ground_4B	-0.0212	0.0228	0.0000	0.0059	1.0203	-7.1574	0.9984	0.0000	0.0003
Ground_4C	-0.0218	0.0223	0.0000	0.0055	1.0178	-6.2732	0.9976	0.0000	0.0003
Ground_6A	-0.0204	0.0215	0.0000	0.0052	1.0219	-7.7293	0.9984	0.0000	0.0003
Ground_8A	-0.0197	0.0219	0.0000	0.0040	1.0177	-6.2473	0.9982	0.0000	0.0003

Fitting linear model between photogrammetry and LiDAR in Y-axis

Dataset	Minimum Y axis difference (m)	Maximum Y axis difference (m)	Variance Y axis difference (m)	Mean Y axis difference (m)	Slope	Intercept	r-value	p-value	Standard error (m)
Fixed_122	-0.0169	0.0164	0.0000	0.0004	1.0001	-511.3216	1.0000	0.0000	0.0001
Fixed_61	-0.0180	0.0165	0.0000	0.0002	0.9974	12467.67	1.0000	0.0000	0.0000
Quad_35	-0.0138	0.0158	0.0000	0.0004	0.9998	917.4185	1.0000	0.0000	0.0000
Quad_20	-0.0112	0.0153	0.0000	0.0004	1.0016	-7635.98	1.0000	0.0000	0.0000
Ground_2A	-0.0161	0.0164	0.0000	0.0002	1.0020	-9613.20	1.0000	0.0000	0.0000
Ground_2B	-0.0166	0.0162	0.0000	0.0003	1.0025	-11557.52	1.0000	0.0000	0.0000
Ground_4A	-0.0165	0.0157	0.0000	0.0003	1.0004	-1749.80	1.0000	0.0000	0.0000
Ground_4B	-0.0165	0.0154	0.0000	0.0003	1.0023	-10955.43	1.0000	0.0000	0.0000
Ground_4C	-0.0165	0.0134	0.0000	0.0002	1.0021	-9880.48	1.0000	0.0000	0.0000
Ground_6A	-0.0163	0.0155	0.0000	0.0003	1.0021	-9835.37	1.0000	0.0000	0.0000
Ground_8A	-0.0172	0.0143	0.0000	0.0003	1.0016	-7588.89	1.0000	0.0000	0.0000

Fitting linear model between photogrammetry and LiDAR in X-axis									
Dataset	Minimum X axis difference (m)	Maximum X axis difference (m)	Variance X axis difference (m)	Mean X axis difference (m)	Slope	Intercept	r-value	p-value	Standard error (m)
Fixed_122	-0.0111	0.0098	0.0000	0.0000	1.0002	-88.1715	1.0000	0.0000	0.0001
Fixed_61	-0.0126	0.0094	0.0000	-0.0001	1.0005	-176.6591	1.0000	0.0000	0.0000
Quad_35	-0.0079	0.0042	0.0000	-0.0001	0.9999	21.3139	1.0000	0.0000	0.0000
Quad_20	-0.0055	0.0055	0.0000	-0.0001	0.9998	90.0612	1.0000	0.0000	0.0000
Ground_2A	-0.0113	0.0065	0.0000	-0.0001	0.9999	49.4894	1.0000	0.0000	0.0000
Ground_2B	-0.0114	0.0048	0.0000	0.0000	0.9999	28.8352	1.0000	0.0000	0.0000
Ground_4A	-0.0110	0.0061	0.0000	0.0000	1.0000	-7.5965	1.0000	0.0000	0.0000
Ground_4B	-0.0123	0.0047	0.0000	0.0000	0.9999	35.4773	1.0000	0.0000	0.0000
Ground_4C	-0.0111	0.0052	0.0000	0.0000	0.9999	41.1742	1.0000	0.0000	0.0000
Ground_6A	-0.0111	0.0037	0.0000	0.0000	0.9999	21.1864	1.0000	0.0000	0.0000
Ground_8A	-0.0118	0.0031	0.0000	0.0000	1.0000	13.6678	1.0000	0.0000	0.0000

Table 34: Statistics comparing photogrammetry and terrestrial LiDAR using the point vertical spot to TIN approach (Z-direction). Residual values were calculated based on the elevation difference of all raster grid cells.

Fitting linear model between photogrammetry and LiDAR									
Dataset	Minimum elevation difference (m)	Maximum elevation difference (m)	Variance elevation difference (m)	Mean elevation difference (m)	Slope	Intercept	r-value	p-value	Standard error (m)
Fixed_122	-0.1388	0.0784	0.0019	-0.0346	0.236	269.429	0.449	<.0001	0.00212
Fixed_61	-0.0910	0.0506	0.0003	-0.0144	0.849	53.133	0.939	<.0001	0.00141
Quad_35	-0.0401	0.0538	0.0000	0.0001	0.987	4.589	0.992	<.0001	0.00057
Quad_20	-0.0275	0.0438	0.0000	0.0058	1.029	-10.133	0.994	<.0001	0.00051
Ground_2A	-0.0906	0.0659	0.0001	0.0066	1.023	-8.144	0.985	<.0001	0.00080
Ground_2B	-0.0534	0.0535	0.0000	0.0070	1.024	-8.505	0.996	<.0001	0.00040
Ground_4A	-0.0765	0.0723	0.0001	0.0001	0.985	5.428	0.986	<.0001	0.00074
Ground_4B	-0.0520	0.0509	0.0000	0.0066	1.019	-6.531	0.996	<.0001	0.00040
Ground_4C	-0.0541	0.0517	0.0000	0.0061	1.014	-4.810	0.994	<.0001	0.00049
Ground_6A	-0.0582	0.0506	0.0000	0.0059	1.020	-7.193	0.996	<.0001	0.00040
Ground_8A	-0.0566	0.0486	0.0000	0.0045	1.016	-5.689	0.996	<.0001	0.00039
Lidar	-0.0420	0.0394	0.0000	-0.0001	1.001	-0.257	0.998	<.0001	0.00029

Table 5: Simple statistics of comparative cross-section elevations generated using different surveying methods. Values were calculated for nine cross-sections individually and then averaged.

Dataset	Minimum elevation (m)	Maximum elevation (m)	Average elevation (m)	Variance elevation (m)
Fixed_122	352.551	352.628	352.596	0.0005
Fixed_61	352.492	352.673	352.576	0.0019
Quad_35	352.474	352.659	352.556	0.0025
Quad_20	352.474	352.659	352.556	0.0025
Ground_2A	352.463	352.667	352.555	0.0025
Ground_2B	352.473	352.659	352.554	0.0024
Ground_4A	352.474	352.666	352.561	0.0022
Ground_4B	352.472	352.660	352.555	0.0024
Ground_4C	352.472	352.658	352.555	0.0024
Ground_6A	352.472	352.660	352.555	0.0024
Ground_8A	352.475	352.660	352.557	0.0024
LiDAR	352.472	352.660	352.555	0.0024

Table 46: Volume difference between photogrammetry and terrestrial LiDAR raster grids generated from three-dimensional point clouds.

Dataset	Volume difference (m³)	Cut volume (m³)	Fill volume, (m³)	Absolute volume difference* (m³)
Fixed_122	-0.0422	0.0078	-0.0499	0.0577
Fixed_61	-0.0175	0.0021	-0.0196	0.0217
Quad_35	0.0002	0.0029	-0.0027	0.0056
Quad_20	0.0072	0.0079	-0.0007	0.0085
Ground_2A	0.0081	0.0093	-0.0012	0.0105
Ground_2B	0.0086	0.0088	-0.0002	0.0090
Ground_4A	0.0003	0.0032	-0.0029	0.0062
Ground_4B	0.0082	0.0084	-0.0002	0.0086
Ground_4C	0.0076	0.0080	-0.0005	0.0085
Ground_6A	0.0073	0.0076	-0.0002	0.0078
Ground_8A	0.0056	0.0059	-0.0003	0.0062

* iterative accumulation of individual raster grid cell elevation differences using

absolute values

Table 5: Simple statistics of comparative cross-section elevations generated using different surveying methods. Values were calculated for nine cross-sections individually and then averaged.

Dataset	Minimum elevation (m)	Maximum elevation (m)	Average elevation (m)	Variance elevation (m)
Fixed_122	352.551	352.628	352.596	0.0005
Fixed_61	352.492	352.673	352.576	0.0019
Quad_35	352.474	352.659	352.556	0.0025
Quad_20	352.474	352.659	352.556	0.0025
Ground_2A	352.463	352.667	352.555	0.0025
Ground_2B	352.473	352.659	352.554	0.0024
Ground_4A	352.474	352.666	352.561	0.0022
Ground_4B	352.472	352.660	352.555	0.0024
Ground_4C	352.472	352.658	352.555	0.0024
Ground_6A	352.472	352.660	352.555	0.0024
Ground_8A	352.475	352.660	352.557	0.0024
LiDAR	352.472	352.660	352.555	0.0024

Table 67: Cross-section evaluation comparison between photogrammetry and LiDAR.

Dataset	Fitting linear model between photogrammetry and LiDAR					Wet-Mean area* percent difference	Minimum wet-area* percent difference	Maximum wet-area* percent difference
	Slope	Intercept	r-value	p-value	Standard error			
Fixed_122	0.311	242.937	0.618	<0.0001	0.025	7.79%	4.78%	15.04%
Fixed_61	0.747	89.336	0.882	<0.0001	0.025	3.18%	1.77%	4.44%
Quad_35	1.008	-2.745	0.989	<0.0001	0.009	-0.05%	-0.23%	0.43%
Quad_20	1.048	-17.059	0.990	<0.0001	0.009	-1.36%	-1.70%	-0.64%
Ground_2A	0.969	11.030	0.972	<0.0001	0.015	-1.57%	-2.49%	-0.90%
Ground_2B	1.019	-6.554	0.994	<0.0001	0.007	-1.63%	-1.84%	-1.43%
Ground_4A	0.923	27.163	0.958	<0.0001	0.018	-0.03%	-0.74%	0.69%
Ground_4B	1.028	-9.963	0.994	<0.0001	0.007	-1.55%	-1.71%	-1.38%
Ground_4C	1.028	-9.737	0.993	<0.0001	0.008	-1.44%	-1.61%	-1.24%
Ground_6A	1.030	-10.502	0.994	<0.0001	0.007	-1.38%	-1.53%	-1.08%
Ground_8A	1.031	-10.823	0.996	<0.0001	0.006	-1.06%	-1.26%	-0.76%

* Wet-aArea calculations used a horizontal reference elevation of 353 meters.

Table 7: Metrics used in the ranking analysis of photogrammetric measurements.		
Metric	Analysis	Description
M1	Volume calculations from gridded data	Absolute volume difference between photogrammetric and LiDAR generated raster grids.
M2	Volume calculations from gridded data	Iterative accumulation of individual raster grid cell elevation differences using absolute values.
M3	Cross-section comparisons	Averaged coefficient of correlation between photogrammetric and LiDAR cross-section elevation values derived from raster grid analysis.
M4	Cross-section comparisons	Averaged standard error between photogrammetric and LiDAR cross-section elevation values derived from raster grid analysis.
M5	Cross-section comparisons	Averaged wet area percent difference between photogrammetric and LiDAR cross-section elevation values derived from raster grid analysis.
M6	Spot elevation	Range of elevation difference between LiDAR three dimensional irregular mesh and gridded photogrammetry.
M7	Spot elevation	Variance of elevation difference between LiDAR and photogrammetry elevation values.
M8	Spot elevation	Mean elevation difference between LiDAR and photogrammetry elevation values.
M9	Spot elevation	Coefficient of correlation between LiDAR and photogrammetry elevation values.
M10	Spot elevation	Standard error of linear regression between LiDAR and photogrammetry elevation values.
M11	Normal to plane	Range of elevation difference between fitted plane to nearest neighbors LiDAR points and gridded photogrammetry.
M12	Normal to plane	Variance of elevation difference between LiDAR and photogrammetry elevation values.
M13	Normal to plane	Mean elevation difference between LiDAR and photogrammetry elevation values.
M14	Normal to plane	Coefficient of correlation between LiDAR and photogrammetry elevation values.
M15	Normal to plane	Standard error of linear regression between LiDAR and photogrammetry elevation values.

Table 8: Results from the ranking analysis based on difference metrics of multiple photogrammetric surveys applied to gully channel monitoring.

Volume and cross-section (M1-M5)		Spot elevation (M6-M10)		Normal to plane (M11-M15)		Combined (M1-M15)	
Dataset	Points	Points	Dataset	Points	Dataset	Points	Dataset
Ground_8A	49	Ground_8A	50	Ground_2B	44	Ground_8A	140
Quad_35	42	Ground_4B	41	Ground_6A	42	Ground_6A	121
Ground_6A	38	Ground_6A	41	Ground_8A	41	Ground_4B	114
Ground_4A	37	Quad_20	37	Ground_4B	41	Quad_35	111
Quad_20	35	Quad_35	36	Quad_20	35	Ground_2B	107
Ground_4B	32	Ground_4C	34	Quad_35	33	Quad_20	107
Ground_4C	32	Ground_2B	33	Ground_4C	31	Ground_4C	97
Ground_2B	30	Ground_4A	25	Ground_4A	26	Ground_4A	88
Ground_2A	20	Ground_2A	16	Ground_2A	15	Ground_2A	51
Fixed_61	9	Fixed_61	12	Fixed_122	13	Fixed_61	30
Fixed_122	6	Fixed_122	5	Fixed_61	9	Fixed_122	24

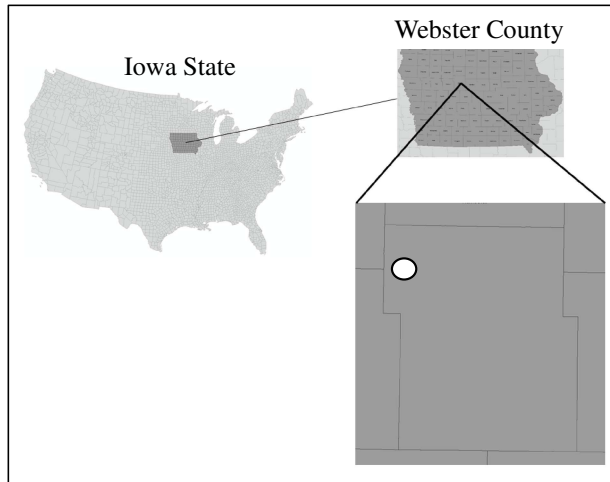


Figure 1: Study site location used in the evaluation of close-range photogrammetric surveys of ephemeral gully channels.

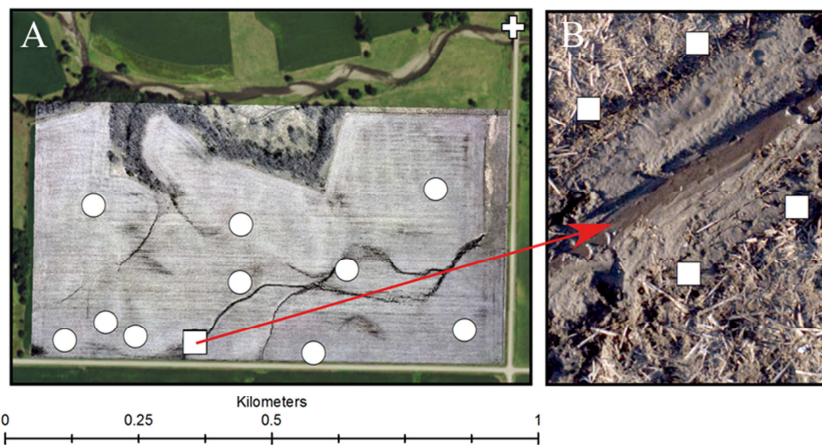


Figure 2: Study site with field ground control points (GCPs; circles), channel GCPs (square) and state monument (cross) on bridge in upper right corner (A). Selected area for detailed surveys and comprehensive evaluation (B).

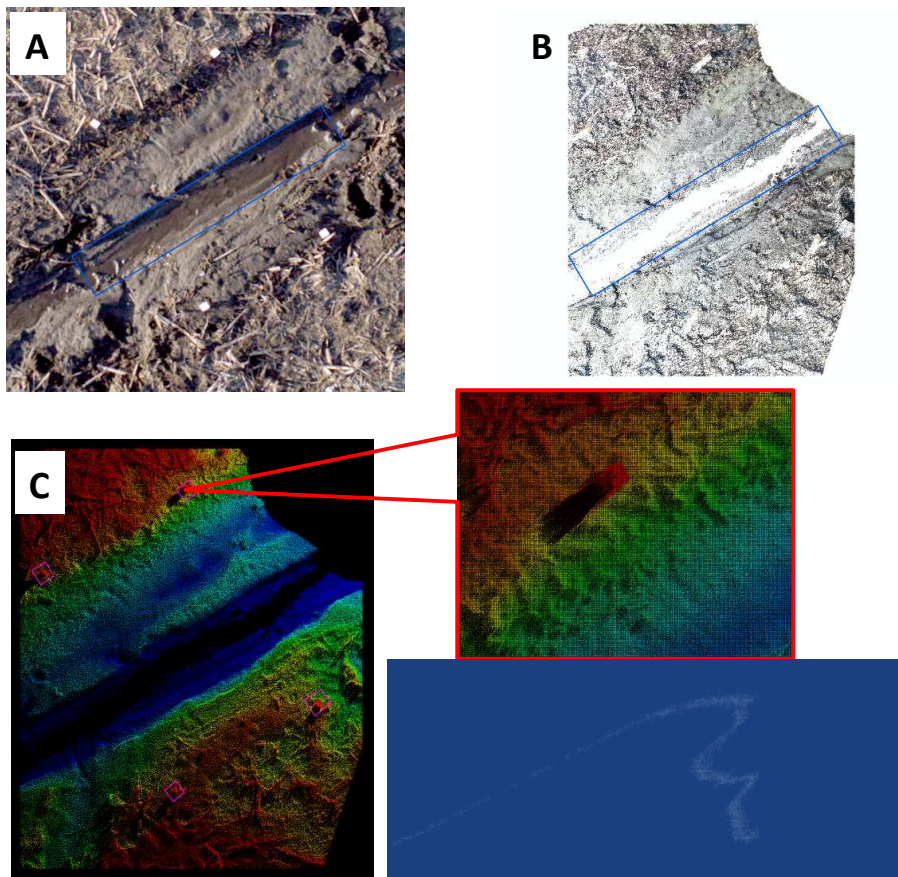


Figure 3: Limitations of ground-based LiDAR survey used as reference dataset. (A) Photograph of AOI shows water in the channel, which limits laser pulse return to the sensor causing sampling gaps in the point cloud (B), and presence of high relief features (GCPs) in the DEM (C) where sharp edges that cause the generation of multiple laser pulse returns due to split footprint effect.

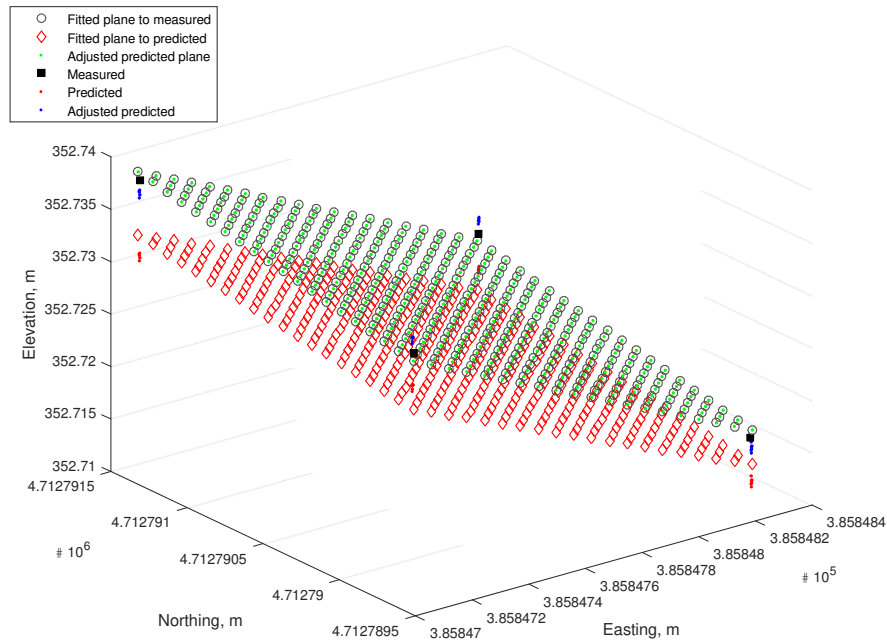


Figure 4: Determination of Affine transformation matrices using Iterative Closest Point (ICP) methodology.

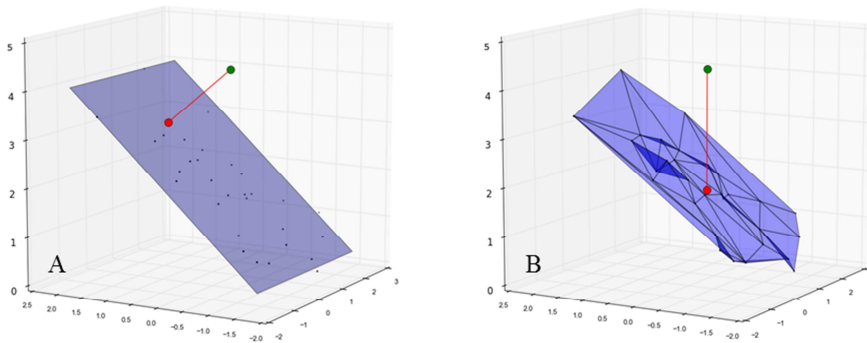


Figure 5: Schematic representation of positional accuracy analysis. Black dots represent reference dataset (LiDAR) and green circle represents point being evaluated. Red circles represent the normal projection of green point onto the tangential plane fitted to the LiDAR dataset (A) and the vertical projection of the green point into the three-dimensional LiDAR-generated Triangular Irregular Network (TIN) (B).

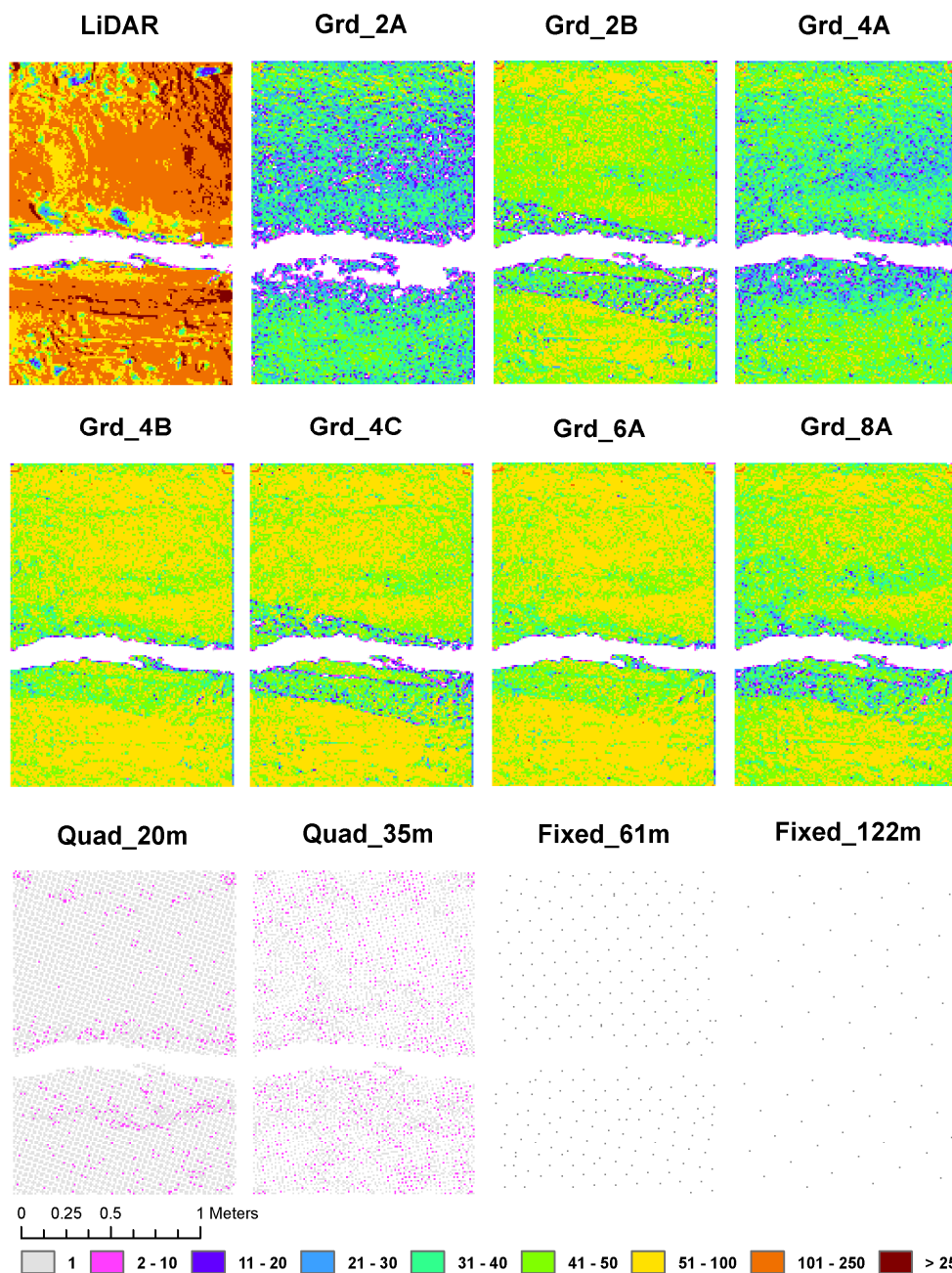


Figure 6: Sampling intensity using the quadrat method for each dataset considered. Individual color represents point sampling count intervals within a 1x1cm virtual grid. Points located in the channel were removed to match the area covered by the LiDAR dataset (herein considered as reference).

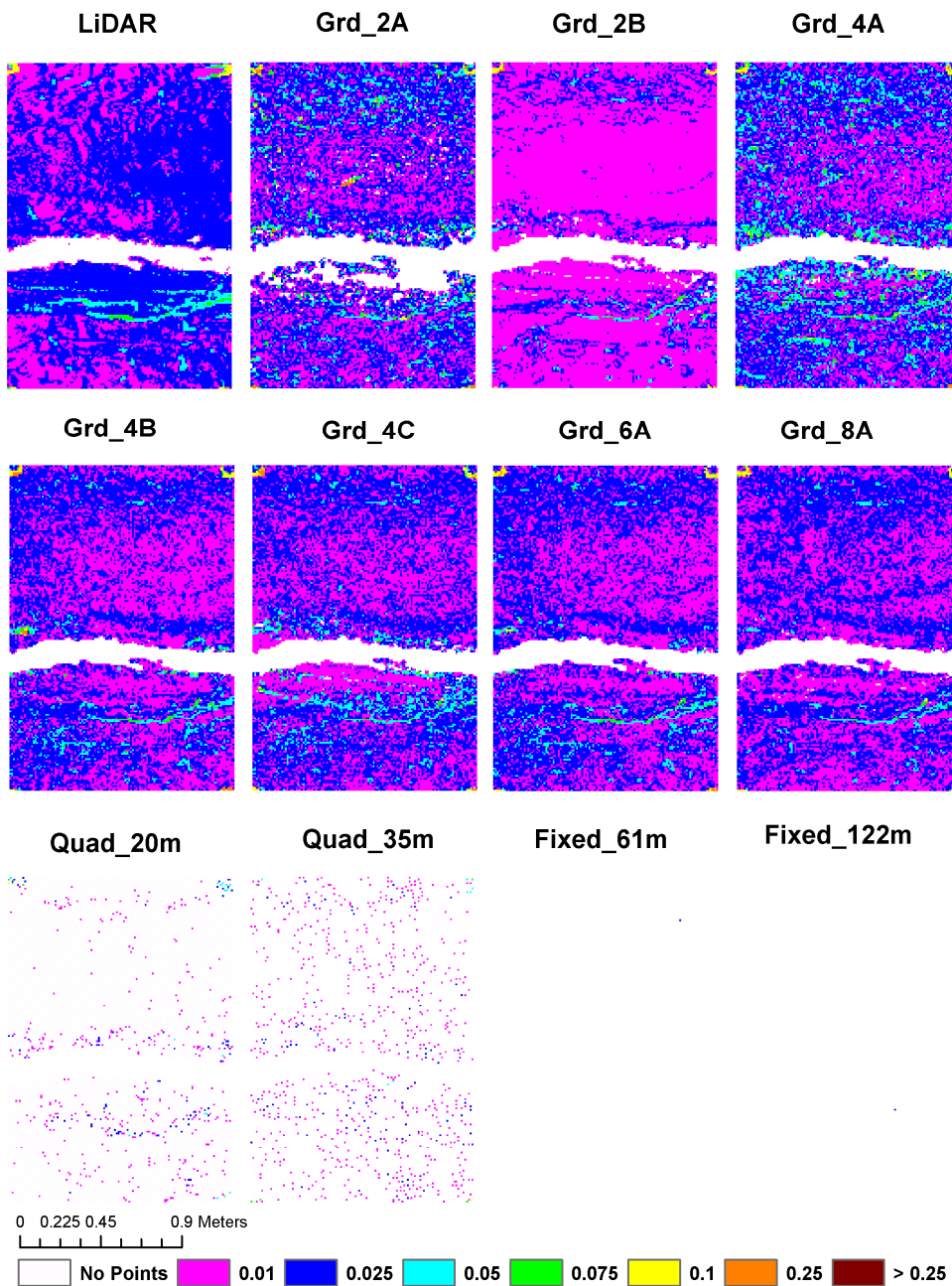


Figure 7: Elevation range (difference between minimum and maximum elevation) represented as individual colors within a 1x1cm virtual grid. Points located in the channel were removed to match the area covered by the LiDAR dataset (herein considered as reference).

Formatted: Font: (Default) Times New Roman, 9 pt

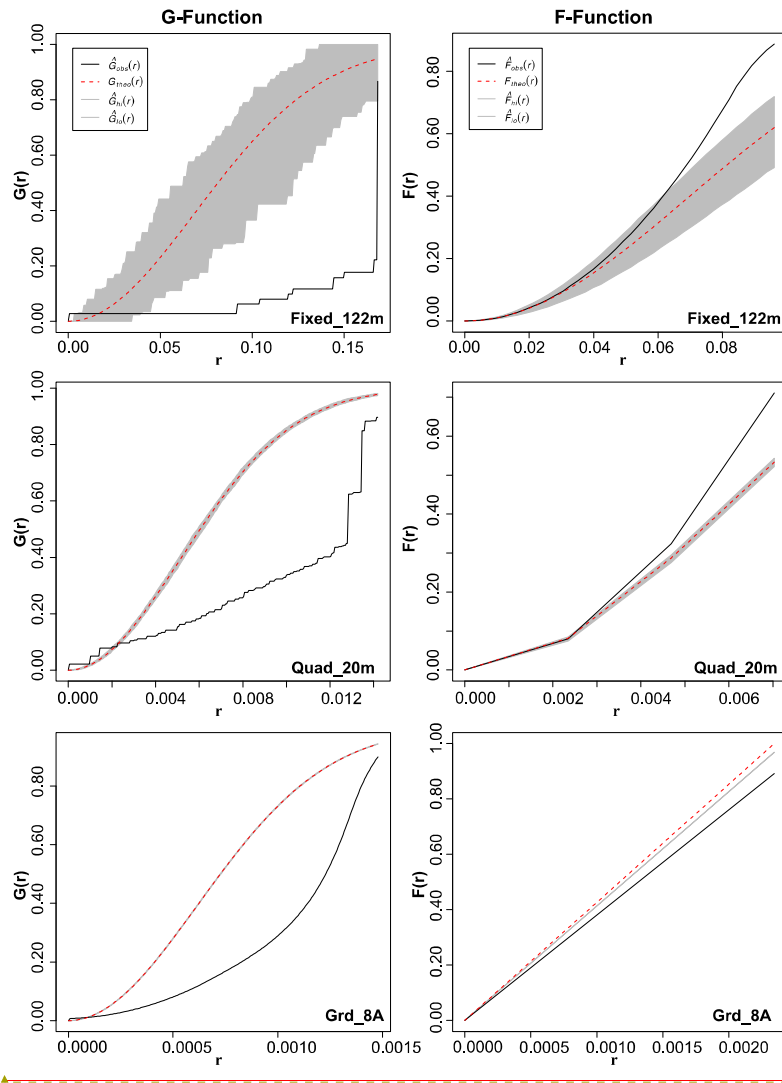


Figure 8: Results of G-Function and F-Function analysis for Fixed_122m, Quad_20m, and Grd_8A datasets.

Formatted: Font: (Default) Times New Roman, 9 pt

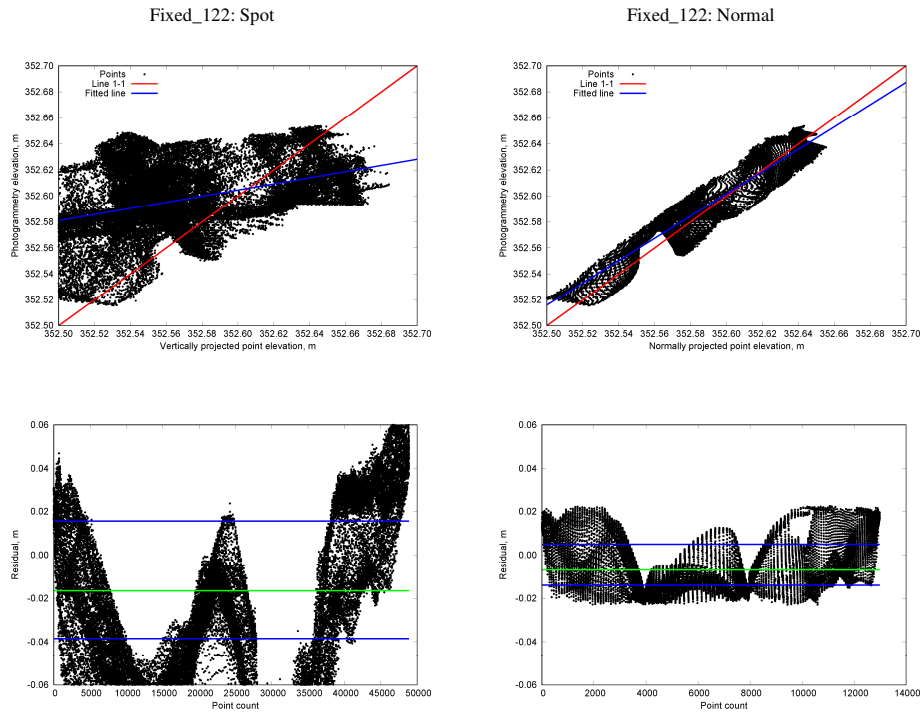


Figure 69: Fixed-wing, at 122 m flight altitude, spot elevation comparison (left column) and normal to plane comparison (right column) of photogrammetry and LiDAR point cloud data with fitted line through the elevations (blue; Spot) and 1:1 line (red; Spot), along with the residuals (green is mean residual and blue lines are 25 and 75 percentiles).

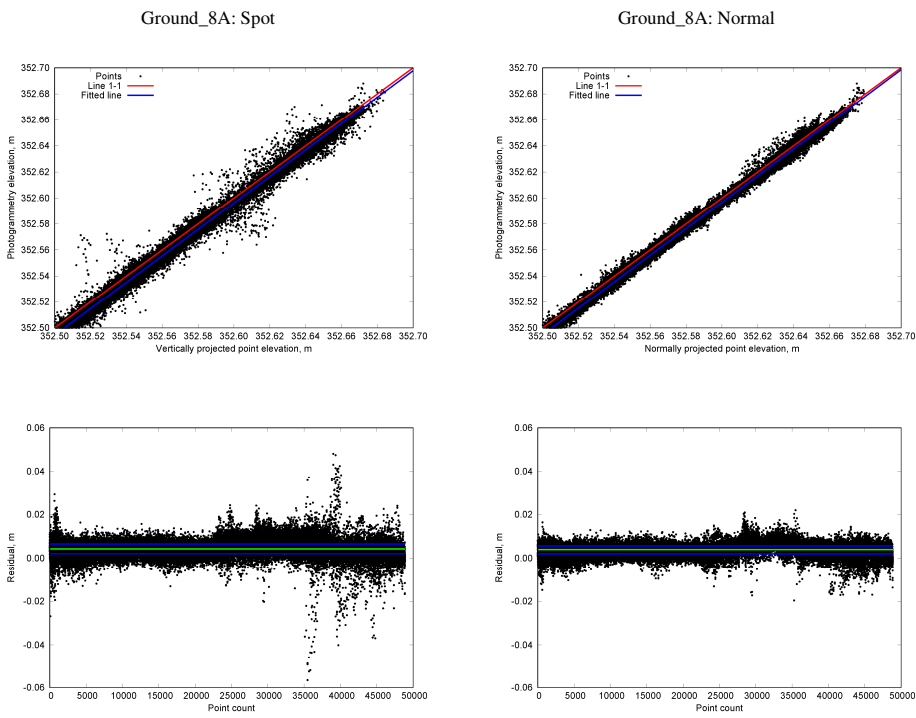


Figure 710: Four photo pair (Ground_8A) spot elevation comparison (left column) and normal to plane comparison (right column) of photogrammetry and LiDAR point cloud data with fitted line through the elevations (blue; Spot) and 1:1 line (red; Spot), along with the residuals (green is mean residual and blue lines are 25 and 75 percentiles).

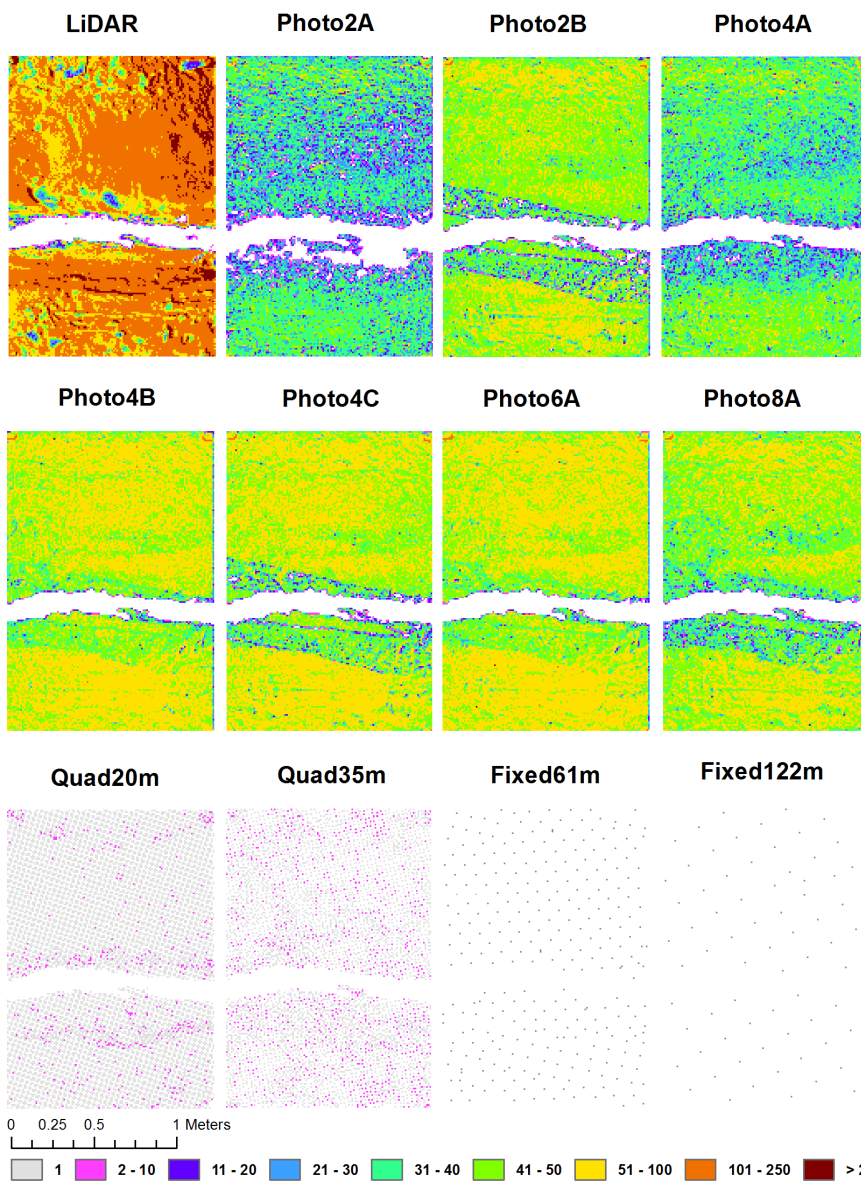
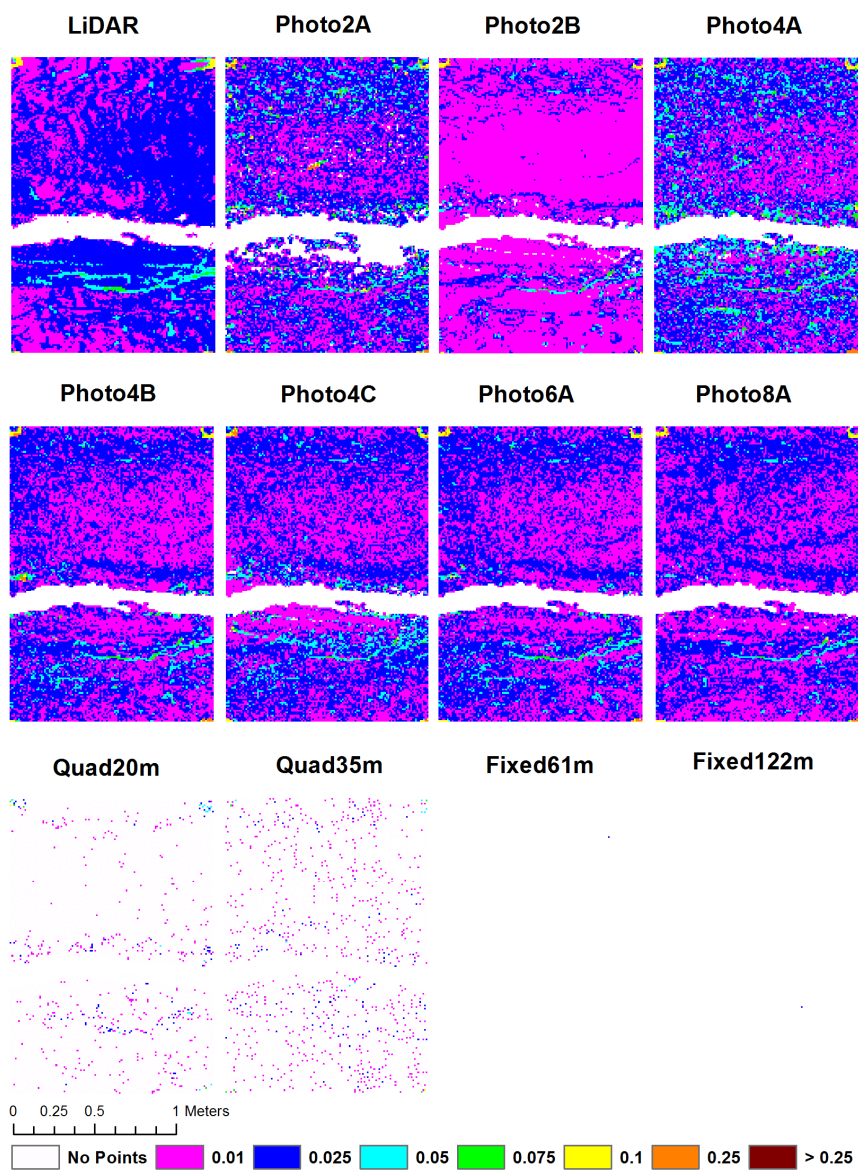


Figure 8: Sampling intensity using the quadrat method for each dataset considered. Individual color represents point sampling count intervals within a 1x1m virtual grid. Points located in the channel were removed to match the area covered by the LiDAR dataset (herein considered as reference).

Formatted: Font: (Default) Times New Roman, 9 pt



Formatted: Font: (Default) Times New Roman, 9 pt

Figure 9: Elevation range (difference between minimum and maximum elevation) represented as individual colors within a 1x1cm virtual grid. Points located in the channel were removed to match the area covered by the LiDAR dataset (herein considered as reference).

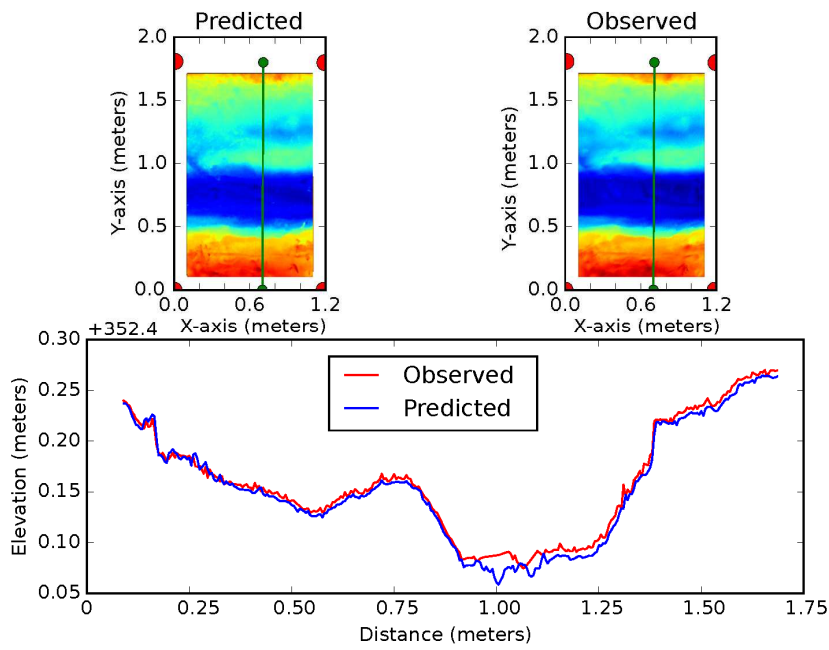


Figure 10: Illustration of interpolating three-dimensional point clouds into raster grid for volume and cross-section analysis of gully monitoring and geomorphologic quantification.

Formatted: Font: (Default) Times New Roman, 9 pt

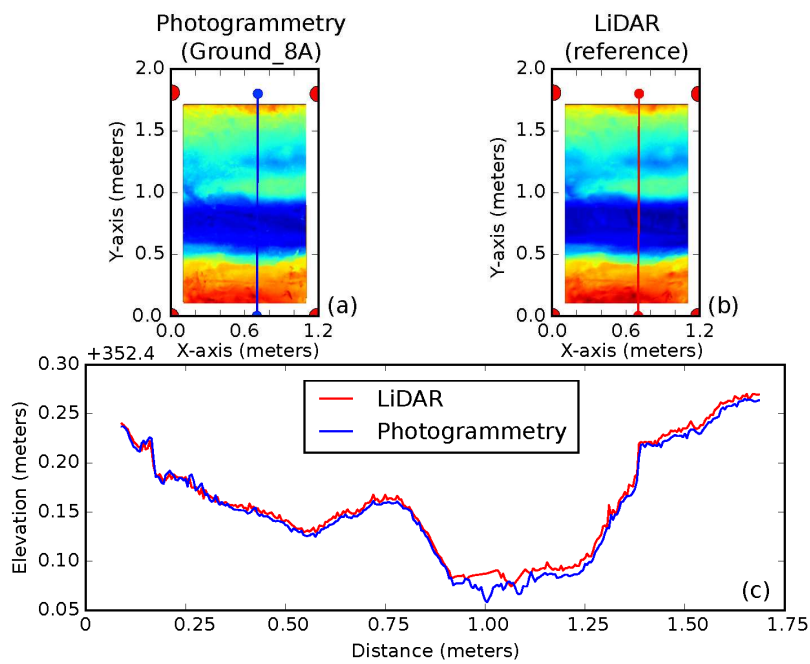


Figure 11: Illustration of three-dimensional point cloud interpolation into raster grids for volume and cross-section analysis of gully monitoring and geomorphologic quantification. Direct comparison of Ground 8A photogrammetry (a) and LiDAR (b) raster grid data with a highlight of one specific cross section (c). The cross section can be realized anywhere within the scene.

Formatted: Font: (Default) Times New Roman, 9 pt

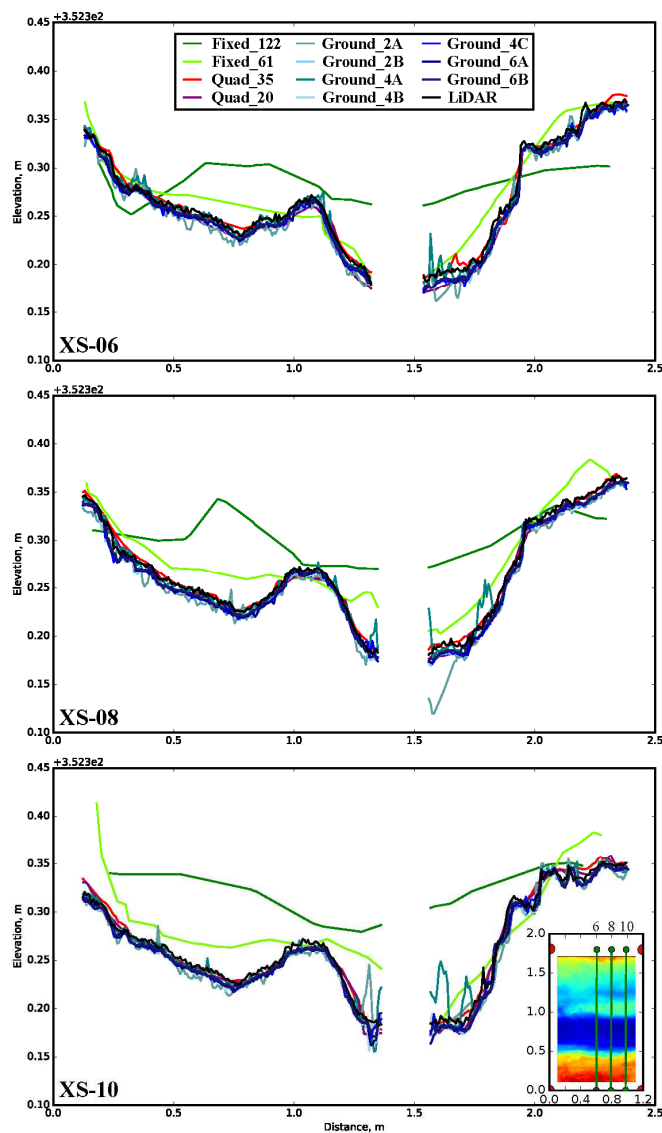


Figure 4.12: Selected cross-sections generated from interpolating point-clouds into 5x5 mm raster grid file.