

Dear colleagues,

Thank you very much for your effort and valuable comments. We have tried to consider every single one of your suggestions – hopefully to your satisfaction.

Best regards

The Authors

## Response to reviewer #1

1. Overall: can you characterize in which cases ICProx works better? E.g. when deformation is all scattered over the scene (rock fall?), or when it is more focused, e.g. when considering a glacier that flows between stable rock beds.

We have added some sentences to the conclusion: “In general, the algorithm performed well for the data presented in sections **Error! Reference source not found.** and **Error! Reference source not found.** where geometric changes occurred in a connected fashion. The most challenging task was represented by the data presented in section **Error! Reference source not found.** due to the fact that deformation was scattered all over the datasets and that the deformation rates were comparably low.

2. Related: could you characterize the different movement related/expected for the three geomorphological processes you consider?

It would be possible to compute deformation vectors similar to Teza et al. (2007) after the datasets would have been registered. However, the approach would only lead to one vector per octree cell and would hence be a “mixed signal” meaning that parts of the cell could move into different directions in reality. Hence, we’re currently working on entity-based approaches rather than generating numbers for individual voxels.

Teza, G., Galgaro, A., Zaltron, N., Genevois, R. (2007): Terrestrial laser scanner to detect landslide displacement fields: a new approach. International Journal of Remote Sensing, 28(16), pp. 3425-3446.

3. Overall: (maybe for discussion): what would be a strategy in case of more than two epochs?

We have added one sentence to the outlook section. However, a general strategy cannot be mentioned since every area of interest requires its own unique strategy, e.g. register all epochs into the reference epoch or register pairwise, epoch 1 into reference epoch, epoch 2 into the geodetic datum of epoch 1 and so on.

“Since geomorphometric monitoring is usually carried out frequently over long periods, strategies have to be developed in order to process time series that consist of several epochs.”

4. Overall: could the method be improved by making it iterative (smaller voxels) to better detect the boundaries of deforming areas?

The reviewer’s suggestion has been considered. The following sentences have been added:

“An alternative strategy could be to apply the ICProx-algorithm in an iterative fashion where the octree size gradually decreases. By this, the boundaries of deformed regions would be detected at a higher resolution.”

5. Overall: or alternatively: could it be extended by a testing step, that after application of optimal transformation parameters, detect which difference can be considered change, given the quality of the data?

This is in fact one of the key features of the algorithm and is hence already implemented. Please see Wujanz et al. (2016) from page 8 onwards for details.

Wujanz, D., Krueger, D. and Neitzel, F.: *Identification of Stable Areas in Unreferenced Laser Scans for Deformation Measurement*. The Photogrammetric Record, 31(155), pp. 261-280, 2016.

#### 6. Overall: how should the voxel size be chosen given the point density and the expected change?

These are two very different aspects. The voxel size controls the resolution of the result – the smaller it is, the finer will be the resolution of the classification process. The local point density on the other hand, which is an inherent characteristic of the input data, controls the detectability. So, if the local point sampling is low, the local detectability of deformation is also comparably low. Quite frank, the algorithm cannot do anything about the data quality. We have mentioned this aspect in the conclusion.

“However, the importance of carefully acquiring data is particularly apparent in section **Error! Reference source not found.** as it clearly demonstrates the inherent link between local sampling density and potential detectability of deformation. It is important to point out that the effects provoked by the sampling uncertainty of TLS notably surpass their capabilities in terms of achievable 3D-precision.”

We have also added two sentences to section 3.

“As already shown in Wujanz et al. (2016b) the choice of the octree cell size has notable effects onto the outcome. In general, a smaller octree size leads to a higher degree of detecting stable regions while the computational effort notably increases. Hence, setting the octree size is a balancing act between resolution and computation time.”

#### 6. Abstract: -> “E.g. terrestrial laser scanners capture a region of interest in a quasi-laminar ...”

The sentence has been rephrased to “...e.g. by capturing a region of interest with terrestrial laser scanners which results in a so-called 3D point cloud.”

#### 7. Abstract: you mention a central problem, but do not state it explicitly, please do so. “The central problem considered in this work is...” To me this seems to be target free registration in areas where it is not clear where stable subareas are.

We tried to argue in a sequential fashion: Problem #1: Computation of transformation parameters. Problem #2: How can one achieve this and what are possible disadvantages? Etc.. In order to clarify this issue the sentence has been altered to:

“The central problem in deformation monitoring is the transformation of 3D point clouds captured at different points in time (epochs) into a stable reference coordinate system.”

#### Abstract: -> “For every case, two epochs... is 70 % on average”. Also mention here the reference data

Sentence has been altered to:

“For every example two epochs were processed while the ICProx-algorithm’s classification accuracy is 70% on average in comparison to reference data.”

#### 9. Intro: -> “Monitoring surface changes...”

The authors have addressed the reviewer’s remark.

“Monitoring surface changes in hazardous areas has been an important task of the geodetic community in the last decades.”

#### 10. Intro, r24: “occurrences”, of what? Please specify.

This sentence now reads:

“Due to the predicted increase of natural disasters (Anderson and Bausch 2006) this problem domain will hence gain importance in the future.”

11. P2r5: “congruence model”? Either explain or omit it here.

Parts of the sentence have been deleted. “In order to process the acquired TLS data, an appropriate deformation model has to be chosen (Heunecke and Welsch 2000).”

12. P3r15: explain in 1-2 lines what radiometric features are and why these can be used for registration;

The according part has been extensively extended and now reads:

“Point clouds captured by terrestrial scanners also contain radiometric information (Höfle and Pfeifer 2007), which is referred to as intensity, in addition to the geometric content. Intensity values are assigned to individual points and are based on the strength of a reflected signal. If the topology of points within a dataset is known this information can be used to convert a point cloud into an image where intensity values represent the brightness of individual pixels. By doing this, well established techniques from the field of image matching can be applied to 3D-datasets. As a first step so called keypoints have to be extracted, which are distinct features within a local neighbourhood in terms of their grey scale values. After keypoint extraction descriptors are used to establish correspondences between keypoints from different datasets (Lowe 1999). Based on this information transformation parameters can be computed. Since the long-term stability of radiometric information captured by TLS has not yet been studied, this strategy is not considered in the following. The successful application over short periods of time has been demonstrated by Böhm and Becker (2007).”

Same, explain what is meant by direct georeferencing.

The according sentence has been extended to “Instead of computing transformation parameters based on established correspondences the relation between different local coordinate systems can also be achieved by observing their location and orientation within a superior coordinate frame. For this, additional sensors are required while the general concept is well known, for instance in aerial photogrammetry (Cramer et al. 2000). Methods for direct georeferencing of TLS were initially just of scientific interest (e.g. Paffenholz et al. 2010) while lately several commercial systems emerged (Riegler 2017), (Zoller + Fröhlich 2017). A significant drawback of direct georeferencing is the extension of a scanner’s error budget (Soudarissanane 2016), due to the use of additional positioning- and orientation sensors such as GNSS-equipment or electronic compasses. With increasing scanning range the impact onto the relative rotation between two point clouds also increases, which is a result of the limited accuracy of compasses.”

P3r31: -> “A substantial advantage of the last strategy is the actual use of the information present in the point cloud”.

The reviewer’s suggestion has been considered.

14. P4r2: -> “In order to obtain a satisfactory..or pre-alignment algorithms” (skip point clouds)

The reviewer’s suggestion has been considered.

“In order to obtain a satisfactory pre-alignment, several strategies appear to be suitable such as direct georeferencing, manual pre-alignment or pre-alignment algorithms.”

15. P4r16-r20 and r 22-24: double information: avoid repetitions

The reviewer’s suggestion has been considered.

“In order to avoid falsification of the deformation measurement process and consequently the analysis of deformation, it is unavoidable to identify deformed areas within point clouds and to reject them from the

computation of transformation parameters. For this task the iterative closest proximity-algorithm (ICProx) was used that consists of three essential phases:”

16. P4r17-> “and identification of deformation..”

The reviewer’s suggestion has been considered.

17. P14r18: again congruent is mentioned but not explained.

The reviewer’s suggestion has been considered.

“Congruent respectively stable areas in terms of geometry are detected by a combinatorial approach termed the maximum subsample method (Neitzel 2004) which is, in terms of robustness against outliers/deformation, more reliable and hence superior to robust estimators or RANSAC.”

18. Ch 2 + Ch 2.1 (p3) could be called “Existing approaches” as this reviews literature. Your methodology basically starts at Ch 2.2, please make this clear.

The structure of chapter 2 has been altered. The caption of Ch. 2.1 has been removed while the content of 2.2 was moved to chapter 3.

P4r29: “The first one automatically....data. For this purpose the 4PCS-algorithm is...

Removal of the first part of the sentence as suggested by the reviewer may confuse the reader since the third sentence in this paragraphs refers to “a step” and not a “phase”. Hence, the sentence has not been modified.

20. P4, last paragraph: what is the third step of Phase 1?

The reviewer’s suggestion has been considered.

“Subsequently the ICP-algorithm is locally applied within each octree cell that represents the last step of Phase 1.”

21. P5r4: -> “that occurred between scan acquisitions”

The reviewer’s suggestion has been considered.

“The general idea behind this approach is to locally increase or decrease the portion of deformation in order to identify geometric changes that occurred between scan acquisitions by means of suitable criteria in Phase 2.”

22. P5r13-r14: “to clarify...object’s surface”: this I don’t get, please clarify.

The reviewer’s suggestion has been considered.

“This information is required in order to determine if an octree cell can be associated to a congruent set of cells or not.”

“The general concept of this feature considers the fact that every scan of a stable object yields in a different point sampling (Wujanz et al. 2016b).”

23. P5r15: how are these “stable regions” obtained?

The reviewer’s suggestion has been considered.

“This time however only stable regions, that were detected in Phase 2, serve as input which are processed as a whole and not in segments.”

24. P5r17: -> “deformation estimation” (not measurement)

The reviewer's suggestion has been considered.

The result of Phase 3 is a set of transformation parameters that forms the basis for the deformation estimation.

25. P5r20: -> "is to identify"

The reviewer's suggestion has been considered.

26.P5r21: I would not call this "segmentation" but "decomposition" or "voxelization"

The reviewer's suggestion has been considered.

27. Table 1: make separate columns for GSD and scanning increment

The reviewer's suggestion has been considered.

28. P7r5: "...at an elevation...and is ~ 900 m long and ~350 m wide"

The reviewer's suggestion has been considered.

29. P7r11: "and has reported to have a slower upper part..."

The reviewer's suggestion has been considered. The according sentence was quite lengthy and thus has been split into two sentences.

"The rock glacier itself shows distinct patterns of surface elevation changes and surface displacements. In addition, the rock glacier has reported to have a slower upper part and a rapidly moving lower part with maximum horizontal displacements of up to 2.5 m per year (Avian et al. 2009)."

30. P7: last paragraph: this is discussing existing work and fits better in a Ch 2 "Existing approaches"

The authors tried to move the very first sentence of the last paragraph into chapter 1 or 2 yet it did not really match the given content. Hence, the sentence remains as it was. The remaining references refer to research that is directly connected to the observed site and thus also remained in its original form.

31. Fig.3, caption I see a white circle, not a red circle?

The reviewer's suggestion has been considered.

"Figure 3: Scanner configuration at Hinteres Langtalkar rock glacier. The scanning position HLK is indicated by a red ellipse with a white edge, the rock glacier outline by a white dashed line. White circles with green edges highlight registration points (image, 28.08.2012)."

32. P8r9: -> "in the Central part of the Austrian Alps"

The suggestion by the reviewer has been considered.

"The Pasterze glacier (N 47°04', E 12°44') is located in the Central part of the Austrian Alps."

33.P8r15: -> "The current retreat of.. glacier has been observed using TLS since 2001..."

"The current retreat of the terminus area of Pasterze glacier has been observed using TLS since 2001 covering an area of appr. 0.9 km<sup>2</sup>."

while 6.3m vertical loss was detected..."

The reviewer's suggestion has been considered.

“On average the annual elevation change within the debris covered part sums up to approximately 3.7 m while 6.3 m vertical loss was detected in the clean ice section between 2011 and 2012.”

34. P9r11: “computed transformation parameters” computed by who?

The reviewer’s suggestion has been considered.

“As a consequence the computed transformation parameters based on the reference points can only be seen as an approximate solution as they are very likely to be subject of extrapolative effects and hence have been refined by surface based registration.”

35. P10: “nunatak mountains”??? Please explain

The reviewer’s suggestion has been considered. An additional reference has been added that covers this geological term.

“The rock fall area Burgstall comprises the two former nunatak mountains (Kellerer-Pirklbauer et al. 2012) of Mittlerer and Hoher Burgstall which were encompassed from Pasterze glacier until the beginning of the 20<sup>th</sup> century.”

36. Ch 4: p11: this page contains more general info, (like classification problem). This kind of info should be presented earlier, chapter 1, or chapter 3. Here just present and analyze the results.

We have carefully considered your suggestion and moved the according paragraph into different chapters. However, we decided to move back to the original logical sequence since the described assessment scheme is quite important for the reader since the results are presented in the very same section.

37. Also here you could mention once how the reference data is obtained; Later in the discussion: what is the effect of the location of the selected stable areas? If this location is rather small or badly covering the full extent of the ROI, this could affect the validation.

We have mentioned how reference data was generated in every subsection of chapter 4, for instance (from section 4.3): “Yet again, the sampling of reference points has to be rated as unfavourable. Hence, initial transformation parameters have been computed based on the reference points. Afterwards, deformed regions were manually rejected while the remaining points were used to refine the relative alignment between points clouds based on the ICP.”

38. Ch4: what do you mean by “inspection map”? Is there not a more descriptive name for these images? Is this not just a “change map”?

The reviewer’s suggestion has been considered. The problem is that there are numerous names for the very same outcome such as inspection map, difference map, change map, deformation map,... We decided to replace “inspection” with “change”

39. P14 r14: -> “in orange corresponding to large and detected geometric changes”

The reviewer’s suggestion has been considered.

“...glacier tongue is highlighted in orange corresponding to large detected geometric changes.”

40. P14r24: can you quantify these “margin of detectability”?

Not exactly, since we cannot visualise the uncertainty of distances between octree cells (the illustration would be chaotic while many coloured lines are overlapping). Instead we have added additional figures where the uncertainty values of individual octree cells are depicted. This shows the reader the heterogeneous distribution and magnitude of uncertainties.

41. P18: could you do and add some experiments with different resamplings (thinning of the data set)?

After long discussions we have decided not to reprocess the data even though we have done similar experiments at the very beginning of this project. We believe that the effect of sampling uncertainty is now a lot clearer to the reader since we have added some more figures according to comment #40.

## Response to reviewer #2

Comment 1: I would expand a little this part, maybe you could also refer directly with the term "intensity".

The reviewer's suggestion has been considered. Please see comment 12. By reviewer #1

Comment 2: Expand, furnish more information on the methodology.

The reviewer's suggestion has been considered.

“As a first step planar segments have to be extracted from the original point clouds. Then, identical planes are computed instead of matching single points such as in radiometric approaches. By using planes instead of points, the precision of the resulting transformation parameters notably increases. However, the approach relies on the existence planar areas within a region of interest and is hence mostly applied in urban environments. The most popular registration method uses redundantly captured regions of two point clouds and is called the iterative closest point algorithm (ICP) as proposed by Besl & McKay (1992). A substantial advantage of the last strategy over the aforementioned ones is the actual use of the information present in the point cloud. A drawback of the algorithm is its dependence to a sufficient pre-alignment of two datasets.”

Comment 3: I'm not sure that this subsection title is fitted to the matter. Maybe simply "pre-alignment methodology" or something similar is more effective.

The reviewer's suggestion has been considered by restructuring the manuscript. The mentioned paragraph can now be found under section 2 existing methods.

Comment 4: But this could be in contradiction with the need to avoid "any form of user-interaction", stated above. At least this could be the first impression the reader could have; however if you say explicitly that ransac method automatically filters out sensitive areas (I mean the ones with high deformation leading to problems of alignment) the possible contradiction is avoided.

The reviewer's suggestion has been considered.

“Kromer et al. (2017) approach this issue by applying Fischler and Bolles' (1981) Random sample consensus (RANSAC) in order to **automatically** reject correspondences between two epochs which either arise as a consequence of deformation or false matches.”

In addition, the following sentence has been modified:

“In order to avoid falsification of the deformation measurement process and consequently the analysis of deformation, it is unavoidable to **automatically** identify deformed areas within point clouds and to reject them from the computation of transformation parameters”

Comment 5: Which is the meaning of "object space"???

The reviewer's suggestion has been considered. The term object space has been replaced by “area of interest”.

Comment 6: sentence not clear

The reviewer's suggestion has been considered by rephrasing the sentence. “ The ICProx is based on a spatial segmentation of the original datasets and identifies deformation respectively stable areas by comparison of locally computed transformation parameters for individual segments (Wujanz et al. 2016b). “

I will fuse this section with 2.1



The reviewer's suggestion has been considered by restructuring the according sections.

**Comment 7:** Say some words to give information on the approach. Sentence not much clear, explain better. Consider rephrasing, the link with the preceding sentence is not clear.

The reviewer's suggestion has been considered.

“Phase 1 in turn contains **three steps** while the first one automatically carries out the pre-alignment of data. Therefore the 4PCS-algorithm as proposed by Aiger et al. (2008) is used in the **first step**. In the **second step**, the coarsely aligned data is segmented in cubes of equal size that are also referred to as octree cells (Samet 2006 p. 211 ff). Subsequently the ICP-algorithm is locally applied within each octree cell that represents the **last step** of Phase 1.

**Comment 8:** How the size is defined?

In the current implementation this step is based on empirical settings. We have mentioned the following in the outlook: “Hence, an extension has to be implemented that is capable to determine an optimal octree size under consideration of the local topography.”

**Comment 9:** Are the candidates stable areas in the selected subdomains???

No, at the very beginning it is not clear which regions in the point clouds are stable. It is the task of the ICProx-algorithm to clarify this issue. Candidates are samples that reduce the data volume of the original dataset. This step is carried out in every implementation.

**Comment 10:** Not clear, is the portion of deformation the size of cubes (octree cells)?

No, but the size of the cubes influences the local amount of deformation. The smaller the cubes the higher the local influence of deformed / stable areas. If the octree size is too small, the ICP will simply fail since it will converge into local minima.

**Comment 11:** sentence not clear

The sentence has been rephrased. See also comment 22 of reviewer #1.

“The general concept of this feature considers the fact that every scan of a stable object yields in a different point sampling (Wujanz et al. 2016b).”

**Comment 12:** I'm wondering if the stables areas should have some requirements (e.g., relative amount of stable areas over unstable, geographical distribution, etc.) in order to have a final good alignment. From your figure 1 stable areas is almost all located on the left side...

The reviewer's suggestion has been considered.

“From a geodetic perspective the most desirable arrangement would be a more or less connected region that is subject to deformation which is surrounded by stable areas. In addition, the ratio between stable and deformed regions should be rather large in order to being able to compute transformation parameters with the highest possible redundancy. However, the distribution of stable areas as well as their relative amount are usually unpredictable in practice since every region of interest has got its own individual characteristics. Countermeasures in order to receive favourable arrangements can be achieved by carrying out the surveys more frequently and/or to perform panorama scans which increases the chance of capturing additional stable areas. It is obvious that the result depicted on the right of **Error! Reference source not found.** may yield in imprecise transformation parameters due to the fact that a large amount of octree cells are subject to deformation while the arrangement of stable cells is unfavourable.”

Comment 13: I would use letters to identify figures.

After discussing your suggestion we have decided to stick to our original scheme.

Comment 14: Did you tried the suggested approach on synthetic data so as to have a kind of benchmark?

We did not use synthetic data yet we have used two different scenarios in order to verify the approach (see Wujanz et al. 2016). In the first one a scanner's viewpoint remained constant over the course of several captured epochs. By this, reference transformation parameters were known: they had to be all 0! In the second one the deformation was locally restricted and well defined (we have used data from a crash test). A third alternative strategy was used in the submitted manuscript.

Wujanz, D., Krueger, D. and Neitzel, F.: *Identification of Stable Areas in Unreferenced Laser Scans for Deformation Measurement*. The Photogrammetric Record, 31(155), pp. 261-280, 2016.

Comment 15: Are you sure that this manually classified map correspond to the true? How you identified stable and unstable areas????

Every manually generated ground truth contains subjective influences. In order to overcome this, we generated the reference in an iterative fashion.

1. Register point clouds based on ICP
2. Generate change map
3. Remove areas with systematic shift / deformation
4. Repeat steps 1 to 3 until only random noise remains

Please also have a look at our remarks to comment 20

Comment 16: "...were sampled with 0.75 m on average."

Every implementation of the ICP contains a downsampling step that reduces the input data in order to i) reduce the required effort for correspondence determination and ii) to restrict the size of the normal equation matrix during parameter estimation. A disadvantage of randomly sampling these "candidates" is that the majority of samples will be located closer to the scanner since the local point density is also closer opposed to regions of the point cloud that are further away. The defined measure means that one candidate should be located every ~0.75 m. This ensures a (approximately) systematic sampling over the original point cloud.

Comment 17: Explain better how the georeferenced reference has been derived as well as its accuracy.

The location of all applied tie points are highlighted in Figure 3 to 5. From a geodetic point of view it is not meaningful to report their accuracy as the distribution is quite unfavourable. One could have placed all tie point 1 m away from the scanner which would yield in very small residuals yet, these values are only valid for this very limited range. We have critically commented this issue throughout the contribution.

Section 4.1 "It can notably be seen that the distribution is rather unfavourable from a geodetic point of view as the active zone of the glacier, that is highlighted by a white dashed line, is not surrounded by registration points. This may lead to extrapolative respectively leverage effects."

Section 4.2 "As a consequence the computed transformation parameters based on the reference points can only be seen as an approximate solution as they are very likely to be subject of extrapolative effects and hence have to be refined by e.g. surface based registration."

Comment 18: Insert legend for colour coded map.

We decided to leave the written description of the colour map at the very beginning of chapter 5. The information was to lengthy for the figure.

Comment 19: Quite high standard deviation, even if I don't think that with 3 values you can compute confidently a standard deviation....I would say that the accuracy of prediction of unstable areas is quite variable (worst case table2).

We have removed the listed standard deviations. The accuracy of the algorithm of course depends on the geometric characteristics of the area of interest, the chosen octree size as well as the point density of the acquired datasets. We have mentioned this aspect several times throughout the contribution, e.g.

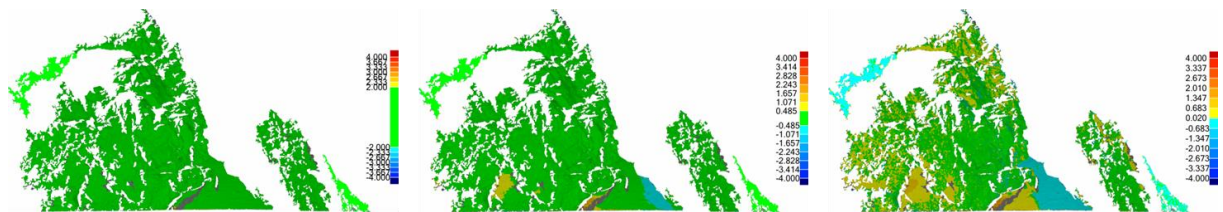
“Hence, an extension has to be implemented that is capable to determine an optimal octree size under consideration of the local topography. This information could also be used to dismiss certain octree cells due to insufficient geometric properties **that would otherwise occur in the algorithm’s numerical and visual assessment.**”

The worst example in this contribution is listed in table 3 (13% of undetected deformation) and not in table 2 (2% of undetected deformation). We have also listed reasons for this effect:

“The numerical assessment of the generated results is depicted in **Error! Reference source not found.** and shows that a comparably large part of deformed areas was not correctly assigned as indicated by the numbers in the red coloured cell. The reason for this is twofold and can be found both in the ratio among the low magnitude of deformation and the corresponding local spatial uncertainties as well as the heterogeneous occurrence of geometric changes.”

Comment 20: To feel more confident I would try the method on synthetic data set where you know truly which are stable and unstable areas. As a second option you should use a case study in which you have a more efficient network of control points so as to have a more accurate and precise reference dataset for comparison.

The precision of the reference data is of course dependent to the registration. We have shown three strategies of how to deal with this problem; please see remarks to comments #14 and 15. Yet, what should also be considered is the influence of the deformation pattern: the chosen settings of these colour coded representations have a large impact onto the outcome and hence, the confusion maps that we produce based on it. If you ask three people to generate change maps you’ll most likely end up with three very different results as shown below.



Hence, we have implemented an algorithm that visualises only statistically significant deformations in dependence to the:

- Local sampling density (as we’ve done in the submitted manuscript)
- Stochastic properties of the applied scanner (Wujanz et al. 2017)
- Inhomogeneous influence of the registration, in contrast to Lague et al. (2013)

Lague, D., Brodu, N. and Leroux, J.: *Accurate 3D comparison of complex topography with terrestrial laser scanner: application to the Rangitikei canyon (NZ)*. ISPRS Journal of Photogrammetry and Remote Sensing, 82, pp. 10-26, 2013.

Wujanz, D., Burger, M., Mettenleiter, M. and Neitzel, F: *An intensity-based stochastic model for terrestrial laser scanners*. ISPRS Journal of Photogrammetry and Remote Sensing, vol. 125, pp. 146-155, 2017.

## Response to reviewer #3

This manuscript aimed to use ICProx algorithm to determine deformations that occurred at a rock glacier. It is an interesting research, but it has a far distance to acceptance. Some of my advices are the following:

(1) The method is presented by this research or by other researches. It is not very clear.

We were not sure what you meant by this.

(2) In abstract, the content about this research is limited. Most of the contents are background introduction.

In general, we as Geodesists try to answer the following questions in the abstract:

What is the general problem?

“Current research questions in the field of geomorphology focus on the impact of climate change on several processes causing subsequently natural hazards. Geodetic deformation measurements are a suitable tool to document such geomorphic mechanisms e.g. by capturing a region of interest with terrestrial laser scanners which results in a so-called 3D point cloud.”

What is the particular problem?

“The central problem in deformation monitoring is the transformation of 3D point clouds captured at different points in time (epochs) into a stable reference coordinate system. To date, this step has been mostly carried out by usage of artificial targets and/or control points. Several drawbacks are related to this strategy such as the enormous effort to distribute the targets within the area of interest, the required survey by additional geodetic sensors such as total stations or GNSS-receivers as well as the limited extent within the region of interest.”

How do we solve the particular problem?

“In this contribution a surface-based registration methodology, termed the iterative closest proximity algorithm (ICProx), that solely uses points as input, similar to the iterative closest point-algorithm (ICP), and hence does not require any artificial targets or extracted geometric primitives, such as planes. The aim of this study was to automatically classify deformations that occurred at a rock glacier, an ice glacier as well as in a rock fall area. For every example two epochs were processed while the ICProx-algorithm’s classification accuracy is 70% on average in comparison to reference data.”

(3) From the introduction part, I can not find what this research aims to do and why conduct this research?

At the end of the first chapter we state the following: “The most delicate step in this processing chain (linked to deformation monitoring) is the transformation of single epochs into a common reference coordinate system, which is also referred to as registration or matching of point clouds. Erroneous effects that occur in this step have an immediate and systematic impact onto the quantification of deformation. Thus, all conclusions that are drawn based on the generated results are falsified.”

(4) The manuscript does not have "Discussion" part. Then, what about this research compared to relevant researches?

We have structured the manuscript in three major parts:

- Section 3: Description of the algorithm
- Section 4: Description of the areas of interest
- Section 5: Discussion of the results

Regarding other research: There is no other algorithm than ours that is capable to automatically identify deformation within unregistered point clouds. Hence, we could not compare to other implementations.

(5) The accuracy is very low in the first study area, especially for the deformation area. Overall, I suggest the authors revise the manuscript in written and structure aspects. I do not think the manuscript can be accepted at its current form.

We weren't sure if you were referring to the classification accuracy. If so, we have added the following sentence that explains the cause of this result.

“Hence, an extension has to be implemented that is capable to determine an optimal octree size under consideration of the local topography. This information could also be used to dismiss certain octree cells due to insufficient geometric properties that would **otherwise occur in the algorithm's numerical and visual assessment.**”

# Identification of stable areas in unreferenced laser scans for automated geomorphometric monitoring

Daniel Wujanz<sup>1</sup>, Michael Avian<sup>2</sup>, Daniel Krueger<sup>3</sup>, Frank Neitzel<sup>1</sup>

<sup>1</sup>Institute of Geodesy and Geoinformation Science, Technische Universität Berlin, Berlin, 10623, Germany

<sup>2</sup>Austrian Institute of Technology GmbH, Tulln, 3430, Austria

<sup>3</sup>GFaI - Society for the Advancement of Applied Computer Science, Berlin, 12489, Germany

Correspondence to: Daniel Wujanz (daniel.wujanz@tu-berlin.de)

**Abstract.** Current research questions in the field of geomorphology focus on the impact of climate change on several processes causing subsequently natural hazards. Geodetic deformation measurements are a suitable tool to document such geomorphic mechanisms e.g. ~~under the use of by capturing a region of interest with~~ terrestrial laser scanners ~~that capture a region of interest in a quasi-laminar fashion~~ which results in a so-called 3D point cloud. ~~In this context the central~~The main problem ~~is linked to~~in deformation monitoring is the transformation of 3D point clouds captured at different points in time (epochs) into a ~~common~~stable reference coordinate system. To date, this step has been mostly carried out by usage of artificial targets and/or ~~control~~points with known coordinates, so called reference points. Several drawbacks are related to this strategy such as the enormous effort to distribute the targets ~~in object space~~within the area of interest, the required survey by additional geodetic sensors such as total stations or GNSS-receivers as well as the limited extent within the region of interest. In this contribution a surface-based registration methodology is presented, termed the iterative closest proximity algorithm (ICProx), that solely uses ~~points~~point cloud data as input, similar to the iterative closest point-algorithm (ICP), and hence does not require any artificial targets or extracted geometric primitives, such as planes. The aim of this study was to automatically ~~determine~~classify deformations that occurred at a rock glacier, an ice glacier as well as in a rock fall area. For every example two epochs were processed while the ICProx-algorithm's classification accuracy is 70% on average in comparison to reference data.

## 1 Introduction

~~The task of monitoring~~Monitoring surface changes in hazardous areas has been an important task of the geodetic community in the last decades. Due to the predicted increase of ~~occurrences~~natural disasters (Anderson and Bausch 2006) this problem domain will hence gain importance in the future. Potential forms of geomorphic natural hazards are rock falls or slides, landslides as well as slow surface movements which may be triggered or enforced by heavy rainfall events. Apart from geomorphic changes the characteristics and geomorphic consequences of glacial retreat are a crucial part of scientific

Style Definition: Default Paragraph Font

Style Definition: Caption: Centered

Formatted: German (Germany)

research (Avian et al. 2017). This interest can be justified by e.g. the function of glaciers as water reservoirs (Bradley et al. 2006) that act as water supply for agriculture and communities downstream (Tirado et al. 2010). A valuable tool for the quantitative analysis of the earth's surface is represented by geomorphometry. The most common forms of geomorphometric monitoring aims to quantify kinematic (Schwalbe et al. 2008), areal (Lambrech and Kuhn 2007) and/or volumetric changes  
5 | over time. A particularly appropriate ~~sensor~~measurement technique for this task is terrestrial laser scanning (TLS) due to its combination of high precision and information density (Avian et al. 2009). In order to process the acquired TLS data, an appropriate deformation model has to be chosen (Heunecke and Welsch 2000), ~~while generally the so-called congruence model is applied.~~ Deformation measurements require the repeated acquisition of a region of interest (ROI) at different points in time that are referred to as epochs. Based on these multi-temporal measurements geometric changes that occurred  
10 | in between epochs can be identified. Therefore a stable reference frame is required that is represented by temporally stable points respectively their 3D-coordinates. In order to provide this vital condition, deformed areas within the ROI have to be identified. Stable points or areas within the ROI can then be used to determine transformation parameters. These parameters allow the transformation of a successively captured epoch into the coordinate system of the reference epoch.

15 | For the determination of geomorphometric measures TLS can be seen as an established acquisition technique (Oppikofer et al. 2008), whose measurements yield in so-called point clouds, i.e. 3D Cartesian coordinates of the captured object in a local coordinate system with its origin in the centre of the laser scanner. In order to quantify geometric differences in different epochs it is recommended to carry out all steps of the following processing chain:

- ~~Viewpoint~~viewpoint planning (Bechtold and Höfle 2016), (Wujanz et al. 2016a ),
- 20 | • ~~Data~~data acquisition at different points in time (van Veen et al. 2017),
- ~~Transformation~~transformation of individual epochs into a stable reference frame,
- ~~Quantification~~quantification of deformation (Jaboyedoff et al. 2012), (Lindenbergh and Pietrzyk 2015).

The most delicate step in this processing chain is the transformation of single epochs into a common reference coordinate  
25 | system, which is also referred to as registration or matching of point clouds. Erroneous effects that occur in this step have an immediate and systematic impact onto the quantification of deformation. Thus, all conclusions that are drawn based on the generated results are falsified. The detectability of geometric changes itself is influenced by the precision of the applied laser scanner (Böhler et al. 2003), (Wujanz et al. 2017) as well as the chosen algorithm for the actual quantification of deformation, see e.g. (Cignoni et al. 1998), (Girardeau-Montaut et al. 2005) or (Lague et al. 2013). While random influences  
30 | onto the results are inevitable, systematic ~~biases~~effects, such as usage of uncalibrated sensors (Neitzel 2006), (Salo et al. 2008), (Al-Manasir and Lichti 2015) or the aforementioned problem when computing transformation parameters, have to be avoided at all costs that otherwise cause bogus deformation.

## ~~2~~ Methodology

## ~~2~~ Related work

Up to now the transformation into a reference coordinate system has been preferably carried out by usage of artificial targets and/or monumented ~~control~~reference points. Several disadvantages can be associated to this strategy such as (i) the effort of distributing the targets in the ~~object space~~area of interest, (ii) the required survey of the targets in order to determine their 3D-coordinates in a reference system and (iii) the limited extent of the targets within the region of interest. In addition, the size of the targets must increase with growing range between scanner and ROI – for ultra-long-range scanners with ranges of up to some kilometres the targets would have to measure several metres. For built-in systems that monitor a ROI over longer periods of time, rotational ~~biases~~deviations of the sensor's home position (Lichti and Licht 2006) that may occur in between epochs are usually refined by using artificial targets, see e.g. (Adams et al. 2013). For this, the assumption has to be made that the majority of targets remains geometrically stable over the course of the survey campaign – which might not be the case. A geodetic principle in the context of computing transformation parameters is that corresponding points should surround the ROI. If this is not the case, extrapolative effects occur quite likely which falsify the outcome. The reason why targets are still commonly used in practice despite its numerous drawbacks can be found in the fact that all well-established operational procedures for total stations are directly transferable to TLS. Numerous alternatives for referencing point clouds exist which can be classified as follows:

- ~~Registration~~registration based on radiometric features,
- ~~Direct~~direct georeferencing of terrestrial laser scanners,
- ~~Use~~use of geometric information.

~~Radiometrically motivated registration approaches have the advantage that they allow the access to well established techniques from the field of image matching. Point clouds captured by terrestrial scanners also contain radiometric information (Höfle and Pfeifer 2007), which is also referred to as intensity, in addition to the geometric content. Intensity values are assigned to individual points and are based on the strength of a reflected signal. If the topology of points within a dataset is known, this information can be used to convert a point cloud into an image where intensity values represent the brightness of individual pixels. By doing this, well-established techniques from the field of image matching can be applied to 3D-datasets. As a first step so called keypoints have to be extracted, which are distinct features within a local neighbourhood in terms of their grey scale values. After keypoint extraction, descriptors are used to establish correspondences between keypoints from different datasets (Lowe 1999). Based on this information, transformation parameters can be computed.~~

Since the long-term stability of radiometric information captured by TLS has not yet been studied, this strategy is not considered in the following. The successful application over short periods of time has been demonstrated by Böhm and Becker (2007).



Instead of computing transformation parameters based on established correspondences, the relation between different local TLS coordinate systems can also be achieved by observing their location and orientation within a superior coordinate frame. For this, additional sensors are required while the general concept is well known, for instance in aerial photogrammetry (Cramer et al. 2000). Methods for direct georeferencing of TLS were initially just of scientific interest (e.g. Paffenholz et al.

5 2010) while lately several commercial systems emerged (Riegl 2017), (Zoller + Fröhlich 2017). A significant drawback of direct georeferencing is the extension of a scanner's error budget (Soudarissanane 2016), due to the use of additional positioning- and orientation sensors such as GNSS-equipment or electronic compasses. With increasing scanning range the impact onto the relative rotation between two point clouds also increases, which is a result of the limited accuracy of compasses.

10 A vital prerequisite for deformation measurement is the repeated acquisition of a region of interest at different ~~time-epochs~~ points in time-epochs. Consequently the corresponding point clouds feature a large degree of overlap that can be used to transform both epochs into a common reference coordinate system. Apart from the aforementioned method of using radiometric features, geometric information can be used in form of geometric primitives, such as planes (Gielsdorf et al. 2008), (Previtali et al. 2014), (technet 2017) ~~or~~. As a first step planar segments have to be extracted from the overlapping original point clouds. Then, identical planes are computed instead of matching single points such as in radiometric approaches. By using planes instead of points, the precision of the resulting transformation parameters notably increases. However, the approach relies on the existence of planar areas within a region of interest and is hence mostly applied in urban environments. The most popular registration method uses redundantly captured regions of two point clouds itself by means of and is called the iterative closest point algorithm (ICP) as proposed by Besl ~~&and~~ McKay (1992). A substantial advantage of the last ~~mentioned~~ strategy over the previously mentioned approaches can be associated to the integral aforementioned ones is the actual use of the information density represented by present in the point clouds cloud. A drawback of ~~the algorithm is its~~ these surface based algorithms is their dependence to a sufficient pre-alignment of two datasets.

## 2.1 Motivation

25 In order to ~~tackle the problem of providing~~ obtain a satisfactory pre-alignment, several strategies appear to be suitable such as direct georeferencing, manual pre-alignment or ~~the application of~~ pre-alignment algorithms for point clouds. The desired solution should not rely on additional sensors or any form of user-interaction. Hence, a two-tiered strategy was chosen that combines different algorithms for the pre- (Aiger et al. 2008) as well as the fine registration (Besl ~~&and~~ McKay, 1992) of point clouds. It is well known that ICP-based approaches are sensitive against deformed regions, which yields in erroneous registrations (Wujanz 2012). Thus, it is of vital importance to reveal deformations within the captured datasets and to exclude these areas from the computation of transformation parameters. Kromer et al. (2017) approach this issue by applying Fischler and Bolles' (1981) ~~Random~~ random sample consensus (RANSAC) in order to ~~reject~~ automatically exclude correspondences between two epochs which either arise as a consequence of deformation or false matches. Since Kromer et al. (2017) process data which has been captured by a permanent monitoring system at high temporal resolution, comparably

Formatted: Normal

low amounts of deformation can be expected between successive epochs. Thus, the risk of potential falsification of the outcome during the registration step by contaminated data should also be rather low, which otherwise may describe an insuperable hurdle for the parameter dependent RANSAC.

~~The applied solution in this article is termed Iterative Closest Proximity algorithm (ICProx) and is based on a segmentation of the object space and identifies deformation respectively stable areas by comparison of derived measures based on locally computed transformation parameters for individual segments (Wujanz et al. 2016b). Congruent stable areas are detected by a combinatorial approach termed the maximum subsample method (Neitzel 2004) which is, in terms of robustness against outliers/deformation, more reliable and hence superior to robust estimators or RANSAC.~~

### ~~2.23~~ Identification of stable areas in unreferenced laser scans

In order to avoid falsification of the deformation measurement process and consequently the analysis of deformation, it is unavoidable to automatically identify deformed areas within point clouds and to ~~reject~~exclude them from the computation of transformation parameters. For this task the iterative closest proximity-algorithm (ICProx) was deployed that will be briefly introduced in the following. The ICProx is based on a spatial decomposition of the original datasets and identifies deformation respectively stable areas by comparison of locally computed transformation parameters for individual segments (Wujanz et al. 2016b). Congruent respectively stable areas in terms of geometry are detected by a combinatorial approach termed the maximum subsample method (Neitzel 2004, p. 109 ff) which is, in terms of robustness against outliers/deformation, more reliable and hence superior to robust estimators or RANSAC. A detailed description can be found in (Wujanz et al. 2016b). The algorithm consists of three essential phases:

- Phase 1: Local alignment of datasets.
- Phase 2: Identification of both stable and deformation areas.
- Phase 3: Computation of transformation parameters based on stable areas.

Phase 1 in turn contains three steps while the first one automatically carries out the pre-alignment of data. Therefore the 4PCS-algorithm as proposed by Aiger et al. (2008) is used- in the first step. In the second step, the coarsely aligned data is ~~segmented~~decomposed in cubes of equal size that are also referred to as octree cells (Samet 2006, p. 211 ff). As already shown in Wujanz et al. (2016b) the choice of the octree cell size has notable effects onto the outcome. In general, a smaller octree size leads to a higher degree of detecting stable regions while the computational effort notably increases. Hence, setting the octree size is a balancing act between resolution and computation time. Subsequently the ICP-algorithm is locally applied within each octree cell that represents the last step of Phase 1. Therefore so-called candidates are sampled in each cell of the reference coordinate system. For all candidates in the reference point cloud, the ICP will determine corresponding points in the second dataset. Thus, every cell receives an individual set of transformation parameters based on the established correspondences.

Formatted: Heading 1

The general idea behind this approach is, to locally increase or decrease the portion of deformation in order to identify geometric changes that occurred ~~over the course of time between scan acquisitions~~ by means of suitable criteria in Phase 2.

5 Therefore the individual sets of transformation parameters are applied to the corresponding centroid of a cell. Subsequently distances between centroids before and after the application of the computed transformation parameters are compared. This strategy is in general comparable to the congruence analysis of geodetic networks by usage of combinatorial methods (Neitzel 2004, p. 109 ff). Congruent and thus stable regions share the following characteristic which helps to identify them: the distances between centroids before and after application of locally computed transformation parameters remain almost  
10 identical. Another unique feature of the algorithm is the automatic computation of uncertainty measures (ISO 2008) that are calculated for the local registration in every octree cell instead of using fixed thresholds. This information is required in order to ~~clarify~~determine if an octree cell can be associated to a congruent set of cells or not. The general concept of this feature considers the fact that every scan of a stable object yields in ~~a~~-different point sampling ~~on an object's surface~~ (Wujanz et al. 2016b). In Phase 3 the ICP is again applied to both epochs. This time however only stable regions, ~~that were~~  
15 ~~detected in Phase 2~~, serve as input which are processed as a whole and not in segments. The result of Phase 3 is a set of transformation parameters that forms the basis for the deformation ~~measurement~~estimation.

Figure 1 depicts a test case on the left where stable areas are coloured in green while deformation is highlighted in yellow.

20 The aim of the ICProx-algorithm is to identify these yellow areas and to ~~reject~~exclude them from the final registration. The centre of the figure illustrates the ~~segmentation~~decomposition of the input data. Every cube receives an individual set of transformation parameters by local application of the ICP-algorithm. After congruence analysis all segments are merged to one continuous dataset as depicted by green areas. Red regions have been classified as deformation and are thus  
~~rejected~~excluded from the registration process.

25 ~~From a geodetic perspective the most desirable arrangement would be a more or less connected region that is subject to deformation which is surrounded by stable areas. In addition, the ratio between stable and deformed regions should be rather large in order to being able to compute transformation parameters with the highest possible redundancy. However, the distribution of stable areas as well as their relative amount are usually unpredictable in practice since every region of interest has got its own individual characteristics. Countermeasures in order to receive favourable arrangements can be achieved by~~  
30 ~~carrying out the surveys more frequently and/or to perform panorama scans which increases the chance of capturing additional stable areas. It is obvious that the result depicted on the right of Figure 1 may yield in imprecise transformation parameters due to the fact that a large amount of octree cells are subject to deformation while the arrangement of stable cells is unfavourable.~~

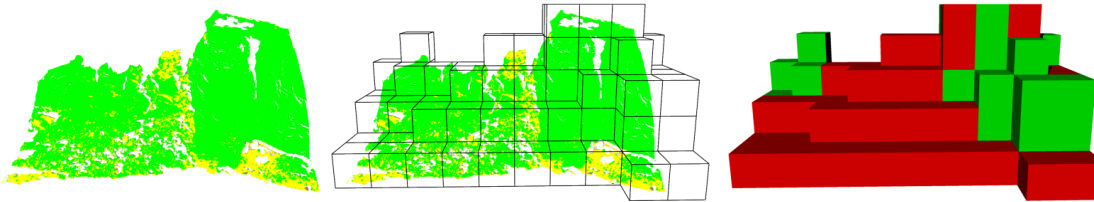


Figure 1: (Left) Binary inspection change map of a test case. (Centre) Octree structure that contains the scene. (Right) Stable (green cubes) and unstable (red cubes) octree cells after congruence analysis.

5 This contribution demonstrates the automatic registration of multi-temporal point clouds as a vital prerequisite for the  
 computation of geomorphometric measures. Therefore a prototypical implementation of the ICProx-algorithm that was  
integrated into the software Final Surface (GFaI 2017) was deployed. Three regions of interest have been processed featuring  
 different landforms such as ice glaciers, rock glaciers and a rock fall area. The study areas are described in detail in section 4  
 while the computed results are subject of section 5. Section 6 summarises the findings presented in this article and gives an  
 10 outlook on future endeavours.

### 34 Study areas

This study comprises three study areas in the Hohe Tauern area of the Central Alps, Austria (, see Figure 2), monitoring  
 three distinct geomorphic process groups:

- Hinteres Langtalkar: Rock glacier movement representing permafrost dynamics.
- 15 • Pasterze Glacier: Glacier retreat with subsequent proglacial processes.
- Mittlerer Burgstall: Rock fall activity.

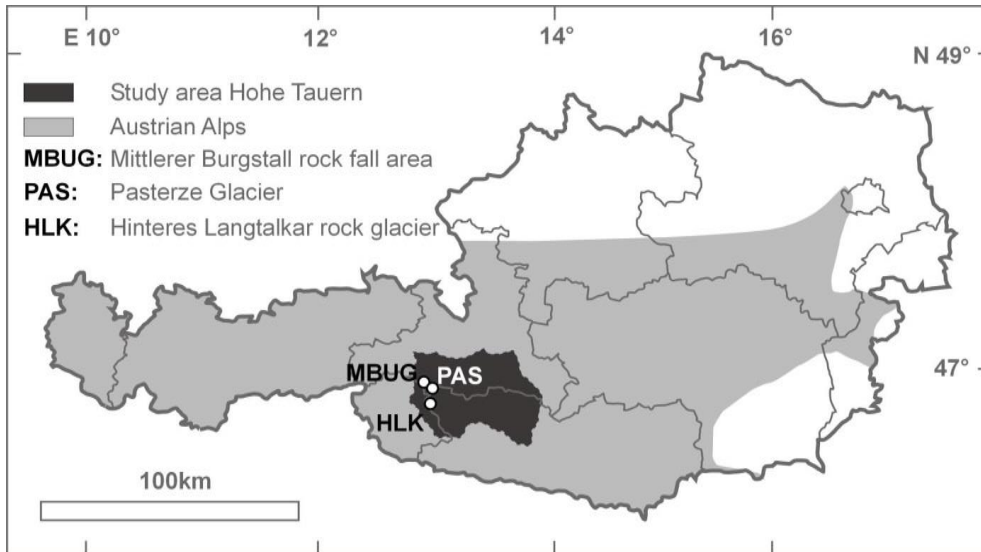


Figure 2: ~~Test sites~~ Study areas Pasterze Glacier, Hinteres Langtalkar rock glacier and Mittlerer Burgstall rock fall area within Austria.

All data sets were ~~aequired~~ captured using a Riegl LMS Z620 laser scanner that applies a wavelength of 1550 nm and is capable to measure distances of up to ~~2.000~~ 2000 m, in applications in the study area 1500 m were achieved. A summary of the characteristics of all epochs is given in Table 1.

**Table 1: Summary of all used measurements in every study area comprising date of acquisition, #number of points: points per epoch, GSD: ground sampling distance (GSD)**

Year	Date of acquisition	# of points [Mio.]	Ground sampling distance (GSD) [cm]	GSD [cm] and scanning increment [deg]
Hinteres Langtalkar rock glacier				
2011	<del>24.08.2011-08-24</del>	1.6	6.6 – 41.8 ( <del>0.15 m-100 m, 0.040 deg</del> )	<u>0.040 deg</u>
2012	<del>05.09.2012-09-05</del>	7.8	4.8 – 33.1 ( <del>0.10 m-100 m, 0.029 deg</del> )	<u>0.029 deg</u>
Pasterze glacier				
2010	<del>13.09.2010-09-13</del>	2.5	20 – 54 cm ( <del>0.25 m-600 m, 0.029 deg</del> )	<u>0.029 deg</u>
2012	<del>10.09.2012-09-10</del>	3.6	16 – 42 cm ( <del>0.20 m-600 m, 0.023 deg</del> )	<u>0.023 deg</u>
Burgstall rock fall area				
2014	<del>08.09.2014-09-08</del>	2.3	20 – 54 cm ( <del>0.25 m-600 m, 0.029 deg</del> )	<u>0.029 deg</u>
2015	<del>12.09.2015-09-12</del>	1.6	20 – 54 cm ( <del>0.25 m-600 m, 0.029 deg</del> )	<u>0.029 deg</u>

Formatted Table

Inserted Cells

Inserted Cells

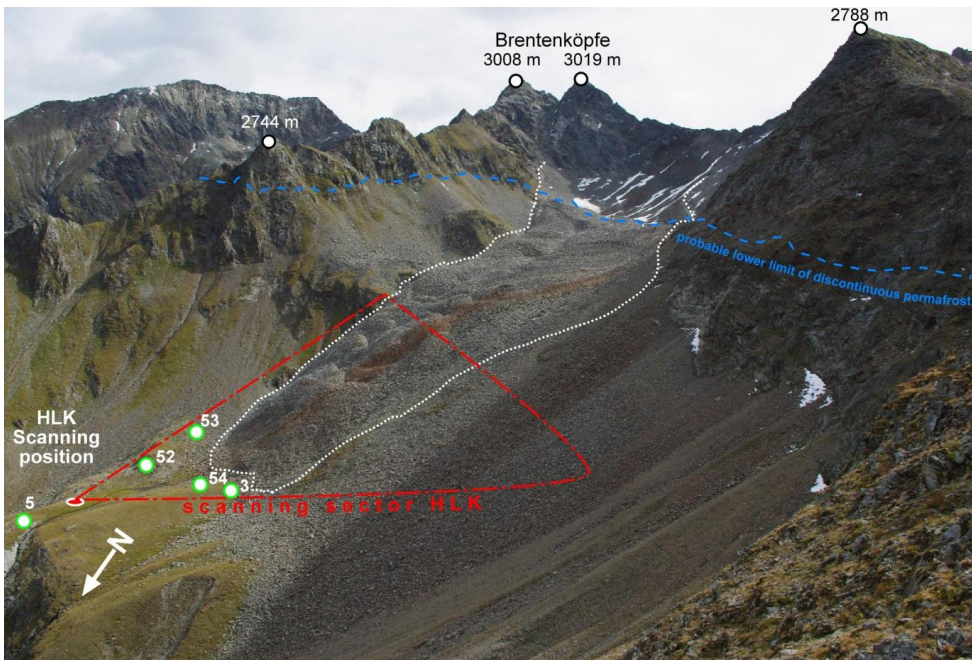
Inserted Cells

### 3.14.1 The rock glacier Hinteres Langtalkar, Austria

The rock glacier Hinteres Langtalkar (N, ~~E~~~~N~~46° 59', E12° 47') is located in the Schober Mountains ~~in~~ at an elevation between 2455 - 2720 m a.s.l. and ~~shows a geometry of c-~~is ~900 m in length as well as c-~~long and~~ ~350 m in width. Using TLS the rock glacier has been monitored since the year 2000 (Bauer et al., 2003). Extraordinary changes in surface elevation were detected around 2000 (Kaufmann and Ladstädter, 2002, Avian et al. 2005), leading to the assumption of acceleration most likely in 1994 (Avian et al., 2005). In order to geometrically quantify these surface elevation changes, a geodetic network was established in 1998 which has been surveyed since annually (Kienast and Kaufmann, 2004). The rock glacier itself shows distinct patterns of surface elevation changes and ~~hence~~ surface displacements ~~and can therefore be categorised into~~. In addition, the rock glacier has reported to have a slower upper part and a rapidly moving lower part with maximum horizontal displacements of up to 2.5 m per year (Avian et al., 2009). The mean horizontal surface displacement rates vary between 0.10 – 0.18 m per year while maximum changes amount up to 3.6 m per year (Kaufmann and Ladstädter, 2009). Delaloye et al. (2008) estimate this rock glacier to be one of the currently fastest moving one in Europe which underlines its importance for the scientific community.

Despite the multiple use of TLS for monitoring geomorphological processes (~~ep-~~ see Oppikofer et al. (2008)), TLS was rarely used for analysis of periglacial effects such as rock glacier movement patterns until the end of the last decade. First annual TLS observations were undertaken by Avian et al. (2005, 2009), or Bodin et al., (2008). Data acquisition was carried out from one of two known scanning positions (HLK, 2454-709 m a.s.l. on the left in Figure 3). The lowest and largest ground sampling distance (GSD) for the 2011 campaign summed up to 6.6 cm respectively 41.8 cm while the according measures for the survey of 2013 are 4.8 cm and 33.1 cm (~~Tab.1~~), see Table 1. These GSD values were computed based on

the closest and furthest distance between scanner and scene. In Figure 3 all applied registration reference points are highlighted by white circles, the scanner position by a red circle ellipse with a white edge. These reference points were surveyed by geodetic means and are hence known in a superior coordinate system. It can notably be seen that the distribution is rather unfavourable from a geodetic point of view as the active zone of the glacier, that is highlighted by a white dashed line, is not surrounded by registration reference points. This may lead to extrapolative respectively leverage effects. In order to provide trustable reference transformation parameters a surface based registration has been conducted after deformed regions were manually excluded. The scanning sector is marked by red dashed lines. The shown picture was taken in 2012.

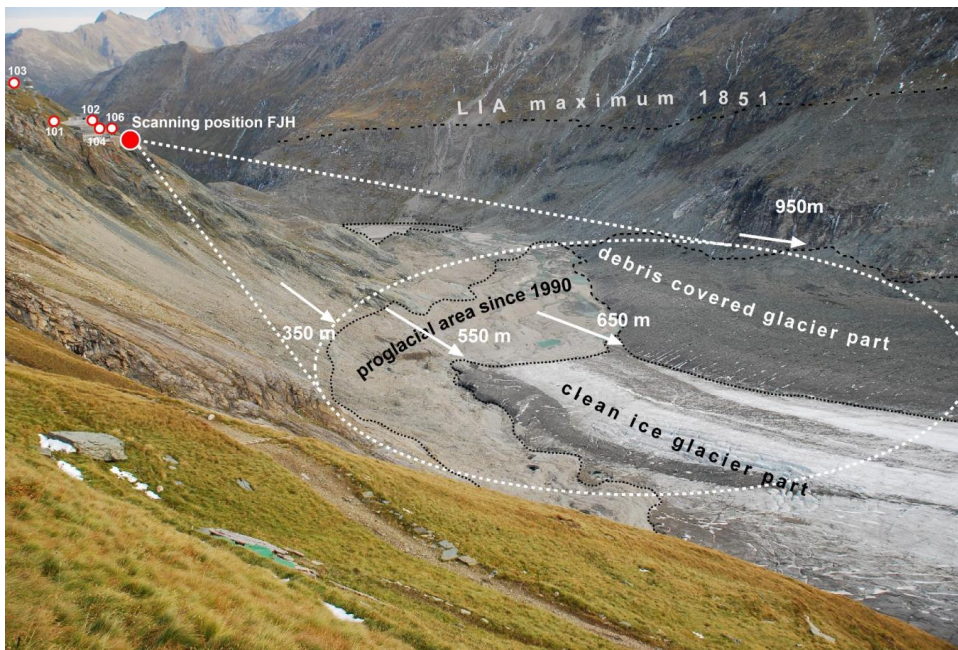


10 Figure 3: Scanner configuration at Hinteres Langtalkar rock glacier. The scanning position HLK is indicated by a red circle ellipse with a white edge, the rock glacier outline by a white dashed line. White circles with green edges highlight registration reference points (image, 28.08.2012).

### 3.24.2 The Pasterze glacier, Austria

15 The Pasterze glacier (N 47°\_04', E 12°\_44') is located in the Hohe Tauern range in the Central-central part Alps of the Austrian Alps. The geometric behaviour of this glacier is of scientific interest since 1878 (Wakonigg and & Lieb, 1996),

which makes Pasterze glacier to one of the longest documented glaciers in the world. The glacier reached its latest maximum around 1852/56 ~~(in the Little Ice Age, exact date not known,~~ (Nicolussi and Patzelt, 2000) with a maximum area of 26.5 km<sup>2</sup>. Since then the glacier constantly lost substance leading to a recent area of ~~appr-approximately~~ 17.3 km<sup>2</sup> in 2009 (Kaufmann et al., 2015). Accordingly since the end of the Little Ice Age period Pasterze glacier lost approximately 35% of its area and about 60% of its volume. The current retreat of the terminus area of Pasterze glacier has been observed using TLS ~~has been carried out~~ since 2001 covering an area of ~~appr-approximately~~ 0.9 km<sup>2</sup>. On average the annual elevation change within the debris covered part sums up to approximately 3.7 m while 6.3 m ~~were~~vertical loss was detected in the clean ice section between 2011 and 2012. A comprehensive view on the geomorphic consequences of the fast glacier retreat can be found in Avian et al. (2017). The scanning configuration at the Pasterze Glacier terminus area ~~can be seen is depicted~~ in Figure 4- while the picture was taken in 2008.



**Figure 4: Scanning configuration at Pasterze Glacier terminus area from the scanning position Franz-Josefs-Höhe (FJH). Dots near the scanning position represent the location of the reference points. Numbers near the arrows indicate the distance from the scanning position. (Image 18.09.2008).**

The view at scanning position Franz Josefs Höhe (FJH, 2362-621 m a.s.l.) is excellent for geomorphic applications whereas the availability of stable areas lead to an unfavourable distribution of reference points that do not surround the ROI. As a consequence the computed transformation parameters based on the reference points can only be seen as an approximate



solution as they ~~are can~~ very likely ~~to be subject of cause~~ extrapolative effects and hence have ~~to be been~~ refined by ~~e.g.~~ surface based registration. The necessity of revealing deformed regions prior to performing co-registration has already been extensively stated so that the ICPprox-algorithm is deployed in the following to solve this task for a comparison among the datasets from 2010 and 2012. A summary of quality parameters of TLS measurements at Pasterze Glacier terminus area is given in Avian et al. (2017).

### ~~3.3.3~~ **The Mittlerer Burgstall rock fall area, Austria**

The rock fall area Burgstall comprises the two former nunatak mountains ([Kellerer-Pirklbauer et al. 2012](#)) of Mittlerer and Hoher Burgstall which were encompassed from Pasterze glacier until the beginning of the ~~20-20<sup>th</sup>~~ century. The Mittlerer Burgstall (N 47° ~~06' and 06'~~ and E 12° ~~42' 42'~~; 2933 m a.s.l.) shows a distinct NW-SE trending ridge forming two rock faces which were exposed by glacier shrinkage in the last 100 years. In early summer 2007 a large rock fall at the top of ridge released ~~e. 430.000~~approximately 430000 m<sup>3</sup> (V. Kaufmann, Graz University of Technology, personal ~~comment communication~~) from a detachment area of ~~e. approximately~~ 3100 m<sup>2</sup> transporting debris to both sides of the ridge. Results from permafrost distribution modelling and ground temperature monitoring indicate (Kellerer-Pirklbauer et al., 2012) that the detachment area is located within or near the lower limit of permafrost. Consequently in 2010 a geodetic network consisting of one main scanning position (BUG, 2794.958 m a.s.l.) and six reference points was established. From every reference point each point can be viewed so that several scanning positions can be chosen to vary scanning geometry. The scanning configuration at scanning position Burgstall (BUG) can be seen in Figure 5. Yet again, the sampling of reference points has to be rated as unfavourable. Hence, initial transformation parameters have been computed based on the reference points. Afterwards, deformed regions were manually excluded while the remaining points were used to refine the relative alignment between points clouds based on the ICP.

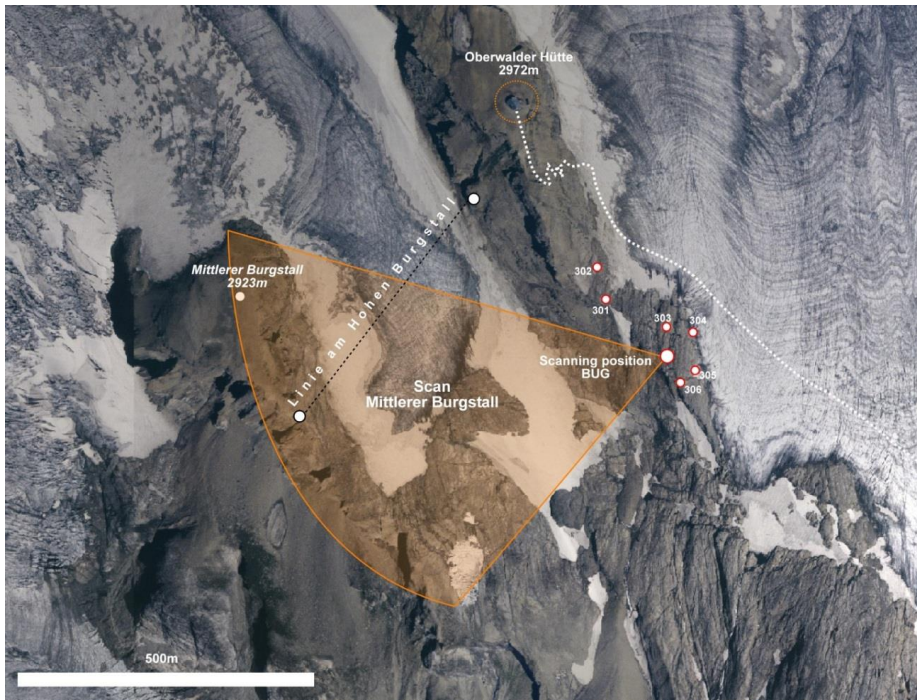


Figure 5: Configuration at scanning position Burgstall (“Standpunkt BUG”). BUG is serving two objects, Mittlerer Burgstall and Hoher Burgstall rock fall area. Codes: 301 – 306: reference points; “Linie am Hohen Burgstall” cross section of traditional glacier surveying. Ortho image [from 1998, Nationalpark Hohe Tauern 1998 \(© 2006\)©.](#)

Formatted: Left

## 45 Results

Every algorithm is sensitive to chosen settings as well as to the individual characteristics of the given data. In this section the three aforementioned regions of interest have been analysed by [using](#) the ICProx-algorithm. The input for the ICProx-algorithm consisted of two unreferenced point clouds per ROI given in different local scanner coordinate systems. Pre-alignment of the epochs was carried out by the 4-PCS-algorithm while subsequently the ICProx-algorithm was deployed in order to reveal regions that were subject of deformation. The inherent challenges of the datasets presented in section 0 and 4.2 can be associated to their sheer extent. A somewhat different degree of difficulty can be assigned to the ROI that was subject of section 4.3. This scene is demanding due to the scattered distribution of deformation and the comparably small magnitude of geometric changes as a consequence of processes after a huge rock fall.

Since the task of the ICProx-algorithm is essentially a classification problem – identify stable or deformed regions within a point cloud – the generated outcome can be numerically evaluated in form of confusion matrices while a visual inspection is carried out by so-called confusion maps. The reference data for the evaluation process is established by point clouds where deformed areas were manually removed, ~~while the relative alignment of the remaining points was refined by surface based registration~~. Based on this data a point cloud was tinted in two colours representing the two classes of interest, namely deformation and stable region. The comparison between reference and the results computed by the ICProx-algorithm finally yields in a confusion matrix respectively confusion maps as depicted for instance on the left of Figure 6. ~~The~~Therefore the following colour scheme will be used ~~throughout this contribution~~ and contains four elements, namely:

- Blue: Area is stable, detected as stable (true positive).
- Cyan: Area is stable, detected as unstable (false negative).
- Red: Area is unstable, detected as stable (false positive).
- Orange: Area is unstable, detected as unstable (true negative).

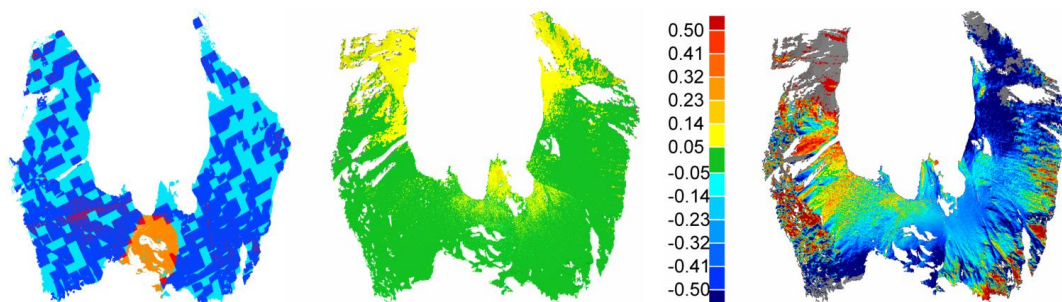
Note that a perfect result would only contain the first and last colour in the list. Yet, this aim is not achievable due to the applied octree structure. ~~In the following datasets captured at the sites described in section 3 were processed by using a prototypical implementation of the ICProx algorithm that was integrated into the software Final Surface (GFaI 2017).~~

#### **4.15.1 Rock glacier Hinteres Langtalkar**

After pre-alignment the entire dataset was ~~segmented~~decomposed into octree cells of 30 m so that in total 661 cells emerged. In order to locally determine transformation parameters candidates were sampled with 0.75 m on average. After congruence analysis, the largest subset contains 441 cells that were considered as being stable. Based on these areas an ICP-based registration was carried out leading to average residuals of 15.3 cm between the two point clouds. Afterwards the computed results were compared to the reference yielding in a confusion matrix as well as a colour coded confusion map which is depicted in Figure 6. The left part of Figure 6 shows octree cells where orange represents the rock glacier and red cells are considered as being stable. This effect occurred predominately in the transition region between glacier tongue and surrounding areas. The reason why these cells have been falsely assigned to the stable class can be found in the very low magnitude of deformation in the transition zone of the rock glacier which has a similar scale as the uncertainty measures (ISO 2008). As a consequence, deformations of this size fall below the margin of detectability. The narrow red band on the left side of the scene was falsely assigned as being stable due to its limited spatial expansion.

The remaining parts of Figure 6 show ~~inspection~~change maps based on comparisons between the ~~georeferenced~~reference dataset and their according versions which were altered in position and orientation ~~after~~before application of the ICProx (centre) and ICP (right). Hence, the motivation for conducting this analysis is to reveal differences between the two surface based approaches against ~~target based geo-referencing the reference data~~. A look at the centre part of Figure 6 shows that the

majority of the scene complies within +/- 5 cm while some parts feature deviations between 5 and 14 cm. These differences may be triggered by leverage effects due to an insufficient sampling of artificial targets for geo-referencing. This suspicion substantiates if one has a look at the centre part of Figure 3 where it can be seen that all targets do not surround the glacier tongue and are only located in north-westerly direction (above the glacier tongue in the figure). On average the differences between reference and the result computed based on the ICProx sum up to (i) 5.8 cm for points that are located above the reference surface and (ii) 4.5 cm for points below it while the standard deviation among the two datasets measures 5.7 cm. The right part of the figure again confirms that the ICP is not an appropriate algorithm for registration of point clouds that were subject of deformation. Again the same statistical measures were computed as before where the mean deviation among the datasets sum up to 17.4 cm for points above the reference respectively 23.9 cm for points below the reference surface. The according standard deviation of all residuals is 24.2 cm. It has to be mentioned that the listed statistical measures are somewhat whitewashed due to the fact that only deviations within the specified range between +/- 50 cm were considered but not the grey coloured areas where the discrepancies exceed these limits.



15 | **Figure 6: Colour coded confusion map (left), inspection change map in metres[m] based on a comparison to the georeferenced reference data outcome by usage of the ICProx (centre) and the ICP (right) at Hinterer Langtalkar rock glacier.**

The numerical assessment of the generated results is depicted given in Table 2 and reveals that a comparably large part of stable areas was not correctly assigned as indicated by the numbers in the cyan coloured cell. The reason for this can be found in the weak geometric characteristics in the according octree cells. The overall classification accuracy sums up to a moderate 60% = 55% + 5% and can mostly be justified by the aforementioned geometric characteristics of the dataset. For the detection rate of stable areas a value of 60% = 55% / (55% + 37%) was achieved. This result can be rated in two ways. On the one hand it can be seen as a satisfactory result while on the other hand a substantial amount of valid information was not used. The corresponding detection rate of deformation is 62.5% = 5% / (5% + 3%). After analysing the numbers of in Table 2 it appears that the allegedly “simple” dataset with only 8% of deformation has turned into a challenging task for the algorithm. However, a second look at Figure 6 reveals that the stable areas surround the major area of deformation. Hence, a stable set of transformation parameters can be expected without extrapolative effects. The influence of 3% of false positive

cells can be expected to be little due to the fact that the magnitude of deformation is comparably low in these parts and due to the low ratio between true positive (55%) and false positive (3%) areas.

**Table 2: Confusion matrix for the segmentationclassification of the rock glacier**

	Area is stable	Deformation
Classification: Area is stable	55%	3%
Classification: Deformation	37%	5%

Formatted: Left

5 The inspectionchange map based on the results of the ICProx-algorithm is illustrated on the left of Figure 7 and describes the basis for deformation analysis by Geologists. In the right half of the figure the uncertainty values computed by the ICProx-algorithm for individual octree cells (Wujanž et al. 2016b) can be seen that form the statistic basis to distinguish stable areas and deformation. Hence, small uncertainty values allow detecting deformations of small magnitude. It is obvious that the distribution of uncertainty values is quite heterogeneous ranging from several centimetres to several decimetres. It can also be seen that the upper parts of the rock glacier have larger uncertainties. This can be explained by the fact, that the local sampling rate is lower compared to the regions right below. The uncertainty values on the glacier tongue are also notably increased when compared to its surroundings. This is caused by the unsteady geometric characteristics of the glacier tongue in combination to the scanning configuration, as depicted in Figure 3.

10

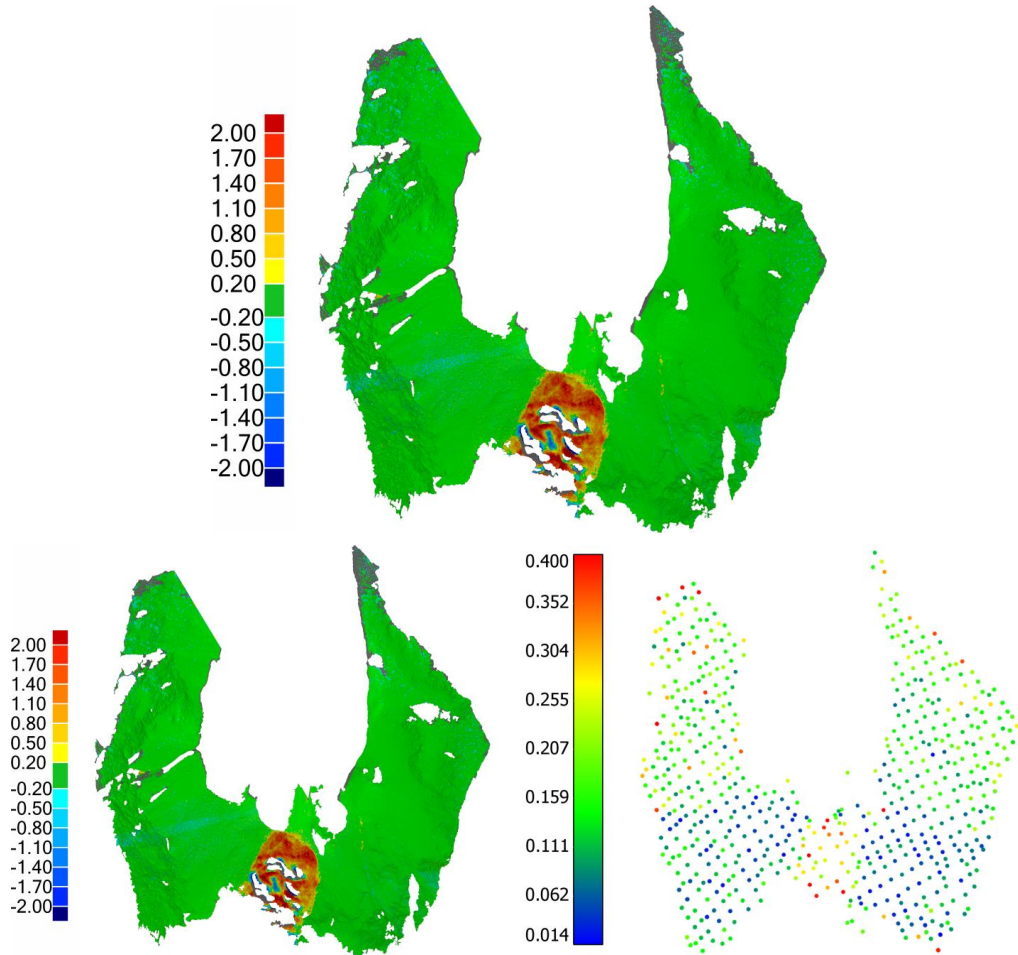


Figure 7: InspectionChange map in metres[m] of the Hinterer Langtalkar rock glacier based on the ICProx (left) and spatial uncertainties [m] for individual octree cells (right).

Formatted: Left

5

#### 4.25.2 Pasterze glacier terminus area

For this ROI it can be expected that deformation occurred predominantly directly at the glacier's tongue so that comparatively large octree cells were defined. Hence, the size of the cells was empirically set to 52.5 m leading to 923 segments. On average candidates were sampled every 6 m which lead to approximately 40700 candidates. After application

of the algorithm a congruent set consisting of 526 octree cells emerged that was finally used to compute the transformation parameters for deformation monitoring. The residuals after registration based on stable regions were 28.8 cm on average. An explanation for this rather large quality measure can be found in the comparably low ground sampling distance in relation to the rugged terrain. Based on expert knowledge a set of reference transformation parameters was computed featuring  
5 undoubtedly stable areas. This procedure is very time consuming, yet crucial in order to avoid falsification of the reference dataset by deformation.

After generating the aforementioned reference dataset, quality assessment was carried out. Figure 8 depicts the confusion map on the left which was coloured according to the colour scheme proposed at the beginning of [this section 2.2](#). In the  
10 centre of the left part the glacier tongue is highlighted in orange ~~that caused~~[corresponding to](#) large [detected](#) geometric changes. On the sides stable areas can be found which have been predominantly detected by the algorithm. Cyan coloured areas can be seen predominantly on the left of the tongue. These regions have not been detected as being stable due to the fact that their local geometric characteristics did not feature notable topographic changes. Consequently the locally applied ICP converged into local minima, as the ICP requires a certain geometric contrast within the datasets. Red areas however  
15 have to be rated as being critical for the desired results. These regions can be found primarily in transition areas between glacier terminus and adjacent stable parts of the point cloud. The reason why these areas were falsely classified can be explained by their magnitude of deformation – they fall below the margin of detectability. Single red spots in the otherwise stable flanks left and right of the tongue may were triggered by single sliding or mass wasting processes (Avian et al., 2017). These appearances also fall below the margin of detectability, yet not due to their magnitudes but their limited spatial extent.  
20 [On the right of the figure spatial uncertainty measures \[m\] for each octree cell are shown which have been computed by the ICProx-algorithm. A heterogeneous distribution is apparent while an increasing characteristic can be seen towards the lower part of the image due to insufficient local sampling.](#)

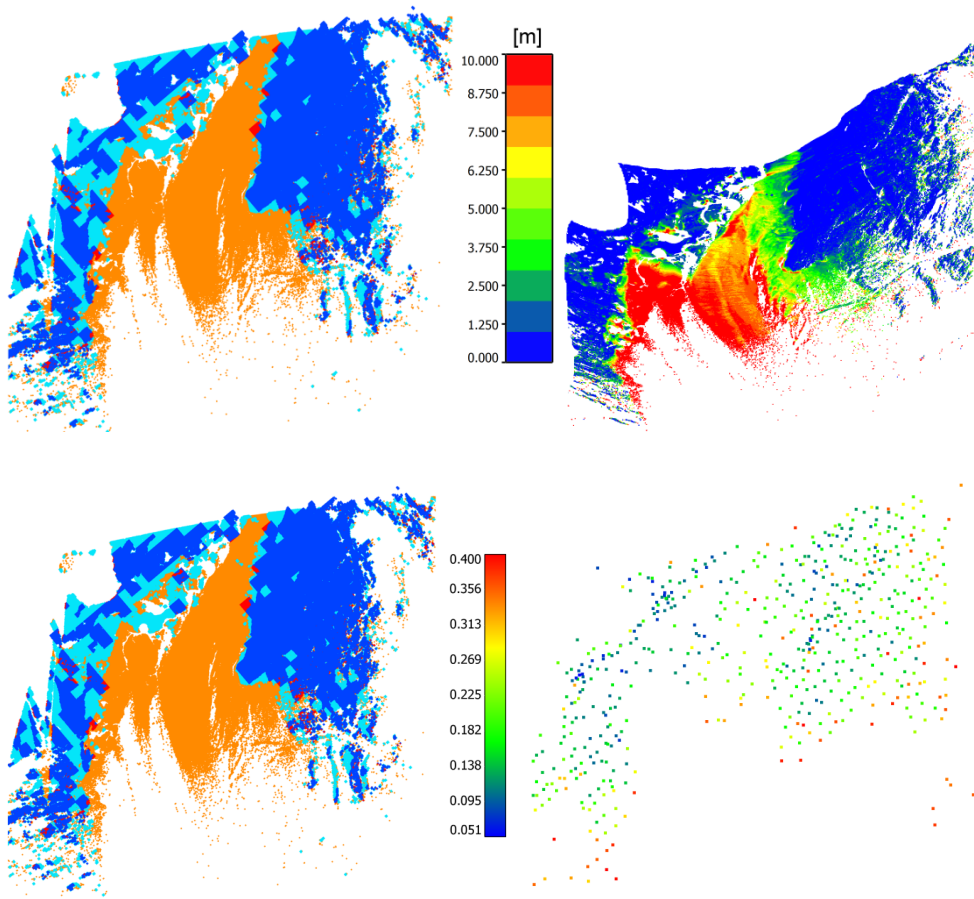


Figure 8: Confusion map based on the segmentation with the ICProx (left) and resulting inspection maps spatial uncertainties [m] for individual octree cells (right).

The right part of Figure 8 features a point cloud that is coloured according to geometrical differences that occurred in between epochs. Large differences are notably visible at the glacier terminus area. Two regions need to be highlighted in particular. At first the orange to red coloured part has to be brought to attention – vertical surface elevation changes in the magnitude of 6.5 to 10 m/a. In this part of the glacier the terminus area is only sparsely covered by debris. The second notable part is coloured in shades of yellow to green where the glacier tongue is covered by morainic debris. As a consequence the ablation rates are significantly lower compared to the clean ice part with vertical surface elevation changes in the magnitude of 4 to 6 m/a (Kellerer-Pirklbauer et al. 2008).

Formatted: English (U.S.)



The numerical interpretation of the results can be found in

Table 3. In total 19% of the dataset were falsely classified as deformation despite the fact that they actually remained geometrically stable. This effect does not provoke any substantial disadvantages, yet does simply mean that stable areas remain unused for the final registration. The portion of the critically false positive class, which is coloured in red in all tables and figures, sums up to 2%. These regions have undeniably an influence onto the registration yet can be rated as uncritical due to their comparably low magnitudes and low fraction in relation to the stable areas.

Table 3: Confusion matrix for the segmentation classification of the ice glacier

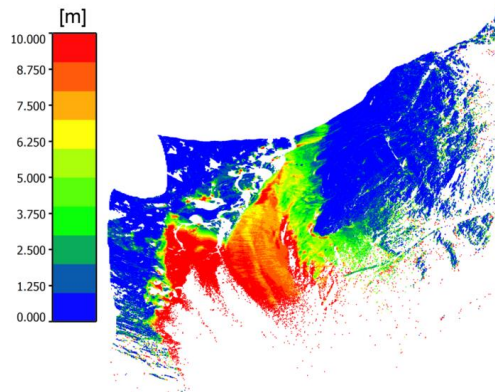
	Area is stable	Deformation
Classification: Area is stable	43%	2%
Classification: Deformation	19%	36%

All in all the classification has to be rated quite positively with an overall accuracy of  $79\% = 43\% + 36\%$ . The detection rate for stable areas sums up to  $69\% = 43\% / (43\% + 19\%)$ , the one for deformation is even  $95\% = 36\% / (36\% + 2\%)$ . Consequently the algorithm can be characterised as being “careful” – in case of doubt areas are rather classified as being deformed.

Figure 9 features a point cloud that is coloured according to geometrical differences that occurred in between epochs. Large differences are notably visible at the glacier terminus area. Two regions need to be highlighted in particular. At first the orange to red coloured part has to be brought to attention vertical surface elevation changes in the magnitude of -6.5 to -10 m/a. In this part of the glacier the terminus area is only sparsely covered by debris. The second notable part is coloured in shades of yellow to green where the glacier tongue is covered by morainic debris. As a consequence the ablation rates are significantly lower compared to the clean ice part with vertical surface elevation changes in the magnitude of -4 to -6 m/a (Kellerer-Pirklbauer et al. 2008).

Formatted: Left

Formatted: English (U.K.)



**Figure 9: Resulting change map [m] based on the detected stable regions.**

#### 4.35.3 Mittlerer Burgstall rock fall area

5 Just as before the input for the ICProx-algorithm consisted of two unreferenced point clouds, given in different local scanner coordinate systems. In order to decompose the datasets, an octree size of 5 m in all cardinal directions was chosen yielding in 3494 cells. Candidates were sampled with an average spacing of 0.5 m so that about 120000 correspondences had to be iteratively found by the ICP. After application of the ICProx-algorithm a congruent set of 2179 cells arose that was deployed to compute the desired transformation parameters for deformation monitoring. The residuals after registration based on

10 stable regions were 17.2 cm on average. Again the explanation for this rather large quality measure can be found in the comparably low ground sampling distance in relation to the rugged terrain. As before expert knowledge was used to create a set of reference transformation parameters by manually selecting undoubtedly stable areas. Based on this information a binary inspectionchange map with the two classes stable area and deformation was created. This data served as a basis for the confusion map that is depicted in on the left of Figure 10. In contrast to the two previously shown examples, several red

15 areas are notable in which deformed regions were falsely classified as being stable. A close look at the red speckles which are located in the major rock fall area highlighted in orange, shows that most of them contain some locally restricted blue regions. As a result, a mixture between stable and predominantly deformed areas occurs within the corresponding octree cells and hence lowers the algorithm's margin of detectability. The reverse case can be seen on the right of the figure that is mostly tinted in blue where small red spots are notable. Another reason for the comparably frequent occurrence of red

20 regions is the low magnitude of deformations. The right part of the figure shows spatial uncertainties for individual octree cells given in metres. A heterogeneous distribution of uncertainty values is apparent yet its variation appears to be weaker when compared to the other two examples. Note that the spatial uncertainties in large parts of the deformed region fall into the decimetre range.

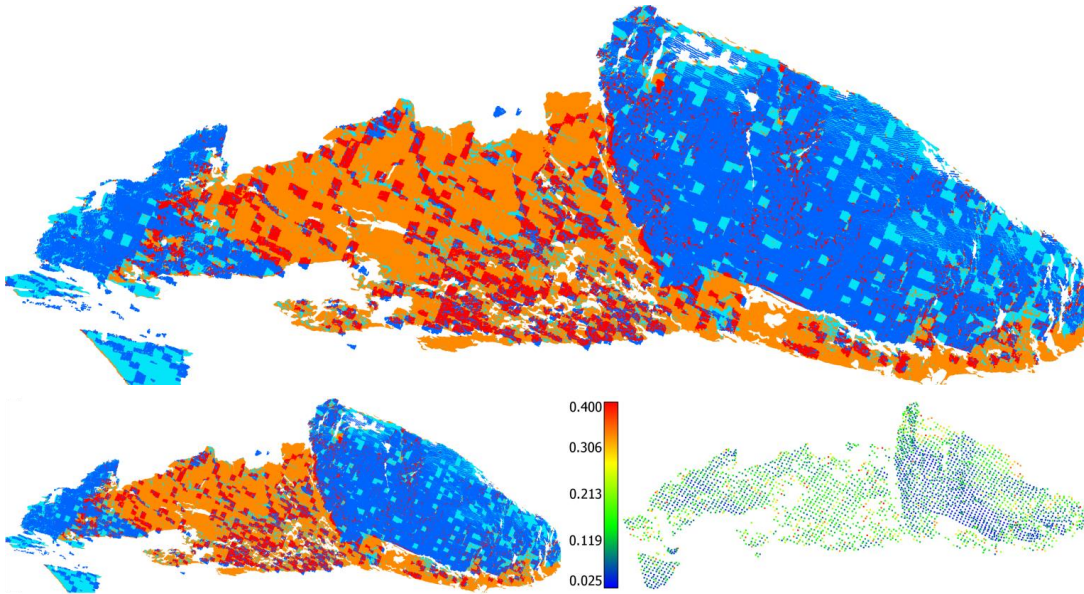


Figure 10: Confusion map of the Burgstall dataset based on the segmentation classification with the ICProx at Mittlerer Burgstall rock fall area, (left) and spatial uncertainties [m] for individual octree cells (right).

5

The numerical assessment of the generated results is depicted given in Table 4 and shows that a comparably large part of deformed areas was not correctly assigned as indicated by the numbers in the red coloured cell. The reason for this is twofold and can be both found both in the ratio among the low magnitude of deformation and the corresponding local spatial uncertainties as well as the heterogeneous occurrence of geometric changes. The overall classification accuracy sums up to 72% = 43% + 29%. For the detection rate of stable regions a value of 74% = 43% / (43% + 15%) was achieved that marks the best value in this contribution. However, the corresponding detection rate of deformation only sums up to 69% = 29% / (29% + 13%).

10

Table 4: Confusion matrix for the segmentation classification of the rock fall area

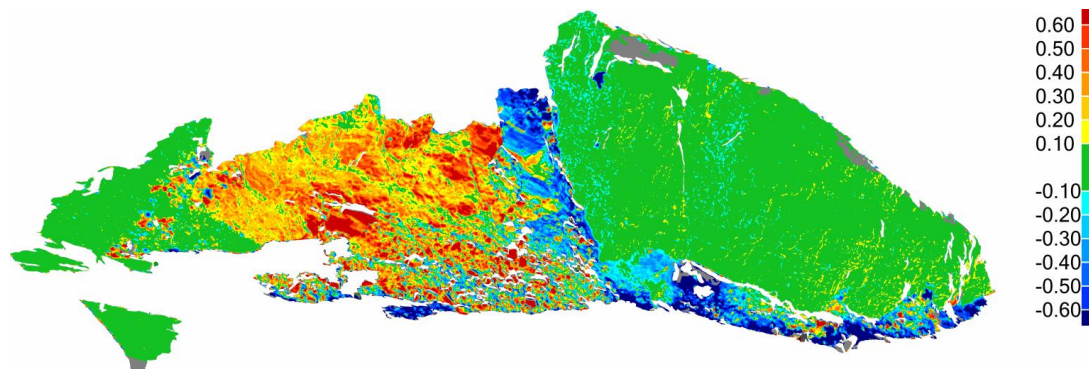
	Area is stable	Deformation
Classification: Area is stable	43%	13%
Classification: Deformation	15%	29%

15

Based on the reference transformation parameters an inspection a change map was generated that is depicted in Figure 11. Note that the chosen unit is metres. The majority of geometric changes occurred in the centre of the figure as well as on the

Formatted: Left

bottom of the right part. Apart from larger connected regions, local nests of rock fall can be seen especially on the upper right part of the illustration.



5 | **Figure 11: InspectionChange map in metres based on the detected stable regions – comparison between the datasets from 2014 and 2015.**

A look at Table 4 shows that 13% of all points were assigned to the false positive class. Hence, its influence onto the outcome is of interest in the following. Therefore the computed set of transformation parameters based on the detected stable regions was applied to the second epoch and compared to the generated reference dataset. On average the absolute deviation between reference and computed result is 7.37 cm. The corresponding inspectionchange map in Figure 12 illustrates the differences in metres. In summary the processed dataset proved to be challenging and revealed boundaries for the ICProx-  
10 | algorithm. Apart from magnitude and spatial distribution of deformation, the inherent relationship between detectability of geometric changes and local point density had a critical influence onto the outcome, that finally lead to the comparably large amount of falsely classified stable regions. Thus, future surveys in this region should be carried out at higher spatial sampling rates.

15

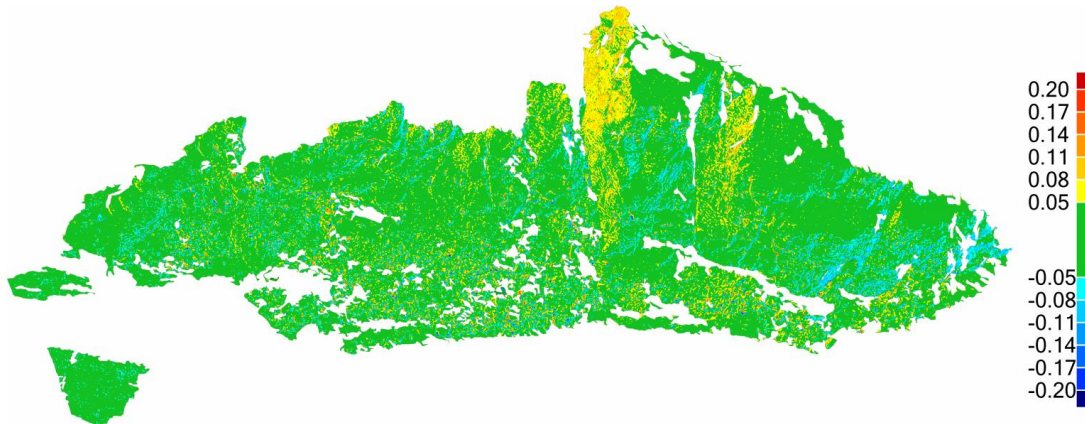


Figure 12: Comparison in metres between reference dataset and results generated based on the ICProx-algorithm.

## 56 Summary and outlook

In this contribution an algorithm, termed the iterative closest proximity-algorithm (ICProx) was used to automatically identify and finally ~~reject~~exclude deformation from point clouds captured at different points in time. If this diagnostic step is not performed, systematic falsification of the registration is inevitable and consequently wrong conclusions are drawn during analysis of the deformation pattern or computation of geomorphometric measures. Based on the detected stable regions transformation parameters were computed as a vital prerequisite for deformation monitoring. The chosen study areas featured a glacier, a rock glacier, as well as a rockfall area. The datasets ~~is self~~themselves proved to be demanding due to individual geometric characteristics, extent, relative amount and ~~or~~ magnitude of deformations. In general, the algorithm performed well for the data presented in sections 0 and 4.2 where geometric changes occurred in a connected fashion. The most challenging task was represented by the data discussed in section 4.3 due to the fact that deformation was scattered all over the datasets and that the deformation rates were comparably low in comparison to the local uncertainty values. All results were numerically and visually evaluated against reference datasets. The mean classification accuracy for stable regions is 68% ~~with a standard deviation of 7.1%~~, while the corresponding measure for deformation is 76% ~~with a standard deviation of 17.2%~~. Thus, the results can be rated as quite promising. However, the importance of carefully acquiring data is particularly apparent in section 5.3 as it clearly demonstrates the inherent link between local sampling density and potential detectability of deformation. It is important to point out that the effects provoked by the sampling uncertainty of TLS notably surpass their capabilities in terms of achievable 3D-precision.

Further research will focus on improving some existing disadvantages of the algorithm as well as the applied assessment procedure. One of them is the dependency of the outcome to the degree of decomposition of the point clouds by usage of an

octree structure. Hence, an extension has to be implemented that is capable to determine an optimal octree size under consideration of the local topography. This information could also be used to dismiss certain octree cells due to insufficient geometric properties that would otherwise occur in the algorithm's numerical and visual assessment. In addition, stable cells that border on deformed regions should be split and dismissed from the registration in order to avoid falsification in such transition zones as illustrated in Figure 6 and Figure 8. An alternative strategy could be to apply the ICPprox-algorithm in an iterative fashion where the octree size gradually decreases. By this, the boundaries of deformed regions would be detected at a higher resolution. Since geomorphometric monitoring is usually carried out frequently over long periods, strategies have to be developed in order to process time series that consist of several epochs.

## 67 References

- 10 Adams, M., Gleirscher, E. and Gigele, T.: *Automated Terrestrial Laser Scanner measurements of small-scale snow avalanches*. Proc. Intern. Snow Science Workshop Grenoble-Chamonix MontBlanc, 2013.
- Aiger, D., Mitra, N. J. and Cohen-Or, D.: *4-points congruent sets for robust pairwise surface registration*. Transactions on Graphics, 27(3): Article 85, 2008.
- Al-Manasir, K. and Lichti, D.: *Self-Calibration of a Leica HDS7000 Scanner*. Proc., FIG Working Week, International Federation of Surveyors, Copenhagen, Denmark, 2015.
- 15 Anderson, J. and Bausch, C.: *Climate Change and Natural Disasters: Scientific evidence of a possible relation between recent natural disasters and climate change*. Requested study on behalf of the European Parliament's Environment, Public Health and Food Safety Committee, 2006.
- Avian, M., Lieb, G.K. and Kaufmann, V.: *Recent and Holocene dynamics of a rock glacier system – the example of Langtalar (Central Alps, Austria)*. Norsk Geografisk Tidsskrift - Norwegian Journal of Geography Vol. 59, Oslo, pp. 1-8, 2005.
- 20 Avian, M., Kellerer-Pirklbauer, A. and Bauer, A.: *LiDAR for monitoring mass movements in permafrost environments at the cirque Hinteres Langtal, Austria, between 2000 and 2008*. Natural Hazards and Earth System Sciences, 9(4), pp. 1087-1094, 2009.
- 25 Avian M., Kellerer-Pirklbauer A. and Lieb G.K.: *Geomorphic consequences of rapid deglaciation at Pasterze Glacier, Hohe Tauern Range, Austria, between 2010 and 2013 based on repeated terrestrial laser scanning data*. Accepted for publication in Geomorphology. 2017.
- Bechtold, S. and Höfle, B.: *HELIOS: A multi-purpose Lidar simulation framework for research, planning and training of laser scanning operations with airborne, ground-based mobile and stationary platforms*. ISPRS Annals of Photogrammetry, Remote Sensing and Spatial Information Sciences, pp. 161-168, 2016.
- 30

- Besl, P. J. and McKay, N. D.: *Method for registration of 3-D shapes*. Robotics-DL tentative, International Society for Optics and Photonics, pp. 586-606, 1992.
- Böhler, W., Vicent, M. B. and Marbs, A.: *Investigating laser scanner accuracy*. International Archives of Photogrammetry, Remote Sensing and Spatial Information Sciences, 34(Part 5), pp. 696-701, 2003.
- 5 Böhlm, J. and Becker, S.: Automatic marker-free registration of terrestrial laser scans using reflectance. Proceedings of 8<sup>th</sup> Conference on Optical 3D Measurement Techniques, Zurich, Schweiz, pp. 338-344, 2007.
- Bradley, R. S., Vuille, M., Diaz, H. F. and Vergara, W.: *Threats to water supplies in the tropical Andes*. Science, 312(5781), pp. 1755-1756, 2006.
- Cignoni, P., Rocchini, C. and Scopigno, R.: *Metro: measuring error on simplified surfaces*. In: Computer Graphics Forum  
10 Vol. 17, No. 2, pp. 167-174, 1998.
- [Cramer, M., Stallmann, D. and Haala, N.: Direct georeferencing using GPS/inertial exterior orientations for photogrammetric applications. International Archives of Photogrammetry and Remote Sensing, 33\(B3/1: PART 3\), pp. 98-205, 2000.](#)
- Delaloye, R., Perruchoud, E., Avian, M., Kaufmann, V., Bodin, X., Hausmann, H., Ikeda, A., Kääb, A., Kellerer-Pirklbauer,  
15 Krainer, K., Lambiel, C., Mihajlovic, D., Staub, B., Roer, I. and Thibert, E.: *Recent interannual variations of rock glacier creep in the European Alps*. In: Proceedings of the Ninth International Conference on Permafrost (NICOP), University of Alaska, United States of America, pp. 343-348, 2009.
- Fischler, M. A. and Bolles, R. C.: *Random sample consensus: a paradigm for model fitting with applications to image analysis and automated cartography*, Communications of the ACM, 24(6), 381–395, doi:10.1145/358669.358692, 1981.
- 20 GFaI: *Official website of the 3D-Software Final Surface*. <http://www.final-surface.com> (accessed 17.05.2017), 2017.
- Gielsdorf, F., Gründig, L. and Milev, I.: *Deformation analysis with 3D laser scanning*. In: Proceedings of the 13th FIG Symposium, 2008.
- Girardeau-Montaut, D., Roux, M., Marc, R. and Thibault, G.: *Change detection on points cloud data acquired with a ground laser scanner*. International Archives of Photogrammetry, Remote Sensing and Spatial Information Sciences, 36(part 3),  
25 W19, 2005.
- Heunecke, O. and Welsch, W.: *Terminology and classification of deformation models in engineering surveys*. Journal of Geospatial Engineering, 2(1), pp. 35-44, 2000.
- [Höfle, B. and Pfeifer, N.: Correction of laser scanning intensity data: Data and model-driven approaches. ISPRS Journal of Photogrammetry and Remote Sensing, 62\(6\), pp. 415-433, 2007.](#)

- ISO: Evaluation of measurement data - Guide to the Expression of Uncertainty in Measurement. JCGM 100:2008(E). Joint Committee for Guides in Meterology (JCGM), 2008.
- Jaboyedoff, M., Oppikofer, T., Abellán, A., Derron, M. H., Loye, A., Metzger, R. and Pedrazzini, A.: *Use of LIDAR in landslide investigations: a review. Natural hazards*, 61(1), pp. 5-28, 2012.
- 5 Kaufmann, V. and Ladstädter, R.: *Monitoring of active rock glaciers by means of digital photogrammetry*. Proceedings of the ISPRS Commission III Symposium "Photogrammetric Computer Vision", September 9-13, Graz, Austria, IAPRS, Vol. 34, Part 3B, pp. 108-111, 2002.
- Kaufmann, V. and Ladstädter, R.: *Documentation and visualization of the morphodynamics of Hinteres Langtalkar rock glacier (Hohe Tauern Range, Austrian Alps) based on aerial photographs (1954-2006) and geodetic measurements (1999-*  
10 *2007)*. Proceedings of the 10<sup>th</sup> International Symposium on High Mountain Remote Sensing Cartography, Kathmandu, Nepal, 2009.
- Kaufmann, V., Kellerer-Pirklbauer, A., Lieb, G. K., Slupetzky, H. and Avian, M.: *Glaciological Studies at Pasterze Glacier (Austria) Based on Aerial Photographs*. Monitoring and Modeling of Global Changes, Springer Netherlands, pp. 173-198, 2015.
- 15 Kellerer-Pirklbauer, A., Lieb, G.K., Avian, M. and Gspurning, J.: *The response of partially debris-covered valley glaciers to climate change: The example of the Pasterze Glacier (Austria) in the period 1964 to 2006*. Geografiska Annaler 90 (4), pp. 269 – 285, 2008.
- 20 [Kellerer-Pirklbauer, A., Lieb, G. K., Avian, M. and Carrivick, J.: Climate change and rock fall events in high mountain areas: Numerous and extensive rock falls in 2007 at Mittlerer Burgstall, Central Austria. Geografiska Annaler: Series A, Physical Geography, 94\(1\), pp. 59-78, 2012.](#)
- Kienast, G. and Kaufmann, V.: *Geodetic measurements on glaciers and rock glaciers in the Hohe Tauern National park (Austria)*. Proceedings of the 4<sup>th</sup> ICA Mountain Cartography Workshop, Vall de Núria, Catalonia, Barcelona, Spain, pp. 101-108, 2004.
- Kromer, R., Abellan, A., Hutchinson, D., Lato, M., Chanut, M.-A., Dubois, L. and Michel Jaboyedoff: *Automated*  
25 *Terrestrial Laser Scanning with Near Real-Time Change Detection – Monitoring of the Séchilienne Landslide*. Earth Surf. Dynam. Discuss., doi:10.5194/esurf-2017-6, 2017.
- Lambrecht, A. and Kuhn, M.: *Glacier changes in the Austrian Alps during the last three decades, derived from the new Austrian glacier inventory*. Annals of Glaciology, 46(1), pp. 177-184, 2007.
- Lague, D., Brodu, N. and Leroux, J.: *Accurate 3D comparison of complex topography with terrestrial laser scanner:*  
30 *application to the Rangitikei canyon (NZ)*. ISPRS Journal of Photogrammetry and Remote Sensing, 82, pp. 10-26, 2013.



- Lichti, D. D. and Licht, M. G.: *Experiences with terrestrial laser scanner modelling and accuracy assessment*. Int. Arch. Photogramm. Remote Sens. Spat. Inf. Sci, 36(5), pp. 155-160, 2006.
- Lindenbergh, R. and Pietrzyk, P.: *Change detection and deformation analysis using static and mobile laser scanning*. Applied Geomatics, 7(2), pp. 65–74, 2015.
- 5 | [Lowe, D.: Object recognition from local scale-invariant features. Computer vision, 1999. The proceedings of the seventh IEEE international conference on, vol. 2, pp. 1150-1157. IEEE, 1999.](#)
- [Neitzel, F.: Identifizierung konsistenter Datengruppen am Beispiel der Kongruenzuntersuchung geodätischer Netze. German Geodetic Commission \(DGK\), Volume C, Nr. 565, Munich, Germany, 2004.](#)
- Neitzel, F.: *Investigations of axes errors of terrestrial laser scanners*. 5<sup>th</sup> International Symposium Turkish-German Joint  
10 | Geodetic Days, Berlin, Germany, 2006.
- Nicolussi, K. and Patzelt G.: *Discovery of early-Holocene wood and peat on the forefield of the Pasterze Glacier, Eastern Alps, Austria. The Holocene 10: 191-199, 2000.*
- Oppikofer, T., Jaboyedoff, M. and Keusen, H. R.: *Collapse at the eastern Eiger flank in the Swiss Alps*. Nature Geoscience, 1(8), pp. 531-535, 2008.
- 15 | Paffenholz, J. A., Alkhatib, H. and Kutterer, H.: *Direct geo-referencing of a static terrestrial laser scanner*. Journal of Applied Geodesy, 4(3), pp. 115-126, 2010.
- Previtali, M., Barazzetti, L., Brumana, R. and Scaioni, M. (2014): *Scan registration using planar features*. The International Archives of Photogrammetry, Remote Sensing and Spatial Information Sciences, 40(5), 501, 2014.
- 20 | [Riegl: Riegl VZ 1000 Data sheet. http://riegl.com/uploads/tx\\_pxpriegldownloads/DataSheet\\_VZ-1000\\_2015-03-24.pdf.](http://riegl.com/uploads/tx_pxpriegldownloads/DataSheet_VZ-1000_2015-03-24.pdf)  
Zugriff: 21.05.2017, 2017.
- Salo, P., Jokinen, O. and Kukko, A.: *On the calibration of the distance measuring component of a terrestrial laser scanner*. In Proc. in the XXI<sup>th</sup> ISPRS Congress, Silk Road for Information from Imagery (Vol. 37, p. B5), 2008.
- Samet, H.: *Foundations of Multidimensional and Metric Data Structures*. Kaufmann, San Francisco, California, USA. 1024 pages, 2006.
- 25 | Schwalbe, E., Maas, H. G., Dietrich, R., and Ewert, H.: *Glacier velocity determination from multi temporal terrestrial long range laser scanner point clouds*. The ISPRS Archives, 37, pp. 457-462, 2008.
- Soudarissanane, S.: *The geometry of terrestrial laser scanning; identification of errors, modeling and mitigation of scanning geometry*. Doctoral dissertation. Delft University of Technology, 2016.

Formatted: German (Germany)

Formatted: German (Germany)

technet: *Scantra - High-Precision Scan Registration without Targets*. <http://technet-gmbh.de/index.php?id=1051&L=1>, accessed 17.05.2017, 2017.

Tirado, M. C., Clarke, R., Jaykus, L. A., McQuatters-Gollop, A., and Frank, J. M.: *Climate change and food safety: A review*. Food Research International, 43(7), pp. 1745-1765, 2010.

- 5 van Veen, M., Hutchinson, D.J., Kromer, R., Lato, M. and Edwards, T: *Effects of Sampling Interval on the Frequency-Magnitude Relationship of Rockfalls Detected from Terrestrial Laser Scanning using Semi-Automated Methods*. Landslides, 2017.

Formatted: German (Germany)

Wakonigg, H. and Lieb, G.K.: *Die Pasterze und ihre Erforschung im Rahmen der 887 Gletschermessungen*. Wissenschaft im Nationalpark Hohe Tauern Kärnten – Kärntner 888 Nationalpark-Schriften 8, pp. 99–115, 1996.

- 10 Wujanz, D.: *Towards transparent quality measures in surface based registration processes: Effects of deformation onto commercial and scientific implementations*. Proceedings of the XXII Congress of the ISPRS, Melbourne, Australia, 2012.

Wujanz, D., Holst, C., Neitzel, F., Kuhlmann, H., Niemeier, W. and Schwieger, V.: *Survey configuration for terrestrial laser scanning*. Allgemeine Vermessungsnachrichten (AVN), 6(2016), pp. 158-169, 2016a.

Formatted: German (Germany)

- 15 Wujanz, D., Krueger, D. and Neitzel, F.: *Identification of Stable Areas in Unreferenced Laser Scans for Deformation Measurement*. The Photogrammetric Record, 31(155), pp. 261-280, 2016b.

Wujanz, D., Burger, M., Mettenleiter, M. and Neitzel, F: *An intensity-based stochastic model for terrestrial laser scanners*. ISPRS Journal of Photogrammetry and Remote Sensing, vol. 125, pp. 146-155, 2017.

Zoller + Fröhlich: *Data sheet. Z+F IMAGER 5010X*. [http://www.zf-laser.com/fileadmin/editor/Datenblaetter/-Z\\_F\\_IMAGER\\_5010X\\_System\\_Requirements\\_E\\_FINAL.pdf](http://www.zf-laser.com/fileadmin/editor/Datenblaetter/-Z_F_IMAGER_5010X_System_Requirements_E_FINAL.pdf). Zugriff: accessed 21.05.2017, 2017.

Formatted: German (Germany)

Formatted: German (Germany)

20