

**Author Response “Automated Terrestrial Laser Scanning with Near Real-Time Change Detection – Monitoring of the Séchilienne Landslide” by Ryan A. Kromer et al.**

Earth Surf. Dynam. Discuss., doi:10.5194/esurf-2017-6-RC1, 2017

**R. Salvini Referee #1**

Received and published: 19 March 2017

We appreciate the time and effort required to conduct this review and we would like to thank the review for providing valuable feedback. We have responded to each of the reviewer’s comments in red below and made changes in a marked changes version of the manuscript.

“It is a very interesting paper on an Automated Terrestrial Laser Scanning system with automatic near real-time change detection processing and I really appreciated it. The introduction provides sufficient background and includes most of the relevant and up- dated references. The research design is simple but very appropriate. Methods are well described and results clearly presented. All the conclusions are supported by data. The six-weeks period of acquisition, with data collected at 30 minute intervals, is effective and very innovative. The possibility to offer an alternative to GB-InSAR deformation monitoring has been clearly identified with high accuracy of results, full technical descriptions and completeness. The originality is high and the paper contents will probably represent an importance reference in the future of hyper- and super-temporal slope stability monitoring. The significance of content is high as well as the quality of presentation and the scientific soundness. The interest to the readers is also high. In general the figures are simple, quite clear, and properly cited and commented in the text.”

“The scale of representation of Figures 7, 8, and 9, been their main goal to show the spatial distribution of change detection results, is probably inadequate for geological/geomorphological interpretation.”

We have created new figures that facilitate geological interpretation. New Figure 8 has been enlarged. Figure 9 has been enlarged and includes more annotations. We have added a new Figure 10 which shows zoomed in areas of Figure 9.

“Additional remarks: - The detection of the flux of talus, displacement of the landslide and pre-failure deformation of discrete rockfall events are no clearly identified in the figures.”

We have added annotations to Figure 9 and 10 clearly indicating the identified slope processes.

“A geological and geomorphological map of the area could have been useful to better explain the characteristics of the area and the landslide. - Highlights are missing.”

We have added a DEM to figure one showing the geomorphology of the frontal zone of the landslide. This landslide is well studied. Detailed geological descriptions and maps are available in the cited works:

Vulliez, C.: Apports des méthodes d’imagerie 3D pour la caractérisation et le monitoring du glissement rocheux de Séchilienne (Vallée de la Romanche, Isère, France),pp 1–123. Lausanne, 12 February. 2016.

Le Roux, O., Jongmans, D., Kasperski, J., Schwartz, S., Potherat, P., Lebrouc, V., Lagabrielle, R. and Meric, O.: Deep geophysical investigation of the large Séchilienne landslide (Western Alps, France) and calibration with geological data, *Engineering Geology*, 120(1-4), 18–31, doi:10.1016/j.enggeo.2011.03.004, 2011.

Kasperski, J., Delacourt, C., Allemand, P., Potherat, P., Jaud, M. and Varrel, E.: Application of a Terrestrial Laser Scanner (TLS) to the Study of the Séchilienne Landslide (Isère, France), *Remote Sensing* 2011, Vol. 3, Pages 167-184, 2(12), 2785–2802, doi:10.3390/rs122785, 2010a.

Helmstetter, A. and Garambois, S.: Seismic monitoring of Séchilienne rockslide (French Alps): Analysis of seismic signals and their correlation with rainfalls, *Journal of Geophysical Research: Earth Surface*, 115(F3), doi:10.1029/2009JF001532, 2010.

“The English language and style are fine. In my opinion the overall merit of then paper is high.”

**Author Response “Automated Terrestrial Laser Scanning with Near Real-Time Change Detection – Monitoring of the Séchilienne Landslide” by Ryan A. Kromer et al.**

Earth Surf. Dynam. Discuss., doi:10.5194/esurf-2017-6-RC1, 2017

**Anonymous Referee #2**

Received and published: 20 March 2017

We would like to thank Anonymous Referee # 2 for the valuable and detailed comments. We have responded to each comment below in red and made the necessary changes in a marked changes version of the manuscript.

**GENERAL COMMENTS:**

“This paper describes the setup of a terrestrial laser scanning based monitoring system, including the installation of the hardware, pre-processing of the acquired data (e.g. removal of outliers, atmospheric correction, etc.) and also some first analyses (i.e. deformation quantification) and visualization of changes. As test scenario a landslide in France is chosen. This contribution is dedicated to a very innovative and important topic and it is definitely a pioneer study in the field of automatic 4D monitoring of Earth surface dynamics.

The current manuscript reads like a scientific/technical report with clear focus on the documentation of what has been done in this study. The aim is to present the specific TLS-based monitoring solution. I wished to see more science-driven facts and arguments in the paper: It is not clear what parts of the workflow are general facts and are valid to any TLS-monitoring (also other phenomena or LiDAR systems) and which parts/settings/algorithms/etc. are specific for this study site or only for landslides? This is an important fact for all readers because we want to learn how to set up our own system in our research without re-inventing the wheel. This could be improved by making this separation between general findings and the use case more evident in the manuscript.”

Throughout the manuscript, we have separated parts of the workflow that apply to TLS monitoring in general and those that are specific to our study case and that are specific to the instrument we used. We have made this distinction clearer in an opening paragraph in the methods (P.5, line 1-13). We have also made this distinction in throughout the discussion section of the manuscript.

“You are working on landslides. What are the specific "user requirements" for your landslide use case from a process monitoring perspective - regarding hardware, scan acquisition settings (e.g. temporal and spatial resolutions), data processing times, etc.? For example, what is "real-time" and "near real-time" in your case (note that you do not use it consistently in the manuscript)? It would help much if you could describe all requirements that determine how you set up the hardware, software and also analysis methods.”

We have changed all occurrences of “real time” to “near real time” throughout the manuscript. We also added a description of what near-real time means in this case to P.6, lines 7-9.

“The processing workflow described in Sect. 3.2 was designed to monitor earth surface processes in near-real time, defined as immediate post processing after collection, taking less time than the time between scans”

We made the distinction between requirements for our study case and for general use of the system (see comment above) and include a more detailed description in Sect. 3.3, P.17, lines 4-20.

“Furthermore, from a scientific perspective I strongly suggest to publish also your tools and scripts along with this paper. You used many open source frameworks - thus it is straightforward to publish it also open source. This would help the readers to follow your workflow much easier and to follow your work in a transparent manner.”

We will publish the source code as supplementary material. The parameters can also be found within the source code. We have added references in the text to the supplementary material on P.13, line 3 and on P.13, line 27.

“A critical aspect that needs to be revised and explained is the presented alignment of point clouds. If you assume deformations in your data, you should only use data parts (i.e. areas) that do not change (cf. Wujanz et al. 2016: <http://onlinelibrary.wiley.com/doi/10.1111/phor.12152/abstract>). You write on Page 13/ Line 4: "In the fine alignment stage, we use all of the points in the point cloud to optimize the alignment.". I could not find any solution to this fundamental issue of deformation analysis in your paper.”

What was meant here is that we feed the entire point cloud into the fine alignment routine rather than using a subsampled version (keypoints or voxels) as in the initial alignment. We use a rejection pipeline to filter out or trim down correspondences that are the result of outliers, deformation or surface change. This is described in Section 3.2.3. This rejection pipeline ensures that only stable areas of the slope are used to calculate the transformation. To add clarity, we have added a brief description of this process on P.13 following line 4.

We have also added the suggested reference to the discussion section (P.28, line 19) as an alternative to the registration method we applied here. Note that this paper was published in September 2016, after the system was developed and deployed at the landslide test site (testing of our system was in April – May 2016).

“Another critical aspect for improvement is the confidence interval calculation in Sect. 3.2.5. First, I need to mention that you somehow use "accuracy" synonymously to your LoD value (e.g., P15/L5, P19/L9-L14), which pretends that your system quantifies changes or distances with 2-10 mm at 1000 m range.”

Lague et al. (2013) uses the confidence level to estimate the distance measurement accuracy. This is what was also meant here. To increase clarity, we have removed the term accuracy and reserve the term for comparison with independent measurements. We also added more comparisons with independent measurements (extensometer, total station, radar) at the study site.

We have redefined our LoD estimation to include an empirical registration error term as is Lague et al. (2013) and Fey and Whichmann (2017). This is described on P.16, lines 10-21. The empirical registration term accounts for systematic errors in the total error budget. It now better matches independent measurements.

“Following the scanner datasheet specification, your scanner has a range precision of 7 mm at 100 m (1 sigma) and thus it might be worse at 1000 m distance.”

For a single scan point, yes, the reviewer is correct, the range precision is defined as such by the manufacturer. The method described uses averaged distances based on spatial and temporal neighbor distances. This method increases measurement precision by a factor of  $\frac{1}{\sqrt{NN * Tstep}}$ .

“Second, there is no validation with independent reference data. On page 22/last paragraph you state one value comparison (with an extensometer), which is not sufficient to evaluate your results.”

We have included independent comparison points from total station and radar measurements. These independent measurements were added to Figure 11 for comparison and are described on P. 22, lines 1-14.

Note that this system was designed for deformation monitoring purposes for rock slope or landslide sites where independent measurements may or may not be available. For these monitoring purposes, it is more important to confidently show that something has moved or that movement is accelerating than the absolute accuracy of the displacement value itself.

“Without further (mathematical) proof and explanation of your spatio-temporal confidence interval, I cannot approve what you present in this section.”

With our redefined level of detection estimation, we closely match what was done in other studies, for example, Lague et al. (2013) and Fey and Whichmann (2017). By including an empirical registration term, we obtain a better estimate of the LoD, which closely matches independent measurements at the study site.

“Some issue to consider regarding your main assumptions: You do not repeat a single LiDAR measurement if you average over time because you measure something (slightly) different with each scan (i.e. epoch).”

Yes, the reviewer is correct, a single point in the comparison point cloud (data point cloud) is slightly different with each scan, as mentioned. However, with the 4D averaging technique, we account for this variability. By taking the average over space and time we get closer to the centroid point along the local normal vector. We limit the search radius for points close to the local normal vector (see new Figure 6) to a factor times the mean point spacing. By repeating scans, we will get a central tendency towards this centroid. This method is described in detail in Kromer et al. 2015b.

“Your measurements are not independent because you use spatial averaging with neighbors for your cloud-to-cloud distance calculation (Sect. 3.2.4).”

The independent measurements described here are the averaged reference to calibration cloud distances vs the averaged reference to data cloud distances. Not distances between neighboring points. Figure 6 adds clarity to the distance calculation step.

“At the current stage this section is not plausible for me, but I am looking forward for indepth clarification.”

The LoD value is calculated based on a statistical analysis of measurement uncertainty. It is extended from Lague et al. (2013) and Fey and Whichmann (2017) to include the effect of temporal averaging. The LoD calculation includes random instrumental errors, errors due to surface roughness and misalignment errors caused by changing point patterns. We have added a new empirical term to the LoD calculation (Equation 3). This term accounts for remaining errors in the total error budget. These errors are due to misalignment of the point clouds and due to changing systematic errors in the point clouds. Misalignment errors increase with a decrease in point spacing and changing systematic errors could be due to a loss of calibration, due to temperature of the instrument or differences in atmospheric layers, for example. This term is empirically derived by calculating the standard deviation of the distances at known or assumed stable areas of the slopes and for this landslide, at stable total station targets. This is described on P.16, lines 10-21.

“In Sect. 3.3 you finally list some of the settings that you used in your case study. However, many settings are not mentioned, mainly of the processing steps (e.g. threshold for outlier removal, etc.). To be able to reproduce your results, it is necessary to know all the major settings that you applied, which could be put into an appendix section.”

We have included the source code as a supplementary file. All settings used can be found in the source code. We also mention settings that are specific to our study site (P.13, lines 2-3 and 25-26)

#### SPECIFIC COMMENTS:

“- P1/L14: Keywords: "Near real-time" instead of "real-time". “

Near real time is what was meant. We have changed all real-time to near real-time throughout the manuscript.

“P4/L8: ..."of the valley"?”

Corrected to “of the valley”

“P5/L4: -85% compared to which value?”

Added “of peak velocity”

“P6/L6: -> "ILRIS" in capital letters (applies also for other occurrences in manuscript).”

Changed all occurrences to “ILRIS”

“P6/L20: -> "RAM””

Changed to “RAM”

“P7/L6: "Software design": The word "software design" is misleading because you do not actually design a software (as computer scientists would see it); you "use" existing software in a processing chain/workflow.”

Changed to processing workflow design

“P7/Fig.3: I cannot see a pan tilt. Either mark it or add picture.”

Marked pan tilt in Figure 3C

“P10/Sect. 3.2.3: I do not really see the point of your initial alignment processing for each dataset because you use a static scanning setting. Of course, you need to determine an initial alignment when you change the scanner position completely - but why processing it every time and not only if something changes? Please explain better. See also my general comment above.”

This is because there is a home position bias. This means that repeated scanning from the same position results in misaligned clouds. The initial alignment stage insures a good initial fit for the ICP algorithm. The initial alignment stage is also very quick compared to the ICP algorithm. By providing a good initial fit, we reduce overall processing time of the registration pipeline. We have added text to Sect 3.2.3 (P.10, line 30) explaining this reasoning.

“P10/L27: positon -> position”

Changed to position

“P10/L28-29: These are speculations. I would remove such speculations from the paper and replace it with some hard facts.”

Removed these speculations.

“P11/first paragraph: This might be only necessary for "slow" scanners. Newer generation scanners are quite fast and such full scans could also be splitted and treated separately because we know the timestamps for each laser point.”

We have added that this may be only necessary for slow scanners and that this applies to our scanner/survey design.

“P13/Sect. 3.2.4: A sketch figure explaining the 4D distance calculation would increase comprehensibility of the method in this paper.”

This part of the algorithm is explained in Kromer et al. 2015b. However, to improve comprehension we have drawn a new figure highlighting the distance calculation method (Figure 6).

“P14/24: pi is known and must not be explained.”

Removed pi as requested.

“P16/Sect. 4.1.: is a valuable section!”

“P17/9: You use "surface saturation" or "slope saturation level" to describe the changing reflectance of the surface when it gets wet. From a physical perspective the changing reflectance of the surface is the main issue. I think "saturation" does not really fit to explain this issue because it has nothing to do with saturation of soil/material etc. - > reflectance of surface/target in the laser's wavelength.”

This has been reworded as requested in this section and in the discussion/conclusions sections.

“P21/Fig. 8: Difficult to see anything. Too small. Rework figure to be larger and you could mark the processes that you identified in this figure.”

We have reworked Figures 7-9 to be larger and easier to read.

“P23/Fig. 9.: Add infos/description about points also in figure caption.”

Added description of the points to now Fig 10.

“P27/10: You did not evaluate the accuracy of the system.”

Changed to uncertainty and included independent total station and radar measurements.

“P27/19: This statement is not generally valid because other LiDAR systems can penetrate water/rain/etc. much better due to their different wavelength (e.g. green wavelength TLS). For your specific system it is valid, but you should not draw general conclusions from it.”

Removed general statement and specified that the discussion applies to the TLS system used in the study.

“P27/22: affect -> effect.”

Changed to effect.

“P28/6: must be Eitel et al. (2016)”

Changed to Eitel et al. (2016)

“P28/12: "We were also...". Is there something missing in this sentence? Difficult to understand.”

Rewrote second part of this sentence to increase readability.

# Automated Terrestrial Laser Scanning with Near Real-Time Change Detection - Monitoring of the Séchilienne Landslide

5 Ryan A. Kromer<sup>1,2</sup>, Antonio Abellan<sup>1,2,3</sup>, D. Jean Hutchinson<sup>2</sup>, Matt Lato<sup>2,5</sup>, Marie-Aurelie Chanut<sup>4</sup>,  
Laurent Dubois<sup>4</sup>, Michel Jaboyedoff<sup>1</sup>

<sup>1</sup> Risk Analysis Group, University of Lausanne, Lausanne, Switzerland

<sup>2</sup> Geomechanics Group, Geological Sciences and Geological Engineering, Queen's University, Kingston, Ontario

<sup>3</sup> Scott Polar Research Institute, University of Cambridge, Cambridge, UK

<sup>4</sup> Groupe Risque Rocheux et Mouvements de Sols (RRMS), Cerema Centre-Est, France

10 <sup>5</sup> BGC Engineering, Ottawa, Canada

*Correspondence to:* Ryan A. Kromer ([ryan.kromer@queensu.ca](mailto:ryan.kromer@queensu.ca))

## Keywords

**Near** Real-Time Terrestrial Laser Scanning, Landslides, Deformation Monitoring, ATLS, Point Cloud Library,

## 15 Abstract

We present an Automated Terrestrial Laser Scanning (ATLS) system with automatic near real-time change detection processing. The ATLS system was tested on the Séchilienne Landslide in France for a six-week period with data collected at 30 minute intervals. The purpose of developing the system was to fill the gap of high temporal resolution TLS monitoring studies of earth surface processes and to offer a cost effective, light, portable alternative to GB-InSAR deformation monitoring. During the study, we detected the flux of talus, displacement of the landslide and pre-failure deformation of discrete rockfall events. Additionally, we found the ATLS system **to be** an effective tool in monitoring landslide and rockfall processes despite missing points due to poor atmospheric conditions or rainfall. Furthermore, such a system has the potential to help us better understand a wide variety of slope processes at high levels of temporal detail.

25

30



## 1 Introduction

Terrestrial Laser Scanning (TLS) is extensively used in the earth sciences to understand and monitor earth surface properties and processes (Eitel et al., 2016). It is commonly used to create dense 3-Dimensional (3D) point clouds or digital elevation models to map and characterize the earth surface, and to better understand surface processes by comparing multiple acquisitions over time. Dense 3D data are also used to quantify and characterize natural hazards (Jaboyedoff et al., 2012) and to monitor hazard processes (Barbarella, 2013; Rosser et al., 2005; Royán et al., 2013; Travelletti et al., 2008). The use of terrestrial laser scanning and other remote sensing technologies now forms an important part of natural hazard risk management approaches (Corominas et al., 2014; Jaboyedoff et al., 2012; Metternicht et al., 2005).

Many studies have used multitemporal TLS (>month, defined by (Eitel et al., 2016)) to monitor landslide processes (Abellán et al., 2010; Avian et al., 2009; Bremer and Sass, 2012; Dewitte et al., 2008; Lague et al., 2013; Lato et al., 2014; Lim et al., 2005; Oppikofer et al., 2008; Rosser et al., 2005; Royán et al., 2015; Schürch et al., 2011; Teza et al., 2007; Travelletti et al., 2008); the use of TLS at a hyper-temporal level (<month, defined by (Eitel et al., 2016) ), however is limited e.g. (Kromer et al., 2015a; 2015b; Milan et al., 2007; Oppikofer et al., 2008). Additionally, monitoring at >daily intervals, here defined as super-temporal monitoring, still represents a challenge and has yet to be exploited, especially over long duration temporal monitoring periods. Fully utilizing the spatial (x,y,z) and time dimensions in earth surface process studies represents one of the major growth areas of TLS research, as pointed out by the review paper by Eitel et al., (2016).

Studying earth processes at a super-temporal level with TLS has many advantages. It would reduce or eliminate the problem of event superposition and coalescence when monitoring geomorphic events too infrequently, as discussed in Lim et al. (2009). With frequent scanning measurement, uncertainties can be significantly reduced by taking advantage of the large number of spatial and temporal measurements collected (Abellán et al., 2009; Abellán et al., 2013; Kromer et al., 2015b). Furthermore, in landslide emergencies, a TLS system would be highly beneficial as it can be easily transported, setup rapidly, can be carried through rugged and remote areas. A TLS based warning system would be a light, portable, cost-effective alternative to Ground- Based Interferometric Synthetic Aperture Radar (GB-InSAR) monitoring technologies.

The key challenges in using TLS to study earth processes at the super-temporal level is the high cost of frequent data acquisitions and challenges in processing and managing large amounts of data (Orem and Pelletier, 2015). The advent of Automated Terrestrial Laser Scanners (ATLS) has made high temporal terrestrial acquisitions easier (Adams et al., 2013; Eitel et al., 2013), however, automatic processing of the data is still required to relieve the post processing burden. This is especially important for landslide early warning monitoring, where processed results are needed as soon as possible for decision makers.

The aim of this paper is to detail the development of an ATLS system with automatic near real-time data processing and its application at a test landslide site. We demonstrate the feasibility and limitations of a near real-time monitoring system and demonstrate how the system can be used to monitor pre-failure deformation of landslides and discrete rockfall events. The system may be suitable for a wide range of applications in the earth sciences including monitoring of soil erosion, volcanic activity, fault movement and glacier dynamics, for example.

## 2 Study site description

We conducted our experiment at the Séchilienne landslide located 20 km South East of Grenoble in France along RD 1091 Grenoble – Briançon in the Romanche valley of the French Alps (Fig. 1). This landslide was chosen for the experiment because its geological characteristics, movement, hydrology and hydrochemistry have been well studied

(Baudement et al., 2013; Chanut et al., 2013; Dubois et al., 2014; Dunner et al., 2011; Guglielmi et al., 2002; Helmstetter and Garambois, 2010; Kasperski et al., 2010a; Le Roux et al., 2011), existing infrastructure at the site made it ideal for testing the TLS system (Duranton, 2006) and the variety of active slope processes, including displacement of the landslide, frequent rockfalls and movement of talus or scree material.

Kasperski et al. (2010) describe two parts of the landslide, an active frontal zone, known as “Les Ruines”, and subsidence of the Upper part of the Mont-Sec slope between 600 and 1180 m above sea level (a.s.l.) comprising an area of 70 hectares, outlined in Fig. 1. The upper Mont-Sec slope is delimited by a 20 to 40 m high scarp (Helmstetter and Garambois, 2010). Over the past century the “Les Ruines” area has been a source of frequent rockfalls (Le Roux et al., 2011). Early studies of the landslide revealed the risk of collapse of 2 to 3 million m<sup>3</sup> from the frontal zone and the instability encompassing Mont-Sec at around 20 to 30 million m<sup>3</sup> (Evrard et al., 1990). More recent estimates of the landslide depth using geophysics put the frontal zone at 3 million m<sup>3</sup> and the Mont-Sec instability at 60 million m<sup>3</sup> (Le Roux et al., 2011). However, these volumes were established without precise knowledge of the slope deformation mechanism and are undoubtedly under evaluated given the field data acquired since.

Geologically, the landslide is part of the external crystalline massif of Belledonne. The landslide mainly consists of mica schists, which are composed of alternating metamorphic sandstones and siltstones. Pothérat and Alfonsi (2001) identified several faults intersecting the landslide and three sets of near vertical fractures N20°E, N120°E and N70°E. Detailed description of the geology of the landslide and surrounding area can be found in Helmstetter and Garambois (2010), Kasperski et al. (2010) and Le Roux et al. (2011).

30

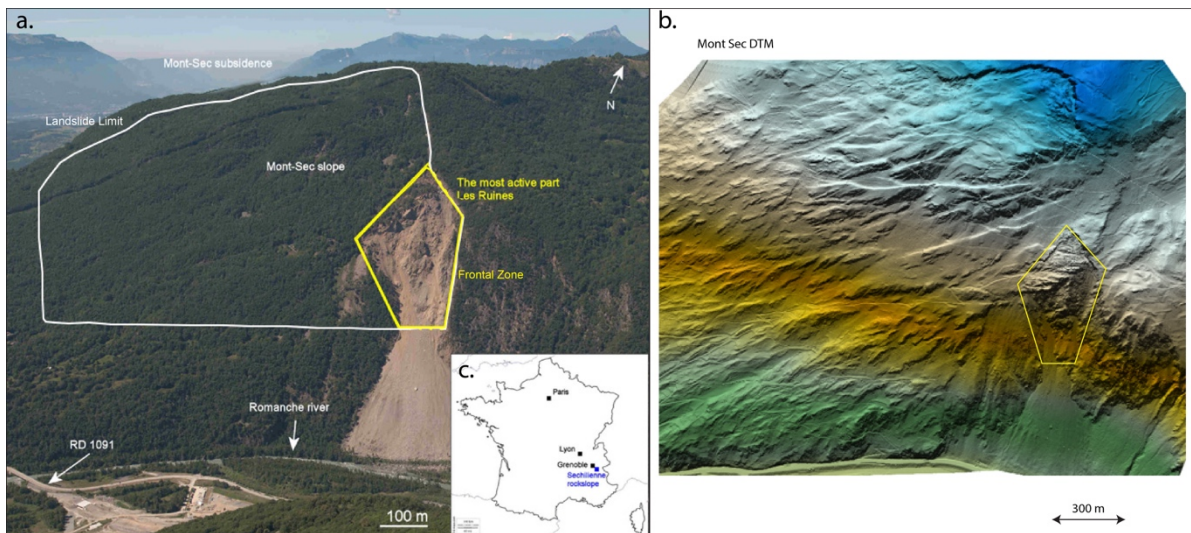


Figure 1: a. Location of the Séchilienne rock slope in the Romanche River valley along RD 1091. The Landslide is outlined in white covering an area known as the Mont-Sec Slope. The most active frontal zone is outlined in yellow. b. Digital Terrain Model (DTM) of the Mont Sec slope with most active frontal zone of the landslide highlighted. c. Location of the Séchilienne landslide within France.

5

The French public national body, Cerema, has been monitoring the landslide since 1985 (Dubois et al., 2014; Duranthon, 2006). Multiple monitoring techniques are used on the landslide including 31 extensometers, 30 radar targets, 65 infrared targets, two boreholes with slope inclinometers and GPS receivers. A total station, radar unit and a permanent camera station are located on the opposite side of the valley inside the Mont Falcon Station (shown in Fig. 3). Movement at depth is monitored using a 240-meter-long exploration adit and three 150 m depth boreholes in the high motion zones. A seismic monitoring system has been in place since 2008. The system consists of three seismological stations and receivers that record rockfall events and local and regional scale earthquakes (Helmstetter and Garambois, 2010).

10

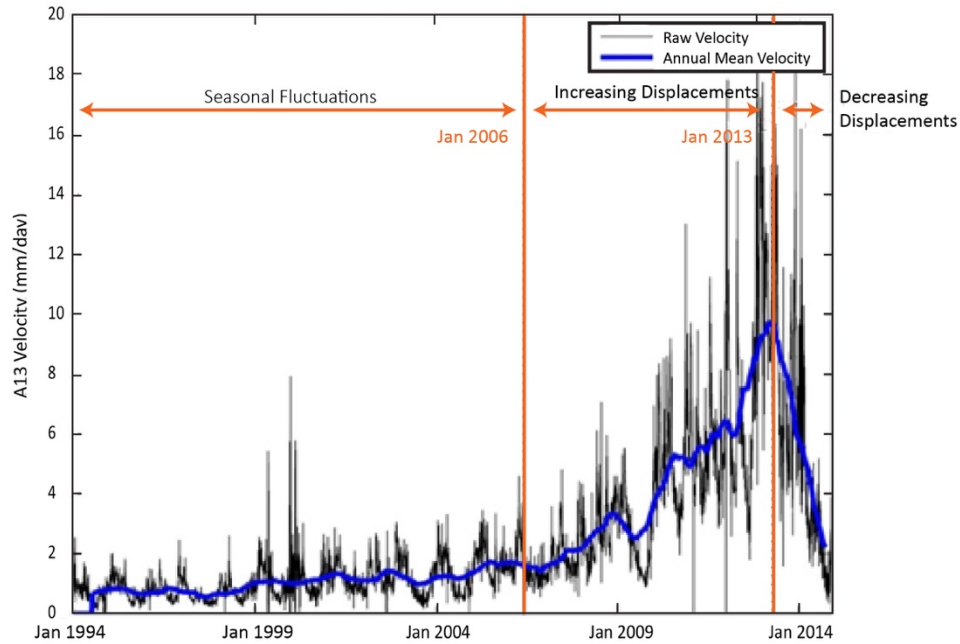
Displacement of the landslide ranges from 0.01 to 0.10 m per year except at the level of the frontal zone in the east where displacements reach up to 3.5 m per year (Dubois et al., 2014). Figure 2, plots the displacement of extensometer A13 located in this frontal zone since 1994. Dubois et al. (2014) divided the landslide evolution into three main displacement phases:

15

- from 1994 to 2006, seasonal fluctuations of the displacement rates were observed in connection with precipitation (rain and snow melt);
- from 2006 to December 2012, there were less fluctuations of the displacement rates and a general increase of the average velocity;
- since January 2013, a decrease in average velocity has been observed. This decrease has been strong since July 2013, then stronger since Spring 2014. It has reached -85 % of peak velocity between end-June 2013 and end-July 2015.

25

Vallet et al. (2015) found that groundwater fluctuations explain the periodic variations in displacement and the long-term exponential trend, interpreted as a consequence of weakening of rock due to groundwater pressure action. The landslide shows signs of deep-seated gravitational deformation with displacement revealing a complex structure with cone sheet fractures, counterscarps and depletion and accumulation zones. Kasperski et al. (2010) interpret a landslide failure mechanism of toppling and subsidence of vertical rock layers. Frequent measurements since 2009 support this interpretation revealing a deformation mechanism of deep flexural toppling without a basal failure plane.



**Figure 2: Velocity in mm/day at extensometer A13 from 01 January 1994 until 31 March 2015 (black), and annual mean velocity (blue) (Dubois et al., 2014).**

10

In addition to the monitoring network, multi-temporal terrestrial laser scanning (seven acquisitions 2004-2009 (Kasperski, 2008) and an additional five TLS scans from 2009-2015 (Vulliez, 2016)), multi-temporal aerial laser scanning (2011 and 2014) and terrestrial photogrammetry (2015) were conducted at the site (Vulliez, 2016). The goal of these data collections was to provide continuous spatial coverage of the landslide movement with a focus on the active frontal zone. The studies have helped characterize the instability and displacement patterns and have helped better elucidate the failure mechanism, however prior to this study, high spatial density hyper- and super-temporal data have not been acquired.

### 3 Methods

We designed the hardware components of the monitoring system described in Sect. 3.1 for the study of landslide, talus and rockfall processes at the Séchilienne landslide site. The hardware components were designed for a temporary (months) installation and took advantage of existing infrastructure available at the study site, a concrete monitoring centre operated and maintained by Cerema. The hardware could be adapted for other use cases, for example a temporary monitoring installation in the order of days could be operated using a tripod and a generator whereas a longer-term installation could be installed with a permanent protective housing, solar panels and batteries. The processing workflow described in Sect. 3.2 was designed to monitor earth surface processes in near-real time, defined as immediate post processing after collection, taking less time than the time between scans. In this section, we point out design elements that are specific to the study of landslides and the TLS scanner used. For example, for the study of pre-failure deformation of rockfalls or landslide displacements, the timing of processing is critical to be able to provide timely warning of a potential imminent failure event and the workflow is designed to process data as quickly as possible after data collection. Specific input parameters pertinent to our study case and to landslide processes are described in Sect 3.3.

#### 3.1 Site setup and hardware components

We used an Optech **ILRIS** long range (LR) laser scanner (Teledyne Optech, 2014) for this study. We installed the TLS system on the roof of the monitoring centre (Fig. 3(a)). To protect the TLS system against the elements, we constructed a wooden encasement painted with a weather resistant coating (Fig. 3(c)). The encasement housed the TLS, the battery backup, a manual tilt, power and Ethernet cables. We designed the front opening of the encasement to allow +/- 10 degrees of tilt, but small enough to not allow the TLS to be removed. We opted for an open design compared to one with an infrared permeable screen to maximize the intercepted returns and to allow natural ventilation of the equipment. Earlier testing through various glass mediums revealed interference with the signal return. To further increase ventilation, we included slits in both the side and back panels of the encasement. A lid covered the top of the encasement and extended in front of the viewing opening to minimize the amount of water entering the encasement. We bolted the encasement to the top of the monitoring centre structure and used chain and locks for theft protection. The TLS system was supplied with power via cables connected to the interior of the monitoring centre.

Data from the TLS system was transferred from the system to an onsite computer located in the interior of the monitoring centre (Fig. 3(b)). The purpose of the computer was for automated **near** real-time data processing and visualization of the results. Data was stored on both the computer hard drive and on external backup drives. The computer consisted of an ordinary notebook (HP Elitebook 8740 w) with a dual core 2.67 GHz Intel Core i7 processor and 4.0 GB of **RAM**. The computer was connected to the internet via a cellular link. This allowed the entire system to be operated and the data visualized remotely via remote control software.

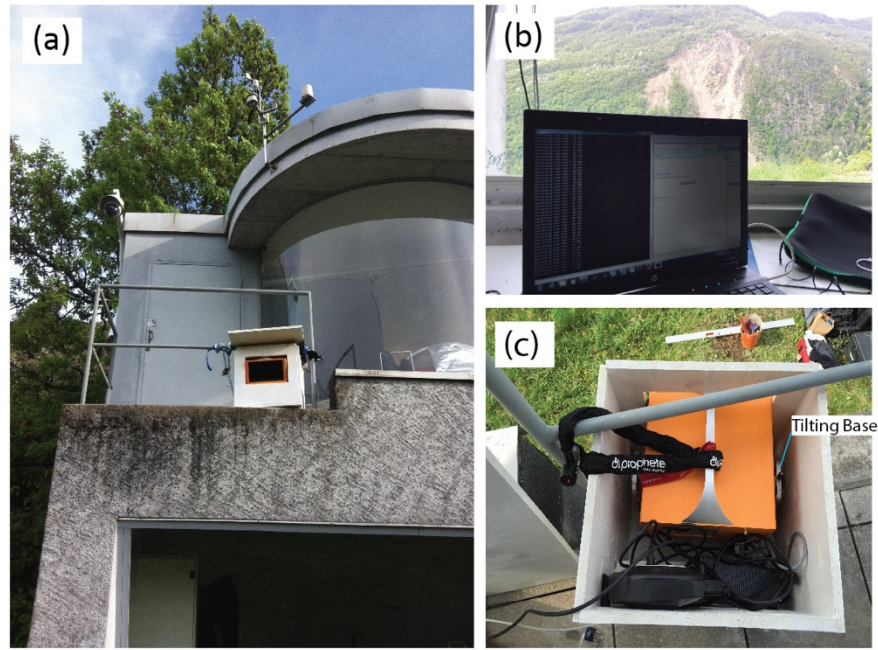


Figure 3: Setup of the ATLS monitoring system at the Cerema monitoring centre in Séchillienne, France which consisted of: (a) TLS system and protective housing installed on the roof the centre; (b) Notebook installed inside the monitoring centre for **near** real-time data processing and data visualisation; and (c) TLS, **tilting base** and battery backup built within a protective housing.

5

### 3.2 Processing workflow design

Processing point clouds for change detection analysis typically involves **several** manual steps. These steps involve manually removing vegetation and erroneous points, picking similar points between successive point clouds for an initial estimation of the registration transformation matrix, an application of the Iterative Closest Point (ICP) algorithm for alignment, the building of a meshed surface model and the calculation of distances (methods reviewed in Abellán et al., (2014)). This manual process cannot be performed for scanners operating almost continuously and automation of these steps is required. Furthermore, the processing must happen rapidly so that the results can be interpreted in sufficient time in emergency scenarios, *i.e.* an impending landslide.

We designed the **processing workflow** of the system to operate the scanner at set intervals and to process the data in near real-time. **The processing workflow** consists of modules to operate the scanner automatically, to manage and backup data, and to automatically process the data. Due to intellectual property restrictions, we could not design our own module to operate the scanner, instead we used Optech's **ILRIS** Command Line (ICL) application version 1.6.7 (Teledyne Optech, 2014) which initiates a scan with predefined scan parameters. We designed a data processing module to intercept the

incoming scan data from the ICL application. The data processing module was developed using C++ with QT and the Point Cloud Library (PCL) (Rusu and Cousins, 2011) and is outlined in Fig. 4. The first phase of the processing module consists of pre-processing steps: (a) removal of unwanted points using a pass-through filter and (b) a Quality Control (QC) step consisting of the rejection of a point cloud if it does not contain a specified minimum number of points, which is commonly  
5 due to poor atmospheric conditions or rainfall. This stage also applies an atmospheric correction to the point clouds. The second step is registration of the point cloud to a reference through a registration pipeline consisting of an initial alignment stage followed by an iterative fine alignment stage. The **initial** alignment stage was designed to align the point clouds if the scan position has been changed, but in general, is used as a good initial starting point to speed up the iterative registration process. The initial alignment consists of finding repeatable keypoints in the point cloud, defining descriptors based on the  
10 local keypoint point neighbourhoods and finding correspondences between features to perform an initial transformation. Refined alignment is conducted by iteratively transforming the point cloud, finding correspondences and using a rejector pipeline to discard poor correspondences until a convergence criterion is met (Fig. 5). Change detection is conducted by calculating slope dependent change vectors and filtering noise using neighbours in space and time (Kromer et al., 2015b). The processed points clouds are visualized in near real-time using a visualizer designed using a PCL visualizing module, and  
15 change time series data are plotted using Matlab (The Mathworks Inc, 2016). A detailed description of this workflow follows in Sections 3.2.1 through 3.2.5.

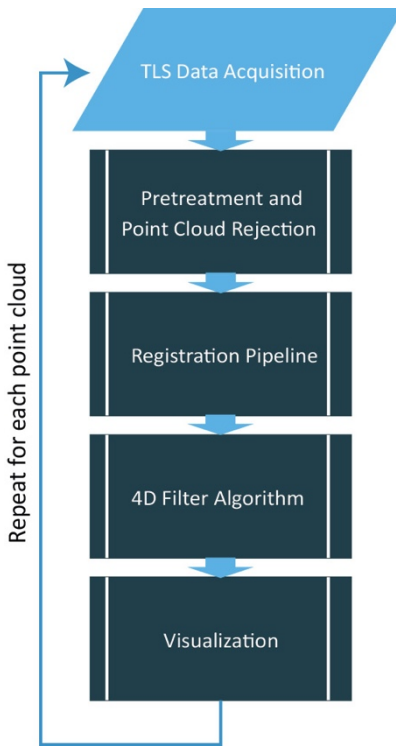


Figure 4: Near real-time data processing workflow consisting of a data automated acquisition module, a pre-treatment and point cloud rejection stage, a rejection pipeline consisting of an initial alignment and an iterative fine alignment stage, a 4D filtering and distance calculation algorithm (Kromer et al. 2015b) and a visualization module. This workflow is repeated for each point cloud acquisition.

### 3.2.1 TLS data acquisition

ILRIS 3D scanners are typically operated through Optech’s graphical controller software. To operate the scanner, the user manually defines a scan area as well as scan parameters such as optical camera setting, vertical and horizontal resolution, pulse interception (first or last) and the location to save the data. Before the data can be further processed, Optech’s parser must be applied. All of the previous steps can be applied using Optech’s ICL application (Teledyne Optech, 2014). It is an executable program that reads a text file with pre-set scan parameters, runs the scanner once and outputs a ASCII formatted point cloud (x, y, z, intensity). We applied the ICL application using task scheduling software to make it operate the automated data collection task. Our processing workflow then monitored the output folder and intercepted the incoming point cloud for further processing.

The ICL application does not apply a proprietary process known as Automated Scan Correction (ASC), which is part of the graphical controller software. This process is normally used to compensate range and angular measurements for temperature drift within the ILRIS itself (Wang and Lu, 2009). To compensate for the lack of ASC in the ICL application, we developed our own temperature correction process described in Sect.3.2.2.



### 3.2.2 Pre-treatment

The first step in pre-treatment is the removal of unwanted points within the point cloud. Typical change detection workflows consist of the removal of vegetation points, removal of points outside the target and removal of outlier points e.g. Abellán et al. (2014). In our workflow no specific algorithm for vegetation removal was applied because our test area was mostly clean of vegetation and we removed the effect of vegetation on point cloud registration through a rejection scheme (Sect. 3.2.3). By including vegetation, this also allowed us to monitor changes in vegetated areas on the slope, which can be important to study the effect of vegetation on rockfall triggering, for example (Krautblatter and Dikau, 2007) or used as a means to track the 3D displacement of the landslide using object tracking methods (Monserrat and Crosetto, 2008; Oppikofer et al., 2009).

10 We applied two filters to the data, a statistical outlier removal and a pass through filter, available in the PCL filter class (Rusu and Cousins, 2011). The statistical outlier removal was used to remove areas with low point densities and sparse outliers, such as artefacts from multipath or edge effects (Lichti et al., 2005). By removing these points, errors in calculating surface normals, in registering the point cloud and in change detection are reduced. The outlier removal algorithm calculates for each point the distance to all its neighbours and removes points whose distances are outside of the point cloud's global mean and standard deviation. The pass through filter is used to remove points outside of a specified target area. For example, these may include points in the foreground or background or densely vegetated areas. This is done by defining limits in each dimension where points falling outside are to be removed.

15

The next pre-treatment step is querying the total amount of points acquired in the point cloud. If the number of points does not meet a pre-defined threshold, the entire point cloud is rejected, no output is generated and the processing is queued until the next point cloud is intercepted. The purpose of this is to remove point clouds heavily affected by poor atmospheric conditions. These clouds suffer from low point density, are difficult to register and do not produce meaningful change detection results.

20

25 The last pre-treatment step consists of an atmosphere correction algorithm and was conceived due the restriction on Optech's ASC mentioned in Sect. 3.2.1. This step was applied retroactively, and has now been implemented into the system for automatic correction. Atmosphere corrections are applied as a scale factor and usually compensate for the varying speed of a laser at a given wavelength as it passes through varying refractions of air as a function of temperature, pressure, humidity, CO<sub>2</sub> content, e.g. Ciddor correction (Ciddor, 1996). Due to the lack of ASC, the internal system temperature drift had a larger effect on the range measurements than the refraction of the atmosphere so we opted for a target based correction. **This correction may not be required for other scanner types that automatically apply this correction during data collection.**

30

To conduct the atmosphere range correction, we used a network of pre-existing stable targets on the slope. The targets were measured independently using a total station during the monitoring period and showed non-significant displacement. We programmed the algorithm to automatically identify the targets based on the point cloud intensity values. The algorithm calculates the distances between the centroids of every target for the reference scan and for the target scan being corrected.

5 The ratio of target distances of the reference scan and of the scan being corrected is then calculated. This ratio, or scale factor, was then applied to the point cloud being corrected. Application of this algorithm resulted in cm-level range corrections at the 1000 m range.

### 3.2.3 Registration pipeline

A registration pipeline is necessary since we cannot assume that the position and orientation of the scanner remains constant

10 over time and because there are time dependent measurement errors resulting from non-instrumental factors (*e.g.* environmental factors) that may not be accurately modelled. Even when a TLS scanner is in a fixed position, Lichti and Licht (2006) found there is a home position random bias which causes the measured position and orientation of the instrument to change over time. We found that repeated laser scanning, without moving the position of scanner, produced misaligned point clouds over different scan epochs. **To decrease the overall processing time of the registration pipeline, we**

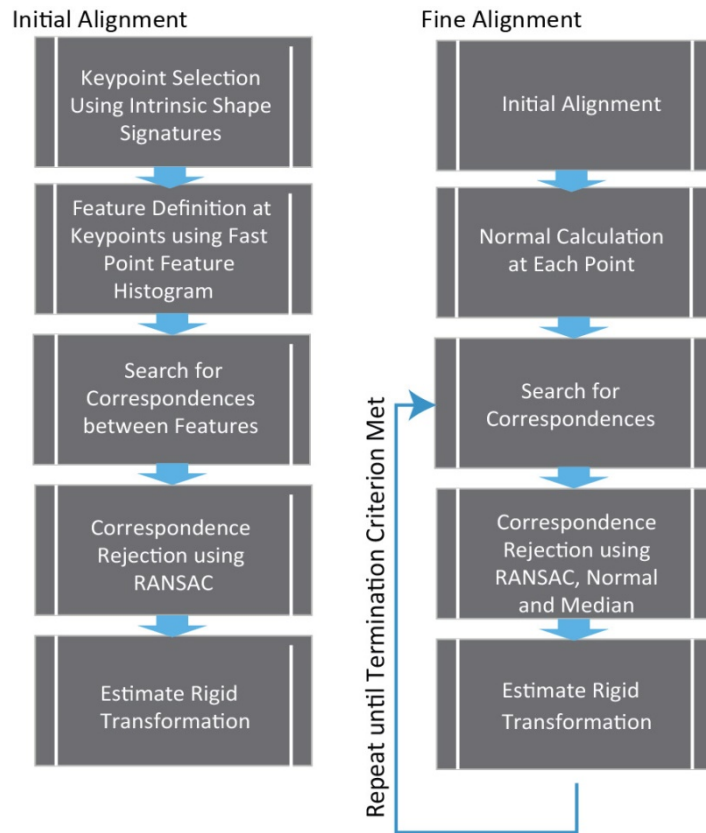
15 **implemented an initial alignment stage. This provides that ICP algorithm with a better starting fit and consequently reduces the number of iterations required for convergence of the best fit algorithm.**

Time-dependent errors can also vary during a single data collection **for slower scanners** causing distortions of the scan. To reduce this effect, **we opted** to collect more frequent shorter scans so that the scans are taken with more consistent

20 environmental conditions. To increase measurement certainty, we prefer to repeat point cloud acquisitions **for this study design**, rather than do repeated point measurements within the same scan, which results in point clouds that take longer to collect and are more affected by time dependant errors. Our preference is for shorter scans to reduce distortions occurring within a scan in favour of errors in point cloud home position for scans collected at different epochs. The latter can be corrected using point cloud registration.

25 We designed our registration pipeline to consist of two main steps, an initial alignment stage and a fine alignment stage (Fig. 5), using the PCL registration Application Programming Interface (API) (Holz et al., 2015). The purpose of this design was to improve overall convergence time of the registration and to align clouds that are far apart, in cases where the scanner was moved, for example. In typical workflows the initial alignment stage involves manually selecting corresponding points

30 between point clouds of successive epochs *e.g.* (Oppikofer et al., 2008). In our approach this is done automatically using descriptor matching (Holz et al., 2015).



**Figure 5: Registration pipeline workflow consisting of an initial alignment stage and a fine alignment stage. The initial alignment stage aligns two point clouds independent of orientation and position and is based on keypoint and descriptor matching. The fine alignment stage is an iterative corresponding point variant consisting of a matching, rejection and alignment stage.**

5

The initial alignment step is performed using a subset of points known as keypoints. Keypoints consist of points in a point cloud that are both distinctive and repeatable. That is, they are unique points that can be found even if the point cloud was collected using different scanners or scan positions. To define these keypoints, we use the Intrinsic Shape Signatures (ISS) algorithm (Zhong, 2009), which uses a pruning step to discard points with similar spreads along principal directions and includes points with large variations along each principal direction. At each keypoint we define feature descriptors using the fast point feature histogram algorithm (Rusu et al. 2009). For each keypoint, the relative orientation of normals and distances between all point pairs within a specified search radius are calculated. Correspondences are estimated between features in scans from different epochs, using a nearest neighbour search in feature space, using a fast approximate kd-tree neighbourhood search algorithm known as Fast Approximate Nearest Neighbours (FLANN) (Muja and Lowe, 2009). We use the Random Sample Consensus algorithm (RANSAC) (Fischler and Bolles, 1981) to estimate the best rigid translation and rotation between the reference and data clouds completing the initial alignment. The idea of the initial alignment stage is to get the two point clouds close enough that the fine alignment algorithm converges quicker. The initial alignment stage can

10

15

also successfully align points from different positions, *e.g.* if the scanner was moved or the orientation of the scanner changed. **Parameters for the ISS pruning step, feature definition and RANSAC algorithm were empirically derived for our study case prior to the commencement of near-real time monitoring and can be found in the supplementary material.**

5 In the fine alignment stage, we use all the points in the point cloud **as input** to optimize the alignment. **The correspondences are then trimmed down to include only stable areas using a rejection scheme.** We designed our own iterative correspondence algorithm using the PCL registration API (Holz et al., 2015). The algorithm consists of an iterative process where we cycle through the following steps until a convergence criterion is met:

- 10
- 1) Matching step → Find correspondences between data and reference point clouds
  - 2) Rejection step → Removal of invalid correspondences through a rejection pipeline
  - 3) Alignment → Solve for the rigid transformation and rotation that minimizes the error of the correspondence pairs

For the matching step, we find correspondences from points in the reference cloud to points in the data cloud using a normal shooting method (Chen and Medioni, 1992). We use a combination of correspondence rejection algorithms applied in series to filter out poor or erroneous matches. First we apply the RANSAC algorithm to eliminate outlier correspondences, as in the initial alignment step, followed by a surface normal filter and finally by a median rejector. The application of the RANSAC algorithm within the iterative framework keeps the algorithm from converging into a local minimum (Holz et al., 2015). The normal rejector filters out correspondences that have incompatible normal and the median rejector filters out correspondences that are greater than a factor times the median for each iteration. It thus adapts during each iteration becoming smaller as the point clouds become more closely aligned. In the alignment step, we find optimal rigid transformation by applying the Levenberg-Marquadt nonlinear solver (Levenberg, 1944; Marquardt, 1963) to minimize the error between the reference and data cloud using a point to plane error metric (Chen and Medioni, 1992). The three main steps, matching, rejection and alignment, are repeated until a predefined convergence/termination criterion is met. The convergence criteria consist of a maximum number of iteration absolute transformation threshold, a relative transformation threshold, maximum number of similar iterations, relative mean square error and absolute mean square error. **Parameters for the ICP algorithm and rejectors applied in this study were empirically derived prior to monitored and can be found in the supplementary material.**

### 3.2.4 4D change detection and de-noising algorithm

30 We use a 4-Dimensional (4D) (space and time) algorithm described in Kromer et al., (2015b) to detect change between successive point clouds and filter random noise due to **surface roughness and instrumental error** using neighbourhood distance values in both space and time. We apply an empirical calibration step to subtract systematic errors **that are a result of using the same reference scan for all distance calculations** from the reference scan (*e.g.* Fig. 6). Point cloud to point cloud

distances are averaged using neighbourhood distance values in space and through time. A balance between spatial and temporal averaging should be optimized for the signal being studied, as discussed in Kromer et al., (2015a), to avoid spatial or temporal smoothing of the distance values. The combined total of spatial and temporal neighbours used for averaging also determines the reduction in uncertainty of the calculated mean distance values, for example, by averaging more distance samples in space and time the uncertainty of the mean distance value will be reduced by a factor of (Eq. 1):

$$\frac{1}{\sqrt{NN * T_{step}}} \quad (1)$$

where NN is the number of spatial neighbours used and  $T_{step}$  is the number of temporal scans used for averaging.

10

The algorithm is described in detail in Kromer et al., (2015b). Here we summarize the main steps of the algorithms as they pertain to the near real-time monitoring system. Each point cloud that is acquired first passes through the pre-treatment stage and registration pipeline. The initial point clouds collected are part of the calibration stage and this continues until the specified number of calibration point clouds is reached. Following the calibration phase, an accumulation phase begins. In this phase, points clouds are processed up until the number of point clouds used for temporal filtering is reached, defining the time step ( $T_{step}$ ). Once enough clouds have accumulated, temporal filtering begins. In this stage, for each point cloud, 4D filtering is applied using the previous  $T_{step}$  point clouds and the calibration distances are subtracted.

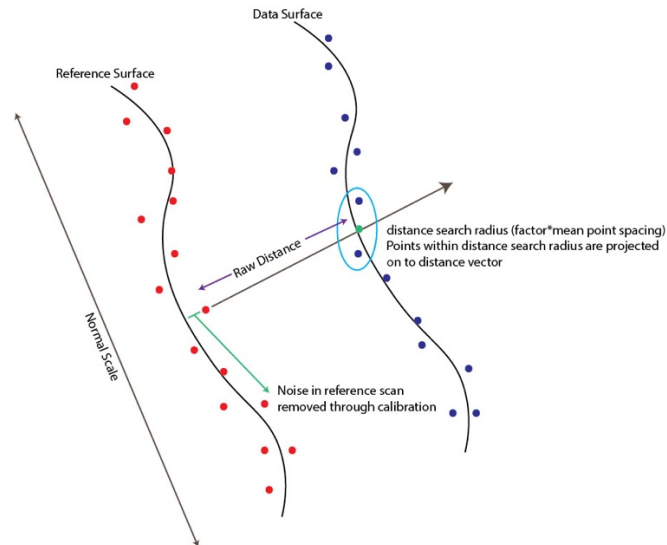
15

The 4D algorithm calculates distances between point clouds using a slope dependent normal, similar to that of the M3C2 algorithm described by Lague et al., (2013). Based on our experience with the system on a real slope in adverse atmospheric conditions, we made several minor changes to the 4D algorithm's distance calculation step. In the distance calculation step described in Kromer et al. (2015b) we project a set number of points on to the local surface normal vector and take the average distance along the normal as the raw distance (Fig. 6). Here we added a limitation as to how far the points can be found away from the local surface normal vector. This limitation is a specified factor of the mean point spacing of the slope. For example, if set to a factor of 1.5, points outside 1.5 times the mean point spacing will not be projected on to the local normal vector for raw distance calculation. Additionally, to prevent averaging distances using spatial neighbours that are too distant from the target point, we apply a hybrid range and nearest neighbour search. The hybrid approach firstly does a range search surrounding the target point, then checks if the number of points found meets a minimum threshold. This threshold was set to (Eq. 2):

30

$$\frac{1}{6} \pi R^2 \quad (2)$$

where  $R$  is the range search radius. If the threshold is not met, a Not a Number (NaN) value is assigned to the target point. With these modifications, the number of points used to calculate the raw distance and for spatial averaging and the distance uncertainty will be variable. The spatial variability in the uncertainty is calculated using the spatio-temporal confidence interval (Sect. 3.2.5).



5

**Figure 6: Drawing illustrating the distance calculation step. Raw distances are calculated along a local surface normal from the reference point. The corresponding point in the data cloud is calculated as the mean of the points projected on to the normal vector that are within a radius of a specified factor of mean point spacing.**

### 10 3.2.5 Spatio-temporal level of detection

We define a spatio-temporal level of detection to account for errors that vary through space and time. Factors such as variable target distance (and thus footprint size), variable point density, incidence angle, variable reflectivity, atmospheric conditions and variable roughness all contribute to spatially variable errors on the slope (Lague et al., 2013). **Additionally,**  
 15 **changing atmospheric conditions, scanner temperature, slope reflectivity and misalignment errors can change through time.**

Lague et al. (2013) estimated statistically significant change between two point clouds of a complex topography using a spatially variable confidence interval. We added the temporal component to the confidence interval because both spatial and temporal averaging is conducted in the 4D algorithm. The spatial-temporal confidence interval is calculated at 95%  
 20 confidence level and represents an estimate of distance uncertainty for a specific point in space at a specific moment in time.

As in Lague et al. (2013) and Fey and Wichmann (2017), we define the confidence interval at 95% or the Level of Detection at 95% (LoD<sub>95%</sub>) to represent an estimate of the minimum detectable change.

To estimate the spatial-temporal confidence interval, we first calculate the distribution of distances using all the comparisons from the reference cloud to the calibration clouds and the distribution of distances from the comparison of the reference cloud to all the data clouds within the specified temporal averaging window ( $T_{step}$ ). The two distributions, reference to calibration cloud distances and reference to  $T_{step}$  cloud distances are assumed to be two independent Gaussian distributions with independent variances, variances ( $\sigma_{cal}, \sigma_{data}$ ), as in Lague et al. (2013). The two distributions have means  $\mu_{cal}$ ,  $\mu_{data}$  and have sizes of  $n_{cal}$  (NN \* calibration clouds) and  $n_{data}$  (NN \*  $T_{step}$ ), respectively. The confidence interval at 95% ( $Z_{score} 1.96$ ) is then calculated using a Z test formulation for the difference between means  $\mu_{cal}$  and  $\mu_{data}$  for  $n_{cal}$  and  $n_{data}$  greater than 30 in Eq. (3).

$$LoD_{95\%} = \pm 1.96 \left( \sqrt{\frac{\sigma_{cal}^2}{n_{cal}} + \frac{\sigma_{data}^2}{n_{data}} + \sigma_{reg}} \right) \quad (3)$$

To account for changing systematic errors, misalignment errors and remaining errors in the total error budget, we define an empirical registration term to the level of detection estimate as in Lague et al. (2013) and Fey and Wichmann (2017). This is estimated by calculating distancing using the 4D algorithm at stable target and assumed stable locations on the slope. The standard deviation of the distance measurement is then used for the registration term in the level of detection calculation.

In our change detection design, positional uncertainties between the reference point cloud and the true slope surface are not propagated, as all subsequent scans are registered and compared to the reference scan. For this reason, we do not include a positional uncertainty term as in Fey and Wichmann (2017). Generally, for landslide and rockfall early warning monitoring, the absolute accuracy of the distance measurement is of less importance than being able to confidently detect if displacement or if changes in displacement have occurred.

25

### 3.2.6 Data Visualization

We designed the monitoring system so that both RAW and processed point clouds can be visualized in the field or through a remote connection to the the field computer. This was done to avoid large data transfer to a remote server and so results could be directly visualized and interpreted in the field. To support visualization and interpretation, we store point clouds with mapped raw distances, filtered distances and confidence intervals in point cloud libraries binary pcd format. Because all distances are mapped onto the reference point cloud, we also stored all of the measured distances and confidence intervals

over time in a database mapped to the index points of the reference point cloud. This allows time series of distances and confidence to be extracted by point picking on the slope. We programmed a basic point cloud visualizer using the PCL's visualization class (Rusu and Cousins, 2011). The visualizer can be initiated after each point cloud is processed. We used Cloud Compare (Cloud Compare, 2016) to visualize and create some of the figures in this manuscript.

### 5 3.3 Monitoring Experiment

Our TLS system was set up to monitor the frontal zone of the landslide outlined in Fig. 1. This area is 200 m wide and 350 m high and is between 700 to 1200 m away from Cerema's monitoring Centre on the opposite side of the river valley. Prior to our monitoring experiment, we sent the Optech TLS system for manufacturer maintenance and calibration to limit systematic errors. We intended to detect displacement of the landslide, pre-failure displacement to discrete rockfall events emanating from the frontal zone and talus processes. We opted for a 30-minute data acquisition interval so that pre-failure deformation for discrete rockfall events could be recognized and to reduce event superposition. We collected a total of 1832 scans during from 20 April to 30 May 2016. Scanning was interrupted on 21 May as the scanner was moved and replaced for a period of one day.

We specified scanning parameters to obtain a mean point spacing of 0.08 m at the slope. We rejected point clouds acquired with less than 500 000 points. In the 4D change detection algorithm, we used a 3-m radius to calculate local surface normals, five times the mean point spacing ( $\sim 0.4$  m) as neighbourhood search radius and eight calibration and  $T_{\text{step}}$  clouds (4-hour period) for temporal filtering. We use these parameters because we expect to detect blocks that are much larger than the neighbourhood radius and with a lower limit of detectable displacement occurring over a longer period than the  $T_{\text{step}}$ . Parameters specific to the point cloud pre-treatment and registration were empirically derived for our case study and can be found in the supplementary material.

We compiled temperature, pressure, and relative humidity data at 30 min interval from a weather station located near Grenoble. Since the weather station was not located directly at our site, slight differences in local conditions are likely to have occurred.

## 4 Results

The system successfully ran automatically in near real-time for our study period. Data collection of the slope took approximately 7 minutes followed by 3 minutes of processing time. The Optech scanner collects data from bottom to top, meaning a delay of 3 to 10 minutes (top to bottom) occurred between data collection and visualization of the data. We moved and replaced the scanner once during the study and the processing algorithm successfully resumed operation despite the position change. In the following section we assess the data quality as a function of weather and atmospheric conditions (Sect. 4.1), the measurement and uncertainty over space and time (Sect. 4.2), and the observed slope processes (Sect. 4.3).



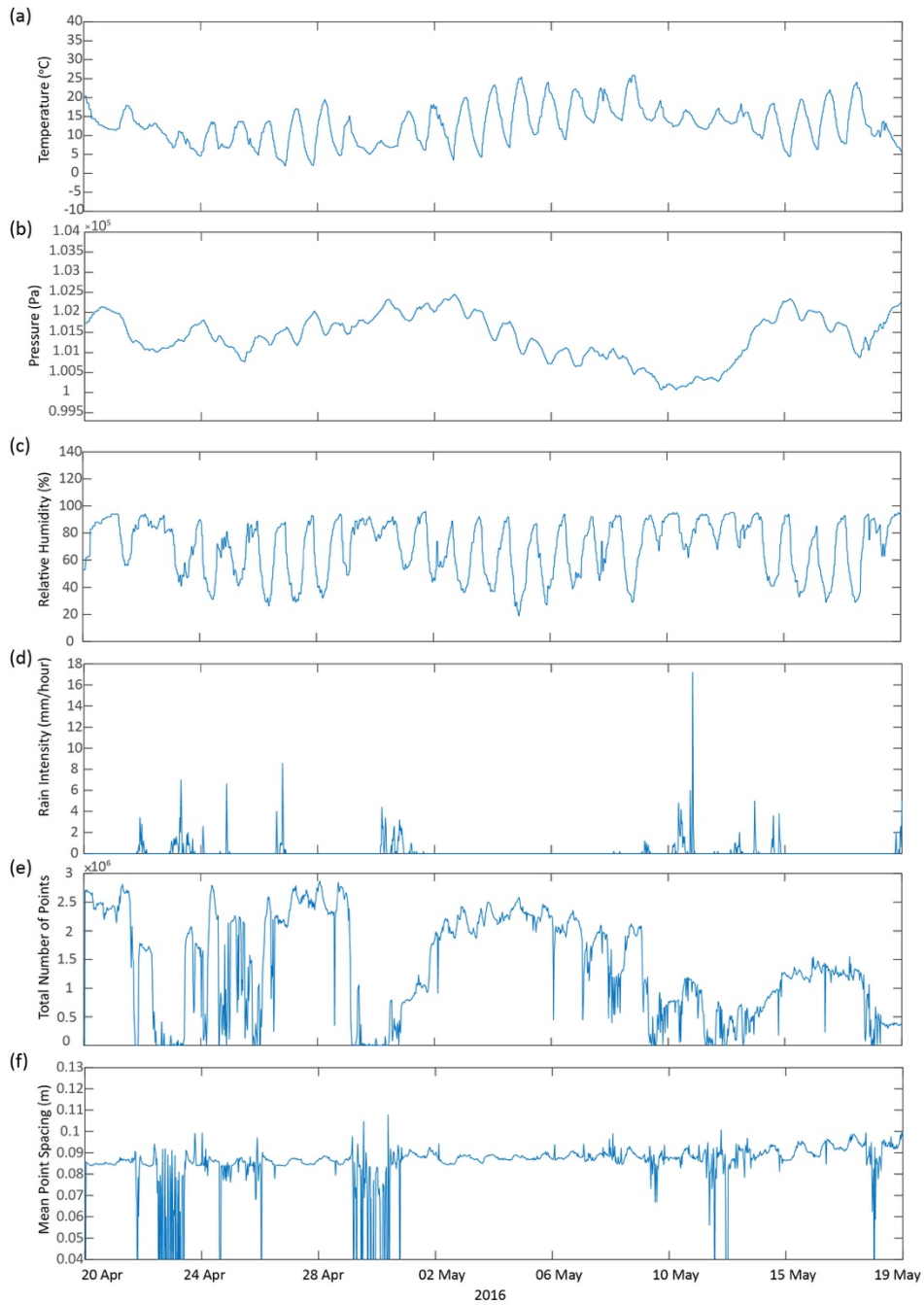
## 4.1 Data Quality

Environmental influences had a noticeable effect on the data quality collected with our system. Because our test occurred during the spring season, the system scanned through a variety of atmospheric conditions. Recorded temperatures for the period ranged from 1.5°C to 28.5°C, relative humidity ranged from 19 to 96%, and pressure ranged from 100 070 to 102 450 Pa. These variables also fluctuated **daily** as can be seen in Fig. 7 (a), (b) and (c). These daily fluctuations are also reflected in the total number of points collected (Fig. 7, (e)) and the mean point spacing (Fig. 7, (f)). The daily cycles in temperature, pressure and humidity had a small influence on the data quality, accounting for daily differences of 200 to 300 thousand points and differences of mean point spacing ranging from 5 to 10 mm.

10 Rainfall had a much more significant impact on the data quality than temperature, humidity and pressure. **Several** rainfall events occurred during the monitoring period (Fig. 7, (d)). The most intense rain occurred on 11 May, reaching an intensity of 17 mm per hour. The effect of these rainfall events can be seen by comparing the intensity of rainfall versus the total number of points and mean point spacing. Independent of intensity, all recorded rainfall affected the number of points collected on the slope surface to the point where we rejected the point cloud from further analysis, i.e. having less than 500

15 000 points. Following rain events, the time it took the total number of points to recover to pre-rainfall levels appears to depend on the intensity and duration of the rain period. This is likely the result of reduced reflectivity of the slope **after rainfall**. The mean point spacing, measured using the total number of slope points returned, recovered more quickly after rain events. This is because of the differing reflective properties of the slope material. Vertical rock slope material returned a similar amount of points before and after rain, thus having similar point spacing, whereas areas of talus and lower reflectivity

20 areas did not register any returns. This effect can also be explained by the vertical portions of the slope drying faster than the lower angle portions. **The quality of data acquired by other TLS systems with varying wavelengths may be less influenced by rainfall than the Optech ILRIS scanner utilized in this study.**

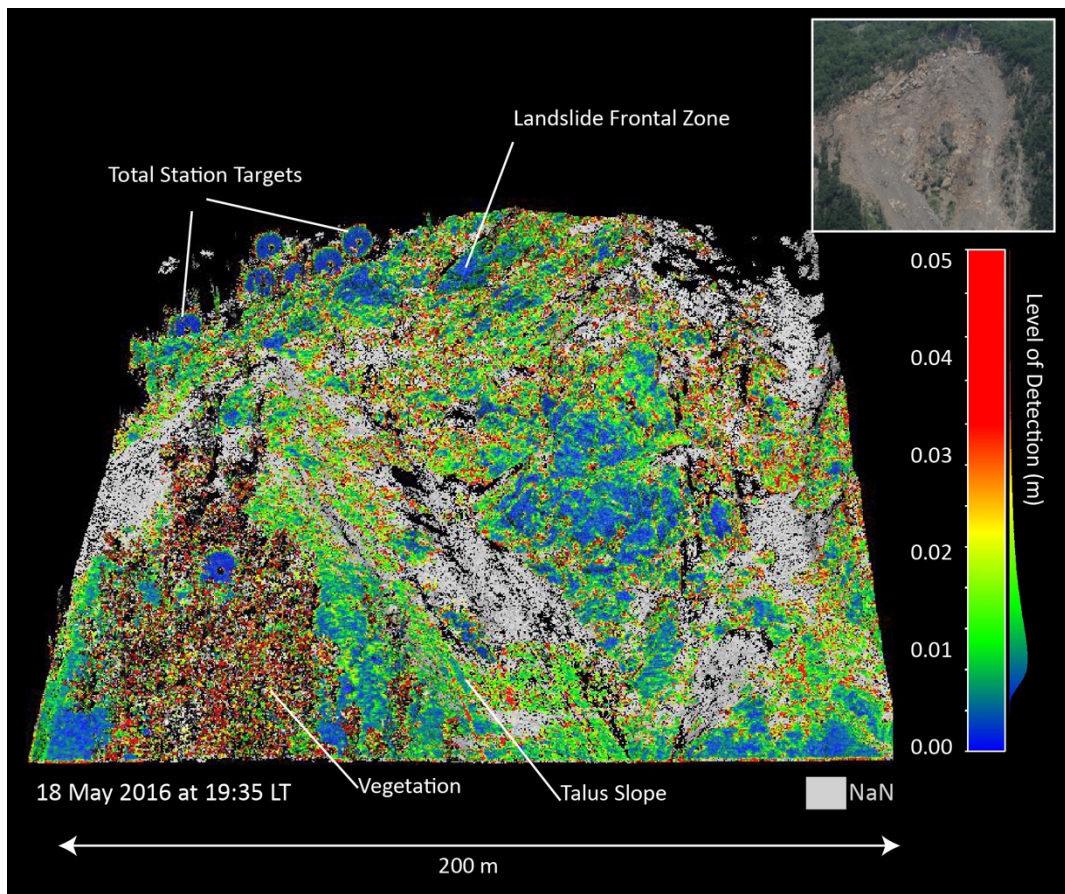


**Figure 7: Graphs showing time series of environmental variables and of data quality. Comparison of temperature (a), pressure (b), relative humidity (c), rain intensity (d), total number of points (e) and mean point spacing of the total number of points (f) from 20 April to 20 May 2016.**

## 4.2 Assessment of Uncertainty

Our data processing pipeline was designed to reduce errors. The statistical outlier remover and the pass-through filter applied during the pre-treatment step successfully removed multipath errors, outlier points and areas of low point density. The filters also removed some of the vegetation, leaving repeated areas of vegetation with high point density (e.g. tree trunks and  
5 branches).

We estimated distance uncertainty for every distance measure in every scan in terms of the **level of detection**. Figure 8 illustrates **an example** of the **level of detection** mapped on to the point cloud for data collected on 18 May 2016 at 19:35 LT. **The level of detection** varies for different areas of the slope and varies for different scan dates. **Detection levels of 10 to 11**  
10 **mm** was achieved for vertical areas of the outcrop and the total station reflectors whereas areas of outcrop with faces at a lower incident angle to the incoming laser pulse range from **15 to 20 mm**. Furthermore, **detection levels** of areas of talus slope and areas affected by vegetation ranged from **14 to 30 mm**. **The empirical registration error term varied from 3 mm to 15 mm** throughout the time series. **Higher values of registration error and overall level of detection occurred during periods with adverse atmospheric conditions and during periods with diminished total returns. The diminished returns are likely**  
15 **contributing to a slightly different overall alignment and increase the uncertainty due to surface roughness. The level of detection over time as well as comparison with independent measurements** are also presented **alongside** change detection results in Sect. 4.3 Fig. 11.



**Figure 8:** Variability of the spatio-temporal confidence interval in space for the most active area of the slope (Figure 1). Level of detection mapped on to point clouds collected on the 18 May 2016.

### 5 4.3 Observed Slope Processes

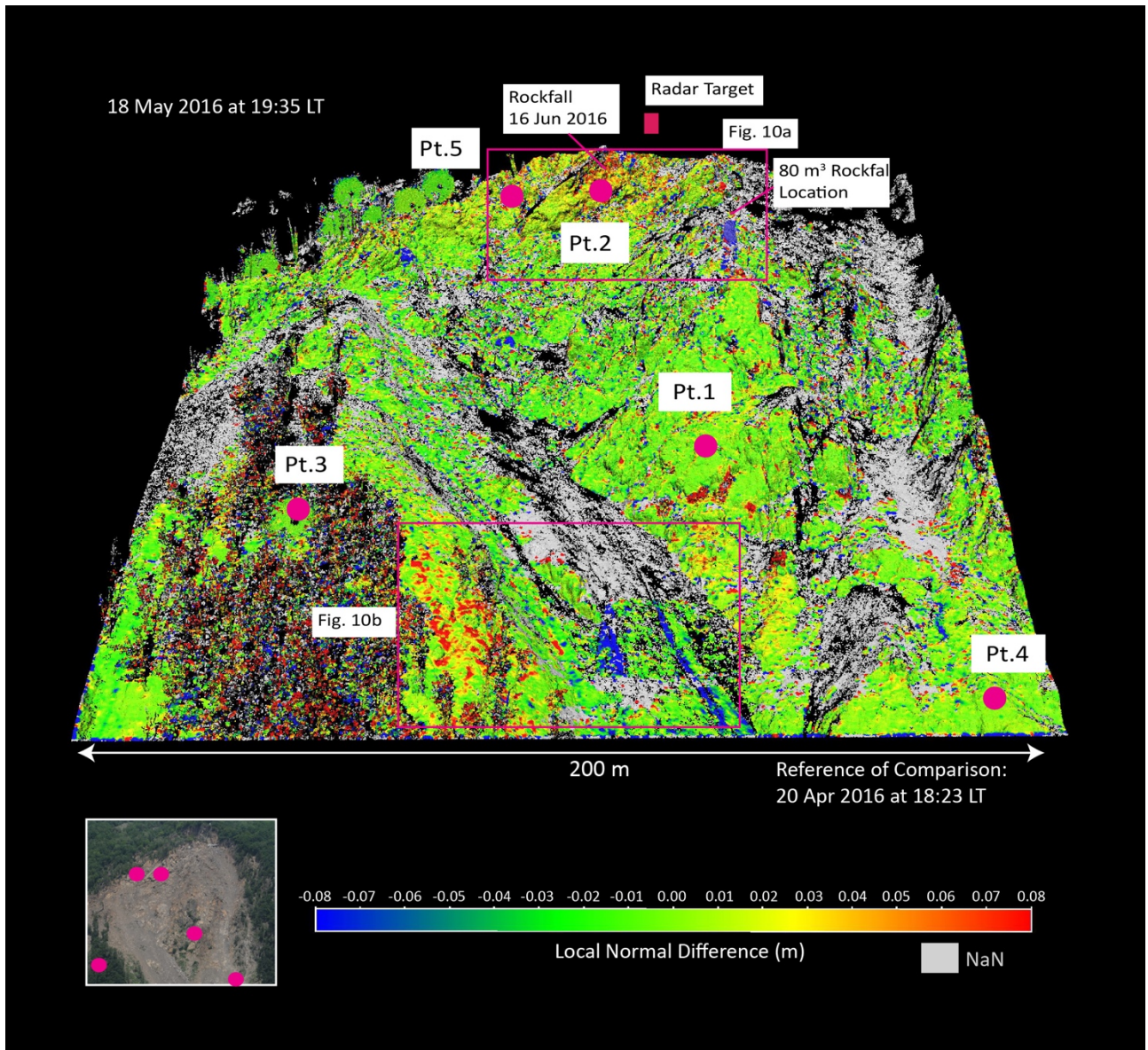
During the testing period, we observed several slope processes including the flux of talus, movement of the rockslide and rockfalls coming from the rockslide surface. Figure 9 presents a change detection summary with five points of interest, the location of an 80 m<sup>3</sup> rockfall event and the location of a second significant rockfall event that was detected by the  
 10 microseismic system after the monitoring period on 16 June 2016. Point 1 is located on the lower frontal zone of the landslide, Point 2 is located in the western half of the upper frontal zone, Point 3 is in the lower part of the large landslide located on a total station reflector, Point 4 is a talus area east of the large landslide and Point 5 is located on the frontal zone of the landslide. For each of these points of interest, time series of distance and **levels of detection** are presented in Fig. 11.

Points 1, 3 and 4 show non-detectable levels of change during the monitoring period, which is consistent with monitoring data of the landslide. For Point 3, total station measurements during the time interval are presented alongside the TLS displacement results and deviations are less than the calculated levels of detection. Periods of wet slope can be identified in the time series data by high level of detection values and inconsistent distance data, i.e. between 11 May to 16 May, 2016.

5 Periods of rain have affected these five areas by different amounts. Point 4 on the talus slope is most affected by the wet slope and Point 3 located on the total station reflector is least affected. Point 2 represents the landslide frontal zone displacement at a location where a second significant rockfall occurred on 16 June 2016. This rockfall was detected by the seismic network after the TLS monitoring period. Prior to failure, a constant rate of displacement was observed reaching a maximum displacement of 0.11 m. The displacement time series shows similar characteristics to a nearby radar station,

10 which recorded a 0.05 m displacement over this interval. The radar target is located just outside of the TLS scan area and the physical separation of the two measurement points is likely the cause the maximum measured displacement discrepancy. Point 5 represents the displacement of the landslide frontal zone reaching a maximum of 0.025 m. This is in agreement with extensometer A16 which recorded a displacement of 0.023 m during the same period.

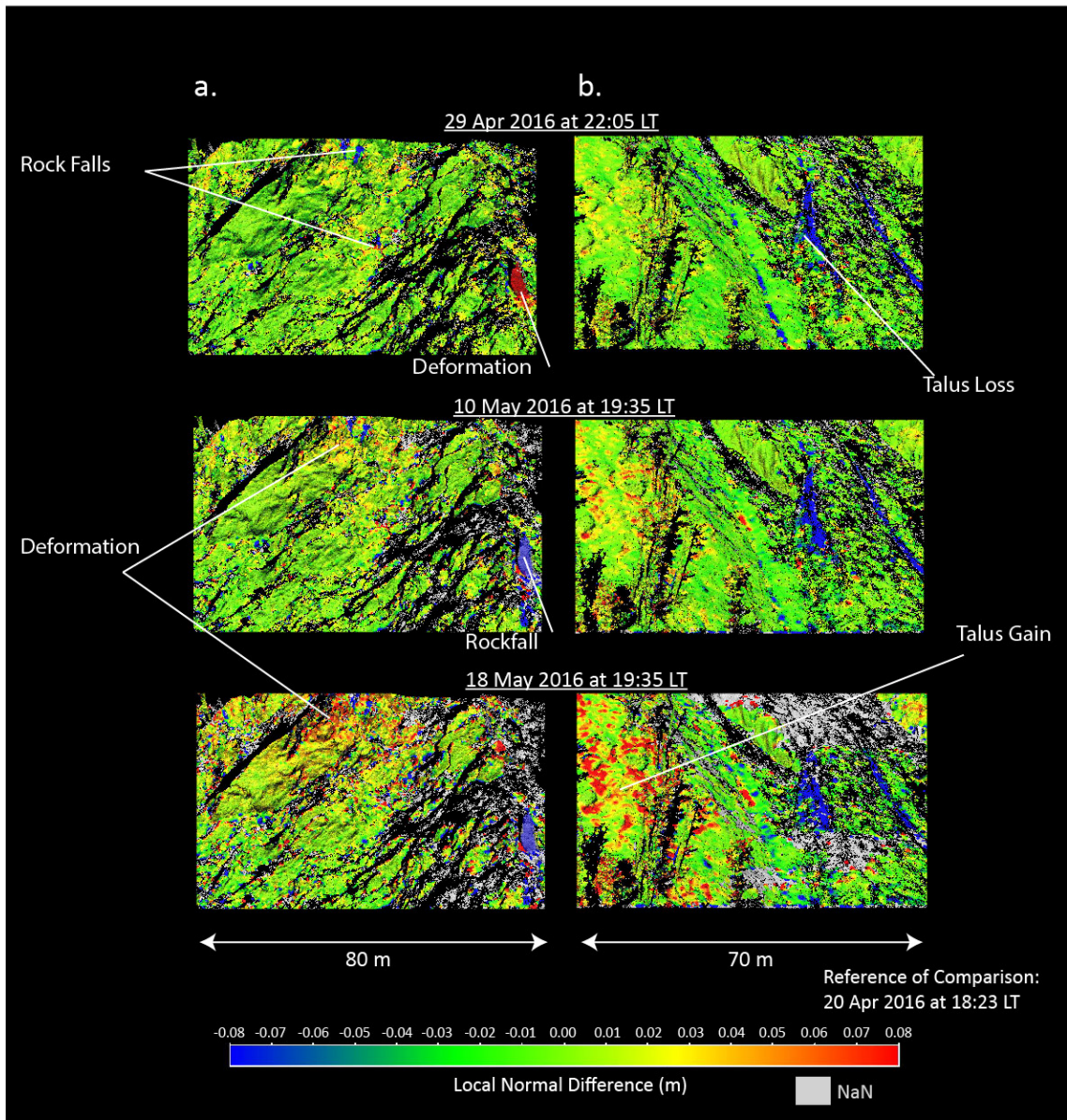
15



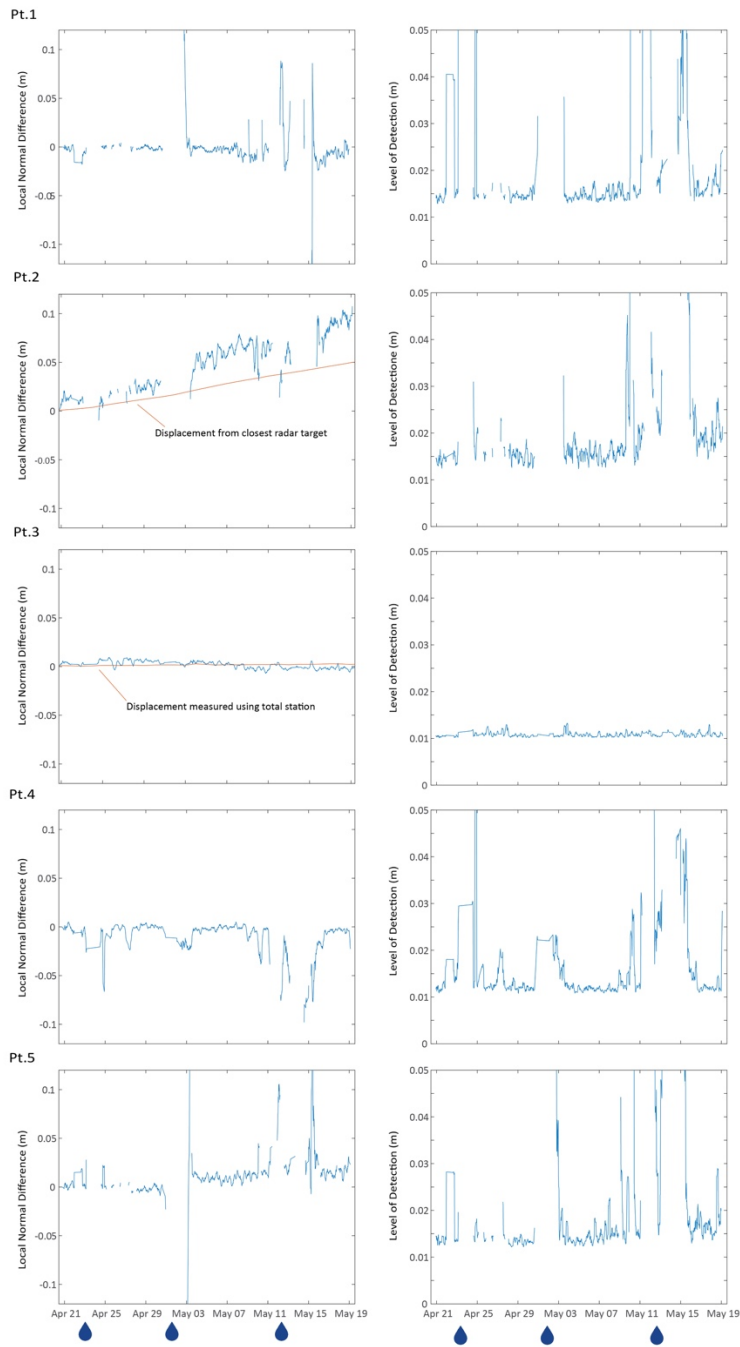
**Figure 9:** Change detection results for 18 May 2016 at 22:35 LT relative to a reference scan from 20 April 2016 at 18:23 LT. Five points of interest are marked and used to extract distance time series data and the location of two significant rockfall events are marked. Point 1 represents stable rock surface, Point 2 is located on the rock surface at the location of the rockfall on 16 Jun 2016, Point 3 is located on a stable reflective target, Point 4 is located on debris slope and Point 5 is located on the frontal zone of the landslide.

5

10



**Figure 10: Change Detection results for three sub areas identified in Figure 9 showing the flux of talus, deformation of the landslide and rockfalls.**



**Figure 11: Distance and associated level of detection time series for points of interest 1 to 5 marked on Figure 8. Point 1, 3, 4 represent areas of the slope with non-detectable change. Point 2 represents the pre-failure deformation of a rockfall that occurred on the 16 June 2016 and Point 5 represents the deformation of the frontal zone of the landslide. Point 2 includes a comparison with measurements taken from the closest reference target at Point 3 includes a comparison with measurements taken with a total station for the same target area.**

5



Apart from monitoring the displacement of the main landslide body, the system captured pre-failure deformation for specific rockfall events (Fig. 9 and 10). We identified and measured pre-failure deformation prior to an 80 m<sup>3</sup> rockfall in the upper section of the monitored area. Figure 9 and 10 shows the location of the rockfall and Figure 12 illustrates the deformation time series for three deforming points and one stable reference point. Data gaps in the time series represent time where point clouds were rejected due to insufficient points, *i.e.* during rain events. The rockfall was preceded by 6 days of deformation appearing to be triggered by the intense rain event on 23 and 24 April 2016 (39 mm in 31 hours). After the rain event, there was significant acceleration of the block over a 12-hour period (with average velocities between 200 mm/day and 400 mm/day, from the bottom to the top of the block) followed by a constant rate of deformation (with average velocities between 15 mm/day and 30 mm/day, from the bottom to the top of the block, a relative decrease of 90 %). On 29 April 2016 a second acceleration (with average velocities between 150 mm/day and 260 mm/day, from the bottom to the top of the block) began, ending in sudden failure of the block on 30 April 2016 at 20:25 after a new rain event (12 mm in 6 hours). The exact time of the event was extracted from the microseismic system record of the rockfall event. The maximum total deformation of the block reached 0.30 m (Point 3) to 0.45 m (Point 1) prior to block detachment. The movement of the three points illustrated in Figure 12 describes a local block toppling failure, characterized by larger deformation at the top of the unstable block and smaller at the bottom.

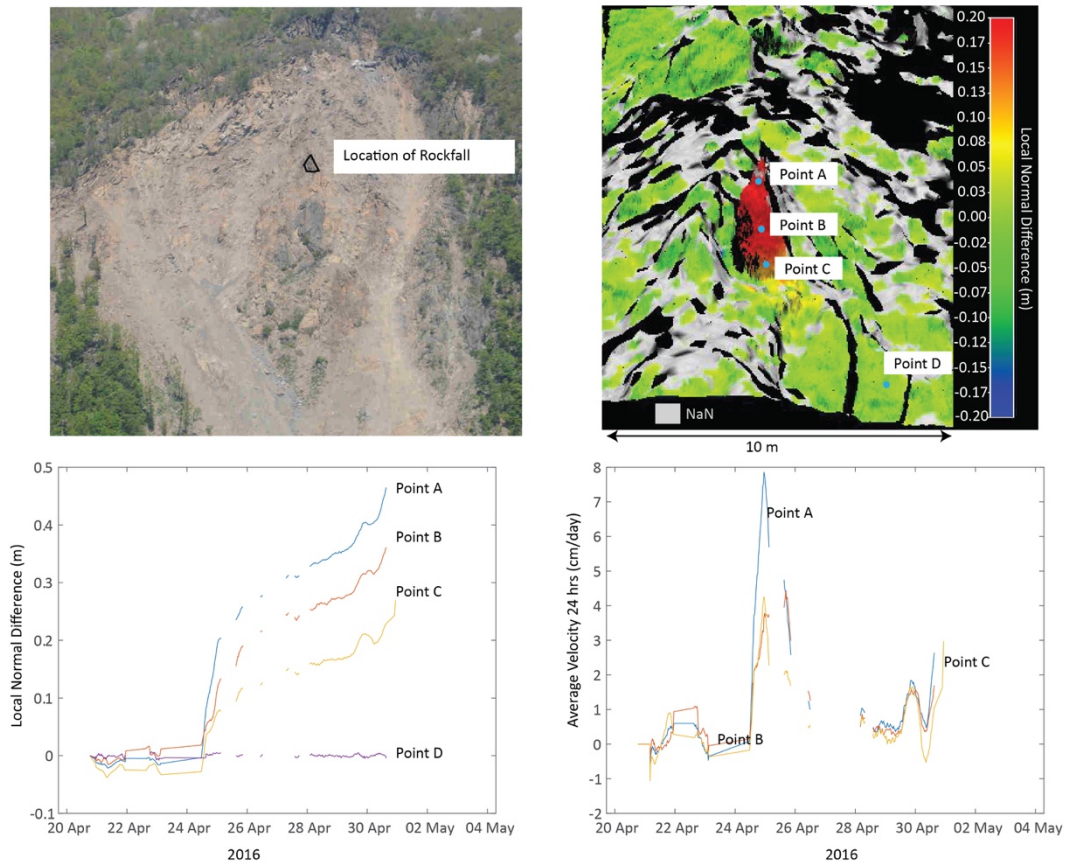


Figure 12: Pre-failure deformation of  $80 \text{ m}^3$  rockfall. Top left, location of  $80 \text{ m}^3$  rockfall. Top right, point cloud with mapped change showing deformation of the rock block prior to failure and 4 points used to plot time series data. **Points A, B and C are located on the deforming area and Point D is located on an adjacent stable area of slope.** Bottom left, deformation time series (cumulative values) of 3 points on the surface of the deforming rock block and a nearby stable point. Bottom right, average 24-hour velocity for Points A, B and C.

## 5 Discussion

We presented an automatic processing TLS monitoring system which we have deployed at an active landslide site. The system allows the study of earth surface processes at unprecedented levels of temporal detail and opens the door for studying processes at the super-temporal level (multiple acquisitions per day) for long time intervals. The system is well suited for landslide and rock slope deformation monitoring and early warning systems and can also be adapted to study many other earth surface processes. The automated scanning and automatic processing requires little input from users and provides processed results in near real-time. This is of great benefit to decision makers in early warning scenarios where time is an important resource.

15

For early warning monitoring the system can be a cost effective, small and portable alternative to GB-InSAR systems. It also offers significant spatial and temporal detail of other slope processes allowing the calculation of volumes and vector deformation (Abellán et al., 2009; Oppikofer et al., 2009). TLS systems also have the benefit of being easy to transport and set up. For temporary early warning monitoring scenarios, such as remediation of a rockslide along a transportation corridor

5 for example, TLS can be set up quickly using a portable power source (generators or batteries) and allow for results to be available directly on site without the need to transfer data to a remote server. This is especially beneficial in remote areas with no communication infrastructure, which is often the case in remote mountainous areas. The scanner can also be moved and resume scanning at a later date, unlike GB-InSAR which suffers from phase decorrelation.

10 We achieved a distance **uncertainty** range of **10 to 11 mm** for rock sections of the slope during favourable weather conditions, an improvement compared to an **uncertainty** of **25 mm** achieved by Kasperski et al. (2010) at this study site using a Riegl LMS Z420i TLS. We did not achieve theoretical improvement in our ability to detect change using 4D filtering as discussed in Kromer et al. (2015). The critical factor is **changing** systematic errors **over time** caused by a combination of influences such as **atmospheric conditions, internal heating of the scanner and misalignment errors. Misalignment errors**

15 **varied over time and were observed to be higher where total number of returns were reduced due to poor atmospheric conditions. Improvements to the detection levels achieved here could be reached by using scanners with wavelengths less affected by atmospheric conditions and by using a TLS system with a built-in scanner temperature correction. A survey design where a scanner is closer to target of interest would also improve detection levels. Furthermore, alternative registration strategies may offer an improvement to the registration error term, for example the stable area detection**

20 **registration algorithm proposed by Wujanz et al. (2016).** For the observed phenomena at this site, however, a mm level of detection was not necessary over the 30 min intra-scan interval. **The observed pre-failure deformation for the discrete rockfall event, for example, exhibited cm levels of displacement prior to failure and the displacement of the landslide was in the cm range over the studies time interval.**

25 Atmospheric conditions including rain and **changing surface reflectivity levels** had a significant impact on the quality of data collected using the **Optech long range TLS with a 1064 nm wavelength**. At this study site, the missing data points caused by rain did not significantly affect our interpretation of slope processes. Displacement of the landslide occurred over a longer temporal scale and small data gaps had a low impact on our ability to interpret slope deformations. Furthermore, displacement of the landslide tended to be delayed after rainfall. This **effect** has been observed by previous studies at this site

30 (Helmstetter and Garambois, 2010; Vallet et al., 2015) and is believed to be due to the time it takes water to infiltrate and build pressure in the subsurface. For the case of the pre-failure deformation of the rockfall, the missed data points also did not affect the interpretation of the pre-failure stage.

This system was effective in monitoring the deformation of a deep seated landslide automatically over a **six week** period of time. The detected deformation pattern in this case, greater movement at the top of the frontal zone compared to the bottom, is in agreement with the hypothesis of a toppling failure mechanism towards the valley (Kasperski et al., 2010b). The system was also successful in detecting pre-failure deformation of an 80 m<sup>3</sup> rockfall event and of a significant rockfall event that occurred after the monitoring period on 16 June 2016 from the frontal zone. The former rockfall appears to have been triggered by the rain episode from 22 April to 24 April 2016 and showed multiple acceleration phases before collapse. The period over which deformation occurred was only 6 days and may not have been captured using multi-temporal monitoring. A potential limitation of long term monitoring with TLS is the limited operational life of the laser, which is not reported by the manufacturers of laser scanners.

10

We showed that this system can be beneficial for long term monitoring of a landslide and for detecting the pre-failure stage of rockfalls. Although this study was applied to a landslide site, the system developed herein **can be adapted for wider** applications for earth and ecological sciences, as discussed in Eitler *et al.* (2016). This system will allow the understanding, modelling and prediction of previously imperceptible earth changes.

## 15 **6 Conclusions**

In this study, we presented a near real-time terrestrial laser scanner monitoring system that was tested on an active landslide in the French Alps. The system was designed to collect data in an automated fashion and process data automatically in near real-time. The system was tested for a 6-week period and captured flux of talus, displacement of the landslide, pre-failure deformation of rockfalls including 6 days of pre-failure deformation prior to an 80 m<sup>3</sup> event. We were also able to assess the effect of environmental influences on data quality obtained **with our scanner** and defined a **spatio-temporal confidence interval to estimate the variability of point cloud distance measurement uncertainty in space and time.**

We found that the TLS system can be an effective tool in monitoring landslides and rockfall processes despite some of its limitations. These include missing points due to poor atmospheric conditions and **changing slope reflectivity** levels. At this study site, we observed slope deformation occurring over a longer period compared to the duration of the rain events and that there appeared to be a delay between the rain event and onset of increased slope deformation. For early warning monitoring of landslides, we showed that the system can be a suitable alternative to GB-InSAR deformation monitoring. The benefit of using this TLS system for landslide monitoring is that it can be easily transported, set up quickly, a portable power source can be used, data can be processed in remote areas in the field automatically and results would be made available in near real-time for on-site decision makers. Most importantly, we showed that TLS can be an effective system for long term high temporal resolution acquisitions. The system solves the problem of manually managing and processing large amounts of TLS data and opens the door to future study of earth processes at high levels of temporal detail. Future use of high temporal

TLS monitoring of earth surface processes will greatly increase our understanding of previously imperceptible levels of earth change.

## Acknowledgements

We would like to acknowledge the Centre for studies and expertise on Risks, Environment, Mobility, and Urban and Country (Cerema) for supporting the research. The first author would like to acknowledge support from the Natural Sciences and Engineering Research Council of Canada (NSERC) through the post-graduate scholarship program. The second author would like to acknowledge the support received from the H2020 Program of the European Commission under the Marie Skłodowska-Curie Individual Fellowships [MSCA-IF-2015-705215]. We would also like to acknowledge Dr. Nick Rosser for helpful advice on atmospheric correction.

10

## References

Abellán, A., Calvet, J., Vilaplana, J. M. and Blanchard, J.: Detection and spatial prediction of rockfalls by means of terrestrial laser scanner monitoring, *Geomorphology*, 119(3-4), 162–171, doi:10.1016/j.geomorph.2010.03.016, 2010.

15 **Abellán, A., Carrea, D., Jaboyedoff, M., Royan, M.J.: LiDAR point cloud comparison: evaluation of denoising techniques using 3D moving windows. In EGU General Assembly - Geophysical Research Abstracts, Vol. 15, p. 11884, 2013.**

Abellán, A., Oppikofer, T., Jaboyedoff, M., Rosser, N. J., Lim, M. and Lato, M. J.: Terrestrial laser scanning of rock slope instabilities, *Earth Surf. Process. Landforms*, 39(1), 80–97, doi:10.1002/esp.3493, 2014.

20 Abellán, A., Jaboyedoff, M., Oppikofer, T., Vilaplana, J.M.: Detection of millimetric deformation using a terrestrial laser scanner: experiment and application to a rockfall event. *Natural Hazard and Earth System Science* 9, 365–372. DOI: 10.5194/nhess-9-365-2009, 2009.

Adams, M., Gleirscher, E. and Gigele, T.: Automated Terrestrial Laser Scanner measurements of small-scale snow avalanches, *Proc. Intern. Snow Science Workshop Grenoble-Chamonix MontBlanc*, 2013.

Cloud Compare v.2.8 [Computer Software], 2016.

25 The MathWorks Inc. Matlab R2016b [Computer Software], 2016.

Avian, M., Kellerer-Pirklbauer, A. and Bauer, A.: LiDAR for monitoring mass movements in permafrost environments at the cirque Hinteres Langtal, Austria, between 2000 and 2008, *Natural Hazards and Earth System Science*, 9(4), 1087–1094, doi:10.5194/nhess-9-1087-2009, 2009.

30 Barbarella, M.: Monitoring of large landslides by Terrestrial Laser Scanning techniques: field data collection and processing, *EuJRS*, 126–151, doi:10.5721/EuJRS20134608, 2013.

Baudement, C., Bertrand, C., Guglielmi, Y., Viseur, S., Vallet, A. and Cappa, F.: Quantification de la dégradation mécanique et chimique d'un versant instable : approche géologique, hydromécanique et hydrochimique Etude du versant instable de

- Séchilienne, Isère (38), JAG-3èmes journées Aléas Gravitaires, 1–6, 2013.
- Bremer, M. and Sass, O.: Combining airborne and terrestrial laser scanning for quantifying erosion and deposition by a debris flow event, *Geomorphology*, 138(1), 49–60, doi:10.1016/j.geomorph.2011.08.024, 2012.
- 5 Chanut, M.-A., Dubois, L., Duranthon, J.-P. and Durville, J.-L.: Mouvement de versant de Séchilienne : relations entre précipitations et déplacements , pp. 14–16, Tunisie. 2013.
- Chen, Y. and Medioni, G.: Object modelling by registration of multiple range images, *Image and Vision Computing*, 10(3), 145–155, doi:10.1016/0262-8856(92)90066-C, 1992.
- Ciddor, P. E.: Refractive index of air: new equations for the visible and near infrared, *Appl Opt*, 35(9), 1566–1573, doi:10.1364/AO.35.001566, 1996.
- 10 Corominas, J., van Westen, C., Frattini, P., Cascini, L., Malet, J. P., Fotopoulou, S., Catani, F., Van Den Eeckhaut, M., Mavrouli, O., Agliardi, F., Pitilakis, K., Winter, M. G., Pastor, M., Ferlisi, S., Tofani, V., Hervás, J. and Smith, J. T.: Recommendations for the quantitative analysis of landslide risk, *Bull Eng Geol Environ*, 73(2), 209–263, doi:10.1007/s10064-013-0538-8, 2014.
- 15 Dewitte, O., Jasselette, J. C., Cornet, Y., Van Den Eeckhaut, M., Collignon, A., Poesen, J. and Demoulin, A.: Tracking landslide displacements by multi-temporal DTMs: A combined aerial stereophotogrammetric and LIDAR approach in western Belgium, *Engineering Geology*, 99(1-2), 11–22, doi:10.1016/j.enggeo.2008.02.006, 2008.
- Dubois, L., chanut, M.-A. and Duranthon, J.-P.: Amélioration continue des dispositifs d'auscultation et de surveillance intégrés dans le suivi du versant instable des Ruines de Séchilienne, *Géologue*, (183), 50–55, 2014.
- 20 Dunner, C., Klein, E. and Bigarre, P.: Monitoring multi-paramètres du mouvement de versant des Ruines de Séchilienne (Isère, 38), Journées “Aléa gravitaire”(JAG 2011), 2011.
- Duranthon, J. P.: Le mouvement de versant rocheux de grande ampleur des Ruines de Séchilienne–Surveillance Instrumentation, Journées Nationales de Géotechnique et Géologie de l'ingénieur (JNGG), 2006.
- 25 Eitel, J. U. H., Höfle, B., Vierling, L. A., Abellán, A., Asner, G. P., Deems, J. S., Glennie, C. L., Joerg, P. C., LeWinter, A. L., Magney, T. S., Mandlbürger, G., Morton, D. C., Müller, J. and Vierling, K. T.: Beyond 3-D: The new spectrum of lidar applications for earth and ecological sciences, *Remote Sensing of Environment*, 186, 372–392, doi:10.1016/j.rse.2016.08.018, 2016.
- Eitel, J. U. H., Vierling, L. A. and Magney, T. S.: A lightweight, low cost autonomously operating terrestrial laser scanner for quantifying and monitoring ecosystem structural dynamics, *Agricultural and Forest Meteorology*, 180, 86–96, doi:10.1016/j.agrformet.2013.05.012, 2013.
- 30 Evrard, H., T. Gouin, A. Benoit, and J.-P. Duranthon Séchilienne: Risques majeurs d'écroulements en masse: Point sur la surveillance du site, *Bull. Liaison Lab. Ponts Chaussees*, 165, 7–16, 1990.
- Fey, C. and Wichmann, V : Long-range terrestrial laser scanning for geomorphological change detection in alpine terrain–handling uncertainties, *Earth Surface Processes and Landforms*, doi :10.1002/esp.4022, 2017.
- 35 Fischler, M. A. and Bolles, R. C.: Random sample consensus: a paradigm for model fitting with applications to image analysis and automated cartography, *Communications of the ACM*, 24(6), 381–395, doi:10.1145/358669.358692, 1981.

- Guglielmi, Y., Vengeon, J., Bertrand, C., Mudry, J., Follacci, J. and Giraud, A.: Hydrogeochemistry: an investigation tool to evaluate infiltration into large moving rock masses (case study of La Clapière and Séchilienne alpine landslides), *Bull Eng Geol Environ*, 61(4), 311–324, doi:10.1007/s10064-001-0144-z, 2002.
- 5 Helmstetter, A. and Garambois, S.: Seismic monitoring of Séchilienne rockslide (French Alps): Analysis of seismic signals and their correlation with rainfalls, *Journal of Geophysical Research: Earth Surface*, 115(F3), doi:10.1029/2009JF001532, 2010.
- Holz, D., Ichim, A. E., Tombari, F., Rusu, R. B. and Behnke, S.: Registration with the Point Cloud Library A Modular Framework for Aligning in 3-D , vol. 22, pp. 110–124, The Royal Society. 2015.
- 10 Jaboyedoff, M., Oppikofer, T., Abellán, A., Derron, M.-H., Loye, A., Metzger, R. and Pedrazzini, A.: Use of LIDAR in landslide investigations: a review, *Nat Hazards*, 61(1), 5–28, doi:10.1007/s11069-010-9634-2, 2012.
- Kasperski, J.: Confrontation des données de terrain et de l'imagerie multi-sources pour la compréhension de la dynamique des mouvements de versants, Université Claude Bernard - Lyon I, Lyon, 8 February. 2008.
- 15 Kasperski, J., Delacourt, C., Allemand, P., Potherat, P., Jaud, M. and Varrel, E.: Application of a Terrestrial Laser Scanner (TLS) to the Study of the Séchilienne Landslide (Isère, France), *Remote Sensing 2011*, Vol. 3, Pages 167-184, 2(12), 2785–2802, doi:10.3390/rs122785, 2010a.
- Krautblatter, M. and Dikau, R.: Towards a uniform concept for the comparison and extrapolation of rockwall retreat and rockfall supply, *Geografiska Annaler: Series A, Physical Geography*, 89(1), 21–40, doi:10.1111/j.1468-0459.2007.00305.x, 2007.
- 20 Kromer, R. A., Hutchinson, D. J., Lato, M. J., Gauthier, D. and Edwards, T.: Identifying rock slope failure precursors using LiDAR for transportation corridor hazard management, *Engineering Geology*, 195(C), 93–103, doi:10.1016/j.enggeo.2015.05.012, 2015a.
- Kromer, R., Abellán, A., Hutchinson, D., Lato, M., Edwards, T. and Jaboyedoff, M.: A 4D Filtering and Calibration Technique for Small-Scale Point Cloud Change Detection with a Terrestrial Laser Scanner, *Remote Sensing 2011*, Vol. 3, Pages 167-184, 7(10), 13029–13052, doi:10.3390/rs71013029, 2015b.
- 25 Lague, D., Brodu, N. and Leroux, J.: Accurate 3D comparison of complex topography with terrestrial laser scanner: Application to the Rangitikei canyon (N-Z), *ISPRS Journal of Photogrammetry and Remote Sensing*, 82, 10–26, doi:10.1016/j.isprsjprs.2013.04.009, 2013.
- 30 Lato, M. J., Hutchinson, D. J., Gauthier, D., Edwards, T. and Ondercin, M.: Comparison of ALS, TLS and terrestrial photogrammetry for mapping differential slope change in mountainous terrain, *Can. Geotech. J.*, 140624144734003, doi:10.1139/cgj-2014-0051, 2014.
- Le Roux, O., Jongmans, D., Kasperski, J., Schwartz, S., Potherat, P., Lebruc, V., Lagabrielle, R. and Meric, O.: Deep geophysical investigation of the large Séchilienne landslide (Western Alps, France) and calibration with geological data, *Engineering Geology*, 120(1-4), 18–31, doi:10.1016/j.enggeo.2011.03.004, 2011.
- 35 Levenberg, K.: A method for the solution of certain non-linear problems in least squares, *Quarterly of applied mathematics*, doi:10.2307/43633451, 1944.
- Lichti, D. D. and Licht, M. G.: Experiences with terrestrial laser scanner modelling and accuracy assessment, *Int. Arch. Photogramm. Remote Sens. Spat Inf. Sci.*, doi:10.7202/706354ar, 2006.

- Lichti, D. D., Gordon, S. J. and Tipdecho, T.: Error Models and Propagation in Directly Georeferenced Terrestrial Laser Scanner Networks | Journal of Surveying Engineering | Vol 131, No 4, Journal of surveying engineering, doi:10.1061/jtsued2.2005.131.issue-4;website:website:ascelibrary-site;wgroup:string:Publication, 2005.
- 5 Lim, M., Petley, D. N., Rosser, N. J., Allison, R. J., Long, A. J. and Pybus, D.: Combined Digital Photogrammetry and Time-of-Flight Laser Scanning for Monitoring Cliff Evolution, *Photogrammetric Record*, 20(110), 109–129, doi:10.1111/j.1477-9730.2005.00315.x, 2005.
- Marquardt, D. W.: An algorithm for least-squares estimation of nonlinear parameters, *Journal of the society for Industrial and Applied Mathematics* 11.2,431-441, 1963.
- 10 Metternicht, G., Hurni, L. and Gogu, R.: Remote sensing of landslides: An analysis of the potential contribution to geospatial systems for hazard assessment in mountainous environments, *Remote Sensing of Environment*, 98(2-3), 284–303, doi:10.1016/j.rse.2005.08.004, 2005.
- Milan, D. J., Heritage, G. L. and Hetherington, D.: Application of a 3D laser scanner in the assessment of erosion and deposition volumes and channel change in a proglacial river, *Earth Surf. Process. Landforms*, 32(11), 1657–1674, doi:10.1002/esp.1592, 2007.
- 15 Monserrat, O. and Crosetto, M.: Deformation measurement using terrestrial laser scanning data and least squares 3D surface matching, *ISPRS Journal of Photogrammetry and Remote Sensing*, 63(1), 142–154, doi:10.1016/j.isprsjprs.2007.07.008, 2008.
- Muja, M. and Lowe, D. G.: Fast Approximate Nearest Neighbors with Automatic Algorithm Configuration, *VISAPP*, 2009.
- 20 Oppikofer, T., Jaboyedoff, M. and Keusen, H.-R.: Collapse at the eastern Eiger flank in the Swiss Alps, *Nature Geosci.*, 1(8), 531–535, doi:10.1038/ngeo258, 2008.
- Oppikofer, T., Jaboyedoff, M., Derron, M. H., Blikra, L. and Metzger, R.: Characterization and monitoring of the Åknes rockslide using terrestrial laser scanning, *Natural Hazards and Earth System Science*, 9(3), 1003, doi:10.5194/nhess-9-1003-2009, 2009.
- 25 Orem, C. A. and Pelletier, J. D.: Quantifying the time scale of elevated geomorphic response following wildfires using multi-temporal LiDAR data: An example from the Las Conchas fire, Jemez Mountains, New Mexico, *Geomorphology*, 232, 224–238, doi:10.1016/j.geomorph.2015.01.006, 2015.
- Pothérat, P. and Alfonsi, P.: Les mouvements de versant de Séchilienne (Isère). Prise en compte de l'héritage structural pour leur simulation numérique, *Revue française de géotechnique*, 95-96, 2001.
- 30 Rosser, N. J., Petley, D. N., Lim, M., Dunning, S. A. and Allison, R. J.: Terrestrial laser scanning for monitoring the process of hard rock coastal cliff erosion, *Quarterly Journal of Engineering Geology and Hydrogeology*, 38(4), 363–375, doi:10.1144/1470-9236/05-008, 2005.
- Royán, M. J., Abellán, A. and Vilaplana, J. M.: Progressive failure leading to the 3 December 2013 rockfall at Puigcercós scarp (Catalonia, Spain), *Landslides*, doi:10.1007/s10346-015-0573-6, 2015.
- 35 Royán, M. J., Abellán, A., Jaboyedoff, M., Vilaplana, J. M. and Calvet, J.: Spatio-temporal analysis of rockfall pre-failure deformation using Terrestrial LiDAR, *Landslides*, 11(4), 697–709, doi:10.1007/s10346-013-0442-0, 2013.
- Rusu, R. B. and Cousins, S.: 3D is here: Point Cloud Library (PCL), pp. 1–4, *IEEE*. 2011.



- Rusu R.B., Blodow N. and Beetz M.: Fast point feature histograms (FPFH) for 3D registration, in IEEE International Conference on Robotics and Automation (ICRA), pp. 1848–1853, 2009.
- 5 Schürch, P., Densmore, A. L., Rosser, N. J., Lim, M. and McArdeell, B. W.: Detection of surface change in complex topography using terrestrial laser scanning: application to the Illgraben debris-flow channel, *Earth Surf. Process. Landforms*, 36(14), 1847–1859, doi:10.1002/esp.2206, 2011.
- Teledyne Optech : **ILRIS** Terrestrial Laser Scanner [Internet]. Available from: <http://www.teledyneoptech.com/wp-content/uploads/ILRIS-Spec-Sheet-140730-WEB.pdf>, 2014a.
- Teledyne Optech : Optech ILRIS Command Line User Manual, 2014b.
- 10 Teza, G., Galgaro, A., Zaltron, N. and Genevois, R.: Terrestrial laser scanner to detect landslide displacement fields: a new approach, *International Journal of Remote Sensing*, 28(16), 3425–3446, doi:10.1080/01431160601024234, 2007.
- Travelletti, J., Oppikofer, T. and Delacourt, C.: Monitoring landslide displacements during a controlled rain experiment using a long-range terrestrial laser scanning (TLS), *International Archives of Photogrammetry and Remote Sensing*, 2008.
- 15 Vallet, A., Charlier, J. B., Fabbri, O., Bertrand, C., Carry, N. and Mudry, J.: Functioning and precipitation-displacement modelling of rainfall-induced deep-seated landslides subject to creep deformation, *Landslides*, 13(4), 653–670, doi:10.1007/s10346-015-0592-3, 2015.
- Vulliez, C.: Apports des méthodes d’imagerie 3D pour la caractérisation et le monitoring du glissement rocheux de Séchilienne (Vallée de la Romanche, Isère, France), pp 1–123. Lausanne, 12 February. 2016.
- 20 Wang, C.-K. and Lu, Y.-Y.: Potential of ILRIS3D Intensity Data for Planar Surfaces Segmentation, *Sensors*, 9(7), 5770–5782, doi:10.3390/s90705770, 2009.
- Wujanz, D., Krueger, D., and Neitzel, F.: Identification of Stable Areas in Unreferenced Laser Scans for Deformation Measurement, *The Photogrammetric Record*, 31(155), 261-280, 2016.**
- Zhong, Y.: Intrinsic shape signatures: A shape descriptor for 3D object recognition, pp. 689–696, IEEE. 2009.