

Interactive comment on “Unsupervised detection of salt marsh platforms: a topographic method” by Guillaume C. H. Goodwin et al.

Guillaume C. H. Goodwin et al.

g.c.h.goodwin@sms.ed.ac.uk

Received and published: 21 December 2017

This response was uploaded in the form of a supplement.

Please also note the supplement to this comment:

<https://www.earth-surf-dynam-discuss.net/esurf-2017-60/esurf-2017-60-AC1-supplement.zip>

Interactive comment on Earth Surf. Dynam. Discuss., <https://doi.org/10.5194/esurf-2017-60, 2017>.

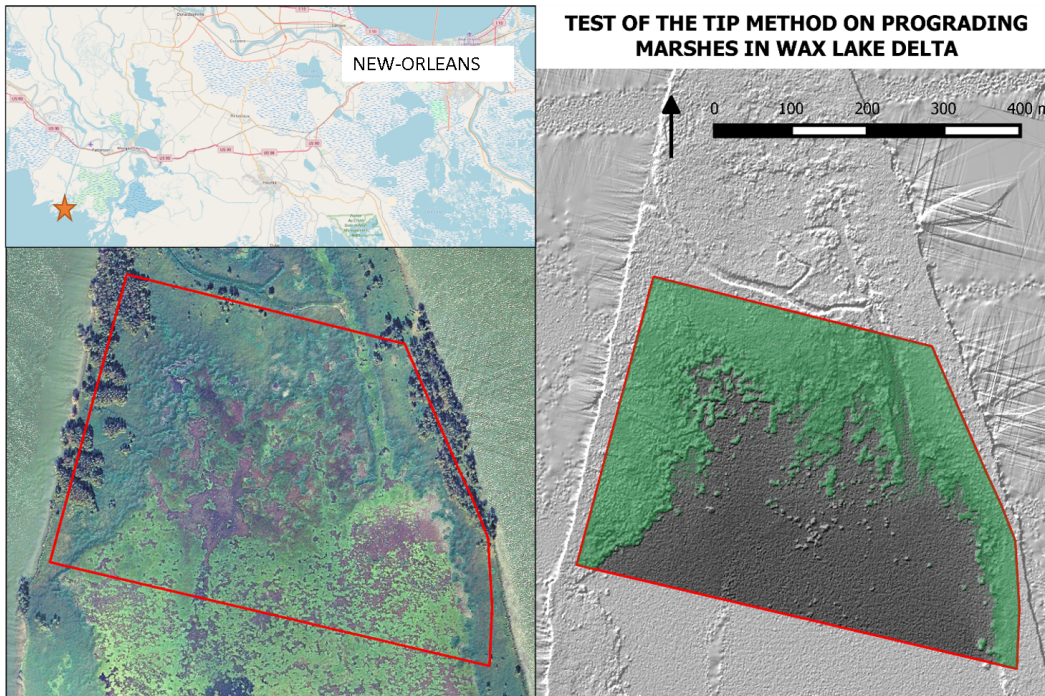


Fig. 1.

Printer-friendly version

Discussion paper



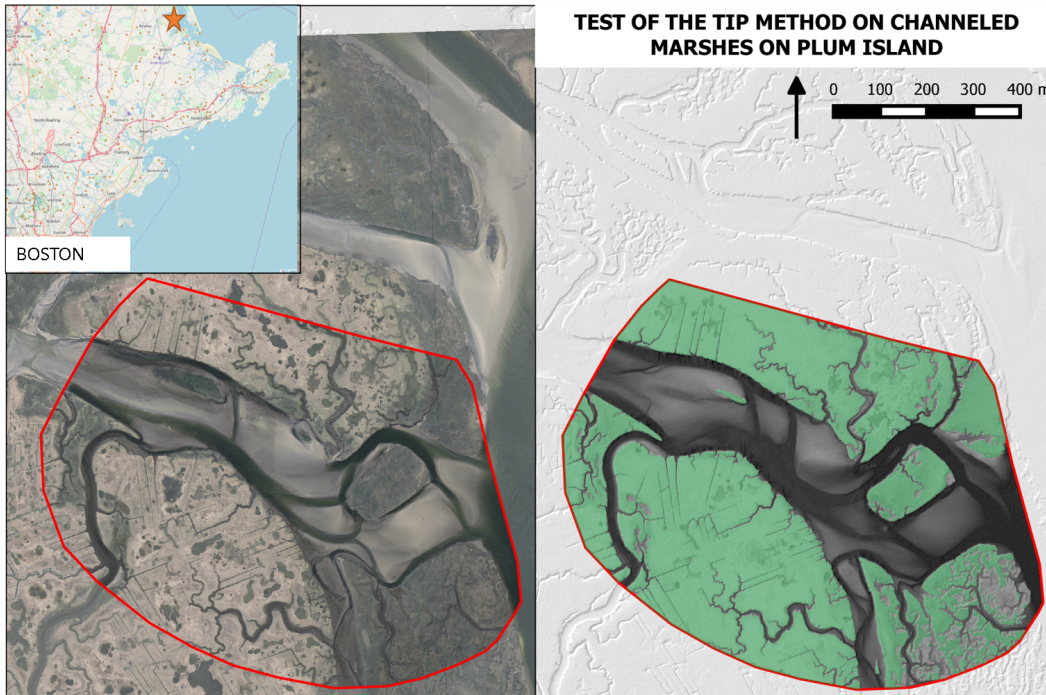


Fig. 2.

Printer-friendly version

Discussion paper

