

## ***Interactive comment on “Unsupervised detection of salt marsh platforms: a topographic method” by Guillaume C. H. Goodwin et al.***

**Guillaume C. H. Goodwin et al.**

g.c.h.goodwin@sms.ed.ac.uk

Received and published: 21 December 2017

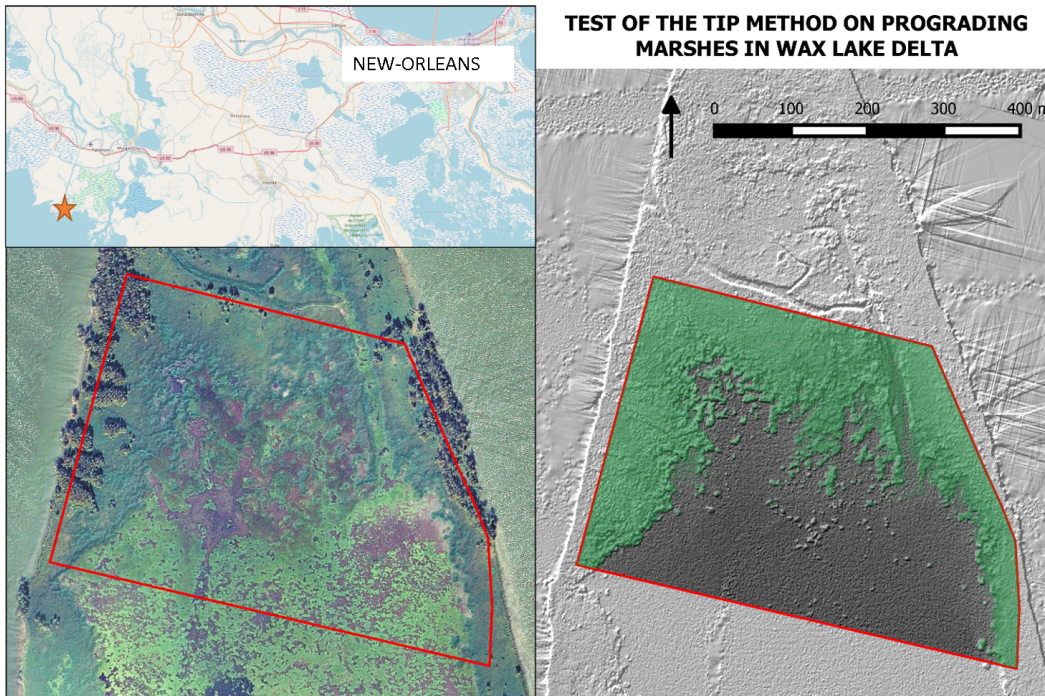
This response was uploaded in the form of a supplement

Please also note the supplement to this comment:

<https://www.earth-surf-dynam-discuss.net/esurf-2017-60/esurf-2017-60-AC2-supplement.zip>

---

Interactive comment on Earth Surf. Dynam. Discuss., <https://doi.org/10.5194/esurf-2017-60, 2017>.

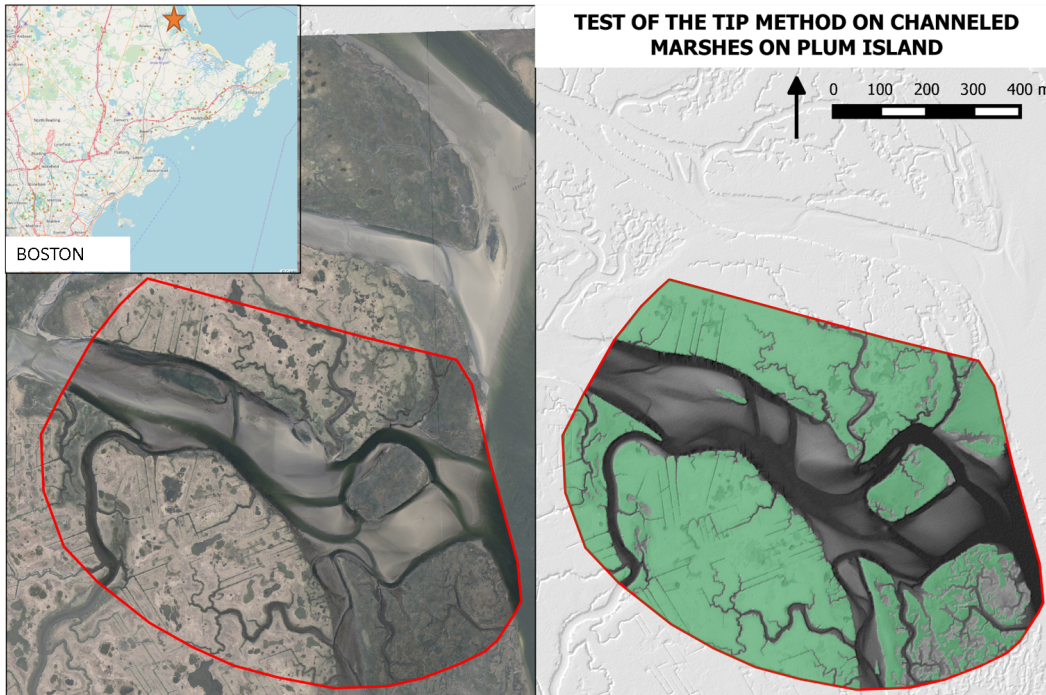


**Fig. 1.**

Printer-friendly version

Discussion paper





**Fig. 2.**

Printer-friendly version

Discussion paper

