

Authors' response

We thank both reviewers for providing valuable feedback on the original version of this manuscript. The referees' comments are marked with 'RC1'/'RC3' (Referee #1, Referee #3), our responses are indicated with 'AC'. Comments by referee #1 are grouped into general comments (A) and specific comments (B) that were embedded in the text. Page and line numbers in the (B) section refer to the original version of the manuscript. The manuscript with marked changes follows after the response.

Referee #1 W. Haeberli

A) General comments

10 RC1: Geomorphology: The region under investigation is permafrost and rock-glacier country with numerous small to large landforms reflecting viscous creep of ice-rich frozen material. The corresponding modern scientific literature should be consulted and mentioned in order to understand the phenomena and the corresponding environmental conditions.

15 AC: The proglacial area is indeed a very complicated structure consisting of several landforms of varying age. It has been simplified e.g. in the paper of Erokhin et al. (2017) where most of the area is marked as 'stagnant ice' and the frontal part of the moraine complex is referred to as a 'rock glacier'. Shatravin (2000) determined by carbon dating several moraine generations just within the main body where the thermokarst lakes are located. Therefore, we decided to use the term 'moraine complex' and further explain its structure in the section Study site.

20 RC1: Glacier-permafrost relations/interactions: The polythermal structure in glacier is correctly mentioned in the text but should be documented with measured data or at least be discussed in comparison with, for instance, better-known polythermal glaciers in Tien Shan, in Svalbard or in the Alps.

25 AC: We added two references to the text – one is by N. V. Kovalenko et al. (2014; unfortunately, it is published in Russian only) and it involves results of GPR survey on Adygine glacier confirming its polythermal structure. The second reference is to a paper by D. A. Petrakov et al. (2014; in English) and it describes the same methods applied on Sary-Tor glacier, situated in Ak-Shiirak Massif, Tien Shan, also proving its polythermal structure.

30 RC1: Geophysical soundings: The corresponding sounding results should not only be mentioned but shown: what were the measured specific resistivity values and their distribution patterns at depth; how were the results interpreted and how do they compare with the many investigations in other cold mountain ranges? Where were the mentioned radio-echo soundings measured? What center frequency was used?

AC: We incorporated the geophysical sounding in the manuscript's methods (Section 2.2) and also added the resulting profiles and their location (Fig. 1) to support the description of lakes' dam structure.

35 RC1: How does the glacier bed look like? Are there overdeepenings where future lakes may form, will the expansion of lake 3 continue and how large could this lake become? Numerical models exist to calculate glacier-bed topographies and corresponding glacier-bed overdeepenings. Corresponding studies have been carried out

over large regions (Alps, Peru, Himalaya/Karakoram, etc.) and should be mentioned. The results of such model calculations could be compared to the results of the radio-echo soundings.

5 AC: The potential overdeepenings where future lakes may form are depicted in the Section 3.3, Figure 7. This is supported by a topography of glacier bed based on GPR data, which was added to Appendices, a notice was inserted in the respective section. We do not intend to carry out numerical modelling of the glacier bed to compare with the sounding results (although it would be interesting), that is beyond the scope of this paper. However, we added a section about numerical models for calculating glacier bed topography to discussion. Lake 3 is not expected to grow to very large dimensions as there is a rock outcrop situated south of the lake, currently around 50 m from the lake shoreline. The lake will probably expand to south-east direction, we estimate that its volume may reach 2-3 times the current value (i.e. 0.2-0.3 mil. m³).

10 RC1: Future scenarios: What exactly is the relation of this part of the study to the primary subject of the paper (lakes, hazards)?

AC: We explained our motivation for incorporating past and future site evolution in the introduction section.

15 RC1: Realistic scenarios can also be estimated using simple extrapolation techniques. Degree-day models are well established, empirical- pragmatic-useful rather than sophisticated approaches for calculating future glacier scenarios.

AC: The GERM model, which is used in this study, is based on a degree-day approach and thus rather simple using only air temperature and precipitation as driving data. However, it needs to downscale air temperature and precipitation from the large scale resolution of climate models.

20 RC1: What is the reason for the strong inter-annual variability of mass balances calculated for the time period 2020-2030?

AC: The statement on the high inter-annual variability was removed as only filtered values are shown, which does not allow to identify single years. For the period 2020-2030, variability of mass balances is not particularly high. We reworked and rephrased the entire paragraph describing results shown in Figure 6.

25 RC1: Why were point mass balances on the glacier measured parallel instead of perpendicular (elevation profile, mass balance gradient) to the ice margin?

30 AC: The main goal of the 2007 mass balance measurement was to test the method and setting the points near the terminus was favourable given the conditions. However, the following year the measurement was found rather unsuccessful and so the point network was not extended. We omitted this part from the manuscript (please, see the specific comment P10L17).

RC1: Hazard assessment: The authors should consult the GAPHAZ technical guidance document on hazard assessment concerning glaciers and permafrost in mountain regions (<http://gaphaz.org/>), the work of ICIMOD about dangerous lakes and also make themselves familiar with the extensive work on hazard assessments in connection with lakes in Peru by their university colleagues at Prague (Emmer, Vilímek, etc.).

35 AC: We thank the reviewer for notice on GAPHAZ technical guidance document, it involves a comprehensive summary approach that can serve as a basis for regional hazard assessment strategies. We are familiar with the

work of ICIMOD on identifying potentially dangerous glacial lakes, the material includes many valid points and numerous relevant parameters. Our aim was to balance number of parameters that are important for the studied region and procedure's austerity to ensure feasibility of such assessment under the given conditions. We are, of course, aware of the work of our colleagues from the university. The regional specifics of glacial lakes in Cordillera Blanca do not correspond with the situation in northern Tien Shan, e.g. in terms of the most common lake (dam) type, outburst trigger, or presence of buried ice in the dam; that is why we would not be satisfied with simple adopting an assessment. We acknowledge the mentioned scientific works and will mention them in the manuscript's discussion.

RC1: English language: The English needs smoothing in places.

10 AC: The original version of the manuscript was proofread by an English native speaker, we plan to have the final version checked again as soon as it is approved.

B) Specific comments

15 RC1: P1L1: Some of these lakes are ponds rather than lakes. Such water bodies could also be called „periglacial“ or „proglacial“.

AC: Accepted, changed to 'proglacial lakes'.

RC1: P1L11: ... or under the influence of impacts.

AC: Sentence amended.

RC1: P1L16: How is this related to hazards?

20 AC: Sentence corrected (inaccurate expression). It was meant to refer to the name of the model used (Glacier evolution runoff model). Nevertheless, the changes in glacier runoff have a certain impact on lake outburst hazard (provided such lake is fed by glacier meltwater). In case a lake has only subsurface drainage, its hydrological balance is an essential factor influencing lake's stability (the outburst of Teztor lake, discussed in the paper, can serve as an example).

25 RC1: P2L10: Define and use the term 'thermokarst'

AC: The term thermokarst used in connection to thawing of ice-rich permafrost. Sentence amended.

RC1: P2L17: Add references.

AC: Sentence omitted.

RC1: P2L19: Refer to GAPHAZ Technical Guidance Document.

30 AC: We added reference to the GAPHAZ document.

RC1: P2L21: Add references or eliminate statement.

AC: Sentence amended.

- RC1: P3L9: Provide a brief overview concerning the structure of the paper here.
- AC: Introduction text amended, overview of the paper's structure incorporated in the penultimate paragraph.
- RC1: P3L19: This type of reference is problematic. Better show the statistics or eliminate the sentence.
- 5 AC: Problematic reference replaced, sentence amended. There is a lot of data related to potentially dangerous glacial lakes obtained by field surveys of employees of Kyrgyz Ministry of Emergency Situations, however, such information is disclosed only partially in form of annual reports. We are aware of the difficult verifiability of such data, therefore, we try to limit their usage to minimum.
- RC1: P3L22: Provide annual values (% per year) - for better comparability.
- AC: Accepted. Total area change recalculated to % change per year for both periods.
- 10 RC1: P4L3: Again a problematic reference. Explain precisely what has been done and where the information is accessible.
- AC: Please, see explanation P3L19. Further explanation added to the figure caption.
- RC1: P6L2: Eliminate: The same statement follows below.
- AC: Sentence omitted.
- 15 RC1: P6L29: Confusing - clarify.
- AC: Text amended, clarified.
- RC1: P6L30: Sufficient for what exactly?
- AC: Text amended, clarified.
- RC1: P7L3: Why exactly?
- 20 AC: Text amended, clarified.
- RC1: P7L17: Hazard specialists know that - unnecessary to mention.
- AC: Sentence omitted.
- RC1: P8L2: Crack formation in ice depends on critical strain rates under extension.
- AC: Sentence omitted.
- 25 RC1: P9L26: Correct is 2017.
- AC: Corrected.
- RC1: P10L14: When exactly is that - 2018?
- AC: Phrase specified.

RC1: P10L17: Ice thickness change results from ablation and the (vertical) movement component. What exactly was measured?

5 AC: We measured both horizontal and vertical shift of the points on the glacier using geodetic station. However, after having a deeper look at the data we concluded it would be better we omitted the glacier thickness part completely, as we are not able to distinguish the ablation component reliably.

RC1: P11L3: Numbering the lakes again here would be helpful. Mark rock outcrop with an arrow or so.

AC: Accepted. Lakes' numbers added, rock outcrop marked.

10 RC1: P11L10: This is an unusual term: rock glaciers are commonly called to be active - inactive - relict. Read the rich modern scientific literature about rock glaciers, mention the phenomenon earlier in the text and deal with it in an adequate way - it is an important part in the landscape and plays a key role in the glacier-permafrost interactions of the region.

AC: The landform's description extended (section 2.1 Study area). Please, see comment in the Geomorphology section (General comments).

RC1: P12L4: Be precise: when, where, how much, what were the effects?

15 AC: Text clarified. Changes in the lake's basin morphometry are continuous, yet of a small scale (at most a few tens of m³ of material sliding from the basin walls per year). This backwasting takes place mainly in the northern and north-eastern part of the basin, here the changes are recognizable even by visual inspection only. Our aim was to highlight the fact, that these changes occur constantly and are documenting melting of buried ice adjacent to lake basin.

20 RC1: P12L13: Again: be precise: did the lake level change or the lake bottom?

AC: Text clarified. The statement is related to the previous sentence, both lake area and depth decreased due to siltation.

RC1: P12L15: This sounds interesting - please show the sounding results and discuss them in detail with reference to comparable soundings published in the literature.

25 AC: The geophysical sounding profiles and their location were included in the manuscript, similar case mentioned in discussion.

RC1: P12L29: What exactly is the evidence for that? Is there permafrost forming now as a consequence of glacier retreat?

AC: Text clarified. Exposed buried ice lenses were observed in the lake's vicinity.

30 RC1: P13L15: Which lakes - comments?

AC: Comment added to the figure caption.

RC1: P14L9: Better „scenarios“?

AC: Accepted.

RC1: P15L10: In glacier-bed overdeepenings determined by radar soundings? Make correct reference to other studies simulating sites of possible future lake formation. Show bed topography without ice.

5 AC: Text amended, clarified. Glacier bed topography added to Appendix, numerical modelling studies added to discussion.

RC1: P16L5: What causes the large future (!) inter-annual variabilities in runoff?

AC: See the comment above. This was a misinterpretation in the first version of our paper. Inter-annual variability of glacier mass balance and also discharge will not be that significant in the future, according to our simulations.

10 RC1: P18L14: This part (=Discussion) is far too long and not always to the subject of the paper. Shorten and focus.

AC: The discussion section was shortened, some parts were amended. We omitted the part on glacier retreat as it is not an essential part of the paper. Instead, we added a section about modelling of glacier bed overdeepenings.

RC1: P19L3: At glacier terminus?

15 AC: This part of discussion was omitted.

RC1: P20L20: This seems to be a peak discharge? Where would this have been reached - far from the glacier? Better provide an estimate of the volume.

20 AC: Text clarified. The peak discharge was estimated at 350 m³ s⁻¹ at the junction of Teztor Valley and Adygin Valley, i.e. about 3 km from the glacier. The estimated volume of debris deposited at the Adygin fan (where it reaches the main Ala Archa Valley) was 200 000 m³.

RC1: P21L18: 2017.

AC: Corrected.

RC1: P22L9: And by 2100? 2050 is not the end of the development.

25 AC: Yes, that is definitely true. However, with respect to a hazard assessment, a time period until 2050 is already long in the future for practitioners. We argue, that the general line of development of glacier development and related potential for lake development is well captured by the period until 2050, clearly showing the development of future hazard. Additionally, going beyond 2050 would make a more detailed sounding of glacier bed topography (by e.g. GPR) necessary.

30

Referee #3 P. Thakur

RC3: The area, length and depth of given glacier lakes are based on ground based surveys and satellite images, but no uncertainty or accuracy of these measurements is given in the text?

AC: Accepted. More information on accuracies added to the section 2.2 Field mapping.

- 5 RC3: The climate change scenarios refer to old AR 3/4 time (A1B etc.), as now IPCC 5 report is also already over and CORDEX data (with RCPs 4.5/8.5 etc) can be used to get the latest climate change scenario or As per upcoming IPCC 6 AR, the temperature change of 1, 1.5 and 2.0 degree, along with precipitation change, can use used for future climate simulations, and its impact on glacier lake evolution.

- 10 AC: Thank you, we are aware of that. Though the SRES scenario data are meanwhile replaced by the representative concentration pathways (RCP) approach of IPCC (IPCC, 2013), the uncertainty ranges of future large scale temperature and precipitation fields (which are the input data for our mass balance model) from the global climate model simulations are in a similar order and main part of uncertainty will come from the further downscaling (which is limited because of sparse data availability of observed air temperature and precipitation series). We argue that for our purpose of assessment of future glacier extent, in particular for the future
15 development of glacial lakes, these scenarios are sufficiently realistic.

RC3: The GPR profiles can be shown along two surveyed lines, A and B.

AC: Accepted. A figure with geophysical profiles and their location were added. The section 2. Data and methods was supplemented with additional information on the geophysical survey.

RC3: Final glacier lakes hazard map can be shown as a figure.

- 20 AC: We summarized the lakes' hazard in Table 5 and also showed the potential triggers of lakes' outburst in Figure 9.

Development of proglacial lakes and evaluation of related outburst hazard at Adygine glacier-complex, nNorthern Tien Shan

Kristyna Falatkova¹, Miroslav Šobr¹, ~~Bohumír Janský⁴~~, Anton Neure~~o~~iter², Wolfgang Schöner³, Bohumír Janský¹, Hermann Häusler⁴, Vojtěch Beneš⁵, Zbyněk Engel¹

¹ Department of Physical Geography and Geoecology, Charles University, 128 43 Prague, Czechia

² Department of Climate Research, Zentralanstalt für Meteorologie und GeodynamikZAMG, 1190 Vienna, Austria

³ Department of Geography and Regional Science, University of Graz, 8010 Graz, Austria

⁴ Department of Environmental Geosciences, University of Vienna, 1090 Vienna, Austria

⁵ G IMPULS Praha spol. s r.o., 170 00 Prague, Czechia

Correspondence to: Kristyna Falatkova (falatkok@natur.cuni.cz)

Abstract. Formation and development of glacial lakes in mountain regions is one of the consequences of glacier recession. Such lakes may drain partially or completely when the stability of their dam is disturbed or as a consequence of impacts. We presented a case study from Central-Asian mountain range of Tien Shan, a north-oriented tributary Adygine valley-Adygine, where a glacier retreat resulted in formation of several generations of lakes. The aim of this study was to analyse past development of different types of glacial lakes influenced by the same glacier, to project site's future development, and to evaluate the hazard of individual lakes with an outlook for expected future change. We addressed the problem with a combination of methods, namely bathymetric, geodetic, and geophysical on-site survey, satellite image and DEM digital elevation model (DEM) analysis, and modelling of glacier ~~runoff evolution~~development. Based on the case of glacial lakes of varied age and type, we demonstrate the significance of glacier ice in lake's development. Lake 3, which is in contact with glacier terminus, has changed rapidly over the last decade, expanding both in area and depth and increasing its volume more than 13 times (7 800 m³ to 106 000 m³). Hydrological connections and routing of glacier meltwater proved to be an important factor as well, since most lakes in the region are drained by subsurface channels. Within the hazard evaluation of lakes, we highlighted the importance of field data which can provide crucial information on lake stability. In our case, the understanding of site's hydrological system and its regime helped to categorise Lake 2 into low outburst hazard, while Lake 1 and Lake 3 were labelled as medium hazard lakes. Further development of the site will be driven mainly by rising air temperature and increasingly negative glacier mass balance. All three scenarios predict a significant glacier area decrease by 2050, specifically leaving 73.2 % (A1B), 62.3 % (A2), and 55.6 % (B1) of the 2012 glacier extent. The glacier retreat will be accompanied by changes in glacier runoff with first peak expected around the year 2020.

1 Introduction

Glacial lakes can be seen as gems gleaming in the harsh mountain environment. However, at the same time, they can pose a serious threat to downstream settlements and infrastructure. If we focus on Asian mountain ranges, the now common term

GLOF (glacial lake outburst flood), first used for the Himalayan region, is ubiquitous. Mainly due to the development of satellite-based sensor technologies, the areas under scrutiny of investigators have increased from the Himalayas (Benn et al., 2012; Fujita et al., 2009; Shrestha et al., 2010) and Karakoram (Chen et al., 2010; Haemmig et al., 2014) to the Tibetan Plateau (Liu et al., 2014; Wang et al., 2013; Zhang et al., 2017), Pamir (Mergili and Schneider, 2011), and Tien Shan (Bolch et al., 2011; Engel et al., 2012; Narama et al., 2017; Sorg et al., 2012). In the territory of Kyrgyzstan, there are about 2 000 glacial lakes (>1 000 m²), almost 20 % of them are potentially dangerous, and approximately 15-20 lakes are at risk of sudden drainage each year (Erokhin and Zaginaev, 2016). However, the dry and glacier meltwater-dependent region of Central Asia remains rather in the background of interest.

Some glacial lakes form and drain within a relatively short time (Erokhin et al., 2017). Others exist for years and decades without major change, and lastly, there are lakes in a phase of enlargement. Expansion of glacial lakes broadly correlates with warming temperature trends and negative glacier mass balance patterns (Lei et al., 2012; Mergili et al., 2013; Zhao et al., 2015). In addition, a recent study shows that the expansion of glacial lakes within a dry continental climate regime can be closely related to ~~degradation of permafrost~~thermokarst processes as well (Li et al., 2014). This means that lakes enlarge when in contact with a retreating glacier tongue, by melting of ice in the lake basin bed or sides, or by filling due to increased inflow from a glacier. Other factors playing a role in lake evolution include: erosion of surface drainage channel, formation, expansion or blockage of subsurface drainage channels, dam morphology changes, or slope movements adjacent to the lake.

Outbursts of mountain lakes occur almost annually in Kyrgyzstan (in recent years, these were Lake Merzbacher - 2017, Lake Chelektor - 2017, and Aksai - 2015) ~~and~~. ~~Given the~~ generally increasingly intensive use of mountain valleys, greater losses can be expected as a consequence (Dussailant et al., 2010). ~~With all the processes accompanying glacier retreat (slope instabilities, melting of interstitial and buried ice, debuitressing effect, higher meltwater input), a lake becomes increasingly unstable.~~ Once an outburst is triggered, a flood (often evolving into hyperconcentrated flow or debris flow) threatens areas in the lower parts of a valley. To lower the risk, A-an assessment procedure framework (example in GAPHAZ Technical guidance document: GAPHAZ, 2017), for dealing with this hazard includes should be applied including the following steps: i) identification of potentially dangerous lakes, ii) detailed evaluation of the hazard, and iii) application of mitigating measures. Our study includes the second step, a detailed hazard evaluation ~~of selected lakes identified as potentially dangerous, and tries to set a new path.~~ As needs for field data in such a hazard assessment has been ~~expressed repeatedly~~ generally acknowledged, we present an assessment based on combination of on-the-spot and remotely-gained data.

~~Based on a detailed study of one particular site, we look at the issue of a glacier development and the associated actively evolving glacier forefield, and its consequences on lower lying areas. To address the problem of rapidly changing conditions in mountain regions, we incorporate the perspectives for the future development of the site and related outburst hazard into our study. The structure of this paper expresses our intention to promote more complex approach to the issue. We analyse the past development of the site, following both glacier and the proglacial lakes, then we look at the expected future conditions at~~

~~the site, and finally we evaluate the lakes' outburst hazard and estimate how it can evolve with changing conditions. In our opinion, to analyse glacier retreat and lakes' formation without touching the topic of consequences (present and those in near future) is as incomplete as evaluating outburst hazard without knowing the past evolution of the site.~~

5 Although the study site is not particularly suited for the purpose of glacier retreat monitoring alone, in terms of observing the site in a more complex way, we find it very appropriate. The glacier is considered to be representative of smaller glaciers, which are subjected to relatively fast retreat rates (Narama et al., 2010) and have a generally shorter response time to changes of climatic conditions compared to larger ones (Wang et al., 2014). This allows us to follow a larger development period in a smaller time scale. Also the existence of glacial lakes documenting glacier shrinkage is convenient – they are at various stages of development and could help us to better understand the evolution over time of different types of lakes. Due to the occurrence
10 of lake outbursts in the region, the high elevation of the site, and its proximity to densely populated areas, a hazard assessment strategy with estimate of future change is desirable and of practical relevance.

~~Based on a detailed study of one particular site, we look at the issue of a glacier development and the associated actively evolving glacier forefield, and its consequences on lower lying downstream areas. In order to address the problem of rapidly changing the fast processes conditions in mountain regions, we incorporate the perspectives forof the future scenarios for the development of the site and related outburst hazard into our study. As our intention is to promote a more complex approach to the issue of hazard assessment, our study includes three particular objectives: i) to analyse past evolution of different types of glacial lakes influenced by the same glacier, ii) to provide an insight into probable future evolution of the site, and iii) to evaluate hazard of individual lakes with an outlook for possible future change. As a consequence of our objectives the structure of the paper is as follows: First, we analyse the past development of the local setting, following both the glacier and the proglacial lakes. Then, we look at the potential future conditions at the site, and finally we evaluate the lakes' outburst hazard and estimate how it can evolve with changing conditions. In our opinion, to analyse glacier retreat and lakes' formation without touching the topic of consequences (present and those in near future) is as incomplete as evaluating outburst hazard without knowing the past evolution of the site.~~

15
20

~~The structure of this paper expresses our intention to promote more complex approach to the issue. We analyse the past development of the site, following both glacier and the proglacial lakes, then we look at the expected future conditions at the site, and finally, we evaluate the lakes' outburst hazard and estimate how it can evolve with changing conditions. In our opinion, to analyse glacier retreat and lakes' formation without touching the topic of consequences (present and those in near future) is as incomplete as evaluating outburst hazard without knowing the past evolution of the site.~~

25

The particular objectives of this study include: i) to analyse past evolution of different types of glacial lakes influenced by the same glacier, ii) to provide an insight into probable future evolution of the site, and iii) to evaluate hazard of individual lakes with an outlook for possible future change.

2 Data and Methods

2.1 Study area

The research site is situated in Northern Tien Shan, specifically Kyrgyz Ala-Too, ~~T, i.e. one of the which is outer regions.~~ The highest peak of this East-West-directed range is Pik Semenova Tienshanskogo, with 4 895 m a.s.l. Although the Kyrgyz Ala-Too is not as highly glaciated as ~~ranges in c~~Central Tien Shan, the now glacier-free parts of the valleys show signs of former glacier extent. The main Ala Archa Valley currently has approximately 33 km² of its area covered by glaciers, and is drained into the Chuy River, which is part of a large endorheic basin. The most common lake type of Kyrgyz Ala-Too is a lake formed in an intramorainic depression (Table 1). ~~Statistics show that~~According to Erokhin (2012), 83.6 % of potentially dangerous lakes are ~~categorised in 'ice-cored moraine-dammed' group~~lakes, which includes intramorainic and thermokarst lakes with presence of buried ice ~~(S. Erokhin, unpublished data).~~

~~Table 1. Number and share of glacial lake~~Representation of different lake types in Kyrgyz Ala-Too, northern Tien Shan, in 2017. ~~Thermokarst lakes are included in intramorainic type, cirque lakes are represented by rockstep lake type. Only lakes with minimum area of 1 500 m² were categorised. Based on manual mapping using satellite imagery inat Google Earth and refined with field data included in Erokhin and Zaginaev (2016).~~

<u>Lake type</u>	<u>Number and share</u>	
<u>Moraine-dammed</u>	<u>13</u>	<u>14.5 %</u>
<u>Intramorainic depression</u>	<u>48</u>	<u>53.3 %</u>
<u>Rockstep (+ moraine)</u>	<u>17</u>	<u>18.9 %</u>
<u>Landslide dam</u>	<u>8</u>	<u>8.9 %</u>
<u>Ice dam</u>	<u>4</u>	<u>4.4 %</u>
<u>Surface drainage</u>	<u>21</u>	<u>23.3 %</u>
<u>Subsurface drainage</u>	<u>69</u>	<u>76.7 %</u>
<u>Total</u>	<u>90</u>	<u>100 %</u>

Development of glaciation in the Ala Archa basin is monitored in the long term mainly due to its position in proximity of the Kyrgyz capital, Bishkek, and the popularity of the valley among tourists visiting the National Park. According to Aizen et al. (2006~~7a~~), there was a reduction of glaciated area in the Ala Archa watershed by ~~5.1-0.29-%/yr~~ between 1964 and 1981~~77~~ and ~~-0.51-0.6-%/yr~~ between 1981~~77~~ and 2003 documenting an accelerated retreat by the end of the 20th century. The overall reduction of glaciated area over ~~660~~ years (1943-2003) was 15.77 %, which is an above-average value – in Tien Shan, the glacier area shrank by 14.2 % (Aizen et al., 2007a). Farinotti et al. (2015) confirm this trend and Bolch (2015) points out that, although the number of glaciers increased due to disintegration of several glaciers, the total glacierised area was reduced by 18.3±5.0 % between 1964 and 2010. Rising air temperatures (especially since the 1970s) have caused a negative mass balance

of most glaciers, which has also led to changes in the hydrological regime of glacial streams (Aizen et al., 1996; Glazirin, 1996; Pieczonka et al., 2013). [Sporadic permafrost occurs at elevations above 2 700 m a.s.l., discontinuous at 3 200–3 500 m a.s.l., and continuous above ~3 500 m a.s.l. \(Gorbunov et al., 1996\).](#)

5 [The Adygine watershed has an area of 39.6 km² and its glacierised area constitutes ~10 % of the basin \(3.9 km²\). The total elevation differences are up to ~~is~~ 2 370 m, the valley below the glacier has an average slope of 10.8°. The upper part of the Adygine Valley contains large amounts of loose glaciofluvial sediments and is dominated by several generations of moraines up to a distance of 3.5 km from the current glacier terminus.](#) The Adygine ~~glacier~~ complex (42°30'10'' N, 74°26'20'' E) closes ~~an~~ [this 8-km long tributary valley with northern orientation and reaches an elevation of 3 400-4 200 m a.s.l. \(Fig. 1\). The upper](#)

10 ~~part of the Adygine Valley contains large amounts of loose glaciofluvial sediments and is dominated by several generations of moraines up to a distance of 3.5 km from the current glacier terminus.~~ [The upper part of the complex involves a polythermal glacier \(2.8 km²\) \(Kovalenko et al., 2014; similar structure described at Sary-Tor glacier by Petrakov et al., 2014\), followed by a three-level cascade of glacial lakes that have evolved as a consequence of glacier retreat in the past 50 years. The glacier terminus is currently situated at 3 600 m a.s.l.; the tongue is rather steep and short, emerging from a relatively flat, larger source area. A large part of the glacier is covered with a thin layer of dust and debris, considerably lowering the albedo of its surface.](#)

15 [The position of equilibrium line altitude \(ELA\) on the northern slopes of Kyrgyz Ala-Too is at approx. 3 900 m a.s.l., resulting in an ablation zone covering more than 65 % of the glacier area. The lakes found at the site \(Table 2\) are of varying age and have different positions in the connected hydrological system draining meltwater down the valley. The most recently formed lakes are close to the glacier terminus, reacting to changes in glacier melt rates sensitively and redistributing the water further downstream, either by surface or subsurface channels. The middle level is represented by the largest lake of the site, Lake 2 \(32 000 m²\), with a fairly stable annual hydrological regime \(Falatkova et al., 2014\) supplying water to the lowest part of the cascade, Lake 1. Not being a permanent lake, this intramorainic depression is filled with water only during an ablation season when the rate of incoming meltwater is higher than the capacity of its subsurface drainage.](#)

20 [The](#) ~~A~~ [Holocene moraine complex at an elevation of 3 450 m a.s.l. forms the lower part of the Adygine complex. It consists of several parts of varying age \(Shatravin, 2000\), some of them can be identified even based on visual inspection only. The western part is formed by creeping ice-rich debris with a typical relief of arcuate ridges and furrows at its terminal part, ice lenses are present and exposed occasionally \(Fig. 1b\). From the east, a smaller ice-debris matrix moves under the influence of gravity and adjoins the central landform. The main body is a so called debris-derived rock glacier that formed below the glacier terminus. The landform has a prominent oversteepened front almost 700 m wide and it consists of glacier ice overlain by perennially frozen debris. In its western part, thermokarst processes are manifested in subsidence craters, cracks, and sagging, numerous thermokarst lakes and exposed ice lenses \(Fig. 1c\) can be found here. The eastern part is considered an older generation with rather flattened surface and stable lakes of ~~lower water turbidity. lakes.~~](#)

25 [The](#)

30 [lakes.](#)

Table 1. Number and share of glacial lake types in Kyrgyz Ala-Too, Northern Tien Shan. Thermokarst lakes are included in intramorainic type, cirque lakes are represented by rockstep lake type. Only lakes with minimum area of 1 500 m² were categorised. Based on satellite image analysis and in consultation with S. Erokhin.

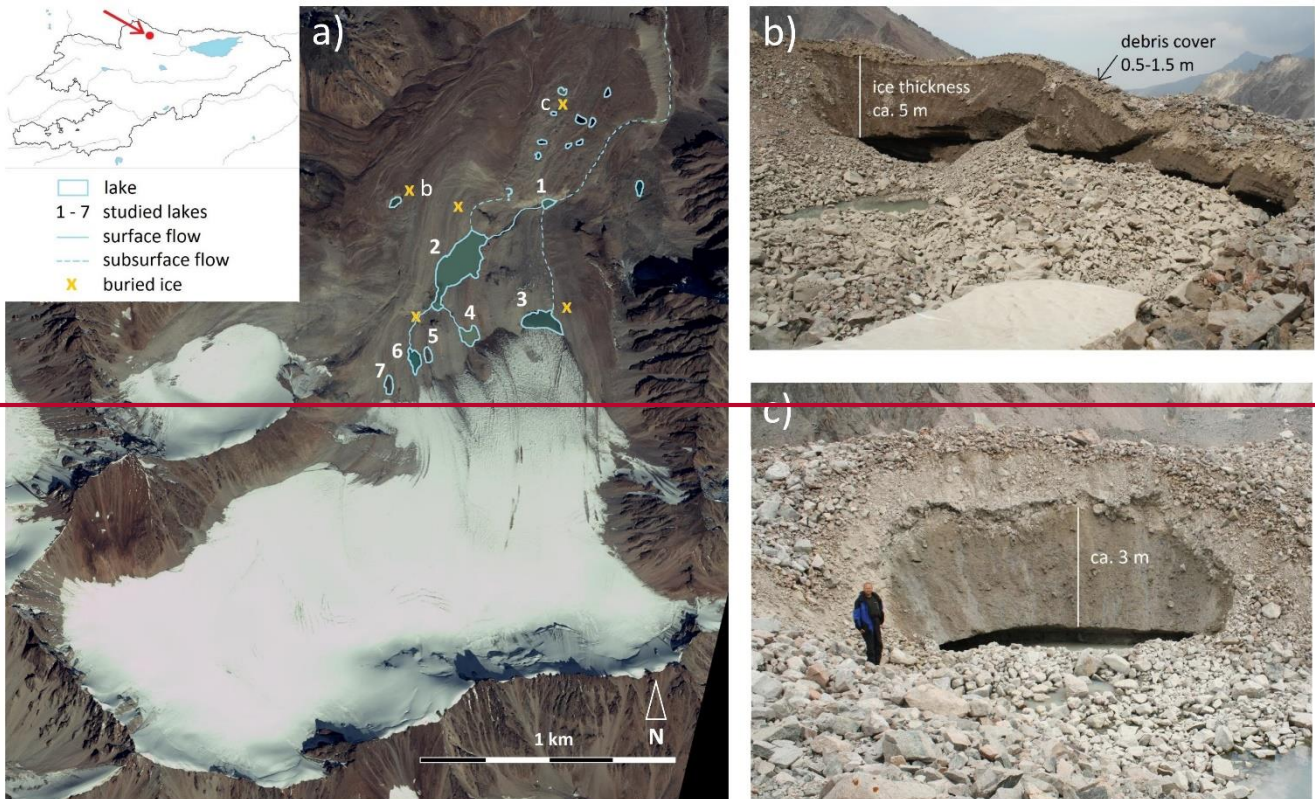
Lake type	Number	and share
Moraine-dammed	13	14.5 %
Intramorainic depression	48	53.3 %
Rockstep (+ moraine)	17	18.9 %
Landslide dam	8	8.9 %
Ice dam	4	4.4 %
Surface drainage	21	23.3 %
Subsurface drainage	69	76.7 %
Total	90	100 %

Climatic conditions in the area are continental, characterised by relatively low precipitation and high annual and daily air temperature fluctuation. This is clearly evident at the Ala-Archa station (2 200 m a.s.l.) which reports a 22 °C difference between mean air temperature (MAT) of the warmest and coldest months (Jul 13 °C, Jan -9 °C) and mean annual precipitation totals of 450 mm. Some 1 500 m higher, at the Adygine glacier, the MAT for January drops to -22 °C and reaches 5 °C in July; precipitation is estimated at 700-800 mm. On the northern slope of Kyrgyz Ala-Too, winters are characterised by low precipitation totals, whereas the maximum is typically reached in late spring and the beginning of summer. Sporadic permafrost occurs at elevations above 2 700 m a.s.l., discontinuous at 3 200-3 500 m a.s.l., and continuous above 3 500 m a.s.l. (Gorbunov et al., 1996). The Adygine watershed has an area of 39.6 km² and elevation difference of 2 370 m. Its glacierised area constitutes about 10 % of the basin (3.9 km²). The valley below Adygine glacier has an average slope of 10.8 °.

The upper part of the glacier Adygine complex involves a polythermal glacier (2.8 km²) (Kovalenko et al., 2014; similar structure described at Sary-Tor glacier by Petrakov et al., 2014), followed by and a three-level cascade of glacial lakes that have evolved as a consequence of glacier retreat in the past 50 years (Fig. 1). The glacier terminus is currently situated at 3 600 m a.s.l.; the tongue is rather steep and short, emerging from a relatively flat, larger source area. A large part of the glacier is covered with a thin layer of dust and debris, considerably lowering the albedo of its surface. The position of equilibrium line altitude (ELA) on the northern slopes of Kyrgyz Ala-Too is at approx. 3 900 m a.s.l., resulting in an ablation zone covering more than 65 % of the glacier area. The lakes found at the site (Table 2) are of varying age and have different positions in the connected hydrological system draining meltwater down the valley. The most recently formed lakes are close to the glacier terminus, reacting to changes in glacier melt rates sensitively and redistributing the water further downstream, either by surface or subsurface channels. The middle level is represented by the largest lake of the site, Lake 2 (32 000 m²), with a fairly stable annual hydrological regime (Falatkova et al., 2014) supplying water to the lowest part of the cascade, Lake 1. Not being a permanent lake, this intramorainic depression is filled with water only during an ablation season when the rate of incoming meltwater is higher than the capacity of its subsurface drainage.

5 Climatic conditions in the area are continental, characterised by relatively low precipitation and high annual and daily air temperature fluctuation. This is clearly evident at the Ala Archa station (2 200 m a.s.l.) which reports a 22 °C difference between mean air temperature (MAT) of the warmest and coldest months (~~Jul~~ 13 °C for July, ~~Jan~~ -9 °C for January) and mean annual precipitation totals of 450 mm. Some 1 500 m higher, at the Adygine glacier, the MAT for January drops to -22 °C and reaches 5 °C in July; precipitation is estimated at 700-800 mm. On the northern slope of Kyrgyz Ala-Too, winters are characterised by low precipitation totals, whereas the maximum of precipitation is typically reached in late spring and the beginning of summer. Sporadic permafrost occurs at elevations above 2 700 m a.s.l., discontinuous at 3 200–3 500 m a.s.l., and continuous above 3 500 m a.s.l. (Gorbunov et al., 1996). The Adygine watershed has an area of 39.6 km² and elevation difference of 2 370 m. Its glacierised area constitutes about 10 % of the basin (3.9 km²). The valley below Adygine glacier has an average slope of 10.8°

10



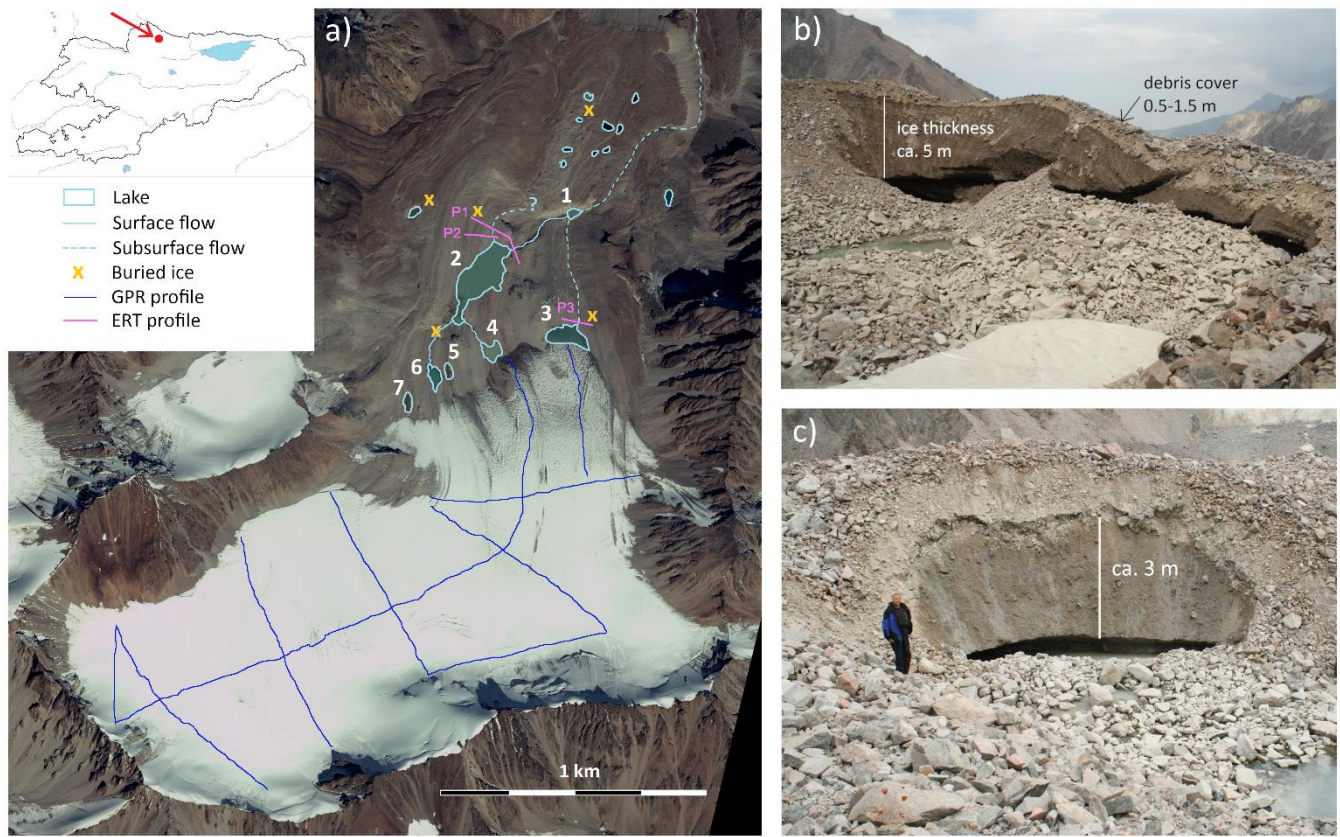


Figure 1. Overview of the Adygene glacier complex (a) and its recent dynamics – exposure of buried ice (b, c). Numbers 1-7 refer to studied lakes, P1-P3 refer to geophysical profiles. Study site marked with an arrow on a map of Kyrgyzstan in upper left corner. The position of b) and c) spots is marked in Fig. 1 figure 1a. Image source: Worldview-2, 2011; photos: K. Falatkova (2017).

5

Table 2. Basic parameters of the three largest lakes of the site.

Lake	Max volume [m ³]	Max depth [m]	Elevation [m a.s.l.]	Dam type	Freeboard [m]	Buried ice	Drainage
1	15 000 (200 000)*	5	3 450	intramorainic depression	-	yes	subsurface
2	210 000	22	3 540	riegel + moraine	0 - 2.6	yes	surface + subsurface
3	106 000	14	3 580	riegel + moraine	0 - 1	yes	subsurface**

* potential volume of the lake in case of a drainage blocking

** during high water level dam overflow observed, water sinks under ground-surface after approx. 5 m

10

2.2 Field mapping

A research station built at the site provides an adequate background for field measurements. Climatic data and ground temperatures are obtained from an automated weather station situated near the Adygin glacier at 3 560 m a.s.l. The hydrological regime of the lakes is monitored ~~due to~~with pressure sensors installed in Lake 1 (2012-2015), Lake 2 (2007-2017), and Lake 3 (2012-2017). ~~The devices record the lakes' water level which, together with a bathymetric map of a basin, provide information on detained water volume changes.~~

The glacier retreat has been monitored since 2006 during the ablation season, by means of a geodetic survey carried out with a Leica TCR 705 total station ~~(infrared beam on a reflective prism – accuracy: 0.005 m)~~. The survey was focused solely on the terminal part of the tongue, where the retreat is most significant and may result in exposure of overdeepenings (potential future lakes). The series is supplemented with glacier limits acquired from aerial images taken in 1988 and 1962 ~~(scale of the survey: 1:38 600, image resolution: 1 m)~~. The lakes' shoreline changes are measured by the same means as the glacier terminus. To capture changes of lake basins and derive the volume of detained water, a repeated bathymetric survey was carried out at selected lakes (Sobr and Jansky, 2016). The depth was recorded in a 2.5 m step at defined profiles, using an echo-sounder mounted on a boat ~~(depth measurement accuracy: 0.1 m)~~. We processed the data obtained and interpolated them into a bathymetric map.

~~We commenced to measure ablation at the terminal part of the glacier in 2007, when ablation stakes were installed in two transversal profiles. In the following year and in 2012, the stakes were surveyed and the position difference calculated. The selected key locations of the site (lakes' surroundings of the lakes and their dams) were surveyed by electrical resistivity tomography and spontaneous polarisation, in order to detect buried glacier remnants and possible seepage routes. In order to acquire information on glacier thickness and bed topography for adjusting the model of future glacier extent and identifying potential areas for lake formation, ground penetrating radar (GPR) was used. The location of the profiles is shown in Fig. 1a, along the central longitudinal profile, at 5 transverse, and 3 short connecting profiles.~~

~~The method of electrical resistivity tomography (ERT) consists in measuring the resistivity of the subsurface by means of a number of electrodes located along a profile. Interpretation of measured data was performed using the software Res2Dinv (Loke and Barker, 1995), which serves for 2D inversion of measured resistance data and calculation of 2D cross section under the profile. The resistive section of the observed profile approximates the actual distribution of the individual resistive layers in the depth range given by the maximum spacing of the electrodes. We used the ARS-200E (GF Instruments CR) with 48 electrodes in 4.4 m increments. The maximum range of electrodes was 206.8 m, with a depth range of about 50 m.~~

~~Spontaneous polarization method (SP) measures the natural electrical potential of the rock environment; in case of lake dams, the filtering potential that arises from water filtration through the porous environment is tested. Measurements were made with GEOTOR I with offset compensation. Non-polarizable electrodes have been used to minimize the effect of the transient resistance between the measuring electrode and the geological environment. The measurement was carried out in a potential~~

variation where the electrical potential of a given point on the profile is measured relative to the fixed reference point. Measurement step was around 10 m, every 5th point was recorded using GPS.

Ground-penetrating radar (GPR) was used ~~at the terminus of Petrov glacier~~ to acquire information on glacier thickness and subglacial topography. GPR data were collected along the central longitudinal profile, at 5 transverse, and 3 short connecting profiles.

An unshielded 50MHz RTA (Rough Terrain Antenna) and MALÅ CU-II control unit were used for data collection. The signal acquisition time was set to 860 ns, and scan spacing was about 0.07 m. The collected data were processed and interpreted using the Reflex-Win software version 4.5. ~~The depth axis of profiles was calculated from the time axis and the wave velocity for glacier ice (0.167m ns⁻¹). The permittivity for glacier ice corresponds with the value of 3.17 (Davis and Annan, 1989).~~

2.3 Modelling of glacier evolution

The glacier mass balance model GERM (glacier evolution runoff model) applied in this study is well established for simulating glacier mass balance from climate data based on a sophisticated degree-day approach (Hock, 1999; Huss et al., 2008). In our case, future glacier mass balances of Adygine glacier until 2050 are calculated with GERM, forced by empirically downscaled scenarios data for daily air temperature and precipitation, described below. As glacier mass balance is not measured at Adygine glacier, we used the mass balance data from nearby Golubina glacier (WGMS, 2017) for validating the simulated mass balances of the GERM model against measured mass balances for the period 1981-1994. Mass balances could be validated for both winter and summer balances. Additionally, we could use discharge data from Adygine River for 1960-1987 to validate the modelled discharge of GERM with observed data.

Despite generally low data availability in Central Asia, daily air temperature means and precipitation totals were gathered from 2 stations close to the study area: Alplager (2 130 m a.s.l., 1978-2010) and Baityk (1 580 m a.s.l., 1914-1979). The meteorological station data were used to calibrate and validate the downscaling model (multivariate regression and analogue method, Benestad, 2004; Benestad et al. 2007). Reanalysis data from NCEP/NCAR (Kalnay et al., 1996) were used as predictor fields in order to downscale long term data sets of precipitation and air temperature for the study region. For scenario simulations until 2050 three different SRES scenarios, A1B, B1, and A2 (IPCC, 2007), were performed by the ECHAM5/MPI-OM coupled atmosphere-ocean model (Röckner et al., 2003). Though the SRES scenario data are meanwhile replaced by the representative concentration pathways (RCP) approach of IPCC (IPCC, 2013), the uncertainty ranges of future large scale temperature and precipitation changes of the two approaches are rather similar and smaller compared to the uncertainty range of climate data coming from further downscaling. We argue, that for our purpose of assessment of future glacier extent, in particular for the future development of glacial lakes, these scenarios are sufficiently realistic. ~~The glacier mass balance model GERM (glacier evolution runoff model) applied in this study is based on a sophisticated degree day approach (Hock, 1999;~~

Huss et al., 2008). The future glacier mass balances until 2050 is calculated with GERM, forced by empirically downscaled scenarios data for daily air temperature and precipitation. Despite generally low data availability in Central Asia, daily air temperature means and precipitation totals were gathered from 2 stations near investigation area: Alplager (2 130 m; 1978–2010) and Baityk (1 580 m; 1914–1979). The station data were primarily used to calibrate and validate the downscaling method. For reanalysis, the NCEP/NCAR datasets were selected (Kalnay et al., 1996). Simulations of scenarios A1B, B1, and A2 (IPCC, 2007) were performed by the ECHAM5/MPI-OM coupled atmosphere-ocean model (Röckner et al., 2003). On the basis of reanalyse data (NCEP data 1948–2010) and future scenario simulations (ECHAM5 data 2011–2050) statistical downscaling methods were used to link the large-scale climate information to local station data (Benestad, 2004; Benestad et al. 2007). For this study, we referred to already existing simulations so the scenarios are not up to date. However, for our purpose, in particular for the development of glacial lakes, these scenarios are sufficient.

Furthermore, glaciological and hydrological data were used to calibrate and validate the model. For this purpose, mass balance data of the proximal Golubina glacier (1981–1994) (WGMS, 2017) were involved, as there are no such data for Adygin glacier itself. In this period the annual, winter and summer mass balance was measured. Especially the winter mass balance is beneficial for the calibration of GERM.

In order to estimate the potential area-spots for glacial lake formation, the data on glacier bed topography (Fig. A2) acquired by ground penetrating radar (GPR) were used. The digital elevation model (DEM) data for the glacier surface were consulted from Shuttle Radar Topography Mission (SRTM) with a resolution of 30_m (Farr et al. 2007). The combined information on future glacier extent and topography of the exposed area were analysed in GIS by determining flow directions and identifying sinks (i.e. overdeepenings).

2.4 Hazard assessment

Presented lake outburst hazard assessment is qualitative and was adapted to the regional distinctive features, i.e. dry climate, common occurrence of buried ice, permafrost. We based the assessment procedure on our knowledge gained through fieldwork in the region, focused especially on hydrological systems of proglacial lakes. The specificity of the region is the origin of lakes – the most common type is a lake formed in an intramorainic depression (Table 1). Many lake hazard evaluations are based on cases of moraine dams with a distinct morphometry. However, this type of lake does not occur that frequently in the region, representing only 2 % of the potentially dangerous ones (S. Erokhin, personal communication Erokhin and Zaginaev, 2016). Nevertheless, inspiration for this assessment is drawn from assessments by ICIMOD (Ives et al. ICIMOD, 2011). Allen et al. (2016), Frey et al. (2010), and Huggel et al. (2004). We hold the opinion that hazard assessments based solely on remotely sensed data are appropriate when applied over a large area and as a first step. However, at least for lakes labelled as potentially dangerous, additional evaluation which would include on-site research needs to be carried out.

In this paper, overall hazard is introduced as a combination of a lake's ~~(geomorphological)~~ susceptibility to burst and cause flooding, and the presence of possible triggers that have a capacity to cause an outburst. To assess lake susceptibility, the following parameters were selected and a simple qualitative rating suggested (Table 3):

5 *Lake volume* – involves the size of a lake and volume of retained water. Although hazard does not increase proportionally with lake size, a larger volume generally means higher hydrostatic pressure on a dam and greater potential to cause damage. The thresholds are set according to information on GLOF cases in Kyrgyzstan.

10 *Lake type* – is primarily connected to the stability of a dam. The material forming a dam (or a depression in which a lake exists) has varying characteristics and behaviour in relation to water. Rockstep is considered the most stable, as water usually has a minor effect on it. However, when covered with loose morainic material left behind a retreating glacier, this part of a dam is then prone to erosion, piping, and is less stable overall. Interaction of a lake with an ice dam results in even higher risks – ice melting due to heat transfer from water, high hydrostatic pressure on the ice dam can lead to its uplift, causing lake drainage; ~~shear stress within the glacier body may trigger crack formation.~~

15 Another parameter influencing lake stability is *ice contact*. A lake in direct contact with a glacier is considered more dangerous than one at a distance, as it is strongly affected by glacier behaviour. Its evolution and morphological changes can be dynamic as the glacier retreats, advances or disintegrates.

20 A lake's hydrological regime is represented by one parameter – *drainage type*, with only two options – surface or subsurface drainage. It is the limited (or changing) capacity of a subsurface channel which makes lakes with this type of drainage more dangerous, as such lakes are prone to filling when inflow is increased. Accumulated water can then be released rapidly due to channel enlargement under higher hydrostatic pressure. A surface channel, in comparison, regulates the lake water level naturally and maintains its hydrological balance.

Growth possibility of a lake depends on lake basin characteristics and the presence of ice that can melt. Lakes with terminated expansion possibilities are considered more stable than those which can enlarge for some reason.

25
30 Table 3. Lake's susceptibility parameters and rating. The scheme on the right shows possible combinations of parameters' rating and the resulting susceptibility. ~~Please nN~~Note that this simplifying table serves as guidelines to susceptibility estimate ~~and that e-~~Even medium total susceptibility means a lake is dangerous, may burst and cause damage.

Parameter		Rating	Parameters rating					Result
Lake volume [m ³]	< 50 000	low	H	H	M	M	M	H
	50 000-500 000	medium	H	H	M	M	L	H
	> 500 000	high	H	H	M	L	L	H
Lake/dam type	Rock step	low	H	M	M	M	M	H
	moraine-rock, moraine dam	medium	H	M	M	M	L	H
	intramorainic depression	medium	H	M	M	L	L	H
	ice	high	H	M	L	L	L	H
Lake drainage	surface	low	H	L	L	L	L	M
	subsurface	medium	M	M	M	M	M	M
Glacier contact	no	low	M	M	M	L	L	M
	yes	medium	M	M	L	L	L	L
Growth possible	no	low	M	L	L	L	L	L
	yes	medium	L	L	L	L	L	L

10 Determination of the degree to which a lake is susceptible to outburst is followed by assessment of potential triggers. The means to determine whether the trigger has a potential to cause outburst of the specific lake or not, may be distant (VHR satellite image, DEM), as is the case of the first group of triggers (Table 4), or on-site, as is necessary e.g. for inner dam stability or subsurface channel functioning.

15 The fall of mass into a lake is one of the most common triggers of lake outburst (Emmer and Cochachin, 2013; Ding and Liu, 1992; Falatkova, 2016), resulting in an impact wave which overtops or destabilises the dam. Following a widely used procedure, the distance between a lake and a slope and slope steepness are the parameters determining the trigger potential (Alean, 1985; Fischer et al., 2012; Noetzli et al., 2003). In the case of calving, a lake's contact with a cliff-like glacier terminus is a crucial condition.

20 Development and stability of a glacial lake can be affected by melting of buried ice and related thermokarst processes. During stagnation of a debris-covered glacier, an ice-cored moraine dam can be formed. These cores present a weak point in a dam, as their ablation changes a dam's inner structure (Richardson and Reynolds, 2000).

Not only landslide dams are prone to failure caused by piping. Cases of GLOF due to piping in moraine dams were observed as well (Xu, 1988). Moraines consist of unconsolidated heterogeneous material and therefore may be prone to seepage and internal erosion (piping) as a conduit grows and a dam is weakened (Awal et al., 2011).

25 Another dam stability-decreasing phenomenon – earthquake, was confirmed as a primary trigger of several lake outbursts (Clague and Evans, 2000; Lliboutry et al., 1977).

In the case of a lake not having a surface drainage and meltwater from a glacier being routed into the lake, there is the potential of significant hydrostatic pressure increase in times of higher melt rates of snow or ice. A sudden air temperature rise may

therefore cause disturbance of the lake hydrological balance with possible consequences for dam stability. Increase of hydrostatic pressure may also be caused by blockage of a subsurface channel, which is a very unpredictable and still rather poorly understood phenomenon. Monitoring of changes in lake's morphometry due to frequent sliding of lake walls or the hydrological regime of a lake can serve as a tool for determining channel blockage potential.

5

Change of lake outburst hazard is a complex situation, resulting from interaction of geomorphological processes and the behaviour of the glacio-hydrological system. Development of englacial and subsurface routing of meltwater is especially crucial, yet difficult to determine, and beyond the scope of this paper. The presented estimate of hazard change is linked to climatic changes (rising MAAT) only, and involves impacts accompanying deglaciation that were observed in other mountain ranges, such as glacier retreat, altered glacier melt rates, also slope instabilities (debuitressing effect), permafrost degradation, or buried ice melting (Allen et al., 2016; Frey et al., 2010; Haeberli et al., 2017⁶). The general assumptions of future climatic conditions, glacier retreat, and altered melt rates are supported by the glacier mass balance model (Sect. 3.3).

15 Table 4. Triggers with potential to cause outburst and their description.

Trigger	Potential to cause outburst	
	not present or very low	present
Fall of mass into lake	Ice avalanche	average slope lake-steep glacier parts* over 17°
	Landslide/rockfall	proximal** steep slope - unconsolidated material (over 30°) or rockwall (over 50°)
	Calving	contact with glacier (drifting ice blocks, crevassed front)
Inner dam stability	Buried ice melting	buried ice detected/surface signs observed in lake's proximity
	Seepage/piping	water getting to surface at the airy side of dam, moisture marks at airy side of dam, sediment accumulation near spring
Hydrostatic pressure increase	Earthquake	considerable seismic activity in the region
	Increased inflow	lake without surface drainage, glacier meltwater inflow
	Subsurface channel blockage	lake drained by subsurface channel, channel varying capacity, previous lake filling-up without increased inflow observed
	Upper lake outburst	presence of potentially dangerous lake upstream

* avalanche starting zone steepness: polythermal glacier over 25°, cold-based glacier over 45° (Alean, 1985)

**average slope trajectory over 14° (Noetzli et al., 2003)

3 Results

3.1 Past glacier development

The terminus position of the investigated glacier has changed significantly since the 1960s. Over the past five decades, the furthestmost part of the glacier terminus retreated approx. 630 m (Fig. 22). Adygin glacier became disconnected from its smaller western branch probably during the 1950s. According to an aerial image taken in 1962, the tongue was divided into two parts by a resistant rock outcrop. The larger western part reached the rock riegel at an elevation of approx. 3 540 m a.s.l. (close to the current Lake 2 drainage channel); the narrower eastern tongue bypassed the outcrop reaching 100 m lower, to 3 450 m a.s.l. (currently the position of Lake 1). In the following decades, both parts retreated at an average rate of 8 m a⁻¹ in 1962-1988 and 14 m a⁻¹ in 1988-2006. Currently, there is no elevation difference between the western and eastern parts of the terminus (3 640 m a.s.l.). ~~In the latest period of observation (2007-17)At present,~~ the terminus retreat rate had similar values to the earlier 1962-1988 phase, slightly over 8 m a⁻¹. A significant recession period in recent years was recorded between 2013 and 2015, when the terminus retreated some 10-15 m per year. Positional differences of retreat rate are linked to variability of glacier bed topography (rock outcrops) and to heat transfer with meltwater (contact with glacial lake). ~~Ice thickness change at the tongue monitored between 2007 and 2012 at transversal profiles (Fig. 2) showed an average ice ablation of 1.5 at profile A and 2 m a⁻¹ at profile B. The highest ablation was recorded between 2007 and 2008, namely 2.5 m a⁻¹ (A) and 2.6 m a⁻¹ (B).~~

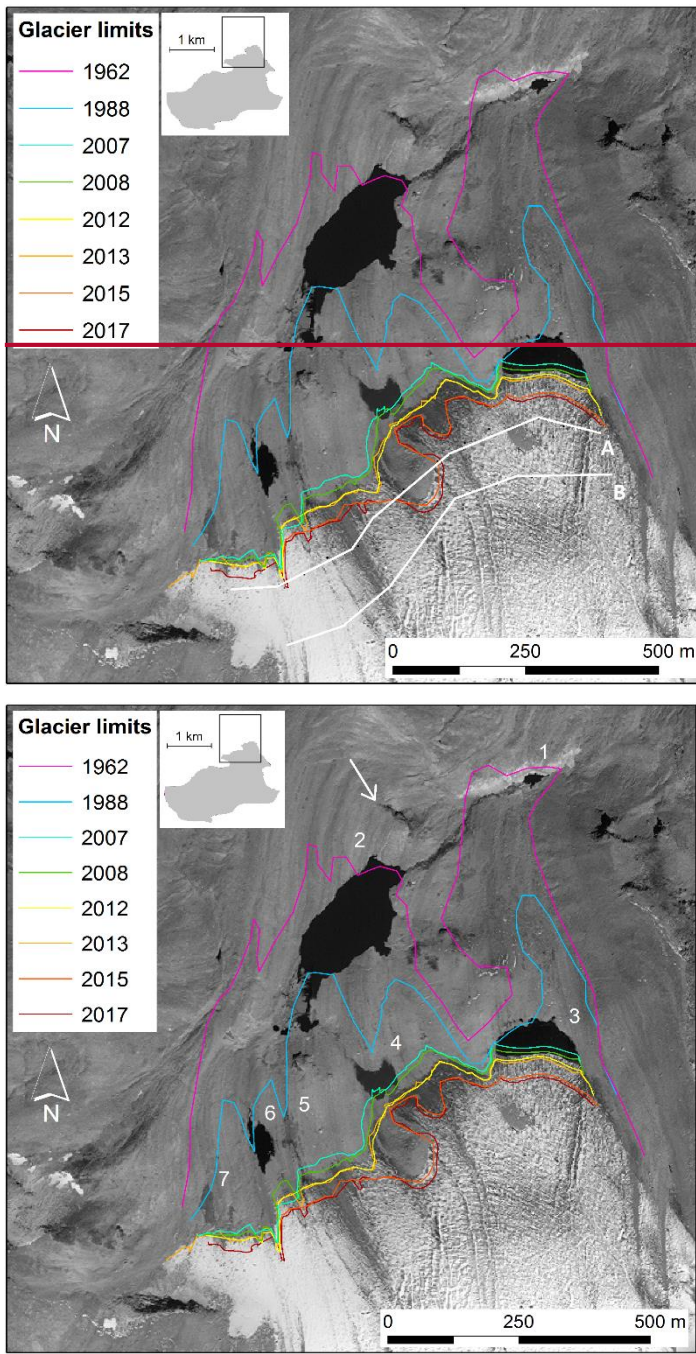


Figure 22. Retreat of the Adygine glacier tongue since 1962 and 2017. Numbers 1-7 represent the proglacial lakes, arrow marks the rock outcrop (riegel). White solid line represents ablation profiles A and B. Base image: Worldview-2, 2011.

5

3.2 Formation and development of the lakes

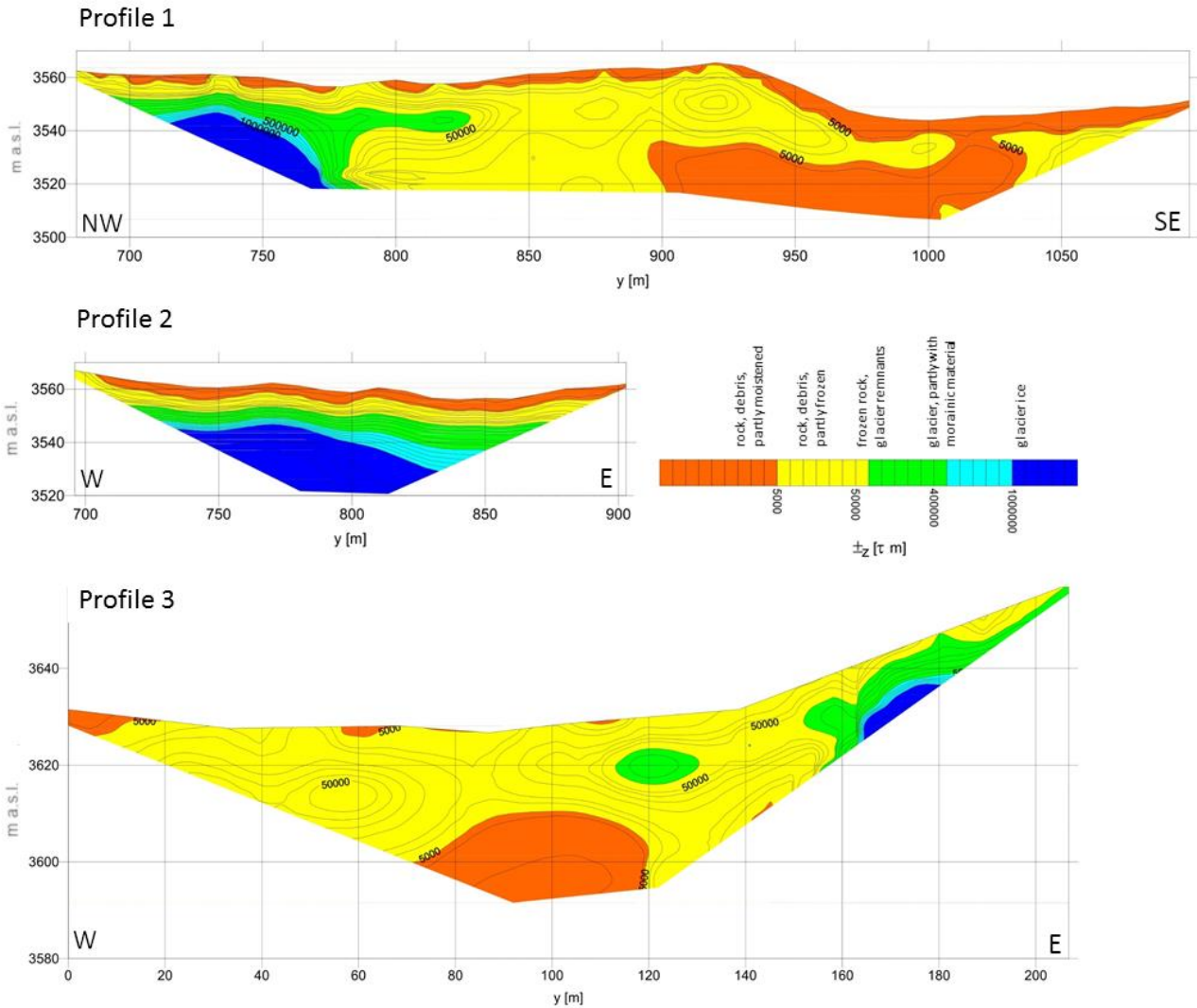
There are numerous lakes of varying size, type, and stage of development at the study site. They form a three-level cascade and at least some of the lakes are hydrologically connected.

5 3.2.1 Lake 1

The lowest part of the cascade is formed by about a dozen thermokarst lakes, situated on a large morainic platform (~~passive rock glacier~~) at an elevation of approx. 3 450 m. The largest of them (Lake 1; Janský et al., 2010) is situated directly below a rock riegel in a depression (approx. 200 000 m³), which was revealed when the eastern part of the tongue receded. The exact year when the depression filled with water is not clear. According to our knowledge of the drainage system, it was after Lake 2 developed and started supplying Lake 1 with a larger volume of meltwater (probably during the late 1980s). This intramorainic lake is not permanent, as the inflow exceeds the outflow channel capacity only during an ablation season. The lake level fluctuates significantly during the course of a day (leading to volume changes between 10 000 and 15 000 m³), caused by limited capacity of subsurface outflow channels. Besides surface water intake, water is probably routed here by seepage from Lake 2 and Lake 3. There have been changes in morphometry of the basin within recent years, as sliding of unconsolidated material from the basin walls was observed. The part close to the lake drainage has changed in particular recently, extending the basin in a north-easterly direction.

3.2.2 Lake 2

Lake 2, the largest lake of the site, began forming in about 1960, after the western glacier tongue retreated behind a rock riegel at 3 540 m a.s.l. Since then, the lake area has extended, together with further terminus recession, reaching 32 700 m² in 2005 (first on-site survey). In the second half of the 1990s, the lake lost direct contact with the glacier and, as a result, the lake ceased to grow. Lake volume is regulated by a surface outflow channel eroded in morainic material, covering a rock outcrop. In the last decade, a slight change in the lake area has been recorded, caused by siltation near the inflow. In 2017, the lake area was 30 900 m², and the maximal lake depth has slightly decreased as well since the beginning of monitoring (from 22.2 m in 2008 to 21.3 m in 2015), probably also as the result of siltation. The lake volume changed accordingly from 208 000 m³ (2008) to about 195 000 m³ (2015). Geophysical sounding confirmed the presence of buried ice in the western part of the lake dam area – the remnants of a glacier tongue formerly bypassing the rock outcrop, now covered by 8-10 m of moraine material (Fig. 3). The overall thickness of ice exceeds instrument depth range, i.e. ice is over 450 m thick. Seepage has been detected at the outflow (probably through fissured rock bar and moraine), and at the western dam part linked to the moraine-bed interface and also likely to the buried ice englacial system.



[Fig. 3L-K](#). Electrical resistivity results along profiles 1 and 2 for Lake 2, and profile 3 for Lake 3. For location of the profiles (P1-P3) see [Fig. 1a](#).

5 3.2.3 Lake 3 and newly emerging lakes

During the last 12 years Since 2004, several lakes have formed in the proximity of the retreating glacier terminus, filling rather shallow depressions. The lakes' development is closely linked to the amount and routing of glacier meltwater, as well as to basin stability. Our data suggest the importance of direct contact with the terminus, as only such lakes showed an increase in area. Lake 4 is an example of one which was enlarging slightly only until it lost contact with the glacier in 2011/12. Most lakes formed, enlarged or remained stable over a period of several years, and finally drained by subsurface routes (for detailed

10

information on lakes' morphometric changes see Table A1). An exception is Lake 6, which seemed stable over the monitoring period, only until it suddenly drained in 2015, but was filled again the following year. The recently exposed area after glacier regression is underlain by ~~stagnant~~ buried ice lenses (visual inspection, see Fig. 1a). For this reason, the probable explanation of lake sudden drainage is linked to ~~the~~ melting of the ice and ~~or~~ formation of new drainage routes ~~englacial channels~~ below connected to the lake.

Although these proglacial lakes are very unstable, the hazard they pose is negligible, as only a small amount of water (up to 4 000 m³ in Lake 4 and Lake 6) can be retained in such shallow depressions. Lake 3 is an exception; the easternmost lake is in direct contact with the glacier and is growing annually. It is situated in a deep basin - in 2007 a bathymetric survey recorded a maximum depth of 3.7 m; in 2017, as the lake enlarged, it was over 14 m. Besides the climate-driven glacier retreat, the lake has been growing due to increased glacier melting, caused by heat transfer between lake water and ice. The lake expanded from 5 710 m² in 2007 to 8 830 m² in 2012. In the past few years, the growth accelerated, leading to a lake area of 16 020 m² in 2017 (Fig. 43). Shortly after its formation, the lake had a partly surface outflow. However, soon the drainage switched to subsurface channels. Currently, during high lake water level, water overflows the dam. However, this minor surface drainage submerges under the surface after 5-6 metres. Geophysical survey (Fig. 3) revealed a similar dam structure to that of the Lake 2 dam – rock outcrop covered by thick moraine forms the western part of the dam, and the eastern part consists of stagnant ice buried by morainic material – remains of the eastern glacier tongue. As the volume of the retained water increases rapidly (7 800 m³ in 2007, 29 300 m³ in 2012, and 106 000 m³ in 2017), this recently insignificant lake has become the centre of attention.

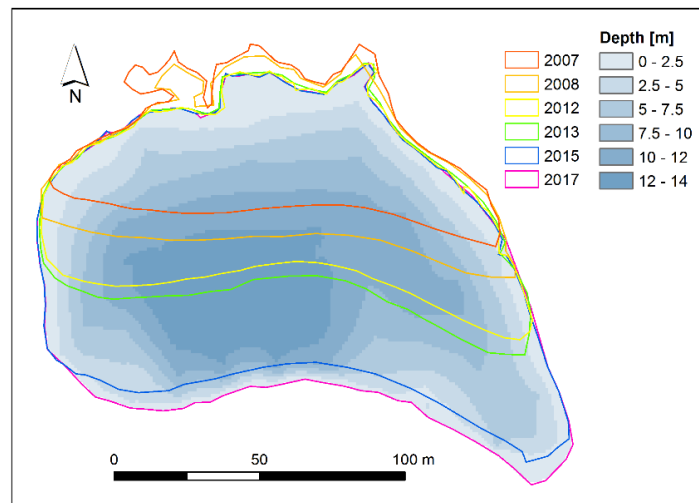


Figure 43. Bathymetric map and area changes of Lake 3 between 2007 and 2017. The lake depth data were gained during field survey carried out in 2017.



Figure 54. Thermokarst lakes of varying age in the Adygine-moraine complex below Adygine glacier. These small lakes are situated at ~3450 m a.s.l., all within a few hundred meters from each other. Difference in lakes' water turbidity/colour suggests existing (left) or missing (right) recharge from connection to melting buried ice. Photo: K. Falatkova (2017)

5

At the level of Lake 1 there are several small glacial lakes of varying age (Fig. 54), ~~most of them~~, which are formed by thermokarst processes. As these lakes have only a very small volume and no significant area development was observed, a closer investigation from outburst hazard point of view was not carried out. However, a few lakes situated in the youngest generation of a moraine recently uncovered the basin sides formed by buried glacier ice (Fig. 54, left). These lakes are expected to further develop in future, either enlarge or empty drain through newly opened drainage channels subsurface channels.

10

3.3 Expected future site conditions

According to all scenarios, the rise of air temperature in the area is very likely in future decades, with estimated higher temperature increase in spring and summer and a moderate temperature increase in autumn and winter. ~~The prediction~~ Scenarios of annual precipitation shows a reduction under all three scenarios. Especially summer and autumn depicts a decrease of precipitation. Winter and spring displays a minor reduction or even a slight increase of precipitation totals (for winter under A2, for spring under B1). Consequently, future mass balances simulated for the Adygine glacier by the GERM model are negative, and runoff will be altered. Low-pass filtered values of the mass balance of Adygine glacier are negative throughout the simulation period (Fig. 6a). Scenario A1B shows significantly less negative mass balances between 2015 and 2035 compared to the other scenarios. In this period, scenario A2 is characterized by the highest decadal variation with filtered values between -1 300 to -500 mm w.e. After 2030, all scenarios illustrate a significant negative trend indicating that a tipping point for glacier shrinkage will be reached. Scenario A1B shows the steepest decline for this period with a gradual recovery after 2045.

15

20

25

~~That is expected to result in continuing negative mass balance of the glacier Adygine, its recession, and altered runoff regime.~~

5

After application of a Gaussian 10-year low pass filter, the mass balance of Adygin glacier is negative for all the modelled period (Fig. 5a). Scenario A1B shows a less negative mass balance (-500 to 0 mm w.e.) between 2015 and 2035 compared to the other scenarios. In this period, scenario A2 has the highest variation with mass balance reaching values from -1300 to -500 mm w.e. After 2033 all scenarios illustrate a significant negative trend, especially scenario A1B showed a steep decline with a gradual recovery after 2045. There is a rather distinctive breakpoint in number of parameters at the beginning of the 2030s, which seem to accelerate the glacier area shrinkage.

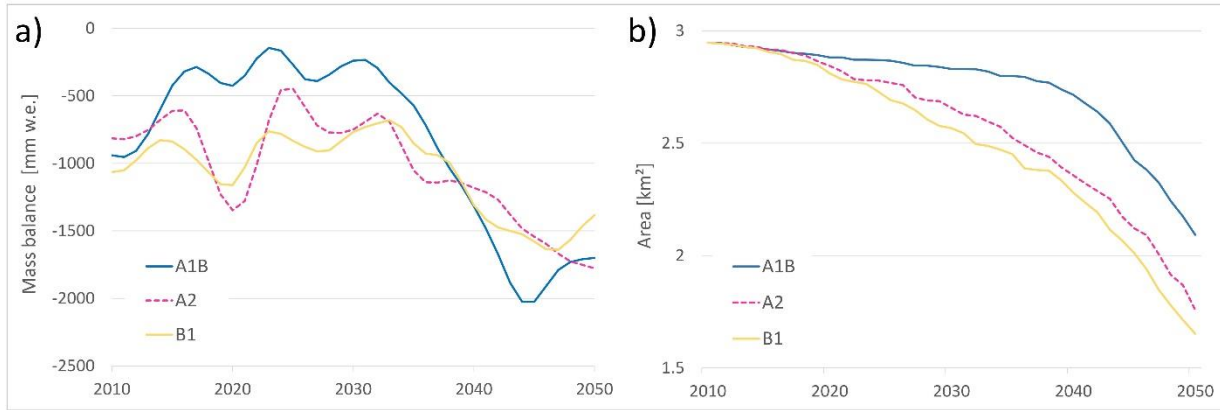


Figure 65. a) Glacier mass balance (a) and b) glacier area evolution (b) modelled according to scenarios A1B, A2, and B1 for the period 2010-2050. Data smoothed with 10-year low pass filter.

10

15

20

Due to the negative mass balances (Fig. 65a), all scenarios expect a result in a reduction of the glacier area. Under the scenario A1B, the glacier area is reduced only slightly at the beginning in the first two decades (2015-2035), in comparison with if compared to the other two scenarios (Fig. 65b). After 2035, scenario A1B shows accelerated area shrinkage (resulting from the accelerated mass loss). All three scenarios predicts simulate a significant decrease in glacier area decrease by 2050, specifically, leaving 73.2 % (A1B), 62.3 % (A2), and 55.6 % (B1) of the 2012 glacier extent area. The model output simulations indicates (Fig. 76), that under scenario B1 the glacier will disintegrate into three several parts, whereas under scenario A2 only one smaller part remains, one major and two small ones. Similarly, scenario A2 expects separation of one small part. Due to the modelled glacier retreat implies the, there is a potential for new lakes to form in the exposed area. The glacier bed topography (Fig. A2) based on GPR profiling reveals several overdeepenings. Under scenario A1B, three new lakes with total area of ca 0.1 km² can emerge, scenario A2 presents a potential for seven new lakes with a total area of 0.13 km² to form. Scenario B1 exhibits the larghighestest modelled glacier retreat and the exposed terrain has a potential for eleven new lakes with a total area of 0.17 km².

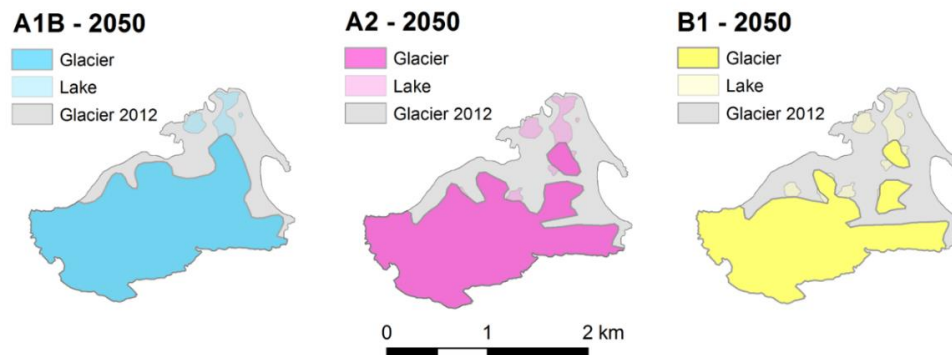


Figure 76. Modelled future glacier extent and possible-potential areas for lake formation for the year 2050 under scenarios A1B, A2, and B1.

As a result of more negative glacier mass balances, total runoff from the site Adygin glacier catchment is expected to rise. According to scenarios A1B and A2, the total runoff increases by 19.7 % and 25 % respectively, between 2010 and 2050 (Fig. 87a). However, the scenario B1 shows a rather sensitive reaction of glacier dynamics to climate change, with a clear peak of discharge values around 2020. This is expected to be followed by a decline and overall stagnation in the following decade, resulting in no significant trend in the modelled period.

Obviously, runoff for individual months will change in the future. Most pronounced changes can be seen at the beginning and the end of an ablation period, specifically in April, May, and October. Slight increase in runoff is also expected in June and September. However, for the core period of the ablation season, July and August, no significant changes are modelled. Separating total runoff into its two main components - melt from snow and melt from ice, for both today and the future (Fig. 8b), highlights a significant temporal shift for the snow component. The time of peak runoff from snow melt, which is in mid-June for the first decade of 2010-2020, will change to mid-May in the decade of 2040-2050. This will coincide with slightly earlier start of ice melt at the glacier, as the snow cover will deplete earlier as well, thus exposing the bare ice.

Comparing the runoff evolution for separate months, the most pronounced positive trend can be seen in the early period of ablation and also in the late one, specifically April, May, and October. Slight increase in runoff is also expected in June and September. The peak of ablation season, July and August, shows no significant alteration. These results coincide with the general hypothesis of future prolongation of an ablation season, its start shifted to earlier date and ending to later one. This is because rise of air temperature won't be distributed uniformly over the year. The change in runoff in May is the most striking of all (Fig. 7a). Around 2010 runoff in May was two to three times lower compared to June, however, at the end of the modelled period it reached the level of June 2010.

When we separate total runoff into its two main components: melt from snow and from ice (Fig. 7b), we can see a significant shift of the snow component. The peak runoff from melting snow in the first decade of modelled period (2010–2020) was in mid June, whereas in the last decade (2040–2050) it is expected to occur in mid May. This will also result in slightly earlier start of glacier ice melting as the snow cover will melt away and expose the bare ice.

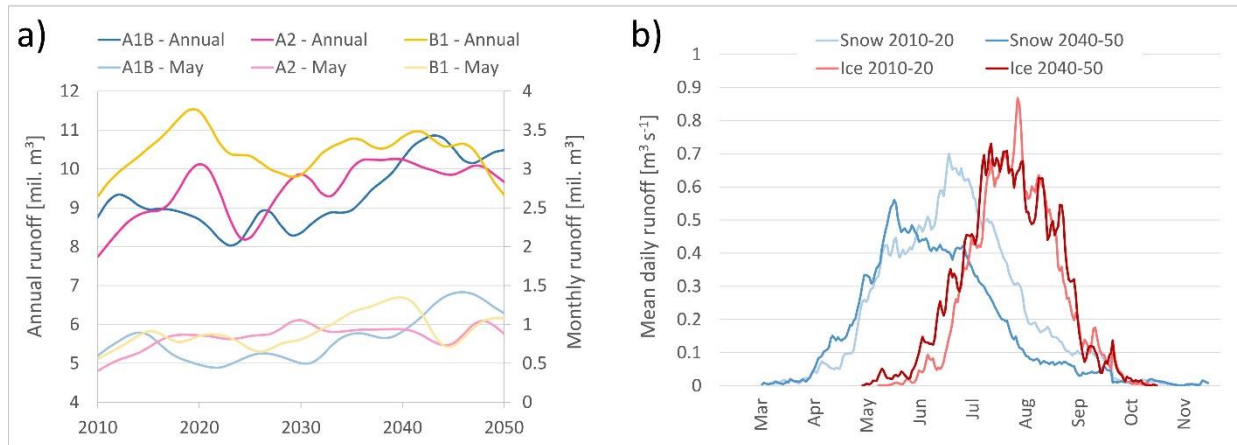


Figure 87. a) Development of total accumulated annual-yearly runoff and monthly runoff for May between 2010 and 2050. Data smoothed with 10-year low-pass filter. b) Mean of all scenarios for daily runoff (averaged over all scenarios) from snow- and ice-melt for the periods of 2010-20 and 2040-50.

3.4 Hazard assessment and its expected change

Overall susceptibility of the studied lakes is summarised in Table 5. Lakes 1 and 3 were marked as having medium susceptibility, whereas the largest lake of the site, Lake 2, is considered as being less inclined to cause a flood. Several areas were determined as a potential source of mass movement that could reach the lakes (Fig. 98). These are mainly the steep upper part of the glacier with visible deformations and cracks and also the eastern lateral moraine with buried ice. Both surface and subsurface hydrological connections among the lakes show routing of excess water in the case of rapid melting or lake drainage.

As shown by the model projections and also indicated by the position of ELA, the glacier is expected to shrink significantly in the following decades. Sorg et al. (2014) confirm that future hazard is likely to change due to glacier retreat and accompanying signs. South-oriented slopes in particular are most prone to destabilisation, due to rising temperature and the effect of high temperature differences caused by radiation. Our studied site has mostly a northern exposition, however, there are slopes that could be prone to destabilisation.

Table 5. Lakes' susceptibility to cause outburst flood.

Parameters	Area	Dam type	Drainage	Ice contact	Growth possibility	Total
Lake 1	low	medium	medium	low	medium	medium
Lake 2	medium	medium	low	low	low	low
Lake 3	medium	medium	medium	medium	medium	medium

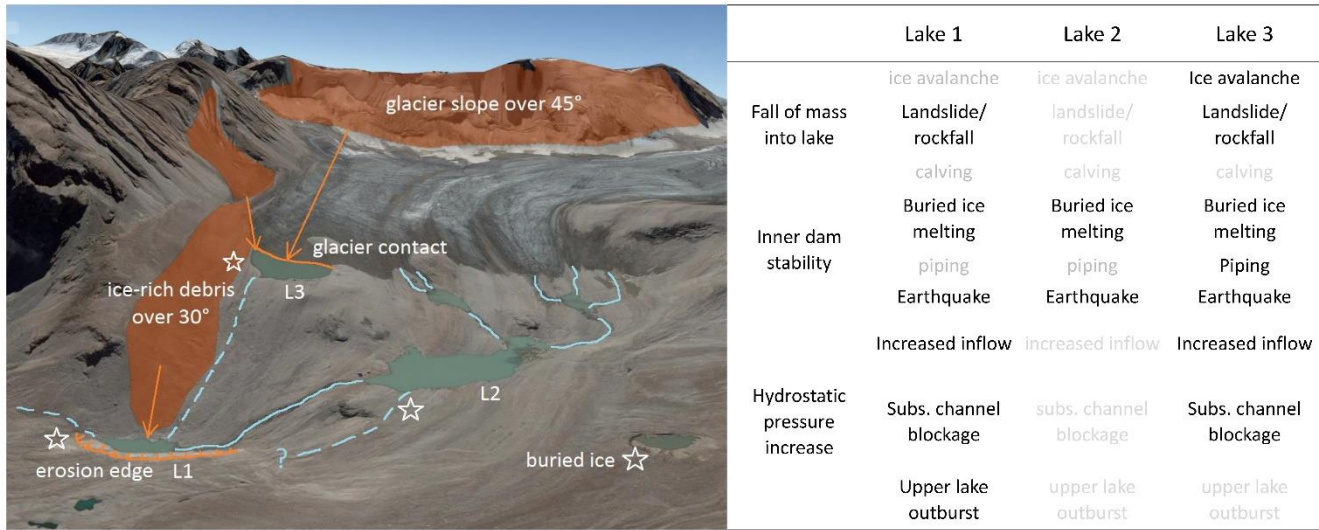


Figure 98. Geomorphological conditions and potential triggers of the lakes' outburst at Adygine complex. [View from the north \(Google Earth, 2018\).](#)

10

Lake 1 has medium susceptibility to cause flood, mainly due to its origin (intramorainic depression), subsurface drainage, and possibility for enlargement. Outburst can be triggered by a fall of mass from the north-oriented slope of unconsolidated debris which contains buried ice. The weak point is the subsurface drainage channel which leads through the moraine complex .stagnant rock glacier. Changes in capacity and, above all, blockage of such a channel would lead to lake filling up and subsequent outburst. That could also be initiated by outburst or overflow of Lake 3. Hazard is expected to increase in the future, due to intensified melting of buried and exposed ice near the lake basin, and destabilised slopes in its vicinity.

15

Lake 2 has a low susceptibility to cause flood because of its stable surface drainage, distance from the glacier terminus and associated ending of lake basin development. As there are no proximal unstable slopes (only rock outcrops), outburst is not likely to be triggered by a displacement wave from the fall of mass into the lake. A possible weak point is represented by

20

buried ice and water seepage in the western part of the dam that could lead to changes in subsurface drainage network. Hazard change is expected to be negligible in the future, as surface drainage can deal with possible higher inflow and lake stability will not be threatened by unstable slopes.

5 Lake 3 has medium susceptibility to cause flood, due to its position in contact with the glacier, rather unstable subsurface drainage and potential to grow both in area and depth. Despite the contact with the glacier tongue, calving is not probable. However, the lake is within reach of an ice avalanche from the steep glacier slope and also landslide from adjacent unstable lateral moraine. The eastern part of the dam is prone to failure, due to the presence of buried ice. Overflow of the dam caused by increased inflow from the glacier may lead to progressive dam erosion. Hazard is expected to increase together with increasing lake volume and hydrostatic pressure on the dam. Also, destabilised slopes in the lake's proximity will threaten the
10 lake stability.

Individually, the lakes present a certain threat. Nevertheless, as these lakes are interconnected, the overall hazard of the site should be considered. In this case, a chain reaction is a very probable scenario. The lowest Lake 1 is subjected to changes in its basin morphometry and thus in subsurface drainage channel functioning. In the case of a rapid increase in drainage from Lake 2, or outburst of Lake 3, this lake would be hit. And it is rather unclear how this still-evolving, subsurface-drained basin
15 would react. In regard to similar cases from the region, the lake filling up with subsequent rapid drainage can be expected.

4 Discussion

4.1 ~~Glacier retreat rate~~

~~Although the studied glacier is rather small compared to many glacier bodies in the European Alps, North American Cascade Range or Himalaya Karakoram, in the dry conditions of Central Asia the glacier is of medium size compared to glaciers in Kyrgyz Ala-Too. This range is one of the outer regions of Tien Shan, situated in the north-west. Glaciers in the western part of Tien Shan are generally rather small. Within the Ala Archa Valley, there are only six glaciers with areas of over 1 km², the largest of them – Golubina – currently has an area of approx. 5 km² (Bolch, 2015). Adygine showed the highest mass loss of these six glaciers in Ala Archa with 0.66 m w.e.a⁻¹ between 1964 and 2010 (Bolch, 2015); the area change (-17.5 %) is also more significant compared to other similar sized glaciers. However, notably larger area changes were found in the neighbouring Sokuluk Valley, where Niederer et al. (2008) calculated a loss of 22 % for glaciers > 0.5 km² between 1963 and 2000, whereas in the same period Adygine retreated by 14.3 %.~~

20
25

~~The glacier terminus lies at a noticeably higher elevation (3 600 m a.s.l.) compared to other larger glaciers in the main Ala Archa Valley; Golubina and Aksay ending some 250 m and 200 m lower, respectively. In this regard, Adygine is similar to the small glaciers (< 0.5 km²) in the main valley. It might be caused by its side position and possible blockage of moisture coming from the north, as even small glaciers within Adygine Valley terminate higher (it seems all are shifted some 200 m~~

30

higher in Adygine Valley). Although climate is said to be the major driver of glacier changes, topography plays an important role as well. In their study, Li and Li (2014) concluded that, besides climate, the aspect, elevation, and size of a glacier are major characteristics influencing glacier development.

Reliable mass balance measurements of glaciers in Central Asia are fairly scarce, and some long term observations have been discontinued. In the Ala Archa catchment, there are data of the Golubina glacier mass balance, which show a similar scale of ablation at its tongue (annual balance of $-3\,200$ mm, WGMS). However, the terminus of Adygine glacier lies in a higher elevation band; annual mass balance for Golubina at $3\,600\text{--}3\,700$ m a.s.l. is approximately $-1\,650$ mm, which is very similar to our measurements at Adygine. Other glaciers with at least some continuous data on mass balance show even higher rates of ablation in a similar elevation band to the Adygine terminus: for instance Abramov glacier in southern Kyrgyzstan shows values around $-4\,500$ mm (Barandun et al., 2015), Glacier no. 354 located in Ak Shiirak with a slightly higher terminus position ($3\,700\text{--}3\,800$ m a.s.l.) has an annual mass balance of about $-3\,200$ mm (Kronenberg et al., 2016).

4.1 Influence of a glacier on lake's development

Lake 2 is a typical example of a lake formed when a glacier retreated over a rock step. The lake growth was coupled with glacier recession, until the terminus reached a higher elevation than the lake outflow. After the loss of contact, the lake stabilised and its formation ended. Lake 3 has a similar genesis and is currently in the stage of growth. Thanks to intensive thermal exchange between lake water and ice, the glacier terminus recedes by melting and sometimes even by calving in favour of lake area and depth. As a lake loses contact with a glacier tongue, some development can continue due to melting of residual ice in the lake bed or dam. The extent of changes is, however, considerably reduced.

The case of Lake 1, formed in an intramorainic depression, demonstrates the difference in development. The lake's development is not terminated or stabilised after loss of contact with the glacier. Its further evolution is linked to buried ice, its exposure and melting. The depression formed in the 1960s and filled with water two decades later. Yet even today, the lake is subjected to changes of basin morphology and drainage as well. These lakes do not grow to large dimensions like typical moraine-dammed lakes (e.g. Tsho Rolpa and Dig Tsho). However, they can hold sufficient volumes of water and cause an outburst flood. In many cases, such lakes are even non-stationary, filling-up only when subsurface channel gets blocked, often in times of increased inflow due to snow or ice melting (Erokhin et al., 2017). The 2012 outburst from the Teztor Lake, situated in a neighbouring valley at similar altitude as Adygine, serves as an example. When filled, the lake has a volume of $70\,000\text{ m}^3$ and is usually drained by a subsurface channel with a flow rate of a few $\text{m}^3\text{ s}^{-1}$ (Erokhin et al., 2017). Nevertheless, in 2012 the channel's capacity enlarged, the flood changed into a debris flow with peak discharge estimated at $350\text{ m}^3\text{ s}^{-1}$ (at the junction of Teztor and Adygine valleys, ~ 3 km from the glacier) and $200\,000\text{ m}^3$ of debris was deposited at the fan entering Ala Archa valley (Erokhin et al., 2017). The flood continued further downstream, caused dismay even among the capital's inhabitants and material damage of approx. 100 000 USD (Zaginaev, 2013). It is the often variable subsurface drainage, the

common presence of buried glacier remnants, and a steep valley full of loose sediments downstream, which make these lakes potentially dangerous.

4.2 Model uncertainties and future conditions

5 Huss et al. (2014) describe in detail the uncertainties ~~that occur in every section~~ of glacier and runoff modelling in general,
~~therefore, we focus mainly on the input data for the model.~~In our case, GERM was calibrated with summer and winter mass
balance data of Golubina glacier from 1981 to 1994. ~~The~~Whereas simulated winter mass balances for Golubina has show no
consistent trend of under- or overestimation. ~~t.~~The modelled summer mass balance slightly overestimates the real conditions
from 1981 to 1984 and generally underestimates from 1985 to 1994. ~~Runoff data from the investigated Adygine drainage basin~~
10 ~~(1960-1980) were used to validate the results of the glacier mass balance model.~~The performance of the model for simulating
discharge is described by the Nash-Sutcliffe efficiency (Nash and Sutcliffe, 1970), which is 0.64 based on monthly mean
values of the Adygine catchment for 1960-1987. The biases and the uncertainties in the downscaled data for precipitation,
~~especially the precipitation~~ over the complex mountain topography, remain a ~~weakness.~~weakness and need further
15 improvements in the future. Also, the lack of DEM from 1960 as well as the glacier area from this time attenuates the accuracy
of the calibration of GERM simulations.

Both area and volume of glaciers all over Tien Shan are expected to decrease throughout the 21st century (Sorg et al., 2012).
Aizen et al. (2007b) as well predict significant glacier degradation linked to ELA shifting to higher altitudes as rising air
temperature won't be balanced out by sufficient increase in precipitation totals. Sorg et al. (2014) used the GERM for a glacier
and runoff modelling in Chon Kemin valley (Zailiyskiy and Kungey Alatau, Tien Shan), where the glaciers are expected to
20 vanish by 2080 under the more pessimistic scenarios (dry-warm, wet-warm). The future runoff results of Chon Kemin (Sorg
et al., 2014) are very similar to those of our study site with 'warm' scenarios expecting peak runoff in 2020s and main change
in spring runoff (increase) caused by higher winter precipitation and enhanced snowmelt in spring. A general prediction of
runoff change in Tien Shan is possible increase in near future followed by steady decline till the end of the 21st century (Sorg
et al., 2012). However, different regions of Tien Shan may exhibit varying responses and uncertainties connected to future
25 runoff modelling are still rather high. An advanced state of glacier degradation is presented by Huss et al. (2016), focusing on
small-sized glaciers (< 0.5 km²) in the Swiss Alps. Runoff from these glaciers has declined since the peak runoff year, which
occurred between 1997 and 2004. There is a significant decrease in August runoff which is typical for advanced stage of glacier
runoff decline. Based on a comparison with expected future summer runoff from Adygine glacier, we can estimate that our
study glacier is currently near the stage of runoff peak.

30 Our approach to the identification of potential spots for future lake formation is based on glacier bed topography derived from
in-situ data. For obvious reasons, it is not possible to apply such method for whole regions. Numerical models are a good
substitute and are widely used on large areas, from Peruvian Andes (Colonia et al., 2017), Swiss Alps (Linsbauer et al., 2012),

to Himalayas-Karakoram range (Linsbauer et al., 2016). Commonly used model is GlabTop, introduced by Linsbauer et al. (2009) and Paul and Linsbauer (2012), later improved (GlabTop2) by Frey et al. (2014). The model calculates glacier ice thickness based on a DEM, glacier outlines and branch lines; the improved version (GlabTop2) avoids manual delineation of the lines. Similar concept and results (Frey et al., 2014) are obtained from a model presented in Huss and Farinotti (2012). The potential sites with overdeepenings can also be identified, or confirmed, based on three morphological criteria (glacier surface features) introduced by Frey et al. (2010). This is a more laborious approach, which includes manual analysis of DEMs and high-resolution satellite/aerial imagery. If we apply these morphological criteria at the Adygine glacier, one spot with a distinct narrowing and also a change of slope can be identified. This coincides with our results pointing to presence of overdeepenings at the place of current glacier tongue. Nevertheless, as Haeberli et al. (2016a) correctly points out, there are still significant limitations to understanding the principles of the depth erosion by glaciers and thus modelling of glacier bed overdeepenings. Moreover, estimate of debris cover volume left after glacier recession is a challenge as excessive debris can smooth topographic irregularities and lead to formation of outwash plains, and not lakes (Linsbauer et al., 2016). We are aware of limitations of our approach as well. Due to the low resolution of the GPR-derived ice thickness raster, the resulting extent of potential sites for lake formation must be interpreted with caution. + limitations to our model — gpr derived ice thickness doesn't provide sufficient resolution — takže brat výsledná jezera s rezervou. Také morfo criteria by Frey2010 — u nás ano zúžení a změna sklonu — potvrzení že tam je overdeepening.

4.3—Influence of a glacier on lake's development

Lake 2 is a typical example of a lake formed when a glacier retreated over a rock step. The lake growth was coupled with glacier recession, until the terminus reached a higher elevation than the lake outflow. After the loss of contact, the lake stabilised and its formation ended. Lake 3 has a similar genesis and is currently in the stage of growth. Thanks to intensive thermal exchange between lake water and ice, the glacier terminus recedes by melting and sometimes even by calving in favour of lake area and depth. As a lake loses contact with a glacier tongue, some development can continue due to melting of residual ice in the lake bed or dam. The extent of changes is, however, considerably reduced.

The case of Lake 1, formed in an intramorainic depression, demonstrates the difference in development. The lake's development is not terminated or stabilised after loss of contact with the glacier. Its further evolution is linked to buried ice, its exposure and melting. The depression formed in the 1960s and filled with water two decades later. Yet even today, the lake is subjected to changes of basin morphology and drainage as well. These lakes do not grow to large dimensions like typical moraine dammed lakes (e.g. Tsho Rolpa and Dig Tsho). However, they can hold sufficient volumes of water and cause an outburst flood. In many cases, such lakes are even non stationary, filling up only when subsurface channel gets blocked, often in times of increased inflow due to snow or ice melting (Erokhin et al., 2017). The 2012 outburst from Teztor Lake, situated in a neighbouring valley at similar altitude as Adygine, serves as an example. When filled, the lake has a volume of 70 000 m³

and is usually drained by a subsurface channel with a flow rate of a few $\text{m}^3 \cdot \text{s}^{-1}$ (Erokhin et al., 2017). Nevertheless, in 2012 the channel's capacity enlarged and the 2012 flood changed into a debris flow with peak discharge of estimated at $3500 \text{ m}^3 \cdot \text{s}^{-1}$ (at the junction of Teztor and Adygine valleys, ca 3 km from the glacier) and $200\,000 \text{ m}^3$ of debris was deposited at the fan entering Ala Archa valley (Erokhin et al., 2017). The flood continued further downstream, caused dismay even among the capital's inhabitants and material damage of approx. 100 000 USD (Zaginaev, 2013). It is the often variable subsurface drainage, the common presence of buried glacier remnants, and a steep valley full of loose sediments downstream, which make these lakes potentially dangerous.

4.34 Lake outburst hazard assessments

The presented evaluation strategy combines knowledge from the field with benefits of remotely gained data – a good insight into the interaction of site elements (a moraines, buried ice, meltwater channels, a glacier, lake, channels, bedrock) and a broader spatial and temporal perspective thanks to airborne imagery. Field investigations are necessary to process a realistic assessment of a lake outburst hazard. Many hazard assessments solely utilise remotely gained data. However, it is acknowledged that field survey provides a significant improvement in hazard assessment. McKillop and Clague (2007) mention knowledge of seepage, lake bathymetry, and its changes as important information for understanding dam hydraulic conditions. Bolch et al. (2008) highlight subsurface glacier meltwater routing, which we see as extremely important as well, together with buried ice distribution. At the Adygine complex, the ERT technique helped to discover an extensive ice core near Lake 1, buried under a considerably thick (8-10 m) layer of debris. A similar structure was observed, for example, at the moraine dam of Thulagi glacier lake, Himalayas (Pant and Reynolds, 2000). The seepage routes and hydrological processes within moraine dams were also examined with SP and ERT in Thompson et al. (2012) at Miage glacier, Italian Alps. The presented evaluation strategy combines knowledge from the field with benefits of remotely gained data – a good insight into the interaction of site elements (moraines, buried ice, meltwater, glacier, lake, channels, bedrock) and a broader spatial and temporal perspective thanks to airborne imagery. Remote sensing has proved to be a very useful tool in the field of environmental studies and is the basis for many hazard assessments, e.g. Allen et al. (2016), Bolch et al. (2008), Huggel et al. (2004), and Allen et al. (2016), McKillop and Clague (2007), and Huggel et al. (2004). Comprehensive hazard assessments elaborated as a basis for wide usage are, for example, GAPHAZ technical document (Allen et al. GAPHAZ, 2017), the strategy prepared by ICIMOD, focused on the high-mountain region of Himalayas-Karakoram (ICIMODves et al., 2011), and a useful summary of various lake outburst hazard assessments is also provided in Emmer and Vilimek (2013).

For a first, large-scale outburst hazard assessment, the possible triggers are often represented solely by a fall of mass into a lake (e.g. Allen et al., 2016). This trigger (including ice avalanche, landslide, and rockfall) is easy to assess. Evaluation is based solely on a relative terrain elevation at the site, which can be derived from a DEM/DTM. The presented procedure, on the contrary, aims to encompass all trigger factors that could have the capacity to lower dam's or lake basin's stability and

cause lake drainage. However, there are still some limitations to a full understanding of the varying mechanisms of lake outbursts. We did not include permafrost degradation as a separate trigger, but we consider it one of the main factors which can increase the hazard in future, as presented for the Alps by Haeberli et al. (2017~~6~~). The lower part of the site is situated at an altitude of 3500 m a.s.l., which is considered the current interface between continuous and discontinuous permafrost in ~~the~~ Northern Tien Shan (Marchenko et al., 2007). An earthquake is definitely a phenomenon that can destabilise a structure from unconsolidated material, ~~a~~ Although e.g. McKillop and Clague (2007) decided not to include it in their hazard assessment due to low spatial variability, ~~we consider it as an important factor~~. Several major earthquakes with epicentres in the vicinity of Kyrgyz Ala-Too were reported in the 20th century. The last case was the M7.5 quake near Suusamyr (~~ca 50 km from Adygine~~) in 1992, ~~about 50 km from Adygine~~. ~~Also an i~~ Although increased inflow due to heavy rainfall was reported to cause moraine dam failure (Yamada, 1998), ~~but~~ such events are not common in the ~~studied~~ region. Heavy rains ~~were have been~~ reported to trigger a debris flow (Zaginaev et al., 2016), but ~~have were~~ not ~~been connected-linked~~ to a lake outburst.

Glacier retreat in our site's case may not lead to new avalanche-starting zones as described by Haeberli et al. (2017~~6~~), but the rising MAAT could influence the glacier thermal regime and cause a shift of certain parts from cold- to warm-based, and therefore lower ~~the~~ friction between the glacier bed and steep ice masses. Areas exposed after glacier recession often consist of unconsolidated material which, if steep, may become a potential starting zone of landslide or debris flow. The already exposed steep slopes may be destabilised due to melting of interstitial ice or, where present, degradation of mountain permafrost (Huggel et al., 2010). Formation of new lakes at higher elevations increases the hazard of the site, due to a possible cascade effect when even a small volume released could trigger the outburst of a lower-lying lake. Such situations are expected to occur in future and the potentially arising challenges should be addressed in advance (Haeberli et al., 2016b).

~~To further explain our motivation to incorporate on-site research into hazard assessment,~~ We would like to draw attention to the ~~few scarcity of~~ research papers supported with field data from the region of Central Asia. A well-observed site is Lake Merzbacher and its dam, represented by the Southern Inylchek glacier, with the outburst history described by Glazirin (2010). From the latest examples, Narama et al. (2017) studied supraglacial lakes in the ~~c~~ Central Tien Shan, focusing on hydrological parameters of these small-sized and often temporary lakes, and Erokhin et al. (2017) compared two outbursts from a non-stationary glacial lake and presented hazards linked to lakes that form in an intramorainic depression. The phenomenon of repeated debris flow activity triggered by glacier meltwater release, was studied by Solomina et al. (1994) using lichenometry, and recently by Zaginaev et al. (2016) by dendrochronological methods. Such studies are a very welcome contribution to assist in the improved understanding of GLOF-related processes and influencing factors.

5 Conclusion

The presented paper aims to describe the impact of glacier retreat on its forefield, to highlight the differences in evolution and outburst hazard of proglacial lakes, and to promote a more field-based regionally-specified approach to hazard assessment.

Main results concerning the study site:

- The glacier is subjected to relatively fast recession comparable to other glaciers in Tien Shan, since 1962 it has retreated on average 11.5 m per year. By 2050, it's expected to shrink to 55.6-73.2 % of its 2012 extent.

- As a consequence, glacier runoff will change in following decades. Specifically, the beginning of ablation season is supposed to occur earlier compared to current situation, and the peak runoff from melting snow will very likely shift from mid-June to mid-May, resulting in slightly earlier start of glacier ice melting.

- A three-level cascade of glacial lakes formed in the glacier forefield with the largest Lake 2 detaining volume of about 200 000 m³. However, due to its stable surface drainage and no contact with glacier tongue it terminated its development in 1990s. Two other lakes have potential to grow, Lake 1 thanks to filling up and melting of buried ice, Lake 3 by further glacier retreat. The latter is currently the most dynamic one, it formed in 2005 and till present it has expanded to volume of 106 000 m³ and depth of over 14 m.

- Lake 1 and Lake 3 were categorised into medium hazard mainly due to their subsurface drainage and presence of buried ice in their vicinity. Despite the large size, outburst hazard of Lake 2 was assessed as low. Destabilisation of steep slopes, exposure and melting of buried ice, and changes in glacier runoff may further deteriorate stability of Lake 1 and Lake 3 and lead to increase of the outburst hazard in future.

A very similar development of other glacier complexes in this region is expected, runoff peak occurring at present or near future, gradual melting of buried ice, and formation of new lakes. This will result in new outburst hazards that can arise in a relatively short time. One of the main outputs of the study is an analysis of lakes' development dynamics, which indicate lake's potential to grow and the related outburst hazard. As we documented, the lake size is not as important a factor in terms of hazard, we would rather emphasize the influence of buried ice (especially in the dry region of Central Asia) and unpredictability of subsurface drainage channels. In terms of future hazard change, we would like to draw attention to the influence of glacier runoff. Expected extension of ablation season and related activity of glacial lakes may lead to increased outburst hazard. The prolonged period of melting season in relation to buried ice will result in higher potential for alteration of hydrological network of drainage channels. Further research should be dedicated to hydrological connections in proglacial morainic moraine environments and interactions of subsurface channels with buried ice, as there is still insufficient understanding of these processes. Such research would indeed increase the reliability of lake hazard assessments.

Competing interests. The authors declare that they have no conflict of interest.

Author contribution. KF, MŠ, and BJ carried out the field work and processed the obtained data. KF designed the hazard assessment, produced the figures, and wrote the manuscript with contribution of AN and WS for the model part. ZE provided ice-thickness data from GPR survey, VB provided results of the ERT and SP surveys. AN and WS ran the glacier evolution model, HH supervised the EURAS-CLIMPACT project and initiated formation of this joint paper. All authors contributed to improvement of the paper. ~~HH~~

Acknowledgements. Our great thanks belong to Sergey Erokhin for providing support essential for successful field work, valuable material and consulting of the hazard situation in Kyrgyz Ala-Too. We would like to thank Zbyněk Engel for providing information on glacier ice thickness, and Vitalii Zaginaev for reliable help with field work activities. ~~We also, thank~~ Stefan Reisenhofer for performing the downscaling of climate data, Hermann Häusler for valuable consultation, and Matthias Huss for providing the GERM glacier model. The work connected to future development of Adygine glacier was a part of the project EURAS-CLIMPACT. We highly appreciate the work of anonymous reviewers as their constructive comments helped to improve the manuscript substantially.

Appendices

Table A1. Morphometry of lakes at Adygin site. Lakes 3-9 are the most dynamic ones situated near glacier terminus. A hyphen is used when a measurement was not carried out for the individual lake. Asterisk signifies a value obtained from a satellite image.

5

	Lake	1	2	3	4	5	6	7	8	9
Area (m²)	2007 (2005)	3 390	32 700	5 710	3 230	3 230	3 350	1 860	0	0
	2008	-	31 900	7 030	3 680	1 580	3 410	1 910	0	0
	2012	-	-	8 800	5 100	740	3 800	1 280	1 130	0
	2013	-	-	9 870	4 870	0	3 405	0	558	0
	2015	-	31 700	14 880	4 540	0	0	0	0	1 540
	2017	2 700*	31 900*	16 020	4 200*	0	2 700*	0	0	0
Length (m)	2007	109	-	161	90	120	106	85	0	0
	2008	-	364	166	92	94	113	85	0	0
	2012	-	-	168	105	54	113	65	60	0
	2013	-	-	174	106	0	113	0	67	0
	2015	-	390	198	100	0	0	0	0	70
	2017	110*	390*	200	95*	0	90*	0	0	0
Max depth (m)	2007 (2005)	4.4	21.6	3.8	-	-	-	-	0	0
	2008	-	22.2	-	-	-	-	-	0	0
	2012	-	-	10.3	2.4	-	3	0.5	1.8	0
	2015	-	21.3	12.3	2.4	0	0	0	0	-
	2017	-	-	14	-	0	-	0	0	-
Volume (m³)	2007 (2005)	6 290	208 000	7 800	-	-	-	-	0	0
	2008	-	206 000	-	-	-	-	-	0	0
	2012	-	-	29 300	3 900	-	3 800	500	900	0
	2015	-	194 000	72 000	3 630	0	0	0	0	-
	2017	-	-	106 000	-	0	-	0	0	-

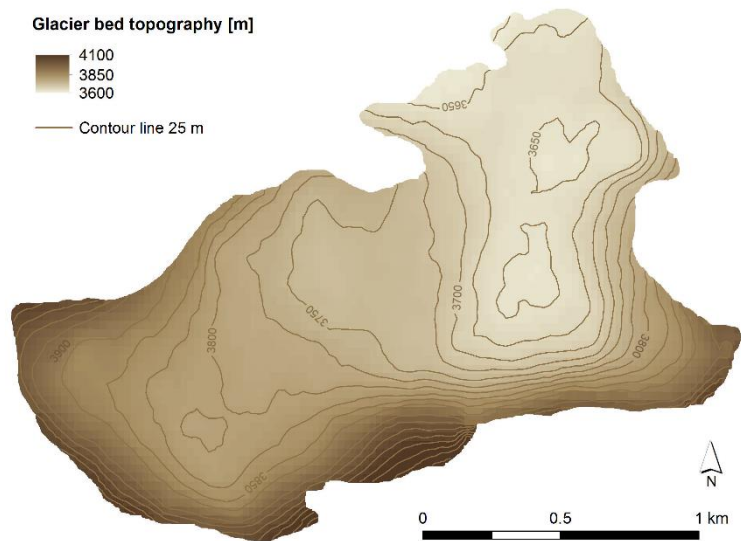


Figure A2. Adygin glacier bed topography derived from the GPR survey.

References

- Aizen, V. B., Aizen, E. M., Melack, J. M.: Precipitation, melt and runoff in the northern Tien Shan, *J Hydrol*, 186, 229-251, doi:10.1016/S0022-1694(96)03022-3, 1996.
- 5 [Aizen, V. B., Kuzmichenok, V. A., Surazakov, A. B., Aizen, E. M.: Glacier changes in the central and northern Tien Shan during the last 140 years based on surface and remote-sensing data, *Annals of Glaciology*, 43, 202-213, doi: 10.3189/172756406781812465, 2006.](#)
- 10 Aizen, V. B., Kuzmichenok, V. A., Surazakov, A. B., Aizen, E. M.: Glacier changes in the Tien Shan as determined from topographic and remotely sensed data, *Global Planet Change*, 56(3), 328-340, doi:10.1016/j.gloplacha.2006.07.016, 2007a.
- Aizen, V. B., Aizen, E. M., Kuzmichonok, V. A.: Glaciers and hydrological changes in the Tien Shan: simulation and prediction, *Environ Res Lett*, 2(4), 045019, doi:10.1088/1748-9326/2/4/045019, 2007b.
- 15 Alean, J.: Ice avalanches: some empirical information about their formation and reach, *J Glaciol*, 31(109), 324–333, doi:10.3189/S0022143000006663, 1985.
- Allen, S. K., Linsbauer, A., Randhawa, S. S., Huggel, C., Rana, P., Kumari, A.: Glacial lake outburst flood risk in Himachal Pradesh, India: an integrative and anticipatory approach considering current and future threats, *Nat Hazards*, 84(3), 1741-1763, doi:10.1007/s11069-016-2511-x, 2016.
- 20 Awal, R., Nakagawa, H., Fujita, M., Kawaike, K., Baba, Y., Zhang, H.: Study on Piping Failure of Natural Dam, *Annals of Disas. Prev. Res. Inst., Kyoto Univ.*, 54B, doi: 10.2208/jscejhe.67.i 157, 2011.
- 25 [Barandun, M., Huss, M., Sold, L., Farinotti, D., Azisov, E., Salzmann, N., Usabaliev, R., Merkushkin, A., Hoelzle, M.: Re-analysis of seasonal mass balance at Abramov glacier 1968–2014, *J Glaciol*, 61\(230\), 1103–1117, doi:10.3189/2015JG14J239, 2015.](#)
- Benestad, R.E.: Empirical-statistical downscaling in climate modeling. *Eos Trans Am Geophys Union*, 85, 417-422, doi:10.1029/2004EO420002, 2004.
- 30 Benestad, R.E., Hanssen-Bauer, I., Førland, E.J.: An evaluation of statistical models for downscaling precipitation and their ability to capture long-term trends, *Int J Climatol*, 27, 649–665, doi: 10.1002/joc.1421, 2007.
- 35 Benn, D. I., Bolch, T., Hands, K., Gulley, J., Luckman, A., Nicholson, L. I., Quincey, D., Thompson, S., Toumi, R., Wiseman, S.: Response of debris-covered glaciers in the Mount Everest region to recent warming, and implications for outburst flood hazards, *Earth Sci Rev*, 114(1), 156-174, doi: 10.1016/j.earscirev.2012.03.008, 2012.
- 40 Bolch, T.: Glacier area and mass changes since 1964 in the Ala Archa Valley, Kyrgyz Ala-Too, northern Tien Shan, *Lëd i Sneg*, 55(1), 28-39, doi: 10.15356/2076-6734-2015-1-28-39, 2015.
- Bolch, T., Buchroithner, M. F., Peters, J., Baessler, M., Bajracharya, S.: Identification of glacier motion and potentially dangerous glacial lakes in the Mt. Everest region/Nepal using spaceborne imagery, *Nat Hazards Earth Sys*, 8(6), 1329-1340, doi: 10.5194/nhess-8-1329-2008, 2008.
- 45 Bolch, T., Peters, J., Yegorov, A., Pradhan, B., Buchroithner, M., Blagoveshchensky, V.: Identification of potentially dangerous glacial lakes in the northern Tien Shan, *Nat Hazards*, 59(3), 1691-1714, doi: 10.1007/s11069-011-9860-2, 2011.

- Chen, Y., Xu, C., Chen, Y., Li, W., Liu, J.: Response of glacial-lake outburst floods to climate change in the Yarkant River basin on northern slope of Karakoram Mountains, China, *Quatern Int*, 226(1), 75-81, doi: 10.1016/j.quaint.2010.01.003, 2010.
- 5 Clague, J. J., Evans, S. G.: A review of catastrophic drainage of moraine-dammed lakes in British Columbia, *Quatern Sci Rev*, 19(17), 1763-1783, doi: 10.1016/S0277-3791(00)00090-1, 2000.
- 10 [Colonia, D., Torres, J., Haerberli, W., Schauwecker, S., Braendle, E., Giraldez, C., Cochachin, A.: Compiling an Inventory of Glacier-Bed Overdeepenings and Potential New Lakes in De-Glaciating Areas of the Peruvian Andes: Approach, First Results, and Perspectives for Adaptation to Climate Change, *Water*, 9\(5\), 336-354, doi: 10.3390/w9050336, 2017.](#)
- 15 [Davis, J. L., Annan, A. P.: Ground penetrating radar for high-resolution mapping of soil and rock stratigraphy, *Geophys Prospect*, 37\(5\), 531-551, doi: 10.1111/j.1365-2478.1989.tb02221.x, 1989.](#)
- Ding, Y., Liu, J.: Glacier lake outburst flood disasters in China, *Ann Glaciol*, 16, 180-184, 1992.
- Dussailant, A., Benito, G., Buytaert, W., Carling, P., Meier, C., Espinoza, F.: Repeated glacial-lake outburst floods in Patagonia: an increasing hazard?, *Nat Hazards*, 54(2), 469-481, doi: 10.1007/s11069-009-9479-8, 2010.
- 20 Emmer, A., Cochachin, A.: The causes and mechanisms of moraine-dammed lake failures in the Cordillera Blanca, North American Cordillera, and Himalayas, *AUC Geographica*, 48(2), 5-15, doi: 10.14712/23361980.2014.23, 2013.
- 25 [Emmer, A., Vilimek, V.: Lake and breach hazard assessment for moraine-dammed lakes: an example from the Cordillera Blanca \(Peru\), *Nat Hazard Earth Sys*, 13\(6\), 1551-1565, doi: 10.5194/nhess-13-1551-2013, 2013.](#)
- Engel, Z., Sobr, M., Erokhin, S.A.: Changes of Petrov glacier and its proglacial lake in the Akshirak massif, central Tien Shan, since 1977, *J Glaciol*, 58(208), 388-398, doi: 10.3189/2012JoG11J085, 2012.
- 30 [Erokhin, S. A.: Monitoring of hazardous lakes in Kyrgyzstan. PhD thesis, 220 pp. Kyrgyz National Academy of Sciences, Institute of Water Problems and Hydropower, 2012. \(in Russian\)](#)
- [Erokhin S. A., Zaginaev V. V.: Forecasting of hazards from mountain lakes based on the catalogue. Report book of Kyrgyz Ministry of Emergency Situations, Part III, 542-555, 2016. \(in Russian\)](#)
- 35 [Erokhin, S.A., Zaginaev, V.V.: Forecast of the outburst of mountain lakes in Kyrgyzstan based on their catalogue, Book 2016 Part III, Ministry of emergency situations of Kyrgyz Republic, 2016. \(in Russian\)](#)
- 40 Erokhin, S.A., Zaginaev, V.V., Meleshko, A.A., Ruiz-Villanueva, V., Petrakov, D.A., Chernomorets, S. S, Viskhadzhieva, K.S., Tutubalina, O.V., Stoffel, M.: Debris flows triggered from non-stationary glacier lake outbursts: the case of the Teztor Lake complex (Northern Tian Shan, Kyrgyzstan), *Landslides*, 1-16, doi: 10.1007/s10346-017-0862-3, 2017.
- Falatkova, K.: Temporal analysis of GLOFs in high-mountain regions of Asia and assessment of their causes, *AUC Geographica*, 51(2), 145-154, doi: 10.14712/23361980.2016.12, 2016.
- 45 Falatkova, K., Sobr, M., Kocum, J., Jansky, B.: Hydrological regime of Adygine Lake, Tien Shan, Kyrgyzstan, *Geografie*, 119(4), 320-341, 2014.
- 50 Farinotti, D., Longuevergne, L., Moholdt, G., Duethmann, D., Mölg, T., Bolch, T., Vorogushin, S., Güntner, A.: Substantial glacier mass loss in the Tien Shan over the past 50 years, *Nat Geosci*, 8(9), 716-722, doi: 10.1038/ngeo2513, 2015.

- Farr, T.G., Rosen, P.A., Caro, E., Crippen, R., Duren, R., Hensley, S., Kobrick, M., Paller, M., Rodriguez, E., Roth, L., Seal, D., Shaffer, S., Shimada, J., Umland, J., Werner, M., Oskin, M., Burbank, D., Alsdorf, D.: The Shuttle Radar Topography Mission, *Rev Geophys*, 45(2), 583-585, doi: 10.1029/2005RG000183, 2007.
- 5 Frey, H., Haeberli, W., Linsbauer, A., Huggel, C., Paul, F.: A multi-level strategy for anticipating future glacier lake formation and associated hazard potentials, *Nat Hazards Earth Sys*, 10(2), 339-352, doi: 10.5194/nhess-10-339-2010, 2010.
- 10 [Frey, H., Machguth, H., Huss, M., Huggel, C., Bajracharya, S., Bolch, T., Kulkarni, A., Linsbauer, A., Salzmann, N., Stoffel, M.: Estimating the volume of glaciers in the Himalayan–Karakoram region using different methods, *Cryosphere*, 8\(6\), 2313–2333, doi: 10.5194/tc-8-2313-2014, 2014.](#)
- 15 Fischer, L., Purves, R. S., Huggel, C., Noetzli, J., Haeberli, W.: On the influence of topographic, geological and cryospheric factors on rock avalanches and rockfalls in high-mountain areas, *Nat Hazards Earth Sys*, 12(1), 241-254, doi: 10.5194/nhess-12-241-2012, 2012.
- 20 Fujita, K., Sakai, A., Nuimura, T., Yamaguchi, S., Sharma, R. R.: Recent changes in Imja Glacial Lake and its damming moraine in the Nepal Himalaya revealed by in situ surveys and multi-temporal ASTER imagery, *Environ Res Lett*, 4(4), 1-7, 2009.
- 25 [GAPHAZ 2017: Assessment of Glacier and Permafrost Hazards in Mountain Regions – Technical Guidance Document. Prepared by Allen, S., Frey, H., Huggel, C. et al. Standing Group on Glacier and Permafrost Hazards in Mountains \(GAPHAZ\) of the International Association of Cryospheric Sciences \(IACS\) and the International Permafrost Association \(IPA\). Zurich, Switzerland / Lima, Peru, 72 pp, 2017.](#)
- 30 Glazirin, G. E.: The reaction of glaciers in west Tien Shan to climate changes, *Zeitschrift fur Gletscherkunde und Glacialgeologie*, 32, 33-39, 1996.
- 35 Glazirin, G. E.: A century of investigations on outbursts of the ice-dammed lake Merzbacher (Central Tien Shan), *Austrian J Earth Sci*, 103(2), 171-179, 2010.
- 40 [Google Earth Pro 7.3.2.5491. \(August 30, 2014\): Adygine, Kyrgyzstan. 42°30'11" N 74°26'20" E. DigitalGlobe 2018, <http://www.earth.google.com> \[January 10, 2018\].](#)
- 45 Gorbunov, A. P.: Monitoring the evolution of permafrost in the Tien Shan, *Permafrost Periglac*, 7(3), 297-298, doi: 10.1002/(SICI)1099-1530(199609)7:3%3C297::AID-PPP223%3E3.0.CO;2-C, 1996.
- [Haeberli, W., Buetler, M., Huggel, C., Friedli, T. L., Schaub, Y., Schleiss, A. J.: New lakes in deglaciating high-mountain regions—opportunities and risks, *Climatic change*, 139\(2\), 201-214, doi: 10.1007/s10584-016-1771-5, 2016b.](#)
- [Haeberli, W., Linsbauer, A., Cochachin, A., Salazar, C., Fischer, U. H.: On the morphological characteristics of overdeepenings in high-mountain glacier beds, *Earth Surf Proc Land*, 41\(13\), 1980-1990, doi: 10.1002/esp.3966, 2016a.](#)
- Haeberli, W., Schaub, Y., Huggel, C.: Increasing risks related to landslides from degrading permafrost into new lakes in deglaciating mountain ranges, *Geomorphology*, 293, 405-417, doi: 10.1016/j.geomorph.2016.02.009, 2017.
- Haemmig, C., Huss, M., Keusen, H., Hess, J., Wegmüller, U., Ao, Z., Kulubayi, W.: Hazard assessment of glacial lake outburst floods from Kyagar glacier, Karakoram mountains, China, *Ann Glaciol*, 55(66), 34-44, doi: 10.3189/2014AoG66A001, 2014.

- Hock, R.: A distributed temperature-index ice- and snowmelt model including potential direct solar radiation, *J Glaciol*, 45, 101–111, doi: 10.3189/S0022143000003087, 1999.
- 5 Huggel, C., Haeberli, W., Kääb, A., Bieri, D., Richardson, S.: An assessment procedure for glacial hazards in the Swiss Alps, *Can Geotech J*, 41(6), 1068-1083, doi: 10.1139/t04-053, 2004.
- Huggel, C., Fischer, L., Schneider, D., Haeberli, W.: Research advances on climate-induced slope instability in glacier and permafrost high-mountain environments, *Geographica Helvetica*, 65(2), 146-156, doi: 10.5194/gh-65-146-2010, 2010.
- 10 Huss, M., Farinotti, D., Bauder, A., Funk, M.: Modelling runoff from highly glacierized alpine drainage basins in a changing climate, *Hydrol Process*, 22(19), 3888-3902, doi: 10.1002/hyp.7055, 2008.
- [Huss, M., Farinotti, D.: Distributed ice thickness and volume of all glaciers around the globe. *J Geophys Res-Earth*, 117\(F4\), doi: 10.1029/2012jf002523, 2012.](https://doi.org/10.1029/2012jf002523)
- 15 Huss, M., Zemp, M., Joerg, P.C., Salzmann, N.: High uncertainty in 21st century runoff projections from glacierized basins, *J. Hydrol.* 510, 35–48, doi: 10.1016/j.jhydrol.2013.12.017, 2014.
- Huss, M., Fischer, M.: Sensitivity of very small glaciers in the Swiss Alps to future climate change, *Frontiers in Earth Science*, 4:34, 1-17, doi: 10.3389/feart.2016.00034, 2016.
- 20 [ICIMOD 2011: Glacial lakes and glacial lake outburst floods in Nepal. Kathmandu: ICIMOD, 109 pp, 2011.](#)
- [IPCC 2007: Climate Change 2007: The Physical Science Basis. Contribution of Working Group I to the Fourth Assessment Report of the Intergovernmental Panel on Climate Change \[Solomon, S., D. Qin, M. Manning, Z. Chen, M. Marquis, K.B. Averyt, M. Tignor, H.L. Miller \(eds.\)\]. Cambridge University Press, Cambridge, United Kingdom and New York, NY, USA, 996 pp, 2007.](#)
- 25 [IPCC 2013: Climate Change 2013: The Physical Science Basis. Contribution of Working Group I to the Fifth Assessment Report of the Intergovernmental Panel on Climate Change \[Stocker, T.F., D. Qin, G.-K. Plattner, M. Tignor, S.K. Allen, J. Boschung, A. Nauels, Y. Xia, V. Bex, P.M. Midgley \(eds.\)\]. Cambridge University Press, Cambridge, United Kingdom and New York, NY, USA, 1535 pp, 2013.](#)
- 30 [Ives, J. D., Shrestha, R. B., Mool, P. K.: Formation of glacial lakes in the Hindu Kush Himalayas and GLOF risk assessment. Kathmandu: ICIMOD, 2010.](#)
- 35 Janský, B., Šobr, M., Engel, Z.: Outburst flood hazard: case studies from the Tien-Shan Mountains, Kyrgyzstan, *Limnologica*, 40(4), 358-364, doi: 10.1016/j.limno.2009.11.013, 2010.
- 40 Kalnay, E., Kanamitsu, M., Kistler, R., Collins, W., Deaven, D., Gandin, L., Iredell, M., Saha, S., White, G., Woollen, J., Zhu, Y., Leetmaa, A., Reynolds, R., Chelliah, M., Ebisuzaki, W., Higgins, W., Janowiak, J., Mo, K.C., Ropelewski, C., Wang, J., Jenne, R., Joseph, D.: The NCEP/NCAR 40-Year Reanalysis Project. *Bull Am Meteorol Soc*, 77, 437–471, doi: 10.1175/1520-0477(1996)077%3C0437:TNYRP%3E2.0.CO;2, 1996.
- 45 [Kovalenko, N. V., Petrakov, D. A., Lavrientiev, I. I., Usabaliev, R. A., Bykovskiy, A. I., Erokhin, S. A.: Russian-Kyrgyz radar monitoring of the Tien Shan glaciers in recent years. Proceedings of the International Conference "Remote and terrestrial sensing of the Earth in Central Asia. CAIAG, 8-9 September, Bishkek, Kyrgyzstan, 2014.](#)

- Kronenberg, M., Barandun, M., Hoelzle, M., Huss, M., Farinotti, D., Azisov, E., Usabaliev, R., Gafurov, A., Petrakov, D., Kääb, A.: Mass balance reconstruction for Glacier No. 354, Tien Shan, from 2003 to 2014, *Ann Glaciol*, 57(71), 92-102, doi: 10.3189/2016Aog71A032, 2016.
- 5 Lei, Y., Yao, T., Yi, C., Wang, W., Sheng, Y., Li, J., Joswiak, D.: Glacier mass loss induced the rapid growth of Linggo Co on the central Tibetan Plateau, *J Glaciol*, 58(207), 177-184, doi: 10.3189/2012JoG11J025, 2012.
- ~~Li, Y., Li, Y.: Topographic and geometric controls on glacier changes in the central Tien Shan, China, since the Little Ice Age, *Ann Glaciol*, 55(66), 177-186, doi: 10.3189/2014Aog66A031, 2014.~~
- 10 Li, S., Zhan, H., Lai, Y., Sun, Z., Pei, W.: The coupled moisture-heat process of permafrost around a thermokarst pond in Qinghai-Tibet Plateau under global warming, *J Geophys Res-Earth*, 119(4), 836-853, doi: 10.1002/2013JF002930, 2014.
- Linsbauer, A., Paul, F., Hoelzle, M., Frey, H., Haeberli, W.: The Swiss Alps without glaciers—a GIS-based modelling approach for reconstruction of glacier beds, *Proceedings of Geomorphometry*, 31, 243-247, 2009.
- 15 Linsbauer, A., Paul, F., Haeberli, W.: Modeling glacier thickness distribution and bed topography over entire mountain ranges with GlabTop: Application of a fast and robust approach, *J Geophys Res-Earth*, 117(F3), doi: 10.1029/2011jf002313, 2012.
- 20 Linsbauer, A., Frey, H., Haeberli, W., Machguth, H., Azam, M. F., Allen, S.: Modelling glacier-bed overdeepenings and possible future lakes for the glaciers in the Himalaya—Karakoram region, *Ann Glaciol*, 57(71), 119-130, doi: 10.3189/2016aog71a627, 2016.
- 25 Liu, J. J., Cheng, Z. L., Su, P. C.: The relationship between air temperature fluctuation and Glacial Lake Outburst Floods in Tibet, China, *Quatern Int*, 321, 78-87, doi: 10.1016/j.quaint.2013.11.023, 2014.
- Llibouty, L., Arnao, B. M., Pautre, A., Schneider, B.: Glaciological problems set by the control of dangerous lakes in Cordillera Blanca, Peru. I. Historical failures of morainic dams, their causes and prevention, *J Glaciol*, 18(79), 239-254, doi: 30 10.3189/S0022143000029610, 1977.
- Loke, M. H., Barker, R. D.: Least-squares deconvolution of apparent resistivity pseudosections, *Geophysics*, 60(6), 1682-1690, doi: 10.1190/1.1443900, 1995.
- 35 Marchenko, S. S., Gorbunov, A. P., Romanovsky, V. E.: Permafrost warming in the Tien Shan mountains, central Asia, *Global Planet Change*, 56(3), 311-327, doi: 10.1016/j.gloplacha.2006.07.023, 2007.
- McKillop, R. J., Clague, J. J.: A procedure for making objective preliminary assessments of outburst flood hazard from moraine-dammed lakes in southwestern British Columbia, *Nat Hazards*, 41(1), 131-157, doi: 10.1007/s11069-006-9028-7, 40 2007.
- Mergili, M., Schneider, J. F.: Regional-scale analysis of lake outburst hazards in the southwestern Pamir, Tajikistan, based on remote sensing and GIS, *Nat Hazards Earth Sys*, 11(5), 1447-1462, 2011.
- 45 Mergili, M., Müller, J. P., Schneider, J. F.: Spatio-temporal development of high-mountain lakes in the headwaters of the Amu Darya River (Central Asia), *Global Planet Change*, 107, 13-24, doi: 10.5194/nhess-11-1447-2011, 2013.
- Narama, C., Kääb, A., Duishonakunov, M., Abdrakhmatov, K.: Spatial variability of recent glacier area changes in the Tien Shan Mountains, Central Asia, using Corona (~ 1970), Landsat (~ 2000), and ALOS (~ 2007) satellite data, *Global Planet Change*, 71(1), 42-54, doi: 10.1016/j.gloplacha.2009.08.002, 2010.
- 50

5 Narama, C., Daiyrov, M., Tadono, T., Yamamoto, M., Kääh, A., Morita, R., Ukita, J.: Seasonal drainage of supraglacial lakes on debris-covered glaciers in the Tien Shan Mountains, Central Asia, *Geomorphology*, 286, 133-142, doi: 10.1016/j.geomorph.2017.03.002, 2017.

Nash, J. E., Sutcliffe, J. V.: River flow forecasting through conceptual models part I—A discussion of principles, *J Hydrol*, 10(3), 282-290, doi: 10.1016/0022-1694(70)90255-6, 1970.

10 [Niederer, P., Bilenko, V., Ershova, N., Hurni, H., Yerokhin, S., Maselli, D.: Tracing glacier wastage in the Northern Tien Shan \(Kyrgyzstan/Central Asia\) over the last 40 years, *Climatic Change*, 86\(1\), 227-234, doi: 10.1007/s10584-007-9288-6, 2008.](#)

Noetzli, J., Hoelzle, M., Haerberli, W.: Mountain permafrost and recent Alpine rock-fall events: a GIS-based approach to determine critical factors, *Proceedings of the 8th International Conference on Permafrost*, 2, 827-832, 2003.

15 [Paul, F., Linsbauer, A.: Modeling of glacier bed topography from glacier outlines, central branch lines, and a DEM, *Int J Geogr Inf Sci*, 26\(7\), 1173-1190, doi: 10.1080/13658816.2011.627859, 2012.](#)

20 [Petraikov, D. A., Lavrientiev, I. I., Kovalenko, N. V., Usabaliev, R. A.: Ice thickness, volume and current changes of the Sary-Tor glacier area \(Ak-Shyirak Massif, Inner Tian Shan\), *Earth's Cryosphere*, 18\(3\), 83-91, 2014.](#)

Pieczonka, T., Bolch, T., Junfeng, W., Shiyin, L.: Heterogeneous mass loss of glaciers in the Aksu-Tarim Catchment (Central Tien Shan) revealed by 1976 KH-9 Hexagon and 2009 SPOT-5 stereo imagery, *Remote Sens Environ*, 130, 233-244, doi: 10.1016/j.rse.2012.11.020, 2013.

25 Richardson, S. D., Reynolds, J.M.: Degradation of ice-cored moraine dams: implications for hazard development, *Debris-Covered Glaciers*, Proceedings of a workshop, Seattle, Washington, USA, Sept 2000.

30 Roeckner, E., Bauml, G., Bonaventura, L., Brokopf, R., Esch, M., Giorgetta, M., Hagemann, S., Kirchner, I., Kornblueh, L., Manzini, E., Rhodin, A., Schlese, U., Schulzweida, U., Tompkins, A.: The atmospheric general circulation model ECHAM5. Part I: Model description, Rep. 349, Max Planck Institute for Meteorology, 127 pp, 2003.

35 [Shatravin V.I.: Reconstruction of the Pleistocene and Holocene glaciations of the Tian-Shan and Pamir: new results. *International Workshop, July 22–23, Institute of Soil Science and Soil Geography, University of Bayreuth, Germany, 2000.*](#)

Shrestha, A. B., Eriksson, M., Mool, P., Ghimire, P., Mishra, B., Khanal, N. R.: Glacial lake outburst flood risk assessment of Sun Koshi basin, Nepal, *Geomat Nat Haz Risk*, 1(2), 157-169, doi: 10.1080/19475701003668968, 2010.

40 Sobr, M., Jansky, B.: The morphometric parameters of glacial lakes in the Bohemian Forest, *Silva Gabreta*, 22, 31-61, 2016.

Solomina, O. N., Savoskul, O. S., Cherkinsky, A. E.: Glacier variations, mudflow activity and landscape development in the Aksay Valley (Tian Shan) during the late Holocene, *Holocene*, 4(1), 25-31, doi: 10.1177/095968369400400104, 1994.

45 Sorg, A., Bolch, T., Stoffel, M., Solomina, O., Beniston, M.: Climate change impacts on glaciers and runoff in Tien Shan (Central Asia), *Nat Clim Change*, 2(10), 725-731, 2012.

Sorg, A., Huss, M., Rohrer, M., Stoffel, M.: The days of plenty might soon be over in glacierized Central Asian catchments, *Environ Res Lett*, 9(10), 104018, doi: 10.1038/nclimate1592, 2014.

- [Thompson, S., Kulessa, B., Luckman, A.: Integrated electrical resistivity tomography \(ERT\) and self-potential \(SP\) techniques for assessing hydrological processes within glacial lake moraine dams, J Glaciol, 58\(211\), 849-858, doi: 10.3189/2012jog11j235, 2012.](#)
- 5 Wang, X., Siegert, F., Zhou, A. G., Franke, J.: Glacier and glacial lake changes and their relationship in the context of climate change, Central Tibetan Plateau 1972–2010, *Global Planet Change*, 111, 246-257, doi:10.1016/j.gloplacha.2013.09.011, 2013.
- 10 Wang, L., Li, Z., Wang, F., Edwards, R.: Glacier shrinkage in the Ebinur lake basin, Tien Shan, China, during the past 40 years, *J Glaciol*, 60(220), 245-254, doi: 10.3189/2014JG13J023, 2014.
- WGMS: Fluctuations of Glaciers Database, World Glacier Monitoring Service, Zurich, Switzerland. Online access: <http://dx.doi.org/10.5904/wgms-fog-2017-10>, 2017.
- 15 Xu, D.: Characteristics of debris flow caused by outburst of glacial lake in Boqu river, Xizang, China, 1981, *GeoJournal*, 17(4), 569-580, doi: 10.1007/BF00209443, 1988.
- Yamada, T.: Glacier lake and its outburst flood in the Nepal Himalaya, Data Center for Glacier Research, Japanese Society of Snow and Ice, Tokyo, 1998.
- 20 Zaginaev, V.: The Teztor lake outburst event (northern Tien-Shan). Monitoring, forecasting of hazardous processes and phenomena in the territory of the Kyrgyz Republic, Ministry of Emergency Situations of the Kyrgyz Republic, 10th ed., 563-570, 2013.
- 25 Zaginaev, V., Ballesteros-Cánovas, J. A., Erokhin, S., Matov, E., Petrakov, D., Stoffel, M.: Reconstruction of glacial lake outburst floods in northern Tien Shan: Implications for hazard assessment, *Geomorphology*, 269, 75-84, doi:10.1016/j.geomorph.2016.06.028, 2016.
- 30 Zhang, G., Yao, T., Piao, S., Bolch, T., Xie, H., Chen, D., Gao, Y., O'Reilly, C.M., Shum, C.K., Yang, K., Yi, S.: Extensive and drastically different alpine lake changes on Asia's high plateaus during the past four decades, *Geophys Res Lett*, 44(1), 252-260, doi: 10.1002/2016GL072033, 2017.
- 35 Zhao, Q., Zhang, S., Ding, Y. J., Wang, J., Han, H., Xu, J., Zhao, C., Guo, W., Shangguan, D.: Modeling hydrologic response to climate change and shrinking glaciers in the highly Glacierized Kunma Like River catchment, Central Tian Shan, *J Hydrometeorol*, 16(6), 2383-2402, doi: 10.1175/JHM-D-14-0231.1, 2015.
- [Emmer, A., & Vilímek, V. \(2013\). Lake and breach hazard assessment for moraine dammed lakes: an example from the Cordillera Blanca \(Peru\). *Natural Hazards and Earth System Sciences*, 13\(6\), 1551.](#)