

## Response to Reviewers and Editor

We are grateful for the constructive and detailed commentary provided by the associate editor and the two anonymous reviewers. We have revised the manuscript to address all comments and responded to those comments below in *italics*. The revised manuscript with changes tracked is shown below our responses.

### Anonymous Referee 1 Comments:

Scott and Wohl present an analysis and interpretation of a dataset containing soil organic matter concentrations on floodplain soils. Due to the dynamic alluvial nature, these soils often have large carbon stores and function differently than soils on hill slopes. Scott and Wohl have made a valuable step in understanding the geomorphic factors controlling the distribution of organic matter in these profiles. This contribution will be important to the understanding of how carbon is mobilized and transported to long-term depositional areas. I thank the authors for a very well written manuscript and I have only a few editorial comments. I have a few moderately important suggestions that the authors should consider and respond to:

*Thank you. We appreciate your comments, especially in bringing up new avenues of thought for considering our results.*

1. The redox condition of soils is hugely important in determining the fate of associated carbon (as noted by your discussion on soil moisture and respiration). This has been recently been brought to the fore by Keiluweit, et al. (2018). Changing redox condition in these soil profiles may be really important for destabilizing mineral associated carbon. But probably most important was that much of the deposited carbon was probably fixed in an “oxic” upland location - so that the stabilizing minerals (Fe) could be destabilized in the floodplain. The redoximorphic conditions of floodplain soils are complex since they it is more than just a simple function of depth and moisture since hyporheic flow can bring DO into portions of the profile and floodplain that may seem distal to the river. Soil morphological characterization including characterizing the mottling, gleying, and soil color could have helped with those hypotheses that moisture was important in destabilizing or preserving soil carbon (or that dryer sites have higher respiration). Where these sorts of observations made and recorded in a systematic way so that they could be included in the analysis? At any rate I think this emerging topic in soil carbon stabilization needs to be incorporated into the discussion.

*We appreciate the suggested reference and this new avenue of discussion. We unfortunately did not systematically record soil morphological characterization in the field, and as such can't directly speak to the impacts of variability in redoximorphic conditions on our results. However, after reading the reference you suggest and a couple others, we agree that this topic should be noted in our discussion.*

*We have added a few sentences to the 2<sup>nd</sup> paragraph of section 4.1, added a clause to a sentence in section 4.3, and added “redox condition” to the factors listed as controlling respiration rate in our conceptual model to discuss this topic.*

2. How does the dominant precipitation type affect erosion and sedimentation in a watershed? The Snoqualmie River is likely more dominated by rain than the Big Sandy which is likely more dominated by snow. Will this have an impact on what is mobilized by the river network (i.e. source of POM)? If the authors think so, then I suggest these topics be discussed.

*This isn't something we previously considered, and we appreciate you bringing it to our attention. We have reviewed the literature we are aware of on this topic (comparing snowmelt vs rain driven flows in terms of OM flux) and determined that there is insufficient evidence from that literature to make supported inferences regarding the potential effects of the variability in precipitation regime between these two basins on their resulting OC transport. While we acknowledge that precipitation regime likely has some effect on OM flux, we are too uncertain of the nature of that effect to appropriately discuss it here. In addition, our results indicate that in-situ OC production likely dominates the signals we observe in these floodplains. As such, we are unsure how precipitation regime might influence our results or interpretation, and we have thus not added a discussion of this topic to the manuscript.*

*For reference, the papers we reviewed are (as DOIs):*

*10.1007/s10533-009-9401-1*

*10.1007/s10533-011-9589-8*

*10.1007/s10533-010-9416-7*

*10.1002/esp.1882*

3. I would really like to see a figure summarizing the profile OC concentrations. I realize it could be complex. Something that shows means by depth (box plots? with actual data points in a lighter shade?). This would go a long way in illustrating that depth is the primary controller of OC concentrations in these profiles.

*Thanks for the suggestion. We like the idea of doing box plots with data points shown simultaneously. While we unfortunately were unable to plot profiles (i.e., line plots corresponding to each profile) in a way that was readable on a single chart, we have now made a figure that has boxplots showing OC concentrations binned in average depths, with points shown transparently for each bin. The only drawback is that the points aren't connected to group them by profile. However, we think this still provides a decent portrayal of the general trends of OC concentration with depth in our samples. We have added this figure to the results section and used it to provide a better topic sentence for the first paragraph in section 3.1.*

4. Soils in the Snoqualmie basin are dominated by Andisols and Spodosols which have a disproportionate ability to stabilize soil carbon (especially relative to the Big Sandy). Can you please discuss how the soil type might have affected the differences between the basins?

*Good point, thanks for bringing this up. We have chosen to integrate this idea in a few places, namely by citing a review on C storage in andic soils. First, we discuss this as a potential reason for our observation of higher maximum OC concentrations in the MF Snoqualmie. Second, we*

*have added the potential effects of soil mineralogy and chemistry on microbial respiration to our conceptual model (section 4.3)*

Other than those three comments:

Page 11 Line 25: This took me a couple times to figure out. Deposition of POM on the surface of the soil would be included in the first mechanism of this paragraph. I think you're trying to distinguish it from terrestrial processes (autochthonous inputs) and/or include it at the same time in this paragraph. You might be able to clear this up by dealing with the river deposition of allochthonous POM as a sort of confounding factor later in the discussion (or not).

*We see how this could be confusing. We were trying to separate OC inputs into either fine sediment or FPOM deposited by overbank flows and coarser OM deposited as litter or large wood. Re-reading this, we realize this distinction does not come across clearly, so we have instead organized these two categories by whether the input is autochthonous or allochthonous to improve clarity.*

Page 12 Line 5 (and throughout): I have mainly seen that O-horizon (litter and duff) floats away when floodplains are flooded. This material tends to be trapped downstream (e.g. log jams) and maybe it's these areas that are buried and able to preserve litter.

*We have now acknowledged this as a potential interaction between large wood and fine organic matter. However, we felt it was more appropriate to acknowledge this later in this section when summarizing our interpretations.*

References cited: Keiluweit M, Wanzek T, Kleber M, Nico P, Fendorf S. Anaerobic microsites have an unaccounted role in soil carbon stabilization. Nature communications. 2017 Nov 24;8(1):1771.

Anonymous Referee 2 Comments:

“Geomorphic regulation of floodplain soil organic carbon concentration in watersheds of the Rocky and Cascade Mountains, USA” by Scott and Wohl uses data from distinct basins to identify key drivers of inter- and intra-basin organic carbon (OC) storage in soils. While we often focus on rivers as exporters and transformers of carbon, we rarely acknowledge the potential for river corridors to store organic matter. This paper does a nice job of highlighting the different controls on this storage function, is presented clearly, and will be of great interest to a diverse group of researchers and managers. Below I offer a few major and minor comments to highlight the novelty and contributions of this work.

*We are grateful for your comments and feel that the resulting revisions have improved the manuscript.*

Major comments

1. Highlight novelty. As written, the authors largely omit much-needed reminders of how and why this work is novel, and which key knowledge gaps this paper addresses. The abstract does a modest job of this, but the introduction and discussion do not sufficiently highlight the “unknowns”. While many of these controls on OC input and storage are intuitive, datasets like the one presented here are relatively rare, as are the studies that are able to tease apart the relative importance of expected controls across multiple sites.

*We have revised the introduction to better highlight the knowledge gaps that this study helps to address, specifically with regard to the spatial distribution of OC in mountain river networks, the source of that OC, and the multi-scale controls on OC concentration. We also note that the first paragraph of section 1.1 further elaborates on the research needs specific to understanding floodplain soil OC dynamics. Our revised introduction now provides an overview, including a review of relevant literature, that leads into the more detailed explanation of current knowledge gaps and how we address them in section 1.1.*

2. Conceptual figure. I was very excited to see this, as I wrote “need for conceptual figure?” a page or two before Figure 3 was introduced in the text. However, the link between the findings in this paper and the take-home messages from the conceptual figure are unclear. If the authors find the Veg/Litter, Valley bottom morph, and Moisture (is “surface water dynamics” = “moisture” in the figure? Clarify) are dominant controls, why aren’t they highlighted in the figure? I realize this study, while very thorough, was only in 2 basins and the authors may not want to exclude the possibility of other primary controls in other places, but, related to #1 above, including this figure at the end of the discussion should highlight how this work has changed or improved our understanding.

*We have edited our conceptual model (now Figure 4) substantially based your comments and those of Reviewer 1. We have attempted to strike a balance between strictly presenting our results and generalizing the conceptual model to include results from previous work. However, we realize that it would be helpful to highlight how our results add to this conceptual model. As such, we have edited the text in each part of the figure to better correspond to the factors we actually modeled (soil texture, moisture, etc.). We also added language to the last paragraph in*

*section 4.3 to better summarize how our results advance our understanding, specifically connecting geomorphic and hydrologic processes to OC storage in floodplain soils.*

3. Floodplains and the aquatic/terrestrial limbo. In 1.1, the authors acknowledge the uncertainty of “whether OC concentration follows a trend similar to uplands. . .” but do not revisit this. As someone who feels that river corridors/floodplains get left out of these discussions too often by surface water or upland studies, I urge the authors to come back to this point in the discussion. Is this assumption of a similar trend a reasonable one?

*We have revised the discussion to revisit this assumption more explicitly. In section 4.2, paragraph 5, we cite multiple previous studies to show that our finding of decreased OC concentration with depth is similar to other soil profiles. To address your comment, we have added more explicit language to this paragraph making it more clear that floodplains to exhibit trends in OC concentration with depth that are similar to uplands. Also, In addressing comments by reviewer 1, we have also added a figure (now Figure 3) showing OC concentration trends with depth. These revisions hopefully make it clearer to readers that mountain river floodplains do follow vertical soil OC concentration trends that are similar to uplands.*

Minor comments as page,line

1,8 – Consider making this opening statement more active: “mountain rivers have the potential for high organic carbon (OC) storage by retaining. . .”

*We have revised this sentence somewhat differently than this suggestion, but in the spirit of making it more impactful and active.*

1,10 – Here and elsewhere (e.g. 7,35 and other sections). Why present tense? The authors often switch back and forth in a single paragraph. Keep consistent. Past sense seems more appropriate for work already done.

*Our general framework with respect to verb tense is to use present tense in the abstract and introduction, past tense in the methods, and present tense in the results and discussion. We feel that present tense is appropriate in many places to discuss either things that we found that are assumedly still true in the present as well as things we actively do in the manuscript. We appreciate that you caught these inadvertent mistakes in verb tense consistency. We have revised each section to be of uniform verb tense, according to the framework outlined above.*

2,35 – I enjoyed thinking about allochthonous/autochthonous from the floodplain perspective. Thanks for coming back to this in the discussion (14,5) as well!

*Thank you, we are glad to hear that this choice of terminology and framing worked well for this manuscript.*

4,1 – Access roads and trails here as well, no? I know the winds can be pretty remote, but it’s nice to get a feeling for direct human impacts as mentioned for logging in the MF Snoqualmie basin (even if they are minimal).

*Thanks for catching this omission. The Big Sandy has been grazed in the lower reaches (although we didn’t notice any particularly incised streams or rapidly eroding banks that might indicate intensive over-grazing) and has an access road crossing the basin. We have noted this in the field site description.*

9,3 – I really appreciated these summaries at the end of each paragraph. Great way to stay in results mode but not lose sight of overall trends.

*This is great to hear. We are glad these summary paragraphs were effective.*

10,6 – Respiration is a mechanism. Consider restating. Perhaps “stabilization and loss mechanisms”?

*Good point. We have revised according to your suggestion. This also fits better with our revisions to the conceptual model (Figure 3).*

10,9 – Missing a space: “2018),which”

*We have added a space.*

13,10 – As written, could be read as inputs are regulated by storage. Could restate as “the fate of OC inputs are regulated. . .”

*Reviewer 1 also commented on this sentence. We have revised based on both your comments to clarify that we mean that OC inputs are regulated by storage and OC processing in soil to determine OC concentrations in floodplain soil.*

19, Figure 1 – coordinates?

*We have added coordinates for the approximate centers of each basin to the figure caption.*

21, Figure 3 – see major comment #2 above.

*We have revised Figure 3 according to your and Reviewer 1’s suggestions. Please see our response to major comment #2 above.*

### Associate Editor Comments

Associate Editor comments following peer review of “Geomorphic regulation of floodplain soil organic carbon concentration in watersheds of the Rocky and Cascade Mountains, USA”, by Scott & Wohl

I have now had the opportunity to read your manuscript in detail, before examining the comments made by the two referees. I concur with their reports, there are novel and interesting elements to this research and the paper is clearly suitable for ESurf.

I agree with all of the reviewers' recommendations. The replies you have posted suggest a revised version can address these comments. Please take this opportunity again to reflect on revisions (the conceptual diagram is still somewhat hard to link to the study).

*We feel that the conceptual diagram, as it has been revised, strikes a balance between sticking to the results of our study and attempting to generalize those results. While we could make it more strictly related to this study, we feel that its current design is appropriate for our objective of trying to provide a conceptualization of floodplain soil OC dynamics. However, we have added a clause to the caption of this figure noting more explicitly that it is based on both this study and other literature.*

My own reading of the manuscript has raised an important additional point. Organic carbon (%OC) concentration was quantified using measurements of loss on ignition (LOI). While this is still relatively common in some fields, it does have known (and potentially large, up to several 10s of %) biases for measurement of %OC. If the study had quantified organic carbon stocks (e.g. gC m<sup>-2</sup>) and/or fluxes (gC / yr) this would have been an issue: the results would not be comparable to methods which analyse %OC using combustion and elemental analyser methods. Here, the study focuses on a comparison of %OC between two study sites. Therefore, broadly speaking the %LOI approach should allow patterns and differences to be delineated. However, I would encourage future work that employs a more direct quantification of %OC in sediments and soils.

*We appreciate your suggestion, but respectfully disagree with your comment that LOI has known biases for %OC measurement, based on our review of the literature comparing LOI to elemental analysis methods. While LOI does estimate OM, and hence requires a correction factor to estimate OC, we are unaware of any evidence that corrected LOI estimates (to obtain OC) are biased when compared to elemental analysis. Tests comparing LOI and elemental analysis all point to potentially lower precision of LOI estimates (e.g., Abella and Zimmer, 2007), but none point to any systematic biases due to LOI when an OM to OC correction factor is applied (Abella and Zimmer, 2007; Sleutel et al., 2007), especially when structural water content is appropriately corrected for (Hoogsteen et al., 2015; Wang et al., 2011) and carbonate concentrations are low, as they were in our study sites (Wright et al., 2008). All of these studies conclude that LOI-based estimations of OC content are indeed comparable to those obtained by a CHN analyzer, albeit with some sacrifice in variability. We welcome suggestions of literature that show a bias (as opposed to simply higher variability) in LOI, but in lieu of that, we stand by our methodological decision. We chose LOI to balance cost (we had to analyze 293 soil samples*

*for this study) and estimation accuracy. Our choice is further justified by the fact that we were able to robustly determine the controls on OC content in floodplain soils with statistical analyses despite the potentially higher variability in our OC estimates introduced by LOI.*

With this in mind, the manuscript needs more details on the resultant uncertainties that derive from using the %LOI method to get %OC. These are:

1) Structural clay water content is accounted for using a published approach. Can you add a sentence or two to explain the size of this correction (i.e. was the average proportion of the LOI weight loss attributed to this factor)?

*We have added a sentence to the end of paragraph 2 in section 2.4 that details this information. We decided to calculate the clay water correction magnitude as a proportion of the sample OC estimate (with the correction). While this is comparable to the proportion of the LOI weight loss, this perhaps more explicitly shows the magnitude of the correction factor with regard to the final OC estimate. We have reported this value as a range and a 95% confidence interval on the median for each basin studied.*

2) Because this study focuses on site comparison, can you please specify how much this clay water correction factor varied between samples, and between locations. It is important to establish whether the LOI method introduces biases into the %OC estimates and subsequent analysis.

*Please see our response to the previous comment. We have provided values for each basin separately, allowing for comparison. The 95% confidence intervals on the median estimates for the magnitude of the clay water content correction as a proportion of total OC content for each basin overlap substantially, indicating that this correction was similar between basins. Please also see our response to your comment above regarding LOI biases regarding that issue.*

3) There are 10 measurements of %OC from CHN analysis (following carbonate removal). It would be useful to explain how these measurements differed from the %LOI approach on the same samples, and feed this into the analysis of uncertainty derived from the LOI method.

*The CHN measurements were not conducted to represent a robust test of LOI as a method of estimating OC content, as we explicitly analyzed only samples that could potentially be calcium-carbonate-rich. However, we agree that it would be useful to compare these CHN measurements to our LOI estimates of OC. As such, we have added a sentence detailing the 95% confidence interval on the median difference between the LOI and CHN estimate for these 10 samples. This 95% confidence interval includes 0, which suggests a lack of bias in our LOI estimates. We did not conduct repeated analyses with any single method of any samples, and hence are unable to evaluate the variance in our LOI estimates. We have also added the CHN %OC measurements to our supplementary data table.*

Other comments:

Pg1, L8 – I think you need to add “in floodplain soils” or similar to the end of the first sentence.



*Good point, we have made the suggested change.*

Pg1, L15 – ‘differences’ instead of ‘trends’

*We have made the suggested change.*

Pg2, L31 – “: : concentration of soil”

*We have made the suggested addition here and elsewhere in the manuscript to improve clarity.*

Pg3, L3 – its coming later, but it would be useful to briefly explain how these two locations differ. Indeed, a summary table would be a useful way to contrast the main sites shown in Figure 2.

*We have added to this sentence to explain that the basins differ primarily in terms of hydroclimatic regime and vegetation characteristics. Instead of a summary table, we now show key basin characteristics in Figure 1 (showing field sites), to make it simpler for readers to quickly compare the two basins.*

Pg3, L18 – For the review article citation, please specify here that all relevant details are provided in this manuscript (and make sure they are). Or if the paper is on a pre-print server those details can be provided.

*This article was published, and the citation has been changed accordingly. We feel that all relevant details are indeed provided in this manuscript. In fact, this citation is more to explain why the methods sections of these two papers are so similar (in case readers happen to read both), instead of trying to save space in this paper by directing readers to the paper cited here.*

Pg6 – I appreciate the careful discussion of the LOI method for calculating %OC. However, there needs to be a little bit more detail on the uncertainties associated with the LOI method. 1) Can you add some more information on the clay content corrections (outline the degree of the correction, and assess whether they are systematic in any way between different locations, or across environmental gradients). 2) Please provide an estimate of uncertainty (precision and accuracy) for the %OC derived from LOI. 3) use the CHN %OC analyses to assess the accuracy of the LOI proxy for the small sample set where you have both measurements (n = 10).

*Please see our responses to your major comment above. We have added information regarding clay held water content corrections (their magnitude and whether they vary between basins). We cannot estimate the precision of our LOI-derived %OC measurements, as we did not perform replicate analyses. We can assess the accuracy, comparing LOI %OC estimates to CHN %OC estimates, as you suggest in point 3. We have done this, and added language explaining it to the end of section 2.4.*

Pg7, L2 – ‘likely still be accurate’ – this phrase can be qualified using the measurements of %OC from CHN versus %OC from LOI. Please do so (see comment above).

*Please see our responses to your above comments. We have done so, and we detail our changes above.*

Pg12, L21 – it would be useful somewhere here to summarise some of the available geochemical approaches which may be used to examine in more detail the provenance and processing of organic matter (e.g. stable isotopes, radiocarbon activity, biomarkers, isotope composition of plant wax biomarkers) in the floodplain sediments.

*We feel that such a summary would be out of the scope of this paper. In addition, we are not experts in using geochemical approaches to accomplish such a goal, so we feel that we likely would not do such a summary justice in suggesting valid methods. As such, we have chosen to make no changes with regard to this comment.*

Figure 1 – shows hillshade not topography, please edit the caption

*We have edited the caption accordingly.*

#### References Cited

- Abella, S.R., Zimmer, B.W., 2007. Estimating Organic Carbon from Loss-On-Ignition in Northern Arizona Forest Soils. *Soil Sci. Soc. Am. J.* 71, 545.  
<https://doi.org/10.2136/sssaj2006.0136>
- Hoogsteen, M.J.J., Lantinga, E.A., Bakker, E.J., Groot, J.C.J., Tittonell, P.A., 2015. Estimating soil organic carbon through loss on ignition: Effects of ignition conditions and structural water loss. *Eur. J. Soil Sci.* 66, 320–328. <https://doi.org/10.1111/ejss.12224>
- Sleutel, S., De Neve, S., Singier, B., Hofman, G., 2007. Quantification of organic carbon in soils: A comparison of methodologies and assessment of the carbon content of organic matter. *Commun. Soil Sci. Plant Anal.* 38, 2647–2657.  
<https://doi.org/10.1080/00103620701662877>
- Wang, Q., Li, Y., Wang, Y., 2011. Optimizing the weight loss-on-ignition methodology to quantify organic and carbonate carbon of sediments from diverse sources. *Environ. Monit. Assess.* 174, 241–257. <https://doi.org/10.1007/s10661-010-1454-z>
- Wright, A.L., Wang, Y., Reddy, K.R., 2008. Loss-on-Ignition Method to Assess Soil Organic Carbon in Calcareous Everglades Wetlands. *Commun. Soil Sci. Plant Anal.*  
<https://doi.org/10.1080/00103620802432931>

# Geomorphic regulation of floodplain soil organic carbon concentration in watersheds of the Rocky and Cascade Mountains, USA

5 Daniel N. Scott<sup>1</sup>, Ellen E. Wohl<sup>1</sup>

<sup>1</sup>Department of Geosciences, Colorado State University, Fort Collins, CO, 80521, United States

*Correspondence to:* Daniel N. Scott (dan.scott@colostate.edu)

**Abstract.** Mountain rivers have ~~shown~~ the potential ~~for to retain OC-rich soil and store large quantities of organic carbon (OC) in floodplain soils.~~ high organic carbon (OC) storage in terms of retaining OC rich soil. We characterize valley bottom morphology, floodplain soil, and vegetation in two disparate mountain river basins: the Middle Fork Snoqualmie, in the Cascade Mountains, and the Big Sandy, in the Wind River Range of the Rocky Mountains. We use this dataset to examine variability in OC concentration between these basins as well as within them, at multiple spatial scales. We find that although there are some differences between basins, much of the variability in OC concentration is due to local factors, such as soil moisture and valley bottom geometry. From this, we conclude that local factors likely play a dominant role in regulating OC concentration in valley bottoms, and that inter-basin ~~trends~~ differences in climate or vegetation characteristics may not translate directly to ~~trends-differences~~ in OC storage. We also use analysis of OC concentration and soil texture by depth to infer that OC is input to floodplain soils mainly by decaying vegetation, not overbank deposition of fine, OC-bearing sediment. Geomorphology and hydrology play strong roles in determining the spatial distribution of soil OC in mountain river corridors.

## 20 1. Introduction

Terrestrial carbon storage plays an important role in regulating the global carbon cycle and the distribution of carbon between oceans, the atmosphere, long-term ( $10^5 - 10^9$  years) storage in rock, and short- to moderate-term storage in the biosphere ( $10^1 - 10^4$  years, including vegetation and soil) (Aufdenkampe et al., 2011; Battin et al., 2009). Soils, in particular, are a large organic carbon (OC) reservoir with significant spatial variability (Jobbágy and Jackson, 2000; Schmidt et al., 2011), making them difficult to characterize in the context of global carbon cycling. It is essential to quantify the spatial variability of OC stored in the biosphere to constrain the effects of climate change on feedbacks between biospheric and atmospheric carbon storage (Ballantyne et al., 2012). To provide a more complete understanding of how the biospheric carbon pool may change in the future and guide management of soil OC, we seek to provide a better constraint on where carbon is stored in the biosphere and the processes that regulate that storage.

We focus here on river corridors, defined as channels, fluvial deposits, riparian zones, and floodplains (Harvey and Gooseff, 2015), which process, concentrate, transport, and store carbon (Wohl et al., 2017b). In the context of the carbon cycle, floodplains can act as a major component of the biospheric carbon pool (Aufdenkampe et al., 2011; Battin et al., 2009). Floodplain soil can act as a substantial pool of OC despite their relatively small aerial extent, indicating that floodplains may be disproportionately important compared to uplands in terms of

carbon storage (D'Elia et al., 2017; Hanberry et al., 2015; Sutfin et al., 2016; Sutfin and Wohl, 2017; Wohl et al., 2012, 2017a). Mountainous regions, due to their high primary productivity (Schimel and Braswell, 2005; Sun et al., 2004), may play a substantial role in the freshwater processing and storage of OC where they retain sediment and water along the river network (Wohl et al., 2017b). Even laterally constrained floodplains in mountainous drainages can store significant quantities of OC that can be mobilized during floods (Rathburn et al., 2017). However, we lack a comprehensive characterization of how floodplain soil OC varies throughout watersheds. It is important to understand the spatial distribution of OC to predict its fate during floods and inform management to increase floodplain OC storage (Bullinger-Weber et al., 2014).

Floodplain OC enters river corridor soils via litterfall from vegetation and erosion of OC-bearing bedrock (Hilton et al., 2011; Leithold et al., 2016; Sutfin et al., 2016). OC inputs are either allochthonous, from upstream deposition of soil, particulate, and dissolved OC, or autochthonous, from riparian vegetation (Omengo et al., 2016; Ricker et al., 2013; Sutfin et al., 2016). As such, OC input can be regulated by vegetation dynamics and resulting litter input, hydrologic and sediment transport regimes, and water chemistry. However, it is unclear which OC inputs dominate under various conditions, hampering the prediction of changes in OC delivery to soils under a changing climate that may have significant effects on vegetation dynamics and hydrology.

OC concentration in soil is controlled by processes acting at multiple spatial scales. At broad, intra-basin scales, OC concentration in soil is ~~also~~-regulated by the ability of carbon to sorb to soil particles and the ability of microbes and other organisms to ~~oxidize-respire~~ soil OC, which can be controlled by rhizosphere dynamics, moisture, and temperature. Sorption of OC to soil particles reduces OC lability and is controlled by grain size and resulting available surface area as well as the availability of calcium, iron, and aluminum (Kaiser and Guggenberger, 2000; Rasmussen et al., 2018). Microbial ~~processing oxidizes OC and respiration~~ represents the primary pathway by which soil OC returns to the atmosphere. In general, low temperatures and frequent saturation inhibit microbial activity and promote OC storage (Falloon et al., 2011; Jobbágy and Jackson, 2000; Sutfin et al., 2016).

At smaller, inter-basin scales, hydroclimatic regime controls vegetation dynamics, moisture, and temperature, such that soil OC concentration in disparate regions can be approximately characterized by these predictors (Aufdenkampe et al., 2011; Schimel and Braswell, 2005). However, at the scale of a single watershed, hydrology, ecology, and geomorphology play strong roles in determining soil texture, moisture, and microbial dynamics, in turn controlling OC storage in valley bottoms (Scott and Wohl, 2017; Sutfin and Wohl, 2017; Wohl and Pfeiffer, 2018). As such, a multi-scale approach must be taken to understanding spatial variation in OC concentrations in valley bottoms. We currently lack a comprehensive, field-based examination of how processes acting at inter- and intra-basin scales interact to regulate floodplain soil OC concentrations.

Here To address this knowledge gap, we quantify spatial variations in OC concentration of floodplain soil within-across the entirety two disparate mountain river networks. This allows us to examine inter-basin hydroclimatic variation and intra-basin geomorphic and vegetation variation to understand the multi-scale controls on OC concentration. We use this multi-scale approach to draw inferences regarding the spatial distribution of floodplain OC, controls on that spatial distribution, and the dominant source of OC to mountain river floodplains.

## 1.1 Objectives and Hypotheses

Across a basin, it is uncertain whether OC concentration in floodplain soils follows predictable longitudinal ~~variation, or variation or~~ is controlled by local factors. Similarly, in a vertical floodplain soil profile, it is uncertain whether OC concentration follows a trend similar to uplands, with declining OC concentration with depth, or exhibits vertical heterogeneity as a result of OC-rich layers deposited by floods. It is also unclear whether OC in floodplain soils is dominantly autochthonous or allochthonous. Floodplain soil OC source may be evident from the vertical heterogeneity of OC concentration, whereby dominantly autochthonous OC profiles should decline with depth whereas dominantly allochthonous OC profiles should exhibit vertical heterogeneity, reflecting episodic deposition. Our primary objective here is to understand spatial variations in OC concentration both with depth in a soil profile and across a basin. By quantifying these variations, we hope to infer the processes that regulate OC deposition in floodplain soil.

By examining two ~~disparate~~ mountain river basins that differ in terms of hydroclimatic regime and vegetation characteristics, we can quantify both inter-basin variation in OC storage as well as variation within each basin. We hypothesize that at an inter-basin scale, hydroclimatic regime and resulting rate of litterfall inputs in the riparian zone (Benfield, 1997) will dominantly regulate OC concentration (H1). We define hydroclimatic regime as the combination of precipitation and temperature dynamics that result in the vegetation characteristics of a basin. At an intra-basin scale, we expect that valley bottom geometry and river lateral mobility will regulate floodplain sediment characteristics and vegetation dynamics. Thus, we hypothesize that soil OC concentration does not vary along predictable, longitudinal trends within mountain river basins, instead being more dominantly controlled by local fluvial processes and valley bottom form (H2a). We hypothesize that geomorphic process and form determine soil texture and moisture, which in turn set the boundary conditions that regulate the sorption of OC to mineral grains (promoting stabilization) and the potential of OC to be respired by microbes (H2b). In terms of OC inputs to floodplain soils, we hypothesize that the source of OC is dominated by autochthonous vegetation and litter inputs in these basins (H3). As such, we expect OC to dominantly decline with depth, only rarely exhibiting vertical heterogeneity that would represent allochthonous deposition from flooding.

## 2. Methods

This work was done alongside work presented in Scott and Wohl (2018) ~~Scott and Wohl (In Review)~~, and hence shares field sites, study design, GIS, and sampling techniques.

### 2.1 Field Sites

We quantified soil organic carbon concentrations to a depth of approximately one meter in the Big Sandy basin in the Wind River Range of Wyoming and the Middle Fork Snoqualmie basin in the central Cascade Mountains of Washington (Figure 1). These basins represent distinct bioclimatic and geomorphologic regions, ranging from the wet, high relief, glacially-influenced Cascades to the semi-arid, moderate relief Middle Rockies.

The MF Snoqualmie has a mean annual precipitation of 3.04 m (Oregon State University, 2004), 2079 m of total relief over a 407 km<sup>2</sup> drainage area, and a mean basin slope of 60%. Topography in the MF Snoqualmie is largely glaciogenic, with wide, unconfined valleys at both high and low elevations. Streams range from steep, debris flow dominated headwater channels to lower gradient, wide, laterally unconfined channels in its lower reaches. The lower reaches of the MF Snoqualmie have been clearcut extensively in lower reaches since in the early 1900s, although there is little logging activity today. Vegetation follows an elevation gradient. The talus, active glaciers, and alpine tundra at the highest elevations transition to subalpine forests dominated by mountain hemlock (*Tsuga mertensiana*) (above approximately 1500 m), but also including Pacific silver fir (*Abies amabilis*) and noble fir (*Abies procera*) in the lower subalpine and montane zones (above approximately 900 m). Below the montane zone, uplands and terraces are covered by Douglas fir (*Pseudotsuga menziesii*) and western hemlock (*Tsuga heterophylla*), whereas active riparian zones are dominated by red alder (*Alnus rubra*) and bigleaf maple (*Acer macrophyllum*).

The semi-arid Big Sandy is considerably drier than the MF Snoqualmie, but also exhibits broad, glacially carved valleys, especially in headwater reaches. It has a mean annual precipitation of 0.72 m (Oregon State University, 2004), 1630 m of total relief over a 114 km<sup>2</sup> drainage area, and a mean basin slope of 25%. The lower reaches of the Big Sandy are anthropogenically impacted by moderate grazing use and an access road that crosses through part of the basin. Herbaceous alpine tundra dominates higher elevations (above approximately 3100 m), while the subalpine zone (approximately 2900 to 3100 m) is characterized by forests of whitebark pine (*Pinus albicaulis*), Engelmann spruce (*Picea engelmannii*), and subalpine fir (*Abies lasiocarpa*). The montane zone (approximately 2600 m to 2900 m) is comprised dominantly of lodgepole pine (*Pinus contorta*). Only a small portion of this basin (approximately 1%) resides below 2500 m, where shrub steppe begins to dominate (Fall, 1994). Parklands and meadows are abundant in this basin, creating a patchy forest structure. Comparing this basin to the MF Snoqualmie provides bioclimatic contrast that allows us to examine how floodplain soil OC concentrations vary across a range of stream morphologies and floodplain morphologic types in regions with differing precipitation, forest characteristics, and basin morphology.

To simplify comparison of these two basins, we henceforth refer to them by their dominant climate, whereby the Middle Fork Snoqualmie is the wet basin and the Big Sandy is the semi-arid basin (Figure 1).

## 2.2 Study Design and Sampling

We sampled the Big Sandy semi-arid basin in summer 2016 and the MF Snoqualmie in summer 2017. During each sampling campaign, no large floods occurred and we observed no floodplain erosion or deposition. Across both basins, we cored a total of 128 floodplain sites to determine soil OC concentration. Cores were collected as a series of individual soil samples at both regular and irregular depth increments.

### 2.2.1 Big Sandy Semi-arid Basin

The sparse vegetation in the Big Sandy semi-arid basin enabled us to use a combination of a 10 m DEM and satellite imagery to manually map the extent of the valley bottom along the entire stream network and delineate

valley bottoms based on confinement. We defined unconfined valley bottoms as those in which channel width occupied no more than half the valley bottom, and confined valley bottoms as those in which channel width occupied greater than half the valley bottom. Within each confinement stratum, we stratified the stream network by five drainage area classes to produce a total of ten strata, ensuring even sampling across the basin. Within each of the resulting ten strata, we randomly selected 5 reaches, producing a total of 50 sample sites throughout the basin. Due to access issues, we sampled 48 out of the 50 randomly located sites. We supplemented these with 4 subjectively located sites that we felt enhanced our ability to capture variation throughout the drainage based on observations in the field, resulting in a total of 52 sampled sites.

### 10 2.2.2 Middle Fork Snoqualmie Wet basin

The MF Snoqualmie River wet basin is larger than the Big Sandy semi-arid basin and has extensive, low-gradient floodplains in its downstream reaches. These extensive floodplains display high spatial variability in vegetation, surface water, grain size, and estimated surface age, based on aerial imagery and ground reconnaissance. To ensure an unbiased characterization of these heterogeneous floodplains, we used aerial imagery, a 10 m DEM, and pictures from field reconnaissance to delineate the floodplain into patch categories: fill channels (abandoned channels that have had enough sediment deposited to prevent an oxbow lake from forming), point bars (actively accreting surfaces on the inside of bends), wetlands (areas with standing water in imagery that are not obviously oxbows), oxbow lakes (abandoned channels dammed at the upstream and downstream ends to form a lake), and general floodplain surfaces (surfaces that cannot be classified into any of the above categories). Within each of these five categories, we randomly selected six points at which to take soil cores.

We also stratified the entire MF Snoqualmie wet basin stream network by channel slope into four strata. Within each channel slope strata (hereafter referred to as simple-slope strata), we randomly selected ten reaches to collect a single floodplain soil core, resulting in 40 randomly located sample sites.

To supplement randomly sampled sites and accommodate for the infeasibility of accessing two of the randomly sampled sites along the stream network, we also subjectively selected sample sites in places that we felt enhanced the degree to which our sampling captured the variability present among streams in the basin. This resulted in a total of 46 sites stratified by slope, 38 of which were randomly sampled, in addition to 30 sites stratified by floodplain type.

### 30 2.3 Reach-Scale Field Measurements

At each sampled reach (100 m or 10 channel-widths, whichever was shorter), we measured channel geometry and other characteristics, although our measurements were not consistent across all basins because field protocol evolved during the course of the study. In both basins, we measured confinement, valley bottom width, and channel bed slope. We additionally measured bankfull width and depth in the MF Snoqualmie wet basin. We did not measure channel characteristics for sites stratified by floodplain type in the MF Snoqualmie wet basin, since they did not correspond to a single reach of channel, as did sites stratified by slope in much more confined valleys.

In the [MF-Snoqualmiewet basin](#), we also categorized channels by planform and dominant bedform (Montgomery and Buffington, 1997). We defined planforms as either: straight, where the channel was generally confined and significant lateral migration was not evident, meandering, where lateral migration was evident but only a single channel existed, anastomosing, where vegetated islands separated multiple channels, and anabranching, where a single dominant channel existed with relict channels separated by vegetated islands. We further classified channels as being either multithread (anastomosing or anabranching) or single thread (straight or meandering). Because logging records are inconsistent and likely inaccurate in the [MF-Snoqualmiewet basin](#) (based on the frequent observation of past logging activity where none was recorded in Forest Service records), we noted whether signs of logging, such as cut stumps, cable, decommissioned roads or railroads, or other logging-associated tools were found near the reach.

We chose a representative location on the floodplain for each sampled site, based on visual examination of vegetation type, soil surface texture, surface water presence, and elevation relative to the bankfull channel elevation (floodplain sites stratified by type in the [MF-Snoqualmiewet basin](#) were sampled as close to the randomly sampled point as possible). Once a location was chosen, we extracted a 32 mm diameter soil core using an open-sided corer (JMC Large Diameter Sampling Tube). Due to our adaptive methodology, we sampled soil OC slightly differently in the [Big-Sandysemi-arid basin](#) versus the [MF-Snoqualmiewet basin](#). In the [Big-Sandysemi-arid basin](#), we cored in irregular increments, generally 25-30 cm. After analyzing data from the [Big-Sandysemi-arid basin](#), we realized that sampling in regular increments would make analysis more versatile. As a result, we switched to extracting soil samples at regular, 20 cm increments in the [MF-Snoqualmiewet basin](#). Cores were taken to refusal (i.e., coarse gravel or other obstructions preventing further soil collection) or a depth of approximately 1 m. Five cores in the [Big-Sandysemi-arid basin](#), 12 cores in the [MF-Snoqualmiewet basin](#) sites stratified by slope, and 11 cores in the [MF-Snoqualmiewet basin](#) sites stratified by floodplain type did not reach refusal. When no sand or finer sediment was present in the valley bottom (only occurred in headwater channels of the [MF-Snoqualmiewet basin](#)), we recorded negligible OC concentration. Once soil samples were removed from the ground, they were placed in ziplock bags and frozen within 72 hours (most samples were frozen within 8 hours) and kept frozen until analysis.

## 2.4 Measuring Soil OC and Texture

To measure the concentration of organic carbon in soil samples, we used loss-on-ignition (LOI). We first defrosted samples for 24-48 hours at room temperature. Once defrosted, we thoroughly mixed samples to ensure the most homogenous sample possible. We then subsampled 10-85 g of soil from each sample for analysis. Using crucibles in a muffle furnace, we dried samples in batches of 30 for 24 hours at 105°C to determine moisture content and remove all non-structurally held water. Following the guidelines suggested by Hoogsteen et al. (2015), we then burned samples for 3 hours at 550°C to remove organic matter. By comparing the weight of the burned samples with that of the dried samples, we obtained an LOI weight.

After performing LOI, we used burned samples to perform texture-by-feel to determine the USDA soil texture class and estimated clay content (Thien, 1979). To convert LOI weight to OC concentration, we used the



structural water loss correction of Hoogsteen et al. (2015) using clay content estimated from soil texture. This correction considers water held by clay that may not evaporate during ~~drying, but~~drying but will evaporate during burning. It also estimates the proportion of the LOI weight that is OC. This correction, represented as a percent of the estimated sample OC content after the correction, ranged from 0.90% to 495.76% (95% confidence interval on median between 16.17% and 24.25%) for the wet basin, and ranged from 5.54% to 570.53% (95% confidence interval on median between 19.76% and 32.11%) for the semi-arid basin.

One potential confounding factor in LOI is carbonates that may burn off during ignition, adding to the LOI weight while not being organic matter. In lithologies where carbonates are rare (e.g., granitoid rocks like those found in the upper ~~part of the MF Snoqualmie wet basin~~ and entire ~~Big Sandy basin~~semi-arid basins), this is a relatively negligible issue. However, some of our soil samples came from parts of the ~~MF Snoqualmie basin~~wet basin draining rocks of the western mélangé belt, including argillite, graywacke, and marble. We tested samples for the presence of carbonates to determine whether our LOI methods would be sufficient to accurately determine OC concentration. We randomly chose 10 soil samples of a total of 110 that drained rocks that could include carbonates and submitted them to the Colorado State University soil testing laboratory for CHN furnace analysis (Sparks, 1996), which yielded data on the proportion of carbonates by mass in those samples. ~~On average, those samples contained~~The median calcium carbonate concentrations of those 10 samples was 0.987% (95% confidence interval between 0.7096% and 1.030.97%), and the median percentage of the total carbon in those samples comprised of inorganic carbon was ~~on average, 8.65.05%~~ (95% confidence interval between 1.978.54% and 8.7818.9%). From this, we concluded that the amount of carbonate in the samples draining potentially carbonate-bearing rocks was low enough that LOI was likely to still be accurate. ~~Consequently, we analyzed all soil samples using LOI to obtain OC concentration.~~ The median difference between the LOI and CHN OC estimates for these 10 samples was 0.45% (95% confidence interval between -0.83% and 1.47%), indicating no systematic bias in LOI estimates of OC concentration.

## 2.5 GIS and Derivative Measurements

After fieldwork in each basin, we collected the following data for each reach using a GIS platform: elevation, drainage area, land cover classification and canopy cover from the National Land Cover Database (Homer et al., 2015), and the mean slope of the basin draining to each reach (including hillslopes and channels). Utilizing drainage area at each reach and field-measured channel gradient, we calculated an estimated stream power as the product of drainage area, channel gradient, and basin-averaged precipitation. We utilized a 10 m DEM for all GIS topographic measurements. To estimate clay content for each sample, we used median values for assigned USDA texture classes. To obtain estimated clay content, moisture, and OC for each core, we calculated an average weighted by the percentage of core taken up by each soil sample. ~~For samples stratified by floodplain in the MF Snoqualmie, we categorized wet basin samples stratified by categorized~~ floodplain types into those with standing water (wetlands and oxbow lakes) and those with no standing water (all other types).

## 2.6 Statistical Analyses

All statistical analyses were performed using the R statistical computing software (R Core Team, 2017).

We conducted all analyses on three modeling groups, based on the variables measured in each group. In the **MF Snoqualmiewet basin**, we grouped observations by stratification type, separating observations stratified by channel slope from observations stratified by floodplain type. We separated these two groups from all observations in the **Big-Sandysemi-arid basin**, which were measured consistently. We modeled OC concentration and soil texture with a mixed-effects linear regression using individual soil samples (i.e., the individual samples that make up a core) as sample units (n = 103 for **MF Snoqualmiewet basin** stratified by slope, 89 for **MF Snoqualmiewet basin** stratified by floodplain type, and 101 for **Big-Sandysemi-arid basin**). We modeled the sampled site as a random effect, acknowledging that individual soil samples within a single core are likely non-independent. We used profiled 95% confidence intervals on effect estimates ( $\beta$ ) for fixed effects to evaluate variable importance in mixed-effects models.

To gain further insight at the reach-scale, we also modeled average OC concentration and soil moisture at each measured site using multiple linear regression. We modeled soil moisture at the reach scale because we felt that our single snapshot of moisture conditions was better represented as a site-level average. We first performed univariate analysis between each hypothesized predictor and the response, utilizing mainly comparative Wilcoxon rank-sum tests (Wilcoxon, 1945) or correlational Spearman correlation coefficient statistics. We utilized a Holm multiple-comparison correction (Holm, 1979) for pairwise comparisons. During this filtering, we also viewed boxplots or scatterplots as appropriate to discern which variables appear to have anything other than a completely random relationship with the response. We then utilized all subsets multiple linear regression using the corrected Akaike Information Criterion as a model selection criteria (Wagenmakers and Farrell, 2004). We iteratively transformed response variables to ensure homoscedasticity of error terms. To select a single best model, we utilized both Akaike weight based importance as well as parsimony to select a final, reduced model. We considered sample sizes, p values, and effect magnitudes in determining variable importance.

We also analyzed each core to determine whether there were buried, high OC concentration layers at depth. We compared each buried soil sample to the sample above it using the criterion that a peak in OC at depth should have an OC concentration 1.5 times that of the overlying sample and be above 0.5% (Appling et al., 2014).

## 3. Results

Model results are presented in Table 1. Comparisons between basins and summaries of OC concentration, moisture, and estimated clay content are shown in Figure 2.

### 3.1 OC Concentration

Most cores display a decrease in OC concentration with depth (Figure 3). Of cores with more than a single sample, ~~we found that~~ 32% (7/22) of cores stratified by slope in the **MF Snoqualmiewet basin**, 32% (8/25) of cores stratified by floodplain type in the **MF Snoqualmiewet basin**, and 6% (2/31) of cores in the **Big-Sandysemi-arid**

basin exhibited OC concentration peaks at depth. Whether a soil sample was classified as an OC peak has no relation to estimated clay content in sites stratified by floodplain type ( $p = 0.28$ ) or those stratified by slope ( $p = 0.89$ ) in the MF-Snoqualmiewet basin. In the Big-Sandysemi-arid basin, soil samples classified as buried OC peaks have significantly higher estimated clay contents ( $p = 0.05$ ) than those that were not classified as peaks.

5 In general, the floodplain-stratified sites in the MF-Snoqualmiewet basin stored higher densities of OC than the Big-Sandysemi-arid basin (Figure 2a, b). Figure 2a includes zero values (i.e., sites with no OC-bearing sediment, only present in the MF-Snoqualmiewet basin slope-stratified group), whereas Figure 2b does not, because sample units in Figure 2b are individual soil samples. Comparing these two groups, it appears that soils in the MF-Snoqualmiewet basin can exhibit exhibit much higher OC concentrations than those in the Big-Sandysemi-arid basin, but in general, there are many more reaches with no fine sediment available to store OC in the MF-Snoqualmiewet basin.

10 At the scale of individual soil samples, we found that the depth below ground surface was is by far the dominant control on OC concentration across all modeling groups. We used a cube root transform for all three mixed-effects models of OC concentration. For MF-Snoqualmiewet basin sites stratified by slope, deeper soil samples contained less OC ( $\beta = -0.0084 \pm 0.0042$ ), whereas soil samples at higher elevations tended to contain more OC ( $\beta = 0.0010 \pm 0.00099$ ). Depth was is the only significant predictor of OC content for both MF-Snoqualmiewet basin soil samples stratified by floodplain type ( $\beta = -0.0084 \pm 0.0042$ ) and soil samples in the Big-Sandysemi-arid basin ( $\beta = -0.0037 \pm 0.0019$ ).

15 Modeling MF-Snoqualmiewet basin slope-stratified sites at the reach-scale, we found that moisture ( $\beta = 0.0078 \pm 0.0031$ ), and whether the reach was unconfined ( $\beta = 0.77 \pm 0.49$ ) control soil OC (cube root transformation, model adjusted  $R^2 = 0.54$ ,  $p < 0.0001$ ). Modeling MF-Snoqualmiewet basin floodplain-stratified sites at the site scale, we found that canopy cover ( $\beta = 0.012 \pm 0.011$ ) and moisture ( $\beta = 0.0040 \pm 0.0011$ ) are controls on soil OC (cube root transformation, model adjusted  $R^2 = 0.67$ ,  $p < 0.0001$ ). Modeling Big sandy sites at the reach scale, we found that soil depth ( $\beta = -0.012 \pm 0.0071$ ) and moisture ( $\beta = 0.014 \pm 0.0026$ ) are dominant controls on soil OC concentration (no transformation, model adjusted  $R^2 = 0.69$ ,  $p < 0.0001$ ).

20 Modeling MF-Snoqualmiewet basin slope-stratified sites at the reach-scale, we found that moisture ( $\beta = 0.0078 \pm 0.0031$ ), and whether the reach was unconfined ( $\beta = 0.77 \pm 0.49$ ) control soil OC (cube root transformation, model adjusted  $R^2 = 0.54$ ,  $p < 0.0001$ ). Modeling MF-Snoqualmiewet basin floodplain-stratified sites at the site scale, we found that canopy cover ( $\beta = 0.012 \pm 0.011$ ) and moisture ( $\beta = 0.0040 \pm 0.0011$ ) are controls on soil OC (cube root transformation, model adjusted  $R^2 = 0.67$ ,  $p < 0.0001$ ). Modeling Big sandy sites at the reach scale, we found that soil depth ( $\beta = -0.012 \pm 0.0071$ ) and moisture ( $\beta = 0.014 \pm 0.0026$ ) are dominant controls on soil OC concentration (no transformation, model adjusted  $R^2 = 0.69$ ,  $p < 0.0001$ ).

25 In general, moister, deeper soils store more OC at the reach scale, whereas OC tends to vary dominantly with depth at the scale of individual soil samples. Although estimated clay content did not emerge as a significant predictor of OC concentration, it is used to calculate clay-held water to correct our LOI-based OC concentration measurements, making it important in determining OC for each sample.

30

### 3.2 Soil Texture

In general, soil texture followed a predictable trend with river size between model groups (Figure 2d). Floodplain type-stratified sites in the MF-Snoqualmiewet basin stored the most clay, followed by slope-stratified sites and then sites in the Big-Sandysemi-arid basin.

35

Modeling soil texture at the individual soil sample scale across slope-stratified sites in the MF-Snoqualmiewet basin, we found whether the reach was confined ( $\beta = 5.42 \pm 5.32$ ), and whether the bed material was

dominantly sand ( $\beta = 10.47 \pm 6.13$ ) to be dominant controls on estimated clay content. Modeling soil texture for sites stratified by floodplain type in the [MF-Snoqualmiewet basin](#) yielded no significant trends. In the [Big-Sandysemi-arid basin](#), we found that either valley width ( $\beta = 0.0050 \pm 0.0032$ ) or whether the stream was unconfined ( $\beta = 0.41 \pm 0.33$ ) as well as depth below ground surface ( $\beta = -0.0069 \pm 0.0033$  for model with valley width but not confinement) significantly control soil texture.

To summarize, sites from unconfined, lower energy reaches in the [MF-Snoqualmiewet basin](#) and sites from reaches with wider valley bottoms and at lower depths in the [Big-Sandysemi-arid basin](#) exhibited [more finely textured](#) soils.

### 10 3.3 Soil Moisture

Soil moisture ~~was-is~~ less variable between basins than either texture or OC concentration (Figure 2c). All model groups exhibited similar soil moisture conditions, although there was significant variability within each model group.

15 Soil moisture at [MF-Snoqualmiewet basin](#) sites stratified by slope is dominantly controlled by channel slope ( $\beta = -13.15 \pm 9.11$ ), elevation ( $\beta = 0.0046 \pm 0.0038$ ), and whether the stream is unconfined ( $\beta = 3.89 \pm 2.67$ ; model adjusted  $R^2 = 0.38$ ,  $p < 0.0001$ ). At [MF-Snoqualmiewet basin](#) sites stratified by floodplain type, estimated clay content ( $\beta = 0.060 \pm 0.042$ ) and whether the floodplain unit had standing water ( $\beta = 1.15 \pm 0.71$ ) significantly control soil moisture (model adjusted  $R^2 = 0.46$ ,  $p < 0.0001$ ). In the [Big-Sandysemi-arid basin](#), soil depth ( $\beta = 20 0.012 \pm 0.012$ ), elevation ( $\beta = 0.0023 \pm 0.0014$ ), and whether the reach was unconfined ( $\beta = 0.91 \pm 0.75$ ) significantly control soil moisture (model adjusted  $R^2 = 0.35$ ,  $p < 0.0001$ ).

## 4. Discussion

### 4.1 Understanding Spatial Variability in OC Concentration in Floodplain Soils (H1 and H2)

25 Comparing the [MF-Snoqualmiewet basin](#) to the [Big-Sandysemi-arid basin](#) shows that the wetter, higher primary productivity basin is capable of storing greater concentrations of OC in floodplain soils, but that both regions generally store similar OC concentrations in floodplain soils. This result partially agrees with the examination of subalpine lake deltas by Scott and Wohl (2017). In that study, subalpine lake deltas in the [MF](#)  
30 [Snoqualmiewet basin](#) were compared to deltas in the drier Colorado Front Range. Subalpine lake deltas displayed similar OC concentrations, likely due to competing but complementary OC stabilization and ~~respiration-loss~~ mechanisms in each region. Those deltas represent a subset of the broader valley bottom soils studied here. This more expansive study points to both geomorphic controls, such as valley bottom geometry, and factors influenced by climate, such as canopy cover, as controls on OC storage in valley bottoms. These results [also](#) agree with the  
35 results of Lininger et al. (2018), which indicate that geomorphic context and vegetation dynamics control OC concentration on floodplain soils along large, lowland rivers in Alaska, USA.

At the reach or site scale, wetter soil profiles consistently yielded higher OC concentrations in all model groups. However, moisture ~~doesid~~ not differ significantly between model groups (Figure 2c), indicating that this alone cannot explain differences between basins. Soils tend to be finer in the MF-Snoqualmiewet basin, but clay content ~~is-was~~ not an important predictor of OC concentration in studied soils. ~~Although-clay~~ Clay content likely influences OC concentration based on previous research (Hoffmann et al., 2009), although the inclusion of coarse soil material (including particulate organic matter) in our samples may explain the lack of an observed correlation here. Variability in soil redox conditions (i.e., the presence of anaerobic microsites) may also introduce variability in respiration rate between basins and among individual soil samples (Keiluweit et al., 2017). That is, variability in groundwater hydrology may result in a heterogeneous mix of aerobic (favoring microbial activity) and anaerobic (suppressing microbial activity) conditions within floodplain soils. Unfortunately, we ~~We did not record redoximorphic features of our soil samples, so we are unable to determine whether this influence contributes to the error in our models.~~ Although confinement plays a strong role in determining OC concentration in MF-Snoqualmiewet basin sites stratified by slope, it ~~doesn't~~ does not differ significantly between basins (52% of Big Sandysemi-arid basin reaches are unconfined compared to 63% of MF-Snoqualmiewet basin reaches). The major differences between these basins are their hydroclimatic and disturbance regimes. The MF-Snoqualmiewet basin is at a lower elevation, ~~is wetter~~, and has denser and higher biomass forests (Smithwick et al., 2002), compared to the ~~drier~~, sparser parkland forests of the Big Sandysemi-arid basin, which likely also experiences more frequent fires based on fire histories of nearby regions (recurrence interval on the order of 10<sup>1</sup> - 10<sup>2</sup> yrs; Houston, 1973; Loope and Gruell, 1973). In addition, the volcanic soils present in the wet basin may suppress soil OC respiration (Matus et al., 2014), leading to a higher soil OC storage capacity there.

Between basins, it is likely that hydroclimatic regime, influencing primary production, plays some role in the MF-Snoqualmiewet basin's higher maximum OC concentrations in floodplain soils compared to those of the Big Sandysemi-arid basin. However, smaller-scale factors such as soil texture and moisture also likely play a role and are not related to drainage area (Table 1), indicating that neither OC concentration nor its controlling factors vary continuously along a river network, and thus supporting H2a and H2b. This also indicates that local factors, set largely by geomorphic and groundwater-hydrologic dynamics, play a significant role in modulating the effect of climate on OC concentrations. If the MF-Snoqualmiewet and Big Sandysemi-arid basins displayed significantly different OC concentrations, our first hypothesis regarding the inter-basin controls on OC concentration would be supported. However, we instead ~~find~~ found that climate and primary productivity only partially determine OC concentrations, especially when viewed in the context of geomorphic and hydrologic variability. Thus, the results do not support H1.

Each basin (or model group) ~~is-is~~ slightly different in terms of the controls on soil OC concentration, moisture, and texture. In the MF-Snoqualmiewet basin sites stratified by slope, higher elevation sites displayed higher OC concentrations. This is contrary to the general trend in primary productivity, which decreases with increasing elevation. However, it is important to note that the headwaters of the MF-Snoqualmiewet basin are dominated by lakes, deltas, and other depositional features in relatively broad, glacially carved valleys. Subalpine lake deltas have been shown to store high OC concentrations in this basin (Scott and Wohl, 2017), and many of the

highest OC concentrations we measured were located in broad, wet meadows, subalpine lake deltas, or other unconfined, high elevation reaches. Such unconfined sites also likely have significantly cooler temperatures and tend to have higher soil moisture contents, as shown by our modeling (Table 1). As such, although high elevation ~~MF-Snoqualmie wet basin~~ sites may receive less OC input, they likely have a low rate of OC respiration, resulting in higher OC concentrations on the whole, which agrees with the result of Bao et al. (2017). In the ~~Big-Sandy semi-arid basin~~, our modeling suggests that the lower temperatures and higher moisture (Table 1) at higher elevations do not compensate for the lower primary productivity, as elevation does not correlate to OC concentration.

In both basins, unconfined reaches contained wetter and finer textured soils, which may result in a higher soil OC capacity. Although confinement only ~~related-relates~~ directly to OC content in ~~MF-Snoqualmie wet basin~~ sites, it does play a strong role in determining moisture, which in turn plays a role in regulating OC concentration in both basins, likely via inhibiting microbial activity (Howard and Howard, 1993). The relevance of channel slope in determining soil moisture in the ~~MF-Snoqualmie wet basin~~ but not ~~Big-Sandy semi-arid basin~~ may reflect the prevalence of high-gradient, debris-flow dominated channels in the ~~MF-Snoqualmie wet basin~~ that largely exhibited only gravel to boulder substrate, which we assume stores minimal fine sediment, moisture, or OC.

In the ~~Big-Sandy semi-arid basin~~, higher soil depths ~~were correlate with moister and finer textured soils related to more moisture and finer texture~~, but less OC concentration. This indicates the trend in OC with depth likely dominates the signal of OC concentration, with deeper sites containing a higher proportion of OC-depleted, deep samples.

## 20 4.2 Inferring Sources of OC to Floodplain Soils (H3)

OC can be input to floodplain soils by two primary mechanisms. First, dissolved and particulate OC (including large wood) can be deposited on floodplain surfaces by overbank ~~sediment~~ deposition, thus integrating fluvial sedimentary OC into the floodplain soil profile or, in the case of large wood, depositing discrete but potentially large concentrations of OC that can later be integrated into the soil profile. Second, litter and decomposing vegetation on the floodplain surface, ~~in addition to decomposing wood that may have been deposited by overbank flows,~~ can act as autochthonous inputs of OC to floodplain soil.

Our modeling of OC concentration yielded results consistent with previous investigations of controls on soil OC storage capacity (Jobbágy and Jackson, 2000; Sutfin and Wohl, 2017). Sites in the heterogeneous floodplain of the ~~MF-Snoqualmie wet basin~~ displayed a direct correlation between canopy cover and OC concentration, indicating that increased litter inputs lead to increased floodplain soil OC concentration. Sediment inputs likely differ between floodplain depositional unit types (e.g., coarser sediment may deposit on point bars compared to filled secondary channels), although floodplain type does not predict OC concentration which were not found to be an important predictor of OC concentration. This indicates that vegetation inputs may be more dominant than fluvial sediment inputs at these sites.

The finding that buried OC peaks in the ~~MF-Snoqualmie wet basin~~ do not have abnormally high clay contents supports the interpretation that wood and litter inputs to soil are the dominant source of OC in the

floodplain soils we examined. Buried peaks can be either layers created by overbank deposition and subsequent burial of fine, OC-bearing sediments (Blazejewski et al., 2009; Ricker et al., 2013), buried pieces of wood (Wohl, 2013), or buried organic horizons that are now capped by sediments that prevent OC respiration. If overbank deposition of fine sediment caused OC peaks, we would expect to see the soil samples classified as peaks exhibiting high clay contents, indicating finer sediment. Instead, our results suggest that in the MF-Snoqualmie wet basin, buried peaks are likely the result of either buried organic horizons or buried wood. We observed large pieces of decaying, buried wood in floodplain cut banks in the MF-Snoqualmie wet basin, supporting this inference. Overbank deposition of wood on the floodplain was only observed rarely in this basin, indicating that the OC measured in these soils is likely dominantly autochthonous.

In the Big Sandy semi-arid basin, the two cores that exhibited peaks were collected from the same meadow, just downstream of a now-filled former lake that is a potential source of fine sediment. The channels draining this meadow exhibit an anabranching planform, indicating the potential to deposit and bury packets of potentially OC-rich, fine sediments. However, the majority of cores ~~did do~~ not exhibit OC peaks, indicating OC input mainly from vegetation at the surface and continuing OC respiration at depth.

OC variation within each core is dominantly a function of depth. We observe a negative correlation between depth below ground surface and OC concentration, which has been observed in other studies, including mountain wetlands and floodplains (Jobbágy and Jackson, 2000; Scott and Wohl, 2017; Sutfin and Wohl, 2017; Zhao et al., 2017). In general, this indicates that at least in mountain river floodplains, OC is enriched at the surface and decomposes with depth, similar to upland soils. This fits with our finding that the majority of our cores do not exhibit significant OC peaks at depth and supports the dominance of litter and wood OC inputs to floodplain soils. These results support our hypothesis that decaying litter and wood, not overbank sediment deposition, dominates the input of OC to floodplain soils in our study basins (H3). We note that floodplain wood may also act as a trapping site for overbank fine organic matter, facilitating the deposition and input of OC from decaying vegetation. While these study basins likely accumulate soil OC mainly autochthonously, ~~Other~~ basins that experience overbank flows, accompanying deposition of fine sediment, and burial of organic layers exhibit OC storage that is likely dominated by fluvial sediment deposition (e.g., Blazejewski et al., 2009; D'Elia et al., 2017; Ricker et al., 2013). Thus, it is likely that flow regime, lateral connectivity, and sediment transport dynamics regulate whether floodplain soil OC is dominantly input by overbank deposition of fine material or ~~decaying litter and wood~~. litter and wood decay.

### 4.3 Conceptual Model of Soil OC Concentration in Floodplain Soils

We present a conceptual model to summarize our results and place them in the context of ~~recent~~ work examining the controls on OC storage in soils (Figure 43). OC is input to floodplains either through the decay of vegetation or the deposition of fine, OC-rich sediment. This input of OC only determines OC concentrations insofar as floodplain soils are capable of storing OC. That storage is effectively determined by a balance between processes that remove OC from floodplains, namely respiration or erosion followed by respiration (Berhe et al., 2007), and

processes that regulate OC availability to microbes, namely the capability of the mineral fraction of the soil to sorb OC.

OC sorption capacity reflects a few specific processes. Although soil texture generally relates to the ability of OC to sorb to mineral grains and resulting OC availability, soil chemistry also plays a strong (and potentially dominant) role in regulating OC sorption capacity (Rasmussen et al., 2018). Soil texture is largely determined by valley morphology, according to our modeling (Table 1), placing valley morphology and resulting sediment transport dynamics (Gran and Czuba, 2017; Wohl et al., 2017b) as ~~an indirect control~~ indirect controls on sorption capacity.

Respiration rate is largely determined by microbial activity and the availability of OC to microbes. Erosion can rapidly expose soil OC to microbial respiration (Berhe et al., 2007), whereas soils that reside in largely anoxic conditions can exhibit low rates of microbial respiration (Boye et al., 2017). In addition, soil mineralogy, chemistry, and redox conditions (Keiluweit et al., 2017) can regulate microbial activity (e.g., andic soils may limit microbial respiration; (Matus et al., 2014). Our results suggesting that moisture controls OC content support the idea that drier soils likely have higher rates of microbial respiration of OC. Moisture is a function of texture, valley bottom morphology, and elevation (a proxy for temperature) in our modeling (Table 1). Comparing floodplain types in the ~~MF Snoqualmie~~ basin, we find that types with standing water exhibit significantly higher soil moisture contents than those without standing water. This indicates spatial variability in moisture content and likely microbial activity (Howard and Howard, 1993). In our modeling, this effect translates to spatial variability in OC concentration within floodplains and across entire basins.

OC export from soils refers specifically to leaching of dissolved OC, mainly from shallow soils. While we do not directly consider OC export in this study, it likely introduces variability in soil OC concentration and is regulated dominantly by hydrology (Ågren et al., 2014; McDowell and Likens, 1988), soil pore water chemistry (including pH and ionic strength; (Brooks et al., 1999; Evans et al., 2006), and redox conditions (Knorr, 2013). OC export as DOC can act in conjunction with respiration to remove OC from soils, and, like respiration rate, is countered by sorption capacity.

To summarize, ~~we propose that~~ OC inputs ~~are~~ regulated by the capacity of soils to store OC and suppress microbial respiration and OC export, determine OC concentrations in floodplain soils (Figure 4), allowing OC to accumulate. OC inputs to floodplain soils come from either autochthonous litter accumulation on the floodplain surface, allochthonous wood deposition, or allochthonous deposition of fine, OC-bearing sediments. Our results from the mountainous basins we studied suggest that ~~In these systems,~~ deposition of fine material in overbank flows is rare, leading us to infer that autochthonous litter and allochthonous wood inputs to floodplains dominate OC input in mountain rivers. Where soils are more moist, microbial respiration is inhibited and more OC is stored. Although soil texture is likely not a limiting factor on OC concentration in these floodplains, finer textured soils likely have a higher sorption capacity, retaining more of the OC input from decaying plant material. Our results indicate that geomorphic and hydrologic characteristics act as boundary conditions that regulate soil texture and moisture, in turn regulating sorption capacity, respiration rate, and resulting OC concentrations in floodplain soils.



## 5. Conclusion

We present floodplain soil OC concentration data from two disparate watersheds to compare how inter-basin variability between the two watersheds compares with intra-basin variability in geomorphic and hydrologic characteristics in determining OC concentration. Our results indicate that OC concentration in mountain floodplain soils does not vary predictably along a longitudinal gradient, nor does it vary substantially between basins with differing climatic and vegetation characteristics. Instead, geomorphic and hydrologic characteristics, such as valley bottom morphology and soil moisture, dominantly determine floodplain OC concentration.

In our study basins, decaying litter and wood, and not overbank deposition of fine, OC-bearing sediment, is the main source of OC to floodplain soils. It is unclear whether that decaying vegetation is dominated by autochthonous litter inputs or transported downed wood. In comparing our basin to other studied floodplain soils, it seems that vegetation dynamics play a strong role in determining OC concentrations when fine sediment is not regularly deposited on floodplain surfaces. However, we suggest that floodplain soil characteristics, set by geomorphic and hydrologic conditions, regulate how OC inputs translate to the spatial distribution of OC along a river network.

This implies that OC storage in floodplains likely cannot be predicted using consistent, downstream trends, and that management prioritization designed to facilitate floodplain OC storage should be based on local geomorphic and hydrologic process variability within each basin. For instance, management to increase OC sequestration in floodplain soils will likely be more effective where floodplains are unconfined and soils already experience high moisture conditions for much of the year. Along these lines, our results show that modeling the floodplain biospheric OC pool to predict its response to warming and subsequent effects on climate based on regional factors such as climate and net primary productivity likely misses the substantial inter-basin variability in OC concentration and storage resulting from variability in valley bottom geometry and both geomorphic and hydrologic processes (e.g., Doetterl et al., 2015).

Although our results provide some insights, the question of whether OC stored in floodplain soil comes dominantly from allochthonous versus autochthonous sources remains open. Our results imply that more productive, spatially heterogeneous floodplains likely input more OC to soils. Floodplain OC concentration, while mediated largely by moisture dynamics, likely depends mainly on OC inputs from productive riparian forests. This implies that management of OC storage in mountain river floodplains should focus on the restoration of riparian zones to maintain OC input to soil (e.g., Bullinger-Weber et al., 2014). More detailed studies in regions with varying sediment transport and hydrologic regimes are needed to determine what conditions favor autochthonous versus allochthonous OC inputs, but our results suggest that autochthonous sources dominate floodplain OC storage in basins with relatively low rates of vertical accretion and high channel-floodplain connectivity that promotes floodplain wetlands.

## Acknowledgements

This work was funded by NSF grant EAR-1562713. We thank Ellen Daugherty for extensive assistance in field work and discussion that improved the conceptual model. We thank~~and~~ Katherine Lininger for stimulating discussion that improved the manuscript. Detailed and constructive comments from two anonymous reviewers improved the manuscript. We thank Sara Lowe for assistance in processing and analyzing soil samples. All data supporting the analyses presented here can be found in Table S1.

## References

- 10 Ågren, A. M., Buffam, I., Cooper, D. M., Tiwari, T., Evans, C. D. and Laudon, H.: Can the heterogeneity in stream dissolved organic carbon be explained by contributing landscape elements?, *Biogeosciences*, 11(4), 1199–1213, doi:10.5194/bg-11-1199-2014, 2014.
- Appling, A. P., Bernhardt, E. S. and Stanford, J. A.: Floodplain biogeochemical mosaics: A multi-dimensional view of alluvial soils, *J. Geophys. Res. Biogeosciences*, 119(8), 1538–1553, doi:10.1002/2013JG002543, 2014.
- 15 Aufdenkampe, A. K., Mayorga, E., Raymond, P. A., Melack, J. M., Doney, S. C., Alin, S. R., Aalto, R. E. and Yoo, K.: Riverine coupling of biogeochemical cycles between land, oceans, and atmosphere, *Front. Ecol. Environ.*, 9, 53–60, doi:10.1890/100014, 2011.
- Ballantyne, A. P., Alden, C. B., Miller, J. B., Tans, P. P. and White, J. W. C.: Increase in observed net carbon dioxide uptake by land and oceans during the past 50 years, *Nature*, 488, 70–73, doi:10.1038/nature11299, 2012.
- 20 Bao, H., Kao, S., Lee, T., Zehetner, F., Huang, J., Chang, Y., Lu, J. and Lee, J.: Distribution of organic carbon and lignin in soils in a subtropical small mountainous river basin, *Geoderma*, 306(May), 81–88, doi:10.1016/j.geoderma.2017.07.011, 2017.
- Battin, T. J., Luysaert, S., Kaplan, L. A., Aufdenkampe, A. K., Richter, A. and Tranvik, L. J.: The boundless carbon cycle, *Nat. Geosci.*, 2(9), 598–600, doi:10.1038/ngeo618, 2009.
- Benfield, E. F.: Comparison of Litterfall Input to Streams, *J. North Am. Benthol. Soc.*, 16(1), 104–108, doi:10.2307/1468242, 1997.
- 25 Berhe, A. A., Harte, J., Harden, J. W. and Torn, M. S.: The significance of the erosion-induced terrestrial carbon sink, *Bioscience*, 57(4), 337–346, doi:10.1641/B570408, 2007.
- Blazewski, G. A., Stolt, M. H., Gold, A. J., Gurwick, N. and Groffman, P. M.: Spatial Distribution of Carbon in the Subsurface of Riparian Zones, *Soil Sci. Soc. Am. J.*, 73(5), 1733, doi:10.2136/sssaj2007.0386, 2009.
- 30 Boye, K., Noël, V., Tfaily, M. M., Bone, S. E., Williams, K. H., Bargar, J. R. and Fendorf, S.: Thermodynamically controlled preservation of organic carbon in floodplains, *Nat. Geosci.*, (May), doi:10.1038/NCEO2940, 2017.
- Brooks, P. D., Mcknight, D. M. and Bencala, K. E.: The relationship between soil heterotrophic activity, soil dissolved organic carbon (DOC) leachate, and catchment-scale DOC export in headwater catchments, *Water Resour. Res.*, 35(6), 1895–1902, 1999.

- Bullinger-Weber, G., Le Bayon, R.-C. C., Thébault, A., Schlaepfer, R., Guenat, C., Thébault, A., Schlaepfer, R., Guenat, C., Thébault, A., Schlaepfer, R. and Guenat, C.: Carbon storage and soil organic matter stabilisation in near-natural, restored and embanked Swiss floodplains, *Geoderma*, 228–229, 122–131, doi:10.1016/j.geoderma.2013.12.029, 2014.
- 5 D’Elia, A. H., Liles, G. C., Viers, J. H. and Smart, D. R.: Deep carbon storage potential of buried floodplain soils, *Sci. Rep.*, 7(1), 8181, doi:10.1038/s41598-017-06494-4, 2017.
- Doetterl, S., Stevens, A., Six, J., Merckx, R., Oost, K. Van, Pinto, M. C., Casanova-katny, A., Muñoz, C., Boudin, M., Venegas, E. Z. and Boeckx, P.: Soil carbon storage controlled by interactions between geochemistry and climate, *Nat. Geosci.*, 8(10), 780–783, doi:10.1038/NGEO2516, 2015.
- 10 Evans, C. D., Chapman, P. J., Clark, J. M., Monteith, D. T. and Cresser, M. S.: Alternative explanations for rising dissolved organic carbon export from organic soils, *Glob. Chang. Biol.*, 12, 2044–2053, doi:10.1111/j.1365-2486.2006.01241.x, 2006.
- Fall, P. L.: Modern Pollen Spectra and Vegetation in the Wind River Range, Wyoming, U.S.A., *Arct. Alp. Res.*, 26(4), 383–392, 1994.
- 15 Falloon, P., Jones, C. D., Ades, M. and Paul, K.: Direct soil moisture controls of future global soil carbon changes: An important source of uncertainty, *Global Biogeochem. Cycles*, 25(3), 1–14, doi:10.1029/2010GB003938, 2011.
- Gran, K. B. and Czuba, J. A.: Sediment pulse evolution and the role of network structure, *Geomorphology*, 277, 17–30, doi:10.1016/j.geomorph.2015.12.015, 2017.
- Hanberry, B. B., Kabrick, J. M. and He, H. S.: Potential tree and soil carbon storage in a major historical floodplain forest with disrupted ecological function, *Perspect. Plant Ecol. Evol. Syst.*, 17(1), 17–23, doi:10.1016/j.ppees.2014.12.002, 2015.
- 20 Harvey, J. W. and Gooseff, M.: River corridor science: Hydrologic exchange and ecological consequences from bedforms to basins, *Water Resour. Res.*, 51, 6893–6922, doi:10.1002/2015WR017617, 2015.
- Hilton, R. G., Galy, A., Hovius, N., Horng, M. J. and Chen, H.: Efficient transport of fossil organic carbon to the ocean by steep mountain rivers: An orogenic carbon sequestration mechanism, *Geology*, 39(1), 71–74, doi:10.1130/G31352.1, 2011.
- 25 Hoffmann, T., Glatzel, S. and Dikau, R.: A carbon storage perspective on alluvial sediment storage in the Rhine catchment, *Geomorphology*, 108(1–2), 127–137, doi:10.1016/j.geomorph.2007.11.015, 2009.
- Holm, S.: A Simple Sequentially Rejective Multiple Test Procedure, *Scand. J. Stat.*, 6(2), 65–70, 1979.
- 30 Homer, C. G., Dewitz, J. A., Yang, L., Jin, S., Danielson, P., Xian, G., Coulston, J., Herold, N. D., Wickham, J. D. and Megown, K.: Completion of the 2011 National Land Cover Database for the conterminous United States—Representing a decade of land cover change information, *Photogramm. Eng. Remote Sensing*, 81(5), 345–354, 2015.
- Hoogsteen, M. J. J., Lantinga, E. A., Bakker, E. J., Groot, J. C. J. and Tittonell, P. A.: Estimating soil organic carbon

- through loss on ignition: Effects of ignition conditions and structural water loss, *Eur. J. Soil Sci.*, 66(2), 320–328, doi:10.1111/ejss.12224, 2015.
- Houston, D. B.: Wildfires in Northern Yellowstone National Park, *Ecology*, 54(5), 1111–1117, doi:10.2307/1935577, 1973.
- 5 Howard, D. M. and Howard, P. J. A.: Relationships between CO<sub>2</sub> evolution, moisture content and temperature for a range of soil types, *Soil Biol. Biochem.*, 25(11), 1537–1546, doi:10.1016/0038-0717(93)90008-Y, 1993.
- Jobbágy, E. G. and Jackson, R. B.: The vertical distribution of soil organic carbon and its relation to climate and vegetation, *Ecol. Appl.*, 10(2), 423–436, doi:10.1890/1051-0761(2000)010[0423:TVDOSO]2.0.CO;2, 2000.
- Kaiser, K. and Guggenberger, G.: The role of DOM sorption to mineral surfaces in the preservation of organic matter in soils, *Org. Geochem.*, 31(7–8), 711–725, doi:10.1016/S0146-6380(00)00046-2, 2000.
- 10 Keiluweit, M., Wanzek, T., Kleber, M., Nico, P. and Fendorf, S.: Anaerobic microsites have an unaccounted role in soil carbon stabilization, *Nat. Commun.*, 8(1), 1–8, doi:10.1038/s41467-017-01406-6, 2017.
- Knorr, K.: DOC-dynamics in a small headwater catchment as driven by redox fluctuations and hydrological flow paths – are DOC exports mediated by iron reduction / oxidation cycles ?, *Biogeosciences*, 10, 891–904, doi:10.5194/bg-10-891-2013, 2013.
- 15 Leithold, E. L., Blair, N. E. and Wegmann, K. W.: Source-to-sink sedimentary systems and global carbon burial: A river runs through it, *Earth-Science Rev.*, 153, 30–42, doi:10.1016/j.earscirev.2015.10.011, 2016.
- Lininger, K. B., Wohl, E. and Rose, J. R.: Geomorphic Controls on Floodplain Soil Organic Carbon in the Yukon Flats, Interior Alaska, From Reach to River Basin Scales, *Water Resour. Res.*, doi:10.1002/2017WR022042, 2018.
- 20 Loope, L. L. and Gruell, G. E.: The ecological role of fire in the Jackson Hole area, northwestern Wyoming, *Quat. Res.*, 3(3), 425–443, doi:10.1016/0033-5894(73)90007-0, 1973.
- Matus, F., Rumpel, C., Neculman, R., Panichini, M. and Mora, M. L.: Soil carbon storage and stabilisation in andic soils: A review, *Catena*, 120, 102–110, doi:10.1016/j.catena.2014.04.008, 2014.
- McDowell, W. H. and Likens, G. E.: Origin, Composition, and Flux of Dissolved Organic Carbon in the Hubbard Brook Valley, *Ecol. Monogr.*, 58(3), 177–195, 1988.
- 25 Montgomery, D. R. and Buffington, J. M.: Channel-reach morphology in mountain drainage basins, *Bull. Geol. Soc. Am.*, 109(5), 596–611, 1997.
- Omengo, F. O., Geeraert, N., Bouillon, S. and Govers, G.: Deposition and fate of organic carbon in floodplains along a tropical semiarid lowland river (Tana River, Kenya), *J. Geophys. Res. G Biogeosciences*, 121(4), 1131–1143, doi:10.1002/2015JG003288, 2016.
- 30 Oregon State University: PRISM Climate Group, 2004.
- R Core Team: R: A Language and Environment for Statistical Computing, 2017.

- Rasmussen, C., Heckman, K., Wieder, W. R., Keiluweit, M., Lawrence, C. R., Berhe, A. A., Blankinship, J. C., Crow, S. E., Druhan, J. L., Hicks Pries, C. E., Marin-Spiotta, E., Plante, A. F., Schädel, C., Schimel, J. P., Sierra, C. A., Thompson, A. and Wagai, R.: Beyond clay: towards an improved set of variables for predicting soil organic matter content, *Biogeochemistry*, doi:10.1007/s10533-018-0424-3, 2018.
- 5 Rathburn, S. ., Bennett, G. L., Wohl, E., Briles, C., McElroy, B. and Sutfin, N.: The fate of sediment, wood, and organic carbon eroded during an extreme flood, Colorado Front Range, USA, *Geology*, 45(6), 1–14, doi:10.1130/G38935.1, 2017.
- Ricker, M. C., Stolt, M. H., Donohue, S. W., Blazejewski, G. A. and Zavada, M. S.: Soil Organic Carbon Pools in Riparian Landscapes of Southern New England, *Soil Sci. Soc. Am. J.*, 77(3), 1070–1079, doi:10.2136/sssaj2012.0297, 2013.
- 10 Schimel, D. S. and Braswell, B. H.: The role of mid-latitude mountains in the carbon cycle: Global perspective and a Western U.S. case study, in *Global Change and Mountain Regions*, edited by U. M. Huber, H. K. M. Bugmann, and M. A. Reasoner, pp. 449–456, Springer., 2005.
- Schmidt, M. W. I. I., Torn, M. S., Abiven, S., Dittmar, T., Guggenberger, G., Janssens, I. A., Kleber, M., Kögel-Knabner, I., Lehmann, J., Manning, D. A. C. C., Nannipieri, P., Rasse, D. P., Weiner, S. and Trumbore, S. E.: Persistence of soil organic matter as an ecosystem property, *Nature*, 478(7367), 49–56, doi:10.1038/nature10386, 2011.
- 15 Scott, D. N. and Wohl, E.: Evaluating Carbon Storage on Subalpine Lake Deltas, *Earth Surf. Process. Landforms*, doi:10.1002/esp.4110, 2017.
- 20 Scott, D. N. and Wohl, E.: Natural and Anthropogenic Controls on Wood Loads in River Corridors of the Rocky, Cascade, and Olympic Mountains, USA, *Water Resour. Res.*, doi:https://hdl.handle.net/10217/186057, 2018.
- Smithwick, E., Harmon, M. E., Remillard, S. M., Acker, S. A. and Franklin, J. F.: Potential upper bounds of carbon stores in forests of the Pacific Northwest, *Ecol. Appl.*, 12(5), 1303–1317, doi:10.1890/1051-0761(2002)012[1303:PUBOCS]2.0.CO;2, 2002.
- 25 Sparks, D. L.: *Methods of Soil Analysis. Part 3, Chemical Methods*, edited by D. L. Sparks, A. L. Page, P. A. Helmke, R. H. Loeppert, P. N. Soltanpour, M. A. Tabatabai, C. T. Johnston, M. E. Sumer, J. M. Bartels, and J. M. Bingham, Soil Science Society of America, Inc., Madison, Wisconsin., 1996.
- Sun, O. J., Campbell, J., Law, B. E. and Wolf, V.: Dynamics of carbon stocks in soils and detritus across chronosequences of different forest types in the Pacific Northwest, USA, *Glob. Chang. Biol.*, 10(9), 1470–1481, doi:10.1111/j.1365-2486.2004.00829.x, 2004.
- 30 Sutfin, N. A. and Wohl, E.: Substantial soil organic carbon retention along floodplains of mountain streams, *J. Geophys. Res. Earth Surf.*, 122(7), 1325–1338, doi:10.1002/2016JF004004, 2017.
- Sutfin, N. A., Wohl, E. and Dwire, K. A.: Banking carbon: A review of organic carbon storage and physical factors influencing retention in floodplains and riparian ecosystems, *Earth Surf. Process. Landforms*, 60, 38–60,

doi:10.1002/esp.3857, 2016.

Thien, S. J.: A flow diagram for teaching texture-by-feel analysis, *J. Agron. Educ.*, 8(2), 1979.

Wagenmakers, E.-J. and Farrell, S.: AIC model selection using Akaike weights., *Psychon. Bull. Rev.*, 11(1), 192–196, doi:10.3758/BF03206482, 2004.

- 5 Wilcoxon, F.: Individual Comparisons by Ranking Methods, *Biometrics Bull.*, 1(6), 80–83, doi:10.2307/3001946, 1945.

Wohl, E.: Floodplains and wood, *Earth-Science Rev.*, 123, 194–212, doi:10.1016/j.earscirev.2013.04.009, 2013.

Wohl, E. and Pfeiffer, A.: Organic carbon storage in floodplain soils of the U.S. prairies, *River Res. Appl.*, 34(5), 406–416, doi:10.1002/rra.3269, 2018.

- 10 Wohl, E., Dwire, K., Sutfin, N., Polvi, L. and Bazan, R.: Mechanisms of carbon storage in mountainous headwater rivers., *Nat. Commun.*, 3, 1263, doi:10.1038/ncomms2274, 2012.

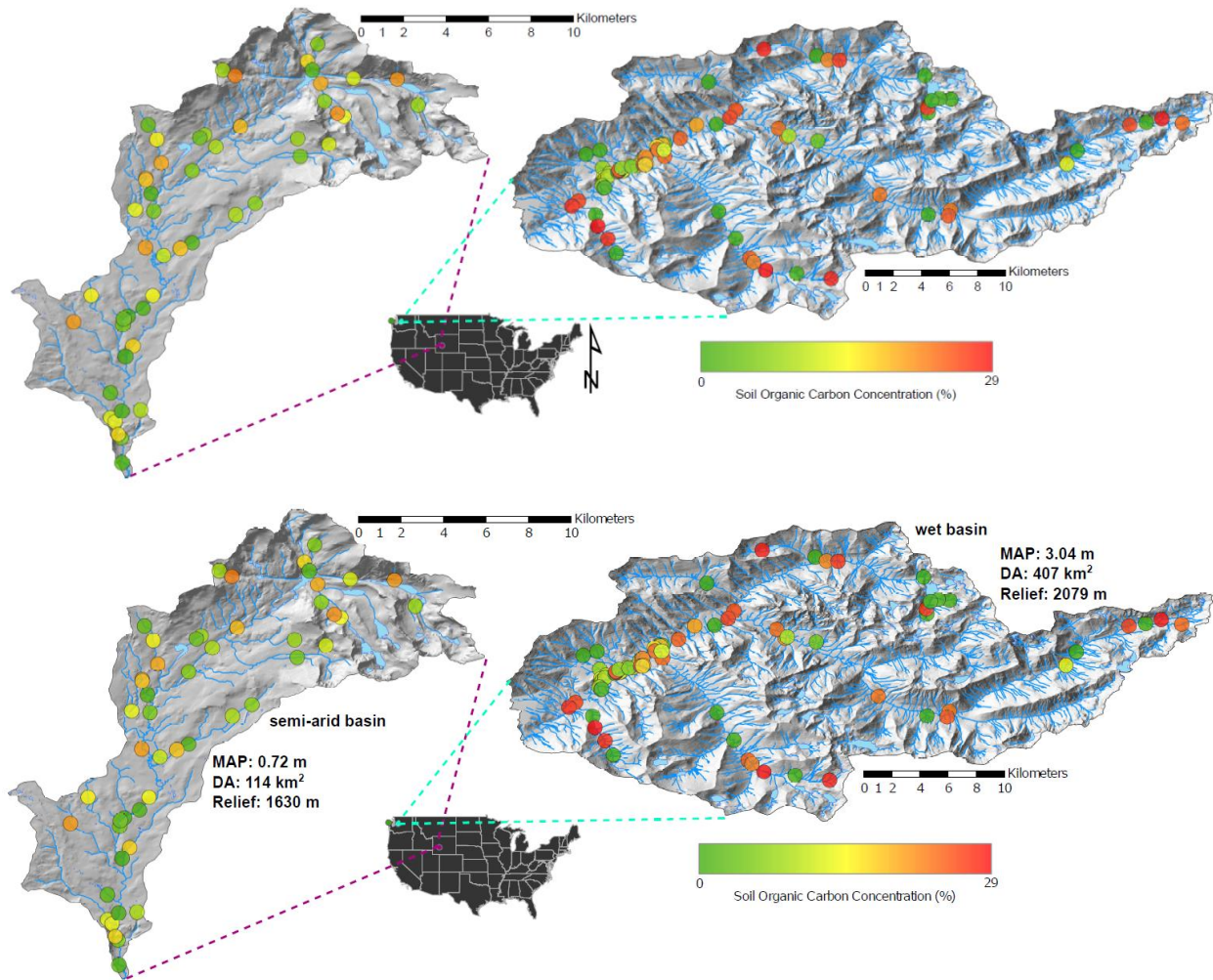
Wohl, E., Hall, R. O., Lininger, K. B., Sutfin, N. A. and Walters, D. M.: Carbon dynamics of river corridors and the effects of human alterations, *Ecol. Monogr.*, 87(3), 379–409, doi:10.1002/ecm.1261, 2017a.

- 15 Wohl, E., Lininger, K. B. and Scott, D. N.: River beads as a conceptual framework for building carbon storage and resilience to extreme climate events into river management, *Biogeochemistry*, doi:10.1007/s10533-017-0397-7, 2017b.

Zhao, B., Li, Z., Li, P., Xu, G., Gao, H., Cheng, Y., Chang, E., Yuan, S., Zhang, Y. and Feng, Z.: Spatial distribution of soil organic carbon and its influencing factors under the condition of ecological construction in a hilly-gully watershed of the Loess Plateau, China, *Geoderma*, 296, 10–17, doi:10.1016/j.geoderma.2017.02.010, 2017.

20

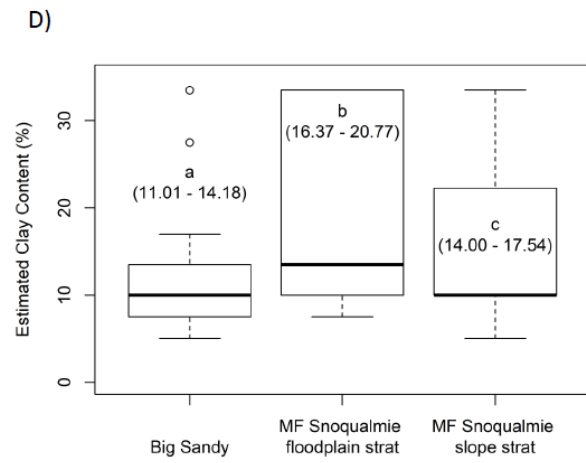
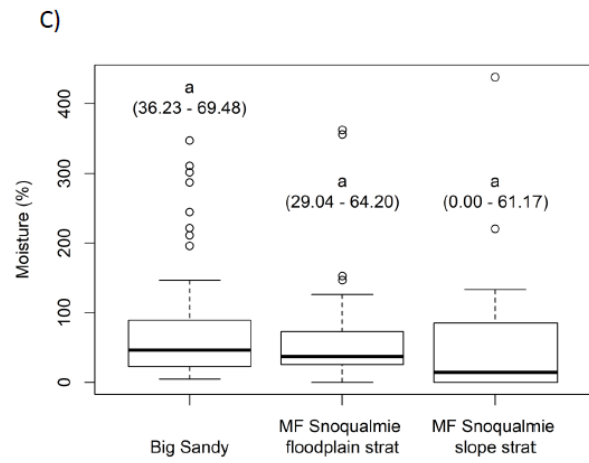
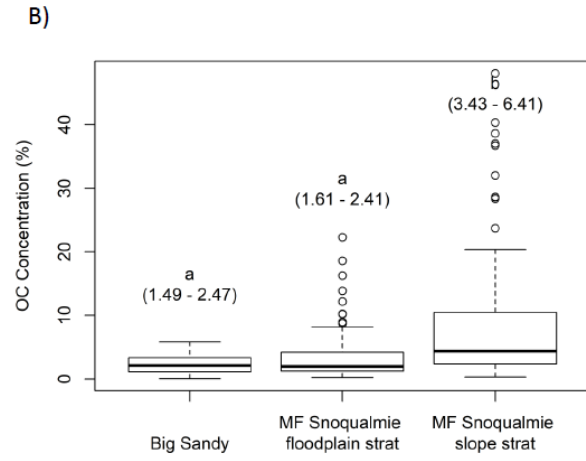
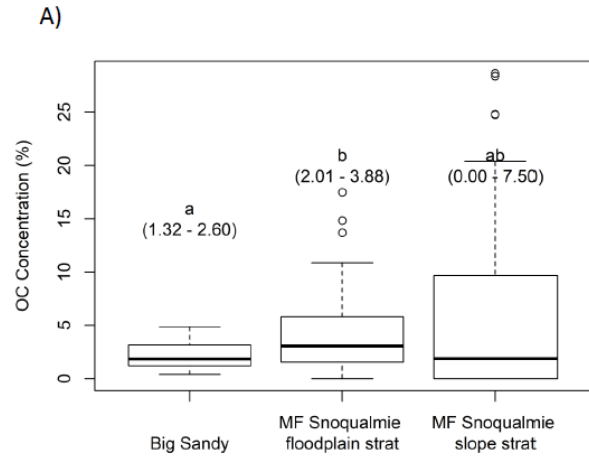
Figures



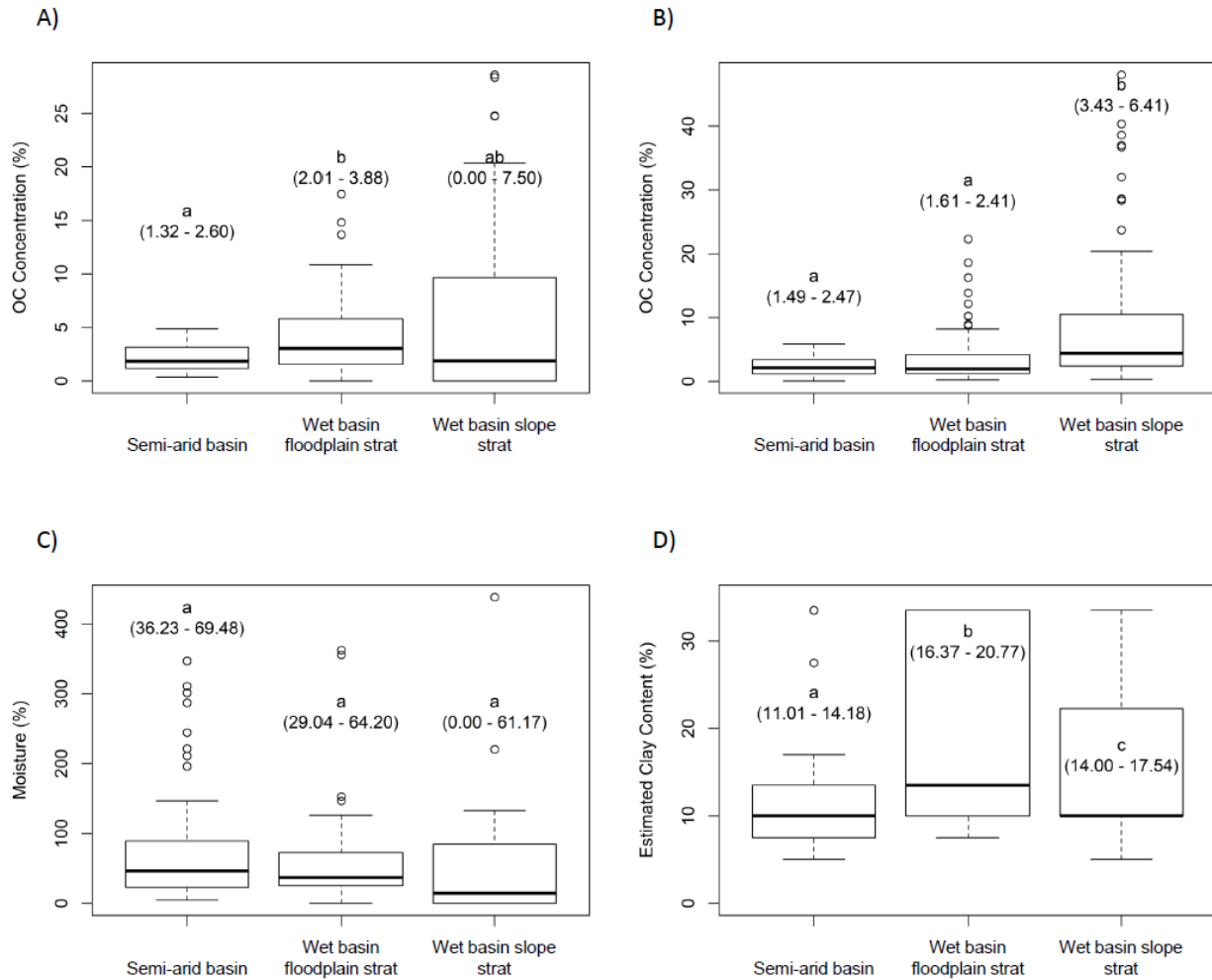
5

Figure 1: **HillshadeMap** showing the location, **topography**, sampling sites, and stream network of the sampled basins. Big Sandy, Wyoming ( $42.69^\circ$ ,  $-109.25^\circ$ ), on left and MF Snoqualmie, Washington ( $47.53^\circ$ ,  $-121.52^\circ$ ), on right. Circles represent sampling locations at which floodplain soil OC was measured. Sample sites are colored by OC concentration. **Mean annual precipitation (MAP), drainage area (DA), and relief are given for each basin.**

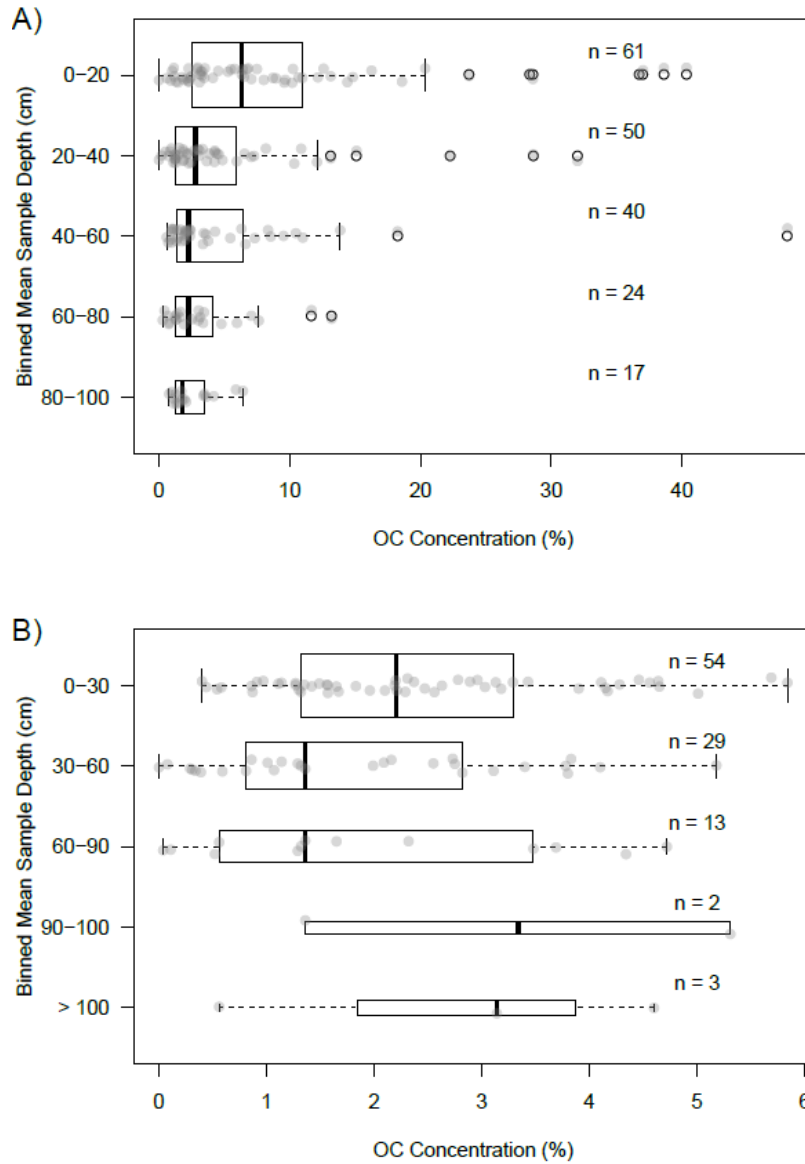
10





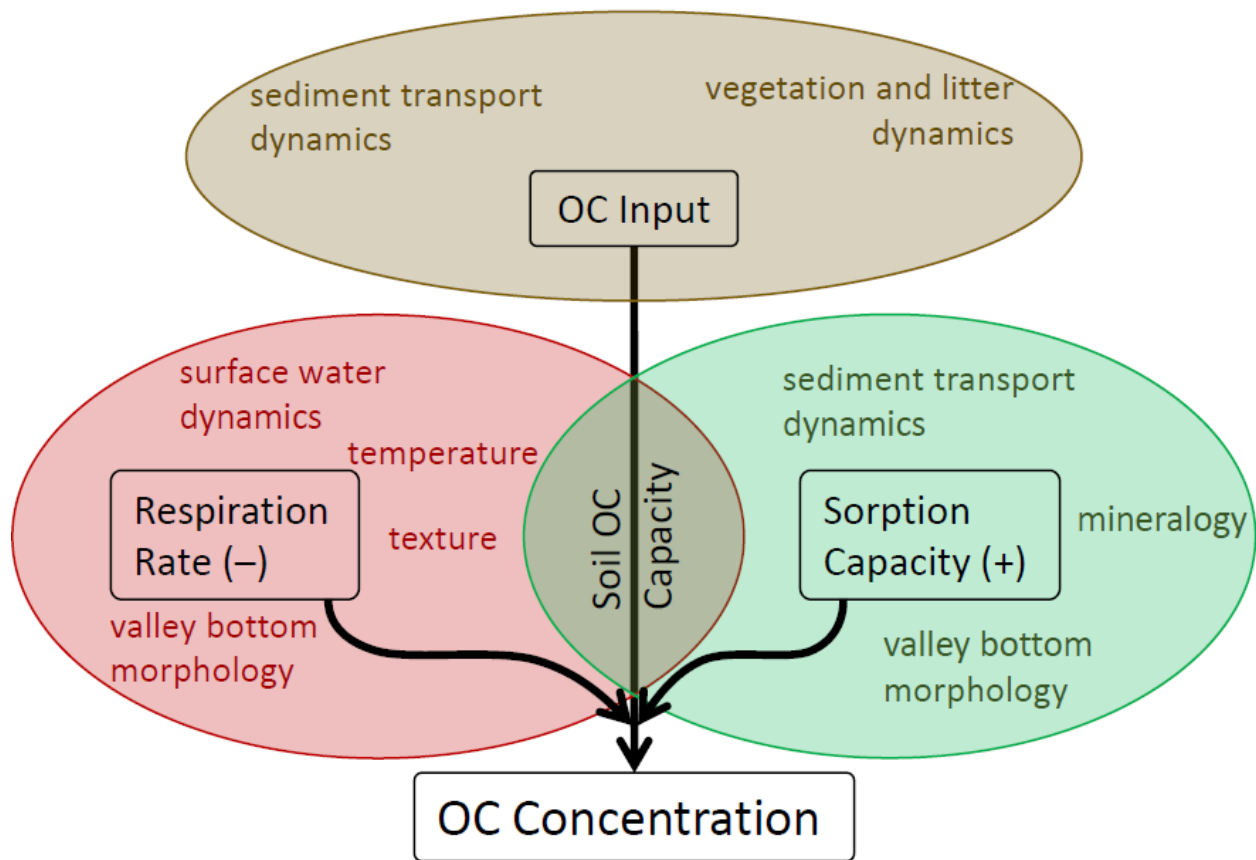


**Figure 2: Boxplots showing comparisons between model groups of OC concentration at the reach-scale (A), OC concentration at the scale of individual soil samples (B), moisture at the reach-scale (C), and estimated clay content at the scale of individual soil samples (D). Ends of dotted lines represent 1.5 times the inter-quartile range, which is represented by boxes. Bold line represents median. Circles represent outliers. Letters indicate probable differences between groups based on pairwise Wilcoxon (A-C) or t tests (D) with a holm correction. Ranges in parentheses below letters show the 95% confidence interval on the median value for the group (A-C) or the mean value for the group (D) where median confidence intervals were overly constrained due to the categorical nature of our estimated clay content data.**



**Figure 3: Boxplots of sample OC concentration binned by mean sample depth for the wet (A) and semi-arid (B) basins. Ends of dotted lines represent 1.5 times the inter-quartile range, which is represented by boxes. Bold line represents median. Black circles represent outliers. Transparent grey points show all data for each bin. Sample size for each bin is denoted by n.**

5



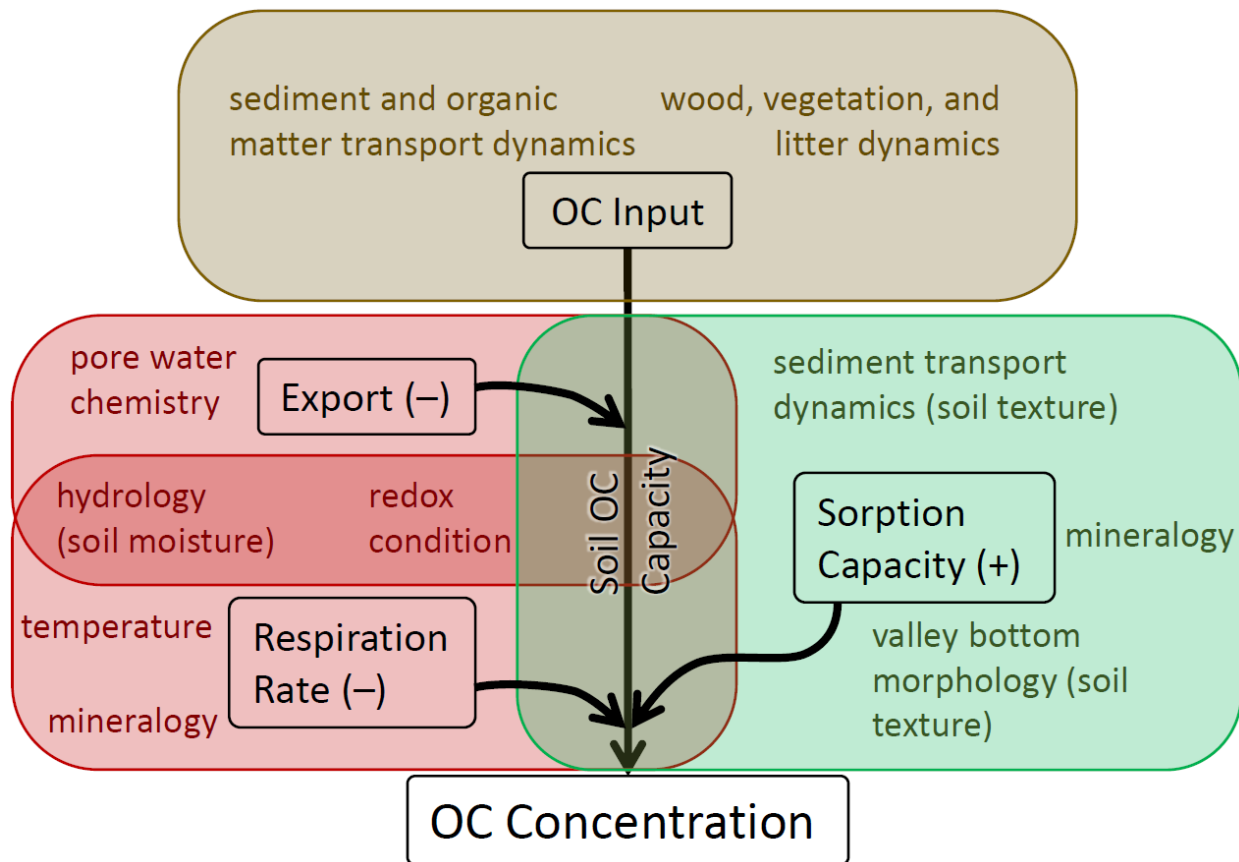


Figure 43: Conceptual model of physical processes that influence OC concentration in floodplain soils, based on this study and other literature. Each ellipse-box corresponds to a major factor that influences OC

concentration. Colored text within each ellipse-box denotes factors that influence OC inputs, sorption

5 capacity, OC export, or respiration rate (note that some processes influence both OC export and respiration

rate). As sorption capacity increases, so does the OC capacity of the soil. Conversely, as the rate of respiration

rate (or likelihood) and/or OC export increases, the soil OC capacity decreases. Floodplain soils can only

develop high concentrations of OC if there are high rates of OC input. However, the capacity of the soils to

10 store OC regulates that input, and is determined by the competing influences of sorption capacity and the

combination of respiration rate and OC export. See text for further details.

12 **Tables**

13

14 **Table 1: Matrix of all models presented in text. Each model is listed by model group, response variable, and scale. Scale refers to the sample unit of the**  
15 **model, where site refers to a core, with the response averaged over all the individual soil samples in the core. For each variable and model, grey fill**  
16 **indicates that the variable was included in either model selection or the full mixed-effects model. A minus (-) indicates that the variable was selected as**  
17 **important in predicting the response, and denotes an indirect correlation, whereas a plus (+) indicates a direct correlation. In the case of confinement, a**  
18 **plus indicates that unconfined streams display a higher magnitude response variable. In the case of bed material, a plus indicates that samples with**  
19 **sand exhibit a higher value of the response. NA indicates that either the variable wasn't measured for that basin or model group or that it is the model**  
20 **response.**

21

<u>Model Group</u>	<u>Response</u>	<u>Scale (Sample Unit)</u>	<b>Variables</b>																						
			Confinement	Bedform	Channel Slope	Bed Material	Multithread	Valley Width	Bankfull Width	Bankfull Depth	Stream Power	Floodplain Type	Standing Water	Depth <sup>1</sup>	Clay Content	Moisture	Logging Nearby	Grasses Present	Shrubs Present	Trees Present	Elevation	Basin Slope	Canopy Cover	NLCD	Drainage Area
<b>MF</b> <i>Snoqualmie wet basin stratified by slope</i>	OC (%)	Soil Sample										NA	NA	-							+				
	OC (%)	Site	+									NA	NA			+									
	Moisture (%)	Site	+		-							NA	NA			NA						+			
	Texture (%)	Soil Sample	+			+						NA	NA		NA										
<b>MF</b> <i>Snoqualmie wet basin stratified by floodplain type</i>	OC (%)	Soil Sample	NA	NA	NA	NA	NA	NA	NA	NA	NA			-											NA
	OC (%)	Site	NA	NA	NA	NA	NA	NA	NA	NA	NA					+							+		NA
	Moisture (%)	Site	NA	NA	NA	NA	NA	NA	NA	NA	NA		+		+	NA									NA
	Texture <sup>2</sup> (%)	Soil Sample	NA	NA	NA	NA	NA	NA	NA	NA	NA				NA										NA
<b>Big</b> <i>Sandysemi-arid basin</i>	OC (%)	Soil Sample		NA		NA	NA		NA	NA		NA	NA	-			NA	NA	NA	NA					
	OC (%)	Site		NA		NA	NA		NA	NA		NA	NA	-		+	NA	NA	NA	NA					
	Moisture (%)	Site	+	NA		NA	NA		NA	NA		NA	NA	+		NA	NA	NA	NA	NA		+			
	Texture <sup>3</sup> (%)	Soil Sample	+	NA		NA	NA	+	NA	NA		NA	NA	-	NA		NA	NA	NA	NA					

22 <sup>1</sup> Depth refers to either the soil sample depth below the ground or the total depth of the core, depending on the sample unit.

23 <sup>2</sup> No significant results were observed for this model.

24 <sup>3</sup> For this model, both valley width and confinement predict texture and can be interpreted interchangeably. However, including both  
 25 in the same model would yield problems due to multicollinearity.

26