

Deep-seated gravitational slope deformation scaling on Mars and Earth: same fate for different initial conditions and structural evolutions

Olga Kromuszczyńska¹, Daniel Mège^{2,3,4}, Krzysztof Dębniak¹, Joanna Gurgurewicz^{1,2}, Magdalena Makowska¹ and Antoine Lucas⁵

¹Institute of Geological Sciences, Polish Academy of Sciences, Research Centre in Wrocław, Podwale 75, 50-449 Wrocław, Poland

²Space Research Centre, Polish Academy of Sciences, Bartycka 18A, 00-716 Warsaw, Poland

10 ³Laboratoire de Planétologie et Géodynamique, Université de Nantes, UMR CNRS 6112, 2 rue de la houssinière, Nantes, France

⁴Observatoire des Sciences de l'Univers Nantes Atlantique, OSUNA CNRS UMS 3281, Nantes, France

⁵Institut de Physique du Globe de Paris, Sorbonne Paris Cité, Université Paris, Diderot, Paris 75013, France

Correspondence to: Daniel Mège (dmege@cbk.waw.pl)

15 **Abstract.** Some of the most spectacular instances of deep-seated gravitational slope deformation (DSGSD) are found on Mars in the Valles Marineris region. They provide an excellent opportunity to study DSGSD phenomenology using a scaling approach. The topography of selected DSGSD scarps in Valles Marineris and in the Tatra Mountains is investigated after their likely similar postglacial origin is established. The deformed Martian ridges are larger than the deformed terrestrial ridges by one to two orders, with however a similar height-to-width ratio, ~ 0.24 . The measured horizontal spreading perpendicular to the ridges is proportionally 1.8 to 2.6 times larger for the Valles Marineris ridges than the Tatra Mountains, and vertically, 2.9 to 5.1 times, suggesting that starting from two different initial conditions, with steeper slopes in Valles Marineris, the final ridge geometry is now similar. Because DSGSD is expected to be now inactive in both regions, their comparison suggests that whatever the initial ridge morphology, DSGSD proceeds until a mature profile is attained. Fault displacements are therefore much larger on Mars. The large offsets imply reactivation of the DSGSD fault scarps in Valles Marineris, whereas single seismic events would be enough to generate DSGSD fault scarps in the Tatra Mountains. The required longer activity of the Martian faults may be correlated with a long succession of climate cycles generated by the unstable Mars obliquity. In spite of similar global geometry today, the studied ridges on Mars and Earth affected by DSGSD did not start from similar initial conditions and did not follow the same structural evolution.

20

25

1 Introduction

1.1 Deep-seated gravitational slope deformation

Deep-seated gravitational slope deformation (DSGSD) is a slow process that deforms mountain ridges, usually as a paraglacial process (e.g., Mège and Bourgeois, 2011) that is readily identified by uphill-facing normal fault scarps in the upper part of ridge slopes, resulting in ridge-top splitting and summital valley development. Extension at the upper part of the ridge, in the absence of catastrophic slope failure, results in many instances in compressive bulging (e.g., Radbruch-Hall et al., 1976; Beget, 1985; Savage and Varnes, 1987; Chigira, 1992; Reitner et al., 1993; Ambrosi and Crosta, 2006; Hippolyte et al., 2006; Discenza et al., 2011). In some cases, the slope is observed to be overthrusting the valley (Mahr, 1977; Guerricchio and Melidoro, 1979; Bachman et al., 2009; Savage and Varnes, 1987), which suggests that a décollement may connect the faults in the upper part of the slope with displacement at the bottom of the slope. Such décollements are more frequently inferred than observed in the field, and in some cases there is evidence that fault slip in the upper part of the slope is not connected by a continuous plane to the lower slope, and displacement in the ridge may be more diffuse, for instance due to the presence of shales (Radbruch-Hall et al., 1976; Beget, 1985; Hürlimann et al., 2006). In some instances, the bottom of the slope is not deformed and the extension in the upper part of the ridge is absorbed within the ridge, the density of which is locally increased (Discenza et al., 2011), possibly by crushing (Beck, 1968; Mahr, 1977). Makowska et al. (2016) found that in homogeneous rock indeed, DSGSD in the upper part of the slope and at the bottom are disconnected, and that an internal core of intensely deformed rock underlies the uphill-facing scarps developed in the upper part of the slope.

Such deformation has been reported on bedrock hillslopes in Valles Marineris on Mars (Mège and Bourgeois, 2011), but at the scale that is much larger than on Earth. For instance, ridge-top splitting on Earth generates scarps that rarely exceed metres in height, whereas on Mars, a quick look at digital elevation models shows that scarps are tens to hundreds of metres are not rare. This work quantifies this intriguing difference and explores some implications.

1.2 The dissected Valles Marineris hillslopes

The Valles Marineris bedrock hillslopes show a dissected, "spur-and-gully" morphology at a glance similar to the morphology of alpine mountains, locally degraded at the first order into tributary canyons and huge landslides (Lucchitta, 1978; Patton, 1991; Lucchitta et al., 1992). Spur-and-gully dissection has taken the form of subparallel, digitate spurs separated by gullies covered by long slope deposits (Lucchitta, 1978; Howard, 1989). The upper parts of the slopes are steeper than the lower parts (Lucchitta, 1978). The latter are covered by talus of material accumulated at the angle-of-repose (Patton, 1981). The spurs are usually perpendicular to the slope; however, in some areas, their oblique orientation relative to chasma trend suggests structural control by vertical fractures oblique to the troughs that must be tens of kilometres long (Sharp 1973; Blasius et al., 1977). High resolution image data available since the early 2000's have revealed that outside these tributary canyons and huge landslides, the dissected, pristine morphology shows a variety of smaller-scale geomorphological features which are familiar to mountain geomorphologists, with the association or superimposition of a rich variety of landforms controlled by mountain

permafrost degradation, fluvial erosion, talus development, and gravity (Mège and Bourgeois, 2011; Gourronc et al., 2014; Dębniak et al., 2017). The difference with alpine mountain geomorphology on Earth is therefore not that much a matter of morphological details; it rather lies in the size of the landsystems. In the main troughs, the height of the Valles Marineris slopes is several kilometres, and up to 9 km, whereas typical mountain slopes on Earth are hundreds of metres to a few kilometres high.

1.3 Deep-seated gravitational slope deformation in Valles Marineris

This work focuses on a series of morphotectonic features observed along Valles Marineris walls displaying the spur-and-gully morphology, including uphill-facing normal faults scarps and crestal grabens. Such features are systematically observed when spur-and-gully dissection occurs on internal ridges within the main Valles Marineris chasmata. They denote extensional tectonics, but boundary forces that result in crustal “rifting” are unlikely to be the cause of this deformation even though rifting is frequently considered to have been a major contributor to the formation of some of the main Valles Marineris chasmata (e.g., Masson, 1977; Frey, 1979; Schultz, 1991, 1995a, 1998; Mège and Masson, 1996a, 1996b; Peulvast et al., 2001; Mège et al., 2017). One of the main reasons is that uphill-facing scarps and crestal grabens have not been reported to have formed in terrestrial rift zones on Earth nor are they expected to form in experimental models (e.g., Corti, 2012 for the East African Rift System). In extreme cases, when crustal stretching has been on the order of hundreds of percent, cracking and normal faulting is pervasive in horsts as much as in grabens (Angelier and Colletta; 1983), which has certainly not been the case in Valles Marineris (e.g. Schultz 1991, 1995a; Mège and Masson 1996b; Mège et al. 2003; Andrews-Hanna, 2012).

Another reason is that when the basal ridge slope topography can be accurately studied (i.e. not mantled by debris aprons), normal faulting on the ridge crest and slopes appears to be counterbalanced by basal slope bulging (Mège and Bourgeois, 2011). Ridge-top splitting has been interpreted by Lucchitta et al. (1992) and Treiman (2008) as crustal zones strengthened by dyke intrusion or cemented by central fractures. Arguing that such a fracture origin is not well documented on Earth either, Mège and Bourgeois (2011), Kromuszczyńska et al. (2012) and Gourronc et al. (2014) interpreted these features as an effect of DSGSD. Uphill-facing normal faulting and crestal extensional deformation is indeed well documented on Earth in areas of DSGSD . In most described terrestrial instances, such as in the Alps of Europe, Japan, New Zealand, and the Andes, where DSGSD has been described in mountain ridges glaciated during the Quaternary (see a review in the supplementary material of Mège and Bourgeois, 2011), Such a postglacial context, in the Valles Marineris case, is adapted to the recently identified and widespread glacial landsystem (Gourronc et al., 2014; Mège et al., 2017; Dębniak et al., 2017), is also in agreement with expected slope deformation in this context (Makowska et al., 2016), and additionally provides a good framework (Mège and Bourgeois, 2011; Cull et al., 2014) to understand the detected mineralogical occurrences as from CRISM (Roach et al., 2010; Cull et al., 2014). Postglacial deformation, as far as DSGSD is concerned, includes the paraglacial response of rock slopes to changing stress conditions after glacier retreat, (e.g., Ballantyne, 2002), i.e. hillslope debuttreassing, but also some longer term deformation made possible or facilitated by slope debuttreassing. This includes upslope migration of stress release, and

postglacial water flow, pressure variations and subcritical failure occurring for instance within the framework of the geologic response to climate cyclicity (Pánek et al., 2017).

In this work, we will therefore assume that DSGSD is the most likely origin for the uphill-facing scarps and crestal grabens observed on the slopes of the Valles Marineris spur-and-gully ridges. We also consider that a postglacial origin is likely (Mège and Bourgeois, 2011; Gourronc et al., 2014), given its consistency and adaptation to the evidence of a widespread Valles Marineris glacial landsystem subject to short-period climatic variations (Laskar et al., 2004; Levrard et al., 2004) under which additional slope morphologies may develop (e.g., Quantin et al. 2005; Chojnacki et al., 2016).

1.4 Scaling of processes involved in deep-seated gravitational slope deformation

Some gravity processes do not similarly develop at different scales. For instance, landslide propagation does not depend on fully similar parameters when small and large. Landslides that are small with respect to mountain size are influenced by the surrounding mountainous topography, the first effect of which being the development of an inclined transport channel that overlies an accumulation of debris on a less inclined slope. An example is the Thurwieser landslide in the central Alps (e.g., Sosio et al., 2008). For landslides that involve a large fraction of the mountain slope, the deposits spread in the nearly flat valley or plain downstream, such as in the case of the Socompa rock avalanche in Chile (e.g., Kelfoun and Druitt, 2005), the Blackhawk landslide in California, United States (e.g., Shreve, 1987), and the Frank rock slide in Alberta, Canada (e.g., Daly et al., 1912). Although similar at first order, landslide propagation is not controlled by the same parameters because the landslide slope is different. It was shown that landslide volume is one of the factors that control landslide propagation (McEwen, 1989; Lucas et al., 2014; Johnson and Campbell, 2017) when the slope angle of the propagation plane is steeper than ca. 20° (Farin et al.; 2014; Borykov et al., submitted), whereas it has no influence for more gentle slopes.

This dependency of landslide propagation on slope, and indirectly on volume (and friction), initially identified on laboratory experiments (Farin et al., 2014), could be adequately documented by natural examples thanks to some very large Martian landslides (Johnson and Campbell, 2017; Borykov et al., submitted), much larger than any terrestrial landslide, which help populate the landslide dataset for voluminous landslides that propagate on nearly flat surfaces. Similar to landslides, DSGSD occurs on mountain slopes that are much smaller on Earth than on Mars, and at the first order, their origin may be similar.

However, like in the case of landslides, the difference in scale may be associated with differences in controlling parameters. We will not answer this complex question in this work, but instead provide quantitative information that may help in future works aiming at constraining the parameters that control DSGSD over a broad range of sizes.

1.5 Scaling with the Tatra Mountains

We compare DSGSD in Valles Marineris with DSGSD in the Tatra Mountains in Slovakia and Poland (Fig. 1), a historic region of DSGSD investigations (Jahn, 1964; Nemčok, 1972; Mahr, 1977). Investigating this potential analogue area is motivated both by some similarity in DSGSD development conditions, and easy field access.

DSGSD develops independent of the structure and lithology of the topographic ridge, although major strength contrasts affect the strain field and therefore the expected observed deformation (e.g., Makowska et al., 2016). Such contrasts may be provided by weak/strong rock contrasts and major faults. In Valles Marineris, the upper part of the slopes are thought to be volcanic, akin to trap series (McEwen et al., 1999. Beyer and McEwen, 2005), with thin lava layering in which jointing is pervasive.

5 This level may be viewed as a typical homogeneous rock mass (Hoek, 1983; Schultz, 1995b). The ridge material that makes the lower part of the ridges is usually covered by debris slopes. Nevertheless, when they are observed they appear to be made of a massive basement rock or magmatic intrusives (Williams et al., 2003). DSGSD scarps were studied in the Tatra Mountains during two periods of field work. The measured scarps are located in a granodioritic intrusive body (Nemčok et al., 1994). In both Valles Marineris and the studied sites of the Tatra Mountains, the role of the tectonic fabric in the development of the

10 DSGSD features is therefore expected to be minor, although elsewhere in the Tatra Mountains a tectonic breccia level parallel to DSGSD displacement has been suspected to have influenced scarp development (Pánek et al., 2017).

In the Tatra Mountains, deglaciation was ended at ~8500 B.P. (Lindner et al., 2003), and the ages obtained for DSGSD in the Polish and Slovakian Tatras are between 15.7-4.3 ka (Pánek et al., 2017). Some DSGSD features in the Tatra Mountains started soon after local deglaciation, but the influence of climatic cycles and their geological consequences, especially in terms of

15 groundwater flow, pore pressure variations, and their implications for rock corrosion, is suspected to be major because in some instances scarp development sometimes occurred well after deglaciation. In Valles Marineris, the glacial landsystem cannot be dated with a similar accuracy, and observations (Mège and Bourgeois, 2011) are not against several or many periods of glaciations since the upper Hesperian. Martian climate instability actually favours the interpretation of many glaciation and deglaciation cycles, a response to incessant planetary obliquity variations (Laskar et al., 2004). For instance, climate

20 oscillations were shown to proceed with a rate as fast as 120,000 year per cycle in the last 10 million years (Levrard et al., 2004). Development of DSGSD features in Valles Marineris is therefore likely to have proceeded in response to a variety of processes recurrently operating over a very long history; both short-term processes such as ridge postglacial debuttressing, and long-term evolution under the influence of liquid water in a melting mountain permafrost (e.g. Noetzli and Gruber, 2009; Huggel et al., 2013).

25 DSGSD in Valles Marineris and the Tatra Mountains are probably not active anymore, being dated Hesperian to Lower Amazonian for Valles Marineris (Mège and Bourgeois, 2011) and before the Late Quaternary for the Tatras (Panek et al., 2017), therefore while comparing both regions, we are comparing finite deformation in ridges assumed to be akin to homogeneous rock masses at the first order.

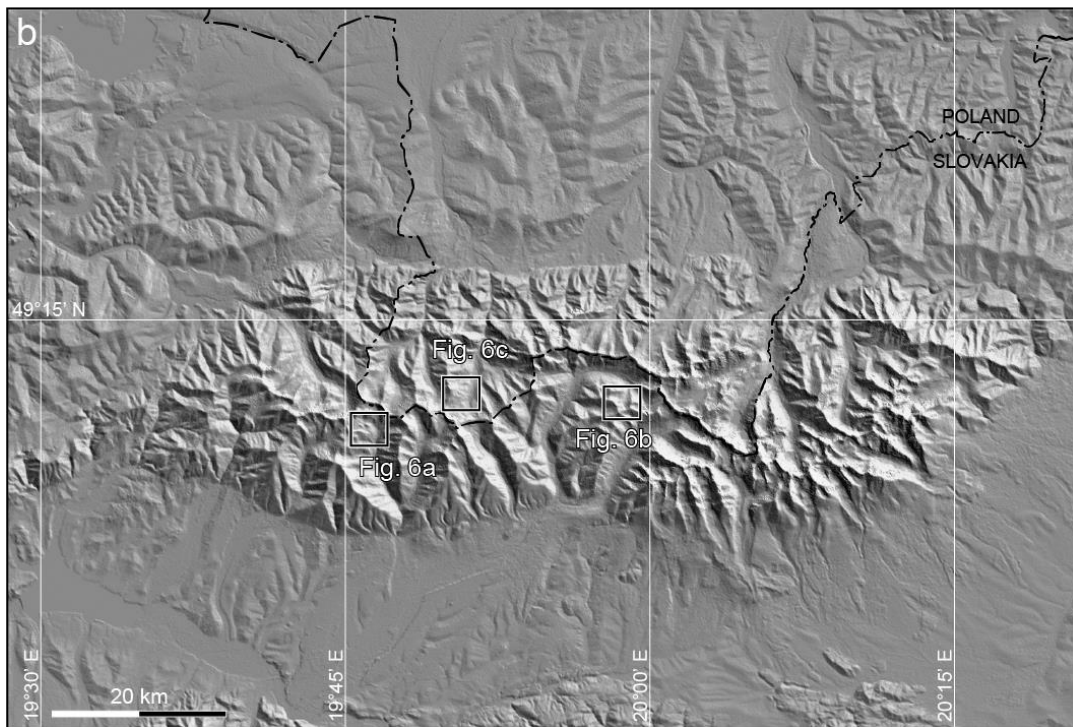


Figure 1: Location of the study sites: (a) Valles Marineris, MOLA-based shaded relief map; (b) Tatra Mountains, SRTM-based shaded relief map.

2 Data and methods

2.1 Data

The observations of the Valles Marineris trough system (Fig. 1a) reported here were done using Mars Reconnaissance Orbiter/CTX imagery as a baseline. Higher resolution images from Mars Reconnaissance Orbiter HiRISE were used for more detailed research when available. For topography, the resolution of the HRSC digital elevation model (DEM) mosaic of Valles Marineris (Gwinner et al., 2009) is too coarse for this work, whereas HiRISE DEMs would be adapted but were either not available in the study sites, or did not cover enough surface to be used. DEMs were generated from CTX stereo pairs using SocetSet®, and have the appropriate vertical precision of ca. 15 m, and were used to extract topographic profiles. Nevertheless, some DSGSD sites (including e.g. in Ius Chasma) could not be investigated due to the poor geometry of the CTX images available during the lifetime of this project, which did not make possible generation of good quality DEMs.

Elevation data in the Tatra Mountains were collected using the GPS device Garmin GPSMap 62s in differential and non-differential mode, as explained in Kromuszczyńska et al. (2016), during two field campaigns conducted in September 2012 and June 2013 in the Higher Tatra Mountains in Poland and Slovakia, and the Lower Tatra Mountains in Slovakia.

2.2 Methods

The deformation produced by DSGSD on Mars and Earth are compared by quantitative interpretation of topographic profiles. Profile generation and analysis is done with ArcGIS 3D Analyst. The topographic profiles are then analysed in a graphic software.

On the basis of the DEMs (in case of Martian study sites) and field observations (in case of terrestrial study sites), as well as the profiles themselves, the mean local ridge slopes are identified and marked. Then, the faults cutting the profiles are located and marked as two lines illustrating two mean fault dip angles, $\alpha = 60^\circ$ and $\alpha = 70^\circ$. The lower value corresponds to theoretical normal fault angles classically found in shear experiments and theory (e.g., Cloos, 1932; Anderson, 1951); the higher corresponds to normal fault angles that are commonly found in extensional tectonic regimes a few tens of metres below the surface (e.g., Gudmundsson, 1992), and could be similar to normal fault angles of DSGSD faults below the scarps. The 10° angle interval between 60° and 70° is considered as a plausible range of angular values, which cannot be retrieved from topography due to fault scarp erosion and debris accumulation. The trace of DSGSD scarps in map view both in Valles Marineris and in the Tatras sites indicate that vertical fractures play a negligible role in ridge deformation.

Fault mechanics equations do not scale with gravity, implying that similar angles are expected on Martian rocks than in terrestrial rocks. The horizontal displacement x and vertical displacement z on DSGSD fault scarps are measured as on Fig.2.

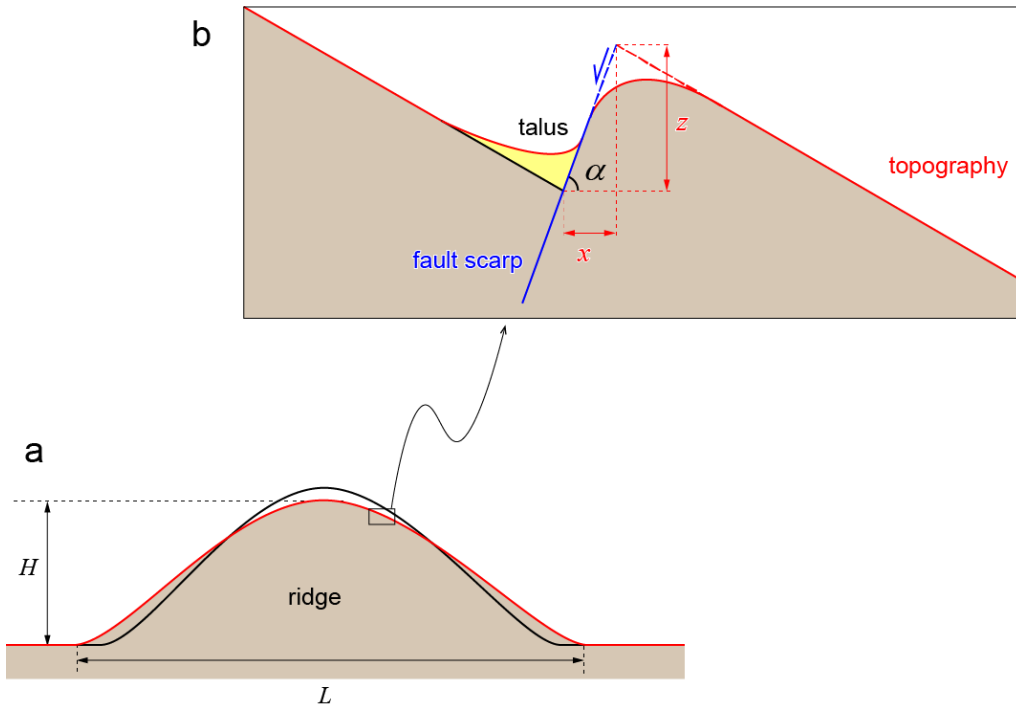


Figure 2: Parameters used for calculation of vertical and horizontal displacement across (a) topographic ridge and (b) uphill-facing normal fault scarp. The black lines indicates pre-DSGSD ridge topography and the red lines, post-DSGSD topography. H is observed ridge height, L is observed ridge width, α is fault dip angle, x is horizontal fault displacement, and z is vertical fault displacement.

- 5 The measured fault displacements are scaled in a second step. This allows to compare the scarps between the 6 study sites. The scaled horizontal displacement is calculated by dividing the average value \bar{x} of horizontal fault displacement x measured on the ridge by the width L of the ridge:

$$Dh = \bar{x}/L \quad (1)$$

- The scaled vertical displacement Dv is obtained by dividing the average value \bar{z} of vertical fault displacement z measured on the ridge by the height of the ridge H :

$$Dv = \bar{z}/H \quad (2)$$

The ratio R of ridge height H to width L , or aspect ratio, of the studied ridges allows to examine the similarity in the shape of the ridges as observed today, after DSGSD:

$$R = H/L \quad (3)$$

- 15 In order to compare the finite deformation of ridges, the maximum displacement found on each site is used, and is inferred from the maximum displacement measured along each profile:

$$\Delta x = \max(\sum_{i=1}^{n1} x_{p1}^i, \dots, \sum_{i=1}^{nN} x_{pN}^i) \quad (4)$$

and

$$\Delta z = \max(\sum_{i=1}^{n1} z_{p1}^i, \dots, \sum_{i=1}^{nN} z_{pN}^i) \quad (5)$$

where Δx is horizontal strain and Δz is vertical strain for each site, respectively, containing n scarps along a given $p1, \dots, pN$ profile. In the case of Δz , the profiles from a single ridge slope are taken into account in order to avoid vertical displacement duplication.

5 In terms of strain, the maximum strain found on each site is:

$$\varepsilon_x = \Delta x/L \quad (6)$$

and

$$\varepsilon_z = -\Delta z/H \quad (7)$$

3 Study sites

10 Three sites with clearly visible DSGSD features were selected in Valles Marineris, M1 to M3, based on DEM generation possibility, and three in the Tatra Mountains, T1 to T3 (Table 1).

Site ID	Site name	Coordinates (central point)	H (m)	L (m)	R
M1	Coprates Montes	67°54'W; 12°18'S	5 500	22 000	0.25
M2 (a)	Melas-Candor ridge	73°55'W; 8°00'S	5 000	56 000	0.08
M2 (b)	Melas-Candor ridge	73°55'W; 8°00'S	5 000	30 000	0.25
M3	Candor-Ophir ridge	73°25'W; 4°56'S	5 700	35 000	0.18
T1	Jamnícke sedlo	19°46'06"E; 49°12'02"N	250	900	0.28
T2	Velká Garajova kopa	19°58'37"E; 49°12'05"N	200	750	0.27
T3	Ornak	19°50'11"E; 49°12'33"N	420	2 200	0.19

Table 1: Ridge location and parameters in the three Valles Marineris sites and the three Tatra sites. The reason for distinguishing between 2(a) and 2(b) is given in the Section 4.

15 3.1 Valles Marineris

Study Site M1 is located in the westernmost part of Coprates Montes, in Coprates Chasma (Fig. 3a). DSGSD there takes a form of crestal graben, and uphill-facing normal fault scarps on the northern side of the ridge. The western and eastern parts of the first study site are separated by a 26 km wide landslide alcove, with a scar aligned on both sides with the scarps of

DSGSD crestal graben. Site M2 is the ridge separating Melas and Candor chasmata (Fig. 3b). Eastward, the ridge splits at the middle and lowers eastward almost down to the chasma floor, interpreted as a consequence of increased crestal extension by Mège and Bourgeois (2011), then reinterpreted as a glacial valley developed along a former crestal graben by Gourronc et al. (2014). Uphill-facing normal fault scarps developed on both ridge sides. Site M3 is a ridge located between Candor and Ophir chasmata (Fig. 3c). DSGSD features are represented by distinct crestal graben, which cause the ridge-top to split. On the slopes uphill-facing normal fault scarps are slightly visible. The global ridge parameters are given in Table 1.

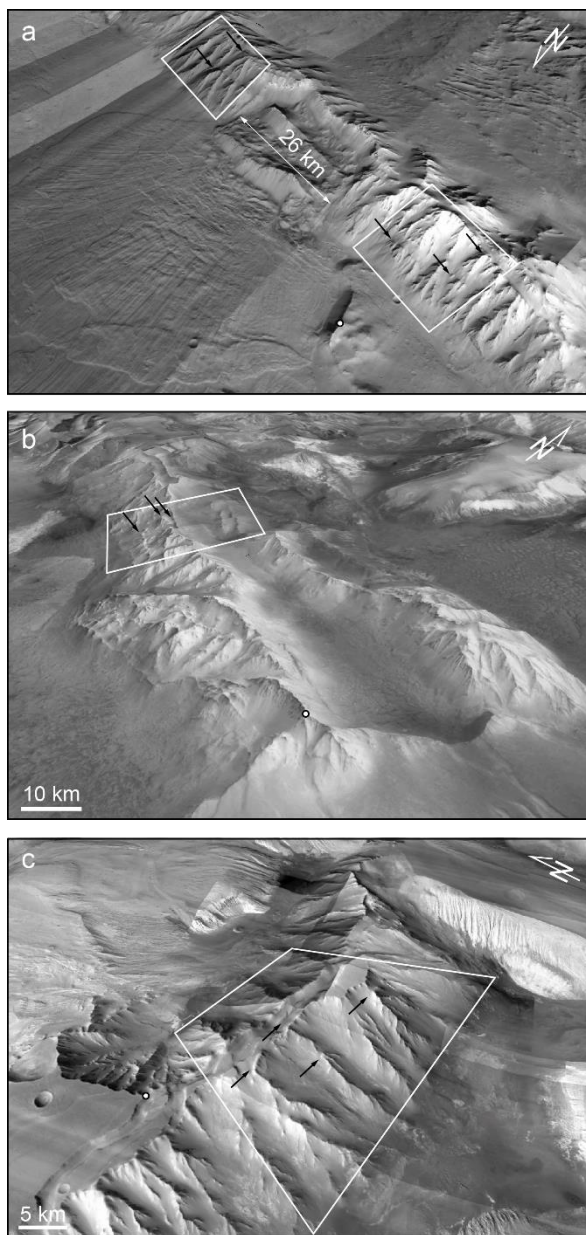


Fig. 3. Martian study sites. White dot indicates landmark for easier site localisation, with coordinates in the Mars Sphere datum. (a) Site M1: Coprates Montes. DSGSD is observed on the ridge on both sides of the landslide. Landmark is at 11°52'29.3"S, 68°19'44.1"W; (b) Site M2: Melas-Candor boundary ridge. Landmark is at 8°29'4.9"S, 72°36'25.1"W; (c) Site M3: Candor-Ophir boundary ridge. Landmark is at 4°46'33.6"S, 73°45'57.8"W. The boxes locates the areas where the profiles were measured (Fig. 6). Arrows indicate DSGSD scarps. MRO/CTX mosaic draped on Mars Express/HRSC topography.

3.2 Tatra Mountains

Sites T1 and T2 are located in the Slovakian Tatra Mountains, and Site T3 in the Polish Tatras. Site T2 (Fig. 4a) contains DSGSD features on a ridge east of Jamnícke Sedlo and Ostrý Roháč summit. A few uphill-facing normal faults scarps cut the ridge on its both slopes. The crest is wide and clearly reworked by DSGSD activity. The height of individual scarps reaches up to 5-10 m. Site T2 (Fig. 4b) is a ridge west of Veľká Garajova Kopa on the way to Veľká Kopa. In the west, DSGSD features express as uphill-facing normal fault scarps distributed over the whole slope and associated with soil creep. In the east, the crest becomes narrower, uphill-facing normal fault scarps are restricted to close to the crest, and ridge-top splitting occurs by way of fresh, 20-cm wide tension fractures. In this area, a few uphill-facing normal faults scarps cut the ridge on both sides. The crest is wide and clearly reworked by DSGSD activity. The height of the scarps reaches 5-10 m. Site T3 (Fig. 4c) includes DSGSD features on the ridge south of the Ornak summit. The ridge has a wide crest cut with a series of normal faults on both sides that generated high uphill-facing scarps. The height of the highest scarps exceeds 10 m.

4 Results

4.1 Fault displacement observed along topographic profiles

On Mars, measurements were done along 11 topographic profiles in Site M1 (Fig. 6a). In sites M2 and M3, 5 and 6 profiles were used, respectively (Fig. 6b-c). On Earth, 9 profiles were obtained in Site T1 and 13 in sites T2 and T3 (Fig. 7a-c). Profiling perpendicular to the ridges was conducted along crest lines, resulting in broken profile traces, and along straight lines. In a given site, these two methods yielded similar results. As examples, profiles following spur-and gully crest lines are provided for the sites M1 and M3. All the fault displacement measurements are provided as tables in Supplementary Material 1.

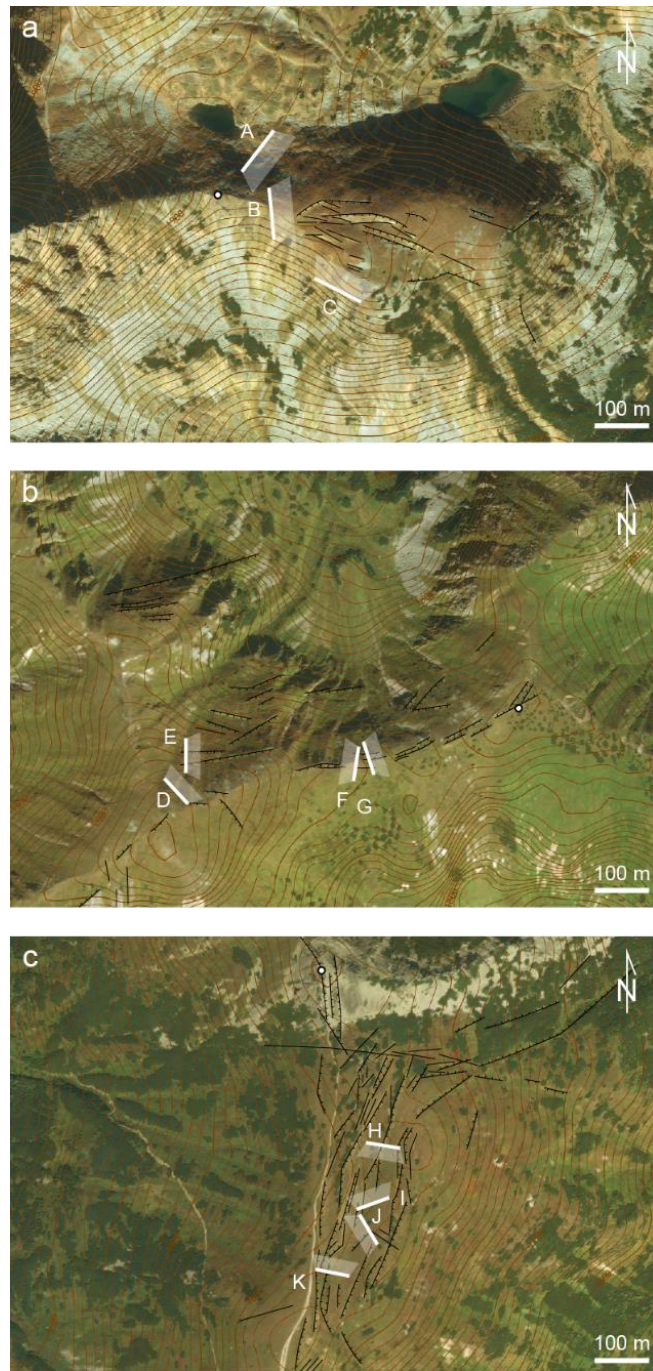


Figure 4: Tatra study sites and location of field photographs (Figure 5). Lines are fault scarps, dashes indicate the downthrown block. For better readability, or where the scarp orientation is not well defined they are not always drawn. White dot indicates landmark for easier site localisation, with coordinates using the WGS84 datum. (a) Site T1, east from Jamnicke Sedlo. Landmark is at $49^{\circ}12'04.5''N$, $19^{\circ}45'48.0''E$; (b) Site T2: a ridge west of Vel'ká Garajova Kopa. Landmark is at $49^{\circ}12'09.0''N$, $19^{\circ}58'59.0''E$; (c) Site T3: ridge south from Ornak. Landmark is at $49^{\circ}12'46.5''N$, $19^{\circ}50'08.5''E$. Imagery is from ESRI World Imagery; contours are extracted from ASTER GDEM. ASTER GDEM is a product of METI and NASA.

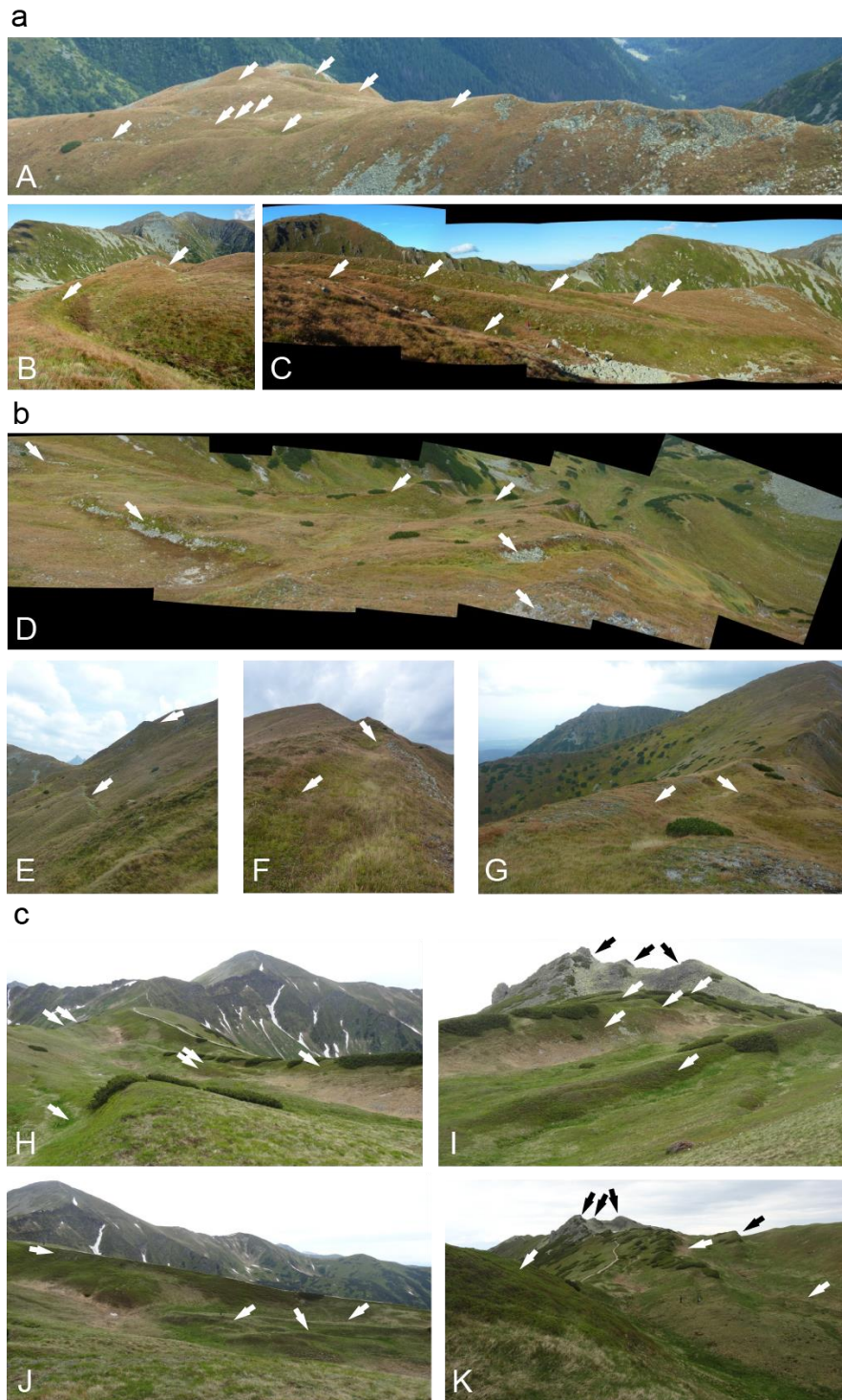


Figure 5: Field photographs of the Tatra sites (located on Figure 4): (a) Site T1; (b) Site T2; (c) Site T3. Arrows indicate some of the DSGSD scarps.

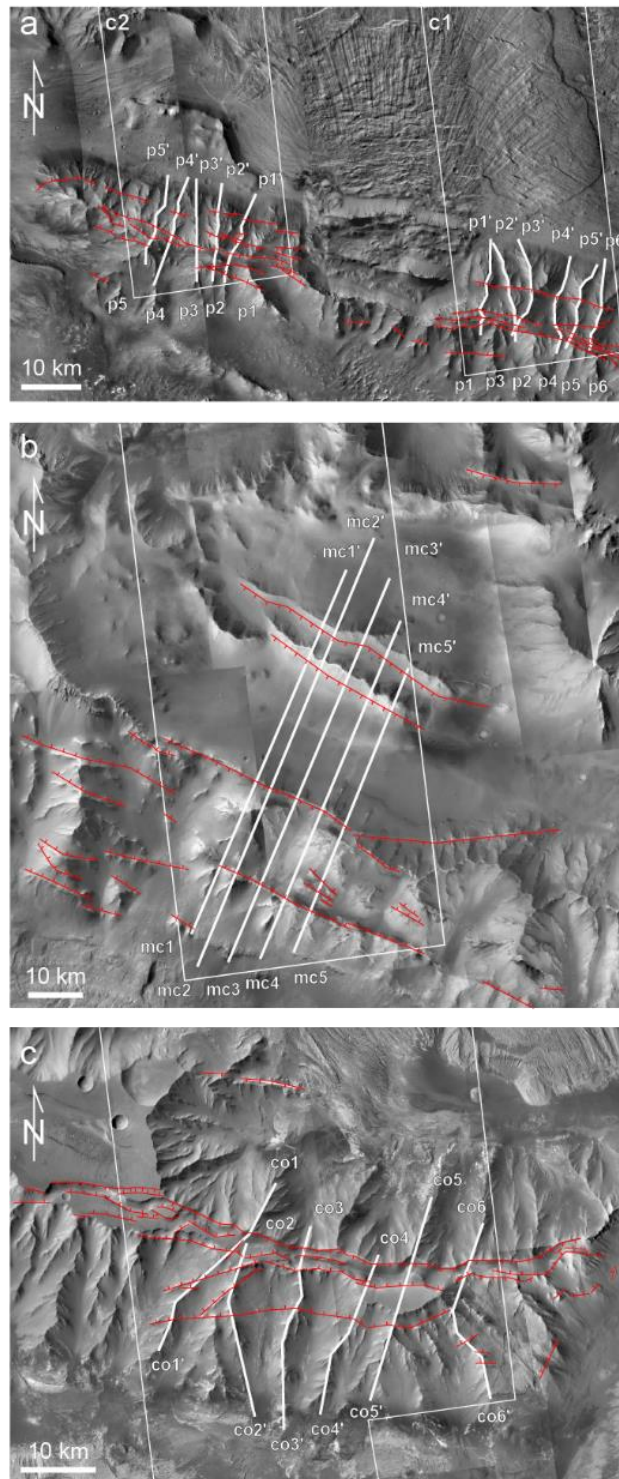


Figure 6: Martian sites, location of the analysed fault scarps (black), CTX DEM (white boxes) and profiles (numbered white lines) used for fault displacement analysis. (a) Site M1; (b) Site M2; (c) Site M3. MRO/CTX mosaics realised with JMARS.

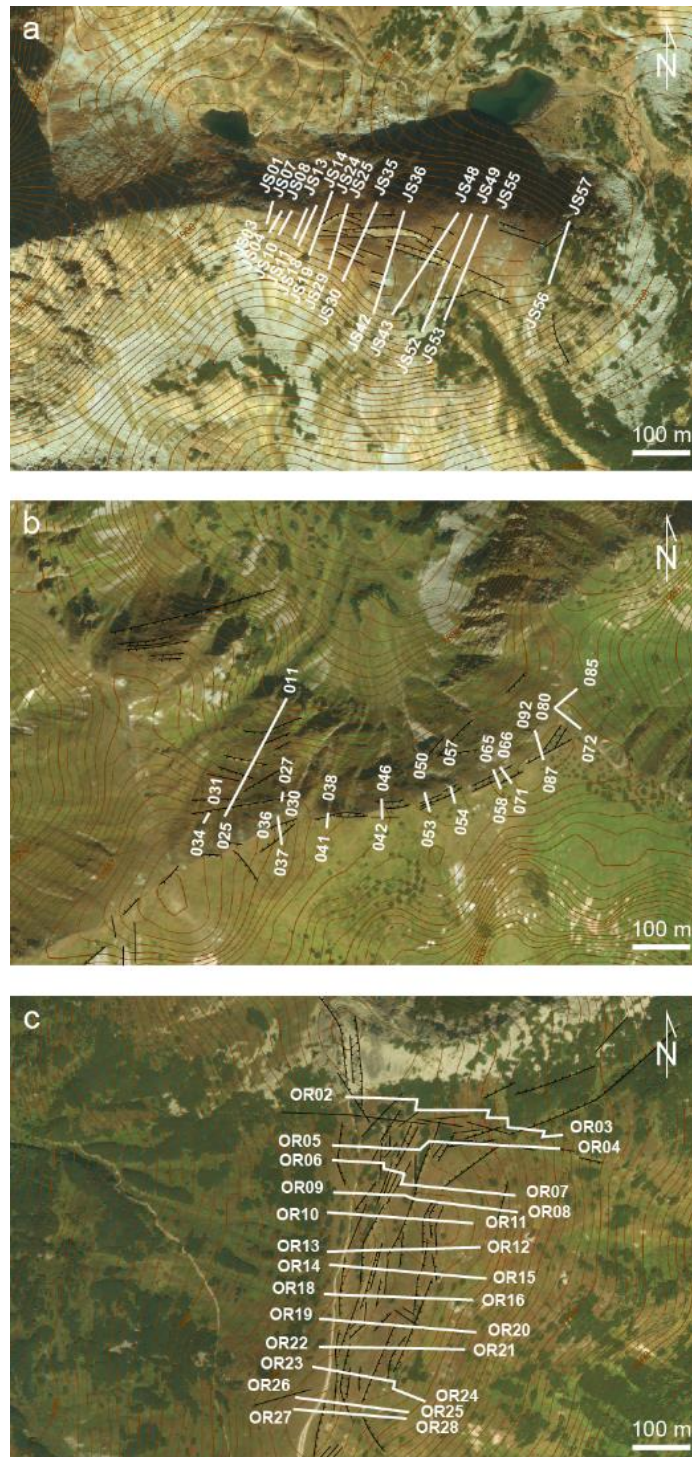
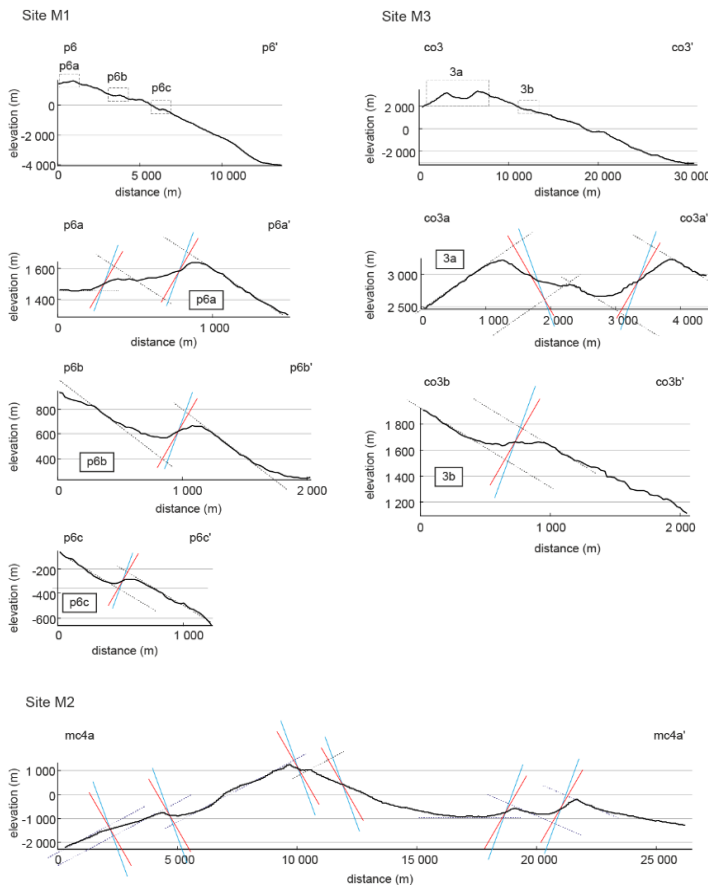


Fig. 7. Terrestrial sites, location of the profiles. (a) Site T1, across a crest line east from Jamnícke Sedlo; (b) Site T2, the ridge west from Veľká Garajova Kopa; (c) Site T3, a ridge south from Ornak. Google™ Earth; 2015 CNES/Astrium.

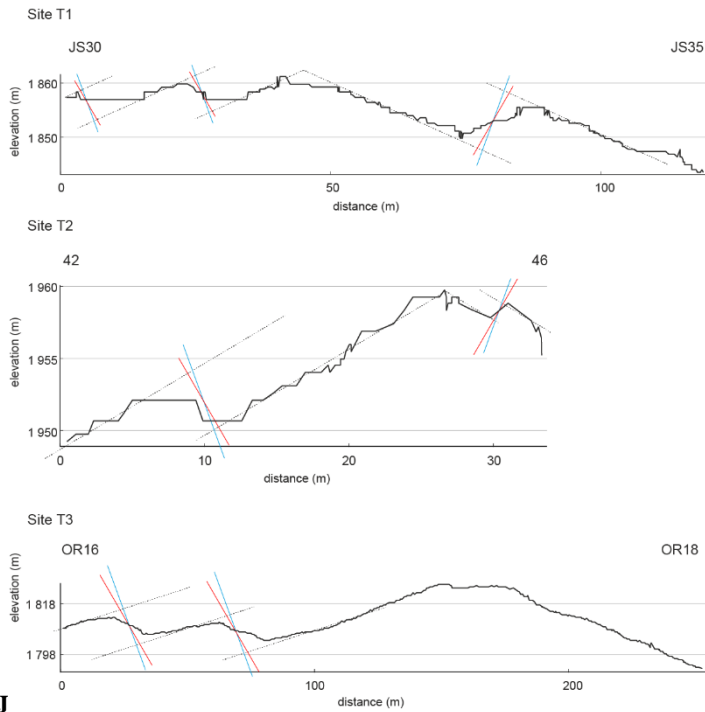
Two interpretations have been done of the central valley of Site M2, which have implications for DSGSD measurement. If it is a central graben similar to the central graben in e.g. Site M1 that underwent further extension, as interpreted by Mège and Bourgeois (2011), the valley depth is a proxy to the crestal graben height. Alternatively, if it is a glacial valley (Gourronc et al., 2014), then there is no crestal graben observed. In that case, it is likely that a crestal graben of unknown depth existed, and guided the orientation of the glacial valley before being fully ablated. For this reason, profiles for Site M2 consider two options: one with 6 normal fault scarps (consistent with Mège and Bourgeois, 2011), and one with the 3 southernmost and the northernmost scarps only (consistent with Gourronc et al., 2014). Both options represent end-members in which DSGSD in the site is maximised and minimised.

In the Tatra Mountains, the profiles were recorded along straight profiles, except in a few cases where vegetation made necessary deflection of the walking path, with a measured vertical precision of 40 cm (Kromuszczyńska et al., 2016).

Examples of interpreted profiles are given on Fig. 8. Supplementary Material 2 includes all the profiles. In sites M1 and M3, the largest displacements are found to have occurred along crestal graben faults. The mean measured displacements are reported in Table 2.



15 **Figure 8a: Reconstruction of fault traces (continuous lines) from topographic slope around fault (dotted line) measured at the three Martian study sites, assuming fault dips of 60° (red) and 70° (blue).**



J

Fig. 8b. Reconstruction (dotted lines) of fault traces (continuous lines) measured at the three Tatra study sites, assuming fault dips of 60° (red) and 70° (blue).

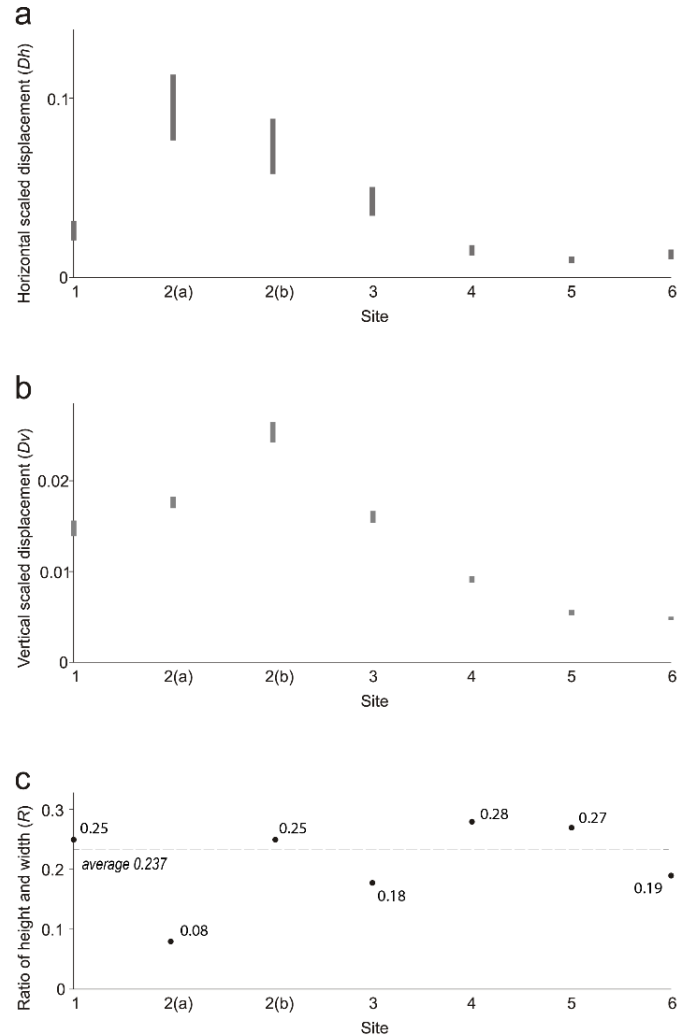
5

Site ID	\bar{x} (m)		\bar{z} (m)		Dh		Dv	
	$\alpha = 60^\circ$	$\alpha = 70^\circ$	$\alpha = 60^\circ$	$\alpha = 70^\circ$	$\alpha = 60^\circ$	$\alpha = 70^\circ$	$\alpha = 60^\circ$	$\alpha = 70^\circ$
M1	174	115	307	323	0.008	0.005	0.056	0.059
M2(a)	569	383	952	1022	0.010	0.007	0.190	0.204
M2(b)	421	289	726	794	0.008	0.006	0.158	0.173
M3	312	214	538	584	0.009	0.006	0.094	0.102
T1	4.5	3.1	7.9	8.5	0.005	0.003	0.032	0.034
T2	2.3	1.6	3.9	4.3	0.003	0.002	0.020	0.022
T3	6.5	4.4	10.3	11.1	0.003	0.002	0.025	0.026

Table 2. Mean horizontal and vertical displacements, in meters and scaled, at the six study sites. M2(a) assumes that the central valley in Site M2 is of purely DSGSD origin, whereas M2(b) assumes that the central valley has a purely glacial origin.

4.2 Fault displacement scaling with ridge dimensions

The scaled displacements are presented on Table 2 and graphically on Fig. 9. Although displacement along the fault scarps are two orders higher on Mars than on Earth, once scaled to ridge dimensions (eqs. 1 and 2), this difference becomes much less prominent (Fig. 9a-b). Dh for the Valles Marineris sites (0.005–0.010) is 2 to 2.6 times the values for the Tatra sites (0.002–0.005) only. Due to the steepness of normal faults, this difference is larger vertically, with Dv 2.6 to 5.1 larger for Valles Marineris (0.056–0.204) than for the Tatra Mountains (0.20–0.34).



10 **Figure 9: Scaled horizontal displacement Dh (a) scaled vertical displacement Dv (b), and height to width ratios R (c) in the study sites. For Site M2, two end-members fault displacement interpretations of the Melas Chasma - Candor Chasma intervening depression are given: option (a) corresponds to the fully tectonic interpretation proposed by Mège and Bourgeois (2011) and option (b) to a mixed tectonic/glacial interpretation (Gourronc et al., 2014). Dashed line in 9c indicates the average height-to-width ratio when the option (b) of site M2 is considered.**

In Site M2, Dv is much higher than in the other Valles Marineris sites, whatever the interpretation of the morphology (Fig. 9b, Site M2a or M2b). This is interpreted as a consequence of glacial abrasion of the highest part of the ridge, as discussed in Section 5.2. Dv is therefore overestimated by an unknown amount.

Why is DSGSD fault displacement on Mars of the same order as on Earth once scaled? The smaller gravity acceleration at the surface of Mars ($3.71 \text{ m}\cdot\text{s}^{-2}$) than at the surface of Earth ($9.81 \text{ m}\cdot\text{s}^{-2}$) tends to increase the stability of Martian topographic ridges compared to terrestrial ridges having similar height and slope angles (Makowska et al., 2016). Conversely, the much more voluminous ridges on Mars tend to build a higher gravitational potential, and make Martian ridges more deformable. These results show that both effects tend to compensate.

Discussion

10 5.1 Fault strain distribution

The very large fault offsets measured on individual faults in Valles Marineris require cumulated events (e.g., Fossen, 2010, p. 172–174). The gradual dominance of slip along master faults with deformation time in a given fault set, at the expense of small faults, is a consequence of fault linkage with growing deformation (Cartwright et al., 1995). Because DSGSD is observed at the surface and does not extend much deep below the base level of the deforming ridge (e.g., Makowska et al., 2016), the normal stress is small, which makes stable sliding more likely than stick-slip sliding (Marone and Scholz, 1988). Larger fault slip in Valles Marineris is therefore made possible by plastic ridge deformation over a time span longer than the deformation time of the Tatra Mountains ridges. The valley glaciers expected to have occupied Valles Marineris chasmata floors are larger than the valley glaciers in the Tatra Mountains by at least two orders (Mège and Bourgeois, 2011; Gourronc et al., 2014), ridge slope deglaciation may have taken a long time, promoting long-lasting fault slip during DSGSD. Furthermore, the chaotic orbital obliquity regime of Mars (Laskar et al. 2004) makes realistic a very large number of glaciation and deglaciation cycles in Valles Marineris throughout the history of Mars, and as many glacier advance and retreat cycles generating incremental DSGSD-induced fault displacements. In contrast, the paraglacial structures in the Tatra Mountains are not expected to be older than 400 ka (Lindner et al., 2003). Clay gouge infilling (Treiman, 2008) of possible pre-existing fractures along the ridges inherited from the formation of Valles Marineris (Schultz, 1995a; Mège and Masson, 1996a, 1996b) may have also promoted stable sliding (Fossen, 2010) under the new glacial loading conditions.

5.2 DSGSD dependency on ridge scale

The ridge aspect ratio R (eq. 3) is constant for all or most of the ridges (depending in which situation, 2a or 2b, is the Melas-Candor ridge, as discussed below). Considering that all the ridges are now inactive, it follows that in spite of the different scale, they attained a similar final stage, making R an estimate of DSGSD maturity *de facto*, with $R=0.24$ (Figure 8c) for a mature ridge. The range of R is narrow (0.18–0.29) for Earth and Mars if the glacial valley at Site M2 is fully erosional (Fig. 8c, Site M2b), as interpreted by Gourronc et al. (2014). R values are much more scattered (0.08–0.29) and unusual compared with the

two other Martian sites if the central valley in Site M2 is of DSGSD origin only (Fig. 8c, Site M2a), as interpreted by Mège and Bourgeois (2011). Here, for the following reason we favour Gourronc et al. (2014), which results in a nearly constant value of R for all the studied ridges.

5 Geomorphologic analysis of the Candor-Melas ridge shows that the erosional processes that shaped the northern side of the ridge are distinct for the processes that generates the spur-and-gully morphology on the southern side. Mège and Bourgeois (2011) found this unusual but did not succeed in interpreting it further than an advanced stage of DSGSD. The northern side of the ridge was taken as an unusual example of extreme development of DSGSD. Three years after, the same group reinterpreted the chasmata around this feature as part of a huge glacial landsystem, based on many and widespread geomorphological observations (Gourronc et al., 2014). Within the framework of a regional glacial landsystem, the northern
10 side of the Melas-Candor ridge would naturally form by glacial erosion proceeding eastwards from a narrow graben located west of the ridge crest. The graben would widen and deepen, eventually resulting in a structurally controlled U-shaped valley and abrasion and the ridge crest. Mege and Bourgeois (2001) had therefore hypothesized (2a) whereas Gourronc et al. (2014) corrected this view by proposing (2b). Interpretation (2a) is therefore still considered, although we now favour our more recent interpretation (2b).

15 An implication of favouring interpretation (2b) is that the range of the difference between scaled horizontal and scaled vertical displacements for the studied Martian and terrestrial instances, already estimated in Section 4.2 from Table 2, is refined to 1.8–2.6 for Dh and 2.9–5.1 for Dv .

An implication of the similar aspect ratio of all the profiles is that DSGSD has evolved from initial geometries that may have been different but eventually converged toward a common final and stable shape, in which the ridge aspect ratio is ~ 0.24 .

20 DSGSD therefore tends to stop to a stabilised state that is not scale dependent.

5.3 Initial ridge geometries

Analysis of the cumulated fault displacements (Table 3) can be used to retrieve information on the initial ridge geometries. The total horizontal extension (eq. 4) and vertical contraction (eq. 5) in the Tatra ridges is of the order of tens of meters, corresponding to total horizontal elongation (eq. 6) and vertical shortening (eq. 7) of 0.8 – 1.2% horizontally and 8.6 – 16%
25 vertically. In Valles Marineris, deformation is two orders larger, with total horizontal elongation 2 – 7% and vertical shortening of 21 – 52%. The proportionally larger deformation in Valles Marineris than in the Tatra, in spite of similar ridge aspect ratio, suggests that DSGSD evolved to its finite stage from an initially different aspect ratio. The collected measurements therefore supports the proposition made in Section 5.2 that the R parameter may measure ridge maturity.

Site ID	Δx (m)		Δz (m)		ε_x		ε_z	
	$\alpha = 60^\circ$	$\alpha = 70^\circ$	$\alpha = 60^\circ$	$\alpha = 70^\circ$	$\alpha = 60^\circ$	$\alpha = 70^\circ$	$\alpha = 60^\circ$	$\alpha = 70^\circ$
M1	1250	840	1740	1790	0.06	0.04	-0.32	-0.33
M2(a)	3670	2480	3980	4240	0.07	0.04	-0.80	-0.85
M2(b)	1370	940	2350	2580	0.05	0.03	-0.47	-0.52
M3	1250	840	1220	1350	0.04	0.02	-0.21	-0.24
T1	16.4	10.9	28.2	29.9	0.02	0.01	-0.11	-0.12
T2	15.6	11.5	27.2	31.4	0.02	0.02	-0.14	-0.16
T3	26	18	36	38	0.012	0.008	-0.086	-0.090

Table 3: Ridge deformation in response to DSGSD in Valles Marineris and the Tatra Mountains. Δx : cumulated horizontal ridge elongation; Δz : cumulated vertical shortening; ε_x : horizontal strain (horizontal displacement normalized to ridge width in Table 1); ε_z : vertical strain (vertical displacement normalized to ridge height), respectively. Elongation is positive and shortening is negative. 2(a) assumes that the central valley in Site 2 is of purely DSGSD origin, whereas 2(b) assumes that the central valley has a purely glacial origin. Hypothesis (b) is considered to be more likely (see Section 5.2).

Conclusion

The ridges displaying DSGSD features in Valles Marineris are larger than the ridges displaying DSGSD in the Tatra Mountains by one order. In both regions, DSGSD is thought to have come to an end. Their aspect ratio (height/width) is similar, ~ 0.24 (Table 1). However, proportionally, horizontal displacement of the Valles Marineris ridges is three times higher than at the Tatra Mountains ridges, implying that the initial slopes of the Valles Marineris ridges were higher than those of the Tatra Mountains ridges. It may be suggested that on the one hand, the maturity or immaturity (instability) of ridges affected by DSGSD may be inferred from their aspect ratio. On the other hand, this final, stabilised ridge geometry does not carry indication on the initial shape of the ridge itself, an information that may be retrieved only by collecting information from individual DSGSD scarp.

Individual fault displacements across DSGSD scarps in the Tatra Mountains are similar to fault displacement in most DSGSD sites on Earth (see references in the Supplementary Table 1 of Mège and Bourgeois, 2011), suggesting that this conclusion may be extrapolated to other regions. Nevertheless, similar analyses need to be conducted in other ridges affected by DSGSD, formed in post-glacial as well as non-postglacial conditions, both inactive and active, before general conclusions can be drawn. DSGSD in the Tatra Mountains and Valles Marineris sites studied here occurred in rocks that at the first order may be considered as initially mechanically homogeneous. Rheological contrasts such as provided by lithologic contrasts or tectonic fabric may however be critical parameters in the control of the geometry of a ridge subject to DSGSD (e.g., Makowska et al., 2016), and its evolution. The conclusions drawn here will probably be modified if the ridge structure departs too much from the homogeneous rock mass assumed here.

Basal ridge deformation in response to gravitational spreading of the upper part of the ridge was not explicitly considered in this work. Its characterisation is usually complicated by the incision and accumulation processes that commonly affect basal slopes. Basal deformation is however implicitly included in the ridge aspect ratio.

Fault displacement homothety implies that fault growth in both regions may not have been similar. Fault growth in the Tatra is consistent with single seismic events (yet to be formally identified in the field) for each scarp, whereas many events are required to explain the large offsets measured across the Valles Marineris DSGSD fault scarps. Fault reactivation may have occurred as a geologic response to the long succession of glacial/interglacial cycles expected to have occurred throughout the history of Valles Marineris (Laskar et al., 2004; Mège and Bourgeois, 2011; Gourronc et al., 2014). In summary, although currently of globally similar geometry, the ridges affected by DSGSD in Valles Marineris and in the selected sites of the Tatra Mountains did not have the same initial conditions, nor is their structural evolution similar.

Supplementary material

- 10 Supplementary Material 1: Fault scarp measurement data for the six study sites.
Supplementary Material 2: Extensive set of topographic profiles for the six study sites.

Acknowledgements

This work has been financially supported by the Foundation for Polish Science, project FNP TEAM/2011-7/9 “Mars: another planet to approach geoscience issues” and the OPUS/V-MACS project no. 2015/17/B/ST10/03426 of the National Science Centre, Poland. ASTER GDEM is a product of METI and NASA. Both reviewers are thanked for help in methodological clarification and identifying many places where details could be improved.

References

- Ambrosi, C., and Crosta, G. B.: Large sacking along major tectonic features in the Central Italian Alps, *Eng. Geol.*, 83, 183–200, 2006.
- 20 Anderson, E. M.: *The dynamics of faulting and dyke formation with applications to Britain*, Oliver and Boyd, Edinburgh, 1951.
- Andrews-Hanna, J. C.: The formation of Valles Marineris: 1. Tectonic architecture and the relative role of extension and subsidence. *J. Geophys. Res.*, 117, E03006, doi: 10.1029/2011JE003953, 2012.
- Angelier, J. and Colletta, B.: Tension fractures and extensional tectonics, *Nature*, 301, 4951, 1983.
- 25 Bachmann, D., Bouissou, S., and Chemenda, A.: Analysis of massif fracturing during deep-seated gravitational slope deformation by physical and numerical modeling, *Geomorphology*, 103, 130–135.
- Ballantyne, C. K.: Paraglacial geomorphology, *Quaternary Science Reviews* 21, 19352017, doi: 10.1016/S0277-3791(02)00005-7, 2002.

- Beck, A. C.: Gravity faulting as a mechanism of topographic adjustment, *N. Z. J. Geol. Geophys.*, 11, 191–199, 1968.
- Beget, J. E.: Tephrochronology of antislope scarps on an alpine ridge near Glacier Peak, Washington, U.S.A., *Arctic Alpine Res.*, 17, 143–152, 1985.
- Beyer, R. A. and McEwen, A. S.: Layering stratigraphy of eastern Coprates and northern Capri Chasmata, Mars. *Icarus*, 179, 1–23, 2005.
- Blasius, K. R., Cutts, J. A., Guest, J. E. and Masursky, H.: Geology of the Valles Marineris: First Analysis of Imaging From the Viking 1 Orbiter Primary Mission, *J. Geophys. Res.*, 82(28), 4067, 1977.
- Borykov, T., Mège, D., Mangeney, A., Richard, P., Gurgurewicz, J., and Lucas, A., Investigation of frictional weakening of Martian and terrestrial landslides using discrete element simulations, submitted to *Landslides*, March 6, 2018.
- Cartwright, J. A., Trudgill, B. D., and Mansfield, C.: Fault growth by segment linkage: An explanation for scatter in maximum displacement and trace length data from the Canyonlands Grabens of SE Utah, *J. Struct. Geol.*, 17, 1319–1326, 1995.
- Chigira, M.: Long-term gravitational deformation of rocks by mass rock creep, *Eng. Geol.*, 32, 157–184, 1992.
- Chojnacki, M., McEwen, A. S., Dundas, C., Ojha, L., Urso, A., and Sutton, S., Geologic context of recurring slope lineae in Melas and Coprates Chasmata, Mars, *J. Geophys. Res.: Planets*, doi:10.1002/2015JE004991, 2016.
- Cloos, E.: Feather joints as indicators of the direction of movements on faults, thrusts, joints and magmatic contacts, *Proc. Nat. Acad. Sci.*, 18, 387, 1932.
- Corti, G.: Evolution and characteristics of continental rifting: Analog modeling-inspired view and comparison with examples from the East African Rift System, *Tectonophysics*, 522–523, 1–33, 2012.
- Cull, S., McGuire, P., Gross, C., Myers, J., and Shmorhun, N.: A new type of jarosite deposit on Mars: Evidence for past glaciation in Valles Marineris? *Geology*, 42(11), 959–962, 2014.
- Daly, R. A., Miller, W. G., and Rice, G. S.: Report of the Commission appointed to investigate Turtle Mountain, Frank, Alberta, 1911, Canada Department of Mines Memoir 27, 34 p., 1912.
- Dębniak, K., Mège, D., and Gurgurewicz, J., Geomorphology of Ius Chasma, Valles Marineris, Mars, *J. Maps*, 13(2), 260–269, 2017.
- Discenza, M. E., Esposito, C., Martino, S., Petitta, M., Prestininzi, A., and Scarascia Mugnozza, G.: The gravitational slope deformation of Mt. Rocchetta ridge (central Apennine, Italy): geological-evolutionary model and numerical analysis, *Bull. Eng. Geol. Environ.*, doi:10.1007/s10064-010-0342-7, 2011.
- Farin, M., Mangeney, A., and Roche, O.: Fundamental changes of granular flow dynamics, deposition, and erosion processes at high slope angles: Insights from laboratory experiments, *J. Geophys. Res.: Earth Surface*, 10.1002/2013JF002750, 2014.
- Fossen, H.: *Structural geology*, Cambridge Univ. Press, 463 p., 2010.
- Frey, H.: Martian canyons and African rifts: structural comparisons and implications. *Icarus*, 37, 142–155, 1979.
- Gourronc, M., Bourgeois, O., Mège, D., Pochat, S., Bultel, B., Massé, M., Le Deit, L., Le Mouélic, S., and Mercier, D.: One million cubic kilometers of fossil ice in Valles

- Marineris: relicts of a 3.5 Gy old glacial landsystem along the Martian equator, *Geomorphology*, 204, 235-255, doi: 10.1016/j.geomorph.2013.08.009, 2014.
- Gudmundsson, A.: Formation and growth of normal faults at the divergent plate boundary in Iceland, *Terra Nova*, 4, 464–471, doi: 10.1111/j.1365-3121.1992.tb00582.x, 1992.
- 5 Guerricchio, A., and Melidoro, G., 1979: Deformazioni gravitative profonde del tipo “sacking” nei monti di Maratea (Lucania), *Geol. Appl. Idrgeol.*, 14(1), 13–22, 1979.
- Gwinner, K., Scholten, F., Spiegel, M., Schmidt, R., Giese, B., Oberst, J., Heipke, C., Jaumann, R., and Neukum, G.: Derivation and validation of high-resolution digital terrain models from Mars Express HRSC data, *Photogramm. Eng. Remote Sens.*, 75, 1127–1142, 2009.
- 10 Hippolyte, J.-C., Brocard, G., Tardy, M., Nicoud, G., Bourlès, D., Braucher, R., Ménard, G., and Souffaché, B.: The recent fault scarps of the western Alps (France): tectonic surface ruptures or gravitational sacking scarps? A combined mapping, geomorphic, levelling, and ¹⁰Be dating approach, *Tectonophysics*, 418, 255–276, doi:10.1016/j.tecto.2006.02.009, 2006.
- Hoek, E.: Strength of jointed rock masses, *Géotechnique*, 23, 187–223, 1983. Howard, A. D.: Miniature analog of spur-and-gully landforms in Valles Marineris, *Rep. Planetary Geology and Geophysics Program, NASA TM 4130*, 355-357, 1989.
- 15 Huggel, C., Salzmann, N., and Allen, S.: High-mountain slope failures and recent and future warn extreme events, In: *Climate Forcing of Geological Hazards*, McGuire, B., and Maslin, M. (eds.), John Wiley & Sons, 195–222, 2013.
- Hürlimann, M., Ledesma, A., Corominas, J., and Prat, P. C.: The deep-seated slope deformation at Encampadana, Andorra: representation of morphologic features by numerical modelling, *Eng. Geol.*, 83, 343–357 2006.
- Jahn, A.: Slope morphological features resulting from gravitation, *Z. Geomorph.*, Suppl 5, 59–72, 1964.
- 20 Johnson, B. C., and Campbell, C. S.: Drop height and volume control the mobility of long-runout landslides on the Earth and Mars, *Geophys. Res. Lett.*, 44, 12,091–12,097, 2017.
- Kelfoun, K. and Druitt, T. H.: Numerical modelling of the emplacement of Socompa rock avalanche, Chile, *J. Geophys. Res.*, 110, B12202, doi:10.1029/2005JB003758, 2005.
- Kromuszczyńska, O., Mège, D., Lucas, A., and Gurgurewicz, J.: Giant sacking in Valles Marineris. 43rd Lunar Planet. Sci. Conf., Houston, TX, Abstract 1161, 2012.
- 25 Kromuszczyńska, O., Mège, D., Castaldo, L., Gurgurewicz, J., Makowska, M., Dębniak, K. and Jelinek, R.: Evaluation of the EGNOS service for topographic profiling in field geomorphology, *Geomorphology*, 268, 253-265, doi: 10.1016/j.geomorph.2016.05.026, 2016.
- Laskar, J., Correia, A. C. M., Gastineau, M., Joutel, F., Levrard, B. and Robutel, P.: Long term evolution and chaotic diffusion of the insolation quantities of Mars, *Icarus* 170(2), 343364, doi: 10.1016/j.icarus.2004.04.005, 2004.
- 30 Levrard, B., Forget, F., Mountmessin, F., and Laskar, J.: Recent ice-rich deposits formed at high latitudes on Mars by sublimation of unstable equatorial ice during low obliquity, *Nature*, 431, 1072-1075, 2004.
- Lindner, L., Dzierżek, J., Marciniak, B., and Nitychoruk, J.: Outline of Quaternary glaciations in the Tatra Mts: their development, age and limits, *Geol. Quart.*, 47, 269–280, 2003.

- Lucchitta, B. K.: Morphology of chasma walls, Mars, *J. Res. U.S. Geological Survey*, 6, 5, 651–662, 1978.
- Lucchitta, B. K., McEwen, A. S., Clow, G. D., Geissler, P. E., Singer, R. B., Schultz, R. A. and Squyres, S. W.: The canyon system on Mars, In: Mars, Kieffer, H. H., Jakosky, B. M., Snyder, C. W. and Matthews, M. S. (eds.), 453–492, University of Arizona Press, Tucson, 1992.
- 5 Mahr, T.: Deep-reaching gravitational deformations of high mountain slopes, *Bull. Int. Assoc. Eng. Geol.*, 16, 121–127, 1977.
- Makowska, M., Mège, D., Gueydan, F. and Chéry, J.: Mechanical conditions and modes of paraglacial deep-seated gravitational spreading in Valles Marineris, Mars, *Geomorphology*, 268, 246–252, doi: 10.1016/j.geomorph.2016.06.011, 2016.
- Marone, C. and Scholz, C. H.: The depth of seismic faulting and the upper transition from stable to unstable slip regimes, *Geophys. Res. Lett.*, 15, 621–624, 1988.
- 10 Masson, P.: Structure pattern analysis of the Noctis Labyrinthus-Valles Marineris regions of Mars, *Icarus*, 30, 49–62, 1977.
- McEwen, A. S.: Mobility of large rock avalanches: evidence from Valles Marineris, Mars, *Geology*, 17, 1111–1114, 1989.
- McEwen, A. S., Malin, M. C., Carr, M. H., and Hartmann, W. K.: Voluminous volcanism on early Mars revealed in Valles Marineris, *Nature*, 397, 584–586, 1999.
- 15 Mège, D. and Bourgeois, O.: Equatorial glaciations on Mars revealed by gravitational collapse of Valles Marineris wallslopes, *Earth Planet. Sci. Lett.*, 310, 182–191, doi: 10.1016/j.epsl.2011.08.030, 2011.
- Mège, D. and Masson, P.: A plume tectonics model for the Tharsis province, Mars, *Planet. Space Sci.*, 44, 1499–1546, 1996a.
- Mège, D. and Masson, P.: Amounts of stretching in Valles Marineris, Mars, *Planet. Space Sci.*, 44, 749–782, 1996b.
- Mège, D., Cook, A. C., Lagabrielle, Y., Garel, E., and Cormier, M.-H.: Volcanic rifting at Martian grabens, *J. Geophys. Res.: Planets*, 108 (E5), 5044, doi:10.1029/2002JE001852, 2003.
- 20 Mège, D., Le Deit, L., Rango, T., and Korme, T.: Gravity tectonics of topographic ridges: halokinesis and gravitational spreading in the western Ogaden, Ethiopia, *Geomorphology*, 193, 113, doi:10.1016/j.geomorph.2013.03.018, 2013.
- Mège, D., Bourgeois, O., and Gurgurewicz, J.: Origin of the northern Valles Marineris trough: tectonics and subglacial erosion, *Lunar Planet. Sci. Conf., Abs.* 1110, 2017.
- 25 Nemčok, A.: Gravitational slope deformation in high mountains. *Proc. 24th Int. Geol. Congr.*, 13, 132–141, 1972.
- Nemčok, J., Bezák, V., Biely, A., Gorek, A., Gross, P., Halouzka, R., Janák, M., Kahan, Š., Kotański, Z., Lefeld, J., Mello J., Reichwalder, P., Raczkowski, W., Roniewicz, P., Ryka, W., Wiczorek, J., Zelman J.: Geological map of the Tatra Mountains, MŽP SR, GÚDŠ, Bratislava, 1994.
- Noetzli, J. and Gruber, S.: Transient thermal effects in Alpine permafrost, *Cryosph.*, 3, 85–99, 2009.
- 30 Pánek, T., Mentlik, P., Engel, Z., Braucher, R., Zondervan, A., and Aster Team: Late Quaternary sackungen in the highest mountains of the Carpathians, *Quat. Sci. Rev.*, 159, 47–62, 2017.
- Patton, P. C.: Evolution of the spur and gully topography on the Valles Marineris wall scarps, *NASA Tech. Memo.* 84211, 324–325, 1981.

- Peulvast, J.-P., Mège, D., Chiciak, J., Costard, F., and Masson, P. L.: Morphology, evolution and tectonics of Valles Marineris wallslopes (Mars), *Geomorphology*, 37, 329–352, 2001.
- Quantin, C., Allemand, P., Mangold, N., Dromard, G., and Delacourt, C.: Fluvial and lacustrine activity on layered deposits in Melas Chasma, Valles Marineris, Mars, *J. Geophys. Res.: Planets*, 110, E12S19, doi:10.1029/2005JE002440, 2005.
- 5 Radbruch-Hall, D. H., Varnes, D. J., and Savage, W. Z.: Gravitational spreading of steep-sided ridges ("sackungen") in western United States, *Int. Assoc. Eng. Geol. Bull.*, 14, 28–35, 1976.
- Savage, W. Z., and Varnes, D. J.: Mechanics of gravitational spreading of steep-sided ridges ("sacking"), *Bull. Int. Assoc. Eng. Geol.*, 35, 31–36, 1987.
- Reitner, J., Lang, M., and van Husen, D.: Deformation of high slopes in different rocks after würmian deglaciation in the
10 Gailtal (Austria), *Quaternary Int.*, 18, 43–51, 1993.
- Roatsch, L. H., Mustard, J. F., Swayze, G., Milliken, R. E., Bishop, J. L., Murchie, S. L., and Lichtenberg, K.: Hydrated mineral stratigraphy of Ius Chasma, Valles Marineris, *Icarus*, 206, 253–268, 2010.
- Schultz, R. A.: Structural development of Coprates Chasma and Western Ophir Planum, Valles Marineris Rift, Mars. *J. Geophys. Res.*, 96 (E5), 22777–22792, doi: 10.1029/91JE02556, 1991.
- 15 Schultz, R. A.: Gradients in extension and strain at Valles Marineris, Mars, *Planet. Space Sci.*, 43, 1561–1566, 1995a.
- Schultz, R. A.: Limits on strength and deformation properties of jointed basaltic rock masses, *Rock Mech. Rock Eng.*, 28(1), 1–15, 1995b.
- Schultz, R. A.: Multiple-process origin of Valles Marineris basins and trough, Mars, *Planet. Space Sci.*, 46(6/7), 827–834, 1998.
- 20 Sharp, R. P.: Mars: Troughed terrain, *J. Geophys. Res.*, 78 (20), 4063–4072, 1973.
- Shreve, R. L.: Blackhawk landslide, southwestern San Bernardino County, California, *Geol. Soc. Am. Centennial field Guide, Cordilleran section*, 109–114, 1987.
- Sosio, R., Crosta, G. B., and Hungr, O.: Complete dynamic modeling calibration for the Thurwieser rock avalanche (Italian Central Alps), *Eng. Geol.*, 100, 11–26, 2008.
- 25 Treiman A. H., Fault-trace ridges, Valles Marineris, Mars: Evidence for large-scale fault controlled paleo-groundwater flow, *Nature Geosci.*, 1, doi:10.1038/ngeo131, 2008.
- Williams, J. P., Paige, D. A., and Manning, C. E., Layering in the wall rock of Valles Marineris: intrusive and extrusive magmatism. *Geophys. Res. Lett.*, 30(12), 1623, doi:10.1029/2003GL017662, 2003.