

Detection and Explanation of Spatiotemporal Patterns in Late Cenozoic Palaeoclimate Change Relevant to Earth Surface Processes

Sebastian G. Mutz¹, Todd A. Ehlers¹

5 ¹ Department of Geosciences, University Tübingen, D-72074 Tübingen, Germany

Correspondence to: Sebastian G. Mutz (sebastian.mutz@uni-tuebingen.de)

Abstract

Detecting and explaining differences between palaeoclimates can provide valuable insights for Earth scientists investigating processes that are affected by climate change over geologic time. In this study, we describe and explain spatiotemporal patterns in palaeoclimate change that are relevant to Earth surface scientists. We apply a combination of multivariate cluster- and discriminant analysis techniques to a set of consistently set-up high-resolution palaeoclimate simulations conducted with the ECHAM5 climate model. A pre-industrial (PI) climate simulation serves as the control experiment, which is compared to a suite of simulations of Late Cenozoic climates, namely a Mid-Holocene (MH, ca. 6.5 ka), Last Glacial Maximum (LGM, ca. 21 ka) and Pliocene (PLIO, ca. 3 Ma) climate. For each of the study regions (Western South America, Europe, Himalaya-Tibet and South Alaska), differences in climate are subjected to geographical clustering to identify dominant modes of climate change and their spatial extent for each time slice comparison (PI-MH, PI-LGM and PI-PLIO). The selection of climate variables for the cluster analysis is made on the basis of their relevance to Earth surface processes and includes 2m air temperature, 2m air temperature amplitude, consecutive freezing days, freeze-thaw days, maximum precipitation, consecutive wet days, consecutive dry days, zonal wind speed and meridional wind speed. We then apply a two-class multivariate discriminant analysis to simulation pairs PI-MH, PI-LGM and PI-PLIO to evaluate and explain the discriminability between climates within each of the anomaly clusters. Changes in ice cover create the most distinct and stable patterns of climate change, and create the best discriminability between climates in western Patagonia. The distinct nature of European palaeoclimates is statistically explained mostly by changes in 2m air temperature (MH, LGM, PLIO), consecutive freezing days (LGM) and consecutive wet days (PLIO). These factors typically contribute 30%-50%, 10%-40% and 10%-30% respectively to climate discriminability. Finally, our results identify regions particularly prone to changes in precipitation-induced erosion and temperature-dependent physical weathering.

30

Keywords: Cenozoic climate, climate change, ECHAM5, Last Glacial Maximum, Mid-Holocene, Pliocene, discriminant analysis, discriminability, Earth surface processes, erosion

1. Introduction

35 In the study of Earth surface processes, gaining new quantitative understanding of the atmosphere's interaction with the Earth's surface through erosional processes is limited by the difficulty of establishing reliable palaeoclimatic context for erosion rate histories. Such context is particularly useful when erosion rates are calculated using techniques such as cosmogenic radionuclides and low-temperature thermochronology [e.g. Schaller et al., 2002; Bookhagen et al., 2005; Moon et al., 2011; Insel et al., 2010; Stock et al., 2009], which

40 integrate over timescales of 10^3 - 10^6 years. Despite recognition of the influence of climate on tectonic processes
and landscape evolution through erosion [e.g. Whipple et al., 1999; Montgomery et al., 2001; Willett et al.,
2006; Whipple, 2009; Deal et al., 2018], erosion rates calculated from geo- and thermochronological archives
are often interpreted under the assumption of modern climate due to insufficient palaeoclimate data [e.g. Starke
et al., 2017]. While proxy-based palaeoclimate reconstructions, or reconstructions of climate-controlled
45 variables such as river discharge [e.g. Wickert, 2016], are in some cases able to provide sufficient and plausible
context for specific problems, GCM's (general circulation models) offer a complementary and integrative
approach to palaeoclimate reconstructions. GCM's complement proxy-based reconstructions in several ways:
(1) GCM's have a global coverage [e.g. Salzmann et al., 2011; Haywood et al., 2013; Jeffrey et al., 2013] and
therefore provide palaeoclimatological context in regions with sparse proxy records; (2) GCM-based
50 palaeoclimate reconstructions allow the refinement of local proxy-based reconstructions by providing regional
means and a broader climatic context; (3) GCM's are able to offer insight into atmospheric drivers of
reconstructed local palaeoclimates, because they simulate atmospheric processes based on our physical
understanding of the climate system. (4) GCM's allow the conduction of sensitivity experiments to investigate
the relationship between climatic drivers and local observations [e.g. Takahashi and Battisti, 2007].
55 The Paleoclimate Modelling Intercomparison Project (PMIP) coordinates palaeoclimate modelling efforts
[Kageyama et al. 2018] and provides experiment designs for the Mid-Holocene and the Last Interglacial [Otto-
Bliesner et al., 2017], the last millennium [Jungclaus et al., 2017], the Last Glacial Maximum [Kageyama et al.,
2017], and the Pliocene Warm Period [Haywood et al., 2016.], which is part of the Pliocene Model
Intercomparison Project (PlioMIP). Despite consistent forcings, experiments carried out with different GCM's
60 and model resolutions yield different results due to GCM specific parameterisation. [Mutz et al., 2018]
conducted PMIP-style palaeoclimate experiments with the same GCM (ECHAM5) and resolution, which
removes the GCM parameterisation related signal in the differences between simulated palaeoclimates. This
experiment framework comprises climate simulations for the pre-industrial (PI, reference year 1850), Mid-
Holocene (MH, ~ 6ka), Last Glacial Maximum (LGM, ~ 21ka) and Pliocene (PLIO, ~ 3Ma).
65 This study takes advantage of the Mutz et al. [2018] simulation framework and quantifies differences between
simulated palaeoclimates with regard to variables relevant to Earth surface processes (e.g., rainfall
characteristics, temperature derived quantities, wind speed and direction) in order to allow more refined
interpretations of potential climatic drivers for changing rates in Earth surface processes. For more effective
communication of our methods and results, we separate the PI control simulation from MH, LGM and PLIO in
70 discussion by referring only to the latter three as Late Cenozoic climates. These are time periods over which
reconstructed erosion rates typically integrate. Understanding how different these palaeoclimates are from a pre-
industrial climate with regard to variables that potentially affect erosion rates is essential in any comprehensive
and merited interpretation of erosion rates, and ultimately allows for better assessment of the influence of
climatic and tectonic controls on erosion. Three questions are addressed in this study:
75 1. What are the spatial patterns of climate change in comparisons of pre-industrial with Late Cenozoic time
periods?
2. How different were Late Cenozoic palaeoclimates to the pre-industrial climate with regard to variables
relevant to Earth surface processes?
3. What constitutes these quantified differences between pre-industrial and Late Cenozoic climates?

80 We focus on 4 regions that are frequently investigated with regard to erosion histories: South Alaska, Western
South America, Himalaya-Tibet and Europe. The first question is addressed by conducting a cluster analyses on
the differences between pre-industrial and Late Cenozoic palaeoclimates, which subdivides the 4 study regions
into geographical clusters governed by a distinct character of erosion relevant climate change. Whereas Mutz et
al. [2018] apply a similar cluster analysis to describe the modes of climate variability in each palaeoclimate
85 simulation, the results of this study consist of maps showing the extent of a particular mode of climate change,
and thus provides an overview of climate change over time. The resulting clusters also serve as suitable masks
for values used in the discriminant analyses. Questions 2 and 3 are addressed by conducting discriminant
analyses on subdivisions of the 4 study areas, which are objectively pre-defined by the aforementioned cluster
analyses. The results provide a quantitative assessment and explanation of differences in climate with regard to
90 variables relevant to Earth-surface processes. The third question is answered by conducting a cluster analyses on
the differences between pre-industrial and Late Cenozoic palaeoclimates, which yields the extent of regions
governed by a distinct character of erosion relevant climate change.

The overarching goal is to provide the Earth surface science community with an ~~overview and~~ quantitative
assessment and explanation of how climate changed in the Late Cenozoic with regard to variables relevant to
95 Earth-surface processes. However, the same methods may also be applied to simulations of modern and future
climates to detect and explain patterns of climate change that may result in shifts of Earth surface process
regimes.

2. Data and Methods

100 This section describes the **data basis**, methods and processing steps. In summary, we apply a cluster analysis that
identifies where surface-process-relevant aspects of climate change are likely, and a discriminant analysis that
quantifies and explains these changes within the regions identified by clustering. This combination of clustering
and discrimination of climate model simulation results yields 5 different sets of results (Fig. 1): Anomaly maps
for a set of climate variables (in the supplemental material to this manuscript), multivariate anomaly cluster
105 maps and anomaly cluster characterisations (section 2.2), discrimination scores and a measure of relative
contribution by each climate variable to discriminability (section 2.3). While the individual components of the
processing chain (Fig. 1) are based on well-established methods, the processing set-up and the particular
combination of these methods is tailored to address this study's specific scientific problems.

110 2.1 ECHAM5 simulations

General Circulation Models (GCM's) simulate global climate based on our physical understanding of
atmospheric processes and are primarily used to investigate atmospheric dynamics and contemporary climate
change, but have also been applied to improve our understanding of past climates and Earth system dynamics
[e.g. Kutzbach et al., 1993; Ehlers and Poulsen, 2009; Maroon et al., 2015, 2016, Mutz et al., 2016, 2018].
115 GCM's have become well established tools in geoscience, as is reflected by the work of the Palaeoclimate
Modelling Intercomparison Project (PMIP) [Kageyama et al. 2018, Bracannot et al., 2012], which adds
palaeoclimate related contributions to the Coupled Model Intercomparison Project (CMIP). Palaeoclimate
studies address a range of different time scales including the last millenium [e.g. Jungclaus et al., 2010], orbital
[e.g. Gong et al., 2013; Lohmann et al., 2013; Pfeiffer and Lohmann, 2016; Wei and Lohmann, 2012; Zhang et

120 al., 2014] and tectonic time scales [e.g. Knorr et al., 2011; Stepanek and Lohmann, 2012]. Comparisons between
palaeoclimate simulations of different time periods are often complicated by use of different models and
inconsistencies in model setup. GCM specific parameterisations and differences in horizontal and vertical
resolution introduce differences between simulations that are not a result of prescribed forcings.
Mutz et al. [2018] conducted a suite of GCM simulations conducted with the same GCM (ECHAM5) and
125 resolution to circumvent the above-mentioned biases. This GCM simulation framework comprises
palaeoclimate experiments for pre-industrial times (reference year 1850), the Mid-Holocene (ca. 6.5 ka), the
Last Glacial Maximum (ca. 21 ka) and the Pliocene (ca. 3Ma) climates. The experiments were conducted at a
spectral resolution of T159 (ca. 80km x 80km), with 31 vertical levels and an output frequency of 1 day. The
simulations are based on boundary conditions from coupled AOGCM transient simulations and
130 paleoenvironmental reconstruction initiatives such as PMIP3 [Abe-Ouchi et al 2015], GLAMAP [Sarnthein et
al. 2003], CLIMAP [CLIMAP project members, 1981], PRISM [Haywood et al., 2010; Sohl et al., 2009;
Dowsett et al., 2010] and BIOME6000 [Prentice et al., 2000; Harrison et al., 2001; Bigelow et al., 2003; Pickett
et al., 2004]. For detailed description of model setups, we refer the reader to Mutz et. al [2018] and references
therein. The high resolution and model consistency across all these time slices has not been achieved previously
135 in the palaeoclimate modelling community. These GCM experiments therefore represent a unique, state-of-the-
art simulation framework suited for investigations of changes in climate controlled processes across the Late
Cenozoic. The GCM (ECHAM5) is a well-established model in the climate community, and simulated
palaeoclimates are in agreement with other modelling and proxy-based reconstruction efforts. Mutz et al. [2018]
use a present-day simulation to establish confidence in the model, and compare palaeoclimate estimates to
140 compilations of proxy-based reconstructions for MH and LGM precipitation over South America and Tibet,
revealing an overall satisfactory performance of the GCM. The latitudinal gradients and magnitude of difference
in temperature and precipitation are in good agreement with results of previous palaeoclimate modelling efforts.
We refer the reader to Mutz et al. [2018] for a detailed comparison to other palaeoclimate simulations and
proxy-based reconstructions.

145

2.2 Clustering – Multivariate Anomaly Maps

This study's investigation of differences focusses on 4 regions, which (a) are of interest to the Earth-surface-
and palaeo-altimetry communities, and (b) are feasible to work on given the GCM's limitations [cf. Mutz et al.,
2018]: South Alaska (52°–68°N, 125°–165°W), Western South America (5°–56°S, 60°–80°W), Europe (26°–
150 65°N, 22°W–66°E) and Hiamaya-Tibet (0°–60°N, 40°–120°E). Climate change within each of the investigated
region is neither spatially homogenous, nor is it the same in magnitude everywhere [Mutz et al., 2018]. In the
example of PI–LGM climate change in Europe, southern Norway experiences a strong increase in consecutive
freezing days and strong decrease in 2m air temperature, while continental Europe experiences only mild
cooling, but strong increases in intra-monthly 2m air temperature variability. We refer to these combinations of
155 changing climate attributes as *modes of (climate) change* in this manuscript. Each of the regions is governed by
a number of these distinct modes of climate change. These intra-regional discrepancies merit an informed and
objective subdivision of each region into geographical subdomains governed by one of these modes of change
prior to the investigation of differences in climate through time. Geographical clustering allows such
subdivisions on the basis of similarities in climate change at different locations within each region. It assesses

160 climate change for each grid box, calculates its similarity to climate change in other grid boxes, and groups them accordingly. More specifically, it allows the grouping of elements (i), in this case climate model surface grid boxes, by the co-variability of anomalies of selected climatic element attributes. For each region, the contained elements are subjected to agglomerative hierarchical clustering, followed by k-means clustering corrections [Mutz et al., 2016; Paeth, 2004] to address the inherent shortcomings of a pure hierarchical approach. The
165 Mahalanobis distance [e.g. Wilks, 2011] is used as a measure of similarity (of climate change) between clusters in the entire procedure. Readers are referred to Mutz et al. [2018] for a more detailed description of the procedure and aforementioned shortcomings.

The clustering is conducted on basis of the same climatic attributes as the discrimination between climates through time (section 2.3). In total, M ($= 9$) element attributes, summarised in table 1, are chosen based on (1)
170 their relevance to Earth surface processes, (2) their adequate representation by the GCM, and (3) the feasibility of construction from GCM output: near-surface air temperature (te2m), intra-monthly near-surface air temperature amplitude (t2am), consecutive freezing days (csfd), freeze-thaw days (fthd), maximum precipitation (pmax), consecutive wet days (cswd), consecutive dry days (csdd), zonal near-surface wind speeds (u10) and meridional near-surface wind speeds (v10).

175 For calculation of consecutive freezing days and freeze-thaw days, a surface temperature of 0°C is taken as a threshold value. The maximum duration of a wet period, i.e. precipitation exceeding 1mm/day [Zolina et al., 2010; Zhang et al., 2011] constitutes the cswd attribute. Inversely, the maximum duration of a dry period, i.e. precipitation failing to exceed the 1mm/day threshold [Zin and Jemain, 2010] constitutes the csdd attribute.
180 These attribute variables are constructed from each palaeoclimate (MH, LGM and PLIO) and reference simulation (PI) output. The climate attribute anomalies, which serve as a basis for the clustering, are then calculated for time slice comparisons PI-MH, PI-LGM and PI-PLIO.

Clustering requires an a priori decision on the number of clusters (k) or subdivisions per region. The optimal value of k is not known before clustering. Therefore, k is varied in our experiments, and the cut off point for the
185 parameter is set once the increase in k no longer results in a cluster with distinct climatic character, but instead results in a weakened or strengthened character of an already existing cluster. Since optimal k can be expected to roughly scale with region size, the parameter is varied from 3-5 for South Alaska and from 5-8 for the larger regions. The results consist of optimal geographical subdivisions (climate clusters C_1 - C_k) with distinct climatic characters, which are described by mean vectors for climate attribute anomalies. Every cluster characterising
190 vector has a length of M . For each of the time slice comparisons and clusters, the discriminability and relative contribution to it by each of the M attribute variables is quantified in the procedure described in section 2.3.

2.3 Discrimination – Quantifying and Explaining Anomalies

The multivariate linear discriminant analysis (LMD) [e.g. Wilks, 2011] is a statistical tool that allows the
195 investigation and explanation of differences between two or more groups with regard to multiple attribute variables. More specifically, it quantifies the discriminability of the groups and the contribution of each of the attribute variables to this discriminability. The resulting discrimination model can be applied to objectively categorise an element with unknown group-affiliation. In this study, the time periods (PI, LGM, MH and PLIO) are used as groups, and the aforementioned climate variables relevant to Earth surface processes are chosen as

200 group attributes. Since the focus of this study lies on the assessment of the differences between two specific time periods with regard to multiple climate variables, the problem is treated as a two-group multivariate case.

The centre piece of the analysis lies in finding a discriminant function that best separates the two groups (or paleo-climate time slices). This is carried out for each comparison, i.e. each pair of paleo-climate time slices. This discriminant function can be expressed as a linear combination of the climate attribute variables:

$$Y = v_0 + v_1X_1 + v_2X_2 + \dots + v_mX_m + \dots + v_MX_M \quad (1)$$

205

where Y is the discriminant function, X_m ($m=1 \dots M$) are the climate variables used to assess the differences in paleo-climates, v_m ($m=1 \dots M$) are the discriminant coefficients associated with each variable. v_0 is a constant (the y-intercept) that is of no relevance to the goodness of separation and will therefore no longer be mentioned. In this case, $M=9$ (te2m, t2am, csfd, fthd, pmax, cswd, csdd, u10, v10). Each climate variable X_m (cf. table 1) contains elements x_{mn} ($n=1 \dots N$), where N is the number of elements in each cluster. Each element (or grid box) is associated with a discriminant value y_n described by:

210

$$y_n = v_1x_{1n} + v_2x_{2n} + \dots + v_mx_{mn} + \dots + v_Mx_{Mn} \quad (2)$$

In other words, the elements y_n ($n=1 \dots N$) are projected onto the discriminant axis Y. The problem of finding a discriminant function that best separates the two groups (or paleo-climates) can therefore also be seen as the process of finding an axis on which the frequency distributions of the projected elements y_n for the two groups show the smallest overlap. Since overlap is a function of distance between groups (**D**) as well as the scatter within them (**S**), the difference between these frequency distributions is described by the distance between the two group centroids (i.e. the group means of the projected elements y_n on the discriminant axis) and the scatter within the group (i.e. sum of squared deviations from the means). This distance, i.e. the discriminant criterion Γ , is maximised in order to find the best discriminant function Y and corresponding discriminant coefficients v_m ($m=1 \dots M$). The problem in the two-group multivariate case of this study can thus be summarised as:

215

220

$$\Gamma = \frac{\text{scatter between groups}(D)}{\text{scatter within groups}(S)} = \frac{(\overline{y_{T1}} - \overline{y_{T2}})^2}{\sum_{j=1}^{n_{T1}} (y_{T1j} - \overline{y_{T1}})^2 + \sum_{j=1}^{n_{T2}} (y_{T2j} - \overline{y_{T2}})^2} \rightarrow \text{max!} \quad (3)$$

Γ is the discriminant criterion, T1 and T2 are the two groups (e.g. PI and LGM in the case of time slice comparison PI-LGM) and n_{T1} and n_{T2} are the number of elements in T1 and T2. We can express the discriminant function as a matrix calculation

225

$$\mathbf{y} = \mathbf{v}_0 + \mathbf{v}\mathbf{X}, \quad (4)$$

where

$$\mathbf{y} = \begin{bmatrix} y_1 \\ y_2 \\ \dots \\ y_N \end{bmatrix} \mathbf{v}_0 = \begin{bmatrix} v_0 \\ \dots \\ v_0 \end{bmatrix} \mathbf{v} = \begin{bmatrix} v_1 \\ v_2 \\ \dots \\ v_M \end{bmatrix} \mathbf{X} = \begin{bmatrix} X_{11}X_{12} \dots X_{1M} \\ X_{21}X_{22} \dots X_{2M} \\ \vdots \\ X_{N1}X_{N2} \dots X_{NM} \end{bmatrix}, \quad (5)$$

and solve the above-mentioned optimisation problem via partial derivatives with respect to the discriminant coefficients (ω) [e.g. Wilks, 2011]. The discriminant coefficients are then standardised, i.e. put in relation to the standard deviations of respective variables, to yield ρ . The relative contribution (ρ) of each of the M attribute variables to discriminability is calculated as:

$$\rho_m = \frac{\omega_m}{M} \quad (6)$$

Finally, the skill of the resulting discrimination model is evaluated. For this, the association of each element to groups T1 (PI) or T2 (MH, LGM or PLIO) is forgotten, and the elements are re-categorised according to the critical discriminant values of the models [e.g. Bahrenberg et al., 1992]. The fraction of correct classifications (the **score**) is calculated and used as a measure of “goodness of separation” given by the models. The described LMD procedure is applied to each time slice comparison T1-T2 (namely PI-MH, PI-LGM and PI-PLIO) and each of the k climate anomaly clusters (C_1, C_2, \dots, C_k) in the 4 study regions. Each calculation yields two variables suitable for addressing the problems treated in this study: 1) a measure for **goodness of discriminability (score)** and 2) a measure for the **relative contribution (ρ)** of each of the M attribute variables to discriminability. A maximum score of 1 indicates perfect separation of all values, whereas a score of 0 indicates that the discrimination model has no explanatory power at all. Attribute variables associated with a ρ value of 1 are solely responsible for the discrimination, whereas those associated with a ρ value of 0 contribute nothing to the discriminability between climates.

2.4 Example Problem

In summary, the clustering of anomalies (section 2.2) reveals geographical clusters (or subdivisions in each of the study regions), in which similar climate change occurs, and describes the mode of climate change in each of these clusters. The LMD (section 2.3) then quantifies the discriminability of climates in these clusters and explains it with the climatic attribute variables. The set of results for each time slice comparisons and region therefore consists of 4 components: 1) *Anomaly (Cluster) Maps* that show the spatial extent of dominant modes of climate change; 2) *Anomaly Cluster Characterisation* that consists of mean vectors of climate change within each cluster and describe the mode of climate change experienced in the grid boxes assigned to the same cluster; 3) *Discrimination Scores* that describe the goodness of discriminability of climates within each of the anomaly clusters; and 4) *Relative Variable Contribution*, which describes the contribution of each of the climatic attribute variables to the discriminability calculated for each of the anomaly clusters. How these sets of results may be used in answering questions pertaining to climate driven Earth surface processes is demonstrated in the simplified example below.

Erosion rates were calculated, for example by means of cosmogenic nuclides, for a region in a specific area of interest circled on the map (Fig. 2). Although they are taken as modern (time T1) erosion rates, the signal integrates over ten-thousand years and includes erosion rates at time T2. In order to find out if and how significantly erosion rates may actually have been different at time T2, Fig. 2 is consulted.

The anomaly cluster map shows the large-scale spatial patterns of changes in climatic variables relevant to Earth surface processes. Each cluster is associated with a specific mode of climate change, and all locations that fall within it experience this type of climate change. The area of interest lies in cluster C1, so all information not

related to C1 and the area of interest are shaded pale grey to remove distractions. The purple-green raster plots reveal the type of climate change associated with C1 and thus with circled area of interest: T2 had a little more rainfall, a lot more (consecutive) wet days, higher temperatures, fewer freezing days and fewer (consecutive) dry days. Does the climate of T2 have a distinct enough signature to tell it apart from T1? The score is reasonably high, which reveals that the climate of T2 does indeed have a distinct signature and consequently, it suggests a good possibility for a different erosional regime or erosive intensity. **In order** to assess the consequences of the mode of climate change in C1 for erosion, the circles are examined. Those explain which anomaly of which variable is responsible for the distinct signature that has been detected and described above. They indicate that ca. 60% of this “discriminability” can be explained by increases in temperature and ca. 40% by increases in consecutive wet days. Consequently, it is reasonable to assume a priori that erosive processes controlled by these parameters may be affected significantly. The specific sensitivity of conditions and processes at the Earth’s surface, e.g. vegetation or critical thresholds in landscape responses, cannot be taken into consideration in these results due to the highly variable nature of it. However, the exact magnitude of those significant (and insignificant) changes are listed in supplemental table T1 to allow the reader to assess the specifics of the impact of climate on processes of the specific area and problem at hand. The above example provides the basic concepts needed to understand the remaining figures in this manuscript.

3. Results

This section contains descriptions of results from the cluster- and discriminant analyses carried out for each of the time slice comparisons and study regions. It is divided into sections for the three major study regions: 3.1 Western South America, 3.2 Europe, and 3.3 Himalaya-Tibet. For brevity, the results for South Alaska are included in the supplemental material (S10). For each subsection, regional results for time slice comparisons PI-MH, PI-LGM and PI-PLIO are presented. The figures accompanying each of those consists of four elements (cf. Section 2.4): 1) The first element to the figures are multivariate anomaly maps that were created by clustering the differences between climatic attribute variables in each of these comparisons (cf. Section 2.2) and show the resulting geographical subdivision into clusters governed by a specific mode of climate change. 2) The second element to the figures is (purple and green) raster plots showing the characterisation of those clusters. They describe the mode of change, i.e. the magnitude and direction of changes observed on average in each of the clusters. For visual clarity, the magnitude of change is scaled by the maximum absolute difference in each region and time slice comparison. Numerical values are listed in tabular format in the supplementary material to this manuscript (T1). 3) The third (grey) element consists of the scores for each cluster. These are based on a discriminant analysis carried out for the cluster (cf. Section 2.3) and describe the goodness of discriminability of the palaeoclimates in comparison to the PI control simulation. 4) The fourth and final element to the figures consists of a measure for the relative contribution (ρ) of each of the 9 climate variables (table 1) to the overall discriminability between two time slices in each geographical cluster. This element is displayed as a layer of circles on top of element 2 and reveals how much an anomaly of a specific variable (represented by a specific shade of purple or green) contributes to the discriminability between PI and a palaeoclimate in each of the clusters. Larger circle diameters correspond to greater contributions.

For brevity, results for these time slice comparisons PI-MH, PI-LGM and PI-PLIO are simply referred to as results for MH, LGM and PLIO respectively. The notation MH-C_i, LGM-C_i and PLIO-C_i is used to refer to

results for the i^{th} geographical subdivision (or cluster) in the respective set of results. Description of changes in climate are implicitly discussed in the context of the control simulation and are therefore descriptions of deviations from the PI climate. Discussions of multivariate anomaly maps and cluster characterisation (elements 1 and 2) focus mostly on the stable and persistent patterns seen in the results, i.e. geographical clusters that are least sensitive to changes in k and keep their distinct character. Discussions of scores and relative contribution to discriminability (ρ) focus primarily on clusters with good discriminability. Additional information on climate change on a sub-cluster scale are given in the form of single-variable anomaly maps in the supplementary material to this manuscript (S1-S9).

315

3.1 Western South America

Large scale patterns and modes of climate change

In western South America, the dominant modes of change for the MH are captured in clusters MH-C₃, MH-C₄, MH-C₅ and MH-C₆ (Fig. 3 a,d). MH-C₃ covers much of central Patagonia and is characterised by decreases in consecutive freeze-thaw days and increases in consecutive freezing days and consecutive wet days. MH-C₄ is the mode of change observed in most of Argentina and the central and southern Andes. It consists of relatively small increases in consecutive wet days and freeze-thaw days. MH-C₅ covers most of the tropics in the region and is characterised by decreases in consecutive wet days and maximum precipitation, and relatively small increases in 2m air temperature and consecutive dry days. Relatively large increases in 2m air temperature and consecutive dry days, and decreases in maximum precipitation and consecutive wet days constitute the mode of change for MH-C₆, which extends over low-altitude subtropics in the region.

LGM-C₁ – LGM-C₃ share a number of characteristics. These modes of changes include decreases and 2m air temperature and increases in 2m air temperature amplitude and consecutive freezing days (Fig. 3 e). Furthermore, the region occupied by LGM-C₁ – LGM-C₃ is covered by ice in the LGM. Differences between these modes of changes include a large increase in maximum precipitation in LGM-C₁ and decreases in consecutive wet days in LGM-C₂. LGM-C₄, covering much of the subtropics in the region, is characterised by relatively little change in all of the investigated variables. LGM-C₅ covers much of eastern Argentina and experiences increases in 2m air temperature amplitude. LGM-C₆ covers much of the tropics of the region and is characterised primarily by decreases in maximum precipitation and consecutive wet days.

The dominant modes of change in the PLIO are described by PLIO-C₁, PLIO-C₂, PLIO-C₃ and PLIO-C₅ (Fig. 3 f). Covering much of eastern Argentina and parts of the central Andes, PLIO-C₁ is characterised primarily by relatively large decreases in consecutive dry days and increases in maximum precipitation and consecutive wet days. The grid boxes assigned to PLIO-C₂, extending over most of the low-altitude tropics and subtropics and the Atacama desert, experience very little change on average. For grid boxes assigned to PLIO-C₃, a decrease in maximum precipitation and consecutive wet days, and increase in consecutive dry days and meridional wind speeds can be observed. PLIO-C₅ extends over much of the central and southern Andes and is characterised by decreases in freeze-thaw days and increases in 2m air temperature and meridional wind speeds. While PLIO-C₆ experiences some of the largest changes, it only covers the Northern and Southern Patagonian Ice Fields and coincides with the reduction of the ice cover in the PLIO simulation.

345

Discriminability

The discrimination scores (Fig. 3 d,e,f) are highest for the LGM and lowest for the MH, and changes in temperature, consecutive freezing days, maximum precipitation and consecutive dry days are factors that explain much of the discriminability overall. LGM-C₁ – LGM-C₃ s have the highest scores. In all 3 clusters, decreases in 2m air temperature are one of the primary contributors to the discriminability between LGM and PI climate. It explains 40%-50% of the discriminability in LGM-C₁ and 30%-40% in LGM-C₂ and LGM-C₃. With 20%-30% explained discriminability in LGM-C₁ and 30%-40% explained discriminability in LGM-C₃, increases in consecutive freezing days are a second important factor for discriminability between the climates in western Patagonia. Discrimination with PLIO and PI simulations yields the highest scores for PLIO-C₆, which covers the Patagonian Ice Fields, and PLIO-C₅. Increases in 2m air temperatures and decreases in consecutive wet days and consecutive dry days explain the discriminability in PLIO-C₆ in equal parts (20%-30%). An increase in temperatures and relatively small decrease in consecutive freezing days explain 20%-30% and 40%-50% of the discriminability in PLIO-C₅ respectively.

360

3.2 Europe

Large scale patterns and modes of climate change

MH-C₁ covers Spain and the region east of the Caspian sea (Fig. 4 a) and is associated with the least change in climate attribute variables. MH-C₂, covering areas in western Europe, western Russia and the Mediterranean coasts (Fig. 4 a), experiences an increase in maximum precipitation (Fig. 4 d). Ukraine, Poland, much of the Baltic Sea coast and southern Scandinavia are assigned to MH-C₃ and experience decreases in freeze-thaw days. MH-C₄ and MH-C₅ primarily cover northern Africa and are characterised by increases in 2m air temperature and maximum precipitation.

370 LGM-C₁–LGM-C₄ (Fig. 4 b) are all partially characterised by a decrease in 2m air temperature and freeze-thaw days, and increases in consecutive freezing days (Fig. 4 e). It should be noted that grid boxes assigned to these clusters are covered by the Fennoscandian and British Ice Sheets in the LGM simulation. LGM-C₅ extends over much of the Mediterranean region, Spain and European North Russia and characterised by increases in 2m air temperature amplitude, consecutive dry days and relatively small increases in freeze-thaw days and decreases in maximum precipitation and consecutive wet days. Most of central Europe, western Asia and North Africa is assigned to cluster LGM-C₆ and experiences the least change.

The dominant modes of change in the PLIO are captured in PLIO-C₃–PLIO-C₆ (Fig. 4 c). PLIO-C₃ is a mode of change mostly seen in parts of North Africa and characterised by increases in meridional and zonal wind speeds (Fig. 4 f). In the coastal regions north of it, very little change is seen in the PLIO (PLIO-C₄). PLIO-C₅ covers much of central Europe and experiences decreases in freeze-thaw days and 2m air temperature amplitude, and relatively small increases in 2m air temperature. European Russia and parts of Scandinavia are assigned to PLIO-C₆ and experience increases in freeze-thaw days and 2m air temperature, and decreases in consecutive dry days and 2m air temperature amplitude. PLIO-C₇ is mostly distributed along parts of the Mediterranean, Black Sea and Caspian Sea coasts and characterised by increases in consecutive dry days and 2m air temperature, and a decrease in freeze-thaw days. PLIO-C₈ covers southeastern Norway and the Alps and is characterised by

385

decreases in consecutive freezing days and 2m air temperature amplitude, and increases in 2m air temperature and freeze-thaw days.

Discriminability

390 In all time slice comparisons, changes in 2m air temperature explains most of the discriminability in many of the geographical clusters (Fig. 4 d,e,f). Changes in consecutive freezing days and consecutive wet days are also major contributors to discriminability in the LGM and PLIO respectively. LGM-C₁, LGM-C₂, LGM-C₅ and LGM-C₆ are associated with the highest scores for the LGM. 20%-24% of the discriminability in the clusters can be explained by decreases in temperature, and a similar amount can be explained by increases in consecutive freezing days. Although all PLIO scores are high, the PLIO cluster in central Europe (PLIO-C₅) is associated with the highest value. The discriminability in the cluster can be explained by increases in 2m air temperature (30%-40%), increases in consecutive wet days (20%-30%), decreases in consecutive dry days (10-20%) and decreases in temperature amplitude (10-20%). Discriminability in the high-altitude cluster (PLIO-C₈) can be explained by increases in consecutive dry days (10-20%) and decreases in consecutive wet days (20-30%), maximum precipitation (20-30%) and temperature amplitude (10-20%).

3.3 Himalaya-Tibet

Large scale patterns and modes of climate change

405 The stable patterns for the MH results include MH-C₁ covering the region south of the Himalayan orogen, MH-C₂ covering central India and Southeast Asia, MH-C₄ in the region around the Caspian sea, and MH-C₅ north of the Caspian and Aral Sea (Fig. 5 a). MH-C₁ is characterised by increases in consecutive wet days and maximum precipitation and decreases in consecutive dry days and 2m air temperature (Fig. 5 d). MH-C₂ mostly experiences changes in meridional and zonal wind speeds. MH-C₄ is characterised by increases in 2m air temperature amplitude and consecutive freezing days and decreases in freeze-thaw days. MH-C₅ grid boxes are associated with relatively large increases in freeze-thaw days and smaller increases in consecutive freezing days and 2m air temperature amplitude.

LGM-C₁ mostly covers the northernmost parts of the region and the Himalayan orogen (Fig. 5 b). The changes associated with it are decreases in 2m air temperature and increases in 2m air temperature amplitude and consecutive dry days (Fig. 5 e). The modes of change described by LGM-C₂ and LGM-C₃ govern large parts of the region, including the Arabian Peninsula, Iran, central Asia, the Tibetan Plateau and Tarim Basin, Mongolia and parts of China. These regions experience relatively small decreases in temperature. Central India and eastern Southeast Asia (LGM-C₄) are associated with decreases in consecutive wet days, maximum precipitation and zonal wind speeds, and increases in consecutive dry days. Parts of Kazakhstan, southern Russia, China, southeast Asia and northern India are assigned to LGM-C₅, which is characterised by increases in consecutive dry days.

The region covered by PLIO-C₁ includes northern India along the Himalayan orogen (Fig. 5 c) and experiences decreases in consecutive dry days and increases in consecutive wet days and maximum precipitation (Fig. 5 f). PLIO-C₂ covers most of the study region and is associated with relatively little change in all climatic attributes except meridional wind speeds. Central Asia is mostly assigned to PLIO-C₃ and experiences an increase in 2m

air temperature and decrease in freeze-thaw days. The north of the study region (PLIO-C₄) is characterised by decreases in 2m air temperature amplitude and consecutive freezing days and increases in 2m air temperature and freeze-thaw days. Finally, PLIO-C₅ mostly covers the high altitude locations of the Himalaya-Tibet region that are close to steep topographic gradients, including the Himalayan orogen. This cluster is associated with
430 decreases in wind speeds, consecutive freezing days, consecutive wet days and 2m air temperature, and with increases in consecutive dry days and 2m air temperature.

Discriminability

The significance of the climate attributes in explaining the discriminability the Himalaya-Tibet clusters (Fig. 5
435 d,e,f) is more variable than in Europe. While changes in 2m air temperature are important in most of the MH and LGM results, there is no clear dominant factor for PLIO clusters. In the LGM, the discriminability in the high-altitude/high latitude cluster (LGM-C₁) is mostly explained by decreases in 2m air temperature (30%-40%), mild increases in consecutive freezing days (20-30%) and mild decreases in consecutive wet days (10%-20%). LGM-C₄ has the second highest discrimination score, and the discrimination in this cluster is explained
440 by decreases in consecutive dry days (10%-20%) and increases in consecutive wet days (10%-20%), maximum precipitation (30%-40%) and 2m air temperature (20%-30%). For PLIO, the type of climate change governing the largest cluster (PLIO-C₂) causes discriminability that is primarily explained by mild decreases in consecutive freezing days (20%-30%) and mild increases in consecutive wet days (20%-30%) and 2m air temperature amplitude (10%-20%). Discriminability in the cluster occupying the region south of the Himalayan
445 orogen (PLIO-C₁) is explained by decreases in consecutive dry days (10%-20%) and 2m air temperature (10%-20%), and increases in consecutive wet days (10%-20%), maximum precipitation (30%-40%) and consecutive freezing days (10%-20%). Cluster PLIO-C₅ is associated with a discriminability best explained by increases in consecutive dry days (30%-40%) and decreases in maximum precipitation (10%-20%) and consecutive freezing days (20%-30%).

450

4. Discussion

This section describes method-related features and problems, and highlights commonly occurring patterns of change, provides possible explanations for those, and discusses these changes in context of erosional processes.

The role of large scale features

For many of the LGM and some of the PLIO results, changes in 2m air temperature and/or consecutive freezing days significantly contribute to the discriminability in clusters covering mid-latitudes. LGM-C₁ – LGM-C₃ in coastal and high-altitude West Patagonia (South America), LGM-C₁ and PLIO-C₄ in the Himalaya-Tibet region are examples of this. Many of these high-latitude clusters are also characterised by large changes in 2m air
460 temperature and 2m air temperature amplitude in the LGM and PLIO results. The preferential cooling in higher latitudes during the LGM and enhanced meridional temperature gradient [e.g. Otto-Bliesner et al., 2006; Bracannot et al., 2007; Mutz et al., 2018] can be expected to result in more pronounced seasonality and thus higher variation in near surface temperature amplitude. Inversely, the accentuated warming in higher latitude during the (Late) Pliocene [e.g. Salzman et al., 2011; Ballantyne et al., 2010; Mutz et al., 2018] would result in
465 the opposite. These previously studied large-scale features explain much of the characterisation of high-latitude

clusters and the significant contribution of changes in temperature-related variables to regional discriminability. Associated changes in temperature variables can have decisive impacts on physical weathering due to changes in glacial and periglacial processes (see below), as well as to biotic weathering by influencing vegetation cover.

470 *The role of glaciers and periglacial processes*

Changes in temperature in high altitude regions can impact physical weathering through glacial erosion [e.g. Egholm et al., 2009, Herman et al. 2013] and periglacial processes [e.g. Andersen et al., 2015, Marshall et al., 2015]. In southernmost South America, northern Europe and South Alaska (cf. supplemental information), the high discriminability and modes of change on the multivariate anomaly maps for the LGM are primarily
475 controlled by the glaciers covering most of the region. Furthermore, many modes of change in the study regions involve consecutive freezing days and freeze-thaw days. Changes from ice-free to ice-covered conditions, such as in LGM-C₁-LGM-C₃ in coastal and high-altitude West Patagonia (South America) and LGM-C₁-LGM-C₄ in different terrains of Europe, are associated with increases in consecutive freezing days and decreases in freeze-thaw days. The opposite is the case for some modes of changes in the PLIO. For example, PLIO-C₆ in high-
480 altitude Patagonia (South America) is associated with changes from ice-covered to ice-free conditions, as well as with an increase in consecutive freezing days. It may therefore shift from glacier to frost-cracking dominated erosional processes. These modes of change in the PLIO mark possible transition from glacier governed processes to periglacial processes and thus increased frost-cracking as the Earth's surface spends more time in the frost-cracking window [e.g. Matsuoka, 2001; Schaller et al., 2002; Andersen et al., 2015, Marshall et al.,
485 2015], whereas many LGM modes of change suggest the opposite. Finally, glacial pre-conditioning of a landscape can modulate the effect of precipitation on landsliding [Moon et al. 2011].

The role of precipitation characteristics

Areas that have been covered by glaciers during the LGM and experienced a post-LGM increase in maximum
490 precipitation or consecutive wet days may be particularly prone to precipitation-triggered landslides. This is the case, for example, in the regions covered by LGM-C₂ and LGM-C₃ clusters in high-altitude Patagonia and LGM-C₁₁ – LGM-C₃ in northern Europe. More generally, changes in storminess affect erosion through river incision and sediment transport [e.g. Whipple and Tucker, 1999; Hobbey et al., 2010]. Maximum precipitation and consecutive wet days are measures of storm intensity and duration respectively, which are primary controls
495 for runoff and relevant for erosion. In most cases, such as the results for the Himalaya-Tibet region in the LGM and PLIO, the co-variability of consecutive wet days, maximum precipitation and consecutive dry days is intuitive: changes in consecutive wet days and maximum precipitation coincide with changes in consecutive dry days in the opposite direction. Even though palaeovegetation is considered in the set-up of the GCM simulations [Mutz et al., 2018], the modulating effect of vegetation on the impact of changes in the precipitation attribute
500 variables on erosion [e.g. Gyssels et al., 2005] cannot be taken into account here, and thus the reader is advised to do so in their evaluation of the effect of these changes on Earth surface processes. Note also that vegetation modifies river discharge by changing evapotranspiration and infiltration, and modifies hillslope erosion by changing root characteristics [e.g. Schmid et al., 2018]. In absence of significant vegetation changes, areas such as Bhutan, Nepal, Bangladesh and parts of Northern India (MH-C₁ and PLIO-C₁), which experiences strong

505 increases in consecutive wet days and maximum precipitation in the MH and PLIO, are likely to have experienced an increase in such precipitation-induced erosion at these times.

The role of winds

510 Changes in wind speed components affect aeolian erosion, transport, and deposition, as well as mean raindrop trajectories, which should also be taken into consideration in the assessment of local precipitation-induced erosion [de Lima et al, 1992]. The results of this study reveal that changes in near surface meridional and zonal wind speeds contribute little to the discriminability between climates even in regions that experience wind direction changes due to a different ice cover in Europe [e.g. Siegert and Dowdeswell, 2004], which are reproduced well by the model. Wind speeds only show a significant contribution to discriminability (20% -30%)
515 in the subtropical latitudes of South America due to slower meridional winds in the LGM in the region. The distinctiveness in the character of atmospheric dust transport during the LGM [e.g. Andersen et al., 1998] and thus aeolian erosion may be attributed more to system response and changes in vegetation, which cannot be taken into account in this study, than to a distinctiveness of LGM wind speeds.

520 *Comments on methodical implications*

PLIO and LGM clusters are more stable than MH clusters on the multivariate anomaly maps. This stability can be attributed to the relatively large magnitude of climate change in PLIO and LGM time slices. Lower variance of MH anomalies make element attribution to anomaly clusters in the MH more sensitive to randomisation and re-categorisation procedures (section 2.2). Consequently, the nature of MH patterns can be seen as the result of
525 climate change of lower magnitude and less distinctiveness. The most important limitation is the poor representation of precipitation amount in areas of high topography and rainfall [Meehl et al., 2007 and comparisons with ERA-interim and station-based observations not presented here]. However, the threshold for what constitutes a “wet day” or “dry day” is relatively low [Zolina et al., 2010; Zhang et al., 2011; Zin and Jemain, 2010], so that the typical overestimation of total precipitation amount by ECHAM5 in such regions has
530 little or no effect on the attribute variables *consecutive wet days* and *consecutive dry days*, particularly when analysed in comparison to another simulation at a different time (as was done here) which helps reduce any systematic model bias towards high precipitation rates. The overall performance of the palaeoclimate simulations is decent, as comparison with proxy-based reconstructions showed [Li et al. 2017; Mutz et al. 2018]. Erosion-relevant processes that take place on small spatial or short temporal scales, such as intra-storm variations and rainfall characteristics [e.g. Ran et al., 2012], cannot be quantified in this study due to limited
535 model resolution, output frequency and accuracy of such estimates on that scale. The consideration of non-climatic factors, such as local topography, slope and vegetation, is beyond the scope of this study, and the reader is advised to take these into consideration in their assessment of the effect of documented climate change on Earth surface processes. Lastly, since the parameterisation in ECHAM5's land surface scheme creates
540 deficiencies in the representation of the local hydrology and partitioning of precipitation [e.g. Weiland et al., 2011], variables such as runoff are excluded in this study. Routing GCM output through more sophisticated hydrological models or nesting regional climate models in the GCM's would allow ~~more-merited~~ exploration of the regional hydrology.

545 5. Conclusions

In this study, we quantified the differences between pre-industrial and Late Cenozoic palaeoclimates with regard to variables relevant to Earth surface processes, explained these quantified differences and identified dominant patterns and modes of palaeoclimate change. The key findings of this study are:

- 550 ● LGM and PLIO climate change is more distinct and more easily quantified than climate change of the MH. This is reflected in the stability of geographical regions (clusters) showing the extent of regions governed by distinct modes of climate change.
- 555 ● Changes in ice cover result in ~~very~~ distinct signatures of climate change. This is reflected by 1) the creation of clusters geographically associated with ice cover changes, 2) the persistence of these clusters when the assigned number of clusters (k) is varied in the procedure, and 3) ice cover changes in South America leading to the best discriminability overall.
- 560 ● In Europe, changes in 2m air temperature explain most of the discriminability between pre-industrial and all three palaeoclimates (MH, LGM and PLIO). Changes in consecutive freezing days and consecutive wet days are also significant contributors to climate discriminability in LGM and PLIO results respectively. Consequently, these factors lend the Late Cenozoic palaeoclimates their unique signature and should be central in assessments of changes in Earth surface processes.
- 565 ● Increases in freeze-thaw days and temperature often coincide with decreases in consecutive freezing days, and vice versa. Regions governed by these modes of changes, such as western Patagonia during the LGM, are prone to changes in erosional process domain from peri-glacial to glacial or vice versa.
- 570 ● Increases in consecutive wet days and maximum precipitation often coincide with decreases in consecutive dry days. Regions governed by these modes of change, such as locations south of the Himalayan orogen in the PLIO, can be expected to be particularly prone to changes in erosion induced by precipitation and storm characteristics.

575 We note that the methods presented in this study may also be applied to simulations of modern and future climates. Furthermore, the procedure can easily be modified to detect and explain spatiotemporal changes in climate attributes associated with different processes, since the link between climate and the impacted system is established solely on the basis of variable selection. For example, the procedure may be used for the investigation of spatiotemporal changes of climate attributes that are related to specific human adaptation strategies in the past or future. Such method transfer is merited if (1) the underlying statistical assumptions are still satisfied and (2) the chosen variables adequately represent the relationship between climate and the investigated processes. The procedure may also be applied more broadly to any problem that requires the detection of regions (in either geographical or any n^{th} dimensional variable space) associated with specific modes of change in data, and the subsequent quantification and explanation of changes occurring within identified regions.

585

Data availability: All data files used in the presentation of results, as well as the model simulation results this study is based on [Mutz et al., 2018], are freely available through the data download section of our work group wiki (esdynamics.geo.uni-tuebingen.de/wiki/) as set of data products tailored to the needs of different geoscientific communities.

590

Competing interests: The authors declare that they have no conflict of interest.

Acknowledgements: European Research Council (ERC) Consolidator Grant number 615703 provided support for this study. Additional support is acknowledged from the German science foundation (DFG) project number 365266215. We also thank the reviewers (including Andrew Wickert) for their constructive comments and suggestions, which helped us improve this manuscript.

6. References

- 600 Abe-Ouchi, A., Saito, F., Kageyama, M., Bracannot, P., Harrison, S. P., Lambeck, K., Otto-Bliesner, B. L., Peltier, W.R., Tarasov, L., Peterschmitt, J.-Y., Takahashi, K.: Ice-sheet configuration in the CMUP5/PMIP3 Last Glacial Maximum experiments. *Geosci. Model Dev.*, 8, 3621-3637, doi:10.5194/gmd-8-3621-2015, 2015
- Andersen, K. K., Armengaud, A., and Genthon, C.: Atmospheric dust under glacial and interglacial conditions, *Geophysical Research Letters*, 25(13), 2281-2284, 1998.
- 605 Andersen, J., Egholm, D.L., Knudsen, M.F., Jansen, J., Nielsen, S.B., The periglacial engine of mountain erosion – Part 1: Rates of frost cracking and frost creep., *Earth Surface Dynamics*, 3(4), 447-462, 2015.
- Bahrenberg, G., Giese, E., and Nipper, J.: *Multivariate Statistik. Statistische Methoden in der Geographie 2*, Stuttgart, 1992.
- 610 Ballantyne, A.P., Greenwood, D.R., Sinninghe Damste, J.S., Csank, A.Z., Eberle, J.J., and Rybczynski, N.: Significantly warmer Arctic surface temperatures during the Pliocene indicated by multiple independent proxies, *Geology* 38 (7), 603–606, 2010.
- Banfield, J.F., Barker, W.W., Welch, S.A., and Taunton, A.: Biological impact on mineral dissolution: application of the lichen model to understanding mineral weathering in the rhizosphere, *Proceedings of the*
- 615 *National Academy of Sciences*, 96, 3404-3411, 1999.
- Bendick, R., and Ehlers, T.A.: Extreme localized exhumation at syntaxes initiated by subduction geometry, *Geophys. Res. Lett.*, 41(16), 2014GL061026, doi:10.1002/2014GL061026, 2014.
- Bertrand, S., Charlet F., Charlier B., Renson V., and Fagel N.: Climate variability of southern Chile since the Last Glacial Maximum: a continuous sedimentological records from Lago Puyehue (40°S), *J. Paleolimnol.*, 39, 179-195, doi:10.1007/s10933-007-9117-y, 2008.
- 620 Bigelow, N. H., Brubaker, L. B., Edwards, M. E., Harrison, S. P., Prentice, I. C., Anderson, P. M., Andreev, A. A., Bartlein, P. J., Christensen, T. R., Cramer, W., Kaplan, J. O., Lozhkin, A. V., Matveyeva, N. V., Murray, D. V., McGuire, A. D., Razzhivin, V. Y., Ritchie, J. C., Smith, B., Walker, D. A., Gajewski, K., Wolf, V., Holmqvist, B. H., Igarashi, Y., Kremenetskii, K., Paus, A., Pisaric, M. F. J., and Vokova, V. S.:

- 625 Climate change and Arctic ecosystems I. Vegetation changes north of 55°N between the last glacial maximum, mid-Holocene and present. *Journal of Geophysical Research - Atmospheres*, 108(D19), doi: 10.1029/2002JD002558, 2003.
- Bookhagen, B., Thiede, R.C., and Strecker, M.R.: Late Quaternary intensified monsoon phases control landscape evolution in the northwest Himalaya, *Geology*, 33(2), 149-152. doi: 10.1130/G20982.1, 2005.
- 630 Braconnot, P., Otto-Bleisner, B., Harrison, S.P., Joussaume, S., Peterschmitt, J.-Y., Abe-Ouchi, A., Crucifix, M., Driesschaert, E., Fichefet, T., Hewitt, C.D., Kagayama, M., Kitoh, A., Loutre, M.-F., Marti, O., Merkel, U., Ramstein, G., Valdes, P., Weber, L., Yu, Y., and Zhao, Y.: Results of PMIP2 coupled simulations of the mid-Holocene and Last Glacial maximum, part 1: experiments and large-scale features, *Clim Past* 3:261–277, 2007.
- 635 Braconnot, P., Harrison, S. P., Kageyama, M., Bartlein, P. J., Masson-Delmotte, V., Abe-Ouchi, A., Otto-Bliesner, B., and Zhao, Y.: Evaluation of climate models using palaeoclimatic data, *Nature Climate Change*, 2, 417–424, 2012.
- CLIMAP Project Members: Seasonal Reconstruction of the Earth's Surface at the Last Glacial Maximum. *Map and Chart Series*, Vol. 36, Geological Society of America, 18 pp., 1981.
- 640 Deal, E., Braun, J., and Botter, G.: Understanding the Role of Rainfall Hydrology in Determining Fluvial Erosion Efficiency, *JGR Earth Surface*, 123(4), 744-778, 2018. doi: 10.1002/2017JF004393
- Dowsett, H.J., Robinson, M., Haywood, A., Salzmann, U., Hill, D., Sohl, L., Chandler, M., Williams, M., Foley, K., and Stoll, D.: The PRISM3D paleoenvironmental reconstruction. *Stratigraphy*, 7, 123–139, 2010.
- Ehlers, T.A., and Poulsen, C.J.: Influence of Andean uplift on climate and paleoaltimetry estimates, *Earth and Planetary Science Letters*, 281(3-4), 238-248, 2009.
- 645 Gong, X., Knorr, G., Lohmann, G., and Zhang, X.: Dependence of abrupt Atlantic meridional ocean circulation changes on climate background states, *Geophysical Research Letters*, 40 (14), 3698-3704, doi:10.1002/grl.50701, 2013.
- Gyssels, G., Poesen, J., Bochet, E., and Li, Y.: Impact of plant roots on the resistance of soils to erosion by water: a review, *Progress in Physical Geography*, 29, 189–217. <http://doi.org/10.1191/0309133305pp443ra>, 2005.
- 650 Harrison, S. P., Yu, G., Takahara, H., and Prentice, I. C.: Palaeovegetation - Diversity of temperate plants in east Asia. *Nature* 413, 129-130, 2001.
- Haywood, A.M., Dowsett, H.J., Otto-Bliesner, B., Chandler, M.A., Dolan, A.M., Hill, D.J., Lunt, D.J., Robinson, M.M., Rosenbloom, N., Salzmann, U., and Sohl, L.E.: Pliocene Model Intercomparison Project (PlioMIP): experimental design and boundary conditions (Experiment 1), *Geoscientific Model Development* (3), 227-242, 2010.
- 655 Haywood, A.M., Hill, D.J., Dolan, A.M., Otto-Bliesner, B., Bragg, F., Chan, W.-L., Chandler, M.A., Contoux, C., Jost, A., Kamae, Y., Lohmann, G., Lunt, D.J., Abe-Ouchi, A., Pickering, S.J., Ramstein, G., Rosenbloom, N.A., Sohl, L., Stepanek, C., Yan, Q., Ueda, H., and Zhang, Z.: Large-scale features of Pliocene climate: results from the Pliocene Model Intercomparison Project, *Clim. Past*, 9, 191-209. doi:10.5194/cp-9-191-2013, 2013.
- 660 Haywood, A. M., Dowsett, H. J., Dolan, A. M., Rowley, D., Abe-Ouchi, A., Otto-Bliesner, B., Chandler, M. A., Hunter, S.J., Lunt, D. J., Pound, M., and Salzmann, U.: The Pliocene Model Intercomparison Project

- 665 (PlioMIP) Phase 2: scientific objectives and experimental design, *Clim. Past*, 12, 663–675,
<https://doi.org/10.5194/cp-12-663-2016>, 2016.
- Herman, F., Seward, D., Valla, P.G., Carter, A., Kohn, B., Willet, S. D., Ehlers, T. A.: Worldwide acceleration of mountain erosion under a cooling climate. *Nature*, 504, 423-426, 2013.
- Hobley, D.E., Sinclair, H.D., and Cowie, P.A.: Processes, rates, and time scales of fluvial response in an ancient
 670 postglacial landscape of the northwest Indian Himalaya. *Geological Society of America Bulletin*, 122, 1569-1584, 2010.
- Insel, N., Ehlers, T.A., Schaller, M., Barnes, J.B., Tawacoli, S., and Poulsen, C.J.: Spatial and Temporal Variability in Denudation across the Bolivian Andes from Multiple Geochronometers, *Geomorphology*, 122, 65-77, doi.org/10.1016/j.geomorph.2010.05.014, 2010.
- 675 Jeffery, M.L., Ehlers, T.A., Yanites, B.J., and Poulsen, C.J.: Quantifying the role of paleoclimate and Andean Plateau uplift on river incision: PALEOCLIMATE ROLE IN RIVER INCISION, *Journal of Geophysical Research: Earth Surface*, 118(2), 852–871, doi:10.1002/jgrf.20055, 2013.
- Jungclaus, J. H., Lorenz, S. J., Timmreck, C., Reick, C. H., Brovkin, V., Six, K., Segschneider, J., Giorgetta, M.A., Crowley, T.J., Pongratz, J., Krivova, N.A., Vieira, L.E., Solanski, S.K., Klocke, D., Botzet, M.,
 680 Esch, M., Gayler, V., Haak, H., Raddatz, T.J., Roeckner, E., Schnur, R., Widmann, H., Claussen, M., Stevens, B., and Marotzke, J.: Climate and carbon-cycle variability over the last millennium. *Climate of the Past*, 6, 723-737. doi:10.5194/cp-6-723-2010, 2010.
- Kageyama, M., Albani, S., Braconnot, P., Harrison, S. P., Hopcroft, P. O., Ivanovic, R. F., Lambert, F., Marti, O., Peltier, W. R., Peterschmitt, J.-Y., Roche, D. M., Tarasov, L., Zhang, X., Brady, E. C., Haywood, A.
 685 M., LeGrande, A. N., Lunt, D. J., Mahowald, N. M., Mikolajewicz, U., Nisancioglu, K. H., Otto-Bliesner, B. L., Renssen, H., Tomas, R. A., Zhang, Q., Abe-Ouchi, A., Bartlein, P. J., Cao, J., Li, Q., Lohmann, G., Ohgaito, R., Shi, X., Volodin, E., Yoshida, K., Zhang, X., and Zheng, W.: The PMIP4 contribution to CMIP6 – Part 4: Scientific objectives and experimental design of the PMIP4-CMIP6 Last Glacial Maximum experiments and PMIP4 sensitivity experiments, *Geosci. Model Dev.*, 10, 4035–4055,
 690 <https://doi.org/10.5194/gmd-10-4035-2017>, 2017.
- Kageyama, M., Braconnot, P., Harrison, S. P., Haywood, A. M., Jungclaus, J., Otto-Bliesner, B. L., Peterschmitt, J.-Y., Abe-Ouchi, A., Albani, S., Bartlein, P. J., Brierley, C., Crucifix, M., Dolan, A., Fernandez-Donado, L., Fischer, H., Hopcroft, P. O., Ivanovic, R. F., Lambert, F., Lunt, D. J., Mahowald, N. M., Peltier, W. R., Phipps, S. J., Roche, D. M., Schmidt, G. A., Tarasov, L., Valdes, P. J., Zhang, Q.,
 695 and Zhou, T.: PMIP4-CMIP6: the contribution of the Paleoclimate Modelling Inter-comparison Project to CMIP6, *Geosci. Model Dev.*, <https://doi.org/10.5194/gmd-11-1033-2018>, 2018.
- Knorr, G., Butzin, M., Micheels, A., and Lohmann, G.: A Warm Miocene Climate at Low Atmospheric CO₂ levels. *Geophysical Research Letters*, 38, L20701, doi:10.1029/2011GL048873, 2011.
- Kutzbach, J.E., Prell, W.L., and Ruddiman, W.F.: Sensitivity of Eurasian Climate to Surface Uplift of the
 700 Tibetan Plateau, *Journal of Geology*, 101(2), 177-190, 1993.
- Li, J., Ehlers, T.A., Werner, M., Mutz, S.G., Steger, C., Paeth, H.: Late quaternary climate, precipitation $\delta^{18}\text{O}$, and Indian monsoon variations over the Tibetan Plateau. *Earth and Planetary Science Letters* 457, 412-422, 2017.

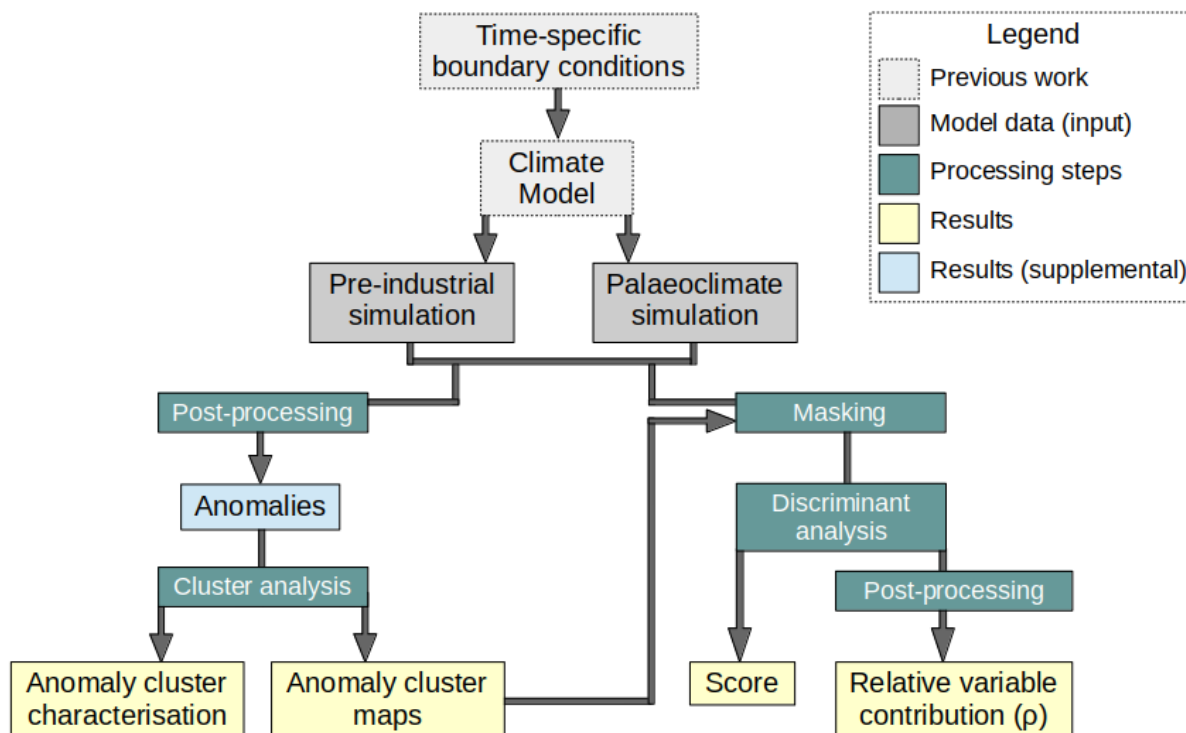
- Lohmann, G., Pfeiffer, M., Laepple, T., Leduc, G., and Kim, J.-H.: A model-data comparison of the Holocene global sea surface temperature evolution. *Clim. Past*, 9, 1807-1839, doi:10.5194/cp-9-1807-2013, 2013.
- 705 Maroon, E. A., Frierson, D. M. W., and Battisti, D. S.: The tropical precipitation response to Andes topography and ocean heat fluxes in an aquaplanet model, *J. Climate*, 28, 381–398, doi:10.1175/JCLI-D-14-00188.1, 2015.
- Maroon, E. A., Frierson, D. M. W., Kang, S. M., and Scheff, J.: The precipitation response to an idealized subtropical continent, *J. Climate*, 29, 4543–4564, doi:10.1175/JCLI-D-15-0616.1, 2016.
- 710 Marshall, J.A., Roering, J.J., Bartlein, P.J., Gavin, D.G., Granger, D.E., Rempel, A.W., Praskievicz, S.J., and Hales, T.C.: Frost for the trees: Did climate increase erosion in unglaciated landscapes during the late Pleistocene? *Science Advances*, 1, 1-10, 2015.
- Matsuoka, N.: Solifluction rates, processes and landforms: A global review. *Earth Science Reviews* 55, 107–134, 2001.
- 715 Meehl, G.A.; Stocker, T. F.; Collins, W. D.; Friedlingstein, P.; et al. In: Solomon, S.; Qin, D.; Manning, M.; Chen, Z.; Marquis, M.; Averyt, K. B.; Tignor, M.; Miller, H. L. editors, editor/s. IPCC, 2007: Climate Change 2007: the physical science basis. contribution of Working Group I to the Fourth Assessment Report of the Intergovernmental Panel on Climate Change. Cambridge, U.K.: Cambridge University Press; 2007.
- 720 Montgomery, D.R.: Slope distributions, threshold hillslopes, and steady-state topography, *American Journal of Science*, 301, 432-454, 2001.
- Moon, S., Chamberlain, C.P., Blisniuk, K., Levine, N., Rood, D.H., Hilley, G.E.: Climatic control of denudation in the deglaciated landscape of the Washington Cascades, *Nature Geoscience*, 4, 469-473, 2011.
- 725 Mutz, S.G., Ehlers, T.A., Li, J., Steger, C., Peath, H., Werner, M., Poulsen, C.J.: Precipitation $\delta^{18}\text{O}$ over the South Asia Orogen from ECHAM5-wiso Simulation: Statistical Analysis of Temperature, Topography and Precipitation. *Journal of Geophysical Research-Atmospheres*, 121(16),9278-9300, doi: 10.1002/2016JD024856, 2016.
- Mutz S.G., Ehlers T., Werner M., Lohmann G., Stepanek C., Li J.: Estimates of Late Cenozoic climate change relevant to Earth surface processes in tectonically active orogens. *Earth Surface Dynamics*. doi.org/10.5194/esurf-6-271-2018.
- 730 Otto-Bliesner, B.L., Brady, C.B., Clauzet, G., Tomas, R., Levis, S., and Kothavala, Z.: Last Glacial Maximum and Holocene Climate in CCSM3. *Journal of Climate*, 19, 2526-2544, 2006.
- Otto-Bliesner, B. L., Braconnot, P., Harrison, S. P., Lunt, D. J., Abe-Ouchi, A., Albani, S., Bartlein, P. J., Capron, E., Carlson, A. E., Dutton, A., Fischer, H., Goelzer, H., Govin, A., Haywood, A., Joos, F., LeGrande, A. N., Lipscomb, W. H., Lohmann, G., Mahowald, N., Nehrbaas-Ahles, C., Pausata, F. S. R., Peterschmitt, J.-Y., Phipps, S. J., Renssen, H., and Zhang, Q.: The PMIP4 contribution to CMIP6 – Part 2: Two interglacials, scientific objective and experimental design for Holocene and Last Interglacial simulations, *Geosci. Model Dev.*, 10, 3979–4003, <https://doi.org/10.5194/gmd-10-3979-2017>, 2017.
- 735 Paeth, H.: Key Factors in African Climate Change Evaluated by a Regional Climate Model, *Erdkunde*, 58, 290-315, 2004.
- 740

- Pfeiffer, M., and Lohmann, G.: Greenland Ice Sheet influence on Last Interglacial climate: global sensitivity studies performed with an atmosphere-ocean general circulation model. *Climate of the Past*, 12, pp. 1313-1338, doi:10.5194/cp-12-1313-2016, 2016.
- 745 Pickett, E.J., Harrison, S.P., Flenley, J., Grindrod, J., Haberle, S., Hassell, C., Kenyon, C., MacPhail, M., Martin, H., Martin, A.H., McKenzie, M., Newsome, J.C., Penny, D., Powell, J., Raine, J.I., Southern, W., Stevenson, J., Sutra, J.-P., Thomas, I., van der Kaars, S., Ward, J.: Pollen-based reconstructions of biome distributions for Australia, South-East Asia and the Pacific (SEAPAC region) at 0, 6000 and 18,000 14C years B.P.. *Journal of Biogeography*, 31, 1381–1444, doi: 10.1111/j.1365-2699.2004.01001.x, 2004.
- 750 Prentice, I. C., Jolly, D., and BIOME 6000 Participants. (2000). Mid-Holocene and glacial-maximum vegetation geography of the northern continents and Africa. *Journal of Biogeography* 27, 507-519.
- Ran, Q., Su, D., Li, P., and He, Z.: Experimental study of the impact of rainfall characteristics on runoff generation and soil erosion. *Journal of Hydrology*, 424-425, 99-111, 2012.
- Salzmann, U., Williams, M., Haywood, A.M., Johnson, A.L.A., Kender, S., and Zalasiewicz, J.: Climate and environment of a Pliocene warm world. *Palaeogeography, Palaeoclimatology, Palaeoecology*, 309 (1-8), 2011.
- 755 Sarnthein, M., Gersonde, R., Niebler, S., Pflaumann, U., Spielhagen, R., Thiede, J., Wefer, G., Weinelt, M.: Overview of Glacial Atlantic Ocean Mapping (GLAMAP 2000), *Paleoceanography*, 18(2), doi:10.1029/2002PA000769, 2003.
- 760 Schaller, M., von Blanckenburg, F., Veldkamp, A., Tebbens, L.A., Hovius, N., and Kubik, P.W.: A 30 000 yr record of erosion rates from cosmogenic 10 Be in Middle European river terraces, *Earth and Planetary Science Letters*, 204(1), 307–320, 2002.
- Schmid, M., Ehlers, T.A., Werner, C., Hickler, T., Fuentes-Espoz, J.-P.: Effects of changing vegetation and precipitation on denudation – Part 2: Predicted landscape response to transient climate and vegetation cover over millennial to million-year timescales, *Earth Surface Dynamics*, 6, 859-881, <https://doi.org/10.5194/esurf-6-859-2018>, 2018.
- 765 Sohl, L.E., Chandler, M.A., Schmunk, R.B., Mankoff, K., Jonas, J.A., Foley, K.M., and Dowsett, H.J.: PRISM3/GISS topographic reconstruction, *U.S. Geological Survey Data Series*, 419, 6p., 2009.
- Siegert, M. J., and Dowdeswell, J. A.: Numerical reconstruction of the Eurasian Ice Sheet and climate during the Late Weichselian. *Quaternary Science Reviews*, 23, 1273-1283, 2004.
- 770 Starke, J., Ehlers, T. A., and Schaller, M.: Tectonic and Climatic Controls on the Spatial Distribution of Denudation Rates in Northern Chile (18°S-23°S) Determined From Cosmogenic Nuclides. *Journal of Geophysical Research: Earth Surface*, 122, 1949-1971. doi:10.1002/2016JF004153, 2017.
- Stepanek, C., and Lohmann, G.: Modelling mid-Pliocene climate with COSMOS , *Geosci. Model Dev.* , 5 , pp. 1221-1243 . doi:10.5194/gmd-5-1221-2012, 2012.
- 775 Stock, G.M., Frankel K.L., Ehlers, T.A., Schaller, M., Briggs, S.M., Finkel R.C.: Spatial and temporal variations in denudation of the Wasatch Mountains, Utah, USA, *Lithosphere GSA*, v. 1, pp. 34-40. doi.org/10.1130/L15.1, 2009.
- Takahashi, K., and Battisti, D.: Processes controlling the mean tropical pacific precipitation pattern. Part I: The Andes and the eastern Pacific ITCZ. *Journal of Climate*, 20(14), 3434-3451, 2007.
- 780

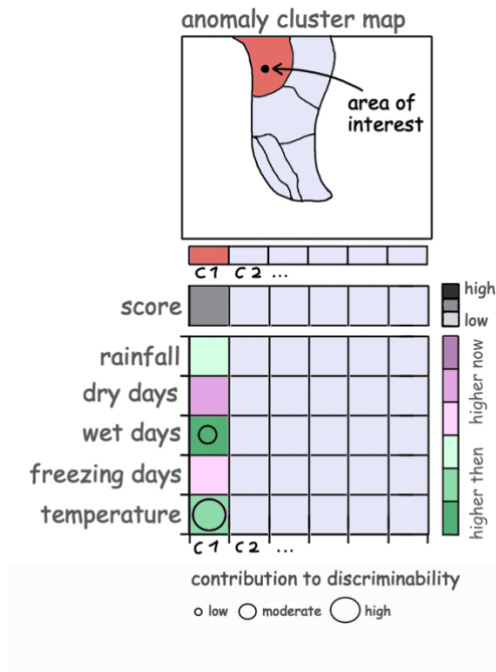
- Whipple, K.X., and Tucker, G.E.: Dynamics of the stream-power river incision model: Implications for height limits of mountain ranges, landscape response timescales, and research needs, *Journal of Geophysical Research-Solid Earth*, 104, 17661-17674, 1999.
- 785 Whipple, K. X.: The influence of climate on the tectonic evolution of mountain belts, *Nat. Geosci.*, 2, doi:10.1038/ngeo413, 2009.
- Wei, W., and Lohmann, G.: Simulated Atlantic Multidecadal Oscillation during the Holocene. *Journal of Climate*, 25, 6989–7002. doi: <http://dx.doi.org/10.1175/JCLI-D-11-00667.1>, 2012.
- Weiland, F.C.S., van Beek, L.P.H., Kwadjik, J.C.J., and Bierkens, M.F.P.: On the Suitability of GCM Runoff Fields for River Discharge Modelling: A Case Study Using Model Output from HadGEM2 and ECHAM5. 790 *Journal of Hydrometeorology*, 13, 140-154, 2011.
- Wickert, A.D: Reconstruction of North American drainage basins and river discharge since the Last Glacial Maximum. *Earth Surface Dynamics*, 4, 831-869. doi:10.5194/esurf-4-831-2016, 2016.
- Wilks, D.S.: Statistical methods in the atmospheric sciences - 3rd ed. Academic Press, Oxford, 2011.
- 795 Willett, S.D., Schlunegger, F., and Picotti, V.: Messinian climate change and erosional destruction of the central European Alps. *Geology*, 34(8), 613-616, 2006.
- Zhang, X., Lohmann, G., Knorr, G., and Purcell C.: Abrupt glacial climate shifts controlled by ice sheet changes. *Nature*, 512 (7514), 290-294, doi:10.1038/nature13592, 2014.
- Zhang, Q., Singh, V. P., Li, J., and Chen, X.: Analysis of periods of maximum consecutive wet days in China. *Journal of Geophysical Research*, 116, D23106, <http://dx.doi.org/10.1029/2011JD016088>, 2011.
- 800 Zin, W. Z. W., and Jemain A. A.: Statistical distributions of extreme dry spell in Peninsular Malaysia. *Theor Appl Climatol*, 102, 253-264, 2010.
- Zolina, O., Simmer, C., Gulev, S.K., and Kollet, S.: Changing structure of European precipitation: Longer wet periods leading to more abundant rainfall. *Geophysical Research Letters*, 37, L06704, doi:10.1029/2010GL042468, 2010.

805

810



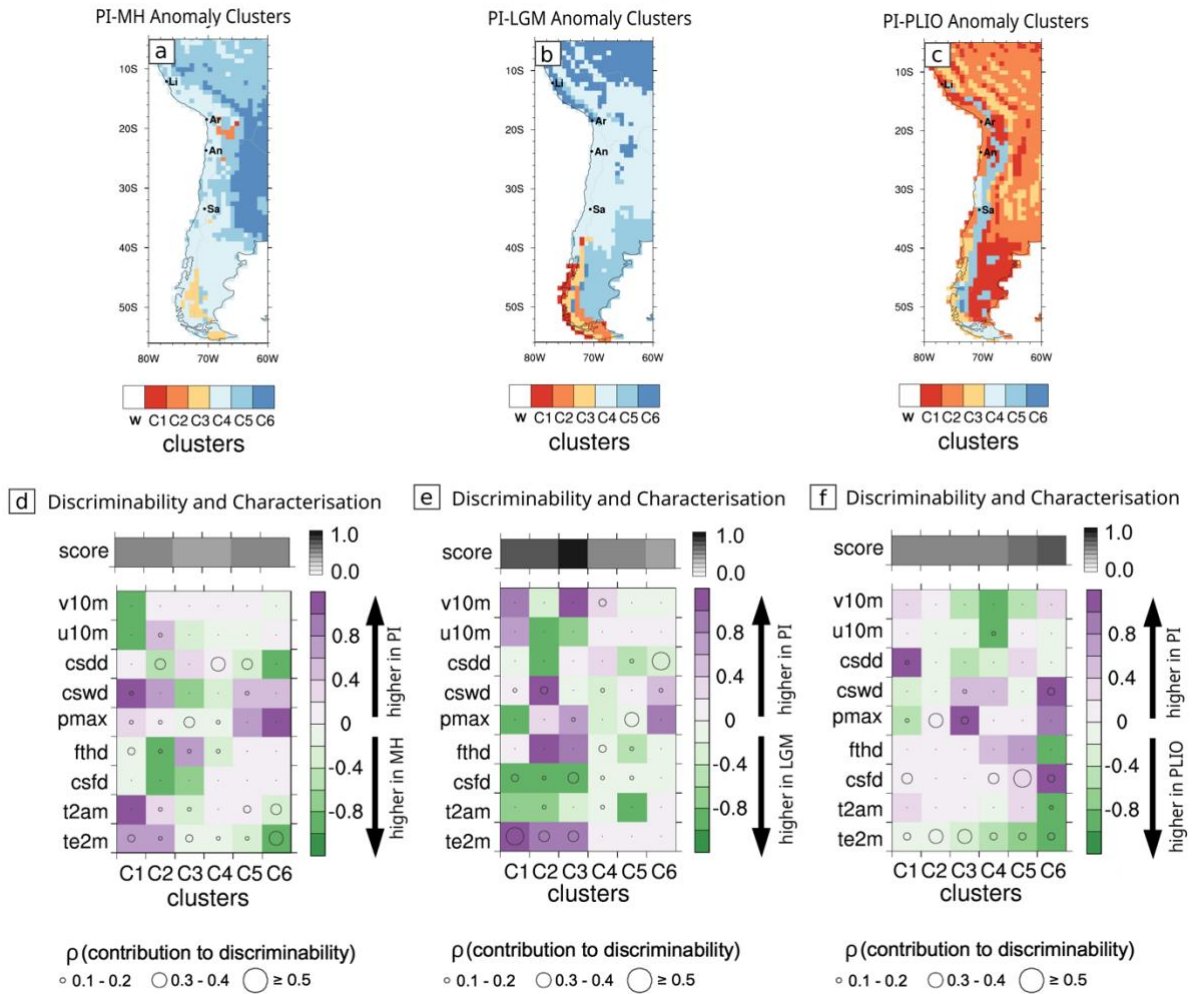
815 Fig. 1 Anomalies are created from pre-industrial (PI) and Late Cenozoic palaeoclimates (MH, LGM, PLIO).
 These are subjected to geographical clustering, which results in the identification of distinct modes of climate
 change (anomaly cluster characterisation) and maps showing the spatial extent of regions governed by these
 modes (anomaly cluster maps). These are used as geographical masks for palaeoclimate simulations. For each of
 these anomaly clusters, a discriminant analysis is conducted to quantify the discriminability in each cluster
 820 (score) and the relative contribution of each climatic variable to this discriminability.



825 Fig. 2 Example problem: Investigating how climatic boundary conditions for erosion processes have changed in
 a specific region of interest involves consultation of part of the conceptualised results figure. The location of the
 region of interest geographically coincides with the region assigned to cluster C1. Consequently, only the results
 related to C1 are consulted and the rest is greyed out. The clusters were calculated from the differences in the
 values (delta values) of geomorphic variables between two different times (T1 and T2) in the late Cenozoic, and
 thus represent a specific mode of change. The mode of change associated with the cluster of interest (C1) is
 revealed by the purple-green column. The relative contributions of the delta values to the overall
 830 discriminability between T1 and T2 in cluster C1, indicated by the score, is revealed by the diameters of the
 circle superimposed onto the delta values in the purple-green column.

835

840



845

Fig. 3 The multivariate anomaly maps for time slice comparisons PI-MH(a), PI-LGM(b) and PI-PLIO(c) show the geographical coverage of clusters C_1 - C_i in Western South America, which describe the spatial extend of regions characterised by similar modes of change. The corresponding modes of change (d,e and f) for each cluster are expressed as relative changes in each of the 9 investigated variables (table 1): 2m air temperature (te2m), 2m air temperature amplitude (t2am), consecutive freezing days (csfd), freeze-thaw days (fthd), maximum precipitation (pmax), consecutive wet days (cswd), consecutive dry days (csdd), zonal near surface wind speeds (u10) and meridional near surface wind speeds (v10). The score (d,e and f) expresses the goodness of discriminability between the palaeoclimate pairs PI-MH(d), PI-LGM(e) and PI-PLIO(f) in each of the anomaly clusters. The size of the circles corresponds to the relative contribution of each of the 9 climatic attribute variables to the measured discriminability in each anomaly cluster for all three time slice comparisons.

850

855

860

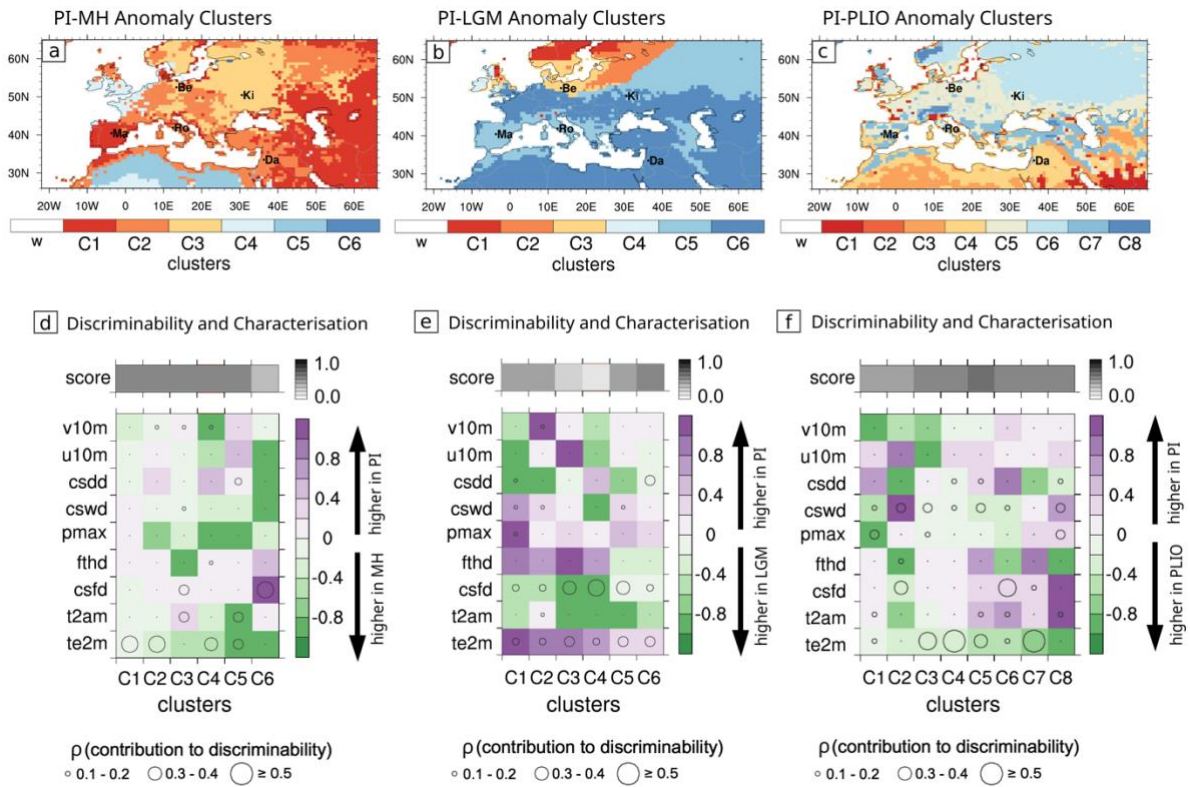
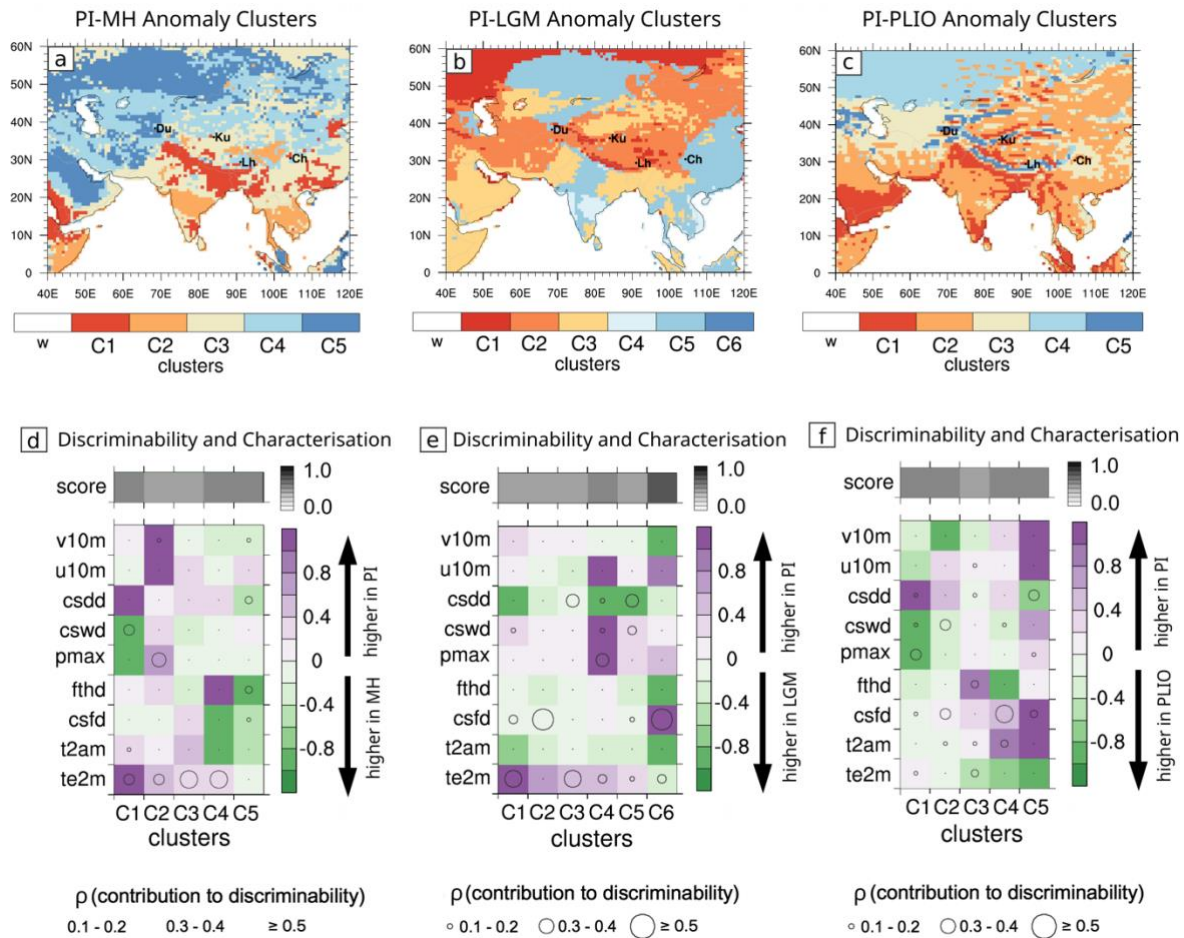


Fig. 4 The multivariate anomaly maps for time slice comparisons PI-MH(a), PI-LGM(b) and PI-PLIO(c) show the geographical coverage of clusters C₁-C_i in Europe, which describe the spatial extent of regions characterised by similar modes of change. The corresponding modes of change (d,e and f) for each cluster are expressed as relative changes in each of the 9 investigated variables (table 1): 2m air temperature (te2m), 2m air temperature amplitude (t2am), consecutive freezing days (csfd), freeze-thaw days (fthd), maximum precipitation (pmax), consecutive wet days (cswd), consecutive dry days (csdd), zonal near surface wind speeds (u10) and meridional near surface wind speeds (v10). The score (d,e and f) expresses the goodness of discriminability between the palaeoclimate pairs PI-MH(d), PI-LGM(e) and PI-PLIO(f) in each of the anomaly clusters. The size of the circles corresponds to the relative contribution of each of the 9 climatic attribute variables to the measured discriminability in each anomaly cluster for all three time slice comparisons.



875

880

885

Fig. 5 The multivariate anomaly maps for time slice comparisons PI-MH(a), PI-LGM(b) and PI-PLIO(c) show the geographical coverage of clusters C_1 - C_i in Himalaya-Tibet, which describe the spatial extend of regions characterised by similar mod of change. The corresponding modes of change (d,e and f) for each cluster are expressed as relative changes in each of the 9 investigated variables (table 1): 2m air temperature (te2m), 2m air temperature amplitude (t2am), consecutive freezing days (csfd), freeze-thaw days (fthd), maximum precipitation (pmax), consecutive wet days (cswd), consecutive dry days (csdd), zonal near surface wind speeds (u10) and meridional near surface wind speeds (v10). The score (d,e and f) expresses the goodness of discriminability between the palaeoclimate pairs PI-MH(d), PI-LGM(e) and PI-PLIO(f) in each of the anomaly clusters. The size of the circles corresponds to the relative contribution of each of the 9 climatic attribute variables to the measured discriminability in each anomaly cluster for all three time slice comparisons.

890

Attribute Variables			
Code	Units	Explanation	Geomorphic relevance
te2m	°C	Mean annual air temperature at 2m height	(peri-)glacial processes, vegetation
t2am	°C	Maximum intra-monthly variation of 2m air temperature	(peri-)glacial processes, vegetation, frost-cracking
csfd	days	Number of consecutive days with surface temperature conditions below 0°C	(peri-)glacial processes, frost cracking
fthd	days	Number of times the 0°C threshold is crossed from day to day	(peri-)glacial processes, frost cracking
pmax	mm/d	Maximum daily precipitation value in a month	landslides, runoff, river incision, vegetation conditions
cswd	days	Number of consecutive days experiencing precipitation exceeding 1 mm/d	landslides, runoff, river incision, vegetation conditions
csdd	days	Number of consecutive days experiencing precipitation below 1 mm/d	landslides, runoff, river incision, vegetation, aeolian erosion
u10	m/s	Zonal (along-latitude) wind speeds at 10m height	aeolian erosion, transport, deposition, raindrop trajectories
v10	m/s	Zonal (along-longitude) wind speeds at 10m height	aeolian erosion, transport, deposition, raindrop trajectories

895 Table 1: Code, units, explanation and geomorphic relevance of each of the climate attribute variables used in the cluster- and discriminant analysis.