

Temperature effects on heavy rainfall modify catchment hydro-morphological response

Nadav Peleg¹, Chris Skinner², Simone Fatichi¹, Peter Molnar¹

¹Institute of Environmental Engineering, ETH Zurich, Zurich, Switzerland

5 ²Energy and Environment Institute, University of Hull, UK

Supplementary Material

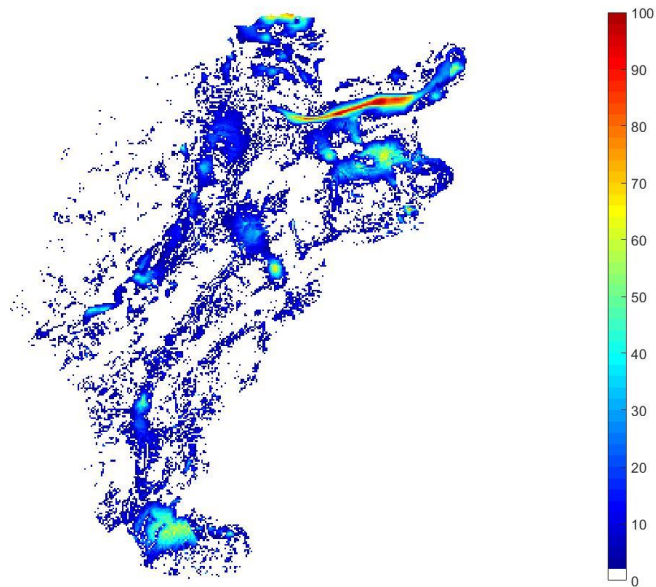


Figure S1. Sediment thickness map of Kleine Emme, units are in meters.

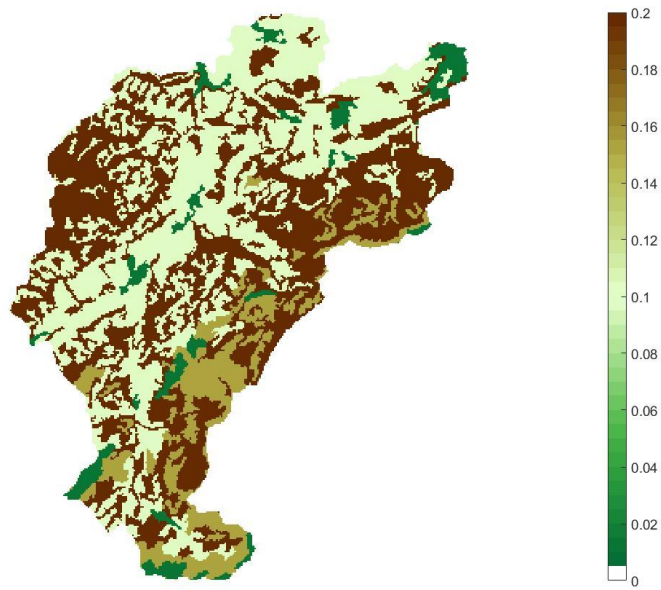
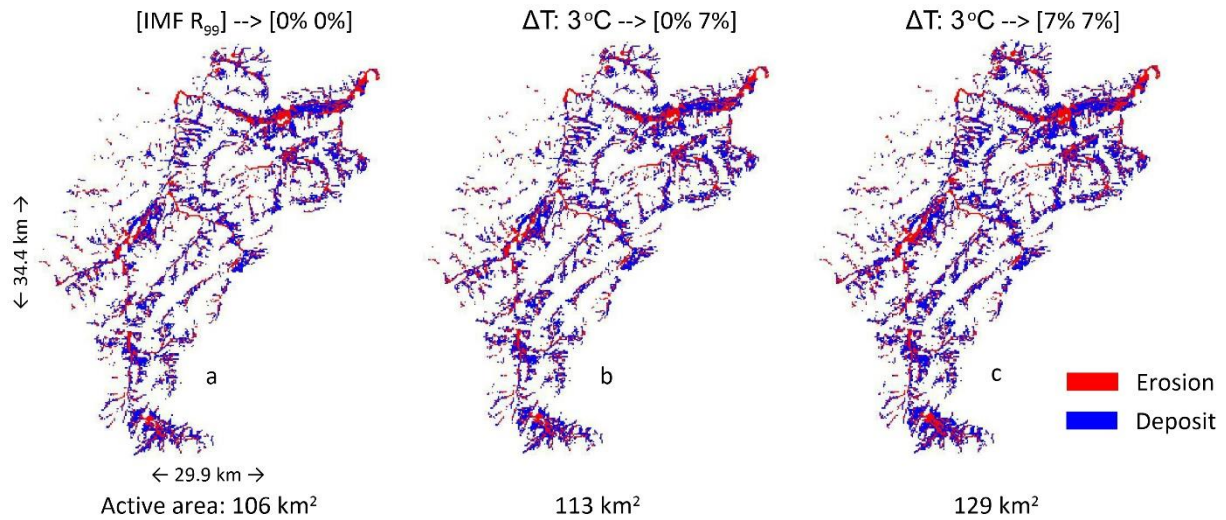


Figure S2. Mannings n values over Kleine Emme.



- 5 Figure S3. An example to the changes in the area of erosion (red) and deposition (blue) with storm spatial characteristics. IMF stands for changes in the areal rainfall and R_{99} for changes in the peak rainfall intensity at the grid-scale.