

Measuring river planform changes from remotely sensed data: A Monte Carlo approach to assess the impact of spatially variable error

Timothée Jautzy¹, Pierre-Alexis Herrault¹, Valentin Chardon¹, Laurent Schmitt¹, and Gilles Rixhon^{1,2}

¹Laboratoire Image, Ville, Environnement (LIVE UMR 7362), Université de Strasbourg, CNRS, ENGEES, ZAEU LTER, 3 rue de l'Argonne, 67083 Strasbourg, France

²Ecole Nationale du Génie de l'Eau et de l'Environnement de Strasbourg (ENGEES), CNRS, 1 quai Koch, 67000 Strasbourg, France

Correspondence: Timothée Jautzy (timothee.jautzy2@etu.unistra.fr)

Abstract.

Remotely sensed data from fluvial systems are extensively used to document historical planform changes. However, geometric and delineation errors inherently associated with these data can result in poor or even misleading interpretation of measured changes, especially rates of channel lateral migration. It is thus imperative to take into account a spatially variable (SV) error affecting the remotely sensed data. In the wake of recent key studies using this SV error as a level of detection, we introduce a new framework to evaluate the significance of measured channel migration. Going beyond linear metrics (i.e., migration vectors between diachronic river centrelines), we assess significance through a channel polygon method yielding a surficial metric (i.e., quantification of eroded, deposited, or eroded then deposited surfaces).

Our study area is an active wandering mid-sized river: the lower Bruche, a ~20 m wide tributary of the Rhine in eastern France. Within our four test sub-reaches, the active channel is digitised using diachronic orthophotos (1950; 1964) and the SV error affecting the data is interpolated with an Inverse Distance Weighting (IDW) technique. The novelty of our approach arises from then running Monte Carlo (MC) simulations to randomly translate active channels and propagate geometric and delineation errors according to the SV error. This eventually leads to the computation of percentage of uncertainties associated with each of the measured planform changes, which allows us to evaluate the significance of the planform changes. In the lower Bruche, the uncertainty associated with the documented changes ranges from 15.8 to 52.9 %.

Our results show that (i) orthophotos are affected by a significant SV error; (ii) the latter strongly affects the uncertainty of measured changes; and (iii) the significance of changes is dependent on both the magnitude and the shape of the surficial changes. Taking the SV error into account is strongly recommended even on orthorectified aerial photos, especially in the case of mid-sized rivers (<30 m width) and/or low amplitude river planform changes (<1 m²/m/yr). In addition to allowing detection of low-magnitude planform changes, our approach also is transferable as we use well-established tools (IDW, MC): this opens new perspectives in the fluvial context (e.g., multi-thread river channels) for robustly assessing surficial channel changes.

1 Introduction

In a fluvial context, remotely sensed data provide spatial information on historical lateral dynamics of river channels (Bollati et al., 2014; Cadol et al., 2010; Comiti et al., 2011; Gurnell et al., 1994; Hajdukiewicz and Wyżga, 2019; Lauer et al., 2017).

5 This is of crucial importance for creating a scientific framework applicable to sustainable management of hydrosystems, including river restoration (Biron et al., 2014; Piégay et al., 2005; Surian et al., 2009). Aerial photographs are thus commonly used to document and measure planform channel changes over a time period of at the most the last century in a wide variety of fluvial settings. Requiring data coregistration and river bank digitisation, these planimetric studies often result in the quantification of lateral migration rates (e.g., Hooke and Yorke, 2010; Janes et al., 2017; Mandarino et al., 2019; O'Connor et al.,
10 2003).

However, two major sources of spatial uncertainty inherently compromise the robustness of these planimetric methods: the delineation error due to digitisation of river banks (Downward et al., 1994; Güneralp et al., 2014; Gurnell et al., 1994; Micheli and Kirchner, 2002; Werbylo et al., 2017) and the geometric error due to data coregistration (Gaeuman et al., 2005; Hughes et al., 2006; Liébault and Piégay, 2001; Payraudeau et al., 2010; Swanson et al., 2011). Whatever the scope of the study and
15 the environmental context, these uncertainties must be assessed as accurately as possible (De Rose and Basher, 2011; Donovan et al., 2019; Mount and Louis, 2005; Mount et al., 2003). Root Mean Square Error (RMSE) has been frequently used for this purpose over the past several decades to quantify the uniform geometric error affecting co-registered planimetric data (Table 1). Lea and Legleiter (2016), however, demonstrated that the RMSE approach was too simplistic because co-registered data are affected by spatially variable (SV) geometric error. To test the impact of such error on the quantification of lateral migration,
20 the SV error was used as a SV Level of Detection (LoD): this approach allowed detecting 33 % of statistically significant changes (migrations) instead of only 24 % with the RMSE/uniform error approach (Lea and Legleiter, 2016). The thorough review of Donovan et al. (2019) reached the same conclusion: they encouraged the generalisation of SV error assessment and also noted the potential need for testing SV-LoD on new metrics of lateral migration, including areal metrics of surface change.

Both Lea and Legleiter (2016) and Donovan et al. (2019) developed a LoD for a linear metric (Fig. 1a) implemented in
25 the Planform Statistics Toolbox (Lauer, 2006), which reports fluvial planform changes as a linear adjustment. However, by conflating river banks onto a unique centreline (Fig. 1a), a linear metric can oversimplify geomorphological changes. This approach can fail to detect observed lateral adjustments when, for instance, channel widening or narrowing occurs without any significant lateral migration of the centreline (Miller and Friedman, 2009; Rowland et al., 2016). This is all the more relevant for mid-sized rivers (width<30 m; EPCEU, 2000; Table 1) which, along with their importance in terms of river geomorphological
30 management (Marçal et al., 2017), are particularly prone to be impacted by delineation and geometric errors (Lauer et al., 2017).

This study aims to advance the generalisation of SV error assessment methods in fluvial settings by testing its impact on the quantification of lateral migration using a surficial metric: the channel polygon method (Fig. 1b). The latter consists in the

extraction of eroded, deposited, and eroded then deposited surfaces from overlaid diachronic channels. SV error is assessed on two diachronic orthophotos of the lower Bruche (i.e., a mid-sized tributary of the Rhine), by spatial interpolation (Lea and Legleiter, 2016) based on an independent set of ground control points (Hughes et al., 2006). The main novelty of our approach is running Monte Carlo (MC) simulations (Metropolis and Ulam, 1949) to propagate the geometric error in measurements of eroded and/or deposited surfaces. This eventually allows computing the uncertainty associated to surficial changes, to which a threshold is applied to detect non-significant planform changes.

More specifically, this study tests three hypotheses in the fluvial context: (1) orthophotos are affected by a locally significant SV error; (2) SV error highly affects the variability of MC simulated measurements of eroded and/or deposited surfaces; and (3) the uncertainty of surficial changes depends on their magnitude. This work also evaluates the effectiveness of MC simulations in measuring fluvially eroded and/or deposited surfaces and assessing their significance.

2 Study area

Located in easternmost France (Alsace), the Bruche river is a mid-sized tributary of the Rhine with a drainage area of about 730 km². The 80 km long river firstly drains the eastern flank of the Vosges Massif before debouching into the Upper Rhine Graben (Fig. 2a). Although highly impacted by human activities (levee/canal construction, channelisation, artificial cut-offs), this alluvial river is known to have been laterally active over historical times (Maire, 1966; Payraudeau et al., 2010; Schmitt et al., 2007). This is especially true in its lowermost reach where it flows through the Strasbourg urban area (Fig. 2a), raising important management issues (Payraudeau et al., 2008; Skupinski et al., 2009). Our test site is a 6 km long wandering reach located a few kilometres upstream of the Ill confluence: the river freely meanders within its Holocene floodplain and locally erodes Late Pleistocene terraces deposits of the lower Bruche about 2 km from its confluence as well (Fig. 2a; Maire, 1966). In this reach, the Bruche has a 20 m wide mean active channel and a mean slope of 1‰. The daily two-year (Q_2) and ten-year (Q_{10}) peak flow discharges amount to 71 m³/s and 126 m³/s, respectively, for the period 1965-2018. The specific stream power at the Q_2 discharge roughly amounts to 27 W/m².

3 Methodology

3.1 Remotely sensed data

To measure eroded and/or deposited surfaces on our study area, two orthophotos from 1950 and 1964 were used. They were produced by the French National Geographic Institute (IGN) and the Laboratoire Image Ville Environnement (LIVE) of the University of Strasbourg; they have a spatial resolution of 50 and 20 cm, respectively. Both are projected in RGF93/CC48 CRS (EPSG: 3948), which is the most accurate projection in this area. Despite the lack of hydrological data in the lower Bruche before 1965, we assume surveys were conducted during moderate to low water, according to the period of the year during which the photos were taken (09/13/50; 04/17/64) and our inspection of the orthophotos.

Active channel is a widely used concept to objectively identify channel boundaries on aerial photographs, regardless of the river discharge. It basically refers to the unvegetated area (Liébault and Piégay, 2001; Liro, 2015; Mandarino et al., 2019; Surian et al., 2009; Winterbottom, 2000). Here, active channel boundaries have been digitised by a single user in QGIS at a 1/300 scale. To reliably assess the SV error, we used a 2015 orthophoto as the base image; it was produced by the IGN with a resolution of 20 cm.

3.2 SV error assessment

On both orthophotos (1950; 1964) of our study area, spatial variations of geometric error are assessed by an approach similar to that used by Lea and Legleiter (2016). However, because we use orthophotos (which are already coregistered), we must rely on an independent set of GCPs, as suggested by Hughes et al. (2006). We selected a total of 18 GCPs, including both hard (buildings, canal) and soft (pathway intersections, trees) features (Fig. 2a). After identification and manual plotting on the 2015 orthophoto, they are identified to both older orthophotos at a 1/200 computer-screen scale. The spatial distribution of GCPs in the study area is rather uniform, though hard edges are restricted to the northern sector (Fig. 2a).

Local Root Square Error (RSE) is then measured for each of the 18 GCPs, on both orthophotos. Error in x or y corresponds to the euclidean distance between the two points for x and y coordinates, respectively. SV error is calculated by interpolating local RSE on our whole study area with an Inverse Distance Weighting (IDW) technique at the original spatial resolution (Fig. 4). IDW uses a linear combination of values at specific sampled points. It allocated weights proportional to the proximity of the sampled points to estimate values at unknown locations (Ikechukwu et al., 2017). We used the IDW interpolation method for two main reasons. First, based on a comparison of five interpolation methods, Lea and Legleiter (2016) showed that linear and nearest neighbour methods reduce the areal extent of large co-registration errors. These methods are thus discarded as they can strongly limit the influence of large co-registrations errors on the estimation of surficial changes. Then, in a comparative study of spatial interpolation methods to produce a Digital Elevation Model from a small set of points that were not spatially uniform, Tan and Xu (2014) showed that IDW provided better results than spline or kriging. Because of the difficulties of selecting a high number of independent control points spatially uniform over time in archival remotely sensed data, we argue that IDW is a reliable method to interpolate the registration error in our case.

3.3 Sub-reaches

To examine the implications of SV error on lateral migration measurements, we focus on four distinct sub-reaches (Fig. 2). Their mean talweg lengths amount to 530, 380, 700 and 890 meters long (upstream-downstream order). They are (1) an extending and narrowing meander, (2) an almost straight (apparently inactive) sector, (3) two alternate meanders (the first one slightly extending and the second one displaying a small cut-off), and (4) a long meander extending at the downstream end of the curve. We selected geomorphologically distinct sub-reaches to evaluate the effect of both different magnitude changes and types of geomorphic processes.

3.4 MC simulations

3.4.1 Channel boundary simulation method

MC simulations as statistical methods are generally used in cases where processes are random or when assumptions in the theoretical mathematics are not well-known (Brown and Duh, 2004; Openshaw et al., 1991). Applying MC simulations in this research context is the main novelty of this study. This approach has two main advantages. Firstly, MC simulations are particularly well suited to our problem because of the difficulty of distinguishing between inherent and processing errors in the measured RSE over the whole area. Secondly, MC simulations assume a spatial continuity and a relative spatial homogeneity of the error, which is consistent with resulting spatial patterns of errors observed after the coregistration or digitising process. MC simulations are also relatively easy to perform and applicable in very different cases. This approach could thus improve the generalisation of methods for calculating planform changes and spatially variable uncertainty in a fluvial context, as suggested by Donovan et al. (2019).

The approach used in this study followed the rules of boundary simulations (Burrough et al., 2015). Figure 3 illustrates this part of our methodology. As described in the previous section, SV error has been interpolated over the whole study area. For each channel node, all pixels in a 5 m buffer were first selected. A check of the local distributions of error (Shapiro test) showed a normal distribution for a vast majority of them. The normal distribution of error was then calculated by averaging the mean local error and by calculating the standard deviation for each node, in each sub-reach. Hence, for each run (1000 runs in total), a specific value of error in x ($e_x[i = 1, \dots, 1000]$) and y ($e_y[i = 1, \dots, 1000]$) was randomly extracted from the respective normal distribution (Fig. 3b) in order to shift each node from its original position.

Furthermore, in accordance with the results from Podobnikar (2008), the shape of a particular channel is assumed to remain coherent after simulation. In this study, as the distance between nodes is significantly higher than the local registration error, it is possible to move nodes of each sub-reach in any x and y directions without significantly impacting the shape. However, when this condition above is violated (in historical maps for instance, see Herrault et al. (2013)), the operation can potentially lead to strong geometrical errors such as “butterfly polygons” or excessive geometric distortions (Fig. 3c). These errors might be partially corrected (e.g., via a moving average algorithm or Douglas Peucker filtering) but can result in erroneous modifications of the original channel shape. Thus, we proposed a hybrid solution to simulate the node shifting in space : (1) nodes from one sub-reach can move in any y direction (i.e., positive or negative) at each run; (2) nodes from one sub-reach can move in only one x direction at each run (Fig.3b). Considering the strong correlation of registration errors between two successive points, constraining the shifting direction for one of the two coordinates allows maintaining the directional sequence of several successive nodes and avoiding the butterfly polygon issue. From a wider perspective, the last operation allows (i) avoiding topological errors (Fig. 3c) while simulating the most probable displacements of channel polygons, and (ii) probably enhancing the transferability of our method to other fluvial settings. The direction of errors in x and y were randomly selected at each MC simulation with equal probability weights (i.e. 50 % each).

Last, as mentioned by Donovan et al. (2019), it is quite hard to distinguish between errors inherent to the coregistration and digitising processes. For this reason, a digitising error (e_d) equal to 1 pixel was added as a reasonable constraint within the

simulation process, considering the resolution of the orthophotos. This digitising error is assumed to be uniform over the entire area and does not fluctuate in different simulation runs (equations 1 and 2). Only the direction in x and y was randomly defined for each node of one sub-reach at each MC simulation. These directions may vary from one node to another for one given sub-reach.

- 5 The overall mathematical expression of the simulation process can be expressed as follows:

$$x_{changed} = x_{original} + |e_x| \times \beta_1 + e_d \times \beta_2 \quad (1)$$

$$y_{changed} = y_{original} + |e_y| \times \beta_1 + e_d \times \beta_2 \quad (2)$$

- 10 where $|e_x|$ and $|e_y|$ are the absolute registration error in x and y, respectively. The constant e_d is the digitising error equal to 1 pixel. β_1 and β_2 respectively are the coefficients of shifting direction (i.e. 1 or -1) of the registration error (i.e. $|e_x|$ and $|e_y|$) and the digitizing error (e_d), randomly selected at each run. In our study, β_1 was constant for each $x_{changed}$ of one subreach (i.e. constrained in only one direction).

3.4.2 Lateral migration measurements

- 15 Lateral migration of the river channel between 1950 and 1964 is calculated through three standard surficial morphological metrics (erosion, deposition, both erosion then deposition) illustrated in Fig. 1b. Note that the metric "erosion then deposition" measured in the area located between the former channel (T1) and the new one (T2) does not always imply continuous lateral channel migration followed by deposition. Sudden lateral shifts of meanders (e.g. through meander cutoff) or meander belts (e.g. through channel avulsion) may be involved as well and require specific geomorphological attention. Therefore, at each MC
- 20 run, new values of metrics are derived for each sub-reach (Fig. 3a) in order to estimate fluctuations induced by coregistration and digitising errors.

3.4.3 Impact of SV error on uncertainty of lateral migration measurements

- To evaluate the uncertainty associated to lateral migration measurements within each sub-reach and to allow comparison between the four sub-reaches, two types of relative uncertainty were calculated for each morphological metric (erosion, de-
- 25 position, erosion then deposition). The first one (equation 3) corresponds to the total percentage of uncertainty and involves the total range of measured values (max-min) through MC simulation. The second one (equation 4) corresponds to the 95 % uncertainty percentage and involves the 95 % confidence interval. Their mathematical expressions are, respectively:

$$Total\ uncertainty = \frac{\frac{1}{2} \times (max - min)}{mean} \times 100 \quad (3)$$

$$95\% \text{ uncertainty} = \frac{\frac{1}{2} \times 95\% \text{ confidence interval width}}{\text{mean}} \times 100 \quad (4)$$

Relative percentages of uncertainty inform about the variability of measurements induced by the SV error through MC simulation, observed in each sub-reach and for each morphological metric. We thus use these relative percentages of uncertainty to set a threshold of 50 % above which the uncertainty is considered too high to yield a reliable measurement, i.e. a significant change in channel migration. It is proposed to apply the 50 % threshold on both percentages of uncertainty: the less conservative one (i.e. 95 % uncertainty > 50 %) and the more conservative one (i.e. total uncertainty > 50 %). While the former does not include outliers, the latter, which corresponds to a measurement whose mean value is lower than the total range of measured values (max-min), does. In other words, applying the 50 % proposed threshold on the total uncertainty amounts to assume that outliers can be “real” (i.e. that they can represent plausible situations). By contrast, applying the 50 % proposed threshold on the 95 % uncertainty amounts to reject the outliers, assuming that they can’t be “real” (implausible situations).

4 Results

4.1 SV error

Figure 4 shows the interpolated SV error in x, y and the total SV error ($\sqrt{e_x^2 + e_y^2}$), for the year 1950. The mean value of total SV error in each sub-reach for both years (Fig. 5) indicates that sub-reach 4 is affected by the highest (1.32 m) and the lowest (0.61 m) error in 1950 and in 1964, respectively. These values approximately corresponds to the range of total SV error reached by the four sub-reaches. Whereas the total SV error was divided by a factor 2 between 1950 and 1964 in the sub-reach 4, it remained fairly stable in the three other ones, ranging from 0.6 (sub-reach 3) to 1.2 m (sub-reach 1).

4.2 MC simulations

An example of variations in measurements of eroded surface through MC simulations is presented for sub-reach 1 in Fig. 6. The entirety of MC results are available in Appendix A. A large majority of the measurements appear to be randomly varying around and close to the mean value, inside the 95 % confidence interval. Note that few outliers sometimes largely extends the maximum range compared to the 95 % confidence interval, especially when very low values occur. For instance, MC simulations for deposited surfaces in sub-reach 1 include an outlier with a value ($2.5 \cdot 10^3 m^2$) corresponding to 38 % of the mean measured value ($6.8 \cdot 10^3 m^2$).

Mean changes inferred from MC simulations between 1950 and 1964 are presented in Fig. 7a. Comparison between sub-reaches is allowed by the normalisation of the surficial changes by the respective talweg lengths of each sub-reach (expressed thus in m^2/m). Whatever the sub-reach, changes in eroded or deposited surfaces are much larger than those associated to erosion/deposition. The latter are either negligible (sub-reaches 1 and 3) or not recorded (sub-reaches 2 and 4). Sub-reach 1 shows the largest migration: eroded and deposited surfaces amount to $9.1 \pm 4.9\%$ and $12.8 \pm 3.5\% m^2/m$, respectively. By contrast, sub-reach 2 shows the lowest migration: eroded and deposited surfaces amount to $2.1 \pm 24.7\%$ and $1.8 \pm 30.8\% m^2/m$,

respectively. Intermediate measurements are reported in sub-reaches 3 and 4 where they range between $1.4 \pm 25.3\%$ (deposition; sub-reach 4) and $4.5 \pm 8.5\%$ m^2/m (erosion; sub-reach 4). Note that, in these two last sub-reaches, changes in eroded surfaces are at least twice higher than those in deposited surfaces.

4.3 Uncertainty in lateral migration measurements

- 5 The relative percentage of measurement uncertainty in surficial changes is presented both in the 95 % confidence interval (95 % uncertainty; equation 4; Fig. 7b) and in the whole range of measured values (Total uncertainty; equation 3; Fig. 7c). As a reminder, the 95 % uncertainty does not take into account the presence of outliers, while the total uncertainty does. The 95 % uncertainty varies from 3.5 to 43.4 %. These extreme values both occur in sub-reach 1, for the deposited and the eroded then deposited surfaces, respectively. The total uncertainty varies from 15.8 to 52.9 %. These extreme values both occur in
- 10 sub-reach 4 and 1, for the eroded and the eroded then deposited surfaces, respectively. Sub-reaches 2 and 4 both display the same pattern between the 95 % and the total uncertainty, with the uncertainty related to the deposited surface being higher than that related to the eroded one. In contrast, sub-reaches 1 and 3 do not display the same pattern between the 95 % and the total uncertainty. For sub-reach 1 and relative to the uncertainty of the eroded surface, the uncertainty of the deposited surface is higher than the latter only when taking into account the presence of outliers (total uncertainty). For sub-reach 3 and relative to
- 15 the uncertainty of the eroded/deposited surface, the uncertainty of the eroded surface is higher than the latter only when taking into account the presence of outliers (total uncertainty).

5 Discussion and research perspectives

In the light of these new results, we first discuss the three hypotheses underlying this study. In a second step, we propose some methodological guidelines together with promising further implications of this study.

20 5.1 SV error implications on uncertainty of surficial planform changes

- Our results support the first hypothesis: they confirm that orthophotos are affected by a local significant SV error. Within our relatively small (~ 6 km²) and flat study area, we interpolated a total SV error ranging from 0.26 to 1.89 m (Fig. 4) while mean values of total SV error range from 0.61 to 1.32 m for the four sub-reaches (Fig. 5). This emphasises the need to take the SV error into account and, importantly, to assess its impact on the uncertainty of the measured changes (Lea and Legleiter, 2016;
- 25 Donovan et al., 2019), even if the characteristics of the studied reach may appear unproblematic at first glance. Moreover, as orthophotos are used in this study, we draw particular attention on the relevance of this statement in the case of studies using co-registered aerial photographs for similar purposes (e.g., Cadol et al., 2010; Hooke and Yorke, 2010; Sanchis-Ibor et al., 2019).

- Our results also support the second hypothesis: the SV error highly affects the variability of MC simulated measurements
- 30 of eroded and/or deposited surfaces. Variability of the surficial measurements has been assessed by calculating the relative percentages of uncertainty induced by the SV error through the MC simulations. Whereas the more conservative percentage

of uncertainty (total uncertainty) ranges from 15.8 to 52.9 %, depending on the metric and the sub-reach, the less conservative percentage of uncertainty (95 % uncertainty) still ranges from 3.5 to 43.4 %. These results highlight the potentially high impact that SV error can have on variability of surficial measurements and consequently on their uncertainty.

When applying the more conservative threshold of significance (50 % of total uncertainty; cf part 3.4.3), it appears that only one surficial change has to be considered non-significant (eroded/deposited surface in sub-reach 1; Fig. 7c). However, the latter can be considered significant when applying the less conservative threshold of significance (Fig. 7b), because its uncertainty does not reach the 50 % threshold. Whilst this contrast may call into question whether or not the presence of outliers should be taken into account, visual comparison of specific situations may help unravelling this issue. As illustrated in Fig. 8, only subtle areal and shape differences may be observed between an inlier and an outlier, the latter likely representing a geomorphologically plausible situation. When using MC simulations in this context, we thus strongly suggest inspecting outliers and not systematically rejecting them. When the geomorphological plausibility of outliers is doubtful, we recommend using the total percentage of uncertainty.

Our results partly validate the third hypothesis: the uncertainty of surficial changes depends on their magnitude, but also possibly on their respective shapes. A contrasted pattern of uncertainty is observed between the sub-reaches 2 and 4 versus sub-reaches 1 and 3. Whereas the former seemingly display uncertainties solely related to the magnitude of changes (i.e., higher uncertainties for lower surficial changes), the latter don't (i.e., in some cases, higher uncertainties for higher surficial changes; see part 4.3; Fig. 7). It is the case for instance in sub-reach 3, which displays a higher total uncertainty for the eroded surface than for the eroded then deposited surface. Yet, as sub-reaches 1 and 3 display the most complex geomorphological shapes and channel evolution compared to sub-reaches 2 and 4 (Fig. 2b), we suggest that uncertainty of surficial measurements might also be strongly influenced by channel morphology and its evolution through time.

5.2 Methodological guidelines and potential applications

In order to improve the generalisation of tools documenting fluvial planform changes and facilitate the implementation of our new methodological framework, we can summarise the complete workflow as follows (see Fig. 9 for more details): (1) interpolate the SV error on the study area (as recommended in Lea and Legleiter, 2016), (2) calibrate a normal distribution around nodes to randomly translate these (see Appendix B for more details), (3) choose a significance threshold and visually check the outliers to eventually (4) assess the significance of the measured surficial planform changes. The key step (2) is achieved via MC simulation, which is well-known for its simplicity, reliability and transferability (Brown and Duh, 2004; Openshaw et al., 1991). Simulation outputs allow assessing both the total and the 95 % uncertainties (Fig. 9).

We suggest a few practical recommendations when applying the proposed methodological framework. If orthophotos are employed, we strongly advise using an independent set of GCPs for coregistration, bearing in mind that orthophotos are affected by a significant SV error (see 5.1). As for GCPs, their amount must be high enough and their distribution over the entire study area as homogeneous as possible. As pointed out by Hughes et al. (2006), a location of these GCPs close to the river system is highly beneficial. As for the 50 % significance threshold, we recommend applying it on the total uncertainty, as outliers might represent geomorphologically plausible situations (Fig. 8). Nevertheless, the few outliers (Fig. 6) should still be treated

in an empirical manner by visually determining if they should be rejected or not. Further work is required in the near future to deal with this issue in a more automatic way. More generally, when studying historical lateral migration of mid-sized rivers (active channel width <30 m) and/or low magnitude changes (<1 m²/m/y) with the channel polygon method, we emphasise the systematic need for assessing both SV error and uncertainty, as some of the measured changes might be non-significant (see 5.1).

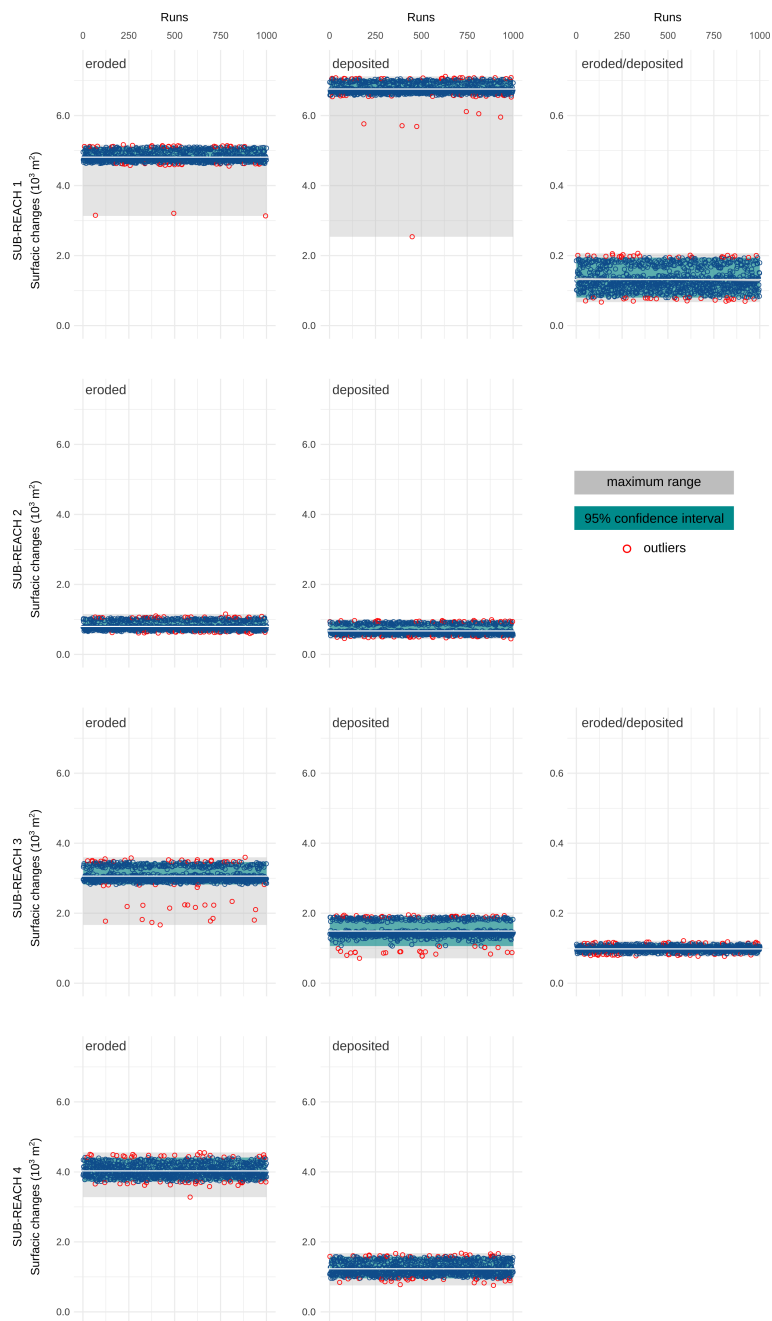
This study, though focusing on short sub-reaches of a mid-sized (~20 m), meandering (single-thread) channel using specific remotely sensed data over a short timescale (archival orthophotos), has a strong potential for transferability. Firstly, we assume that our methodological framework could be applied to any fluvial system, regardless of its size. Secondly, we likewise argue that it could be relatively easily extended onto an entire river reach by increasing the sub-reach database and/or onto a longer temporal scale by increasing the historical river channel database (Fig. 9). As for the size/length of the sub-reaches, we recommend adapting it according to the complexity of the planform changes and/or the channel pattern (e.g., anastomosing and anabranching channel patterns). As for the river channel database, other remotely sensed data, such as co-registered aerial photographs and satellite imagery, or traditional planimetric data (maps) can be easily integrated as well. Thirdly, transferring this framework to other channel patterns represents a promising future research topic. In contrast to the centreline approach (e.g., Lea and Legleiter, 2016), the channel polygon method would actually suit the study of lateral mobility of multi-threaded channels (including anastomosing rivers which usually are characterised by a low lateral mobility), with a robust assessment of the SV error. Unlike this present study where planimetric changes associated to erosion/deposition are negligible, we might expect a higher proportion of these changes in this kind of fluvial setting. Overall, long-term landscape reconstruction studies could also largely benefit from the methodology we propose. In particular, works combining multiple diachronic spatial sources (e.g., old aerial photographs, historical and cadaster maps, satellite images) should draw particular attention because of the possible propagation of uncertainty in the assessment of landscape changes.

We conclude by stating that this study offers promising research prospects. Firstly, a key outcome is the ability of MC simulations to actually detect low-magnitude planform changes in mid-sized river channels. This positive achievement thus overcomes the main difficulty related to the use of classic planimetric methods in such settings (Piégay et al., 2005), as recently highlighted by Lauer et al. (2017), who failed to detect noticeable changes in mid-sized active channels (width <25 m). Secondly, as for river restoration, our methodological framework should help constructing robust scenarios of future river management, especially those based on past planform changes (e.g., Marçal et al., 2017). Thirdly, significance assessment of planform changes can strengthen the studies using surfaces of active channel as input for sediment budgeting (Wheaton et al., 2009). Finally, whilst this study, together with Lea and Legleiter (2016) and Donovan et al. (2019), draws a specific attention to the SV error and, more globally, uncertainties in planimetric studies in a wide range of fluvial settings, the proposed propagation of geometric error via MC simulations could be extended to other geomorphological contexts where surface extraction from remotely sensed data is involved.

Author contributions. All authors contributed to the conception of this study and manuscript writing. TJ wrote most of the manuscript, produced the initial data and figures; TJ and PAH conceptualised the global processing chain and performed Monte Carlo simulations; VC contributed to result interpretation; LS and GR provided a complete review of the manuscript; GR supervised the text harmonisation.

Competing interests. The authors declare that they have no conflict of interest.

- 5 *Acknowledgements.* This work was supported by the scientific council of the ENGEES. We warmly thank Grégoire Skupinski (LIVE) for providing orthophotos. We are grateful to Josué Jautzy (Geological Survey of Canada) for his valuable review of the first draft. We also thank two anonymous reviewers who helped to significantly improve this manuscript. This work has been entirely produced with free and open-source programs (QGIS;R;GDAL;Inkscape;LibreOffice;LaTeX).



Appendix A: Monte Carlo simulation results for every sub-reach.

References

- Biron, P. M., Buffin-Bélanger, T., Larocque, M., Choné, G., Cloutier, C.-A., Ouellet, M.-A., Demers, S., Olsen, T., Desjarlais, C., and Eyquem, J.: Freedom Space for Rivers: A Sustainable Management Approach to Enhance River Resilience, *Environmental Management*, 54, 1056–1073, <https://doi.org/10.1007/s00267-014-0366-z>, 2014.
- 5 Bollati, I., Pellegrini, L., Rinaldi, M., Duci, G., and Pelfini, M.: Reach-scale morphological adjustments and stages of channel evolution: The case of the Trebbia River (northern Italy), *Geomorphology*, 221, 176–186, <https://doi.org/10.1016/j.geomorph.2014.06.007>, 2014.
- Brown, D. G. and Duh, J.-D.: Spatial simulation for translating from land use to land cover, *International Journal of Geographical Information Science*, 18, 35–60, <https://doi.org/10.1080/13658810310001620906>, 2004.
- Burrough, P. A., McDonnell, R., McDonnell, R. A., and Lloyd, C. D.: Principles of geographical information systems, Oxford University Press, 2015.
- 10 Cadol, D., Rathburn, S. L., and Cooper, D. J.: Aerial photographic analysis of channel narrowing and vegetation expansion in Canyon De Chelly National Monument, Arizona, USA, 1935–2004, *River Research and Applications*, 27, 841–856, <https://doi.org/10.1002/rra.1399>, 2010.
- Comiti, F., Da Canal, M., Surian, N., Mao, L., Picco, L., and Lenzi, M.: Channel adjustments and vegetation cover dynamics in a large gravel bed river over the last 200 years, *Geomorphology*, 125, 147–159, <https://doi.org/10.1016/j.geomorph.2010.09.011>, 2011.
- 15 De Rose, R. C. and Basher, L. R.: Measurement of river bank and cliff erosion from sequential LIDAR and historical aerial photography, *Geomorphology*, 126, 132–147, <https://doi.org/10.1016/j.geomorph.2010.10.037>, 2011.
- Donovan, M., Miller, A., Baker, M., and Gellis, A.: Sediment contributions from floodplains and legacy sediments to Piedmont streams of Baltimore County, Maryland, *Geomorphology*, 235, 88–105, <https://doi.org/10.1016/j.geomorph.2015.01.025>, <https://linkinghub.elsevier.com/retrieve/pii/S0169555X15000458>, 2015.
- 20 Donovan, M., Belmont, P., Notebaert, B., Coombs, T., Larson, P., and Souffront, M.: Accounting for uncertainty in remotely-sensed measurements of river planform change, *Earth-Science Reviews*, 193, 220–236, <https://doi.org/10.1016/j.earscirev.2019.04.009>, 2019.
- Downward, S., Gurnell, A., and Brookes, A.: A methodology for quantifying river channel planform change using GIS, *IAHS Publications-Series of Proceedings and Reports-Intern Assoc Hydrological Sciences*, 224, 449–456, 1994.
- 25 EPCEU: Directive 2000/60/EC of the European parliament and of the council of 23 October 2000 establishing a framework for Community action in the field of water policy, *Official Journal of the European Communities*, p. 72, https://ec.europa.eu/health/sites/health/files/endocrine_disruptors/docs/wfd_200060ec_directive_en.pdf, 2000.
- Gaeuman, D., Symanzik, J., and Schmidt, J. C.: A Map Overlay Error Model Based on Boundary Geometry, *Geographical Analysis*, 37, 350–369, <https://doi.org/10.1111/j.1538-4632.2005.00585.x>, 2005.
- 30 Gurnell, A. M., Downward, S. R., and Jones, R.: Channel planform change on the River Dee meanders, 1876–1992, *Regulated Rivers: Research & Management*, 9, 187–204, <https://doi.org/10.1002/rrr.3450090402>, 1994.
- Güneralp, , Filippi, A. M., and Hales, B.: Influence of river channel morphology and bank characteristics on water surface boundary delineation using high-resolution passive remote sensing and template matching: river water delineation using remote sensing and template matching., *Earth Surface Processes and Landforms*, 39, 977–986, <https://doi.org/10.1002/esp.3560>, 2014.
- 35 Hajdukiewicz, H. and Wyzga, B.: Aerial photo-based analysis of the hydromorphological changes of a mountain river over the last six decades: The Czarny Dunajec, Polish Carpathians, *Science of The Total Environment*, 648, 1598–1613, <https://doi.org/10.1016/j.scitotenv.2018.08.234>, 2019.

- Herrault, P.-A., Sheeren, D., Fauvel, M., Monteil, C., and Paegelow, M.: A comparative study of geometric transformation models for the historical 'Map of France' registration, *Geographia Technica*, 8, 34–46, 2013.
- Hooke, J. M. and Yorke, L.: Rates, distributions and mechanisms of change in meander morphology over decadal timescales, *River Dane*, UK, *Earth Surface Processes and Landforms*, 35, 1601–1614, <https://doi.org/10.1002/esp.2079>, 2010.
- 5 Hughes, M. L., McDowell, P. F., and Marcus, W. A.: Accuracy assessment of georectified aerial photographs: implications for measuring lateral channel movement in a GIS, *Geomorphology*, 74, 1–16, 2006.
- Ikechukwu, M. N., Ebinne, E., Idorenyin, U., and Raphael, N. I.: Accuracy Assessment and Comparative Analysis of IDW, Spline and Kriging in Spatial Interpolation of Landform (Topography): An Experimental Study, *Journal of Geographic Information System*, 09, 354–371, <https://doi.org/10.4236/jgis.2017.93022>, 2017.
- 10 Janes, V. J. J., Nicholas, A. P., Collins, A. L., and Quine, T. A.: Analysis of fundamental physical factors influencing channel bank erosion: results for contrasting catchments in England and Wales, *Environmental Earth Sciences*, 76, 307, <https://doi.org/10.1007/s12665-017-6593-x>, 2017.
- Lauer, J. W. and Parker, G.: Net local removal of floodplain sediment by river meander migration, *Geomorphology*, 96, 123–149, <https://doi.org/10.1016/j.geomorph.2007.08.003>, 2008.
- 15 Lauer, J. W., Echterling, C., Lenhart, C., Belmont, P., and Rausch, R.: Air-photo based change in channel width in the Minnesota River basin: Modes of adjustment and implications for sediment budget, *Geomorphology*, 297, 170–184, <https://doi.org/10.1016/j.geomorph.2017.09.005>, 2017.
- Lauer, W.: NCED Stream Restoration Toolbox-Channel Planform Statistics And ArcMap Project, National Center for Earth-Surface Dynamics (NCED), https://repository.nced.umn.edu/browser.php?current=keyword&keyword=5&dataset_id=15&folder=237802, 2006.
- 20 Lea, D. M. and Legleiter, C. J.: Refining measurements of lateral channel movement from image time series by quantifying spatial variations in registration error, *Geomorphology*, 258, 11–20, <https://doi.org/10.1016/j.geomorph.2016.01.009>, 2016.
- Legleiter, C. J.: Downstream Effects of Recent Reservoir Development on the Morphodynamics of a Meandering Channel: Savery Creek, Wyoming, USA, *River Research and Applications*, 31, 1328–1343, <https://doi.org/10.1002/rra.2824>, 2015.
- Liro, M.: Estimation of the impact of the aerialphoto scale and the measurement scale on the error in digitization of a river bank, *Zeitschrift für Geomorphologie*, 59, 443–453, <https://doi.org/10.1127/zfg/2014/0164>, 2015.
- 25 Liébault, F. and Piégay, H.: Assessment of channel changes due to long-term bedload supply decrease, Roubion River, France, *Geomorphology*, 36, 167–186, [https://doi.org/10.1016/S0169-555X\(00\)00044-1](https://doi.org/10.1016/S0169-555X(00)00044-1), 2001.
- Lovric, N. and Tomic, R.: Assessment of Bank Erosion, Accretion and Channel Shifting Using Remote Sensing and GIS: Case Study – Lower Course of the Bosna River, *Quaestiones Geographicae*, 35, 81–92, <https://doi.org/10.1515/quageo-2016-0008>, 2016.
- 30 Maire, G.: La Basse-Bruche : cône de piedmont et dynamique actuelle, Ph.D. thesis, Université de Strasbourg, Faculté de géographie et d'aménagement, 1966.
- Mandarino, A., Maerker, M., and Firpo, M.: Channel planform changes along the Scrivia River floodplain reach in northwest Italy from 1878 to 2016, *Quaternary Research*, 91, 620–637, <https://doi.org/10.1017/qua.2018.67>, 2019.
- Marçal, M., Brierley, G., and Lima, R.: Using geomorphic understanding of catchment-scale process relationships to support the management of river futures: Macaé Basin, Brazil, *Applied Geography*, 84, 23–41, <https://doi.org/10.1016/j.apgeog.2017.04.008>, 2017.
- 35 Metropolis, N. and Ulam, S.: The Monte Carlo Method, *Journal of the American Statistical Association*, 44, 335–341, <https://doi.org/10.1080/01621459.1949.10483310>, 1949.

- Micheli, E. R. and Kirchner, J. W.: Effects of wet meadow riparian vegetation on streambank erosion. 2. Measurements of vegetated bank strength and consequences for failure mechanics, *Earth Surface Processes and Landforms*, 27, 687–697, <https://doi.org/10.1002/esp.340>, 2002.
- Miller, J. R. and Friedman, J. M.: Influence of flow variability on floodplain formation and destruction, Little Missouri River, North Dakota, *Geological Society of America Bulletin*, 121, 752–759, <https://doi.org/10.1130/B26355.1>, 2009.
- Morais, E. S., Rocha, P. C., and Hooke, J.: Spatiotemporal variations in channel changes caused by cumulative factors in a meandering river: The lower Peixe River, Brazil, *Geomorphology*, 273, 348–360, <https://doi.org/10.1016/j.geomorph.2016.07.026>, 2016.
- Mount, N. and Louis, J.: Estimation and propagation of error in measurements of river channel movement from aerial imagery, *Earth Surface Processes and Landforms*, 30, 635–643, <https://doi.org/10.1002/esp.1172>, 2005.
- 10 Mount, N., Louis, J., Teeuw, R., Zukowskyj, P., and Stott, T.: Estimation of error in bankfull width comparisons from temporally sequenced raw and corrected aerial photographs, *Geomorphology*, 56, 65–77, [https://doi.org/10.1016/S0169-555X\(03\)00046-1](https://doi.org/10.1016/S0169-555X(03)00046-1), <https://linkinghub.elsevier.com/retrieve/pii/S0169555X03000461>, 2003.
- O'Connor, J. E., Jones, M. A., and Haluska, T. L.: Flood plain and channel dynamics of the Quinault and Queets Rivers, Washington, USA, *Geomorphology*, 51, 31–59, [https://doi.org/10.1016/S0169-555X\(02\)00324-0](https://doi.org/10.1016/S0169-555X(02)00324-0), 2003.
- 15 Openshaw, S., Charlton, M., and Carver, S.: Error propagation: a Monte Carlo simulation, *Handling geographical information*, pp. 78–101, 1991.
- Payraudeau, S., Glatron, S., Rozan, A., Eleuterio, J., Auzet, A.-V., Weber, C., and Liébault, F.: Inondation en espace péri-urbain: convoquer un éventail de disciplines pour analyser l'aléa et la vulnérabilité de la basse-Bruche (Alsace), in: *actes du colloque «Vulnérabilités sociétales, risques et environnement. Comprendre et évaluer»*, Université Toulouse–le Mirail, vol. 14, p. 15, 2008.
- 20 Payraudeau, S., Galliot, N., Liébault, F., and Auzet, A.-V.: Incertitudes associées aux données géographiques pour la quantification des vitesses de migration des méandres-Application à la vallée de la Bruche, *Revue Internationale de Géomatique*, 20, 221–243, 2010.
- Piégay, H., Darby, S. E., Mosselman, E., and Surian, N.: A review of techniques available for delimiting the erodible river corridor: a sustainable approach to managing bank erosion, *River Research and Applications*, 21, 773–789, <https://doi.org/10.1002/rra.881>, 2005.
- Podobnikar, T.: Simulation and Representation of the Positional Errors of Boundary and Interior Regions in Maps, in: *Geospatial Vision*, edited by Moore, A. and Drecki, I., pp. 141–169, Springer Berlin Heidelberg, Berlin, Heidelberg, https://doi.org/10.1007/978-3-540-70970-1_7, 2008.
- 25 Rhoades, E. L., O'Neal, M. A., and Pizzuto, J. E.: Quantifying bank erosion on the South River from 1937 to 2005, and its importance in assessing Hg contamination, *Applied Geography*, 29, 125–134, <https://doi.org/10.1016/j.apgeog.2008.08.005>, 2009.
- Rowland, J. C., Shelef, E., Pope, P. A., Muss, J., Gangodagamage, C., Brumby, S. P., and Wilson, C. J.: A morphology independent methodology for quantifying planview river change and characteristics from remotely sensed imagery, *Remote Sensing of Environment*, 184, 212–228, <https://doi.org/10.1016/j.rse.2016.07.005>, 2016.
- 30 Sanchis-Ibor, C., Segura-Beltrán, F., and Navarro-Gómez, A.: Channel forms and vegetation adjustment to damming in a Mediterranean gravel-bed river (Serpis River, Spain): Channel and vegetation adjustment to damming in a gravel bed river, *River Research and Applications*, 35, 37–47, <https://doi.org/10.1002/rra.3381>, 2019.
- 35 Schmitt, L., Maire, G., Nobelis, P., and Humbert, J.: Quantitative morphodynamic typology of rivers: a methodological study based on the French Upper Rhine basin, *Earth Surface Processes and Landforms*, 32, 1726–1746, <https://doi.org/10.1002/esp.1596>, 2007.
- Schook, D. M., Rathburn, S. L., Friedman, J. M., and Wolf, J. M.: A 184-year record of river meander migration from tree rings, aerial imagery, and cross sections, *Geomorphology*, 293, 227–239, <https://doi.org/10.1016/j.geomorph.2017.06.001>, 2017.

- Skupinski, G., BinhTran, D., and Weber, C.: Les images satellites Spot multi-dates et la métrique spatiale dans l'étude du changement urbain et suburbain – Le cas de la basse vallée de la Bruche (Bas-Rhin, France), *Cybergeo*, <https://doi.org/10.4000/cybergeo.21995>, 2009.
- Surian, N., Mao, L., Giacomini, M., and Ziliani, L.: Morphological effects of different channel-forming discharges in a gravel-bed river, *Earth Surface Processes and Landforms*, 34, 1093–1107, <https://doi.org/10.1002/esp.1798>, 2009.
- 5 Swanson, B. J., Meyer, G. A., and Coonrod, J. E.: Historical channel narrowing along the Rio Grande near Albuquerque, New Mexico in response to peak discharge reductions and engineering: magnitude and uncertainty of change from air photo measurements, *Earth Surface Processes and Landforms*, 36, 885–900, <https://doi.org/10.1002/esp.2119>, 2011.
- Tan, Q. and Xu, X.: Comparative Analysis of Spatial Interpolation Methods: an Experimental Study, *Sensors & Transducers*, 165, 9, 2014.
- Werbylo, K. L., Farnsworth, J. M., Baasch, D. M., and Farrell, P. D.: Investigating the accuracy of photointerpreted
 10 unvegetated channel widths in a braided river system: a Platte River case study, *Geomorphology*, 278, 163–170, <https://doi.org/10.1016/j.geomorph.2016.11.003>, 2017.
- Wheaton, J. M., Brasington, J., Darby, S. E., and Sear, D. A.: Accounting for uncertainty in DEMs from repeat topographic surveys: improved sediment budgets, *Earth Surface Processes and Landforms*, pp. 136–156, <https://doi.org/10.1002/esp.1886>, 2009.
- Winterbottom, S. J.: Medium and short-term channel planform changes on the Rivers Tay and Tummel, Scotland, *Geomorphology*, 34,
 15 195–208, [https://doi.org/10.1016/S0169-555X\(00\)00007-6](https://doi.org/10.1016/S0169-555X(00)00007-6), 2000.

Table 1. Literature review of recent studies quantifying channel lateral migration using P: Channel Polygon method and/or T: Centreline Trajectory method. x: error not assessed. U: use of an uniform error. SV: use of a spatially variable error. The table is sorted by the mean width of the channel(s) studied.

Authors (year)	Lateral migration metric	Delineation error (m)	Geometric error (m)	Channel width (m)	Erosion order of magnitude (m ² /m/yr)
Donovan et al. (2015)	P/T	x	U: 1.0	1-12	/
Hooke and Yorke (2010)	P	U: 1.0	x	15	4.4
Legleiter (2015)	P/T	x	U: 0.8-1.8	10-20	/
Lea and Legleiter (2016)	T	U: 2.0	SV: 0-5	15	/
this study	P	U: 0.5	SV: 0.3-1.9	20	0.6
Sanchis-Ibor et al. (2019)	P	x	U: 1.5	7-40	/
Gurnell et al. (1994)	P	U: 2.0	U: 1.4-4.5	30	0.03
Rhoades et al. (2009)	P	x	U: <1.0	30	0.03
Janes et al. (2017)	P	x	U: 3.5	35	/
Donovan et al. (2019)	T	U: 1.4	SV: 0-10	45	/
Schook et al. (2017)	T	x	U: <1.6	50	/
Morais et al. (2016)	P	x	U: 0.9-3.6	30-80	0.02
Lauer et al. (2017)	T	x	U: 2.3	11.5-107.3	/
Lauer and Parker (2008)	T	x	U: 2.3-6.6	150;50;50;15	/
Lovric and Tosic (2016)	P	x	x	130	5.4
O'Connor et al. (2003)	P/T	x	x	90-240	/

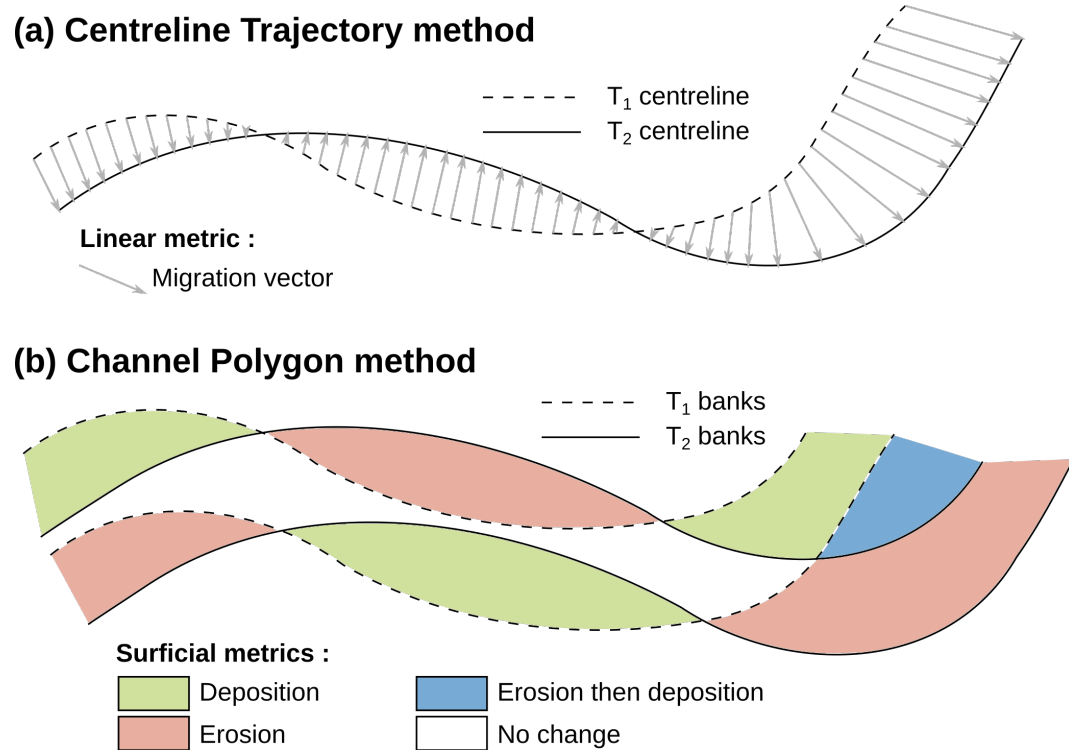


Figure 1. Illustration of the lateral migration metric used (a) by Lea and Legleiter (2016) and Donovan et al. (2019) and (b) in this study.

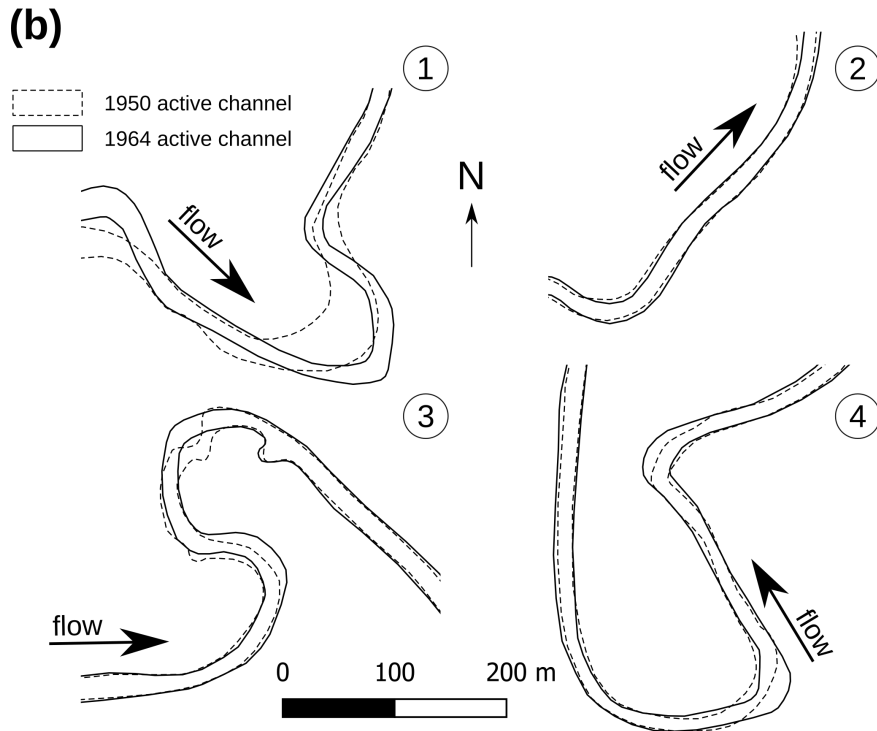
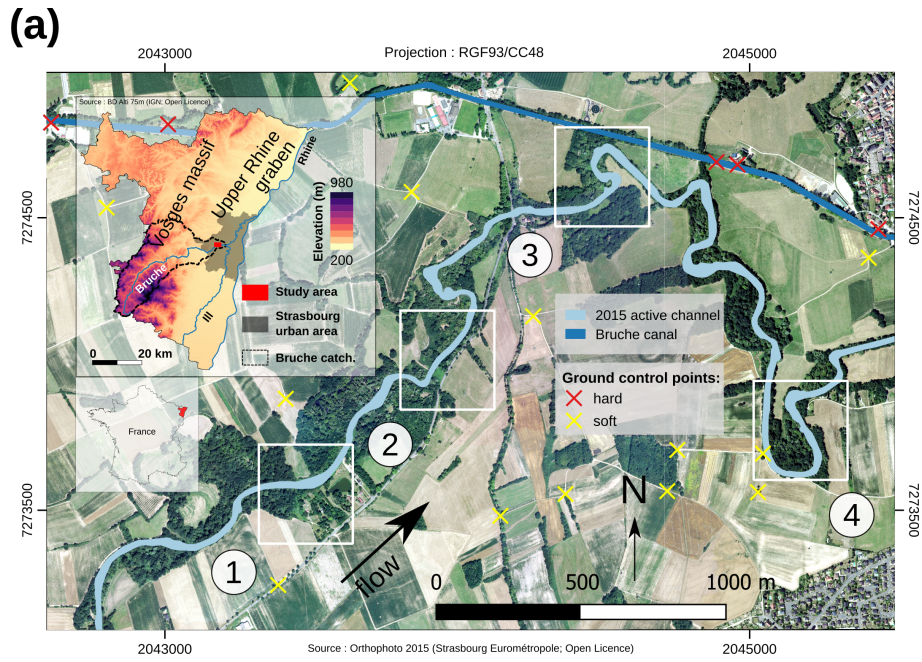


Figure 2. (a) Study area. Localisation of the four sub-reaches in the lowermost Bruche course. Red and yellow crosses indicates the position of the independent set of GCPs used to assess the SV error over the study area. (b) Planimetric evolution of each sub-reach from 1950 to 1964 based on the two orthophotos.

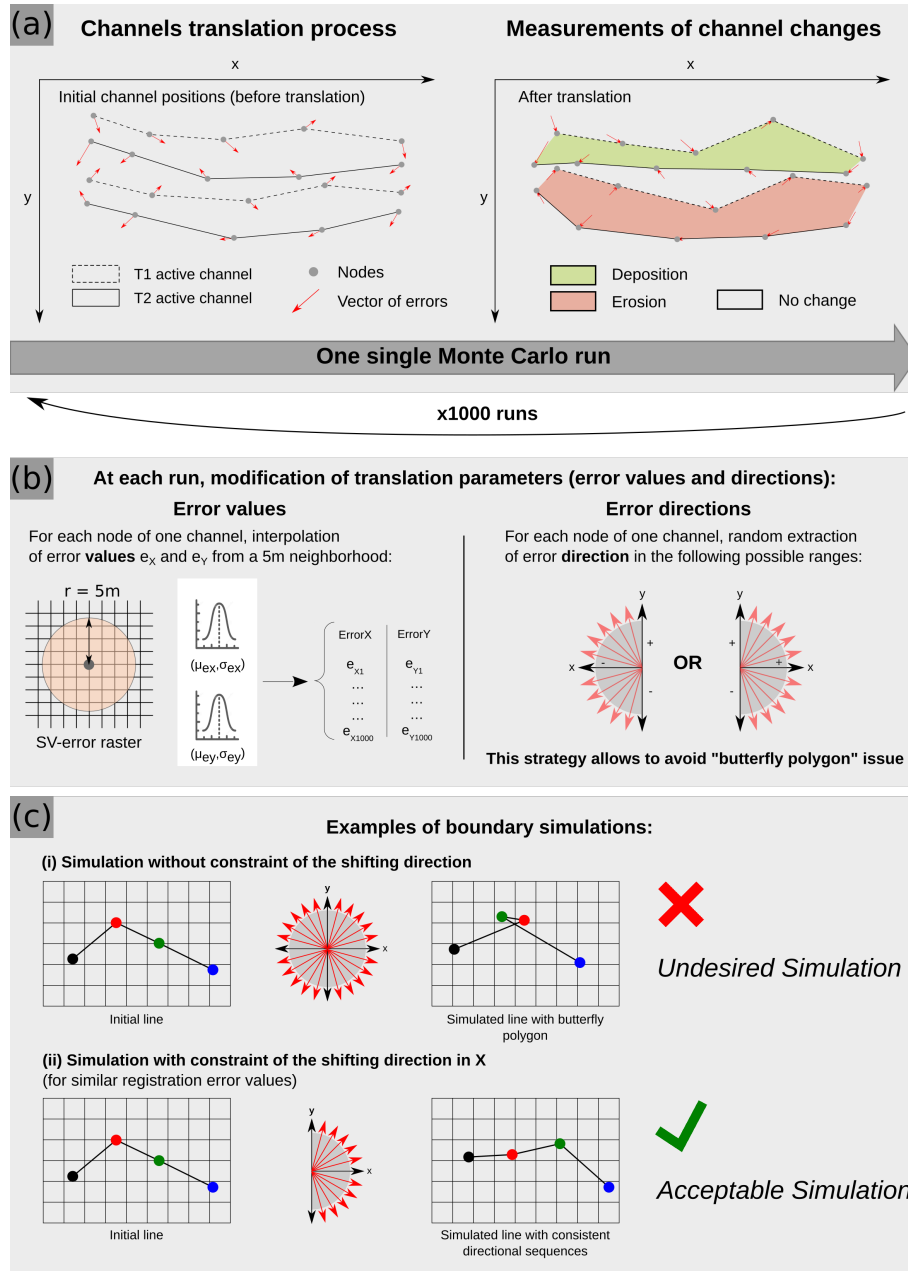


Figure 3. Workflow of the Monte Carlo translation process used in this study. (a) Measurements of channel changes after translation. (b) Translation parameters (error values and directions). (c) Illustration of resulting boundary simulations with and without constraint of the shifting direction.

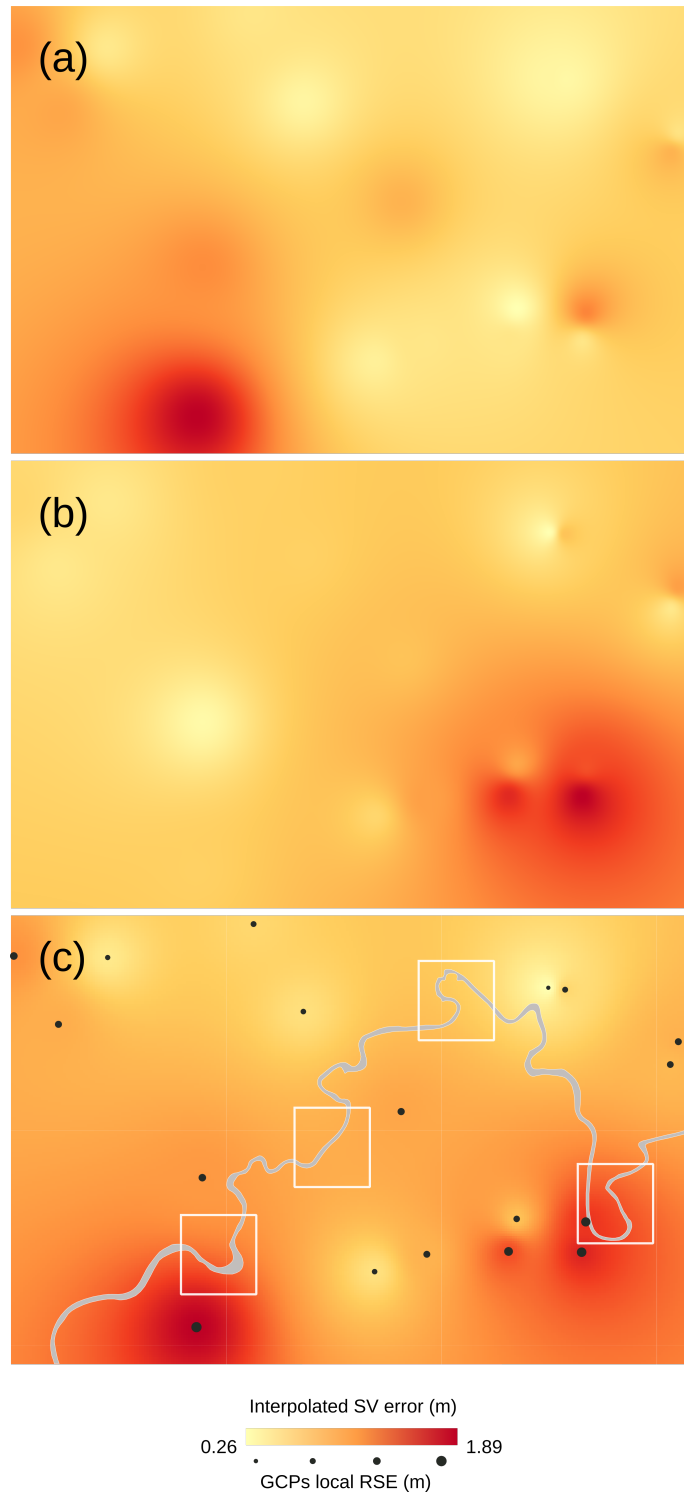


Figure 4. SV error interpolation between GCPs from local RSEs, by IDW method. Year 1950. (a) Error in x. (b) Error in y. (c) Total error.

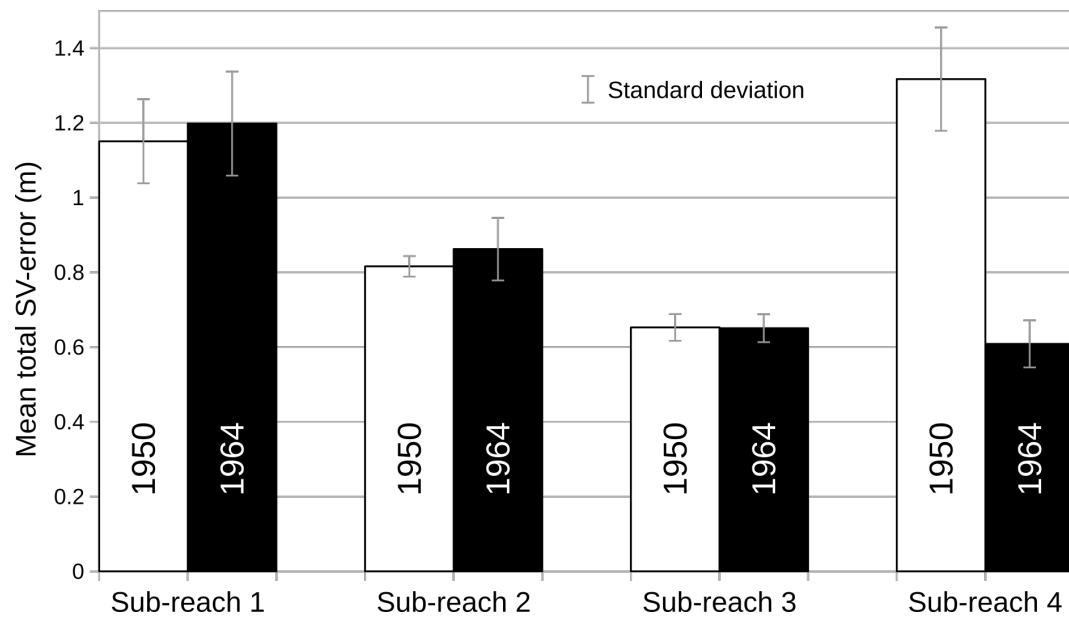


Figure 5. Mean total SV error for each sub-reach, on both dates.

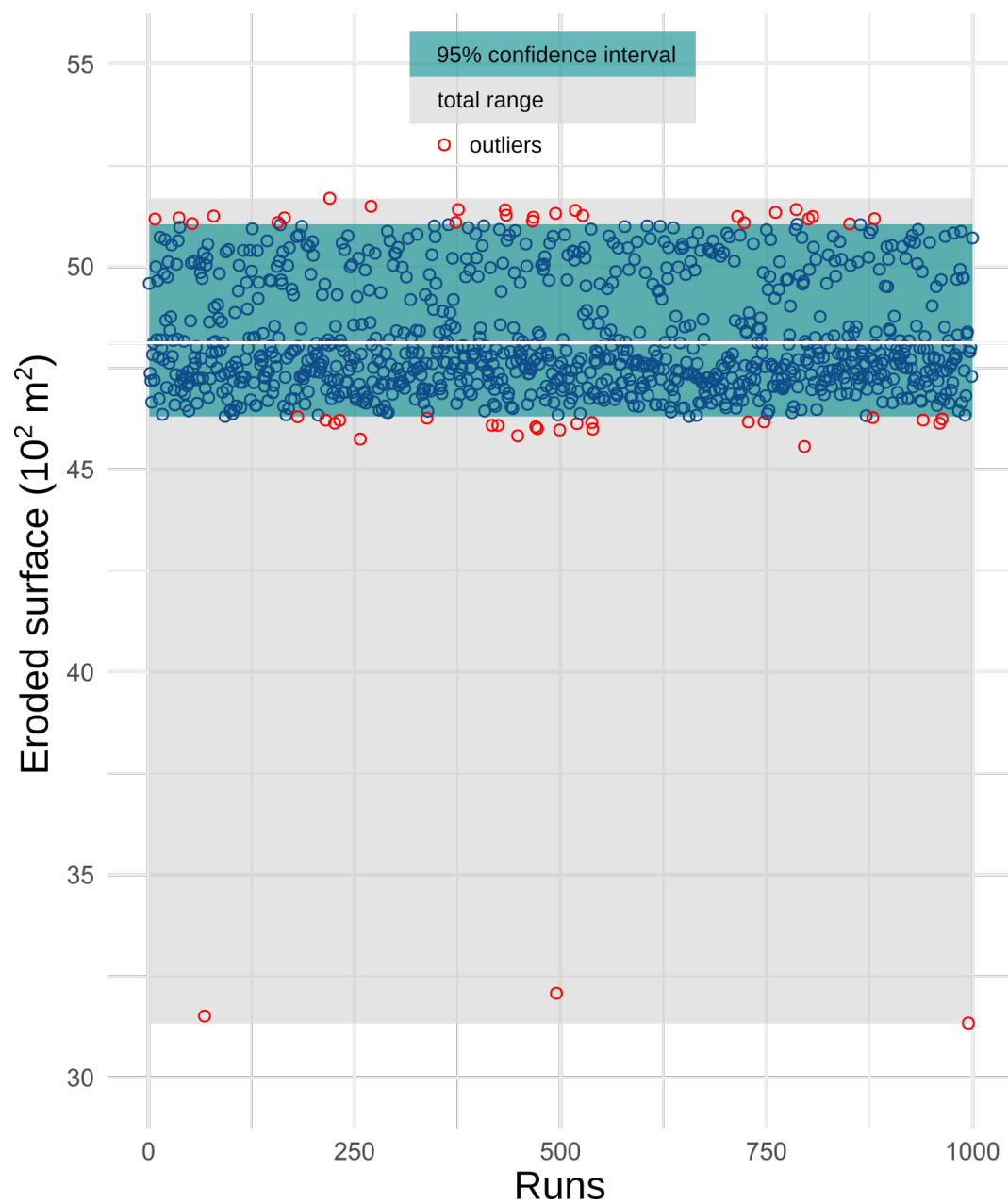


Figure 6. Measurements of eroded surface in sub-reach 1, through 1000 MC simulations. Gray horizontal line corresponds to the mean value.

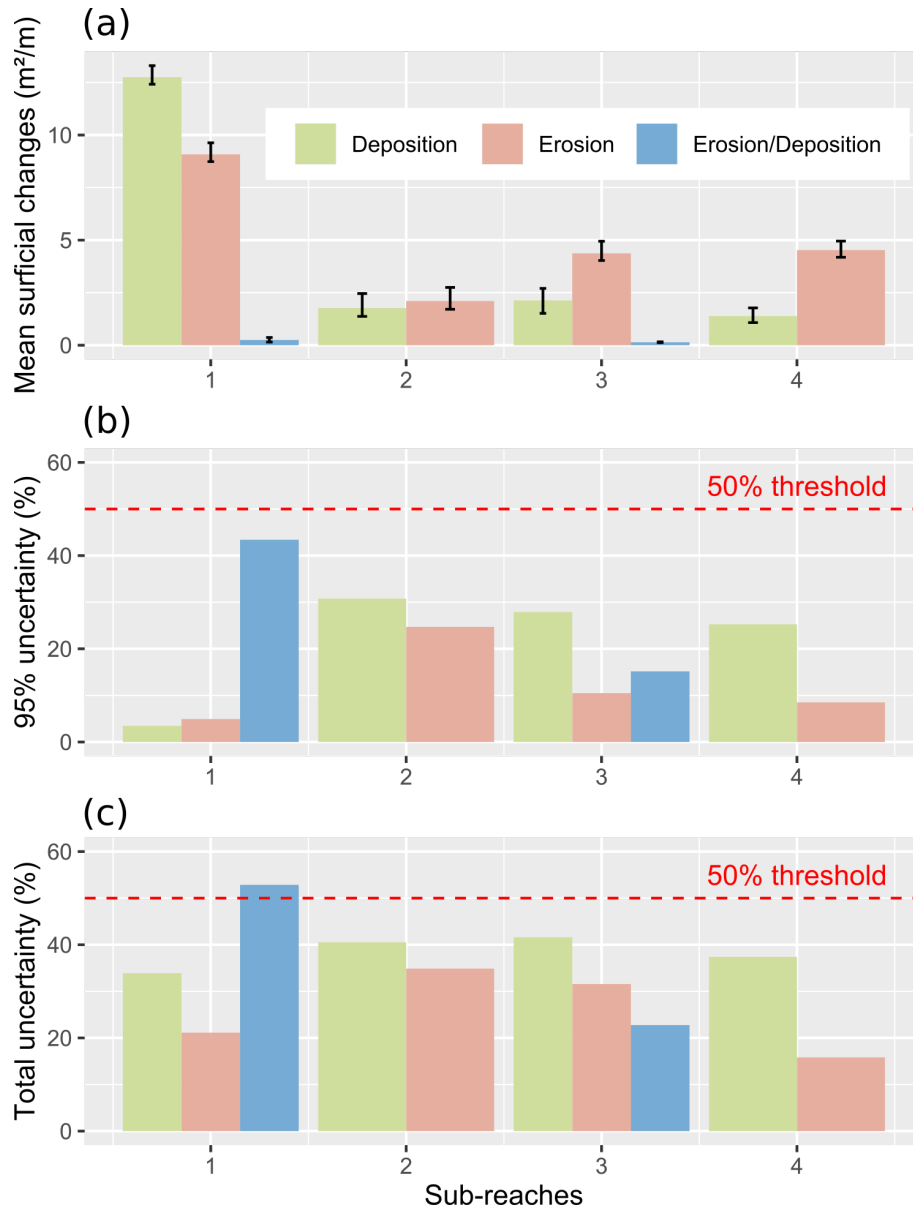


Figure 7. (a) Mean surficial changes normalised by the length of each sub-reach. Error bars correspond to the 95 % confidence interval. (b) 95 % uncertainty percentage (without outliers). (c) Total uncertainty percentage (with outliers). The red dashed line corresponds to the 50 % proposed threshold.

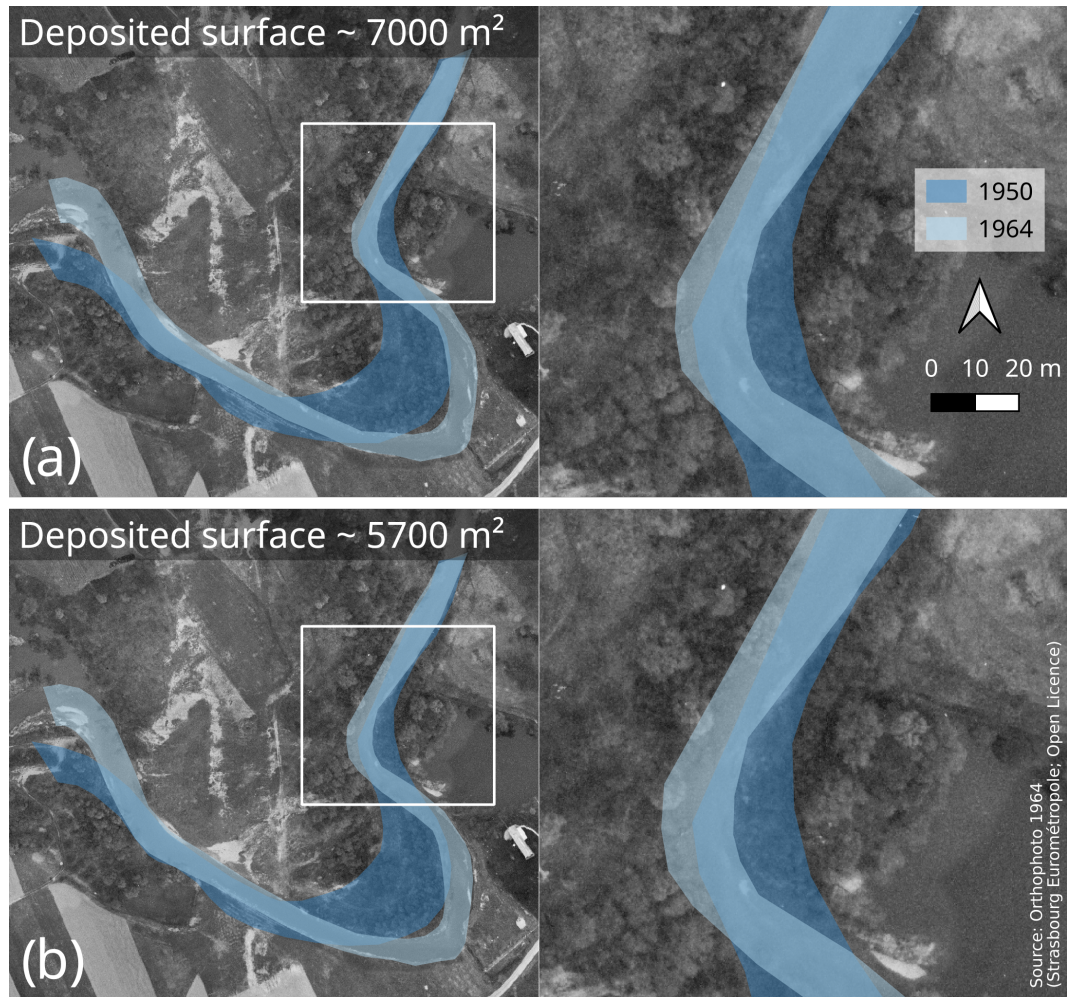


Figure 8. Example of translated channels for sub-reach 1, resulting from two different MC runs. Distinction between an (a) inlier and an (b) outlier according to the simulated deposited surface. Background corresponds to the 1964 orthophoto.

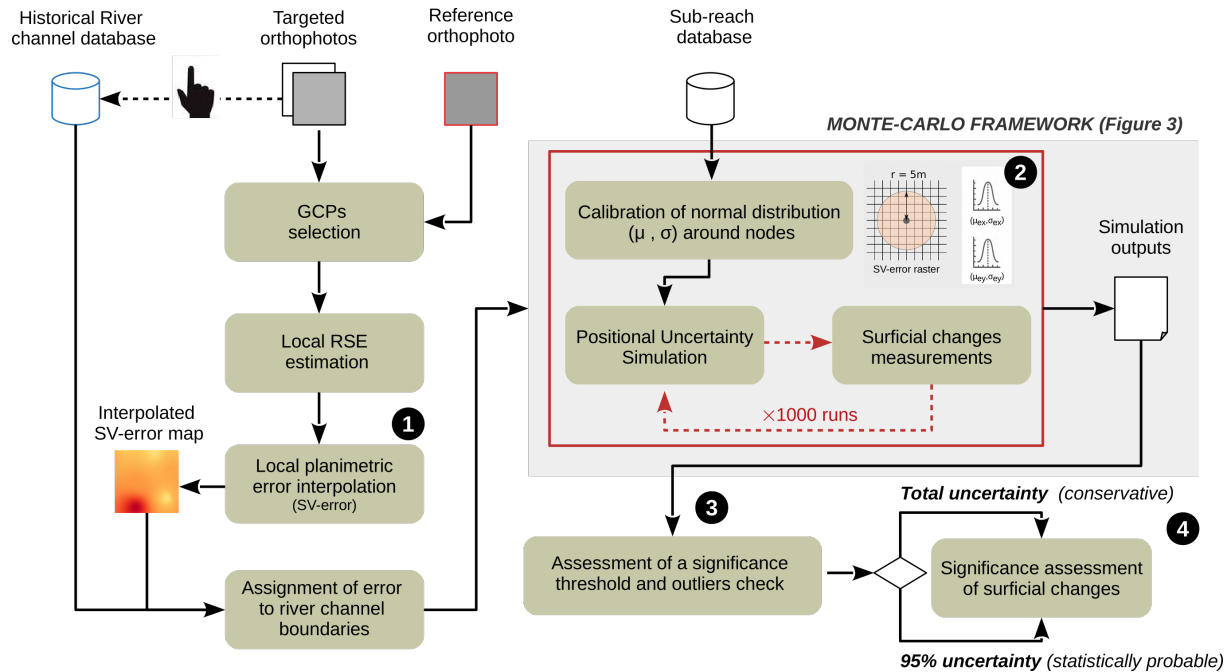


Figure 9. Detailed flow chart of the methodology applied in this study, allowing to assess uncertainty of eroded and/or deposited surfaces using SV error.