

Seismo-acoustic energy partitioning of a powder snow avalanche

Emanuele Marchetti¹, Alec van Herwijnen², Marc Christen², Maria Cristina Silengo¹, and Giulia Barfucci¹

¹Department of Earth Sciences, University of Firenze, Firenze, Italy.

²WSL Institute for Snow and Avalanche Research SLF, Davos, Switzerland.

Correspondence: Emanuele Marchetti (emanuele.marchetti@unifi.it)

Abstract. While flowing downhill, a snow avalanche radiates seismic waves in the ground and infrasonic waves in the atmosphere. Seismic energy is radiated by the dense basal layer flowing above the ground, while infrasound energy is likely radiated by the powder front. However, the mutual energy partitioning is not fully understood. We present infrasonic and seismic array data of a powder snow avalanche, that released on 5 February 2016, in the Dischma valley above Davos, Switzerland. A five element infrasonic array, sensitive above 0.1 Hz, and a seven element seismic array, sensitive above 4.5 Hz, were deployed at short distance (< 500 m) from each other, and close (< 1500 m) to the avalanche path. The avalanche dynamics were modeled by using RAMMS, and characterized in terms of front velocity and flow height. The use of arrays rather than single sensors, allowed us to increase the signal-to-noise ratio, and to identify the event in terms of back-azimuth and apparent velocity of the recorded wave-fields. Wave parameters, derived from array processing, were used to identify the avalanche path and highlight the areas, along the path, where seismic and infrasound energy radiation occurred. The analysis showed that seismic energy is radiated all along the avalanche path, from the initiation to the deposition area, while infrasound is radiated only from a limited sector, where the flow is accelerated and the powder cloud develops. Recorded seismic signal is characterized by scattered back-azimuth, suggesting that seismic energy is likely radiated by multiple sources acting at once. On the contrary, infrasound signal is characterized by a clear variation of back-azimuth and apparent velocity. This indicates that infrasound energy radiation is dominated by a moving point source, likely consistent with the powder cloud. Thanks to such clear wave parameters, infrasound is revealed to be particularly efficient for avalanche detection and path identification. While the infrasound apparent velocity decreases as the flow moves downhill, the seismic apparent velocity is quite scattered, but decreases to sound velocity during the phase of maximum infrasound radiation. This indicates an efficient process of infrasound to seismic energy transition, that, in our case, increases $\approx 20\%$ the recorded seismic amplitude, at least in our frequency band of analysis. Such an effect can be accounted for when avalanche magnitude is estimated from seismic amplitude. Presented results clearly indicate how the process of seismo-acoustic energy radiation by a powder avalanche is very complex, and likely controlled by the powder cloud formation and dynamics, and is hence affected by the path geometry and snow characteristics.

Copyright statement. TEXT

1 Introduction

25 As a first approximation, a powder snow avalanches (PSA) can be described with a two layer model consisting of a dense basal snow layer, with densities of 100-400 kg/m³, and a powder part that develops at the head of the flow, with density of 3-30 kg/m³ (*Issler, 2003*). PSA corresponds to the intermittent regime (IR) identified from GEORADAR analysis at the Vallée del la Sionne test site by *Kohler et al. (2018)*. They are characterized by intense surging activity, flow heights up to 9 m, front velocity up to 60 m/s and develop once snow temperature is always < -2 degrees C. *Carrol et al. (2013)* provided a detailed analytical description of the powder front of a PSA in terms of an eruption current. They showed how the front evolution is mostly controlled by the amount of snow scoured from the snowpack, as the front moves downhill. This erosion depends on the characteristics of the snowpack, such as density, temperature, and channel morphology (see e.g. *Louge et al., 2012; Carrol et al., 2013*). The formation of the powder front is enhanced by the narrowing of the avalanche channel, while the front spreading causes deceleration and consequent collapse of the front. Moreover, *Steinkogler et al. (2014)* showed how the evolution of the powder cloud is affected by the temperature of the snow cover. They showed that the temperature of - 2 degrees C of the scoured snow, is a threshold value, with the cloud formation inhibited for "warm avalanches".

While flowing downhill, the interaction of the dense basal flow with the ground radiates seismic energy (*Sabot et al., 1998*). Infrasound energy is radiated by the compression of the atmosphere produced mostly by the powder front (see e.g. *Schaerer and Salway, 1980; Bedard, 1989*). The ratio between the dense and powder layers of a snow avalanche, and hence between the seismic and infrasound energy radiation, is not constant due to front evolution through time (*Carrol et al., 2013*).

Seismic measurements have been widely applied to investigate avalanche dynamics and characteristics. *Sabot et al. (1998)* showed that slope changes, and the presence of obstacles on the flow path strongly affect the radiation of seismic energy. Moreover, characteristics of recorded seismic signals depend on snow density, avalanche type and size (*Biescas et al., 2003; van Herwijnen and Schweizer, 2011b; Vilajosana et al., 2007b*). Seismic monitoring techniques deploying multiple sensors along the avalanche path (*Biescas et al., 2003; Vilajosana et al., 2007a*) or arrays (*van Herwijnen and Schweizer, 2011a; Lacroix et al., 2012; Heck et al., 2017*), allow identification of the avalanche occurrence within a source-to-receiver distance up to ≈ 3 km. *Hammer et al. (2017)* recorded very large avalanches up to 30 km away.

After the pioneer study by *Bedard (1989)*, the use of the infrasound in avalanche monitoring and research has increased significantly (*Chritin et al., 1996; Adam et al., 1998; Comey and Mendenhall, 2004*). *Naugolnykh and Bedard (1990)* suggested that infrasound is possibly induced by the non-stationary motion and/or by the turbulence of the flow. Moreover, they suggested that the amplitude and frequency of the recorded infrasound signals should scale with the avalanche size and velocity.

Since then, infrasound avalanche observations improved substantially, both in number and accuracy. The development and use of infrasound arrays instead of single sensors (*Scott et al., 2007; Ulivieri et al., 2011; Havens et al., 2014; Marchetti et al., 2015*), allows for an increased signal-to-noise ratio and improves the investigation of the avalanche infrasound signature. Specific wave parameters (back-azimuth and apparent velocity) of recorded signals were used to define array processing procedures, able to detect medium size snow avalanches at distances of a few kilometers (*Ulivieri et al., 2011; Marchetti et al.,*

2015; Mayer *et al.*, 2018). Moreover, infrasound array derived information was used to remotely evaluate the avalanche front position and velocity through time (Marchetti *et al.*, 2015; Havens *et al.*, 2014).

60 While geophysical observations of snow avalanches have significantly improved the monitoring techniques, a robust conceptual model of seismic and infrasound energy radiation is still missing. Previous studies based on infrasound and seismic records allowed for the investigation of some mutual characteristics (Surinach *et al.*, 2001; Kogelnig *et al.*, 2011). Kogelnig *et al.* (2011), in particular, analyzed 4 avalanches at the Vallée de la Sionne test site, and showed that infrasound and seismic energy and amplitude were roughly correlated to the extent of aerosol and dense layer, respectively. Moreover, they modeled the infrasound energy radiation in terms of a moving turbulent sound source, where the infrasound amplitude is modeled as
65 proportional to the flow speed and height of the powder cloud. However, many open questions remain with regard of using infrasound and seismic signals to infer avalanche size. It is well known that seismic and infrasound energy interact at the earth free surface and are transmitted between the atmosphere and solid earth (Ichihara *et al.*, 2012). The transmission affects the amplitude of recorded signal and should be considered when signal characteristics are used to constrain the source process or to calculate the energy of the event.

70 In this work, we present a combined seismic and infrasound array analysis for a snow slab avalanche that occurred on 5 February 2016, in the Dischma Valley, south of Davos, Switzerland. The event was recorded by a seismic and an infrasound array located nearby (less than 1500 m) the path. The data obtained from the seismic and the infrasound array are used to investigate the mutual energy radiation as a function of the front position along the avalanche path. To investigate the properties of recorded signals as a function of event characteristics, the avalanche was modeled using the avalanche simulation software
75 RAMMS (Christen *et al.*, 2010) .

2 Study site, instrumentation and data

During the winter of 2015-2016 a seismic and an infrasound array were colocated, at short distance (< 500 m) from each other, in the Dischma valley, south of Davos, in the Eastern Swiss Alps (Figure 1). The installation site is a flat area, at an elevation of ≈ 2000 m a.s.l. surrounded by peaks rising up to ≈ 3000 m. On Feb. 5, 2016, a snow slab avalanche released from Chlein
80 Sattelhorn, and was recorded both by the seismic and the infrasound array (Figure 1, Figure 2a).

The seismic array (Seismic Instruments Inc.) consisted of 7 elements deployed with a circular geometry and maximum aperture (maximum distance between 2 array elements) of 75 m (Figure 1b). The array was equipped with vertical geophones with a corner frequency of 4.5 Hz and a sensitivity of 28.8 V/m/s. The geophones were attached with anchors to large rocks on the ground and subsequently buried by snow, which substantially reduced the effect of wind noise. Seismic data were sampled
85 at each geophone at 500 Hz and 24 bits precision. Data were recorded locally at the central acquisition system. The entire system was powered with solar panels and batteries, and the total power requirement was approximately 7 W.

The infrasound array (FIBRA; www.item-geophysics.it) operated with fiber optic connection among the 5 different array elements. The fiber optic connection allows to increase significantly the signal to noise ratio, and prevents the risk of damage related to lightning or electric discharges. The array was deployed following a triangular geometry, with two central elements,

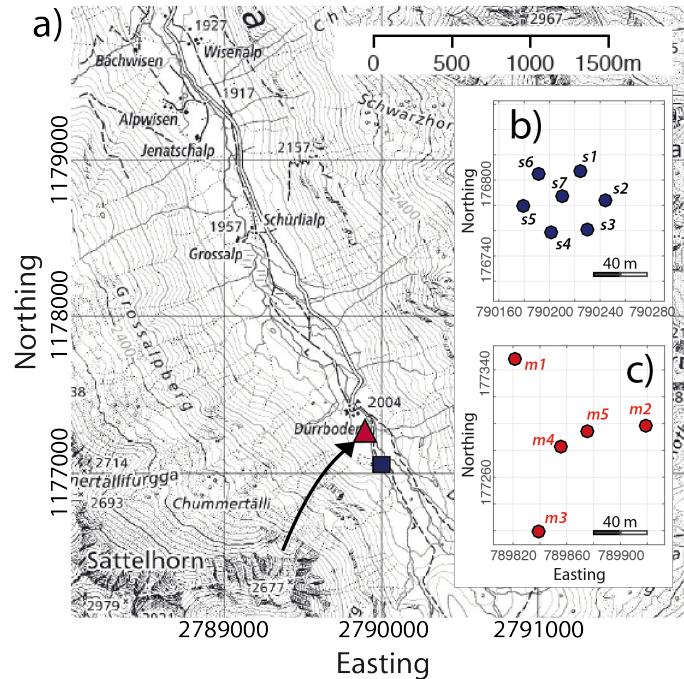


Figure 1. Map (a) showing the location of the Dischma valley, south of Davos, Switzerland. The location of the infrasound array (red triangle) and the seismic array (white square) are shown, as well as the Chlein Sattelhorn avalanche path (black arrow). Positions are given in Swiss coordinates (CH1903). Reproduced by permission of swisstopo (JA100118). Details of the geometry of the seismic (b) and infrasound arrays (c).

90 and had a maximum aperture of 160 m (Figure 1c). Each array element was equipped with a differential pressure transducer (prs025a), with a sensitivity of 400 mV/Pa in the pressure range of ± 12.5 Pa, and a frequency response between 0.01 and 200 Hz. Analogue pressure data were converted to digital signals at each array element, with a sampling rate of 50 Hz and 16 bits dynamics, and were transmitted through fiber optic to a central unit, where data were synchronized with GPS timing. Power requirement was ≈ 1 W for the central unit and as low as ≈ 0.1 W for the array element.

95 The data recorded by the two arrays were synchronized by comparing the timing of local and regional earthquakes recorded by both arrays. Considering a propagation velocity < 2000 m/s and a distance of < 500 m between the two arrays, such an approach guarantees a timing accuracy of < 2 seconds, which is sufficient for the seismo-acoustic comparison presented here.

The study site was also equipped with automatic cameras collecting images every ten minutes, used to visually monitor the activity on the slopes surrounding the arrays. The camera system was collocated with the central element of the infrasound
 100 array.

In the morning of 5 February 2016, at 05:18 UT, a medium sized dry-snow avalanche released from Chlein Sattelhorn (Figure 2b), at an elevation of ≈ 2600 m. The avalanche traveled a distance of 1200 meters and stopped at the bottom of the Dischma valley, at an elevation of ≈ 2030 m at a short distance (< 100 m) from the infrasound array (Figure 3). The event occurred

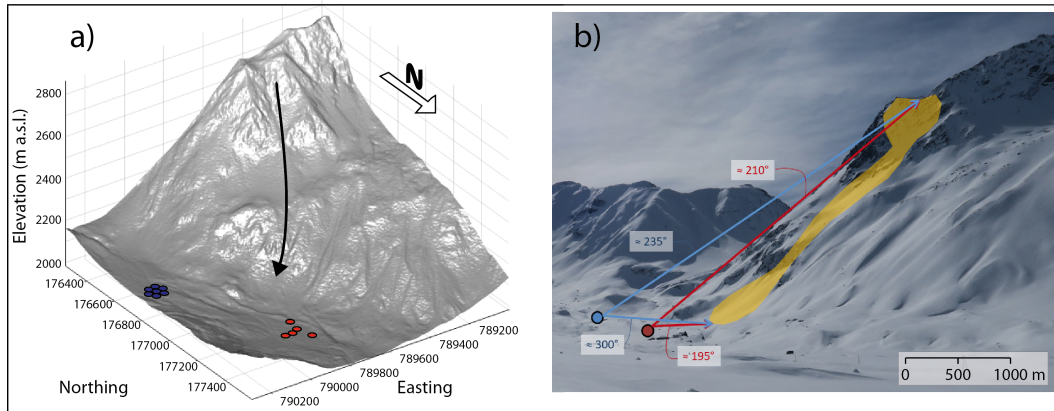


Figure 2. (a) Digital Elevation Model showing the installation site within the Dischma valley, south of Davos, Switzerland, with the position of the seismic array (blue dots), the infrasound array (red dots) and the Chlein Sattelhorn avalanche path (black arrow). (b) Photo of the field site with the position of the seismic array (blue dot), the infrasound array (red dot) and the approximate contour of the Chlein Sattelhorn avalanche from 5 February 2016 (orange). The approximate backazimuth angles to the start zone and maximum runout zone of the avalanche relative to the seismic and infrasound array are also shown (colored arrows).

during a snow storm. Nevertheless, based on the images from the automatic cameras we confirmed that the avalanche released
 105 between 4 February 2016 at 17:40 UT and 6 February 2016 at 07:40 UT. The avalanche deposit was first clearly visible on the morning of Feb. 6 (08:30 UT), when the weather cleared (Figure 3b).

The event from 5 February 2016 was clearly recorded by the seismic and infrasound arrays (Figure 4a, b) (Marchetti *et al.*, 2020). The seismic signal has an emergent waveform and a duration of ≈ 60 s. It is characterized by two phases of similar amplitude ($1.5 \cdot 10^{-6}$ m/s), peaking around 05:18:50 and 05:19:20 UT. The signal spectrum shows energy mostly confined
 110 between 3.5 and 12 Hz, with the peak frequency around 6 Hz. The frequency response of the geophones limits the spectral analysis to frequencies > 4.5 Hz (Figure 4c), therefore we cannot exclude lower frequency components. The infrasound record of the event is shorter (≈ 45 sec), has a similar emergent waveform, with two separate phases reaching a maximum amplitude of ≈ 0.5 Pa (Figure 4b). The spectral energy of the infrasound signal is wider, spanning between 0.5 and 8 Hz, with a clear peak at ≈ 3.3 Hz (Figure 4c).

115 3 Methods

The infrasound and seismic data were processed using a multichannel correlation analysis, to identify signal from noise in terms of signal back-azimuth and apparent velocity. The procedure, described in detail by Ulivieri *et al.* (2011), identifies coherent data recorded within a given time window assuming planar wavefront propagation. Once a coherent signal is identified, based on signal correlation threshold ($> 70\%$), the corresponding back-azimuth (*Back*) is calculated. The back-azimuth corresponds
 120 to the propagation angle from the array to the source, measured with respect to the geographic North in the horizontal plane of

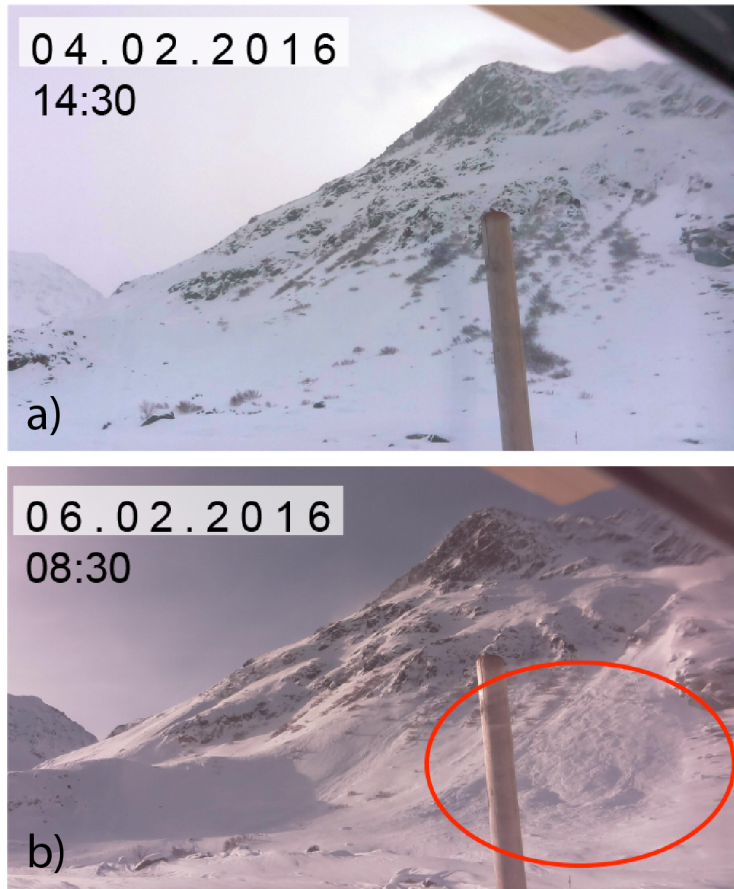


Figure 3. Picture showing the slope west from the infrasound array in the afternoon of February, 2nd (a, last clear image before the event) and in the morning of February, 6th, 2016 (b, first clear image after the event) that shows the avalanche accumulation area.

the array. Once the back-azimuth is identified, the apparent velocity (c_a) is calculated, as the ratio between the real propagation velocity (c) and the sine of the take off angle ($c_a = c / \sin \theta$). The apparent velocity corresponds to the velocity the wave would have if it was traveling in the plane of the array, and increases for higher elevation sources. It would be infinite for a source located directly above the array, as all the elements of the array would record the signal simultaneously.

125 In the specific case of snow avalanches, i.e. a source moving downhill, the apparent velocity is expected to decrease with time (Marchetti *et al.*, 2015). Similarly, depending on the movement of the avalanche relative to the array, the back-azimuth is expected to change with time. This aspect has been used to identify snow avalanches from other sources with infrasound array analysis, allowing for real-time monitoring and identification of snow avalanches at source-to-receiver distances of several km (Marchetti *et al.*, 2015; Ulivieri *et al.*, 2011; Mayer *et al.*, 2018).

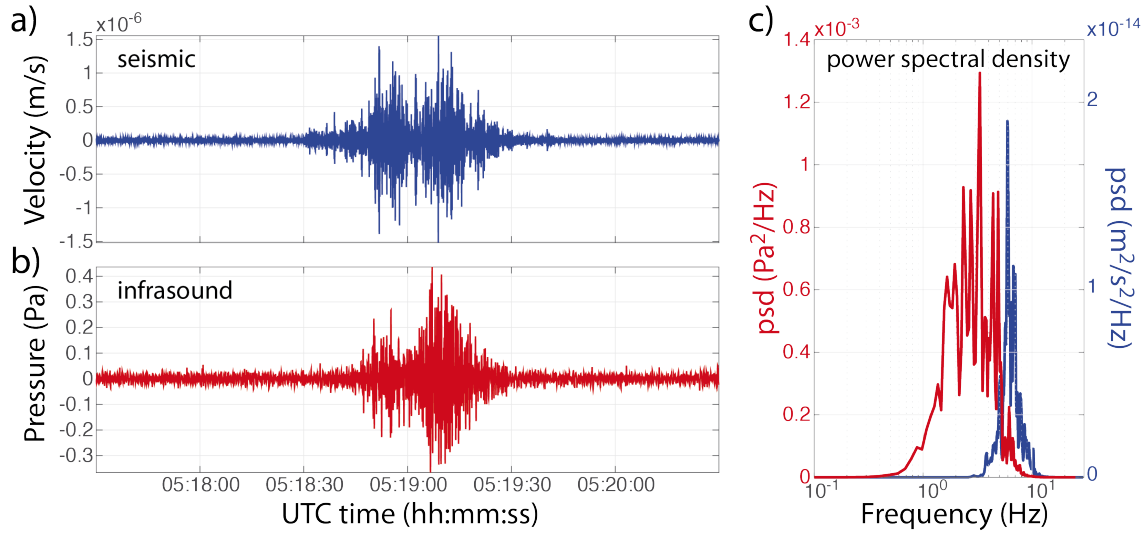


Figure 4. Seismic (a) and infrasound (b) signal of the avalanche that occurred on 05 February 2016 recorded by sensor s3 of the seismic array and by sensor m3 of the infrasound array (Figure 1b, c) . c) Power Spectral Density (psd) of the seismic (blue) and infrasound signal (red).

130 Following the approach described by *Marchetti et al. (2015)*, we use the back-azimuth and the apparent velocity of the seismic and the infrasound detections to investigate the position along the avalanche path considering a point source, where the different portions of the signals are generated. For each point of the DEM, we calculate the corresponding values of back-azimuth from the seismic (Baz_s) and infrasound (Baz_i) arrays, and the expected values of apparent velocity (c_a) of the recorded infrasound wavefield (Figure 5). We obtain a map of theoretical values, showing the expected values for the seismic and infrasound wave parameters produced by any point source located on the DEM. A point source moving along any path on the topography would therefore be recorded with values of back-azimuth and apparent velocity, varying according to the theoretical values.

The back-azimuth provides an estimate of the source position in the horizontal plane defined by the array, while apparent velocity is reflecting the source elevation. As expected, the map shows that the back-azimuth varies between 0 and 360 degrees around the seismic and infrasound arrays (Figure 5a, b), independently of the elevation and the distance from the array. The infrasound apparent velocity changes, according to the local topography, from a minimum of 330 m/s up to a maximum value of 400 m/s (Figure 5c), solely affected by the distance from the array and the absolute elevation. Therefore, a proxy of the 3d source position requires combining back-azimuth and apparent velocity. We account simultaneously for back-azimuth and apparent velocity by calculating for each point of the DEM the product ($BV = Baz_i \times c_a$) of theoretical values (Figure 5d).

145 The resulting parameter defines a new map, with values depending from both the planar position and source elevation. Such an approach can be easily applied to infrasound wave parameters, while the use of the apparent velocity derived for the seismic wavefield appears complicated by variable phases and complex source-to-receiver travel paths.

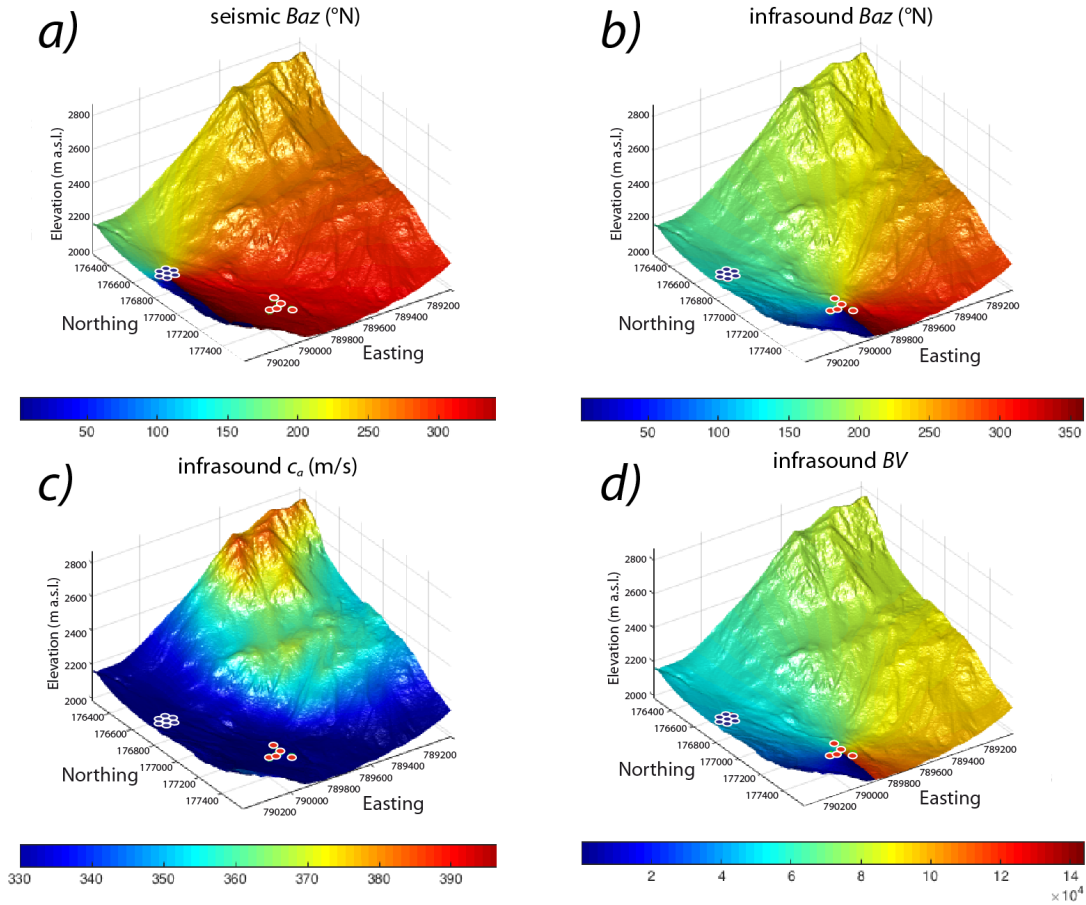


Figure 5. Theoretical values of back-azimuth at the seismic array (Baz_s (degrees N), a), back-azimuth (Baz_i (degrees N), b) and apparent velocity (c_a (m/s), c) at the infrasound array for any point source of seismic and infrasound energy located on the DEM. Product between back-azimuth and apparent velocity of infrasound wavefield (BV , d). The position of the infrasound and seismic arrays are shown by red and blue circles respectively.

In order to correlate the infrasound and seismic wave parameters with avalanche flow characteristics and evolution (flow depth and velocity), we performed flow modeling by using RAMMS (Figure 8) (Christen *et al.*, 2010). We used RAMMS::Avalanche
 150 (version 1.7.20) for the simulations of Chlein Sattelhorn. The model requires a detailed digital elevation model as well as an estimate of the initial release volume, i.e. an initial release area and a fracture depth. The initial digital elevation model (DEM) is the swissAlti3D DEM (2 m grid resolution). For the simulation, we did a bilinear interpolation to 5 m. We used calibrated friction values for small avalanches, with a return period of 10 years and modeled flow depth and flow velocity along the flow channel trough time with a time lapse of 2 seconds.

For the avalanche recorded on 5 February 2016, the multichannel correlation analysis was performed over time windows of 5 seconds, and with an overlap of 4.5 seconds, both for the seismic and for the infrasound data. According to the recorded frequency spectrum (Figure 4c), infrasound and seismic data were bandpass filtered between 1 and 10 Hz. The event then appears as a cluster of detections (Figure 6), each associated with a corresponding value of back-azimuth (Baz) and apparent velocity (c_a), calculated for each signal time window. From Figure 6, infrasound signal starts to be detected at 05:18:50 UTC, with a back-azimuth of 211 degrees N and an apparent velocity of 365 m/s. The apparent velocity decreases monotonically to 327 m/s, until 05:19:15, while the back-azimuth remains quite stable for the first 15 seconds of the recorded signal, until 05:19:05, and decreases down to 200 degrees N afterwards. Such a variation of apparent velocity and back-azimuth is consistent with the path followed by the observed event, that moves initially North/North-West towards the array (20 degrees N, back-azimuth from the array 210 degrees N), to turn clockwise along the path when the flow moves downhill (Figure 3). Between 05:19:15 and 05:19:25 UTC, the back-azimuth is quite stable, while the apparent velocity increases up to ≈ 350 m/s. We interpret this variation as an artefact, resulting from the short distance between the accumulation area and the array (< 200 m), thereby violating the planar wavefront assumption.

Unlike infrasound, that has a duration of ≈ 45 seconds and is marked by a clear variation of wave parameters (back-azimuth and apparent velocity), the seismic signal radiated by the event is much longer in duration (≈ 60 sec), and changes in wave parameters are less clear. The first seismic detections were recorded around 05:18:40, ≈ 10 seconds before the first infrasound detection, with a back-azimuth values between 220 and 250 degrees, corresponding reasonably well with the release area of the snow avalanches (Figure 1). During the following 20 seconds we observe a general migration of the seismic back-azimuth, up to ≈ 270 -300 degrees N at 05:19:00 UT, corresponding to the runout area. Afterwards, the seismic back-azimuth remains rather stable until the end of the event at 05:19:45 UT.

The results of infrasound and seismic array processing presented in Figure 6, allow us to describe the mutual infrasound and seismic energy radiation during the avalanche. Just considering the event duration, it is clear from Figure 6, that the avalanche initiation phase is radiating seismic energy in the ground, while no or minor infrasound is radiated into the atmosphere. This is likely related to the first stage of the event, whilst the powder front is not developed yet. Only 20-25 seconds after the avalanche onset, once the flow accelerates (Marchetti *et al.*, 2020), infrasound starts to be radiated by a source that is moving downhill along the avalanche path, as tracked by the infrasound wave parameters (back-azimuth and apparent velocity, Figure 6c, e).

In order to calculate the portion of the avalanche path where seismic and infrasound energies are radiated, we performed a blind search to minimize the difference between wave parameters (Baz_s , Baz_i , c_a and BV) calculated for the seismic and infrasound detections (Figure 6) and the theoretical values calculated for the DEM (Figure 5). Figure (7) shows all the possible source points along the DEM based on the seismic back-azimuth (Figure 7a), the infrasound back-azimuth alone (Figure 7b), the infrasound apparent velocity intersected with back-azimuth (Figure 7c) and their product intersected both with back-azimuth and apparent velocity (Figure 7d). The dark-red areas highlighting all the points of the DEM satisfying a minimum difference threshold. This is fixed into 1 degree for seismic (Baz_s) and infrasound (Baz_i) back-azimuths, 1 m/s for

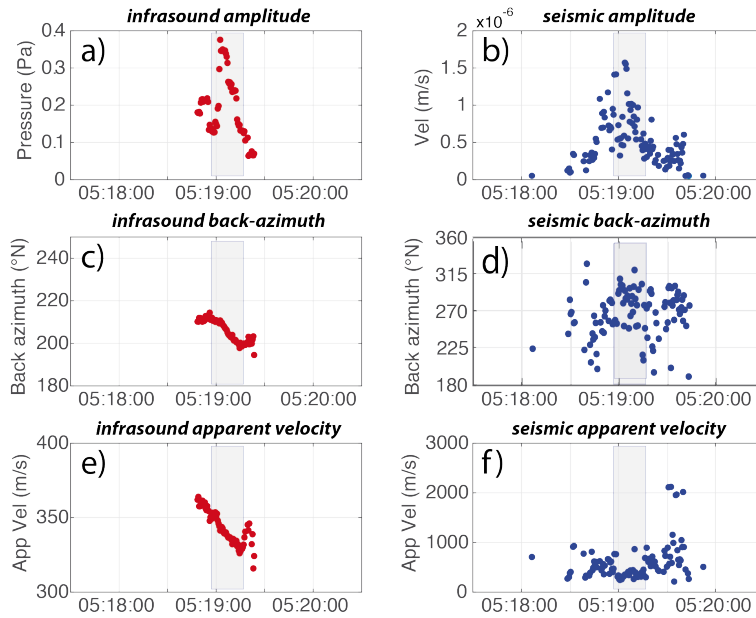


Figure 6. Amplitude, back-azimuth and apparent velocity of infrasound (a,c and e, respectively) and seismic (b,d and f, respectively) detections for the avalanche of 5 February 2016. The shaded area highlights the time window of sound propagation velocity recorded for the seismic signal.

apparent velocity (c_a) and 500 for their product (BV). Given the absolute value of Baz_i (1-360 degrees) and c_a (330-400 m/s),
 190 such an experimental value accounts for a limited (< 1 degree or 1 m/s) variation of one single parameter at once. Figure 7
 shows that, considering only one parameter at once, only a limited information on the source radiation area can be deduced,
 without additional constraints regarding the avalanche path. Such an approach, was applied successfully in previous studies
 that evaluated the avalanche velocity from infrasound detections (*Havens et al., 2014; Marchetti et al., 2015*), but limits the
 analysis to a single avalanche path.

195 Considering the seismic back-azimuth (Baz_s , Figure 7a) only, the detections do not provide any constraint on the source
 position, as they are consistent with many different directions around the array spanning between 200 and 325 degrees N.
 However, if we assume that the seismic source is confined within the avalanche path (Figure 2a), it appears that the seismic
 energy is radiated from the detachment point to the depositional area. Moreover, the scattered values of the back-azimuth of
 the recorded seismic signals, suggest that multiple sources of seismic energy are active at the same time in different sectors of
 200 the avalanche path.

The relative position of the avalanche path and the infrasound array influences the efficiency of the infrasound back-azimuth
 to identify the source position along the path. Considering the infrasound back-azimuth alone (Baz_i , Figure 7b), the back-
 projection of infrasound detections to the topography does not allow us to constrain the position of the source along the path.
 The infrasound apparent velocity constrains the source elevation (c_a , Figure 7c). The maximum value of the apparent velocity

205 of 364 m/s (Figure 6) limits the energy radiation to the lowest part of the avalanche path, clearly suggesting that no, or minor, infrasound is produced high up in the path during the initiation phase. This conclusion is confirmed by the blind search of the infrasound energy radiation area, based on the combination of back-azimuth and apparent velocity (BV , Figure 7d). Here, the minimization of residuals between theoretical and measured values, highlights a limited area on the entire DEM, from the base of the starting zone, where the avalanche accelerates and follows the channel down to the valley.

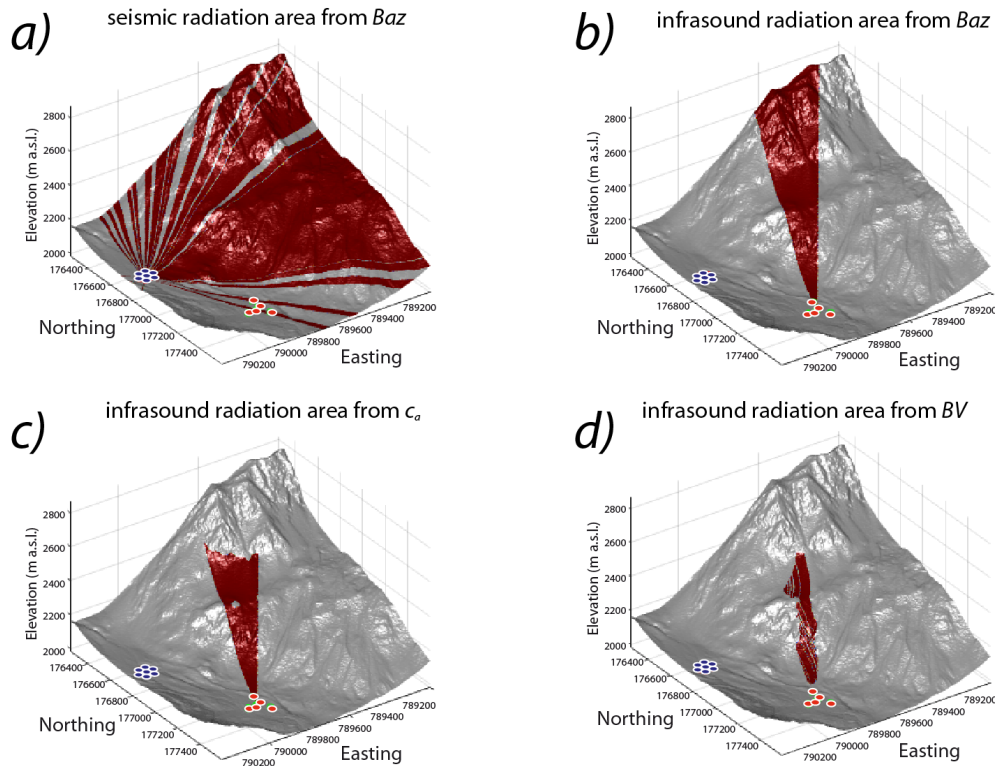


Figure 7. Possible radiation areas (dark red) of seismic and infrasound energy, obtained from seismic back-azimuth (Baz_s , a), infrasound back-azimuth (Baz_i , b), infrasound apparent velocity (c_a , c) and the combination of infrasound back-azimuth and apparent velocity (BV , d). Position of the seismic array is shown by blue circles, while the one of the infrasound array is shown by red circles.

210 In order to investigate the recorded seismic and infrasound signals in terms of avalanche dynamics, we performed RAMMS modeling of the flow evolution (Figure 8). Based on field observations and on typical snow profile characteristics at the time of the event, we assumed a release volume of $9.525 m^3$, with release depth of 80 cm. The modeled flow depth evolution (Marchetti et al., 2020), predicts a total flow duration of ≈ 90 seconds, with ≈ 60 seconds required for the avalanche to initiate, accelerate, and reach the valley bottom, followed by ≈ 30 seconds of snow deposition.

215 Since the path geometry is characterized by a sharp terrain break at an elevation of approximately 2300 m (Figure 8c), the modeled avalanche accelerated along the release area where slopes exceed 35 degrees, then rapidly decelerated and lost mass at the terrain break (Figure 8d). The modeled avalanche then accelerated again after entering a steep (slope > 30 degrees), narrow channel (< 50 m), within the lowest part of the path. Finally, the flow slowed down when it reached the valley bottom at an elevation of \approx 2030 m (Figures 2,8), where the snow mass was spread out horizontally on the runout area. RAMMS
220 predicted a maximum flow depth of almost 3.5 m, that was reached after a travel distance of \approx 200 m along the path. The maximum front velocity, of \approx 35 m/s, was reached at the end of the first, and highest, part of the path, before the deceleration at the terrain break (Figure 8). Lower values of front velocity and flow depth result from the model below the terrain break. The modeled snow avalanche qualitatively compared well to the information we obtained from the images from the automatic cameras (Figure 2b).

225 The flow evolution modeled by RAMMS (Figure 8) appears to be consisted with the two distinct phases observed both for the seismic and infrasound signal. These two phases appear to be controlled by the path geometry forcing the avalanche to slow down and lose mass at the terrain break at an elevation of 2300 m.

5 Discussion

The clear variation of the back-azimuth and apparent velocity of the recorded infrasound signals provides a strong constraint on
230 the source mechanism of infrasound energy. The comparison of infrasound radiation area (Figure 7d) with RAMMS modeling (Figure 8), clearly shows that infrasound is radiated when the flow is accelerated within the channel. This is in agreement with the hypothesis that infrasound is produced by the powder cloud and with the dynamical evolution of a PSA in terms of an eruption current (Carrol *et al.*, 2013). They showed that the powder cloud formation is strongly enhanced by the narrowing of the avalanche path, while it is reduced by the path spreading in the initiation and deposition area.

235 As discussed in detail by Marchetti *et al.* (2015), in case of multiple sources, the array analysis identifies the most energetic source. Therefore, being able to detect and track one predominant source (Figure 6c,e), moving downhill with time, we suggest that snow avalanches are characterized by a dominant source of infrasound energy, allowing the source mechanism of infrasound to be treated as a point source moving downhill. This is very different from other density currents, like debris flows, where recorded infrasound is lacking a clear correlation thus limiting the efficiency of array processing procedures (Marchetti *et al.*,
240 2020). Differently from infrasound, the scattered back-azimuth of seismic detections (Figure 6d) suggests that seismic signals are most likely produced by multiple sources, or by an elongated source, acting along the path at the same time (Figure 6d,f).

Previous studies (Surinach *et al.*, 2001; Vilajosana *et al.*, 2007b) showed that seismic signals produced by snow avalanches mostly consist of surface waves. They assumed that the seismic energy was radiated mostly by the basal friction and snow ploughing at the avalanche front (Vilajosana *et al.*, 2007b, and references therein). The seismic energy was calculated account-
245 ing for geometrical spreading and attenuation of surface waves along the front-to receiver distance. Any possible contribution from multiple sources along the path or by an elongated source were not considered. This could lead to an underestimation of the total seismic energy of the event.

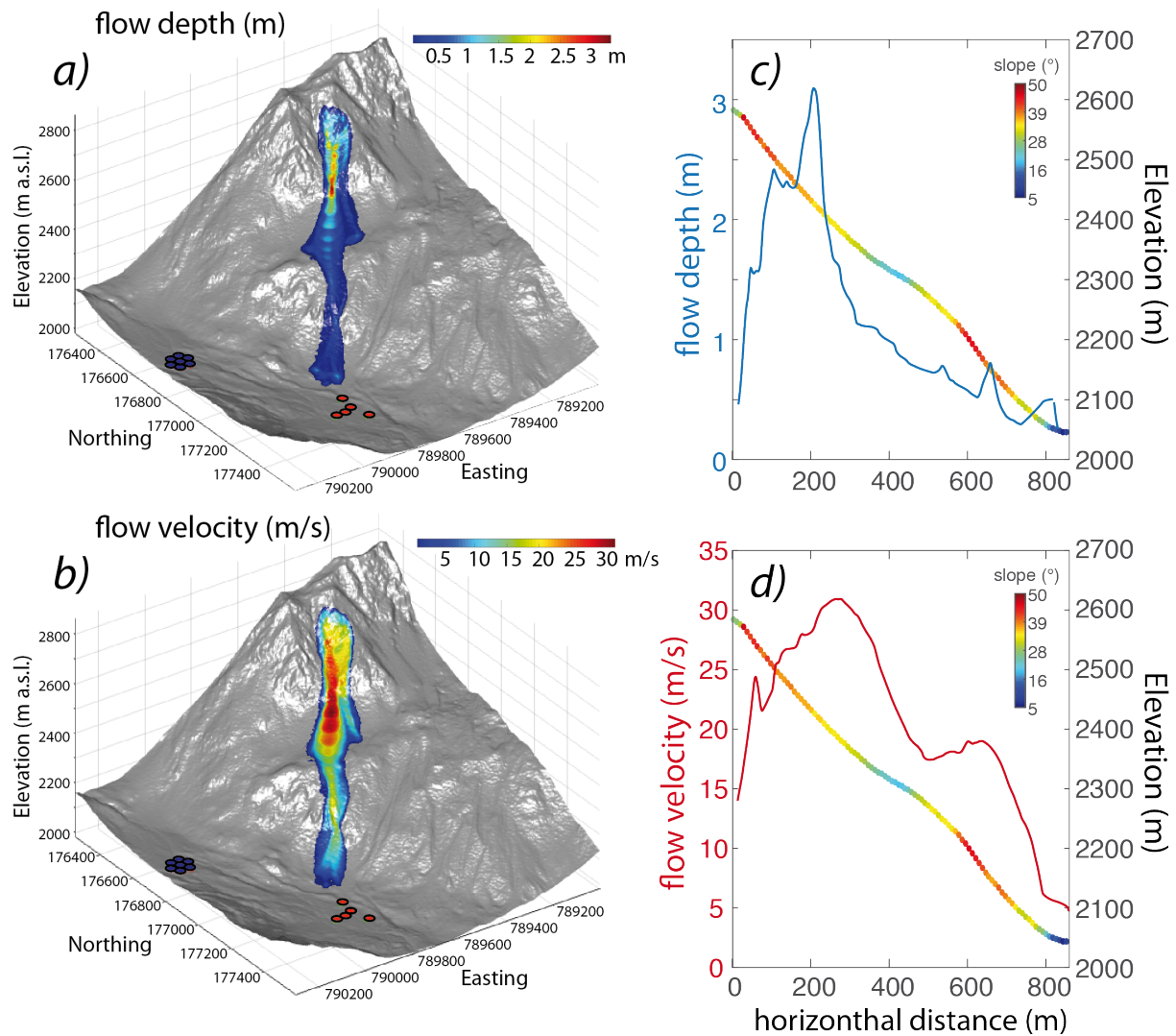


Figure 8. Figure showing the flow extent modeled by RAMMS and highlighting maximum flow depth (a) and flow velocity (b). Profiles of the modeled flow depth (c) and flow velocity (d) along the path overimposed on the avalanche path profile (colour coded according to its slope) as a function of the travelled horizontal distance.

An additional consideration is that the recorded seismic amplitude may be increased by the sound transmitted locally into the ground, as suggested already by *Kogelnig et al.* (2011). In this study, this process is confirmed by the combined analysis of seismic and infrasound detections (Figure 6). Considering the apparent velocity of seismic waves, the array processing highlights high values (> 650 m/s) at the beginning and at the end of the event. These values are in agreement with phase velocities (500-950 m/s) measured by *Vilajosana et al.* (2007a) for snow avalanches in Ryggfonn in Norway, as well as values used by *Lacroix et al.* (2012) for beamforming in the French Alps. The central part of the signal, between 05:19:00 and

05:19:15 UT, is characterized by a lower propagation velocity (≈ 330 m/s), suggesting that the seismic array is likely recording
255 infrasound waves. This corresponds to the time when the infrasound amplitude was maximum (Figure 6a). We suggest that the
central part of the signal is strongly affected by the infrasound radiated by the event, that converts to seismic waves at the earth
free surface and is efficiently recorded by seismometers. This is an agreement with results obtained by Heck *et al.* (2017) for
an avalanche that did occur from the same path in 2017, and applying the multiple signal classification (MUSIC) analysis to
seismic array data.

260 The process of infrasound to seismic energy transition was described by Ichihara *et al.* (2012). An infrasonic wave hitting
the ground ($p(t, x)$) produces a vertical ground velocity ($w(t, x)$) that is directly proportional to the amplitude of the incident
wave ($w(t, x) = Hp(t, x)$). The conversion factor (H) is defined as:

$$H = \frac{\exp\left(\frac{-i\pi}{2}\right)c}{2(\lambda + \mu)} \frac{\lambda + 2\mu}{\mu}, \quad (1)$$

where λ and μ are Lamé's constants of the ground and c is the velocity of sound. It is worth noting how equation (1) is
derived for longitudinal waves (pressure wave in the atmosphere and vertical ground velocity for seismic wave) and it does
265 not account for any frequency dependence. Considering typical values of the Lamé's constant for soil ($\approx 10^8$) Pa, and a sound
velocity (c) of 340 m/s, the conversion factor (H) results $\approx 5 \times 10^{-7}$ m/s/Pa. Therefore, an infrasonic wave of 1 Pa will produce
a detectable seismic signal in the ground. In the specific case of the 5 February avalanche (Figure 4), the recorded pressure of
0.4 Pa, will produce a seismic signal with an amplitude of $\approx 3 \times 10^{-7}$ m/s, that over-imposes on the body and surface seismic
waves produced at the source and corresponds to ≈ 20 % of the recorded seismic amplitude, in our frequency range (> 4.5 Hz)
270 of analysis. This is in agreement with sound velocities recorded in the seismic data during the phase of maximum infrasound
radiation (Figure 6).

This study, combining for the first time seismic and infrasound array data, highlights the complexity of the seismic radiation
by snow avalanches and the contribution of the air-to-ground energy transmission. These have an influence on the recorded
seismic signal and, if not accounted for, might limit the applicability of seismic signals for energy estimations. The absolute
275 seismic amplitude, and corresponding energy, can change according to snow characteristics (dry/wet) (Vilajosana *et al.*, 2007b),
and efficiency of air-to-ground energy transmission (Ichihara *et al.*, 2012). This approach is even more critical considering that
seismic energy is radiated all along the avalanche path (Figure 7a). Moreover, it requires a-priori characterization of the quality
factor of surface waves at the site (Vilajosana *et al.*, 2007b), thus preventing a general application of the proposed procedure
at various sites.

280 Similarly, infrasound amplitude is expected to change dramatically as a function of avalanche type (dry/wet) and path
geometry, and our results suggest that estimating avalanche size from infrasound signals could be difficult. Signal duration
is, for example, reflecting only the part of the path where the avalanche is accelerated, or where the powder cloud develops

(Figure 7d). Considering the radiation of sound by a moving body assumed to be a solid sphere, *Naugolnykh and Bedard* (1990) suggested that the frequency of recorded infrasound must scale inversely with the body size as follow:

$$f = c/\pi D, \tag{2}$$

285 where c is the velocity of sound in the atmosphere while D is the diameter of the sphere.

For the specific case of the avalanche recorded on 5 February 2016, eq 2 predicts a moving sphere-like body with diameter D of ≈ 30 m. This value is obtained by assuming a sound propagation velocity of 330 m/s and considering a peak frequency of 3.3 Hz (Figure 4), and is of the same order as the width of the avalanche channel (<50 m). Nevertheless, a snow avalanche is far from being a rigid sphere moving in the atmosphere. Already *Naugolnykh and Bedard* (1990), suggested that additional
290 processes might contribute to the avalanche infrasound radiation, such as the turbulent pressure pulsation of the powder cloud and/or secondary source mechanisms. *Kogelnig et al.* (2011) successfully modeled the pressure amplitude radiated by a snow avalanche at the Vallée de la Sionne test site, considering a moving turbulent source, where pressure amplitude was dependent on flow dimension and velocity, inferred from independent observation of the event. Therefore, while the approach proposed here following *Naugolnykh and Bedard* (1990) seems to work fine as a first approximation, analyses will be required to further
295 investigate the source mechanisms of infrasound possibly combining infrasound, seismic and high resolution video observation.

6 Conclusions

Results presented here, and obtained from seismic and infrasound array analysis for a powder snow avalanches at short distances (< 1000 m), highlight two separate mechanisms of elastic energy radiation by a snow avalanche. The infrasound energy is radiated only when the powder part develops, and is not produced during the initiation or deposition phase. The duration of
300 the infrasound signal is thus not representative of the entire volume of snow that was transported by the avalanche. Because of the clear migration of infrasound detections in terms of back-azimuth and apparent velocity, we suggest that the source mechanism of the infrasound signal can be interpreted as a moving point source. The clear variation of back-azimuth and apparent velocity obtained from the array analysis, suggest that infrasound can be used as an efficient monitoring for avalanche detection purposes in case a powder cloud develops. Back-projection of the infrasound detections on the avalanche path, suggested that
305 the infrasound energy is radiated only when the flow is confined within a narrow path. According to the analytical formulation of *Carrol et al.* (2013), such a condition enhances the formation of the powder front.

In contrast, the seismic signal is produced during the entire avalanche evolution, including the initiation and deposition area. Therefore, the signal duration is longer and more representative of the entire flow evolution and run-out distance. Unlike
310 infrasound, the seismic back-azimuth and apparent velocity values were more scattered, and as that the detection and location of avalanche events is less straightforward. Furthermore, the scattering of wave parameters suggests multiple sources that act simultaneously along the path.

In agreement with *Heck et al.* (2017), the combined seismic and infrasound array analysis, showed also that during the phase of maximum infrasound radiation, seismic energy is strongly affected by the infrasonic signal. In the specific case presented

here, where the different frequency response of the infrasound (> 0.01 Hz) and seismic (> 4.5) limits the analysis to the high
315 frequency component (> 4.5 Hz) of the elastic energy radiation, infrasound contributes to ≈ 20 % of the recorded seismic
amplitude. This needs to be accounted for, when the seismic amplitude is used to estimate the avalanche energy. Similarly, the
amplitude of recorded infrasound is controlled by the avalanche type (wet/dry) and the flow evolution (i.e. the formation of the
powder cloud). The use of the frequency of the recorded infrasonic signal to estimate the event size is on the contrary more
promising for the avalanche event investigated here. Following *Naugolnykh and Bedard (1990)*, the recorded peak infrasound
320 frequency of 3.3 Hz is consistent with a sphere like body with a diameter of 30 m, in agreement with the the geometry
and extension of the avalanche path. Such an approach could be used as a first approximation of the volume involved in
case independent observations are available, but cannot explain, on its own, the recorded infrasound signal, where a moving
turbulent source has been considered to model recorded infrasound at instrumented sites (*Kogelnig et al., 2011*).

Although many open questions remain concerning the mechanisms of infrasound and seismic energy radiation by snow
325 avalanches, the combined seismic and infrasound array analyses presented in this study help in clarifying some key aspects
of the recorded seismic and infrasound signals, such as source origin, possible source mechanisms and mutual relation of
seismic and infrasonic signals. Further studies will be required, however, to investigate in detail the source mechanisms of
elastic energy radiation, secondary source processes, like turbulence of the powder front, and possible use of the seismic and
the infrasound signal to evaluate the magnitude of the event.

330 *Data availability.* Infrasound and seismic detections resulting from array processing and used here to achieve most of the findings and create
most of the figures are freely available in the Open Science Framework repository (<https://osf.io/p28gc/>), doi:10.17605/OSF.IO/P28GC.

Video supplement. RAMMS::Avalanche simulation, depicting the flow depth (m) along the avalanche path. Red colors indicate flow depths
larger than 2m.

Author contributions. All of the authors contributed actively to the manuscript. In detail, E.M. and A.H. initiated this study, installed and
335 maintained the instrumentation during the winter season. They worked on the infrasound and seismic data array analysis, developed the
model of infrasound and seismic energy partitioning and wrote to the text. M.C. performed the RAMMS modeling of the avalanche. M.C.S.
and G.B. contributed to the text, figure and discussion. M.C.S. worked primarily on seismic data while G.B. worked mostly on infrasound
data and developed the relationship between infrasound and volume.

Competing interests. No competing interests are present.

340 *Acknowledgements.* Part of this research was supported by a grant of the Swiss National Science Foundation (200021149329). We thank Emma Surinach and Bradley Lipovsky for their careful review that helped us to greatly improve the manuscript, and the associated editor Claire Masteller for helpful comments. We would like to thank all our colleagues who helped us with installing and maintaining the instrumentation in the field, in particular Stephanie Mayer, Tobias Burgherr, Matthias Heck, Riccardo Genco and Lorenzo Innocenti.

References

- 345 Adam, V., Chritin, V., Rossi, M., and Van Lancker, E.: Infrasonic monitoring of snow-avalanche activity: what do we know and where do we go from here?, *Annals of Glaciology*, 26, 324-328, 1998.
- Bedard, A.: Detection of avalanches using atmospheric infrasound, *Proceedings of the Western Snow Conference*, edited by: Shafer, B., Western Snow Conference, April 1989, Colorado State University, Fort Collins, CO, USA, 52–58, 1989.
- Biescas, B., F. Dufour, G. Furdada, G. Khazaradze, and E. Suriñach: Frequency content evolution of snow avalanche seismic signals. *Surv. Geophys.* 24, 447–464, 2003.
- 350 Carrol, C.S., Louge, M.Y., and Turnbull, B.: Frontal dynamics of powder snow avalanches. *Journ. Geophys. Res. Earth Sur.* 118, 913-924, doi:10.1002/jgrf20068, 2013.
- Christen, M., Kowalski, J., and Bartelt, P.: RAMMS: Numerical simulation of dense snow avalanches in three-dimensional terrain. *Cold Reg. Sc. Technol.* 63, 1-14, doi:10.1016/j.coldregions.2010.04.005, 2010.
- 355 Chritin, V., Rossi, M., and Bolognesi, R.: Acoustic detection System for Operational Avalanche Forecasting, *Proceeding of International Snow Science Workshop*, Banff, Alberta, 6-11 October 1996, 129-133, 1996.
- Comey, R.H., and Mendenhall, T.: Recent Studies Using Infrasound Sensors to Remotely Monitor Avalanche Activity. *Proceeding of International Snow Science Workshop*, Jackson, WY, 19-24 September 2004, 640-646, 2004.
- Hammer, C., Fah, D., and Ohrnberger, M.: Automatic detection of wet-snow avalanche seismic signals. *Nat. Hazards* 86, 601-618, doi:10.1007/s11069-016-2707-0, 2017.
- 360 Havens, S., Marshall, H.P., Johnson, J.B., and Nicholson, B.: Calculating the velocity of a fast-moving snow avalanche using an infrasound array. *Geophys. Res. Lett.* 41, 6191-6198, doi:10.1002/2014GL061254, 2014.
- Heck, H., Hobiger, M., van Herwijnen, A., Schweizer, J., and Fah, D.: Localization of seismic events produced by avalanches using multiple signal classification. *Geophys. J. Int.* 216, 201-217, doi:10.1093/gji/ggy394, 2017.
- 365 Ichihara, M., Takeo, M., Yokoo, A., Oikawa, J. and Ohminato, T.: Monitoring volcanic activity using correlation patterns between infrasound and ground motion. *Geophys. Res. Lett.* 39, L04304, doi:10.1029/2011GL050542, 2012.
- Issler, D.: Experimental information on the dynamics of dry-snow avalanches, in *Dynamic Response of Granular and Pours Materials under Large and Catastrophic Deformations, Lecture Notes in Applied and Computational Mechanics*, edited by K. Hutter, and N. Kirchner, pp. 109-160, vol. 11, Springer, Berlin, Germany, 2003.
- 370 Kishimura, K., and Izumi, K.: Seismic signals induced by snow avalanche flows. *Nat. Hazards* 15(1), 89-100, 1997.
- Kogelnig, A., Surinach, E., Vilajosana, I., Hubl, J., Sovilla, B., Hiller, M., and Dufour, F.: On the complementariness of infrasound and seismic sensors for monitoring snow avalanches. *Nat. Hazards Earth Syst. Sci.* 11, 2355-2370, doi:10.5194/nhess-11-2355-2011, 2011.
- Kohler, A., McElwaine, J.N., and Sovilla, B.: GEORADAR data and the flow regimes of snow avalanches. *J. Geoph. Res.: Earth Surface* 123, 1272-1294, doi:10.1002/2017JF004375, 2018.
- 375 Lacroix, P., Grasso, J.-R., Roulle, J., Giraud, G., Goetz, D., Morin, S., and Helmstetter, A.: Monitoring of snow avalanches using a seismic array: Location, speed estimation, and relationships to meteorological variables. *J. Geophys. Res.* 117, F01034, doi:10.1029/2011JF002106, 2012.
- Louge, M.Y., Turnbull, B., and Carrol, C.S.: Volume growth of a powder snow avalanches. *Annals of Glaciology* 53, 57-60, doi:10.3189/2012AoG61A030, 2012.

- 380 Marchetti, E., Ripepe, M., Ulivieri, G., and Kogelnig, A.: Infrasound array criteria for automatic detection and front velocity estimation of snow avalanches: towards a real-time early-warning system. *Nat. Hazards Earth. Syst. Sci.* 15, 2545–2555, doi:10.5194/nhess-15-2545-2015, 2015.
- Marchetti, E., van Herwijnen, A., Christian, M., Silengo, M. C., and Barfucci, G.: Seismo-acoustic energy partitioning of a powder snow avalanche: data. *Open Science Framework Repository* doi:10.17605/OSF.IO/P28GC, 2020.
- 385 Marchetti, E., Walter, F., Barfucci, G., Genco, R., Wenner, M., Ripepe, M., McArdell, B., and Price, C.: Infrasound array analysis of debris flow activity and implication for early warning. *J. Geoph. Res.: Earth Surface* 124, doi:10.1029/2018JF004785, 2019.
- Mayer, S., van Herwijnen, A., Ulivieri, G., and Schweizer, J.: Evaluating the performance of operational infrasound avalanche detection systems. *Geop. Res. Abstracts, EGU General Assembly*, 2018.
- Naugolnykh, K., and Bedard, A.: A model of the avalanche infrasonic radiation. IEEE International Geoscience and Remote Sensing Symposium DOI: 10.1109/IGARSS.2002.1025713.
- 390 Sabot, F., Naaim, M., Granada, F., Surinach, E., Planet-Ladret, P., and Furdada, G.: Study of the avalanche dynamics by means of seismic methods, image processing techniques and numerical models. *Ann. Glaciol.* 26, 319–323, 1998.
- Schaerer, P., and Salway, A.: Seismic and impact-pressure monitoring of flowing avalanches. *J. Glaciol.* 26, 179–187, 1980.
- Scott, E.D., Hayward, C.T., Kubichek, R.F., Hamann, J.C., Pierre, J.W., Corney, B., and Mendenhall, T.: Single and multiple sensor identification of avalanche-generated infrasound. *Cold Reg. Sci. Technol.* 47, 159–170, 2007.
- 395 Steinkogler, W., Sovilla, B., and Lehning, M.: Influence of snow cover properties on avalanche dynamics. *Cold Reg. Sc. Technol.* 97, 121–131, doi:10.1016/j.coldregions.2013.10.002, 2014.
- Surinach, E., Furdada, G., Sabot, F., Biescas, B., and Vilaplana, J.M.: On the characterization of seismic signals generated by snow avalanches for monitoring purposes. *Ann. Glaciol.* 32, 268–274, 2001.
- 400 Ulivieri, G., Marchetti, E., Ripepe, M., Chiambretti, I., De Rosa, G., and Segor, V.: Monitoring snow avalanches in Northwestern Italian Alps using an infrasound array. *Cold Reg. Sci. Tech.* 69, 177–183, doi:10.1916/j.coldregions.2011.09.006, 2011.
- van Herwijnen, A., and Schweizer, J.: Seismic sensor array for monitoring an avalanche start zone: Design, deployment and preliminary results. *J. Glaciol.* 57(202), 267–276, doi:10.3189/002214311796405933, 2011a.
- van Herwijnen, A., and Schweizer, J.: Monitoring avalanche activity using a seismic sensor. *Cold Reg. Sc. and Tech.* 69(2-3), 165–176, doi:10.1016/j.coldregions.2011.06.008, 2011b.
- 405 Vilajosana, I., Khazaradze, G., Surinach, E., Lied, E., and Kristensen, K.: Snow avalanche speed determination using seismic methods. *Cold Reg. Sci. Tech.* 49, 2–10, doi:10.1016/j.coldregions.2006.09.007, 2007a.
- Vilajosana, I., E. Surinach, G. Khazaradze, and Gauer, P.: Snow avalanche energy estimation from seismic signal analysis, *Cold Reg. Sci. Tech.* 50, 72–85, 2007b.