

# Dynamics of salt intrusion in the Mekong Delta; results of field observations and integrated coastal-inland modelling

Sepehr Eslami<sup>1,2</sup>, Piet Hoekstra<sup>1</sup>, Herman W.J. Kernkamp<sup>3</sup>, Nam Nguyen Trung<sup>4</sup>, Dung Do Duc<sup>4</sup>, Hung Nguyen Nghia<sup>5</sup>, Tho Tran Quang<sup>4</sup>, Arthur van Dam<sup>3</sup>, Stephen E. Darby<sup>6</sup>, Daniel R. Parsons<sup>7</sup>, Grigorios Vasilopoulos<sup>7</sup>, Lisanne Braat<sup>8</sup>, Maarten van der Vegt<sup>1</sup>

<sup>1</sup>Department Physical Geography, Faculty of Geoscience, Utrecht University, Utrecht, 3584 CB, the Netherlands

<sup>2</sup>Marine and Coastal Systems Unit, Deltares, Delft, 2629 HV, the Netherlands

<sup>3</sup>Software Department, Deltares, Delft, 2629 HV, the Netherlands

10 <sup>4</sup>Southern Institute for Water Resources Planning (SIWRP), Ho Chi Minh City, Ward 3 72710, Vietnam

<sup>5</sup>Southern Institute of Water Resources Research (SIWRR), Ho Chi Minh City, 656 Võ Văn Kiệt, District 5, Vietnam

<sup>6</sup>Geography and Environment, University of Southampton, Southampton SO17 1BJ, UK

<sup>7</sup>Department of Geography, Environment and Earth Sciences, University of Hull, Hull HU6 7RX, UK

<sup>8</sup>Department of Geology and Planetary Sciences, California Institute of Technology, CA 91125, USA

15

*Correspondence to:* Sepehr Eslami (sepehr.eslamiarab@deltares.nl)

**Abstract.** In the list of challenges facing the world largest deltas, increased Saline Water Intrusion (SWI) in the delta's surface water system and its role in jeopardizing freshwater supply is often ranked very high. Yet, detailed process-based studies of SWI at the whole delta scale are limited and the trends are regularly associated to global sea level rise. Here, using field measurements and a sophisticated 3D model that integrates the riverine, rural, estuarine, and coastal dynamics within one numerical domain, we study SWI at the scale of the Mekong Delta in extensive detail. While many studies down-scale the SWI problem to a topic within an estuary, we show that the physical processes on the continental shelf, such as monsoon-driven ocean surge, directly influence salinity dynamics within the delta. Typical values of 20-40 cm surge over the continental shelf contribute to up to 10 km of further SWI. The delta's estuarine system is also more sensitive than many other systems to variations of river discharge. Furthermore, spring-neap variability plays a key role in SWI in the delta. The estuarine variability from a stratified to a mixed system between neap and spring tides develops 3D processes such as estuarine circulation and tidal straining that become the main upstream salt transport mechanisms. The 3D nature of salinity dynamics, and the role of upstream and downstream processes, suggests that compromising on dimension or extent of the numerical domain, can limit the accuracy of predictions of SWI in the delta. The study also showcases that riverbed incision in response to anthropogenic sediment starvation in the last two decades, has increased stratification, and activated or magnified 3D salt transport sub-processes that amplify upstream salt transport. With all the external forces on the delta namely climate change and altered hydrological regime by the upstream dams, due to deeper estuarine channels (driven by sand mining and upstream impoundments), compared to its near past, the delta itself has become far more vulnerable to even mild natural events. This

exemplifies the fundamental importance of preserving the sediment budget and riverbed levels in protecting the world's deltas  
35 against SWI.

## 1 Introduction

Over the past decade, Saline Water Intrusion (SWI) in the Vietnamese Mekong Delta (VMD) has been an issue of major concern and was identified as the key to land use and its future habitability (CGIAR Research Centers in Southeast Asia, 2016; Kantoush et al., 2017; UNDP, 2016). The 2016 and 2020 droughts resulted in significant disruptions (~450-650 k ha of crop  
40 loss) within the delta due to SWI (IFRC, 2020; UNDP 2016). Eslami et al.(2019b) showed that there have been increasing trends of SWI and tidal amplification, even with increasing freshwater discharge from upstream (Eslami et al., 2019b; Li et al., 2017; Lu et al., 2014; Räsänen et al., 2017), that are being driven by bed level changes, especially within the tidal rivers (Doan et al., 2018; Eslami et al., 2019b; Vasilopoulos et al., 2020), in response to anthropogenic sediment starvation. This sediment starvation is itself caused by sediment trapping by upstream dams (Fan et al., 2015; Koehnken, 2014; Kondolf et al.,  
45 2014, 2018; Kummur et al., 2010; Manh et al., 2015; MRC, 2011; Thi Ha et al., 2018) and intensive downstream sand mining (Brunier et al., 2014; Eslami et al., 2019b). Amid various reports of extreme SWI within the VMD, the present study shows the observed dynamics of SWI in the dry season and applies an integrated state-of-the-art coastal-inland 3D numerical model to explain the observed trends of increased SWI. While in response to groundwater extraction, the delta experiences land subsidence (Erban et al., 2014; Minderhoud et al., 2017) and SWI in the groundwater system (Hung Van Pham et al., 2019),  
50 this manuscript is focused on fresh-saline water dynamics in the surface water system.

Previous studies on estuarine salinity dynamics can be roughly classified in three categories. 1) The tidally-averaged steady-state theories of competition between upstream dispersive versus downstream advective salt flux (Mac Cready and Geyer, 2010; Hansen and Rattray, 1965; Prandle, 2004; Pritchard, 1956; Savenije, 2005), 2) Non-stationary decomposition of salt transport processes such as Stokes transport, tidal pumping, tidal straining, gravitational circulation and residual flow (Banas et al., 2004; Díez-Minguito et al., 2013; Dyer, 1997; Fischer, 1976; Lewis and Lewis, 1983; Simpson et al., 2001; Uncles et al., 1985) and 3) 3D numerical modelling (Burchard and Hetland, 2010; Hetland and Geyer, 2004; Lerczak et al., 2009; Monismith et al., 2002; Simpson et al., 2001; Warner et al., 2005). The first category generally provides a primary framework for studying long-term (seasonal or decadal) trends in estuarine systems. The second is an approach to understand the physical processes that dominate estuarine salinity dynamics. However, as estuarine systems are often quasi/un-steady and in transition,  
60 in absence of detailed high-resolution long-term measurements in these large bodies of water, prognostic evaluation of estuarine dynamics can significantly benefit from numerical modelling (the third category of study). The competition between upstream dispersive and downstream advective salt flux, along with competition between buoyancy production and tidal mixing leads to variations of salinity and its transport mechanisms in multiple temporal and spatial scales. To qualitatively describe the effect of freshwater inflow and tides in an estuarine system, a tidally averaged steady-state approach can be  
65 adopted. When quantitative in-depth knowledge is required, the spatio-temporal estuarine variabilities of spring-neap cycles,

stratification, transversal variabilities, and their interactions become critical processes. To address these processes, 1D numerical models can perform adequately when an estuarine system is fully mixed; however, very often, stratification changes with spring-neap tidal cycles (Jay, 2010; Jay and Dungan Smith, 1990) and together with morphological changes, can lead to estuarine salinity regime shifts (Geyer and MacCready, 2013; Simpson et al., 1990). These variabilities develop complexities that demand more detailed measurements and more sophisticated modelling approaches.

Given the gravity of SWI as a threat to the livelihood of the VMD, and other major deltas around the world that also face SWI such as Ganges-Brahmaputra, Indus, Mississippi, Chao Phraya, Orinoco, Ayeyarwady, Red and Pearl River Deltas (Bucx et al., 2014; Echezuría et al., 2002; Gong and Shen, 2011a; Hoepfner et al., 2008; Nguyen et al., 2017; Rabbani et al., 2013; Takeda et al., 2016; Zia et al., 2017), the available literature addressing SWI in the VMD is limited. Some field measurements (Gugliotta et al., 2017; Nguyen and Savenije, 2006; Nowacki et al., 2015) that provide snapshots of specific periods or regions, forming a qualitative impression of salinity within the VMD. Modelling efforts are bound to analytical models (e.g., Nguyen and Savenije, 2006) that are mainly focused on the steady-state salinity regime; and existing numerical modelling efforts are either in 1D (Smajgl et al., 2015; Tran Quoc Dat et al., 2011; Vu et al., 2018) with limitations in capturing various physical processes, or depth-averaged and variable in width (2DH) with limited domains (Tran Anh et al., 2018), both overlooking the effect of stratification. Furthermore, all these numerical studies are focused on projections in response to climate change, even though recent work has shown that channel changes are a much more significant control on barotropic and baroclinic dynamics (Eslami et al., 2019b; Vasilopoulos et al., 2020). Moreover, despite all the anecdotal reports of SWI in the VMD, it is only recently that a systematic analysis of available salinity data has shown how salinity is increasing within the VMD (Eslami et al., 2019b). The shear dimensions of the Mekong mega-Delta (~ 200 km x 200 km, with more than 8000 primary and secondary irrigation canals), the lack of detailed data, the computation capacity and limitations in the past numerical models have all conspired to make it difficult to study SWI on that scale and with the requisite temporal and spatial detail. However, recent developments in numerical modelling techniques now make it feasible to integrate upstream and coastal processes within one numerical domain with different dimensions (Eslami et al., 2019a; Kernkamp et al., 2011; Martyr-Koller et al., 2017).

The aim of this study is to a) show the effect of subtidal variability (e.g., surge, discharge and spring-neap tide) on SWI; b) study temporal 3D estuarine variability, and the 3D nature of SWI in the VMD and c) demonstrate how bed level changes in the VMD have changed the salt transport mechanisms, resulting in excessive SWI within the VMD. To that end, we measured salinity structure simultaneously along two distributary channels of the Hau River during a spring-neap tidal cycle. We previously (Eslami et al., 2019a) showed the importance of the VMD irrigation system on barotropic tidal propagation. Here, we use a state of the art high-resolution 3D numerical model (Kernkamp et al., 2011) of the Mekong estuarine system, including its system of primary and secondary channels and part of the continental shelf, incorporating a new 2018 bathymetry (Vasilopoulos et al., 2020) covering the principal distributary channel network. In a series of sensitivity analyses and perturbation simulations, we demonstrate the role of spring-neap variability, subtidal surge effect on SWI and show the temporal variation of advective and dispersive salt fluxes. Furthermore, we show how SWI would vary during the 2016

drought, if an older bathymetry (2008) was still in place, thereby clearly demonstrating how recent (2008-2018) changes in  
100 bathymetry have dramatically altered salt transport mechanisms that exacerbate SWI in the Mekong Delta.

## 2 Environmental conditions and Methods

### 2.1 Area of study

The Mekong River (MR) springs from the Tibetan plateau in China, crosses Laos, Thailand and Cambodia until it forms the  
Vietnamese Mekong Delta (see Figure 1). The MR, carrying annually  $340\text{-}450 \times 10^9 \text{ m}^3$  of water (total yearly interquartile range  
105 based on MRC data), prior to entering the VMD, splits into two branches, and forms the two systems of the Tien (Mekong)  
and Hau (Bassac) tidal rivers. Further downstream, the two rivers split into, in total, seven estuarine distributary channels  
(Figure 1b) with various channel width and depths (see Eslami et al., 2019a). Despite different properties, all these estuarine  
channels share similarities in their tidal dynamics, *i.e.*, they are all mesotidal hyposynchronous (Dyer, 1997; Eslami et al.,  
2019a; Nichols and Biggs, 1985), with strong spring-neap variations. Spring tides are dominated by semi-diurnal tidal species  
110 (tidal range  $\sim 3$  m) and neap tides are determined by diurnal tidal components (tidal range  $\sim 2$  m), defining a sharp spring-neap  
variability. Morphologically, the lower  $\sim 80$  km of the channels are tide-dominated and fluvially influenced, with widening and  
shallowing channels seaward, and significant mud content in the seabed (Gugliotta et al., 2017). Upstream of that until Phnom  
Penh, Cambodia, the channels are fluvially dominated and tidally influenced, with meandering channels that deepen seaward,  
with little mud content (Gugliotta et al., 2017). The VMD is characterized by strong monsoon-driven seasonal climate  
115 variations (Mekong River Commission, 2010), with the wet (July to October, SW monsoon) and dry (December-May, NE  
monsoon) seasons contrasting dramatically. The wet season floods the floodplains of Cambodia and Vietnam, tidal propagation  
is damped by the large freshwater discharge from upstream and ocean saline water cannot penetrate more than a few kilometres  
into the estuarine channels (Eslami et al., 2019a; Gugliotta et al., 2017). However, during the dry season, the MR only carries  
7-9% of the total yearly discharge, tidal range increases from  $\sim 1$  m to 2 m in Can Tho (see Figure 1) and My Thuan (see  
120 Eslami et al., 2019a), salinity intrudes up to  $\sim 50\text{-}60$  km (assuming a 2 PSU threshold ) into the surface water system of the  
delta (Gugliotta et al., 2017; Nguyen and Savenije, 2006; Nowacki et al., 2015), and the North-Eastern monsoon winds  
continuously create modest surge events ( $\sim 10\text{-}30$  cm) along the VMD coast (Eslami et al., 2019a). In this study, as we focus  
on SWI, we limit the timescale to the dry season, and specifically focus on the 2016 drought, driven by the 2015-2016 El Niño,  
and the subsequent excessive SWI within the VMD.

### 125 2.2 Field Campaign

Although drought is not new in the Mekong Delta, in 2016, there were numerous anecdotal reports of salinity reaching Can  
Tho City (*e.g.* UNDP, 2016). To measure the dynamics during this extreme event, we aimed to measure maximum SWI during  
a High-Water Slack (HWS) along the Hau River distributary network (Dinh An and Tran De), using moving boat measurement  
technique (Nguyen and Savenije, 2006; Savenije, 1986). The method captures estuarine salinity structure along the channel

130 thalweg at HWS. On two different dates, April-1<sup>st</sup> and April-9<sup>th</sup> of 2016, respectively during neap and spring tides, we measured salinity structures and intrusion lengths, simultaneously along the two channels (See Figure 1b for the salinity routes). For that, starting from the estuary mouth at the HWS, we measured conductivity and temperature profiles over the depth using the conductivity sensors (SensorNet TetraCon 700 IQ) at 1 m vertical resolution. To follow HWS upstream, we then sailed upstream by a speed boat at the tidal propagation speed ( $\sim 30\text{-}35 \text{ km hr}^{-1}$ ) and repeated the measurement over the full depth  
135 every 3 km until we reached near-zero conductivity ( $\sim 0.5 \text{ mS s}^{-1}$ ). Salinity was then transformed to PSU from conductivity [ $\text{mS cm}^{-1}$ ] and temperature [ $^{\circ}\text{C}$ ] measurements made following (UNESCO, 1981) definition.

### 2.3 Model description

Delft3D-Flexible Mesh (Delft3D-FM) (Kernkamp et al., 2011) is a state of the art, open-source numerical model that solves the incompressible (hydrostatic) Reynolds-Averaged Navier-Stokes Equations (within the 3D domain) and Shallow Water  
140 Equations (within the 1D/2D domain) in an orthogonal unstructured staggered grid discretization (Kramer and Stelling, 2008). The model applies a finite volume conservation formulation of mass, momentum, turbulence, salinity, temperature, and conservative matter. The barotropic pressure coupling is implicit, but baroclinic pressure is treated explicitly, spatially applying a finite volume staggered-grid discretization. The model implicitly solves conservation of mass, momentum, transport of matter and the Eckart (Eckart, 1958) or UNSECO (UNESCO, 1981) equation of state in three dimensions, to calculate water level,  
145 horizontal and vertical velocity and salinity concentration. In the vertical, a so-called z-layer (fixed) scheme is applied, along which hydrostatic pressure assumption, and a Manning bottom friction treatment is adopted. Furthermore, in the vertical a  $k - \epsilon$  turbulence closure is applied (Rodi, 1993). Vertical advection of momentum and the turbulence properties are solved with a first order upwind scheme, but vertical transport of matter is treated with a higher order discretization scheme. The reader is referred to Kernkamp et al., (2011) and Martyr-Koller et al., (2017) for more details on Delft3D-FM development and  
150 background.

### 2.4 Model set-up and modelling approach

The previously developed coupled 1D-2DH barotropic model of the VMD (Eslami et al., 2019a) is further extended and modified in this study to assess detailed SWI processes. The 2DH parts of the network are expanded to 3D, and the 1D channels are expanded in depth to 2DV (width-integrated but depth-varying), following identical vertical layering as the rest of the  
155 model. Furthermore, the part of the Western continental shelf (70 km offshore) is added to the model domain and downstream of Can Tho and My Thuan (see Figure 1), the model domain is updated to 3D (previously in 1D). The horizontal model resolution is increased to approximately 200 m along the channels and 50-200 m across the channels (depending on channel width). The vertical resolution of the z-layers is set to 0.5 m, *i.e.*, 20 vertical layers in 10 m of depth. Vertical resolution is gradually increased below 15 m depth to save computation time in the deeper continental shelf. Following Eslami et al. (2019a),  
160 the re-calibrated spatially-varying Manning bed friction coefficient is lower along the downstream estuarine distributary channels ( $0.02 \text{ s m}^{-1/3}$ ) and increases to  $0.04 \text{ s m}^{-1/3}$  along the upstream rivers.

From upstream, the model is forced with the daily averaged discharge at Kratie, Cambodia (nearly 500 km upstream), and from downstream by 13 leading astronomic tidal components located 70 km offshore. Measured subtidal WL at Binh Dai (see Figure 4) is super-imposed to the offshore boundary with its associated time lag (similar to Eslami et al., 2019a) to replicate  
165 subtidal water level variations, representing the effect of ocean surge at the boundary. The negligible (very low in the simulated year 2016) daily averaged discharge from the Tonle Sap Lake is calculated as the difference between the discharge entering the VMD (as observed for the Tien and Hau Rivers at Tan Chau and Chau Doc) and the Mekong River discharge as observed at Kratie (considering the time lag between Kratie and the VMD). Neuman conditions are assigned to the cross-coastline boundaries and offshore wind is considered uniformly distributed over the model domain. Evaporation gradually increased  
170 from 4 to 7 mm/day from January to April (Kumiko et al., 2008; Kummum et al., 2014), transpiration is neglected, and precipitation is assumed zero during the dry season. Spatially varying water demand is incorporated in a manner identical to Eslami et al., (2019a) and a total of 52 sluice gates (Figure 1) contained the irrigation system from SWI and remained closed throughout the simulations. **Table 1** provides a summary of the input data and their sources.

As SWI is a dry season phenomenon, the simulations ran from January to end of April, and the first month of simulation is  
175 considered as spin up time. In order to examine various physical processes, following a method of factors separation (Buschman et al., 2010; Eslami et al., 2019a; Sassi et al., 2011), various model forcings are specifically turned on and off in order to evaluate their effect and importance on SWI. Riverbed levels have significantly changed in the past 20 years (Eslami et al., 2019b; Vasilopoulos et al., 2020). In order to demonstrate the role of riverbed level changes on SWI, the calibrated model with the 2018 bathymetry is also run with an older 2008 bathymetry. The 2008 bathymetry is partly obtained from  
180 Mekong River Commission (MRC) and partly obtained from the Southern Institute for Water Resources Planning (SIWRP), while for 2016 simulations the 2018 bathymetry of Vasilopoulos et al. (2020) is used.

### 3 Results

#### 3.1 Field campaign

Amid various reports of historical SWI up to 90 km (near Can Tho City) in 2016 (e.g., UNDP, 2016), in our field campaign  
185 we did not measure values that substantially exceeded previously published observations. Along the Dinh An channel, we measured maximum ~50 km of SWI (with 2 PSU as the threshold) during spring tide (see Figure 2), similar to observations of Nguyen and Savenije (2006). This triggered various questions on the timing and the extent of SWI as the drought reports were still in the press. Despite not measuring the historical SWI length, the observed trends were intriguing. Within the Dinh An Channel, SWI length was slightly higher during the spring tide, but salinity near the mouth was significantly higher during the  
190 neap tide, while this did not change significantly at Tran De estuary mouth. Stratification reduced remarkably from neap tide to spring tide in the Dinh An channel but did not change significantly in the Tran De channel. Figure 3 shows various environmental parameters during the 2016 dry season. To correlate the observations with various environmental indicators, observed daily averaged wind speed and direction (pre-dominantly NE monsoon wind) along with tidal and the Godin-filtered

(Godin, 1972) subtidal water level at Can Tho (Figure 3a) shows the subtidal response of water level to wind (also see Eslami et al., 2019a). Furthermore, subtidal discharge at Can Tho (Figure 3b), which is controlled by upstream freshwater supply and downstream subtidal variations shows a response (lag) to subtidal water level variations, *i.e.*, despite overall trends, there seem to be a trough and peak response to ocean surge peaks (also see Eslami et al., 2019a).

Stationary 2-hourly measurements of depth-averaged salinity (see section 3.2 for further detail) at two stations, Dai Ngai and Cau Quan, showed that salinity was highest around the second week of February (period-1) and March (period-2) and declined significantly past mid-March, before the field campaign took place. These two periods do follow episodes of lower subtidal discharge, but do not necessarily coincide with the lowest freshwater discharge periods (*e.g.*, Mar. 22<sup>nd</sup> to Apr. 1<sup>st</sup>). In terms of tidal stage, both periods coincide with the transition period of neap to spring tide. Both periods of high salinity also coincide with ocean surge events, although period-1 correlates with a significantly stronger surge. Overall, this implies that a combination of physical forces determines salinity level in the delta and cannot be reduced to simply upstream discharge or downstream tidal forcing. At the sea boundary it is not only the tidal variation, but also the residual current intensity and river discharge in the preceding period that determine the overall salinity at the ocean boundary. These complexities demand an integrated 3-dimensional modelling, with as many environmental forcings as possible to explain the barotropic, baroclinic, intra-/subtidal processes that drive SWI within the system.

### 3.2 Model validation

For the year 2016, a series of model performance statistics (Pearson correlation coefficient ( $R^2$ ) and Nash-Sutcliffe coefficient of efficiency NSE (Nash and Sutcliffe, 1970)) are calculated to examine the Delft3D-FM model performance (see Figure 4a, b, c, i & j). Comparison of stationary salinity observations with the model is slightly more complicated. The observations are at 2-hourly intervals, with irregular gaps in between. The actual measurements are carried out manually, at a point off the riverbank. Manual measurements over depth are then averaged by  $S = (S_{20\% \text{ depth}} + 2 \times S_{50\% \text{ depth}} + S_{80\% \text{ depth}})/4$ , where  $S$  is the presented observed depth-averaged salinity (personal communication with SRHMC and SIWRP). Furthermore, it will be shown later that salinity within the VMD is highly sensitive to small variations of freshwater supply and other subtidal forcings. Therefore, although the assumed water demand distribution is as close as possible to reality (see also Eslami et al., 2019a), in practice, it is subject to spatial and temporal variations, especially in specific drought years, that are not input to the model. This makes the model-observation comparison a delicate matter.

By calculating a depth-averaged salinity in the same fashion, the qualitative comparison is made for intra- and subtidal variations at multiple stations (see Figure 4d, e, f, g, k & l). Subtidal salinity is modelled reasonably well at all stations, but intra-tidal salinity variability at Dai Ngai (Figure 4-l) is underestimated. However, given the low salinity at Dai Ngai and its location near a major primary water distribution canal, as well as multiple islands in the vicinity, and in proximity of an estuarine junction, comparisons at this location are difficult. Furthermore, Figure 5 shows a comparison of the modelled and observed (field campaign) HWS estuarine salinity structures along the two distributary channels of the Hau River, during neap and spring tide. The Dinh An channel clearly transitions from a stratified estuary during neap tide to a partially-mixed system

during the spring tide, while the Tran De channel remains a moderately stratified to partially-mixed system over the entire period. In a qualitative comparison, these patterns were also reproduced by the model, although the model tends to have slightly smaller top-bottom differences in salinity and smaller SWI than observed. The model-data comparison shows that the model  
230 represents the spatial and temporal patterns in SWI reasonably well and reproduces the estuarine spring-neap variability.

### 3.3 General trends of SWI

In the previous section, we showed a strong spring-neap variability along the two lower distributary channels of the Hau River. To study the SWI along all the estuarine distributary channels, Figure 6 shows the temporal variations of subtidal depth-averaged SWI length (with 2 PSU threshold), along seven distributary channels, as well as the over-depth salinity difference, indicating stratification. Overall, the VMD experiences a variable SWI of ~30-70 km during the dry season. Despite differences  
235 in the magnitude, with the exception of the lower My Tho estuarine distributaries (Dai and Tieu), SWI follows similar trends in the lower distributary channels of the Hau and Tien Rivers. The estuarine systems of Tran De – Dinh An and Co Chien - Cung Hau, as well as Ham Luong channel show analogous temporal variations of SWI length. Furthermore, in terms of stratification, Co Chien – Cung Hau and Tran De – Dinh An show similar bi-weekly spring-neap variations, *i.e.*, during the  
240 neap tide, Dinh An and Co Chien (the two deeper channels), experience a much higher stratification than Tran De and Cung Hau. Between the lower distributary channels of Cho Lach, stratification patterns of the single Ham Luong channel also resemble those of the deeper Dinh An and Co Chien channels.

However, within the lower My Tho channels, the narrower and shallower Dai and Tieu have more continuous SWI patterns. This can be partially explained by the limited temporal estuarine variability in terms of stratification. While all channels show  
245 increased stratification during neap tide, this is limited in Dai and Tieu. These estuarine channels remain partially to well-mixed throughout the dry season, and consequently, show a slower response to short-term environmental forcing anomalies, *i.e.*, they mainly follow the large-scale trends of variations of river discharge. In addition, as the Mekong River discharge gradually increases in April, so does water demand within the provinces along the Tien River. As their received freshwater supply during the dry season is in total ~5% of the total VMD freshwater inflow, upon increasing salinity in the channels, the  
250 minor spatial variations in discharge and downstream water level gradient are not sufficient to compensate for the upstream baroclinic pressure gradient. Therefore, they take longer in the dry season, towards the wet season, to become fresh again. Since the model was able to reproduce the intra- and sub-tidal processes, as listed in Table 2, in a number of simulations, we examined the role of various processes in determining SWI. As the measurement campaign was carried out in the lower Hau River and its two distributary channels and most of the estuarine channels seem to follow similar SWI trends in time, for  
255 further detailed analysis we focus only on the Hau River estuarine channels.

### 3.4 Ocean surge effect

Figure 7a shows modelled tidal and subtidal water levels at Can Tho, including (reference simulation called Ref.) and excluding (referred to as NS) offshore ocean surge, showing how higher subtidal water levels are associated with ocean surge and



correlated to strong NE monsoon winds. Figure 7b shows the effect of the surge on the subtidal discharge in Can Tho, upstream  
260 of the Dinh An – Tran De estuarine network. Note that even in the absence of ocean surge (NS simulation), there is still a  
strong spring-neap signal in the subtidal discharge. During spring tides the river-tide interaction results in larger subtidal  
friction, which causes the generation of a subtidal wave and temporary storage of water, that is released during neap tide (see  
Eslami et al., 2019a). Figure 7c & d show the simulated change in salinity in absence of ocean surge near two stationary  
observation points, and Figure 7e shows SWI length in the Dinh An channel with and without the effect of ocean surge. In  
265 general, increase in water level driven by ocean surge, can increase subtidal stationary salinity by 20-30%, 25 km from the  
river mouth, and increase the subtidal SWI length by as much as 10 km (see Figure 7e). This underscores the interconnectivity  
of baroclinicity within the Mekong estuarine system with processes that develop hundreds of kilometres offshore. Therefore,  
depending on the sensitivity of the application, accurate forecasting of SWI demands a system that at least incorporates  
complete barotropic variations of the continental shelf.

### 270 3.5 Spring neap cycle

In section 3.3, we briefly touched upon the spring-neap variability of the estuarine channels and its potential role on SWI.  
Here, by limiting the offshore tidal constituents to a single semi-diurnal  $M_2$  tide (with amplitude  $M_2 + 0.5 S_2$ , see Table 2),  
while other environmental forces remain unchanged (*e.g.*, ocean surge, discharge variability, water demand etc.), we removed  
the spring-neap cycle from the system forcing, which resulted in up to ~30 km lower SWI length (Figure 7e). Contrarily, by  
275 limiting the tidal species to a diurnal constituent (with  $K_1$  amplitude +  $O_1$  amplitude), effectively reducing tidal mixing, salinity  
intrusion length increased up to ~20 km. By limiting the tidal constituents to  $M_2$  and  $S_2$  to generate a spring-neap cycle ( $M_2S_2$   
model, see Table 2), in the absence of 11 other tidal constituents, the modelled SWI length was still generally close to the  
reference simulation, accentuating the significant role of spring-neap variability on SWI. Figure 8 and Figure 9 show estuarine  
variability in the Dinh An channel over two periods: period-1) high SWI in early February (Figure 8) and period-2) prior to  
280 the field campaign (Figure 9); field campaign was carried out between March-30<sup>th</sup> and April-9<sup>th</sup>. Period-1, during its first 10  
days, is marked by a strong ocean surge that amplified channel depth, hence stratification and period-2 generally shows lower  
salinity that is partly driven by lower salt content due to higher discharge along the second half of March. Nonetheless, both  
periods show that periods of stratified salinity structure are followed by periods of high upstream salt flux (see section 3.6).  
Maximum salinity is reached during the transition of the system from stratified (neap) to [partially] mixed (spring) states when  
285 the system responds to tidal forcing. When the system is not stratified anymore, average salinity starts declining with advective  
transport dominating total salt flux in the downstream direction. Given the similar temporal trends of estuarine variability in  
different estuarine channels of the VMD, this indicates how important the role of spring-neap variability is in increasing total  
SWI in most of the VMD. By decomposing the salt fluxes in section 3.6 we will further expand on the role of tidal variability  
and the effect of spring-neap cycle, along with other environmental forces on SWI in different periods.

### 290 3.6 Salt fluxes

To better understand how the temporal changes in forcing (spring-neap, discharge variation, ocean surge) or bathymetry vary the SWI, we studied the subtidal salt transport and decomposed it into its different contributions. Following (Banas et al., 2004; Dyer, 1997; Lewis and Lewis, 1983; Simpson et al., 2001; Uncles et al., 1985) and borrowing the notation of Díez-Minguito et al., (2013), total over-depth salt flux is:

$$295 \quad f = \int_{-h_0}^{\eta} u s \, dz ; \quad h = h_0 + \eta \quad (1)$$

Where  $u$  is the along channel velocity per unit of width,  $s$  is the salt content,  $h_0$  is the mean depth,  $\eta$  elevation and  $h$  total depth. Velocity and salinity can be written as:

$$u = \underline{u} + u_v; \quad s = \underline{s} + s_v; \quad u = \bar{u} + \tilde{u}; \quad s = \bar{s} + \tilde{s} \quad (2)$$

With  $\bar{\quad}$  denoting the depth-averaged,  $\overline{\quad}$  referring to tidally averaged (subtidal),  $\widetilde{\quad}_v$  showing deviation from depth-averaged and  $\tilde{\quad}$  deviation from the subtidal signal. Total salt flux can be decomposed to eight components:

$$300 \quad \bar{f} = \underbrace{\bar{h} \bar{u} \bar{s}}_{T_1} + \underbrace{\bar{s} \bar{\eta} \bar{u}}_{T_2} + \underbrace{\bar{u} \bar{\eta} \bar{s}}_{T_3} + \underbrace{\bar{h} \tilde{u} \bar{s}}_{T_4} + \underbrace{\bar{\eta} \tilde{u} \bar{s}}_{T_5} + \underbrace{\bar{h} \widetilde{u}_v \widetilde{s}_v}_{T_6} + \underbrace{\bar{h} \bar{u}_v \bar{s}_v}_{T_7} + \underbrace{\bar{\eta} \widetilde{u}_v \widetilde{s}_v}_{T_8} \quad (3)$$

Where  $T_1$  is the Eulerian non-tidal flow, summing up salt flux by river discharge, Stokes return flow and all influences on the mean flow.  $T_2$  is associated with Stokes transport,  $T_3$ ,  $T_4$  and  $T_5$  are tidal pumping terms correlating tidal variations of depth and depth averaged current and salinity.  $T_6$  is a term associated with covariance of depth-varying current and salinity, namely, tidal straining.  $T_7$  refers to estuarine circulation, consisting of vertical gravitational circulation and other vertically sheared flows (e.g., strain-induced periodic stratification) and  $T_8$  is a normally negligible triple correlation of water level variation and depth-varying deviation of velocity and salinity. These fluxes are then integrated over the cross-section.

Figure 7f & g show different cross-sectionally integrated salt fluxes in the two lower distributary channels of the Hau River, nearly 15 km from the sea. In both channels, the Stokes transport is always positive (upstream), and the residual Eulerian transport is always negative (downstream). The Dinh An channel, because of its larger depth and cross-sectional area (nearly double in width) shows salt fluxes larger by nearly two-fold. In both channels, the Stokes transport peaks by spring tide, driven by increased amplitude of semi-diurnal tide and its associated mixing, while total salt transport is mainly downstream, driven by advective Eulerian transport. Total salt flux in the Dinh An channel can be characterized as more event-like compared to the Tran De channel. This is especially driven by its spring-neap variability in stratification due to the larger depth of the Dinh An channel. In both channels, estuarine circulation increases and dominates salt flux with lower reduced mixing during neap tide. Prior to the two periods with maximum SWI (early February and March) upstream salt transport peaks especially in the Dinh An channel. These peaks start with peaks in estuarine circulation during neap tide and sustain with peaks in tidal straining in the onset of transition to the spring tide. While the terms associated with tidal pumping show limited contribution to the total salt flux, tidal straining becomes an important term during peak SWI events. Tidal straining maximizes in transition between neap and spring, when semi-diurnal tidal amplitude increases, but the system is yet to transition from stratified to

partially mixed. The assessment of salt fluxes further visualizes the importance of various forcings as well as geometry/bathymetry, i.e., channel depth in SWI. Therefore, by leveraging a similar analysis, we will further investigate what salt transport mechanisms are influenced when riverbed levels change within the estuarine system of the VMD.

### 3.7 Effect of bathymetry

325 The calibrated model was run with the 2008 bathymetry to demonstrate how bed level changes have influenced SWI in the  
VMD. It was previously shown that the Ham Luong estuarine channel (see Figure 1) has experienced the largest increase in  
SWI compared to other estuarine channels (Eslami et al., 2019b). That study also showed that tidal amplitude in the Tien river  
system has increased by nearly 40%. Therefore, in this section, we focus on the model results of the Ham Luong estuarine  
channel. Comparison of the 2008 and 2018 (Vasilopoulos et al., 2020) bathymetries shows an average ~1.5 m incision in Ham  
330 Luong channel during this period (nearly 10% increase in depth), but this value increases to ~3 m along the thalweg, which  
implies significant influence on tidal propagation and fresh-saline water dynamics. **Figure 13a** shows that under identical  
environmental forces, SWI length would be 5-10 km shorter, had the riverbed levels not changed in the past decade. **Figure**  
**13b & c** show various salt fluxes at two cross-sections, 20 km and 50 km from the sea, respectively. In terms of significance  
of various fluxes, we observe similar trends between Ham Luong and Dinh An channels (see also Figure 6 and Figure 7). Total  
335 salt transport, especially during neap tide when the system is more stratified, has increased by nearly 50%. This is mainly  
driven by fluxes associated with gravitational circulation and tidal straining, directly correlated with increased stratification in  
response to deeper riverbed levels. Upstream Stokes transport that is mainly driven by increased semi-diurnal tidal amplitude  
and the cross-sectional area has also increased by nearly 15% under the more recent bathymetry. However, as Stokes transport  
is maximum during spring tide when stratification is minimized, its effect is compensated by the advective downstream residual  
340 transport, dominated by river discharge and Stokes return flow.

This exercise shows that increased river depth directly and profoundly impacts salt flux mechanisms. For example, 50 km from  
the estuarine mouth (**Figure 13c**), there would nearly be no salt flux due to estuarine circulation. However, under the current  
(2018) bathymetry, salt transport by estuarine circulation is the dominant mechanism, and by tidal straining has nearly doubled.  
Note that the most impacted processes are those associated to vertical gradients (salinity and velocity) with temporal variations  
345 in their significance. Salt transport by estuarine circulation is maximized during the neap tide, and transport by tidal straining  
is maximized in the early transition of neap tide to spring tide, while Stokes transport that is often treated reasonably well,  
even in 1D numerical/analytical approaches, peaks during spring tide. These dynamics suggest that not only the bathymetry  
change has shifted the salt flux regime of the estuary, but it has also developed to a more complicated system that requires a  
more sophisticated treatment. Therefore, it is plausible to argue that one-dimensional treatment of such a complicated system,  
350 as it is common practice, cannot accurately reflect changes in the salinity dynamics of the Mekong Delta.

## 4 Discussion

Previous modelling studies of salinity in the Mekong Delta can be classified into three categories: 1) applying analytical stationary models along with field measurements (Nguyen et al., 2008; Nguyen and Savenije, 2006), with temporal and spatial limitations; 2) 1D numerical studies (Khang et al., 2008; Smajgl et al., 2015) that include the system of primary and secondary channels but excluded the shelf dynamics; these models need to force downstream salt concentration boundary conditions and due to the depth-averaged nature, are limited in physical representation; or 3) offline numerical coupling of 1D and 2D (Tran Anh et al., 2018) or 3D (Nguyen and Tanaka, 2007), limited to lower Hau River. Given recent advances in numerical methods and computational power, it has become possible to efficiently model the entire Mekong Delta in a combination 2DV and 3D. This provided a powerful tool with a fully integrated online-coupled model of upstream river sections, irrigation canals, estuarine channels, and a large part of the continental shelf. With this tool, 3D processes were fully represented, and salt transport mechanisms were modeled with 3-dimensional fidelity. Many 1D modelling exercise have to resort on forced or analytical definitions of downstream salinity as they do not extend offshore. As salinity at the estuary mouth is highly variable with principal effect on SWI in the estuary, here, we do not compromise on artificially forced boundary conditions and can fully capture the interconnectivity of coastal-inland salinity dynamics in response to various forcings.

### 4.1 Three-dimensionality of SWI

The combination of variable external forcing in discharge, tide, wind etc., as well as large variations in geometry and bathymetry, and the fresh-saline water dynamics result in a wide range of estuarine characteristics around the globe (Dyer, 1997; Fischer, 1976; Geyer and MacCready, 2013; Valle-Levinson, 2010). These characteristics are projected in salt transport mechanisms that lead to the realized salt balance or saline water intrusion in these systems. These mechanisms can be more depth-averaged (2D) when buoyancy is limited or depth-varying (3D) when the system is more stratified. Examples of systems with more depth-averaged processes are Conwy Estuary, where salt transport is dominated by tidal pumping (Simpson et al., 2001), or the Guadalquivir Estuary where nontidal and Stokes transport mechanisms are the most important salt fluxes (Díez-Minguito et al., 2013). On the other hand, in a system such as the Columbia River Estuary salt transport is more dominated by quarter-diurnal signal (Mac Cready and Geyer, 2010) of tidal straining (Burchard and Hetland, 2010; Jay and Musiak, 1994; Jay and Smith, 1990a, 1990b), which is a three-dimensional process.

This study, for the first time, provides a coherent and integrated picture of salinity dynamics in the Mekong Delta and shows SWI within the delta has a 3D character with large variability on different temporal and spatial scales. Previously, estuarine salinity of the VMD was either measured stationary (Eslami et al., 2019b; Nowacki et al., 2015) or in along-channel snapshots during spring tide (Nguyen and Savenije, 2006). The estuarine salinity structure and its neap-spring variability was studied here for the first time. Estuarine stratification variability can have significant implications for 3D estuarine circulation (Jay and Smith, 1990a&b; Jay, 2010;). We showed that temporal changes in mixing, driven by the spring-neap cycle have dominant roles in SWI within the VMD. The gravitational circulation and other vertically sheared flows resulting from depth-varying

385 forcing dominate salt transport during the neap tide, and tidal straining becomes the significant process in transition to the spring tide, both of which are highly 3D processes. During the spring tide, the partially-to-fully mixed system acts more as a depth-averaged system, and generally flushes salt with non-tidal residual flow, predominantly a combination of river discharge and the return flow of the strong nonlinear Stokes transport. In short, we can say the system imports salt in a 3D fashion but flushes in a depth-averaged manner.

#### 4.2 Subtidal variability

390 It was shown that under low discharge regimes, ocean surge can travel hundreds of kilometers upstream (Henrie and Valle-Levinson, 2014) and influence discharge division in multi-channel estuarine systems (Eslami et al., 2019a), but its effect on SWI was not addressed before. This study quantifies the effect of ocean surge on SWI (up to 20% stationary or 10 km in intrusion length of subtidal depth-averaged salinity), along with other subtidal variations such as discharge and spring-neap variability. The salinity peaks of the VMD during the 2016 drought not only coincided with low discharge periods, but also to high surge events. While discharge variation inversely changes SWI in a relatively well-understood manner (Abood, 1974; Gong and Shen, 2011a; Monismith et al., 2002; Ralston et al., 2010), we could conclude from the sensitivity analysis that a positive surge increases SWI, but it was not directly clear from the sensitivity analyses with real forcing (e.g., Figure 7) how exactly ocean surge impacts SWI. To examine system response in time and space, a perturbation analysis with synthetic forcing was set up. A series of perturbation simulations (for the entire VMD) were run for 160 days with constant discharge (ranging from 3000 to 6000  $\text{m}^3\text{s}^{-1}$ ) and different tidal forcings (only  $M_2$ , only  $K_1$  or  $M_2+S_2$ ) to arrive at a stationary/equilibrium state. 400 These stationary states were then interrupted with perturbation of upstream discharge (in Kratie) or subtidal offshore water level. A positive/negative peak/trough of a 10-day discharge/surge wave was forced at the upstream/downstream boundary and the adaptation time and the salinity intrusion response were examined. Table 3 summarizes the list of 39 perturbation simulations.

Figure 10 summarizes the results of the perturbation analysis for the Dinh An channel, while similar trends could also be 405 observed in other channels, except lower My Tho distributary channels (see section 3.3). Generally, the system with diurnal tide (less mixing) experiences longer SWI length than a system with only semi-diurnal tide (more mixing), and the difference increases (from ~12 km to ~18 km) with decreasing discharge from 6 to 3  $\text{k m}^3 \text{ s}^{-1}$  (Figure 10a). Furthermore, as spring-neap variability increases maximum SWI compared to when the system is forced by only diurnal or semi-diurnal tide, the variations and sensitivity to spring-neap cycle increases non-linearly with lower discharge and longer SWI length. Figure 10b & c show the system response to upstream discharge (in Kratie) variation and Figure 10d & e show SWI adaptation to subtidal changes of coastal water levels. Both system responses are examined for conditions with only diurnal (b & d) or semi-diurnal tides (c & e). There is an immediate reaction to subtidal water level changes but the effect of discharge in Kratie is delayed nearly 2-3 days until the upstream wave reaches the delta. In response to subtidal variations (both upstream discharge or downstream surge), a semi-diurnal system (more mixing) adapts faster and returns quicker to stationary conditions than a diurnal system 415 (less mixing). In general, the longer the SWI, the slower it is to go back to its unperturbed conditions.

Estuarine response time to river discharge variation has been addressed by relating SWI length to a power law of river discharge  $L = \alpha Q_f^n$ ; with  $Q_f$  as discharge, and  $\alpha$  and  $n$  constants (Abood, 1974; Gong and Shen, 2011b; Monismith et al., 2002; Ralston et al., 2010). The lower Hau River, in terms of response to discharge showed similar behavior as Madaoman Estuary (one of the estuaries of the Pearl River Delta), scaling with  $n \approx -0.5$ . This value is smaller than those associated to estuaries such as Hudson River (-0.33), Skagit (-0.25) and Merrimack (-0.19) implying a more sensitive system to discharge variations. Furthermore, similar to previous observations (Gong and Shen, 2011b; Hetland and Geyer, 2004), the system has a slightly shorter response time to an increasing discharge (reducing SWI) than a decreasing discharge (increasing SWI). Finally, the net increase in SWI length due to a discharge trough is stronger than the net decrease due to a discharge peak.

The surge effect on SWI introduces a slightly different behavior in terms of estuarine response, which was not addressed previously. Generally, the adaptation time (17-20 days to a 10-day surge) is shorter under semi-diurnal (mixed) tidal regime than under diurnal (stratified) tidal forcing. Similar to discharge variation, under a diurnal (stratified) tidal forcing, up-estuary dispersive salt flux (by rising surge) is slower than down-estuary advective flux. This means that the system reacts slightly faster to the falling surge than a rising surge. However, as downs-estuary advective flux is stronger under a semi-diurnal tidal regime, adaptation time to a rising surge is slightly shorter than to a falling surge. As the SWI response to upstream discharge variation is delayed and peak-like, the response to downstream surge is immediate, but longer as it entails a secondary response in discharge in the second limb of the surge. This is interesting, because a subtidal water level trough can also temporarily increase SWI after it reduces that in the first response. Therefore, the system adaptation time to the surge is longer (up to 20 days). This is elaborated further in Figure 11, showing subtidal water level and discharge response to surge and discharge perturbation, upstream of the Dinh An channel in Can Tho. The rising upstream discharge translates to a simple rise in water level and discharge in Can Tho. However, a rising surge, However, a rising surge causes an upstream directed flow, decreasing local discharge, while a falling surge drives a seaward directed flow, resulting in a rising discharge. The rising surge increases SWI by increasing channel depth and superimposing a landward current, but due to its rebound effect on discharge in the falling limb, a rise in SWI is followed by a decline. This implies that the physical processes of the continental shelf are intrinsic components of the very same delta system influencing SWI in the delta. Therefore, 1D models that exclude this crucial part of the system (*e.g.*, Smajgl et al., 2015; Tran Quoc Dat et al., 2011; Vu et al., 2018), can be prone to significant errors.

### 4.3 Comparison to an analytical model

An alternative of a numerical model can be a simple analytical model. To test how well an analytical model can perform compared to a 3D modelling approach, we compared our results with the Savenije analytical model of (Savenije, 2012). This model relates the steady state along channel salinity profile to a varying dispersion coefficient that is a function of upstream salinity gradient. In simple, along channel salinity reads as:

$$S_i - S_f = c_i \frac{dS_i}{dx} \quad (4)$$

Where  $i$  indicates a state associated with high-water slack (HWS), Low-Water Slack (LWS) or Tidally Averaged (TA),  $S_i$  is the salinity and  $S_f$  is the freshwater salinity, and the coefficient  $c_i$  is defined as

$$450 \quad c_i = \frac{A}{Q_f} D_i \quad \text{with} \quad \frac{dD_i}{dx} = K \frac{Q_f}{A} \quad (5)$$

Here,  $A$  is the tidally averaged cross-sectional area,  $Q_f$  the river discharge,  $D_i$  the dispersion coefficient and  $K$  the Van der Burg's coefficient. Then by calibrating the model for  $K$  and  $D_{0,i}$  (dispersion coefficient at the estuary mouth,  $x = 0$ ), along-channel depth-averaged salinity associated with any of the three steady state conditions can be computed by:

$$\frac{S_i - S_f}{S_{0,i} - S_f} = \left( \frac{D_i}{D_{0,i}} \right)^{1/K} \quad (6)$$

455 Then, SWI length is calculated as:

$$L_i = a \ln \left( 1 + \frac{D_{0,i} A_0}{K a Q_f} \right), \quad (6)$$

Where  $a$  is e-folding length for channel cross-sectional area and  $A_0$  the cross-sectional area at the estuary mouth ( $x = 0$ ). Savenije (2012) also provides some predictive equations for  $K$  and  $D_{0,i}$ . These predictive equations use various parameters such as average channel depth  $h$ , tidal wave period  $T$ , tidal range  $H_0$  and flow velocity amplitude  $V_0$  at the boundary, etc. We  
 460 calibrated the dispersion parameters for our measurement campaign during the two HWS steady state conditions (Figure 12, upper panels) and apart from  $Q_f$  (varying as observed subtidal discharge in Can Tho) and  $T$  (varying between 12 and 18 from spring to neap tide), kept other parameters constant for the simulation period to have a fair comparison between the models. Note that along channel salinity profile calibrates well with 12 hours tidal wave period during the spring tide as the tidal signal is highly semi-diurnal. During neap tide, when the tidal signal is almost but not fully diurnal, the model calibrated better with  
 465 18 hours, which is shorter than the ~24-hour wave period of the diurnal tidal species.

Figure 12 shows the comparison for the Dinh An channel. The Savenije approach shows excellent correspondence with the HWS during spring tide and has a good performance during neap tide but overestimates the SWI length. The 3D model has a good performance for spring tide and while it has an accurate reproduction of the near-sea estuarine salinity, it underestimates SWI length. Both models deviate more if we look at the time series of SWI length and salinity. The Savenije model (computed  
 470 for tidally averaged along channel profile) is quite sensitive to changes in upstream discharge and most often has significantly larger SWI than the 3D model. Although we do not have time series of observed SWI length (Figure 12, middle panel), the comparison of salinity at a fixed station (Figure 12, lower panel) suggests that Savenije model is overpredicting the salinity quite often and is more variable in time than the 3D model and the observation data. Based on the comparison of salinity at a fixed station we conclude that the 3D model is doing a better job. Of course, this comes at a high computation cost. However,  
 475 when it comes to realistic representation of salinity in the delta (for example for salinity forecast or operational systems) a 3D approach is preferred over an analytical model, while for first order estimates and system response evaluation to changes in physical processes and trend analysis the analytical model is a powerful tool.

#### 4.4 Impact of riverbed level changes

480 Examples of increased SWI in response to riverbed level incision has been shown in other estuaries such as Hudson, Eems, Elbe, Loire, Schelde and Tanshui (Liu et al., 2004; Ralston and Geyer, 2019; Winterwerp and Wang, 2013). Had the riverbeds within the VMD remained at their 2008 elevations, the impact of SWI during the 2016 drought would have been significantly lower. The deeper channels activate/magnify 3D sub-processes of upstream salt transport that can increasingly amplify SWI. The VMD and many of its distributaries, occupy a wider area compared to *e.g.*, Hudson River, within the estuarine parameter space (Geyer and MacCready, 2013). Because of the spring-neap variability and discharge sensitivity to external forces, the wide range of the mixing parameter  $M$  (see Geyer and MacCready, 2013), ranging between 0.6-2, shifts the VMD between areas occupied by the Hudson River to the Columbia and Conwy River, etc. Unlike the Hudson River Estuary, where increased SWI could not be associated to gravitational circulation (Ralston and Geyer, 2019), here we quantify clear increase in gravitational circulation, as well as tidal straining, related to increased stratification. This implies that perhaps gravitational circulation and tidal straining tend to be more sensitive to depth variation in systems with higher spring-neap variability, compared to systems that tend to remain mixed or stratified in time. As the main driver of increased SWI Within the Ham Luong channel (as well as others), approximately 10 km additional SWI can directly be associated with riverbed level incision (Figure 13). Although changes in SWI is often associated to sea level rise and global climate change, this detailed study of salinity in an Asian mega-delta emphasizes that riverbed level changes, have been the key determinant of changes in SWI in the VMD (also see Eslami et al., 2019b).

#### 5 Conclusions

This study has provided new understanding into the physical processes that dominate SWI in the Mekong Delta. This was done by carrying out field measurements as well as applying a novel 2DV-3D numerical modelling of the entire Mekong Delta and a large part of its continental shelf (70 km offshore) that could reproduce various observed salinity patterns. This facilitated efficient integrated modelling of the shelf processes, estuarine channels, and the complicated irrigation system. Amid the 2016 drought and extreme SWI within the VMD, we measured estuarine salinity structure along two lower distributary channels of the Hau River. We observed significant estuarine variability between neap (strongly stratified) and spring (partially- to well-mixed) tides. It was shown that most of the estuarine channels of the VMD follow the strong spring-neap variability, except the lower My Tho distributary channels that demonstrate a more mixed system. We quantified that increased stratification during the neap tide leads to estuarine circulation dominating upstream salt transport during the neap tide. In transition to spring tide, tidal straining stimulates upstream salt flux but as we reach the spring tide, with increased mixing (reduced stratification), down-estuary advective salt flux dominates and flushes salinity. Studying salt fluxes showed that salt transport in the system is a 3D phenomenon.

Moreover, the system is significantly sensitive to external forces. This study, for the first time, showed that subtidal ocean surge can impact the temporal variation of salinity by up to 20%. During dry season, typical variations (20-40 cm) in surge



showed larger (5-10 km) impact on SWI than typical variations ( $1000-2000 \text{ m}^3 \text{ s}^{-1}$ ) in upstream discharge (2-5 km). The Mekong estuarine system demonstrated a short (a few days) flushing and transition times in response to subtidal variations (*e.g.*, ocean surge or discharge variations). A discharge pulse at Kratie (Cambodia) travels to the delta in 3-4 days and its effect lasts 3-4 days longer than the pulse itself. The ocean surge, however, leads to a near-immediate response in SWI and because  
515 of its rebound effect on discharge, its impact was felt twice longer than the surge period itself.

The complexity and three-dimensionality of salt transport mechanisms in this deltaic system demands a 3D model to capture the delicate temporal variations of upstream salt transport. The sensitivity of salinity on ocean-estuary interaction at the mouth, with the processes within the continental shelf highly impacting the estuarine system dynamics, this demands a model that extends far offshore to integrate both barotropic and baroclinic interactions of the inland-coastal system. Therefore, although  
520 analytical and 1D numerical models are useful for studying general trend dynamics, to analyse or forecast salinity within the delta, using a 3D integrated (inland-coastal) numerical domain that incorporates all processes is eventually inevitable.

This study also emphasizes on the importance of riverbed levels in controlling SWI. By modelling SWI during the dry season of 2016 with the recent (2018) and old (2008) bathymetries, we showed the significance of riverbed level changes on 3D processes of SWI within the VMD. Although upstream dams, by altering the hydrological cycle, do have significant impact  
525 on freshwater supply to the Mekong Delta, the delta itself is far more vulnerable to external forces (*e.g.*, drought) due to its deeper channels, driven by sediment deprivation from upstream dams, and shear amounts of sand mining within the delta. This is substantial further evidence that suggests riverbed levels are existential assets to preserve livelihood and the way of life within the Mekong Delta.

## 6 Data availability

DFlow-FM is an opensource numerical model <https://oss.deltares.nl/web/delft3dfm>. The underlying gauge data (observed water level, discharge, and salinity) provided by the SIWRP, following the organizational policy, can be provided upon request for non-commercial use. The wind data originally developed by NCEP/NOAA, can be downloaded from the DHI repository under <https://www.metocean-on-demand.com/#/main>. The geometry data of the network of primary and secondary channels can only be provided in direct communication with the SIWRP. The 2008 bathymetry data is partly received from the Mekong  
535 River Commission <https://portal.mrcmekong.org/data-catalogue> and partly received from the SIWRP and the 2018 contemporary bathymetry data can be downloaded from <https://hydra.hull.ac.uk/resources/hull:17952>. Nevertheless, all the data and models that cannot directly be accessed by the public can be provided to the reviewers for any validation or reproduction.

## 7 Video supplements

540 In preparation.

## 8 Author contribution

SEA coordinated efforts of various parties, carried out formal analysis, set up the salinity measurement field campaign and models, pre & post-processed and visualized the data and led the manuscript draft. PH and MVV were responsible for funding acquisition, supervision, and review of the research and manuscript. SEA, together with MVV and PH conceptualized the study. HK and AVD supported software application and conducted the required numerical model development/update at various stages. HK contributed to the writing and reviewed the paper, and AVD reviewed the final draft. GVP carried out the field measurement bathymetry and prepared the bathymetry for application in the modelling exercise and reviewed and edited the final manuscript. DDD provided resources and reviewed the findings and the writing, while NNT and TTQ supported the investigation, analysis, model set-up, and reviewed the findings and the writing. LB assisted during the field campaign, and for pre-processing and post-processing of the data, led the video abstract development and reviewed the final manuscript. NNH facilitated and coordinated the salinity and bathymetry measurement field campaigns and reviewed the final manuscript. SED and DRP facilitated the funding acquisition for the bathymetry field campaign, supervised the bathymetry development and contributed to the writing of the final manuscript.

**Acknowledgments:** We would like to show our gratitude to Mr Le Quan amongst other colleagues at SIWRR for their humble support during the field campaign and our stay in the city of Dai Ngai. Without their support, this study would not be possible. Special thanks to the personnel of the Southern Institute for Water Resources Planning (Ho Chi Minh City, Vietnam), for openly supporting the project during its development. We are grateful to Dr Jasper RFW Leuven for his support through the toughest times of the field campaign. We sincerely appreciate how DHI supported our research by generously providing us with wind, water level and velocity data in the coastal waters.

**Conflicts of Interest:** The authors declare they have no conflict of interest.

**Funding:** This research is part of the “Rise and Fall” project, funded by NWO-WOTRO (W 07.69.105), Urbanizing Deltas of the World-1 (UDW1). The 2018 bathymetric data were acquired with support from NERC, under two distinct projects referenced NE/S002847/1 and NE/P014704/1.

## References

- Abood, K. A.: Circulation in the Hudson estuary. In O. A. Roels (ed.), *Hudson River Colloquium*, , 250:38–111, 1974.
- Banas, N. S., Hickey, B. M., MacCready, P. and Newton, J. A.: Dynamics of Willapa Bay, Washington: A Highly Unsteady, Partially Mixed Estuary, *J. Phys. Oceanogr.*, 34(11), 2413–2427, doi:10.1175/JPO2637.1, 2004.
- Brunier, G., Anthony, E. J., Goichot, M., Provansal, M. and Dussouillez, P.: Recent morphological changes in the Mekong and Bassac river channels , *Mekong delta : The marked impact of river-bed mining and implications for delta destabilisation*, *Geomorphology*, 224, 177–191, doi:10.1016/j.geomorph.2014.07.009, 2014.
- Bucx, T., van Driel, W., de Boer, H., Graas, S., Langenberg, V T C; Marchand, M. and van de Guchte, C.: Comparative assessment of the vulnerability and resilience of deltas— extended version with 14 deltas—synthesis report, [online] Available

- from: <https://library.wur.nl/WebQuery/wurpubs/fulltext/344952>, 2014.
- Burchard, H. and Hetland, R. D.: Quantifying the Contributions of Tidal Straining and Gravitational Circulation to Residual  
575 Circulation in Periodically Stratified Tidal Estuaries, *J. Phys. Oceanogr.*, 40(6), 1243–1262, doi:10.1175/2010JPO4270.1, 2010.
- Buschman, F. A., Hoiting, A. J. F., van der Vegt, M. and Hoekstra, P.: Subtidal flow division at a shallow tidal junction, , 46, 2010.
- CGIAR Research Centers in Southeast Asia: The drought and salinity intrusion in the Mekong River Delta of Vietnam, Hanoi,  
580 Vietnam., 2016.
- Mac Cready, P. and Geyer, W. R.: *Advances in Estuarine Physics*, MC, 2, 35–58 [online] Available from: <http://www.annualreviews.org/toc/marine/2/1>, 2010.
- Díez-Minguito, M., Contreras, E., Polo, M. J. and Losada, M. a.: Spatio-temporal distribution, along-channel transport, and post-riverflood recovery of salinity in the Guadalquivir estuary (SW Spain), *J. Geophys. Res. Ocean.*, 118(5), 2267–2278,  
585 doi:10.1002/jgrc.20172, 2013.
- Doan, V. B., Kantoush, S., Sumi, T., Nguyen, P. M. and Vinh, L. V.: Field investigation on river bed changes and salinity intrusion along Tien and Hau Rivers in Vietnamese Mekong Delta considering upstream dams' impacts, in *DPRI Annuals*, Kyoto Univerisyt, Tokyo, Japan. [online] Available from: <http://www.dpri.kyoto-u.ac.jp/hapyo/18/>, 2018.
- Dyer, K.: *Estuaries, a physical introduction*, 2nd ed., John Wiley & Sons Ltd., 1997.
- 590 Echezuría, H., Córdova, J., González, M., González, V., Méndez, J. and Yanes, C.: Assessment of environmental changes in the Orinoco River delta, *Reg. Environ. Chang.*, 3(1), 20–35, doi:10.1007/s10113-001-0038-4, 2002.
- Eckart, C. H.: The equation of state of water and sea water at low temperatures and pressures, Part 2 of Properties of water, *Am. J. Sci.*, 256(4), 225–240, doi:10.2475/ajs.256.4.225, 1958.
- Erban, L. E., Gorelick, S. M. and Zebker, H. A.: Groundwater extraction , land subsidence , and sea-level rise in the Mekong  
595 Delta , Vietnam, *Environ. Res. Lett.*, 9(8), 084010, doi:10.1088/1748-9326/9/8/084010, 2014.
- Eslami, S., Hoekstra, P., Kernkamp, H., Trung, N. N., Duc, D. Do, Quang, T. T., Februarianto, M., Dam, A. Van and Vegt, M. van der: Flow Division Dynamics in the Mekong Delta: Application of a 1D-2D Coupled Model, *Water*, 11(4), doi:10.3390/w11040837, 2019a.
- Eslami, S., Hoekstra, P., Nguyen Trung, N., Ahmed Kantoush, S., Van Binh, D., Duc Dung, D., Tran Quang, T. and van der  
600 Vegt, M.: Tidal amplification and salt intrusion in the Mekong Delta driven by anthropogenic sediment starvation, *Sci. Rep.*, 9(1), 18746, doi:10.1038/s41598-019-55018-9, 2019b.
- Fan, H., He, D. and Wang, H.: Environmental consequences of damming the mainstream lancang-mekong river: A review, *Earth-Science Rev.*, 146(2), 77–91, doi:10.1016/j.earscirev.2015.03.007, 2015.
- Fischer, H. B.: Mixing and Dispersion in Estuaries, *Annu. Rev. Fluid Mech.*, 8(1), 107–133,  
605 doi:10.1146/annurev.fl.08.010176.000543, 1976.
- Geyer, W. R. and MacCready, P.: The Estuarine Circulation, *Annu. Rev. Fluid Mech.*, 46(August 2013), 130829112240001,

- doi:10.1146/annurev-fluid-010313-141302, 2013.
- Godin, G.: The analysis of tides, University of Toronto, Toronto., 1972.
- Gong, W. and Shen, J.: The response of salt intrusion to changes in river discharge and tidal mixing during the dry season in the Modaomen Estuary, China, *Cont. Shelf Res.*, 31(7), 769–788, doi:<https://doi.org/10.1016/j.csr.2011.01.011>, 2011a.
- 610 Gong, W. and Shen, J.: The response of salt intrusion to changes in river discharge and tidal mixing during the dry season in the Modaomen Estuary, China, *Cont. Shelf Res.*, 31(7–8), 769–788, doi:10.1016/j.csr.2011.01.011, 2011b.
- Gugliotta, M., Saito, Y., Nguyen, V. L., Ta, T. K. O., Nakashima, R., Tamura, T., Uehara, K., Katsuki, K. and Yamamoto, S.: Process regime, salinity, morphological, and sedimentary trends along the fluvial to marine transition zone of the mixed-energy Mekong River delta, Vietnam, *Cont. Shelf Res.*, 147(March), 7–26, doi:10.1016/j.csr.2017.03.001, 2017.
- 615 Hansen, D. V. and Rattray, M.: Gravitational circulation in straits and estuaries, *J. Mar. Res.*, 23, 104–122, doi:10.1098/rspb.2009.2214, 1965.
- Henrie, K. and Valle-Levinson, A.: Subtidal variability in water levels inside a subtropical estuary, *J. Geophys. Res. Ocean.*, 119(11), 7483–7492, doi:10.1002/2014JC009829, 2014.
- 620 Hetland, R. D. and Geyer, W. R.: An Idealized Study of the Structure of Long, Partially Mixed Estuaries, *J. Phys. Oceanogr.*, 34(12), 2677–2691, doi:10.1175/JPO2646.1, 2004.
- Hoepfner, S. S., Shaffer, G. P. and Perkins, T. E.: Through droughts and hurricanes: Tree mortality, forest structure, and biomass production in a coastal swamp targeted for restoration in the Mississippi River Deltaic Plain, *For. Ecol. Manage.*, 256(5), 937–948, doi:<https://doi.org/10.1016/j.foreco.2008.05.040>, 2008.
- 625 Hung Van Pham, Van Geer, F. C., Bui Tran, V., Dubelaar, W. and Oude Essink, G. H. P.: Paleo-hydrogeological reconstruction of the fresh-saline groundwater distribution in the Vietnamese Mekong Delta since the late Pleistocene, *J. Hydrol. Reg. Stud.*, 23, 100594, doi:<https://doi.org/10.1016/j.ejrh.2019.100594>, 2019.
- IFRC: Vietnam - Drought and Saltwater Intrusion Emergency Plan of Action, Situation Report, [online] Available from: <https://reliefweb.int/report/viet-nam/vietnam-drought-and-saltwater-intrusion-emergency-plan-action-epoa-dref-operation-0>,
- 630 2020.
- Jay, D. a. and Musiak, J. D.: Particle trapping in estuarine tidal flows, *J. Geophys. Res.*, 99(C10), 20445, doi:10.1029/94JC00971, 1994.
- Jay, D. a. and Smith, J. D.: Residual circulation in shallow estuaries: 1. Highly stratified, narrow estuaries, *J. Geophys. Res.*, 95, 711, doi:10.1029/JC095iC01p00711, 1990a.
- 635 Jay, D. A.: Estuarine variability, in *Contemporary Issues in Estuarine Physics*, edited by A. Valle-Levinson, pp. 62–99, Cambridge University Press., 2010.
- Jay, D. A. and Dungan Smith, J.: Circulation, density distribution and neap-spring transitions in the Columbia River Estuary, *Prog. Oceanogr.*, 25(1), 81–112, doi:[https://doi.org/10.1016/0079-6611\(90\)90004-L](https://doi.org/10.1016/0079-6611(90)90004-L), 1990.
- Jay, D. A. and Smith, J. D.: Residual circulation in shallow estuaries: 2. Weakly stratified and partially mixed, narrow estuaries,
- 640 *J. Geophys. Res. Ocean.*, 95(C1), 733–748, doi:10.1029/JC095iC01p00733, 1990b.

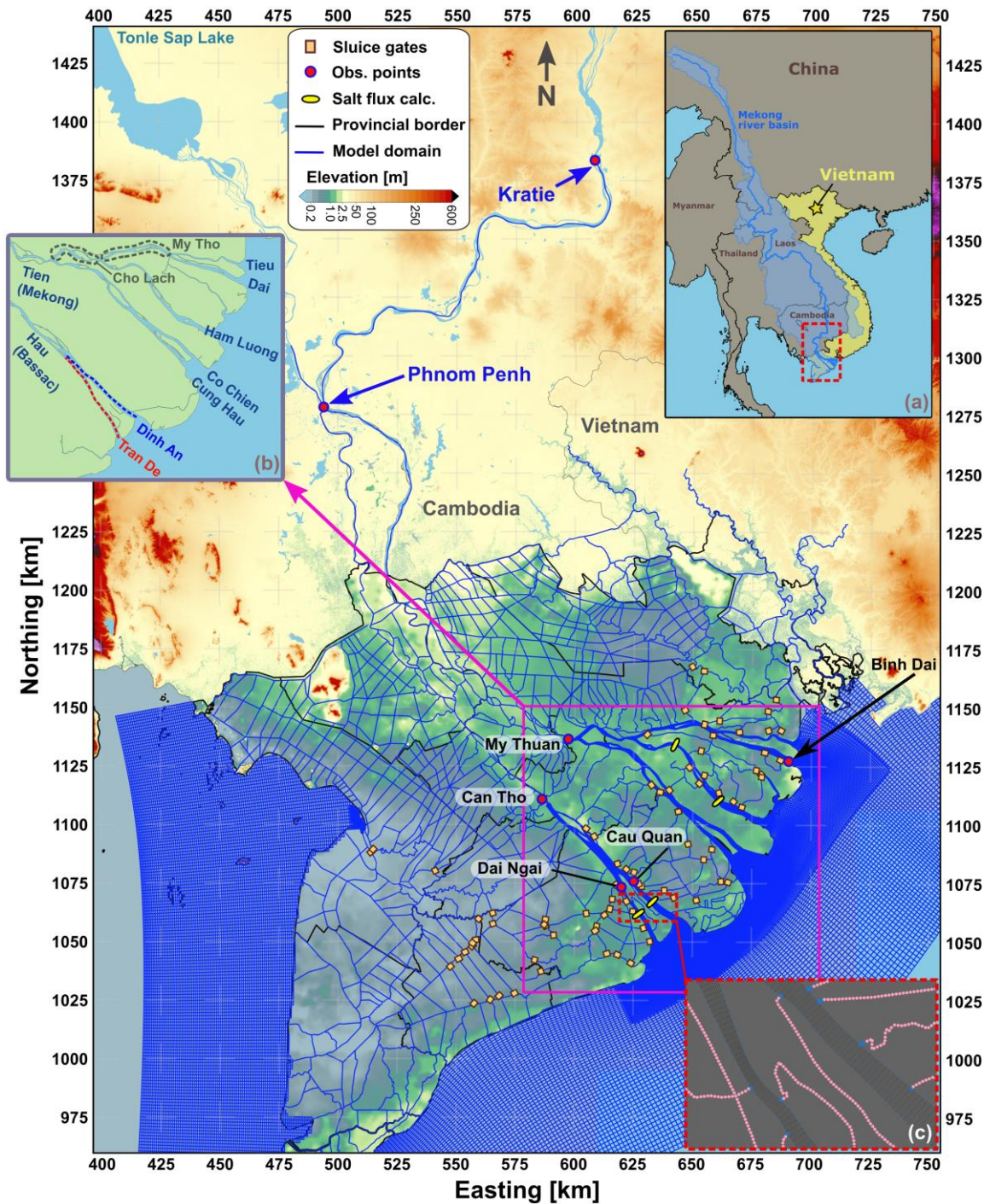
- Kantoush, S., Binh, D. van, Sumi, T. and Trung, L. V.: Impact of upstream hydropower dams and climate change on hydrodynamics of Vietnamese Mekong Delta, *J. Japan Soc. Civ. Eng. Ser. B1 (Hydraulic Eng., 73(4)*, 109–114, doi:10.2208/jscejhe.73.I\_109, 2017.
- 645 Kernkamp, H. W. J., Van Dam, A., Stelling, G. S. and De Goede, E. D.: Efficient scheme for the shallow water equations on unstructured grids with application to the Continental Shelf, *Ocean Dyn.*, 61(8), 1175–1188, doi:10.1007/s10236-011-0423-6, 2011.
- KHANG, N. D., KOTERA, A., SAKAMOTO, T. and YOKOZAWA, M.: Sensitivity of Salinity Intrusion to Sea Level Rise and River Flow Change in Vietnamese Mekong Delta-Impacts on Availability of Irrigation Water for Rice Cropping, *J. Agric. Meteorol.*, 64(3), 167–176, doi:10.2480/agrmet.64.3.4, 2008.
- 650 Koehnken, L.: Discharge Sediment Monitoring Project (DSMP) 2009 - 2013: Summary & Analysis of Results Final Report, Mekong River Commission, Vientiane, Lao PDR. [online] Available from: [http://portal.mrcmekong.org/assets/documents/Report-workshop/Technical-Report\\_DSMP/DSMP-Report-2009\\_13-Final-Report-July-2014.pdf](http://portal.mrcmekong.org/assets/documents/Report-workshop/Technical-Report_DSMP/DSMP-Report-2009_13-Final-Report-July-2014.pdf), 2014.
- Kondolf, G. M., Rubin, Z. K. and Minear, J. T.: Dams on the Mekong: Cumulative sediment starvation, *Water Resour. Res.*, 655 doi:10.1002/2013WR014651, 2014.
- Kondolf, G. M., Schmitt, R. J. P., Carling, P., Darby, S., Arias, M., Bizzi, S., Castelletti, A., Cochrane, T. A., Gibson, S., Kummu, M., Oeurng, C., Rubin, Z. and Wild, T.: Changing sediment budget of the Mekong: Cumulative threats and management strategies for a large river basin, *Sci. Total Environ.*, 625, 114–134, doi:10.1016/j.scitotenv.2017.11.361, 2018.
- Kramer, S. C. and Stelling, G. S.: A conservative unstructured scheme for rapidly varied flows, *Int. J. Numer. Methods Fluids*, 660 58(2), 183–212, doi:10.1002/flid.1722, 2008.
- Kumiko, T., Takao, M. and Toru, M.: Seasonal changes in radiation and evaporation implied from the diurnal distribution of rainfall in the Lower Mekong, *Hydrol. Process.*, 22(9), 1257–1266, doi:10.1002/hyp, 2008.
- Kummu, M., Lu, X. X., Wang, J. J. and Varis, O.: Basin-wide sediment trapping efficiency of emerging reservoirs along the Mekong, *Geomorphology*, 119(3–4), 181–197, doi:10.1016/j.geomorph.2010.03.018, 2010.
- 665 Kummu, M., Tes, S., Yin, S., Adamson, P., Józsa, J., Koponen, J., Richey, J. and Sarkkula, J.: Water balance analysis for the Tonle Sap Lake-floodplain system, *Hydrol. Process.*, 28(4), 1722–1733, doi:10.1002/hyp.9718, 2014.
- Lerczak, J. A., Geyer, W. R. and Ralston, D. K.: The Temporal Response of the Length of a Partially Stratified Estuary to Changes in River Flow and Tidal Amplitude, *J. Phys. Oceanogr.*, 39(4), 915–933, doi:10.1175/2008JPO3933.1, 2009.
- Lewis, R. E. and Lewis, J. O.: The principal factors contributing to the flux of salt in a narrow, partially stratified estuary, 670 *Estuar. Coast. Shelf Sci.*, 16(6), 599–626, doi:10.1016/0272-7714(83)90074-4, 1983.
- Li, D., Long, D., Zhao, J., Lu, H. and Hong, Y.: Observed changes in flow regimes in the Mekong River basin, *J. Hydrol.*, 551, 217–232, doi:10.1016/j.jhydrol.2017.05.061, 2017.
- Liu, W.-C., Hsu, M.-Hs., Wu, C.-R. and Y.Kuo, A.: Modeling Salt Water Intrusion in Tanshui River Estuarine System - Case Study Contrasting Now and Then, , 130, 849–859, 2004.

- 675 Lu, X. X., Li, S., Kummu, M., Padawangi, R. and Wang, J. J.: Observed changes in the water flow at Chiang Saen in the lower Mekong: Impacts of Chinese dams?, *Quat. Int.*, 336, 145–157, doi:10.1016/j.quaint.2014.02.006, 2014.
- Manh, N. Van, Dung, N. V., Hung, N. N., Kummu, M., Merz, B. and Apel, H.: Future sediment dynamics in the Mekong Delta floodplains: Impacts of hydropower development, climate change and sea level rise, *Glob. Planet. Change*, 127(January), 22–33, doi:10.1016/j.gloplacha.2015.01.001, 2015.
- 680 Martyr-koller, R. C., Kernkamp, H. W. J., Dam, A. Van and Wegen, M. Van Der: Application of an unstructured 3D finite volume numerical model to flows and salinity dynamics in the San Francisco Bay-Delta, *Estuar. Coast. Shelf Sci.*, 192, 86–107, doi:10.1016/j.ecss.2017.04.024, 2017.
- Mekong River Commission: State of the Basin Report 2010., 2010.
- Minderhoud, P. S. J., Erkens, G., Pham, V. H., Bui, V. T., Erban, L., Kooi, H. and Stouthamer, E.: Impacts of 25 years of groundwater extraction on subsidence in the Mekong delta, Vietnam, *Environ. Res. Lett.*, 12(6), doi:10.1088/1748-9326/aa7146, 2017.
- 685 Minderhoud, P. S. J., Coumou, L., Erkens, G., Middelkoop, H. and Stouthamer, E.: Mekong delta much lower than previously assumed in sea-level rise impact assessments, *Nat. Commun.*, 10(1), 3847, doi:10.1038/s41467-019-11602-1, 2019.
- Monismith, S. G., Kimmerer, W., Burau, J. R. and Stacey, M. T.: Structure and Flow-Induced Variability of the Subtidal Salinity Field in Northern San Francisco Bay, *J. Phys. Oceanogr.*, 32(11), 3003–3019, doi:10.1175/1520-0485(2002)032<3003:SAFIVO>2.0.CO;2, 2002.
- 690 MRC: Assessment of Basin-wide Development Scenarios, Basin Dev. Plan Program. Phase 2, (April), doi:0803973233, 2011.
- Nash, J. E. and Sutcliffe, J. V.: River Flow Forecasting Through Conceptual Models Part I-a Discussion of Principles\*, *J. Hydrol.*, 10, 282–290, doi:10.1016/0022-1694(70)90255-6, 1970.
- 695 Nguyen, A. D. and Savenije, H. H. G.: Salt intrusion in multi-channel estuaries: a case study in the Mekong Delta, Vietnam, *HESS*, 10, 743–754, 2006.
- Nguyen, A. D., Savenije, H. H. G., Pham, D. N. and Tang, D. T.: Using salt intrusion measurements to determine the freshwater discharge distribution over the branches of a multi-channel estuary: The Mekong Delta case, *Estuar. Coast. Shelf Sci.*, 77(3), 433–445, doi:10.1016/j.ecss.2007.10.010, 2008.
- 700 Nguyen, T. V and Tanaka, H.: Study on the Effect of Morphology Change on Salinity Distribution in the Dinh An Estuary, Lower Mekong River of Vietnam, *J. Coast. Res.*, 268–272 [online] Available from: <http://www.jstor.org/stable/26481596>, 2007.
- Nguyen, Y. T. B., Kamoshita, A., Dinh, V. T. H., Matsuda, H. and Kurokura, H.: Salinity intrusion and rice production in Red River Delta under changing climate conditions, *Paddy Water Environ.*, 15(1), 37–48, doi:10.1007/s10333-016-0526-2, 2017.
- 705 Nichols, M. and Biggs, R.: Estuaries, in *Coastal Sedimentary environment*, edited by Richard A. Davis, pp. 77–186, Springer-Verlag., 1985.
- Nowacki, D. J., Ogston, A. S., Nittrouer, C. A., Fricke, A. T. and Van, P. D. T.: Sediment dynamics in the lower Mekong River: Transition from tidal river to estuary, *J. Geophys. Res. C Ocean.*, 120(9), 6363–6383, doi:10.1002/2015JC010754,

- 2015.
- 710 Prandle, D.: Salinity intrusion in partially mixed estuaries, *Estuar. Coast. Shelf Sci.*, 59, 385–397, 2004.
- Prichard, D. W.: Structure of Coastal Plain Estuary, *J. Mar. Res.*, 33–42, 1956.
- Rabbani, G., Rahman, A. and Mainuddin, K.: Salinity-induced loss and damage to farming households in coastal Bangladesh, *Int. J. Glob. Warm.*, 5(4), 400–415, doi:10.1504/IJGW.2013.057284, 2013.
- Ralston, D. K. and Geyer, W. R.: Response to Channel Deepening of the Salinity Intrusion, Estuarine Circulation, and
- 715 Stratification in an Urbanized Estuary, *J. Geophys. Res. Ocean.*, 0(0), doi:10.1029/2019JC015006, 2019.
- Ralston, D. K., Geyer, W. R. and Lerczak, J. A.: Structure, variability, and salt flux in a strongly forced salt wedge estuary, *J. Geophys. Res. Ocean.*, 115(C6), doi:10.1029/2009JC005806, 2010.
- Räsänen, T. A., Someth, P., Lauri, H., Koponen, J., Sarkkula, J. and Kummu, M.: Observed river discharge changes due to hydropower operations in the Upper Mekong Basin, *J. Hydrol.*, 545, 28–41, doi:10.1016/j.jhydrol.2016.12.023, 2017.
- 720 Rodi, W.: Turbulence models and their application in hydraulics: A state-of-the-art review, third edition., 1993.
- Sassi, M. G., Hoitink, A. J. F., De Brye, B., Vermeulen, B. and Deleersnijder, E.: Tidal impact on the division of river discharge over distributary channels in the Mahakam Delta, *Ocean Dyn.*, 61(12), 2211–2228, doi:10.1007/s10236-011-0473-9, 2011.
- Savenije, H. H. G.: A one-dimensional model for salinity intrusion in alluvial estuaries, *J. Hydrol.*, 85(1–2), 87–109, doi:10.1016/0022-1694(86)90078-8, 1986.
- 725 Savenije, H. H. G.: Salinity and tides in alluvial estuaries, Elsevier, Amsterdam., 2005.
- Savenije, H. H. G.: Salinity and tides in alluvial estuaries, 2nd ed., 2012.
- Simpson, J., Brown, J., Matthews, J. and Allen, G.: Tidal straining, density currents, and stirring in the control of estuarine stratification, *Estuaries*, 13, 125–32, 1990.
- Simpson, J. H., Vennell, R. and Souza, A. J.: The Salt Fluxes in a Tidally-Energetic Estuary, *Estuar. Coast. Shelf Sci.*, 52(1),
- 730 131–142, doi:https://doi.org/10.1006/ecss.2000.0733, 2001.
- Smajgl, A., Toan, T. Q., Nhan, D. K., Ward, J., Trung, N. H., Tri, L. Q., Tri, V. P. D. and Vu, P. T.: Responding to rising sea levels in the Mekong Delta, *Nat. Clim. Chang.*, 5(2), 167–174, doi:10.1038/nclimate2469, 2015.
- Takeda, M., Laphimsing, A. and Putthividhya, A.: Dry season water allocation in the Chao Phraya River basin, Thailand, *Int. J. Water Resour. Dev.*, 32(2), 321–338, doi:10.1080/07900627.2015.1055856, 2016.
- 735 Thi Ha, D., Ouillon, S. and Van Vinh, G.: Water and Suspended Sediment Budgets in the Lower Mekong from High-Frequency Measurements (2009–2016), *Water*, 10(7), doi:10.3390/w10070846, 2018.
- Tran Anh, D., Hoang, P. L., Bui, D. M. and Rutschmann, P.: Simulating Future Flows and Salinity Intrusion Using Combined One- and Two-Dimensional Hydrodynamic Modelling—The Case of Hau River, Vietnamese Mekong Delta, *Water*, 10(7), doi:10.3390/w10070897, 2018.
- 740 Tran Quoc Dat, Nguyen Hieu Trung, Likitdecharote, K. and Srisatit, T.: Modeling the Influence of River Discharge and Sea Level Rise on Salinity Intrusion in Mekong Delta, Bangkok, Thailand., 2011.
- Uncles, R. J., Elliott, R. C. A. and Weston, S. A.: Observed fluxes of water, salt and suspended sediment in a partly mixed

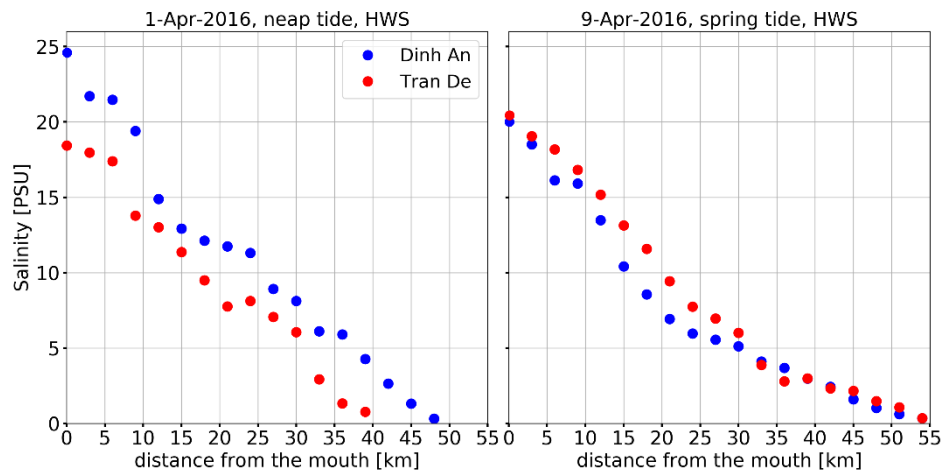
- estuary, *Estuar. Coast. Shelf Sci.*, 20(2), 147–167, doi:[https://doi.org/10.1016/0272-7714\(85\)90035-6](https://doi.org/10.1016/0272-7714(85)90035-6), 1985.
- UNDP-Vietnam: Vietnam Drought and Saltwater Intrusion: Transitioning from Emergency to Recovery. Analysis Report and  
745 Policy Implications. [online] Available from: <https://reliefweb.int/report/viet-nam/viet-nam-drought-and-saltwater-intrusion-situation-update-no-2-14-april-2016>, 2016.
- UNESCO: The Practical Salinity Scale 1978 and the International Equation of State of Seawater 1980, *Unesco Tech. Pap. Mar. Sci.*, 36, 1981.
- United Nations Resident Coordinator-Vietnam: Vietnam: Drought and Saltwater Intrusion Situation Update No. 2 (as of 14  
750 April 2016). [online] Available from: <https://reliefweb.int/report/viet-nam/viet-nam-drought-and-saltwater-intrusion-situation-update-no-2-14-april-2016>, 2016.
- Valle-Levinson, A.: Contemporary issues in Estuarine physics, Cambridge University Press., 2010.
- Vasilopoulos, G., Quan, Q., Parsons, D., Darby, S., Tri, V., Hung, N., Haigh, I., Voepel, H., Nicholas, A. and Aalto, R.: Anthropogenic sediment starvation forces tidal dominance in a mega-delta, *Res. Sq.*, doi:<https://doi.org/10.21203/rs.3.rs-81555/v1>, 2020.  
755
- Vu, D. T., Yamada, T. and Ishidaira, H.: Assessing the impact of sea level rise due to climate change on seawater intrusion in Mekong Delta, Vietnam, *Water Sci. Technol.*, 77(6), 1632–1639, doi:10.2166/wst.2018.038, 2018.
- Warner, J. C., Geyer, W. R. and Lerczak, J. a.: Numerical modeling of an estuary: A comprehensive skill assessment, *J. Geophys. Res. C Ocean.*, 110(5), 1–13, doi:10.1029/2004JC002691, 2005.
- 760 Winterwerp, J. C. and Wang, Z. B.: Man-induced regime shifts in small estuaries—I: theory, *Ocean Dyn.*, 63(11), 1279–1292, doi:10.1007/s10236-013-0662-9, 2013.
- Zia, I., Zafar, H., Shahzad, M. I., Meraj, M. and Kazmi, J. H.: Assessment of sea water inundation along Daboo creek area in Indus Delta Region, Pakistan, *J. Ocean Univ. China*, 16(6), 1055–1060, doi:10.1007/s11802-017-3350-4, 2017.





765

Figure 1: Digital elevation map of the Mekong Delta (Minderhoud et al., 2019) and the numerical domain developed for this study and the observation points and the studied cross-sections; a) an overview of the Mekong River Basin and the Mekong Delta (b) the salinity measurement trajectories along Dinh An and Tran De channels (red dotted lines) and the names of estuarine distributary channels (c) top-view of part of the 2DV-3D grid



770

**Figure 2: Observed salt intrusion at High Water Slack (HWS), during two consecutive neap (left) and spring (right) tides along the two lower Song Hau distributary channels (Dinh An and Tran De), during the 2016 VMD drought event**

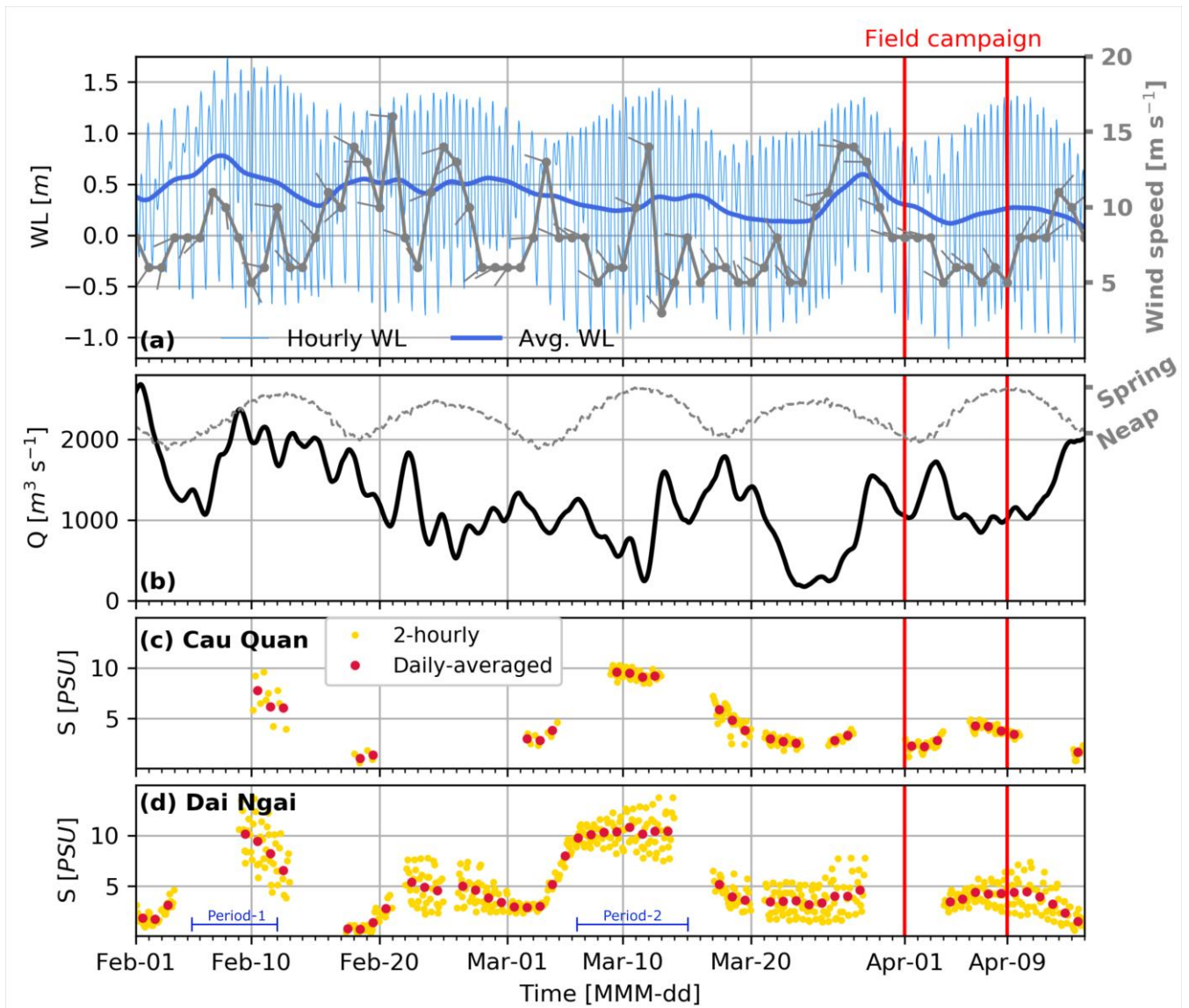


Figure 3: Water level at Can Tho (80 km from the estuary mouth) and offshore ocean wind speed and direction (a), subtidal discharge at Can Tho (b), and stationary salinity measurements in the lower distributary channels of the Hau River, Dinh An channel (c) and Tran De channel (d) prior and during the field campaign.

775



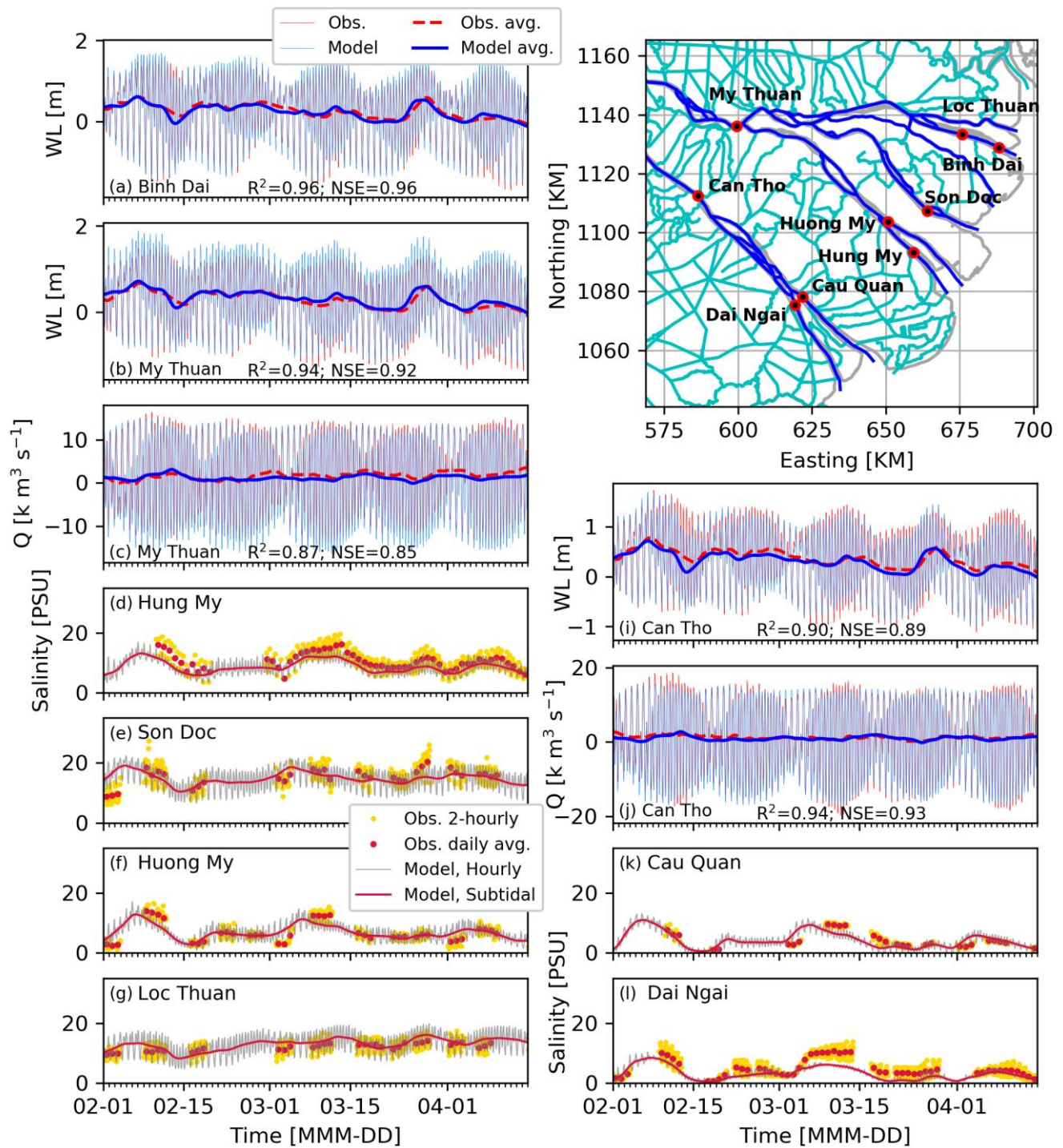
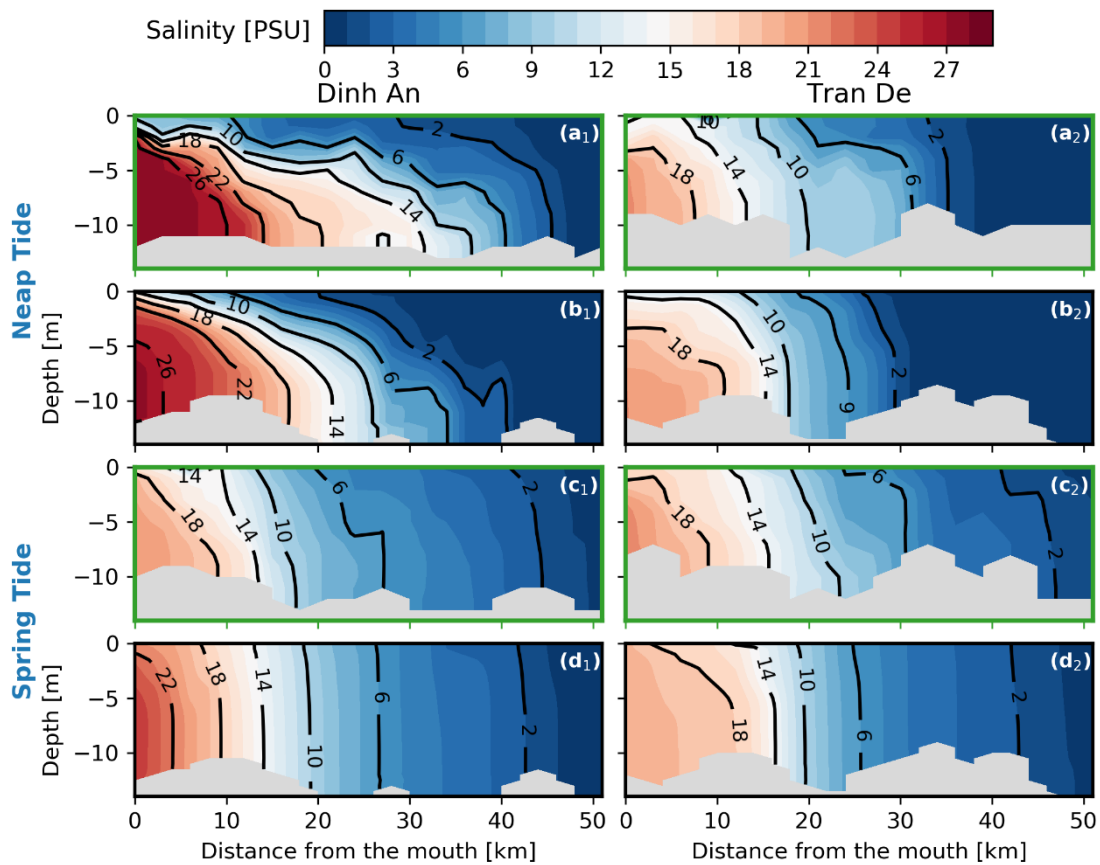
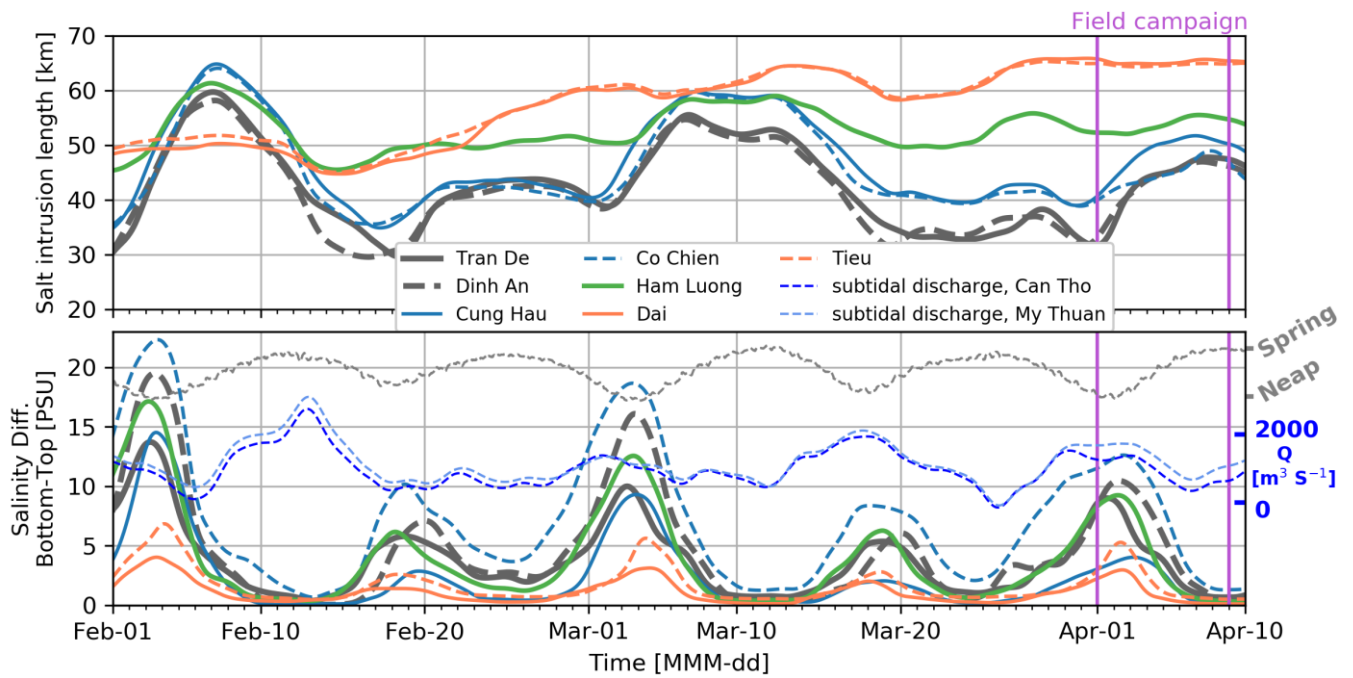


Figure 4, Model results versus observed stationary water level, discharge and salinity measurements at multiple stations across the Mekong Delta



780

Figure 5, Measured (a & c panels with green frames) versus modelled (b & d panels) HWS salinity structure along two distributary channels of the Hau River during Neap tide (a & b panels, Apr.-1<sup>st</sup>) versus spring tide (c & d panels, Apr.-9<sup>th</sup>) of the year 2016



785 **Figure 6, Modelled salt intrusion length along seven estuarine distributary channels of the Mekong (upper) and over-depth salinity difference, at a point along the thalweg, ~15 km from each estuarine distributary channel (lower)**

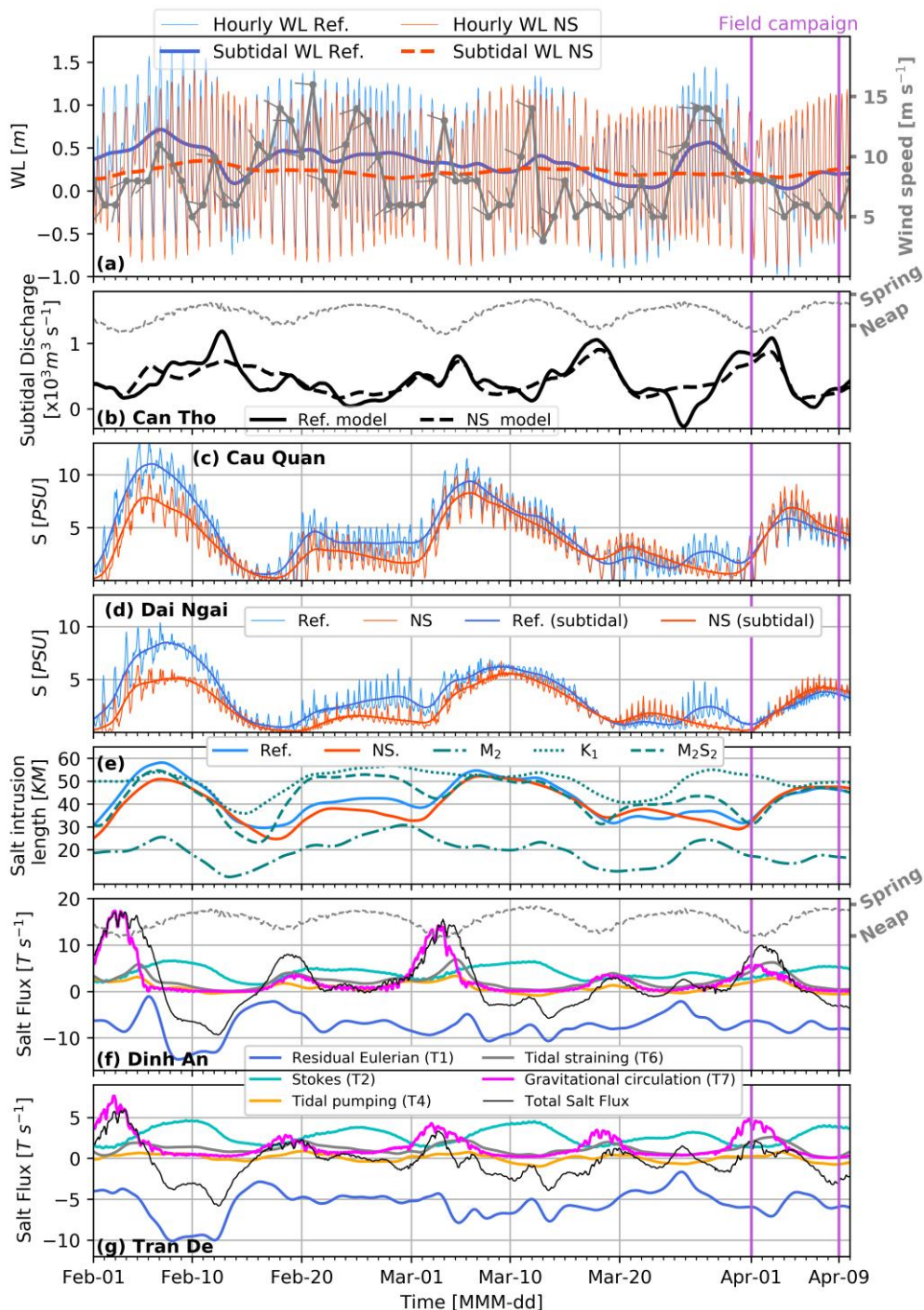
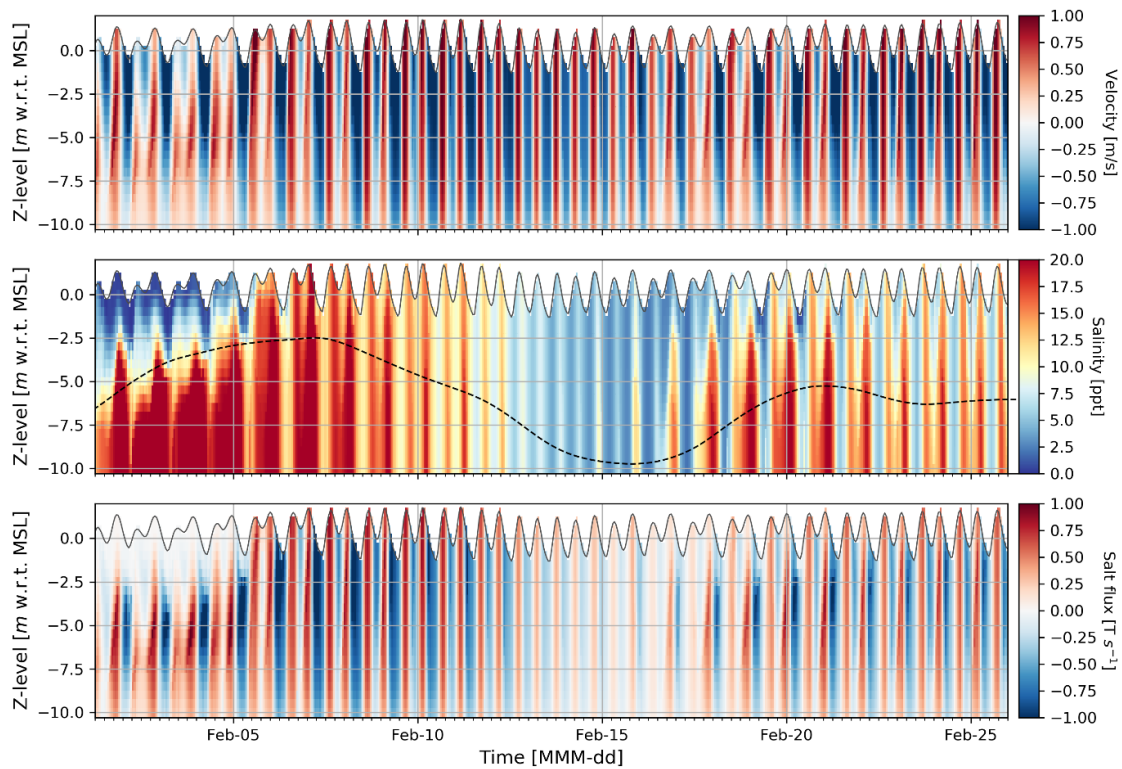


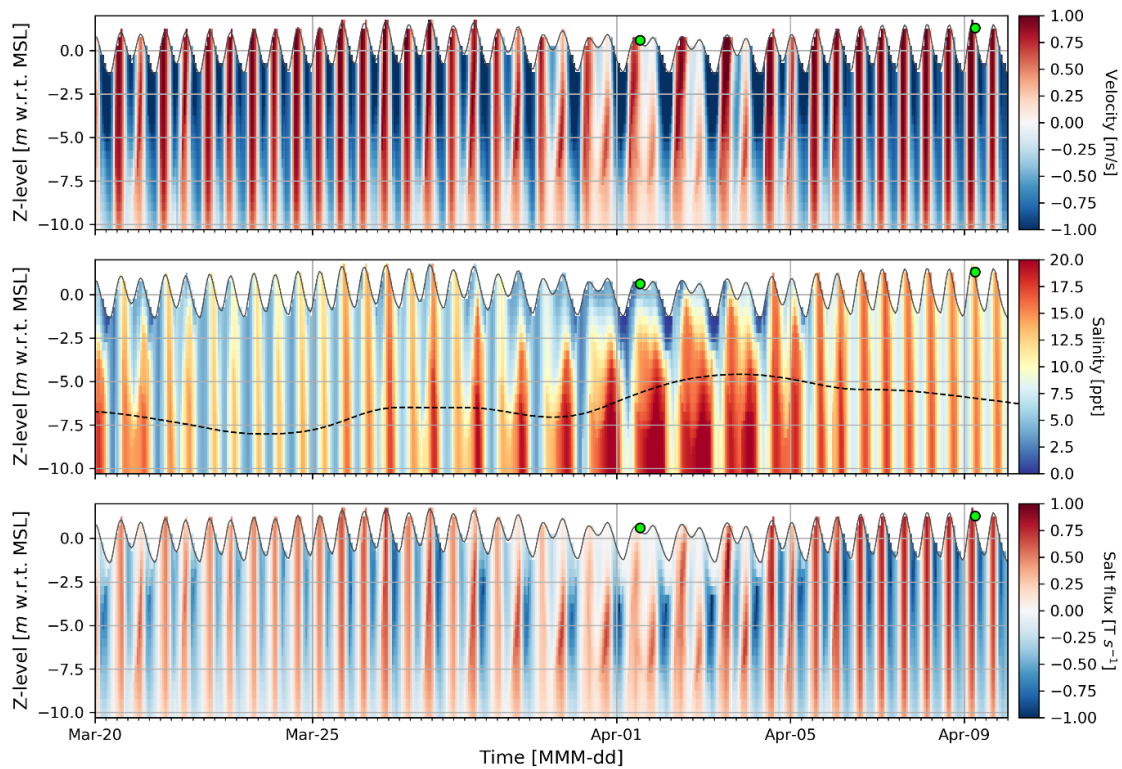
Figure 7, Comparison of the reference model (Ref.) including the ocean surge and the No-Surge (NS) model excluding the ocean surge for (a) water level (b) discharge; c & d show salinity in Dinh An and Tran De channels respectively; (e) salt intrusion length in time along the distributary of the Hau River in the Reference (Ref.) model in comparison to NS (No-Surge), M<sub>2</sub> (only including the M<sub>2</sub> tidal constituent) and the M<sub>2</sub>S<sub>2</sub> (replicating a spring-neap cycle) models; f & g show various salt fluxes (positive upstream) in Dinh An and Tran De respectively at cross-sections 15 km from the estuary mouth in the reference simulation.





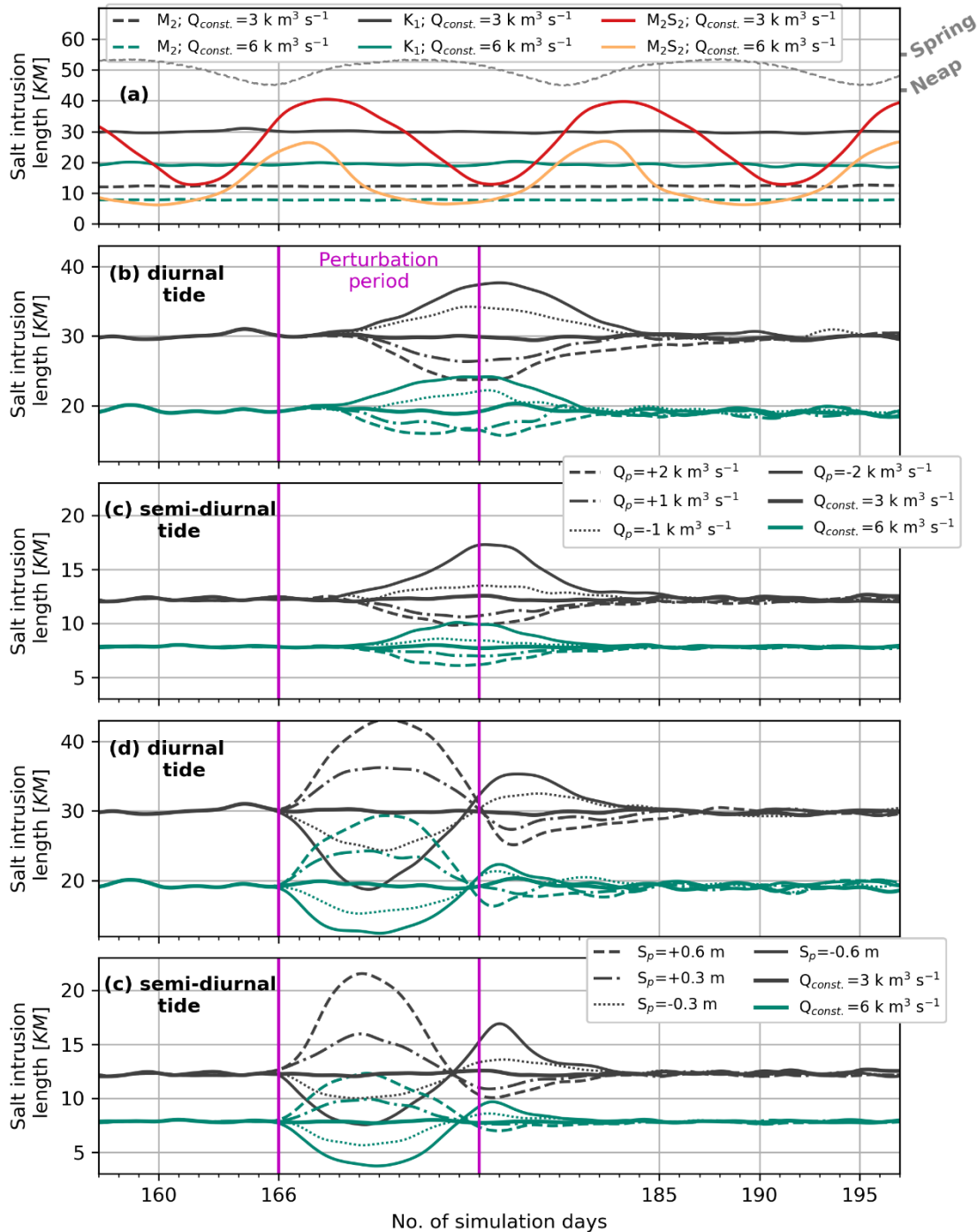
795 **Figure 8, Modelled temporal stationary estuarine variability at a point 15 km from the sea in the Dinh An channel in period-1 (maximum salinity); Upper panel: velocity profile in time; Middle panel: salinity profile in time (15 km from the sea) and subtidal depth-averaged salinity at Cau Quan in dashed black line scaled with the right y-axis (the right y-axis shares the labels with the colorbar); Lower panel: salt flux (product of salinity and velocity in a grid cell at a point along the thalweg)**



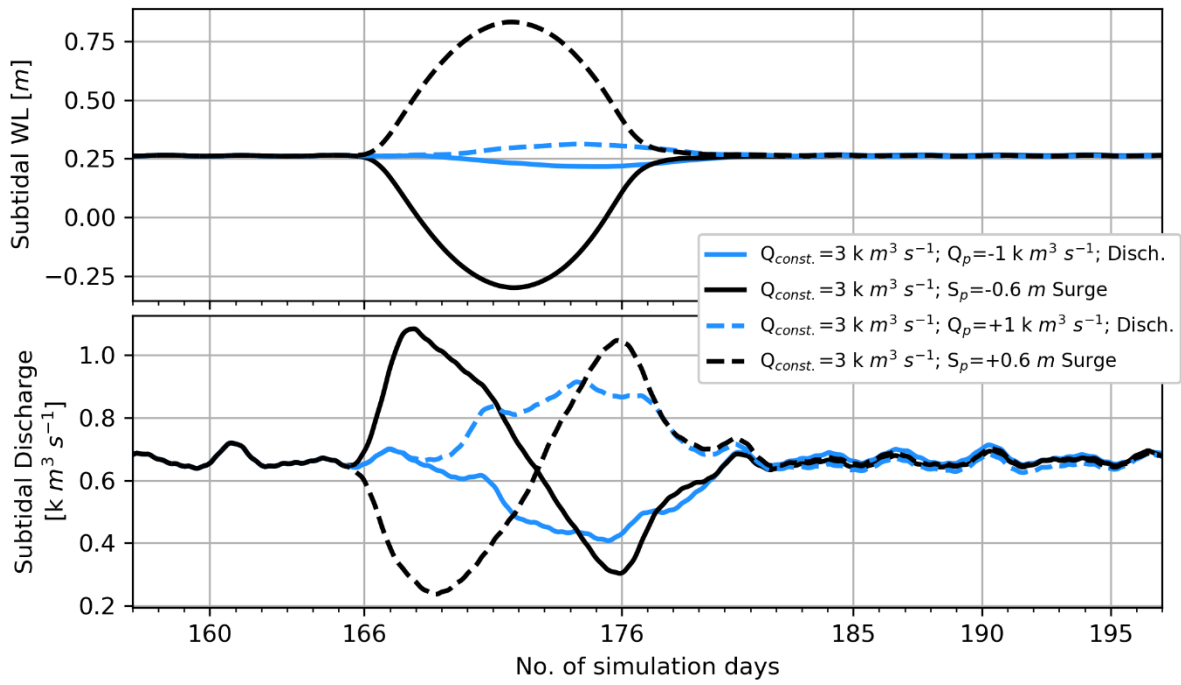


800

**Figure 9, Modelled temporal stationary estuarine variability at a point 15 km from the sea in the Dinh An channel in period-2 (field campaign); Upper panel: velocity profile in time with the green circles marking the measurement stances of the field campaign along the Dinh AN channel; Middle panel: salinity profile in time (15 km from the sea) and depth-averaged salinity at Cau Quan in dashed black line scaled with the right y-axis (the right y-axis shares the labels with the colorbar); Lower panel: salt flux (product of salinity and velocity) in a grid cell, at a point along the thalweg)**



805 **Figure 10, Comparison of temporal variation of salt intrusion length along the Dinh An channel for models with (a) constant discharge including a spring-neap cycle ( $M_2S_2$ ) and excluding spring-neap cycle with only semi-diurnal ( $M_2$ ) or diurnal ( $K_1$ ) tidal species; depicting the salt intrusion response along the Dinh An channel, in time and space to (b) a 10-day discharge perturbation from upstream (c) a 10-day subtidal offshore sea level perturbation when salt intrusion is in stationary conditions in models with constant discharge excluding spring-neap cycles.**



810 Figure 11, Upstream (in Can Tho) subtidal water level and discharge response to variation in discharge and surge level

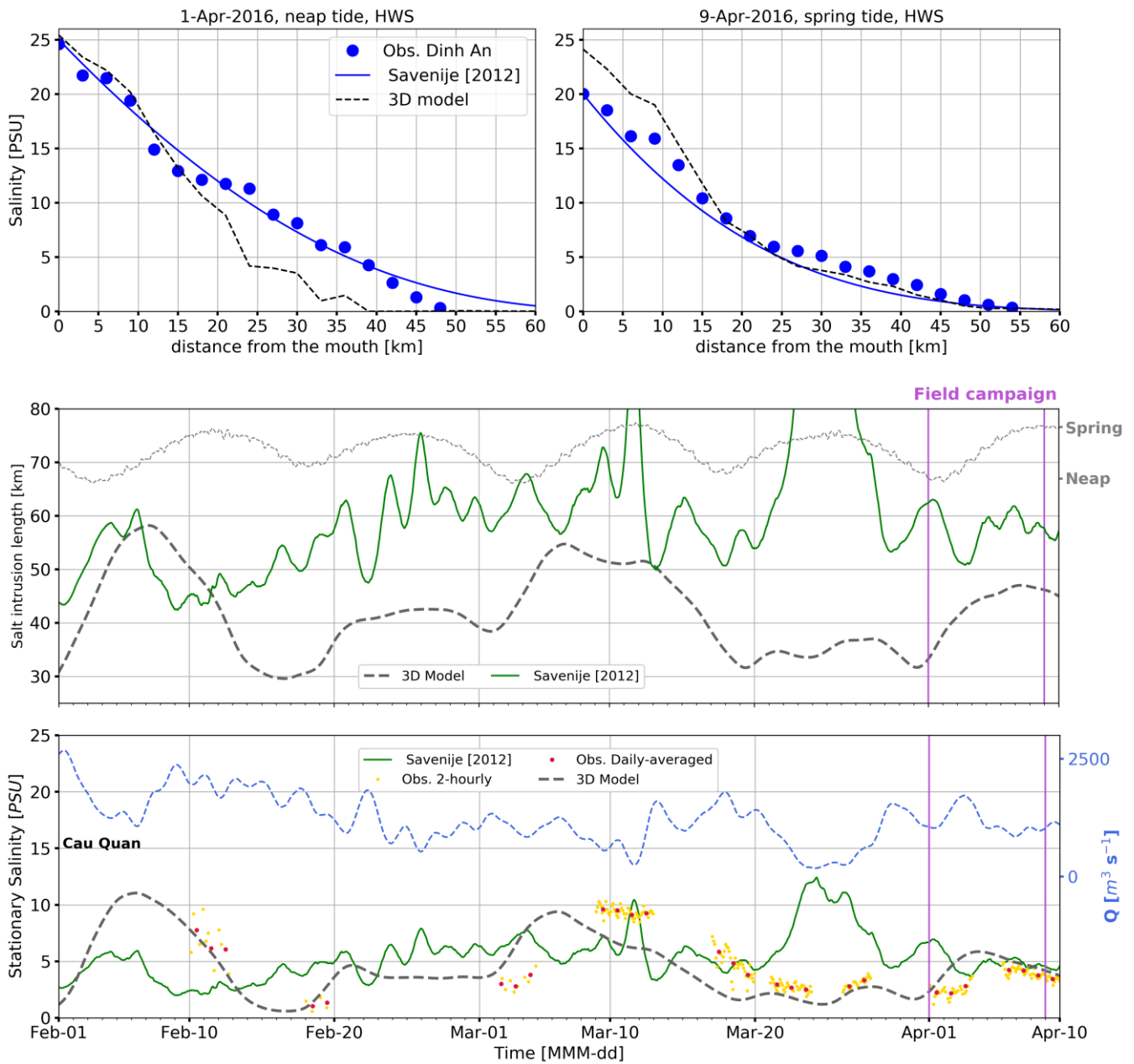


Figure 12, Top left and right panels: Observed versus numerical (3D) and analytical (Savenije [2012]) modelled depth-averaged along channels salinity at High Water Slack (HWS) along the Dinh An channel; middle panel: comparison of the numerical (3D) versus analytical (Savenije [2012]) tidally-averaged SWI length along the Dinh An channel; lower channel: Observed versus numerical (3D) and analytical (Savenije [2012]) modelled salinity at Cau Quan station nearly 27 km from the sea within the Dinh An channel.

815

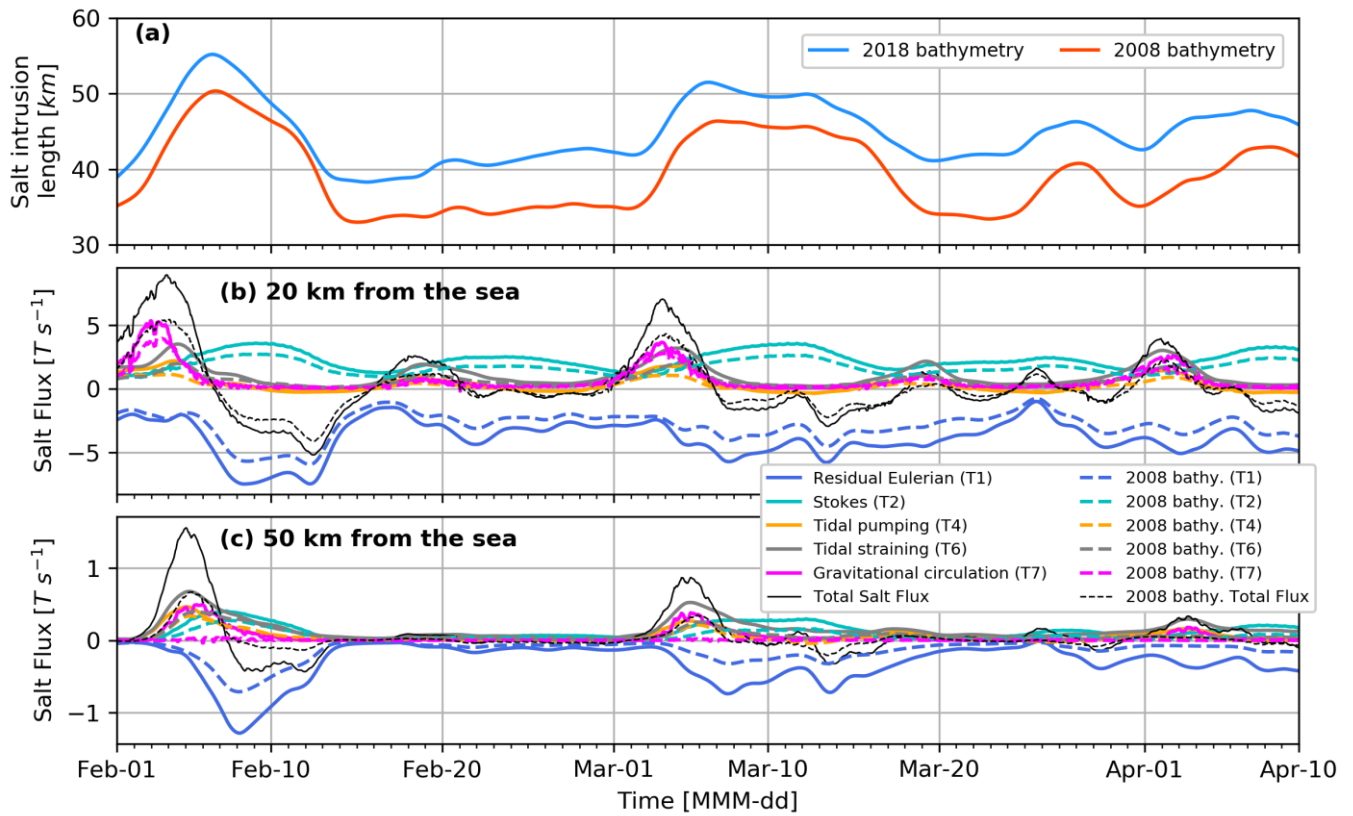


Figure 13, Variation in tidally-averaged salt intrusion length in Ham Luong Channel under existing (2018) and the older (2008) bathymetries (a), Major salt flux mechanisms under two bathymetries at 20km (b) and 50 km (c) from the sea.

**Table 1: Summary of input gauge, bathymetry, wind and tidal data**

<b>Input and validation data</b>	<b>Source</b>	<b>Description</b>
2008 bathymetry data	Eslami et al. (2019a)	data mainly from 2008
2016 bathymetry data	(Vasilopoulos et al., 2020)	The dataset obtained in 2018 covered the entire principle distributary channel network between the sea and Tan Chau/Chau Doc near the VN-Cambodia border (c180 km from the sea).
Water level data (My Thuan, Can Tho)	Collected by SRHMC and provided by SIWRP	Hourly time-series are with reference to Hondau (Vietnamese benchmark system)
Discharge data (My Thuan, Can Tho)	Collected by SRHMC and provided by SIWRP	Hourly time-series are from rating curves, generally updated once per 3-4 months, based on multiple days of continuous transect measurements
Stationary salinity observations	Collected by SRHMC and provided by SIWRP	Measured manually at different depths at an approximately fixed point in the estuary
Discharge in Kratie	MRC	Daily averaged discharge from rating curves
Offshore wind (40 km)	Climate Forecast System Reanalysis (CSFR), originally published by NCEP NOAA	The hourly wind parameters at 10 m, downloaded from online DHI metocean data portal
Evaporation	Literature	Considering reported values in the literature and in consultation with SIWRP
Water demand	SIWRP	Temporal variation as per (Eslami et al. 2019a)
Tidal constituents at the offshore boundary	TOPEX/Poseidon global inverse tide model (TPXO 8.0)	Thirteen leading harmonic constituents $M_2$ , $S_2$ , $N_2$ , $K_2$ , $K_1$ , $O_1$ , $P_1$ , $Q_1$ , $MF$ , $MM$ , $M_4$ , $MS_4$ , $MN_4$

825 **Table 2: list of simulations run in this study with a brief description**

<b>Models</b>	<b>Description</b>
Ref.	Reference model with all the drivers (as described in section 2.4)
NS	(No Surge) excluding the offshore wind-driven subtidal water level
$M_2$	All drivers, but offshore tidal constituent was limited to semi-diurnal tide, with $M_2 + 0.5 S_2$ amplitudes (no spring-neap variation)
$M_2S_2$	All drivers, but offshore tidal constituent is limited to $M_2$ and $S_2$ , developing a spring-neap variation
$K_1$	All drivers, but offshore tidal constituent is limited to diurnal tide, with $K_1 + 0.5 O_1$ amplitudes; no spring-neap variation; minimum tidal mixing

**Table 3, Summary of sensitivity analysis simulations and their descriptions**

<b>Models</b>	<b>Description</b>
$M_2/K_1/M_2S_2;$ $Q_{\text{const.}} = k \text{ m}^3\text{s}^{-1}$	6 simulations characterized by their constant upstream discharge (3000 or 6000 $\text{m}^3/\text{s}$ ) and limited offshore tidal forcing. These are denoted by $M_2$ (single semi-diurnal tide, with amplitude $M_2+0.5S_2$ ), $K_1$ (single diurnal tide with $K_1$ amplitude + $O_1$ amplitude) and $M_2S_2$ (two semi-diurnal species of $M_2$ and $S_2$ , incl. spring-neap variability)
$Q_p = XX \text{ k m}^3 \text{ s}^{-1}$	16 simulations with constant upstream discharge and subtidal water level, with a 10-day parabolic perturbation of $XX \text{ m}^3 \text{ s}^{-1}$ magnitude from the constant discharge, 8 simulations with diurnal and 8 with semi-diurnal tide (excluding spring-neap variations)
$Q_s = XX \text{ m}$	16 simulations with constant upstream discharge and subtidal water level, with a 10-day parabolic perturbation of $XX \text{ m}$ from the constant offshore subtidal water level, 8 simulations with diurnal and 8 with semi-diurnal tide (excluding spring-neap variations)