

A hybrid data-model approach to map soil thickness in mountain hillslopes

Qina Yan¹, Haruko Wainwright¹, Baptiste Dafflon¹, Sebastian Uhlemann¹, Carl I. Steefel¹, Nicola Falco¹, Jeffrey Kwang², Susan S. Hubbard¹

5 ¹Earth and Environmental Science Area, Lawrence Berkeley National Laboratory, Berkeley, CA., USA.

² Department of Geosciences, University of Massachusetts Amherst, Amherst, MA, USA.

Correspondence to: Qina Yan (qinayan@lbl.gov)

Abstract. Soil thickness plays a central role in the interactions between vegetation, soils, and topography where it controls the retention and release of water, carbon, nitrogen, and metals. However, mapping soil thickness, here defined as the mobile regolith layer, at high spatial resolution remains challenging. Here, we develop a hybrid model that combines a process-based model and empirical relationships to estimate the spatial heterogeneity of soil thickness with fine spatial resolution (0.5 m). We apply this model to two aspects of hillslopes (southwest- and northeast-facing, respectively) in the East River Watershed in Colorado. Two independent measurement methods—auger and cone penetrometer—are used to sample soil thickness at 78 locations to calibrate the local value of unconstrained parameters within the hybrid model. Sensitivity analysis using the hybrid model reveals that the diffusion coefficient used in hillslope diffusion modelling has the largest sensitivity among all input parameters. In addition, our results from both sampling and modeling show that, in general, the northeast-facing hillslope has a deeper soil layer than the southwest-facing hillslope. By comparing the soil thickness estimated between a machine learning approach and this hybrid model, the hybrid model provides higher accuracy and requires less sampling data. Modeling results further reveal that the southwest-facing hillslope has a slightly faster surface soil erosion rate and soil production rate than the northeast-facing hillslope, which suggests that the relatively less dense vegetation cover and drier surface soils on the southwest-facing slopes influence soil properties. With seven parameters in total for calibration, this hybrid model can provide a realistic soil thickness map with a relatively small amount of sampling dataset comparing to machine learning approach. Integrating process-based modeling and statistical analysis not only provides a thorough understanding of the fundamental mechanisms for soil thickness prediction, but integrates the strengths of both statistical approaches and process-based modeling approaches.

1 Introduction

The soil layer is an element of the critical zone where water, carbon, nitrogen, and other elements exchange between air and plants and the subsurface. The thickness of a soil layer regulates the hydrologic response, including surface and base flow runoff, water partitioning, evapotranspiration, plant-available water, and water and nutrient residence time (Fan et al., 2019).

30 It also determines hillslope stability (or landslide potential), channel initiation, drainage density, and other geomorphic processes (Dietrich et al., 1995). Moreover, soils hold the largest reservoir of organic carbon in the terrestrial ecosystem and function as a reservoir of other elements' accumulation, sequestration, and biogeochemical reactions (Grant and Dietrich, 2017; Tokunaga et al., 2019). Therefore, an accurate soil thickness map can improve the estimation of water, carbon, nitrogen, and other elements dynamics for hydrologic and biogeochemical modeling (Carvalhais et al., 2014; Fan et al., 2019; Li et al., 35 2020; Patton et al., 2019; Pelletier et al., 2016). However, mapping soil thickness remains one of the key uncertainties in land surface process models because of the complexity of factors that affect soil thickness (Jackson et al., 2017; West et al., 2012; Pelletier et al., 2018; Tesfa et al., 2009).

The soil layer, here defined as the mobile regolith layer, extends from the land surface to the top of the saprolite layer or 40 bedrock (if no saprolite layer). Process-based geomorphologic models describe the soil thickness with mass conservation based on the balance between (1) soil transport (i.e., erosion and deposition) on the land surface and (2) soil production resulting from the bedrock-to-soil or saprolite-to-soil weathering at the bottom of the soil layer (Catani, et al., 2010; Dietrich et al., 1995; Heimsath et al., 2001; Heimsath et al., 1997; Nicótina, et al., 2011; Roering, et al., 1999, 2001; Tesfa et al., 2009). These two processes are controlled by vegetation cover, topographic gradient, biogenic processes, and climate forcing. The surface soil 45 transport is expressed as a diffusive-like process, either linear or nonlinear, with topographic gradient (Grant & Dietrich, 2017; Pelletier & Rasmussen, 2009; Temme & Vanwalleghem, 2016; Vanwalleghem, et al., 2013). The soil production rate is usually expressed as relationships of exponential decay (Heimsath et al., 1997) or “bell-shaped” along soil depth (Heimsath, et al., 2009; Pelletier & Rasmussen, 2009). However, previous studies have focused exclusively on erosional areas near ridges where the erosion rate keeps pace with soil production rate. In areas where the topography has convergent (mostly depositional) 50 zones, which are commonly revealed in a Light Detection and Ranging (LiDAR) digital elevation model (DEM) for high spatial-resolution modeling, these mechanistic models fail to capture the full soil thickness distribution. The missing part of soil thickness estimation in convergent areas underlines the need for a hybrid approach that couples mechanistic and empirical methods to map soil thickness.

55 Many studies have used curvature—defined as the second order derivative of elevation—as a proxy for soil thickness (Patton, et al., 2018; Tesfa et al., 2009), because hillslope curvature has an inverse (either linear or nonlinear) relationship with soil production rate based on mass conservation laws (Dietrich et al., 1995; Heimsath et al., 1997; Jackson et al., 2017). However, some studies show that curvature is a secondary or less significant variable than other topographic or land cover features in predicting soil thickness (Roering, et al., 2010; Shangguan, et al., 2017; Taylor et al., 2013; Tesfa et al., 2009). Also, curvature is proven to show a weak correlation to soil thickness in catchments with high curvature variability (Patton et al., 2018). One 60 of the reasons that curvature fails to be the dominant explanatory variable could be that curvature is sensitive to the DEM resolution even among adjacent hillslopes (Patton et al., 2018; Pelletier and Rasmussen, 2009). Moreover, because the relationship between curvature and other features are difficult to generalize or transfer from one study site to another site, it is

not ideal to rely on curvature only to estimate soil thickness. Still, the derivation of an empirical relationship may serve the
65 needs for partial areas in a landscape such as zones with convergent topography (Patton et al., 2018).

Here we present a hybrid model that combines a process-based model with empirical relationships to explore the fundamental
mechanisms of soil thickness and estimate the spatial variability. The advancement embodied in this hybrid model is that it
generalizes the calculations needed to predict soil thickness and is therefore applicable to various sites. In the methodology
70 section, we introduce our hybrid modeling approach and relevant concepts such as curvature calculation with different DEM
smoothing methods, sensitivity analysis of model parameters, and a machine-learning approach as a comparison with the
hybrid model. This model was applied with high resolution DEM (i.e., 0.5 m) at two adjacent mountainous hillslopes in the
East River watershed in Colorado, U.S.A. Data from field observations at this site allows for calibration of the model. We first
investigate the impacts of DEM resolution on the topographic curvature, an essential variable in this hybrid model, and then
75 discuss the sensitivity of parameters to determine the importance of each parameter. The spatial maps of soil thickness, surface
transport rate, and soil production rate are then presented. A Random Forest machine-learning model is used to correlate and
predict soil thickness based on topographic and vegetation features and is compared with the hybrid model.

2 Methodology

80 2.1 Hybrid modelling approach

We introduce a hybrid approach that couples two methods—a mass conservation law (Dietrich et al., 1995; Roering et al.,
1999, 2001; Yan et al., 2019) and an empirical relationship (Patton et al., 2018)—to overcome the limitations of each individual
method. The mass-conservation method is suitable for a divergent topography where erosion is the dominant process, while
the empirical relationship is applied to a convergent topography where deposition is the dominant process. In this hybrid model,
85 seven parameters (Table 1) need to be calibrated for a specific hillslope area. In addition, we synthesize methods that are used
to investigate the impacts of DEM resolution on topographic curvature, which is a key input variable for soil thickness in the
empirical relationship. A diagram that highlights the workflow is shown in Figure S1.

2.1.1 Mass conservation method

The mass conservation equation of soil thickness that combines soil surface transport and soil production processes can be
90 expressed as:

$$\frac{\partial h}{\partial t} = P - \nabla \cdot q_d - \nabla \cdot q_s \quad (1)$$

where h is soil thickness [L], t is time [T], P is soil production rate [L/T], q_d and q_s is the volume flux of sediment transport
per unit width resulting from diffusion-driven and overland flow-driven erosion, respectively [L^2/T]. The diffusion-driven soil

transport rate $\nabla \cdot q_d$ is the outcome of combining wind erosion, biogenic disturbance, soil creep, and rain drop splash. On steep
 95 slopes, the following nonlinear slope-dependent transport law is often used for topographic analysis and numerical experiments
 and has been successfully demonstrated by field studies and laboratory experiments (Andrews and Bucknam, 1987; Perron,
 2011; Roering et al., 1999, 2001):

$$q_d = -\frac{K_d \nabla \eta}{1 - (\nabla \eta / S_c)^2} \quad (2)$$

where K_d is the diffusion coefficient [L^2/T], and $S_c = 1.25$ (Roering et al., 1999) is a critical surface slope. The equation
 00 implies that when the slope ($\nabla \eta$) is far less than S_c , the relationship between diffusion flux and slope is almost linear; when
 the slope approaches S_c , q_d increases rapidly.

The overland flow-driven soil transport rate $\nabla \cdot q_s$ is expressed as the spatial divergence of stream power (Yan et al., 2019):

$$\nabla \cdot q_s = \frac{q_{s,out} - \Sigma q_{s,in}}{d_s} \quad (3a)$$

$$q_s = K_s (H_w S)^\beta \quad (3b)$$

where K_s is the soil erodibility coefficient [$L^{2-\alpha}/T$], S is the slope along flow direction [-], and β is an empirical constant for
 05 surface erosion, where $\beta = 1.68$ (Yan et al., 2019). H_w is surface water depth [L], which is expressed in a 2-D diffusive form
 (Lal, 1998):

$$\frac{\partial H_w}{\partial t} = \frac{\partial}{\partial x} \left(D_h \frac{\partial H_w}{\partial x} \right) + \frac{\partial}{\partial y} \left(D_h \frac{\partial H_w}{\partial y} \right) \quad (4)$$

where D_h is a diffusion coefficient controlled by water depth, land-surface gradient, and Manning's coefficient (Lal, 1998;
 10 Yan et al., 2019).

The soil production rate function has been developed to calculate only the development of mobile soil (it excludes the immobile
 saprolite layer) (Heimsath et al., 1997). The calculation of the soil production rate makes use of two assumptions: (1)
 production rate exponentially decreases with soil thickness, and (2) production rate has a humped relationship (or a 'belly-
 15 shape') along soil depth (Dietrich et al., 1995; Heimsath et al., 2001; Pelletier and Rasmussen, 2009). Because the humped
 relationship is not yet well validated by field observations, in this study we rely only on the exponential model to represent
 soil production rate:

$$P = \frac{\rho_r}{\rho_s \cos \theta} P_o e^{-h \cos \theta / h_o} \quad (5)$$

where ρ_r and ρ_s are bedrock and soil bulk density, respectively, [M/L^3]. The mean value of the soil bulk density at sampling
 20 sites is $0.948 \text{ [g/cm}^3\text{]}$, and the bedrock bulk density for weathered shale from our deep samples is estimated to be $1.26 \text{ [g/cm}^3\text{]}$.

P_o [L/T] and h_o [L] are empirical constants for soil production; and θ is the slope of the land surface in degree [-] because the direction of soil thickness is perpendicular to the land surface.

25 Under the assumption of steady-state conditions, which have been observed in several mountainous area studies (Dietrich et al., 1995; Vanwalleghem et al., 2013), we can solve soil thickness from the mass-conservation equation. The validity of this assumption for the site studied here will be presented in Section 3. By adopting this assumption, the soil thickness (h) can be solved from the mass-conservation equation (Eqn. 1) as:

$$\frac{\rho_r}{\rho_s} \frac{1}{\cos\theta_s} P_o e^{-h\cos\theta/h_o} - \nabla \cdot q_d - \nabla \cdot q_s = 0 \quad (6)$$

30 The soil thickness value h can be directly solved here because $\nabla \cdot q_d$ and $\nabla \cdot q_s$ are independent of soil thickness. One issue that arises here is that there is no real number for soil thickness if $\nabla \cdot q_d + \nabla \cdot q_s < 0$ where there is a continuous depositing of surface soil. Therefore, we introduce Patton's method (Patton et al., 2018) in depositional areas to overcome this drawback in the following section.

2.1.2 An empirical approach for depositional areas

35 Based on field measurements among five mountainous watersheds, Patton et al. (2018) found that soil thickness has a linear relationship with curvature:

$$h = a\nabla \cdot \nabla\eta + \bar{h} \quad (7)$$

where \bar{h} is the spatial mean value of soil thickness, and a is a constant value which is determined by having a negative linear relationship with the standard deviation of curvature. In our model, we take a as an independent parameter instead of being calculated based on curvature, which adds one more degree of freedom to the model.

40 2.1.3 Investigation of the LiDAR DEM smoothing range for curvature

In the empirical equation (Eqn. 7), the curvature ($\nabla \cdot \nabla\eta$) is the only spatial variable that determines the soil thickness. Further, the topographic curvatures are very sensitive to the resolution of the DEM. If the grid size of the DEM is large, then the topography could be over-smoothed, thus underestimating the actual curvature. On the other hand, if the grid size of elevation is small, then there could be temporary pits or burrows in the topography, which can result in large local curvature values that do not represent the soil production processes. To identify a reasonable range of DEM resolution for calculating $\nabla \cdot \nabla\eta$, we explored three approaches to reproduce the DEM by: 1) smoothing the DEM over space, 2) polynomial fitting of the DEM, and 3) smoothing the DEM over time. The smoothed DEM is for calculating curvature in the imperial method only (Eqn. 7), and the rest of all other calculations (Eqn. 1-6) still use the original lidar DEM as the input.

50 Smoothing of the DEM over space is done by replacing the value of a 2-D grid cell with the mean value of its surrounding
 neighbours. The size of its neighbour cells follows $3\Delta x$ (8 neighbors), $5\Delta x$ (24 neighbors), $7\Delta x$ (48 neighbors), ...,
 $(2N + 1)\Delta x$ ($(2N + 1)^2 - 1$ neighbors), respectively; where Δx is the original resolution (i.e., 0.5 m), and N is an integer;
 then a moving window replaces the value of every single 2-D grid cell in the 0.5 m lidar. The polynomial fitting of the DEM
 is achieved by fitting a 2nd order polynomial to grid cells within a specified radius and repeating this at each grid cell within
 55 the study area. For example, the elevation is fitted by $\eta = a_1x^2y^2 + b_1x^2y + b_2xy^2 + c_1x^2 + c_2y^2 + dxy + e_1x + e_2y + f$,
 where $a_1, b_1, b_2, c_1, c_2, d, e_1, e_2$, and f are parameters to fit the polynomial curve. The curvature value is $\nabla \cdot \nabla \eta = 2c_1 + 2c_2$.
 The DEM smoothing over time is performed by discretizing the diffusion equation $\frac{\partial \eta}{\partial t} = K_d \nabla \cdot \nabla \eta$, which gives $\eta_n = \eta_1 +$
 $\Delta t * K_d \sum_{i=1}^{n-1} \nabla \cdot \nabla \eta_i$, where subscript i , 1, and n denote the time step. A longer time period (higher n value) results in a
 smoother topography, so the DEM is smoothed into different levels with different n values. To the authors' knowledge,
 60 smoothing over time approach is new and original in the study.

2.1.4 Combine the mass conservation method with the empirical method

For the mass conservation equation, the steady-state assumption is used for the soil thickness estimation in the assumption that
 the soil production balances the physical erosion, as used in other studies (Pelletier and Rasmussen, 2009; Pelletier et al, 2011;
 Dietrich et al, 1995). Therefore, the mass conservation method with the steady-state assumption can be used to solve the soil
 65 thickness at erosional sites but has a limitation at depositional sites (Eqn. 6, Dietrich et al, 1995). Patton's method is better
 adapted to depositional sites. However, it can provide negative values of soil thickness at erosional sites where there are zones
 with high negative-curvature values. Also, in a low gradient and divergent area, if the soil transport rate is assumed as a linear
 relationship with curvature (i.e., $\nabla \cdot q_d = -K_d \nabla \cdot \nabla \eta$, and $\nabla \cdot q_s = 0.0$), then Equation 6 can be further simplified in that the
 soil thickness has a natural logarithm relationship with curvature (i.e., $h = -m * \ln(\nabla \cdot \nabla \eta) + C$, where m and C are constant
 70 parameters that can be calibrated from field sampling data. However, Patton's method (Patton et al., 2018) always assumes a
 linear relationship between soil thickness and curvature. This may be why his empirical relationship does not work very well
 in the erosional areas. However, this can be compensated for by using the mass-conservation method.

We combine the two methods by applying the mass-conservation method to most erosional sites, and then applying the
 75 empirical method to all depositional sites and a potentially small portion of erosional sites where the curvature values are
 negative but close to zero. The threshold value used to separate these two methods is represented as E_{thre} [L/T] ($E_{thre} \geq 0$):

$$\begin{cases} \nabla \cdot q_d + \nabla \cdot q_s > E_{thre}, & \text{mass conservation} \\ \nabla \cdot q_d + \nabla \cdot q_s \leq E_{thre}, & \text{Patton's method} \end{cases} \quad (8)$$

where the threshold, E_{thre} , is a condition of the soil erosion rate and equal or larger than zero value. If $\nabla \cdot q_d + \nabla \cdot q_s > E_{thre}$
 at a 2-D grid cell, then this cell must be an erosional site; if $\nabla \cdot q_d + \nabla \cdot q_s \leq E_{thre}$, then this cell can be either a depositional
 80 site (if $\nabla \cdot q_d + \nabla \cdot q_s \leq 0$) or a slightly erosional site (if $0 < \nabla \cdot q_d + \nabla \cdot q_s \leq E_{thre}$). In most of areas, a divergent

topography corresponds to erosional areas and vice versa for depositional areas. But here we use the transport rate instead of the curvature as the criteria to choose between the two methods because there are possibly sites which are convergent but erosional where overland flow erosion is stronger than the diffusive deposition. In other words, areas where $\nabla \cdot q_d + \nabla \cdot q_s \leq 0$, it must be a convergent area and undergoing deposition, but if it is a convergent area, it is unnecessary to be $\nabla \cdot q_d + \nabla \cdot q_s \leq 0$. Also, we assign $E_{thre} \geq 0$ instead of equal to zero, aiming to provide a more flexibility to switch between the two methods. Overall, E_{thre} is supposed to be very close to zero. We conducted a grid search to calibrate the parameters and discuss the corresponding posterior distribution of parameters in Section 4.3.

2.2 Sensitivity analysis of the model parameters

We introduce the Morris one-step-at-a-time (OAT) method for a sensitivity analysis of parameters used in the hybrid model. Given the uncertainty of the input parameters (Table 1), we applied the Morris OAT method to quantify parameter sensitivity (Campolongo, et al. 2007; Morris, 1991). The Morris method provides global sensitivity indices over the parameter space at a relatively limited computational cost (Wainwright, et al., 2014). With a set of k parameters $\{\mathbf{x}\}$ in that $\{x_i | i = 1, 2, \dots, k\}$, the output from the combined model is $f(\{\mathbf{x}\})$. The Morris method first generates a randomly assigned set of parameters in a discrete parameter space, and then changes one parameter at a time. $(k + 1)$ simulations are required to complete one path, having a set of parameters, and changing all the parameters. This path is repeated for randomly generated parameter sets, with the total run being $r(k + 1)$, when the number of paths is r . By normalizing parameters and uniformly spacing from 0 to 1 with $(p - 1)$ intervals, the elementary effect is given as:

$$EE_i = \frac{1}{\tau} \frac{f(x_1, x_2, \dots, x_{i-1}, x_i + \Delta, x_{i+1}, \dots, x_k) - f(\mathbf{x})}{\Delta} \quad (11)$$

where τ is a scaling factor, $\{\mathbf{x}\}$ is a randomly selected parameter set, and the fixed increment $\Delta = p / (2(p - 1))$ (Campolongo et al., 2007).

Here, we use iTOUGH2 (Wainwright et al., 2014) to generate sets of parameters. Then we sample r ($= 20$) elementary effects for each parameter. The standard deviation (σ) and absolute of the mean value ($|\mu|$) of elementary effect of each parameter can be used to investigate the importance and nonlinearity in the combined model. To avoid the influence of non-monotonicity when some effects cancel each other out (Campolongo et al., 2007), we use the absolute mean value instead of the mean value in this study. Our work focuses on the sensitivity of how soil thickness is dictated by landscape characteristics such as the hillslope diffusion coefficient, soil erosion coefficient, and the saprolite-to-soil weathering capacity.

2.3 Random Forest regression

In addition to the hybrid modeling approaches, we use a machine-learning approach Random Forest (Breiman, 2001), to predict the soil thickness for comparison purposes to the hybrid method. The features to train the model are topographic and land-

cover data obtained from remote sensing. The Random Forest analysis also helps to identify important predictors for soil thickness. Random Forest is capable of averaging the generated regression trees from bootstrapped subsampled data. This algorithm is nonparametric by assuming no specific data distribution ahead of time (Hastie, 2001). We use the ‘sklearn’ Python package for this study.

15

The Random Forest algorithm input dataset comprises topographic and land cover features, including aspect, gradient, curvature, topographical flow accumulation, normalized difference vegetation index (NDVI), canopy water content, topographical position index (TPI) etc. (Brodrick et al., 2020; Chadwick et al., 2020; Goulden et al., 2020) at 10 m resolution and smoothing with a moving window at different sizes (e.g., 30 m, and 50 m, and 90 m) (See Table S1 for the full list of features). Because the field observations have limited sampling points (78), we use the leave-one-out cross-validation method (Efron, 1982) where the number of folds equals the number of instances in the dataset. The Random Forest algorithm is applied once for each instance, using all other instances as a training set and using the selected instance as a single-item test set.

20

3 Study site description and data sampling

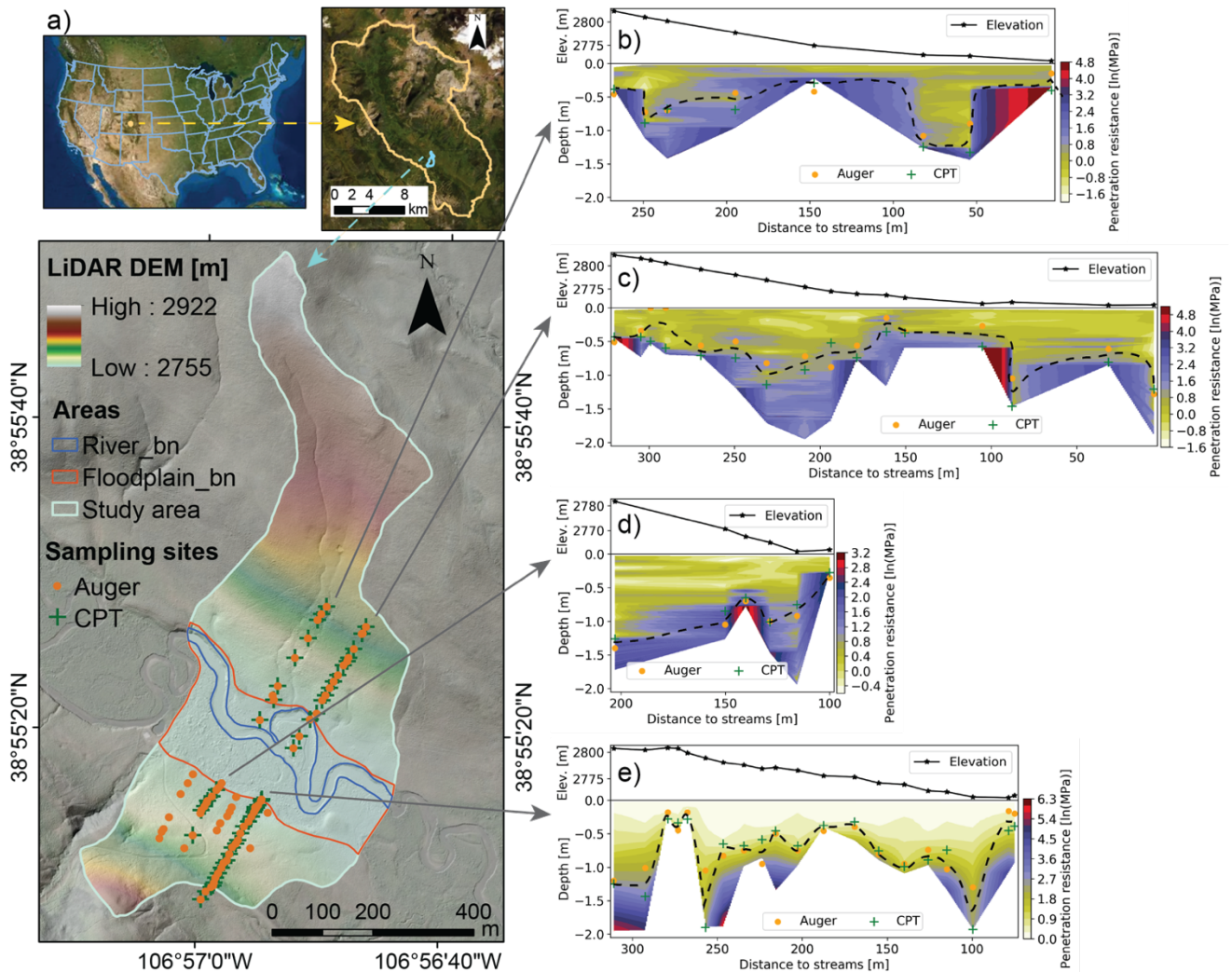
Our study site is within the East River watershed, which represents a typical headwater mountainous watershed in the Upper Colorado River Basin in Colorado. The East River watershed is a testbed aiming to improve predictions of hydrology-driven biogeochemical activities. There is a focus on this watershed because it hosts a wide spectrum of vegetation cover, features various hydrologic and geomorphologic processes. It is a headwater to the Colorado River that supplies 1 in 10 Americans with water for municipal usage and irrigation for over 2.2 million ha (Hubbard et al., 2018). This ~126.5 km² watershed has a continental climate with long, cold winters and short, cool summers, with monthly mean temperature ranging from -9.2 to 9.8°C. The annual precipitation, based on three years of monitoring (2015-2018), is between 659 and 750 mm, the majority of which falls as snow, followed by mid- to late-summer monsoonal rainfall.

25

30

We consider opposite facing hillslopes to determine whether the variability in meteorological forcing drives differences in the soil thickness (Pelletier et al., 2018). Our study sites (Fig. 1a) include northeast- and southwest-facing hillslopes (for simplicity, referred to as north-facing and south-facing hillslopes) connected to a floodplain (Fig. S2) spanning a total of 0.4 km² and located with an elevation range from ~2755 to 2922 m at ~38.93°N latitude and ~106.95°W longitude. The differences in slope and aspect drive differences in hillslope energy balance, snow-melt timing, and vegetation seasonal dynamics. The south-facing slope shows a thinner snowpack resulting from episodic melt events scattered throughout the winter and spring; whereas the north-facing slope develops a thicker seasonal snowpack that primarily melts during a large snowmelt event occurring over several weeks in spring (Hinckley et al., 2014). Based on the field campaigns in 2019, soils in this area are composed of 15% sand, 47% silt, and 38% clay. Several remote sensing products available at this site were used in this study including, 0.5 m lidar DEM, topographic and vegetation features (Table S1).

40



45 **Figure 1: Study site and soil thickness observation. (a) Study site in the East River Watershed, CO, USA. The LiDAR DEM is 0.5 m (Goulden et al., 2020). (b-e) Soil thickness measured by auger (orange dots) and cone penetrometer (CPT) (green cross) data along four transect lines. The CPT data is presented as natural logarithm. The CPT-inferred vertical profiles of resistance values at each surveyed location have been interpolated along the transects by using a kriging method. The dashed lines are estimated soil thickness by averaging the auger and CPT measurements.**

50 The last glacial advancing and retreating in the Upper Colorado River Basin is dated between 16.1 and 20.8 ka (Brugger, 2010). Glacial deposits are mapped at many locations throughout the watershed (Gaskill, 1991; Fig. S3), but they are rather isolated and have a limited spatial extent, including in the area analyzed in this study. A former study at the same site analyzed 40 hand-augured soil cores and showed progressive changes in color and texture among soil, weathered zone, and unweathered bedrock with depth (Wan et al., 2019). Further, among total five wells drilled at the site, none of them reports the presence of glacial deposit (Tokunaga et al., 2019; Wan et al., 2019). It is likely that the glacial legacy scoured the valley to bedrock and
 55 the glacial retreat reset the ‘clock’ for soil formation mostly by in situ bedrock weathering and minor by colluvial deposition.

Soil thickness was measured at 78 locations across the north- and south-facing slopes. Many studies dig soil pits or use augers to distinguish the contact layer between mobile and immobile regolith layers (Catani et al., 2010; Heimsath et al., 1997; Patton et al., 2018; Pelletier and Rasmussen, 2009). Here, we chose two independent methods to measure the soil thickness of the two hillslopes. We used an auger to drill and sampled 78 points within the two hillslopes, and used a dynamic cone penetrometer technique (CPT) (Vanags, et al., 2004) to measure two transects along each side of the hillslopes, sampling 54 locations in total (Fig. 1a).

At this study site, we used and compared both auger and CPT measurements to estimate soil thickness. The CPT measurements provide a vertical profile of soil resistance for a soil column. We tested the accuracy of the CPT measurement and found that the CPT i) shows largest change in resistance when entering weathered bedrock, and ii) can be stopped very sharply only in the presence of a boulder, in which case the resistance is so strong that the measurement was deemed suspicious and repeated nearby. Because the CPT may not clearly identify the potential presence of moraine deposits, we also visually inspected the soil and saprolite materials extracted by the auger. From the auger, the transition zone from soil to the saprolite or bedrock is based on the material size and color of retrieved samples (Fig. S4). When the auger reaches the bedrock shale, it cannot penetrate easily. We believe our measurement is relatively accurate and efficient, which provides a consistent assessment of soil thickness over space in comparison to other existing methods. Figures 1b-1e show the relationship between soil thickness estimated from auger, CPT, and local elevation. There is a high variation in soil thickness from local to hillslope scales. To fully take advantage of all the sampling data, we used auger data to fit values for CPT (Fig. S5). The CPT and auger data are mostly in agreement. For soil thicknesses less than ~0.5 m, the CPT data are slightly higher than the auger, and for soil thickness larger than ~0.5 m, the CPT data are slightly lower.

4 Results and Discussion

In this section, we first investigate the scaling issues from DEM resolution with curvature and then discuss the sensitivity of all the parameters used in this hybrid model. Next, we show both the soil thickness predictions based on the hybrid model with the optimal curvature and the soil thickness results from the Random Forest machine-learning approach. Finally, we discuss the relationship between soil thickness, surface transport rate, and weathering rate as determined by the hybrid model.

4.1 Model parameterization of curvature with different smoothing techniques of DEM

The topographic curvature is the key variable for estimating the soil thickness for the empirical approach. However, curvature is an inherently resolution-dependent topographic feature that is derived from a DEM. A 0.5 m DEM can provide ‘noises’ for the results of curvature. The goal here is to determine the optimal DEM resolution for curvature to match with the sampling data, and the smoothing methods provided here are only for the calculation of curvature. To investigate the optimal resolution

of the DEM for calculating curvature, we tested three approaches as explained in Section 2.1.3: smoothing the DEM over space, polynomial fitting of the DEM, and smoothing the DEM over time. For smoothing over space, the elevations of original 0.5 m DEM were replaced by utilizing the mean elevation of the surrounding adjacent cells at the range of 1.5 m, 2.5 m, ..., and 13.5 m. For the polynomial fitting, the diameter is also chosen over the same range and intervals as the way of smoothing the DEM. For smoothing over time, the evolution period of the topography is taken as 0 kyr, 0.25 kyr, 0.5 kyr, ..., 3.25 kyr. We compare the root-mean-square deviation (RMSD) between the sampling results and simulation results of soil thickness as an indicator of the optimal resolution for calculating the curvature (Fig. 2). The sets of parameters used for each spatial or temporal resolution are determined by comparing with the field sampling data, with each parameter increasing linearly from the minimum value to the maximum (the same data sets as in the Morris OAT method). We chose the set of parameters which gives the smallest RMSD.

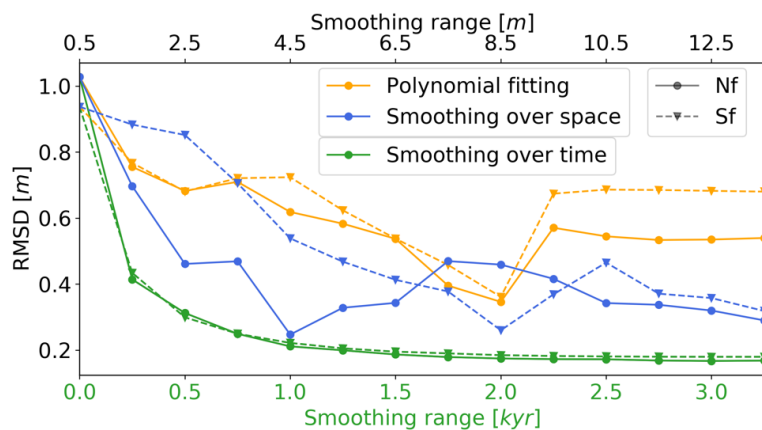


Figure 2: Smoothing techniques to find the best resolutions of DEM for curvature. For smoothing over time approach, the time step is one year; the diffusion coefficient, K_d , is $1.1 \times 10^{-3} \text{ m}^2/\text{yr}$ and 1.8×10^{-3} for the north-facing and south-facing hillslopes, respectively. Nf = North-facing hillslope, Sf = South-facing hillslope.

Different smoothing methods and study sites corresponds to their own optimal DEM resolution for curvature (Fig. 2). For example, in this study the north-facing hillslope shows best fitting with 4.5 m DEM smoothing over space, but the south-facing hillslope corresponds to 8.5 m. Other studies that calculate curvature with various spatial smoothing constraints show the highest accuracy in model predictions with smoothing ranging between 3m and 10 m (Patton et al., 2018; Tesfa et al., 2009). The polynomial fitting and smoothing over time show the same best fitting results among the two hillslopes, which is 8.5 m and around 2 kyr, respectively. Overall, smoothing the DEM over time provides the smallest RMSD with a relatively high efficiency compared to the other two approaches. Smoothing over time provides relatively constant and stable results for both hillslopes. Therefore, in this study, we use the DEM smoothed over time at year 2 kyr to calculate curvatures. However, we still use the original lidar DEM for the mechanistic model of soil thickness.

10 4.2 Global sensitivity analysis

We apply the Morris OAT method to investigate the global sensitivity of the seven parameters (Table 1) in the hybrid model. For each parameter, we calculate the “absolute of the mean elementary effect,” $|\mu|$, in that the higher number represents higher importance; and the standard deviation of the elementary effect, σ , which represent the nonlinearity effect or interactions with other parameters (Fig. 3). Each dot represents an evaluation of one parameter at one sampling site. In general, the parameters in the mass-conservation model have higher $|\mu|$ values, meaning that they have more significant impact on soil thickness than the parameters in the empirical model. The diffusion coefficient, K_d , is the most important factor (high $|\mu|$ value) and high nonlinearity (σ) and thus should be carefully calibrated. It represents the soil diffusive-like process such as soil creeping and biogenic activities. The normalized soil depth (h_o) is also has higher | high $|\mu|$ value, which suggests that it is a very important factor because, but more linear than K_d due to relatively small σ . These imply that on surface of a soil layer, the diffusive process is the most important transport mechanism for hillslope soil erosion rather than the soil erosion from overland flow (Dietrich et al., 1995; Nicótina et al., 2011; Roering et al., 1999, 2001); and at the bottom of the soil layer, the normalized soil depth is the most important parameter for estimating the soil production rate. The two parameters from the empirical method, a and \bar{h} , are used for soil depositional areas. The sensitivity of a and \bar{h} are nearly linear (since σ is close to zero), but when the soil thickness reaches an upper limit (2 m in our model), this causes a nonlinear increase in soil thickness and hence a rapid increase of σ .

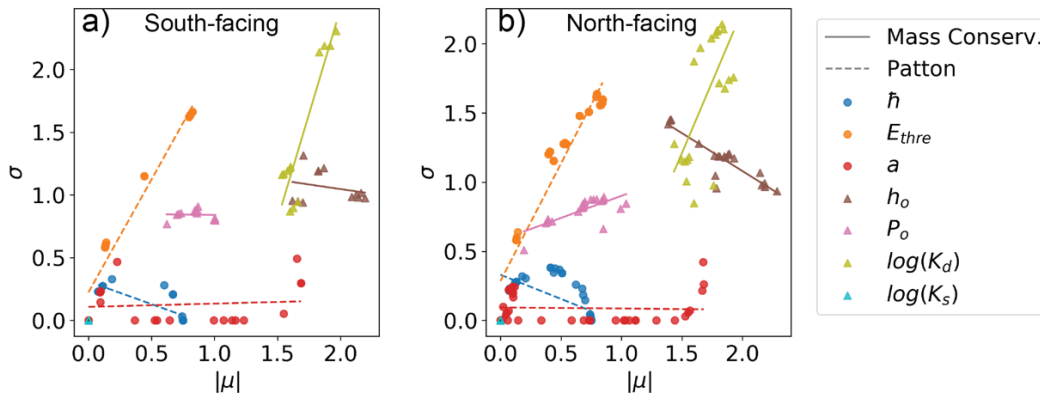


Figure 3: Sensitivity analysis of the seven parameters in the hybrid model. Parameters \bar{h} , E_{thre} , and a are in Patton’s method; and h_o , B_p , $\log(K_d)$, and $\log(K_s)$ are in the mass-conservation method. The solid and dash lines are fitted linear-regression lines to reveal the relationship between the standard deviation (σ) of the elementary effect and the absolute of the mean ($|\mu|$) of elementary effect for the mass-conservation method and Patton’s method, respectively. Each dot is at one sampling location per parameter.

4.3 Hybrid data-model soil thicknesses predictions and their comparison to measurements

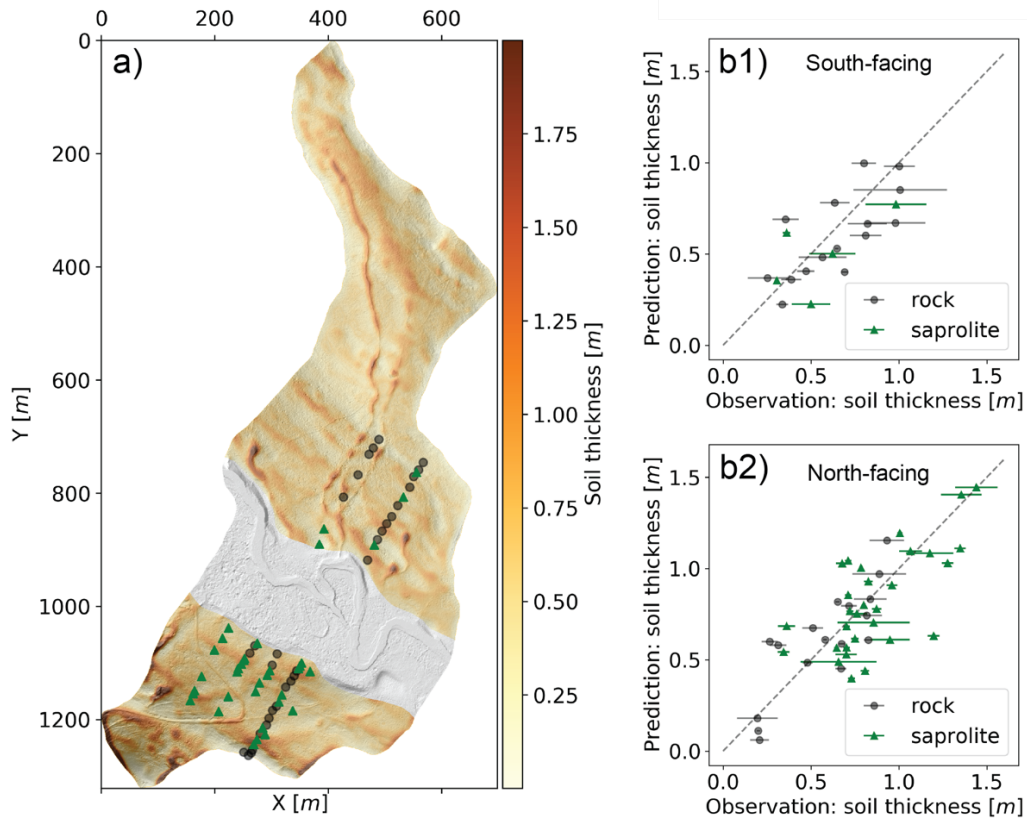
At erosional sites, the erosion from the land surface can be balanced out by the soil formation from the bottom, therefore, the soil thickness may reach a steady state condition. By coupling soil thickness with landscape evolution, we found that the soil thickness reaches a dynamic steady-state after approximately 25 kyr at this study site (Fig. S6), which is consistent with other

35 studies in mountainous areas (Dietrich et al., 1995; Vanwallegem et al., 2013). This implies that the current soil thickness in
the East River Watershed may have already reached a steady-state condition since the last glacial legacy. Here, we only focus
on the steady state condition at erosional sites because they are where we apply the mass conservation equation. For
depositional sites, the soil gradually accumulates on the land surface; and meanwhile, the soil weathering slowly at the bottom;
therefore, the soil thickness is supposed to continuously increase (Dietrich et al., 1995). Due to the complexity of soil
40 depositional environments, such as expansion or compression of soils, we consider that using an empirical relationship is
appropriate for the soil thickness at depositional areas.

A spatial map of soil thickness that compares modelling predictions and observation results is shown in Fig. 4. In general, the
soil thickness of the north-facing hillslopes is greater and has higher variation than that of the south-facing hillslopes.
45 Specifically, soil thickness of the south-facing side ranges from about 0.2 m to 1 m, with a mean value of 0.55 m, while on the
north-facing side, the soil thickness ranges from 0.15 m to 1.5 m, with a mean value of 0.67 m. We use the sampling data from
both auger and the CPT to calibrate the seven parameters (Table 1) for the south-facing and north-facing hillslopes separately.
One explanation for the mismatch between modeling and field observations (Fig. 4b) could be that parts of the hillslopes are
on terraces. These areas may have fluvial deposits on ancient floodplains before they were turned into terraces (Yan et al.,
50 2018).

We use the sampling data from auger and the CPT to calibrate the model parameters (Table 1) for the south-facing and north-
facing hillslopes separately. The calibration is performed using a grid search approach where the model loops through the
entire parameter space, with 6 evenly distributed values for each parameter. The range of each parameter is based on literature
and shown in Table 1. The overland flow coefficient K_s is not included in this process because it is insensitive to soil thickness
55 (Fig. 3). The ranges of the remaining 6 parameters are based on literature and shown in Table 1. We created an ensemble of
the soil thickness based on 6^6 (=46646) combinations of parameter sets. We then calculate the root-minimum-square-error
(RMSE) between the simulated and measured soil thickness across the site. Each set of parameters corresponds to one RMSE,
and the distribution of the RMSE as a function of the parameters are shown in Figure S7. The global minimum can be defined
60 as the set of parameter provides the lowest RMSE. In this specific study site, we find a unique set of parameters, which provide
the global minimum with the grid search study. Moreover, when a threshold of RMSE decreases, the number of samples with
RMSE below this threshold decrease and converges to the global minimum. This result indicates the absence of other potential
strong minimum, and therefore, we can identify the set of the parameters that provides the global minimum. In addition, we
have applied a Bayesian approach to estimate the posterior distribution of parameters, as well as the maximum a posteriori
65 estimates (see more in the Supplementary Information). We find that the maximum a posteriori estimates (Figure S8) also
correspond to the global minimum of the RMSE. Moreover, among the posterior distribution of each parameter, P_o and E_{theta}
show closer to uniform in the south-facing hillslope than the north-facing hillslope. The reason may be that the north-facing
hillslope has more sampling points, which provides better estimation than the south-facing hillslope.

70 The difference in soil thickness between the two hillslopes is evident. This is controlled by insolation due to the topographic aspect. The air temperatures and potential evapotranspiration rates produce significantly different microclimates that determine the structure of different ecosystems and surface process regimes. Weathered shale under the soil layer appears to be mechanically weaker on the north-facing slope because of the thicker saprolite layers (Fig. 4b), which results in less resistance during excavations in the field sampling. This implies that thicker soil depth results from a higher soil water content associated with a longer snowmelt period in the north-facing hillslope. The thicker soil depth in turn provides a higher water-storage capability, higher concentration of fine particles, and more biomass, which leads to a positive feedback (Pelletier et al., 2018; 75 Roering et al., 2010).



80 **Figure 4: Soil thickness map. (a) Spatial map of soil thickness from modeling. (b1) and (b2) Comparison between model and field measurements for the south-facing and north-facing hillslope, respectively. The error bars along the x-axis are the differences between auger and CPT data. Gray and green dots present the bottom of the sampling site is bedrock and saprolite, respectively. The correlations, root-minimum-square-errors, and p-values are 0.71, 0.18 m, and $4.2 \cdot 10^{-4}$; and 0.77, 0.19 m, and $2.32 \cdot 10^{-10}$ for south-facing and north-facing hillslopes, respectively. Note that the sampling points in the floodplain zone are excluded because our hybrid model aims to predict the soil thickness in hillslopes.**

85

4.4 Predictive value of landscape features for estimating soil thickness

We evaluate the correlation between soil thickness from sampling and other landscape features obtained from remote sensing data (Fig. 5). Among about 18 topographic and land cover features with various spatial resolutions, we generated ~50 topographic matrices (Table S1). The top five topographic matrices, correlating with soil thickness higher than 25%, from high to low are topographic position index (TPI), curvature, slope degree, topographic wetness index (TWI), and elevation. Other factors such as NDVI (normalized difference vegetation index), leaf mass area, and canopy liquid water do not show obvious correlation with soil thickness. This is consistent with other studies that commonly use the environmental variables such as TWI, elevation, and curvature as the most highly correlated variables in the geostatistical interpolation of soil thickness (Hengl, et al., 2004; Kuriakose, et al., 2009; Shangguan et al., 2017; Taylor et al., 2013). Among the five highest correlated features, TPI and curvature have the highest correlation (-0.87), which implies that the local relief of ridges and valleys are scalable with the size of the corresponding local curvature.

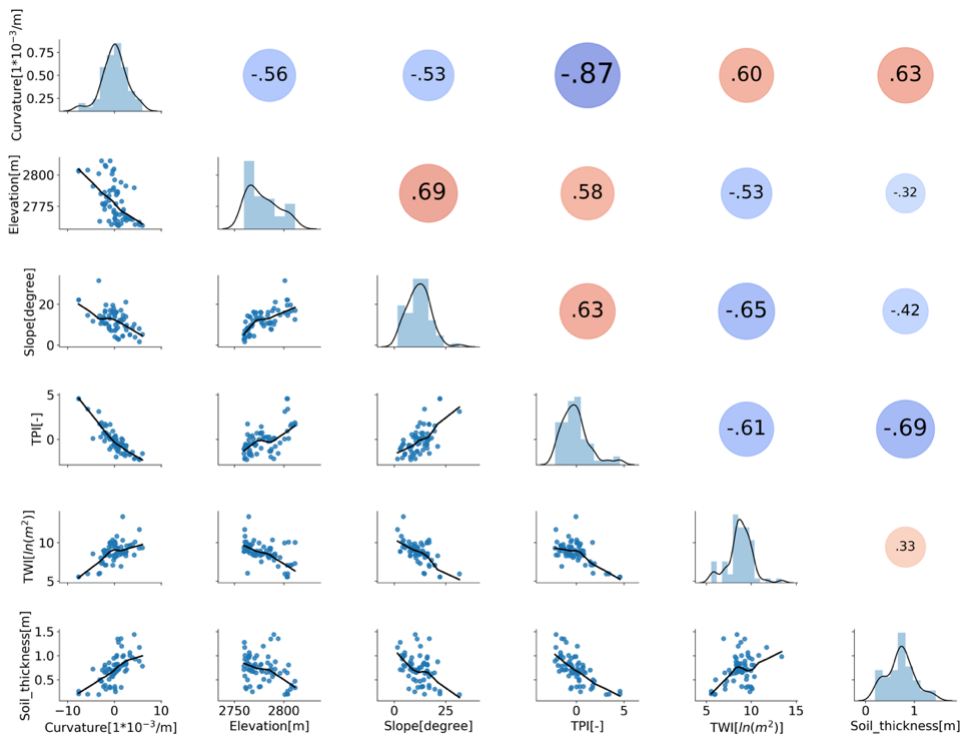


Figure 5: Correlation analysis between soil thickness and the top five most highly correlated topographic features). TPI is 10 m resolution topographic position index, Curvature is 10 m resolution curvature, Slope is 10 m resolution slope degree, TWI is the 10 m resolution topographic wetness index, and Elevation is 1 m resolution DEM.

Since we have a limited number of soil samples (78), we use the five most highly correlated features as a collection of metrics to perform the Random Forest modeling. We use the Random Forest model with leave-one-out cross validation to predict the soil thickness and compare with the hybrid modeling results (Fig. 6). The result shows that the hybrid model (RMSE = 0.196 m) outperforms the Random Forest model (RMSE = 0.225 m) by ~13%. The comparable performance between Random Forest and the hybrid model suggests that (1) the correlations of soil thickness with topographic metrics are the major driving factors, and (2) the hybrid model is applicable to other sites given similar soil types and topography, without requiring many datasets given the application of process-based laws. To improve the results from machine learning, one may need to collect more data from additional sampling points. However, the advantage of this hybrid model is that there are only seven parameters to calibrate, and fewer sampling points are required. The extension to other watersheds is also easier with the hybrid approach. This hybrid method also provides higher accuracy than Patton's method in this study site, particularly at very thin or thicker soil layers (Fig. S9). Finally, we note that the hybrid modeling approach not only provides the soil thickness distribution, but also other outputs from the model, including the surface soil transport and soil production rates as discussed below.

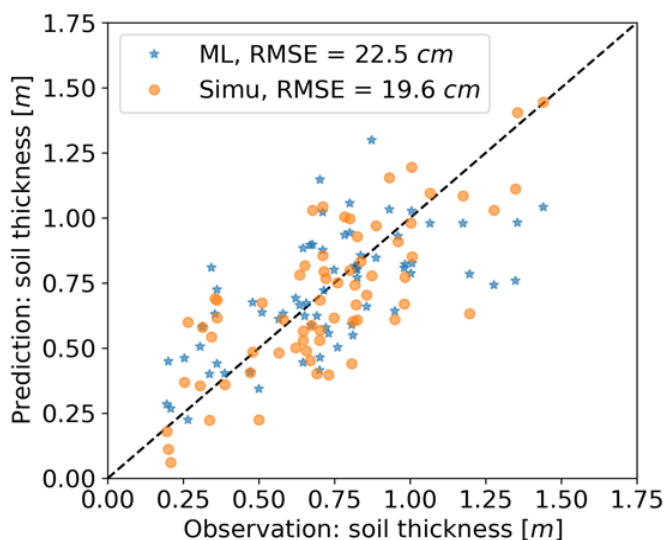


Figure 6: Comparison between observed and predicted soil thickness. Note, ML = machine learning based simulation, Simu = the hybrid model simulation, and RMSE = root-mean-square error.

4.5 Relationship between soil thickness, soil surface transport rates, and soil production rates in two aspects

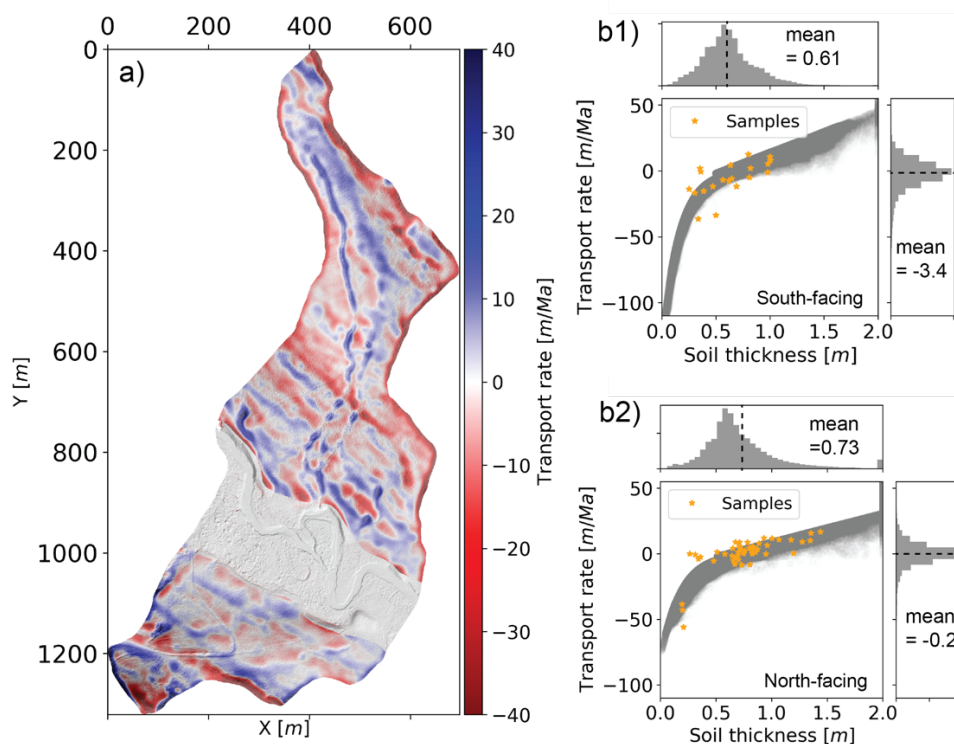
One of the advantages of this hybrid model compared with machine-learning models is that we can obtain the spatial maps of surface soil transport rates (Fig. 7) and soil production rates (Fig. 8). The probability density functions (PDFs) show that in general, the south-facing hillslope has a thinner soil thickness and a faster erosion rate than the north-facing hillslope (Fig. 7b). On the south-facing hillslope, where solar radiation is sufficient, soil moisture is a limiting factor that controls vegetation cover

in the coupled hydro-bio-geomorphological processes. In contrast, on the north-facing hillslope where solar radiation is limited, the energy becomes a limiting factor of critical zone processes (Pelletier et al., 2018). The higher potential evaporation of south-facing hillslopes results in lower mean soil moisture and thinner vegetation cover, thus triggering feedbacks that result in a higher surface soil erosion rate. Moreover, on the south-facing hillslope, the lower interception of rainfall due to thinner vegetation cover and more sand material from the soil texture (Fig. S10) also increase sediment mobilization by raindrop impacts.

30

The contribution of overland flow-driven soil transport (erosion and deposition) to the soil thickness formation is minor compared to the diffusion-driven soil transport. The water depth reaches steady-state after about six days with a constant rainfall intensity (i.e., 363 mm/yr) in the study area (Figure S11a). We apply this spatial map of the water depth to drive the soil transport by overland flow (Eqn. 3). The soil transport rate from overland flow mostly happens in the water pathways, which have no ponding after snow melting and storm events. The ratio of the soil transport rate from overland flow to the total soil transport rate is mostly less than 1% in the two hillslopes (Fig. S11b). This minor impact from overland flow also explains why the parameter K_d is not sensitively in this hybrid model.

35

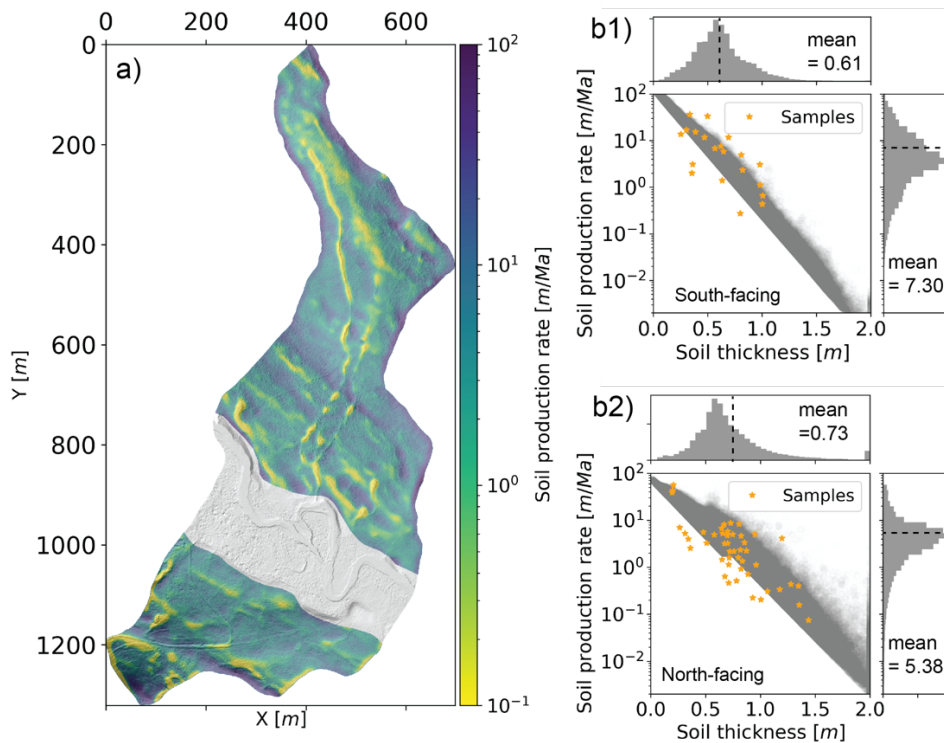


40

Figure 7: Map of soil surface-transport rate. (A) Spatial map of soil transport rate from modeling results. (b1 and b2) Relationship between soil thickness and transport rate for the south-facing and north-facing hillslopes, respectively. Positive values of transport rate represent deposition, and negative values represent erosion. The orange dots represent the soil thickness from field measurements.

45 The south-facing hillslope corresponds to a higher actual soil production rate than the north-facing hillslope, which is consistent with transport rates in that the south-facing hillslope has a higher erosion rate. One should note that the soil production rate here is different from bedrock weathering rate, which is controlled by water table dynamics (Wan et al., 2019). The actual soil production rate is controlled by the soil thickness and potential production rate, P_o (Eqn. 5). A thinner soil layer (south-facing) results in a faster actual soil production rate. A high evapotranspiration and rapid vertical infiltration result in lower P_o . P_o on the south-facing hillslope is slower than the north-facing hillslope (Table 1) due to the microclimate differences between the two hillslopes. On south-facing hillslopes, more of the incoming precipitation is lost to evapotranspiration, which results in less water available for runoff and infiltration (Tran, et al., 2019). In addition, the south-facing slopes experience brief periods of rapid vertical transport following snowmelt events and are drier overall than north-facing slopes (Hinckley et al., 2014).

55 Pelletier et al. (2013) uses an energy-based variable, Effective Energy and Mass Transfer (EEMT), which is a function of precipitation, temperature, and vapor pressure deficit, to quantify the potential rate of bedrock breakdown into soils. Their study also suggests that under comparable climatic conditions north-facing hillslopes have a higher EEMT, leading to higher P_o . However, the thicker soil thickness offsets the impact of P_o in that thicker soil thickness results in slower actual soil production rate. This is a possible reason why the north-facing hillslope has slower actual soil production rate even though it has a higher P_o .



60

Figure 8: Map of soil production rate. (A) Spatial map of soil bottom (either bedrock or saprolite) production rate from modeling results. (b1 and b2) Relationship between soil thickness and natural logarithm of soil production rate for the south-facing and north-facing hillslopes, respectively. The orange dots represent the soil thickness from field measurements.

5 Conclusion

65 Soil thickness plays a central role in the feedbacks among surface-subsurface water flow, vegetation, soil production, drainage density, and topography, and these in turn control soil thickness. In this study, we developed a data-driven hybrid model approach to predict the spatial distribution of soil thickness. The hybrid model that we introduced in this study overcomes the drawbacks of both mass-conservation laws and empirical relationships. To the authors' knowledge, this is the first study to use a hybrid approach to estimate soil thickness.

70 Our results show that this hybrid model provides slightly better accuracy than the Random Forest model (by ~13%) on soil thickness estimation. According to both the hybrid and Random Forest models, soil thickness is more strongly controlled by topographic metrics than vegetational features. The sensitivity analysis of the input parameters (seven in total) show that the diffusion coefficient of hillslope erosion is the most sensitive parameter. We found that smoothing lidar DEM over time has a
75 higher efficiency than smoothing it over space to obtain the optimal topographic curvature values, which provides the least error between the modelling results and sampling soil thickness.

This hybrid model is a flexible, generally applicable approach to predicting soil thicknesses. The hybrid model, with only seven parameters for calibration, can provide a relatively realistic soil thickness map at other study sites making use of a
80 relatively small number of samples. It can also provide additional output as compared to machine learning algorithms, including surface soil transport and soil production rates.

Based on field observation and the hybrid model simulation, the north-facing hillslope promotes deeper soil depth than the south-facing hillslope as a result of the different insolation at different aspects. The model analysis suggests that the south-
85 facing hillslope has a slightly faster actual surface transport rate and actual soil production rate than the north-facing hillslope. The potential soil production rate is higher on the north-facing hillslope, caused by relatively denser vegetation cover, less solar radiation, and wetter surface soil material as fundamentally controlled by aspect.

The limitation of the hybrid modeling approach developed here is that it would fail in alluvial depositional sites (i.e.,
90 floodplains) where topography is controlled primarily by flooding events (Yan et al., 2018) and strong human intervention landscapes where the surface topography is intensively reshaped for farming and other purposes (Kuriakose et al., 2009; Yan et al., 2020). Integrating process-based modeling, inverse modeling, and statistical analysis provides a thorough understanding of the fundamental mechanisms for soil thickness prediction in hillslopes. Although the example applications in this paper are

95 at two hillslopes, this hybrid model framework should have little limitation to analyze soil-mantled mountainous hillslopes
 after calibration with sampling dataset.

00

05

Table 1: Parameters used for fitting models of north-facing and south-facing, respectively

symbol	Physical meaning	unit	Value range	North-facing	South-facing
h_o	Normalized soil depth	m	0.12–0.22 ^{*,a,b,c,d}	0.20	0.18
P_o	Potential weathering rate or the maximum bedrock weathering rate	m/yr	4.0×10^{-5} – 1.4×10^{-4} ^{a,b,c,d}	1.0×10^{-4}	6.0×10^{-5}
\bar{h}	Spatially mean soil thickness among depositional area	m	0.33–0.61 ^e	0.55	0.44
a	The slope of the linear relationship between curvature and soil thickness among depositional area	m ²	42–55 ^e	50	45
K_d	Topography diffusion coefficient, which is controlled by vegetation cover, grain size, animal disturbance, etc.	m ² /yr	3.6×10^{-4} – 2.4×10^{-3} ^{d,f}	1.18×10^{-3}	1.8×10^{-3}
K_s	Soil erodibility by overland flow erosion, which is controlled by overland flow rate, soil cohesivity, grain size, etc.	m/yr	1.0×10^{-2} – 1.0×10^{-5} ^g	1×10^{-5}	2×10^{-5}
E_{thre}	The threshold value of annual soil thickness erosion rate that determines which model to use -- mass conservation method or Patton's method	m/yr	2.0×10^{-7} – 3.2×10^{-6}	2×10^{-6}	1.4×10^{-6}

*: we defined h as the distance along the norm direction to the land surface, which give $e^{-h\cos\theta/h_o}$, where θ is the slope of the land surface in degree (Pelletier and Rasmussen, 2009). In this case, h_o is adjusted to include $\cos\theta$ when referring to other literatures.

- 10 a: Heimsath, A. M., Dietrich, W. E., Nishiizumi, K. and Finkel, R. C.: The soil production function and landscape equilibrium, *Nature*, 388(July), 358–361, 1997.
- b: Heimsath, A. M., Chappell, J., Dietrich, W. E., Nishiizumi, K. and Finkel, R. C.: Soil production on a retreating escarpment in southeastern Australia, *Geology*, 28(9), 787–790, doi:10.1130/0091-7613(2000)28<787:SPOARE>2.0.CO;2, 2000.
- c: Heimsath, A. M., Furbish, D. J. and Dietrich, W. E.: The illusion of diffusion: Field evidence for depth-dependent sediment transport, *Geology*, 33(12), 949–952, doi:10.1130/G21868.1, 2005
- 15 d: Dietrich, W. E., Reiss, R., Hsu, M. and Montgomery, D. R.: A process-based model for colluvial soil depth and shallow landsliding using digital elevation data, *Hydrol. Process.*, 9, 383–400, 1995.
- e: Patton, N. R., Lohse, K. A., Seyfried, M. S., Godsey, S. E. and Parsons, S. B.: Topographic controls of soil organic carbon on soil-mantled landscapes, *Sci. Rep.*, 9(1), 6390, doi:10.1038/s41598-019-42556-5, 2019.
- f: Fernandes, N. F. and Dietrich, W. E.: Hillslope evolution by diffusive processes: The timescale for equilibrium adjustments, *Water Resour. Res.*, 33(6), 1307–1318, doi:10.1029/97WR00534, 1997.
- 20 g: Kilinc, M. Y. and Richardson, E. V.: Mechanics of soil erosion from overland flow generated by simulated rainfall, *Hydrol. Pap.*, 63, 1973.

Data and Code availability

The dataset and code used in the hybrid model are openly available at <http://doi.org/10.5281/zenodo.4445383>.

- 25 Remote sensing products can be accessed at <https://data.ess-dive.lbl.gov/view/doi:10.15485/1618131> and <https://data.ess-dive.lbl.gov/view/doi:10.15485/1617203>.

Author contributions

- QY performed the numerical and statistical calculations and produced the first draft of this paper. BD, SU, and QY conducted field sampling work. HW and BD supervised this study, contributed to the interpretation of this results, and reviewed several versions of the manuscript. HW also contributed significantly on the sensitivity analysis. JK contributed to the discussion and coding of curvature study and revised the manuscript. CIS supervised this study, particularly on the soil thickness evolution study, and revised the manuscript. SSH supervised this study and revised the manuscript. NF provided the remote sensing data and revised the manuscript.
- 30

Competing interests

35 The authors declare that they have no conflict of interest.

Acknowledgement

We acknowledge support from the Watershed Function Scientific Focus Area funded by the U.S. Department of Energy, Office of Science, Office of Biological and Environmental Research under Award no. DE-AC02-05CH11231. We thank Stijn Wielandt for his help in the field campaigns on soil samples collection. We thank Ilhan Ozgen for helping the overland flow simulation.

References

- Andrews, D. J. and Bucknam, R. C.: Fitting degradation of shoreline scarps by a nonlinear diffusion model, *J. Geophys. Res. Solid Earth*, 92(B12), 12857–12867, doi:10.1029/JB092iB12p12857, 1987.
- Breiman, L.: Random Forests, *Mach. Learn.*, 45(1), 5–32, doi:10.1023/A:1010933404324, 2001.
- 45 Brodrick, P., Goulden, T., Chadwick, K. D., Blonder, B., Brodie, E., Falco, N., Maher, K., Wainwright, H. and Williams, K.: Custom NEON AOP reflectance mosaics and maps of shade masks, canopy water content. Watershed Function SFA., 2020.
- Brugger, K. A.: Climate in the Southern sawatch range and Elk Mountains, Colorado, U.S.A., during the last glacial maximum: Inferences using a simple degree-day model, *Arctic, Antarct. Alp. Res.*, 42(2), 164–178, doi:10.1657/1938-4246-42.2.164, 2010.
- 50 Campolongo, F., Cariboni, J. and Saltelli, A.: An effective screening design for sensitivity analysis of large models, *Environ. Model. Softw.*, 22(10), 1509–1518, doi:10.1016/j.envsoft.2006.10.004, 2007.
- Carvalho, N., Forkel, M., Khomik, M., Bellarby, J., Jung, M., Migliavacca, M., Mu, M., Saatchi, S., Santoro, M., Thurner, M., Weber, U., Ahrens, B., Beer, C., Cescatti, A., Randerson, J. T. and Reichstein, M.: Global covariation of carbon turnover times with climate in terrestrial ecosystems, *Nature*, 514(7521), 213–217, doi:10.1038/nature13731, 2014.
- 55 Catani, F., Segoni, S. and Falorni, G.: An empirical geomorphology-based approach to the spatial prediction of soil thickness at catchment scale, *Water Resour. Res.*, 46(5), doi:10.1029/2008WR007450, 2010.
- Chadwick, K. D., Brodrick, P. G., Grant, K., Goulden, T., Henderson, A., Falco, N., Wainwright, H., Williams, K. H., Bill, M., Breckheimer, I., Brodie, E. L., Steltzer, H., Williams, C. F. R., Blonder, B., Chen, J., Dafflon, B., Damerow, J., Hancher, M., Khurram, A., Lamb, J., Lawrence, C. R., McCormick, M., Musinsky, J., Pierce, S., Polussa, A., Hastings Porro, M., Scott, 60 A., Singh, H. W., Sorensen, P. O., Varadharajan, C., Whitney, B. and Maher, K.: Integrating airborne remote sensing and field campaigns for ecology and Earth system science, *Methods Ecol. Evol.*, 11(11), 1492–1508, doi:https://doi.org/10.1111/2041-210X.13463, 2020.
- Dietrich, W. E., Reiss, R., Hsu, M. and Montgomery, D. R.: A process-based model for colluvial soil depth and shallow

- landsliding using digital elevation data, *Hydrol. Process.*, 9, 383–400, 1995.
- 65 Efron, B.: *The Jackknife, the Bootstrap and Other Resampling Plans*, edited by CBMS-NSF regional conference series in applied mathematics 1982, Society for Industrial and Applied Mathematics (SIAM), Philadelphia, PA., 1982.
- Fan, Y., Clark, M., Lawrence, D. M., Swenson, S., Band, L. E., Brantley, S. L., Brooks, P. D., Dietrich, W. E., Flores, A., Grant, G., Kirchner, J. W., Mackay, D. S., McDonnell, J. J., Milly, P. C. D., Sullivan, P. L., Tague, C., Ajami, H., Chaney, N., Hartmann, A., Hazenberg, P., McNamara, J., Pelletier, J., Perket, J., Rouholahnejad-Freund, E., Wagener, T., Zeng, X.,
- 70 Beighley, E., Buzan, J., Huang, M., Livneh, B., Mohanty, B. P., Nijssen, B., Safeeq, M., Shen, C., van Verseveld, W., Volk, J. and Yamazaki, D.: Hillslope Hydrology in Global Change Research and Earth System Modeling, *Water Resour. Res.*, 55(2), 1737–1772, doi:10.1029/2018WR023903, 2019.
- Gaskill, D. L.: *Geologic map of the Gothic quadrangle, Gunnison County, Colorado.*, 1991.
- Goulden, T., Hass, B., Brodie, E., Chadwick, K. D., Falco, N., Maher, K., Wainwright, H. and Williams, K.: NEON AOP
- 75 Survey of Upper East River CO Watersheds: LAZ Files, LiDAR Surface Elevation, Terrain Elevation, and Canopy Height Rasters., 2020.
- Grant, G. E. and Dietrich, W. E.: The frontier beneath our feet, *J. Chem. Inf. Model.*, 53(9), 1689–1699, doi:10.1017/CBO9781107415324.004, 2017.
- Hastie, R.: Problems for Judgment and Decision Making, *Annu. Rev. Psychol.*, 52(1), 653–683,
- 80 doi:10.1146/annurev.psych.52.1.653, 2001.
- Heimsath, A. M., Dietrich, W. E., Nishiizumi, K., Finkel, R. C., Mass, A. and National, L. L.: The soil production function and landscape equilibrium, *Nature*, 388(July), 358–361, 1997.
- Heimsath, A. M., Dietrich, W. E., Nishiizumi, K. and Finkel, R. C.: Stochastic processes of soil production and transport: erosion rates, topographic variation and cosmogenic nuclides in the Oregon Coast Range, *Earth Surf. Process. Landforms*,
- 85 26(5), 531–552, doi:10.1002/esp.209, 2001.
- Heimsath, A. M., Fink, D. and Hancock, G. R.: The ‘humped’ soil production function: eroding Arnhem Land, Australia, *Earth Surf. Process. Landforms*, 34(12), 1674–1684, doi:10.1002/esp.1859, 2009.
- Hengl, T., Heuvelink, G. B. M. and Stein, A.: A generic framework for spatial prediction of soil variables based on regression-kriging, *Geoderma*, 120(1), 75–93, doi:https://doi.org/10.1016/j.geoderma.2003.08.018, 2004.
- 90 Hinckley, E. L. S., Ebel, B. A., Barnes, R. T., Anderson, R. S., Williams, M. W. and Anderson, S. P.: Aspect control of water movement on hillslopes near the rain-snow transition of the Colorado Front Range, *Hydrol. Process.*, 28(1), 74–85, doi:10.1002/hyp.9549, 2014.
- Hubbard, S. S., Williams, K. H., Agarwal, D., Banfield, J., Beller, H., Bouskill, N., Brodie, E., Carroll, R., Dafflon, B., Dwivedi, D., Falco, N., Faybishenko, B., Maxwell, R., Nico, P., Steefel, C., Steltzer, H., Tokunaga, T., Tran, P. A.,
- 95 Wainwright, H. and Varadharajan, C.: The East River, Colorado, Watershed: A Mountainous Community Testbed for Improving Predictive Understanding of Multiscale Hydrological-Biogeochemical Dynamics, *Vadose Zo. J.*, 17(1), 180061, doi:10.2136/vzj2018.03.0061, 2018.

- Jackson, R. B., Lajtha, K., Crow, S. E., Hugelius, G., Kramer, M. G. and Piñeiro, G.: The Ecology of Soil Carbon: Pools, Vulnerabilities, and Biotic and Abiotic Controls, *Annu. Rev. Ecol. Evol. Syst.*, 48, 419–445, doi:10.1146/annurev-ecolsys-112414-054234, 2017.
- Joshua West, A.: Thickness of the chemical weathering zone and implications for erosional and climatic drivers of weathering and for carbon-cycle feedbacks, *Geology*, 40(9), 811–814, doi:10.1130/G33041.1, 2012.
- Kuriakose, S. L., Devkota, S., Rossiter, D. G. and Jetten, V. G.: Prediction of soil depth using environmental variables in an anthropogenic landscape, a case study in the Western Ghats of Kerala, India, *CATENA*, 79(1), 27–38, doi:10.1016/j.catena.2009.05.005, 2009.
- Lal, A. M. W.: Performance comparison of overland flow algorithms, *J. Hydraul. Eng.*, 124(4), 342–349, doi:10.1061/(ASCE)0733-9429(1998)124:4(342), 1998.
- Li, M., Foster, E. J., Le, P. V. V., Yan, Q., Stumpf, A., Hou, T., Papanicolaou, A. N. (Thanos), Wacha, K. M., Wilson, C. G., Wang, J., Kumar, P. and Filley, T.: A new dynamic wetness index (DWI) predicts soil moisture persistence and correlates with key indicators of surface soil geochemistry, *Geoderma*, 368, 114239, doi:https://doi.org/10.1016/j.geoderma.2020.114239, 2020.
- Morris, M. D.: Factorial sampling plans for preliminary computational experiments, *Technometrics*, 33(2), 161–174, doi:10.1080/00401706.1991.10484804, 1991.
- Nicótina, L., Tarboton, D. G., Tesfa, T. K. and Rinaldo, A.: Hydrologic controls on equilibrium soil depths, *Water Resour. Res.*, 47(4), doi:10.1029/2010WR009538, 2011.
- Patton, N. R., Lohse, K. A., Godsey, S. E., Crosby, B. T. and Seyfried, M. S.: Predicting soil thickness on soil mantled hillslopes, *Nat. Commun.*, 9(1), doi:10.1038/s41467-018-05743-y, 2018.
- Patton, N. R., Lohse, K. A., Seyfried, M. S., Godsey, S. E. and Parsons, S. B.: Topographic controls of soil organic carbon on soil-mantled landscapes, *Sci. Rep.*, 9(1), 6390, doi:10.1038/s41598-019-42556-5, 2019.
- Pelletier, J. D. and Rasmussen, C.: Geomorphically based predictive mapping of soil thickness in upland watersheds, *Water Resour. Res.*, 45(9), 1–15, doi:10.1029/2008WR007319, 2009.
- Pelletier, J. D., Barron-Gafford, G. A., Breshears, D. D., Brooks, P. D., Chorover, J., Durcik, M., Harman, C. J., Huxman, T. E., Lohse, K. A., Lybrand, R., Meixner, T., McIntosh, J. C., Papuga, S. A., Rasmussen, C., Schaap, M., Swetnam, T. L. and Troch, P. A.: Coevolution of nonlinear trends in vegetation, soils, and topography with elevation and slope aspect: A case study in the sky islands of southern Arizona, *J. Geophys. Res. Earth Surf.*, 118(2), 741–758, doi:10.1002/jgrf.20046, 2013.
- Pelletier, J. D., Broxton, P. D., Hazenberg, P., Zeng, X., Troch, P. A., Niu, G.-Y., Williams, Z., Brunke, M. A. and Gochis, D.: A gridded global data set of soil, intact regolith, and sedimentary deposit thicknesses for regional and global land surface modeling, *J. Adv. Model. Earth Syst.*, 8(1), 41–65, doi:10.1002/2015MS000526, 2016.
- Pelletier, J. D., Barron-Gafford, G. A., Gutiérrez-Jurado, H., Hinckley, E. L. S., Istanbuluoglu, E., McGuire, L. A., Niu, G. Y., Poulos, M. J., Rasmussen, C., Richardson, P., Swetnam, T. L. and Tucker, G. E.: Which way do you lean? Using slope aspect variations to understand Critical Zone processes and feedbacks, *Earth Surf. Process. Landforms*, 43(5), 1133–1154,

- doi:10.1002/esp.4306, 2018.
- Perron, J. T.: Numerical methods for nonlinear hillslope transport laws, *J. Geophys. Res. Earth Surf.*, 116(2), 1–13, doi:10.1029/2010JF001801, 2011.
- 35 Roering, J. J., Kirchner, J. W. and Dietrich, W. E.: Evidence for nonlinear, diffusive sediment transport on hillslopes and implications for landscape morphology, *Water Resour. Res.*, 35(3), 853–870, doi:10.1029/1998WR900090, 1999.
- Roering, J. J., Kirchner, J. W. and Dietrich, W. E.: Hillslope evolution by nonlinear, slope-dependent transport: Steady state morphology and equilibrium adjustment timescales, *J. Geophys. Res. Solid Earth*, 106(B8), 16499–16513, doi:10.1029/2001JB000323, 2001.
- 40 Roering, J. J., Marshall, J., Booth, A. M., Mort, M. and Jin, Q.: Evidence for biotic controls on topography and soil production, *Earth Planet. Sci. Lett.*, 298(1), 183–190, doi:10.1016/j.epsl.2010.07.040, 2010.
- Shangguan, W., Hengl, T., Mendes de Jesus, J., Yuan, H. and Dai, Y.: Mapping the global depth to bedrock for land surface modeling, *J. Adv. Model. Earth Syst.*, 9(1), 65–88, doi:10.1002/2016MS000686, 2017.
- 45 Taylor, J. A., Jacob, F., Galleguillos, M., Prévot, L., Guix, N. and Lagacherie, P.: The utility of remotely-sensed vegetative and terrain covariates at different spatial resolutions in modelling soil and watertable depth (for digital soil mapping), *Geoderma*, 193–194, 83–93, doi:10.1016/j.geoderma.2012.09.009, 2013.
- Temme, A. J. A. M. and Vanwallegem, T.: LORICA - A new model for linking landscape and soil profile evolution: Development and sensitivity analysis, *Comput. Geosci.*, 90, 131–143, doi:10.1016/j.cageo.2015.08.004, 2016.
- 50 Tesfa, T. K., Tarboton, D. G., Chandler, D. G. and McNamara, J. P.: Modeling soil depth from topographic and land cover attributes, *Water Resour. Res.*, 45(10), 1–16, doi:10.1029/2008WR007474, 2009.
- Tokunaga, T. K., Wan, J., Williams, K. H., Brown, W., Henderson, A., Kim, Y., Tran, A. P., Conrad, M. E., Bill, M., Carroll, R. W. H., Dong, W., Xu, Z., Lavy, A., Gilbert, B., Romero, S., Christensen, J. N., Faybishenko, B., Arora, B., Siirila-Woodburn, E. R., Versteeg, R., Raberg, J. H., Peterson, J. E., Hubbard, S. S., Billings, S. A., Richter, D. de B., Ziegler, S. E., Prestegard, K. and Wade, A. M.: Depth- and Time-Resolved Distributions of Snowmelt-Driven Hillslope Subsurface Flow and Transport and Their Contributions to Surface Waters, *Water Resour. Res.*, 55(11), 9474–9499, doi:https://doi.org/10.1029/2019WR025093, 2019.
- 55 Tran, A. P., Runge, J., Faybishenko, B., Dafflon, B. and Hubbard, S. S.: Assessment of spatiotemporal variability of evapotranspiration and its governing factors in a mountainous watershed, *Water*, 11(243), 1–17, doi:10.3390/w11020243, 2019.
- 60 Vanags, C., Minasny, B. and Mcbratney, A. B.: The dynamic penetrometer for assessment of soil mechanical resistance, *Reg. institue online Publ.*, 1–8 [online] Available from: www.regional.org.au/au/asssi/, 2004.
- Vanwallegem, T., Stockmann, U., Minasny, B. and Mcbratney, A. B.: A quantitative model for integrating landscape evolution and soil formation, *J. Geophys. Res. Earth Surf.*, 118(November 2011), 331–347, doi:10.1029/2011JF002296, 2013.
- Wainwright, H. M., Finsterle, S., Jung, Y., Zhou, Q. and Birkholzer, J. T.: Making sense of global sensitivity analyses, *Comput. Geosci.*, 65, 84–94, doi:10.1016/j.cageo.2013.06.006, 2014.
- 65

- Wan, J., Tokunaga, T. K., Williams, K. H., Dong, W., Brown, W., Henderson, A. N., Newman, A. W. and Hubbard, S. S.: Predicting sedimentary bedrock subsurface weathering fronts and weathering rates, *Sci. Rep.*, 9(1), 17198, doi:10.1038/s41598-019-53205-2, 2019.
- 70 Yan, Q., Iwasaki, T., Stumpf, A., Belmont, P., Parker, G. and Kumar, P.: Hydrogeomorphological differentiation between floodplains and terraces, *Earth Surf. Process. Landforms*, 43(1), 218–228, doi:10.1002/esp.4234, 2018.
- Yan, Q., Le, P. V. V., Woo, D. K., Hou, T., Filley, T. and Kumar, P.: Three-Dimensional Modeling of the Coevolution of Landscape and Soil Organic Carbon, *Water Resour. Res.*, 55(2), 1218–1241, doi:10.1029/2018WR023634, 2019a.
- Yan, Q., Le, P. V. V., Woo, D. K., Hou, T., Filley, T. and Kumar, P.: Three-Dimensional Modeling of the Coevolution of Landscape and Soil Organic Carbon, *Water Resour. Res.*, 55, 1218–1241, doi:10.1029/2018WR023634, 2019b.
- 75 Yan, Q., Kumar, P., Wang, Y., Zhao, Y., Lin, H. and Ran, Q.: Sustainability of soil organic carbon in consolidated gully land in China's Loess Plateau, *Sci. Rep.*, 10(1), 1–12, doi:10.1038/s41598-020-73910-7, 2020.