

Riccardo Reitano
Univ. Roma Tre

To: Dr. Jean Braun
Associate Editor, *Earth Surface Dynamics*

Reference: Response to referees comments and marked-up manuscript version showing the changes made regarding the submission "*Erosional response of granular material in landscape models*" [Paper esurf-2020-35] by R. Reitano, C. Faccenna, F. Funiciello, F. Corbi, S. D. Willett.

Dear Dr. Jean Braun,

first, we would like to thank the Reviewers for the corrections and their useful comments. We include hereafter, point by point, the reply (in *dark red italic* text) to all the Reviewers' comments. This file also includes the revised version of our manuscript with changes in a blue underlined font. We hope the manuscript is now ready for the publication in *Earth Surface Dynamics*.

With my kindest regards,

Riccardo Reitano, on behalf of all authors.

RESPONSE TO REFEREE COMMENTS

Reviewer #1 – Fabien Graveleau

The manuscript from R. Reintano et al., exposes an experimental modelling approach that aims at investigating the influence of material composition on the style of landforms (mostly drainage systems) when the material is submitted to rainfall erosion. This works goes a step beyond than an early work (Graveleau et al., 2011) that first published a mixture of granular materials suitable to be deformed under a compressive device (and actually, also in extensive and strike-slip settings) and eroded below an artificial rainfall device. In their manuscript, Reintano et al., do not deform their experimental materials, but they carefully analyzed the patterns of erosional landforms in their set of experiments. Technically, their device reproduces roughly a classical boundary conditions in terms of slope (15°) and precipitation rate (25-30 mm/h), but a significant improvement is the accurate topographic monitoring of the model evolution, and the use of such topographic dataset in terms of erosion law parameters. In total, the authors tested 6 different materials: 1 is a raw material (i.e., 100% Silica Powder), 4 are mixtures of Silica Powder + Glass microbeads and PVC, and a last one tested crushed quartz. The results from Reintano et al.'s concern first the characterization of the properties of the different components. It is basically the geometrical properties of grains, their chemical composition, their frictional properties (both at peak and stable friction conditions), porosity and permeability. All these properties have been measured with robust devices and repeated several times. Results are in good agreement with already published values, which allows to address later in the discussion the origin of erosional behaviors observed for each materials. Then concerning model results, the experimental device designed by the authors allows to carefully explore the morphometry and erosion laws observed for their experimental landforms and to investigate the control played by material composition. Particularly, DEM analysis allowed to confront experimental results to Hack's and Flint's law, together with quantifying precisely sediment outfluxes. Erosion law parameters are quantified and compared to nature. In addition, through the analysis of dimensionless parameters (for time notably) extracted from erosion laws, this work provides a novel quantitative understanding to address scaling issues and discussions about the similarity of experimental landforms to natural counterparts. Time scaling is particularly investigated. It is addressed in another way than in Graveleau et al. (2011) publication but

provides similar values. As a whole, the results obtained in this manuscript confirms that Silica Powder is a central component required to develop highly interesting and powerful experimental landforms. Several mixture composition appear suitable to develop morphotectonic experiments. In conclusion, this manuscript is a real valuable contribution that allow to goes a step forward in the demonstration that morphotectonic experiments should be considered as a useful tool to investigate active tectonics and relief dynamics questions. My comments and suggestions of corrections are really minor (see below). That's why I consider that this work definitely deserves publication at EGU Earth Surface Dynamics journal and ask for minor revision. With my best regards and all my congratulations to the authors,

Fabien Graveleau
Université de Lille

Main Comments

1) P4 Table 2: Regarding the accuracy of measurements, I am always questioned about the usefulness (and significance) to provide values with what appears to me as (over)accurate. For instance, is this really significant to provide density measurement at a 1kg/m^3 accuracy ? I know that devices like the one used in this work (helium pycnometer) can account for such accuracy, but is it that significant for granular materials for which handling techniques is so important in controlling the grain packing and therefore density ? To me, I would limit the accuracy of density to 10kg/m^3 . This is the same for the accuracy of frictional properties. In the literature, ring shear apparatus are able to provide really accurate estimations of cohesion and frictional angle. Is it worth since granular material are sensitive to handling techniques and compaction ? In the manuscript, concerning frictional values, the authors remain in the order of magnitude of 0.1 kPa for cohesion, which is fine for me. .

Density seems to correspond to “particle” (or specify) density ; that is the density of grain. So why specifying “dry” in table 1 ? It is also surprising to have such density values of grains for mixtures. Wouln't be worth to document the “apparent” or “bulk” density of the whole material ? That is the density of the material including grain and air.

We modify the text in agreement with what has been proposed by the Reviewer. Now the measurement for density and permeability in Table 2 show an accuracy of 10 kg/m^3 and 0.1 m s^{-1} or m^2 , respectively.

As specified by the author, the density measurements here proposed refer to particle density (the name is now corrected in Table 2). As it is extremely difficult to control the amount of water inside the models during the runs, we decided to show only the particle density.

2) L127 : “In this work the normal stress applied are in the range 25-200 kPa”.

This is normal stress applied in the Casagrande direct shear box. What about the range of normal stress in the erosional experiments ? Since the box is 5 cm deep, it should be in a range lower than the range of values applied by the Casagrande box. Would it be possible to add a few comment on this point ?

We agree with the Reviewer's comment. In the revised manuscript (lines 129-131) we have clarified this point.

3) L139 : “while the mechanical properties seem to show a common trend.”

What do you mean by “mechanical properties” ? Not clear.

We agree with the Reviewer's comment. Since we better specified this concept in sections 4.2 and 4.3 of the manuscript, we removed this sentence.

4) How many tests have been made per materials to obtain the average frictional properties?

Four tests per material have been made. We added this information in the revised version of the text (line 132).

5) L141 : Is porosity calculated for dry materials of water-saturated materials ? I presume it is dry... Because they are not the same between dry and wet conditions and differences can be slight or large depending on materials (Graveleau, PhD, 2008 ; p298). This is notably the case for Silica powder where compaction is apparently more efficient when the material is wet than dry (it is at least what we observed for the Silica Powder used in the device in Montpellier).

The porosity has been calculated in both dry and wet conditions. This information is highlighted in the revised version of the manuscript (lines 152-154).

6) Value of porosity for GM (0.26) is remarkably low compared for instance with Graveleau et al. (2011) who obtained 0.36, although D50 are not that different (88 μm for Graveleau et al., 98 μm for Reintano et al.). Any explanation of this?

We think that the reasons why the values are different may lie in the handling technique, due to the sensibility of porosity values to this. Because even if the approach for measuring porosity is different respect to Graveleau et al. (2011), we also compared our values with the ones obtained measuring the weight of the same volume of material water-saturated and after drying it in a air oven. This last approach is the same used in Graveleau et al. (2011).

7) L214 : “Erosion and sediment discharge are computed with ad-hoc MATLAB algorithms.” Any reference ?

Following the Reviewer’s suggestion, we added in the revised version of text (lines 221-222) a part in which we suggest looking into the repository (<https://dataservices.gfz-potsdam.de/panmetaworks/review/d63845bbb81e2460d1e1e69dfbb0a189719d5d4de9364314c30d814e3695d1e9/>) for any code has been specifically written for this paper.

8) L230-248 : I have much appreciated this temporal scaling analysis. It would be worth to discuss and compare a bit the results obtained here analytically by the authors (1 min \rightarrow 3 800 – 38 000 years) to what Graveleau et al. (2011) published (1s \rightarrow 100-300 years so 1 min \rightarrow 6 000 – 18 000 years) in a tectonically quiescent context or others (Strak et al., 2011) published in a tectonically active extensional setting (1s \rightarrow 65-375 years so 1 min \rightarrow 3 900 – 22 500 years). Which is remarkably in the same range !

We agree with the Reviewer’s comment. In the revised version of the manuscript (lines 389-396) we have compared our results with Graveleau et al. (2011) and Strak et al. (2011).

9) L276-277 : “The planar surfaces developing close to the lowermost side of the experiment have a slope of about 12°”

This angle could be rattaché to a threshold angle for detachment as Lague et al. (2003) or Graveleau et al (2011) mentioned. Comments could be welcome. Compare to Graveleau et al.’s values for MatIV (8°) which is significantly lower. Why ?

L281-282 : “The planar surfaces have a slope of 13° and 15° for the lower and upper surface, respectively”.

Idem. Comments for the lower slope. Suggestion for the reasons why it is higher than form CM2 ?

We agree with the Reviewer’s comment. We have added a discussion about the erosion threshold in section 4.3 (lines 469-481). As far as the angle for CM2 and its comparison with MatIV are concerned, we performed a better estimation of the surface slope using MATLAB, correcting the previous results. The results now show comparable values (line 286).

10) L303 : “As a knickpoint separating...”

Please, locate knickpoints by an arrow on Fig 7 to be sure to look at the good place along the profile.

L307-308 : “we can observe the propagation of the erosion wave from the bottom to the top.”

Please locate the “erosion wave” on the figure.

We thank the Reviewer for pointing out this missing information in Fig. 7. The figure is now revised according to the Reviewer’s suggestion.

11) L313-315 : “Sediment discharge plotted over time shows always two main phases (Fig. 8): phase I, fast removal of material from the model; phase II, slower removal of material with a lower discharge rate that is kept constant until the end of the experiment.”

A parallel with Fig10 in Graveleau et al (2011) obtained differently (by weighing output sediments) can be made. The shapes of the curves are the same. It is interesting to observe that the same shape is obtained with two different techniques.

We agree with the Reviewer’s comment. Indeed, that comparison has been already made in section 4.1. We have added a few lines also in the revised version of this section to better show the comparison (lines 386-388).

12) “L320-321 : “ while phase II is 6 g.min-1...”

Surprisingly, it is about twice larger than the value Graveleau et al. (2011) obtained (2.8g/min) for MatIV at a 15° slope (cf figure 10 in their paper). Any idea why it is twice higher ? Maybe this comment could come in the discussion (about L375-379).

We are not sure about the reason why such a difference. We can speculate that the differences are mainly due to the diverse experimental approaches (e.g., handling technique, apparatus, materials etc.) adopted in the two works. However, only ad hoc tests could confirm this idea. Hence, due to the uncertainties of the case, we decided to avoid commenting this specific point.

13) L364-367 : “The authors settled the tests at lower normal stresses than our measurements (< 5 kPa and < 250 kPa, respectively). The Mohr-Coulomb failure criterion shows that when low normal stresses are applied to the sample, the failure envelope tends to steepen, inducing values of internal friction angle higher than if measured at higher normal stresses (Schellart, 2000). This could explain the differences in results.”

Yes, I agree. As mentioned above, a short comment on the reason why the authors choose to measure the frictional properties under normal stress conditions that might be higher than in their model could be welcome.

We agree with the Reviewer, so we added a comment about the reasons behind the normal stresses adopted in the work (lines 129-131).

14) L435-446 : A comment on the magnitude of the lower slope of the model in terms of erosion threshold and tentatively in terms critical shield stress might be worth here. I think the authors have the expertise to likely propose something. This could be related to the mechanical strength of the materials the authors measured.

In agreement with the reviewer’s comment, we add a comment about the erosion threshold in section 4.3 (lines 469-481).

15) L452 – 462 : This paragraph is really interesting and worth in the publication but present phrasing renders the understanding not easy. I would suggest the authors to rephrase this section to be more straightforward. BTW, it is surprising that CM1 and CM3/CM4 have similar value of “c” but very different shape of basin.

In agreement with the Reviewer's suggestion, we provided the needed changes to this section, which now includes: 1) the meaning of Hack's Law and related constants; 2) ranges in the lab and nature; 3) the meaning of values of "h" larger than 0.5. We think that now the readers can better understand the meaning of the analyzed parameters.

16) L454-455 : "Values of h greater than 0.5 are typically interpreted as relative to basin elongation with increasing size".

What about "c" ?

With the aim of making the section 4.4 more clear, we have only provided natural range for the constant "c", focusing on the meaning of "h" in terms of drainage network geometry.

17) L482-484 : "Both ksn_MOD and .MOD (Fig. 12) are generally comparable with data coming from natural compilations (e.g. Kirby and Whipple, 2012). The matching of ksn and . between models and nature supports future development and application of the analog materials tested in this study for modeling landscape evolution."

What is written here is of course really important and should be strengthened to become more convincing for the audience. Presently, this comment is certainly "too short" to convince. Values of ksn or . could be quoted for instance. The geological contexts of selected natural examples could be also mentioned.

We agree with the Reviewer. Now Figure 12 includes field data. Natural compilations are also proposed in the text (e.g. Kirby and Whipple, 2012).

17) Figure 7: For CM3 and CM5, it is surprising to see the T2 profile above the T1 profile.

We thank the Reviewer for pointing out this error in the figure. The stream extraction coming from Topotoolbox also extracted a numerical artifact at the bottom of the box. We fixed these streams in the revised version of the manuscript.

18) Figure 10: Phase I and II could be merged on a single diagram to emphasize the decrease in sediment discharge rate between the two phases.

We agree with the Reviewer's comment and we have changed the revised figure accordingly.

Reviewer #2 – Michele Cooke

The paper presents a nice parametric study for a range of potential analog materials that could be used in coupled deformation and erosion models. The careful study very nicely contributes to our knowledge of these materials and will be a very valuable resource for future studies. Delineating a material recipe that can effectively simulate both deformational and erosional processes within the same experiment will enable many future investigations into the fascinating coupled feedbacks between these processes. I have a few suggestions that may strengthen the paper. These suggestions primarily relate to the framing and presentation of the findings rather than the results themselves, which are nicely gathered.

Main Comments

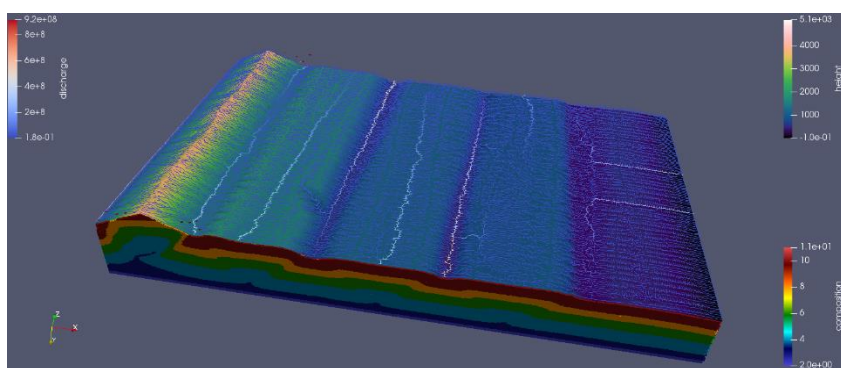
1) The need for analog models of erosion presented within the introduction can be strengthened. A reader unfamiliar with analog approaches might not be convinced that these approaches are needed from reading

the somewhat vague statement in the manuscript that computation capacities are limited (line 40). Can you provide some examples of the limits of computational models? One approach may be to follow the reasoning presented in Reber et al (2020) for the benefit of analog models over numerical approaches. But the authors may have other even more compelling reasons to offer the reader.

In agreement with the Reviewer's suggestion, we have modified the text adding a part in which we clarify the reason why we are using analogue models, and which are the advantages as respect to numerical modelling (lines 40-44). We welcomed the suggestion by the Reviewer and implemented the text also citing the work from Reber et al. (2020).

2) The study can benefit from stronger support for the performance assessment. The manuscript frames its primary goal as “finding an analogue material that best mimics the erosional behavior of the natural prototype.” The part that is missing is how specifically is good behavior assessed. How ‘should’ a slope of 15 degrees respond to the simulated precipitation rate? How do we know what experimental response is correct or wrong? The text states that a proper concave upward river profile is desirable (line 309) but are there some plausible conditions that would yield more or less concavity to the profile? My, albeit very basic, understanding of fluvial mechanics is that the concavity of river profiles relates to the different strength of channel bed materials along the profile. If the material is uniform along the river profile, what degree of concavity is expected? This information is very important for helping us assess the performance of the material. Can you add to the figure 7 the range of expected profile shapes? Could you use numerical solutions for similar slope and precipitation but at crustal scale and with a range of soil/rock properties to validate the performance of the analog materials? The comparison of the laboratory observations to numerical models may be more straight-forward than comparison to natural systems because the numerical models can have uniform properties and starting slope.

We revised the manuscript following the Reviewer's comment. What we are searching for in this study is a material that creates the same morphologies of those observed in natural orogens when is subjected to a) a tilt of 15° (the choice of the angle comes also from previous works as indicated in the text at lines 209, 384); b) a rainfall rate between 25 and 30 mm/h; c) by the only gravitational force without any other external forcing. In particular, the main argument when defining a “good” or “proper” analogue material is the channelization. A proper material should display channelization, with branching river network. As highlighted in section 2.2.1, we have channelization when the ratio between precipitation rate and infiltration capacity induces the surface runoff that, together with the mechanical properties of the material (cohesion, internal friction angle), allows for the formation of channels. Moreover, as explained in sections



2.2.1, 4.4 and 4.5, the model must be consistent with Hack's Law and slope-area scaling. We applied changes to the revised version of the manuscript trying to clarify this goal (lines 80-81, 185-187, 403-407). Following the Reviewer's suggestion, we also changed Figure 7, adding the shapes where concavity (θ) is 0, 0.5 and 1. Due to the very big range of natural values for θ (and also k_{sn}), we think it would

be clearer for the reader to see the shapes of the theoretical profiles. As far as the potential strength of the comparison between analogue and numerical simulations is concerned, we really appreciated the Reviewer's comment, as this topic will be studied in a future work not only because time consuming but also because of its high importance. Here we attach a picture of the coupled models we are currently running.

3) Presumably, each of the tested combinations of analog materials may be suitable for different conditions of geologic substrate or precipitation rate. Perhaps one recipe is best suited for ‘typical’ settings but others

could be used if you want to look at some atypical geomorphic settings. Providing some guidelines for the conditions under which each recipe could be suitable (or not) would be helpful.

We agree with the Reviewer's comment. It is true that a combination of those materials may lead to some typical geomorphological settings (narrow or wide channels, more or less incise etc.). The difficulties lay in the link between the applied rainfall and the developed morphologies. The CMI experiment is a good example of this concept. The rainfall imposed for the experiments (including CMI) remarks wet regions on Earth. But the structures that we observe in our model CMI, can be developed in nature in arid regions. Anyway, other materials (or combinations of materials) would not be suitable for landscape evolution models, because they do not satisfy the criteria for "good" or "proper" analogue material highlighted before, even in different climatic conditions or geological settings. Unfortunately, such study would be very time consuming and specific for a given process, while we are focusing on mountain building and erosion.

4) The comparison in section 4.5 of geomorphic parameters to measurements from crustal geomorphic systems and the limits for various processes is very interesting. Can you please add the values of K and theta for detachment limited and transport limited systems to figure 12? This will aid in the comparison. The last sentence of this paragraph asserts the match of the parameters with nature. Please add the ranges for geomorphic estimates of K and theta to figure 12.

In agreement with the Reviewer's comment, figure 12 displays now also natural values for k_{sn} and θ . These values have been selected from field data coming from different areas and data compilations.

5) Just a small note on porosity. If I understand correctly, the porosity is measured by comparing the volume prior to and after shaking. Doesn't this presume that they packing has no voids after shaking? If so, this doesn't seem realistic within granular materials which cannot pack with zero porosity. Maybe I'm missing something about this particular method of porosity measurement.

The approach used to measure the material porosity has been implemented to reproduce measuring conditions close to the experimental ones. We are not assuming that the packing has no voids after shaking, but we are measuring the porosity before and after the shaking. The selected porosity value is the one recorded once the porosity values reach a plateau. We confirmed these values measuring the weight of material water-saturated and after the oven drying.

Last but not least, in the revised version of the manuscript we have edited every grammatical error/mistyping the Reviewers has highlighted. We have also added the references proposed by the Reviewers.

References

- Graveleau, F., Hurtrez, J., Dominguez, S. and Malavieille, J.: A new experimental material for modeling relief dynamics and interactions between tectonics and surface processes, *Tectonophysics*, 513, 68–87, doi:10.1016/j.tecto.2011.09.029, 2011.
- Kirby, E. and Whipple, K. X.: Expression of active tectonics in erosional landscapes, *Journal of Structural Geology*, 44, 54–75, doi:10.1016/j.jsg.2012.07.009, 2012.
- Reber, J. E., Cooke, M. L. and Dooley, T. P.: What model material to use? A Review on rock analogs for structural geology and tectonics, *Earth-Science Reviews*, 103107, 2020.
- Strak, V., Dominguez, S., Petit, C., Meyer, B. and Loget, N.: Interaction between normal fault slip and erosion on relief evolution: Insights from experimental modelling, *Tectonophysics*, 513(1–4), 1–19, doi:10.1016/j.tecto.2011.10.005, 2011.

Erosional response of granular material in landscape models

Riccardo Reitano¹, Claudio Faccenna^{1,2}, Francesca Funicello¹, Fabio Corbi^{1,3}, Sean D. Willett⁴

¹Dipartimento di Scienze, Laboratory of Experimental Tectonics, Università “Roma Tre”, Rome, 00146, Italy

²Department of Geological Sciences, Jackson School of Geosciences, The University of Texas at Austin, Austin, TX, USA

³Istituto di Geologia Ambientale e Geoingegneria - Consiglio Nazionale delle Ricerche, Rome, Italy

⁴Department of Earth Sciences, ETH-Zürich, Sonneggstrasse 5, 8092 Zürich, Switzerland

Correspondence to: Riccardo Reitano (r.reitano@gmail.com)

Abstract. Tectonics and erosion/sedimentation are the main processes responsible for shaping the earth surface. The link between these processes has strong influence on the evolution of landscapes. One of the tools we have for investigating coupled process models is analogue modeling. Here we contribute to the utility of this tool by presenting laboratory-scaled analogue models of erosion. We explore the erosional response of different materials to imposed boundary conditions, trying to find the composite material that best mimics the behaviour of the natural prototype. The models recreate conditions in which tectonic uplift is no longer active, but there is an imposed fixed slope. On this slope the erosion is triggered by precipitation and gravity, with the formation of channels in valleys and diffusion on hillslope that are function of the analogue material. Using Digital Elevation Models (DEMs) and laser-scan correlation technique, we show model evolution and measure sediment discharge rates. We propose three main components of our analogue material (silica powder, glass microbeads and PVC powder) and we investigate how different proportions of these components affect the model evolution and the development of landscapes. We find that silica powder is the main responsible for creating a realistic landscape in laboratory. Furthermore, we find that varying the concentration of silica powder between 40 wt.% and 50 wt.% (with glass microbeads and PVC powder in the range 35-40 wt.% and 15-20 wt.%, respectively) results in metrics and morphologies that are comparable with those from natural prototypes.

1 Introduction

Whenever tectonics creates topography, erosion and surface processes act in response to the imposed gradient, tending to [reduce topography, and with time, remove all relief](#). During the last decades a strong theoretical background has been built based on field- and analytical observations (e.g. Howard, 1994; Kirby and Whipple, 2001, 2012; Tucker and Whipple, 2002; Whipple et al., 1999; Whipple and Tucker, 1999, 2002) but since natural observations provide only a snapshot of processes acting at different timescales (e.g. Castillo et al., 2014; Cyr et al., 2014; Pederson and Tressler, 2012; Sembroni et al., 2016; Vanacker et al., 2015) a quantitative framing of the existing feedbacks between surface processes and tectonics in modifying the topography remain a difficult task. Analytical, numerical and analogue models are often used by tectonic geomorphologists to improve the understanding of the feedbacks between tectonics and surface processes. Numerical models have the advantage of a straightforward quantitative and parametric approach and the possibility to be conducted with precise boundary conditions. Previous numerical and analytical focused on: the mathematical implementation in solving the stream power law (Braun and Willett, 2013); the interaction between surface processes and the velocity discontinuities bounding a double-verging orogenic wedge (Braun and Yamato, 2010); the coupling between climate, erosion and tectonics (e.g. Batt and Braun, 1999; Beaumont et al., 1992, 2001, 2004; Jamieson et al., 2004; Ueda et al., 2015; Whipple and Meade, 2004); the interaction between surface processes and multilayer folding systems (Collignon et al., 2014); the role of orographically enhanced precipitation in a double-verging 2D model (Willett, 1999; Willett et al., 1993); the control exerted by tectonic strain (Castellort et al., 2012; Duvall and Tucker, 2015; Goren et al., 2015) or interaction with tectonics in three dimensions (Ueda et al., 2015). Nevertheless, the computational capacities necessary to realistically simulate geologic features coupled with erosion using complex rheologies and/or three-dimensional settings [still place strong limitations on numerical runs. Furthermore, spatial features such as spacing of rivers are often mesh-dependent, making them a function of the modeler input of the mesh resolution](#).

Analog models can in principle overcome these limitations, allowing a useful direct control on the evolution of the studied physical process ([e.g. Reber et al., 2020](#)). [These are free to evolve following the physics acting on them, without needing for external control, apart from boundary conditions](#). The coupling between tectonics and surface processes has been investigated using sand-box like analogue apparati including removal of material by hand or with a vacuum cleaner (e.g. Hoth et al., 2006; Konstantinovskaya and Malavieille, 2011; Malavieille et al., 1993; Mulugeta and Koyi, 1987) or the application of a defined precipitation rate for a spontaneously-developing landscape (e.g. Bonnet, 2009; Lague et al., 2003; Schumm and Parker, 1973; Tejedor et al., 2017). The former models can be considered as “dry” models, where no water is added to the system. In this case, brittle wedges are typically built, and after a certain amount of shortening the material is removed from the wedge and sifted in the lower basins. The latter models can be considered as “wet” because water is added to the system and is responsible for erosion, transport and sedimentation. Wet models mainly focus on surface uplifting/lowering (e.g. Bonnet and Crave, 2003; Hasbargen and Paola, 2000; [Ouchi, 2011](#); Schumm and Rea, 1995; Singh et al., 2015) or in creating topography by horizontal advection (e.g. Graveleau et al., 2015; Graveleau and Dominguez, 2008a; [Guerit et al., 2016](#); Viaplana-Muzas et al., 2019). Different granular materials have been used, like dry quartz sand (e.g. Persson et al., 2004), silica powder (e.g. Bonnet, 2009), mica flakes (e.g. Storti et al., 2000), glass microbeads (e.g. Konstantinovskaya and Malavieille, 2011), natural loess (e.g. Lague et al., 2003), walnut shells (e.g. Cruz et al., 2008) or *ad-hoc* composite materials (e.g. Graveleau et al., 2011, 2015). These materials show different behavior in response to the external forcing, and their characterization is a key ingredient for scaling analogue models. The link between the properties of the materials and their tuning on the morphological response is not well defined yet. Even if some recent efforts have been done on pure materials [and mixes](#) ([e.g. Bonnet and Crave, 2006](#); Graveleau et al., 2011), an *excursus* on the role played by the concentration of every component in a composite material is still lacking. Here we focus on [analogue materials](#) exploring how different concentrations of granular materials influence the erosional, physical and mechanical response of several composite materials with the overarching goal of finding a material that best mimics the erosional behavior of the natural prototype. We also focus on mechanical properties of the same materials, which will be involved in future projects.

2 Experimental Approach

In this study we analyzed four different brittle granular materials to be used as rock analogues for the upper crust: Silica Powder (SP), Glass Microbeads (GM), Crushed Quartz (CQ), PolyVinyl Chloride powder (PVC). These pure materials are suited in five different mixes, in different proportions, while one single material (SP) is tested on its own (Tab. 1). The selection has fallen on granular materials because:

- a) They have the proper physical properties to simulate downscaled crustal rock behavior under laboratory conditions in a natural gravity field (e.g. Davis et al., 1983; Lallemand et al., 1994; Mulugeta and Koyi, 1987; Schreurs et al., 2001, 2006, 2016; Storti et al., 2000; Storti and McClay, 1995). As a matter of fact, they obey to Mohr-Coulomb failure criterion, showing strain-hardening prior to failure at peak strength and strain-softening until a stable value is reached (stable friction) ([Lohrmann et al., 2003](#); Schreurs et al., 2006);
- b) they reproduce reasonable geomorphic features due to developing of erosion/sedimentation processes like incision, mass wasting and diffusive erosion, transport and sedimentation, although important differences in behavior and characteristics have emerged (Graveleau et al., 2011, 2015; Graveleau and Dominguez, 2008b; Viaplana-Muzas et al., 2019).

In the following, we describe a) scaling to the natural prototype; b) geotechnical characterization of the materials (including geometrical and physical/chemical properties, frictional properties and permeability); c) erosional characterization. [We also define which conditions a proper analogue material should satisfy to be used in landscape evolution models](#).

2.1 Mechanical properties

Here we describe the mechanical properties of four granular materials mixed in different proportions. The aims of this analysis are to study how mechanical properties affect erosion style and to define properties that will be used in future works, where the materials will be involved in experiments where active tectonics and erosion act simultaneously. In five experiments the analogue material are mixtures of the previous materials at various percentage (CM1-5, Tab. 1). In Graveleau et al. (2011), the authors display how these different pure materials (excepting CQ, which was not considered in their work) show advantages and disadvantages in responding to erosion and sedimentation, in terms of morphological features developed, and brittle behavior. For example, GM and PVC produce high scarps with almost no channelization when erosion is applied, but realistically reproduce the brittle rheology of the upper crust (Graveleau et al., 2011). SP morphologies scale well with natural landscapes, but the higher strength of the powder induces unreliable structures under deformation. To overcome the above limitations of materials used as single “ingredient”, the authors suggested that a mixture of these three granular materials can be the most appropriate choice. Following Graveleau et al. (2011), here we focus on these mixes rather than pure materials. The latter are still analyzed, highlighting their role in the mix.

We measured geometrical, physical and frictional properties such as grain size and shape, density, porosity and permeability, internal friction angle and cohesion. We measured frictional properties of experimental granular material (internal friction coefficient μ and cohesion C) with a Casagrande shear box. We performed tests for peak and stable friction at variable normal stresses. Density has been measured with a helium pycnometer. The grain size has been estimated via a series of sieves of decreasing openings dimension (from 250 μm to 45 μm). The material passing the 45 μm sieve has been analyzed using sedimentation in a distilled-water tank, with a hydraulic pump for recirculation of water and a thermal control for estimation of water density. We also used a laser diffractometer for checking the reliability of the previous measurements. A qualitative analysis has been carried out using a Scanning Electron Micrograph (SEM) for the shape of grains and composition.

2.1.1 Geometrical and physical/chemical properties

The materials physical properties like grain size, density, porosity and permeability are listed in Table 2. The SP is a very fine powder ($D_{50} = 20 \mu\text{m}$), with clasts of different shape and size (Fig. 1): the smallest ones, are elongated and may lay on bigger clast, with a very high roughness. These characteristics require a careful use of this powder, due to the danger for the respiratory system. The density is the highest among the studied components ($2661 \pm 1 \text{ kg m}^{-3}$). We obtain composition of $\sim 95\%$ SiO_2 , $\sim 3\%$ Al_2O_3 , $\sim 1\%$ K_2O and $< 1\%$ of Na_2O , MgO and CaO (Fig. 2). The CQ has bigger dimensions with respect to SP ($D_{50} = 87 \mu\text{m}$), with medium sphericity of the clasts and high roughness. The composition is very similar to silica powder (with $\sim 0.5\%$ of FeO) and so is the density, slightly lower ($2588 \pm 1 \text{ kg m}^{-3}$). GM ($D_{50} = 98 \mu\text{m}$) have a very high sphericity and a very low roughness, where density ($2452 \pm 1 \text{ kg m}^{-3}$) is lower than the CQ. The GM qualitative composition is made of $\sim 69\%$ of SiO_2 , $\sim 15\%$ of Na_2O , $\sim 10\%$ of CaO , $\sim 4\%$ of MgO , $\sim 1\%$ of Al_2O_3 and $< 1\%$ of K_2O and fluorine. Finally, the PVC ($D_{50} = 181 \mu\text{m}$) has a similar shape respect to glass microbeads but less uniform. The density is the lowest among the components ($1402 \pm 1 \text{ kg m}^{-3}$), and this has a strong effect on the erosive properties of the material, as we will show afterwards. We did not perform SEM measurements of the PVC, due to the complexity of its chemical composition ($(\text{C}_2\text{H}_3\text{Cl})_n$). The grain size, density and shape of grains in the mixes are function of the percentage of every single material that form it (Tab. 2).

2.1.2 Frictional properties

A good crustal analog material must fail following the Mohr-Coulomb failure criterion (e.g. Davis et al., 1983; Davy and Cobbold, 1991; Krantz, 1991):

$$\tau = \mu\sigma + C \tag{1}$$

where τ is the shear stress corresponding to the normal stress σ on the failure plane, and μ is coefficient of internal friction defined as $\mu = \tan(\varphi)$, with φ angle of internal friction. For geomorphic experiments, where water is added to the system, parameters like μ and C strongly control the evolution of the experiment, because they change with the amount of water. The brittle granular materials typically used in laboratory models have low elasticity and undergo plastic deformation when their yield strength is reached, sliding along discrete fault-analog planes (e.g. Panien et al., 2006; Ritter et al., 2018; Rossi and Storti, 2003; Schreurs et al., 2016). Deforming granular materials satisfy Mohr-Coulomb criterion (Eq. 1), that highlights the relationship between shear stress τ and normal stress σ on the failure plane. The criterion typically shows a linear trend for σ in the order of kPa and MPa, but a convex-outward envelope for normal stresses in the order of hundreds of Pa or lower (Schellart, 2000). In this work the normal stress applied are in the 25-200 kPa range. [Estimation of normal stress at the base of our models is about 1 kPa. The experimental tests are then only an underestimate of the real mechanical behavior within the models. Nevertheless, the tests provide useful insight into the frictional properties of the analogue materials.](#) For every test ([four tests per material](#)) we defined peak friction (the first peak in the shear curve (Fig. 3) reflecting hardening-weakening during strain localization and then fault initiation) and stable friction (the plateau after peak friction representing friction during sliding (e.g. Montanari et al., 2017)). A shear box has been used. It consists of a steel box (Rossi and Storti, 2003) split across its middle in two small blocks with an area of $6 \times 6 \text{ cm}^2$ each. The bottom block is fixed, while the top block moves at constant velocity of $0.165 \text{ mm min}^{-1}$. Two dynamometers record horizontal and vertical displacement. The tests were made in water saturated condition. From every measurement we defined the material internal friction coefficient (μ , slope) and cohesion (C , intercept) for peak and stable friction. Results for every material and mix are listed in Table 2. Between pure materials SP shows the highest values for φ and C ($33\text{-}40^\circ$ and $0\text{-}8.5 \text{ kPa}$ respectively). For GM internal friction angle is about $23\text{-}25^\circ$ and the cohesion is close to 0 or negative, so is not considered in this analysis. PVC shows the same conditions for C , with an internal friction angle between 25° and 32° . The frictional properties for the CQ are similar to SP, with φ between $30\text{-}33^\circ$ and C between $4.5\text{-}6.6 \text{ kPa}$. The mixes show a strong variability for φ and C , with average values about 31° and 6 kPa , respectively. The values of φ and C do not highlight the increasing of SP concentration from CM2 to CM5.

2.1.3 Porosity and permeability

Porosity is defined as the ratio between the volume of voids or pore spaces (V_V) and the total volume (V_T):

$$\gamma = \frac{V_V}{V_T} \quad (2)$$

The porosity has been computed measuring the volumetric change of a weighted amount of material respect to an ideal condition where no pores are in the samples. We used a vibrating plate looking for the best compaction of material and measured the variation in volume. We used this technique to draw close to the experimental conditions. This procedure has been repeated several times for each composite material. Unfortunately, porosity is dependent on the handling technique, it is thus impossible to precisely control the porosity of the materials during preparation. The values of porosity for single materials and mixes are shown in Table 2. [We also measured porosity by weighing the same volume of material in water-saturated condition and after drying it in an air oven. The results are directly comparable between the two different techniques of measurement.](#) GM shows the lowest porosity (0.26) between pure materials while SP and CQ the highest one (0.36-0.37, respectively). As far as the mixes is concerned, only CM1 shows values higher than 0.40, while porosity is around 0.30 from CM2 to CM5.

Permeability represents the ability of a material to transmit fluids. This property has been tested using an oedometer and measuring the velocity of water flowing through the sample. This parameter is essential in controlling the evolution of our models, as it will be explained later in the text. SP has the lowest permeability ($3.56 \cdot 10^{-14} \text{ m}^2$) while GM has the highest permeability ($2.87 \cdot 10^{-12} \text{ m}^2$). CM1 shows the highest permeability between the various mixes ($7.42 \cdot 10^{-13} \text{ m}^2$). From CM2 to CM5 (from 40 and 70 wt.% of SP) the permeability slightly decreases. However, CM3 and CM5 do not strictly follow this trend:

the former has the lowest permeability observed in mixes ($9.25 \cdot 10^{-14} \text{ m}^2$), while the latter show a value comparable with CM2 and CM4 but slightly higher ($4.06 \cdot 10^{-13} \text{ m}^2$). The permeability values for mixes are then in the order of 10^{-13} m^2 .

2.2 Erosional characterization

2.2.1 Erosion laws and erosive properties

In a stream channel, the relationship between channel slope S and contributing area A is often expressed through Flint's Law (Flint, 1974), and takes the form

$$S = k_s A^{-\theta} \quad (3)$$

where k_s and θ are the steepness and concavity index respectively. The most common erosion law, consistent with slope-area scaling, for channelized processes is a power law function of the contributing area A and surface gradient S , defined as the "stream power" law (e.g. Howard, 1994; Tucker and Whipple, 2002; Whipple and Tucker, 1999)

$$\frac{dz}{dt} = KA^m S^n \quad (4)$$

where z is the elevation of the stream channel (i.e. dz/dt elevation trough time), K is the erosional constant (bound up to the erosional efficiency) that contains information about lithology, climate and channel geometry (Howard et al., 1994; Whipple and Tucker, 1999), while m and n are two positive dimensionless exponents, with the ratio m/n (i.e. the concavity index θ) that typically falls between 0.4 and 0.7 (Tucker and Whipple, 2002). This model is better known as a "detachment-limited" stream power model, because in tectonically active regions or in condition of steep topography, the channel erosive power is high and limited by its capacity to detach particles from the bedrock (Tucker and Whipple, 2002; Whipple and Tucker, 2002). It is possible to rewrite Eq. (4) in terms of distance x along the stream using Hack's Law (Hack, 1957)

$$A = k_a x^H \quad (5)$$

where k_a is a scaling coefficient and H is the reciprocal of the Hack's exponent. Combining Eq. (4) and Eq. (5) we obtain

$$\frac{dz}{dt} = \kappa x^{Hm} S^n \quad (6)$$

where $\kappa = Kk_a^m$. In our experiments, K , κ , m , n , H should be constant (for the same experiment), due to the homogeneous lithology and constant precipitation rate.

[A proper analogue material for landscape evolution models](#) should erode via localized, area-dependent processes (i.e., advection in valleys), diffusion (i.e., on hillslopes) and mass wasting. [Primarily, it must develop channelization in response to accumulated flow](#). This requires that precipitation collects in surface drainage networks, with branching channels in order to be consistent with Hack's Law and slope-area scaling. For the erosional behavior of the composite material, the ratio between precipitation rate and infiltration capacity appears to be the main factor controlling the geomorphological response. If the precipitation rate is higher than the infiltration capacity, the model can develop surface runoff ([Graveleau, 2008](#)). Otherwise, the water flows [through and inside the model](#), inducing fast erosion through discrete and rapid events. Fine sand or powders have been typically used for geomorphic experiments (e.g. Babault et al., 2005; Hasbargen and Paola, 2000), so that runoff could develop (i.e., low infiltration capacity due to the grain size). Nevertheless, different materials exhibit different emergent morphological characteristics when precipitation is imposed. Among the pure materials presented above, only SP (or a mix with SP) successfully reproduces linear incision (e.g. Bonnet and Crave, 2006; Graveleau et al., 2011; Schumm and Parker, 1973; Tejedor et al., 2017), while GM, PVC (Graveleau et al., 2011) and CQ erode mostly by diffusion or mass wasting.

2.3 Experimental Setup for erosional characterization

For studying the composite materials response to applied boundary conditions (precipitation rate and slope), we developed a new experimental setup depositing the material into a box on an inclined plane under rainfall (precipitation). Both the initial slope for

the apparatus and the precipitation rate are kept constant. No kinematic conditions of sidewalls are applied: no active tectonic is thus reproduced in our model.

The experimental setup is made of three different devices (Fig. 4): the box, the rainfall- and the monitoring systems. The material box controls the imposed initial slope, while the rainfall system triggers surface erosion. The evolution of the model is recorded with digital images and a laser scanner. The only forcing applied to the models is due to the gravity acceleration, that allows for the erosion triggered by slope and rainfall.

2.3.1 Box

The box is a plexiglass tank $0.35 \times 0.3 \times 0.05 \text{ m}^3$, filled with the experimental material, water saturated (about 25 wt.%). After pouring the material into the box and leveling, it is left flat at least 12 hours, to avoid prior deformations. The slope of the box is then fixed at 15° , in analogy to what has been done in Graveleau et al. (2011).

2.3.2 Rainfall system

Three nozzles fixed to an aluminum frame produce a high-density fog in which the droplet size is small enough ($\leq 100 \mu\text{m}$) to avoid rainsplash erosion (e.g. Bonnet and Crave, 2006; Graveleau et al., 2012; Lague et al., 2003; Viaplana-Muzas et al., 2015). The precipitation rate is controlled by both water pressure and the number of sprinklers. In our models the precipitation rate is fixed to $25\text{-}30 \text{ mm h}^{-1}$. The configuration allows for a homogeneous droplets distribution with a spatial variation of about 20%. The precipitation rate induces surface runoff, channel incision and gravity-driven processes that are responsible for the erosion of the model.

2.3.3 Monitoring system

Each experiment is recorded using one camera and a laser scanner. The camera records the model evolution in oblique view. The laser horizontal and vertical resolution are 0.05 mm and 0.07 mm, respectively. The scans are converted in digital elevation models (DEMs) using MATLAB. DEMs are analyzed with TopoToolbox (Schwanghart and Scherler, 2014) for geomorphological quantifications. Erosion and sediment discharge are computed with *ad-hoc* MATLAB algorithms ([see Data availability for accessing the codes](#)). Stopping the rainfall and letting the surface dry is required to avoid distortions during the laser scan. For the first hour pictures and scans are taken every 15 min, then every 30 min and 60 min, depending on model evolution rate.

2.4 Scaling analysis

An analogue model should be scaled by its geometry, kinematic, dynamic and rheological properties (e.g. Hubbert, 1937; Ramberg, 1981). The length scaling factor ($h^* = h_{\text{model}}/h_{\text{nature}}$) commonly used in sandbox experiments for deformation in the upper crust with granular material ranges between 10^{-5} and 10^{-6} (e.g. Cruz et al., 2008; Davy and Cobbold, 1991; Konstantinovskaya and Malavieille, 2011; Persson et al., 2004; Storti et al., 2000). Hence, 1 cm in the model may be in the range of 1 – 10 km in nature. The gravitational acceleration model-to-nature ratio is set to 1 ($g^* = g_{\text{model}}/g_{\text{nature}}$) working in the natural gravitational field. The density of the dry quartz sand or corundum sand employed in literature defines the model-to-nature ratio for density ($\rho^* = \rho_{\text{model}}/\rho_{\text{nature}}$) to be around 0.5 – 0.6. Since the dimensionless coefficient of internal friction is very similar between the analogue material and the natural crustal rocks, the cohesion/body forces scaling factor can be expressed as

$$\sigma^* = \rho^* g^* h^* \quad (7)$$

Typical values of this scaling factor are in the order of 10^{-6} , so that 1 Pa in the model would correspond to about 1 MPa in nature (e.g. Buiter, 2012; Graveleau et al., 2012).

The classical approach of analog modelling of convergent wedges is time independent (i.e., the evolution of the model is independent from convergence rate). Here, together with compressional tectonics we also model erosion with the perspective of

implementing the tested materials in analog models where tectonics and erosion are coupled. Therefore, following Willett (1999), we introduce a time scaling factor t^* which is the ratio between the mass flux added to the system F_{in} over the mass flux removed F_{out} . F_{in} is defined as follow:

$$F_{in} = v_c h \quad (8)$$

where v_c and h are the convergence velocity and initial thickness of the layers considered, respectively. F_{out} is defined as:

$$F_{out} = 4KL^2 \quad (9)$$

where K is a constant proportional to bedrock incision efficiency and precipitation rate (Eq. 4 and 6) and L is the wedge width. Assuming $m = 0.5$ and $n = 1$ in Eq. (4) (e.g. Whipple and Tucker, 1999), the K parameter has the dimension of time^{-1} . Therefore, the mass balance can be expressed as the ratio between these two fluxes:

$$M_b = \frac{4kL^2}{v_c h} \quad (10)$$

M_b is a dimensionless number, so keeping it the same in the experiment as in nature (in the same gravity field) it is possible to derive the scaling factor for time rewriting Eq. (4) as

$$\frac{4k^*L^*}{v_c^*} = 1 \quad (11)$$

and considering that k^* has the dimension t^{-1} , so that

$$t^* = \frac{4L^*}{v_c^*} \quad (12)$$

where $*$ marks the model over nature dimensionless ratio for every quantity, as defined before. With this scaling factor, considering $L^* = 10^{-5} - 10^{-6}$ and $v_c^* = 8 \cdot 10^4$, 1 min in the model corresponds to 3.8 – 38 kyr in nature.

Experimentalists are always in search of a perfect dynamic scaling for their models. Scaling all the aspects of geological processes is very difficult to achieve, if not impossible (Reber et al., 2020). For example, using granular materials leads to a length scaling inherently not perfect: grains in the order of 0.1 – 1 mm in laboratory, assuming a length scaling factor of 10^{-5} , would correspond to 10 to 100 m in nature, which is obviously overestimated. For landscape evolution models even more issues are linked to fluid flow or sediment transport (Paola et al., 2009). Nevertheless, these experiments provide an “unreasonable effectiveness” (Paola et al., 2009) that allows for their interpretation in terms of scaling by similarity (Reber et al., 2020). When the models and their natural prototype behave in a similar way, it is indeed possible to infer information about the prototype studying the processes acting on the model (Reber et al., 2020), because of the scale independency of the processes.

3 Results

We present six different models carried out with the same boundary conditions (i.e. imposed slope, precipitation rate and experimental time) and different mixed materials (Tab. 1). The same models have been conducted multiple times to ensure the reproducibility of the experimental results. The results presented in this paper are just a selection from amongst these repetitions. We tested mixes with different concentration of CQ, SP, GM and PVC, accounting for the differences in erosional responses, starting from what is already known in literature. These materials (except CQ) are also used in Graveleau et al. (2011) for the authors selected mix, named “MatIV”, composed of 40% SP, 40% GM, 18% PVC and 2% graphite powder. The same mix is here represented by CM2, where PVC is 20 wt.% due to the absence of graphite. Therefore, this mix has been set as our reference model for further analysis. From this starting point, we increased the SP concentration (from 40 to 70 wt.%, from CM2 to CM5) lowering the GM and PVC concentration. Two experiments were carried out using only SP (SM1) and a mix with the same proportion of CM2 but with SP replaced by CQ (CM1).

The analysis illustrates the erosional properties showing the influence of different composition on the morphology of the landscape, the river longitudinal profile, the sediment discharge and erosion. All eroded material leaves the system; therefore, sedimentation is not modelled.

3.1 Morphology of erosion

In the reference experiment CM2 the rainfall system induces channel incision and triggers mass wasting processes of portion of the analogue materials adjacent to stream channels. Both advection in channels and diffusion processes on hillslopes are present. A well-developed river network evolves 5 minutes after initiation. Single channels coalesce in basins with the increase of erosion and they are separated by sharp ridges. Three main basins are located at the upper part of the model (Fig. 5). The planar surfaces developing close to the lowermost side of the experiment have a slope of about 9° , six degrees lower than the initial imposed slope. The bottom of the valleys and the peak are generally separated by 1-2 cm relief (Fig. 6). CM1 evolution differs substantially from the reference model CM2. No channel incision is observed (Fig. 5), while diffusion and mass wasting are the dominant processes. Two different planar surfaces are formed, separated by a vertical scarp convex upward. An elongated elevated body stands close to the left boundary, related to the boundary effect itself. The planar surfaces have a slope of 12° and 10° for the lower and upper surface, respectively. The 12° slope is reached after 5 min from the beginning of the experiment, where a proto scarp is already formed. Subsequently, the scarp moves backward for about 60 min at a rate $> 0.4 \text{ cm min}^{-1}$, following which the scarp continues retreating but at a slower rate ($< 0.1 \text{ cm min}^{-1}$). The difference in elevation between the two planar surfaces is 2-3 cm. In the experiment SM1 channel incision is strong and affects all the model. Almost no mass wasting processes are observed. The landscape evolution for this model is similar to CM2. Four main basins are observed (Fig. 5), with a series of smaller basins linked to the major ones. Two of these basins stand on the leftmost part of the model and are separated by two main ridges (Fig. 6). The rightmost basins have a small ridge separating them. The ridges between different basins can attain a slope close or even higher than 90° . The planar surfaces that form at the end of the experiment have a slope between 9° and 10° , 6° or 5° lower than the imposed initial slope. On the slopes bordering the basins several small channels form. Further increasing the SP concentration changes the erosional response of the model (Fig. 5, 6). Channel incision becomes the main process acting on the model with the SP concentration from 40 wt.% to 50 wt.%. Further increase in the amount of SP produces more and narrower channels (Fig. 5). An anastomose system develops in CM5. In CM3, CM4 and CM5 the morphologies develop after around 10 minutes from the beginning of the experiment and are almost constant through the evolution of the models. No proper basin develops in these models and there is no evidence of diffusive processes on hillslopes. As a matter of fact, swath profiles transverse to the rivers show strong variation in elevation with a small wavelength (Fig. 6). The valleys are sharp and are very close each other and are not very incised.

3.2 River longitudinal profiles

The river longitudinal profile represents the variation of stream elevation relatively to the distance from the outlet. In Fig. 7 we show a river profile for each experiment at four different timesteps. The river evolution in the reference model CM2 follows a well-known path, starting from the undisturbed initial slope and arriving at the final profile with a concave-upward shape. We can also observe how the propagation of the perturbation, from the initial condition, migrates from the outlet to the headwater as a knickpoint separating the transient from the equilibrium channel profile. In the upper parts of the model, the erosion removes up to 3-3.5 cm of material. In CM1 no proper river develops and the main knickpoint defines the entire topography, with two planar surfaces separated by a sharp scarp (Fig. 5). The experiments of CM3, CM4 and CM5 show a common behavior. Channels do not show a concave-upward shape, or maybe only in the uppermost part of the model, while generally straight rivers develop. Nevertheless, we can observe the propagation of the erosion wave from the bottom to the top. As in the other models, the incision is strong, but it does not produce very deep valleys (1.5-2 cm). Finally, in SM1 it is difficult to observe a proper concave upward river profile. Some knickpoints in the earlier stage of river development are later obliterated (green profile in Fig. 7). The incision removes almost 3 cm in the northernmost portions of the model.

3.3 Sediment discharge and erosion

Sediment (mass) discharge can be characterized by the amount of material that leaves the model. Keeping the boundary conditions constant in all the experiments, its evolution is only function of the analogue material composition. Sediment discharge plotted over time shows always two main phases (Fig. 8): phase I, fast removal of material from the model; phase II, slower removal of material with a lower discharge rate that is kept constant until the end of the experiment. After an initial period in which the material quickly responds to the boundary condition with a high discharge rate that varies through time (the slope of the solid line in Fig. 8, phase I), the system reaches an equilibrium with an almost constant discharge rate (the slope of the dashed line in Fig. 8, phase II). In the reference model CM2 and in SM1 this occurs when basins reach the dimension of 40-80 cm². Different behaviors are shown by CM3, CM4 and CM5, where the phase I is extremely short (Fig. 8). In the reference model CM2, phase I last at least 80-90 min with a discharge rate around 15 g min⁻¹, while for phase II is 6 g min⁻¹ (both values are comparable with SM1). In CM1 the discharge rate decreases from phase I to phase II, from ca. 31 g min⁻¹ in the first 60 min to ca. 7 g min⁻¹ respectively. The loss in discharge rate between phase I and phase II is around 76% and [corresponds, in time, when the morphological evolution of the experiment significantly decreases, reaching an almost stationary condition](#). SM1 shows a similar trend, but a late and smoother transition from phase I to phase II happening after 140 min from the beginning of the experiment. The discharge rate is around 17 g min⁻¹ during the phase I, and 6 g min⁻¹ during the phase II. A strong decrease in sediment discharge over time is observed between CM2 and CM3, while from CM3 to CM5 the difference is smaller. In CM3, CM4 and CM5 phase I is very short in time (< 20 min) with a discharge rate that decreases with the increasing of SP concentration (from 19 g min⁻¹ to 13 g min⁻¹). Phase II then lasts for the rest of the experiments, with a discharge rate of about 3 g min⁻¹. In Fig. 9 we show the evolution of the erosion for the selected mix. In CM2 and SM1 river channels and basins are observed. In CM2 they are initially wider than in SM1. CM2 develops less basins, and they are less elongated. In CM2 the erosion appears to be more efficient, with a removal of material up to 3 cm depth in the uppermost portion of the model, close to the middle part of it. The erosion in CM1 follows the retreat of the scarps and it is mainly focused from the scarp to 5-6 cm over the outlet (Fig. 9). It erodes at least 3 cm of the model, although no channels form. The erosion is likely homogeneous on the lower planar surface. The channel incision in CM3 is evident and it reaches 2 to 2.5 cm depth. Here the erosion is focused in the channels, and they do not coalesce into basins. In CM4 and CM5 this affects even more the models. [The erosion is extremely low, carving the models with incision lower than 2/2.5 cm](#) (even lower in CM5).

4 Discussion

The experimental setting presented in this paper allows for the investigation of the materials and composite materials response to the applied boundary conditions (15° slope and precipitation rate of 25-30 mm h⁻¹). Despite simplifications (i.e., lack of tectonics, vegetation, storms, chemical weathering, seasoning, presence of infrastructures), these models highlight how the composition of the experimental material controls its erosional response. Respect to other works on the same topic (e.g. Bonnet and Crave, 2006; Graveleau et al., 2008, 2011), we focus on how varying the concentration of materials in a mix affect the models. Increasing the concentration of SP respect to GM and PVC results in straighter channels and lower incision. Using CQ instead of SP results in an almost uniform morphology where no proper basins or channels form, and where the erosion is mainly due to fast discrete events. Three main aspects arise from our results: a) SP is a key ingredient to properly model erosion, b) the physical properties of the experimental mix influence the sediment discharge rate and c) the experimental results can be used to better understand how surface processes act in nature. These considerations lay the foundations for choosing the proper analogue material for landscape evolution models. This indeed must satisfy conditions like morphology of the river channels, geomorphic indexes and erosional behavior, that should fall in the range of natural observations. We find that the best analogue material for landscape models settled in this work is represented by the composite materials used in models CM2 and CM3 (40 wt.% SP, 40 wt.% GM, 20 wt.% PVC and 50 wt.% SP, 35 wt.% GM, 15 wt.% PVC, respectively). Even if our compositions are comparable

with the ones used in other laboratories (e.g. Gravelleau et al., 2011), it is important to define how different combinations of the proposed materials may result in extremely different model evolution.

4.1 Comparison with previous works

The study by Gravelleau et al. (2011) represents the recent foundation for modelling landscape evolution. Therefore, we start discussing differences and similarities of our results with respect to their study. In Gravelleau et al. (2011) the authors tested four pure materials (silica powder, glass microbeads, PVC powder and graphite) and a single composite material (named “MatIV”). The composite material is composed by 40% silica powder, 40% glass microbeads, 18% PVC powder and 2% graphite. In our study we did not analyze graphite. We tested the effect of crushed quartz in composite materials, instead. Concerning pure materials (silica powder, glass microbeads and PVC powder), our estimations and measurements for sphericity, grain size, density and permeability match the ones made by Gravelleau et al. (2011) with unavoidable minor differences. We measured higher values of porosity for PVC, while permeability is in the same order of magnitude. Internal friction angles at peak and stable friction here presented are consistently lower for all our materials in comparison with Gravelleau et al. (2011). The authors settled the tests at lower normal stresses than our measurements (< 5 kPa and < 250 kPa, respectively). The Mohr-Coulomb failure criterion shows that when low normal stresses are applied to the sample, the failure envelope tends to steepen, inducing values of internal friction angle higher than if measured at higher normal stresses (Schellart, 2000). This could explain the differences in results.

The composite granular material presented by the author (“MatIV”) has been proposed in this work as analogue material used in CM2, except for graphite powder replaced by a slightly higher amount of PVC powder (see Results for more details). Density, porosity and permeability are comparable with what has been measured by Gravelleau et al. (2011) for MatIV. The values for peak friction and stable friction measured in this work are comparable to what has been measured by Gravelleau et al. (2011).

Erosion of the models also show similar evolution. The same rate for precipitation has been adopted in both works. We can observe strong similarity in the landscape reorganization between “MatIV” and CM2, looking at the frames in the evolution of the models at 15° slope (Fig. 9a-e, 10c in Gravelleau et al. (2011) and Fig. 5 of this manuscript). The mass discharges over time (Fig. 9f in Gravelleau et al. (2011) and Fig. 8 of this manuscript) for SilPwD (SM1 in this work) and “MatIV” coincide with our curves for SM1 and CM2 (at least for the first 90 min). During our phase II, the mass discharge observed in CM2 grows faster than “MatIV” (Fig. 9f in Gravelleau et al. (2011)). The mass discharge rate during phase II in CM2 is 6 g min^{-1} , while in Gravelleau et al. (2011) the discharge rate for “MatIV” is 2.8 g min^{-1} .

The analytical approach regarding the temporal scaling here proposed ($1 \text{ min} = 3.8 - 38 \text{ kyr}$) can be compared with what has been proposed by Gravelleau et al. (2011) and Strak et al. (2011). These authors proposed different approaches for time scaling with respect to this manuscript. However, they obtained the same order of magnitude of the model-to-nature scaling factors here proposed. In Gravelleau et al. (2011), in a context tectonically quiescent, the authors compared erosion rate in models and in natural tectonically inactive areas, starting from the geometric scaling. They estimated that 1 min in the models corresponds to $4.1 - 16.8 \text{ kyr}$ in nature. In Strak et al. (2011) the authors compared the models’ denudation rate with the one computed for the Weber and the Salt Lake City segments of the Wasatch fault, obtaining that $1 \text{ min} = 3.9 - 22.5 \text{ kyr}$. Both estimates fall in the range for temporal scaling proposed in this manuscript. The convergence of results grants the reliability of the experimental method, carried out independently at two different laboratories and by different working groups.

4.2 Silica powder for erosion models

SP is widely used in geomorphic experiments showing a good qualitative response to erosion/sedimentation and developing geomorphic markers that morphologically approximate the natural prototype (e.g. Bonnet and Crave, 2006; Gravelleau et al., 2011; Schumm and Parker, 1973; Tejedor et al., 2017). As already stated by Gravelleau et al. (2011), pure granular materials such as SP, GM or PVC are not able to fully satisfy the requirements for our analogue models. Pure GM and PVC show a

deformational style [characterized by a few localized thrusts and backthrusts, with a low surface slope around 10° coherently with the one](#) of convergent margins (Graveleau et al., 2011). However, [these materials](#) fail to reproduce a realistic landscape morphology. SP shows the opposite behavior (Graveleau et al., 2011 and references therein). [This material allows the models to develop streams, channels, basins and other geomorphic features, whereas deformation produces a high number of thrusts and backthrusts closely spaced, and a taper slope higher than 14°.](#) A weighted mixture of these three components is then needed to fulfill the requirements for a scaled analogue model, in terms of deformation and erosional style. We managed to pin down silica as main component in our composite materials, and we tested two different siliceous materials: CQ and SP. They are almost identical in their chemical composition (Fig. 2), but they strongly differ for grain size, sphericity and roughness (Fig. 1, Tab. 2). CM1 and CM2 have the same percentage of materials, but SP and CQ are switched. CM1 does not show channel incision, while CM2 is characterized by channel incision and mass wasting processes (Fig. 5). The channel incision becomes the main process acting on the surface moving from CM2 to CM5 (from 40 to 70 wt.% of SP), but an increase in the number of channels (Fig. 5) produce less incised structures (Fig. 9). Despite 100 wt.% of SP, SM1 does not develop only straight channels, differing from CM3 and CM5. We can state that the morphological response to erosion depends on the geometrical and physical parameters rather than on the chemical ones (Fig. 5, 8, 9, 10). Indeed, all the materials do not chemically react with each other and with water. The ratio $S_r = P/I_c$, where P is the precipitation rate and I_c the infiltration capacity, strongly controls the evolution of the experiments (Graveleau et al., 2011). When $S_r < 1$, I_c is greater than P , and most of the water coming from the raining system is drained internally, inside the porous material. A flow at the interface between the model and the bottom of the box develops, triggering mass wasting processes. This configuration makes very hard to develop a well-defined surface runoff, and we could expect the same results as in CM1. On the other hand, when $S_r > 1$, the precipitation rate allows for the development of a river network at the model surface (as in CM2). Of course, it is possible to slightly change the precipitation rate according to the purpose of the experiment, but the main control on S_r is exerted by I_c . This parameter is function of the permeability and, in turn, it is function of the grain-size, grain-size distribution and (effective) porosity (Carman, 1938, 1956; Kozeny, 1927). These factors are responsible for the differences between CQ and SP and are then responsible for the results of CM1 and CM2 (same concentration of materials but with CQ and SP, respectively). In fact, the grain size of CQ is one order of magnitude higher than SP, and the latter has a higher grain size distribution (Fig. 1). Permeability spans over two order of magnitude, from $2.34 \cdot 10^{-12} \text{ m}^2$ to $3.56 \cdot 10^{-14} \text{ m}^2$ for CQ and SP, respectively. The mix CM1 show higher permeability than CM2. These consideration lead to assess SP as best siliceous material for landscape evolution models rather than CQ. But due to the very small grain size of SP, suction and capillary forces are very strong when water is involved. Consequently, other components become necessary to promote mass wasting processes and for smoothing the mechanical behavior of SP to avoid unrealistic brittle structures (see Graveleau et al., 2011 and the beginning of this section). But going beyond what has already been done, we focused on testing how different combinations of SP, GM and PVC change the model results. Increasing the SP concentration should bring to configurations similar to SM1, but our results show that this is not the case. When SP is ≥ 50 wt.% of the composite material, only straight channels form, and they are not so incised if compared with the ones from SM1 or CM2 (Fig. 5, 9). CM3, CM4 and CM5 do not develop basins, and the erosion in the channels is limited (Fig. 9). Mass wasting processes and gravitational processes are absent, and the rivers flow in narrow canyons. In CM5 the behavior is even more peculiar and anastomose channels form with a very low incision (Fig. 5, 9). Thus, a mixture of SP, GM and PVC, where the former one has the highest concentration, develops forms that are very different from SM1, even if SP is 70 wt.%. We propose here that this is mainly due to the grain size distribution. The voids between the grains of GM and PVC are most likely filled with the material with the lowest grain size, SP. If the concentration of SP is high enough (≥ 50 wt.%) and water is added to the system, the strength of the material increases, and the erosional and mechanical response of the mix strongly change. [This is in agreement with measurement of frictional properties \(Tab. 2\).](#)

4.3 Sediment discharge rate as function of physical properties of analogue materials

Phase I and phase II differ in terms of sediment discharge rate (sdr). Independently from the material, phase I displays higher sdr than phase II. In phase I the models equilibrate with the boundary conditions imposed. The amount of potential energy triggers a fast reorganization of the system. In the first time steps the materials quickly leave the models, until the energy decreases and a new equilibrium is reached. Lowering the model slope toward an equilibrium shape slows down the erosional response of the model, entering in phase II (Fig. 8). In this latter phase the system has reached a balance with the boundary condition, and sdr shows a lower variability for a given model (Fig. 10). Despite these common points, features like the onset of the phases, their duration or the amount of discharged material differ among the models. During phase I all the models show a high variability in sdr (Fig. 10). Nevertheless, CM1 still has the highest mean sdr (red line in Fig. 10), that later decreases from CM2 to CM5. CM1 erodes through fast and discrete processes (e.g. mass wasting), while all the other models show also (or only) channel incision (Fig. 5). From CM2 to CM5 the sdr decreases. Due to the absence of chemical reaction between components and water, the differences in sdr are linked to the physical properties of the materials. In CM1 the subsurface water flow induces collapse of material in catastrophic events. In SM1 this does not happen. The very low permeability of the material inhibits significant subsurface flows. Here the erosion of the material is mainly linked to the ability of water to detach particles from the riverbed and carrying them outside the model. Initially, particles are detached when shear stresses exerted by water overcome the threshold for detachment of the grains in the analogue materials (Howard, 1994). The strength of SP thus controls the rate of incision. Similar considerations for CM2, but here the higher permeability can trigger both channel incision and gravitational processes. Surprisingly, CM3, CM4 and CM5 response to precipitation rate is very different from SM1 or CM2. From CM3 to CM5 the sdr strongly decreases in both phases (Fig. 10), even if components like GM and PVC are added to the composite materials. The properties of these two pure materials would produce an erosional response similar to CM1 (Graveleau et al., 2011). However, when SP is in a proportion higher than 50 wt.% the water capacity of detaching particles strongly decrease, so that even the incision is very shallow (Fig. 9) and so the sdr . No mass wasting processes act on these models, as suggested by the low permeability. We propose that the higher grain size distribution allows SP to fill the voids between the GM and PVC particles, lowering the permeability (Tab. 2) and increasing the material resistance with capillarity and electrostatic forces. In phase II the sdr variability is smaller, and the mean values are more representative of the whole sdr . The previous consideration on the role of grain size applies also in this phase, even if sdr is significantly lower. Up to now, we have talked about the balance between shear stress exerted by water and strength of the riverbed, as responsible for incision in the models. In the works from Lague et al. (2003) and Graveleau et al. (2011), the authors acknowledge the presence of an erosion threshold that must be overcome before significant erosion and transport occurs. Graveleau et al. (2011) proposed that the tilted downstream zone observed in the models may be related to the presence of this erosion threshold. We also observe this tilted downstream zone, accounting likely for the same erosional threshold. In the experiments performed by Lague et al. (2003), all the experiments reach a final height about 1 cm. This was independent of the initial condition. They related this limit elevation to an intrinsic threshold to erosion. They also approach the problem analytically, defining erosion laws in which a threshold term is present. Here, we recognized that the erosion threshold is mainly controlled by the mechanical strength of the materials used in the models, together with topographical parameters (e.g. gradient, rivers organization). From CM2 to CM5, the mechanical strength of the material appears to increase with the increasing of the concentration of SP in the mix, producing less incised landscapes, as highlighted by the morphologies (Fig. 5), the swath profiles (Fig. 6), the incision maps (Fig. 9) and the sediment discharge charts (Fig. 8 and 10).

4.4 Drainage network morphology

Our models are not meant to simulate any specific landscape, but to explore how material properties influence landscape development. However, despite the unavoidable limitations and simplifications of the model, it is tempting to compare the experimental and natural data. To do so, one can make a comparison to Hack's Law. Hack's Law (Eq. 5) can be also written as

$$L = cA^h \quad (13)$$

where L is the length of the channel in a basin and A its drainage area, c is a scaling coefficient and h is the scaling exponent referred to as Hack's exponent. The scaling coefficient c and the scaling exponent h in Eq. 13 are related to k_a and H in Eq. 5 by $c = k_a^{-1/H}$ and $h = 1/H$, respectively. Hack's Law represents the relationship between channel length and drainage area, and allows to analyze the geometry of the drainage network. Dodds and Rothman (2000) show that in nature h is in the range 0.44-0.56, while c is between 1.3 and 6.6 (for individual basins compared at their outlets). In our models, SM1 and CM2 show the lowest values of h (< 0.8). The scaling coefficient c for SM1 and CM2 is in the range 1-4 and 0-4, respectively (between the 25th and 75th percentile) (Fig. 11). CM4 shows values for c and h close to 1 and in the range 0.8-1, respectively, while CM5 has a slightly larger distribution. CM1 and CM3 show the lowest values for the scaling coefficient c . Comparing the length-area scaling of our analog models with observations (Fig. 5) we notice that the models are characterized by a very low degree of branching of the drainage network. Moreover, our calculations of h are systematically higher than 0.5 (Fig. 11). Values of h greater than 0.5 are typically interpreted as indicating basin elongation with increasing size (Rigon et al., 1996). In fact, the drainage basins in our models are typically elongated, especially for CM3, CM4 and CM5. SM1 and CM2 still have high values for h , but lower with respect to the other models. For SM1 and CM2 the basins are morphologically better defined (Fig. 5).

4.5 Steepness and concavity index

We use the following metrics for quantifying erosion in both the laboratory and nature: k_{sn} and θ . Both k_{sn} and θ represent a 1:1 metric for lab- to nature comparison. θ is dimensionless while k_{sn} , whose dimensions are a function of a reference concavity θ_{ref}) has been computed considering the length scaling factor $h^* = 10^{-5}$ (related to the strength of the granular materials), so that the values for A in analog models in Eq. (9) are in m^2 . For calculating k_{sn} in analog models (k_{sn_MOD}) we assumed $\theta_{ref} = 0.45$, similar to studies on natural landscapes. We analyzed river profiles of phase II of the experiments because this phase is linked to equilibrium of the system. In general, θ_{MOD} tends to be lower than 0.5 with the exception of CM2 and CM3, due to the straightening of river longitudinal profiles during the model run (Duvall, 2004; Whipple and Tucker, 1999). Despite the scattering of values for θ_{MOD} , SM1, CM2 and CM3 show average values higher than the other models, from 0.2 to 0.5 (for data between 25th and 75th percentile). For k_{sn_MOD} we found that values computed during phase II range generally between 10 and 140 $m^{0.9}$ (Fig. 12). The values for k_{sn_MOD} and θ_{MOD} do not allow for a unique discrimination between the types of erosion affecting the models, in terms of detachment-limited erosion and transport-limited erosion (Tucker and Slingerland, 1997; Tucker and Whipple, 2002; Whipple and Tucker, 2002), but we consider it likely that experiments are often transport-limited rather than detachment limited. The concavity index for detachment-limited streams are typically higher than for transport-limited streams (Brocard and Van der Beek, 2006; Whipple and Tucker, 2002), even if there is some evidence which suggest that this might not always be true (Gasparini, 1998; Massong and Montgomery, 2000; Tarboton et al., 1991). Of our models, CM2 and CM3 show the highest values for θ_{MOD} , while CM2 and SM1 show the highest values for k_{sn_MOD} . Both k_{sn_MOD} and θ_{MOD} (Fig. 12) are generally comparable with data coming from natural compilations (e.g. Kirby and Whipple, 2012) or studies on natural rivers in specific mountainous areas (e.g. . The matching of k_{sn} and θ between models and nature supports future development and application of the analog materials tested in this study for modeling landscape evolution.

5 Conclusions

We used mixes of water-saturated granular materials as analogs for the upper brittle crust analyzing the role played by geometrical and physical properties in landscape evolution models. Our experimental results illustrate how small variations in the composition of an analogue material can strongly affect the evolution of the geomorphological features and the mechanical response of the materials. According with previous works, we find in SP the main component of analogue materials for landscape evolution models, better if mixed with GM and PVC. We can now conclude that:

- a) granular materials and mixes of them deform following Mohr-Coulomb criterion;
- b) composite materials with smaller grain size distribution and higher grain size (order of 100-200 μm) do not allow for advection in valleys, due to higher permeability. The sediment (mass) discharge rate is high, and the erosion happens quickly in time;
- c) composite materials with higher grain size distribution with particles in the order of 10s of μm allow for both channel incision in valleys and diffusion on hillslopes;
- d) composite materials where the percentage of SP higher or equal to 50 wt.% show high number of channels but with a very low incision. The discharge rate is extremely low, and erosion and incision affect less the model.
- e) respect to the other models, SM1 and CM2 show more branching and well-defined basins, while CM2 and CM3 show higher values for concavity index.

The geomorphological observations carried out on the models here presented highlights how SM1, CM2, CM3, show features most similar to natural prototypes. Increasing the SP concentration from 40 to 50 wt.% (CM2 and CM3, respectively) leads to straighter channel better defined. For models coupling tectonics and surface processes, the material used in SM1 is not likely to be adequate, due to its deformational behavior ([section 4.2](#)). The Hack's exponent in all models was higher than observed in nature, but SM1 and CM2 exhibited the lowest values. Concavity index for all models tended towards values lower than in nature, except for CM2 and CM3, which showed good agreement with nature. All these considerations suggest that the materials used in models CM2 and CM3 should be implemented for reproducing analogue landscapes. Our findings are in agreement with previous works, and here we also quantified the differences between geomorphological indexes as function of composition of analogue materials, giving a further constrain on the choice of the materials. These mixes will be adopted in contexts of active tectonics in future works.

Data availability.

Digital images, topographic data from laser scans, scripts and raw data have been uploaded using GFZ Data Services and can be accessed through <http://pmd.gfz-potsdam.de/panmetaworks/review/d63845bbb81e2460d1e1e69dfbb0a189719d5d4de9364314c30d814e3695d1e9/>.

Acknowledgments.

We would like to thank Diego Sebastiani, Anita Di Giulio, Maurizio Di Biase and Andrea Di Biase from the geotechnical laboratory at Università "La Sapienza", for the fundamental help and for the useful discussions. We thank Stéphane Dominguez for providing us the materials that have been used as comparison to the materials presented in this manuscript. We thank the associate editor Jean Braun and the reviewers Fabien Graveleau and Michele Cooke for constructive comments. We also thank TPV Compound s.r.l. (Frosinone, Italy) for the helpfulness in providing us with PVC powder, and CNG Srl for their laboratories. In Fig. 9 we used the perceptually uniform colormap Roma by F. Cramer. The Grant to Department of Science, Roma Tre University (MIUR-Italy Dipartimenti di Eccellenza, ARTICOLO 1, COMMI 314 – 337 LEGGE 232/2016) is gratefully acknowledged.

References

- Babault, J., Bonnet, S., Crave, A. and Van Den Driessche, J.: Influence of piedmont sedimentation on erosion dynamics of an uplifting landscape: An experimental approach, *Geology*, 33(4), 301–304, doi:10.1130/G21095.1, 2005.
- Batt, G. E. and Braun, J.: The tectonic evolution of the Southern Alps, New Zealand: Insights from fully thermally coupled dynamical modelling, *Geophysical Journal International*, 136(2), 403–420, doi:10.1046/j.1365-246X.1999.00730.x, 1999.
- Beaumont, C., Fullsack, P. and Hamilton, J.: Erosional control of active compressional orogens, in *Thrust tectonics*, pp. 1–18, Springer., 1992.
- Beaumont, C., Jamieson, R. A., Nguyen, M. H. and Lee, B.: Himalayan tectonics explained by extrusion of a low-viscosity crustal channel coupled to focused surface denudation, *Nature*, 414(6865), 738–742, doi:10.1038/414738a, 2001.
- Beaumont, C., Jamieson, R. A., Nguyen, M. H. and Medvedev, S.: Crustal channel flows: 1. Numerical models with applications to the tectonics of the Himalayan-Tibetan orogen, *Journal of Geophysical Research: Solid Earth*, 109(6), 1–29, doi:10.1029/2003JB002809, 2004.
- Bonnet, S.: Shrinking and splitting of drainage basins in orogenic landscapes from the migration of the main drainage divide, *Nature Geoscience*, 2(11), 766–771, doi:10.1038/ngeo666, 2009.
- Bonnet, S. and Crave, A.: Landscape response to climate change: Insights from experimental modeling and implications for tectonic versus climatic uplift of topography, *Geological Society of America Bulletin*, (2), 123–126, 2003.
- Bonnet, S. and Crave, A.: Macroscale dynamics of experimental landscapes, *Geological Society, London, Special Publications*, 253(1), 327–339, doi:10.1144/gsl.sp.2006.253.01.17, 2006.
- Braun, J. and Willett, S. D.: A very efficient O(n), implicit and parallel method to solve the stream power equation governing fluvial incision and landscape evolution, *Geomorphology*, 180–181, 170–179, doi:10.1016/j.geomorph.2012.10.008, 2013.
- Braun, J. and Yamato, P.: Structural evolution of a three-dimensional, finite-width crustal wedge, *Tectonophysics*, 484(1–4), 181–192, doi:10.1016/j.tecto.2009.08.032, 2010.
- Brocard, G. Y. and Van der Beek, P. A.: Influence of incision rate, rock strength, and bedload supply on bedrock river gradients and valley-flat widths: Field-based evidence and calibrations from western Alpine rivers (southeast France), S. D. Willett et al., *Spec. Pap. Geol. Soc. Am.*, 398, 101–126, 2006.
- Buiter, S. J. H.: A review of brittle compressional wedge models, *Tectonophysics*, 530–531(0040), 1–17, doi:10.1016/j.tecto.2011.12.018, 2012.
- Carman, P. C.: Determination of the specific surface of powders I. *Transactions, J. Soc. Chemical Industries.*, 57, 225–234, 1938.
- Carman, P. C.: *Flow of gases through porous media*, 1956.
- Castelltort, S., Goren, L., Willett, S. D., Champagnac, J. D., Herman, F. and Braun, J.: River drainage patterns in the New Zealand Alps primarily controlled by plate tectonic strain, *Nature Geoscience*, 5(10), 744–748, doi:10.1038/ngeo1582, 2012.
- Castillo, M., Muñoz-Salinas, E. and Ferrari, L.: Response of a landscape to tectonics using channel steepness indices (ksn) and OSL: A case of study from the Jalisco Block, Western Mexico, *Geomorphology*, 221, 204–214, doi:10.1016/j.geomorph.2014.06.017, 2014.
- Collignon, M., Kaus, B. J. P., May, D. A. and Fernandez, N.: Influences of surface processes on fold growth during 3-D detachment folding, *Geochemistry Geophysics Geosystems*, 15, 3281–3303, doi:10.1002/2014GC005450., 2014.
- Cruz, L., Teyssier, C., Perg, L., Take, A. and Fayon, A.: Deformation, exhumation, and topography of experimental doubly-vergent orogenic wedges subjected to asymmetric erosion, *Journal of Structural Geology*, 30(1), 98–115, doi:10.1016/j.jsg.2007.10.003, 2008.
- Cyr, A. J., Granger, D. E., Olivetti, V. and Molin, P.: Quantifying rock uplift rates using channel steepness and cosmogenic nuclide-determined erosion rates: Examples from northern and southern Italy, *Lithosphere*, 2(3), 188–198, doi:10.1130/L96.1, 2010.

- Cyr, A. J., Granger, D. E., Olivetti, V. and Molin, P.: Distinguishing between tectonic and lithologic controls on bedrock channel longitudinal profiles using cosmogenic ^{10}Be erosion rates and channel steepness index, *Geomorphology*, 209, 27–38, doi:10.1016/j.geomorph.2013.12.010, 2014.
- Davis, D., Suppe, J. and Dahlen, F. A.: Mechanics of Fold-and-Thrust Belts and Accretionary Wedges, *Journal of Geophysical Research*, 88(B2), 1153–1172, doi:10.1029/JB089iB12p10087, 1983.
- Davy, P. and Cobbold, P. R.: Experiments on shortening of a 4-layer model of the continental lithosphere, *Tectonophysics*, 188(1–2), 1–25, doi:10.1016/0040-1951(91)90311-F, 1991.
- DiBiase, R. A., Whipple, K. X., Heimsath, A. M. and Ouimet, W. B.: Landscape form and millennial erosion rates in the San Gabriel Mountains, CA, *Earth and Planetary Science Letters*, 289(1–2), 134–144, doi:10.1016/j.epsl.2009.10.036, 2010.
- Dikshit, V. M.: Steepness Index Derived Areas of Differential Rock Uplift Rates in the Lanja Region From Southern Konkan Coastal Belt , *Maharashtra* , , 2(9), 221–230, 2015.
- Dodds, P. S. and Rothman, D. H.: S Caling , U Niversality , and, *Networks*, 28, 571–610, doi:10.1146/annurev.earth.28.1.571, 2000.
- Duvall, A.: Tectonic and lithologic controls on bedrock channel profiles and processes in coastal California, *Journal of Geophysical Research*, 109(F3), 1–18, doi:10.1029/2003jf000086, 2004.
- Duvall, A. R. and Tucker, G. E.: Dynamic Ridges and Valleys in a Strike-Slip Environment, *Journal of Geophysical Research: Earth Surface*, 120, 2016–2026, doi:10.1002/2015JF003618.Received, 2015.
- Flint, J. J.: Stream Gradient as a Function of Order, Magnitude, and Discharge, *Water Resources Research*, 10(5), 969–973, 1974.
- Gasparini, N. M.: Erosion and deposition of multiple grain sizes in a landscape evolution model, 1998.
- Goren, L., Castelltort, S. and Klinger, Y.: Modes and rates of horizontal deformation from rotated river basins: Application to the Dead Sea fault system in Lebanon, *Geology*, 43(9), 843–846, doi:10.1130/G36841.1, 2015.
- Graveleau, F.: Interactions Tectonique , Erosion , Sédimentation dans les avant-pays de chaînes : Modélisation analogique et étude des piémonts de l ’ est du Tian Shan (Asie centrale) , *Université Montpellier II.*, 2008.
- Graveleau, F. and Dominguez, S.: Analogue modelling of the interaction between tectonics, erosion and sedimentation in foreland thrust belts, *Comptes Rendus - Geoscience*, 340(5), 324–333, doi:10.1016/j.crte.2008.01.005, 2008a.
- Graveleau, F. and Dominguez, S.: Analogue modelling of the interaction between tectonics, erosion and sedimentation in foreland thrust belts, *Comptes Rendus - Geoscience*, 340(5), 324–333, doi:10.1016/j.crte.2008.01.005, 2008b.
- Graveleau, F., Hurtrez, J., Dominguez, S. and Malavieille, J.: A new experimental material for modeling relief dynamics and interactions between tectonics and surface processes, *Tectonophysics*, 513, 68–87, doi:10.1016/j.tecto.2011.09.029, 2011.
- Graveleau, F., Malavieille, J. and Dominguez, S.: Experimental modelling of orogenic wedges: A review, *Tectonophysics*, 538–540, 1–66, doi:10.1016/j.tecto.2012.01.027, 2012.
- Graveleau, F., Strak, V., Dominguez, S., Malavieille, J., Chatton, M., Manighetti, I. and Petit, C.: Experimental modelling of tectonics-erosion-sedimentation interactions in compressional, extensional, and strike-slip settings, *Geomorphology*, 244, 146–168, doi:10.1016/j.geomorph.2015.02.011, 2015.
- Guha, S. and Jain, V.: Role of inherent geological and climatic characteristics on landscape variability in the tectonically passive Western Ghat, India, *Geomorphology*, 350, 106840, doi:10.1016/j.geomorph.2019.106840, 2020.
- Guerit, L., Dominguez, S., Malavieille, J. and Castelltort, S.: Deformation of an experimental drainage network in oblique collision, *Tectonophysics*, 693, 210–222, doi:10.1016/j.tecto.2016.04.016, 2016.
- Hack, J. T.: *Studies of longitudinal stream profiles in Virginia and Maryland*, US Government Printing Office., 1957.
- Hasbargen, L. E. and Paola, C.: Landscape instability in an experimental drainage basin, *Geology*, 28(12), 1067–1070, doi:10.1130/0091-7613(2000)028<1067:LIIAED>2.3.CO;2, 2000.
- Hoth, S., Adam, J., Kukowski, N. and Oncken, O.: Influence of erosion on the kinematics of bivergent orogens: Results from

scaled sandbox simulations, *Special Paper of the Geological Society of America*, 398(303), 201–225, doi:10.1130/2006.2398(12), 2006.

Howard, A. D.: A detachment limited model of drainage basin evolution, *Water Resources Research*, 30(7), 2261–2285, doi:10.1029/94WR00757, 1994.

Howard, A. D., Dietrich, W. E. and Seidl, M. A.: Modeling fluvial erosion on regional to continental scale, *Journal of Geophysical Research*, 99(B7), 13971–13986, 1994.

Hubbert, M. K.: THEORY OF SCALE MODELS AS APPLIED TO THE STUDY OF GEOLOGIC STRUCTURES, *Geological Society of America Bulletin*, 48(10), 1459–1520, 1937.

Jamieson, R. A., Beaumont, C., Medvedev, S. and Nguyen, M. H.: Crustal channel flows: 2. Numerical models with implications for metamorphism in the Himalayan-Tibetan orogen, *Journal of Geophysical Research: Solid Earth*, 109(6), 1–24, doi:10.1029/2003JB002811, 2004.

Kirby, E. and Whipple, K. X.: Quantifying differential rock-uplift rates via stream profile analysis, *Geology*, 29(5), 415–418, doi:10.1130/0091-7613(2001)029<0415:QDRURV>2.0.CO;2, 2001.

Kirby, E. and Whipple, K. X.: Expression of active tectonics in erosional landscapes, *Journal of Structural Geology*, 44, 54–75, doi:10.1016/j.jsg.2012.07.009, 2012.

Konstantinovskaya, E. and Malavieille, J.: Thrust wedges with décollement levels and syntectonic erosion: A view from analog models, *Tectonophysics*, 502(3–4), 336–350, doi:10.1016/j.tecto.2011.01.020, 2011.

Kozeny, J.: Ueber kapillare leitung des wassers im boden [Capillary flow of water in the soil], *Sitzungsberichte der Akademie der Wissenschaften in Wien*, 136, 271–306, 1927.

Krantz, R. W.: Measurements of friction coefficients and cohesion for faulting and fault reactivation in laboratory models using sand and sand mixtures, *Tectonophysics*, 188(1–2), 203–207, doi:10.1016/0040-1951(91)90323-K, 1991.

Lague, D., Crave, A. and Davy, P.: Laboratory experiments simulating the geomorphic response to tectonic uplift, *Journal of Geophysical Research: Solid Earth*, 108(B1), ETG 3-1-ETG 3-20, doi:10.1029/2002JB001785, 2003.

Lallemand, S. E., Schnurle, P. and Malavieille, J.: Coulomb theory applied to accretionary and nonaccretionary wedges: Possible causes for tectonic erosion and/or frontal accretion, *Journal of Geophysical Research*, 99(B6), 12033–12055, 1994.

Lohrmann, J., Kukowski, N., Adam, J. and Oncken, O.: The impact of analogue material properties on the geometry, kinematics, and dynamics of convergent sand wedges, *Journal of Structural Geology*, 25, 1691–1711, doi:10.1016/S0191-8141(03)00005-1, 2003.

Malavieille, J., Larroque, C. and Calassou, S.: Modélisation expérimentale des relations tectonique/sédimentation entre bassin avant-arc et prisme d'accrétion, *Comptes Rendus de l'Académie des Sciences, Paris*, 1131–1137, 1993.

Mandal, S. K., Burg, J. P. and Haghpor, N.: Geomorphic fluvial markers reveal transient landscape evolution in tectonically quiescent southern Peninsular India, *Geological Journal*, 52(4), 681–702, doi:10.1002/gj.2833, 2017.

Massong, T. M. and Montgomery, D. R.: of Bedrock and Alluvial Channels, *America*, (5), 591–599, doi:10.1130/0016-7606(2000)112<591, 2000.

Montanari, D., Agostini, A., Bonini, M., Corti, G. and Del Ventisette, C.: The use of empirical methods for testing granular materials in analogue modelling, *Materials*, 10(6), 1–18, doi:10.3390/ma10060635, 2017.

Mulugeta, G. and Koyi, H.: Three-dimensional geometry and kinematics of experimental piggyback thrusting, *Geology*, 15(11), 1052–1056, doi:10.1130/0091-7613(1987)15<1052:TGAKOE>2.0.CO;2, 1987.

Ouchi, S.: Effects of uplift on the development of experimental erosion landform generated by artificial rainfall, *Geomorphology*, 127(1–2), 88–98, doi:10.1016/j.geomorph.2010.12.009, 2011.

Panien, M., Schreurs, G. and Pfiffner, A.: Mechanical behaviour of granular materials used in analogue modelling: insights from grain characterisation, ring-shear tests and analogue experiments, *Journal of Structural Geology*, 28(9), 1710–1724, doi:10.1016/j.jsg.2006.05.004, 2006.

- Paola, C., Straub, K., Mohrig, D. and Reinhardt, L.: The “unreasonable effectiveness” of stratigraphic and geomorphic experiments, *Earth-Science Reviews*, 97(1–4), 1–43, doi:10.1016/j.earscirev.2009.05.003, 2009.
- Pederson, J. L. and Tressler, C.: Colorado River long-profile metrics, knickzones and their meaning, *Earth and Planetary Science Letters*, 345–348, 171–179, doi:10.1016/j.epsl.2012.06.047, 2012.
- Persson, K. S., Garcia-Castellanos, D. and Sokoutis, D.: River transport effects on compressional belts: First results from an integrated analogue-numerical model, *Journal of Geophysical Research: Solid Earth*, 109(B1), 1–11, doi:10.1029/2002JB002274, 2004.
- Ramberg, H.: Gravity, deformation and the earth’s crust: in theory, experiments and geological application, Academic press., 1981.
- Reber, J. E., Cooke, M. L. and Dooley, T. P.: What model material to use? A Review on rock analogs for structural geology and tectonics, *Earth-Science Reviews*, 103107, 2020.
- Rigon, R., Rodriguez-Iturbe, I., Maritan, A., Giacometti, A., Tarboton, D. G. and Rinaldo, A.: On Hack’s law, *Water Resources Research*, 32(11), 3367–3374, 1996.
- Ritter, M. C., Santimano, T., Rosenau, M., Leever, K. and Oncken, O.: Sandbox rheometry: Co-evolution of stress and strain in Riedel– and Critical Wedge–experiments, *Tectonophysics*, 722(May 2017), 400–409, doi:10.1016/j.tecto.2017.11.018, 2018.
- Rossi, D. and Storti, F.: New artificial granular materials for analogue laboratory experiments: Aluminium and siliceous microspheres, *Journal of Structural Geology*, 25(11), 1893–1899, doi:10.1016/S0191-8141(03)00041-5, 2003.
- Schellart, W. P.: Shear test results for cohesion and friction coefficients for different granular materials: Scaling implications for their usage in analogue modelling, *Tectonophysics*, 324(1–2), 1–16, doi:10.1016/S0040-1951(00)00111-6, 2000.
- Schreurs, G., Hänni, R. and Vock, P.: Four-dimensional analysis of analog models: Experiments on transfer zones in fold and thrust belts, *Memoir of the Geological Society of America*, 193, 179–190, doi:10.1130/0-8137-1193-2.179, 2001.
- Schreurs, G., Buitter, S. J. H., Boutelier, D., Corti, G., Costa, E., Cruden, A. R., Daniel, J.-M., Hoth, S., Koyi, H. A., Kukowski, N., Lohrmann, J., Ravaglia, A., Schlische, R. W., Withjack, M. O., Yamada, Y., CavoZZi, C., Del Ventisette, C., Brady, J. A. E., Hoffmann-Rothe, A., Mengus, J.-M., Montanari, D. and Nilforoushan, F.: Analogue benchmarks of shortening and extension experiments, *Geological Society, London, Special Publications*, 253(1), 1–27, doi:10.1144/GSL.SP.2006.253.01.01, 2006.
- Schreurs, G., Buitter, S. J. H., Boutelier, J., Burberry, C., Callot, J. P., CavoZZi, C., Cerca, M., Chen, J. H., Cristallini, E., Cruden, A. R., Cruz, L., Daniel, J. M., Da Poian, G., Garcia, V. H., Gomes, C. J. S., Grall, C., Guillot, Y., Guzmán, C., Hidayah, T. N., Hilley, G., Klinkmüller, M., Koyi, H. A., Lu, C. Y., Maillot, B., Meriaux, C., Nilfouroushan, F., Pan, C. C., Pillot, D., Portillo, R., Rosenau, M., Schellart, W. P., Schlische, R. W., Take, A., Vendeville, B., Vergnaud, M., Vettori, M., Wang, S. H., Withjack, M. O., Yagupsky, D. and Yamada, Y.: Benchmarking analogue models of brittle thrust wedges, *Journal of Structural Geology*, 92, 116–139, doi:10.1016/j.jsg.2016.03.005, 2016.
- Schumm, S. A. and Parker, R. S.: Implications of Complex Response of Drainage Systems for Quaternary Alluvial Stratigraphy, *Nature Publishing Group*, 243, 99–100, doi:10.1038/246421a0, 1973.
- Schumm, S. A. and Rea, D. K.: Sediment yields from disturbed earth systems, *Geology*, 23(5), 391–394, doi:10.1130/0091-7613(1995)023<0391:syfdes>2.3.co;2, 1995.
- Schwanghart, W. and Scherler, D.: Short Communication: TopoToolbox 2 - MATLAB-based software for topographic analysis and modeling in Earth surface sciences, *Earth Surface Dynamics*, 2(1), 1–7, doi:10.5194/esurf-2-1-2014, 2014.
- Sembroni, A., Molin, P., Pazzaglia, F. J., Faccenna, C. and Abebe, B.: Evolution of continental-scale drainage in response to mantle dynamics and surface processes: An example from the Ethiopian Highlands, *Geomorphology*, 261, 12–29, doi:10.1016/j.geomorph.2016.02.022, 2016.
- Singh, A., Reinhardt, L. and Fofoula-Georgiou, E.: Landscape reorganization under changing climatic forcing: Results from an experimental landscape, *Water Resources Research*, 2498–2514, doi:10.1002/2015WR017200.A, 2015.
- Storti, F. and McClay, K.: Influence of syntectonic sedimentation on thrust wedges in analogue models, *Geology*, 23(11), 999–

- 1002, doi:10.1130/0091-7613(1995)023<0999:IOSSOT>2.3.CO;2, 1995.
- Storti, F., Salvini, F. and McClay, K.: Synchronous and velocity-partitioned thrusting and thrust polarity reversal in experimentally produced, doubly-vergent thrust wedges: Implications for natural orogens, *Tectonics*, 19(2), 378–396, doi:10.1029/1998TC001079, 2000.
- Strak, V., Dominguez, S., Petit, C., Meyer, B. and Loget, N.: Interaction between normal fault slip and erosion on relief evolution: Insights from experimental modelling, *Tectonophysics*, 513(1–4), 1–19, doi:10.1016/j.tecto.2011.10.005, 2011.
- Tarboton, D. G., Bras, R. L. and Rodriguez-Iturbe, I.: On the extraction of channel networks from digital elevation data, *Hydrological Processes*, 5(1), 81–100, doi:10.1002/hyp.3360050107, 1991.
- Tejedor, A., Singh, A., Zaliapin, I., Densmore, A. L. and Fofoula-Georgiou, E.: Scale-dependent erosional patterns in steady-state and transient-state landscapes, *Science Advances*, 3(9), 1–8, doi:10.1126/sciadv.1701683, 2017.
- Tucker, G. E. and Slingerland, R.: Drainage basin responses to climate change, *Water Resources Research*, 33(8), 2031–2047, doi:10.1029/97WR00409, 1997.
- Tucker, G. E. and Whipple, K. X.: Topographic outcomes predicted by stream erosion models: Sensitivity analysis and intermodel comparison, *Journal of Geophysical Research: Solid Earth*, 107(B9), ETG 1-1-ETG 1-16, doi:10.1029/2001JB000162, 2002.
- Ueda, K., Willett, S. D., Gerya, T. and Ruh, J.: Geomorphological-thermo-mechanical modeling: Application to orogenic wedge dynamics, *Tectonophysics*, 659, 12–30, doi:10.1016/j.tecto.2015.08.001, 2015.
- Vanacker, V., von Blanckenburg, F., Govers, G., Molina, A., Campforts, B. and Kubik, P. W.: Transient river response, captured by channel steepness and its concavity, *Geomorphology*, 228, 234–243, doi:10.1016/j.geomorph.2014.09.013, 2015.
- Viaplana-Muzas, M., Babault, J., Dominguez, S., Van Den Driessche, J. and Legrand, X.: Drainage network evolution and patterns of sedimentation in an experimental wedge, *Tectonophysics*, 664, 109–124, doi:10.1016/j.tecto.2015.09.007, 2015.
- Viaplana-Muzas, M., Babault, J., Dominguez, S., Van Den Driessche, J. and Legrand, X.: Modelling of drainage dynamics influence on sediment routing system in a fold-and-thrust belt, *Basin Research*, 31(2), 290–310, doi:10.1111/bre.12321, 2019.
- Whipple, K. X. and Meade, B. J.: Controls on the strength of coupling among climate, erosion, and deformation in two-sided, frictional orogenic wedges at steady state, *Journal of Geophysical Research: Earth Surface*, 109(F1), 1–24, doi:10.1029/2003JF000019, 2004.
- Whipple, K. X. and Tucker, G. E.: Dynamics of the stream-power river incision model: Implications for height limits of mountain ranges, landscape response timescales, and research needs, *Journal of Geophysical Research*, 104(B8), 17661–17674, 1999.
- Whipple, K. X. and Tucker, G. E.: Implications of sediment-flux-dependent river incision models for landscape evolution, *Journal of Geophysical Research*, 107(B2), 2039, doi:10.1029/2000JB000044, 2002.
- Whipple, K. X., Kirby, E. and Brocklehurst, S. H.: Geomorphic limits to climate-induced increases in topographic relief, *Nature*, 401(6748), 39–43, doi:10.1038/43375, 1999.
- Willett, S. D.: Orogeny and orography: The effects of erosion on the structure of mountain belts, *Journal of Geophysical Research: Solid Earth*, 104(B12), 28957–28981, doi:10.1029/1999JB900248, 1999.
- Willett, S. D., Beaumont, C. and Fullsack, P.: Mechanical Model for doubly vergent compressional orogens, *Geology*, 21(4), 371–374, doi:10.1130/0091-7613(1993)021<0371:MMFTTO>2.3.CO;2, 1993.

<i>Experiment</i>	<i>Analogue material/mix</i>	<i>Applicability for landscape evolution analogue models</i>
<i>SM1</i>	100 wt.% SP	Yes, without deformation applied

CM1	40 wt.% CQ	No
	40 wt.% GM	
	20 wt.% PVC	
CM2	40 wt.% SP	Yes
	40 wt.% GM	
	20 wt.% PVC	
CM3	50 wt.% SP	Yes
	35 wt.% GM	
	15 wt.% PVC	
CM4	60 wt.% SP	No
	30 wt.% GM	
	10 wt.% PVC	
CM5	70 wt.% SP	No
	25 wt.% GM	
	5 wt.% PVC	

Table 1: Material used in experiments. The label CM indicates a composite material, while the label SM indicates a pure single material.

Material	D_{50} , μm	$\frac{\rho_{part} \pm}{1 \text{ kg m}^{-3}}$	$\gamma \pm$ 0.01	$k \pm 0.1 \cdot 10^n$ m s^{-1}	$\frac{k}{\text{m}^2}$	ϕ_{wet}^p (degrees)	C_{wet} (kPa)	ϕ_{wet}^s (degrees)	Sphericity	Roundness
Silica powder (SP)	20	2660	0.36	3.5 \cdot 10^{-7}	3.6 \cdot 10^{-14}	34-40	0-8.5	33-39	Low	Very angular
Crushed quartz (CQ)	87	2590	0.37	2.3 \cdot 10^{-5}	2.3 \cdot 10^{-12}	30-33	4.5-6.6	31-32	Medium	Angular
Glass microbeads (GM)	98	2450	0.26	2.8 \cdot 10^{-5}	2.9 \cdot 10^{-12}	23-25	/	14-22	Very high	Well rounded
PVC powder (PVC)	181	1400	0.30	1.0 \cdot 10^{-5}	1.1 \cdot 10^{-12}	25-32	/	18-21	High	Rounded
CM1	/	2170	0.42	7.2 \cdot 10^{-6}	7.4 \cdot 10^{-13}	25-40	0-8.9	23-35	/	/
CM2	/	2190	0.32	2.8 \cdot 10^{-6}	2.9 \cdot 10^{-13}	25-36	1-9.8	23-34	/	/
CM3	/	2290	0.29	9.0 \cdot 10^{-7}	9.3 \cdot 10^{-14}	27-40	0-6.5	26-36	/	/
CM4	/	2390	0.30	2.6 \cdot 10^{-6}	2.6 \cdot 10^{-13}	22-37	0-11.9	22-36	/	/
CM5	/	2500	0.31	4.0 \cdot 10^{-6}	4.1 \cdot 10^{-13}	22-36	2.9-14	21-35	/	/

Table 2: Geometrical and physical properties of pure granular materials and mixes. Here we show values for grain size (D_{50}), [particle density](#) (ρ_{part}), porosity (γ), permeability (k), cohesion (C) and internal friction angle for peak (ϕ_{wet}^p) and stable (ϕ_{wet}^s) friction. Sphericity and roughness have been estimated after the acquisition of SEM imaging. The subscripts dry and wet indicate whatever the tests were made with dry materials or water-saturated materials.

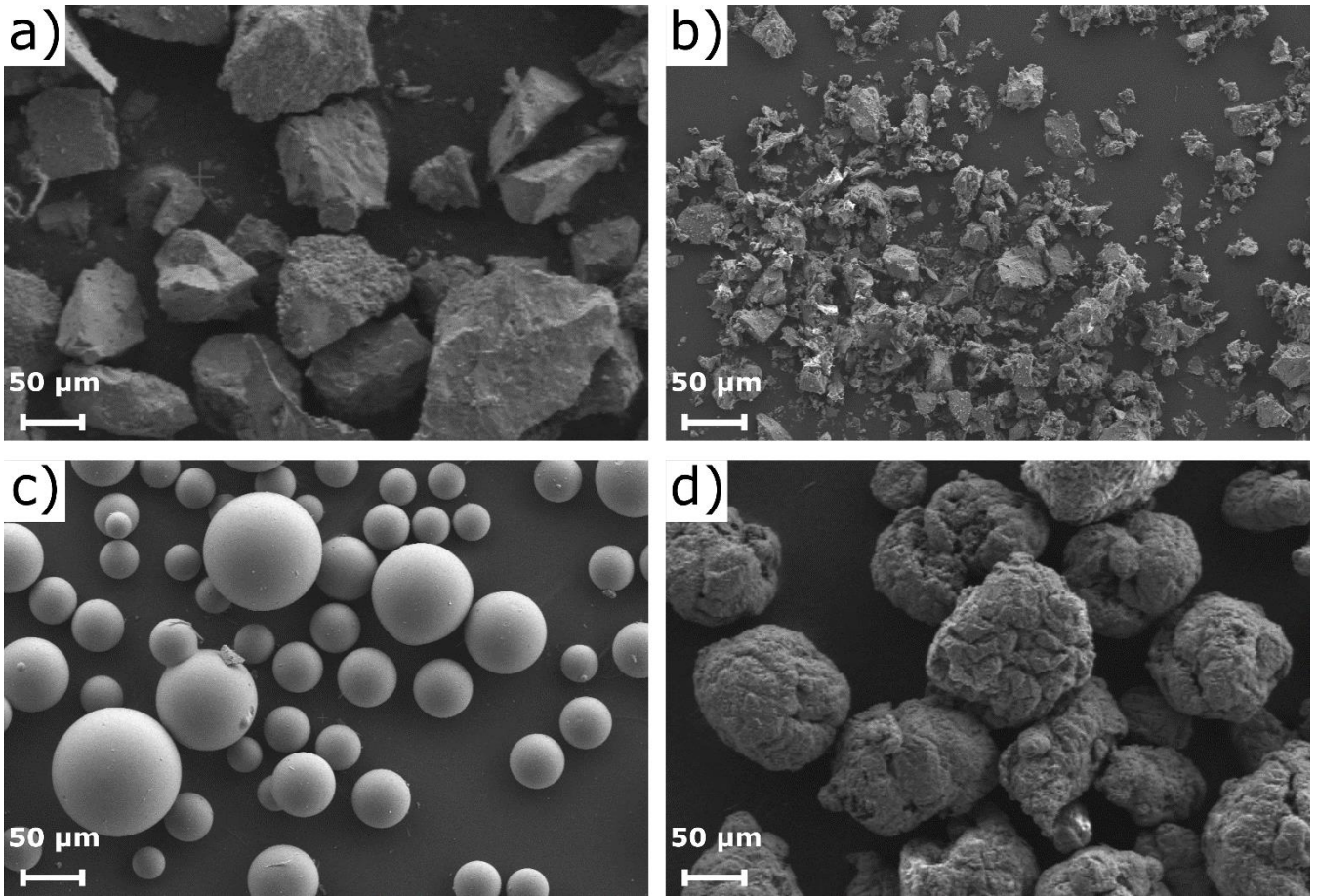


Figure 1: SEM (Scanning Electron Micrograph) pictures of the materials tested in this work. (a) crushed quartz, (b) silica powder, (c) glass microbeads, (d) PVC powder.

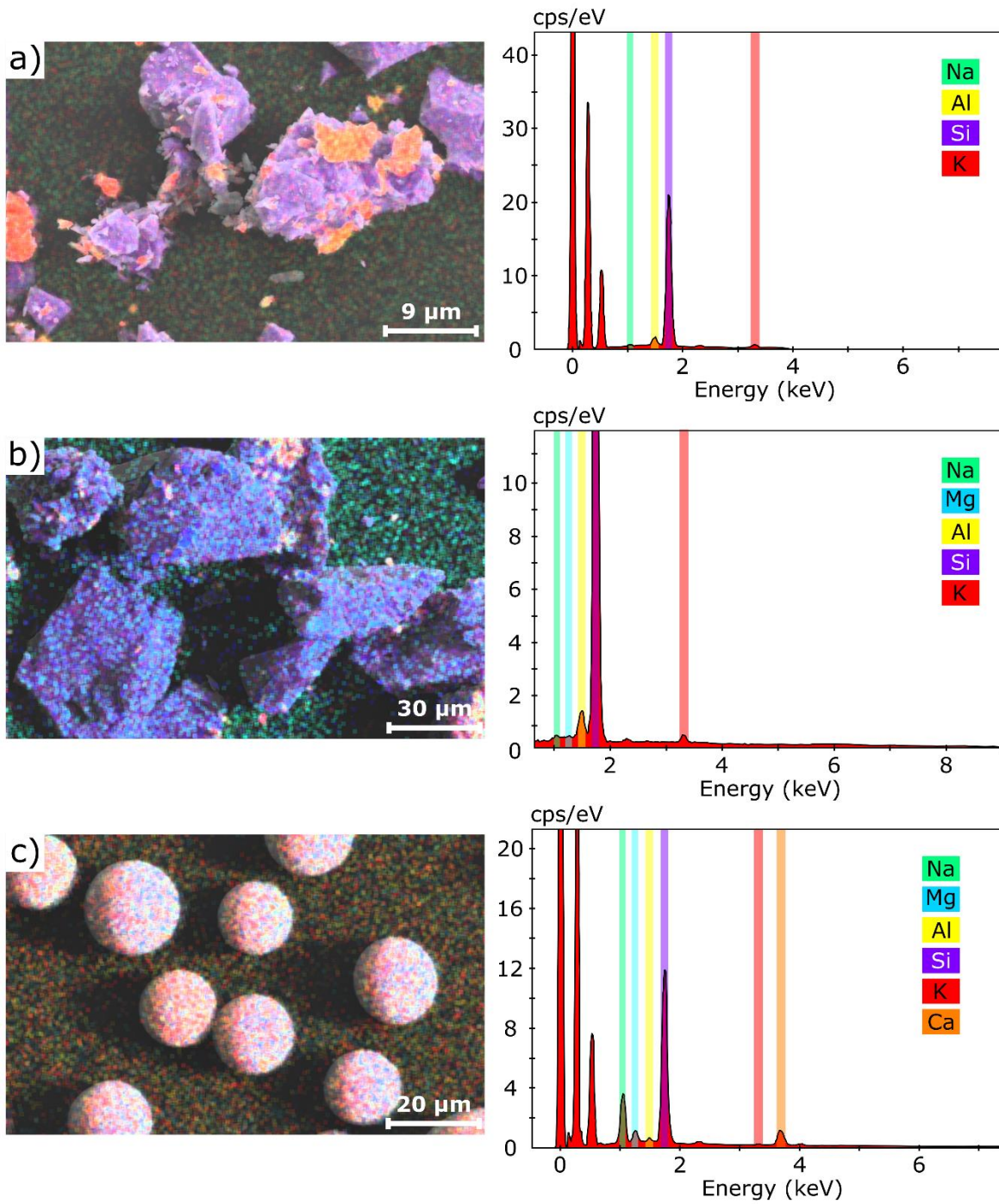


Figure 2: SEM qualitative analysis of the material composition. On the left is the BackScattered-Electron (BSE) imaging, while on the right the Energy-Dispersive Detector (EDS) spectrum. A qualitative composition is presented for a) silica powder, b) crushed quartz and c) glass microbeads. PVC powder has not been analyzed, due to its complex composition.

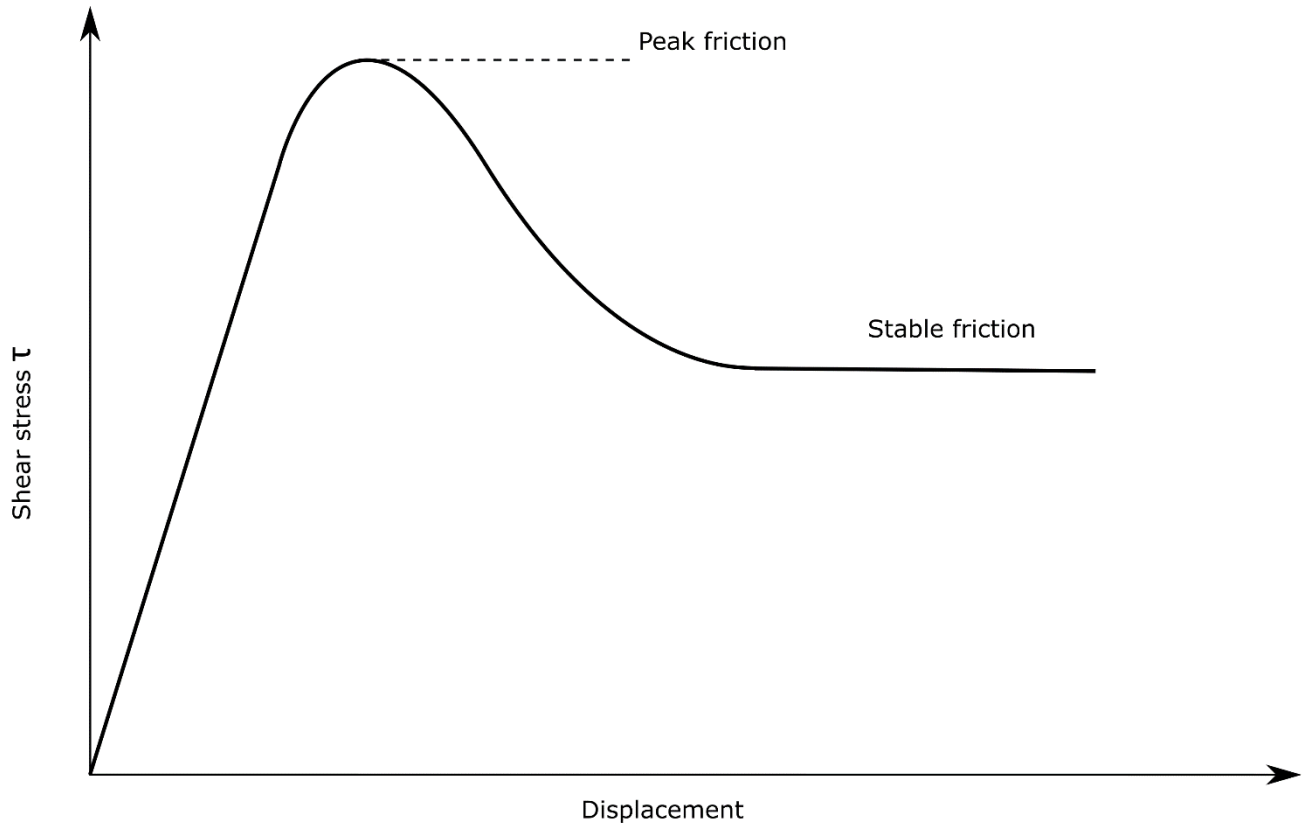


Figure 3: Ideal output from a shear test. The peak friction corresponds to the high point of the curve, while stable friction is defined by the subsequent plateau.

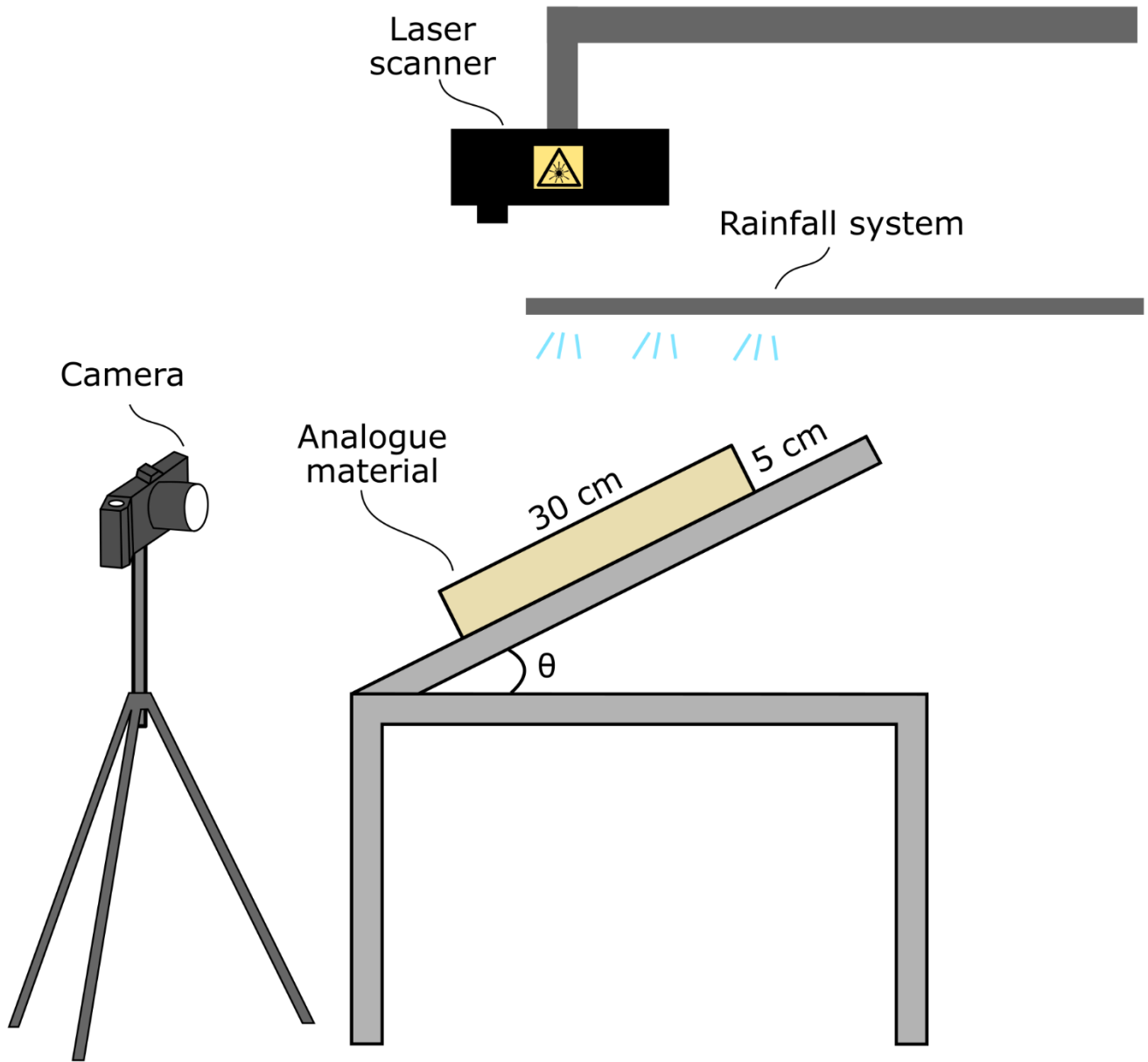


Figure 4: Schematic representation of the experimental setup used for models with only erosion: block of experimental material ($35 \times 30 \times 5 \text{ cm}^3$), rainfall system (commercial sprinklers) and reclining table. A single camera and a high-definition laser scan provide records for the experiments.

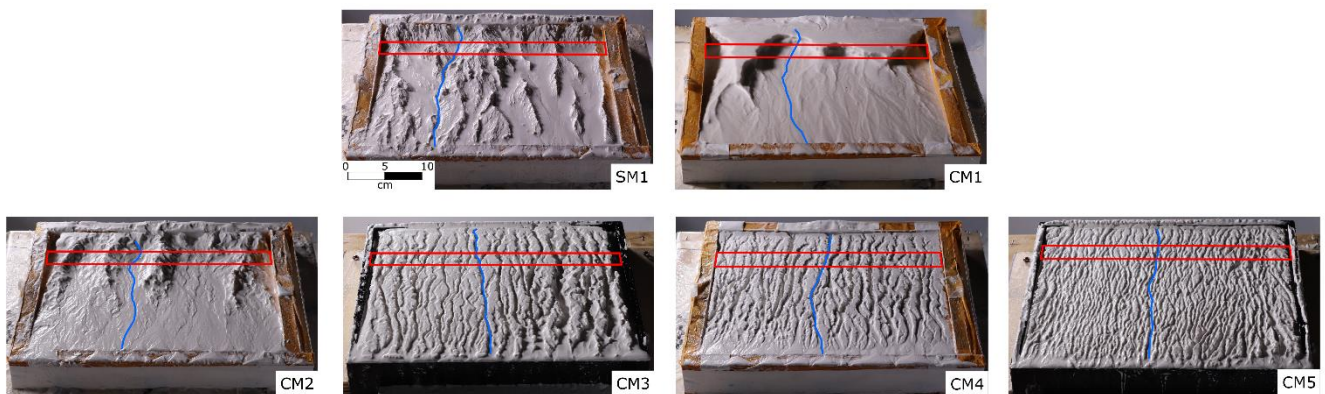


Figure 5: Pictures of the models at 200 min from the beginning of the experiment. The red box is the trace of the swath profiles shown in Fig. 6. The blue line indicates the stream, for every experiment, analyzed in Fig. 7.

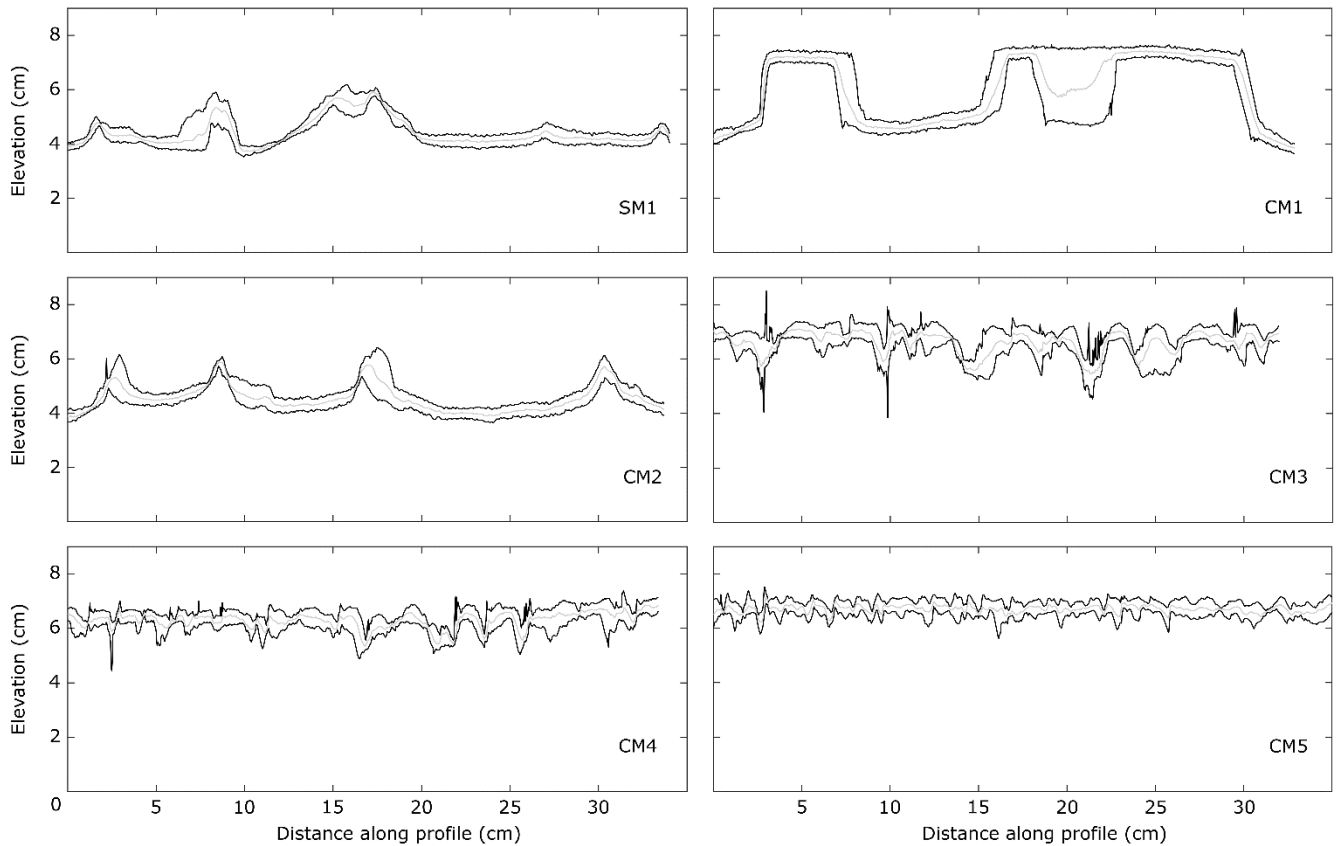


Figure 6: Swath profiles, transverse to the experiment slope. Profiles are plotted at the same experimental time, at which the system keeps its morphologies almost constant through time (ca. 200 min). Location as shown in Fig. 5.

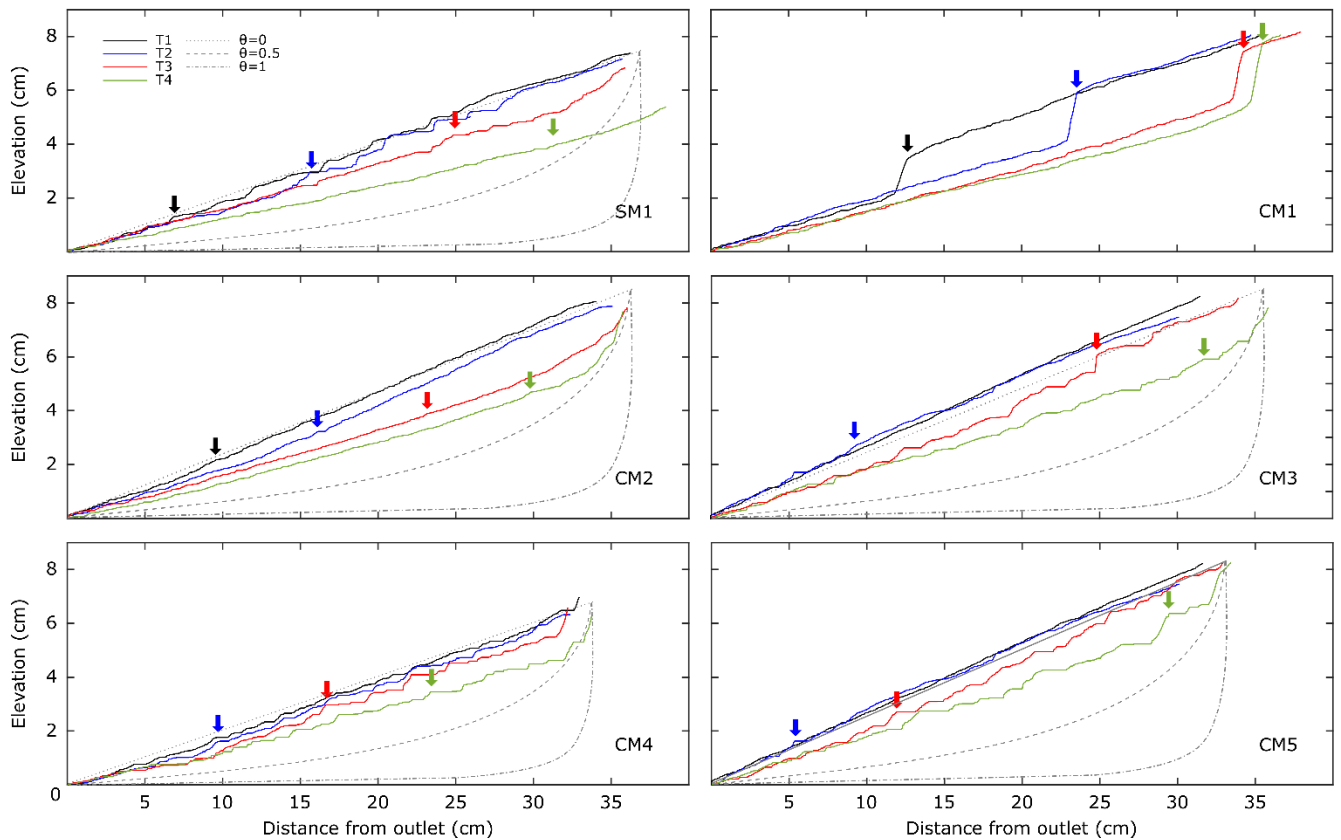


Figure 7: Longitudinal profiles of the streams highlighted in Fig. 5. This analysis is performed converting the laser scan into DEM and applying the TopoToolbox tool for MATLAB (Schwanghart and Scherler, 2014). The laser horizontal and vertical resolution are 0.05 and 0.07 mm respectively. We show four profiles corresponding to four consecutive time steps (T1 = 20 min, T2 = 60 min, T3 = 150 min, T4 = 350 min). [The vertical arrows point to the main knickpoints for the relative time step \(color coding\).](#) [In the figure are also plotted the theoretical river profiles for concavity index of 0, 0.5 and 1.](#) [We did not plot the theoretical profile for CM1 because no proper channel develops \(see text for details\).](#)

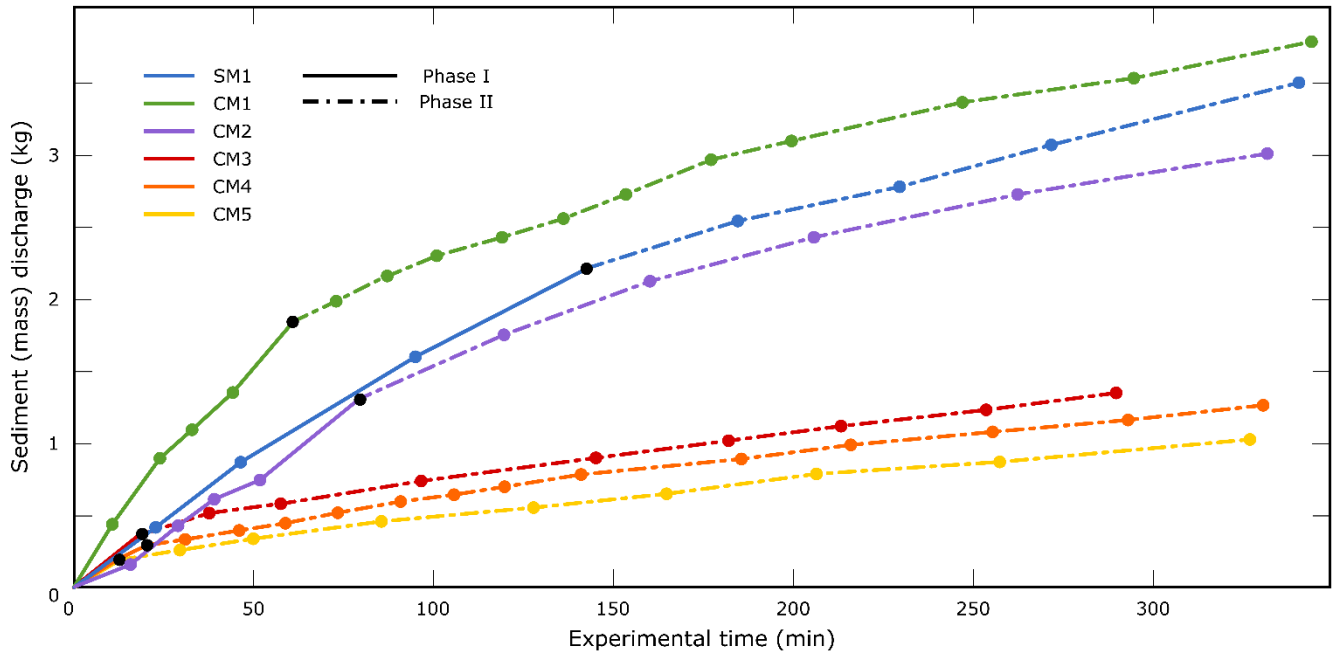


Figure 8: Cumulative mass (sediment) discharge over time for the six experiments. The solid lines correspond to phase I, while dashed lines to phase II. The black dot highlights the transition from phase I to phase II.

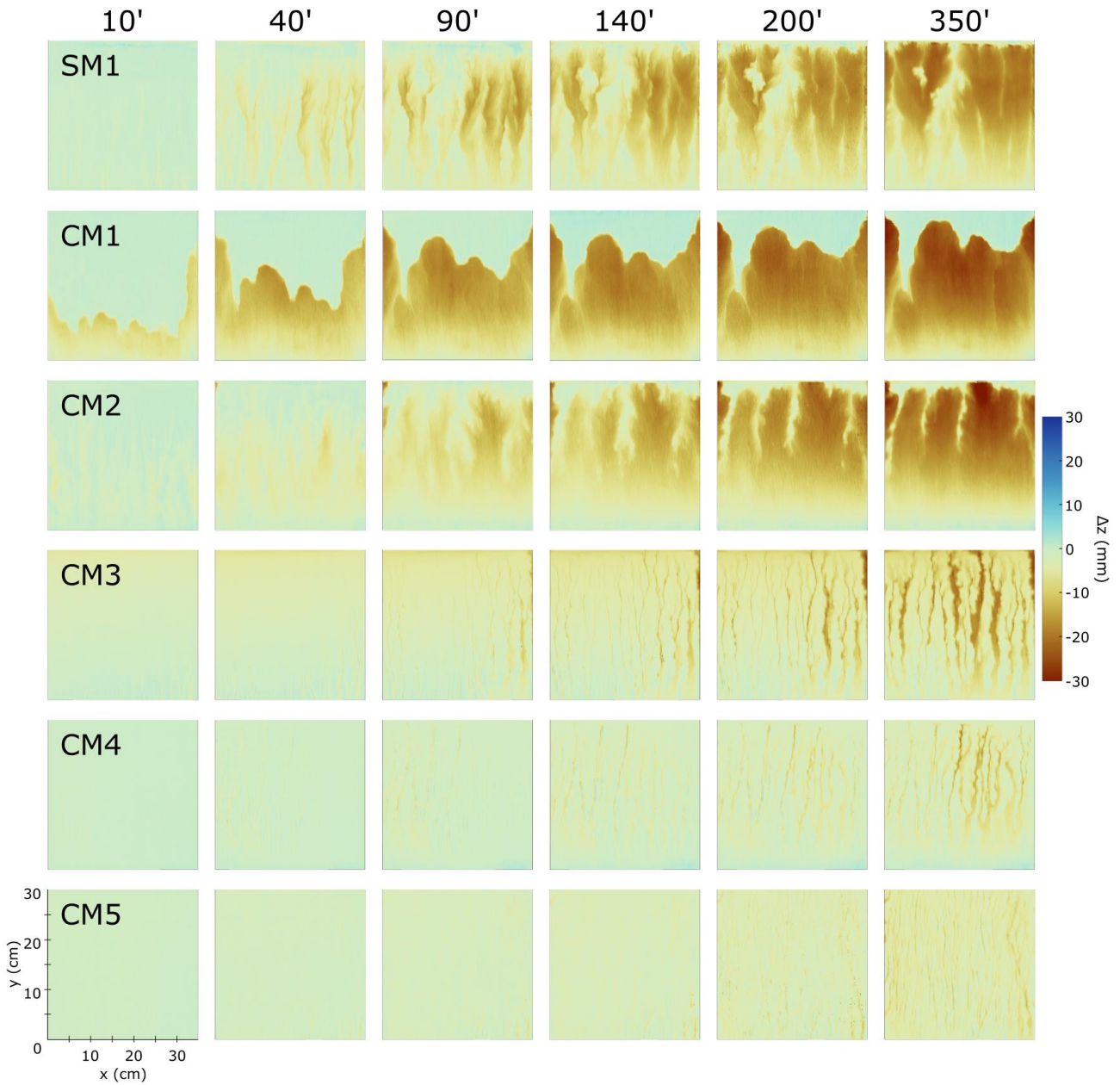


Figure 9: Erosion evolution for the experiments, here represented by the cumulative difference in elevation (Δz) of the same point at consecutive times. Time is indicated in columns. Each row corresponds to a model, where the mix adopted is indicated in the first panel of each row. The color coding is shown by the color bar on the right. Negative values correspond to erosion, positive ones to sedimentation (almost no sedimentation for these models).

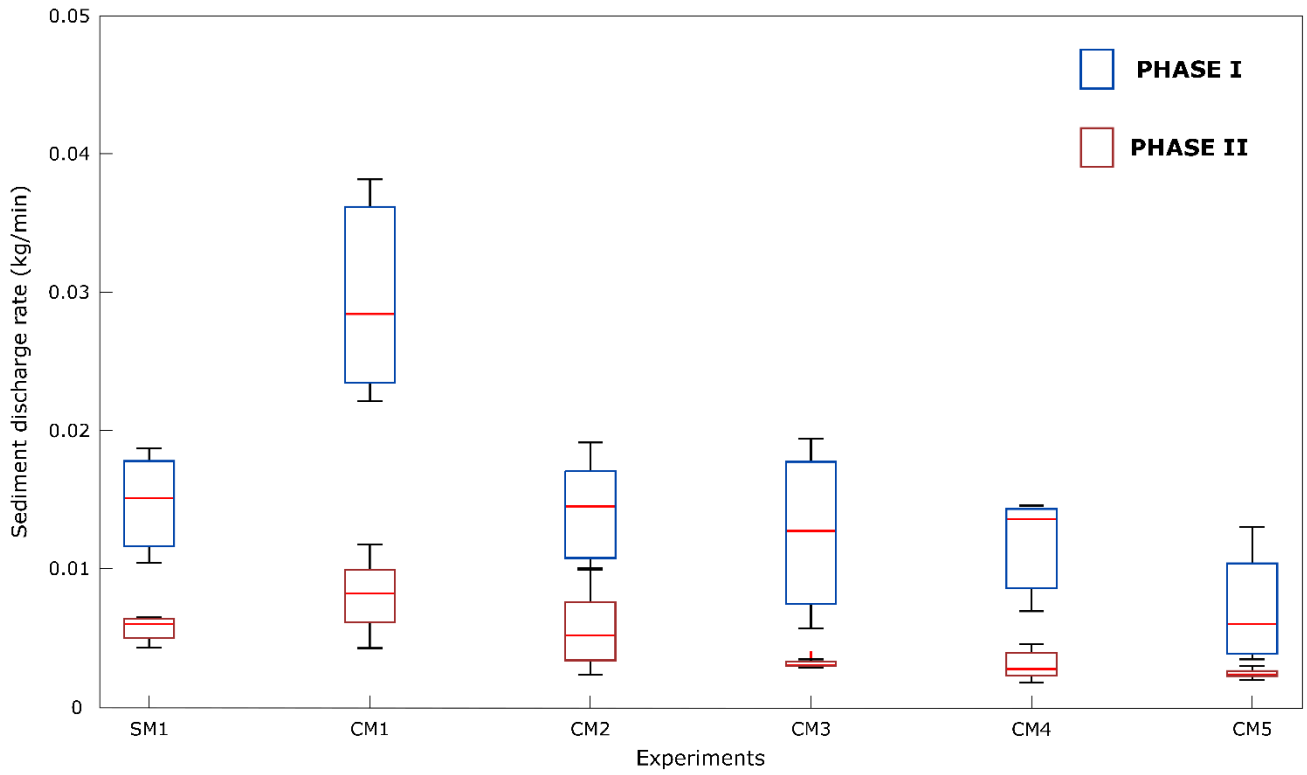


Figure 10: Box plot of sediment discharge rate for phase I and phase II. The red lines indicate the median, and the bottom and top edges of the blue box indicate the 25th and 75th percentiles, respectively. The black markers outside the box cover the data point at < 25th and > 75th percentile that are not considered outliers.

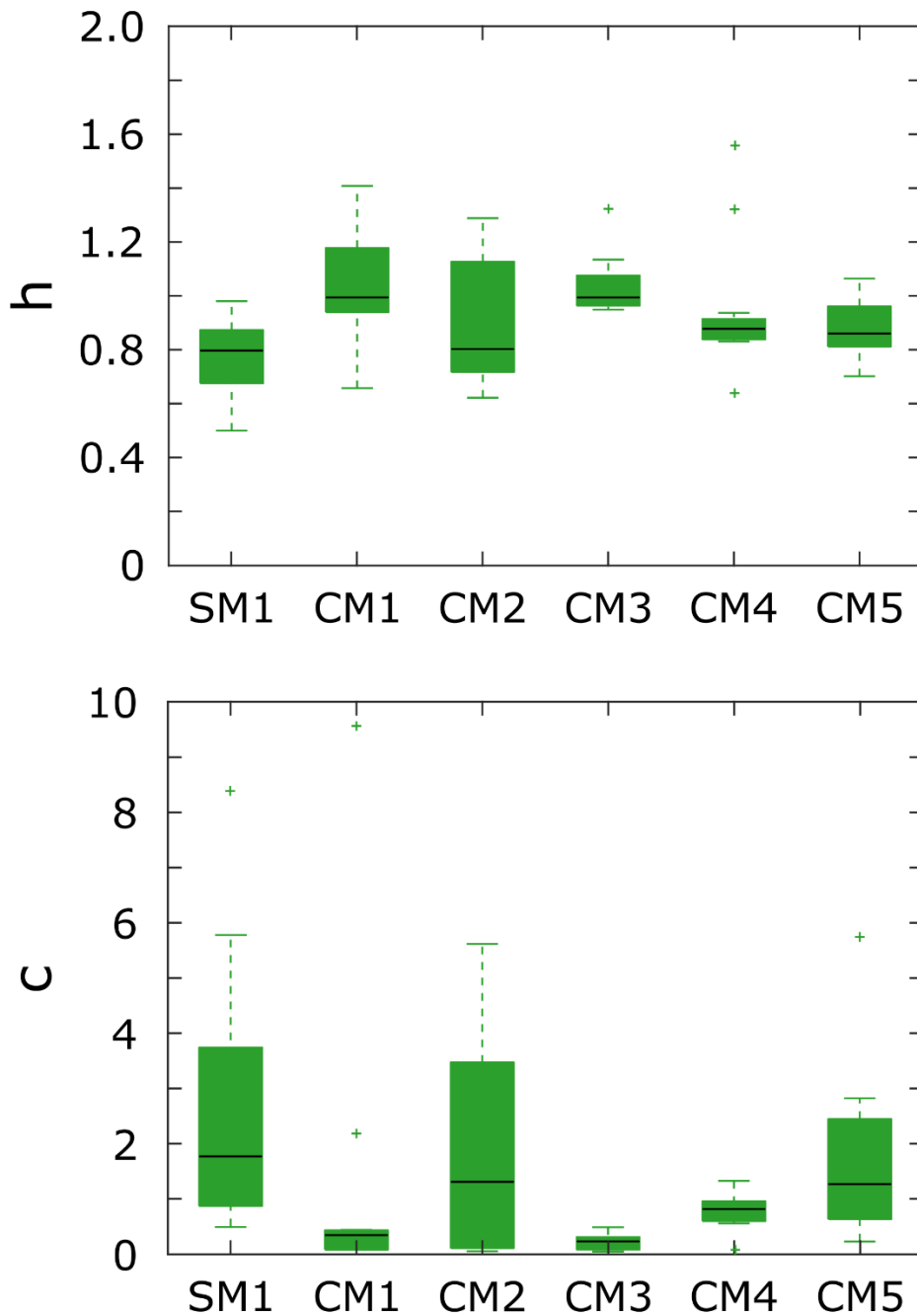


Figure 11: Values distribution for h and c for Hack's Law, as given in Eq. (13), in the models. The black lines indicate the median, while the bottom and top edges of the green box indicate the 25th and 75th percentiles, respectively. The green whiskers outside the box cover the data point at < 25th and > 75th percentile that are not considered outliers, here indicated by green crosses.

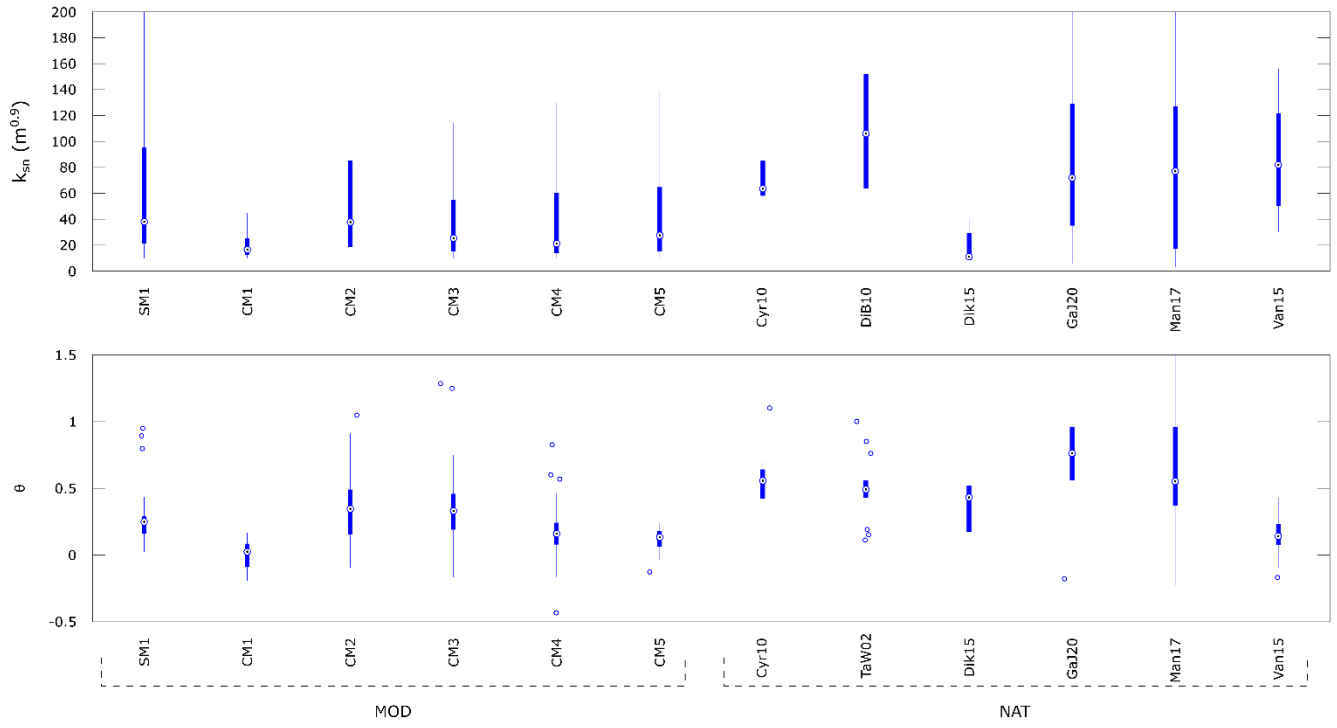


Figure 12: Steepness (k_{sn}) and concavity index (θ) in the experiments and in nature (field data). We use $\theta_{ref} = 0.45$ for computing k_{sn} . The black dots indicate the median, while the bottom and top edges of the blue box indicate the 25th and 75th percentiles, respectively. The thin blue lines cover data <25th and >75th percentiles that are not considered outliers, and the outliers are indicated by the blue empty dots. [Cyr10 = Cyr et al., 2010](#); [DiB10 = DiBiase et al., 2010](#); [TaW02 = Tucker and Whipple, 2002](#); [Dik15 = Dikshit, 2015](#); [GaJ20 = Guha and Jain, 2020](#); [Man17 = Mandal et al., 2017](#); [Van15 = Vanacker et al., 2015](#).