

# Evaluating OSL rock surface exposure dating as a novel approach for reconstructing coastal boulder movement on decadal to centennial timescales

5 Dominik Brill<sup>1\*</sup>, Simon Matthias May<sup>1</sup>, Nadia Mhammdi<sup>2</sup>, Georgina King<sup>3</sup>, Benjamin Lehmann<sup>4</sup>, Christoph Burow<sup>1</sup>, Dennis Wolf<sup>1</sup>, Anja Zander<sup>1</sup>, Helmut Brückner<sup>1</sup>

<sup>1</sup> Institute of Geography, University of Cologne, Köln, Germany

<sup>2</sup> Institut Scientifique, Laboratory LGRN and GEOPAC Research Center, Université Mohammed V, Rabat, Rabat, Morocco

<sup>3</sup> Institute for Geology, University of Lausanne, Switzerland

10 <sup>4</sup> Centro de Estudios Avanzados en Zonas Áridas (CEAZA), ULS-Campus Andrés Bello, Raúl Britán 1305, La Serena, Chile

*Correspondence to:* Dominik Brill (brilld@uni-koeln.de)

**Abstract.** Wave-transported boulders represent important records of storm and tsunami impact over geological timescales. Their use for hazard assessment requires chronological information on their displacement that in many cases cannot be achieved by established dating approaches. To fill this gap, this study investigated, for the first time, the potential of optically stimulated luminescence rock surface exposure dating (OSL-RSED) for estimating cliff-detachment ages of wave-driven coastal boulders. The approach was tested on calcarenite clasts at the Rabat coast, Morocco. Calibration of the OSL-RSED model was based on samples with rock surfaces exposed to sunlight for ~2 years, and OSL exposure ages were evaluated against age control deduced from satellite images. Our results show that the dating precision is limited for all targeted boulders due to the local source rock lithology which has low amounts of quartz and feldspar. The dating accuracy may be affected by erosion rates on boulder surfaces of 0.02-0.18 mm/year. Nevertheless, we propose a robust relative chronology for boulders that are not affected by significant post-depositional erosion and that share surface angles of inclination with the calibration samples. The relative chronology indicates that (i) most boulders were detached from the cliff by storm waves; (ii) these storms lifted boulders with masses of up to ~24 t; and (iii) the role of storms for the formation of boulder deposits along the Rabat coast is more significant than previously assumed. Although OSL-RSED cannot provide reliable absolute exposure ages for the coastal boulders in this study, the approach has large potential for boulder deposits composed of rocks with larger amounts of quartz or feldspar and less susceptibility to erosion.

## 1. Introduction

30 Coastal boulders with masses of up to tens or hundreds of tons, located well above high tide level or far inland from the shoreline, are impressive evidence for the occurrence and impact of tsunamis and extreme storms (e.g. Engel and May, 2012; May et al., 2015; Cox et al., 2019). Such geological imprints may be preserved over periods that significantly exceed instrumental and historical records (Yu et al., 2009; Ramalho et al., 2015), making them valuable records for long-term hazard assessment. Compared to sandy tsunami and storm deposits, which are used more commonly for this purpose, wave-transported boulders are abundant along rocky coastlines and can be preserved over geological time scales even in settings dominated by erosion (Paris et al., 2011). Furthermore, boulders may provide information on the magnitude of prehistoric tsunamis and storms that cannot be deduced from sandy sediments (Nandasena et al., 2011).

40 For coastal boulders to be valuable for hazard assessment, they have to provide information on the frequency of  
the associated flooding events, which in turn requires chronological information on boulder displacement. Since  
boulders unlike sandy storm and tsunami deposits typically lack a stratigraphic context, dating approaches rely on  
chronometers related to the boulder rock itself or on constructive features attached to the boulder, such as marine  
organisms or flow stones. Established dating approaches are based on radiocarbon ( $^{14}\text{C}$ ) and U-series ( $^{230}\text{Th}/^{234}\text{U}$ )  
45 dating of organic carbonates (e.g. Zhao et al., 2009; Araoka et al., 2013), and thus require coral boulders or the  
presence of attached marine organisms, as well as coincidence between the death of these organisms and the  
onshore transport of the boulder. Direct ages for the transport of coastal boulders were achieved by using terrestrial  
cosmogenic nuclide surface exposure dating (Ramalho et al., 2015; Rixhon et al., 2017) and palaeomagnetic dating  
(Sato et al., 2014). However, palaeomagnetic dating still suffers from a number of intrinsic methodological  
50 limitations, and cosmogenic nuclide dating cannot provide sufficient resolution on Late Holocene time scales and  
is, therefore, of limited benefit for the vast majority of coastal boulders.

The recently developed optically stimulated luminescence (OSL) rock surface dating technique (see review by  
King et al., 2019) offers completely new opportunities for directly dating the cliff detachment of coastal boulders.  
While the application of the more routinely used OSL rock surface burial dating technique (e.g. Simms et al., 2011;  
Sohbati et al., 2015; Jenkins et al., 2018; Rades et al., 2018) is typically impeded for coastal boulders due to  
55 logistical problems with sampling the (inaccessible) light-shielded bottom surfaces of clasts weighing several tons,  
the OSL rock surface exposure dating (OSL-RSED) technique introduced by Sohbati et al. (2011) can be applied  
to the light-exposed top surfaces of such clasts. For boulders that were overturned during wave-driven cliff  
detachment and that experienced no subsequent overturning events as well as negligible erosion and shielding of  
their top surfaces after deposition on the onshore platform, post-transport exposure periods may be estimated based  
60 on the time-dependent progression of OSL signal resetting, the so-called bleaching front, into the uppermost  
millimetres to centimetres of the rock (Sohbati et al., 2012; Freiesleben et al., 2015; Lehmann et al., 2018; Gliganic  
et al., 2019). OSL-RSED is applicable to a wide spectrum of lithologies, as long as they contain quartz and/or  
feldspar, and to timescales of decades, centuries up to a few millennia. While it thus cannot be applied to pure  
limestone boulders, the approach may provide ages for coastal boulders that are so far not datable by any other  
65 technique.

Here, we present the first attempt to use OSL-RSED to reconstruct storm and/or tsunami frequency patterns from  
wave-displaced boulders. All analyses were conducted on carbonatic sandstone boulders from the Atlantic coast  
of Morocco, south of Rabat, that were previously documented by Mhammdi et al. (2008) and Medina et al. (2011).  
These boulders were selected, because they offer all indispensable prerequisites for the application of OSL-RSED,  
70 including a lithology containing sensitive quartz and feldspar (Barton et al., 2009), unambiguous signs of boulder  
overturning in their taphonomy, and age control at least for some of the boulders. Boulder sites with potentially  
more appropriate lithologies for OSL-RSED typically lack clear indication of boulder movement and age control,  
and coastal boulders with better independent chronologies are typically composed of pure limestone that cannot  
be used for OSL dating. Primarily, this study aims at evaluating the novel OSL-RSED technique for coastal  
75 boulders, which was achieved by using artificially exposed rock surfaces for calibration of the bleaching model  
and by testing its performance against age control deduced from satellite images and eyewitness accounts. The  
successfully validated model was then applied to boulders of unknown age. While some of the dated boulders had  
previously been tentatively attributed to the 1755 Lisbon Tsunami (Mhammdi et al., 2008; Medina et al., 2011),  
they lack robust chronological data. Besides discussing limitations of the dating approach due to local OSL signal

80 properties and erosion of boulder surfaces exposed after transportation, we also discuss the future potential of this method and the implications of the new relative OSL-RSED boulder ages for the long-term storm and tsunami hazard at the Atlantic coast of Morocco.

## 2. The OSL rock surface exposure dating model applied to coastal boulders

85 Conventional OSL dating relies on the accumulation of an energy dose (palaeodose) due to the impact of ionising radiation over time (dose rate) on sand or silt grains shielded from sunlight. The palaeodose is proportional to the burial age of the sediment and can be quantified by measuring the light emission (OSL signal) of quartz or feldspar grains during stimulation with laboratory light. In natural settings, resetting of OSL signals takes place by sunlight exposure during sediment transport, so that buried sediment grains can provide information about the time that passed since the last sunlight exposure (burial age).

90 The uppermost millimetres to centimetres of rock surfaces exposed to sunlight experience bleaching and accumulation of OSL signals at the same time. However, OSL signal resetting or bleaching is by far the dominant process in rocks with low environmental dose rates and Holocene exposure histories (Sohbati et al., 2012). For coastal boulders with dose rates of less than 1 Gy/ka and ages post-dating the stabilization of Holocene eustatic sea level around its present position about six millennia ago (e.g. Khan et al., 2015), as investigated in this study, 95 OSL signal accumulation can be neglected. The time-dependent evolution of OSL signals in exposed boulder surfaces can therefore be reduced to the term for OSL signal resetting, which following Sohbati et al. (2012) is expressed by

$$L(x) = L_0 e^{-\overline{\sigma\varphi_0} t_e e^{-\mu x}}, \quad (1)$$

100 where  $L_0$  is the initial OSL signal intensity prior to exposure,  $L$  the remaining OSL signal at depth  $x$  (mm) after exposure,  $t_e$  (s) the exposure time,  $\overline{\sigma\varphi_0}$  ( $s^{-1}$ ) the effective bleaching rate of the OSL signal at the rock surface (i.e. the product of the photo-ionisation cross section  $\sigma$ , and the light flux at the rock surface  $\varphi_0$ ), and  $\mu$  ( $mm^{-1}$ ) the light attenuation coefficient of the rock.

Figure 1 illustrates how Equation (1) can be used to estimate the timing of wave-driven boulder detachment from the coastal cliff, if this event was associated by overturning of the clast. When attached to the cliff, only the (usually 105 bio-eroded) upper surface of a typical boulder in the pre-transport position is exposed to sunlight and experiences OSL signal resetting (Fig. 1a). Its shielded bottom side is only exposed to ionising radiation from radioactive elements in the surrounding rock and cosmic rays that, after a prolonged time, cause OSL signals to be in or close to field saturation (Fig. 1a). When overturned during cliff detachment, the new upper surface of the boulder in post-transport position on the cliff platform is suddenly exposed to sunlight and the bleaching front starts to move 110 into the rock (Fig. 1b); boulders with a platy shape may be repeatedly pushed landwards by waves afterwards, while a second overturning is very unlikely. The same is true for the surfaces of quarrying niches that are formed by boulder detachment (Fig. 1b). In both cases, the exposure time can be estimated by fitting Equation (1) to the depth-dependent OSL signals measured in rock samples collected from these surfaces. The shielded bottom side of the boulder in the post-transport position is generally suitable for rock surface burial dating, by making use of 115 the time-dependent dose accumulation in the previously bleached surface; due to inaccessibility of shielded surfaces for sample collection this was not tried in this study.

### 3. Study area

#### 3.1 Marine flooding hazard along the Atlantic coast of Morocco

120 The approximately 3000 km-long Moroccan Atlantic coast is exposed to swell waves, north Atlantic winter storms  
and rare tsunamis that cause erosion and/or flooding of low-lying areas. The energy of swell waves is strongest  
along the central section of the Moroccan coast, between Agadir and Rabat, since it is not sheltered by the Canary  
Islands or the Iberian Peninsula; waves approach from the northwest to west and are significantly stronger during  
winter (Medina et al., 2011). The influence of Atlantic hurricanes is comparatively small (Fig. A1a) with only two  
former tropical storms recorded to have made landfall as tropical depressions (core pressure 988-1000 hPa) at the  
125 coast of Morocco and the southern Iberian Peninsula between 1851 and 2016 (Fig. 2a). Instead, maximum wave  
heights are associated with winter storms that typically cross France or the UK (Fig. A1b), but may have tracks as  
far south as Morocco (Fig. 2a). During recent winter storms within the last century, wave heights of up to 7 m  
(compared to regular swell heights of 0.5-1.5 m) have been observed at the Rabat coast (Mhammdi et al., 2020),  
associated with flooding of back-beach areas and waves overtopping the coastal cliff (Fig. A2).

130 An additional flooding hazard emanates from tsunamis triggered by earthquakes offshore of Portugal, between the  
Azores triple junction and the Strait of Gibraltar, where the African and Eurasian plates converge at a rate of ~4  
mm per year (Zitellini et al., 1999). After earthquakes in 1941, 1969 and 1975, Moroccan tide gauges recorded  
moderate tsunamis with waves <1 m. Further earthquakes, likely accompanied by tsunamis with impact in  
Morocco, are listed in historical catalogues (e.g. in 382 CE and 881 CE), but unambiguous reports of flooding only  
135 exist for the 1st November 1755 Lisbon Tsunami (Kaabouben et al., 2009). Triggered by a  $M_w$  8.5 earthquake,  
probably due to the rare event of a combined rupture of different seismic structures (Baptista et al., 2003), the  
associated tsunami is the only known destructive flooding event at the Moroccan coast. Historical sources from  
Rabat describe the inundation of streets as far as 2 km inland, wreckage of ships in the harbour, and drowned  
people and camels (Blanc, 2009). Although numerical models indicate that the wave heights of 15 m mentioned  
140 in historical reports from Tanger and Safi are most likely exaggerated and that values of 2.5-5.0 m are more realistic  
(Fig. 2a; Blanc, 2009; Renou et al., 2011), the effects of the 1755 tsunami on the coastal landscape of Morocco  
were nevertheless significant (e.g. Ramalho et al., 2018).

#### 3.2 Exploiting geological evidence for hazard assessment – The Rabat boulder fields

145 While instrumental and historical records demonstrate the flooding hazard at the Moroccan coast due to both  
storms and tsunamis, all documented events except the 1755 Lisbon Tsunami were restricted to the last decades.  
This does not allow for robust estimates of long-term tsunami and storm occurrence or of all possible magnitudes  
of storm surges and tsunami inundation. Most published regional geological tsunami and storm evidence for the  
pre-instrumental era is restricted to Spain and Portugal (e.g. Dawson et al., 1995; Hindson and Andrade, 1999;  
Lario et al., 2011; Costa et al., 2011; Feist et al., 2019), but fields of wave-displaced boulders offer records of past  
150 storms and/or tsunamis for Morocco (Mhammdi et al., 2008; Medina et al., 2011) that could inform about the  
regional long-term hazard if robust chronological data were available.

The most prominent boulder fields are reported from a 30 km long NE-SW oriented coastal section between Rabat  
and Skhirat (Fig. 2a,b), consisting of hundreds of boulders with estimated masses between a few and more than  
100 t (Mhammdi et al., 2008; Medina et al., 2011). The geomorphology and geology of this area is characterised  
155 by a succession of coast-parallel, Pleistocene calcarenite ridges that are related to sea-level highstands and rest on

a Palaeozoic basement (Chakroun et al., 2017). A typical cross section (Fig. 2c,d) is composed of: (i) the intertidal platform with an active coastal cliff; (ii) the youngest lithified calcarenite ridge, formed during MIS 5; (iii) an inter-ridge depression, called Oulja, which may be flooded at high tide (the spring tide range is 2-3 m), and which is covered by recent and/or Holocene beach deposits; and (iv) an older calcarenite ridge, probably formed during MIS 7, including an inactive cliff (Medina et al., 2011; Chakroun et al., 2017; Chahid et al., 2017). Towards Rabat, the younger calcarenite ridge is replaced by a simple sandstone platform (Fig. 2e).

As described by Mhammdi et al. (2008) and Medina et al. (2011), most of the calcarenite boulders were sourced from the active cliff (Fig. 2c). Since detachment is guided by lithological boundaries between the calcarenite and interbedded clay units, most of the boulders have platy shapes; only occasionally were boulders derived from subtidal positions and lifted up to 5 m vertically to the top of the first calcarenite ridge, as indicated by vermetids, or sourced from younger sandstones covering the Oulja. The boulders are deposited as single clasts, clusters, or imbricated stacks that rest on top or at the backward slope of the first calcarenite ridge, in the Oulja, or rarely at the seaward slope of the older calcarenite ridge up to 300 m inland (Fig. 2c). The position and orientation of bio-erosive rock pools formed on the surface of the youngest ridge (i.e. the pre-transport surface of most boulders) offers insights into transport modes. While some boulders moved by sliding only, others were overturned during transport as indicated by down-facing rock pools on the pre-transport surface (Mhammdi et al., 2008; Medina et al., 2011). For some of the larger boulders, sliding movement by storm waves after their initial detachment from the cliff is documented on satellite images (Fig. A3). Movement of smaller boulders with up to 1 m<sup>3</sup> (~2.5 t) was frequently observed after recent winter storms such as Hercules/Christina in January 2014 (Mhammdi et al., 2020). At some places along the coast between Rabat and Casablanca even boulders exceeding 10 t have been pushed landward during recent winter storms (Mhammdi et al., 2020).

#### 4. Methods

Boulders sampled for dating were characterized in the field with regard to their position, orientation, dimension and surface taphonomy. Distance from the active cliff and elevation above mean high tide level were measured using a laser range finder. Boulder volume estimates ( $V$ ) are based on tape measurements of a- (length), b- (width) and c-axes (height) and an empirical correction factor of 0.5 (Engel and May, 2012) using

$$V = (a * b * c) * 0.5, \quad (2)$$

To calculate boulder weights, volumes are multiplied with boulder densities ( $\rho_B$ ) determined individually for each sample using the Archimedean principle of buoyancy in water following

$$\rho_B = \rho_W * \frac{w_a}{w_a - w_w}, \quad (3)$$

with  $w_a$  = weight of the sample in air,  $w_w$  = weight of the sample in water and  $\rho_w$  = density of sea water (1.02 g/cm<sup>3</sup>). Surface orientation and inclination of sampled boulders were measured with a compass.

For OSL-RSED, samples of approximately 10 cm<sup>3</sup> were collected from selected boulder surfaces using a combination of a battery-driven rock drill, hammer and chisel. Rock samples were wrapped in black plastic bags and brought to the Cologne Luminescence Laboratory (CLL) for further processing under dimmed red-light conditions. First, a circular rock saw was used to cut ~5 cm thick surface slabs, from which cores of ~1 cm diameter and ~4 cm length were extracted using a bench drill (Proxxon Professional) with water cooled diamond core bits.

195 After immersion in resin (Crystalbond 509, the resin was tested to have no OSL emission) and subsequent oven drying to stabilize fragile parts of the sandstone cores, they were cut into ~0.7 mm thick slices using a water-cooled low speed diamond saw (Bühler Isomet 1000) with 0.3 mm blade thickness. Slices were gently crushed with a mortar to obtain polymineralic sand grains that were fixed on aluminium cups using silicon grease in monolayer. Separation of pure quartz and/or potassium feldspar for the grains of each slice, standard practice in conventional OSL dating, was not feasible due to the large number of slices and the small amount of polymineralic grains per slice.

200 To guide the selection of a measurement protocol for the polymineralic aliquots used for dating in this study, pure quartz and potassium feldspar extracts in the 150-200  $\mu\text{m}$  grain-size fraction were prepared from the light-shielded parts (i.e. >5 cm below surface) of the 10  $\text{cm}^3$  sample blocks of HAR 1-1 and TEM 3-1. Sample preparation followed standard coarse grain procedures including dry sieving, treatment with 10% HCl and 10%  $\text{H}_2\text{O}_2$ , density separation (potassium feldspar < 2.58  $\text{g}/\text{cm}^3$  < 2.62  $\text{g}/\text{cm}^3$  < quartz < 2.68  $\text{g}/\text{cm}^3$ ), and 40% HF etching in the case of quartz. Dose recovery experiments with signal resetting in a solar simulator for 24 hours and administering of a  
205 ~12 Gy laboratory beta dose, as well as continuous wave fitting of quartz BSL components using the **R** package “Luminescence” version 0.9.0.88 (Kreutzer et al., 2019) were performed for both the pure quartz and the polymineralic fraction. Preheat-plateau tests were performed on the quartz extracts to establish an appropriate measurement temperature. Quartz extracts of two samples (HAR 1-1 and TEM 3-1) were also used for palaeodose  
210 determinations following a conventional SAR protocol according to Murray and Wintle (2003) (Tab. A3). Combined with dose rates based on high-resolution gamma spectrometry and the conversion factors of Guerin et al. (2011), conventional OSL ages for the formation of the sandstone were calculated from palaeodoses using the DRAC software version 1.2 (Durcan et al., 2015).

All luminescence measurements of polymineralic aliquots for OSL-RSED followed a post-IRSL-BSL protocol  
215 (e.g. Banerjee et al., 2001). After preheating at 220  $^\circ\text{C}$  for 10 s, the protocol records an infrared stimulated luminescence (IRSL) signal at 50  $^\circ\text{C}$  for 160 s, followed by a blue stimulated luminescence (BSL) signal at 125  $^\circ\text{C}$  for 40 s (Tab. A2). Measurements were performed on a Risø TL/OSL DA20 reader equipped with an U340 filter for signal detection. All thermal treatments were performed with heating rates of 2  $^\circ\text{C}/\text{s}$ . In the post-IRSL-BSL protocol, stimulation with infrared LEDs specifically bleached luminescence signals originating from  
220 feldspar (feldspar IRSL). This reduced the contribution of feldspar signals to the BSL signal of quartz (quartz BSL), which unlike feldspar is insensitive to infrared stimulation (cf. Bailey, 2010).

For OSL-RSED, the natural OSL signals ( $L_n$ ) and the OSL signals in response to a ~12 Gy test dose ( $T_n$ ) of the  
225 post-IRSL-BSL protocol were measured for the polymineralic grains of all crushed slices to generate plots of OSL signal versus depth below the boulder surface. The depth-dependent  $L_n/T_n$  data of each core (mean of two aliquots) were normalized to the core’s individual plateau signal calculated from the average of the deepest 5-10 slices. The normalized data of all cores of a sample were then averaged (arithmetic mean and standard error) to receive a mean signal-depth curve for each rock sample; we only excluded cores without any signal-depth trends and data points that deviated more than two standard deviations from the mean. The mean signal-depth curves were fitted with  
230 Equation (1) using the rock surface exposure dating function in the **R** package “Luminescence” (Burow, 2019) and the software OriginPro (version 8.5).  $\mu$  and  $\overline{\sigma\phi_0}$  values shared between several samples were determined using the “global fit” function that allows the fitting of multiple signal-depth curves at the same time. Post-depositional erosion has recently been shown to exercise a strong effect on the depth of the bleaching front, and thus the

apparent age, of exposed rock surfaces (Sohbati et al., 2018; Lehmann et al., 2019a,b; Brown and Moon, 2019).  
235 Their potential effects were therefore modelled using the approach of Lehmann et al. (2019a).

## 5. Results

### 5.1 Boulders selected for OSL surface exposure dating

Samples for OSL-RSED were collected from nine boulders at four different sites along the Rabat coast in July  
240 2016, including Rabat (RAB), Haroura (HAR), Temara (TEM) and Val d'Or (VAL) (Fig. 2b). Boulders selected  
for dating were composed of carbonate-cemented sandstone (calcarenite) with clear signs of overturning during  
cliff detachment, indicated by down-facing rock pools and/or fresh-looking post-transport surfaces (Fig. 3d). Due  
to the platy shape of the boulders, repeated overturning on the coastal platform after cliff detachment can be  
excluded. To ensure comparable conditions for sunlight exposure, only surfaces without significant shielding by  
vegetation, other boulders or water, and wherever possible without significant inclination of their top surfaces  
245 were sampled. Most sampled boulders, thus, rested in supratidal positions and had relatively smooth post-transport  
surfaces (RAB 1, HAR 1, HAR 2, TEM 3, VAL 4, VAL 6). However, boulders from the intertidal platform with  
post-transport rock pools (VAL 1, Fig. 3h) or boulders with higher surface roughness probably due to increased  
sea spray influence (TEM 2 and RAB 5, Fig. 3g) were also sampled for assessing the effects of post-depositional  
erosion on dating accuracy. In addition, surfaces of niches in the active cliff, exposed after detachment of the  
250 associated boulders, were sampled at Haroura (HAR 3, Fig. 3e) and Temara (TEM 4).

The characteristic features of all sampled boulders – including post-transport position, arrangement, shape,  
dimension, orientation of the sampled surface and taphonomy of boulder surfaces – are summarized in Table 1.  
Satellite images covering the last 50 years (Google Earth images from 2001 to 2019, Corona images from 1966),  
field observations for very young features, and, in case of VAL 1, the depth of post-depositional rock pools helped  
255 to roughly constrain when the boulders and niches were deposited or formed (see Tab. A1 for a summary). Precise  
age control by observations of local residents confirmed the movement of boulder TEM 3 during winter storm  
Hercules/Christina in January 2014 ( $t_e = 2.5$  years), and the formation of niche TEM 4 (sampled in September  
2018) between the 2016 and 2018 field surveys, most likely during the unnamed winter storm in February 2017  
( $t_e = 1.5$  years) (Fig. A4). Corona satellite images provide minimum ages of 50 years for boulders RAB 1, RAB 5,  
260 VAL 1, VAL 4 and HAR 2, since all of them were identified at their present position on images from April 1966  
(Fig. A5, A6, A7, A8, A9). However, considering the up to 45 cm deep post-depositional rock pools on the surface  
of VAL 1 and assuming typical rates of bio-erosion in the range of up to 1 mm/year (Kelletat, 2013), boulder VAL  
1 is probably much older than 50 years, at least a few centuries. All other boulders and niches could not be  
identified on the 1966 satellite images due to their limited resolution. However, these clasts did not change their  
265 position between 2001/2004 and 2019 (Fig. A9, A10, A11), equalling minimum ages of 12-15 years (Tab. A1).

### 5.2 Luminescence properties of the target sandstone

Comparative measurements on polymineralic grains and potassium feldspar extracts on sample HAR 1-1 show  
that post-IRSL-BSL signals from the polymineralic aliquots of all four sites are (i) the dominant emission  
compared to IRSL signals, and (ii) relatively unaffected by a feldspar signal contribution (Fig. A12). Therefore,  
270 OSL-RSED in this study was based on the mainly quartz derived post-IRSL-BSL signal of polymineralic aliquots.  
Experiments on pure quartz extracts of sample HAR 1-1 revealed adequate OSL properties in terms of rapidly

decaying signals dominated by the fast component (Fig. A12a,b), independence of thermal treatment for the selected preheat temperature (Fig. A13), and good reproducibility of laboratory doses (dose recovery ratios of 1.02-1.08). Similarly, suitable OSL properties, i.e. signals dominated by the quartz fast component (Fig. A12c) and successful dose recovery experiments, are also documented for post-IRSL-BSL signals of polymineralic aliquots.

When plotted against their depth below the boulder surface, test dose corrected and normalized mean post-IRSL-BSL signals from the uppermost 15 mm of each sample (note that signal-depth curves of each sample are based on 2 to 5 cores with 2 aliquots per slice) showed a general increase from completely reset signals at the rock surface towards a constant plateau level deeper in the rock (Fig. 4, Fig. A14, A15). These plateaus reflected a quartz palaeodose of ~40-50 Gy or a rock formation age of ~80-100 ka (measured on HAR 1-1 and TEM 3-1, Tab. A4), which is below the sample-specific saturation level of 50-120 Gy. The robustness of the average post-IRSL-BSL-depth trends used for dating is supported by good reproducibility of signals derived from different aliquots of the same slice (Fig. 4a), and reasonable correlation of different cores from the same sample (Fig. 4b, Fig. A14, A15). Where signal-to-noise ratios also allowed feldspar IRSL signals to be analysed (i.e. at TEM and RAB), these showed bleaching fronts that intruded deeper into the rock compared to the post-IRSL-BSL signal (Fig. 4c, Fig. A14, A15).

### 5.3 Calibration of the OSL rock surface exposure dating model using artificially exposed surfaces

To estimate boulder ages with OSL-RSED, measured post-IRSL-BSL signal-depth data must be fitted with the bleaching model described in Equation (1). Besides the exposure time ( $t_e$ ), the bleaching model contains two further *a priori* unknown parameters: the effective OSL signal bleaching rate at the rock surface ( $\overline{\sigma\phi_0}$ ), and the light attenuation in the rock ( $\mu$ ). These vary with geographical location and rock type, respectively, and have to be determined individually for each location and lithology prior to dating. Since determination on the basis of first order principles was not successful in earlier studies (Sohbati et al., 2011), for the Rabat site these parameters were obtained empirically by fitting Equation (1) to calibration samples with known exposure ages (e.g. Sohbati et al., 2012; Lehmann et al., 2018).

For this, fresh rock surfaces were exposed during the first field survey in July 2016 and sampled during the second survey in September 2018, equivalent to an exposure time of ~2.15 years. A total of five calibration samples, at least one rock sample from each site, were collected (CAL samples in Tab. 1). Exposures were created directly on the top surfaces of boulders RAB 5, TEM 3 and VAL 4 (Fig. A16b,d), as well as by placing previously unexposed rock samples collected from boulders HAR 1 and VAL 4 on the roof top of a nearby house (Fig. A16a,c). Since the effective luminescence decay rate ( $\overline{\sigma\phi_0}$ ) is sensitive to the inclination and orientation of the dated rock surfaces (Gliganic et al., 2019), all exposure surfaces except from TEM 3 CAL, which had the same inclination as the associated dating sample, were orientated approximately horizontally.

The first step was the estimation of a rock-specific  $\mu$  value. Light attenuation in the rock may be influenced by small-scale variations in lithology and therefore  $\mu$  should have sample-dependent values (Gliganic et al., 2019). However, individual best-fit  $\mu$  values that were achieved by fitting Equation (1) to the post-IRSL-BSL signal-depth data of individual samples while treating the product of age and  $\overline{\sigma\phi_0}$  as a single parameter (e.g. Sohbati et al., 2015) revealed huge uncertainties. Sample-specific best-fit  $\mu$  values ranged between 0.5 and 3.4 mm<sup>-1</sup> for the boulder samples in this study (Tab. 2), while literature values for the BSL signal of quartz sandstone and quartzite



are in the range of 0.9-1.3 mm<sup>-1</sup> (cf. Sohbati et al., 2012, Gliganic et al., 2019). This indicates that sample-specific values in this study may not only be imprecise but, due to large measurement uncertainties, may also be incorrect for some samples. Since the estimation of shared  $\mu$  values for several rock samples can improve the accuracy of the estimate significantly (Lehmann et al., 2018), the use of a shared  $\mu$  value for all samples was chosen as a reasonable and necessary compromise. The assumption of a common  $\mu$  value for all boulders targeted in this study is supported by their very similar lithology, since all of the boulders are derived from the same local calcarenite facies. The mutual  $\mu$  value was obtained by simultaneously fitting Equation (1) to the signal-depth data of all samples (n = 16) except from VAL 4-1 CAL 2 and RAB 5-1 CAL, which revealed extremely scattered data and were therefore excluded from all further analyses (Fig. 5). While  $\mu$  was defined as a free parameter shared between all samples, the product of exposure time and  $\overline{\sigma\varphi_0}$  was kept a free parameter with individual values for each sample. The mutual  $\mu$  value of 1.39±0.15 mm<sup>-1</sup> (Tab. 2) seems to be much more realistic when compared to the literature values for BSL signal attenuation in quartz sandstone and quartzite of 0.9-1.3 mm<sup>-1</sup> (cf. Sohbati et al., 2012, Gliganic et al., 2019).

In a second step, local values for  $\overline{\sigma\varphi_0}$  were determined. Since all samples in this study were collected within a radius of less than 20 km, the local light flux should be similar for all surfaces with comparable inclination and orientation. This was supported when fitting each calibration sample individually with fixed values for  $\mu$  (1.39 mm<sup>-1</sup>) and exposure age (2.15 years) (Fig. 5, Tab. 2), reflecting systematic differences of  $\overline{\sigma\varphi_0}$  between the inclined calibration surface of TEM 3-1 CAL (1.4x10<sup>-5</sup> s<sup>-1</sup>) and the horizontal calibration surfaces of all other calibration samples (2.1x10<sup>-7</sup> to 4.7x10<sup>-8</sup> s<sup>-1</sup>). We therefore determined a shared  $\overline{\sigma\varphi_0}$  value for horizontal surfaces by simultaneously fitting calibration samples VAL 4-1 CAL 1 and HAR 1-1 CAL (i.e. again excluding VAL 4-1 CAL 2 and RAB 5-1 CAL), using  $\overline{\sigma\varphi_0}$  (shared) as a free variable, and the mutual  $\mu$  value of 1.39 mm<sup>-1</sup> and an exposure age of 2.15 years as fixed parameters. This resulted in shared  $\overline{\sigma\varphi_0}$  values of 2.6x10<sup>-6</sup>±5.3x10<sup>-7</sup>s<sup>-1</sup> for the inclined surface and 3.0x10<sup>-7</sup>±7.0x10<sup>-8</sup>s<sup>-1</sup> for horizontal surfaces (Fig. 5, Tab. 2).

#### 5.4 Model validation and dating of boulders with unknown transport ages

OSL exposure ages for all non-calibration boulder and niche samples were derived by fitting their post-IRSL-BSL signal-depth profiles with Equation (1) using the mutual  $\mu$  value and the shared  $\overline{\sigma\varphi_0}$  value for horizontal surfaces (the value for inclined surfaces was only used for TEM 3-1 and TEM 4-1) as fixed parameters (Tab. 2). Complete incorporation of both  $\mu$  and  $\overline{\sigma\varphi_0}$  uncertainties resulted in relatively large fitting uncertainties (Fig. 6a) that were finally reflected in the error margins of the OSL surface exposure ages. The fitted post-IRSL-BSL signal-depth curves of all dating samples and the associated exposure ages are summarized in Figure 6b and Table 2, respectively. To evaluate the accuracy of model-derived exposure ages, they were compared with minimum transport ages deduced from satellite images, eyewitness observations and the depth of bio-erosive rock pools (Fig. 6c). The OSL surface exposure ages of most samples agree with the control ages, i.e. ages either post-dated the minimum age or showed overlap within their dating uncertainties. However, the exposure ages of samples RAB 1-2, VAL 1-1, VAL 1-2, HAR 1-1 and HAR 2-1 were too young, i.e. they pre-dated the minimum control ages.

#### 5.5 Modelling post-depositional erosion of boulder surfaces

In order to explore whether erosion offers a plausible explanation of the age underestimations recorded for samples RAB 1-2, HAR 1-1, HAR 1-2, VAL 1-1 and VAL 1-2, the potential effect of erosion on the luminescence

bleaching profiles was modelled using the numerical approach of Lehmann et al. (2019a). The modelled sample  
350 ages ( $t_{\text{exp mean}}$ ) and minimum independent ages ( $t_{\text{age control}}$ ) were used as model inputs, together with the shared values  
of  $\mu$  and  $\overline{\sigma\varphi_0}$  (Tab. 2). 50 different erosion rates from 0.001 mm/year to 1 mm/year were tested together with 50  
different times for the onset of erosion ( $t_s$ ) ranging from 1 year to the independent sample age (both variables were  
sampled equidistantly in log space). The misfits between modelled and measured values were determined and  
355 paths with normalised misfit  $>0.99$  were retained. The sensitivity of the calculated erosion rates to the independent  
age was also evaluated by contrasting the results calculated for sample VAL 1-1 for independent ages of 50 years,  
450 years and 6000 years, which reflect the minimum exposure age based on satellite images, a plausible estimate  
of the boulder turning age based on the depth of post-depositional rock pools (assuming bio-erosion of 1 mm/year;  
cf. Kelletat, 2013) and finally the time when Holocene sea level reached approximately its present position. The  
calculated erosion rates vary dependent on  $t_s$  (Fig. 7), thus to facilitate comparison, erosion rates for  $t_s$  equal to the  
360 respective expected age (i.e. assuming constant erosion during exposure) are contrasted between samples (Tab.  
A5). The modelled erosion rates tend to increase with increasing surface age, from 0.02 mm/year assuming an age  
of 50 years, to 0.03 mm/year assuming ages of 450 and 6000 years in case of sample VAL 1-1. Thus, erosion rate  
estimates based on minimum control ages should be regarded as minimum values. Minimum erosion rates varied  
from 0.18 mm/year (HAR 1-1) to 0.02 mm/year (VAL 1-1), maximum values (based on maximum ages) may be  
365 slightly larger as indicated for VAL 1-1. In agreement with expectation, the model did not identify any significant  
erosion (i.e. erosion rates  $<0.01$  mm/year) for samples that do not underestimate the minimum control ages.

## 6. Discussion

### 6.1 Performance of OSL surface exposure dating on calcarenite boulders

The OSL surface exposure ages derived for boulders and niches from the Rabat coast show two striking  
370 characteristics: (1) All exposure ages are associated with relatively large dating uncertainties compared to previous  
applications of OSL-RSED (e.g. Sohbaty et al., 2012; Lehmann et al., 2018); and (2) five of the 13 dated boulder  
samples yield OSL exposure ages that underestimate minimum ages deduced from satellite imagery and rock-pool  
depth, even when their uncertainties are considered (Fig. 6c).

The low dating precision observed in this study is mainly the result of the boulder source rock, a late Pleistocene  
375 calcarenite. All rock samples dated in this study display strongly scattered post-IRSL-BSL signal-depth data (e.g.  
Fig. 4 and Fig. 5) that entail large fitting uncertainties, imprecisely constrained  $\mu$  and  $\overline{\sigma\varphi_0}$  parameters and,  
eventually, large dating uncertainties. OSL signal scatter is primarily due to dim post-IRSL-BSL signals with not  
more than a few hundred photon counts in the analysed signal interval. Since pure quartz extracts of the same  
380 samples proved to be rather sensitive (Fig. A12), dim post-IRSL-BSL signals must be the result of low percentages  
of quartz on the carbonate-rich polymineralic aliquots used for dating. Additional signal scatter for our samples  
may be introduced by spatial variations of light penetration that is caused by heterogeneities in the rock mineralogy  
(Meyer et al., 2018) and core-to-core variations of OSL signal resetting (Sellwood et al., 2019). Previous studies  
demonstrated that lithologies with brighter quartz signals in polymineralic samples (e.g. quartzite or quartz-  
dominated sandstone) or stronger feldspar signals to avoid using quartz OSL for dating (e.g. granite or gneiss) can  
385 provide much higher dating precision than achieved for the Rabat boulders (Sohbaty et al., 2012; Freiesleben et al.,  
2015; Lehmann et al., 2018; Gliganic et al., 2019).

Although large post-IRSL-BSL signal scatter may also affect dating accuracy, since it prevents using individual  $\mu$  values for each sample as suggested e.g. by Gliganic et al. (2019), the unambiguous disagreement between exposure ages and age control for five of the boulder samples (Fig. 6c) is interpreted to result from unreliable  $\overline{\sigma\varphi_0}$  values and post-depositional erosion. In the constrained geographical area visited in this study,  $\overline{\sigma\varphi_0}$  should be comparable for all boulder surfaces as long as they share the same aspect and inclination (e.g. Sohbati et al., 2018). However, if calibration and dating samples do not share surface inclination and aspect, the use of a shared  $\overline{\sigma\varphi_0}$  value is inappropriate, as observed in controlled bleaching experiments (Gliganic et al., 2019) and indicated by the systematic differences of  $\overline{\sigma\varphi_0}$  between calibration samples with inclined and flat surfaces in this study. The clearly too young OSL exposure ages of samples HAR 2-1 and RAB 1-2, i.e.  $17\pm 6$  and  $12\pm 3$  years, although both boulders were overturned at least 50 years ago (Fig. 6c), could reflect the mismatch between their inclined surfaces and fitting with a  $\overline{\sigma\varphi_0}$  that was determined on flat calibration surfaces. Future boulder dating studies should ensure calibration samples with comparable inclination and orientation to the dating samples.

Besides inadequate model calibration, OSL rock surface exposure ages become inaccurate when their OSL signal-depth curves are affected by environmental factors different than exposure time. Since OSL-RSED is restricted to the uppermost few mm or cm of rock surfaces, the position and shape of the bleaching front is very susceptible to erosion (Sohbati et al., 2018; Lehmann et al., 2019a,b; Brown and Moon, 2019). For soft sandstone boulders in the coastal zone as dated here, the combination of sea-spray and rain-induced weathering and strong winds is likely to cause erosion of grains at the exposed post-transport surfaces (e.g. Mottershead, 1989). By yielding erosion rates from 0.02 to 0.18 mm/year, inversion of the rock surface-exposure data for boulder samples that clearly underestimate age control (i.e. RAB 1-2, HAR 1-1, HAR 1-2, VAL 1-1 and VAL 1-2) supports the assumption of significant erosion for some of the boulders dated in this study (Fig. 7).

The erosion processes of interest in this study are affecting the surface of the boulders at the spatial scale of the individual mineral grains and timescales of centuries to millennia. Empirical approaches such as micro-erosion meters (Stephenson and Finlayson, 2009) and remote sensing methods (Moses et al., 2014), allow accurate erosion rate quantification but only on sub-decadal timescales. On the other hand, terrestrial cosmogenic nuclide concentrations provide erosion rate estimates from exposed bedrock (Small et al., 1997; Portenga and Bierman, 2011) but only on timescales of  $> 10^4$ - $10^6$  years and over spatial scales of several decimetres to several meters. Besides being an emerging method and still in development, the OSL-RSED method allows to quantify surface erosion stories according to linear, non-linear and stochastic temporal functions at the sub-centimetre scale and over timescales of centuries to millennia (Sohbati et al., 2018; Lehmann et al., 2019a,b; Brown and Moon, 2019). The impact of erosion inferred from luminescence signal-depth data in this study agrees with expectations based on geomorphological evidence for boulders with post-transport surfaces covered by bio-erosive rock pools, such as boulder VAL 1. Since the lower part of this boulders is lying in the intertidal zone, modelled erosion rates of 0.02 to 0.07 mm/year can be explained by weathering due to sea spray and overtopping waves. These data also illustrate the spatial heterogeneity in erosion rates for some of the coastal boulders sampled and the importance of careful sample location selection. Comparable erosion rates of 0.04-0.06 mm/year were inferred for boulders in supratidal positions despite their apparently smooth surfaces (HAR 2-1, RAB 1-2). Thus, our data suggest that some influence of erosion cannot unambiguously be ruled out even for calcarenite boulders with apparently smooth surfaces, and all OSL-RSED ages for boulders in this study should be interpreted with caution. While these erosion rates are based on the assumption of constant erosion, the comparatively large erosion rate of 0.18 mm/year for

the smooth and fresh-looking surface HAR 1-1 may indicate accelerated erosion in the first few years after exposure of fresh boulder surfaces..

430 Other environmental factors that might affect OSL exposure ages are assumed to be negligible for all dated boulders. The post-transport surfaces of all boulders are bare of vegetation and not shielded by topography or houses. The surfaces of boulders in the intertidal zone (i.e. VAL 1) may be overtopped by waves during stronger storms (particularly contemporaneous with high-tide conditions), but periods with submersion are insignificantly short compared to the total exposure time. Likewise, the exposure duration of the calibration surfaces, i.e. another important parameter for model calibration, had no negative effect on dating accuracy. The exposure time of ~2  
435 years used in this study was more than sufficient to generate pronounced bleaching fronts in all calcarenite samples. Although model calibration generally benefits from calibration samples with long, and in the best case several different, exposure durations, even shorter exposure intervals than 2 years would have sufficed. In boulder samples with bright IRSL signals, these were even better bleached than the associated post-IRSL-BSL signals (Fig. 4c), potentially because longer wavelengths that feldspar signals are sensitive to are less attenuated by the rock than  
440 the shorter wavelengths (Ou et al., 2018) that bleach quartz signals (Wallinga, 2002). Thus, the application of IRSL instead of post-IRSL-BSL signals may reduce the time required for calibration to durations as short as a few months (Freiesleben et al., 2015; Ou et al., 2018). While IRSL signals were not used in this study due to insufficiently bright signals for most samples, in retrospect their use might be advantageous to post-IRSL-BSL signals at least for some of the investigated boulders.

## 445 **6.2 New information on storm and tsunami hazard at the Atlantic coast of Morocco**

Knowing the chronology of boulder transport can help to better assess the local flooding hazard at the Rabat coast. Energetic waves during storms and tsunamis will generally exacerbate the effects of coastal flooding in the course of climate-induced sea-level rise (Nicholls et al., 2018). It is therefore of paramount interest whether coastal inundation strong enough to lift boulders at the Rabat coast only occurred during the very rare tsunami events,  
450 such as the 1755 Lisbon Tsunami, or also during much more frequent winter storms. While the discrimination between storm and tsunami transport based on boulder features is hardly possible, with the exception of extreme cases that disregard storm transport due to exceptional boulder masses or elevations (Lau and Autret, 2020 and references therein), chronological patterns of boulder detachment may provide useful information for the recognition of storm and tsunami boulders.

455 Comparison with satellite images showed that apparent OSL-RSED ages definitely do not reflect the timing of cliff detachment for boulders affected by severe post-depositional erosion (VAL 1-1 and VAL 1-2, squares in Fig. 6c) and for boulder samples with significantly inclined surfaces (HAR 2-1 and RAB 1-2, stars in Fig. 6c); the associated OSL exposure ages cannot be considered for any further interpretation. All other boulder samples, including those with apparently smooth surfaces, were likely affected to some extent by erosion as well. Slight age  
460 underestimation, thus, cannot be excluded and their exposure ages should be interpreted carefully. We nevertheless are confident that the latter provide valuable relative chronological information for the cliff detachment of boulders that is shown in Figure 8a and allows differentiation between boulder ages.

The reliability of this relative chronology is supported by correlation between OSL exposure ages and the surface taphonomy of the associated boulders and niches (Fig. 8a, b). Exposure ages younger than ~10 years were achieved  
465 for boulders and niches with smooth surfaces and fresh fractures, i.e. taphonomy classes 4 and 5 (TEM 4, TEM 3, HAR 1; Fig. 8b1). Boulders with exposure ages between ~10 and ~100 years are characterised by smooth surfaces

with very scarce lichen or algae cover, i.e. taphonomy classes 3 and 4 (HAR 3, VAL 4, VAL 6, TEM 2; Fig. 8b2). Finally, boulders with exposure ages older than ~100 years are characterised by weathered fractures and rougher surfaces, i.e. taphonomy classes 2 and 3 (RAB 1, RAB 5; Fig. 8b3,b4). According to the chronology presented here, with OSL exposure ages of 30-250 years (VAL 4) and 60-490 years (RAB 1), only two boulders may have been moved by the 1755 Lisbon Tsunami. However, with masses of 16-37 t and positions on the intertidal platform (RAB 1) or on top of cliffs 3-4 m above sea level (VAL 4), they do not systematically differ from the other dated boulders in terms of wave power required for transportation.

Although the relative chronology does not unambiguously allow for correlating individual boulders with specific historical storms or tsunamis, two important conclusions with regard to the local flooding hazard can be drawn from the dataset. Firstly, the relative chronology in Figure 8a implies that most boulders at the Rabat coast were detached from the cliff and overturned by storm waves. The large spread of OSL exposure ages between a few years and several centuries indicates that numerous transport events were responsible for the formation of the dated boulders. Since the 1755 Lisbon Tsunami was the only tsunami with significant flooding at the Moroccan Atlantic coast during the last 1000 years (Kaabouben et al., 2009), boulder transport dominated by tsunamis is assumed to have resulted in more significant clustering of ages around ~260 years ago.

Secondly, correlation of exposure ages and masses of the associated boulders shows that storm waves were capable of lifting much larger boulders than observed during recent winter storms. At the Rabat coast, observations from the last decade are restricted to the lifting of smaller boulders (Mhammdi et al., 2020), while boulders larger than ~5 t were only observed to move by sliding (Fig. A3). However, boulders with OSL exposure ages that clearly postdate the 1755 Lisbon Tsunami and therefore must have been lifted by storms reach up to 21-24 t (VAL 6, RAB 5). These storm boulders yield comparable masses as boulders that, based on their exposure ages, might have been transported and overturned during the 1755 Lisbon Tsunami (i.e. VAL 4 and RAB 1 with masses of 16-37 t). Of course, we cannot exclude that the largest boulders at the Rabat coast, such as VAL 1 with ~65 t that could not be dated with OSL-RSED due to strong erosion of its post-transport surface in the intertidal zone, can exclusively be overturned by tsunamis. Nevertheless, in agreement with hydrodynamic experiments (Cox et al., 2019), observations after recent tropical cyclones or winter storms (e.g. May et al., 2015; Cox et al., 2018), and other boulder studies from the North Atlantic (e.g. Oliveira et al., 2020), our results support the perception that storm waves significantly contribute to boulder quarrying along cliffs and may be considered the most important driver for the evolution of wave-emplaced coarse-clast deposits in storm-prone areas worldwide, including boulders with masses of several tens of tons that occasionally have been associated with tsunamis previously. It is, therefore, likely that also most other boulders documented along the Atlantic coasts of Morocco and the Iberian Peninsula, for some of which the 1755 Lisbon Tsunami and potential predecessors have tentatively been discussed as an alternative explanation to storm waves (Whelan and Kelletat, 2005; Scheffers and Kelletat, 2005; Mhammdi et al., 2008; Medina et al., 2011), in fact represent storm boulders. Interpretation of tsunami boulders at the storm-prone coast of the North Atlantic should be restricted to the very rare cases, where chronological information is precise enough to relate them to a specific event such as the 1755 Lisbon tsunami (e.g. Costa et al., 2011; Oliveira et al., 2020).

## 7. Conclusions

505 OSL rock surface exposure dating was for the first time tested on coastal boulders overturned during wave transport to evaluate its reliability as a dating approach in this setting. Successful calibration of the bleaching model using surfaces exposed for ~2 years and evaluation of OSL exposure ages against satellite images indicate the potential of the approach for boulders with limited post-depositional erosion and with surface inclination in agreement with that of the calibration samples. Although fitting uncertainties as a consequence of low amounts of quartz and  
510 potassium feldspar in the source rock introduced relatively large dating uncertainties, and although a bias due to post-depositional erosion cannot be excluded even for boulders with smooth surfaces, OSL rock surface exposure dating provides a relative chronology for boulders that could not be dated with any other approach so far. This relative chronology indicates a large variability of boulder ages, most of them different from the only tsunami event at the Rabat coast within the last 2000 years. Thus, OSL exposure ages suggest that even boulders weighing  
515 >24 t were moved and overturned by storm waves. This supports the conclusion of previous studies that storms rather than tsunamis can be the most important driver for the formation of coastal boulder deposits in general. While OSL-RSED offered important relative chronological information for the Rabat coastal boulders but could not provide absolute ages, the approach may be a powerful tool for dating boulder deposits with more favourable lithologies. Magmatic rocks, such as granites, are not only significantly less susceptible to erosion, typically they  
520 also allow measurement of the luminescence signal of potassium feldspar. Different from the quartz signals of the calcarenite used in this study, IRSL signals of potassium feldspar measured on polymineralic aliquots do not suffer from contamination by other minerals and are typically much brighter than those of quartz. Such lithological properties promise to reduce the uncertainties and inaccuracies related to OSL surface exposure dating of coastal boulders in this study significantly. While OSL-RSED will not be able to date boulder sites with pure limestone  
525 lithologies, our result demonstrate its potential for providing unique chronological information for non-carbonate boulders that today cannot be dated by any other technique.

### Author contributions

D.B. and S.M. conceived the study and obtained funding. D.B., S.M., N.M. and G.K. conducted fieldwork. N.M. provided site information and eyewitness accounts. D.B., S.M., D.W. and A.Z. established the equipment for  
530 sample preparation at the CLL. D.B. conducted the measurements and evaluated the data. C.B. provided the R-scripts for data analyses and helped with data fitting. S.M, G.K and B.L. helped with analysing and interpreting the data. H.B. along with all other authors commented on the manuscript at all stages.

### Data availability

The complete dataset of  $L_x/T_x$  values of all samples that were used for the fitting of luminescence depth data in  
535 this study are available on PANGEA (<https://doi.org/10.1594/PANGAEA.919187>).

### Competing interests

"The authors declare that they have no conflict of interest."

## Acknowledgements

This study was funded by the Deutsche Forschungsgemeinschaft (DFG, German Research Foundation, GZ: BR 540 5023/3-1 and MA 5768/2-1). The authors are grateful to M. Malika Ait and A. Chiguer for their support during the first field survey in Morocco in July 2016. We would also like to thank the Moroccan Association of Geosciences in the person of its President, Prof. Medina Fida for its support.

## References

- Araoka, D., Yokoyama, Y., Suzuki, A., Goto K., Miyagi, K., Miyazawa, K., Matsuzaki, H. and Kawahata H.:  
545 Tsunami recurrence revealed by Porites coral boulders in the southern Ryukyu Islands, Japan, *Geology*, 41, 919–922, doi:10.1130/G34415.1, 2013.
- Bailey, R.M.: Direct measurement of the fast component of quartz optically stimulated luminescence and implications for the accuracy of optical dating, *Quaternary Geochronology*, 5, 559-568, 2010.
- Banerjee, D., Murray, A.S., Botter-Jensen, L. and Lang, A.: Equivalent dose estimation using a single aliquot of  
550 polymineral fine grains, *Radiation Measurements*, 33, 73-94, 2001.
- Baptista, M.A., Miranda, J.M., Chierici, F., and Zitellini, N.: New study of the 1755 earthquake source based on multi-channel seismic data and tsunami modelling, *Natural Hazards and Earth System Sciences*, 3, 333-340, 2003.
- Barton, R.N.E., Bouzouggar, A., Collcutt, S.N., Schwenninger, J.-L. and Clark-Balzan, L.: OSL dating of the Aterian levels at Dar es-Soltan I (Rabat, Morocco) and implications for the dispersal of modern Homo sapiens,  
555 *Quaternary Science Reviews*, 28, 1914-1931, 2009.
- Blanc, P.L.: Earthquakes and tsunami in November 1755 in Morocco: a different reading of contemporaneous documentary sources, *Natural Hazards and Earth System Sciences*, 9, 725-738, 2009.
- Brown, N.D. and Moon, S.: Revisiting erosion rate estimates from luminescence profiles in exposed bedrock surfaces using stochastic erosion simulations, *Earth and Planetary Science Letters*, 528, 115842, 2019.
- 560 Burow, C.: fit\_SurfaceExposure(): Nonlinear Least Squares Fit for OSL surface exposure data. Function version 0.1.0. In: Kreutzer, S., Burow, C., Dietze, M., Fuchs, M.C., Schmidt, C., Fischer, M., Friedrich, J.: *Luminescence: Comprehensive Luminescence Dating Data Analysis*, R package version 0.9.0.87, <https://CRAN.R-project.org/package=Luminescence>, 2019.
- Chahid, D., Boudad, L., Lenoble, A., Lamothe, M., Chakroun, A., Falguères, C. and Nespoulet, R.: Les paléorivages des formations littorales atlantiques du Pléistocène moyen—supérieur de Rabat-Témara (Maroc),  
565 *L'Anthropologie*, 121, 122–132, 2017.
- Chakroun, A., Chahid, D., Boudad, L., Campmas, E., Lenoble, A., Nespoulet, R. and El Hajraoui, M.A.: The Pleistocene of Rabat (Morocco): Mollusks, Coastal Environments and Human Behavior, *African Archaeological Reviews*, 34, 493-510, 2017.
- 570 Costa, P., Andrade, C., Freitas, M., Oliveira, M., da Silva, C.M., Omira, R., Taborda, R., Baptista, M.A. and Dawson, A.G.: Boulder deposition during major tsunami events, *Earth Surface Processes and Landforms*, 36, 2054-2068, 2011.
- Cox, R., O'Boyle, L. and Cytrynbaum, J.: Imbricated coastal boulder deposits are formed by storm waves, and can preserve long-term storminess record, *Scientific Reports*, 9, 10784, doi:10.1038/s41598-019-47254-w5, 2019.

- 575 Cox, R., Jahn, K.L., Watkins, O.G. and Cox, P.: Extraordinary boulder transport by storm waves (west of Ireland, winter 2013–2014), and criteria for analysing coastal boulder deposits, *Earth-Science-Reviews*, 177, 623-636, 2018.
- Dawson, A.G., Hindson, R., Andrade, C., Freitas, C., Parish, R. and Bateman, M.: Tsunami sedimentation associated with the Lisbon earthquake of 1 November AD 1755: Boca do Rio, Algarve, Portugal, *The Holocene* 5, 209-215, 1995.
- 580 Durcan, J.A., King, G.E. and Duller, G.A.T.: DRAC: Dose rate and age calculator for trapped charge dating, *Quaternary Geochronology*, 28, 54-61, 2015.
- Engel, M. and May, S.M.: Bonaire's boulder fields revisited: evidence for Holocene tsunami impact on the Leeward Antilles, *Quaternary Science Reviews*, 54, 126-141, 2012.
- 585 Feist, L., Frank, S., Bellanova, P., Laermanns, H., Cämmerer, C., Mathes-Schmidt, M., Biermanns, P., Brill, D., Costa, P., Teichner, F., Brückner, H., Schwarzbauer, J. and Reicherter, K.: The sedimentological and environmental footprint of extreme wave events in Boca do Rio, Algarve coast, Portugal, *Sedimentary Geology*, 389, 147-160, 2019.
- Freiesleben, T., Sohbaty, R., Murray, A., Jain, M., al Khasawneh, S., Hvidt, S. and Jakobsen, B.: Mathematical model quantifies multiple daylight exposure and burial events for rock surfaces using luminescence dating, *Radiation Measurements*, 81, 16-22, 2015.
- 590 Gliganic, L.A., Meyer, M., Sohbaty, R., Jain, M. and Barrett, S.: OSL surface exposure dating of a lithic quarry in Tibet: Laboratory validation and application, *Quaternary Geochronology*, 49, 199-204, 2019.
- Guerin, G., Mercier, N. and Adamiec, G.: Dose-rate conversion factors: update, *Ancient TL*, 29, 5-8, 2011.
- 595 Hindson, R.A. and Andrade, C.: Sedimentation and hydrodynamic processes associated with the tsunami generated by the 1755 Lisbon earthquake, *Quaternary International*, 56, 27-38, 1999.
- Jenkins, G.T.H., Duller, G.A.T., Roberts, H.M., Chiverrell, R.C. and Glasser, N.F.: A new approach for luminescence dating glaciofluvial deposits – High precision optical dating of cobbles, *Quaternary Science Reviews*, 192, 263-273, 2018.
- 600 Kaabouben, F., Baptista, M.A., Iben Brahim, A., El Mouraouah, A. and Toto, A.: On the moroccan tsunami catalogue, *Natural Hazards and Earth System Sciences*, 9, 1227-1236, 2009.
- Kelletat, D.: *Physische Geographie der Meere und Küsten. Eine Einführung*, 3<sup>rd</sup> edition, Borntraeger, pp. 290, 2013.
- Khan, N.S., Ashe, E., Shaw, T., Vacchi, M., Walker, J., Peltier, W.R., Kopp, R.E. and Horton, B.P.: Holocene relative sea-level changes from near-, intermediate- and far-field locations, *Current Climate Change*, 1, 247-262, 2015.
- 605 King, G.E., Valla, P.G. and Lehmann, B.: Rock surface burial and exposure dating. In: Bateman, M. (ed.), *Handbook of Luminescence Dating*, 350-372, 2019.
- Kreutzer, S., Burow, C., Dietze, M., Fuchs, M.C., Schmidt, C., Fischer, M. and Friedrich, J.: Luminescence: Comprehensive Luminescence Dating Data Analysis, R package version 0.9.0.87, <https://CRAN.R-project.org/package=Luminescence>, 2019.
- 610 Lario, J., Zazo, C., Goy, J.L., Silva, P.G., Bardaji, T., Cabero, A. and Dabrio, C.J.: Holocene palaeotsunami catalogue of SW Iberia, *Quaternary International*, 242, 196-200, 2011.



- 615 Lehmann, B., Valla, P.G., King, G.E. and Herman, F.: Investigation of OSL surface exposure dating to reconstruct post-LIA glacier fluctuations in the French Alps (Mer de Glace, Mont Blanc massif), *Quaternary Geochronology*, 44, 63-74, 2018.
- Lehmann, B., Herman, F., Valla, P.G., King, G.E. and Biswas, R.H.: Evaluating post-glacial bedrock erosion and surface exposure duration by coupling in situ optically stimulated luminescence and  $^{10}\text{Be}$  dating, *Earth Surface Dynamics*, 7, 633-662, 2019.
- 620 Lehmann, B., Herman, F., Valla, P.G., King, G.E., Biswas, R.H., Ivy-Ochs, S., Steinemann, O. and Christl, M.: Postglacial erosion of bedrock surfaces and deglaciation timing: New insights from the Mont Blanc massif (western Alps), *Geology*, 48, 139-144, 2019.
- May, S.M., Engel, M., Brill, D., Cuadra, C., Lagmay, A.M.F., Santiago, J., Suarez, J.K., Reyes, M. and Brückner, H.: Block and boulder transport in Eastern Samar (Philippines) during Supertyphoon Haiyan, *Earth Surface Dynamics*, 3, 543-558, 2015.
- 625 Medina, F., Mhammdi, N., Chiguer, A., Akil, M. and Jaaidi, E.B.: The Rabat and Larache boulder fields; new examples of high-energy deposits related to storms and tsunami waves in north-western Morocco, *Natural Hazards*, 59, 725-747, 2011.
- Meyer, M.C., Gliganic, L.A., Jain, M., Sohpati, R. and Schmidmair, D.: Lithological controls on light penetration into rock surfaces – Implications for OSL and IRSL surface exposure dating, *Radiation Measurements*, 120, 298-304, 2018.
- 630 Mhammdi, N., Medina, F., Kelletat, D., Ahmamou, M. and Aloussi, L.: Large boulders along the Rabat coast (Morocco); possible emplacement by the November 1st, 1755 A.D. tsunami, *Science of Tsunami Hazards*, 27, 17-30, 2008.
- 635 Mhammdi, N., Medina, F., Belkhat, Z., El Aoula, R., Geawahri, M. and Chiguer, A.: Marine storms along the Moroccan Atlantic coast: An underrated natural hazard? *Journal of African Earth Sciences*, 163, 103730, [doi:10.1016/j.jafrearsci.2019.103730](https://doi.org/10.1016/j.jafrearsci.2019.103730), 2020.
- Moses, C., Robinson, D., and Barlow, J.: Methods for measuring rock surface weathering and erosion: A critical review. *Earth-Science Reviews*, 135, 141-161, 2014.
- 640 Mottershead, D.: Rates and patterns of bedrock denudation by coastal salt spray weathering: A seven-year record, *Earth Surface Processes and Landforms*, 14, 383-398, 1989.
- Murray, A.S. and Wintle, A.G.: The single aliquot regenerative dose protocol: potential for improvements in reliability, *Radiation Measurements*, 37, 377-381, 2003.
- Nandasena, N.A.K., Paris, R. and Tanaka, N.: Reassessment of hydrodynamic equations: Minimum flow velocity to initiate boulder transport by high energy events (storms, tsunamis), *Marine Geology*, 281, 70-84, 2011.
- 645 Nicholls, R.J., Brown, S., Goodwin, P., Wahl, T., Lowe, J., Solan, M., Godbold, J.A., Haigh, I.D., Lincke, D., Hinkel, J., Wolff, C. and Merken, J.: Stabilization of global temperature at 1.5 °C and 2.0 °C: implications for coastal areas, *Philosophical Transactions of the Royal Society A*, 376, [doi:10.1098/rsta.2016.0448](https://doi.org/10.1098/rsta.2016.0448), 2018.
- NOAA: Historical Hurricane Tracks, <https://coast.noaa.gov/hurricanes/> (last access September 2019), 2019.
- 650 Oliveira, M.A., Llop, E., Andrade, C., Branquinho, C., Goble, R., Queiroz, S., Freitas, M.C. and Pinho, P.: Estimating the age and mechanism of boulder transport related with extreme waves using lichenometry, *Progress in Physical Geography*, <https://doi.org/10.1177/0309133320927629>, 2020.
- Ou, X.J., Roberts, H.M., Duller, G.A.T., Dunn, M.D. and Perkins, W.T.: Attenuation of light in different rock types and implications for rock surface luminescence dating, *Radiation Measurements*, 120, 305-311, 2018.

- 655 Paris, R., Naylor, L.A. and Stephenson, W.: Boulders as a signature of storms on rock coasts, *Marine Geology*, 283, 1-11, 2011.
- Portenga, E.W. and Bierman, P.R.: Understanding Earth's eroding surface with  $^{10}\text{Be}$ . *GSA Today*, 21(8), 4-10, 2011.
- Rades, E., Sohbaty, R., Lüthgens, C., Jain, M. and Murray, A.S.: First luminescence-depth profiles from boulders  
660 from moraine deposits: Insights into glaciation chronology and transport dynamics in Malta valley, Austria, *Radiation Measurements*, 120, 281-289, 2018.
- Ramalho, R., Winckler, G., Madeira, J., Helfrich, G., Hipolito, A., Quartau, R., Adena, K. and Schaefer, J.M.: Hazard potential of volcanic flank collapses raised by new megatsunami evidence, *Science Advances*, 1, doi:10.1126/sciadv.1500456, 2015.
- 665 Ramalho, R., Omira, R., El Moussaoui, S., Baptista, M.A. and Zaghoul, M.N.: Tsunami-induced morphological change – A model-based impact assessment of the 1755 tsunami in NE Atlantic from the Morocco coast, *Geomorphology*, 319, 78-91, 2018.
- Reading University: Extratropical Cyclone Atlas, <http://www.met.rdg.ac.uk/~storms/cgi-bin/storms/storms.cgi>, last access: September 2019, 2019.
- 670 Renou, C., Lesne, O., Mangin, A., Rouffi, F., Atillah, A., El Hadani, D. and Moudni, H.: Tsunami hazard assessment in the coastal area of Rabat and Sale, Morocco, *Natural Hazards and Earth System Sciences*, 11, 2181-2191, 2011.
- Rixhon, G., May, S. M., Engel, M., Mechernich, S., Schroeder-Ritzrau, A., Frank, N., Fohlmeister, J., Boulvain, F., Dunai, T. and Brückner, H.: Multiple dating approach ( $^{14}\text{C}$ ,  $^{230}\text{Th}/\text{U}$  and  $^{36}\text{Cl}$ ) of tsunami-transported reef-top  
675 boulders on Bonaire (Leeward Antilles) – current achievements and challenges, *Marine Geology*, 396, 100–113, doi:10.1016/j.margeo.2017.03.007, 2017.
- Sato, T., Nakamura, N., Goto, K., Kumagai, Y., Nagahama, H. and Minoura, K.: Paleomagnetism reveals the emplacement age of tsunamigenic coral boulders on Ishigaki Island, Japan, *Geology*, 42, 603–606, doi:10.1130/G35366.1, 2014.
- 680 Scheffers, A. and Kelletat, D.: Tsunami relics on the coastal landscape west of Lisbon, Portugal, *Science of Tsunami Hazards*, 23, 3-16, 2005.
- Sellwood, E.L., Guralnik, B., Kook, M., Prasad, A.K., Sohbaty, R., Hippe, K., Wallinga, J. and Jain, M.: Optical bleaching front in bedrock revealed by spatially-resolved infrared photoluminescence, *Scientific Reports*, 9, 2611, doi:10.1038/s41598-019-38815-0, 2019.
- 685 Simms, A.R., DeWitt, R., Kouremenos, P. and Drewry, A.M.: A new approach to reconstructing sea levels in Antarctica using optically stimulated luminescence of cobble surfaces, *Quaternary Geochronology*, 6, 50-60, 2011.
- Small, E.E., Anderson, R.S., Repka, J. and Finkel, R.: Erosion rates of alpine bedrock summit surfaces deduced from in situ  $^{10}\text{Be}$  and  $^{26}\text{Al}$ . *Earth and Planetary Science Letters*, 150, 413-425.
- Sohbaty, R., Murray, A.S., Jain, M., Buylaert, J.P. and Thomsen, K.: Investigating the resetting of OSL signals in  
690 rock surfaces, *Geochronometria*, 38, 249-258, 2011.
- Sohbaty, R., Murray, A.S., Chapot, M.S., Jain, M. and Pederson, J.: Optically stimulated luminescence (OSL) as a chronometer for surface exposure dating, *Journal of Geophysical Research*, 117, 1-7, 2012.
- Sohbaty, R., Murray, A.S., Porat, N., Jain, M. and Avner, U.: Age of a prehistoric “Rodedian” cult site constrained by sediment and rock surface luminescence dating techniques, *Quaternary Geochronology*, 30, 90-99, 2015.

- 695 Sohbati, R., Liu, J., Jain, M., Murray, A.S., Egholm, D., Paris, R. and Guralnik, B.: Centennial- to millennial-scale hard rock erosion rates deduced from luminescence-depth profiles, *Earth and Planetary Science Letters*, 493, 218-230, 2018.
- Stephenson, W.J. and Finlayson, B.L.: Measuring erosion with the micro-erosion meter—Contributions to understanding landform evolution. *Earth-Science Reviews*, 95, 53-62, 2009.
- 700 Wallinga, J.: Optically stimulated luminescence dating of fluvial deposits: a review, *Boreas*, 31, 303-322, 2002.
- Whelan, F. and Kelletat, D.: Boulder deposits on the southern Spanish Atlantic Coast: Possible evidence for the 1755 AD Lisbon Tsunami? *Science of Tsunami Hazards*, 23, 25-38, 2005.
- Yu, K.F., Zhao, J.X., Shi, Q. and Meng, Q.S.: Reconstruction of storm/tsunami records over the last 4000 years using transported coral blocks and lagoon sediments in the southern South China Sea, *Quaternary International*, 195, 128-137, 2009.
- 705 Zhao, J.X., Neil, D., Feng, Y.X., Yu, K.F. and Pandolfi, J.M.: High-precision U-series dating of very young cyclone-transported coral reef blocks from Heron and Wistari reefs, southern Great Barrier Reef, Australia, *Quaternary International*, 195, 122-127, 2009.
- Zitellini, N., Chierici, F., Sartori, R. and Torelli, L.: The tectonic source of the 1755 Lisbon earthquake and tsunami, *Annals of Geophysics*, 42, 49-55, 1999.
- 710

Figures and tables

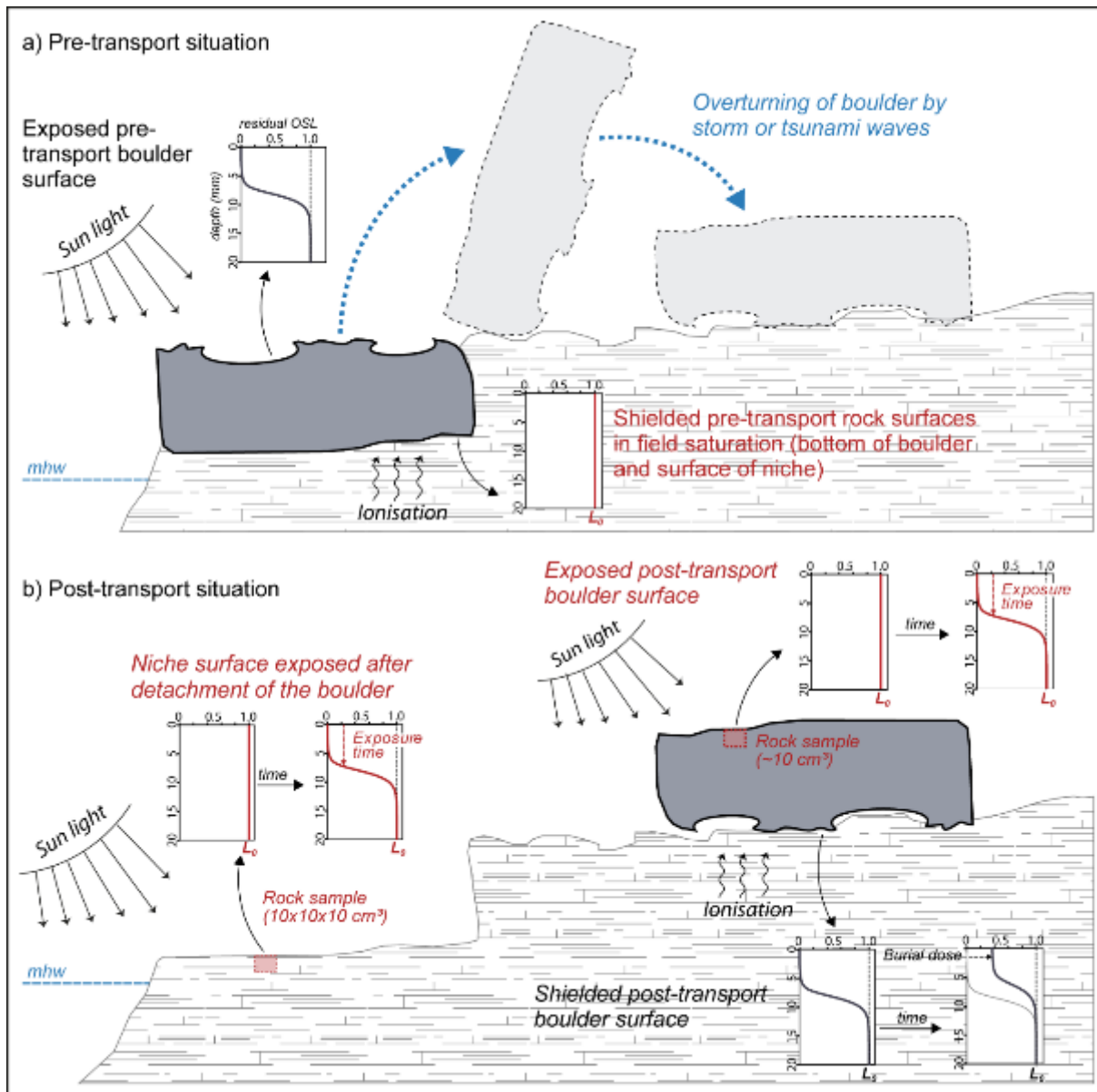
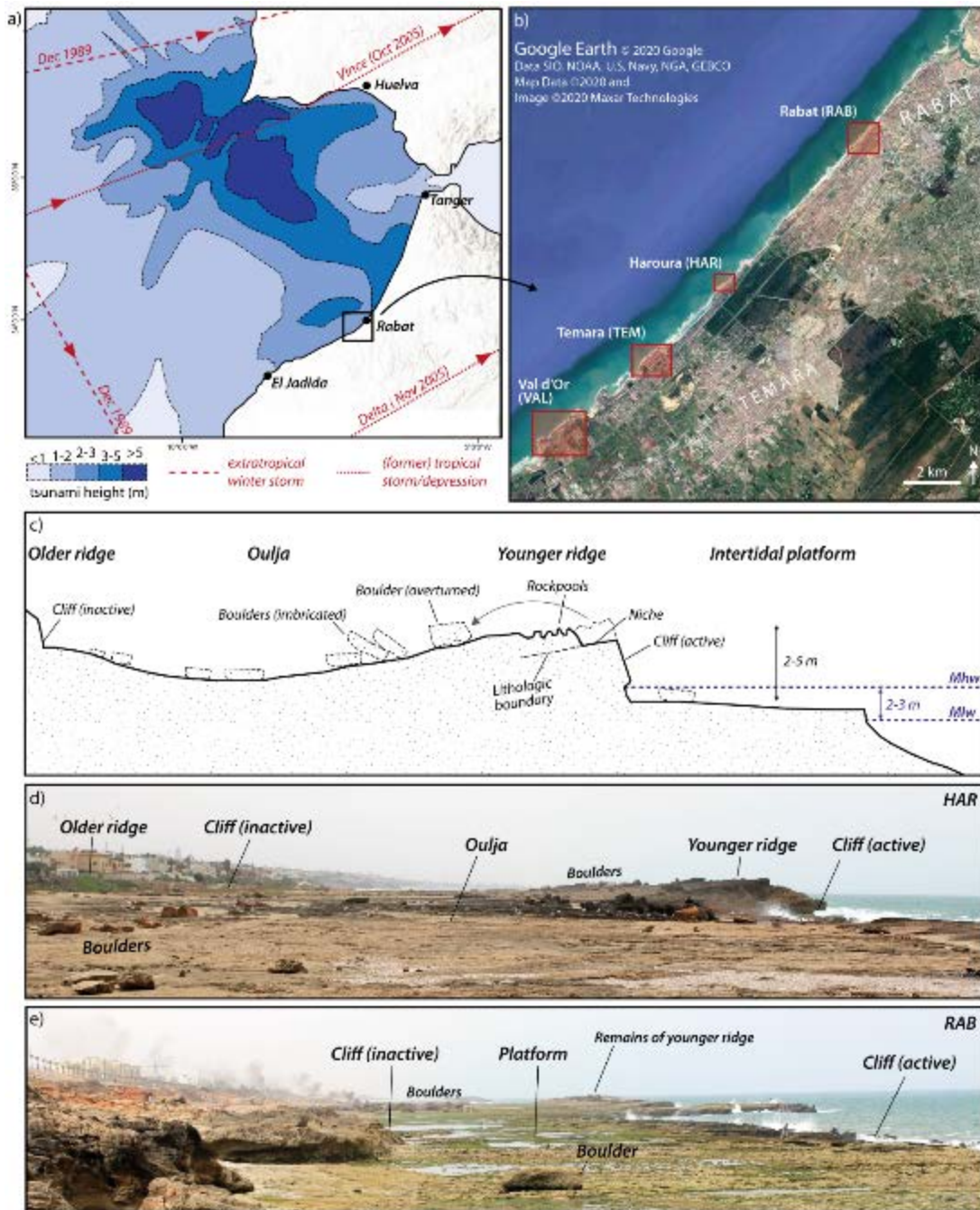


Fig. 1. Schematic model of OSL rock surface exposure dating applied to coastal boulders.



715 Fig. 2: Flooding hazard and geomorphological setting of the Rabat coast. a) Exposure of the Moroccan Atlantic coast to tsunamis and storms, including modelled wave heights for the 1755 Lisbon tsunami (Renou et al., 2009), tracks of former tropical storms crossing the area between 1851 and 2016 (NOAA, 2019), and extratropical winter storms in the period 1989-2009 (Reading University, 2019). b) The Rabat coast with the four study sites (based on Google Earth images). c) Schematic geomorphological cross section through the Rabat coast at Haroura (HAR, modified from Mhammdi et al., 2008). d) The coastal platform at Haroura as shown in c) (view towards Southwest). e) The coastal platform at Rabat (RAB, view towards Southwest). ©

720



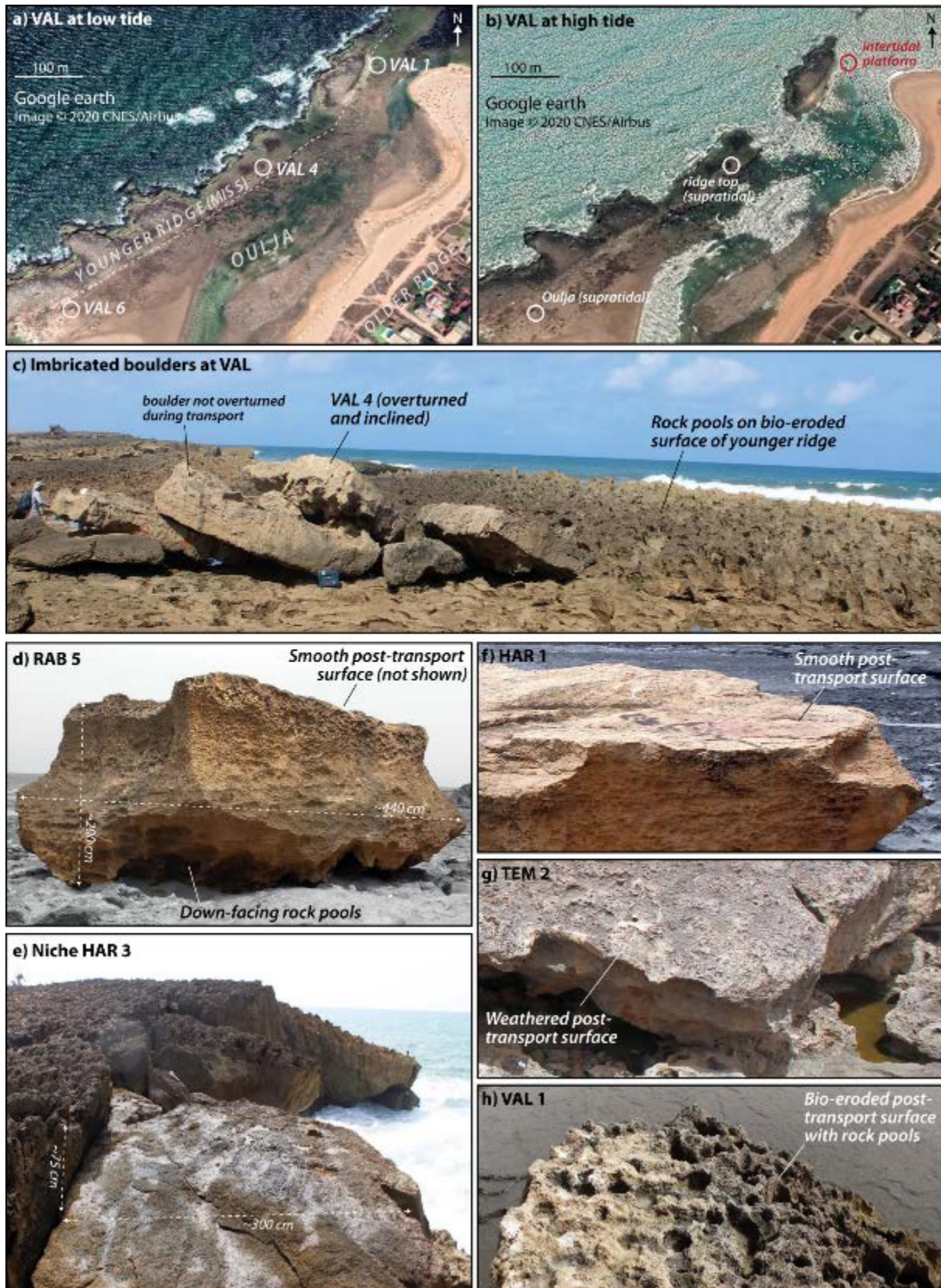
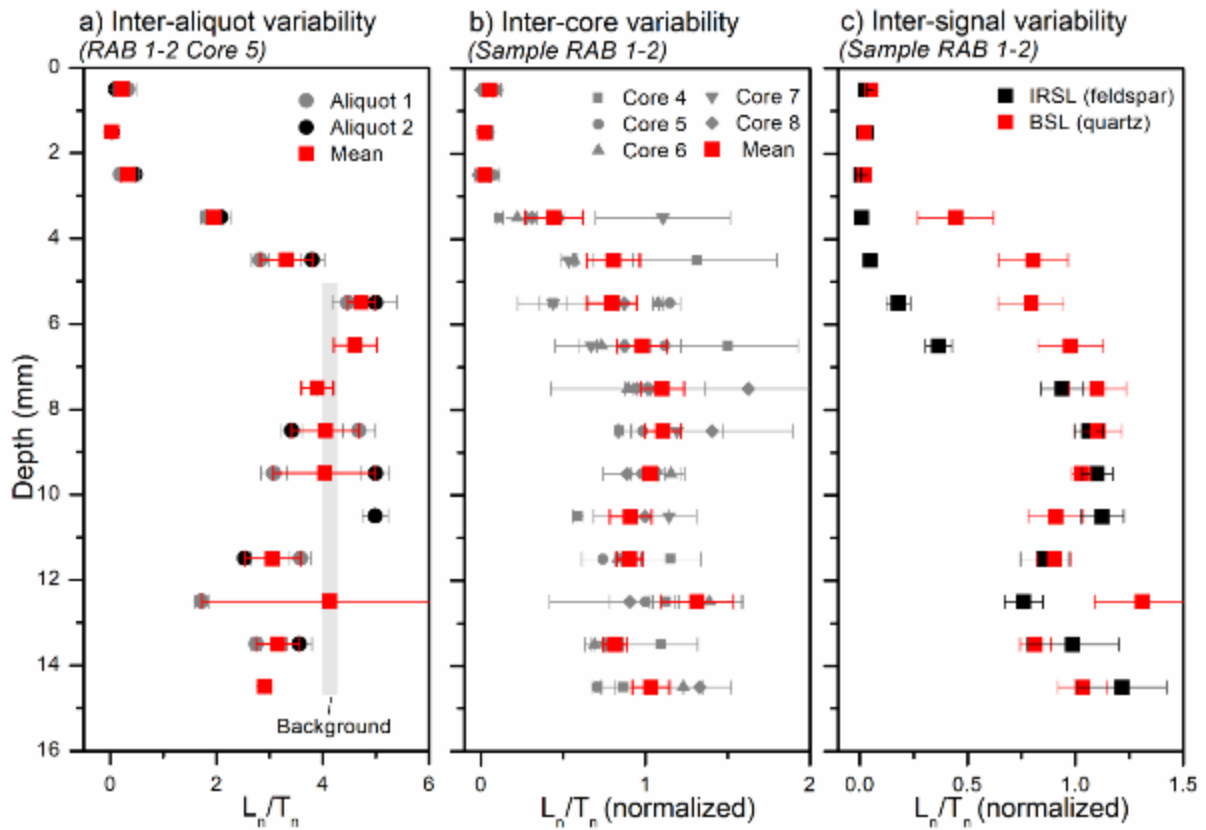
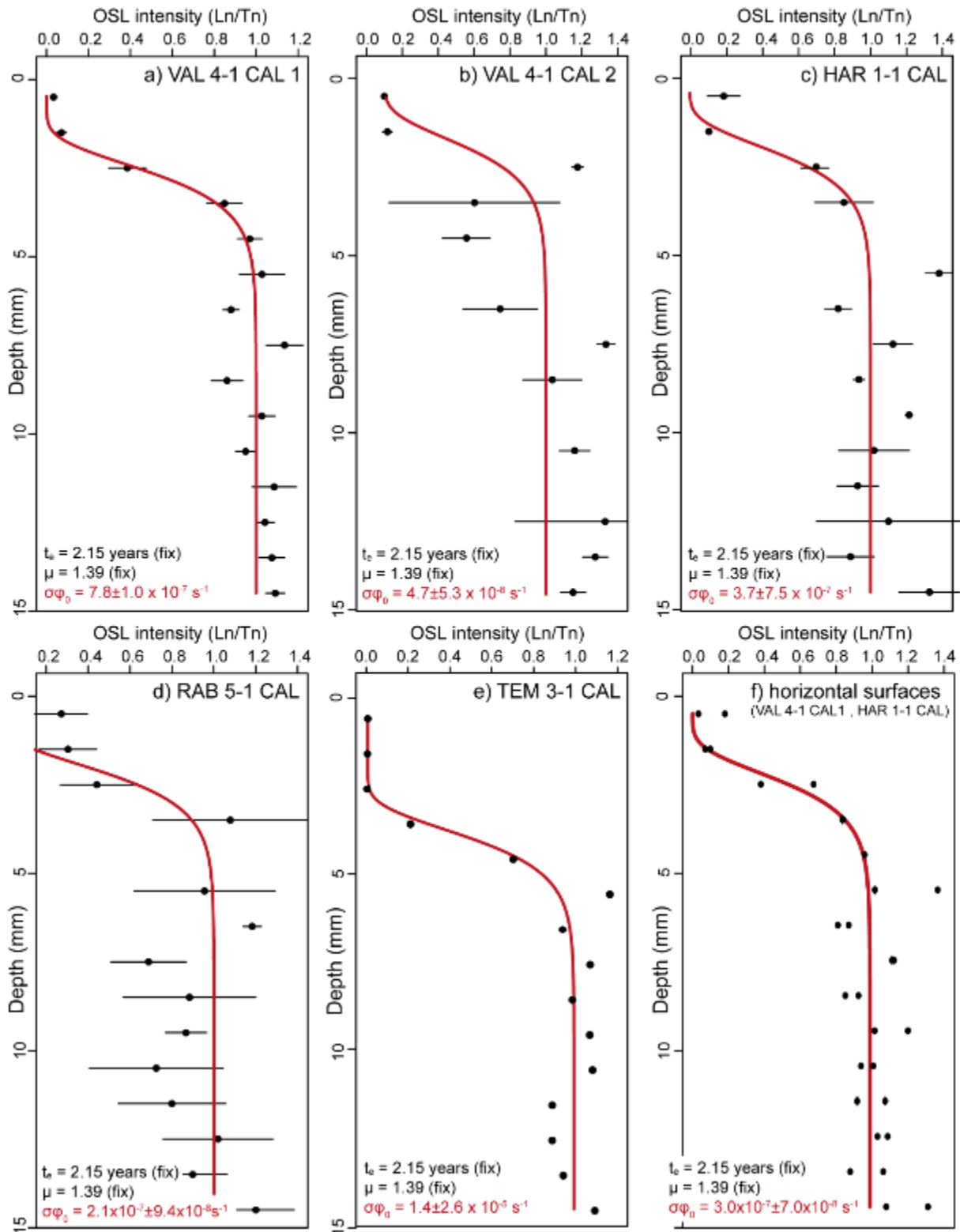


Fig. 3: Coastal boulders at the Rabat coast. Satellite images of Val d'Or taken at low tide (a) and high tide (b) illustrate different boulder settings on top of the younger ridge, within the Oulja and on the intertidal platform (Google Earth images from July 2018 and February 2016). c) Boulder VAL 4 as part of a stack of imbricated boulders in ridge top position. d) Down-facing rock pools of the former cliff surface at the bottom surface of RAB 5. e) Niche HAR 3 formed by detachment of the associated boulder. (f-h) Surface roughness of the sampled boulders varies from smooth (HAR 1), over slightly weathered (TEM 2), to rock-pool covered (VAL 1).



730 Fig. 4: Exemplary OSL signal-depth data for boulders from the Rabat coast (RAB 1-2). a) Inter-aliquot variations of post-IRSL-BSL signals in core 5 of sample RAB 1-2. b) Variability of post-IRSL-BSL signals from different cores of the sample. c) Comparison of quartz post-IRSL-BSL and feldspar IRSL signals measured in the same post-IRSL-BSL protocol (mean values based on 5 cores each).



735

Fig. 5: Fitting post-IRSL-BSL signal-depth data of calibration samples. Individual fitting of the five calibration samples (a-e), and joint fitting of calibration samples VAL 4-1 CAL 1 and HAR 1-1 CAL (VAL 4-1 CAL 2 and RAB 5-1 CAL are excluded due to the poor quality of their signal-depth data) to estimate a mutual  $\overline{\sigma\phi_0}$  value for all samples with flat surfaces (f). Fixed parameters are shown in black, calculated parameters in red (lower left corner of a-f).

740



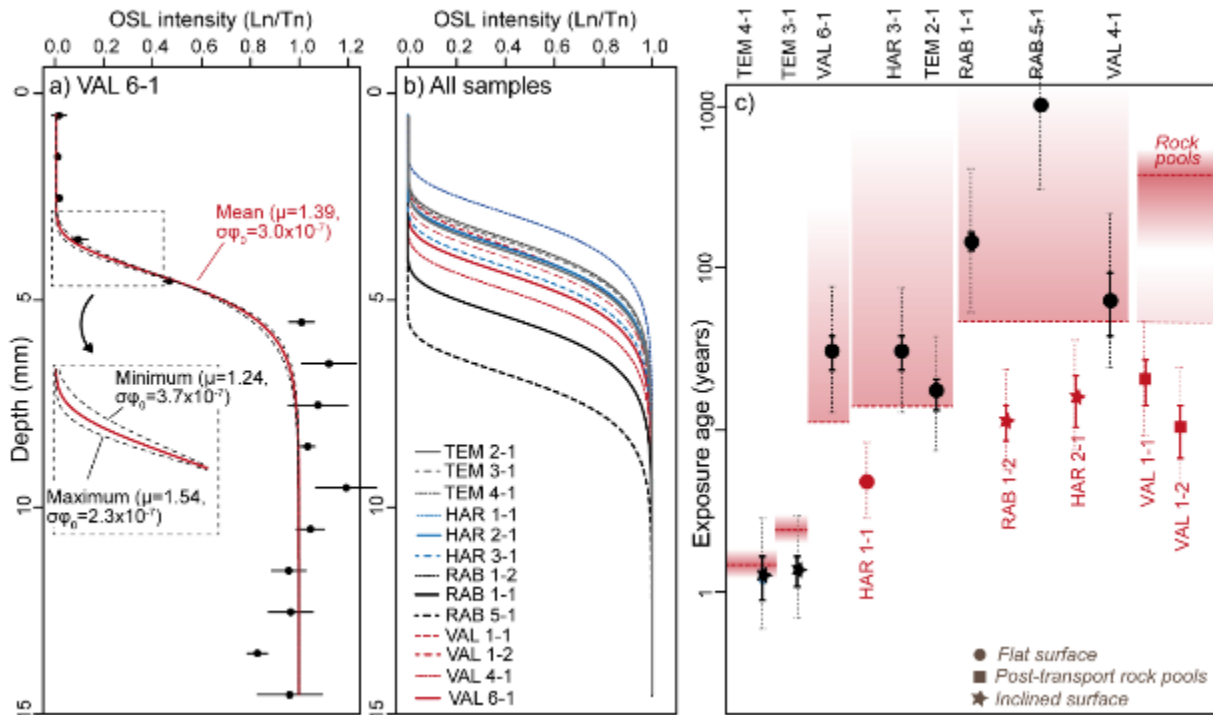
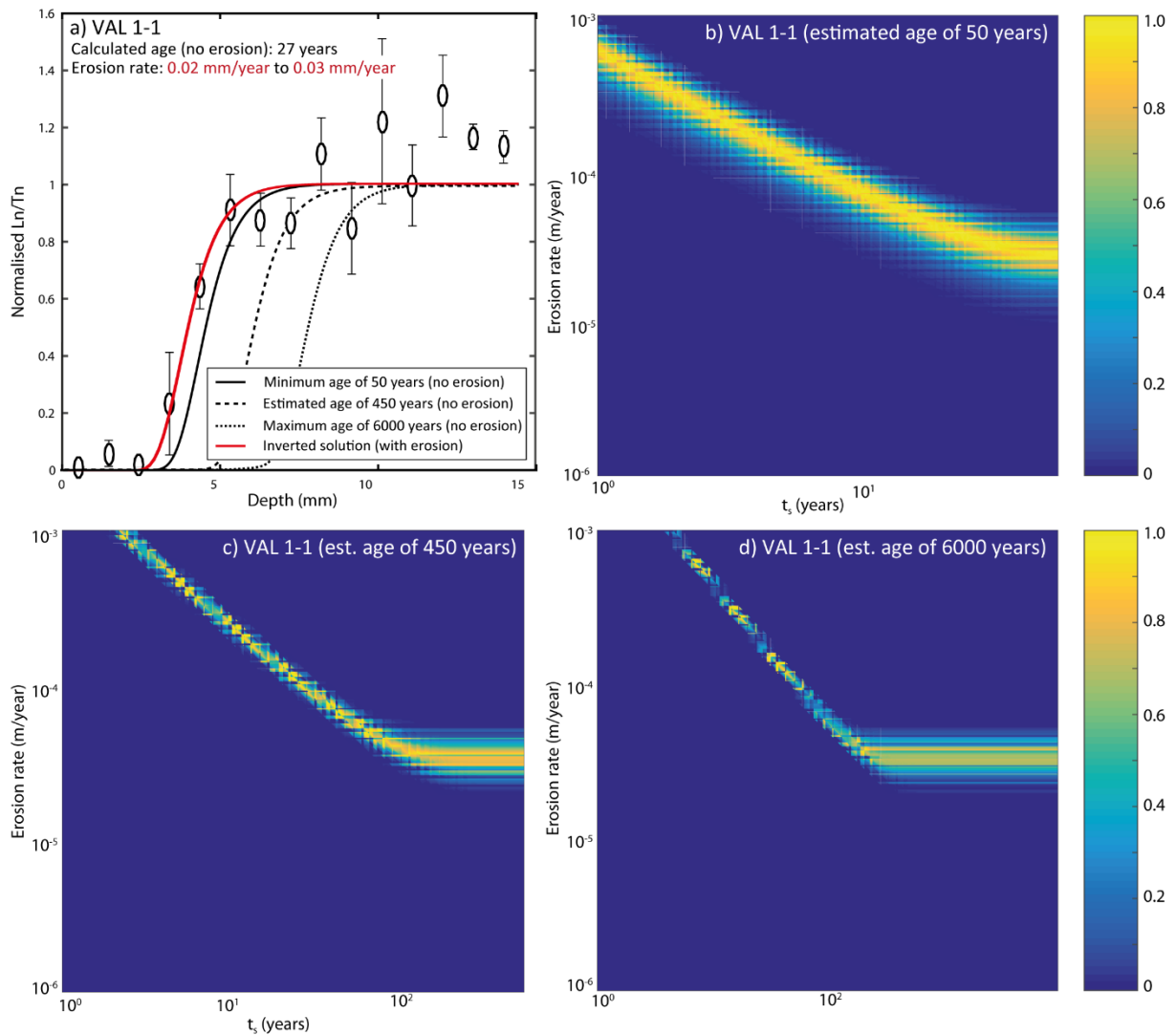


Fig. 6: Fitting of post-IRSL-BSL signal-depth data and comparison of OSL exposure ages with age control. a) Fitting of sample VAL 6-1 with fixed  $\mu$  (mutual value for all calcarenite samples in this study) and  $\overline{\sigma\varphi_0}$  (mutual value for horizontal sufaces. Fitting uncertainties due to the uncertainties of  $\mu$  and  $\overline{\sigma\varphi_0}$  are highlighted in the close up. b) Model fits for all targeted samples (based on mutual values for  $\mu$  and  $\overline{\sigma\varphi_0}$ ). c) Comparison of modelled exposure ages (symbols with error bars) and age control from satellite images, eyewitness observations and depth of post-transport rock pools (indicated by red shaded areas). Exposure ages in agreement with control ages are shown in black, those too young for the control ages in red.

745

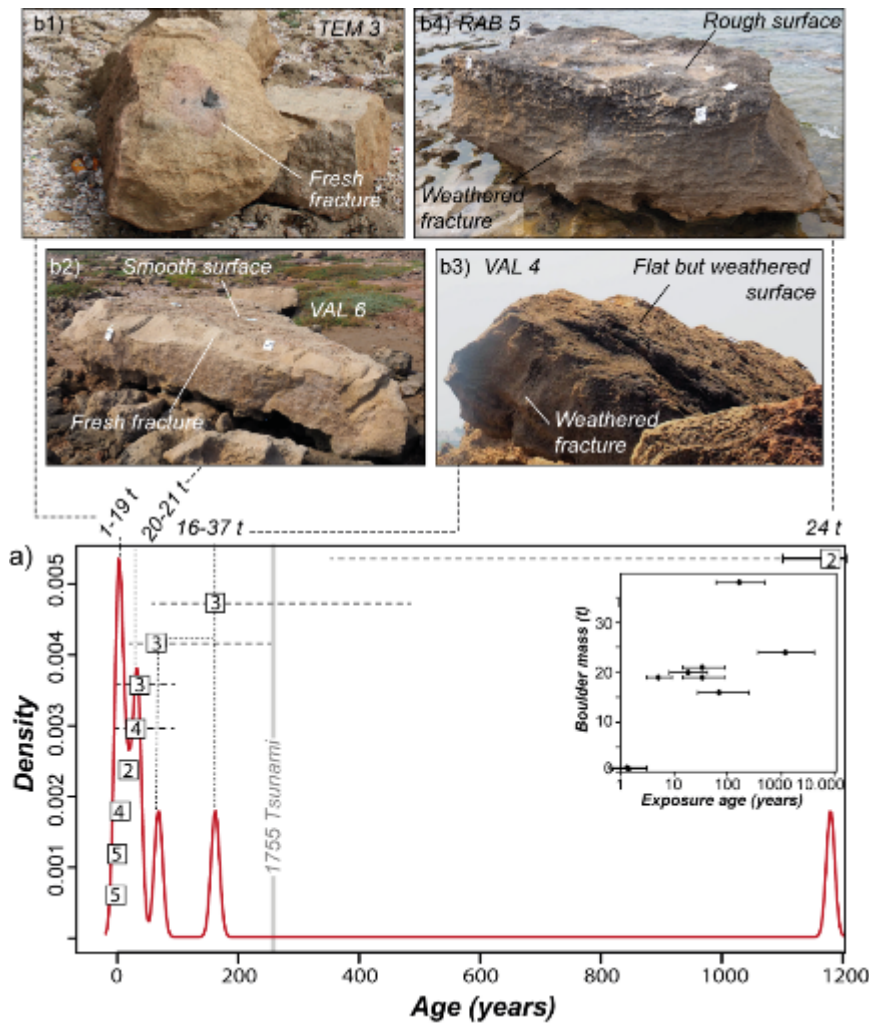
750

755



**Fig. 7: Inverse modelling of post-deposition erosion rates using the approach of Lehmann et al. (2019a). The effect of erosion on the OSL signal-depth profiles of sample VAL 1-1 was evaluated using the shared  $\mu$  and  $\overline{\sigma\phi_0}$  from Table 2 as model input (a) Erosion rates were estimated for assumed exposure ages equal to the minimum age (50 years, b), a realistic age estimate based on rock-pool depth (450 years, c), and the maximum age (6000 years, d). Since erosion rates are sensitive to changes of  $t_s$ , the erosion rates reported in a) are based on  $t_s$  values equal to the assumed exposure time (i.e. constant erosion rates during exposure).**

760



765

**Fig. 8:** Relative chronology of boulder transport. a) Exposure ages of all boulders that do not clearly underestimate the control ages presented as KDE plot (dotted error bars with consideration of  $\mu$  and  $\overline{\sigma\phi_0}$  uncertainties). The numbers in squares refer to the taphonomy classes described in the text and the caption of Table 1. Inset: Correlation between boulder mass and OSL rock surface exposure ages. b) Photographs documenting the taphonomy of boulders with different OSL rock surface exposure ages. Each photograph is correlated with a KDE peak in a) and associated boulder masses by dashed lines.

Boulder	Depositional setting			Boulder dimension			Sampled surface			Sample	
	Lat/Long (°)	Position	Group	Shape	Vol. (m <sup>3</sup> )	Density (g/m <sup>3</sup> )	Mass (t)	Ori-entation	Tapho-nomy		Dating
RAB 1	34.007964 -6.869395	Supratidal platform 2.7 m asl, 40 m from cliff	Single	Irregular	15.3	2.45	37.5	0° 25° SE	3	RAB 1-1 RAB 1-2	-
RAB 5	33.999778 -6.877759	Intertidal platform (surface above tides)	Single	Cubic	9.8	2.4	23.5	0°	2	RAB 5-1	RAB 5-1 CAL
HAR 1	33.953904 -6.927609	Oulja 2 m asl, 35 m from cliff	Single	Platy	8.2	2.3	18.9	0°	4	HAR 1-1	HAR 1-1 CAL**
HAR 2	33.953525 -6.928669	Top of younger ridge 4.5 m asl, 16 m from cliff	Imbricated	Platy	3.6	2.4	8.6	25° NW	4	HAR 2-1	-
HAR 3*	33.954182 -6.927901	Niche in active cliff (intertidal)	-	Platy	-	-	-	0°	3	HAR 3-1	-
TEM 2	33.927066 -6.961859	Top of younger ridge 4.2 m asl, 35 m from cliff	Single	Platy	8.3	2.4	19.9	0°	2	TEM 2-1	-
TEM 3	33.926842 -6.961915	Top of younger ridge 4.5 m asl, 38 m from cliff	Single	Irregular	0.3	2.4	0.7	25° W	5	TEM 3-1	TEM 3-1 CAL
TEM 4*	33.927949 -6.960674	Niche in active cliff (supratidal)	-	Platy	-	-	-	25° W	5	TEM 4-1	-
VAL 1	33.909435 -6.989803	Intertidal platform (surface above tides)	Single	Cubic	26.2	2.25	59.0	10° SE	1	VAL 1-1 VAL 1-2	-
VAL 4	33.907733 -6.991505	Top of younger ridge 3 m asl, 25 m from cliff	Imbricated	Platy	7.3	2.2	16.1	0°	3	VAL 4-1 VAL 4-1 CAL2**	VAL 4-1 CAL1 VAL 4-1 CAL2**
VAL 6	33.906084 -6.993316	Oulja 2.5 m asl, 80 m from cliff	Single	Platy	8.9	2.3	20.5	0°	4	VAL 6-1	-

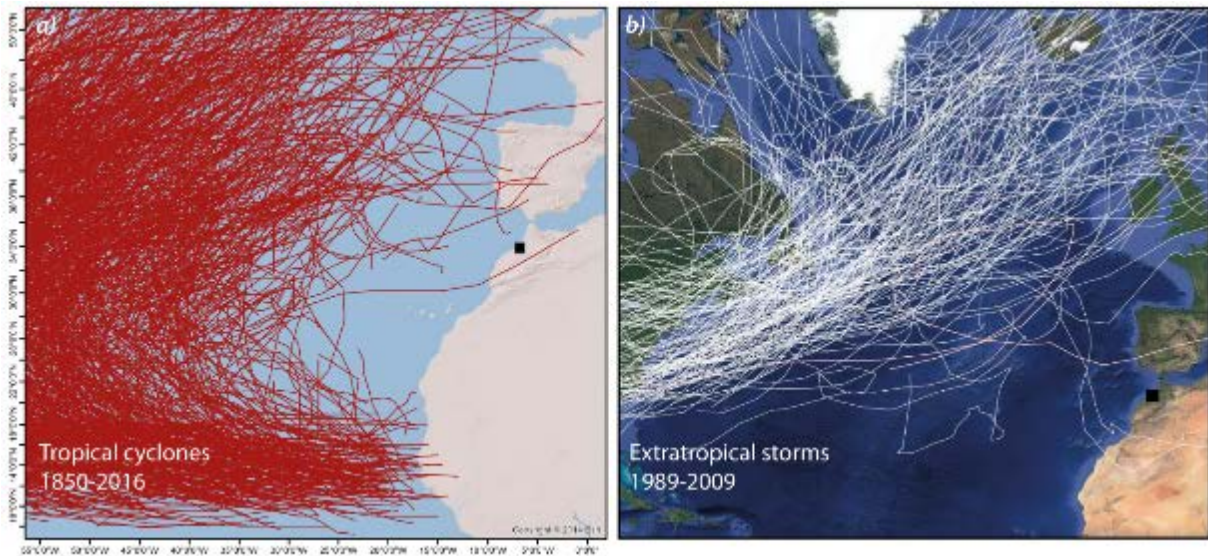
Tab. 1: Characteristics of dated boulders. Lat/Long = Latitude/Longitude, \* = niche at coastal cliff, \*\* = calibration sample on nearby roof top, taphonomy classes 1 to 5 with 1 – post-transport rock pools, 2 – rough post-transport surface covered with lichens/algae, 3 – smooth post-transport surface with scarce lichen/algae cover, 4 – smooth post-transport surface without/hardly any lichens/algae and fresh fractures, and 5 – fresh post-transport surfaces and fractures.

Sample	Cat.	Indiv. $\mu$ (mm <sup>-1</sup> )	Shared $\mu$ (mm <sup>-1</sup> )	Indiv. $\sigma\phi_0$ (s <sup>-1</sup> )	Shared $\sigma\phi_0$ (s <sup>-1</sup> )	$t_{\text{exp}}$ mean (yrs)	$t_{\text{exp}}$ Min- Max (yrs)	$t_{\text{age}}$ control (yrs)
RAB 5-1 CAL		0.73±0.35	-	2.1x10 <sup>7</sup> ±9.4x10 <sup>8</sup>	-	<b>2.15 (fix)</b>	-	2.15
VAL 4-1 CAL II		0.76±0.53	-	4.7x10 <sup>8</sup> ±5.3x10 <sup>8</sup>	-	<b>2.15 (fix)</b>	-	2.15
Calibration								
HAR 1-1 CAL		1.65±0.55		3.7x10 <sup>7</sup> ±7.5x10 <sup>7</sup>		<b>2.15 (fix)</b>	-	2.15
VAL 4-1 CAL I		1.62±0.50		7.8x10 <sup>7</sup> ±1.0x10 <sup>6</sup>	<b>3.0x10<sup>-7</sup>±7.0x10<sup>-8</sup></b>	<b>2.15 (fix)</b>	-	2.15
TEM 3-1 CAL		1.83±0.47		1.4x10 <sup>-5</sup> ±2.6x10 <sup>5</sup>	<b>2.6x10<sup>-6</sup>±5.3x10<sup>-7</sup></b>	<b>2.15 (fix)</b>	-	2.15
RAB 1-1		2.71±3.99		-	<b>3.0x10<sup>-7</sup>±7.0x10<sup>-8</sup> (fix)</b>	<b>162±21</b>	60-486	>50
RAB 1-2		1.17±0.39		-	<b>3.0x10<sup>-7</sup>±7.0x10<sup>-8</sup> (fix)</b>	<b>12±3</b>	6-26	>50
RAB 5-1		0.51±0.18		-	<b>3.0x10<sup>-7</sup>±7.0x10<sup>-8</sup> (fix)</b>	<b>1180±158</b>	360-4110	>50
HAR 1-1		1.97±0.35		-	<b>3.0x10<sup>-7</sup>±7.0x10<sup>-8</sup> (fix)</b>	<b>4.8±0.2</b>	3-9	>15
HAR 2-1		1.16±0.53	<b>1.39±0.15 (fix)</b>	-	<b>3.0x10<sup>-7</sup>±7.0x10<sup>-8</sup> (fix)</b>	<b>17±6</b>	8-40	>50
HAR 3-1		1.03±0.27		-	<b>3.0x10<sup>-7</sup>±7.0x10<sup>-8</sup> (fix)</b>	<b>33±8</b>	14-85	>15
TEM 2-1		1.02±0.24		-	<b>3.0x10<sup>-7</sup>±7.0x10<sup>-8</sup> (fix)</b>	<b>18±4</b>	8-42	>15
TEM 3-1		2.17±0.99		-	<b>2.6x10<sup>-6</sup>±5.3x10<sup>-7</sup> (fix)</b>	<b>1.4±0.3</b>	0.7-3.1	~2.5
TEM 4-1		0.79±0.24		-	<b>2.6x10<sup>-6</sup>±5.3x10<sup>-7</sup> (fix)</b>	<b>1.3±0.4</b>	0.6-3	~1.5
VAL 1-1		1.10±0.40		-	<b>3.0x10<sup>-7</sup>±7.0x10<sup>-8</sup> (fix)</b>	<b>22±7</b>	10-52	>50 ~450
VAL 1-2		1.01±0.38		-	<b>3.0x10<sup>-7</sup>±7.0x10<sup>-8</sup> (fix)</b>	<b>11±4</b>	5-27	>50 ~450
VAL 4-1		0.87±0.31		-	<b>3.0x10<sup>-7</sup>±7.0x10<sup>-8</sup> (fix)</b>	<b>68±24</b>	27-250	>50
VAL 6-1		3.43±3.77		-	<b>3.0x10<sup>-7</sup>±7.0x10<sup>-8</sup> (fix)</b>	<b>33±8</b>	14-87	>12
Dating								

Tab. 2: Summary of model parameters for all calibration and dating samples. Bold numbers indicate values that were eventually used for calibration and dating. Cat. = sample category, Indiv. = individual,  $t_{\text{exp}}$  mean = exposure ages based on fixed  $\mu$  and  $\sigma\phi_0$  values without their uncertainties,  $t_{\text{exp}}$  Min-Max = exposure age range with consideration of  $\mu$  and  $\sigma\phi_0$  uncertainties.



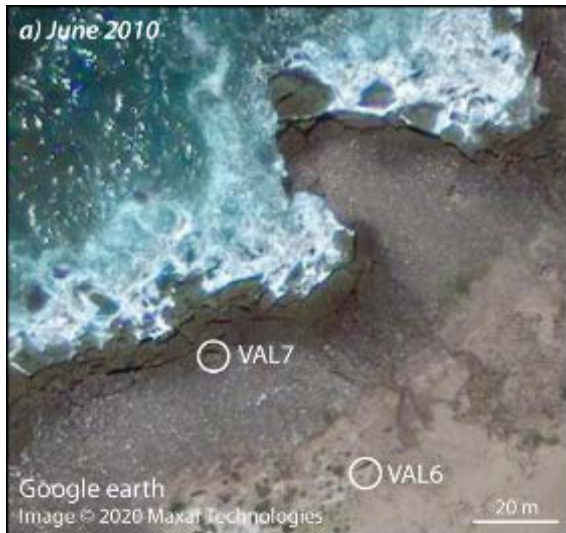
## Appendices



**Fig. A1: Storm hazard at the Rabat coast.** a) Tracks of historical (1850-2016) tropical storms in the North Atlantic (NOAA, 2019); even aged tropical cyclones (tropical depressions) rarely strike the coastlines of the eastern Atlantic as far south as Spain or Morocco. b) Tracks of the 200 strongest extratropical storms in the North Atlantic 1989-2009 (Atlas of extratropical storms, University of Reading, 2019); most winter storms cross northern Europe, storm tracks as far south as Spain or Morocco are very rare.



**Fig. A2: Storm waves and coastal flooding at Haroura.** a) During normal wave conditions, all sampled boulders are located above tide level. b) Flooding of the Oulja and local wave overwash reaching up to 50 m landward of the shoreline during a winter storm in December 2018. Both scenes are based on Google Earth images.

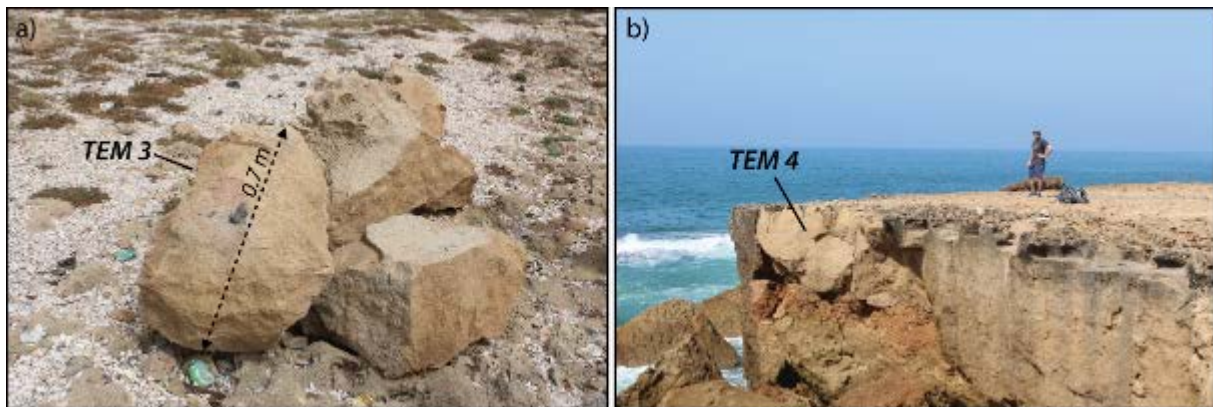


**Fig. A3: Storm transport of boulders recorded on satellite images (Google Earth). a) Positions of boulders VAL 6 and 7 in June 2010. b) Positions of the same boulders in February 2014. While VAL 6 remains stable, pushed by storm waves VAL 7 has moved for about 15 m perpendicular to the shoreline. c) After relocation in February 2014, both boulders remained in stable positions until July 2018. All scenes are based on Google Earth images.**



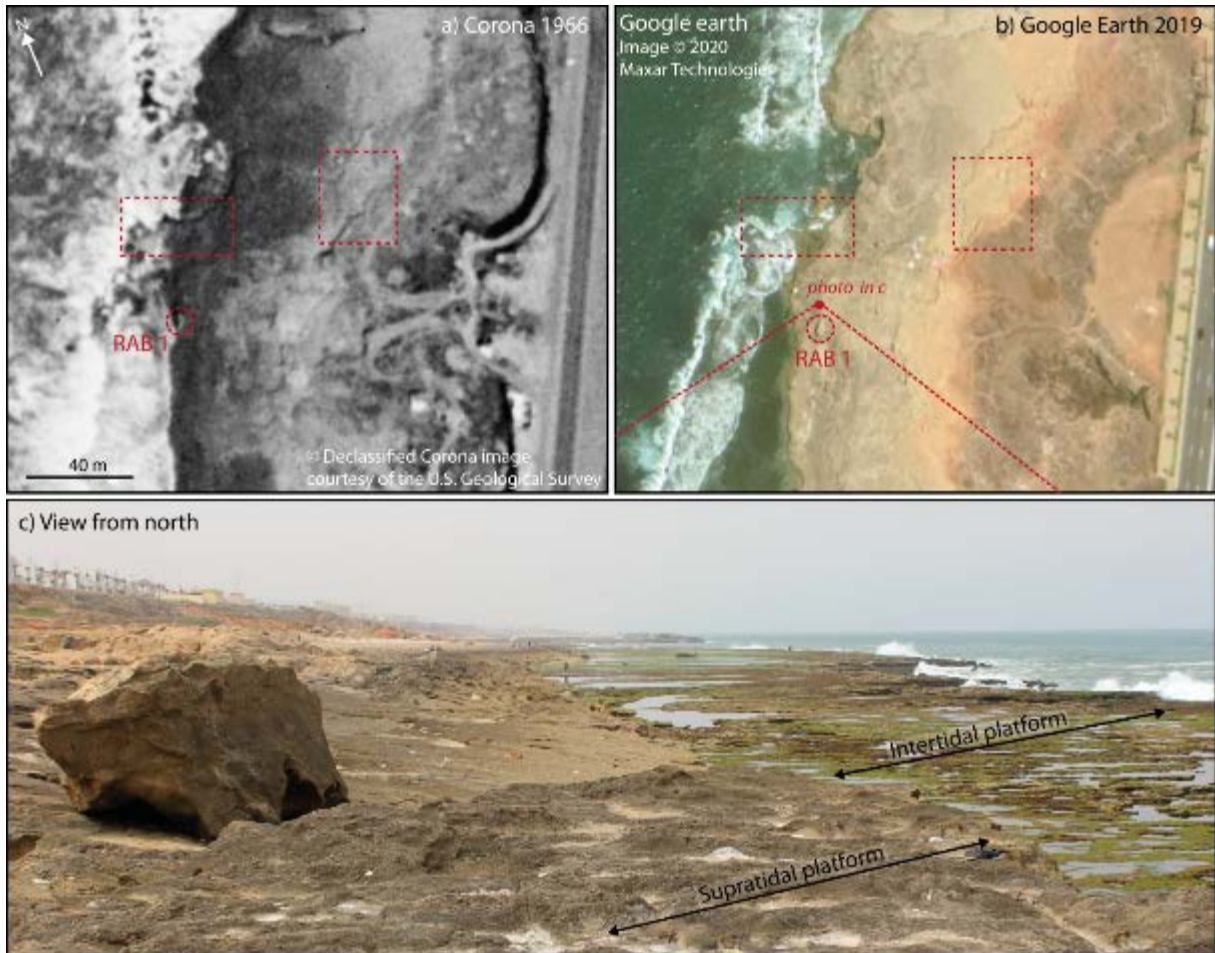
<i>Boulder/Niche</i>	<i>Corona 1966</i>	<i>Google Earth</i>	<i>Observation</i>	<i>Age (years)</i>
RAB 1	at present position or slightly seaward but already overturned	at present pos. in 2001	-	>50
RAB 5	at present position	at present pos. in 2001	-	>50
HAR 1	-	at present pos. in 2001	-	>15
HAR 2	at present position, a-axis slightly turned	at present pos. in 2001	-	>50
HAR 3	-	at present pos. in 2001	-	>15
TEM 2	-	at present pos. in 2001	-	>15
TEM 3	-	-	deposited in Feb 2014	~2.5
TEM 4	-	-	formed between Jul 2016 and Sept 2018	~1.5
VAL 1	at present position	at present pos. in 2004	Up to 45 cm deep post-transport rock pools	>50 ~450*
VAL 4	at present position	at present pos. in 2004	-	>50
VAL 6	-	at present pos. in 2004	-	>12

**Tab. A1:** Summary of age control for boulder movement and niche formation in the form of satellite images and own observations. pos. = position, - = no clear evidence. \*Minimum age estimate based on the depth of post-depositional rock pools and empirical rates of bio-erosion in the order of 1 mm/year (Kelletat, 2013).



**Fig. A4:** Boulder TEM 3 (a) was transported to its onshore location during winter storm Hercules/Christina in February 2014 as reported by local residents. Niche TEM 4 was formed between the field surveys in Juli 2016 and September 2018, most likely by a winter storm in 2017.



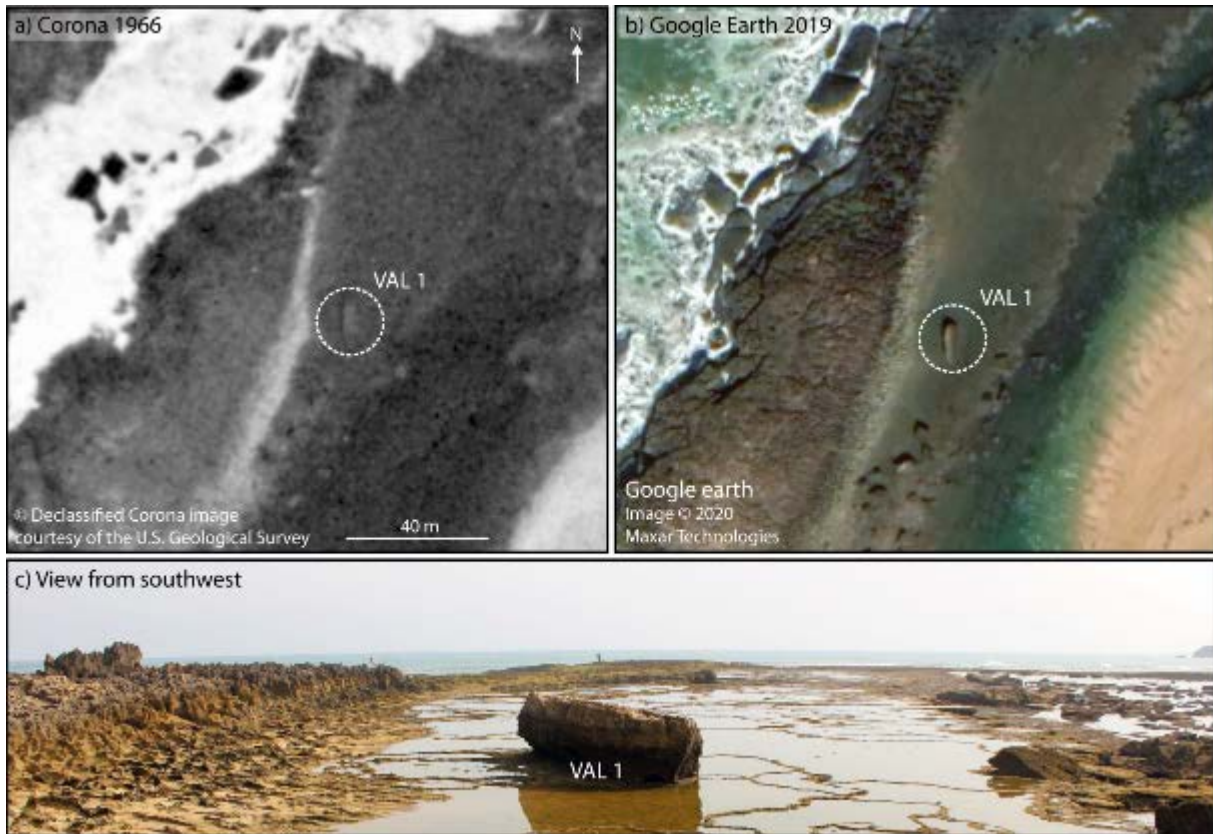


**Fig. A5: Boulder RAB 1.** a) RAB 1 (red circle) can be located on the 1966 Corona satellite image. Compared to its present position on the 2019 Google Earth image (b) it might have been pushed a few meters landward but there is no indication of overturning (red rectangles mark features clearly identified on both images for better orientation). c) View towards south with boulder RAB 1 lying on the slope of the supratidal platform (photography July 2016).

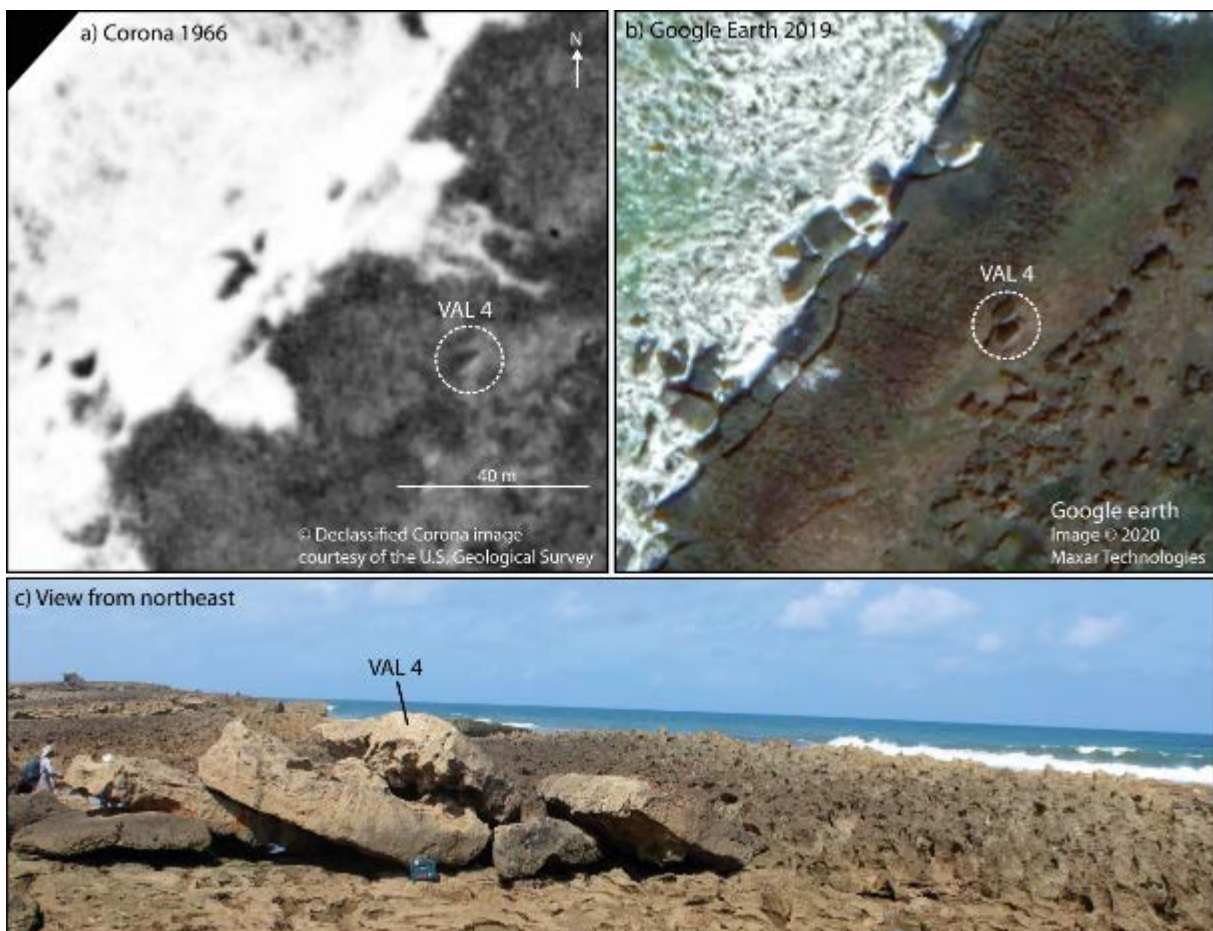


**Fig. A6: Boulder RAB 5.** a) RAB 5 (white/red circle) can be located on the 1966 Corona satellite image. It has not changed compared to its present position on the 2019 Google Earth image (b).

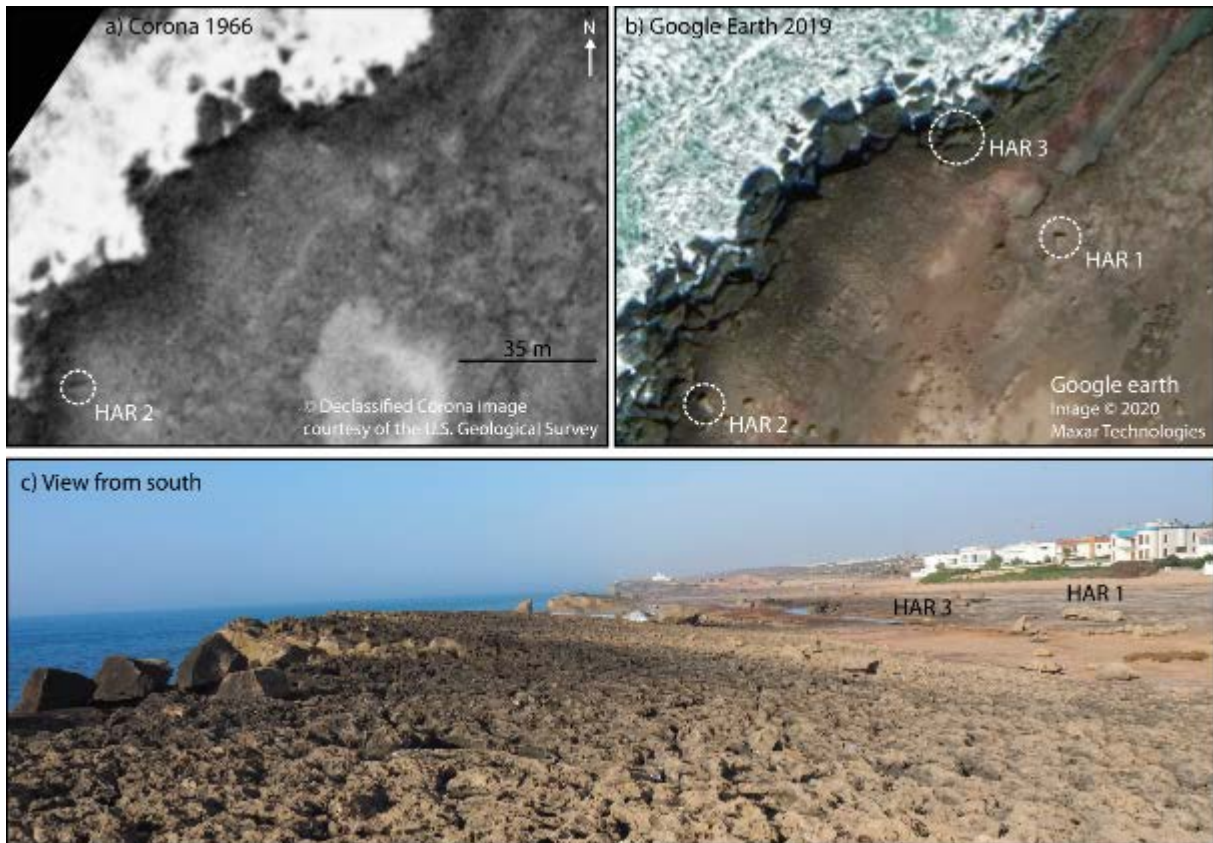




**Fig. A7: Boulder VAL 1.** a) VAL 1 (white circle) can be located on the 1966 Corona satellite image. It has not changed compared to its present position on the 2019 Google Earth image (b). c) View towards northeast with boulder VAL 1 lying on the intertidal platform behind the youngest ridge (photography July 2016).



**Fig. A8: Boulder VAL 4.** a) VAL 4 (white circle) can be located on the 1966 Corona satellite image. It has not changed compared to its present position on the 2019 Google Earth image (b). c) View towards southwest with boulder VAL 4 lying on the youngest ridge (photography July 2016).



**Fig. A9: Boulders at site HAR.** a) Boulder HAR 2 (white circle) can be located on the 1966 Corona satellite image. It slightly rotated along its a-axis, but has not changed its position compared to the 2019 Google Earth image (b). Boulder HAR 1 and niche HAR 3 cannot be identified on the 1966 image; this may be due to poor quality of the image or since they were formed afterwards. c) View towards the north with boulder HAR 1 lying in the depression behind the youngest ridge (photography September 2018).



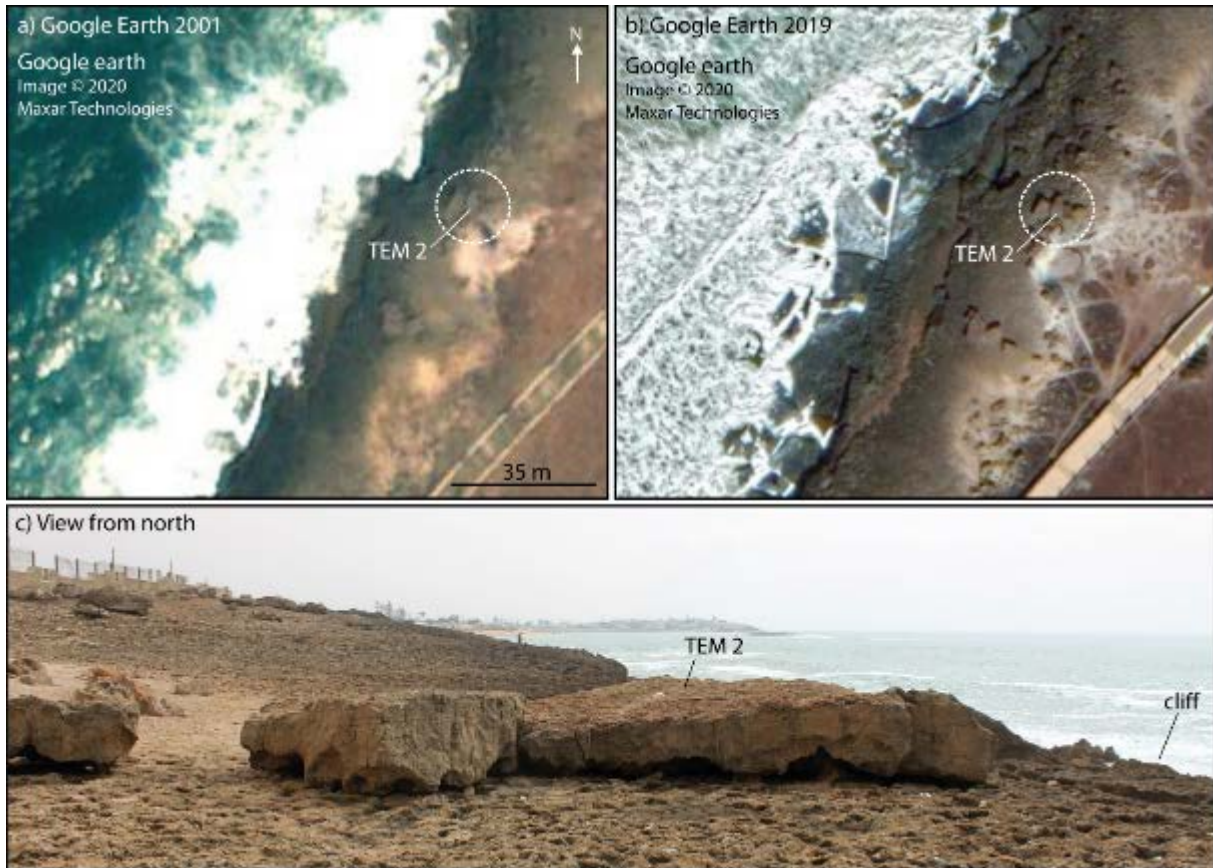


Fig. A10: Boulder TEM 2 at Temara. a) Boulder TEM 2 (white circle) can be located on 2001 Google Earth satellite images. It has not changed compared to its present position on the 2019 Google Earth image (b). It cannot be identified on the 1966 image; this may be due to poor quality of the image, or since it was deposited afterwards. c) View towards south with boulder TEM 2 lying on the supratidal cliff top platform formed by the youngest ridge (photography Juli 2016).

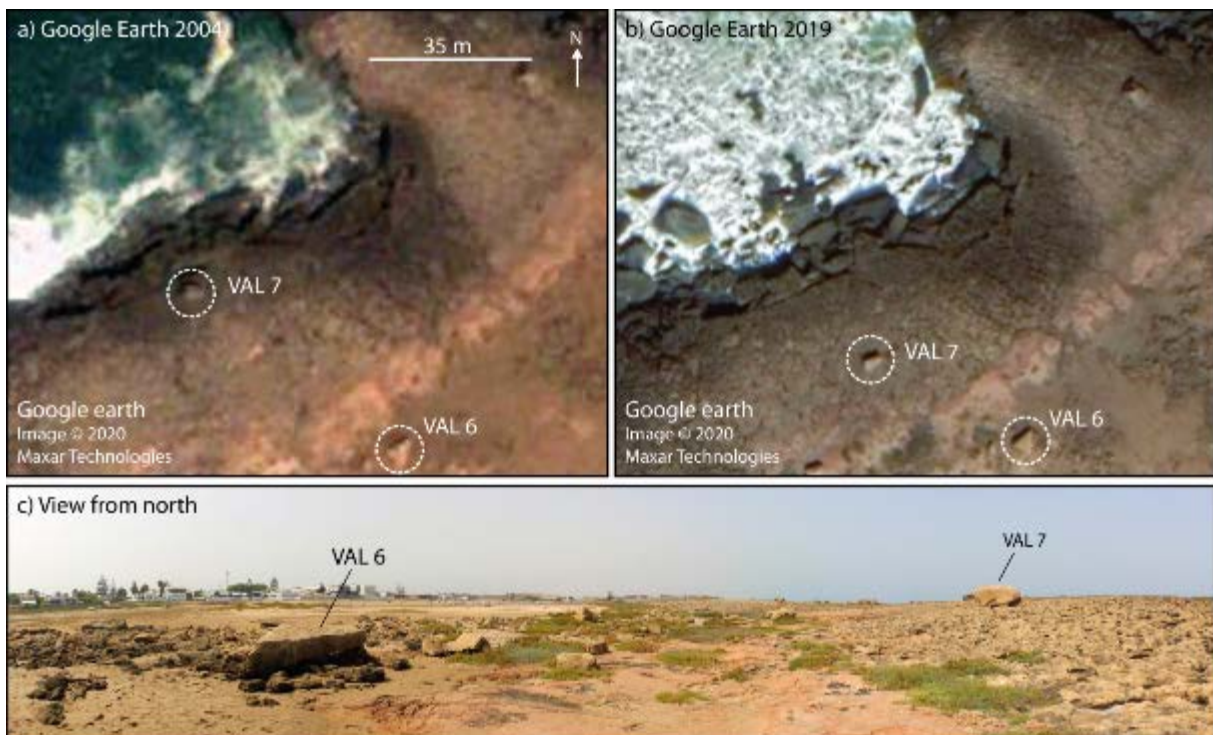


Fig. A11: Boulder VAL 6. a) Boulder VAL 6 (white circle) can be located on 2004 Google Earth satellite images. It has not changed compared to its present position on the 2019 Google Earth image (b). It cannot be identified on the 1966 Corona image; this may be due to poor quality of the image, or since it was deposited afterwards. c) View towards south with boulder VAL 6 lying in the depression behind the youngest ridge (photography Juli 2016).

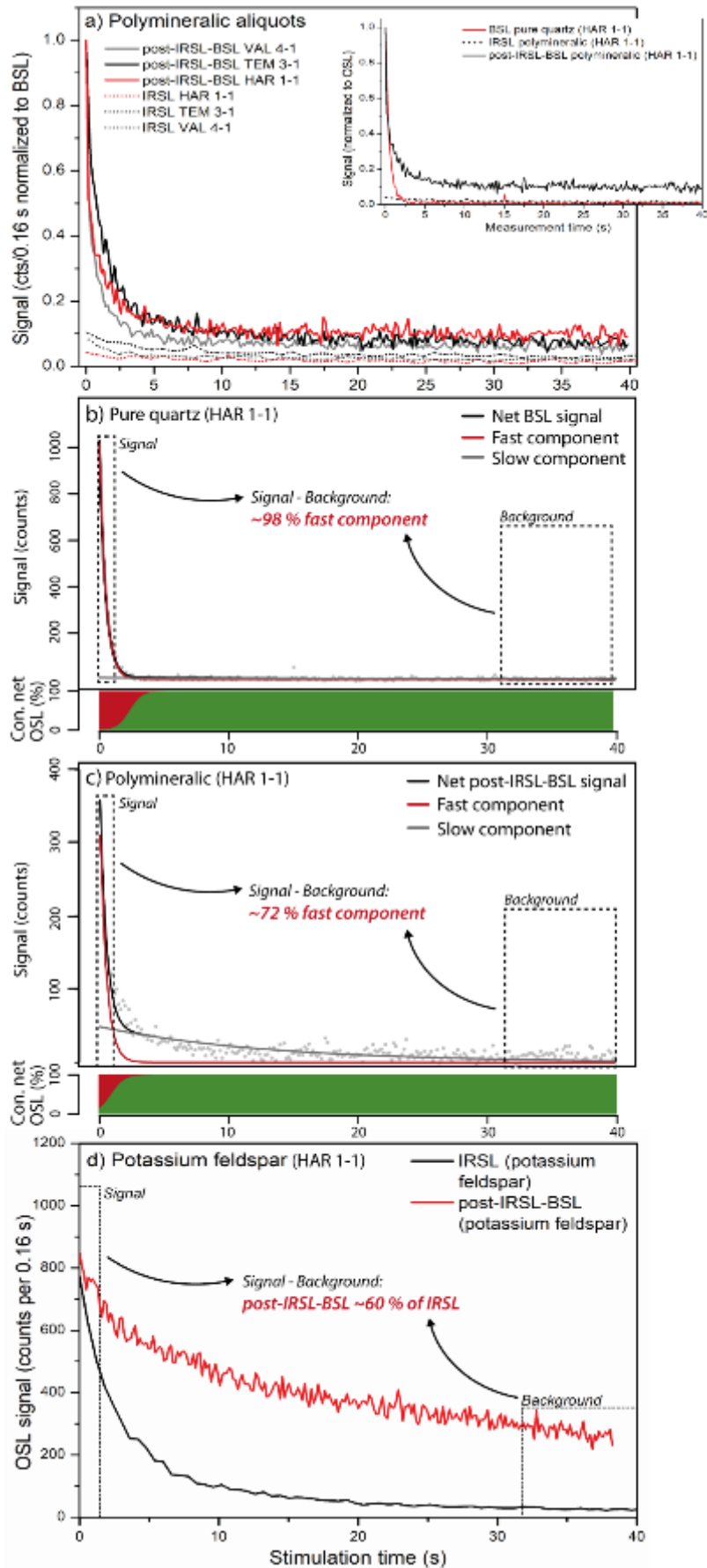


Fig. A12: Luminescence signal properties in the dated sandstone. a) Decay curves of post-IRSL-BSL and IRSL signals of polymineralic aliquots. The post-IRSL-BSL signals are significantly more intensive than the associated IRSL signals

(intensities sum up to only 12-24 % of those of the associated post-IRSL-BSL signals). Inset: Comparison of post-IRSL-BSL and IRSL decay curves of polymineralic aliquots and a pure quartz extract of sample HAR 1-1. b) Quartz BSL signal components achieved by fitting the BSL decay curve of pure quartz of HAR 1-1. The signal in the selected integration limits is dominated by a stable and easily bleachable fast component ( $\sigma = 2.4-2.5 \times 10^{-17}$ , cf. Jain et al., 2003), accounting for 98 % of the analysed net signal. c) Although less pronounced, post-IRSL-BSL signals of polymineralic samples are still dominated by the fast component ( $\sigma = 2.4-2.5 \times 10^{-17}$ , 72% of net signal). d) Comparison of IRSL and post-IRSL-BSL signals measured on potassium feldspar extracts of HAR 1-1. The counts of the background-corrected post-IRSL-BSL signal equal ~60 % of the background-corrected IRSL signal. This indicates that post-IRSL-BSL signals on our polymineralic aliquots are relatively unaffected by a feldspar signal contribution: IRSL signals amount to 12-24 % of the post-IRSL-BSL signals in polymineralic aliquots; 60 % of this IRSL emission still contributes to the post-IRSL-BSL signals, which equals 7.5-15 % of the net post-IRSL-BSL signal in polymineralic aliquots.

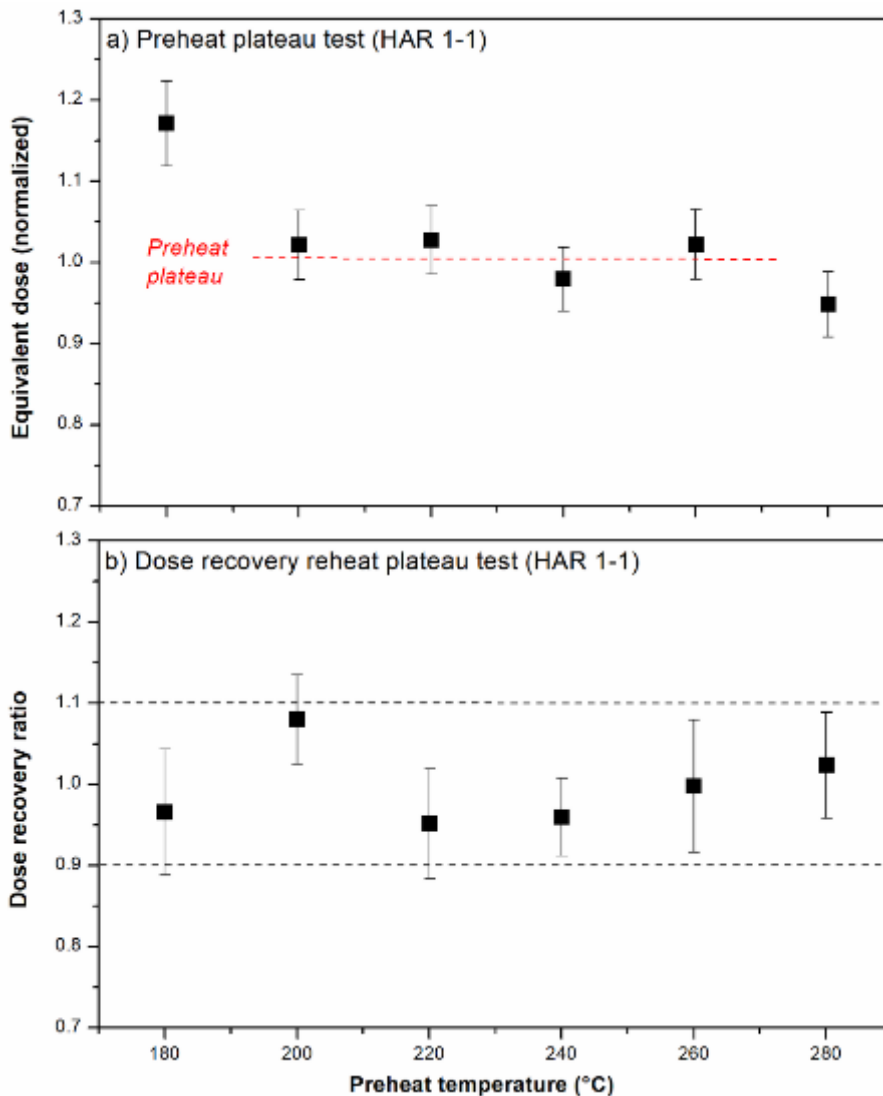


Fig. A13: Preheat plateau test (a) and dose recovery preheat plateau test with laboratory doses of ~5 Gy (b) performed on quartz extracts of sample HAR 1-1. Both experiments indicate a preheat plateau for temperatures between 200 and 260 °C.

<b>Step</b>	<b>Treatment</b>	<b>Signal</b>
1	Preheat (220 °C for 10 s)	
2	IR LEDs (160 s @ 50 °C)	$L_n$ (IRSL)
3	Blue LEDs (40 s @ 125 °C)	$L_n$ (post-IRSL-BSL)
4	Test dose (~12 Gy)	
5	Preheat (220 °C for 10 s)	
6	IR LEDs (160 s @ 50 °C)	$T_n$ (IRSL)
7	Blue LEDs (40 s @ 125 °C)	$T_n$ (post-IRSL-BSL)

**Tab. A2: Double SAR protocol used for measurement of  $L_n/T_n$  data from polymineralic aliquots of crushed slices.**

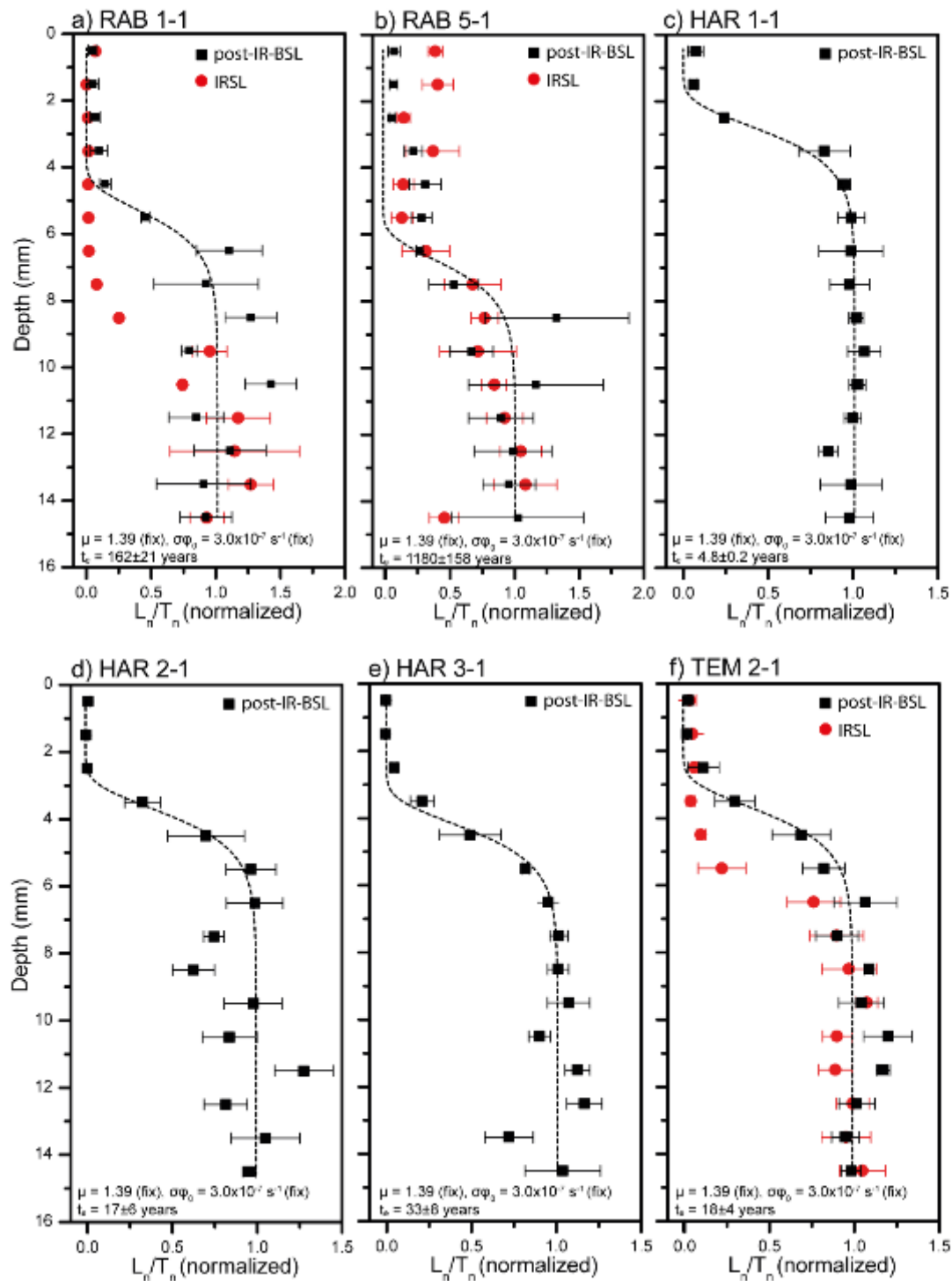


Fig. A14: Fitted post-IRSL-BSL signal-depth curves for boulder samples RAB 1-1, RAB 5-1, HAR 1-1, HAR 2-1, HAR 3-1 and TEM 2-1. All data points represent mean values plus standard error of 3-5 cores. For samples with sensitive IRSL signals, these were plotted for comparison.



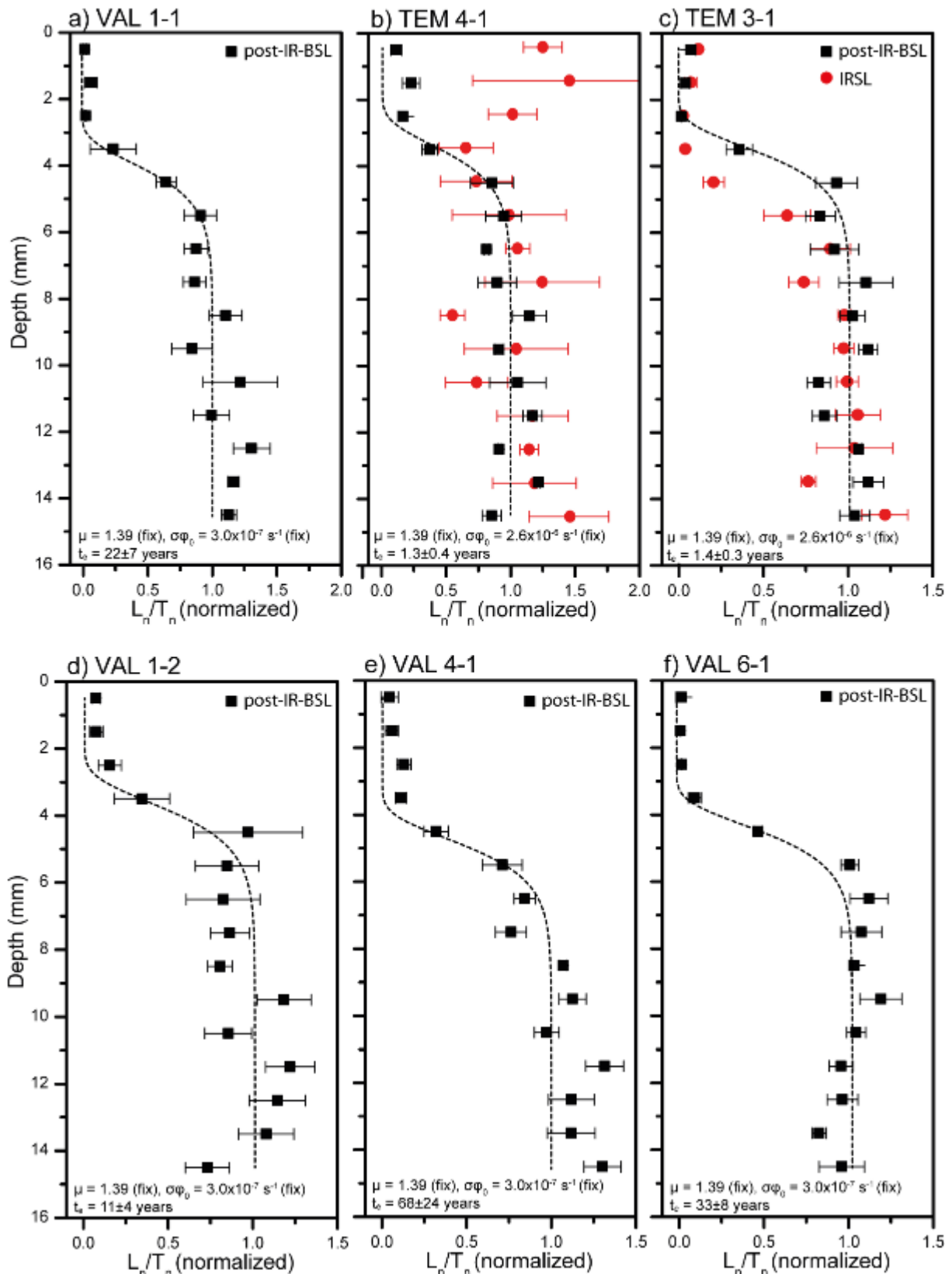


Fig. A15: Fitted post-IRSL-BSL signal-depth curves for boulder samples TEM 3-1, TEM 4-1, VAL 1-1, VAL 1-2, VAL 4-1 and VAL 6-1. All data points represent mean values plus standard error of 3-5 cores. For samples with sensitive IRSL signals, these were plotted for comparison.



**Fig. A16: Calibration samples. a) Roof top sample VAL 4-1 CAL I. b) Surface on boulder VAL 4 exposed during first field survey in July 2016 by removing at least 10 cm of rock. c) Roof of the house used for artificially exposing rock samples; samples VAL 4-1 CAL I and HAR 1-1 CAL were placed on top of the highest roof shown in the photo. d) Surface of boulder TEM 3 exposed during the first field survey in July 2016; at least 10 cm of rock were removed.**

Step	Treatment	Signal
1	Preheat (220 °C for 10 s)	
2	Blue LEDs (40 s @ 125 °C)	L <sub>x</sub> (BSL)
3	Test dose (~6 Gy)	
4	Preheat (220 °C for 10 s)	
5	Blue LEDs (40 s @ 125 °C)	T <sub>x</sub> (BSL)
6	Regenerative dose (R1 to R4, R0, R1)	
7	Return to Step 1	

Tab. A3: SAR protocol used for equivalent dose measurement of quartz extracts.

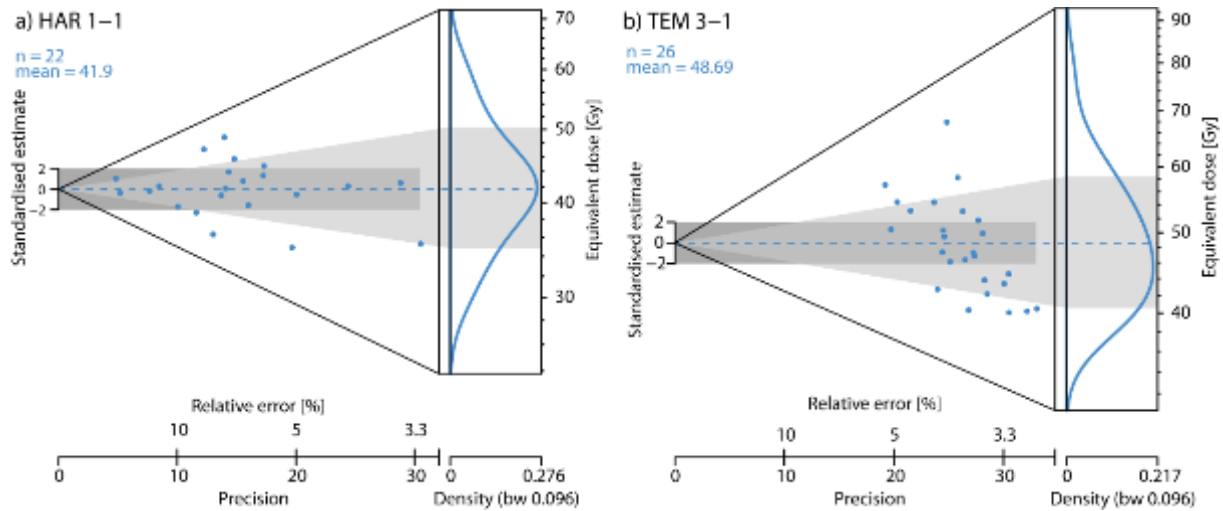


Fig. A17: Equivalent dose distributions determined on quartz extracts of samples HAR 1-1 and TEM 3-1 (presented as Abanico plots).

Sample	U (ppm)	Th (ppm)	K (%)	Dose rate (Gy/ka)	Grain size ( $\mu\text{m}$ )	N	OD (%)	CAM De (Gy)	Age (ka)
HAR 1-1	0.91 $\pm$ 0.06	0.62 $\pm$ 0.06	0.11 $\pm$ 0.01	0.53 $\pm$ 0.02	100-200	22	16 $\pm$ 3	41.7 $\pm$ 1.6	81.0 $\pm$ 4.1
TEM 3-1	0.86 $\pm$ 0.05	0.62 $\pm$ 0.05	0.10 $\pm$ 0.01	0.51 $\pm$ 0.02	100-200	26	17 $\pm$ 2	48.6 $\pm$ 1.7	98.1 $\pm$ 4.8

Tab. A4: Dose rates, equivalent doses and conventional burial ages for samples HAR 1-1 and TEM 3-1.

Sample	Control age (years)	Erosion rate (mm/year)
VAL 1-1	50	0.02
VAL 1-1	450	0.03
VAL 1-1	6000	0.03
VAL 1-2	50	0.07
HAR 1-1	15	0.18
HAR 2-1	50	0.04
RAB 1-2	50	0.06

Tab. A5: Modelling of post-transport erosion for samples with exposure ages that underestimate the minimum control ages (VAL 1-1, VAL 1-2, RAB 1-2, HAR 1-1 and HAR 1-2) and  $t_s$  equal to the control age (i.e. constant erosion rates for the entire exposure duration).