

Supplement of

Different Coastal Marsh Sites Reflect Similar Topographic Conditions for Bare Patches and Vegetation Recovery

Chen Wang^{1,2}, Lennert Schepers², Matthew L. Kirwan³, Enrica Belluco⁴, Andrea D'Alpaos⁵, Qiao Wang^{6,1}, Shoujing Yin¹, and Stijn Temmerman²

Contents of this file

Figure S1 – S3

Introduction

This supporting information provides the LIDAR data for the three sites. These data were acquired and processed as described in the 'Materials and data preprocessing' section of the paper.

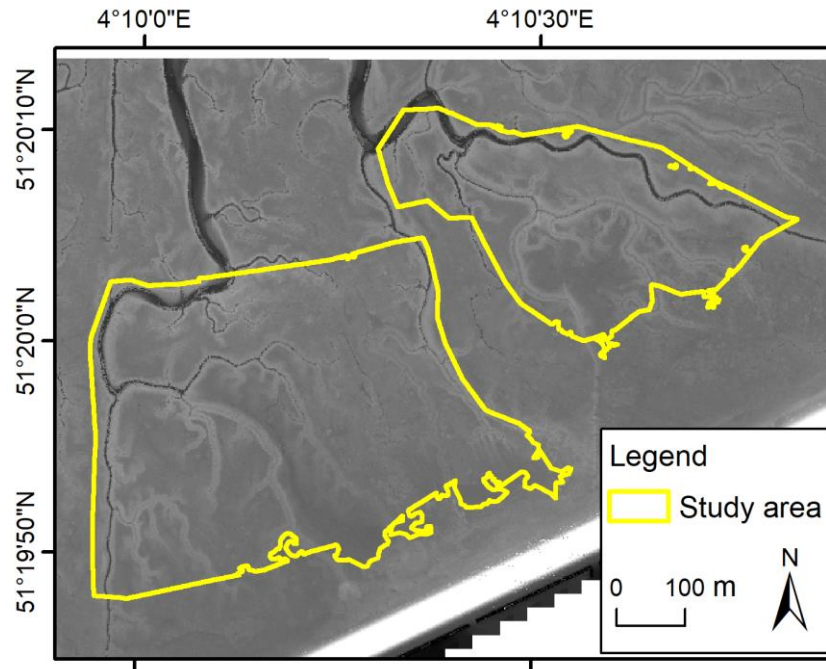


Figure S1. LIDAR data for Saeftinghe.

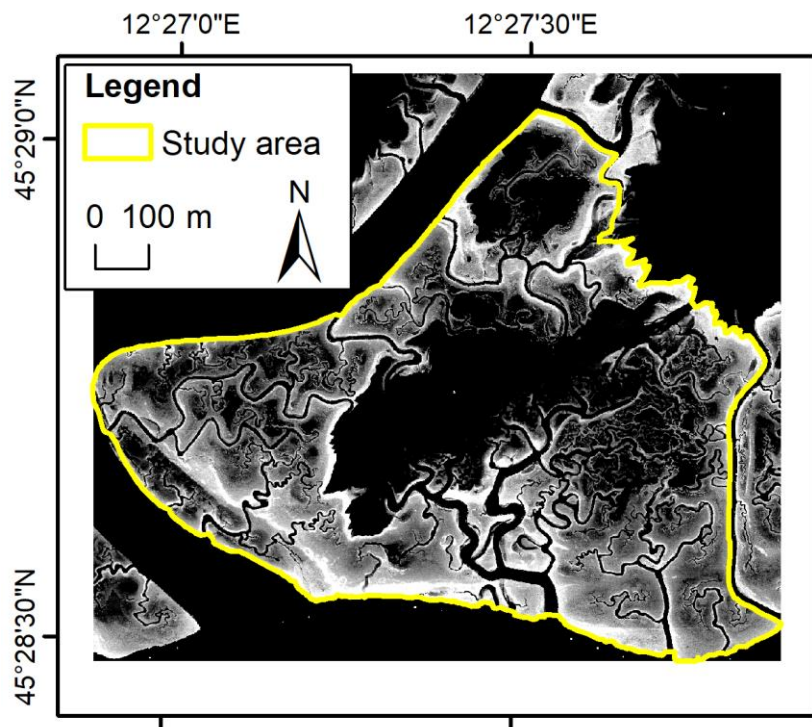


Figure S2. LIDAR data for San Felice.

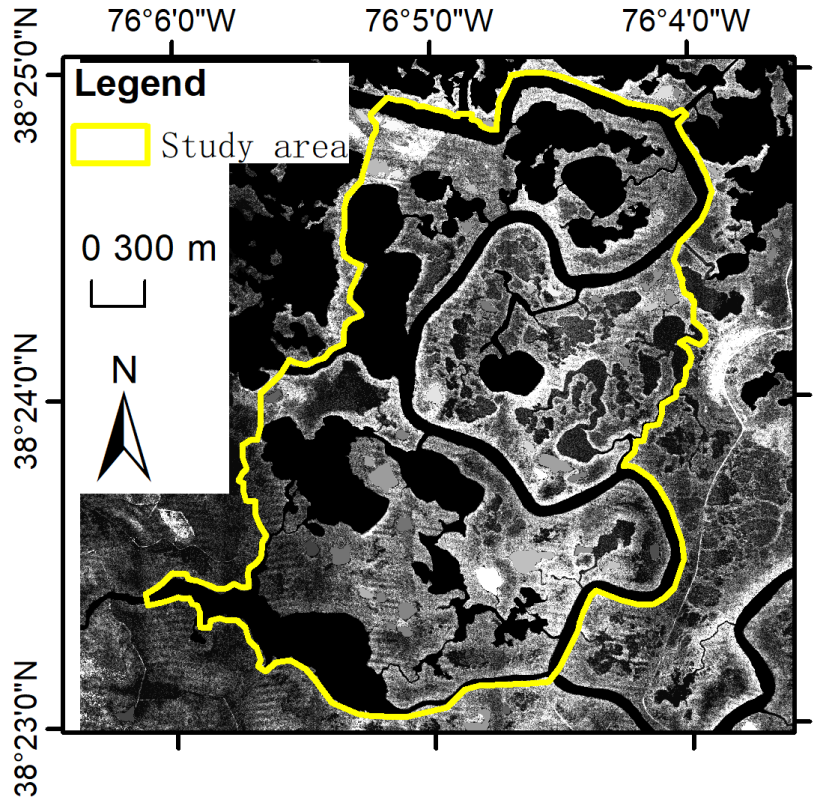


Figure S3. LIDAR data for Blackwater.