

Response to RC1 (Georgina Bennett):

Dear Georgina Bennett,

5 thank you for your constructive and insightful comments which we feel helped to improve the manuscript.

We (i) uploaded a revised version of the manuscript (changes highlighted and commented), (ii) posted a new author's comment to inform on minor general amendments in the manuscript, and (iii) below provide a point-by-point response to all your comments. Our response is structured as follows: (1) referee comment, (2) author's response and (3) changes in manuscript text.

- 10
- (1) Sometimes it is difficult to distinguish results presented in the two different papers. Perhaps make it clear briefly in the introduction the key findings and differences between these.
 - 15 (2) To highlight the distinctions of the companion papers we (i) expanded the abstract, (ii) summarized the key findings of the companion paper in the introduction (Sect. 1), and (iii) slightly modified the conclusions (Sect. 6).
 - (3) The summary given in the introduction reads as follows:
This paper is closely linked to a companion paper (Hartmeyer et al., 2020) which identified significant glacial thinning (0.5 m a⁻¹) adjacent to the monitored rockwalls and found elevated rockfall activity in the freshly deglaciated terrain. 60 % of the rockfall volume detached from less than ten vertical meters above the glacier surface. High rates 10-20 m above the glacier indicate enhanced rockfall activity over tens of years following deglaciation. Rockfall preconditioning probably starts inside the Randkluft (void between cirque wall and glacier) where sustained freezing and ample supply of liquid water causes enhanced physical weathering and high plucking stresses. As the glacier is wasting down strong temperature variations will induce pronounced thermal stress in the first-time exposed rock, cause rock fatigue and lead to the formation of a deep active layer, all of which will exert significant destabilizing effects in glacier-proximal areas.

20

25

###

- 30 (1) You emphasize differences in the rates of cirque retreat in this paper but need to visualize how your rates compare to others and why they might differ. You mention that it is hard to compare rates over different spatial and temporal scales. Perhaps you could produce a figure or table comparing rates collected over similar spatial and temporal scales and perhaps a bit more discussion on why these might differ and why yours are so high.
- 35 (2) We added a table listing cirque wall retreat rates from various studies and tried better distinguishing between retreat rates from cirques and from other arctic/alpine environments in the text. We also expanded the text to include potential causes for the elevated retreat rates observed.

###

- 40 (1) You seem to find a more elongated cirque geometry than the normal due to the effect of cataclinal back walls on erosion rates. Again, it would be interesting to see a plot visualizing the shape of this cirque in comparison to others, perhaps as a function of geological structure wherever this information is available?
- (2) Based on literature data we compared length/width ratios of cirques investigated here and those of other studies. We also added a plot visualizing the elongated shape of the monitored cirques and extended the review on structural controls of cirque shape.
- 45 (3) **The text now reads:** Length/width (L/W) ratios of both cirques (1.5 for eastern cirque, 1.2 for western cirque) exceed most L/W ratios given in the literature. In an extensive review of 25 different cirque inventories containing over 10,000 cirques from around the world, Barr and Spagnolo (2015) found a mean L/W ratio of 1.03 indicating that the majority of cirques is almost perfectly circular in shape. Deviations from circularity have mostly been attributed to glaciation history (review in Barr and Spagnolo, 2013) but geological structure is considered an important factor, too:
50 In the Western Alps and in the uplands of North Wales cirques that cut along geological strike are more elongated

than those cutting across strike (Federici and Spagnolo, 2004; Bennett and Glasser, 2009), in the Carpathians the dipping of bedding planes significantly influences cirque shape (Mindrescu and Evans, 2014), and in the French Pyrenees bedrock characteristics are considered key controls of cirque shape in anisotropic schists (Delmas et al., 2015).

55

###

- (1) There is some information on uncertainties in the power law distributions e.g. resulting from inclusion or not of the largest rockfalls, that should be presented in the results section and relevant figure.
- (2) The respective paragraphs have been transferred to the results section (Sect 4.4).

60

###

- (1) You also lack quantification of error in your rockfall volumes i.e. the propagation of alignment errors between 1-2 cm. These should ideally be propagated into volume error following the method used in Bennett et al. 2012.
- (2) Rockfall volume errors are discussed in the companion paper. We modified the text and added a cross-reference. Based on your suggestion the alignment error has now been integrated.
- (3) For each distance measurement the algorithm calculates the local confidence interval (at one sigma level), which was added to the alignment error and propagated into the volume error. Full details on rockfall volume computation and error quantification are provided in Hartmeyer et al., 2020. In addition to rockfall volume and its associated uncertainty a suite of morphometric parameters including slope aspect, gradient and elevation above glacier surface was determined for each rockfall source area.

65

70

Response to RC2 (Arjun Heimsath):

75

Dear Arjun. Heimsath,

thank you for your constructive and insightful comments which we feel helped to improve the manuscript.

80

We (i) uploaded a revised version of the manuscript (changes highlighted), (ii) posted a new author's comment to inform on minor general amendments in the manuscript, and (iii) below provide a point-by-point response to all your comments. Our response is structured as follows: (1) referee comment, (2) author's response and (3) changes in manuscript text.

85

- (1) Firstly, this is a study compiling 6 years' worth of repeat LIDAR scans of the same glacial features. This needs to be explicitly addressed and acknowledged in the discussion of results as well as in the introduction.
- (2) Has now been made more explicit in (i) introduction, (ii) results, and (iii) discussion sections.

###

90

- (1) In the introduction, I suggest including a section distinguishing between long term average studies (e.g. ones that use cosmogenic nuclides in one way or another like Greg Stock's extensive work in Yosemite or the approach of Heimsath and McGlynn (Geomorphology, 2008)) and the shorter time scale ones that are reporting results from monitoring studies such as this one (note that the Alaska paper of O'Farrell, Heimsath et al. (ESPL 07) had a short section of converting scree deposit to rock retreat rates as an example of short term studies).

95

- (2) We included a section distinguishing between short- and long-term studies to the introduction and integrated both suggested references (O'Farrell et al., 2009; Heimsath and McGlynn, 2008). We also included a table to the discussion (Table 1) that provides the time scale of the listed investigations.

100

- (3) **The text now reads:** Cirque wall retreat rates have been quantified using a variety of different approaches including long-term averages based on sediment deposits (e.g. Larsen and Mangerud, 1981), cosmogenic dating (e.g. Heimsath and McGlynn, 2008), and cirque allometry (e.g. Evans et al., 2006) as well as short-term monitoring studies based on lacustrine deposits (e.g. Hicks et al., 1990), supraglacial scree (e.g. O'Farrell et al. 2009), and terrestrial LiDAR (e.g. Kenner et al., 2011).

###

105

- (1) In the discussion section, it would be helpful to have a more thorough examination of the inferred frequency magnitude curves given limits in the data. Extensive examples from the hydrological sciences address the time scale issue and perhaps some can be used as template for framing this discussion (apologies, while I remember reading such papers I don't remember who they were by – I was better versed in this literature years ago).

110

- (2) We added a new paragraph to the discussion (Sect. 5.2) that addresses time scale issues and limits of the frequency-magnitude concept. Utilizing a bootstrapping simulation we further constrained the robustness of the sensitivity analysis inferred from the magnitude-frequency distribution.

115

- (3) **The text now reads:** Large rockfalls are rare in the observational record, yet they are of significant relevance for the shaping of alpine landscapes (Guthrie and Evans, 2007). How observations made over a few months or years relate to landscape evolution over millennia or longer (Paine, 1985) still remains elusive. The straight mathematical extrapolation (Sect. 4.4) indicates that rockfalls $\geq 10,000 \text{ m}^3$ ($\geq 100,000 \text{ m}^3$) recur on multi-decadal (centennial) time scales. Data from short observation periods however, can only provide a partial explanation of episodic process dynamics (Crozier, 1999). Furthermore, event frequency estimates based on short records assume long-term stationary systems (e.g. Klemeš, 1993) – an assumption that is particularly unrealistic given the severity of recent climate change. Similar to hydrological systems, estimating the event probability for rare, large events outside the observed frequency-magnitude spectrum introduces significant time scale issues (Blöschl and Sivapalan, 1995) and should be considered with caution also in slope systems.

120

125 Due to the episodic dynamics of rockfall processes, sensitivity estimations of observed magnitude-frequency distributions such as performed in the present study (Sect. 4.4) are of high relevance. Repeated random removal of one fifth of the events (bootstrapping simulation) as well as the targeted removal of large events ($> 100 \text{ m}^3$) did not significantly alter the resulting power law exponents and thus confirms the validity of the differences observed between proximal and distal areas.

130 ###

- (1) Second, I think a conceptual sketch/model to accompany Figure 2 would help a lot for visualizing how the authors tackle this problem. I found Figure 2 almost incomprehensible and if it had a sketch accompanying it that showed how measurements made in this study resulted in the inference of a retreat rate that would be great.
- (2) We adapted Figure 2 and hope that in combination with the additional section (Sect. 3.3) on the calculation of rockwall retreat rates the reader now gets a better understanding of the geological structure and rockwall retreat rates inferred.

135 ###

- (1) To this end, there really needs to be a better explanation of how these data are used to infer headwall retreat rates. Which areas were used and how exactly were the calculations done? What's the uncertainty on those calculations and what are the assumptions and simplifications? All of these questions could be illustrated in some way in a good conceptual model.
- (2) We added a new subchapter (Sect. 3.3) to describe the calculation of rockwall retreat rates (and modified Fig. 2). We also added the uncertainty of the retreat rates to the text and the figure in Sect. 4.2 (Figure 5 now contains error bars).

145 **(3) The text now reads:**

3.3 Rockwall Retreat Rate Calculation

150 First, the total rockfall volume registered was divided by the number of observation years to obtain mean annual volume (m^3). Second, the volume was divided by the surface area of the investigated rockwall (m^2) to derive the (slope-perpendicular) rockwall retreat rate. Rockwall surface area calculations were carried out in CloudCompare: point clouds of rockwalls were first subsampled (thinned) to a homogenous point density of 0.5 m^{-1} in order to prevent a potential bias due to variable resolution within point clouds. The subsampled point cloud was then used to generate a mesh based on a Delaunay triangulation (maximum edge length 4 m), which served as basis for the surface area calculation.

155 ###

- (1) Similarly, I think there needs to be better justification for the log binning approach. Given the short methods sentence addressing this I have no way to evaluate how good it is and whether it is justified. Does it introduce some bias? Convince me better that it does not with more analyses. The key question is whether it would make the reporting of results based on percentage of total rockfall volume quite different depending on how the sizes were binned?
- (2) We added a paragraph to justify the log binning approach.
- (3) **The text now reads:** Magnitude-frequency distributions of rockfalls often follow a power law function (as is also the case here, see Sect. 4.4). To classify rockfall volumes, the recorded events were grouped into bins of logarithmically increasing size to balance against strongly uneven event volumes (Fig. 3). This follows the volumetric classification introduced by Whalley (1974, 1984) (debris falls $< 10 \text{ m}^3$; boulder falls $10\text{-}10^2 \text{ m}^3$; block falls $10^2\text{-}10^4 \text{ m}^3$), which is commonly used in science and engineering (e.g. Brunetti et al., 2009; Krautblatter et al., 2012; Sellmeier, 2015).

165 ###

- (1) Finally, the distinctions between this paper and its companion paper could be made more clearly.
- (2) To highlight the distinctions of the companion papers we (i) expanded the abstract, (ii) summarized the key findings of the companion paper in the introduction (Sect. 1), and (iii) modified the conclusions (Sect. 6).

(3) The summary given in the introduction reads as follows:

This paper is closely linked to a companion paper (Hartmeyer et al., 2020) which identified significant glacial thinning (0.5 m a⁻¹) adjacent to the monitored rockwalls and found elevated rockfall activity in the freshly deglaciated terrain. 60 % of the rockfall volume detached from less than ten vertical meters above the glacier surface. High rates 10-20 m above the glacier indicate enhanced rockfall activity over tens of years following deglaciation. Rockfall preconditioning could start inside the Randkluft (gap between cirque wall and glacier) where sustained freezing and ample supply of liquid water likely cause enhanced physical weathering and high plucking stresses. As the glacier is wasting down strong temperature variations are assumed to induce pronounced thermal stress, cause rock fatigue and lead to the first-time formation of a deep active layer, which is expected to exert a significant destabilizing effect on glacier-proximal areas.

175

180

185 **Enhanced rockwall retreat and modified rockfall
magnitudes/frequencies in deglaciating cirques from a 6-year LiDAR
monitoring.**

Ingo Hartmeyer¹, Markus Keuschnig¹, Robert Delleske¹, Michael Krautblatter², Andreas Lang³, Lothar Schrott⁴, [Günther Prasicek^{3,5}](#), Jan-Christoph Otto³

190 ¹GEORESEARCH Research Institute, Wals, 5071, Austria

²Chair of Landslide Research, Technical University of Munich, Munich, 80333, Germany

³Department of Geography and Geology, University of Salzburg, Salzburg, 5020, Austria

⁴Department of Geography, University of Bonn, Bonn, 53115, Germany

⁵[Interdisciplinary Centre for Mountain Research, University of Lausanne, Bramois, 1967, Switzerland](#)

195 *Correspondence to:* Ingo Hartmeyer (ingo.hartmeyer@georesearch.ac.at)

Abstract. Cirque erosion contributes significantly to mountain denudation and is a key element of glaciated mountain topography. Despite long-standing efforts, rates of rockwall retreat and the proportional contributions of low-, mid- and high magnitude rockfalls have remained poorly constrained. Here, a unique, terrestrial LiDAR-derived rockfall inventory (2011-2017) of two glaciated cirques in the Hohe Tauern Range, Central European Alps, Austria is analysed. The mean cirque wall retreat rate of 1.9 mm a⁻¹ ranks in the top range of reported values and is mainly driven by enhanced rockfall from the lowermost, freshly deglaciating rockwall sections. Retreat rates are significantly elevated over decades subsequent to glacier downwasting. Elongated cirque morphology and recorded cirque wall retreat rates indicate headward erosion is clearly outpacing lateral erosion, most likely due to the cataclinal backwalls, which are prone to large dip-slope failures. The rockfall magnitude-frequency distribution – the first such distribution derived for deglaciating cirques – follows a distinct negative power law over four orders of magnitude. Magnitude-frequency distributions in glacier-proximal and glacier-distal rockwall sections differ significantly due to an increased occurrence of large rockfalls in recently deglaciating areas. In this paper, [the second of two companion pieces](#), we show how recent climate warming shapes glacial landforms, controls spatiotemporal rockfall variation in glacial environments and indicates a transient signal with decadal scale exhaustion of rockfall activity immediately following deglaciation crucial for future hazard assessments.

210 **1 Introduction**

Cirque erosion contributes significantly to the morphological appearance of glaciated mountain ranges. It controls rockwall retreat and creates emblematic high-alpine landform features such as horn-type peaks and sharp-edged ridges. Erosional processes operating in glacial cirques are widely recognized as important agents of high-alpine landscape evolution (Benn and Evans, 2010; Sanders et al., 2012; Scherler, 2014). Rockfall from cirque walls represents a primary source of debris for glacial systems and thus supplies tools for effective glacial erosion (Hallet, 1981). The disposal of sediment from cirque walls also

Kommentiert [IH1]: Both reviewers (RC1, RC2) suggested clearer distinctions between the companion studies.

represents a prominent entry point to the high-alpine sediment cascade and is, therefore, key to understanding of high-alpine sediment flux (Hales and Roering, 2005; Krautblatter et al., 2012; [Bennett et al. 2014](#)).

Cirque wall retreat is governed by rock slope failure, which can be statistically characterized by their magnitude-frequency distribution (Dussauge et al., 2003; Bennett et al., 2012). Magnitude-frequency distributions are widely used to derive probabilistic recurrence rates of an event of a given size (Dussauge-Peisser et al., 2002) and are key to understanding process efficiency. Mass movement size-distributions can usually be described by a power law (Hovius et al., 1997). Magnitude-frequency distributions of rockfall reflect rock mass properties and triggering mechanisms, and therefore change over time (Krautblatter and Moore, 2014). They constitute an important tool for understanding headwall geomorphology (Densmore et al., 1997), slope response to climatic and environmental change (Schloegel et al., 2011), sediment transport rates (Korup, 2005) and hazard potential (Krautblatter and Moser, 2009). Elevated rockfall activity from freshly excavated rockwalls, such as investigated here, is of major concern in all high-mountain regions, particularly where human pressure increases (Fischer et al., 2011; Purdie, 2013). Due to continuing climate warming its importance is expected to increase throughout the foreseeable future, making accurate knowledge of magnitude-frequency distributions essential for effective risk assessment throughout mountain regions and safeguarding high-alpine infrastructure (Arenson et al., 2009; Bommer et al., 2010).

High-alpine cirques were first studied in the early 20th century when cirque walls were considered to wear back through sapping at the base of the headwall and inside the *Randkluft* (gap between glacier and headwall) through intense frost weathering (Richter, 1900; Martone, 1901; Johnson, 1904). Subsequently, determining ground thermal conditions at the headwall base underlined the importance of periglacial weathering for cirque wall retreat (Gardner, 1987; Sanders et al., 2012). Additional process like rotational ice-flow (Lewis, 1949; Waldrop, 1964), enhanced quarrying due to subglacial meltwater drainage (Hooke, 1991; Iverson, 1991), strong abrasion under thick ice (Strøm, 1945), and slope collapse (Evans, 1997) are also considered key agents of cirque expansion. Numerous ~~morphometricallometry~~ [morphometry-shape](#) studies have focused on cirque ~~morphometry~~ and found remarkably similar cirque length and width across a number of mountain ranges (see review in Barr and Spagnolo, 2015). Deviations from the typical circular cirque-planform were mainly encountered where isometric cirque growth is modified by [geological structurebedrock-lithology](#) (Bennett and Glasser, 2009; Evans, 2006). Despite an extensive research focussing on cirques, cirque erosion is still poorly constrained and the number of published erosion rates has remained limited ([e.g. Larsen and Mangerud, 1981; Brook et al., 2006; Sanders et al., 2013](#)). [Cirque wall retreat rates have been quantified using a variety of different approaches including long-term averages based on sediment deposits \(e.g. Larsen and Mangerud, 1981\), cosmogenic dating \(e.g. Heimsath and McGlynn, 2008\), and cirque allometry \(e.g. Evans et al., 2006\) as well as short-term monitoring studies based on lacustrine deposits \(e.g. Hicks et al., 1990\), supraglacial scree \(e.g. O'Farrell et al. 2009\), and terrestrial LiDAR \(e.g. Kenner et al., 2011\).](#)

Inventories of rockfall and rock slope failures in high-alpine environments cover a wide range of spatial and temporal scales. Studies typically focus on catchment scale (Cossart et al., 2008; Krautblatter et al., 2012) or orogen scale (Noetzli et al., 2003; Allen et al., 2011) and mid- to high-magnitude events. Methods used to compile inventories are diverse and include field mapping and aerial photograph interpretation (Holm et al., 2004; Fischer et al., 2012), information from observer networks

Kommentiert [IH2]: As suggested by RC1 (G. Bennett)

Kommentiert [IH3]: Modified following suggestion by RC2 (A. Heimsath):

RC2 (A. Heimsath) originally wrote:
"In the introduction, I suggest including a section distinguishing between long term average studies (e.g. ones that use cosmogenic nuclides in one way or another like Greg Stock's extensive work in Yosemite or the approach of Heimsath and McGlynn (Geomorphology, 2008)) and the shorter time scale ones that are reporting results from monitoring studies such as this one (note that the Alaska paper of O'Farrell, Heimsath et al. (ESPL 07) had a short section of converting scree deposit to rock retreat rates as an example of short term studies)."

250 (Ravanel et al., 2010), comparisons of historical and recent photographs (Ravanel and Deline, 2010), ~~and~~ direct observations (Fischer et al., 2006), ~~and digital photogrammetry from aerial photographs (Bennett et al., 2012).~~

Comprehensive quantitative studies that also consider low-magnitude events and thus comprise the entire rockfall spectrum are rare. First approaches date back to the middle 20th century (Rapp, 1960). Over the last two decades, the emergence of LiDAR led to a marked increase of quantitative, high-resolution rockfall studies (Derron and Jaboyedoff, 2010) and provided
255 new insights on rockfall magnitude-frequency distributions (Abellán et al., 2011). However, due to limited resolution LiDAR systematically undersamples the smallest magnitudes (rockfall particles < 10 cm) (Lim et al., 2010), which in some geological settings contribute significantly to rock slope mass wasting (Krautblatter et al., 2012).

Detailed multiannual LiDAR inventories to investigate magnitude-frequency distributions of rockfall were compiled for coastal cliffs (Rosser et al., 2005; Lim et al., 2006), volcanic rock slopes (Nguyen et al., 2011), granitic and limestone rockwalls
260 (Stock et al., 2011; Strunden et al., 2015), and in urban areas (Abellán et al., 2011). Such studies have focussed on precursory events and pre-failure deformation (Rosser et al., 2007; Abellán et al., 2010), disintegration monitoring of single rock slope failures (Oppikofer et al., 2008; Oppikofer et al., 2009), evaluation of rock masses near infrastructure (Hung et al., 1999; Lato et al., 2012) and analysis of long-term rockwall retreat (Heckmann et al., 2012; Strunden et al., 2015).

For glaciated cirques, no rockfall magnitude-frequency distributions have been reported so far. Other steep bedrock
265 environments that have been targeted are coastal cliffs (Williams et al., 2018), small ~~river-debris flow~~ basins (Bennett et al., 2012), gorge systems (Dussauge-Peisser et al., 2002) and valley flanks (Guzzetti et al., 2003). Rockfall studies in cirque environments either focused on large singular events (Rabatel et al., 2008), on rockfall around infrastructures (Ravanel et al., 2013), or on spatially limited sections of (deglaciating) cirques (Kenner et al., 2011). Spatiotemporal rockfall patterns and rockwall retreat rates for entire cirques over several years have not yet been reported. Despite research efforts reaching back
270 more than 100 years, contemporary cirque wall retreat rates and the efficiency of specific magnitudes have remained unconstrained representing a significant problem for landscape evolution studies and a challenge for rockfall risk management (Brocklehurst and Whipple, 2002; Benn and Evans, 2010; Scherler, 2014).

~~Here we address this research gap by analysing data from a comprehensive rockfall inventory compiled during six years, high alpine terrestrial LiDAR monitoring campaign (2011-2017) of repeat laserscanning of the same rockwalls, carried out in the rockwalls of~~ ~~in~~ two neighbouring, glacierized cirques in the Hohe Tauern Range, Central Alps, Austria ~~(Hartmeyer et al., submitted).~~ We (i) identify significantly increased cirque wall dismantling in the vicinity of the current glacier surface, (ii) observe mean cirque wall retreat rates that rank among the highest values reported yet, (iii) reveal that headward erosion outpaces lateral erosion consistent with present cirque shape, ~~and~~ (iv) quantify the first ever magnitude-frequency distribution from a deglaciating cirque, ~~and (v) demonstrate how a wave of instability follows current glacier downwasting.~~ Results are framed in the existing knowledge on magnitude-frequency relationships and considering effects of continuing climatic
275 changes. ~~This paper is closely linked to a companion paper (Hartmeyer et al., 2020) which identified significant glacial thinning (0.5 m a⁻¹) adjacent to the monitored rockwalls and found elevated rockfall activity in the freshly deglaciated terrain. 60 % of the rockfall volume detached from less than ten vertical meters above the glacier surface. High rates 10-20 m above the glacier~~

Kommentiert [IH4]: As suggested by RC1 (G. Bennett)

Kommentiert [IH5]: As suggested by RC1 (G. Bennett)

Kommentiert [IH6]: Modified following suggestions by RC2 (A. Heimsath).

RC2 (A. Heimsath) originally wrote:
"this is a study compiling 6 years' worth of repeat LIDAR scans of the same glacial features. This needs to be explicitly addressed and acknowledged in the discussion of results as well as in the introduction."

285 indicate enhanced rockfall activity over tens of years following deglaciation. Rockfall preconditioning probably starts inside the Randkluft (void between cirque wall and glacier) where sustained freezing and ample supply of liquid water likely causes enhanced physical weathering and high plucking stresses. As the glacier is wasting down strong temperature variations will induce pronounced thermal stress in the first-time exposed rock, cause rock fatigue and lead to the formation of a deep active layer, all of which will exert significant destabilizing effects in glacier-proximal areas.

2 Study Area

290 Two neighbouring glacial cirques at the Kitzsteinhorn, Central European Alps, Austria (Fig. 1) were chosen as study site. The two north-facing cirques (~ 0.3 km²), referred to as eastern cirque and western cirque, constitute the root zone of the Schmiedingerkees glacier (~ 0.8 km²), which has retreated considerably in recent years. Currently, the receding ice masses are constraint within the cirques, a state that is characteristic for many glaciers in the Eastern European Alps (Fischer et al., 2018). Adjacent to the investigated rockwalls, warming-related glacial thinning has led to downwasting rates around 0.5 m per year over the last decade leading to the exposure of fresh cirque wall sections (Hartmeyer et al., 2020submitted). Mean annual temperature and annual precipitation, both measured at a local weather station situated on the upper part of the Schmiedingerkees glacier (2,940 m a.s.l.), vary around -2 °C and 2,500 mm, respectively. Local borehole temperature monitoring demonstrates the existence of permafrost with temperatures of -1.8 °C (north-facing) and -1.3 °C (west-facing) at zero annual amplitude depth.

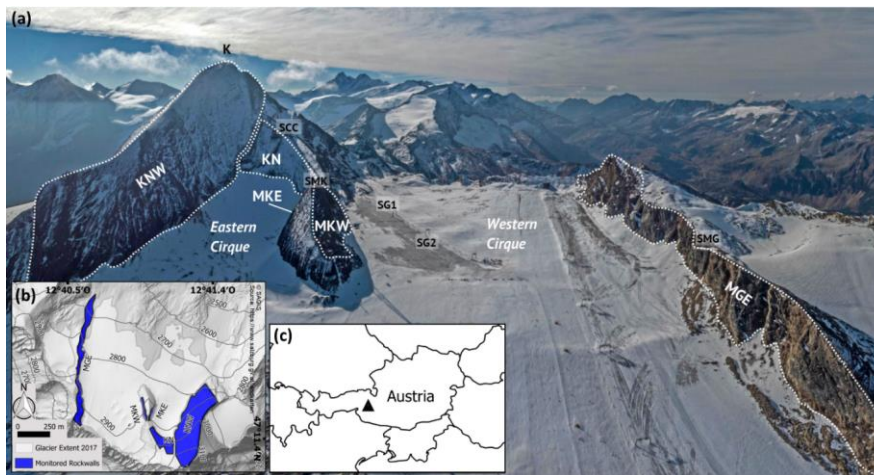


Figure 1: UAV view of rockwalls investigated (surface area, elevation above sea level, mean gradient are indicated in brackets): KN (23,500 m²; 2,920-3,060 m a.s.l.; 47°), KNW (133,400 m²; 2,770-3,200 m a.s.l.; 44°), MKE (11,100 m²; 2,850-2,950 m a.s.l., 71°), MKW (6,300 m²; 2,880-2,940 m a.s.l.; 63°), MGE (60,400 m²; 2,740-2,990 m a.s.l.; 61°) (Photo: Robert Delleske). 1b: Hillshade of study area

Kommentiert [IH7]: Both reviewers (RC1, RC2) suggested clearer distinctions between the companion studies.

RC1 (G. Bennett) originally wrote:
"Sometimes it is difficult to distinguish results presented in the two different papers. Perhaps make it clear briefly in the introduction the key findings and differences between these."

305 with monitored rockwalls (blue) and glacier extent. 1c: Location of study area within Austria. Abbreviations: K = Kitzsteinhorn (Summit), SMK = Scan Position 'Magnetkoepl', SCC = Scan Position 'Cable Car Top Station', SG1 = Scan Position 'Glacier 1', SG2 = Scan Position 'Glacier 2', SMG = Scan Position 'Maurergrat', see text for further abbreviations (Photo: UAV/R. Delleske).

The Schmiedingerkees glacier and the immediately adjacent summit pyramid of the Kitzsteinhorn constitute one of Austria's most frequented high-alpine tourist destinations with close to one million visitors per year. The Kitzsteinhorn hosts an extensive research site to investigate the consequences of climate change on high-alpine infrastructure and rock stability
310 ('Open-Air-Lab Kitzsteinhorn'). Measurements performed at the Kitzsteinhorn focus on rockfall activity (Keuschnig et al., 2015), subsurface temperature changes (Hartmeyer et al., 2012), geophysical monitoring with ERT (Supper et al., 2014; Keuschnig et al., 2016), rock mass pressure using anchor load plates (Plaesken et al., 2017) and fracture dynamics monitoring with crackmeters (Ewald et al., 2019).

Full details of the study site are presented in Hartmeyer et al., 2020submitted. In brief, the total surface area of the investigated
315 rockwalls is 234,700 m² and their mean vertical extent ranges between 35-200 m. All studied cirque walls are immediately adjacent to the Schmiedingerkees glacier: In the eastern cirque the Kitzsteinhorn north-face (KN) (backwall), Kitzsteinhorn northwest-face (KNW) and Magnetkoepl east-face (MKE) (sidewalls). In the western cirque no significant backwall exists and the Magnetkoepl west-face (MKW) and Maurergrat east-face (MGE) were monitored (Fig. 1).

All cirque walls developed in rocks of the Bündner schist formation within the Glockner Nappe and belong to the Glockner Facies consisting of calcareous micaschist, prasinite, amphibolite, phyllite, marble and serpentinite (Cornelius and Clar, 1935; Hoeck et al., 1994). Within the monitored rockwalls, NNE dipping (~45°) calcareous micaschists dominate, and isolated marble and serpentinite belts exist at Magnetkoepl. Two distinct joint sets (J1 dipping steep to W, J2 medium-steep to SW) oriented approximately orthogonal to the cleavage precondition disintegration into cubic rock fragments (Fig. 2). Numerous open fractures infilled with fine grained material enable water infiltration and affect near surface rock slope kinematics and thermal dynamics (Keuschnig et al., 2016; Ewald et al., 2019). Rock at the surface is highly fractured due to a pronounced frost weathering susceptibility. Strong tectonic forcing resulted in highly fractured weakness zones along major faults in all rockwalls. Rock mass classifications according to Romana, 1985 and Bieniawski, 1993 suggest highly variable lithological strength ranging from low stability values in weakened zones ($r=34$) and highly stable conditions in steep, unweathered sections ($r=98$) (Terweh, 2012).

320
325

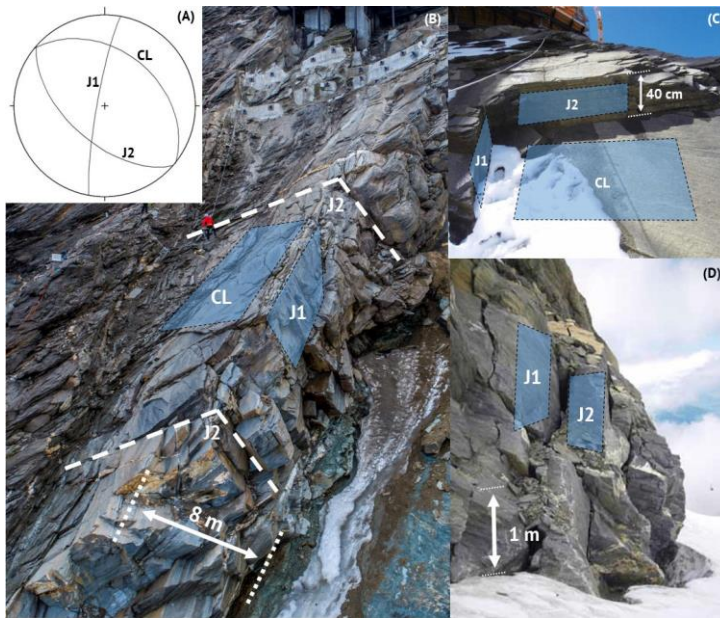
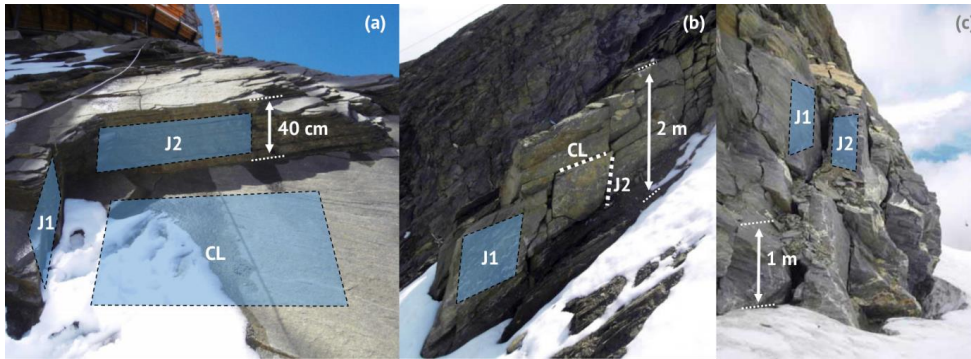


Figure 2: Dip and strike of the predominant discontinuities-orientations at the studied rockwalls (Fig. 2A). (a & b) Images of Kitzsteinhorn north-face (KN) (Fig. 2B/C) and (c) at Magnetkogel east-face (MKE) (Fig. 2D) (MKE), with C-cleavage (CL) and joint sets (J1, J2) indicated. Cleavage of the predominant calcareous mica-schists dips about 45° NNE. Joint sets J1 (dipping subvertical to W) and J2 (dipping steeply to SW) are approximately orthogonal to CL and predispose north-facing slopes for dip-slope failures (a, b Fig. 2B/C), while west- and east-facing areas are more susceptible to toppling failures (Fig. 2eD) (Photos: R. Delleske (2B), Andreas Schober (2C, 2D)).

Kommentiert [IH8]: Figure 2 modified following suggestion by RC2 (A. Heimsath):

RC2 (A. Heimsath) originally wrote:
"I found Figure 2 almost incomprehensible and if it had a sketch accompanying it that showed how measurements made in this study resulted in the inference of a retreat rate that would be great."

All cirque walls developed in rocks of the Bündner schist formation within the Glockner Nappe and belong to the Glockner Facies consisting of calcareous micaschist, prasinite, amphibolite, phyllite, marble and serpentinite (Cornelius and Clar, 1935; Hoeck et al., 1994). Within the monitored rockwalls, NNE-dipping (~ 45 °) calcareous micaschists dominate, and isolated marble and serpentinite belts exist at Magnetkoepl. Two distinct joint sets (J1 dipping steep to W, J2 medium-steep to SW) oriented approximately orthogonal to the cleavage precondition disintegration into cubic rock fragments (Fig. 2). Numerous open fractures infilled with fine-grained material enable water infiltration and affect near-surface rock slope kinematics and thermal dynamics (Keuschnig et al., 2016; Ewald et al., 2019). Rock at the surface is highly fractured due to a pronounced frost weathering susceptibility. Strong tectonic forcing resulted in highly fractured weakness zones along major faults in all rockwalls. Rock mass classifications according to Romana (1985) and Bieniawski (1993) suggest highly variable lithological strength ranging from low stability values in weakened zones ($r = 34$) and highly stable conditions in steep, unweathered sections ($r = 98$) (Terweh, 2012).

3 Methods

3.1 LiDAR Data Acquisition and Processing

Full details of data acquisition can be found in Hartmeyer et al., 2020submitted. In brief, terrestrial LiDAR acquisition was based on a Riegl LMS-Z620i laserscanner equipped with a calibrated high-resolution digital camera to take referenced colour images.

Rockwalls were scanned in reflectorless mode at least once a year between 2011 and 2017 at the end of the ablation period. A total of 56 rockwall scans were carried out with variable mean object distances (140-650 m) depending on the used scan position. Resulting point cloud resolution typically ranges between 0.1-0.3 m (see supplement of Hartmeyer et al., 2020submitted (Table S2) for a full list of data acquisition parameters).

Iterative-Closest-Point (ICP) procedures (Chen and Medioni, 1992) were applied for point cloud alignment. Areas that have been subject to surface change between surveys were discarded during the process and therefore do not negatively affect the quality of surface matching (Abellán et al., 2010; Abellán et al., 2011), resulting in alignment errors between 1-2.5-3.7 cm. Surface changes between point clouds were identified using the M3C2 algorithm of Lague et al., 2013 due to its robust performance on irregular surfaces, with missing data and changes in point density. For each distance measurement the algorithm calculates the local confidence interval (at one sigma level), which was added to the alignment error and propagated into the volume error. Full details on rockfall volume computation and error quantification are provided in Hartmeyer et al., 2020. In addition to rockfall volume and its associated uncertainty a suite of morphometric parameters including slope aspect, gradient and elevation above glacier surface was determined for each rockfall source area. Rockfall volumes were estimated for each individual rockfall source area as well as morphometric parameters like slope aspect, gradient and elevation above glacier surface.

Formatiert: Standard

Kommentiert [IH9]: Modified following suggestion by RC1 (G. Bennett).

RC1 (G. Bennett) originally wrote:
"You also lack quantification of error in your rockfall volumes i.e. the propagation of alignment errors between 1-2 cm. These should ideally be propagated into volume error following the method used in Bennett et al. 2012."

3.2 Rockfall Magnitude-Frequency Calculation

370 Numerous studies (e.g. Hungr et al., 1999) demonstrated that the relationship between rockfall volume and cumulative rockfall frequency can be defined by a power law following Eq. (1):

$$f(V) = \alpha V^{-b} \quad (1)$$

where $f(V)$ is the cumulative number of rockfalls, V is the rockfall volume, and α is the pre-factor, and b is the are constants power law exponent. To test the power-law-fit of an empirical distribution, earlier studies mainly relied on two regression approaches: cumulative distribution functions (CDF) and probability density functions (PDF) (Bennett et al., 2012; Strunden et al., 2015). According to (Bennett et al., 2012) the PDF is better suited to visualize rollovers, i.e. a decrease in the frequency density for small events. It requires, however, logarithmic binning of rockfall volumes that is rather subjective and has been demonstrated to introduce bias in the calculation of power law exponents (Clauzet et al., 2009; Bennett et al., 2009). As will be shown in Sect. 4.4, the magnitude-frequency data used here does not show a rollover at low event sizes and so CDFs were constructed using the R package poweRlaw (Gillespie, 2015).

380 Following earlier analyses of rockfall magnitude-frequency distributions (Barlow et al., 2012; Strunden et al., 2015) the sensitivity of the power law exponent was tested using a bootstrapping approach (Monte Carlo simulation), in which 20 % of the rockfalls were randomly removed and the data set resampled 100,000 times to calculate median, 2.5th and 97.5th percentiles.

385 3.3 Rockwall Retreat Rate Calculation

390 First, the total rockfall volume registered was divided by the number of observation years to obtain mean annual volume (m³). Second, the volume was divided by the surface area of the investigated rockwall (m²) to derive the (slope-perpendicular) rockwall retreat rate. Rockwall surface area calculations were carried out in CloudCompare: point clouds of rockwalls were first subsampled (thinned) to a homogenous point density of 0.5 m⁻¹ in order to prevent a potential bias due to variable resolution within point clouds. The subsampled point cloud was then used to generate a mesh based on a Delaunay triangulation (maximum edge length 3 m), which served as basis for the surface area calculation.

4 Results

4.1 Rockfall Magnitudes

395 Over the course of the monitoring program which investigated the same five cirque walls for six consecutive years (2011-2017), scan positions and acquisition resolution had to be altered resulting in differing data resolution between scans. To enable direct comparison of scans of differing resolution the impact of scan resolution on the number of events detected was

Kommentiert [IH10]: Sensitivity analysis was expanded following suggestions by RC2 (A. Heimsath) and reviewers of the companion paper.

Kommentiert [IH11]: This subchapter was added following suggestion by RC2 (A. Heimsath).

RC2 (A. Heimsath) originally wrote:
"there really needs to be a better explanation of how these data are used to infer headwall retreat rates. Which areas were used and how exactly were the calculations done? What's the uncertainty on those calculations and what are the assumptions and simplifications?"

Formatiert: Standard

Kommentiert [IH12]: Modified following RC2 (A. Heimsath):

RC2 (A. Heimsath) originally wrote:
"this is a study compiling 6 years' worth of repeat LIDAR scans of the same glacial features. This needs to be explicitly addressed and acknowledged in the discussion of results as well as in the introduction."

constrained. Using a regression analysis it is shown that for events larger than 0.1 m³ scan resolution has no statistically significant impact (Hartmeyer et al., 2020submitted).

Above this threshold, 374 rockfalls were identified resulting in a total volume of 2,551.4 ± 136.785.3 m³. Magnitude-frequency distributions of rockfalls often follow a power law function (as is also the case here, see Sect. 4.4). To classify rockfall volumes, the recorded events were grouped into bins of logarithmically increasing size to balance against strongly uneven event volumes (Fig. 3). This follows the volumetric classification introduced by Whalley (1974, 1984) (debris falls < 10 m³; boulder falls 10-10² m³; block falls 10²-10⁴ m³), which is commonly used in science and engineering (e.g. Brunetti et al., 2009; Krautblatter et al., 2012; Sellmeier, 2015).

A dominance of large events is evident as two thirds (67 %) of the rockfall volume fall into the largest size class (100-1,000 m³), while the next smaller class (10-100 m³) accounts for approximately one fourth (23 %), and the two smallest classes (0.1-10 m³) combined constitute only about one tenth (10 %) of the total rockfall volume.

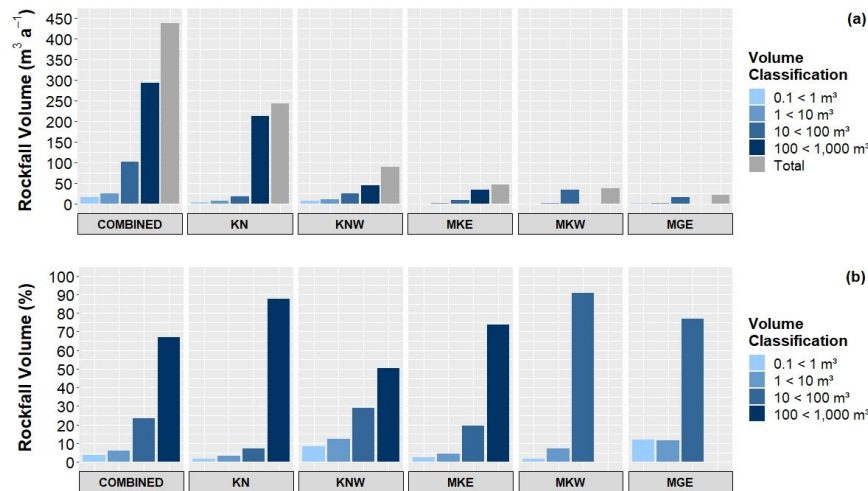


Figure 3: (a) Absolute rockfall volume (m³ a⁻¹), (b) relative rockfall volume (%) for all monitored rockwalls. About two thirds (67 %) of the total rockfall volume fall into the largest size class (100-1,000 m³) reflecting the dominance of large events.

When analysed individually for each rockwall, the size distribution shows significant differences due to the impact of individual large rockfalls: At all walls most of the rockfall volume is represented by the largest size classes (at KN rockfalls > 100 m³ contribute 88 %, at MKE and KNW contributions equal 74 % and 50 %, respectively and no rockfalls > 100 m³ occurred at MKW and MGE). The combined share of the two largest size classes (i.e. rockfalls > 10 m³) ranges between 77 % (MGE)

Kommentiert [IH13]: Modified following RC2 (A. Heimsath):

RC2 (A. Heimsath) originally wrote:
I think there needs to be better justification for the log binning approach. Given the short methods sentence addressing this I have no way to evaluate how good it is and whether it is justified. Does it introduce some bias? Convince me better that it does not with more analyses. The key question is whether it would make the reporting of results based on percentage of total rockfall volume quite different depending on how the sizes were binned?

and 95 % (KN), whereas the smallest size class (0.1 – 1 m³) represents only around 2 % of the total volume at KN and at the Magnetkoepl (MKE, MKW) and about 10 % at MGE and KNW.

In a companion study, we demonstrated significantly increased rockfall in the immediate surroundings of the glacier resulting from antecedent rockfall preparation inside the Randkluft and recent glacial downwasting adjacent to the investigated cirque walls (Hartmeyer et al., 2020submitted). This is also evident if the volume classification is further differentiated according to distance from glacier (Fig. 4): At 0-10 vertical meters above the glacier surface (“proximal areas”), rockfalls larger than 100 m³ constitute 84 % of the total volume whereas in rockwall sections located > 10 m above the glacier surface (“distal areas”) the contribution of this class drops to just 41 %. Small rockfalls below 1 m³ on the other hand contribute around 1 % to the total rockfall volume in proximal areas, while in distal areas this part increases to 7 %.

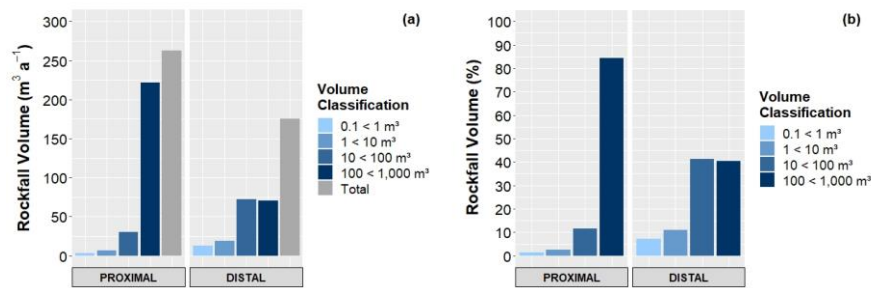


Figure 4: (a) Absolute rockfall volume (m³ a⁻¹), (b) relative rockfall volume (%) for rockwall sections 0-10 vertical meters above the glacier surface (“Proximal”) and for higher (> 10 m) rockwall sections (“Distal”). Large events (100-1,000 m³) dominate rockfall size distributions in proximal areas while distal areas show a more balanced distribution.

4.2 Rockwall Retreat Rates

Across the full six-year period of observation and across all rockwalls the total rockfall volume is 2,551.4 ± 136.7 m³ which corresponds to a mean retreat rate is 4.91.86 ± 0.10 mm a⁻¹. In detail, annual rockwall retreat varies considerably between the rockwalls investigated and is highest along highly fractured weakness zones close to the glacier surface (Hartmeyer et al., 2020submitted). The maximum rate is found at KN (10.324 ± 0.22 mm a⁻¹), followed by the two rockwalls of the Magnetkoepl. At MKW retreat rates equal 5.94 ± 0.38 mm a⁻¹, and at MKE 4.20 ± 0.29 mm a⁻¹ was recorded. Lowest rates were calculated for KNW (0.70.68 ± 0.07 mm a⁻¹) and MGE (0.35 ± 0.04 mm a⁻¹) (Fig. 5).

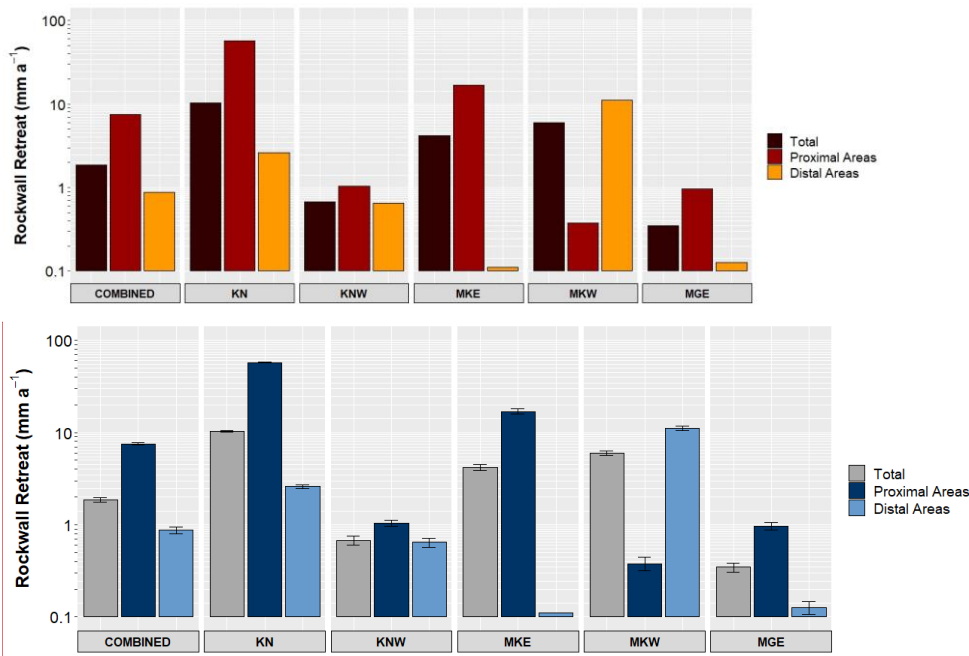
In proximal areas, mean retreat rates of 7.56 ± 0.22 mm a⁻¹ are found and in distal areas rates are almost an order of magnitude lower (0.90.88 ± 0.08 mm a⁻¹). By far the highest retreat rates in proximal areas were registered at KN (57.32 ± 0.67 mm a⁻¹), followed by MKE (47.016.97 ± 1.16 mm a⁻¹). At KN several large rockfalls were recorded adjacent to the glacier surface along a prominent joint intersection. Following the cleavage direction at MKE a ledge of highly fractured micaschists runs diagonally

Kommentiert [IH14]: Uncertainty of retreat rates was added following suggestions by RC2 (A. Heimsath).

Kommentiert [IH15]: Modified following RC2 (A. Heimsath):

RC2 (A. Heimsath) originally wrote:
“this is a study compiling 6 years’ worth of repeat LIDAR scans of the same glacial features. This needs to be explicitly addressed and acknowledged in the discussion of results as well as in the introduction.”

440 through the rockwall. Here, the highest instability occurs especially in the immediate vicinity of the glacier surface from where a major share of the rockfall volume originates.



445 **Figure 5: Rockwall retreat rates (mm a⁻¹) (i) for the entire rockwall (dark red), (ii) for proximal areas (0-10 m, red) and (iii) for distal areas (> 10 m, orange). The mean rate over the six-year observation period is just under 2 mm a⁻¹ were found. Rockwall retreat rates in proximal areas (7.6 mm a⁻¹) were almost an order of magnitude higher than in distal areas (0.9 mm a⁻¹).**

The highest distal retreat rates are found at MKW (11.14 ± 0.67 mm a⁻¹). This is also the only site where retreat rates in the first 10 m are exceeded by retreat rates in more distal sections. due to continuing mass wasting from a rockfall scarp initiated in the 2000s and located about 15 m above the current glacier surface.

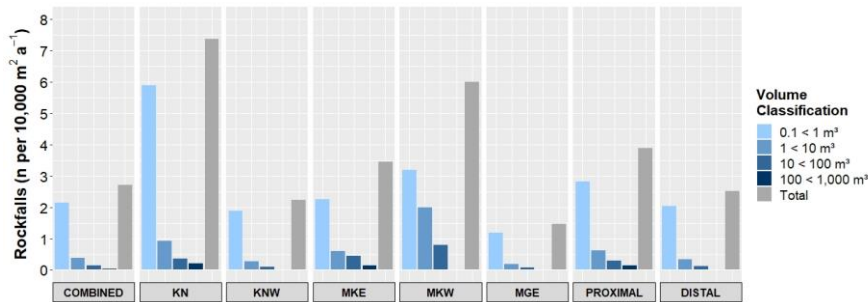
450 4.3 Rockfall Frequencies

To compare rockfall frequency across rockwalls, rockfall numbers were normalized for rockwall size (Fig. 6). Averaged over all five monitored rockwalls and the entire six-year monitoring period, 2.7 rockfalls per 10,000 m² a⁻¹ were registered. Maximum numbers were recorded at KN (n = 7.4) followed by MKW (n = 6.0) while the lowest numbers were found at MGE (n = 1.5).

Kommentiert [IH16]: Figure 5 now contains error bars.

Kommentiert [IH17]: Modified following RC2 (A. Heimsath):

RC2 (A. Heimsath) originally wrote:
"this is a study compiling 6 years' worth of repeat LIDAR scans of the same glacial features. This needs to be explicitly addressed and acknowledged in the discussion of results as well as in the introduction."



455 **Figure 6: Normalized rockfall numbers (n per 10,000 m² a⁻¹) for all monitored rockwalls. Rockfall frequency decreases exponentially with increasing rockfall size, 80 % of all rockfalls rank in the smallest size class (0.1-1 m³).**

Rockfall frequency follows a power-law decreases exponentially with increasing rockfall size. Almost 80 % of all rockfalls fall in the smallest size class (0.1-1 m³) while the next larger size class (1-10 m³) comprises 14 % and the two largest size classes (10-100 m³, 100-1,000 m³) 6 % and 1 %, respectively. The frequency pattern is rather similar for all rockwalls, and only the Magnetkoepl rockwalls (MKE, MKW) show some minor deviations. Here, the smallest size class represents a relatively low share (65 % and 53 %, respectively), whereas the larger size classes account for a comparatively high proportion (see supplement of Hartmeyer et al., 2020submitted (Table S3) for full details).

460 The difference between rockfall frequency in proximal areas (n = 3.9) and distal areas (n = 2.5) is considerable yet less pronounced than the (eightfold) difference between proximal (7.6 mm a⁻¹) and distal (0.9 mm a⁻¹) rockwall retreat rates. Proximal rockfall frequency exceeds distal rockfall frequency for all size classes. The discrepancy between proximal and distal rockfall frequency grows with rockfall size. Rockfalls > 10 m³ constitute 10 % of all proximal rockfalls, where as in distal areas only around 5 % of all rockfalls exceed 10 m³. Rockfalls > 100 m³ represent around 4 % of all proximal rockfalls (< 1 % in distal areas) and thus occur 8.6 times more often in proximal areas than in distal areas. Low magnitudes represent a smaller share in proximal areas (73 %) and a larger share in distal areas (82 %).

470

Kommentiert [IH18]: Modified following suggestion by RCI (G. Bennett)

4.4 Magnitude-Frequency Distributions

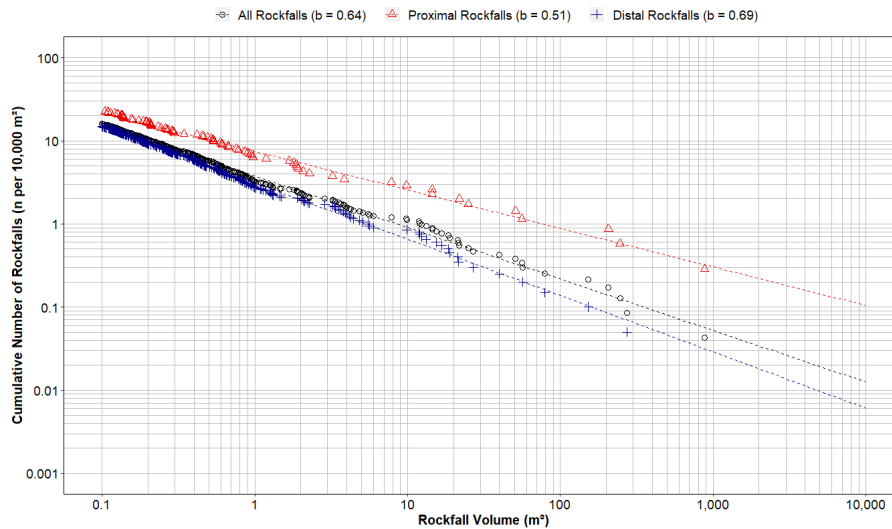


Figure 7: Magnitude-frequency distribution for (i) all detected rockfalls, (ii) proximal rockfalls and (iii) distal rockfalls. The power law exponent (b) determines the slope of the regression line (straight line in log-log space). Proximal rockfalls ($b = 0.51$) are fitted by a flatter regression line than distal rockfalls ($b = 0.69$) pointing to an increased frequency of large rockfalls in the vicinity of the glacier (i.e. in areas more recently exposed by glacier retreat).

To further characterize spatiotemporal rockfall variations, the magnitude-frequency distributions were fitted using a power-law. The resulting distinct negative power law distribution extends over four orders of magnitude and tails off towards high magnitudes. Including all events the power law exponent is $b = 0.64$ (Fig. 7). Rockfall magnitude-frequency distributions for proximal rockfalls yield an exponent $b = 0.51$ and for distal rockfalls the exponent $b = 0.69$. This significant difference between proximal and distal rockfall magnitude-frequency distributions is primarily caused by an increased frequency of large rockfalls in proximal rockwall sections.

Accounting for the stochastic nature of rockfall processes, the robustness of the power-law-fit was estimated by a bootstrapping simulation. Results demonstrated only minimal variations of the power law exponent b for the entire ($0.64^{+0.04}_{-0.03}$), proximal ($0.51^{+0.07}_{-0.05}$), and distal dataset ($0.69^{+0.04}_{-0.03}$) at a 95 % confidence interval. To selectively examine the robustness of the analyses and the sensitivity of the regression to individual rare events, the power-law-fits were recalculated after omitting the five largest events (rockfalls $> 100 \text{ m}^3$) from the data-set. The results show only minor deviations with slightly increased power law exponents ($+0.03$) for the magnitude-frequency distribution using the reduced dataset ($+0.08$ for proximal rockfalls).

Kommentiert [IH19]: Sensitivity analysis was expanded following suggestions by RC2 (A. Heimsath) and reviewers of the companion paper.

+0.02 for distal rockfalls). The large rockfalls recorded (100-1,000 m³) do not fundamentally alter the regression underlining the robustness of the magnitude-frequency relationships.

Ignoring lithological and topographic constraints and extrapolating the inferred power law beyond the upper end of the observed magnitude spectrum (~ 1,000 m³) allows rough theoretical estimates of recurrence intervals of high-magnitude events. For rockfalls > 10,000-1,000,000 m³ a power-law-predicted return period of around four to 20 years is indicated while rockfalls > 10,000 m³ (> 100,000 m³) recur approximately once in a century every 25 years (100 years). With increasing rockfall magnitude proximal and distal regression lines increasingly diverge. Normalized for rockwall size, rockfalls > 1,000-10,000 m³ are almost around 20 ten times more likely in proximal rockwall sections than in distal rockwall sections and (40) about 15 times (25 times) more likely for rockfalls > 10,000 m³ (>> 100,000 m³) (Fig. 7).

5 Discussion

In the present study five cirque walls were monitored with terrestrial LiDAR for six consecutive years (2011-2017). In the ensuing section we relate our findings to similar studies carried out in high-alpine environments and discuss potential implications for erosional processes in cirques and magnitude-frequency relationships in a changing climate.

5.1 Cirque Erosion

Erosional processes are both, highly discontinuous and unsteady over time (Sadler, 1981), particularly in paraglacial environments (Ballantyne, 2002; McColl, 2012). Erosion rates recorded during short observation periods are therefore unlikely to accurately reflect long-term rockwall retreat over geological time scales (Krautblatter et al., 2012). High-magnitude events occur with lower frequency and are usually undersampled, contributing to a systematic underestimation of long-term rockwall retreat (e.g. Strunden et al., 2015). Observations made during periods of elevated geomorphic activity result in an overestimation of long-term rates (e.g. Ballantyne and Benn, 1994). Interpretation of short-term erosion records in a broader landscape evolution context thus requires careful consideration of the respective geomorphological setting.

To date, only few erosion-retreat rate estimates have been reported for cirques (see reviews in Benn and Evans, 2010; Sanders et al., 2013; Barr and Spagnolo, 2015). Investigations carried out in cirques in the Sangre de Cristo Range, USA (Grout, 1979), Kråkenes, Norway (Larsen and Mangerud, 1981), the Ben Ohau Range, New Zealand (Brook et al., 2006), the Annapurna Range, India (Heimsath and McGlynn, 2008), and the Rocky Mountains, Canada (Sanders et al., 2013) all report (long-term) erosion-rockwall retreat rates around or below 1 mm a⁻¹ (Tab. 1). Recent extensive compilations of rockwall retreat rates from periglacial environments (not restricted to cirques) yield similar results, with rates mostly below 1 mm a⁻¹ (de Haas et al., 2015; Ballantyne, 2018).

Direct cross-study comparison is difficult due to differing study designs and key environmental factors (Barr and Spagnolo, 2015). Still, the mean retreat rate at the Kitzsteinhorn of just under 2 mm a⁻¹ is one of the highest values published worldwide. Recent extensive compilations of rockwall retreat rates from periglacial environments (not restricted to cirques) yield similar

Kommentiert [IH20]: Recurrence intervals $\geq 1,000 \text{ m}^3$ were added.

Kommentiert [IH21]: Modified following RC2 (A. Heimsath):

RC2 (A. Heimsath) originally wrote:
"this is a study compiling 6 years' worth of repeat LIDAR scans of the same glacial features. This needs to be explicitly addressed and acknowledged in the discussion of results as well as in the introduction."

520 results, with rates mostly below 1 mm a^{-1} (de Haas et al., 2015; Ballantyne, 2018). Taking it beyond Earth, Kitzsteinhorn
 results still are at the higher end of a range of time-span corrected terrestrial and extraterrestrial rockwall retreat rates as
 compiled by de Haas et al., 2015.

525 Higher erosion rates ($> 2 \text{ mm a}^{-1}$) were reported for headward cirque ~~retreat~~erosion in soft volcanic breccia in Antarctica (5.8
 mm a^{-1}) (Andrews and LeMasurier, 1973), for headwalls above rock glaciers in the Swiss Alps (2.5 mm a^{-1}) (Barsch, 1977),
 530 the French Alps (2.5 mm a^{-1}) (Francou, 1988) and West Greenland (5 mm a^{-1}) (Humlum, 2000), for a footwall location at Mt.
 Eiger in the Swiss Alps (Mair et al., 2019), for a very humid and tectonically active glaciated basin in the Southern Alps of
 New Zealand (5.6 mm a^{-1}) (Hiicks et al., 1990), for selected sections of a deglaciating rocky ridge in the Swiss Alps (6.54 mm
 a^{-1}) (Kenner et al., 2011), and for cirque-wall sections in the French Alps affected by a single, large rockfall event (8.4 mm a
 $^{-1}$) (Rabatel et al., 2008). These results were, however, not derived from cirque-scale monitoring but instead reflect short-term,
 local erosion rates in selected, highly active rockwalls. Such data is better compared to the range of maximum headward
 erosion rates established at the Kitzsteinhorn, the maximum of which is 10.34 mm a^{-1} at KN.

Table 1: Comparison of published cirque wall retreat rates (extended from Sanders et al., 2013; Barr and Spagnolo, 2015)

Location	Retreat rate (mm a^{-1})	Time scale (years)	Object investigated	Method	Reference
Kråkernes, Norway	0.1	700	Cirque	Glaciolacustrine sediments	Larsen and Mangerud (1981)
Ben Ohau Range, New Zealand	0.4	7.5×10^5	Single headwall	Space for time	Brook et al. (2006)
Principal Cordillera, Argentina	0.9-1.1	10^4	Cirque	Debris volume of rock glacier	Schrott (1996)
Sangre de Cristo Range, USA	0.9-1.3	10^4	Cirque	Debris on rock glacier	Grout (1979)
Rocky Mountains, Canada	1.2	50	Cirque	Rockfall monitoring (LiDAR)	Sanders et al. (2013)
Annapurna Range, India	1.3	10^2 - 10^3	Headwall	Supraglacial sediments	Heimsath and McGlynn (2008)
Marie Byrd Land, Antarctica	5.8	3 - 8×10^5	Headwall	Landform change	Andrews and LeMasurier (1973)
European Alps, Switzerland	6.5	4	Headwall	Rockfall monitoring (LiDAR)	Kenner et al. (2011)
European Alps, France	8.4	1	Headwall	Rockfall monitoring (LiDAR)	Rabatel et al. (2008)
Present study	1.9	6	Cirque	Rockfall monitoring (LiDAR)	
Present study	10.3	6	Headwall	Rockfall monitoring (LiDAR)	

Kommentiert [IH22]: Does not refer to rockwall retreat and is therefore left out.

535 Direct cross-study comparison across various spatiotemporal scales is difficult due to differing study designs and key
 environmental factors (Barr and Spagnolo, 2015). Still, the mean retreat rate at the Kitzsteinhorn of just under 2 mm a^{-1} is one
 of the highest values published worldwide. Recent extensive compilations of mostly long-term rockwall retreat rates from

periglacial environments (not restricted to cirques) yield similar results, with rates generally below 1 mm a⁻¹ (de Haas et al., 2015; Ballantyne, 2018). Taking it beyond Earth, Kitzsteinhorn results still are at the higher end of a range of time-span corrected terrestrial and extraterrestrial rockwall retreat rates as compiled by de Haas et al., 2015 (see their figure 12 and table S1). Higher rates were reported for headwalls above rock glaciers in the Swiss Alps (2.5 mm a⁻¹) (Barsch, 1977), the French Alps (2.5 mm a⁻¹) (Francou, 1988) and West Greenland (5 mm a⁻¹) (Humlum, 2000), and for rock slopes subject to intense chemical weathering (2.5-6 mm a⁻¹) (Åckerman, 1983; Dionne and Michaud, 1986), for a footwall location at Mt. Eiger in the Swiss Alps (Mair et al., 2019).

Long-term cirque evolution is considered to show highest erosion rates during the transition to ice-free conditions, when cirques are occupied by small glaciers only. Cirque growth is thus considered being far from a steady process but meant to happen in spurts during deglacial and interglacial periods (Delmas et al., 2009; Crest et al., 2017). The data analysed here and in a companion study (Hartmeyer et al., 2020submitted) confirms such patterns and reveals considerably elevated retreat rates in recently deglaciaded glacier-proximal areas (7.6 mm a⁻¹), while more distal rockwall sections show retreat rates of less than 1 mm a⁻¹ (Fig. 5). High rates in proximal areas are directly related to glacier downwasting, which is expected to induce pronounced thermal stress, cause rock fatigue through cyclic freeze-thaw action, and lead to the first-time formation of a deep active layer in freshly deglaciaded terrain (Hartmeyer et al. 2020).

Despite the intrinsically difficult comparison of geomorphic evidence from vastly different spatiotemporal scales, our findings indicate enhanced cirque growth during deglaciation. Two subsequent process-sets potentially underscore the geomorphic significance of deglaciation-related rockfall and the correlation between glacier retreat and cirque wall dismantling. Firstly, initial thermomechanical stresses due to deglaciation-induced rock mass damage condition instabilities that persist far beyond the actual deglaciation (Graemiger et al., 2018); and secondly, the substantial input of fresh rockfall debris to the randkluft and into the sliding glacier base is likely to cause enhanced subglacial erosion and thus drive cirque erosion also over longer time scales (Sanders et al., 2013).

Rockwall retreat primarily advances along major joint intersections (Sass, 2005; Moore et al., 2009; Hartmeyer et al., 2020submitted) and therefore rockfall activity varies considerably spatially across cirque walls (Fig. 5). The highest rates overall were recorded at KN, the only of the five monitored rockwalls where inclination follows cleavage dip (~ 45 °N) and enables significant dip-slope failures of large cubic rock fragments (Fig. 2). High rates were also recorded at the Magnetkoepl (MKW, MKE) where instability in part results from intense glacial strain during past glaciations due to the Magnetkoepl's location between two ice flows (Fig. 1) providing intense abrasion.

During the six-year monitoring period headward cirque erosion at KN (10.34 mm a⁻¹ overall, 57.3 mm a⁻¹ in proximal areas) exceeded lateral cirque erosion at KNW/MKE/MKW/MGE (0.9 mm a⁻¹ overall, 2.3 mm a⁻¹ in proximal areas) by an order of magnitude. At the western cirque (sidewalls MKW, MGE), only small remnants of a backwall exist, exhibiting a similar, cataclinal discontinuity setup as KN. While this specific area was not monitored in the present study, the absence of a significant backwall provides clear evidence for intense headward erosion in the past predisposed by the mica-schist cleavage.

Kommentiert [IH23]: Modification following RC1 (G. Bennett)

RC1 (G. Bennett) originally wrote:
"You emphasize differences in the rates of cirque retreat in this paper but need to visualize how your rates compare to others and why they might differ. You mention that it is hard to compare rates over different spatial and temporal scales. Perhaps you could produce a figure or table comparing rates collected over similar spatial and temporal scales and perhaps a bit more discussion on why these might differ and why yours are so high."

Kommentiert [IH24]: Modified following suggestion by RC1 (G. Bennett)

RC1 (G. Bennett) originally wrote:
"You emphasize differences in the rates of cirque retreat in this paper but need to visualize how your rates compare to others and why they might differ. You mention that it is hard to compare rates over different spatial and temporal scales. Perhaps you could produce a figure or table comparing rates collected over similar spatial and temporal scales and perhaps a bit more discussion on why these might differ and why yours are so high."

570 The eastern cirque – confined by backwall KN and sidewalls KNW, MKE – and to a lesser degree the western cirque, display
clear north-south elongated shapes with long sidewalls (KNW, MGE) (Fig. 84). Length/width (L/W) ratios of both cirques
(1.2 for western cirque, 1.5 for eastern cirque) exceed most L/W ratios given in the literature. In an extensive review of 25
different cirque inventories containing over 10,000 cirques from around the world, Barr and Spagnolo (2015) found a mean
L/W ratio of 1.03 indicating that the majority of cirques is almost perfectly circular in shape. Deviations from circularity have
575 mostly been attributed to glaciation history (review in Barr and Spagnolo, 2013) but geological structure is considered an
important factor, too: In the Western Alps and in the uplands of North Wales cirques that cut along geological strike are more
elongated than those cutting across strike (Federici and Spagnolo, 2004; Bennett and Glasser, 2009), in the Carpathians the
dipping of bedding planes significantly influences cirque shape (Mindrescu and Evans, 2014), and in the French Pyrenees
bedrock characteristics are considered key controls of cirque shape in anisotropic schists (Delmas et al., 2015). These Cirque
580 morphologies and lithology at the Kitzsteinhorn are in line with these findings and indicate that due to highly effective
cleavage-driven sapping the headward cirque erosion (north faces) has outpaced lateral cirque erosion (west and east faces)
over extended time periods. The cataclinal backwalls thus not only affect short-term rockfall dynamics but also have a
substantial effect on long-term erosion patterns that carved today's elongated cirque (Andrews and LeMasurier, 1973; Oskin
and Burbank, 2005), which deviates significantly from ideal circularity shapes found in several orogen-scale studies of cirque
585 allometry (Federici and Spagnolo, 2004; Evans, 2006).

Kommentiert [IH25]: Modified following suggestion by RC1 (G. Bennett).

RC1 (G. Bennett) originally wrote:
"You seem to find a more elongated cirque geometry than the normal due to the effect of cataclinal back walls on erosion rates. Again, it would be interesting to see a plot visualizing the shape of this cirque in comparison to others, perhaps as a function of geological structure wherever this information is available?"

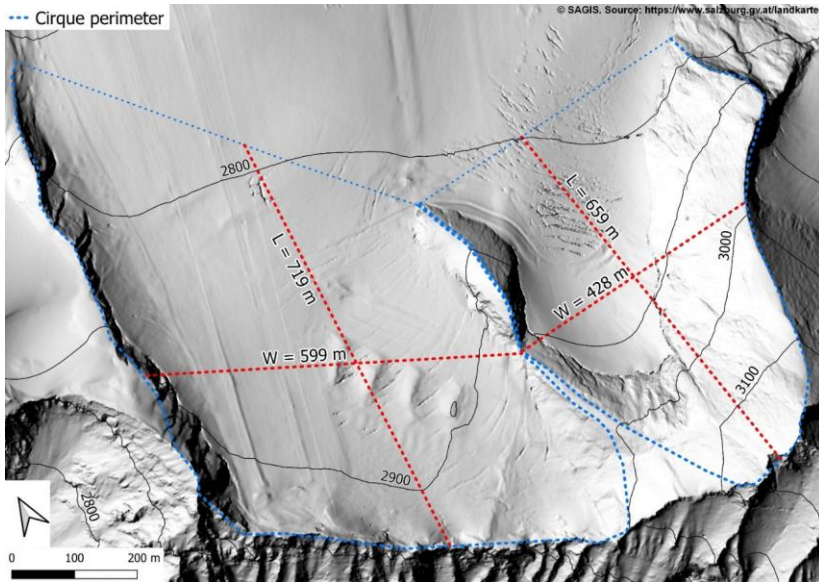


Figure 8: Hillshade of the Kitzsteinhorn and the Schmiedingerkees glacier. Width (W) and length (L) of the two cirques indicated (red dotted lines). Both cirques display a clear north-south elongated shape with high W/L ratios (1.2 for the western cirque, 1.5 for the eastern cirque) indicating effective cleavage-driven headward cirque erosion (north faces) over extended time periods.

590 5.2 Rockfall Magnitudes and Frequencies

Many earlier studies have deduced magnitude-frequency distributions to statistically describe spatiotemporal rockfall variation in various non-glacial environments (Dussauge-Peisser et al., 2002; Malamud et al., 2004). Here we present the first rockfall magnitude-frequency distribution for a deglaciating cirque (Fig. 7) that also shows characteristic negative power functions between rockfall number and rockfall volume (Hovius et al., 1997; Hungre et al., 1999; Stark and Hovius, 2001).

595 During the monitoring period about two thirds of the rockwall retreat resulted from low-frequency rockfalls > 100 m³, while smaller high-frequency events being of minor relevance only (Fig. 3). At low magnitudes, no rollover (i.e. drop-off in rockfall frequency) was registered. Rollovers are more frequent in landslide inventories (Malamud et al., 2004) but have also been reported for rockfall inventories (Strunden et al., 2015). Their existence has been attributed to physical causes (Bennett et al., 2012), more frequently also as indicative of undersampling small failures due to insufficient spatial resolution (Stark and

600 Hovius, 2001). The absence of a rollover in the inventory presented emphasizes consistent data quality and confirms an unbiased identification of rockfalls down to (at least) the cutoff threshold of 0.1 m³.

The contribution of rockfalls smaller than the specified size threshold of 0.1 m³ remains uncharacterized. Extending the power law established to the unspecified space below the 0.1 m³ cutoff threshold demonstrates that the unexamined small-magnitude

Kommentiert [IH26]: Figure added following suggestion by RC1 (G. Bennett).

RC1 (G. Bennett) originally wrote: "You seem to find a more elongated cirque geometry than the normal due to the effect of cataclinal back walls on erosion rates. Again, it would be interesting to see a plot visualizing the shape of this cirque in comparison to others, perhaps as a function of geological structure wherever this information is available?"

Kommentiert [IH27]: As suggested by RC1 (G. Bennett)

(Reference applies to landslides, not to rockfall and is therefore removed)

Kommentiert [IH28]: As suggested by RC1 (G. Bennett)

(Reference applies to landslides, not to rockfall and is therefore removed)

605 rockfalls do not provide a significant contribution to the total mass wasting budget (magnitudes 0.001-0.1 m³ contribute around 10 m³ a⁻¹). Rock slope erosion in the two studied cirques is therefore dominated by the upper end of the investigated magnitude spectrum, which provides a valuable contribution to an ongoing debate on geomorphological effectiveness that dates back to the origins of quantitative research on rockwall retreat (Heim, 1932; Jaeckli, 1957).

610 ~~To test the robustness of the analyses and the sensitivity of the regression to individual rare events, the power law fits were recalculated after omitting the five largest events (rockfalls > 100 m³) from the data set. The results show only minor deviations with slightly increased power law exponents (+0.03 for the magnitude-frequency distribution using the reduced dataset (+0.08 for proximal rockfalls, +0.02 for distal rockfalls). The large rockfalls recorded (100-1,000 m³) do not fundamentally alter the regression underlining the robustness of the magnitude-frequency relationship.~~

615 Large rockfalls are rare in the observational record, yet they are of significant relevance for the shaping of alpine landscapes (Guthrie and Evans, 2007). How observations made over a few months or years relate to landscape evolution over millennia or longer (Paine, 1985) still remains elusive. The straight mathematical extrapolation (Sect. 4.4) indicates that rockfalls ≥ 10,000 m³ (≥ 100,000 m³) recur on multi-decadal (centennial) time scales. Data from short observation periods however, can only provide a partial explanation of episodic process dynamics (Crozier, 1999). Furthermore, event frequency estimates based on short records assume long-term stationary systems (e.g. Klemeš, 1993) – an assumption that is particularly unrealistic given the severity of recent climate change. Similar to hydrological systems, estimating the event probability for rare, large events outside the observed frequency-magnitude spectrum introduces significant time scale issues (Blöschl and Sivapalan, 1995) and should be considered with caution also in slope systems.

620 Due to the episodic dynamics of rockfall processes, sensitivity estimations of observed magnitude-frequency distributions such as performed in the present study (Sect. 4.4) are of high relevance. Repeated random removal of one fifth of the events (bootstrapping simulation) as well as the targeted removal of large events (> 100 m³) did not significantly alter the resulting power law exponents and thus confirms the validity of the differences observed between proximal and distal areas.

625 Values of the power law exponent b reported in the literature correlate negatively with lithological strength, as larger events are getting less frequent as slope strength decreases. Smaller exponents are typically observed in stronger bedrock, whereas high values correspond either to slopes of weaker bedrock or to soil-mantled slopes (Bennett et al., 2012). Exponents for landslide inventories ($b \sim 1-1.5$) are therefore significantly higher than exponents for rockfall inventories, which typically range between 0.1-1 (Dussauge et al., 2003; Bennett et al., 2012). The power law exponent calculated here for distal rockwall sections ($b = 0.69$) falls in the upper range observed for rockfall distributions and clearly below the range determined for landslides. The high exponent is caused by (i) the rather high bedrock erodibility of the local calcareous micaschists (Terweh, 2012), and (ii) highly fractured zones with low lithological strength along structural weaknesses that are highly susceptible to rockfall (Hartmeyer et al., 2020submitted; Sass, 2005; Moore et al., 2009).

635 Beside lithological strength, differences in power law exponents between different studies may also be related to the temporal data resolution (given here by the survey interval). Longer return periods between surveys increase the probability of superimposition and coalescence of events and result in decreasing failure numbers and increasing failure volumes, and thus

Kommentiert [IH29]: Modified following question by RC1 (G. Bennett):

RC1 (G. Bennett) originally wrote:
"how much do you calculate this to be?"

Kommentiert [IH30]: Modified following suggestion by RC2 (A. Heimsath)

RC2 (A. Heimsath) originally wrote:
"In the discussion section, it would be helpful to have a more thorough examination of the inferred frequency magnitude curves given limits in the data. Extensive examples from the hydrological sciences address the time scale issue and perhaps some can be used as template for framing this discussion."

lower power law exponents (Barlow et al., 2012). Recent near-continuous LiDAR monitoring of cliff erosion highlights how different return periods between surveys affect magnitude-frequency distributions (Williams et al., 2018). While frequent monitoring provides more realistic magnitude-frequency distributions, longer durations between scans increase data precision and are advantageous for quantifying longer-term erosion rates due to reduced accumulative uncertainties (van Veen et al., 2017; Williams et al., 2018).

The significant differences between magnitude-frequency distributions in proximal areas ($b = 0.51$) and distal areas ($b = 0.69$) cannot be related to variations in lithology, or sampling interval, or stochastic behaviour but result from the destabilizing effect of recent ice retreat. Following deglaciation, pronounced thermal stress is induced and an active layer penetrates into the exposed bedrock (Hartmeyer et al., 2020submitted; Draebing and Krautblatter, 2019) contributing to an increased rockfall frequency close to the glacier surface. Variations between rockfall magnitude-frequency distributions in (proximal) areas directly affected by deglaciation and (distal) areas unaffected by recent deglaciation become most apparent at the upper end of the magnitude spectrum investigated: The (normalized) frequency of rockfalls $> 100 \text{ m}^3$ is almost ten times higher in proximal areas than in distal areas (Fig. 6). The increased occurrence of large rockfalls in the vicinity of the glacier leads to a flatter regression line and thus to a reduced power law exponent for proximal areas. In distal areas large rockfalls are of reduced importance and the rockfall volume distribution here shows a less pronounced rise and peaks at lower magnitudes (Fig. 4b), potentially which could theoretically contribute to an 'archway-shaped' pattern proposed for hard metamorphic rocks that has been described as "archway-shaped" distribution in earlier studies with a single maximum of mid-magnitude rockfalls (Krautblatter et al., 2012).

Substituting space for time, the results indicate clearly show how recent climate warming modifies spatiotemporal rockfall occurrence in glacial environments over decades subsequent to glacier downwasting. The patterns obtained are important for rockfall hazard assessments as they indicate that in rockwalls affected by glacier retreat historical rockfall patterns may no longer be used as indicators for future events (Sass and Oberlechner, 2012; Krautblatter and Moore, 2014). Recurrence intervals of different events are proposed to change with time since deglaciation, which is helpful information for sediment cascade modelling (e.g. Bennett et al., 2014) and hazard assessment more generally. The latter is particularly critical in cirque environments, where the presence of glacially oversteepened rockwalls and low-friction glacier surfaces promote long rockfall runout distances (Schober et al., 2012). Many high-alpine, glacier tourism areas that are enjoying growing popularity worldwide, may have to adapt risk-reduction measures in the near future (Purdie et al., 2015).

6 Conclusions

A unique six-year rockfall inventory (2011-2017) from the lateral and back-walls of two elongated glaciated cirques in the Hohe Tauern Range, Central European Alps, Austria provides unique-unprecedented insights into rockfall dynamics in deglaciating terrain. The inventory was derived from detailed terrestrial LiDAR data and represents the most extensive high-

Kommentiert [IH31]: Modification following RC1 (G. Bennett).

RC1 (G. Bennett) originally wrote:
"This needs a bit more explanation."

Kommentiert [IH32]: Modification following RC1 (G. Bennett).

RC1 (G. Bennett) originally wrote:
"I would not say that you clearly show this. You indirectly through space for time substitution, how [sic] how climate warming may alter rockfall characteristics through glacier downwasting."

Kommentiert [IH33]: Modified following RC1 (G. Bennett).

RC1 (G. Bennett) originally wrote:
"Because they are biased towards larger events?"

I think your results show how rockfall characteristics, namely magnitude frequency statistics, change with time since deglaciation. You may therefore calculate how the recurrence intervals of different events may alter with time since deglaciation, which is very helpful information for sediment cascade modeling (e.g. Bennett et al., 2014) and hazard assessments more generally."

670 resolution compilation of rockfall in cirque walls. ~~Details on site-specific deglaciation, spatial rockfall distribution and potential causes behind the observed rockfall increase in freshly deglaciated terrain are discussed in a companion study (Hartmeyer et al., 2020). In the present paper we analysed cirque wall retreat and magnitude-frequency distributions and draw the following conclusions: Besides significantly increased rockfall occurrence close to the glacier surface due to rockfall preconditioning inside the Randkluft and ice surface lowering (Hartmeyer et al., submitted), the analysis of cirque wall retreat and rockfall magnitude-frequency distributions clearly indicates;~~

Kommentiert [IH34]: Both reviewers (RC1, RC2) suggested clearer distinctions between the companion studies.

- High mean cirque wall retreat of 1.9 mm a⁻¹ ranking in the top of reported values worldwide;
- ~~— Rockfall activity is boosted in the freshly exposed rock surfaces above the glacier;~~
- Pre-existing structural weaknesses modify spatial patterns of rockfall activity;
- For glacier-proximal (0-10 m above glacier surface) areas mean retreat rates are an order of magnitude higher than, for distal areas (> 10 m);
- Enhanced cirque wall dismantling in recently deglaciated rockwall sections supports concepts of increased cirque growth during deglacial periods;
- ~~— Elongated cirque morphology fits to the pattern in cirque wall retreat rates indicating that headward erosion (10.34 mm a⁻¹ at KN) outpaces lateral erosion~~
- 685 - (0.9 mm a⁻¹ combined mean for all sidewalls) significantly. The essential factor is the direction of cleavage so that in cataclinal backwalls large dip-slope failures are facilitated and drive effective headward sapping;
- The rockfall magnitude-frequency distribution in the deglaciating cirque follows a clear negative power law distribution over four orders of magnitude (b = 0.64);
- Rockfall magnitude-frequency distributions in glacier-proximal areas (b = 0.51) and distal areas (b = 0.69) differ significantly and demonstrate a greater importance of large rockfalls in recently deglaciated rockwalls;
- 690 - Climate warming ~~-induced glacier retreat~~ enhances rockfall occurrence in ~~cirque walls~~glacial environments; a persistent pattern that will likely continue until after glaciers have fully disappeared.

Kommentiert [IH35]: As suggested by RC1 (G. Bennett)

Data availability. The rockfall inventory can be downloaded from the *mediaTUM* data repository under the following weblink: <https://mediatum.ub.tum.de/1540134>.

695 **Author contributions.** MKE, LS and JO initiated the underlying research project in 2010 and obtained the funding. ~~IHMKE, HMKE~~ and RD developed the idea and designed the study. IH and RD conducted the data acquisition and the data analysis. ~~GP performed the statistical computing.~~ All authors contributed to the discussion and interpretation of the data. IH drafted the manuscript with significant contributions from MKR and AL.

Competing interests. The authors declare that they have no conflict of interest.

700 **Acknowledgements.** [We would like to thank Georgina Bennett and Arjun Heimsath, and Associate Editor Arjen Stroeven for their thoughtful feedback and constructive reviews.](#) A. Schober kindly provided the photographs used for Fig. 2.

Financial support. This study was co-funded by the Austrian Academy of Sciences (ÖAW) (Project ‘GlacierRocks’), the Arbeitsgemeinschaft Alpenländer (ARGE ALP) (Project ‘CirqueMonHT’) and the Austrian Research Promotion Agency (FFG) (Project ‘MOREXPert’). We furthermore thank the Gletscherbahnen Kaprun AG (Project ‘Open-Air-Lab Kitzsteinhorn’) for financial and logistical support.

References

Abellán, A., Calvet, J., Vilaplana, J. M., and Blanchard, J.: Detection and spatial prediction of rockfalls by means of terrestrial laser scanner monitoring, *GEOMORPHOLOGY*, 119(3-4), 162-171, 2010.

Abellán, A., Vilaplana, J. M., Calvet, J., García-Sellés, D., and Asensio, E.: Rockfall monitoring by Terrestrial Laser Scanning – case study of the basaltic rock face at Castellfollit de la Roca (Catalonia, Spain), *NAT HAZARD EARTH SYS*, 11(3), 829-841, 2011.

[Åckerman, H. J.: Notes on chemical weathering. Kapp Linné, Spitsbergen, Fourth International Permafrost Conference Proceedings, 10-15, 1983.](#)

Allen, S. K., Cox, S. C., and Owens, I. F.: Rock avalanches and other landslides in the central Southern Alps of New Zealand: a regional study considering possible climate change impacts, *LANDSLIDES*, 8(1), 33-48, 2010.

Andrews, J. T. and LeMasurier, W. E.: Rates of Quaternary Glacial Erosion and Corrie Formation, Marie Byrd Land, Antarctica. *GEOLOGY*, 1(2), 75-80, 1973.

Arenson, L. U., Philips, M., and Springman, S. M.: Geotechnical considerations and technical solutions for infrastructure in mountain permafrost, in: *New Permafrost and Glacier Research*, edited by: Krugger, M. I. and Stern, H. P., Nova Science Publishers, New York, USA, 3-50, 2009.

Ballantyne, C. K. and Benn, D. I.: Paraglacial Slope Adjustment and Resedimentation Following Recent Glacier Retreat, Fabergstolsdalen, Norway, *ARCTIC ALPINE RES*, 26(3), 255-269, 1994.

Ballantyne, C. K.: Paraglacial geomorphology, *QUATERNARY SCI REV*, 21(18-19), 1935-2017, 2002.

Ballantyne, C. K.: *Periglacial Geomorphology*. John Wiley and Sons, Chichester, 2018.

Barlow, J., Lim, M., Rosser, N., Petley, D., Brain, M., Norman, E., and Geer, M.: Modeling cliff erosion using negative power law scaling of rockfalls, *GEOMORPHOLOGY*, 139-140, 416-424, 2012.

[Barr, I. D. and Spagnolo, M.: Palaeoglacial and palaeoclimatic conditions in the NW Pacific, as revealed by a morphometric analysis of cirques upon the Kamchatka Peninsula. *GEOMORPHOLOGY*, 192, 15–29, 2013.](#)

Barr, I. D. and Spagnolo, M.: Glacial cirques as palaeoenvironmental indicators: their potential and limitations, *EARTH-SCI REV*, 151, 48-78, 2015.

Barsch, D.: Eine Abschätzung von Schuttproduktion und Schutttransport im Bereich aktiver Blockgletscher der Schweizer Alpen, *Z GEOMORPHOL.*, 28, 148-160, 1977.

Benn, D. I. and Evans, D. J. A.: *Glaciers & Glaciation*, Routledge Taylor & Francis Group, London and New York, 2010.

Bennett, M. R. and Glasser, N. F.: *Glacial Geology*, Wiley-Blackwell, Chichester, UK, 2009.

735 Bennett, G. L., Molnar, P., Eisenbeiss, H., and McArdell, B. W.: Erosional power in the Swiss Alps: characterization of slope failure in the Illgraben, *EARTH SURF PROC LAND*, 37(15), 1627-1640, 2012.

[Bennett, G. L., Molnar, P., McArdell, B. W., and Burlando, P.: A probabilistic sediment cascade model of sediment transfer in the Illgraben, *Water Resources Research*, 50, 1225-1244, 2014.](#)

740 Bieniawski, Z. T.: Classification of Rock Masses for Engineering: The RMR System and Future Trends, in: *Comprehensive rock engineering, Principles, practice & projects*, edited by: Hudson, J. A. and Brown E. T., First Edition, Pergamon Press, New York, USA, 553-573, 1993.

[Blöschl, G. and Sivapalan, M.: Scale issues in hydrological modelling: A review, *Hydrological Processes*, 9\(3-4\), 251-290, 1995.](#)

745 Bommer, C., Phillips, M., and Arenson, L. U.: Practical recommendations for planning, constructing and maintaining infrastructure in mountain permafrost, *PERMAFROST PERIGLAC*, 21(1), 97-104, 2010.

Brocklehurst, S. H. and Whipple, K. X.: Glacial erosion and relief production in the Eastern Sierra Nevada, California, *GEOMORPHOLOGY*, 42(1-2), 1-24, 2002.

750 Brook, M. S., Kirkbride, M. P., and Brock, B. W.: Cirque development in a steadily uplifting range: rates of erosion and long-term morphometric change in alpine cirques in the Ben Ohau Range, New Zealand, *EARTH SURF PROC LAND*, 31(9), 1167-1175, 2006.

[Brunetti, M. T., Guzzetti, F., and Rossi, M.: Probability distributions of landslide volumes, *Nonlinear Processes in Geophysics*, 16, 179-188, 2009.](#)

Chen, Y. and Medioni, G.: Object modelling by registration of multiple range images, *IMAGE VISION COMPUT*, 10(3), 145-155, 1992.

755 Clauset, A., Shalizi, C. R., and Newman, M. E. J.: Power-Law Distributions in Empirical Data, *SIAM REV*, 51(4), 661-703, 2009.

Cornelius, H. and Clar, E.: Erläuterungen zur geologischen Karte des Glocknergebietes, Geologische Bundesanstalt, Vienna, 32 pp., 1935.

760 Cossart, E., Braucher, R., Fort, M., Bourlès, D. L., and Carcaillet, J.: Slope instability in relation to glacial debuitressing in alpine areas (Upper Durance catchment, southeastern France): Evidence from field data and ¹⁰Be cosmic ray exposure ages, *GEOMORPHOLOGY*, 95(1-2), 3-26, 2008.

Crest, Y., Delmas, M., Braucher, R., Gunnell, Y., and Calvet, M.: Cirques have growth spurts during deglacial and interglacial periods: Evidence from ¹⁰Be and ²⁶Al nuclide inventories in the central and eastern Pyrenees, *GEOMORPHOLOGY*, 278, 60-77, 2017.

- 765 [Crozier, M. J.: The frequency and magnitude of geomorphic processes and landform behaviour, *Zeitschrift für Geomorphologie N.F. Supplement Volumes 115*, 35-50, 1999.](#)
- de Haas, T., Conway, S. J., and Krautblatter, M.: Recent (Late Amazonian) enhanced backweathering rates on Mars: Paracratering evidence from gully alcoves, *J GEOPHYS RES-PLANET*, 120(12), 2169-2189, 2015.
- Delmas, M., Calvet, M., and Gunnell, Y.: Variability of Quaternary glacial erosion rates – A global perspective with special reference to the Eastern Pyrenees, *QUATERNARY SCI REV*, 28(5-6), 484-498, 2009.
- 770 [Delmas, M., Gunnell, Y., and Calvet, M.: A critical appraisal of allometric growth among alpine cirques based on multivariate statistics and spatial analysis, *GEOMORPHOLOGY*, 228, 637-652, 2015.](#)
- Densmore, A. L., Anderson, R. S., McAdoo, B. G., and Ellis, M. A.: Hillslope Evolution by Bedrock Landslides, *SCIENCE*, 275(5298), 369-372, 1997.
- 775 Derron, M.-H. and Jaboyedoff, M.: Preface "LIDAR and DEM techniques for landslides monitoring and characterization", *NAT HAZARD EARTH SYS*, 10(9), 1877-1879, 2010.
- [Dionne, J. C. and Michaud, Y. : Note sur l'altération chimique en milieu périglaciaire, Hudsonie, Québec subarctique, *Revue de Geomorphologie Dynamique*, 35\(3\), 81–92, 1986.](#)
- Draebing, D. and Krautblatter, M.: The Efficacy of Frost Weathering Processes in Alpine Rockwalls, *GEOPHYS RES LETT*, 46(12), 6516-6524, 2019.
- 780 Dussauge-Peisser, C., Helmstetter, A., Grasso, J.-R., Hantz, D., Desvarreux, P., Jeannin, M., and Giraud, A.: Probabilistic approach to rock fall hazard assessment: potential of historical data analysis, *NAT HAZARD EARTH SYS*, 2, 15-26, 2002.
- Dussauge, C., Grasso, J.-R., and Helmstetter, A.: Statistical analysis of rockfall volume distributions: Implications for rockfall dynamics, *J GEOPHYS RES-SOL EA: Solid Earth*, 108(B6), 2003.
- 785 Duca, S., Occhiena, C., Mattone, M., Sambuelli, L., and Scavia, C.: Feasibility of Ice Segregation Location by Acoustic Emission Detection: A Laboratory Test in Gneiss, *PERMAFROST PERIGLAC*, 25(3), 208-219, 2014.
- Evans, I. S.: Process and form in the erosion of glaciated mountains, in: *Process and Form in Geomorphology*, edited by: Stoddart, D. R., Routledge, London, UK, 145–174, 1997.
- Evans, I. S.: Allometric development of glacial cirque form: Geological, relief and regional effects on the cirques of Wales, *GEOMORPHOLOGY*, 80(3-4), 245-266, 2006.
- 790 Ewald, A., Hartmeyer, I., Keuschnig, M., Lang, A., and Otto, J.-C.: Fracture Dynamics In An Unstable, Deglaciating Headwall, Kitzsteinhorn, Austria, EGU General Assembly, Vienna, Austria, 7–12 April 2019, EGU2019-3055, 2019.
- Federici, P. R. and Spagnolo, M.: Morphometric analysis on the size, shape and areal distribution of glacial cirques in the maritime alps (western french-italian alps), *GEOGR ANN A*, 86(3), 235-248, 2004.
- 795 Fischer, A., Olefs, M., and Abermann, J.: Glaciers, snow and ski tourism in Austria's changing climate, *ANN GLACIOL*, 52(58), 89-96, 2011.
- Fischer, A., Patzelt, G., AchRAINER, M., Groß, G., Lieb, G. K., Kellerer-Pirklbauer A., and Bendler G.: *Gletscher im Wandel: 125 Jahre Gletschermessdienst des Alpenvereins*, Springer Spektrum, Berlin, Heidelberg, Germany, 2018.

- Fischer, L., Kääh, A., Huggel, C., and Noetzli, J.: Geology, glacier retreat and permafrost degradation as controlling factors of slope instabilities in a high-mountain rock wall: the Monte Rosa east face, *NAT HAZARD EARTH SYS*, 6(5), 761-772, 2006.
- Fischer, L., Purves, R. S., Huggel, C., Noetzli, J., and Haerberli, W.: On the influence of topographic, geological and cryospheric factors on rock avalanches and rockfalls in high-mountain areas, *NAT HAZARD EARTH SYS*, 12(1), 241-254, 2012.
- Francois, B. : L'eboulisation en Haute Montagne (Alpes, Andes). Contribution à l'étude du système corniche-éboulis en milieu periglaciaire, These d'Etat, Editec, Caen, France, 696 pp., 1988.
- Gardner, J. S.: Evidence for Headwall Weathering Zones, Boundary Glacier, Canadian Rocky Mountains, *J GLACIOL*, 33(113), 60-67, 1987.
- Gillespie, C. S.: Fitting Heavy Tailed Distributions: The poweRlaw Package, *J STAT SOFTW*, 64(2), 2015.
- Grämiger, L., Moore, J. R., Gischig, V. S., and Loew, S.: Thermomechanical Stresses Drive Damage of Alpine Valley Rock Walls During Repeat Glacial Cycles, *J GEOPHYS RES-EARTH*, 123(10), 2620-2646, 2018.
- Grout, M.: Amount and rate of Holocene cirque erosion, Northern Sangre de Cristo Mountains, Colorado, *Geological Society of America Abstracts with Programs*, 11, 273-274, 1979.
- [Guthrie, R. H. and Evans, S. G.: Work, persistence, and formative events: The geomorphic impact of landslides, *GEOMORPHOLOGY*, 88, 266-275, 2007.](#)
- Guzzetti, F., Reichenbach, P., and Wieczorek, G. F.: Rockfall hazard and risk assessment in the Yosemite Valley, California, USA, *NAT HAZARD EARTH SYS*, 3(6), 491-503, 2003.
- Hales, T. C. and Roering, J. J.: Climate-controlled variations in scree production, Southern Alps, New Zealand, *GEOLOGY*, 33(9), 701-704, 2005.
- Hallet, B.: Glacial Abrasion and Sliding: their Dependence on the Debris Concentration in Basal Ice, *ANN GLACIOL*, 2, 23-28, 1981.
- Hartmeyer, I., Keuschnig, M., and Schrott, L.: A scale-oriented approach for the long-term monitoring of ground thermal conditions in permafrost-affected rock faces, Kitzsteinhorn, Hohe Tauern Range, Austria, *AUSTRIAN J EARTH SCI*, 105(2), 128-139, 2012.
- Hartmeyer, I., Delleske, R., Keuschnig, M., Krautblatter, M., Lang, A., Schrott, L., and Otto, J.-C.: Current glacier recession causes significant rockfall increase: The immediate paraglacial response of deglaciating cirque walls, *EARTH SURF DYNAM*
- [Discussions, 2020submitted.](#)
- Heckmann, T., Bimböse, M., Krautblatter, M., Haas, F., Becht, M., and Morche, D.: From geotechnical analysis to quantification and modelling using LiDAR data: a study on rockfall in the Reintal catchment, Bavarian Alps, Germany, *EARTH SURF PROC LAND*, 37(1), 119-133, 2011.
- Heim, A.: Bergsturz und Menschenleben, Beiblatt zur Vierteljahrsschrift der Naturforschenden Gesellschaft Zürich 77, 218 pp., 1932.
- [Heimsath, A. M., and McGlynn, R.: Quantifying periglacial erosion in the Nepal high Himalaya. *Geomorphology*, 97, 5-23, 2008.](#)

- Hicks, D. M., McSaveney, M. J., and Chinn, T. J. H.: Sedimentation in Proglacial Ivory Lake, Southern Alps, New Zealand, *ARCTIC ALPINE RES*, 22(1), 26-42, 1990.
- 835 Hoeck, V., Pestal, G., Brandmaier, P., Clar, E., Cornelius, H., Frank, W., Matl, H., Neumayr, P., Petrakakis, K., Stadlmann, T., and Steyrer, H.: Geologische Karte der Republik Österreich, Blatt 153 Großglockner, Geologische Bundesanstalt, Vienna, 1994.
- Holm, K., Bovis, M., and Jakob, M.: The landslide response of alpine basins to post-Little Ice Age glacial thinning and retreat in southwestern British Columbia, *GEOMORPHOLOGY*, 57(3-4), pp.201-216, 2004.
- 840 Hooke, R. L.: Positive feedbacks associated with erosion of glacial cirques and overdeepenings, *GEOL SOC AM BULL*, 103(8), 1104-1108, 1991.
- Hovius, N., Stark, C. P., and Allen, P. A.: Sediment flux from a mountain belt derived by landslide mapping, *GEOLOGY*, 25(3), 231-234, 1997.
- Humlum, O.: The geomorphic significance of rock glaciers: estimates of rock glacier debris volumes and headwall recession rates in West Greenland, *GEOMORPHOLOGY*, 35(1-2), 41-67, 2000.
- 845 Hungr, O., Evans, S. G., and Hazzard, J.: Magnitude and frequency of rock falls and rock slides along the main transportation corridors of southwestern British Columbia, *CAN GEOTECH J*, 36(2), 224-238, 1999.
- Iverson, N. R.: Potential effects of subglacial water-pressure fluctuations on quarrying, *J GLACIOL*, 37(125), 27-36, 1991.
- Jaeckli, H.: *Gegenwartsgeologie des bündnerischen Rheingebiets, ein Beitrag zur exogenen Dynamik alpiner Gebirgslandschaften, Beitrage zur Geologie der Schweiz, Geotechnische Serie 36, 136 pp., 1957.*
- 850 Johnson, W. D.: The Profile of Maturity in Alpine Glacial Erosion, *The Journal of Geology*, 12(7), 569-578, 1904.
- Kenner, R., Phillips, M., Danioth, C., Denier, C., Thee, P., and Zraggen, A.: Investigation of rock and ice loss in a recently deglaciated mountain rock wall using terrestrial laser scanning: Gemsstock, Swiss Alps, *COLD REG SCI TECHNOL*, 67(3), 157-164, 2011.
- 855 Keuschnig, M., Hartmeyer, I., Höfer-Öllinger, G., Schober, A., Krautblatter, M., and Schrott, L.: Permafrost-Related Mass Movements: Implications from a Rock Slide at the Kitzsteinhorn, Austria, in: *Engineering Geology for Society and Territory*, edited by: Lollino, G., Manconi, A., Clague, J. Shan, W., and Chiarle, M., Springer International Publishing, 1(48), 255-259, 2015.
- Keuschnig, M., Krautblatter, M., Hartmeyer, I., Fuss, C., and Schrott, L.: Automated Electrical Resistivity Tomography
- 860 Testing for Early Warning in Unstable Permafrost Rock Walls Around Alpine Infrastructure, *PERMAFROST PERIGLAC*, 28(1), 158-171, 2016.
- [Klemeš, V.: Probability of extreme hydrometeorological events - a different approach, in: Extreme Hydrological Events: Precipitation, Floods and Droughts, edited by: Kundzewicz, Z. W., Rosbjerg D., Simonovic, S. P., and Takeuchi, K., IAHS Publication No. 213, Wallingford, UK, 167-176, 1993.](#)
- 865 Korup, O.: Large landslides and their effect on sediment flux in South Westland, New Zealand, *EARTH SURF PROC LAND*, 30(3), 305-323, 2005.

- Krautblatter, M. and Moser, M.: A nonlinear model coupling rockfall and rainfall intensity based on a four year measurement in a high Alpine rock wall (Reintal, German Alps), *NAT HAZARD EARTH SYS*, 9(4), 1425-1432, 2009.
- 870 Krautblatter, M., Moser, M., Schrott, L., Wolf, J., and Morche, D.: Significance of rockfall magnitude and carbonate dissolution for rock slope erosion and geomorphic work on Alpine limestone cliffs (Reintal, German Alps), *GEOMORPHOLOGY*, 167-168, 21-34, 2012.
- Krautblatter, M. and Moore, J. R.: Rock slope instability and erosion: toward improved process understanding, *EARTH SURF PROC LAND*, 39(9), 1273-1278, 2014.
- Lague, D., Brodu, N., and Leroux, J.: Accurate 3D comparison of complex topography with terrestrial laser scanner: 875 Application to the Rangitikei canyon (N-Z), *ISPRS J PHOTOGRAMM*, 82, 10-26, 2013.
- Larsen, E. and Mangerud, J.: Erosion Rate of a Younger Dryas Cirque Glacier at Kråkenes, Western Norway, *ANN GLACIOL*, 2, 153-158, 1981.
- Lato, M. J., Diederichs, M. S., Hutchinson, D. J., and Harrap, R.: Evaluating roadside rockmasses for rockfall hazards using LiDAR data: optimizing data collection and processing protocols, *NAT HAZARDS*, 60(3), 831-864, 2011.
- 880 Leith, K., Moore, J. R., Amann, F., and Loew, S.: In situ stress control on microcrack generation and macroscopic extensional fracture in exhuming bedrock, *J GEOPHYS RES-SOL EA*, 119(1), pp.594-615, 2014.
- Lewis, W. V.: Glacial Movement by Rotational Slipping, *GEOGR ANN A*, 31, 146-158, 1949.
- Lim, M., Petley, D. N., Rosser, N. J., Allison, R. J., Long, A. J., and Pybus, D.: Combined Digital Photogrammetry and Time-of-Flight Laser Scanning for Monitoring Cliff Evolution, *PHOTOGRAMM REC*, 20(110), 109-129, 2005.
- 885 Lim, M., Rosser, N. J., Allison, R. J., and Petley, D. N.: Erosional processes in the hard rock coastal cliffs at Staithes, North Yorkshire. *GEOMORPHOLOGY*, 114(1-2), 12-21, 2010.
- Mair, D., Lechmann, A., Delunel, R., Yeşilyurt, S., Tikhomirov, D., Vockenhuber, C., Christl, M., Akçar, N., and Schlunegger, F.: The role of frost cracking in local denudation of steep Alpine headwalls over millennia (Mt. Eiger, Switzerland), *Earth Surf. Dynam. Discuss.*, in review, 2019.
- 890 Malamud, B. D., Turcotte, D. L., Guzzetti, F., and Reichenbach, P.: Landslide inventories and their statistical properties, *EARTH SURF PROC LAND*, 29(6), 687-711, 2004.
- Martonne, E.: Sur la formation des cirques, *ANN GEOGR*, 10(49), 10-16, 1901.
- McColl, S. T.: Paraglacial rock-slope stability. *GEOMORPHOLOGY*, 153-154, 1-16, 2012.
- 895 [Mindrescu, M., and Evans, I. S.: Cirque form and development in Romania: allometry and the buzz-saw hypothesis, *GEOMORPHOLOGY*, 208, 117-136, 2014.](#)
- Moore, J. R., Sanders, J. W., Dietrich, W. E., and Glaser, S. D.: Influence of rock mass strength on the erosion rate of alpine cliffs, *EARTH SURF PROC LAND*, 34(10), 1339-1352, 2009.
- Nguyen, H. T., Fernandez-Steegeer, T. M., Wiatr, T., Rodrigues, D., and Azzam, R.: Use of terrestrial laser scanning for engineering geological applications on volcanic rock slopes – an example from Madeira island (Portugal), *NAT HAZARD*
- 900 *EARTH SYS*, 11(3), 807-817, 2011.

Noetzi, J., Hoelzle, M., and Haerberli, W.: Mountain permafrost and recent Alpine rock-fall events: a GIS-based approach to determine critical factors, in: Proceedings of the 8th International Conference on Permafrost, Zurich, Switzerland, 21 -25 July, 2, 827-832, 2003.

905 [O'Farrell, C.R., Heimsath, A.M., Lawson, D.E., Jorgensen, L.M., Evenson, E.B., Larson, G., Denner, J.: Quantifying periglacial erosion: insights on a glacial sediment budget, Matanuska Glacier, Alaska. Earth Surface Processes and Landforms, 34, 2008-2022, 2009.](#)

Oppikofer, T., Jaboyedoff, M., and Keusen, H.-R.: Collapse at the eastern Eiger flank in the Swiss Alps, NAT GEOSCI, 1(8), 531-535, 2008.

910 Oppikofer, T., Jaboyedoff, M., Blikra, L., Derron, M.-H., and Metzger, R.: Characterization and monitoring of the Åknes rockslide using terrestrial laser scanning, NAT HAZARD EARTH SYS, 9(3), 1003-1019, 2009.

[Oskin, M. and Burbank, D. W.: Alpine landscape evolution dominated by cirque retreat, GEOLOGY, 33\(12\), 933, 2005.](#)

[Paine, A. D. M.: 'Ergodic' reasoning in geomorphology: time for a review of the term?, Progress in Physical Geography, 9, 1-15, 1985.](#)

915 Plaesken, R., Keuschnig, M., and Krautblatter M.: Systematic derivation of anchoring forces in permafrost-affected bedrock, EGU General Assembly, Vienna, Austria, 23–28 April 2017, EGU2017-14476, 2017.

Purdie, H.: Glacier Retreat and Tourism: Insights from New Zealand, MT RES DEV, 33(4), 463-472, 2013.

Purdie, H., Gomez, C., and Espiner, S.: Glacier recession and the changing rockfall hazard: Implications for glacier tourism, NEW ZEAL GEOGR, 71(3), 189-202, 2015.

920 Rabatel, A., Deline, P., Jaillet, S., and Ravel, L.: Rock falls in high-alpine rock walls quantified by terrestrial lidar measurements: A case study in the Mont Blanc area, GEOPHYS RES LETT, 35(10), 2008.

Rapp, A.: Recent Development of Mountain Slopes in Kärkevagge and Surroundings, Northern Scandinavia, GEOGR ANN A, 42(2/3), 65-200, 1960.

Ravel, L., Allignol, F., Deline, P., Gruber, S., and Ravello, M.: Rock falls in the Mont Blanc Massif in 2007 and 2008, LANDSLIDES, 7(4), 493-501, 2010.

925 Ravel, L. and Deline, P.: Climate influence on rockfalls in high-Alpine steep rockwalls: The north side of the Aiguilles de Chamonix (Mont Blanc massif) since the end of the 'Little Ice Age', HOLOCENE, 21(2), 357-365, 2010.

Ravel, L., Deline, P., Lambiel, C., and Vincent, C.: Instability of a high alpine rock ridge: the lower arête des cosmiques, mont blanc massif, France, GEOGR ANN A, 95(1), 51-66, 2013.

Richter, E.: Geomorphologische Untersuchungen in den Hochalpen, PETERMANN GEOGR MITT, 29, 1-103, 1900.

930 Romana, M.: New adjustment ratings for application of Bieniawski classification to slopes, Proceedings of the International Symposium on the Role of Rock Mechanics in Excavations for Mining and Civil Works, International Society of Rock Mechanics, Zacatecas, pp.49-53, 1985.

Rosser, N. J., Petley, D. N., Lim, M., Dunning, S. A., and Allison, R. J.: Terrestrial laser scanning for monitoring the process of hard rock coastal cliff erosion, Q J ENG GEOL HYDROGE, 38(4), 363-375, 2005.

- 935 Rosser, N. J., Lim, M., Petley, D. N., Dunning, S. A., and Allison, R. J.: Patterns of precursory rockfall prior to slope failure, *J GEOPHYS RES-EARTH*, 112(F4), 2007.
- Sadler, P. M.: Sediment Accumulation Rates and the Completeness of Stratigraphic Sections, *The Journal of Geology*, 89(5), 569-584, 1981.
- Sanders, J. W., Cuffey, K. M., Moore, J. R., MacGregor, K. R., and Kavanaugh, J. L.: Periglacial weathering and headwall
940 erosion in cirque glacier bergschrunds, *GEOLOGY*, 40(9), 779-782, 2012.
- Sanders, J. W., Cuffey, K. M., MacGregor, K. R., and Collins, B. D.: The sediment budget of an alpine cirque, *GEOL SOC
AM BULL*, 125(1-2), 229-248, 2013.
- Sass, O.: Rock Moisture Fluctuations During Freeze-thaw Cycles: Preliminary Results from Electrical Resistivity
Measurements, *Polar Geography*, 28(1), 13-31, 2004.
- 945 Sass, O.: Spatial patterns of rockfall intensity in the northern Alps, *Z GEOMORPHOL*, 138, 51-65, 2005.
- Sass, O. and Oberlechner, M.: Is climate change causing increased rockfall frequency in Austria?, *NAT HAZARD EARTH
SYS*, 12(11), 3209-3216, 2012.
- Scherler, D., Bookhagen, B., and Strecker, M. R.: Hillslope-glacier coupling: The interplay of topography and glacial dynamics
in High Asia, *J GEOPHYS RES-EARTH*, 116(F2), 2011.
- 950 Schlögel, R., Torgoev, I., De Marneffe, C., and Havenith, H.-B.: Evidence of a changing size-frequency distribution of
landslides in the Kyrgyz Tien Shan, Central Asia, *EARTH SURF PROC LAND*, 36(12), 1658-1669, 2011.
- Schober, A., Bannwart, C., and Keuschnig, M.: Rockfall modelling in high alpine terrain - validation and limitations /
Steinschlagsimulation in hochalpinem Raum - Validierung und Limitationen, *Geomechanics and Tunnelling*, 5(4), 368-378,
2012.
- 955 [Schrott, L.: Some geomorphological-hydrological characteristics of rock glaciers in the Andes, San Juan, Argentina, *Zeitschrift
für Geomorphologie*, 104, 161-173, 1996.](#)
- [Sellmeier, B.: Quantitative Parameterization and 3D-run-out Modelling of Rockfalls at Steep Limestone Cliffs in the Bavarian
Alps, Springer International Publishing, Switzerland, 2015.](#)
- Stark, C. P. and Hovius, N.: The characterization of landslide size distributions, *GEOPHYS RES LETT*, 28(6), 1091-1094,
960 2001.
- Stock, G. M., Bawden, G. W., Green, J. K., Hanson, E., Downing, G., Collins, B. D., Bond, S., and Leslar, M.: High-resolution
three-dimensional imaging and analysis of rock falls in Yosemite Valley, California, *GEOSPHERE*, 7(2), 573-581, 2011.
- Strøm, K. M.: Geomorphology of the Rondane area, *NORSK GEOL TIDSSKR*, 25, 360-378, 1945.
- Strunden, J., Ehlers, T. A., Brehm, D., and Nettesheim, M.: Spatial and temporal variations in rockfall determined from TLS
965 measurements in a deglaciated valley, Switzerland, *J GEOPHYS RES-EARTH*, 120(7), 1251-1273, 2015.
- Supper, R., Ottowitz, D., Jochum, B., Römer, A., Pfeiler, S., Kauer, S., Keuschnig, M., and Ita, A.: Geoelectrical monitoring
of frozen ground and permafrost in alpine areas: field studies and considerations towards an improved measuring technology,
NEAR SURF GEOPHYS, 12(1), 93-115, 2013.

- Terweh, S.: Geomorphologische Kartierung am Kitzsteinhorn (Hohe Tauern, Österreich) – Eine raum-zeitliche Analyse geomorphologischer Prozesse im Gletscherumfeld des Schmiedingerkees, Bachelor Thesis, University of Bonn, Germany, 67 pp., 2012.
- 970 van Veen, M., Hutchinson, D. J., Kromer, R., Lato, M., and Edwards, T.: Effects of sampling interval on the frequency - magnitude relationship of rockfalls detected from terrestrial laser scanning using semi-automated methods, *LANDSLIDES*, 14(5), 1579-1592, 2017.
- 975 Waldrop, H. A.: Arapaho Glacier: a sixty-year record. University of Colorado Studies, Series in Geology 3, 37 pp., 1964.
- Williams, J. G., Rosser, N. J., Hardy, R. J., Brain, M. J., and Afana, A. A.: Optimising 4-D surface change detection: an approach for capturing rockfall magnitude–frequency, *EARTH SURF DYNAM*, 6(1), 101-119, 2018.