

Permafrost in monitored unstable rock slopes in Norway – New insights from temperature and surface velocity measurements, geophysical surveying and ground temperature modelling

5

Bernd Etzelmüller^a, Justyna Czekirda^a, Florence Magnin^b, Pierre-Allain Duvillard^{b,**}, Ludovic Ravanel^b,
Emanuelle Malet^b, Andreas Aspaas^{a,c}, Lene Kristensen^c, Ingrid Skrede^c, Gudrun . D. Majala^c, Benjamin
Jacobs^d, Johannes Leinauer^d, Christian Hauck^e, Christin Hilbich^e, Martina Böhme^f, Reginald Hermanns^e,
Harald Ø. Eriksen^{g,h,*}, Tom Rune Lauknes^g, Michael Krautblatter^d and Sebastian Westermann^a

10

^a *Department of Geosciences, University of Oslo, Norway*

^b *EDYTEM Lab, Université Savoie Mont Blanc, CNRS, Le Bourget-du-Lac, France*

15 ^c *Norwegian Water and Energy Directorate (NVE), Oslo, Norway*

^d *Technical University Munich, Germany*

^e *Department of Geosciences, University of Fribourg, Switzerland*

^f *Geological Survey of Norway (NGU), Trondheim, Norway*

^g *NORCE Norwegian Research Centre AS, Tromsø, Norway*

20 ^h *Department of Geosciences, UiT-The Arctic University of Norway, Tromsø, Norway*

** Current employer: Multiconsult Norge AS, Tromsø, Norway*

*** Current employer: Styx 4D consulting engineers, Le Bourget-du-Lac, France*

25 **Key words:**

Permafrost, Mountains, ERT, Monitoring, Climate change, rock slope failure

Abstract

The warming and subsequent degradation of mountain permafrost within alpine areas is an important process influencing the stability of steep slopes and rock faces. The unstable and monitored slopes of Mannen (Møre and Romsdal county, southern Norway) and Gámanjunni-3 (Troms and Finnmark county, northern Norway) were classified as high-risk sites by the Norwegian Geological Survey (NGU). Failure initiation has been suggested to be linked to permafrost degradation, but the detailed permafrost distribution at the sites is unknown. Rockwall (RW) temperature loggers at both sites have measured the thermal regime since 2015, showing mean rock surface temperatures between 2.5 °C and -1.6 °C depending on site and topographic aspect. Between 2016 and 2019 we conducted 2D and 3D electrical resistivity tomography (ERT) surveys on the plateau and directly within the rock wall back scarp of the unstable slopes at both sites. In combination with geophysical laboratory analysis of rock wall samples from both sites, the ERT soundings indicate wide-spread permafrost areas, especially at Gámanjunni-3. Finally, we conducted 2D thermal modelling to evaluate the potential thermal regime, along with an analysis of available displacement rate measurements based on Global Navigation Satellite System (GNSS) and ground and satellite-based interferometric synthetic aperture radar (InSAR) methods. Surface air and ground temperatures have been warmed significantly since *c.* 1900 with 1 °C and 1.5 °C, and highest temperature are measured and modelled since 2000 at both study sites. We observed a seasonality of displacement, with increasing velocities during late winter and early spring and highest velocities in June, probably related to water pressure variations during snow melt. The displacement rates of Gámanjunni-3 rockslide co-vary with sub-surface resistivity and modelled ground temperature. Increased displacements rates seems to be associated with sub-zero ground temperatures and higher ground resistivity. This might be related to the presence of ground ice in fractures and pores close to the melting point, facilitating increased deformation. The study demonstrates and discusses the possible influence of permafrost, at least locally, on the dynamics of large rock slope instabilities.

* Corresponding author:

E-mail address: bernd.etzelmuller@geo.uio.no (Bernd Etzelmüller):

1. Introduction

Permafrost or permanently frozen ground is a globally widespread phenomenon, and covers *c.* 15% of the northern hemisphere land surface (Obu et al., 2019). Permafrost is purely thermally defined, with ground temperatures below 0 °C over at least two consecutive years (van Everdingen, 1998). In southern Norway, permafrost is widespread above *c.* 1500 m a.s.l., in northern Norway above *c.* 800 m a.s.l. (e.g. Gisnås et al., 2016a). In steep rock walls, permafrost is located several hundred meters lower than these values (Magnin et al., 2019), and many rock faces in Norway are within or close to the mountain permafrost limit. Furthermore, steep rock walls efficiently cool the ground and its surroundings because of low or lacking snow cover (Myhra et al., 2017), and they maintain strong thermal gradients in transition areas compared to more snow-covered regions, forming environments of more intense frost weathering (Myhra et al., 2019). While permafrost degradation in the lowlands of the Arctic is mainly associated with ground ice melt (Hjort et al., 2018) and/or release of greenhouse gasses (Schuur et al., 2015; Davidson and Janssens, 2006; McGuire et al., 2010), slope instability is the major concern in mountain areas (Haeberli et al., 2010; Gruber and Haeberli, 2007). An increase in rockfall and rockslide activity has been documented following atmospheric warming (Gruber and Haeberli, 2007; Ravanel et al., 2010; Fischer et al., 2012; Frauenfelder et al., 2018; Ravanel et al., 2017). Furthermore, the increase in sub-zero rock temperatures reduces shear strength in steep slopes by affecting the strength of intact rock, ice and rock-ice interfaces (Krautblatter et al., 2013; Mamot et al., 2019). The specific sensitivity of metamorphic rocks similar to those investigated in this study for temperature-dependent weakening of the rock-ice interfaces has recently been demonstrated (Mamot et al., 2020) and is complemented by rock fatigue in zones with transitional rock freezing (Jia et al., 2015; Mamot et al., 2018). Recently, large rockslide detachments in Karrat Fjord, West Greenland, were associated to permafrost degradation (Svennevig et al., 2020).

Large rockslides are the most destructive processes in terms of single event landslide disasters (Evans and DeGraff, 2002) and caused massive destruction and loss of life in historic time, hitting water bodies and causing displacement waves or filling valley bottoms (Hermanns et al., 2014; Hermanns et al., 2013b; Svennevig et al., 2020). The Norwegian Geological Survey has systematically mapped relevant areas over most of the Norwegian high-relief land area for such potentially destructive unstable slopes, and classified them according to their risk (Hermanns et al., 2013a; Majala et al., 2016). Seven unstable rock slopes have been identified as high-risk objects based on their risk to cause loss of life, and are therefore permanently monitored. At least two of them are situated within the permafrost realm or close to the lower limit of mountain permafrost in Norway: Gámanjunni-3 in Kåfjord/Troms, northern Norway (69.5°N, 20.6°E) and Mannen in Romsdalen, southern Norway, (62.5°N, 7.8°E). Both sites were deglaciated prior to the Younger Dryas (*c.c.* 12 ka BP), and showed initial displacement long after

deglaciation, with calculated ages from *c.* 7-8 ka at Mannen and *c.* 6.6-4.3 ka at Gámanjunni-3 (overview in Hilger et al. 2021). Paleo slip rates variation during the Holocene and slip initialisation have been discussed in relation to Holocene permafrost dynamics at these sites (Böhme et al., 2019; Hilger et al., 2021), and demonstrated that present movement rates are much higher than the estimated averages rates during the Holocene. While Vick et al (2020) mostly relates these instabilities to structurally controlled rock slope deformation, we hypothesize that these higher rates might be influenced in addition by a change in the ground thermal regime, and thus permafrost dynamics since the onset of atmospheric warming after the Little Ice Age (LIA).

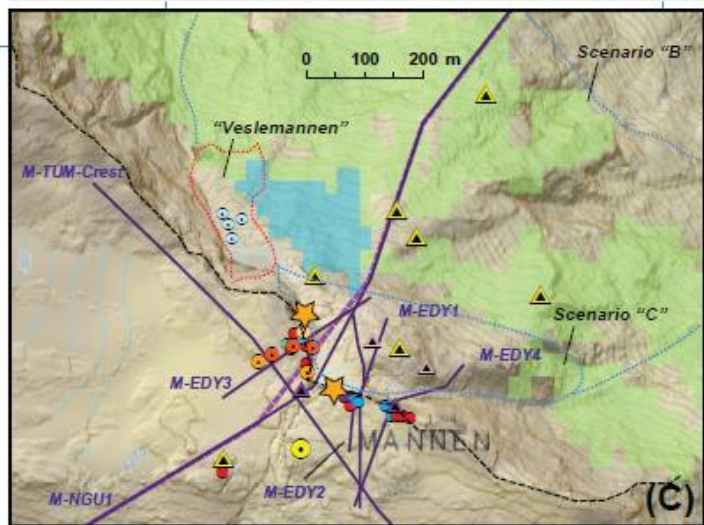
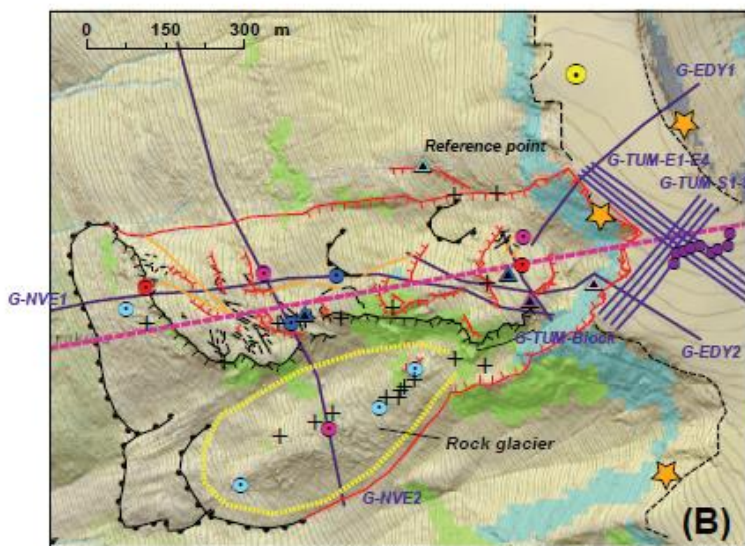
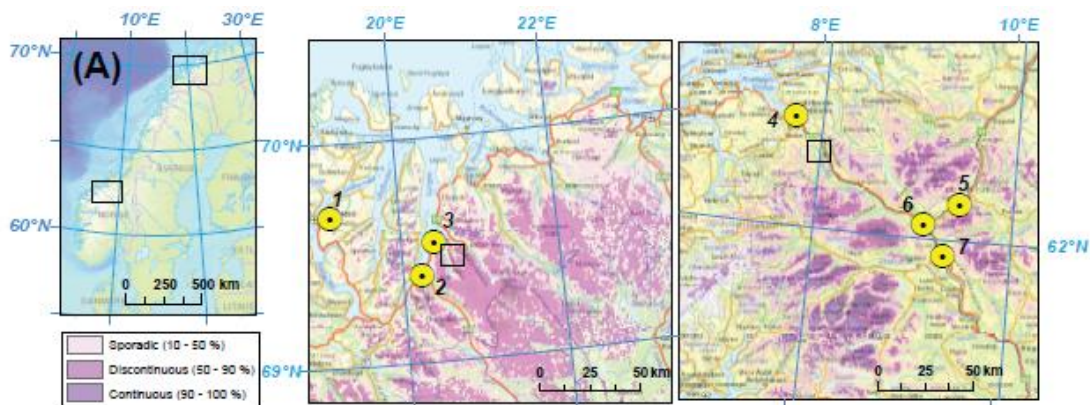
This study evaluates the permafrost conditions and recent thermal development in these two unstable slopes of Norway. We present updated movement and rock wall temperature data, electrical resistivity tomography (ERT) combined with seismic refraction tomography (RST), along with numerical modelling of recent thermal behaviour of the unstable rock slopes.

2. Setting

The study focusses on two main sites monitored by the Norwegian Water and Energy Directorate (NVE) since 2009 (Mannen) and 2016 (Gámanjunni-3), respectively (Figure 1) (Blikra et al., 2016). Both sites are located at steep, glacially over-deepened valley sides, and were presumably ice-free during the Younger Dryas (e.g. Hughes et al., 2016), facilitating thick permafrost aggradation during the late Pleistocene and early Holocene (Myhra, 2016; Hilger et al., 2021).

2.1. Gámanjunni-3 (Troms og Finnmark County)

Gámanjunni-3 is located in northern Norway on the west-facing slope of the glacially eroded Manndalen valley. The instability consists of a garnet-bearing quartz-mica schist from the Caledonian orogeny (Henderson and Saintot, 2011). Gámanjunni-3 is interpreted as one instability of 26 Mm³ of rock (Figures 1 and 2a). Two joint surfaces delimit a wedge in the form of a large block which has already descended by 150 m. The two sliding planes, oriented 217/51° and 305/58°, are dipping steeper than the slope, cutting the regional foliation which is oriented 312/8±13° (Böhme et al., 2019). The movement vector of the wedge dips 45° with a rate of 5 cm a⁻¹, while the toe moves shallower at 4 cm a⁻¹. The rockslide is moving as one wedge shaped block that is heavily fractured in the lower part, with a large boulder talus at the base and a lobate boulder accumulation along the southern flank. This boulder accumulation forms a rock glacier-like landform (Figures 1b and 2a) (Eriksen, 2018) and is discussed in more detail later.



Measurement devices

- ▲ GB In-SAR Radar
- Met. station
- ▲ Laser
- ▲ Laser target
- ▲ Corner reflector (Gám.)
- ▲ GPS (Mannen)
- + GB-INSAR (Gám.)

GST classes

- > 0 °C
- -0.1 - 0.2 °C
- -0.2 - -1 °C
- < -1 °C

BTS classes

- < -3 °C
- -2 - -3 °C
- > -2 °C

Profiles

- ERT
- GT model

Lineaments

- Back scarp
- Scarp
- Flank
- Sliding pl.
- Crevasse
- Scarp
- Front

Permafrost probability

- 0 - 0,2
- 0,2 - 0,5
- 0,5 - 0,8
- 0,8 - 1

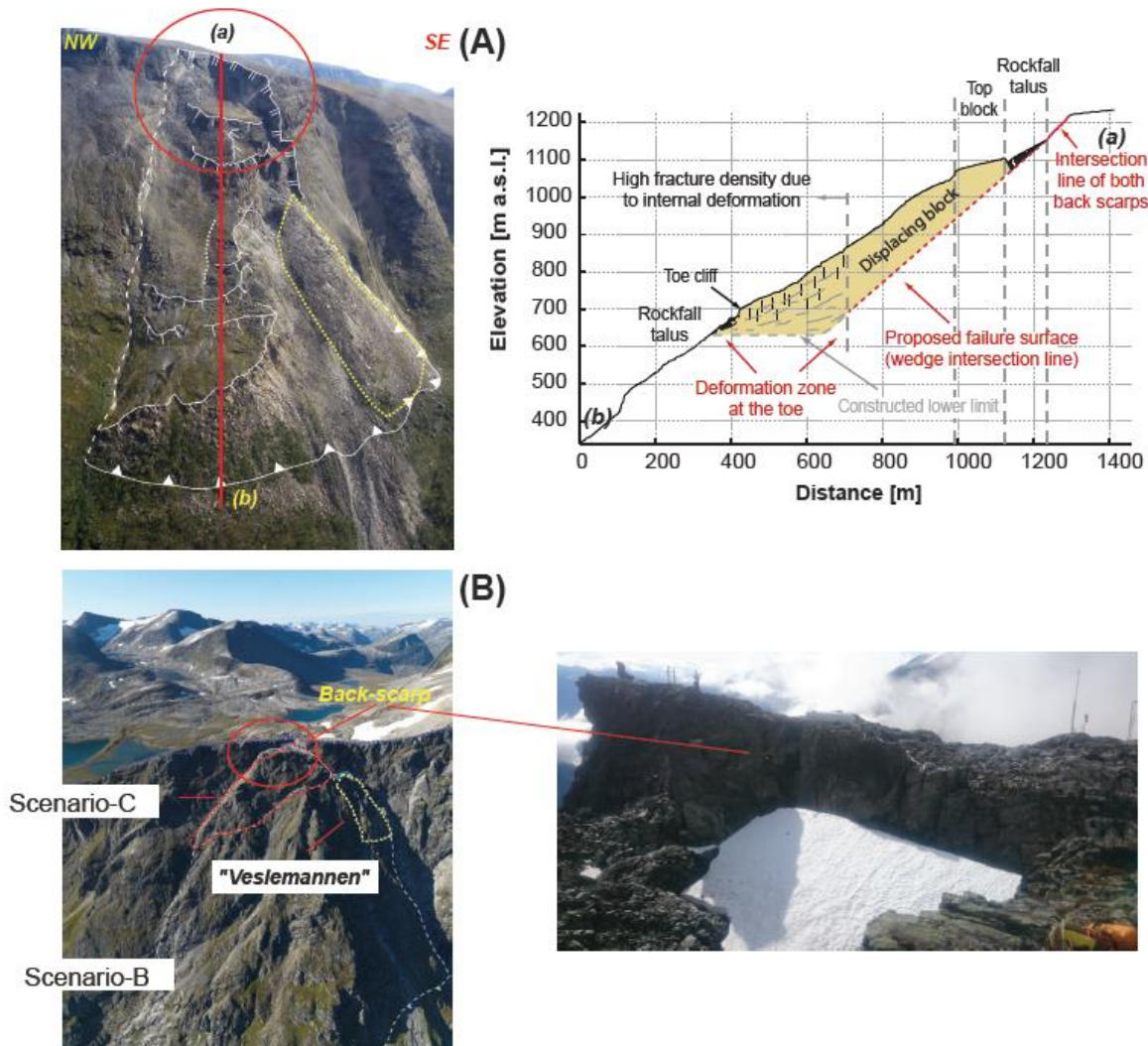
Figure 1: (A) Key map for location of the study sites. The rectangles indicate the locations of the study in southern (SN) and northern Norway (NN), respectively. The yellow circles show the climate stations used for the analysis of the rock wall surface temperature time series. (1) Tromsø (100 m a.s.l.), (2) Skibotn (10 m a.s.l.), (3) Nordnes (600 m a.s.l.), (4) Åndalsnes (16 m a.s.l.), (5) Fokkstua (950 m a.s.l.), (6) Dombås (650 m a.s.l.), (7) Dovre (450 m a.s.l.). (B) Overview map over the Gámanjunki-3 unstable area. The point symbols show measurement devices or selected points for time series extraction used in this study. The yellow stippled line denotes the outline of the rock-glacier like landform. (C): Overview map over the Mannen unstable area. The red stippled line denotes «Veslemannen» as part of the Mannen instability. The failure scenarios based are taken from Kristensen et al. (2021). The point symbols show measurement devices or selected points for time series extraction used in this manuscript. Permafrost probabilities are based on the *Cryowall map* of permafrost in steep slopes by Magnin et al. (2019). The dashed black line marks the crest outlining the plateaus. The orange stars indicate the location of the rock wall loggers. Base maps from © Statens Kartverk. GST = Mean Ground Surface Temperature. BTS = Bottom Temperature of Snow Cover (see main text).

The mean annual air temperature (MAAT) was -3.2°C during 2016-2020 on the top plateau at 1200 m a.s.l. The MAAT during the 1961-1990 normal period was -4.3°C (Lussana et al., 2018; Saloranta, 2012), thus considerably cooler than in the recent years. During the 4 years of meteorological data, mean annual precipitation was 655 mm. The ground is usually snow covered from November until June, with an approximate thickness of 1 m. The site lies in the discontinuous mountain permafrost region of northern Norway, and permafrost has been modelled or even measured within the slip face of the unstable rock slope (Magnin et al., 2019; Farbrot et al., 2013; Gisnås et al., 2016a; Obu et al., 2019).

2.2. Mannen (Møre and Romsdal County)

The Mannen rockslide is situated in the Romsdalen valley on a north-facing slope, between 900 m and c. 1300 m a.s.l. (Figure 1). The glacially over-steepened Romsdalen valley cuts through mountains comprised by gneisses that formed during the Caledonian orogeny (Saintot et al., 2012). The instability consists of an intensely folded high-grade metamorphic unit with alternating sillimanite and kyanite layers, amphibolites and pegmatites (Saintot et al., 2012). There is an exposed slip surface or back scarp, building up a 20 m high rock wall, ending in a mostly snow-filled deep rock fracture (Figure 2b). The valley floor of Romsdalen is covered by 15 large postglacial rock slope failures, and below Mannen, 6-9 rockslide deposits are mapped, of which 3 occurred in the first millennia after the deglaciation, and 3-6 slides are inferred climatically triggered during a climatic phase with increased precipitation following the Holocene Thermal Maximum (Hilger et al., 2018). A smaller rockslide “Veslemannen” on the western flank of Mannen occurred in September 2019 (Figure 2b), after episodic acceleration over several years, leading to numerous evacuations of the local population living below Mannen (Kristensen et al., 2021). Mannen was previously proposed as a translational failure (Henderson and Saintot, 2007) and wedge failure (Dahle et al., 2010). Two scenarios define the Mannen instability (Dahle et al., 2008), where the largest has no detected movement. Scenario B is approximately 10 Mm^3 of rock with displacements of 5

165 mm a⁻¹ to north dipping 20°. Scenario C has displacements of 2.5 cm a⁻¹ dipping 60°, which is steeper than the topographic surface, and possibly sinking into a graben structure.



170 **Figure 2:** (A) Image (left, © NGU) and structure-geological model (right) of Gámanjuni-3 (Böhme et al., 2016; Böhme et al., 2019). The yellow stippled line outlines the rock glacier, the red circles show the back scarp and the moving block. The white lines indicate the different parts of the rockslide (scarps, lateral border, slide front) mapped by (Eriksen et al., 2017), similar mapping also shown in Figure 1b by NGU. The geological model forms the basis for the stratigraphy used for thermal modelling (Figure 7 and Figures A1-2). (B) Overview image of the Mannen instability (©I. Skrede/NVE) and close-up image of the back-scarp. The red line shows the moving part of the slope according to scenario C. The red circle shows the back scarp and the deep fracture below, which in this picture is still snow covered. The stippled yellow line indicates the recently failed "Veslemannen" (Kristensen et al., 2021). 175

Since the installation in 2010, the meteorological station on top of the Mannen plateau measured an average annual precipitation of 1250 mm and mean air temperature of -0.5 °C. During the last normal period 1961-1990, the MAAT was -1.3 °C at the Mannen plateau. Atmospheric warming is therefore evident at this site during the last decades. The plateau is usually covered by a 2 to 3.5 m thick snow cover during the period November-June. The site lies at the lower limit of mountain permafrost, where permafrost can be expected in shaded patches or deeper fractures (Magnin et al., 2019;Gisnås et al., 2016a;Gisnås et al., 2014;Westermann et al., 2013). Recent modelling for the small rockslide “*Veslemannen*” indicated at least deep seasonal frost and a thermal influence on the dynamics of the rockslide (Kristensen et al., 2021).

3. Methods and data processing

This study uses various data series from different measurements related to climate, rockslide movement, thermal regime and subsurface conditions. All locations of the devices and profiles used in this study are given in Figure 1.

3.1. Movement of the rock slopes

For *Gámanjunki-3*, the real time monitoring was initiated in 2015, and includes Global Navigation Satellite System (GNSS) antennas, crack meters, extensometer, a laser to measure distances to a reflector plate, a meteorological station, a ground based interferometric synthetic aperture radar system (GB InSAR, sensitive to displacement towards the valley floor along the radar line-of-sight (LOS)) and web-cameras. In addition, three satellite corner reflectors were installed in 2012, and their displacement measured along satellite LOS (ascending: down and towards east, descending: down and towards west) are currently being operationally monitored using Sentinel-1 satellite-based InSAR. A time-series InSAR methodology, based on the GSAR software (Larsen et al., 2005;Lauknes et al., 2010;Eriksen et al., 2017) was used to estimate displacement rates. From snow-free scenes with a revisit period of 11 days acquired from ascending- and descending satellite geometry, two stacks of interferograms were produced using GSAR. Mean yearly velocities from both TerraSAR-X stacks (2009–2014) were combined to a 2D InSAR displacement vector surface (12 x 12 m ground resolution) with enhanced sensitivity to displacement in the east-west up-down plane. For details on processing, verification and limitations see Eriksen et al. (2017).

For *Mannen*, the real-time monitoring was initiated late in 2009. The continuous monitoring includes
210 GNSS antennas, distance measurements with two lasers, extensometers, two deep borehole
instrumentations, a meteorological station, web-cameras and two GB-InSAR systems. For this study, we
use some selected GNSS monitoring stations, the laser monitoring, the GB-InSAR and the satellite corner
reflectors to evaluate changes in movements of the unstable slopes. The location of the systems used in
this study are given in Figure 1B.

215 The distance laser sensor used at both sites is a Dimetix DLS-B 15, which measures with an accuracy of
 1.5 ± 1 mm in good weather conditions. The laser device registers 10 measurements per second, which are
averaged for every 10 minutes. The distance measured is in LOS which may deviate from the true
displacement vector direction, and daily averages are shown and used. The Trimble NetR9 GNSS
Reference Receiver with a Trimble Zephyr 2 antenna is measuring position continuously, and processes
220 an average position every 12 hours. The standard deviation calculated for a period between 1.8.2016 and
1.9.2020 is ± 0.86 mm and ± 0.69 mm in north and east direction, respectively, and ± 1.89 mm vertically.
However, one of the permanent points located outside of the unstable section of the slope showed
movement because of water intrusion under the foundation, hence the time series with reliable data is
short.

225 The ground-based radar from LiSALab is a GB InSAR system (© Ellegi Srl) (Bardi et al., 2016; Crosta et
al., 2017), placed on a concrete foundation in the respective valleys. The data were processed in the
LiSALab software using an atmospheric correction region that covers a selected and assumed stable part
of the slope. The reported data is derived primarily from 24 h averages and 3-day average measurements,
which have been used to create interferograms, where the selected time-averaging period depends on the
230 particular displacement rate in LOS at the site. The data is georeferenced to a 10x10 m DEM. At
Gámanjuni-3, time series for 8 points on the rockslide part, and 10 points on the rock glacier are extracted
and further analysed (Figure 1b).

All measurements included uncertainties and white noise in the data. To reduce these effects, we
calculated daily averages of movement rates, and filtered the data with a moving average filter, with
235 variable window sizes. This procedure allowed for identifications of long-term displacement trends and
possible seasonal variations of movement.

3.2. Measured and reconstructed rock wall temperatures

During 2015, five temperature data loggers (Geoprecision, M-Log5W-ROCK) were installed in the back
240 scarps of Gámanjuni-3 (3 loggers) and Mannen (2 loggers), recording rock surface temperatures (RST)
with a 2-h interval, and with an accuracy of $\pm 0.05^\circ\text{C}$ (Magnin et al., 2019) (Figure 1b). The installation

procedure followed the approach described by Gruber et al. (2004). To avoid rapidly fluctuating surface temperatures sensors were placed at a depth of *c.* 10 cm below the surface. We also tried to place the loggers above ledges to minimise snow influence (Magnin et al., 2019).

245 Automatic data loggers (Hobo and iButton) were placed on the Gámanjunni-3 rockslide and rock glacier in 2013 and 2014, measuring ground surface temperatures (GSTs), i.e. temperature below the snow cover, and temperatures in air-filled voids between crushed blocks below the surface (Eriksen, 2018). The GST loggers are distributed in three clusters over the rockslide, with data points on the moving block, the rock glacier and the toe area of the rockslide, and maintained by NVE today (Figure 1). At the Mannen site, 250 data loggers were placed on the plateau to measure GST (Figure 1) between fall 2015 and 2018. Below the plateau, in the upper part of “*Veslemannen*” which failed in 2019, four TinyTag (Gemini) temperature loggers were placed in fractures during two winter seasons 2014-2015 and 2015-2016. The aim of these measurements was to record the temperature at the interface between ground surface and snow cover (“bottom temperature of snow – BTS”) when the snow cover was established. These data provide valuable 255 additional thermal information of the rockslide and are used to compare numerical temperature modelling and geophysical investigations for permafrost mapping.

Both sites are equipped with automatic weather stations, measuring surface air temperatures (SAT), precipitation (P) and snow depth. To reconstruct temperature development since the end of the LIA at the study sites, both in terms of SAT and RST, two strategies are followed: First, we used gridded climate 260 data (daily SAT and P) available for all Norway on a ground resolution of 1 km since 1957. The data-set, in the following called “*seNorge*”, is established by interpolation between meteorological stations (Lussana et al., 2018), and is daily operationally updated. Secondly, for the period before 1957 until the start of the meteorological observation period, which is during the end of the 19th century in Norway, data from the weather stations on site and the rock wall loggers were combined with long-term series from 265 nearby stations using simple or multiple linear regressions. For Gámanjunni-3, a good correlation with the Tromsø weather station was obtained (Figure 1a), where the data series started in 1867. For the Mannen site, we used both the stations in Dombås and Fokstua in central southern Norway (Figure 1a), where SAT measurements reach back to 1864 and 1923, respectively. We considered R^2 -scores of above 0.7 sufficient to use these data-sets to derive upper boundary conditions for the numerical modelling.

270

3.3. Laboratory analysis of rock properties

In order to relate the resistivity results of the geophysical surveys to the freezing transition of specific rock types and approximate frozen rock temperatures, six representative rock samples from the study sites 275 were tested in the freezing laboratory at the Technical University of Munich. The two samples from

Gámanjunni-3 are fine-grained greenish gneiss with indicated schistosity (density (ρ) = 3.1 g/cm³, porosity ca. 0.7%). Some layers contain a significant high proportion of feldspar. The one sample from Nordnesfjellet (10 km NW of Gámanjunni-3) is a dark grey fine gneiss to quartz-rich mica schist (ρ = 2.8 g/cm³, porosity ca. 0.6%). Minor slightly weathered but closed clefts in different orientations and the anisotropy due to foliated minerals accounts for certain deviations in the measured laboratory arrays. These correspond to variations in the field where small-scale changes of meta-sediment rock types appear. From Mannen, the three greenish to dark grey gneiss samples are medium-grained with dark and light bands of biotite, quartz and feldspar. The sample Mannen03 is coarser with a higher proportion of cm-big feldspar minerals and therefore pronounced white bands.

The method of the resistivity calibration follows Krautblatter et al. (2010). The samples had a cuboid shape of *c.* 20x20x30 cm and a mass of 20 to 45 kg. All blocks were submerged in undisturbed tap water (473 μ S cm⁻¹ conductivity) in atmospheric pressure for at least 72 hours to approach close to natural fluid saturation and chemical equilibrium with the pore-surrounding rock material. Each sample was equipped with three lines ($L = 21$ cm) of four M6 stainless steel screws in a Wenner-type array to calculate resistivity assuming an undisturbed half-space measurement geometry as the half space with the median depth of investigation controlled by electrode spacing is significantly smaller than the sample dimensions. To overcome the challenge of loss of electrical contact upon freezing, the electrodes were fitted tightly ca. 10 mm deep into the rock. Contact grease was applied to the electrodes in order to further improve galvanic contact. Two Greisinger GMH 3750 thermometers were put in each specimen (5 and 20 mm depth) to record both the near-rock surface temperature and the temperature at mean depth of investigation (Barker, 1989) every 30 seconds. We used an ABEM Terrameter LS, operating in monitoring mode, to obtain resistivity measurements every 15 minutes while the rock specimen where going through a freeze-thaw cycle between 10 °C to -5 °C in a 1 m³ cooling box equipped with a specially designed Fryka TK1041-LK-s ventilated cooling system controlled by a temperature probe close to the sample. The cooling rate was controlled manually to not exceed a temperature gradient of more than 1 K between the temperatures at the rock surface and at mean depth of investigation. We used a low minimum current of 0.1 mA and high maximum voltage of 600 V to allow measurements even at high resistances supported by the high internal resistance of the ABEM Terrameter. Variance between repeated measurements (stacks) in the critical temperature interval of -2 to 2 °C was well below 1%.

305

3.4. Field ERT and refraction seismic tomography

We used non-invasive geophysical surveys along profile lines in order to map permafrost at the individual sites and provide information on possible ice-rich or ice-poor zones in the ground. We used Electrical

Resistivity Tomography (ERT) at all sites, and in addition refraction seismic tomography at Gámanjinni-

310 3.

The electrical resistivity distribution of the subsurface is evaluated by injecting a current, and measuring the resulting electrical potential differences along the profile. The investigation depth depends mainly on the distances between the current electrodes employed along the profile and the profile length, with larger distance giving greater penetration depth. The obtained apparent resistivity measurements have to be inverted using suitable inversion algorithms yielding the specific electrical resistivity distribution along the 2D profiles. High electrical resistivity is normally associated either with frozen conditions/ground ice occurrences or dry blocky layers. Low electrical resistivity points to (high) liquid water contents and unfrozen conditions (Hauck, 2002). At Gámanjinni-3, ERT is combined with seismic tomography. Seismic shots along the profiles produces P-waves, which velocity distribution and resulting travel times are used and applied in a subsequent data inversion. The combination of ERT and seismic refraction are used to quantify to what extent the subsurface pores are filled with ground ice, water or air (Hauck et al., 2004; Mollaret et al., 2020), by applying the «4-phase model» (4PM) (Hauck et al., 2011). The 4PM is based on both ERT and refraction seismic tomographic surveys. The combination of both methods is able to distinguish between ice (high resistivity and medium P-wave velocities), water (low resistivity and P-wave velocities) and air (high resistivity, low P-wave velocities). For modelling details, we further refer to Hauck et al. (2011) and Mewes et al. (2017).

Table 1: Electrical resistivity tomograms included into this study. Provider refers to the institution involved in the ERT survey. For G-NVE2 co-located ERT and seismic profiles were re-analysed by Hauck and Hilbich (2018).

<i>Site/Name</i>	<i>Length [m]</i>	<i>Spacing [m]</i>	<i>Elevation [m a.s.l.]</i>	<i>Protocol</i>	<i>Inst.</i>	<i>Provider</i>	<i>Reference</i>
<i>G-NVE1</i>	1150	10	1080 – 522	GradientPlus_1	ABEM SAS4000	NGU	(Böhme et al., 2016)
<i>G-NVE2</i>	1035	9	690 - 771	Wenner, Schlumberger, seismics	AGI STING	NVE	(Austria, 2016; Hauck and Hilbich, 2018)
<i>G-EDY1</i>	540	5	1096 – 1166	Wenner	ABEM LS	EDYTEM /UiO	This study
<i>G-EDY2</i>	600	5	970 – 1195	Wenner	ABEM LS	EDYTEM /UiO	This study
<i>G-TUM-S1 to -S4</i>	300	5	1180 – 1230	Wenner	ABEM LS	TUM	(Leinauer, 2017)
<i>G-TUM-E1 to -E4</i>	400	5	1220 – 1200	Wenner	ABEM LS	TUM	(Leinauer, 2017)
<i>M-NGU</i>	800	10	1254 - 960		ABEM SAS4000	NGU	(Dalsegg and Rønning, 2012)
<i>M-TUM-scarp</i>	500	5	1300 - 1250	Wenner	ABEM SAS1000	TUM	This study

<i>M-RW1</i>	200	5	1270 - 1245	Wenner	ABEM LS	EDYTEM /UiO	This study
<i>M-RW2</i>	160	2	1279 - 1252	Wenner	ABEM LS	EDYTEM /UiO	This study
<i>M-RW3</i>	200	5	1279 - 1236	Wenner	ABEM LS	EDYTEM /UiO	This study
<i>M-RW4</i>	200	5	1271 - 1238	Wenner	ABEM LS	EDYTEM /UiO	This study

330

The ERT profiles at Gámanjunni-3 and Mannen were either located on the plateaus, along the valley slopes or in the rock walls. In the rock walls we used steel screws drilled into the bedrock as electrodes, while outside the rock walls, normally steel rods were used. All measurements were carried out during late summer. At the *Gámanjunni-3* site, four major datasets were obtained between 2012 and 2019, while
335 at the *Mannen* site, two major datasets were collected in 2012 and 2018, respectively. Location and details of the profiles are given in Figure 1b and Table 1.

335

ERT data acquisition was conducted with ABEM Terrameters (SAS1000 or LS) using Wenner or Wenner-Schlumberger protocols, with the Wenner protocol providing the best signal-to-noise ratio in difficult rock wall terrains (Dahlin and Zhou, 2004). All ERT profiles were inverted using common
340 inversion parameters within the software Res2Dinv (Loke and Barker, 1995). The colour coding followed the values obtained through the temperature-depending resistivity analysis performed in the freezing lab of TUM (*cf.* section 4.1), 3 to 5 inversion iterations showed sufficient convergence without overfitting. For profiles G-NVE1 and G-NVE2 at Gámanjunni-3 (Figure 1b) the 4PM was applied to investigate relative contents of water, ice and air in the ground along the survey line (Hauck and Hilbich, 2018).

340

345

3.5. Bottom temperature of snow (BTS) survey

BTS measurement is a simple and rapid method to estimate the possibility of permafrost conditions in field. The principle is that during the late snow season, under a snow cover of at least 80 cm or more, the temperature under the snow cover is decoupled from the temperature in the atmosphere, hence is governed
350 by heat flow from the ground (Haeberli, 1973). BTS values below -3°C indicates a high probability of permafrost, while BTS above -2°C indicates no permafrost. This method has been widely used and validated in mountain areas, especially since the 1980s, and has been used also in Norwegian mountains for local permafrost mapping (e.g. Isaksen et al., 2002; Brenning et al., 2005; Lewkowicz et al., 2012). At both Gámanjunni-3 and Mannen BTS surveys were carried out on the 9. and 1. March 2017, respectively
355 (Figure 1b). The survey was done using a long stick with a thermistor mounted at the bottom. At each site the stick is penetrated through the snow, and the BTS temperature is registered using a standard multi-meter. At least two measurements are carried out at each site to address small-scale variability.

3.6. Ground temperature modelling

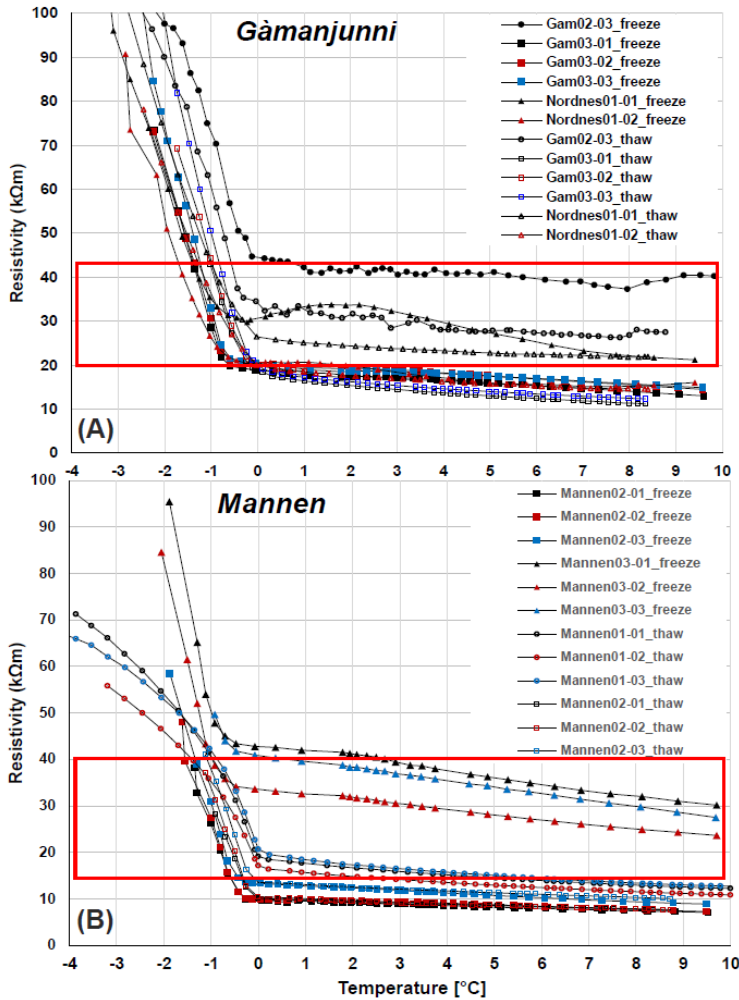
360 The transient heat flow model CryoGrid 2D (Myhra et al., 2017) solves the two-dimensional heat diffusion equation. The thermal properties (*e.g.* volumetric heat capacity and thermal conductivity) depends on temperature and material type. We used the MATLAB-based finite element method MILAMIN package (Dabrowski et al., 2008). CryoGrid 2D models conductive processes, thus non-
365 conductive heat flow processes such as convective water or air flow are neglected. The model domain is constructed as a 2D slice through a slope up to a chosen depth. An unstructured triangular mesh is generated for various subsurface thermal regions, *i.e.* regions with a distinct combination of water (liquid and ice), mineral, organic and air volumetric contents. The maximum allowed triangle area, which is a measure of the spatial resolution, increases typically with depth, and is assigned to every thermal region. We used bedrock thermal conductivity of $2.5 \text{ Wm}^{-1}\text{K}^{-1}$ for both Mannen and Gámanjunni-3 slopes. Along
370 the right and left boundaries we prescribe zero-flux boundary conditions. The lower boundary (at 6000 m depth) is defined by a geothermal heat flux of 50 mWm^{-2} (Slagstad et al., 2009).

The upper boundary conditions are GST time series for the surface nodes. To calculate GST at each node, we first used SAT extracted from *seNorge* for elevations between valley bottom and top plateau at both sites, where SAT is linearly interpolated between the surface nodes, following a lapse rate of $6.4 \text{ }^{\circ}\text{C km}^{-1}$ for Mannen and $4.8 \text{ }^{\circ}\text{C km}^{-1}$ for Gámanjunni-3 (Magnin et al., 2019). We subsequently estimate GST
375 using N_f -factors between 0 and 1 that link SAT and GST, hence account for the surface offset (Riseborough et al., 2008). The N_f -factor describes the winter surface offset due to snow coverage, where values close to 1 indicate no to little snow coverage, while values closer to 0 indicate a thick snow cover. N_f factors relate surface offsets during summer, which depends on factors such as vegetation cover, direct
380 solar radiation/shading, albedo and soil moisture. We applied empirical results derived from snow studies in Norway, relating N_f factors to annual mean snow height (Gisnas et al., 2013; Gisnås et al., 2016a). In our modelling we assume $N_f=1$ for steep rock walls (slope $> 60^{\circ}$) that are frequently snow-free, whereas values of 0.25-0.5 can be used on the mountain plateaus (slope $< 30^{\circ}$), where snow cover is thicker depending on precipitation and wind redistribution (Gisnås et al., 2016a). For the plateau, N_f was set to
385 0.5 on Gámanjunni-3 and 0.3 at Mannen due to higher snow cover at the latter site. The intermediate values of N_f are used at slope gradients between 30° and 60° .

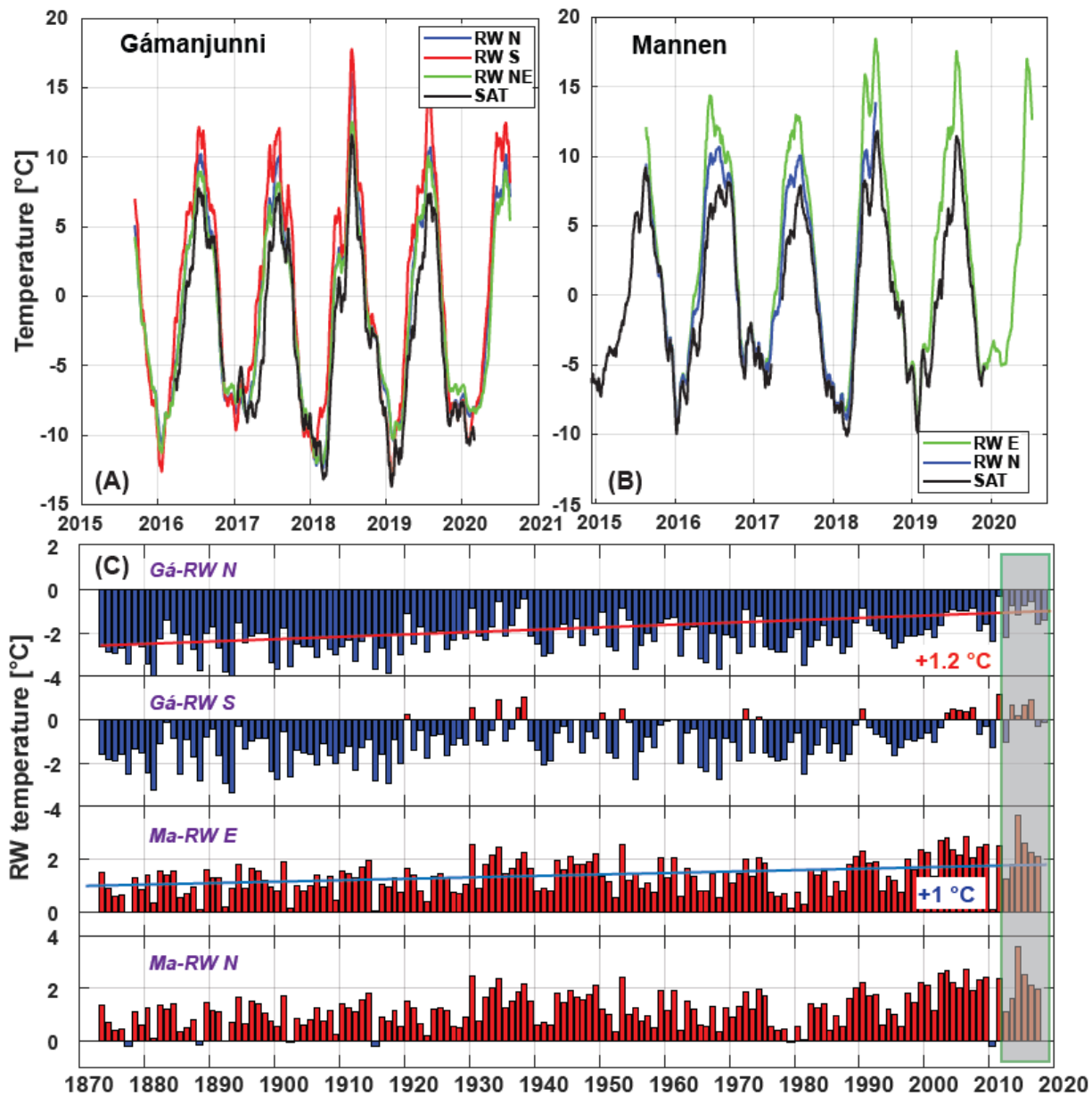
The 2D geometry of the model domains has been extracted from a gridded 1 m digital elevation model (www.hoydedata.no) along an approximately west-east (Gámanjunni-3) or south-west to north-east transect (Mannen) (Figure A1). There are normally larger temperature gradients close to the surface than
390 in deeper layers. Hence, we constructed nodes with a distance of 0.05 m at the upper boundary. The subsurface thermal regions are constructed according to the geological profile for Gámanjunni-3 (Figure 2) and our mapping of surficial sediments along the profile using orthophotos for Mannen (Figure A1).

We then applied a stratigraphy, i.e. volumetric contents of the ground constituents, for the various surficial sediment classes at both surface and depth as presented in Westermann et al. (2013) (Figure A1).

395 For both sites, the model was initialized at deglaciation. When we assume warm-based conditions at the bottom of the ice-sheet (0 °C), we used the methods to reconstruct deglaciation curves and climate data described by Hilger et al (2021). We ran the model yearly until 1st September 1873, then at weekly time steps, and in the period 1.1.2000-31.12.2018 at daily time steps.



400 **Figure 3:** Temperature-resistivity plots of all successful test series for rock samples from (A) Gámanjunni-3 and Nordnes mountain and (B) the Mannen plateau. The red rectangles denote the transition zone between frozen and unfrozen defined based on these laboratory tests. These calibrations are used for plotting in Figures 8, 9, 10, and 12 and Figures B1-2.



405

Figure 4: Measured and reconstructed rock wall (RW) surface temperatures and SAT on the plateaus at (A) Gámanjinni-3 and (B) Mannen in different topographic aspects (N=north etc). The temperature records show the differences in topographic aspect, with higher differences during spring and summer for the different aspects. (C): Reconstructed long-term annual average RW temperature for selected RW loggers at Gámanjinni (*Gá*) and Mannen (*Ma*) since 1870. The series show inter-annual variability and increasing mean temperatures of 1°C or above for the 150-year period. The rockslide and RW temperature monitoring period since 2011 is indicated by the shaded area, and denotes some of the highest temperatures during the 150-year-period.

410

4. Results

415

4.1. Laboratory analysis

The laboratory analysis relates rock temperatures to measured electrical resistivity. The rock samples from Gámanjunni-3 showed a similar pattern, with a sharp resistivity increase between 20 and 40 kΩm at the equilibrium freezing temperature of *c.* -0.5 °C (Figure 3a). For areas with electrical resistivity above this range we expect negative temperatures, below we expect unfrozen conditions. The rock samples from Mannen revealed a sharp increase of resistivity below the equilibrium freezing temperature of *c.* -0.3 °C, depending on bedrock type and freeze or thaw setting (Figure 3b). The sharp increase in resistivity was between 15 kΩm and close to 50 kΩm, a range we defined as the transition zone between freezing and thawing conditions.

425

4.2. Gámanjunni-3

Temperature monitoring and reconstruction – The three rock wall loggers at the unstable slope are all located at *c.* 1200 m a.s.l., and oriented towards south (RW-S), north (RW-N) and north-west (RW-NW), respectively (Figure 1). The RW-S site showed average rock surface temperatures of 0.05 °C between 2015 and 2019, while the two other loggers had clearly sub-zero temperatures of -1.6 °C and -1.3 °C for RW-N and RW-NW, respectively (Figure 4a). During the same period mean SAT on the plateau was -3.1 °C, showing that rock wall temperature was at least 1.5 °C higher than air temperature. For the south-oriented rock wall, close to 3 °C warmer temperatures than SAT on the plateau were recorded. The measured RW temperatures represent a period of high temperatures in comparison to the reconstructed RW temperatures since 1870, as shown in Figure 4c. At Gámanjunni-3, the north-exposed logger showed sub-zero annual RW temperatures during the whole reconstruction period, while for RW-S positive annual averages were mostly estimated since 2000, along with some years during the 1930s. The reconstructed long-term series clearly demonstrate the warming since the LIA, which increased with between 1 °C and 1.2 °C for Gámanjunni-3 and Mannen, respectively.

440

The GST loggers placed in the rockslide area (Figure 1b) showed mostly average annual temperatures below 0 °C, with some exceptions. Average annual temperatures on the toe of the rockslide at *c.* 750 m a.s.l. revealed values between -1 °C and -1.5 °C, which normally indicate high permafrost probability. On the rock glacier, annual GST values are warmer and between -1 °C and 0 °C. Close to the moving block at *c.* 1050 m a.s.l. a mean annual GST of -2 °C is measured (Eriksen, 2018).

445

The few BTS measurements available (Figure 1b) all showed values below -3°C . These observations altogether place the site into the discontinuous mountain permafrost zone (Magnin et al., 2019; Farbrot et al., 2013; Gisnås et al., 2016a).

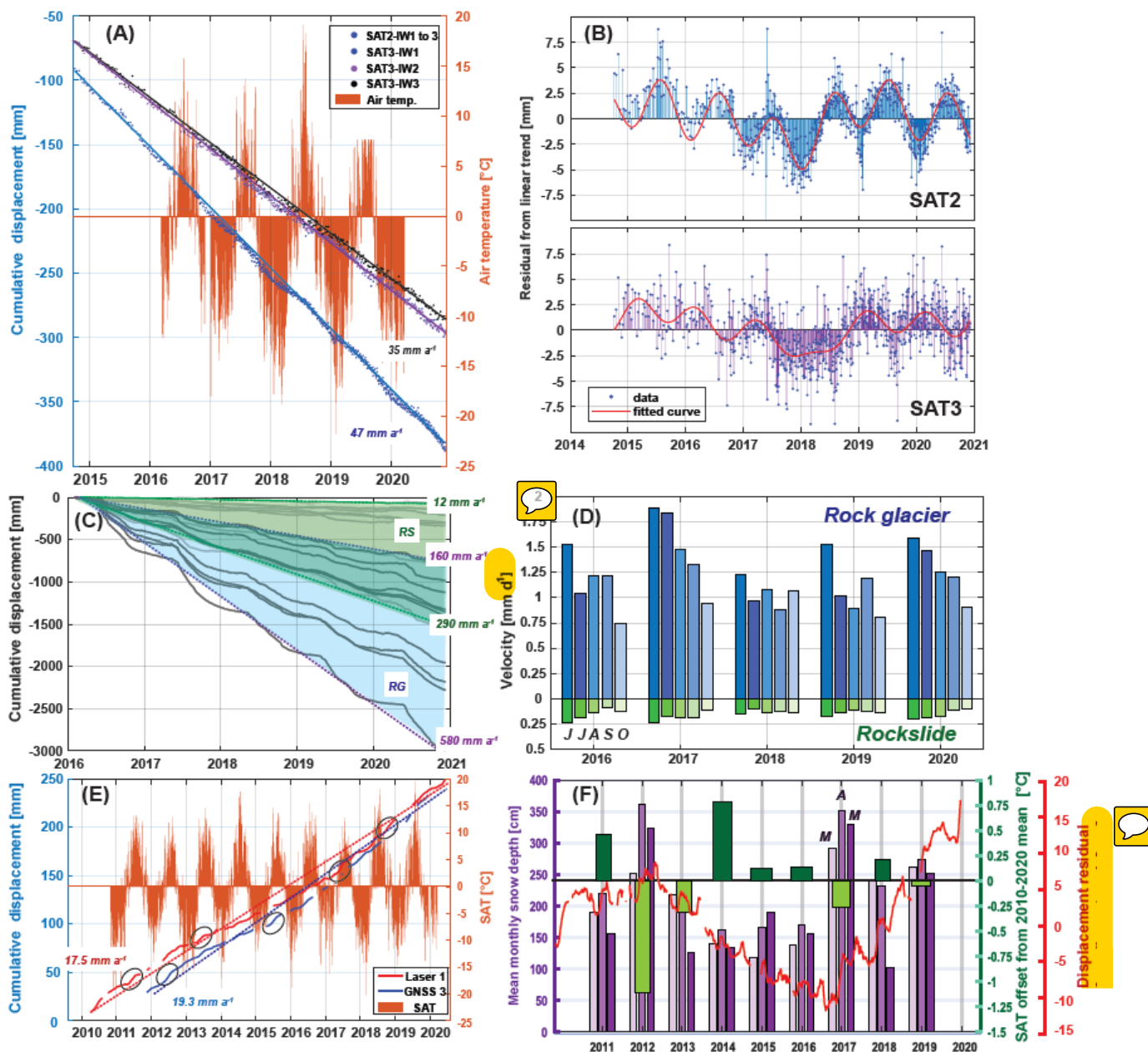


Figure 5: Displacement measurements at Gámanjinni-3 (A-D) and Mannen (E-F). (A): Cumulative displacement rates from the three satellite corner reflectors on Gámanjinni-3, showing average annual displacement rates of between 35 and 47 mm a^{-1} along satellite radar LOS. (B) Residuals from linear trend for SAT2 (upper) and SAT3 (lower). We fitted a third-order sinusoidal curve (red line) to the residual points. The fit indicates annual variation and a trend towards negative residuals until 2018. (C): Cumulative displacement along GB-radar LOS derived at in total 18 points dispersed over the rockslide (RS) and rock glacier (RG) area (Figure 1) based on GB-InSAR. The green shaded envelope shows the RS points, the light blue envelope indicates the RG points. Velocities between 10 and close to 600 mm a^{-1} are encountered. (D) Average daily displacement averaged over a month along GB-radar LOS for one GB-InSAR point at the rock glacier (*blue bars*) and a point at the rockslide area (*green bars*). For each year the months between June and October are shown. The graph shows highest velocities early in the melting season, and highest absolute velocities in 2017. (E) Mannen: Cumulative displacement rates for GNSS3 and Laser1, plotted with SAT since 2010. There are obvious acceleration phases (some indicated by ellipses) during early summer (May/June). (F) Residuals from linear trend for Mannen Laser1 (red line) against MAAT deviation between 2010 and 2020 (green bars) and snow depth (purple bars) for the months March through May. There is a clear decrease in displacement rates between 2013 and 2017, which seems related to higher air temperatures and lower snow coverage.

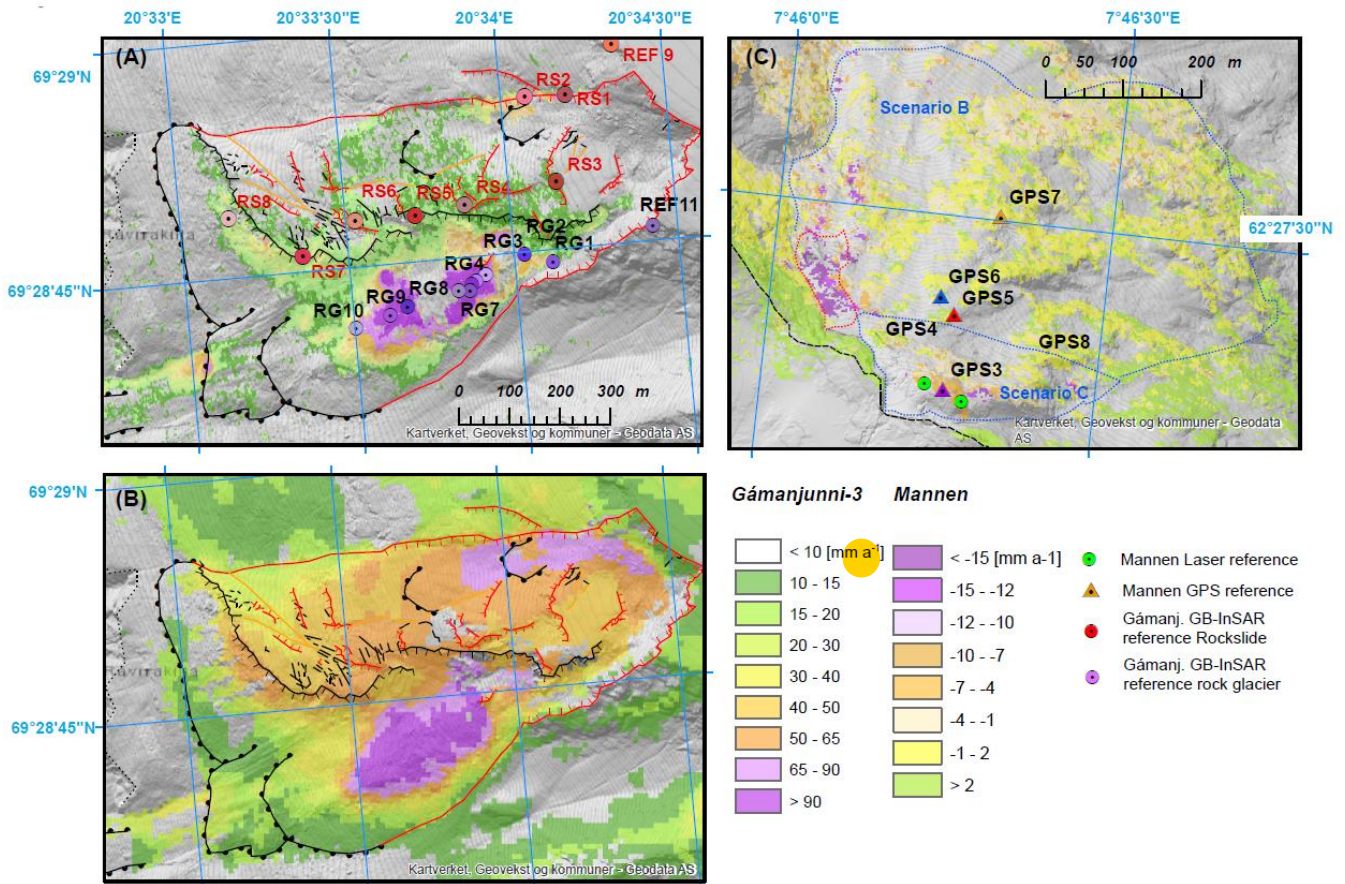


Figure 6: Spatial distribution of displacement rates for Gámanjunni-3 (A-B) and Mannen (C). (A): The GB-InSAR map is average for the summer 2020. The circles indicate the position of time series sampling shown in Figure 5 on the rockslide (red) and the rock glacier (violet), respectively. The colour depth indicate relative differences in velocity. (B): Satellite 2D InSAR derived averaged summer displacement rates collected between 2009 and 2014, using TerraSAR-X (Eriksen et al., 2017). Both show clearly higher velocities in the rock glacier area. (C): GB-InSAR displacement rates along GB-radar LOS of the Mannen instability from summer 2020, showing relatively low displacement rates outside the upper scar area. The recently failed rockslide “«Veslemannen»” (Kristensen et al., 2021) is delineated by the dotted red line. The dashed black line indicates the upper scarp area. The failure scenarios are based on Dahle et al. (2008). Note the different velocity scales for Gámanjunni-3 and Mannen, All base maps from © Statens Kartverk.

Surface displacement – For Gámanjunni-3, continuous laser and GNSS measurements are available from 2018, however, the data are too short for assessing long-term variations. The three satellite corner reflectors on site provided a continuous data series since 2015, based on Copernicus Sentinel-1 data. They show a homogenous movement of between 35 and 47 mm a⁻¹ along satellite radar LOS (Figure 5a). The residuals from the linear trend clearly shows seasonal variations with higher velocities during early spring and summer, and largest negative residuals during winter 2017/18 (Figure 5b). Time series derived from GB-InSAR in all the 18 points revealed velocity variations between 160 and 580 mm a⁻¹ along GB-radar LOS for the 10 points on the rock glacier, and between 12 and 290 mm a⁻¹ for the 8 points in the rockslide area (Fig. 5c-d). The data showed a clear seasonality, which is attributed to the insecurity of the data gathered when the ground is snow covered. Monthly velocities during the snow-free months revealed in most cases (1) higher displacement rates early in the melting season than later, and (2) highest summer velocities during 2017 for both the rockslide and the rock glacier part of the instability (Figure 5d). According to the RW and SAT observations, 2017 was a particular warm year, and RW-S shows above-zero mean annual RW temperatures (Figure 5c). The distribution of velocity over the rockslide area shows relatively similar velocities over most of the body including the sliding block, with 40-80 mm a⁻¹, decreasing rapidly towards the slide front at 600 m a.s.l. (Eriksen et al., 2017) (Figure 6a-b). Highest velocities are obtained on the rock-glacier like landform forming the southern part of the instability, with surface velocities of > 100 mm a⁻¹ (Figure 6b). GB-InSAR revealed similar displacement patterns as the TerraSAR-X data (Figure 6a).

Numerical modelling – The temperature field revealed by the 2D temperature modelling clearly showed permafrost conditions in the slopes of Gámanjunni-3, down to 600-700 m a.s.l. at the end of the 19th century, which includes most of the moving unstable part of the slope (Figure 7a). Since the end of the LIA, permafrost has warmed and degraded at its lower boundaries (Figure 7b), today probably only around half of the moving part of Gámanjunni-3 is influenced by permafrost, while the lower parts are modelled to be permafrost-free today (Figure 7c). On the plateau, maximum snow cover is around 1 m thick, warming ground temperatures, while the steep rock walls are snow free. Snow cover and water

content are sensible parameters for the modelling, modulating the permafrost temperature and geometry, as shown in the sensitivity tests provided in the appendix (Figure A2). Maximum permafrost thickness of *c.* 300 m is modelled, which is in agreement with similar settings where we measure deep permafrost temperatures, such as in Tarfala in northern Sweden or Juvvasshøe in southern Norway (Isaksen et al., 2001). The lower permafrost boundary is modelled to be relatively stable during the 150 year period, demonstrating that relative thick permafrost can be expected in places.

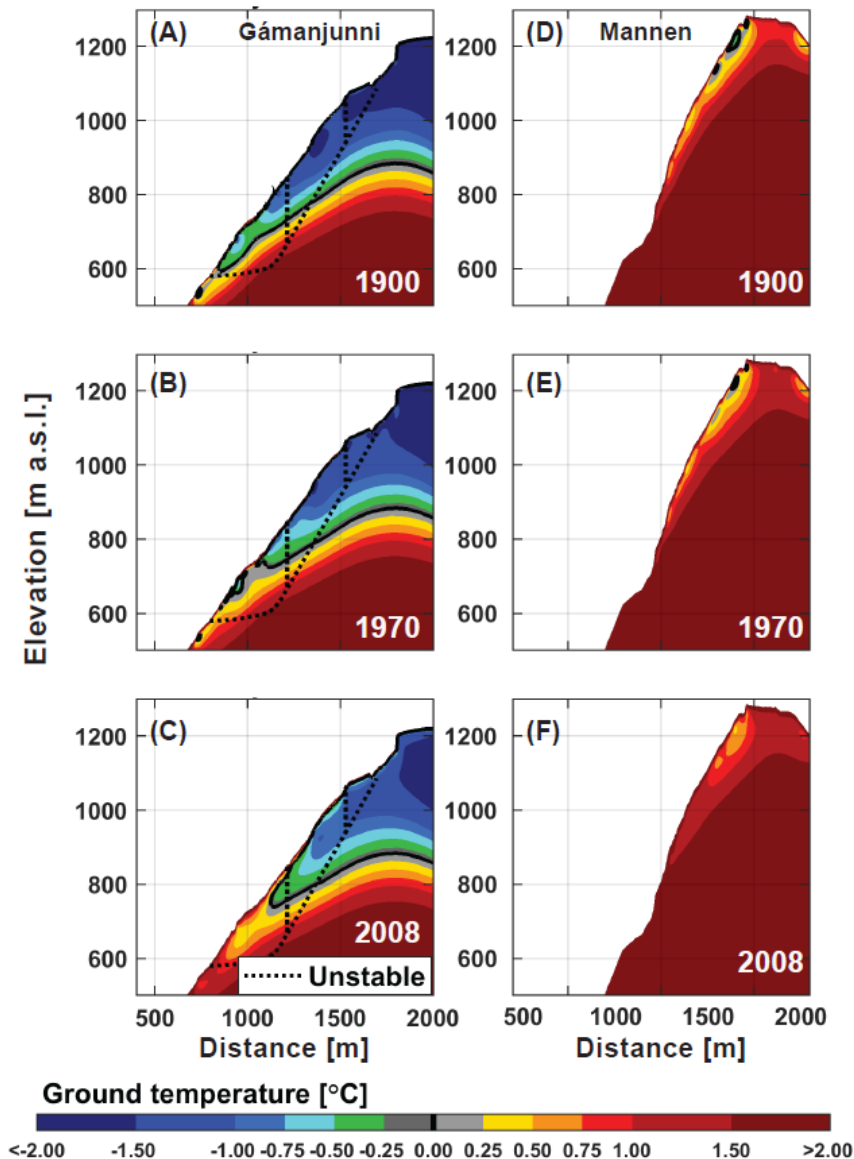


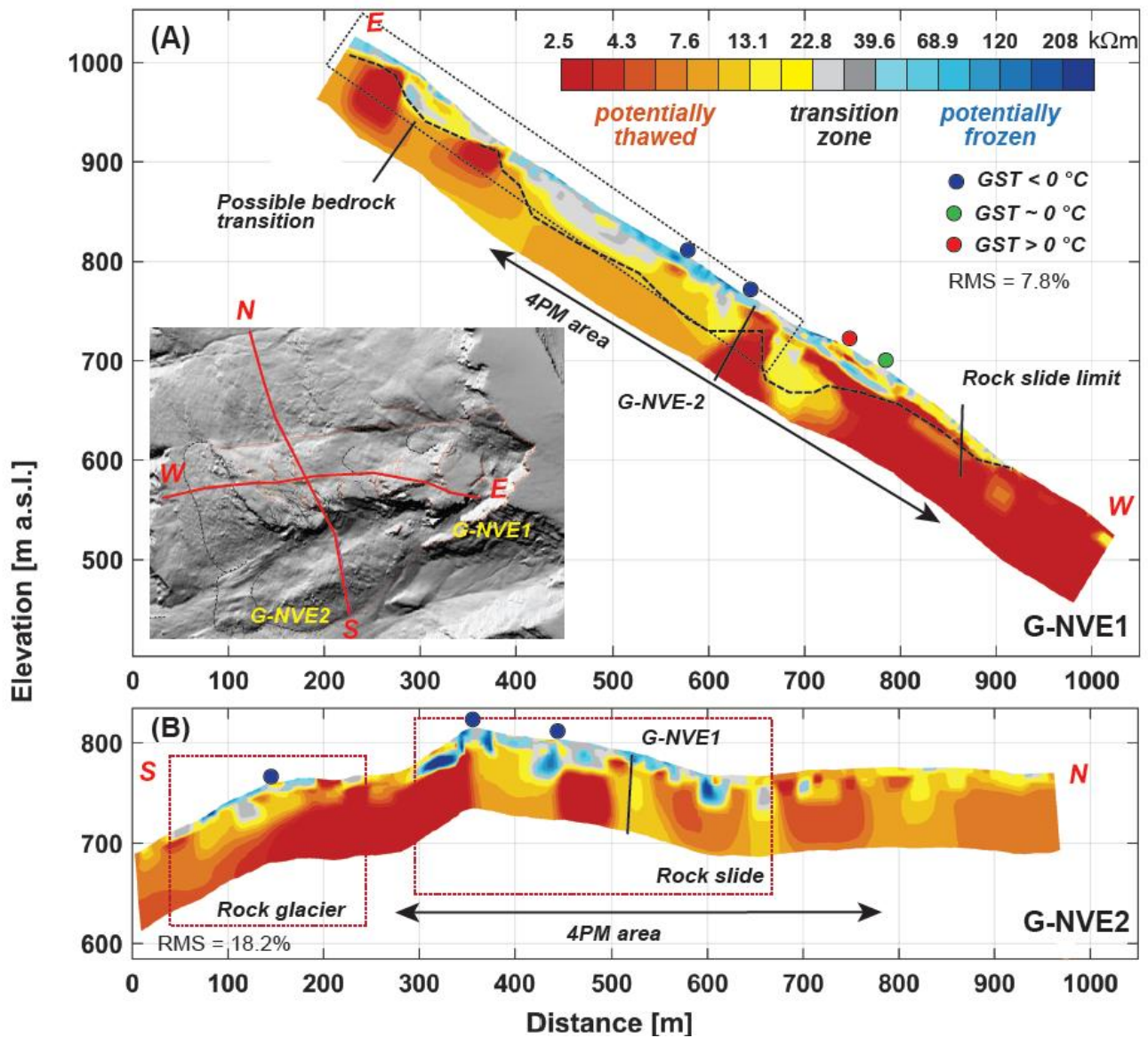
Figure 7: Modelled mean annual ground temperature for Gámanjunni-3 (A-C) and Mannen (D-F) for three different years (1900, 1970 and 2008). The stippled line denotes the instability at Gámanjunni-3 based on Böhme et al. (2016). The black solid lines in the plots show the 0°C-isotherm. For parameterisation and sensitivity plots, see Figures A1 and A2.

540

Geophysical surveys – The two long profiles down the slope from the moving block at ca. 1050 m a.s.l. (G-NVE1, Figure 8a) and along the slope at c. 750 m a.s.l., crossing a rock-glacier like feature (G-NVE2, Figure 8b), show consistent patterns (see also Figure B1b). General resistivity values of the unfrozen and intact bedrock at depth seems to be around 1-10 kΩm. Surface resistivity values in the down-slope profile
545 show a maximum between 700-900 m a.s.l. (40-100 kΩm) and further decrease to below 2 kΩm towards lower elevation (Figure 8a). This altitudinal transition roughly coincides with the numerical temperature modelling (*cf.* Figure 7c). The profile G-NVE2 is oriented from south to north (Figure 8b). Both profiles show maximum resistive surface layers of up to 50 m in thickness. In combination with the GST values by Eriksen (2018) and NVE this resistive near-surface layer could indicate permafrost patches. The
550 overall resistivity values within the rock glacier are lower (10-20 kΩm), and the more resistive surface layer is somewhat shallower (*c.* 25 m) compared to the rockslide part in the centre of the profile.

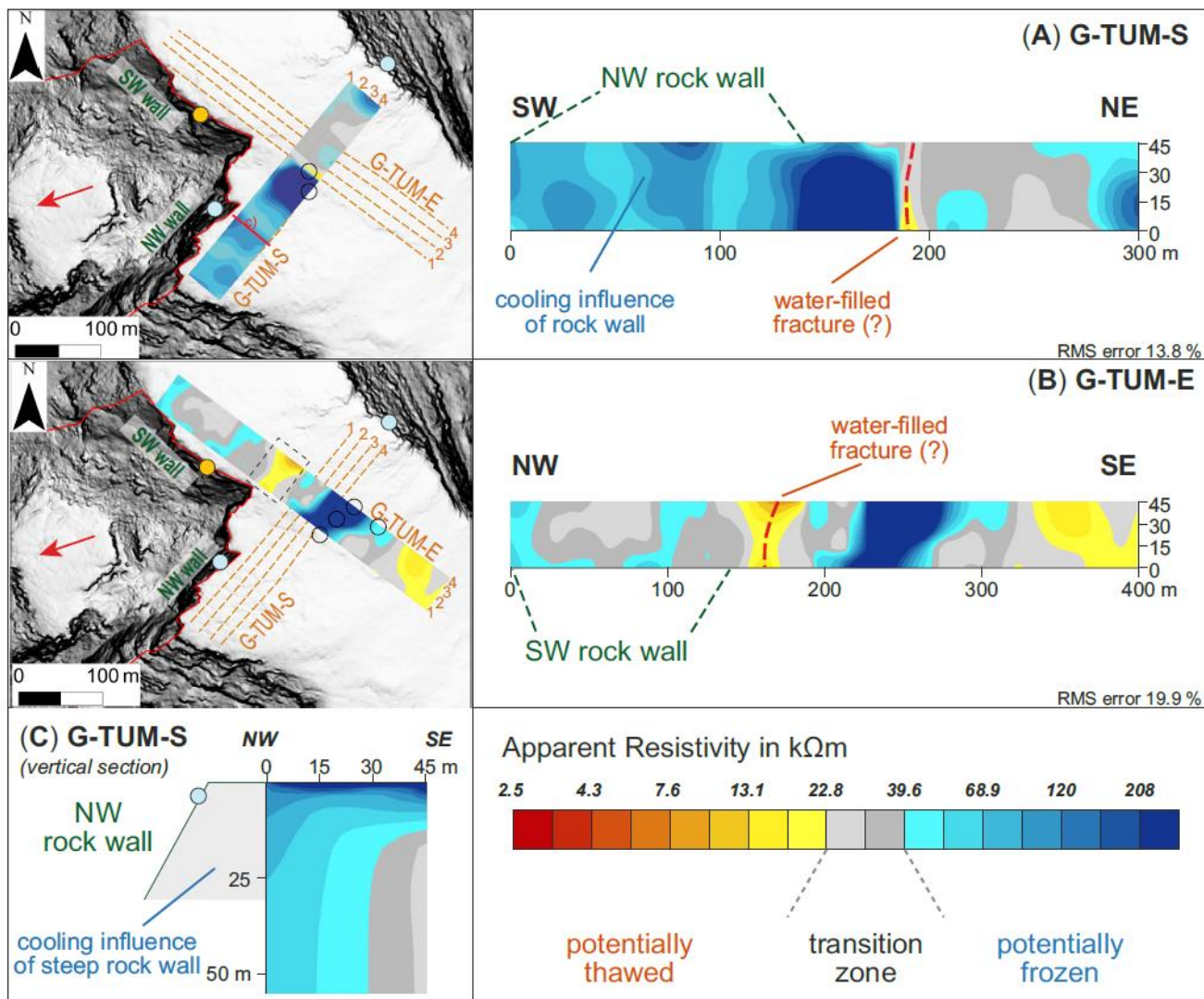
The 3D profiles (G-TUM-S1-S4 and G-TUM-E1-E4) on the plateau clearly demonstrate the cooling influence of the NW-oriented rock wall, which becomes less pronounced with distance from the rock wall (Figure 9a-c, Figure B1b). In addition, low-resistivity areas (< 20 kΩm) are visible, probably indicating
555 thawed conditions associated to water-filled fractures and cracks in prolongation of the exposed sliding surfaces (Figure 9 a-b). These discontinuities oriented parallel and perpendicular to the profiles may account for differences in overlapping tomograms. The east-oriented profiles (TUM-E) are clearly influenced by the SW-oriented rock wall, with generally lower resistivity compared to TUM-S close to the NW-oriented rock wall. (> 60 kΩm) areas, which are highly influenced by the rockwalls (Figure 10,
560 Figure B1c).

The G-EDY1 ERT-profile crosses the south-exposed rockwall, and shows lower resistivity values close to the rock wall surface (< 20 kΩm), decreasing towards the north-side of Gámanjunni-3 (Figure 10a). The transition between the rockwall and the moving block below is covered by blocky scree material and show high resistivity (>100 kΩm) (Figure 10a). The G-EDY2 ERT-profile transverses the NW-oriented
565 rock wall, with higher resistivity at the surface, clearly indicating the temperature differences between the two rock faces (Figure 10b). Also here, high resistivity patches are found under the moving block and the cooled rock wall, while lower resistivity values are found under the snow-covered plateau (< 15 kΩm) (Figure 10b). The moving block is an area of high resistivity, with either possible permafrost influence or the presence of air-filled fractures. These higher values are also visible at a cross profile over the structure
570 (G-TUM-Block) (Figure 10c).

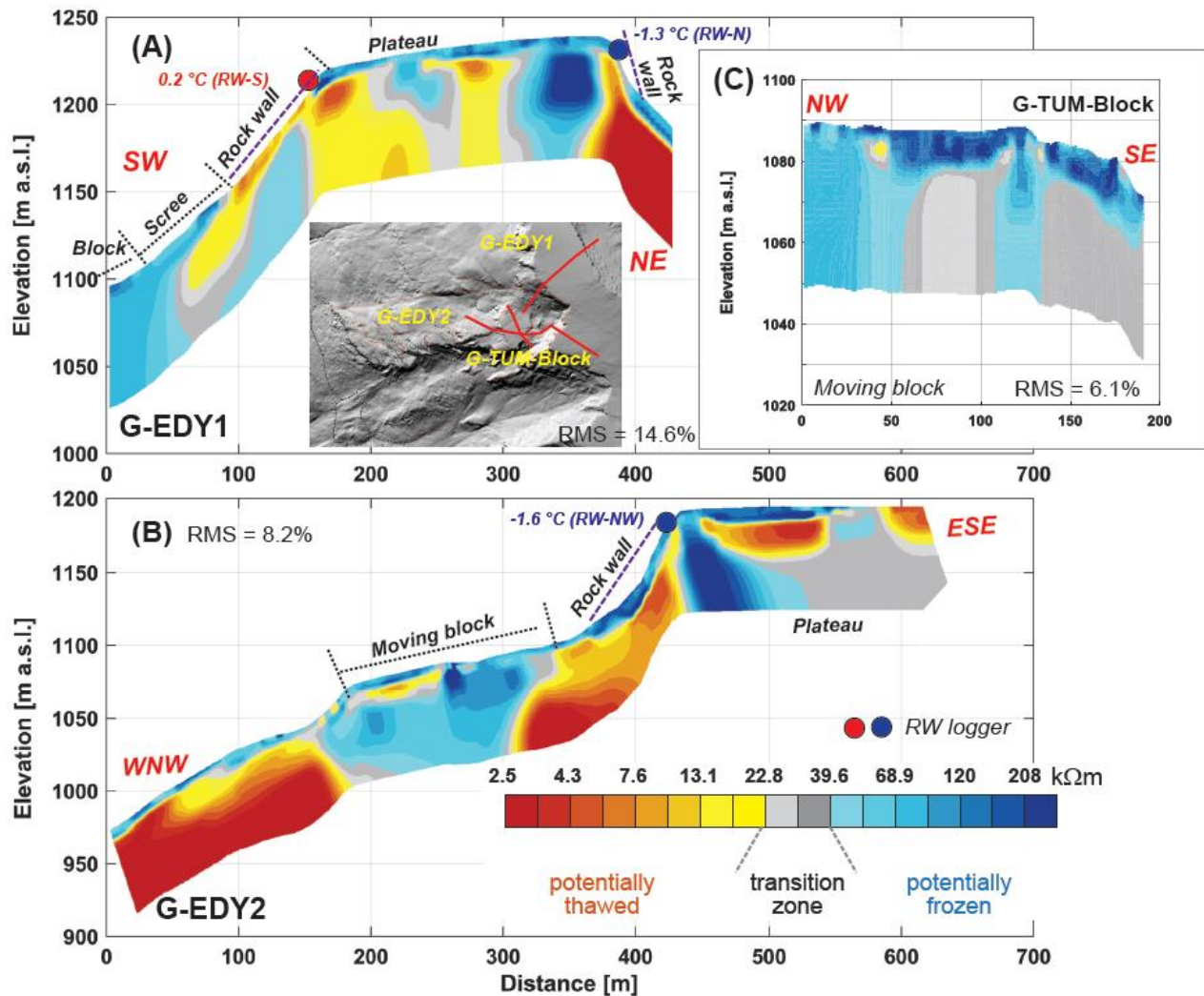


575 **Figure 8:** The long ERT profiles for Gámanjuni-3. The colour scale follows the laboratory analysis shown in Figure 3, and is a logarithmic scale. (A) G-NVE1, showing high resistivity layers down to *c.* 700 m a.s.l. (box). The dashed line indicates the possible transition to solid bedrock. (B): G-NVE2, the cross profile over the rock glacier and the lower rockslide area, indicated by the red boxes. The circles in both profiles indicate location and mean annual GST in the vicinity of the profiles, based on Eriksen (2018) and subsequent measurements (NVE, unpublished data). They show sub-zero temperatures in areas with high resistivity surface layers, and higher values below 700 m a.s.l. The part of the profile used for the 4-phase model (4PM) is indicated in both profiles (Figure 11). Base maps from © Statens Kartverk.

580



585 **Figure 9:** Quasi 3-D surveys on the Gámanjuni-3 plateau above the instability. The illustration shows a section
interpolated for 10 m depth for (A) the south-oriented profiles (*G-TUM-S*), and (B) the east-oriented profiles (*G-TUM-E*).
There is a high variability in resistivity, and unfrozen parts indicated are interpreted as water-filled
fractures. See main text for more details. (C): Interpolated vertical profile close to the NW-oriented rock wall,
590 showing the thermal influence of the steep and probably snow free area. The location of the cut is shown with a
red solid line in (A). The black circles denote BTS measurements, showing all a temperature below -3°C and
probable permafrost. These measurements are all situated in high resistivity areas. The filled circles show
average annual temperatures for the rock wall loggers (Figure 4a), with light blue equal or below -1°C and orange
above 0°C . Base maps © Statens Kartverk.



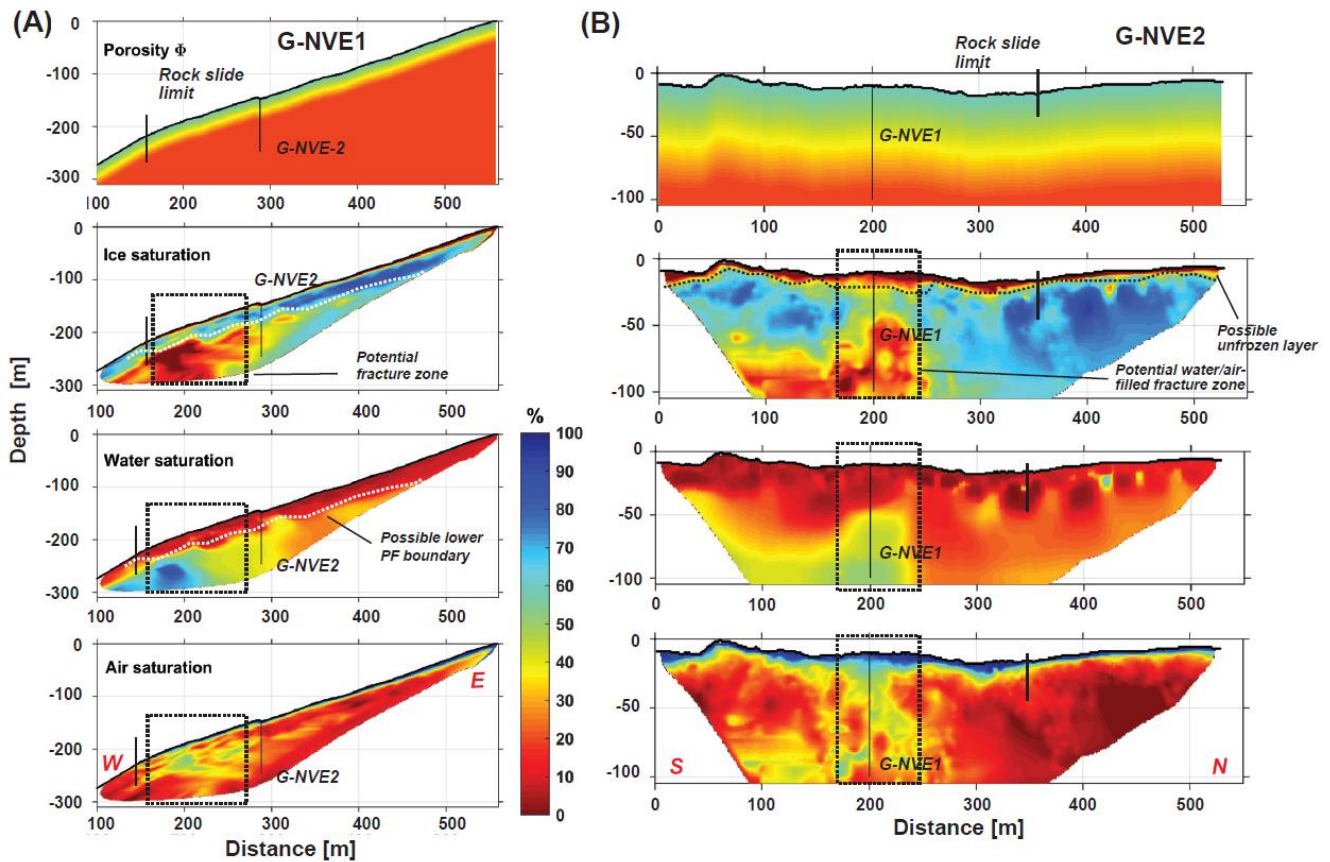
595 **Figure 10:** ERT surveys over the back scarp at Gámanjunni-3, (A) G-EDY1 which is oriented over the exposed part of the slip surface. While the rock wall shows low resistivity, there is a clear transition towards the scree and the moving block with considerable higher resistivity. (B) G-EDY2 which is placed over the north-western exposed part of the rock wall. There are significant higher resistivities in both rock wall and plateau, illustrating that this side is more influenced by the cooler rock wall. For both profiles, the locations of the rock wall loggers are indicated as circles. (C): G-TUM-block oriented NW to SE over the moving block below the slip face. The resistivity is relatively high in relation to the plateau and below the block. Base maps from © Statens Kartverk.

600 The combination of ERT and refraction seismic tomography within the 4PM revealed clear patterns in relation to possible permafrost and ice saturation (Figure 11, (Hauck and Hilbich, 2018)). At the G-NVE2 ERT profile, the considerable ice content values of up to 50-80 % saturation suggests permafrost conditions. We also see heterogeneities in vertical and horizontal directions along the profile line (Figure 11b). The overall water contents are mostly low, except a possible fracture zone at depth (horizontal

distance 180-230 m) (Figure 11a), showing greater ERT heterogeneities and low seismic velocities
605 (Figure C1b). Such a pattern is normally associated with high subsurface air contents. This kind of low
P-wave velocity (*i.e.* high air contents) at greater depths is not common, and more prominently discussed
in the reports concerning the original seismic and ERT results of the area (GeoExpert, 2016). Unfrozen
surface layers with no ice along G-NVE2 for the uppermost 5-10 m are further suggested by the analysis,
while the northern part of the profile show a higher ice saturation within the upper 30 m (Figure 11b).
610 Finally, overall dry conditions are suggested by modelled high air contents near the surface. The overall
ice-content is probably low even if the model indicates high ice-saturation. This is related to the low-
porosity bedrock (porosity *c.* 0.7 %, (Leinauer, 2017)), which is in accordance with resistivity values of
only ~10 kΩm, which are more atypical for high ice contents (Figure C1b)). We prescribed a laterally
homogeneous porosity model in the 4PM, which probably led to an overestimation of ice saturations due
615 to low-porosity bedrock in the right-hand side of the profile.

Also along the slope of the instability (G-NVE1) the results suggest permafrost conditions. This is
especially evident for the upper part of the profile (Figure 11a). We also could identify an unfrozen surface
layer, even if this feature is less visible due to geometry reasons, and a fracture zone characterised by high
air contents (150-280 m horizontal distance, Figure 11a). We also note that the values for the geophysical
620 profiles at the crossing points of the two profiles are quite correspondent. There, the transition between
predominantly high ice saturations and high water saturations (which could be interpreted as a transition
zone between frozen and unfrozen conditions) is in both cases at around 40-50 m depth. However, also
here we prescribed a gradient model for porosity which was homogenous along the profile, so such
transitions in the data could also be due to change in material properties. However, we are relatively
625 confident of the reliability of our analysis, as the 4PM resulted in similar values at the cross-over area of
both profiles.

The results indicate permafrost conditions in both profiles, with an at least 30-50 m thickness. In addition,
strong heterogeneities especially regarding de-compaction and fracture zones have been found, indicating
significant air contents at larger depths, which is seldom found in thermally stable mountain permafrost
630 bodies.



635 **Figure 11:** Saturation of pore space determined using the 4-phase model (4PM) based on Hauck and Hilbich (2018) for (A) the long profile along the slope G-NVE1 and (B) the transversal profile G-NVE2. The total saturation values for ice, water and air are given in relation to the porosity prescribed in the upper-most plots for the respective profiles. The model clearly indicates high ice saturation in parts of both profiles, thus suggesting the presence of permafrost. The potential fracture zone discussed in the main text is indicated by the black boxes. The possible unfrozen layer is indicated in (B), while the possible lower permafrost boundary is indicated in (A) for G-NVE1. Note that the tomograms are subsets of G-NVE-1 and 2 and thus shorter than the profiles shown in Figure 8.

640 **4.3. Mannen**

Temperature monitoring and reconstruction – The two rock wall loggers are oriented towards north (RW-N) and east (RW-E), respectively (Figure 1c). Both loggers showed positive annual average temperatures during 2015 and 2019, with 1.2 °C and 2.6 °C, respectively (Figure 4b). During the same period, the mean air temperature on the plateau was 0 °C, showing that rock wall temperature was at least 1 °C higher than air temperature. The reconstructed RW temperature series since 1970 revealed above-zero temperatures in the rock wall, with an increasing trend (Figure 4c). The north-exposed rock wall certainly featured sub-zero temperatures in some cold years, such as in 2011.

645

GST loggers distributed along the rock scarp (Figure 1b) showed mean GST between 0.9 and 1.6 °C, showing the warming influence of the thick snow cover. The TinyTag loggers in «Veslemannen» (Figure 1c) recorded BTS temperatures in fractures between -1.3 and -1.8 °C in late April - early May 2015. In late April 2016 the BTS recorded was between 0 and -2.3 °C. The mean temperatures recorded by these loggers are not representative, as they all lack complete annual data, but have to be around 0 °C in annual average. These data are described in more detail in Kristensen et al. (2021). Most of the BTS measurements were conducted close to the edge of the back scarp. While the BTS-values were mostly below -2 °C behind the north-exposed scarp, BTS values above -2 °C dominate behind the east-oriented edge (Figure 1c). The data confirm that permafrost patches likely occur along the plateau edge (Magnin et al., 2019).

Surface displacement – For the GNSS and laser station velocities between 14 and 20 mm a⁻¹ are recorded since the start of the monitoring in 2010 (Figure 5e). The data indicate higher displacement rates during the start (2010) and the last years of measurements, with a slow-down between c. 2013 and 2016, and a subsequent increase (Figure 5f). Between 2010 and 2013 southern Norway had cold winters (MAAT of -1 °C on Mannen at 1200 m a.s.l.) (Figure 5g), while after 2013 air temperatures increased by 1 °C on average (MAAT = -0.1 °C between 2013 and 2020). The slow-down of displacement rates between 2013 and 2016 seems to be associated with a lower snow cover during the winters of these years (Figure 5f). In terms of seasonal variations the cumulative movement plots indicate a step-wise pattern, with higher velocities during spring/summer and lower velocities during fall/winter (Figure 5f). This is different to what was observed at «Veslemannen», where velocity accelerations started during the snow melt period, but was much higher and more variable in the fall period, and after heavy precipitation events (Kristensen et al., 2021).

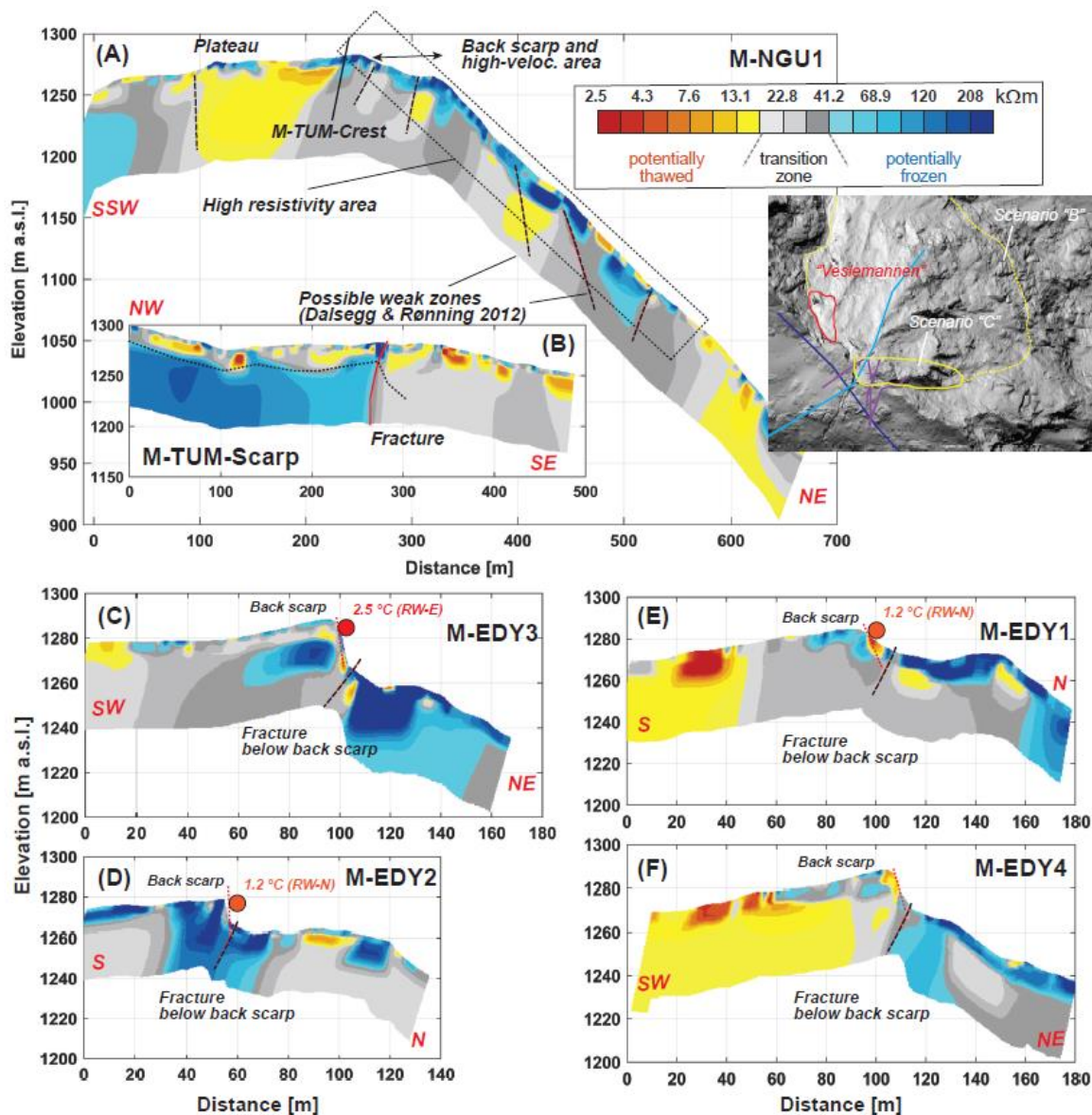
The distribution of velocities over the moving slope body was derived from GB-InSAR, and shows highest velocities in the upper part just below the back scarp and the plateau, with >20 mm a⁻¹ (Figure 6c). This high-velocity area defines scenario C for Mannen (Fig. 1c).

Simulated ground temperatures – The temperature field revealed by the 2D temperature modelling indicates possible permafrost conditions in the steep part of the slope during the onset of modelling at the end of the LIA, with permafrost thicknesses of between 50 and 100 m depending on model initialisation procedure (Figure 7d) and snow cover parameters (Figure A2b). During the 150 years of the model run, steady warming reduced and degraded the modelled permafrost. However, isolated patches might still be possible in the steepest part with less snow, depending on model parametrisation in terms of snow coverage and water content in the model domain (Figure A2b). Today, deep seasonal frost is modelled in the steep parts which is coincident with the rock wall measurements in the back scarp (Figure 7f, Figure

4b). The plateau is heavily snow covered, and frost penetration is only possible laterally from the snow-free steep slopes.

Geophysical surveys – The ERT profiles at Mannen show generally higher resistivity than at Gámanjuni-3, probably related to different background resistivity of the bedrock and less surficial sediment cover. 685 The 1 km profile (M-NGU, Dalsegg and Rønning, 2012) covers both the plateau and the steep unstable slope, and showed comparatively low resistivity (10 - 40 k Ω m) at depth (probably indicating the resistivity of the unfrozen intact bedrock), and higher resistivity at and below the scarp close to the surface down to *c.* 1150 m a.s.l. (50 - >100 k Ω m) (Figure 12a). These high resistivity areas reveal crushed air-filled and well-drained bedrock and may contain permafrost patches (Dalsegg and Rønning, 2012). The 690 ERT profile along the crest (M-TUM1-scarp) shows decreasing resistivity from NW to SE (Figure 12b). High resistivity (> 100 k Ω m, possibly indicating frozen conditions at depth) are observed close to the rock wall, while low resistivity (< 30 k Ω m) dominates in the southeast, where the profile departs from the crest, and in the upper *c.* 20 m of the profile. The highest values (> 300 k Ω m) are observed around a deep crack delimiting one of the moving blocks at Mannen, which defines a fractured zone with high 695 porosity and unsaturated conditions (Figure 12b).

The rock wall profiles (M-EDY1-4) show mainly resistivities below 40 k Ω m, also at depth, on the plateau, and higher resistivity (> 50 k Ω m) over the back wall and over the fracture between the back scarp and the moving block (Figure 12c-f). Again, the highest values are measured below the back scarp over large fractures, which contain much air and are possibly partly snow and possibly ice filled. An exception is 700 the M-EDY2 profile (Figure 12d), where high resistivity is also obtained on the plateau. This profile has 2 m spacing, giving a higher resolution close to the surface, and therefore the coarse and high-porosity block cover on the plateau might result in higher resistivity values.



705 **Figure 12:** ERT surveys over the Mannen instability, for location see Figure 1 and for survey parameters see Table
 710 1. (A) Along-slope profile (M-NGU), based on Dalsegg & Rønning (2012). The possible weakness zones described
 in Dalsegg & Rønning (2012) are indicated by dashed lines. The surface-near high resistivity area is indicated by
 a box, and may reveal crushed air-filled and well-drained bedrock and may contain permafrost patches (Dalsegg
 and Rønning, 2012). (B): M-TUM-scarp profile along the rim on the plateau of Mannen above the exposed slip
 surface. A strong transition of resistivity is indicated by a red line and interpreted as a deep fracture, maybe water-
 filled. (C) to (F) show the ERT profiles (M-EDY1-4) over the rock wall from the plateau into the instability at
 various locations (Figure 1). The circles show the mean annual rock wall temperatures in the two loggers on site.
 The exposed back fracture below the slip surface is indicated by dashed lines, while the back scarp is indicated by
 a red dotted line. Base maps from © Statens Kartverk.

715 5. Discussion

5.1. Hypothesis and uncertainties

Both Gámanjunni-3 and Mannen are considered as high-risk unstable slopes (Hermanns et al.,
720 2013a;Majala et al., 2016) and are continuously monitored. The movement was initiated several millennia
after deglaciation, thus climatic changes have been discussed as a factor influencing the dynamics of the
instability (Hilger et al., 2021). Surface exposure dating shows that the current displacements of the slopes
is larger than the Holocene average (Böhme et al., 2019;Hilger et al., 2021), indicating atmospheric
warming as a likely influencing factor. For both sites, we therefore hypothesise that permafrost warming
725 and/or degradation might be a substantial explanation for the temporal displacement pattern.

Our study combines a variety of methods, ranging from point observations (e.g. rock wall temperature
measurements) via local surveys (e.g. geophysical measurements) to larger-scale modelling along an
entire slope setting (e.g. geothermal modelling). Each method has uncertainties, and includes different
730 pre-conditions, representing many pieces of a puzzle to form a consistent picture. For example, the heat
flow modelling represents the lower extent of possible permafrost at Gámanjunni-3 as indicated in the
ERT surveys, but does not represent local thawed areas and variations indicated by the ERT.

The methods used are independent of each other, and may contradict in places, but result in an overall
735 explainable pattern. The temperature modelling does not account for fractures and other structures in a
rockslide area (e.g. where water can penetrate); Cryogrid-2D is a two-dimensional model purely based
on heat conduction, which results in a smoothed and simplified version of reality (Myhra et al.,
2017;Myhra et al., 2019). The ERT profiles were measured in rough terrain with often poorly coupling,
and both the resistivity values and data noise are very sensible to cracks and fractures, strong topographic
740 variations, or local water penetration. This leads to a high variability of resistivity and may produce
inversion artefacts, such as in the transition between plateau and rock wall at Gámanjunni (Figure 10),
which is also represented by the partly high root mean square errors (RMS) of the inverted tomograms,
which vary between 6 and 20 %. Therefore, comparing ERT and a more large-scale temperature model
is not meaningful on a local site level. Our ERT and 4PM results for Gámanjunni-3 clearly show
745 potentially frozen areas within the rock slide area, disappearing down-slope. The potentially frozen areas
are at a depth of *c.* 30-50 m, which is close to the results of the temperature modelling at these places.
However, locally thawed areas in the rockslides and possible taliks as indicated in the ERT are certainly
realistic, but cannot be covered by the simplified heat flow model.

5.2. Permafrost conditions and recent ground thermal development

At Mannen, we do not measure sub-surface RW or GST temperatures below 0°C on an annual average at present, except for shaded locations in fractures (Kristensen et al., 2021). Over the last 140 years, MAAT
755 has increased, and since the cooling in 1970s the temperature rise was around 1.5°C (Figure 4c). Rock wall temperatures oriented towards north must have had sub-zero surface temperatures during several periods of the last 150 years, indicating permafrost development in the past in shaded topographic settings (Figure 4c). This confirms the modelling by Magnin et al. (2019), and the results from Kristensen et al (2021) for “*Veslemannen*” which indicate sporadic permafrost zones at Mannen in certain locations such
760 as fractures, snow-free patches and in shaded locations. It is also well documented that cracks and fractures in rock walls locally significantly decrease ground temperatures (Magnin et al., 2015a; Hasler et al., 2011). This is also supported by the ERT surveys showing highest resistivity values close to the rock wall and large fractures (high porosity), which may be partly filled by ice (Figure 12). However, there are no observations of ice in the fractures as in the Jettan rockslide in northern Norway, where permafrost is
765 observed and probably influences seasonal kinematic variations (Blikra and Christiansen, 2014). The thermal modelling indicates that permafrost patches could develop at and below the upper scarp, and that the unstable area is modelled as being cooler than the plateau (Figure 7), a pattern also visible in the long ERT profile (Figure 12). The mountain plateau of Mannen can hardly develop permafrost because of a very thick and long-lasting snow cover.

770 For Gámanjunni-3, MAAT have risen over the last 140 years, and the rise was around 1.8°C since 1880. Estimated rock-wall temperatures in all orientations have been mostly negative between 1880 and 2020. Since *c.* 2000, however, the south-oriented rock wall showed mean annual temperatures close to or above 0°C (Figure 4c). Permafrost warming and possible degradation might have accelerated since *c.* 2000, which could influence the geotechnical properties of the site. The ERT measurements suggest permafrost
775 at Gámanjunni-3, but resistivity differences between topographic aspect and laterally over the plateau indicate changes in ice content and ground temperature including the potential occurrence of taliks (Krautblatter et al., 2010; Gruber and Haeberli, 2007; Gruber and Haeberli, 2009). Those can form during general atmospheric warming, extreme warm years or along water-filled fractures (Luethi et al., 2017). These processes result in high resistivity variations (Hilbich et al., 2008; Krautblatter and Hauck,
780 2007; Mollaret et al., 2019). This interplay, together with air and water advection in fractures produces a complicated thermal pattern, which is not reproduced by our heat flow modelling. The pattern is further highly modulated by snow cover, which in Scandinavian high-mountain settings is highly variable due to

wind re-distribution (Gisnås et al., 2014;Gisnås et al., 2016b). This redistribution of snow is the major source for high spatial variability of surface temperatures (Haberkorn et al., 2015), which can vary with several °C (Gisnås et al., 2014;Marmy et al., 2016;Magnin et al., 2015a;Magnin et al., 2017;Magnin et al., 2015b;Hasler et al., 2011;Haberkorn et al., 2017). However, ice-free north-oriented rock walls show a cooling influence on the surrounding subsurface.

In summary, for both sites, we can expect at least local permafrost conditions, clearly more widespread at Gámanjunni-3 than at Mannen, and a warming with accelerated pace during the last two decades, following similar observations all over Europe (Etzelmüller et al., 2020).

5.3. Is there a coupling between the slope instability and permafrost dynamics?

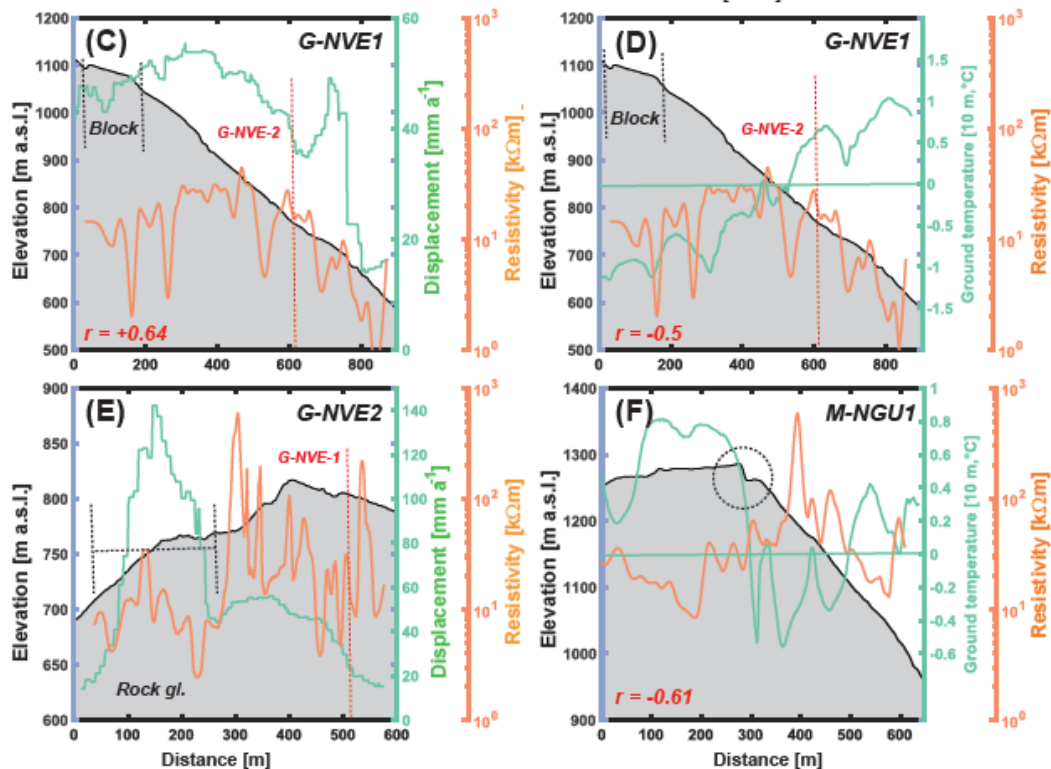
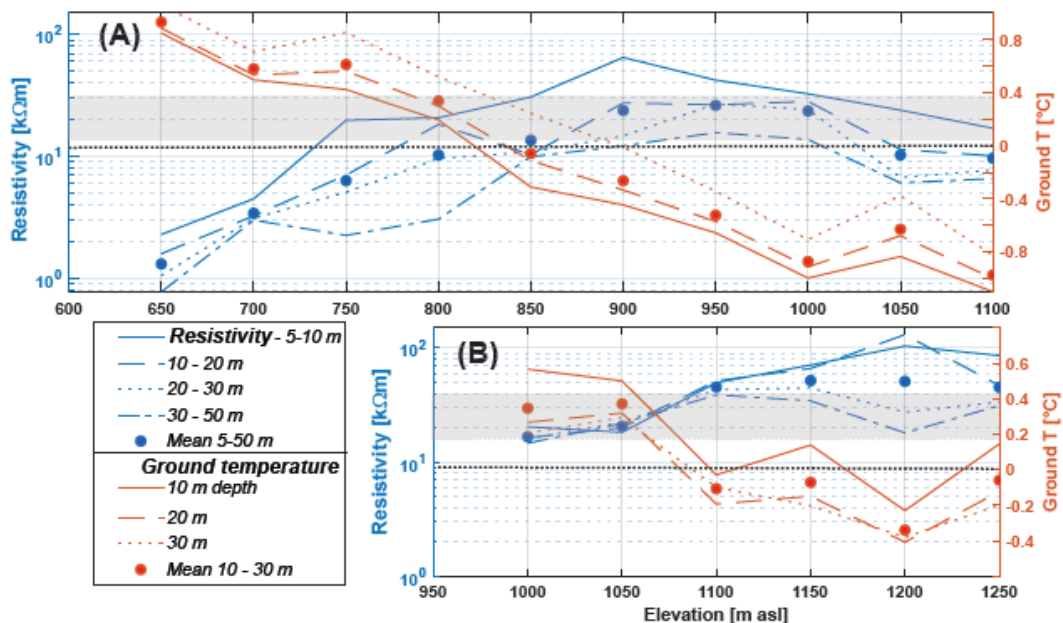
Spatial pattern of movement – The spatial distribution of surface displacement is slightly different at the two sites. At Mannen, relatively high displacement rates of $c. 20 \text{ mm a}^{-1}$ are measured in the upper part of the unstable slope, while low velocities of $< 5 \text{ mm a}^{-1}$ dominate the other parts (Figure 6c). At Gámanjunni-3 displacement rates of $> 50 \text{ mm a}^{-1}$ are registered over most of the mapped rockslide area, with some higher values in the upper part. Maximum velocity values of $>150 \text{ mm a}^{-1}$ are observed in the rock glacier in the southern part of the area (Figure 6a-b).

Displacement rates, ground temperatures and ERT results were related along the ERT lines G-NVE1-2 and M-NGU (Figure 13). At these sites GT is clearly associated with measured resistivity, confirming the lab analysis and our interpretation of possible permafrost at these sites (Figure 13a-b). For Gámanjunni-3 we observe a positive relationship between electrical resistivity and displacement rates (more displacement when higher resistivity) and associated lower displacement with higher ground temperatures along the longitudinal profile over the rockslide mass (Figure 13c-d).

At Mannen similar observations were made, but are not that clear (Figure 13f). This seems contradictory as permafrost is seen as a stabilising factor for slopes (Gruber and Haeberli, 2007;Krautblatter et al., 2013). An explanation for this behaviour can be found in e.g. Davies et al. (2001) who found Factor-of-safety (FS) values below 1 for ice-filled fractures close to the melting point, and FS-values at 1 or above when the ice has melted or is very cold. The stability of both ice in fractures and rock-ice interfaces strongly declines with warming temperatures below 0°C (Mamot et al., 2018). Both at Gámanjunni-3 and Mannen possible ice occurrences are close to the melting point and thus deformable.

It is here important to note, that other factors than the presence or absence of permafrost may govern the observed spatial differences in displacement rates. Changes in the geo-mechanical behaviour may, for

example, cause similar variations of displacement rates as large unstable slopes are typically controlled by pre-existing weak structures and their reactivation by gravitational processes.



820 **Figure 13 (prev. page ...)**. Relationship between resistivity, modelled ground temperature (GT) and rockslide
displacement rates along selected profiles for Gámanjunni-3 and Mannen, binned in 50 m intervals. At Mannen,
poorer InSAR coverage restricted the analysis of the velocity-ERT relationship. The black dotted line indicates the
modelled 0 °C line, while the grey area indicates the electrical resistivity transition resolved from laboratory
analysis (Figure 3). **(A)** Relationship between modelled ground temperature in three depths and extracted electrical
825 resistivity for four different depth areas for G-NVE1. The solid circles display averages over all depths. The graph
confirms the transition area for permafrost around 800 m a.s.l. **(B)**: The same as **(A)**, but for Mannen (M-NGU).
Also here there is a higher resistivity with lower temperatures, but the relationship is less clear. According to the
modelling permafrost can be expected above 1100 m asl. **(C)**: Relationship between elevation, displacement rates
and electrical resistivity for G-NVE1. ERT and displacement rates co-vary, with a significant correlation of $r=0.64$.
830 The red line shows the crossing point for G-NVE2. **(D)** G-NVE1. Relationship between elevation, modelled GT
and electrical resistivity. We observe a negative relation between GT and resistivity ($r=-0.5$). The red line shows
the crossing point for G-NVE2.**(E)** Cross profile G-NVE2 over the rock glacier (dotted line) and rockslide area at
c. 700 m a.s.l. Resistivity is lower and displacements rates are much higher on the rock glacier than on the rockslide
part, indicating different modes of movement (see main text). The red line shows the crossing point for G-NVE1
835 **(F)**: M-NGU. Relationship between surface altitude, modelled GT and resistivity. We observe a negative
relationship between GT and resistivity ($r=-0.61$), with lower GT and higher resistivity values along the upper part
of the steep slope. The location of the back scarp of the unstable area is indicated with a circle.

This applies also when analysing the cross profile (G-NVE2) at Gámanjunni-3, which covered both the
840 rock glacier and the rockslide. Here, the geophysical surveys indicate that an unfrozen near-surface layer
(ice contents ~ 0 in the uppermost 5-10 m) overlies frozen areas. Further on, lower resistivity values in
20-30 m depth are measured in the rock glaciers than in the moving part of the rockslide, even if velocities
in the rock glacier landform is much higher (Figure 13e). These observations may relate to different
processes of movement in the two parts of the instability. While in the rockslide the movement is
845 influenced by possible ice deformation due to inferred higher ice content with depth in this part or block
movement below a frozen layer, the rock glacier movement seems governed by movement related to
water/ice mixtures close to the melting point, where shear strength is greatly reduced and ice deformation
increases (Arenson et al., 2002; Davies et al., 2001; Cicoira et al., 2019).

850 The rock glacier has markedly higher velocities (Eriksen et al., 2018). Such velocities are common for
rock glaciers in alpine environments (Kääb et al., 2007), and often facilitated by a block motion within a
deforming massive ice body (Arenson et al., 2002; Haeberli et al., 2006; Haeberli et al., 1998; Cicoira et
al., 2019; Kenner et al., 2017). The ERT measurements show a local resistivity peak under the rock glacier
(at c. 120 m distance, Figure 8b), and GST loggers indicate permafrost presence in the landform (Figures
855 1b and 8b). A rock glacier in the neighbouring valley from Gámanjunni-3 (Adjet rock glacier) had velocity
averages increasing from ~ 4.9 to ~ 9.8 m a⁻¹ (2009–2016) and maximum velocities from ~ 12 to ~ 69 m a⁻¹
(Eriksen et al., 2018). There, permafrost warming, topographic controls, and increased water access to
deeper permafrost layers and internal shear zones have been used to explain the kinematic behaviour at

Adjet rock glacier (Eriksen et al., 2018). The higher velocities of the rock glacier in relation to the
860 rockslide mass may indicate higher ice content or warmer ground temperatures, influencing rock glacier
kinematics (Kääb et al., 2007; Ikeda et al., 2008; Cicoira et al., 2019).

For Mannen highest velocities and resistivity values are observed below the back scarp and behind the
large fracture present between the back scarp and the unstable moving part of the slope. A similar setting
865 is observed at Jettan at Nordnesfjellet, which lies close to the Gámanjunni-3 site. There, ground ice
patches are observed in these cracks, governing movement rates (Blikra and Christiansen, 2014). The
ERT measurements indicate very high resistivity values in this zone ($> 100 \text{ k}\Omega\text{m}$), indicating either air or
snow/ice fill. However, there are no direct observations of ice.

Temporal movement – The displacement measurements indicate a clear seasonal pattern in Mannen based
870 on GNSS and laser measurements, and a possibly seasonal pattern at Gámanjunni-3 based on the GB-
InSAR time series (Figure 5). At both sites, it seems to be an acceleration during late winter and spring,
and lower velocities during summer and fall. Wirz et al. (2014) found a maximum displacement at
Mattertal (Switzerland) during fall and early winter and a minimum in spring. They point to meltwater
infiltration and a phase lag from GST of 2-4 months for landslide displacement. Weber et al. (2017)
875 presented a series of 8 years of fracture kinematics at 3500 m a.s.l. on the steep and highly fractured
Hörnligrat ridge (Matterhorn, Swiss Alps). They showed that reversible displacements dominate in winter
while irreversible enhanced fracture displacements are mainly observed in summer, likely indicating
thawing-related processes (e.g. meltwater percolation into fractures). However, this behaviour can
strongly differ from one fracture to another as seen at the Aiguille du Midi 3842 m a.s.l., France (Guillet
880 et al., unpublished). A similar pattern is observed for «Veslemannen» where meltwater infiltration and
thawing of seasonal frost along with precipitation episodes are discussed (Kristensen et al., 2021). The
instability on the Zugspitze crest (Germany/Austria) shows movements of $c. 20 \text{ mm a}^{-1}$ and highest
displacement rates during summer, with a reduction of up to 85 % during the remaining seasons (Mamot
et al., 2020). Gischig et al. (2011) found high winter and low summer velocities at the Randa rock slope
885 instability (Switzerland), and no correlation with rain fall. They could reproduce this pattern by thermo-
mechanical modelling, where surface temperature governed the variation. In the Jettan site near
Gamanjunni-3 Blikra et al. (2014) documented ice in fractures, and highest velocities during summer,
probably caused by melting of ice-patches in fractures.

The possible higher early spring and summer velocities and lower displacement rates during fall and
890 winter might be related to high water input in the fractures due to snow melt causing hydraulic/hydrostatic
pressures and contributing to the melting of ice/snow in fractures formed during the winter. During
summer and fall, the fractures might be free of ice/snow at the end of the melting season and water

infiltration might have less impact. The lower velocities at Mannen during years with lower snow cover (Figure 5f) also supports this interpretation. However, only thermo-mechanical modelling, like applied
895 by Gishig et al (2011) or Mamot et al. (2020), may increase the understanding of how this signal can influence rock mass deformation.

In both study sites, long-term Holocene displacement variations seem to be related to climate signals (Hilger et al., 2021). These observations agree also with other studies such as a study by Philips et al (2017), who report on 6000 years old ice sampled from a tension crack associated to a rock pillar at Piz
900 Kesch in the Eastern Swiss Alps. The rock pillar collapsed in 2014, and had a volume of around 150000 m³. Permafrost aggradation and degradation decrease the stability of intact rocks, both by weakening rock bonds (rock fatigue) and by critical and subcritical fracture propagation at sites with strongly varying cryostatic and hydrostatic conditions (Draebing and Krautblatter, 2019; Voigtländer et al., 2018). There certainly has been a long-term warming of our study sites since the LIA, and an accelerated warming
905 since c. 2000. This warming trend has been documented all over Europe (Etzelmüller et al., 2020), and is responsible for permafrost degradation in Norway (Borge et al., 2017), possibly influencing both rock glacier velocities and landslide triggering (Eriksen et al., 2018; Frauenfelder et al., 2018).

In summary, both sites show corresponding seasonality with increased early summer velocities. Combined with the knowledge of at least discontinuous permafrost to patchy permafrost at the sites, snow
910 and ice melt processes with associated water drainage in cracks are realistic explanations for a possible seasonality. There is evidence that the recently measured higher displacement rates in relation to Holocene values (Hilger et al., 2021) may be related to a warmer atmosphere, and can accelerate into the future. The triggering of «*Veslemannen*» described in detail by Kristensen et al. (2021) might be a first sign.

For Gámanjunni-3, a rapid acceleration of the rock-glacier like landform forming the southern part of the
915 rockslide, is possible, as described for various cases in the recent past in northern Norway (Eriksen et al., 2018), in the European Alps (Delaloye et al., 2008) and in Central Asia (Kääb et al., 2020). It could possibly lead to the triggering of secondary rock falls or debris flow, as described elsewhere (Lugon and Stoffel, 2010; Kummert et al., 2018), or movement can stop when the deforming ice is melted out.

920

925 6. Conclusions

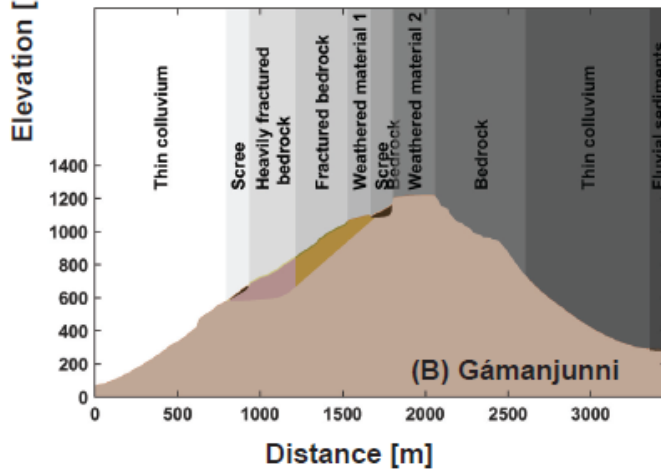
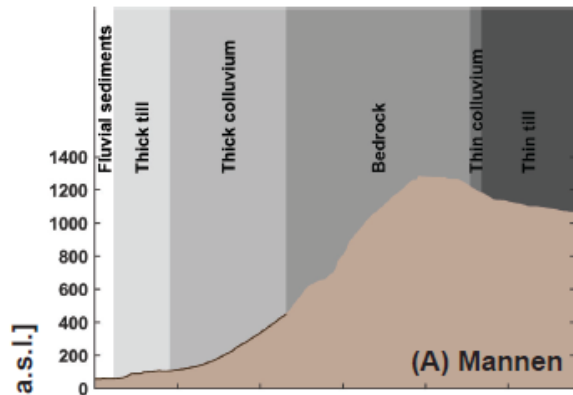
The following conclusions are drawn based on this study:

- 930 • Temperature measurements, numerical modelling and geophysical soundings indicate the existence of permafrost at both study sites: at Gámanjunni-3 permafrost seems to extend down to 700 m a.s.l. today, while at Mannen sporadic pockets of permafrost are possible.
- Surface air and ground temperatures have warmed significantly since *c.* 1900 with 1 °C and 1.5 °C, and highest temperatures are measured and modelled since 2000 at both study sites.
- 935 • Displacement rates of Gámanjunni-3 rockslide co-vary significantly with sub-surface resistivity and modelled ground temperatures. Increasing displacements rates seem to be associated with sub-zero ground temperatures and higher ground resistivity. This might be related to the presence of ground ice in fractures and pores close to the melting point, facilitating increased deformation.
- 940 • A seasonality of displacement has been observed, with increased velocities during late winter and early summer at both sites. This pattern may be linked to the timing of snow melt and water infiltration, leading to high water pressure. At Mannen, inter-annual variations may be related to snow cover thickness.
- 945 • The rock glacier associated to the Gámanjunni-3 rockslide show two to three times higher velocities ($> 100 \text{ m a}^{-1}$) and lower electrical resistivity than the rockslide part. The movement mechanisms are clearly different for both systems, and a mixture of water and ice contributing to the rock glacier movement is suggested.
- The permafrost in the study sites has certainly warmed and probably degraded since the LIA, with an accelerated pace since *c.* 2000. This atmospheric and associated permafrost warming might be a factor for the high measured deformation rates in relation to the Holocene average.
- 950 • A possible permafrost degradation and probable thawing at Gámanjunni-3 may result in the destabilization of the upper part of the plateau south of Gámanjunni-3, considerably increasing the susceptible volume for a worst-case collapse scenario.

APPENDICES

955 **APPENDIX 1 - Thermal modelling**

The thermal modelling requires a set of parameters and boundary conditions. For our modelling we defined zones with crisp boundaries, defining surface sediment cover, bedrock or fractured bedrock. For each of the zones a set of material properties were defined, following the system in earlier publications (e.g. Westermann et al., 2013). Most cover sediments are quite coarse-grained, with no organic material
960 (Figure A1). For Gámanjunni-3 we used a well-defined geological model to delineate the rockslide (Böhme et al., 2016; Böhme et al., 2019), while for Mannen the instability is much less defined. In the latter surficial material is thin, and bedrock at the surface in the slope, and coarse blocks at the plateau, dominates. For the sensitivity analysis we varied forcing air temperature, snow cover (by changing the N_f factor) and the water content, the latter only for Gamanjunni because of bedrock dominance with assumed
965 low water content for the Mannen site (Figure A2). Permafrost distribution and geometry varies with these parameters, indicating that reality is probably somewhere in between. Especially for the Mannen site located in the sporadic permafrost zone, the parameter variations show the influence of less snow or cooler SAT on the possible permafrost presence at the site (Figure A2b).

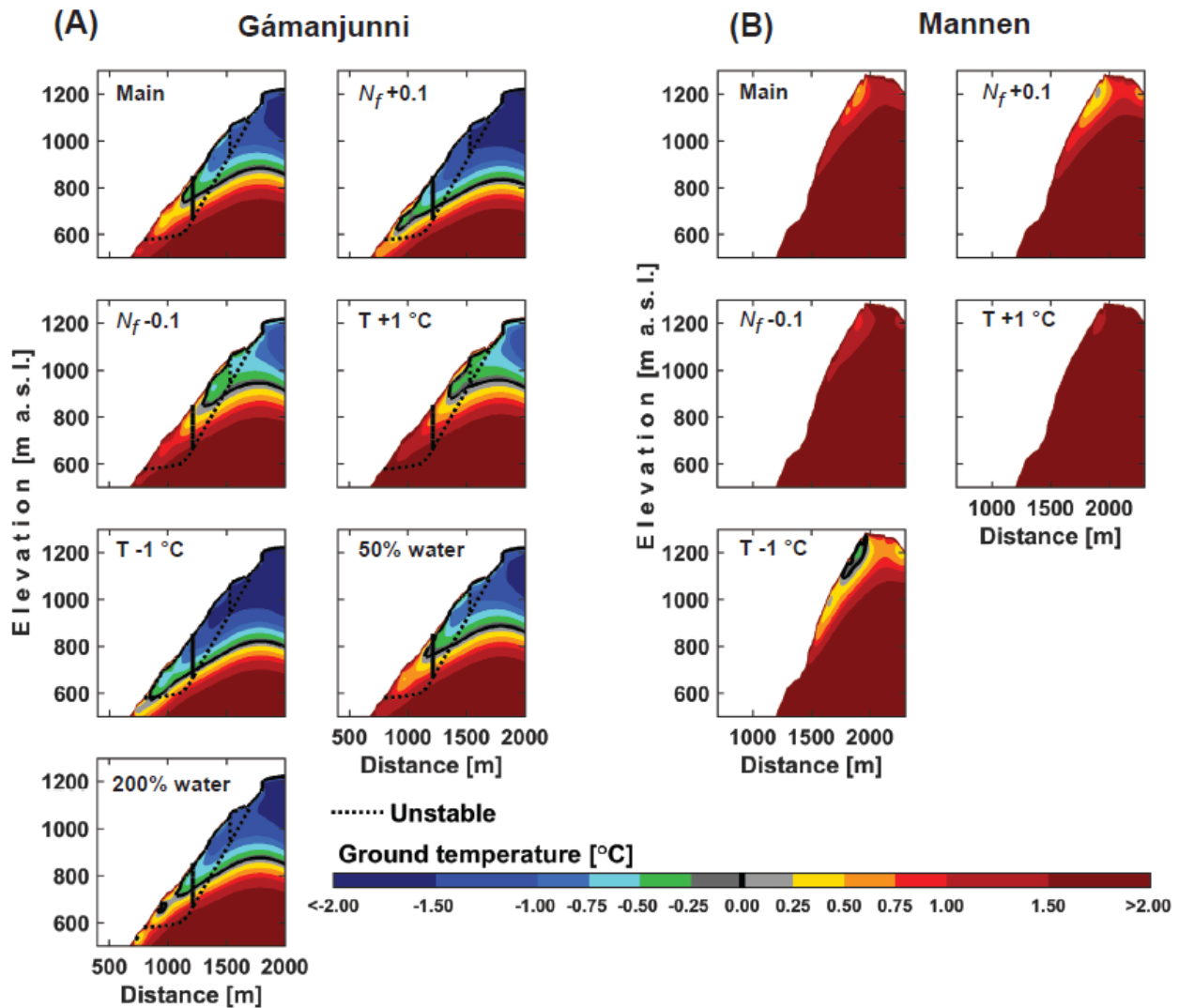


Depth [m]	Water	Min.	Org.	Air	MTA Man.	MTA Gám.
Bedrock						
0.0 -2.0	0.05	0.95	0.00	0.00	0.05	0.05
2.0 -10.0	0.05	0.95	0.00	0.00	0.20	0.20
10.0 -20.0	0.05	0.95	0.00	0.00	0.50	0.50
20.0 -100.0	0.05	0.95	0.00	0.00	5.00	5.00
Fluvial sediments						
0.0 -1.0	0.10	0.60	0.00	0.30	0.05	0.20
1.0 -2.0	0.40	0.60	0.00	0.00	0.05	0.20
2.0 -10.0	0.40	0.60	0.00	0.00	0.20	0.50
10.0 -20.0	0.05	0.95	0.00	0.00	0.50	5.00
20.0 -100.0	0.05	0.95	0.00	0.00	5.00	10.00
Fractured bedrock						
0.0 -2.0	0.05	0.80	0.00	0.15		0.05
2.0 -10.0	0.05	0.80	0.00	0.15		0.20
10.0 -20.0	0.10	0.90	0.00	0.00		0.50
>20.0	0.10	0.90	0.00	0.00		5.00
Heavily fractured bedrock						
0.0 -2.0	0.05	0.75	0.00	0.20		0.05
2.0 -5.0	0.05	0.75	0.00	0.20		0.20
5.0 -10.0	0.05	0.75	0.00	0.20		0.20
10.0 -20.0	0.15	0.80	0.00	0.05		0.50
>20.0	0.15	0.80	0.00	0.05		5.00
Scree						
0.0 -2.0	0.02	0.40	0.00	0.58		0.05
2.0 -5.0	0.02	0.40	0.00	0.58		0.20
5.0 -10.0	0.40	0.60	0.00	0.00		0.20
>10.0	0.40	0.60	0.00	0.00		0.50
Thin colluvium						
0.0 -2.0	0.30	0.60	0.00	0.10	0.05	
2.0 -5.0	0.40	0.60	0.00	0.00	0.20	
5.0 -10.0	0.40	0.60	0.00	0.00	0.20	
10.0 -20.0	0.05	0.95	0.00	0.00	0.50	
20.0 -100.0	0.05	0.95	0.00	0.00	5.00	
Thick colluvium						
0.0 -2.0	0.30	0.60	0.00	0.10	0.05	
2.0 -10.0	0.40	0.60	0.00	0.00	0.20	
10.0 -20.0	0.05	0.95	0.00	0.00	0.50	
Thick till						
0.0 -2.0	0.30	0.60	0.00	0.10	0.05	
2.0 -10.0	0.40	0.60	0.00	0.00	0.20	
10.0 -20.0	0.05	0.95	0.00	0.00	0.50	

970

Figure A1. The subsurface regions and parametrisation for the 2D thermal modelling for (A) Gámanjunni-3 and (B) Mannen profile. MTA = maximum triangle area, which is a measure describing the spatial resolution of the triangles in the employed finite element method solver. The table shows the stratigraphy chosen for the different regions, along with the depth parametrisation and volumetric contents of water/ice, mineral, organic and air components, following Westermann et al. (2013).

975



980 **Figure A2.** Sensitivity plots for the modelled ground thermal regime of (A) Gámanjinni-3 and (B) Mannen. The “Main” run
 is the presented run in Figure 7, the subplots show modelled ground temperature in response to changes in nF factor (“ $nF0.1$ ”
 means that N_f is increased by 0.1; “ $N_f-0.1$ ” means that N_f is decreased by 0.1), forcing SAT (“ $T+1\text{ °C}$ ” means that SAT is
 increased by 1 °C ; “ $T-1\text{ °C}$ ” means that SAT is decreased by 1 °C) and water content in the subsurface (“50 % water” means
 that water content is halved and the remaining fraction is added to the mineral fraction; “200 % water” means that water content
 985 is doubled by reducing the mineral fraction). GT and permafrost geometry change in response to these variations. It is
 noteworthy at Mannen that only small changes in snow or forcing temperatures would produce considerably more permafrost
 in the unstable area. Due to limited assumed sediment cover for the Mannen site, we did no sensitivity plot for the water content
 in bedrock, which is low.

APPENDIX B - 3D visualisation of ERT profiles

990 We projected all ERT profiles in a 3D topographic model in MATLAB (© Mathworks) (Figures B1 and B2). The inversion was performed with the same parameters, and the colours follow the transition between possible thawed to possible frozen derived from the laboratory analysis (Figure 3). The profiles in the rock walls and steep slopes do not always follow straight lines because of security issues in the field. In the plots we indicated the moving block at Gámanjunni-3, and the plateau crests at both sites. It is clear that the inversion procedures may have produced artefacts at strong topographic transitions. However, the clear patterns described in the main text associated to fractures and snow-free rock walls are visible.

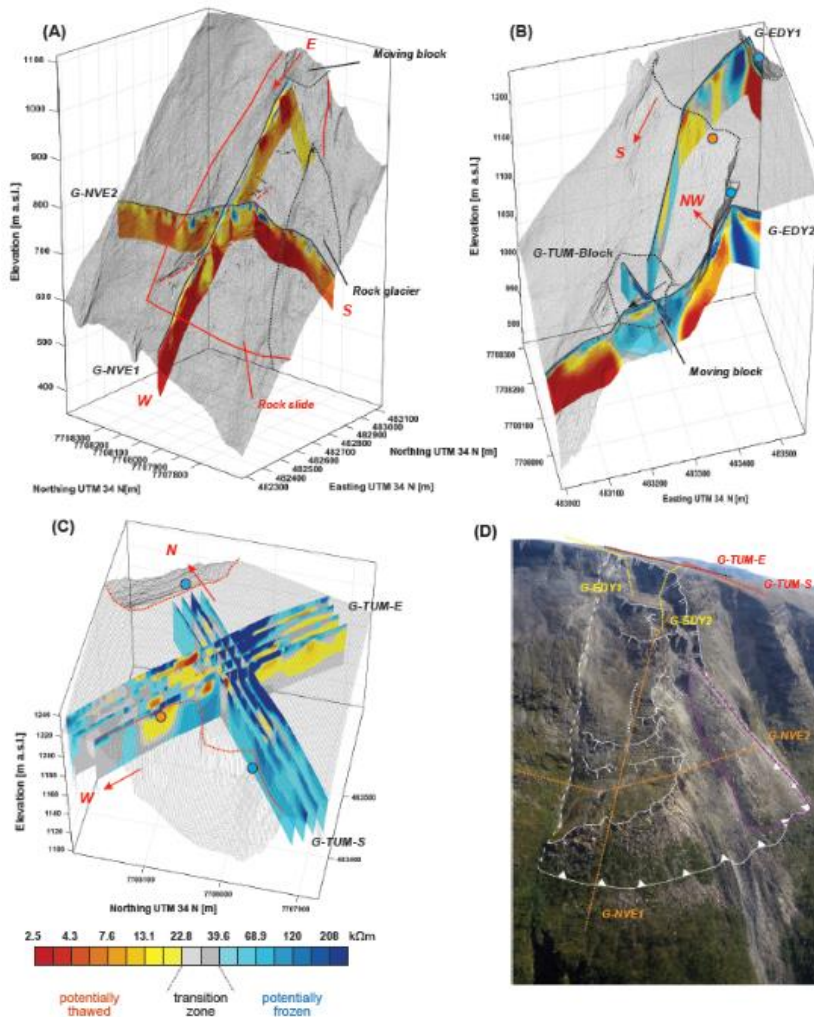
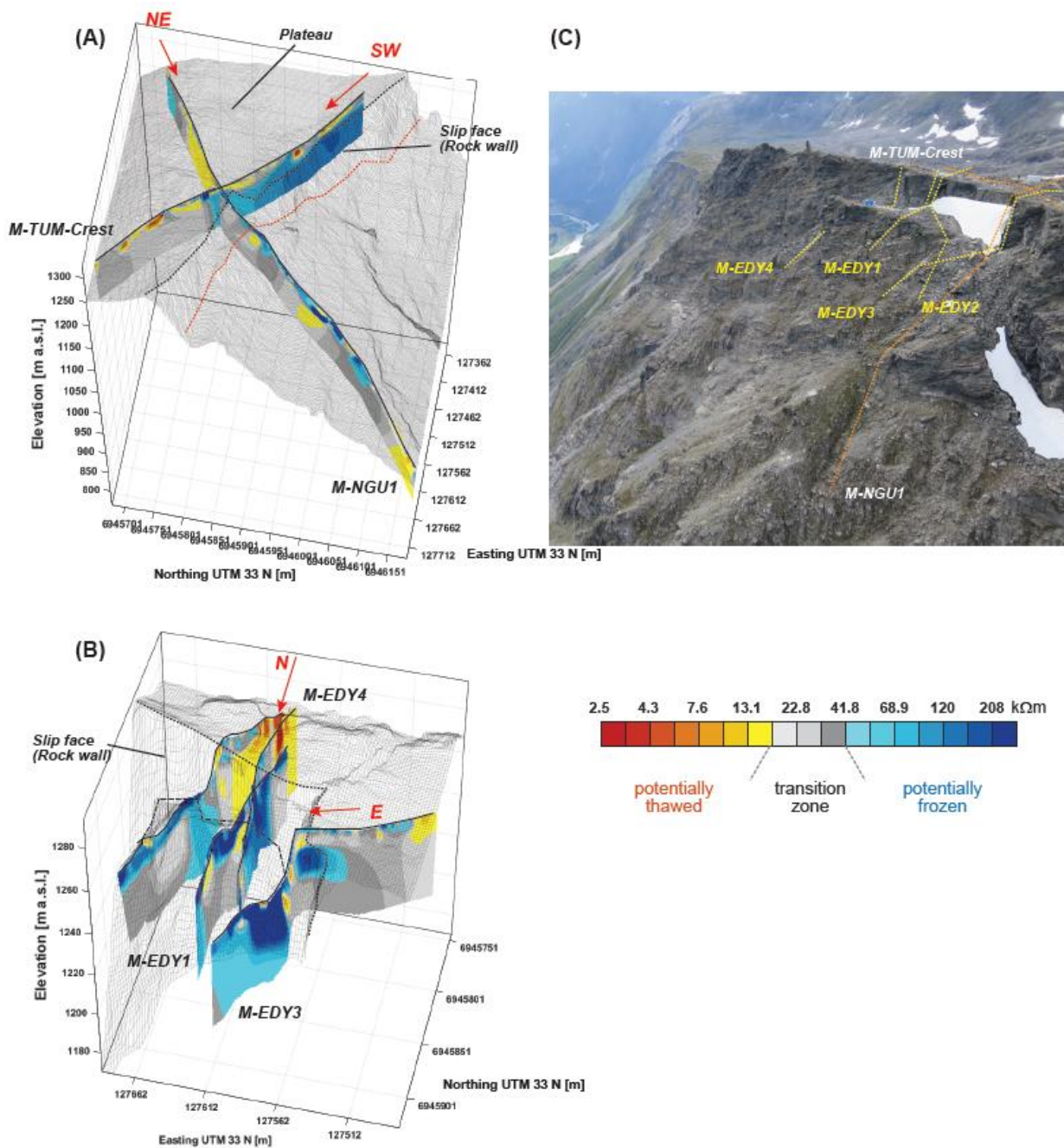


Figure B1. 3D plots showing the ERT profiles in relation to topography for Gámanjunni-3. (A): G-NVE1 and G-NVE2. The rockslide (red) and rock glacier (black) are delineated. The black stippled line indicates the lower limit of the moving block. (B): The rock wall profiles G-EDY1 and 2 and the ERT profile over the moving block (G-TUM-Block). The moving block is indicated by the black line, as is the crest between rock wall and top plateau. The circles show the location of the rock wall loggers (orange = $> 0^{\circ}\text{C}$ in annual average, blue = $< 0^{\circ}\text{C}$). (C): Quasi 3-D profiles on the plateau (G-TUM-S and E). The red line shows the crest, the circles like in (B). (D): Oblique image of the instability at Gámanjunni-3 as Fig. 2a. The approximate location of the ERT profiles is drawn on the images. © NGU.



1030 **Figure B2.** 3D plots showing the ERT profiles in relation to topography for the Mannen instability. The arrows indicate topographic orientation of the profiles. The black stippled line indicate the crest forming the transition between plateau and rock walls. (A): M-TUM-Scarp and M-NGU. Plateau and rock wall is indicated in the plot. (B): Rock wall ERT profiles M-EDY1 to 4. They deviate from straight lines because of high topography and safety constraints. (C) Oblique air photo © P.-A. Duveillard), with approximate location of the ERT profile lines.

APPENDIX C - Background information for the 4PM modelling

1035

The main principles for the 4Pmodel are (see Hauck et al (2011) and Mewes et al. (2017)):

- The electrical mixing rule (Archie's law which was found empirically by Archie 1942, and later theoretically confirmed by e.g. Sen et al. (1981)),
- An extension to a 4-phase medium of the seismic time-averaged approach for P-wave velocities (modified after Timur (1968)), and
- The necessary assumption that the sum of all volumetric fractions of the ground is equal to one.

1040

Based on these principles, the 4PM uses the following equations to determine the volumetric ice (f_i), water (f_w) and air content (f_a) for a given porosity model $\Phi(x,z)$ ($\Phi = 1 - f_r$; f_r being the rock content):

$$f_w = \left(\frac{a\rho_w(1-f_r)^n}{\rho(1-f_r)^m} \right)^{1/n} \quad (1)$$

1045

$$f_i = \frac{v_i v_a}{v_a - v_i} \left[\frac{1}{v} - \frac{f_r}{v_r} - \frac{1-f_r}{v_a} + \left(\frac{a\rho_w(1-f_r)^n}{\rho(1-f_r)^m} \right)^{1/n} \left(\frac{1}{v_a} - \frac{1}{v_w} \right) \right] \quad (2)$$

$$f_a = \frac{v_i v_a}{v_i - v_a} \left[\frac{1}{v} - \frac{f_r}{v_r} + \frac{1}{v_i} (f_r - 1) - \left(\frac{a\rho_w(1-f_r)^n}{\rho(1-f_r)^m} \right)^{1/n} \left(\frac{1}{v_w} - \frac{1}{v_i} \right) \right] \quad (3)$$

1050

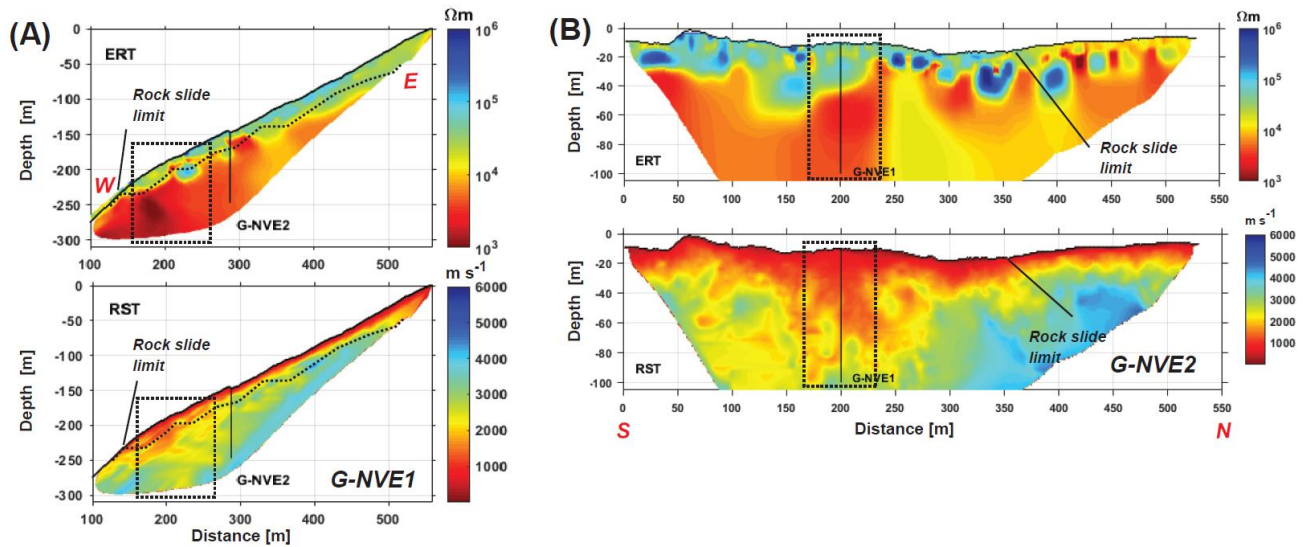
where a ($= 1$ in many applications), m (cementation exponent) and n (saturation exponent) are empirically determined parameters (Archie, 1942), ρ_w is the resistivity of the pore water, v_r, v_w, v_a, v_i are the theoretical P-wave velocities of the four components, and $\rho(x,z)$ and $v(x,z)$ are the inverted resistivity and P-wave velocity distributions, respectively.

1055

The pore water resistivity (ρ_w) and the porosity Φ are the most sensitive for the calculation of the ice and water content (Hauck et al., 2011). As there are often lack of borehole or laboratory data, given exact information around these parameters, there is a uncertainty involved in the modelling approach. This uncertainty has been addressed in several publications, and can be found in e.g. Pellet et al. (2016) and Mewes et al. (2017).

While Figure 11 in the main text shows and discusses the results of the 4PM for two profiles at Gámanjunki-3, the Figure C1 shows the original inverted ERT and RST tomograms of the two profiles.

1060



1065

Figure C1: Resistivity and seismic velocities for the 4PM model at Gámanjunki-3 for (A) G-NVE1 and (B) G-NVE2. Note that the profiles are subsets of G-NVE1 and -2, and thus shorter than shown in Figure 8 and Figure B1. Note also that the colours for the electrical resistivity do not correspond to the colour scale derived from the laboratory analysis (Figure 3), but are the original results first presented in Hauck and Hilbich (2018). The possible fracture zones mentioned in the manuscript are indicated as a box, while the possible lower permafrost limit is drawn as a line in (A).

1070

Acknowledgement

1075

This study was part of the project ‘CryoWALL – Permafrost slopes in Norway’ (243784/CLE) funded by the Research Council of Norway (RCN). Additional funding was provided by the Norwegian Geological Survey, Trondheim, the Department of Geosciences, University of Oslo, the Norwegian Water and Energy Directorate (NVE), the EDYTEM, Chambéry, France and the Deutsche Forschungsgemeinschaft (DFG) through the Technical University of Munich (TUM) International Graduate School of Science and Engineering (IGSSE), GSC 81. The TerraSAR-X satellite data set was provided through the German Aerospace Centre (DLR) TerraSAR-X AO projects GEO0565 and GEO0764. The satellite corner reflectors were initially funded by the Norwegian Space Agency, and the processing of this data is now

1080 carried out as part of the InSAR Norway ground motion service, hosted by NGU (<http://insar.ngu.no>). Jan
Steinar Rønning from NGU provided ~~data~~ raw data for the ERT profile M-NGU at Mannen. Thanks to
extensive help in field by NVE colleagues, in particular Anders Furuseth and Roald Elvenes at NVE-
Kåfjord, and Kjell. R. Jogerud and Pål R. Hagen Røssevold at NVE-Stranda). Lars Harald Blikra from
1085 NVE supported the study extensively. Ove Brynhildsvoll, Jaroslav Obu, Juditha Schmidt, Erling Thokle
Hovden and Trond Eiken (UiO), Paula Hilger (Høgskolen i Vestlandet, Sogndal) and Regina Pläsken and
Maximilian Reinhard (TUM) took part in field work. Finally, thanks to the very insightful reviews by Dr.
Oliver Sass and Dr. Louise Vick, which improved the manuscript significantly.

Contributions

1090 BE took the initiative for the study, and coordinated the synthesis of the various data sets. He wrote the
first drafts of the manuscript, and designed most of the figures. JC carried out the numerical modelling of
the ground thermal regime at both sites, provided background information and modelling results and
developed visualisation tools for the ERT profiles. SW developed much of the principles of the numerical
modelling code, and supervised the analysis. FM coordinated and participated in the field investigation
1095 of the ground temperature and ERT rock wall surveys at both sites. PAD and EM participated at the ERT
surveys at Mannen and PAD and LR at Gámanjunni-3. AA, LK and IS contributed with on-site
knowledge, interpretation and displacement data from laser, GNSS and GB-InSAR, on behalf of NVE.
BJ, JL and MK contributed with the laboratory analysis of the bedrock samples at the Technical
University of Munich (Germany), and ERT profiles conducted in field at both sites. RH and MB from
1100 NGU contributed with a structural-geological model of the sites. CHa and CHi from the University of
Fribourg, Switzerland, applied the 4-phase-model and submitted a report from the two long profiles at
Gámanjunni-3. They also commented and improved the inversion and interpretation of all the other ERT
profiles. HE provided and interpreted the TerraSAR-X data from Gámanjunni-3, along with ground
temperature logger data. TRL coordinated installation and development of the satellite corner reflector
1105 processing chain and supervised the TerraSAR-X InSAR processing. All authors contributed actively to
the final versions of the manuscript.

Competing interests: The authors declare that they have no conflict of interest.

1110

7. References

- 1115 Arenson, L., Hoelzle, M., and Springman, S.: Borehole deformation measurements and internal structure of some rock glaciers in Switzerland, *Permafrost and Periglacial Processes*, 13, 117–135, 2002.
- Austria, G. S. o.: *Electrical Resistivity Tomography at Gamanjunni, Troms, Norway*, GSA, Vienna, 12, 2016.
- Bardi, F., Raspini, F., Ciampalini, A., Kristensen, L., Rouyet, L., Lauknes, T. R., Frauenfelder, R., and Casagli, N.: Space-borne and ground-based InSAR data integration: the Åknes test site, *Remote Sensing*, 8, 237, 2016.
- 1120 Barker, R.: Depth of investigation of collinear symmetrical four-electrode arrays, *Geophysics*, 54, 1031-1037, 1989.
- Blikra, L., Majala, G., Anda, E., Berg, H., Eikenæs, O., Helgås, G., Oppikofer, T., Hermanns, R., and Böhme, M.: Fare-og risikoklassifisering av ustabile fjellparti–Faresoner, arealhåndtering og tiltak, *Norges Geologiske Undersøkelser (NGU)*, 47, 2016.
- 1125 Blikra, L. H., and Christiansen, H. H.: A field-based model of permafrost-controlled rockslide deformation in northern Norway, *Geomorphology*, 208, 34-49, <http://dx.doi.org/10.1016/j.geomorph.2013.11.014>, 2014.
- Borge, A. F., Westermann, S., Solheim, I., and Etzelmuller, B.: Strong degradation of palsas and peat plateaus in northern Norway during the last 60 years, *The Cryosphere*, 11, 1-16, <http://dx.doi.org/10.5194/tc-11-1-2017>, 2017.
- 1130 Brenning, A., Gruber, S., and Hoelzle, M.: Sampling and statistical analyses of BTS measurements, *Permafrost and Periglacial Processes*, 16, 383-394, 2005.
- Böhme, M., Bunkholt, H., Dehls, J., Oppikofer, T., Hermanns, R., Dalsegg, E., Kristensen, L., Lauknes, T., and Eriksen, H.: Geologisk modell og fare-og risikoklassifisering av det ustabile fjellpartiet Gamanjunni 3 i Mandalen, Troms, *NGU Rapport*, 64, 2016.
- 1135 Böhme, M., Hermanns, R., Gosse, J., Hilger, P., Eiken, T., Lauknes, T., and Dehls, J.: Comparison of monitoring data with paleo–slip rates: Cosmogenic nuclide dating detects acceleration of a rockslide, *Geology*, 47, 339-342, 2019.
- Cicoira, A., Beutel, J., Faillettaz, J., and Vieli, A.: Water controls the seasonal rhythm of rock glacier flow, *Earth and Planetary Science Letters*, 528, 115844, 2019.
- 1140 Crosta, G., Agliardi, F., Rivolta, C., Alberti, S., and Dei Cas, L.: Long-term evolution and early warning strategies for complex rockslides by real-time monitoring, *Landslides*, 14, 1615-1632, 2017.
- Dabrowski, M., Krotkiewski, M., and Schmid, D. W.: MILAMIN: MATLAB-based finite element method solver for large problems, *Geochemistry, Geophysics, Geosystems*, 9, Q04030, 10.1029/2007GC001719, 2008.
- Dahle, H., Anda, E., Saintot, A., and Sætre, S.: *Faren for fjellskred fra fjellet Mannen i Romsdalen*, NGU, Trondheim, 2008.
- 1145 Dahle, H., Saintot, A., Blikra, L., and Anda, E.: *Geofagleg oppfølging av ustabil fjellparti ved Mannen i Romsdalen*, NGU report, 2010.
- Dahlin, T., and Zhou, B.: A numerical comparison of 2D resistivity imaging with 10 electrode arrays, *Geophysical prospecting*, 52, 379-398, 2004.

- 1150 Dalsegg, E., and Rønning, J. S.: Geofysiske målinger på Mannen i Rauma kommune, Møre og Romsdal, Norwegian Geological Survey (NGU) report, 2012.
- Davidson, E. A., and Janssens, I. A.: Temperature sensitivity of soil carbon decomposition and feedbacks to climate change, *Nature*, 440, 165, 2006.
- Davies, M. C. R., Hamza, O., and Harris, C.: The effect of rise in mean annual temperature on the stability of rock slopes containing ice-filled discontinuities, *Permafrost and Periglacial Processes*, 12, 137-144, 2001.
- 1155 Delaloye, R., Perruchoud, E., Avian, M., Kaufmann, V., Bodin, X., Hausmann, H., Ikeda, A., Käab, A., Kellerer-Pirklbauer, A., and Krainer, K.: Recent interannual variations of rock glacier creep in the European Alps, 2008.
- Draebing, D., and Krautblatter, M.: The efficacy of frost weathering processes in alpine rockwalls, *Geophysical Research Letters*, 46, 6516-6524, 2019.
- 1160 Eriksen, H., Rouyet, L., Lauknes, T., Berthling, I., Isaksen, K., Hindberg, H., Larsen, Y., and Corner, G.: Recent acceleration of a rock glacier complex, Adjat, Norway, documented by 62 years of remote sensing observations, *Geophysical Research Letters*, 45, 8314-8323, 2018.
- Eriksen, H. Ø., Lauknes, T. R., Larsen, Y., Corner, G. D., Bergh, S. G., Dehls, J., and Kierulf, H. P.: Visualizing and interpreting surface displacement patterns on unstable slopes using multi-geometry satellite SAR interferometry (2D InSAR), *Remote Sens Environ*, 191, 297-312, 2017.
- 1165 Eriksen, H. Ø.: Instrumentation and temperature data (2013–2017), Gámanjunni 3 rockslide and rock glacier, Mandalen, Troms., NORUT, Tromsø9/2018, 2018.
- Etzelmüller, B., Guglielmin, M., Hauck, C., Hilbich, C., Hoelzle, M., Isaksen, K., Noetzli, J., Oliva, M., and Ramos, M.: Twenty years of European mountain permafrost dynamics—the PACE legacy, *Environ Res Lett*, 15, 104070, 2020.
- 1170 Evans, S. G., and DeGraff, J. V.: Catastrophic landslides: effects, occurrence, and mechanisms, Geological Society of America, 2002.
- Farbrot, H., Isaksen, K., Etzelmüller, B., and Gisnas, K.: Ground Thermal Regime and Permafrost Distribution under a Changing Climate in Northern Norway, *Permafrost and Periglacial Processes*, 24, 20-38, Doi 10.1002/Ppp.1763, 2013.
- 1175 Fischer, L., Purves, R. S., Huggel, C., Noetzli, J., and Haeberli, W.: On the influence of topographic, geological and cryospheric factors on rock avalanches and rockfalls in high-mountain areas, *Nat Hazard Earth Sys*, 12, 241-254, 10.5194/nhess-12-241-2012, 2012.
- Frauenfelder, R., Isaksen, K., Lato, M. J., and Noetzli, J.: Ground thermal and geomechanical conditions in a permafrost-affected high-latitude rock avalanche site (Polvartinden, northern Norway), *The Cryosphere*, 12, 1531-1550, 2018.
- GeoExpert: Gamanjunni rock mass movement site / Kåfjord, Norway. Hybrid seismic mapping of the subsurface structures., Embrach, Austria, 2016.
- 1185 Gischig, V. S., Moore, J. R., Evans, K. F., Amann, F., and Loew, S.: Thermomechanical forcing of deep rock slope deformation: 2. The Randa rock slope instability, *Journal of Geophysical Research: Earth Surface*, 116, 2011.

- Gisnas, K., Etzelmüller, B., Farbrøt, H., Schuler, T. V., and Westermann, S.: CryoGRID 1.0: Permafrost Distribution in Norway estimated by a Spatial Numerical Model, *Permafrost and Periglacial Processes*, 24, 2-19, Doi 10.1002/Ppp.1765, 2013.
- 1190 Gisnås, K., Westermann, S., Schuler, T. V., Litherland, T., Isaksen, K., Boike, J., and Etzelmüller, B.: A statistical approach to represent small-scale variability of permafrost temperatures due to snow cover, *The Cryosphere*, 8, 2063-2074, 10.5194/tc-8-2063-2014, 2014.
- Gisnås, K., Etzelmüller, B., Lussana, C., Hjort, J., Sannel, B., Isaksen, K., Westermann, S., Kuhry, P., Christiansen, H. H., Frampton, A., and Åkermann, J.: Permafrost map for Norway, Sweden and Finland, *Permafrost and Periglacial Processes*, 20, <http://dx.doi.org/10.1002/ppp.1922>, 2016a.
- 1195 Gisnås, K., Westermann, S., Schuler, T., Melvold, K., and Etzelmüller, B.: Small-scale variation of snow in a regional permafrost model, *The Cryosphere*, 10, 1201-1215, <http://dx.doi.org/10.5194/tc-10-1201-2016>, 2016b.
- Gruber, S., Hoelzle, M., and Haeberli, W.: Rock-wall temperatures in the Alps: Modelling their topographic distribution and regional differences, *Permafrost and Periglacial Processes*, 15, 299-307, Doi 10.1002/Ppp.501, 2004.
- 1200 Gruber, S., and Haeberli, W.: Permafrost in steep bedrock slopes and its temperature-related destabilization following climate change, *Journal of Geophysical Research-Earth Surface*, 112, -, Artn F02s18 Doi 10.1029/2006jf000547, 2007.
- 1205 Gruber, S., and Haeberli, W.: Mountain permafrost, in: *Permafrost soils*, Springer, 33-44, 2009.
- Haberkorn, A., Hoelzle, M., Phillips, M., and Kenner, R.: Snow as a driving factor of rock surface temperatures in steep rough rock walls, *Cold Reg Sci Technol*, 118, 64-75, 2015.
- Haberkorn, A., Wever, N., Hoelzle, M., Phillips, M., Kenner, R., Bavay, M., and Lehning, M.: Distributed snow and rock temperature modelling in steep rock walls using Alpine3D, *Cryosphere*, 11, 585-607, 2017.
- 1210 Haeberli, W.: Die Basis Temperatur der winterlichen Schneedecke als möglicher Indikator für die Verbreitung von Permafrost., *Zeitschrift für Gletscherkunde und Glazialgeologie*, 9, 221-227, 1973.
- Haeberli, W., Hoelzle, M., Kaeae, A., Keller, F., Vonder, M. D., and Wagner, S.: Ten years after drilling through the permafrost of the active rock glacier Murtel, Eastern Swiss Alps; answered questions and new perspectives, in: *Permafrost; seventh international conference, proceedings.*, edited by: Lewkowicz, A. G., and Allard, M., *Collection Nordicana*, Centre d'Etudes Nordiques, Université Laval, Québec, PQ, Canada, 403-410, 1998.
- 1215 Haeberli, W., Hallet, B., Arenson, L., Elconin, R., Humlun, O., Kaab, A., Kaufmann, V., Ladanyi, B., Matsuoka, N., Springman, S., and Vonder Muhll, D.: Permafrost creep and rock glacier dynamics, *Permafrost and Periglacial Processes*, 17, 189-214, 10.1002/ppp.561, 2006.
- 1220 Haeberli, W., Noetzi, J., Arenson, L., Delaloye, R., Gaertner-Roer, I., Gruber, S., Isaksen, K., Kneisel, C., Krautblatter, M., and Phillips, M.: Mountain permafrost: development and challenges of a young research field, *J Glaciol*, 57, 1043-1058, 2010.
- Hasler, A., Gruber, S., Font, M., and Dubois, A.: Advective Heat Transport in Frozen Rock Clefts: Conceptual Model, Laboratory Experiments and Numerical Simulation, *Permafrost and Periglacial Processes*, 22, 378-389, 10.1002/ppp.737, 2011.
- 1225

- Hauck, C.: Frozen ground monitoring using DC resistivity tomography, *Geophysical Research Letters*, 29, 12-11-12-14, 2002.
- 1230 Hauck, C., Isaksen, K., Vonder Mühll, D., and Sollid, J. L.: Geophysical surveys designed to delineate the altitudinal limit of mountain permafrost: an example from Jotunheimen, Norway, *Permafrost and Periglacial Processes*, 15, 191-205, 2004.
- Hauck, C., Boettcher, M., and Maurer, H.: A new model for estimating subsurface ice content based on combined electrical and seismic data sets, *Cryosphere*, 5, 453-468, 10.5194/tc-5-453-2011, 2011.
- Hauck, C., and Hilbich, C.: 4-phase model simulations Gamanjunki, Norway, 2018. NVE report, available on <https://www.nve.no/media/7646/report-gamanjunki-4phasemodel-unifr-2018.pdf>, NVE, Oslo, 2018.
- 1235 Henderson, I., and Saintot, A.: Fjellskredundersøkelser i Møre og Romsdal, NGU report, 2007.
- Henderson, I. H., and Saintot, A.: Regional spatial variations in rockslide distribution from structural geology ranking: an example from Storfjorden, western Norway, *Geological Society, London, Special Publications*, 351, 79-95, 2011.
- 1240 Hermanns, R., Blikra, L., Anda, E., Saintot, A., Dahle, H., Oppikofer, T., Fischer, L., Bunkholt, H., Böhme, M., Dehls, J., Lauknes, T., Redfield, T., Osmundsen, P., and Eiken, T.: Systematic Mapping of Large Unstable Rock Slopes in Norway, in: *Landslide Science and Practice*, edited by: Margottini, C., Canuti, P., and Sassa, K., Springer Berlin Heidelberg, 29-34, 2013a.
- Hermanns, R. L., Dahle, H., Bjerke, P. L., Crosta, G. B., Anda, E., Blikra, L. H., Saintot, A., and Longva, O.: Rockslide Dams in Møre og Romsdal County, Norway, in: *Landslide Science and Practice*, Springer, 3-12, 2013b.
- 1245 Hermanns, R. L., Oppikofer, T., Roberts, N. J., and Sandøy, G.: Catalogue of historical displacement waves and landslide-triggered tsunamis in Norway, in: *Engineering geology for society and territory*, edited by: Lollino, G., Springer, 2014.
- 1250 Hilbich, C., Hauck, C., Hoelzle, M., Scherler, M., Schudel, L., Voelksch, I., Muehll, D. V., and Maeusbacher, R.: Monitoring mountain permafrost evolution using electrical resistivity tomography: A 7-year study of seasonal, annual, and long-term variations at Schilthorn, Swiss Alps, *Journal of Geophysical Research-Earth Surface*, 113, -, 10.1029/2007JF000799 2008.
- 1255 Hilger, P., Hermanns, R. L., Gosse, J. C., Jacobs, B., Eitzelmüller, B., and Krautblatter, M.: Multiple rock-slope failures from Mannen in Romsdal Valley, western Norway, revealed from Quaternary geological mapping and ¹⁰Be exposure dating, *The Holocene*, 28, 1841-1854, 2018.
- Hilger, P., Hermanns, R., Czekirka, J., Myhra, K. S., Gosse, J., and Eitzelmüller, B.: Permafrost as a first order control on long-term rock-slope deformation in the (Sub-)Arctic, *Quaternary Science Reviews*, 251, 106718, 2021.
- 1260 Hjort, J., Karjalainen, O., Aalto, J., Westermann, S., Romanovsky, V. E., Nelson, F. E., Eitzelmüller, B., and Luoto, M.: Degrading permafrost puts Arctic infrastructure at risk by mid-century, *Nature Communications*, 9, 5147, 10.1038/s41467-018-07557-4, 2018.
- Hughes, A. L., Gyllencreutz, R., Lohne, Ø. S., Mangerud, J., and Svendsen, J. I.: The last Eurasian ice sheets—a chronological database and time-slice reconstruction, *DATED-1, Boreas*, 45, 1-45, 2016.

- 1265 Ikeda, A., Matsuoka, N., and Kaab, A.: Fast deformation of perennially frozen debris in a warm rock glacier in the Swiss Alps: An effect of liquid water, *Journal of Geophysical Research-Earth Surface*, 113, 10.1029/2007JF000859, 2008.
- Isaksen, K., Holmlund, P., Sollid, J. L., and Harris, C.: Three deep alpine-permafrost boreholes in Svalbard and Scandinavia, *Permafrost and Periglacial Processes*, 12, 13-25, 2001.
- 1270 Isaksen, K., Hauck, C., Gudevang, E., Ødegård, R. S., and Sollid, J. L.: Mountain permafrost distribution on Dovrefjell and Jotunheimen, southern Norway, based on BTS and DC resistivity tomography data, *Norsk Geografisk Tidsskrift*, 56, 122-136, 2002.
- Jia, H., Xiang, W., and Krautblatter, M.: Quantifying rock fatigue and decreasing compressive and tensile strength after repeated freeze-thaw cycles, *Permafrost and Periglacial processes*, 26, 368-377, 2015.
- 1275 Kenner, R., Phillips, M., Beutel, J., Hiller, M., Limpach, P., Pointner, E., and Volken, M.: Factors controlling velocity variations at short-term, seasonal and multiyear time scales, Ritigraben rock glacier, Western Swiss Alps, *Permafrost and Periglacial Processes*, 28, 675-684, 2017.
- Krautblatter, M., and Hauck, C.: Electrical resistivity tomography monitoring of permafrost in solid rock walls, *Journal of Geophysical Research-Earth Surface*, 112, -, 2007.
- 1280 Krautblatter, M., Verleysdonk, S., Flores-Orozco, A., and Kemna, A.: Temperature-calibrated imaging of seasonal changes in permafrost rock walls by quantitative electrical resistivity tomography (Zugspitze, German/Austrian Alps), *Journal of Geophysical Research-Earth Surface*, 115, -, 2010.
- Krautblatter, M., Funk, D., and Günzel, F. K.: Why permafrost rocks become unstable: a rock–ice-mechanical model in time and space, *Earth Surface Processes and Landforms*, 38, 876-887, 10.1002/esp.3374, 2013.
- 1285 Kristensen, L., Czekirda, J., Nicolet, P., Etzelmüller, B., Abellan, A., Skrede, I., Blikra, L. H., Pullarello, J., Penna, I., and Oldani, S.: Movements, failure and climatic control of the Veslemannen rockslide, Western Norway, *Landslides*, 2021.
- Kummert, M., Delaloye, R., and Braillard, L.: Erosion and sediment transfer processes at the front of rapidly moving rock glaciers: Systematic observations with automatic cameras in the western Swiss Alps, *Permafrost and Periglacial Processes*, 29, 21-33, 2018.
- 1290 Kääh, A., Frauenfelder, R., and Roer, I.: On the response of rockglacier creep to surface temperature increase, *Global and Planetary Change*, 56, 172-187, 10.1016/j.gloplacha.2006.07.005, 2007.
- Kääh, A., Strozzi, T., Bolch, T., Caduff, R., Trefall, H., Stoffel, M., and Kokarev, A.: Inventory, motion and acceleration of rock glaciers in Ile Alatau and Kungöy Ala-Too, northern Tien Shan, since the 1950s, *The Cryosphere Discussions*, 1-37, 2020.
- 1295 Larsen, Y., Engen, G., Lauknes, T., Malnes, E., and Høgda, K.: A generic differential InSAR processing system, with applications to land subsidence and SWE retrieval, *Proc. Advances in SAR interferometry from ENVISAT and ERS missions (FRINGE 2005)*, ESA ESRIN, Frascati, Italy, 28, 2005.
- Lauknes, T. R., Shanker, A. P., Dehls, J. F., Zebker, H. A., Henderson, I. H. C., and Larsen, Y.: Detailed rockslide mapping in northern Norway with small baseline and persistent scatterer interferometric SAR time series methods, *Remote Sens Environ*, 114, 2097-2109, 10.1016/j.rse.2010.04.015, 2010.
- 1300 Leinauer, J.: Controls of permafrost-related rock slope instabilities exemplified at the Gamanjunni (Norway), MSc, *Engineering Geology & Hydrogeology*, Technical University of Munich, Munchen, 2017.

- 1305 Lewkowicz, A. G., Bonnaventure, P. P., Smith, S. L., and Kuntz, Z.: Spatial and Thermal Characteristics of Mountain Permafrost, Northwest Canada, *Geografiska Annaler Series a-Physical Geography*, 94A, 195-213, DOI 10.1111/j.1468-0459.2012.00462.x, 2012.
- Loke, M. H., and Barker, R. D.: Rapid least-squares inversion of apparent resistivity pseudosections using a quasi-Newton method., *Geophysical Prospecting*, 44, 131-152, 1995.
- 1310 Luethi, R., Phillips, M., and Lehning, M.: Estimating non-conductive heat flow leading to intra-permafrost Talik formation at the Ritigraben Rock Glacier (Western Swiss Alps), *Permafrost and Periglacial Processes*, 28, 183-194, 2017.
- Lugon, R., and Stoffel, M.: Rock-glacier dynamics and magnitude–frequency relations of debris flows in a high-elevation watershed: Ritigraben, Swiss Alps, *Global and Planetary Change*, 73, 202-210, 2010.
- 1315 Lussana, C., Saloranta, T., Skaugen, T., Magnusson, J., Tveito, O. E., and Andersen, J.: seNorge2 daily precipitation, an observational gridded dataset over Norway from 1957 to the present day, *Earth System Science Data*, 10, 235, 2018.
- Magnin, F., Deline, P., Ravel, L., Noetzi, J., and Pogliotti, P.: Thermal characteristics of permafrost in the steep alpine rock walls of the Aiguille du Midi (Mont Blanc Massif, 3842 m asl), *The Cryosphere*, 9, 109-121, 2015a.
- 1320 Magnin, F., Krautblatter, M., Deline, P., Ravel, L., Malet, E., and Bevington, A.: Determination of warm, sensitive permafrost areas in near-vertical rockwalls and evaluation of distributed models by electrical resistivity tomography, *Journal of Geophysical Research: Earth Surface*, 120, 745-762, 2015b.
- Magnin, F., Josnin, J.-Y., Ravel, L., Pergaud, J., Pohl, B., and Deline, P.: Modelling rock wall permafrost degradation in the Mont Blanc massif from the LIA to the end of the 21st century, *The Cryosphere*, 11, 1813, 2017.
- 1325 Magnin, F., Etzelmüller, B., Westermann, S., Isaksen, K., Hilger, P., and Hermanns, R. L.: Permafrost distribution in steep rock slopes in Norway: measurements, statistical modelling and implications for geomorphological processes, *Earth Surface Dynamics*, 7, 1019-1040, 2019.
- Majala, G., Anda, E., Berg, H., Eikenæs, O., Helgås, G., Oppikofer, T., Hermanns, R., and Böhme, M.: Fare- og risikoklassifisering av ustabile fjellparti NVE, Oslo77-2016, 50, 2016.
- 1330 Mamot, P., Weber, S., Schröder, T., and Krautblatter, M.: A temperature- and stress-controlled failure criterion for ice-filled permafrost rock joints, *The Cryosphere*, 12, 3333-3353, 10.5194/tc-12-3333-2018, 2018.
- Mamot, P., Weber, S., Schröder, T., and Krautblatter, M.: A temperature- and stress-controlled failure criterion for ice-filled permafrost rock joints, *The Cryosphere*, 2019.
- 1335 Mamot, P., Weber, S., Eppinger, S., and Krautblatter, M.: Stability assessment of degrading permafrost rock slopes based on a coupled thermo-mechanical model, *Earth Surf. Dynam. Discuss.*, 2020, 1-45, 10.5194/esurf-2020-70, 2020.
- Marmy, A., Rajczak, J., Delaloye, R., Hilbich, C., Hoelzle, M., Kotlarski, S., Lambiel, C., Noetzi, J., Phillips, M., and Salzmann, N.: Semi-automated calibration method for modelling of mountain permafrost evolution in Switzerland, *The Cryosphere*, 10, 2693-2719, 2016.

- 1340 McGuire, A. D., Macdonald, R. W., Schuur, E. A. G., Harden, J. W., Kuhry, P., Hayes, D. J., Christensen, T. R., and Heimann, M.: The carbon budget of the northern cryosphere region, *Current Opinion in Environmental Sustainability*, 2, 231-236, 10.1016/j.cosust.2010.05.003, 2010.
- Mewes, B., Hilbich, C., Delaloye, R., and Hauck, C.: Resolution capacity of geophysical monitoring regarding permafrost degradation induced by hydrological processes, *The Cryosphere*, 11, 2957-2974, 2017.
- 1345 Mollaret, C., Hilbich, C., Pellet, C., Flores-Orozco, A., Delaloye, R., and Hauck, C.: Mountain permafrost degradation documented through a network of permanent electrical resistivity tomography sites, *The Cryosphere*, 13, 2557-2578, 10.5194/tc-13-2557-2019, 2019.
- Mollaret, C., Wagner, F. M., Hilbich, C., Scapozza, C., and Hauck, C.: Petrophysical joint inversion applied to alpine permafrost field sites to image subsurface ice, water, air and rock contents, *Frontiers in Earth Science*, 8, 85, 2020.
- 1350 Myhra, K. S.: Modelling Permafrost Conditions in Steep Mountain Environments, Faculty of Mathematics and Natural Sciences, University of Oslo, Doktorgradsavhandling, 159, 2016.
- Myhra, K. S., Westermann, S., and Etzelmüller, B.: Modelled Distribution and Temporal Evolution of Permafrost in Steep Rock Walls Along a Latitudinal Transect in Norway by CryoGrid 2D, *Permafrost and Periglacial Processes*, 28, 172-182, 10.1002/ppp.1884, 2017.
- 1355 Myhra, K. S., Westermann, S., and Etzelmüller, B.: Modelling conductive heat flow between steep rock walls and talus slopes—thermal processes and geomorphological implications, *Frontiers in Earth Science*, 7, 192, 2019.
- 1360 Obu, J., Westermann, S., Bartsch, A., Berdnikov, N., Christiansen, H. H., Dashtseren, A., Delaloye, R., Elberling, B., Etzelmüller, B., and Kholodov, A.: Northern Hemisphere permafrost map based on TTOP modelling for 2000–2016 at 1 km² scale, *Earth-Science Reviews*, 2019.
- Pellet, C., Hilbich, C., Marmy, A., and Hauck, C.: Soil moisture data for the validation of permafrost models using direct and indirect measurement approaches at three alpine sites, *Frontiers in Earth Science*, 3, 91, 2016.
- 1365 Phillips, M., Wolter, A., Lüthi, R., Amann, F., Kenner, R., and Bühler, Y.: Rock slope failure in a recently deglaciated permafrost rock wall at Piz Kesch (Eastern Swiss Alps), February 2014, *Earth Surface Processes and Landforms*, 42, 426-438, 2017.
- Ravanel, L., Allignol, F., Deline, P., Gruber, S., and Ravello, M.: Rock falls in the Mont Blanc Massif in 2007 and 2008, *Landslides*, 7, 493-501, DOI 10.1007/s10346-010-0206-z, 2010.
- 1370 Ravanel, L., Magnin, F., and Deline, P.: Impacts of the 2003 and 2015 summer heatwaves on permafrost-affected rock-walls in the Mont Blanc massif, *Sci Total Environ*, 609, 132-143, 2017.
- Riseborough, D., Shiklomanov, N., Etzelmüller, B., Gruber, S., and Marchenko, S.: Recent advances in permafrost modelling, *Permafrost and Periglacial Processes*, 19, 137-156, Doi 10.1002/Ppp.615, 2008.
- Saintot, A., Oppikofer, T., Derron, M.-H., and Henderson, I.: Large gravitational rock slope deformation in Romsdalen valley (Western Norway), *Revista de la Asociación Geológica Argentina*, 69, 354-371, 2012.
- 1375 Saloranta, T. M.: Simulating snow maps for Norway: description and statistical evaluation of the seNorge snow model, *The Cryosphere*, 6, 1323-1337, 10.5194/tc-6-1323-2012, 2012.
- Schuur, E. A., McGuire, A. D., Schädel, C., Grosse, G., Harden, J., Hayes, D. J., Hugelius, G., Koven, C. D., Kuhry, P., and Lawrence, D. M.: Climate change and the permafrost carbon feedback, *Nature*, 520, 171, 2015.

- 1380 Sen, P., Scala, C., and Cohen, M.: A self-similar model for sedimentary rocks with application to the dielectric constant of fused glass beads, *Geophysics*, 46, 781-795, 1981.
- Slagstad, T., Balling, N., Elvebakk, H., Midttømme, K., Olesen, O., Olsen, L., and Pascal, C.: Heat-flow measurements in Late Palaeoproterozoic to Permian geological provinces in south and central Norway and a new heat-flow map of Fennoscandia and the Norwegian–Greenland Sea, *Tectonophysics*, 473, 341-361, 10.1016/j.tecto.2009.03.007, 2009.
- 1385 Svennevig, K., Dahl-Jensen, T., Keiding, M., Merryman Boncori, J. P., Larsen, T. B., Salehi, S., Munck Solgaard, A., and Voss, P. H.: Evolution of events before and after the 17 June 2017 rock avalanche at Karrat Fjord, West Greenland – a multidisciplinary approach to detecting and locating unstable rock slopes in a remote Arctic area, *Earth Surf. Dynam.*, 8, 1021-1038, 10.5194/esurf-8-1021-2020, 2020.
- 1390 Timur, A.: Velocity of compressional waves in porous media at permafrost temperatures, *Geophysics*, 33, 584-595, 1968.
- Vick, L. M., Böhme, M., Rouyet, L., Bergh, S. G., Corner, G. D., and Lauknes, T. R.: Structurally controlled rock slope deformation in northern Norway, *Landslides*, 17, 1745-1776, 10.1007/s10346-020-01421-7, 2020.
- Voigtländer, A., Leith, K., and Krautblatter, M.: Subcritical crack growth and progressive failure in Carrara marble under wet and dry conditions, *Journal of Geophysical Research: Solid Earth*, 123, 3780-3798, 2018.
- 1395 Weber, S., Beutel, J., Faillettaz, J., Hasler, A., Krautblatter, M., and Vieli, A.: Quantifying irreversible movement in steep, fractured bedrock permafrost on Matterhorn (CH), *The Cryosphere*, 11, 567-583, 2017.
- Westermann, S., Schuler, T. V., Gisnas, K., and Etzelmüller, B.: Transient thermal modeling of permafrost conditions in Southern Norway, *Cryosphere*, 7, 719-739, DOI 10.5194/tc-7-719-2013, 2013.
- 1400 Wirz, V., Beutel, J., Gruber, S., Gubler, S., and Purves, R. S.: Estimating velocity from noisy GPS data for investigating the temporal variability of slope movements, *Nat Hazard Earth Sys*, 14, 2503-2520, 2014.

1405