

Hilltop curvature as a proxy for erosion rate: Wavelets enable rapid computation and reveal systematic underestimation

William T. Struble^{1,2}, Joshua J. Roering²

¹Department of Geosciences, University of Arizona, Tucson, Arizona 85721, USA

5 ²Department of Earth Sciences, University of Oregon, Eugene, Oregon, 97403, USA

Correspondence to: William T. Struble (wtstruble@arizona.edu)

Abstract. Estimation of erosion rate is an important component of landscape evolution studies, particularly in settings where transience or spatial variability in uplift or erosion generates diverse landform morphologies. While bedrock rivers are often used to constrain the timing and magnitude of changes in baselevel lowering, hilltop curvature (or convexity), C_{HT} , provides an additional opportunity to map variations in erosion rate given that average slope angle becomes insensitive to erosion rate owing to threshold slope processes. C_{HT} measurement techniques applied in prior studies (e.g. polynomial functions), however, tend to be computationally expensive when they rely on high resolution topographic data such as lidar, limiting the spatial extent of hillslope geomorphic studies to small study regions. Alternative techniques such as spectral tools like continuous wavelet transforms present an opportunity to rapidly document trends in hilltop convexity across expansive areas. Here, we demonstrate how continuous wavelet transforms (CWTs) can be used to calculate the Laplacian of elevation, which we utilize to estimate erosion rate in three catchments of the Oregon Coast Range that exhibit varying slope angle, slope length, and hilltop convexity, implying differential erosion. We observe that C_{HT} values calculated with the CWT are similar to those obtained from 2D polynomial functions. Consistent with recent studies, we find that erosion rates estimated with C_{HT} from both CWTs and 2D polynomial functions are consistent with erosion rates constrained with cosmogenic radionuclides from stream sediments. Importantly, our CWT approach calculates curvature at least 10^2 - 10^3 times more quickly than 2D polynomials. This efficiency advantage of the CWT increases with domain size. As such, continuous wavelet transforms provide a compelling approach to rapidly quantify regional variations in erosion rate as well as lithology, structure, and hillslope sediment transport processes, which are encoded in hillslope morphology. Finally, we test the accuracy of CWT and 2D polynomial techniques by constructing a series of synthetic hillslopes generated by a theoretical nonlinear transport model that exhibit a range of erosion rates and topographic noise characteristics. Notably, we find that

10
15
20
25

neither CWTs nor 2D polynomials reproduce the theoretically prescribed C_{HT} value for hillslopes experiencing moderate to fast erosion rates, even when no topographic noise is added. Rather, C_{HT} is systematically underestimated, producing a power law relationship between erosion rate and C_{HT} that can be attributed to ~~artifacts from~~ the increasing prominence of planar hillslopes that narrow the zone of hilltop convexity as erosion rate increases. As such, we recommend careful consideration of measurement length scale when applying C_{HT} to estimate erosion rate in moderate to fast-eroding landscapes, where curvature measurement techniques may be prone to systematic underestimation.

1 Introduction

The morphology of landscapes adjusts to conform to exogenic perturbations such as uplift and climate as well as spatial variations in lithology, geologic structure, and biology. As such, numerous studies have taken advantage of landscape morphology to estimate rates and timing of perturbations to these landscape properties. In bedrock rivers, for instance, geomorphic transport laws have been formulated to allow for linkages between landscape form and process, including from measurements such as channel steepness and χ , a metric that integrates drainage area along a channel profile (Kirby and Whipple, 2001; Perron and Royden, 2013; Royden and Perron, 2013). These tools have been effectively utilized to estimate and map spatial variations in uplift, quantify the timing and rates of landscape transience and uplift history, and predict drainage basin reorganization (e.g. Barnhart et al., 2020; Dietrich et al., 2003; Fox, 2019; Kirby and Whipple, 2001, 2012; Roberts and White, 2010; Willett et al., 2014; Wobus et al., 2006).

Similarly, hillslope geomorphic transport laws formulated for soil mantled landscapes allow for estimation of uplift and erosion rates as well as prediction of the migration of hillcrests in response to landscape transience (Forte and Whipple, 2018; Mohren et al., 2020; Mudd, 2017; Mudd and Furbish, 2007, 2005; Roering, 2008; Roering et al., 2007, 2001, 1999). Over 100 years ago, it was proposed that hillslope form, specifically slope and curvature, may be an effective predictor of erosion rate, as hillslopes steepen and lengthen to accommodate increases in baselevel lowering (Gilbert, 1909, 1877). However, hillslopes do not continue to steepen as baselevel lowering progressively increases to faster and faster rates (e.g. Howard, 1994; Penck, 1953; Schumm, 1967; Strahler, 1950). Rather, hillslope gradients approach a threshold value as erosion rate increases, such that gradient becomes invariant and insensitive to further increases in baselevel lowering (Andrews and Bucknam, 1987; Burbank et al., 1996; DiBiase et al., 2012; Larsen and Montgomery, 2012; Montgomery, 2001; Roering et al., 1999). In such cases, ~~a nonlinear formulation is implied such that~~ sediment flux varies nonlinearly with slope due to threshold-dependent processes such as landsliding as well as granular creep (BenDror and Goren, 2018; Deshpande et al., 2021; DiBiase et al., 2012; Ferdowsi et al., 2018; Gabet, 2000; Larsen and Montgomery, 2012; Montgomery, 2001; Ouimet et al., 2009; Roering et al., 2001).

55 Despite the insensitivity of hillslope gradient in rapidly eroding landscapes, soil mantled hillslopes remain an effective record of landscape transience and uplift. Specifically, hilltop curvature continues to respond to baselevel lowering when uplift and erosion rates are high, even as slope becomes insensitive to ever-increasing erosion rate (Hurst et al., 2012; Mohren et al., 2020; Roering et al., 2007). For a one-dimensional hillslope at steady state, erosion rate, E [L/T], can be estimated as

$$E = -\frac{\rho_s}{\rho_r} DC_{HT}, \quad (1)$$

60 where ρ_s and ρ_r are the density of soil and bedrock [M/L^3], respectively, D is the soil transport coefficient or diffusivity [L^2/T], and C_{HT} is curvature at the hilltop [$1/L$] (Roering et al., 2007). Using this formulation, Hurst et al. (2012) demonstrated in the Sierra Nevada, California, that C_{HT} records erosion rate in both low-relief, low-slope headwater catchments of the Feather River as well as in high-relief catchments that have already adjusted to a faster baselevel lowering rate where hillslopes approach a threshold angle. Similarly, Hurst et al. (2013) observed that hillslopes that are translating through an uplift gradient along the San Andreas Fault actively steepen and become sharper (C_{HT} becomes more negative) as they traverse the zone of high uplift and hillslope gradients become invariant. The hillslopes then decay, that is slopes become gentler and curvatures become less sharp, as they reenter the region of low background uplift (Hurst et al., 2013). Similarly, Clubb et al. (2020) observed that steep channels and sharp hilltops record uplift along the Mendocino Triple Junction in northern California, and they note that the lag in hillslope response time relative to the bedrock channels records the northward migration of the Mendocino Triple Junction.

70 Past studies that couple geomorphic transport laws and hilltop curvature have typically relied on curvature calculated from 2D polynomial functions fit to the topographic surface (PFTs (i.e. polynomials fit to topography); e.g. Roering et al., 1999). While a variety of polynomial forms and types of curvature (i.e. tangential, planform, Laplacian, etc.) have been utilized (e.g. Minár et al., 2020; Moore et al., 1991), Hurst et al. (2012) found that 6 term functions were sufficient for measuring curvature to estimate erosion rate. Specifically, Hurst et al. (2012) used least squared regression to fit a surface, z , to topography, such that,

$$z = ax^2 + by^2 + cxy + dx + ey + f, \quad (2)$$

where curvature, or more specifically the Laplacian of elevation, $\nabla^2 z$, is denoted as

$$\nabla^2 z = 2a + 2b. \quad (3)$$

80 To reduce the impact of topographic roughness due to stochastic sediment transport and surface perturbations such as boulders and tree throw pits as well as noise in the digital topographic data, they applied the PFT over a scale, λ (L in Hurst et al., (2012)), which defines the size of the square polynomial kernel that is fit to the surface. The value of λ [L] can be obtained by analysis of the scale dependency of roughness metrics (e.g. Hurst et al., 2012; Roering et al., 2010). As elaborated in the methodology proposed by Hurst et al. (2012), the PFT is not required to pass through any digital elevation model (DEM) nodes; hence, λ can be understood as a smoothing scale, thus measuring the background C_{HT} and removing topographic noise.

While the application of PFTs has proven useful for calculating curvature to estimate erosion rate and predict spatial and temporal variations in uplift (e.g. Clubb et al., 2020; Godard et al., 2020; Hurst et al., 2019, 2013, 2012; Mohren et al., 2020; Roering et al., 2007), PFTs are computationally cumbersome, hindering large-scale exploitation of high-resolution topographic datasets that have become increasingly available. Here, we demonstrate that 2D continuous wavelet transforms (CWTs) provide an alternative and computationally efficient approach to calculating hilltop curvature, operating at least 10^2 to $>10^3$ times faster than PFTs, with the relative efficiency advantage of CWTs increasing with the size of digital elevation models. We establish the similarity of the output CWT C_{HT} values to those produced by PFTs, and we compare estimated erosion rates calculated from C_{HT} values to erosion rates measured with cosmogenic radionuclides (CRN) in catchments in the Oregon Coast Range. In addition, we test the relative accuracy of the CWT and PFT approaches by applying them to synthetic hillslopes with known erosion rates generated by a nonlinear transport model and superimposed topographic noise. We find that both techniques systematically underestimate C_{HT} at moderate to high erosion rates and appear to approximate a square root relationship between C_{HT} and erosion rate as erosion rate increases, consistent with a recent study (Gabet et al., 2021).

2 Study Site: Oregon Coast Range

We selected the Oregon Coast Range (OCR) to compare CWTs and PFTs as hilltop curvature measurement techniques, as it is a region that has been extensively studied in the geomorphic literature, exhibits relatively uniform topography over intra-catchment scales while exhibiting diversity in hillslope form and erosion rate across the axis of the range, and has negligible spatial variability in climate. The OCR is an unglaciated humid landscape that parallels the Cascadia Subduction Zone and is characterized by cool, wet winters when the majority of the annual 1-2 m of precipitation falls, and warm dry summers (PRISM Climate Group, 2016). The dominant tree populations are composed of Douglas-fir (*Pseudotsuga menziesii*) and western hemlock (*Tsuga heterophylla*) that reside on hillslopes that are soil-mantled throughout the range. Soils are thickest in colluvial hollows and unchannelized valleys (~1-2 m), thinnest (~0.5 m) on planar hillslopes and hilltops, and are primarily produced stochastically through tree throw and bioturbation (Dietrich and Dunne, 1978). Colluvial hollows are periodically evacuated by shallow landslides that mobilize into debris flows (Benda and Dunne, 1997; Dietrich and Dunne, 1978; Penserini et al., 2017; Stock and Dietrich, 2003). Erosion rate, measured using techniques including CRNs, ^{14}C dating, and fluvial and colluvial sediment flux, usually cluster at approximately 0.1 mm yr^{-1} (Balco et al., 2013; Bierman et al., 2001; Heimsath et al., 2001; Penserini et al., 2017; Reneau and Dietrich, 1991), though these rates can temporally and spatially vary dramatically (Almond et al., 2007; Marshall et al., 2015; Sweeney et al., 2012). Average OCR erosion rates approximately correspond with uplift rates calculated from abandoned marine terraces, ranging from <0.05 to $>0.4 \text{ mm yr}^{-1}$ (Kelsey et al., 1996), as well as from fluvial strath terraces which range from 0.1 to 0.3 mm yr^{-1} (Personius, 1995), which has led to suggestions that the OCR may approximate steady state. Nonetheless, deviations from uniform erosion have been noted based on morphologic trends as well as soil properties (Almond et al., 2007; Sweeney, et al., 2012).

We pinpointed catchments in the OCR that exhibit a range of hilltop curvatures for analysis. Specifically, we focus on Hadsall Creek (43.983° N, -123.823° W), the North Fork Smith River (NFSR; 43.963° N, -123.811° W), and Bear Creek (44.181° N, -123.371° W). Hadsall Creek and the NFSR are catchments in the central OCR that share a drainage divide (Fig. 1A). Hadsall Creek is characterised by steep channels and hillslopes with evenly spaced ridges and valleys where incision is dominated by debris flows (Penserini et al., 2017; Fig. 2A). Contrastingly, the NFSR, which is erosionally isolated from baselevel by an Oligocene-age gabbroic dike that has pinned the fluvial channel, exhibits comparatively gentle channel and hillslope angles as well as longer soil residence times (Sweeney et al., 2012; Fig. 2B). CRN measurements have recorded catchment-averaged erosion rates at Hadsall Creek and the NFSR of $0.113 \pm 0.018 \text{ mm yr}^{-1}$ and $0.058 \pm 0.0054 \text{ mm yr}^{-1}$, respectively (recalculated from Penserini et al., 2017; Table 1). We also utilize hillslopes within three small sub-catchments that drain to Bear Creek (Fig. 1B), a tributary to the Long Tom River on the eastern margin of the OCR in the southwestern Willamette Valley (WV). Hillslopes within Bear Creek and the western margin of the WV exhibit gentle slopes, weathered soils with long residence times $>150 \text{ kyr}$ (Almond et al., 2007), and are bounded by broad alluviated valleys (Fig. 2C). We additionally report a newly collected CRN-derived catchment-averaged erosion rate for the northern Bear Creek subcatchment that we study here (Fig. 1B).

The spatial proximity of Bear Creek, Hadsall Creek, and the NFSR make them well-suited to compare C_{HT} measurement techniques, as other factors that may influence morphology, such as climate and lithology, remain relatively invariant. All three catchments are within the Tye Formation, a $\sim 3 \text{ km}$ thick sequence of gently dipping Eocene turbidite deposits characterized by a sequence of sandstone and siltstone interbeds (Baldwin, 1956; Heller and Dickinson, 1985; Lovell, 1969). While variability in sandstone-siltstone ratios in the Tye Formation result in latitudinal north-south variations in deep-seated landsliding (Roering et al., 2005), our three study sites are within sufficient proximity to each other such that lithologic variability in setting hillslope morphology should be limited. In addition, while common elsewhere in the OCR (Franczyk et al., 2019; LaHusen et al., 2020; Roering et al., 2005), the sites we have selected for analysis do not exhibit pronounced evidence of deep-seated landslides, which may bias C_{HT} values, complicating comparison to known erosion rates from CRN analysis. As such, Hadsall Creek, the NFSR, and Bear Creek provide an ideal spectrum of hillslopes that allows for assessment of C_{HT} measurement techniques (Figure Fig. 2).

3 Methods

3.1 Curvature calculation: polynomial fit and continuous wavelet transform

We used PFTs to calculate curvature of the Hadsall and Bear Creeks and NFSR lidar DEMs as enumerated in Equations 2 and 3. Each DEM has a grid spacing of 0.9144 m (3 ft). The lidar for Bear Creek was collected in 2009 (average point density: $8.14 \text{ pulses m}^{-2}$, ground density: $1.36 \text{ pulses m}^{-2}$), and the lidar at Hadsall Creek and NFSR was collected in 2014 (average point density: $10.41 \text{ pulses m}^{-2}$, ground density $0.54 \text{ pulses m}^{-2}$). (See Code and Data Availability for access information to lidar data). In order to identify and remove the topographic impact of stochastic sediment transport processes

such as tree throw, we calculated PFT curvature rasters using variable kernel sizes, corresponding to a range of smoothing scales, specifically for $\lambda=5-141$ m (the diameter of the polynomial kernel requires odd dimensions). These values of λ are informed by the requirements of the CWT, which we discuss below. For the PFT, λ is the diameter of the smoothing window.

In contrast to PFTs, CWTs are computationally efficient and can provide a variety of outputs depending on the analysis and type of wavelet used (e.g. Foufoula-Georgiou and Kumar, 1994 and references therein). Here, we applied a 2D CWT using the Ricker wavelet (often known as the Mexican Hat wavelet). The Ricker wavelet has been used in geomorphology to map and estimate landslide ages based on surface roughness (Booth et al., 2009; LaHusen et al., 2020), identify dominant landforms at particular wavelengths (Struble et al., 2021), extract channel heads and drainage networks (Lashermes et al., 2007; Passalacqua et al., 2010), and other topographic spectral analyses including mapping faults and predicting lithospheric thickness (e.g. Audet, 2014; Jordan and Schott, 2005; Malamud and Turcotte, 2001). In applying the Ricker wavelet, we take advantage of a useful property of convolutions that allows for simultaneous removal of topographic noise and calculation of derivatives. Specifically,

$$\frac{\partial}{\partial x}(f * h) = \frac{\partial f}{\partial x} * h = f * \frac{\partial h}{\partial x} \quad (4)$$

where f is some function (topography in our case) and h is a smoothing function (2D Gaussian for instance). Hence, for the case of calculating derivatives of topography, Equation 4 implies that applying a low-pass filter to topography and then taking the derivative (left term of Equation 4) is identical to taking the derivative of topography and smoothing the outputs (middle term), which is correspondingly equivalent to taking the derivative of the smoothing function and using that function to smooth topography (right term; Lashermes et al., 2007). The application of the Ricker wavelet to calculate land surface curvature is akin to the rightmost term in Equation 4, albeit by taking the second derivative of the smoothing function.

The Ricker wavelet is the negative second derivative of a 2D Gaussian function [1/L²], which is given as

$$g(x, y) = \frac{1}{2\pi s^2} \exp\left[-\frac{(u-x)^2 + (v-y)^2}{2s^2}\right], \quad (45)$$

where (u, v) and s [L] (σ in Lashermes et al., 2007) defines the location and size, specifically the standard deviation, of the Gaussian function, respectively (Derivative of a Gaussian (DoG) wavelets constitute a wavelet family). The Ricker wavelet, ψ [1/L⁴], as the negative, second derivative of Equation 45, then, is defined as

$$\psi(x, y) = \frac{1}{\pi s^4} \left(1 - \frac{1}{2} \left(\frac{(u-x)^2 + (v-y)^2}{s^2}\right)\right) \exp\left[-\frac{(u-x)^2 + (v-y)^2}{2s^2}\right]. \quad (56)$$

The output wavelet coefficients of the Ricker wavelet provide a measure of the Laplacian over the input scale of interest (Foufoula-Georgiou and Kumar, 1994; Lashermes et al., 2007). The generalized 2D CWT of topography, z , at location (u, v) , then is given as

$$C(s, u, v) = \frac{1}{s} \int_{-\infty}^{\infty} \int_{-\infty}^{\infty} z(x, y) \psi\left(\frac{x-u}{s}, \frac{y-v}{s}\right) dx dy, \quad (67)$$

Formatted: Indent: First line: 0.5"

Equation 67, notably, is a convolution of z and ψ , expressed as

$$C(s, u, v) = z(x, y) * \psi\left(\frac{x-u}{s}, \frac{y-v}{s}\right), \quad (78)$$

where $*$ represents the convolution. The output wavelet coefficients, C , of the Ricker wavelet from Equation 8 provide a measure of the low-pass filtered Laplacian over the input scale of interest (Foufoula-Georgiou and Kumar, 1994; Lashermes et al., 2007) that we use to estimate curvature of extracted hilltops (C_{HT}). A useful property of convolutions allows for simultaneous low pass filtering and measurement of curvature. Specifically,

$$\frac{\partial}{\partial x}(f * h) = \frac{\partial f}{\partial x} * h = f * \frac{\partial h}{\partial x} \quad (8)$$

where f is some function (topography in our case) and h is a smoothing function (the 2D Gaussian in Equation 4, for instance). Hence, for the case of calculating landscape curvature, Equation 8 implies that applying a low pass filter (Equation 4) to topography and then taking the derivative (i.e. calculating curvature; left term) is identical to taking the derivative of topography and smoothing the outputs (middle term) or taking the derivative of the function (i.e. Equation 5) and using that function to smooth topography (right term; Lashermes et al., 2007). Thus, the output scaled wavelet coefficients, C , from Equation 7 are the low pass filtered Laplacian values that we use for curvature of extracted hilltops (C_{HT}), which we elaborate on below.

Similar to the application of PFTs to estimate erosion rate, it is necessary to select a measurement scale that effectively smooths over stochastic sediment transport perturbations and noise that is inherent to topographic datasets and DEMs and does not represent long-term morphology reflective of baselevel lowering (Hurst et al., 2012; Roering et al., 2010). Thus, it is important to utilize an appropriately scaled wavelet, s , (akin to a kernel size), to generate curvature values that are appropriate to represent C_{HT} . Several definitions for the smoothing scale of a DoG wavelet exist. Torrence and Compo (1998) define the smoothing scale, λ [L], for an m^{th} DoG as

$$\lambda = \frac{2\pi s}{\sqrt{m + \frac{1}{2}}}. \quad (9)$$

For the Ricker wavelet, $m=2$. Under the Torrence and Compo (1998) definition, λ is determined by the scale, s , at which the wavelet power spectrum applied for a particular function with a known frequency (i.e. a cosine function) attains a maximum value. Alternatively, Lashermes et al. (2007) define the Ricker wavelet smoothing scale as the inverse of the wavelet's band-pass frequency, such that

$$\lambda = \sqrt{2\pi} s. \quad (10)$$

To clarify, while λ represents the physical scale at which topography is smoothed, s specifically defines the scale of the wavelet function and is only-related to the physical smoothing scale through Equations 9 and 10 and is not interchangeable with λ . While the Torrence and Compo (1998; TC98) and Lashermes et al. (2007; L07) λ definitions generate similar smoothing scales, the output Laplacian values may be sufficiently diverse to produce significantly different erosion rate estimates

depending on the choice. Thus, we utilize both definitions by selecting a range of λ and solving for s [using both Equations 9 and 10](#) in order to apply the CWT, which we then compare to the curvature values produced from the PFT.

210 We applied the CWT and PFT for λ values that correspond to the scales at which topographic noise manifests in topographic data. The CWT can only be applied for $s > 1$, which for DEMs with a grid spacing of ~ 1 m with the odd-dimensions constraint of the PFT, places a lower λ limit of 5 m. We additionally tested larger λ (up to 141 m) to isolate the consistency between the CWT and PFT. For each smoothing scale, λ , for which we calculated curvature, we solved for s in Equations 9 and 10 to construct the appropriately sized Ricker wavelet (Equation 56). We then applied the CWT to the OCR lidar DEMs
215 for smoothing scales of 5-141 m (same as PFT) and produced C_{HT} values for the CWT and PFT methods, denoted as C_{HT-W} and C_{HT-P} , respectively.

3.2 Computational efficiency of curvature values

We compared the efficiency of calculating curvature with a PFT to the CWT, including both definitions of wavelet
220 smoothing scale, λ (TC98 and L07; Equations 9, 10). We measured curvature for $\lambda=5-197$ m in MATLAB on a personal laptop with 16 GB of RAM (2.60 GHz CPU). To account for potential variations in calculation time that may result from variable landscape morphology, we utilized sample regions of the Hadsall Creek and Bear Creek DEMs, as they represent the high and low erosion rate end members of our test sites. Each DEM was a 513x513 single precision grid (32-bit float) with a cell size of 0.9144 m.

225 We also tested how DEM size affects the relative speed of the CWT and PFT algorithms. We selected a DEM of size 682x682 pixels from the Hadsall Creek catchment and measured curvature for $\lambda=5-101$ m. We then calculated curvature for the same λ on the northwest quadrant of the 682x682 pixel DEM, corresponding to a 341x341 pixel medium-sized grid. Finally, we calculated curvature for $\lambda=5-101$ m on the northwest quadrant of the medium-sized DEM, corresponding to a 171x171 pixel grid.

3.3 Hilltop extraction

We calculated curvature at every pixel of our DEMs, but C_{HT} requires limiting curvature values to hilltop pixels. Therefore, we extracted hilltop masks in MATLAB with ~~using~~ the DIVIDEobj function of TopoToolbox (Scherler and Schwanghart, 2014), restricting extracted first-order divides to those with lengths exceeding 800 m (Schwanghart and Scherler,
235 2020). We further refined the hilltop masks by only considering locations where C_{HT} is negative (convex) and where local hillslope gradient is less than 0.4, above which a greater proportion of hillslope sediment transport can be classified as nonlinear. We manually removed drainage divides mapped in low-relief valley bottoms and where flow routing is interrupted by roads, which are common in the OCR and introduce noisy high-magnitude curvatures. While the signature of deep-seated landslides is generally absent from our study catchments, if it appeared in the DEM that there has been a history of bedrock
240 slope instability, we filtered hilltops proximal to mapped landslides. We also did not consider hilltops that may exhibit prominent asymmetry due to disequilibrium with neighboring drainage basins. Thus, at Hadsall Creek and NFSR, we neglected

all hilltops at the main drainage divide (Fig. 1A). At the Bear Creek catchments, we similarly removed all hilltops at the main drainage divide (the northeast divide in Fig. 1B) except for those that border adjacent catchments that are likely experiencing the same baselevel imposed by Bear Creek (southwest divide in Fig. 1B). Finally, to visualize the scale-dependency of C_{HT} and reduce potential noise in C_{HT} measurements for full catchments obscuring curvature scaling breaks (Hurst et al., 2012; Roering et al., 2010), we selected a single representative hilltop in each catchment (Fig. 1, 2), chosen such that it approximates the average curvature for the catchment when compared to curvature measurements taken for all hilltops (Fig. 3). The selected representative hilltop ~~was spans~~ 234 m ~~long~~ at Hadsall Creek (average gradient 0.23), 149 m at NFSR (average gradient 0.14), and 274 m ~~long~~ at Bear Creek (average gradient 0.11).

3.4.1 Erosion rates estimated from hilltop curvature

We applied the CWT and PFT to the Hadsall Creek, NFSR, and Bear Creek lidar DEMs, and calculated curvature. We utilized the hilltop masks to extract curvature at the hilltops (C_{HT}). In the OCR, Roering et al. (2010) observed a scaling break in curvature at 15 m, corresponding to the length scale below which pit and mound topography dominate the surface morphology. We observe similar scaling breaks in hilltop curvature for selected hilltops at $\lambda \approx 15$ -20 m (Fig. 3), though we note that the clarity of this scaling break depends on the size of the study area and consistency, or lack thereof, of small pit and mound topography in a landscape. Thus, while the scaling break that distinguishes the effective scale at which topographic noise is filtered out may differ between the DEMs and catchments we analyse here, we find that the scaling breaks do not clearly or systematically differ from those observed by Hurst et al. (2012) and Roering et al. (2010; Fig. 3). Thus, we used a smoothing scale of $\lambda = 15$ m for the PFT and CWT in each OCR catchment to estimate erosion rate as enumerated in Equation 1. We assumed that $\frac{\rho_s}{\rho_r} = 0.5$ and $D = 0.003 \text{ m}^2 \text{ yr}^{-1}$, a hillslope diffusivity estimated for the OCR (Roering et al., 1999, 2007). We compared the mean and variance of these estimated erosion rates to CRN-derived erosion rates in each OCR study catchment.

3.4.2 Erosion rates from cosmogenic radionuclides

To test the efficacy of C_{HT} as a proxy for erosion rate, we compare erosion rates estimated from C_{HT} to those estimated from CRNs in stream sediments. We collected stream sediments from the western tributary to Bear Creek that we study here (Fig. 1B; 44.186 °N, -123.375° W) to estimate erosion rate with cosmogenic ^{10}Be (Balco et al., 2013; Heimsath et al., 2001). We used the online calculator CRONUS (Balco et al., 2008) to calculate erosion rate for the sample, which incorporates the material from the upstream drainage area and assumes steady erosion over the CRN integration timescale (Table 3, 4). We additionally recalculate the erosion rates for Hadsall Creek and NFSR from the CRN data previously reported by Penserini et al. (2017; Table 2, 3).

3.5 Construction of synthetic hillslopes to test C_{HT} measurements

275 We utilized synthetic hillslopes generated from a theoretical model to compare the accuracy of hilltop curvature
 280 calculated using the PFT and CWT as well as test how well these approaches can predict erosion rate. We used the functional
 form for a 1D hillslope experiencing nonlinear diffusion given as

$$z = \frac{DS_c^2}{2(\rho_r/\rho_s)E} \left[\ln \left(\frac{1}{2} \left(\sqrt{1 + \left(\frac{2(\rho_r/\rho_s)Ex}{DS_c} \right)^2} + 1 \right) \right) - \sqrt{1 + \left(\frac{2(\rho_r/\rho_s)Ex}{DS_c} \right)^2} + 1 \right], \quad (11)$$

where E is the erosion rate calculated using Equation 1 [L/T], S_c is the threshold, or critical, slope angle, and x is distance
 285 along the hillslope profile (Roering et al., 2007). We extended the hillslope profile solution perpendicular to the x-axis to
 construct a 2D synthetic hillslope on a 201x201 m grid (Fig. 8, 9, S2). Odd hillslope dimensions ensure the existence of a
 hilltop pixel in the middle of the domain. We utilized the PFT and CWT, including both CWT definitions for the wavelet scale
 λ (Equations 9, 10; TC98, L07), to calculate C_{HT-W} and C_{HT-P} of the synthetic hillslopes for several different scenarios.
 Specifically, we considered various dimensionless erosion rates, E*, given by:

$$285 \quad E^* = \frac{2E(\rho_r/\rho_s)L_H}{DS_c} = \frac{2C_{HT}L_H}{S_c}, \quad (12)$$

where L_H is hillslope length (Roering et al., 2007). In testing the ability of the CWT and PFT to predict hilltop curvature, we
 generate hillslopes with a range of E* values that can account for variations in E, C_{HT}, L_H, and S_c. For instance, low (high) E*
 values may correspond to low (high) E, C_{HT}, or L_H as well as high (low) S_c, or some combination thereof. We specifically
 tested E* values of 1, 10, 30, and 100. While E*=100 is an extreme case and may only be rarely observed in natural landscapes
 290 that are eroding rapidly and also manage to maintain a soil mantle, such as badlands, E* values of 1, 10, and 30 have been
 readily observed in multiple landscapes. [For instance, Hurst et al. \(2012\) observed E* values in the Sierra Nevada, California,
 as high 30, but most measured hillslopes exhibited E*<10. Hurst et al. \(2013\) similarly observed at the Dragon's Back along
 the San Andreas Fault that E* ranges from 5 to 30, reflecting a strong uplift gradient. E* along coastal California has been
 noted as <-10 along the Mendocino Triple Junction \(Clubb et al., 2020\), <-8 further south along the Bolinas Ridge \(Hurst et
 295 al., 2019\), and ranging from 1-2 at Gabilan Mesa \(Roering et al., 2007\). Finally, in the OCR, past studies have observed that
 E*~10 \(Marshall and Roering, 2014; Roering et al., 2007\), \(Clubb et al., 2020; Hurst et al., 2019, 2013; Marshall and Roering,
 2014; Roering et al., 2007\).](#)

In addition, to account for natural topographic roughness that the CWT and PFT smooth over to estimate C_{HT}, we
 introduce noise to the synthetic hillslopes in the form of white (β=0), pink (β=-1), and red, or Brownian, (β=-2) noise, where
 300 β is spectral slope. White noise denotes a random surface where all wavenumbers (frequencies) have equal amplitude, or
 spectral power. Conversely, spectral power density varies inversely (β=-1) with wavenumber for pink noise, such that low
 wavenumbers have higher intensity. Similarly, red noise exhibits higher spectral power at low wavenumbers, but more
 dramatically than for pink noise. While hillslope spectra will vary between landscapes and likely exhibit a combination of
 different spectral slopes depending on the scale of analysis, red noise surfaces generally best describe topographic noise in

305 natural landscapes while white noise surfaces are comparatively the least likely (e.g. Booth et al., 2009; García-Serrana et al.,
2018; Marshall and Roering, 2014; Pelletier and Field, 2016; Perron et al., 2008). We generated each noisy surface of values
normally distributed about 0 with the standard deviation ranging from -1 m (pits) to 1 m (mounds; Konowalczyk, 2021). For
each type of noise, we tested how the amplitude of the noise affects calculated C_{HT} by scaling the noise distributions (± 1 m)
by 0.1%, 0.5%, and 5% of hillslope length ($L_H=100$ m). In other words, we test cases where the standard deviation of the noise,
310 σ , is $\sigma=0.001L_H$, $\sigma=0.005L_H$, and $\sigma=0.05L_H$, corresponding to 1σ values of 10 cm, 50 cm, and 5 m, respectively. While
topographic noise with a distribution of amplitudes with a standard deviation of 5 m is likely unphysical for soil mantled
landscapes, this extreme case allows us to clearly test how different topographic parameters affect calculated values of E^* and
how well each measurement technique can filter out noise.

315

4 Results

4.1 Computational efficiency of CWT and PFT curvature calculation

We find that the CWT is dramatically more efficient at calculating hilltop curvature than the PFT. Curvature
320 calculation time depends on smoothing scale, λ , with large kernel sizes taking longest for both the PFT and CWT. Specifically,
we compared curvature calculation times for the PFT and CWT in selected portions of the Hadsall Creek and Bear Creek
catchments for $\lambda=5-197$ m. We find that for the 513x513 single precision grid, the PFT takes ~4-4.5 seconds to calculate
curvature at the smallest scales and ~30 seconds to calculate curvature at larger scales. Measurement time does not vary greatly
between the fast and slowly eroding landscape DEMs. By comparison, for $\lambda=5-~~197~~200$ m, both the CWT L07 and TC98
325 definitions for λ calculate curvature at the smallest scales in ~0.0039-0.004 seconds while at larger scales they calculate
curvature in ~2.2-2.3 seconds. Comparing the two techniques, we find that at the smallest smoothing scales ($\lambda=5$ m) the CWT
operates $>10^3$ times faster than the PFT, while at larger scales where λ approaches 200 m, the CWT still outpaces the PFT by
over an order of magnitude (Fig. 4A, B).

In addition to the CWT outpacing the PFT at a large range of λ in two landscapes exhibiting contrasting morphology,
330 we observe that the relative speed of the CWT to the PFT increases with DEM size. Specifically, we find that for the smallest
DEM for which we calculated curvature (171x171 grid), the CWT is ~500 times faster than the PFT when $\lambda=5$ m and is ~10
times faster than the PFT when $\lambda=101$ m (Fig. 4C). As DEM size increases, the computational advantage of the CWT increases,
such that for the large DEM (682x692 grid), the CWT operates $>10^3$ times faster than the PFT when $\lambda=5$ m and ~30 times
faster when $\lambda=101$ m (Fig. 4C).

335

4.2 Similarity of C_{HT-P} and C_{HT-W}

We utilized 2D CWTs and PFTs to calculate C_{HT-W} and C_{HT-P} for a range of λ in the OCR catchments of Hadsall
Creek, NFSR, and Bear Creek. We find that C_{HT-W} and C_{HT-P} are similar when using λ values of 5-30 m. Specifically, Fig. 3

340 compares output C_{HT-W} using both λ length scale definitions (Equations 9, 10) and C_{HT-P} for the representative hilltop in each catchment. Mean measured C_{HT-W} and C_{HT-P} values differ the most at small smoothing scales, where signal to noise ratio (topographic noise to underlying C_{HT}) is highest (Fig. 3A, D, G). At these small smoothing scales, the standard deviation of C_{HT-P} is larger than that of C_{HT-W} (Fig. 3B, E, H). Mean C_{HT-W} for both L07 and TC98 λ definitions are similar, as are the output standard deviations (Fig. 3). However, we observe that mean C_{HT-W} calculated using the TC98 definition of λ is lower in magnitude than that of L07 (Fig. 3; Table 1). This is not unexpected, however, since λ , as defined by TC98 in Equation 9, is effectively smaller than that of L07 defined in Equation 10, for a given wavelet scale, s . Figure 4 compares the output C_{HT} measurements from each technique by plotting C_{HT} for individual DEM nodes for $\lambda=15$ m. If measurements from each technique are in agreement, their output C_{HT} values should plot as a 1:1 line. Indeed, C_{HT-W} for TC98 λ is lower than that of L07 for both the representative hilltop and all mapped hilltops, with the largest deviation occurring on the sharpest hilltops (Fig. 5C, F, I). Similarly, mean C_{HT-W} (TC98 and L07) is lower than C_{HT-P} , particularly for high magnitude curvatures. 350 Nevertheless, the output values from each definition do not vary dramatically, particularly when considering the C_{HT} for DEM nodes corresponding to representative hilltops (Fig. 5).

We additionally plot probability density functions (PDF) of measured C_{HT-W} and C_{HT-P} for each catchment (Fig. 6, S1). Notably, the shape of each PDF is similar between measurement techniques but is shifted along the x-axis due to the variable definitions of λ . This shift is further illustration of the deviation from a 1:1 relationship between each measurement technique as observed in Fig. 5. Similar to the greater deviation between calculated C_{HT} at curvature extrema in Fig. 5, we observe greater offset between PDFs in the distribution tails, while the peaks remain similar. We observe this consistency between PDF peaks reflected in the mean C_{HT} of the PDFs, which are similar regardless of measurement technique (Fig. 6; Table 1, 2).

4.3 Erosion rate calculated with C_{HT} and cosmogenic radionuclides

360 We utilized C_{HT} for $\lambda=15$ m to estimate erosion rate. Erosion rates calculated from C_{HT-P} and C_{HT-W} for all mapped hilltops and the representative hilltop in each catchment can be found in Table 2. We observe that C_{HT-P} and C_{HT-W} produce expected relative pattern of erosion rate in our OCR catchments. That is, calculated erosion rate from C_{HT} is fastest at Hadsall Creek and slowest at Bear Creek, as revealed by our cosmogenic erosion rate data (Fig. 6, Table 2). Notably, we observe that C_{HT} -generated erosion rates (mean \pm standard deviation) fall within or near the measurement uncertainty of the CRN erosion rate for both the representative hilltop and all hilltops (Table 2). For instance, CRN-measured erosion rates are 0.113 ± 0.018 mm yr⁻¹ at Hadsall Creek, 0.058 ± 0.0054 mm yr⁻¹ for the NFSR, and 0.008 ± 0.0007 mm yr⁻¹ at Bear Creek (Table 3, 4). Similarly, for the case of the representative hilltop and using the TC98 λ definition, we find C_{HT} -calculated erosion rates of 0.178 ± 0.030 mm yr⁻¹ at Hadsall Creek, 0.088 ± 0.025 mm yr⁻¹ for the NFSR, and 0.007 ± 0.005 mm yr⁻¹ at Bear Creek. The rates calculated with the PFT and L07 λ definition are similar, whether considering the representative hilltop or all mapped hilltops in each catchment (Table 2; Fig. 6, 7, S1). Finally, we observe linear correlation between C_{HT} -calculated and CRN-measured erosion rates at our OCR catchments ($E=0.88C_{HT}+0.002$), consistent with the relationship between C_{HT} and E expected in

Formatted: Font: Italic

Equation 1 (Fig. 7). Furthermore, the diffusivity we infer from the slope of this relationship is $0.002 \pm 0.0004 \text{ m}^2 \text{ yr}^{-1}$ (taking into account $\frac{\rho_s}{\rho_r} = 0.5$), a value consistent with diffusivities measured elsewhere in the OCR (Roering et al., 1999).

375 4.4 Testing of C_{HT} extraction with synthetic hillslopes

We calculated C_{HT-P} and C_{HT-W} for a series of synthetic hillslopes with a range of dimensionless erosion rates, E^* , and topographic noise (Fig. 8, 9). We observe that the ability of the CWT and PFT to reproduce the defined curvature at particular λ depends on the dimensionless erosion rate, E^* , though the type and magnitude of added noise contributes to uncertainty in appropriate λ values to be used to calculate erosion rate. We focus on synthetic hillslopes where no noise has been added (i.e. $\sigma=0 \text{ cm}$) as well as where noise amplitude $\sigma=0.5\% L_H$, as the magnitude of noise in this case ($\sigma=50 \text{ cm}$) is a reasonable physical approximation of noise and surface roughness in natural landscapes (e.g. Marshall and Roering, 2014; Pelletier and Field, 2016; Roth et al., 2020). The cases where noise amplitude is defined by $\sigma=0.1\% L_H$ ($\sigma=10 \text{ cm}$) and $\sigma=5\% L_H$ ($\sigma=5 \text{ m}$) can be found in the Supplemental Information (Fig. S5-S10).

385 4.4.1 Slowly eroding synthetic hillslopes, $E^*=1$

We observe that for $E^*=1$, both the PFT and CWT reasonably predict the model-defined C_{HT} (and thus E) at moderate smoothing scales. Specifically, when $\sigma=0.5\% L_H$, C_{HT-W} and C_{HT-P} converge on the defined C_{HT} when $\lambda > \sim 9\text{-}11 \text{ m}$ for white noise, $\lambda > \sim 15\text{-}19 \text{ m}$ for pink noise, and $\lambda > \sim 13 \text{ m}$ for red noise (Fig. 10B-D). At smaller λ , the signal to noise ratio is too high for noise to be adequately filtered by either the PFT or CWT. This mirrors past results in natural landscapes, where a sufficiently large smoothing scale must be selected to smooth over topographic noise and recover an accurate C_{HT} (Hurst et al., 2012; Roering et al., 2007). Notably, when $E^*=1$, the hillslopes are not sufficiently steep to approach Sc (Fig. 8, 9). Thus, even at the largest smoothing scales, the CWT and PFT accurately record curvature (Fig. 10A-D). In natural landscapes, however, valley bottoms will introduce positive curvatures, which will cause an increase in curvature (i.e. become less negative), at smoothing scales that approach the hillslope length, which has also been utilized to constrain an optimal smoothing scale (Hurst et al., 2012), and which we observe in OCR catchments (Fig. 3A, D, G).

We observe that the uncertainty in C_{HT} , which we define as the standard deviation of C_{HT} along the hilltop, is highest at the smallest smoothing scales (Fig. S3, S4). Notably, we observe for all noise types that at small smoothing scales of $\lambda=5\text{-}13 \text{ m}$, C_{HT-P} exhibits higher uncertainty than C_{HT-W} . As λ increases, the uncertainty in C_{HT-P} and C_{HT-W} diminishes as topographic noise is progressively filtered. Because red noise includes higher spectral power at long wavelengths, we observe that the decrease in C_{HT} uncertainty occurs at larger smoothing scales, converging towards 0 at scales of $>17 \text{ m}$ (Fig. S4).

We find that when no noise is added to the synthetic hillslopes, C_{HT-P} and C_{HT-W} accurately predict C_{HT} at all scales (Fig. 10A). While there is some deviation between measured and defined C_{HT} at larger scales, this deviation is exceptionally small ($<0.5\%$) and is primarily a result of edge effects that may not be fully clipped for both the CWT and PFT at the edge of the synthetic hillslope domain. Uncertainty in C_{HT-W} and C_{HT-P} is near 0 when no surface noise is added, with deviations again

405 primarily due to the presence of edge effects that are not fully clipped off at the hillslope tips (Fig. S4). Finally, we observe that for a given style and amplitude of added topographic noise, the uncertainty in C_{HT} does not vary with changes in E^* (Fig. S4). We do not vary topographic noise as a function of E^* , so equal uncertainty over a range of E^* values indicates that variable hillslope form as defined by E^* does not affect the uncertainty in C_{HT} along the hilltop. Given the convolutional form of the CWT in Equation 7-8 and the distributive property of convolutions, given as

410
$$f * (h + k) = (f * h) + (f * k), \quad (13)$$

where f is the wavelet, h is the synthetic hillslope, and k is surface noise, the standard deviation of C_{HT} remaining constant as a function of E^* is not unexpected.

4.4.2 Moderate to fast eroding synthetic hillslopes, $E^* \geq 10$

415 We observe that both the CWT and PFT produce biased C_{HT} as E^* increases. The deviation between the model-defined and measured C_{HT} progressively grows for larger E^* . Specifically, for the case of $\lambda=15$ m, when $E^*=10$, we find that C_{HT-W} and C_{HT-P} are within ~10% of the defined C_{HT} , with modest dependencies on the type of topographic noise (Fig. 10F, G, H). However, C_{HT-P} and C_{HT-W} are underestimated by >20% for $E^*=30$ hillslopes and by 60% for $E^*=100$ slopes when $\lambda=15$ m. This deviation occurs for hillslopes constructed with topographic noise of all types as well as the synthetic hillslopes without
420 added noise (Fig. 10I-L). Even for small λ , we observe that C_{HT} is systematically underestimated. For the case of $E^*=30$, we observe that C_{HT-W} and C_{HT-P} deviate by 10-25% for $\lambda < 15$ m, with the smallest λ (~5-7 m) exhibiting the least deviation, with C_{HT-P} and C_{HT-W} falling within ~10% of the known C_{HT} . C_{HT} is reasonably recovered at $\lambda=5$ m for the red noise $E^*=30$ hillslope, despite the noise dominating C_{HT-W} and C_{HT-P} when $\lambda=5$ m for the $E^*=1, 10$ hillslopes. Given the added noise is constant between E^* values, this accurate recovery of C_{HT} for $E^*=30$ when $\lambda=5$ m may indicate that planar hillslopes introduce curvature
425 values sufficiently near-zero to cancel out the positive (concave) noise. For $\lambda > 15$ m, we observe that C_{HT} is underestimated by at least 25% for all $E^*=30$ hillslopes and >60% for $E^*=100$ hillslopes. As λ increases, this deviation systematically grows such that when $\lambda=35$, C_{HT} is underestimated by half for $E^*=30$ hillslopes and ~80% for exceptionally narrow hillslopes where $E^*=100$ (Fig. 10I-P). Importantly, we observe these major deviations for the hillslopes with no added noise as well, indicating that topographic noise is not solely responsible for biased C_{HT} .

430

5 Discussion

Application of CWTs and PFTs to measure C_{HT} and estimate erosion rate in soil mantled landscapes such as the OCR produces erosion rate values that are in agreement with those collected from CRNs in stream sediments, though with dramatically disparate efficiencies. Yet, we also observe that while both techniques accurately reproduce hillslope morphology
435 in synthetic landscapes experiencing modest dimensionless erosion rates, both techniques exhibit systematic bias where dimensionless erosion rate is moderate to high, calling into question the accuracy of past estimates of erosion rate in landscapes that are experiencing moderate to rapid erosion rates. Nevertheless, CWTs are an exciting tool to be added to hillslope

geomorphometric analyses, particularly as high-resolution topographic datasets continue to grow and classification of topographic roughness, particularly on the hillslope scale, continues to improve.

440

5.1 C_{HT} measurement and erosion rate estimation in natural landscapes: Oregon Coast Range

We utilized CWTs and PFTs to estimate erosion rate in a landscape that has been thoroughly studied in past geomorphology studies. Encouragingly, C_{HT} -calculated erosion rate in Hadsall Creek, NFSR, and Bear Creek reproduce CRN-measured erosion rates from each site. We also observe, however, that some variability in measured C_{HT} reinforces the need to use caution when selecting hilltops at which curvature will be extracted, especially in landscapes where topographic noise, including from anthropogenic sources such as roads, as well as landslides and variable lithology, may introduce inaccurate measurements of curvature. Indeed, despite careful selection of hilltops, calculated C_{HT} exhibit a wide range of values (Fig. 5, 6, S1). Fortunately, the catchments we have sampled here exhibit few to no deep-seated landslides and are mapped entirely within the Tye Formation, which exhibits little variability over small spatial scales. Also, while there are numerous forest and logging roads throughout the OCR, they are easily identifiable in lidar data and are limited to a small portion of hilltops. Hence, while haphazard selection of hilltops without a predefined methodology for trimming hilltops should be avoided, our observed agreement between estimated erosion rates for all selected hilltops in a catchment and representative hilltops emphasizes that mild to moderate trimming of hilltop masks is sufficient for estimating an accurate erosion rate (Table 2, Fig. 6, S2). Finally, agreement between TC98 and L07 λ definitions and CRN erosion rates suggests that either definition is reasonable for calculating C_{HT} . However, careful and informed selection of λ when calculating erosion rate remains paramount.

445

450

455

5.2 Rapid calculation of C_{HT}

We have demonstrated that CWTs calculate $C_{HT} > 10^3$ times faster than PFTs at smoothing scales of $\lambda = 5$ m (for a 513x513 single precision grid). At smoothing scales often utilized to estimate C_{HT} (~10-30 m), the CWT operates $> 10^2$ times faster (Fig. 4). Even at the largest smoothing scales we test (up to 197 m), the CWT operates ~14-15 times faster than the PFT. Importantly, the computational advantage of the CWT increases with DEM size (Fig. 4C), such that the $\sim 10^3$ computation time advantage that we observe should be considered a minimum, as most landscape analyses utilize DEMs larger than the grids we test here. While PFT computation times can often be substantially reduced by limiting curvature calculation to the hilltops, this dramatic difference in curvature calculation time opens many doors for utilizing hilltop curvature in topographic analyses of landscapes that require consideration of large spatial scales. What's more, the ability of the CWT to operate so efficiently on high-resolution lidar data does not necessitate that coarse data be used to analyse large regions, as has generally been the case for past geomorphic analyses of regional and continental-scale bedrock rivers. Rather, the ability of the CWT to calculate hilltop curvature over large spatial scales with such speed means that the limiting factor for large landscape analyses where lidar data is available is not the operating time of the measurement technique, but rather the ability of existing systems to store vast quantities of high-resolution topographic data and curvature-related products! In addition to C_{HT} measurement, the rapidity

460

465

470 of the CWT will allow for large-scale analyses of other types of curvature and landscape characteristics well-suited to spectral
analyses including mapping landslides (Booth et al., 2009; LaHusen et al., 2020), quantifying surface roughness (Doane et al.,
2019; Roth et al., 2020), and mapping landforms (Black et al., 2017; Clubb et al., 2014; Passalacqua et al., 2010; Perron et al.,
2008; Struble et al., 2021).

475 5.3 C_{HT} underestimated in moderate to fast-eroding landscapes

We find that both the CWT and PFT are unable to reproduce accurate C_{HT} at moderate to fast dimensionless erosion
rates. Disagreement between measured and defined C_{HT} for a given E^* can be conceptualized primarily as a biasing of curvature
measurement as hilltops progressively narrow and steepen in response to faster erosion rates. Specifically, since we utilize a
nonlinear diffusion framework to construct the synthetic hillslopes (Equation 11), planar side slopes begin to develop and
480 advance towards the hilltop as the hillslope gradient approaches the critical slope angle, S_c , at moderate to fast E^* . The
formation of planar hillslopes means, by definition, that curvature does not accurately reflect C_{HT} along the entire hillslope
length, as would be the case for a slowly eroding broad hillslope with constant curvature (i.e. linear diffusion). The $E^*=1$
synthetic hillslope, while also constructed with Equation 11, can be approximated as experiencing linear diffusion, as slopes
are not sufficiently steep to approach S_c and develop planarity. In this case, even as λ increases, C_{HT-W} and C_{HT-P} accurately
485 recover the actual C_{HT} . We observe that at these slow erosion rates ($E^*=1-10$), the main obstacle to recovering an accurate C_{HT}
is topographic noise (Fig. 10A-H). As we have applied here, and has been previously demonstrated (Hurst et al., 2012; Roering
et al., 2007), careful selection of a λ sufficiently large to remove such noise, but not so large such that concave valley bottoms
introduce positive curvatures, still allows for accurate calculation of C_{HT} , particularly for $E^*=1$. By contrast, in cases where
 E^* is sufficiently high to develop planar side slopes, once λ reaches a sufficiently high value to remove topographic noise, the
490 CWT and PFT kernels have become sufficiently large to incorporate planar slopes into the curvature measurements, thus
underpredicting the actual value of C_{HT} . In these cases, topographic noise is a secondary impediment to accurate C_{HT}
measurement, preventing utilization of a sufficiently small λ that avoids planar hillslopes. Furthermore, if E^* is sufficiently
large, planar side slopes may appear close enough to the hilltop to disqualify almost any smoothing scale, which is clear from
our synthetic hillslopes with no added noise (Fig. 10E, I, M). Importantly, even ~~at modest~~for $E^*=10$, planar slopes begin to
495 bias C_{HT} (Fig. 10E).

The grid resolution of digital topographic data has been recognized to affect measurements of topographic curvature
and hillslope sediment flux (e.g. Ganti et al., 2012; Grieve et al., 2016b). However, the deviation between known and measured
 C_{HT} we note here is intrinsic to the form of hillslopes that are described by the nonlinear diffusion model. As E^* increases and
the hilltop undergoes a concomitant increase in C_{HT} , a smaller λ is ideally required to avoid the planer side slopes and accurately
500 calculate C_{HT} . Unfortunately, however, λ can only be decreased so much before topographic noise and stochastic and
disturbance-driven processes begin to overwhelm the calculated curvature values (Hurst et al., 2012, 2013; Roering et al.,
2007; Fig. 3, 10). As such, increasing the resolution of topographic data, while desirable for characterizing hillslope sediment
transport processes, will not by itself alleviate the systematic deviation between measured and model-specified C_{HT} , as such

high-resolution data will also be recording the stochastic signals that deviate from the underlying hillslope form (Roth et al., 2020). However, improved characterization of the distribution of roughness and microtopography in landscapes and how they may vary with erosion rate may provide a remedy for estimating erosion rate from topography and defining a better-informed λ , particularly in landscapes where hilltops are conspicuously sharp and where topographic resolution continues to improve.

Importantly, we stress that neither CWTs nor PFTs are, at this time, capable of accurately estimating hilltop curvature at moderate to high E^* , even when λ is small (Fig. 10). We observe that the CWT and PFT systematically underpredict E^*C_{HT} when $E^*=100$ (Fig. 10M-P). However, we acknowledge that E^* values of 100 are perhaps unreasonably high for most natural landscapes, with perhaps a few notable exceptions (e.g. Taiwan, Himalaya, New Zealand). More so, soil production limits (e.g. DiBiase et al., 2012; Heimsath et al., 1997; Montgomery, 2007; Neely et al., 2019) imply that these settings may exhibit processes that are not well represented with the soil creep model employed here. Regardless, the CWT and PFT clearly underpredict C_{HT} when $E^*=30$ and exhibit underpredicted C_{HT} when $E^*=10$, *even in the most ideal case when synthetic hillslopes have no added noise*. Similar values of E^* have been recorded in numerous natural landscapes (Clubb et al., 2020; Grieve et al., 2016a; Hurst et al., 2019, 2013, 2012; Marshall and Roering, 2014; Roering et al., 2007). Finally, the addition of topographic noise to our hillslopes serves to increase uncertainty in measurement of C_{HT} (Fig. 10, S4, S7, S10) but does not result in systematic over- or underestimation.

5.4 Does hilltop curvature vary linearly with erosion rate?

The systematic underestimation of C_{HT} that we observe here has important implications for interpreting erosion rates and hillslope surface processes in natural soil-mantled landscapes that are not eroding slowly. Specifically, our results here urge caution when applying hilltop curvature measurement techniques to natural soil mantled landscapes eroding at moderate to rapid rates and where hilltops are correspondingly sharp. While C_{HT} has been found to generally agree with independently calculated erosion rates following Equation 1, the measurement artifact we have observed here calls into question the accuracy of calculated erosion rates from C_{HT} in natural landscapes in past studies. Recent observations put forward by Gabet et al. (2021), show that hilltop curvature varies with the square root of erosion rate, which implies a square root relationship between hillslope diffusivity, D , and erosion rate, representing a deviation from the long-held view that C_{HT} varies linearly with erosion rate (Equation 1). Here we use a synthetic hillslope simulation to explore whether these findings may be influenced by a systematic bias in the estimation of C_{HT} due to the formation of planar side slopes proximal to hilltops as described above (Fig. 10). Specifically, we followed the methodology laid out by Gabet et al. (2021) and reproduced a C_{HT} - E relationship from synthetic hillslopes with *no added noise*. While Gabet et al. (2021) constructed synthetic hillslope profiles to account for the effect of grid spacing on calculated C_{HT} , we additionally consider the role of smoothing scale, λ , on estimation of C_{HT} . In order to facilitate comparison, we initially selected $\lambda=14$ m, the same scale that Gabet et al. (2021) applied at each of their field sites, to calculate C_{HT} . We constructed a series of synthetic hillslopes described by Equation 11 for $E^*=1-100$, which corresponds to erosion rates of $\sim 0.01-1$ mm yr⁻¹ (for $D=0.003$ m² yr⁻¹). ~~(To constrain how hillslope diffusivity modulates the erosion rate at which C_{HT} is underestimated, we also tested a range of diffusivities, spanning assuming $D=0.0013-0.005$ m² yr⁻¹ (assuming and~~

$\frac{\rho_s}{\rho_r}=0.5$). We used the CWT to calculate curvature; a PFT could be used as well, which would be consistent with the Gabet et al. (2021) methodology. However, as we have demonstrated, C_{HT-P} and C_{HT-W} are similar for both natural hillslopes and synthetic hillslopes with no added noise (Fig. 3, 10).

We observe that erosion rate and C_{HT} do not vary linearly as expected from Equation 1 for all erosion rates (Fig. 11). While the relationship between erosion rate and measured hilltop curvature (we plot the absolute value, $|C_{HT}|$, to allow visualization of positive values) is linear as expected from Equation 1 for slow erosion rates of 0.01-0.08 mm yr⁻¹ (for the case of $D=0.003 \text{ m}^2 \text{ yr}^{-1}$), the measured and actual synthetic values of $|C_{HT}|$ begin to clearly diverge for erosion rates $>0.08 \text{ mm yr}^{-1}$ (Fig. 11A), though some deviation exists at erosion rates as low as $\sim 0.03 \text{ mm yr}^{-1}$ (Fig. 11B; blue squares). This deviation occurs at even slower erosion rates for $D=0.001 \text{ m}^2 \text{ yr}^{-1}$, specifically at erosion rates of $\sim 0.02\text{-}0.03 \text{ mm yr}^{-1}$ (Fig. 11A). As this deviation increases with erosion rate (and E^*), it approximates a square root relationship between erosion rate and hilltop curvature. Importantly, the erosion rate at which this deviation occurs is heavily dependent on smoothing scale and diffusivity. We tested aFor the range of tested diffusivities ($D=0.001\text{-}0.005 \text{ m}^2 \text{ yr}^{-1}$) and for $\lambda=14 \text{ m}$ and $\lambda=20 \text{ m}$, we and plotted the ratio of measured C_{HT} to the actual C_{HT} (Fig. 11B). We find that for smaller D , the deviation between measured and model-defined C_{HT} occurs at slower erosion rates, while λ dictates the magnitude of deviation (Fig. 11B). For instance, for $D=0.001 \text{ m}^2 \text{ yr}^{-1}$ and $\lambda=14 \text{ m}$, we find that C_{HT} is underestimated by >10 percent for erosion rates $>0.04 \text{ mm yr}^{-1}$, and when $\lambda=20 \text{ m}$, C_{HT} is underestimated by >15 percent for that same erosion rate of 0.04 mm yr^{-1} . Thus, while the erosion rates at which we observe significant deviation between measured and model-defined C_{HT} tend to be higher than those found in many soil-mantled landscapes (for $D=0.003 \text{ m}^2 \text{ yr}^{-1}$ and $\lambda=14 \text{ m}$) (Montgomery, 2007), including those tested by Gabet et al. (2021), the strong dependency of this deviation on diffusivity and smoothing scale warrants caution in interpretations of nonlinear relationships between hilltop curvature and erosion rate. Furthermore, without a priori knowledge of the diffusivity, determination of the magnitude of C_{HT} underestimation is challenging to ascertain from topographic data alone (Fig. 11B). Importantly, the underestimation in C_{HT} we note here is independent of topographic noise and surface roughness. Incorporation of such roughness will introduce additional uncertainties. We encourage future work to investigate climatic and other factors that dictate hillslope diffusivity and the potential coupling between diffusivity and erosion rate (e.g. Richardson et al., 2019), although care must be taken to ensure that observed relationships do not result from measurement artifacts that deviate from the true underlying hillslope form.

Current hilltop curvature measurement techniques do not have a well-defined capability to filter topographic noise that is inherent to all landscapes and topographic datasets while maintaining an unbiased value of C_{HT} at elevated-high values of E^* where nearly planar (i.e. negligible curvature) side slopes become increasingly proximal to hilltops. Essentially, the zone of hilltop convexity becomes exceedingly narrow (and thus difficult to estimate) as E^* increases. As such, estimates of erosion rates using Equation 1 should be considered minimum erosion rates, particularly in landscapes with conspicuously sharp hilltops (Figure-Fig. 10). These results strongly motivate future investigation of the structure of topographic noise in landscapes due to underlying processes such as trees throw and other sources of bioturbation, as well as noise inherent to digital

topographic data. Improved understanding of the structure of topographic surface roughness may facilitate future accurate morphologic estimates of erosion rate in moderate to fast-eroding landscapes.

6. Conclusions

We utilized 2D continuous wavelet transforms to calculate hilltop curvature in three catchments in the Oregon Coast Range that exhibit a diversity of hillslopes. We found that the measured hilltop curvature values are comparable to those calculated from fitting 2D polynomial functions to topography to calculate curvature, a method that has been commonly applied elsewhere. Both techniques produce estimates of erosion rate that are consistent with those independently constrained from cosmogenic radionuclides in stream sediments. Specifically, we find that erosion rate calculated with the CWT is $\sim 0.156 \pm 0.055 \text{ mm yr}^{-1}$ in Hadsall Creek, $0.1 \pm 0.05 \text{ mm yr}^{-1}$ in the North Fork Smith River, and $0.01 \pm 0.008 \text{ mm yr}^{-1}$ in three small catchments that drain to Bear Creek. We further we find that the 2D continuous wavelet transform operates 10^2 to $>10^3$ times faster than the 2D polynomial when applied at smoothing scales that are commonly used for calculating hilltop curvature ($\sim 5\text{-}30 \text{ m}$). We additionally find that the computational advantage of the 2D continuous wavelet transform increases as digital elevation models become larger. This dramatic disparity in operation time opens numerous doors for widespread topographic analysis as high-resolution topographic data becomes increasingly available.

We additionally test the accuracy of both the wavelet transform and polynomial by constructing synthetic hillslopes following a nonlinear diffusive hillslope geomorphic transport law. Synthetic hillslopes were constructed with and without added surface noise of various types (white, pink, red/Brownian) and exhibited various forms corresponding to a range of dimensionless erosion rates. We find that both the wavelet transform and polynomial are able to reproduce hilltop curvature for slow dimensionless erosion rates ($E^*=1\text{-}10$). However, we also observe that both techniques produce underestimated values of C_{HT} when $E^* \geq 10$, as planar hillslopes begin to systematically bias the calculated curvature at the hilltop. While this is in part due to the required smoothing of topography to remove added noise, which in natural landscapes is due to stochastic transport processes as well as noise inherent in digital topographic data, we also find that curvature is underestimated on synthetic hillslopes where there is no added noise. At moderate to high dimensionless erosion rates ($E^*=30\text{-}100$), we find that hilltop curvature is systematically underestimated as hillslopes become progressively narrower near the hilltop. This systematic deviation from the defined and measured hilltop curvature has key implications for predicting erosion rates in soil mantled landscapes. In landscapes eroding at moderate to rapid rates, erosion rates calculated with hilltop curvature should be considered a minimum. Finally, we demonstrate that underestimation of synthetic hilltop curvature at moderate to fast erosion rates results in apparent power law and square root relationships between erosion rate and hilltop curvature. This previously observed relationship from natural hillslopes has led to suggestions that hillslope diffusivity may also vary as the square root of erosion rate. Our results here, however, demonstrate that this is likely may be a measurement artifact introduced by planar hillslopes biasing hilltop curvature measurements as hilltops progressively narrow and steepen, not simply due to poor data resolution. Future hillslope geomorphic work must more clearly characterize the roughness ~~characteristics~~ of soil mantled hillslopes and develop methods that smooth and remove topographic noise while maintaining an unbiased hilltop curvature measurement, if hilltop curvature is to be applied in rapidly eroding landscapes.

605

Code and Data Availability

610 We utilized TopoToolbox (<https://topotoolbox.wordpress.com/download>; Schwanghart and Scherler, 2014) code in this paper, which is freely available. We additionally used wavelet codes from the Automated Landslide Mapping toolkit (ALMtools) by Adam Booth (<http://web.pdx.edu/~boothad/tools.html>; Booth et al., 2009). Additional MATLAB scripts, including for synthetic hillslope construction, are available at <https://github.com/wtstruble>. All utilized lidar DEMs are publicly available from the Oregon Department of Geology and Mineral Industries (<https://www.oregongeology.org/lidar/>).

615

Author Contributions

WS and JR conceived of and designed the study. WS developed the study and completed the analysis. WS prepared the manuscript with contributions from JR.

620 Competing Interests

The authors declare that they have no conflict of interest.

Acknowledgements

625 Thank you to Brooke Hunter, Danica Roth, Fiona Clubb, and Odin Marc for helpful discussions. Tyler Doane, ~~and an~~ anonymous reviewer, ~~and associate editor Simon Mudd~~ provided insightful reviews that improved the quality of the manuscript. We are particularly grateful to Adam Booth, who provided several helpful and enlightening conversations about wavelets. ¹⁰Be data processed at Lawrence Livermore National Laboratory.

References

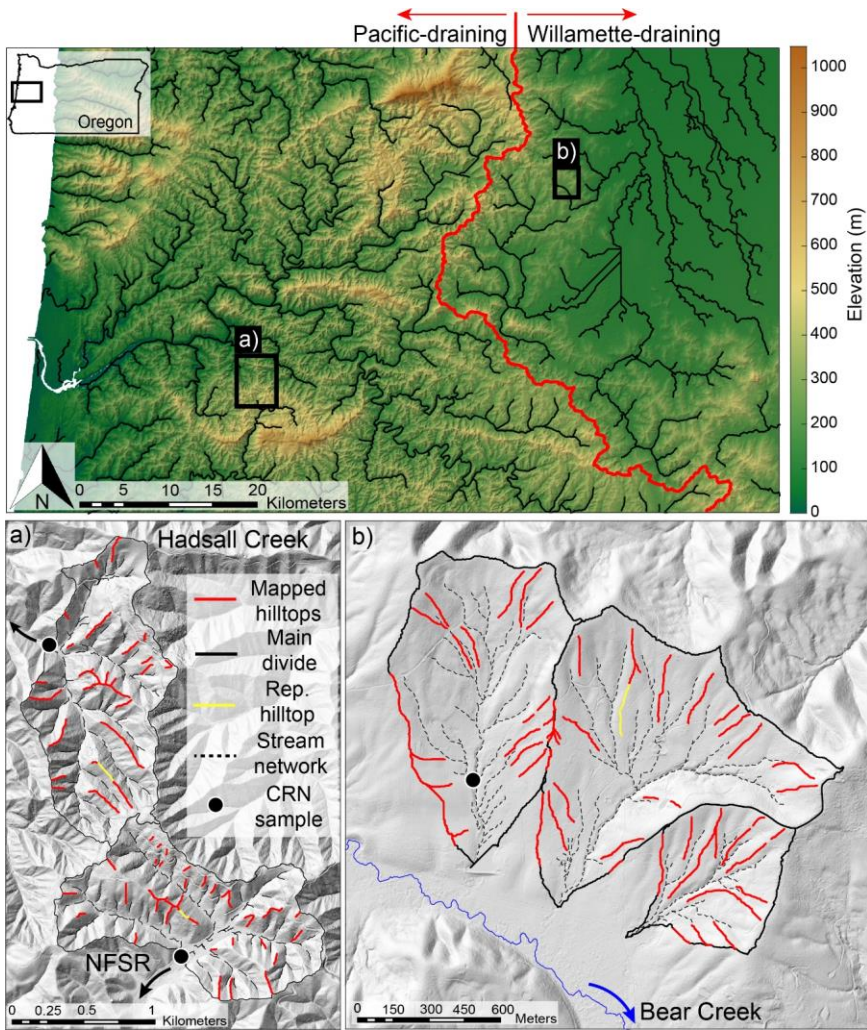
- 630 Almond, P., Roering, J., and Hales, T.C.: Using soil residence time to delineate spatial and temporal patterns of transient landscape response. *Journal of Geophysical Research* 112, <https://doi.org/10.1029/2006JF000568>, 2007.
- Andrews, D.J., and Bucknam, R.C.: Fitting degradation of shoreline scarps by a nonlinear diffusion model. *J. Geophys. Res.* 92, 12857, <https://doi.org/10.1029/JB092iB12p12857>, 1987.
- Audet, P.: Toward mapping the effective elastic thickness of planetary lithospheres from a spherical wavelet analysis of gravity and topography. *Physics of the Earth and Planetary Interiors* 226, 48–82, <https://doi.org/10.1016/j.pepi.2013.09.011>, 2014.
- 635 Balco, G., Finnegan, N., Gendaszek, A., Stone, J.O., and Thompson, N.: Erosional response to northward-propagating crustal thickening in the coastal ranges of the US Pacific Northwest. *American Journal of Science* 313, 790–806, 2013.

- Balco, G., Stone, J.O., Lifton, N.A., and Dunai, T.J.: A complete and easily accessible means of calculating surface exposure ages or erosion rates from ^{10}Be and ^{26}Al measurements. *Quaternary Geochronology* 3, 174–195, <https://doi.org/10.1016/j.quageo.2007.12.001>, 2008.
- 640 Baldwin, E.M.: Geologic map of the lower Siuslaw River area, Oregon, 1956.
- Barnhart, K.R., Tucker, G.E., Doty, S.G., Shobe, C.M., Glade, R.C., Rossi, M.W., and Hill, M.C.: Inverting Topography for Landscape Evolution Model Process Representation: 1. Conceptualization and Sensitivity Analysis. *J. Geophys. Res. Earth Surf.* 125, <https://doi.org/10.1029/2018JF004961>, 2020.
- 645 Benda, L., and Dunne, T.: Stochastic forcing of sediment supply to channel networks from landsliding and debris flow. *Water Resources Research* 33, 2849–2863. <https://doi.org/10.1029/97WR02388>, 1997.
- BenDror, E., and Goren, L.: Controls Over Sediment Flux Along Soil-Mantled Hillslopes: Insights from Granular Dynamics Simulations. *Journal of Geophysical Research* 123, 21. <https://doi.org/10.1002/2017JF004351>, 2018.
- 650 Bierman, P., Clapp, E., Nichols, K., Gillespie, A., and Caffee, M.W.: Using cosmogenic nuclide measurements in sediments to understand background rates of erosion and sediment transport, in: *Landscape Erosion and Evolution Modeling*. Springer, pp. 89–115, 2001.
- Black, B.A., Perron, J.T., Hemingway, D., Bailey, E., Nimmo, F., and Zebker, H.: Global drainage patterns and the origins of topographic relief on Earth, Mars, and Titan. *Science* 356, 727–731, <https://doi.org/10.1126/science.aag0171>, 2017.
- 655 Booth, A.M., Roering, J.J., and Perron, J.T.: Automated landslide mapping using spectral analysis and high-resolution topographic data: Puget Sound lowlands, Washington, and Portland Hills, Oregon. *Geomorphology* 109, 132–147, <https://doi.org/10.1016/j.geomorph.2009.02.027>, 2009.
- Burbank, D.W., Leland, J., Fielding, E., Anderson, R.S., Brozovic, N., Reid, M.R., and Duncan, C.: Bedrock incision, rock uplift and threshold hillslopes in the northwestern Himalayas. *Nature* 379, 505–510, <https://doi.org/10.1038/379505a0>, 1996.
- 660 Clubb, F.J., Mudd, S.M., Hurst, M.D., and Grieve, S.W.D.: Differences in channel and hillslope geometry record a migrating uplift wave at the Mendocino triple junction, California, USA. *Geology* 48, 184–188, <https://doi.org/10.1130/G46939.1>, 2020.
- Clubb, F.J., Mudd, S.M., Milodowski, D.T., Hurst, M.D., Slater, L.J.: Objective extraction of channel heads from high-resolution topographic data. *Water Resour. Res.* 50, 4283–4304. <https://doi.org/10.1002/2013WR015167>, 2014.
- 665 Deshpande, N., Furbish, D., Arratia, P., and Jerolmack, D.: The perpetual fragility of creeping hillslopes. *Nature Communications* 12, 3909, <https://doi.org/10.31223/OSF.IO/QC9JH>, 2021.
- DiBiase, R.A., Heimsath, A.M., and Whipple, K.X.: Hillslope response to tectonic forcing in threshold landscapes. *Earth Surface Processes and Landforms* 37, 855–865, <https://doi.org/10.1002/esp.3205>, 2012.
- 670 Dietrich, W.E., Bellugi, D.G., Sklar, L.S., Stock, J.D., Heimsath, A.M., and Roering, J.J.: Geomorphic transport laws for predicting landscape form and dynamics, in: Wilcock, P.R., Iverson, R.M. (Eds.), *Geophysical Monograph Series*. American Geophysical Union, Washington, D. C., pp. 103–132, 2003.
- Dietrich, W.E., and Dunne, T.: Sediment budget for a small catchment in mountainous terrain. *Zeitschrift für Geomorphologie N.F.* 29, 191–206, <https://doi.org/10.1007/s10069-002-0008-0>, 1978.
- 675 Doane, T.H., Roth, D.L., Roering, J.J., and Furbish, D.J.: Compression and Decay of Hillslope Topographic Variance in Fourier Wavenumber Domain. *Journal of Geophysical Research: Earth Surface*, <https://doi.org/10.1029/2018JF004724>, 2019.
- Ferdowsi, B., Ortiz, C.P., and Jerolmack, D.J.: Glassy dynamics of landscape evolution. *Proceedings of the National Academy of Sciences* 115, 6, <https://doi.org/10.1073/pnas.1715250115>, 2018.
- 680 Forte, A.M., and Whipple, K.X.: Criteria and tools for determining drainage divide stability. *Earth and Planetary Science Letters* 493, 102–117. <https://doi.org/10.1016/j.epsl.2018.04.026>, 2018.
- Foufoula-Georgiou, E., and Kumar, P.: *Wavelet Analysis in Geophysics, in: Wavelet Analysis and Its Applications*. Academic Press, New York, p. 372, <https://doi.org/10.1016/B978-0-08-052087-2.50007-4>, 1994.
- Fox, M.: A linear inverse method to reconstruct paleo-topography. *Geomorphology* 337, 151–164, <https://doi.org/10.1016/j.geomorph.2019.03.034>, 2019.
- 685 Franczyk, J.J., Burns, W.J., and Calhoun, N.C.: *Statewide Landslide Information Database for Oregon Release-4.0, SLIDO 4.0, Digital Data Series*. Oregon Department of Geology and Mineral Industries, 2019.

- Gabet, E.J.: Gopher bioturbation: Field evidence for non-linear hillslope diffusion. *Earth Surface Processes and Landforms* 25, 10. [https://doi.org/10.1002/1096-9837\(200012\)25:13<1419::AID-ESP148>3.0.CO;2-1](https://doi.org/10.1002/1096-9837(200012)25:13<1419::AID-ESP148>3.0.CO;2-1), 2000.
- 690 Gabet, E.J., Mudd, S.M., Wood, R.W., Grieve, S.W.D., Binnie, S.A., and Dunai, T.J.: Hilltop Curvature Increases with the Square Root of Erosion Rate. *Journal of Geophysical Research: Earth Surface* in press. <https://doi.org/10.1029/2020JF005858>, 2021.
- Ganti, V., Passalacqua, P., and Fouloula-Georgiou, E.: A sub-grid scale closure for nonlinear hillslope sediment transport models. *J. Geophys. Res.* 117, <https://doi.org/10.1029/2011JF002181>, 2012.
- 695 García-Serrana, M., Gulliver, J.S., and Nieber, J.L.: Description of soil micro-topography and fractional wetted area under runoff using fractal dimensions: Soil micro-topography, fractional wetted area, and fractal dimensions. *Earth Surf. Process. Landforms* 43, 2685–2697, <https://doi.org/10.1002/esp.4424>, 2018.
- Gilbert, G.K.: The Convexity of Hilltops. *The Journal of Geology* 17, 344–350, <https://doi.org/10.1086/621620>, 1909.
- Gilbert, G.K.: Report on the Geology of the Henry Mountains. US Government Printing Office, 1877.
- 700 Godard, V., Hippolyte, J.-C., Cushing, E., Espurt, N., Fleury, J., Bellier, O., Ollivier, V., and the ASTER Team.: Hillslope denudation and morphologic response to a rock uplift gradient. *Earth Surf. Dynam.* 8, 221–243. <https://doi.org/10.5194/esurf-8-221-2020>, 2020.
- Grieve, S.W.D., Mudd, S.M., Hurst, M.D., and Milodowski, D.T.: A nondimensional framework for exploring the relief structure of landscapes. *Earth Surface Dynamics* 4, 309–325. <https://doi.org/10.5194/esurf-4-309-2016>, 2016a.
- 705 Grieve, S.W.D., Mudd, S.M., Milodowski, D.T., Clubb, F.J., and Furbish, D.J.: How does grid-resolution modulate the topographic expression of geomorphic processes? *Earth Surface Dynamics* 4, 627–653. <https://doi.org/10.5194/esurf-4-627-2016>, 2016b.
- Heimsath, A.M., Dietrich, W.E., Kunihiko, N., and Finkel, R.C.: The soil production function and landscape equilibrium. *Nature* 388, 358–361, 1997.
- 710 Heimsath, A.M., Dietrich, W.E., Nishiizumi, K., and Finkel, R.C.: Stochastic processes of soil production and transport: erosion rates, topographic variation and cosmogenic nuclides in the Oregon Coast Range. *Earth Surf. Process. Landforms* 26, 531–552, <https://doi.org/10.1002/esp.209>, 2001
- Heller, P.L., and Dickinson, W.R.: Submarine Ramp Facies Model for Delta-Fed, Sand-Rich Turbidite Systems. *AAPG Bulletin* 69, <https://doi.org/10.1306/AD462B37-16F7-11D7-8645000102C1865D>, 1985
- Howard, A.D.: A detachment-limited model of drainage basin evolution. *Water Resources Research* 30, 2261–2285, 1994
- 715 Hurst, M.D., Grieve, S.W.D., Clubb, F.J., and Mudd, S.M.: Detection of channel-hillslope coupling along a tectonic gradient. *Earth and Planetary Science Letters* 522, 30–39, <https://doi.org/10.1016/j.epsl.2019.06.018>, 2019.
- Hurst, M.D., Mudd, S.M., Attal, M., and Hilley, G.: Hillslopes Record the Growth and Decay of Landscapes. *Science* 341, 868–871, <https://doi.org/10.1126/science.1241791>, 2013.
- 720 Hurst, M.D., Mudd, S.M., Walcott, R., Attal, M., and Yoo, K.: Using hilltop curvature to derive the spatial distribution of erosion rates. *Journal of Geophysical Research: Earth Surface* 117, <https://doi.org/10.1029/2011JF002057>, 2012.
- Jordan, G., and Schott, B.: Application of wavelet analysis to the study of spatial pattern of morphotectonic lineaments in digital terrain models. A case study. *Remote Sensing of Environment* 94, 31–38, <https://doi.org/10.1016/j.rse.2004.08.013>, 2005.
- 725 Kelsey, H.M., Ticknor, R.L., Bockheim, J.G., and Mitchell, E.: Quaternary upper plate deformation in coastal Oregon. *Geological Society of America Bulletin* 108, 843–860, 1996.
- Kirby, E., and Whipple, K.: Quantifying differential rock-uplift rates via stream profile analysis. *Geology* 29, 415–418, 2001.
- Kirby, E., and Whipple, K.X.: Expression of active tectonics in erosional landscapes. *Journal of Structural Geology* 44, 54–75, <https://doi.org/10.1016/j.jsg.2012.07.009>, 2012.
- Konowalczyk, M.: randnd (<https://github.com/MarcinKonowalczyk/randn>), GitHub, 2021.
- 730 LaHusen, S.R., Duvall, A.R., Booth, A.M., Grant, A., Mishkin, B.A., Montgomery, D.R., Struble, W., Roering, J.J., and Wartman, J.: Rainfall triggers more deep-seated landslides than Cascadia earthquakes in the Oregon Coast Range, USA. *Science Advances* 6, <https://doi.org/10.1126/sciadv.aba6790>, 2020.
- Larsen, I.J., and Montgomery, D.R.: Landslide erosion coupled to tectonics and river incision. *Nature Geoscience* 5, 468–473, <https://doi.org/10.1038/ngeo1479>, 2012.
- 735 Lashermes, B., Fouloula-Georgiou, E., and Dietrich, W.E.: Channel network extraction from high resolution topography using wavelets. *Geophysical Research Letters* 34, <https://doi.org/10.1029/2007GL031140>, 2007.

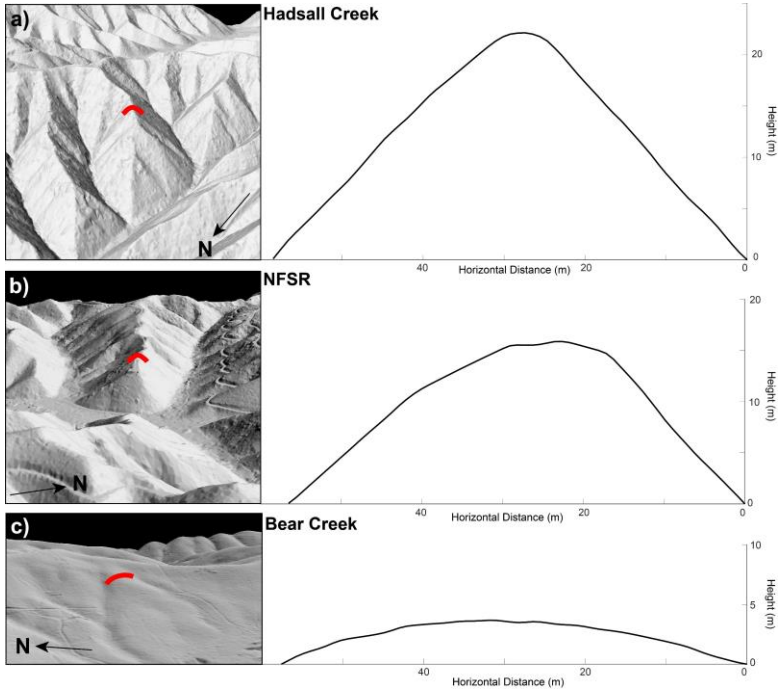
- Lovell, J.P.B.: Tye Formation: Undeformed Turbidites and their Lateral Equivalents: Mineralogy and Paleogeography. *Geol Soc America Bull* 80, 9, [https://doi.org/10.1130/0016-7606\(1969\)80\[9:TFUTAT\]2.0.CO;2](https://doi.org/10.1130/0016-7606(1969)80[9:TFUTAT]2.0.CO;2), 1969.
- 740 Malamud, B.D., and Turcotte, D.L.: Wavelet analyses of Mars polar topography. *J. Geophys. Res.* 106, 17497–17504, <https://doi.org/10.1029/2000JE001333>, 2001.
- Marshall, J.A., and Roering, J.J.: Diagenetic variation in the Oregon Coast Range: Implications for rock strength, soil production, hillslope form, and landscape evolution. *Journal of Geophysical Research: Earth Surface* 119, 1395–1417, <https://doi.org/10.1002/2013JF003004>, 2014.
- 745 Marshall, J.A., Roering, J.J., Bartlein, P.J., Gavin, D.G., Granger, D.E., Rempel, A.W., Praskievicz, S.J., and Hales, T.C.: Frost for the trees: Did climate increase erosion in unglaciated landscapes during the late Pleistocene? *Science Advances* 1, e1500715–e1500715, <https://doi.org/10.1126/sciadv.1500715>, 2015.
- Minár, J., Evans, I.S., and Jenčo, M.: A comprehensive system of definitions of land surface (topographic) curvatures, with implications for their application in geoscience modelling and prediction. *Earth-Science Reviews* 211, 103414, <https://doi.org/10.1016/j.earscirev.2020.103414>, 2020.
- 750 Mohren, J., Binnie, S.A., Ritter, B., and Dunai, T.J.: Development of a steep erosional gradient over a short distance in the hyperarid core of the Atacama Desert, northern Chile. *Global and Planetary Change* 184, 103068, <https://doi.org/10.1016/j.gloplacha.2019.103068>, 2020.
- Montgomery, D.R.: Soil erosion and agricultural sustainability. *Proceedings of the National Academy of Sciences* 104, 13268–13272. <https://doi.org/10.1073/pnas.0611508104>, 2007.
- 755 Montgomery, D.R.: Slope distributions, threshold hillslopes, and steady-state topography. *American Journal of Science* 301, 432–454, 2001.
- Moore, I.D., Grayson, R.B., and Ladson, A.R.: Digital terrain modelling: A review of hydrological, geomorphological, and biological applications. *Hydrol. Process.* 5, 3–30, <https://doi.org/10.1002/hyp.3360050103>, 1991.
- Mudd, S.M.: Detection of transience in eroding landscapes: Detection of Transience in Eroding Landscapes. *Earth Surf. Process. Landforms* 42, 24–41, <https://doi.org/10.1002/esp.3923>, 2017.
- 760 Mudd, S.M., and Furbish, D.J.: Responses of soil-mantled hillslopes to transient channel incision rates. *Journal of Geophysical Research* 112, <https://doi.org/10.1029/2006JF000516>, 2007.
- Mudd, S.M., and Furbish, D.J.: Lateral migration of hillcrests in response to channel incision in soil-mantled landscapes. *Journal of Geophysical Research: Earth Surface* 110, <https://doi.org/10.1029/2005JF000313>, 2005.
- 765 Neely, A.B., DiBiase, R.A., Corbett, L.B., Bierman, P.R., and Caffee, M.W.: Bedrock fracture density controls on hillslope erodibility in steep, rocky landscapes with patchy soil cover, southern California, USA. *Earth and Planetary Science Letters* 522, 186–197, <https://doi.org/10.1016/j.epsl.2019.06.011>, 2019.
- Ouimet, W.B., Whipple, K.X., and Granger, D.E.: Beyond threshold hillslopes: Channel adjustment to base-level fall in tectonically active mountain ranges. *Geology* 37, 579–582, <https://doi.org/10.1130/G30013A.1>, 2009.
- 770 Passalacqua, P., Do Trung, T., Fofoula-Georgiou, E., Sapiro, G., and Dietrich, W.E.: A geometric framework for channel network extraction from lidar: Nonlinear diffusion and geodesic paths. *Journal of Geophysical Research* 115, <https://doi.org/10.1029/2009JF001254>, 2010.
- Pelletier, J.D., and Field, J.P.: Predicting the roughness length of turbulent flows over landscapes with multi-scale microtopography. *Earth Surf. Dynam.* 4, 391–405, <https://doi.org/10.5194/esurf-4-391-2016>, 2016.
- 775 Penck, W.: *Morphological Analysis of Landforms*. Macmillan, Indianapolis, Indiana, 1953.
- Penseri, B.D., Roering, J.J., and Streig, A.: A morphologic proxy for debris flow erosion with application to the earthquake deformation cycle, Cascadia Subduction Zone, USA. *Geomorphology* 282, 150–161, <https://doi.org/10.1016/j.geomorph.2017.01.018>, 2017.
- 780 Perron, J.T., Kirchner, J.W., and Dietrich, W.E.: Spectral signatures of characteristic spatial scales and nonfractal structure in landscapes. *Journal of Geophysical Research* 113, <https://doi.org/10.1029/2007JF000866>, 2008.
- Perron, J.T., and Royden, L.: An integral approach to bedrock river profile analysis. *Earth Surface Processes and Landforms* 38, 570–576, <https://doi.org/10.1002/esp.3302>, 2013.
- Personius, S.F.: Late Quaternary stream incision and uplift in the forearc of the Cascadia subduction zone, western Oregon. *Journal of Geophysical Research: Solid Earth* 100, 20193–20210, <https://doi.org/10.1029/95JB01684>, 1995.
- 785 PRISM Climate Group.: PRISM Climate Group: Oregon State University, 2016.

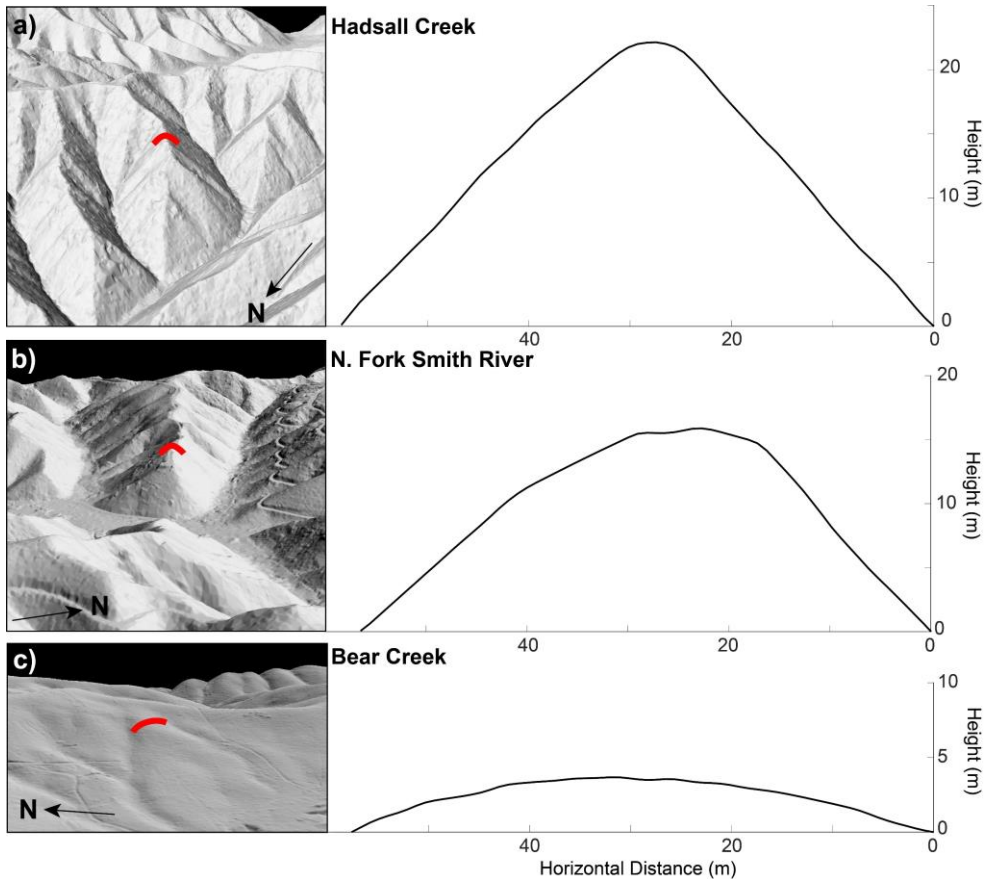
- Reneau, S.L., and Dietrich, W.E.: Erosion rates in the southern Oregon Coast Range: Evidence for an equilibrium between hillslope erosion and sediment yield. *Earth Surface Processes and Landforms* 16, 307–322, <https://doi.org/10.1002/esp.3290160405>, 1991.
- 790 Richardson, P.W., Perron, J.T., and Schurr, N.D.: Influences of climate and life on hillslope sediment transport. *Geology* 47, <https://doi.org/10.1130/G45305.1>, 2019.
- Roberts, G.G., and White, N.: Estimating uplift rate histories from river profiles using African examples. *J. Geophys. Res.* 115, B02406, <https://doi.org/10.1029/2009JB006692>, 2010.
- Roering, J.J.: How well can hillslope evolution models “explain” topography? Simulating soil transport and production with high-resolution topographic data. *Geological Society of America Bulletin* 120, 1248–1262, <https://doi.org/10.1130/B26283.1>, 2008.
- 795 Roering, J.J., Kirchner, J.W., and Dietrich, W.E.: Characterizing structural and lithologic controls on deep-seated landsliding: Implications for topographic relief and landscape evolution in the Oregon Coast Range, USA. *Geological Society of America Bulletin* 117, 654, <https://doi.org/10.1130/B25567.1>, 2005.
- 800 Roering, J.J., Kirchner, J.W., and Dietrich, W.E.: Hillslope evolution by nonlinear, slope-dependent transport: Steady state morphology and equilibrium adjustment timescales. *Journal of Geophysical Research* 106, 16499–16513, <https://doi.org/10.1139/t01-031>, 2001.
- Roering, J.J., Kirchner, J.W., and Dietrich, W.E.: Evidence for nonlinear, diffusive sediment transport on hillslopes and implications for landscape morphology. *Water Resources Research* 35, 853–870, <https://doi.org/10.1029/1998WR900090>, 1999.
- 805 Roering, J.J., Marshall, J., Booth, A.M., Mort, M., and Jin, Q.: Evidence for biotic controls on topography and soil production. *Earth and Planetary Science Letters* 298, 183–190, <https://doi.org/10.1016/j.epsl.2010.07.040>, 2010.
- Roering, J.J., Perron, J.T., and Kirchner, J.W.: Functional relationships between denudation and hillslope form and relief. *Earth and Planetary Science Letters* 264, 245–258, <https://doi.org/10.1016/j.epsl.2007.09.035>, 2007.
- 810 Roth, D.L., Doane, T.H., Roering, J.J., Furbish, D.J., and Zettler-Mann, A.: Particle motion on burned and vegetated hillslopes. *Proc Natl Acad Sci USA* 201922495, <https://doi.org/10.1073/pnas.1922495117>, 2020.
- Royden, L., and Perron, J.T.: Solutions of the stream power equation and application to the evolution of river longitudinal profiles. *Journal of Geophysical Research: Earth Surface* 118, 497–518, <https://doi.org/10.1002/jgrf.20031>, 2013.
- Scherler, D., and Schwanghart, W.: Drainage divide networks – Part 1: Identification and ordering in digital elevation models. *Earth Surf. Dynam.* 8, 245–259, <https://doi.org/10.5194/esurf-8-245-2020>, 2020.
- 815 Schumm, S.A.: Rates of Surficial Rock Creep on Hillslopes in Western Colorado. *Science* 155, 560–562, <https://doi.org/10.1126/science.155.3762.560>, 1967.
- Schwanghart, W., and Scherler, D.: Short Communication: TopoToolbox 2 – MATLAB-based software for topographic analysis and modeling in Earth surface sciences. *Earth Surf. Dynam.* 2, 1–7, <https://doi.org/10.5194/esurf-2-1-2014>, 2014.
- 820 Stock, J., and Dietrich, W.E.: Valley incision by debris flows: Evidence of a topographic signature. *Water Resources Research* 39, <https://doi.org/10.1029/2001WR001057>, 2003.
- Strahler, A.N.: Equilibrium theory of erosional slopes approached by frequency distribution analysis; Part I. *American Journal of Science* 248, 673–696, <https://doi.org/10.2475/ajls.248.10.673>, 1950.
- 825 Struble, W.T., Roering, J.J., Dorsey, R.J., and Bendick, R.: Characteristic Scales of Drainage Reorganization in Cascadia. *Geophys Res Lett* 48, <https://doi.org/10.1029/2020GL091413>, 2021.
- Sweeney, K.E., Roering, J.J., Almond, P., and Reckling, T.: How steady are steady-state landscapes? Using visible–near-infrared soil spectroscopy to quantify erosional variability. *Geology* 40, 807–810, <https://doi.org/10.1130/G33167.1>, 2012.
- 830 Torrence, C., and Compo, G.P.: A Practical Guide to Wavelet Analysis. *Bulletin of the American Meteorological Society* 79, 18, 1998.
- Willett, S.D., McCoy, S.W., Perron, J.T., Goren, L., and Chen, C.-Y.: Dynamic Reorganization of River Basins. *Science* 343, 1248765–1248765, <https://doi.org/10.1126/science.1248765>, 2014.
- 835 Wobus, C., Whipple, K.X., Kirby, E., Snyder, N., Johnson, J., Spyropoulou, K., Crosby, B., and Sheehan, D.: Tectonics from topography: Procedures, promise, and pitfalls, in: Special Paper 398: Tectonics, Climate, and Landscape Evolution. *Geological Society of America*, pp. 55–74, [https://doi.org/10.1130/2006.2398\(04\)](https://doi.org/10.1130/2006.2398(04)), 2006.



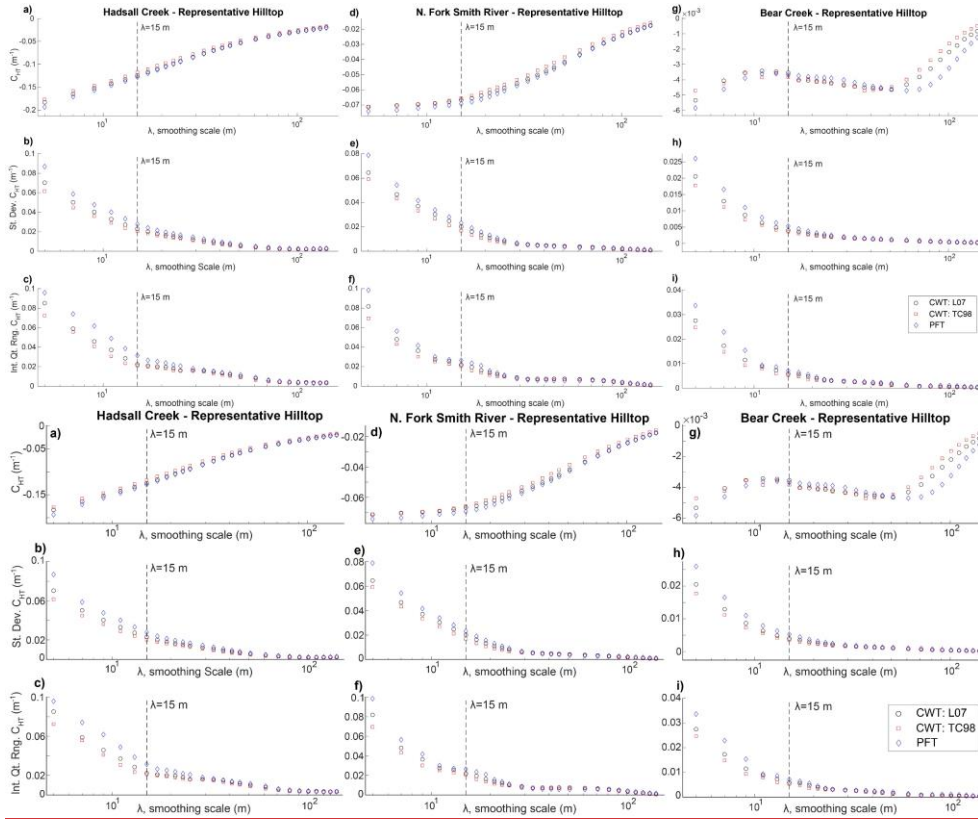
840 **Figure 1: Oregon Coast Range study sites.** Note the drainage divide (red) between catchments that flow directly to the Pacific Ocean and those that flow east into the Willamette River, which then flows northward to the Columbia River. A) Hadsall Creek and the North Fork Smith River (NFSR). B) The three catchments that flow to Bear Creek. Arrows in A) and B) denote river flow direction. Representative (Rep.) hilltop selected so that it approximates the average curvature for the catchment when compared to curvature measurements taken for all hilltops

845



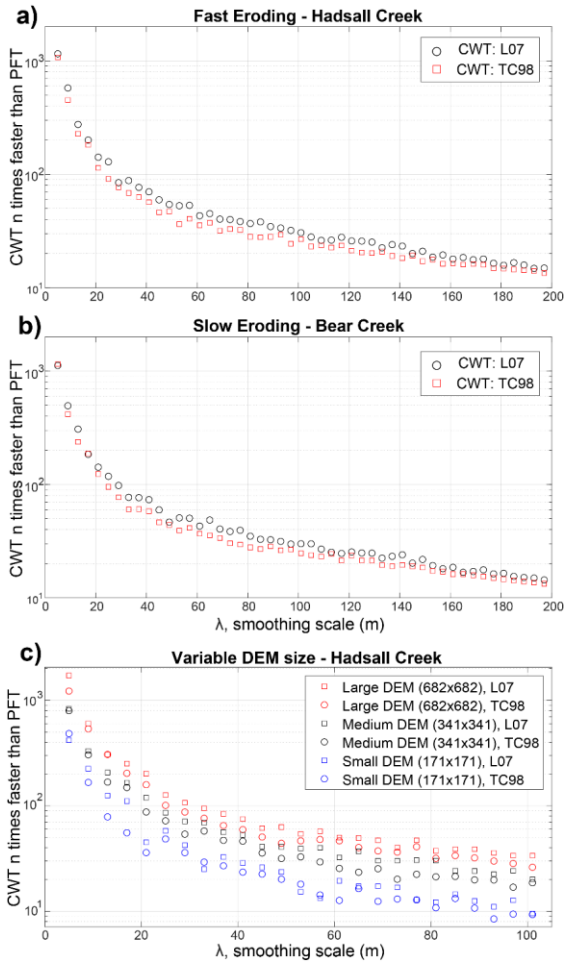


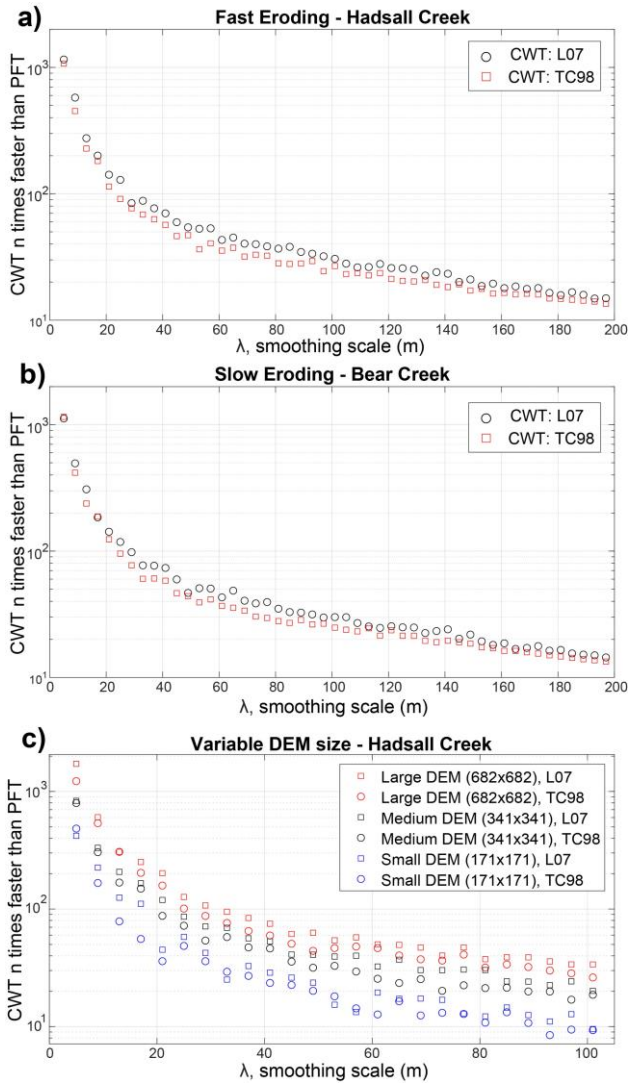
850 **Figure 2: Oregon Coast Range hillslope profiles.** Example lidar hillshades of hillslopes from Hadsall Creek (a), the
 855 **North Fork Smith River (b; NFSR), and Bear Creek (c).** Red lines in hillshades correspond to the hillslope profiles in
 right column. Note that hillslope profiles have the same horizontal scale, allowing for clear visualization of the
 difference in hillslope relief between sites. Each sample hillslope profile corresponds to the representative hilltop in
 each catchment (yellow lines in Figure 1). Note that at the rapidly eroding Hadsall Creek and NFSR, the hillslopes
 have attained threshold gradients and are near-planar. C_{HT} , however, still reflects the difference in erosion rate
 between sites.



860 **Figure 3: Curvature extracted from representative hilltop at Hadsall Creek, NFSR, and Bear Creek for a range of λ . Upper row is C_{HT} measurements, second row is the standard deviation of C_{HT} , and the bottom row is the interquartile range of C_{HT} . Note that the scaling break that identifies where tree throw pits are filtered out depends on the size of the considered hillslope and consistency of pit-mound topographic in a landscape. Here, though, a break exists at $\lambda \approx 15$ m for Hadsall Creek (especially apparent in standard deviation and interquartile range) and the NFSR and Bear Creek at $\lambda \approx 11-20$ m (note that second break at ~ 60 m in Bear Creek corresponds to the introduction of concave valleys). These scaling breaks are generally consistent with those observed for the OCR by Roering et al. (2010) and are visible for CWT and PFT λ definitions.- [L07: Lashermes et al. \(2007\)](#); [TC98: Torrence and Compo \(1998\)](#).**

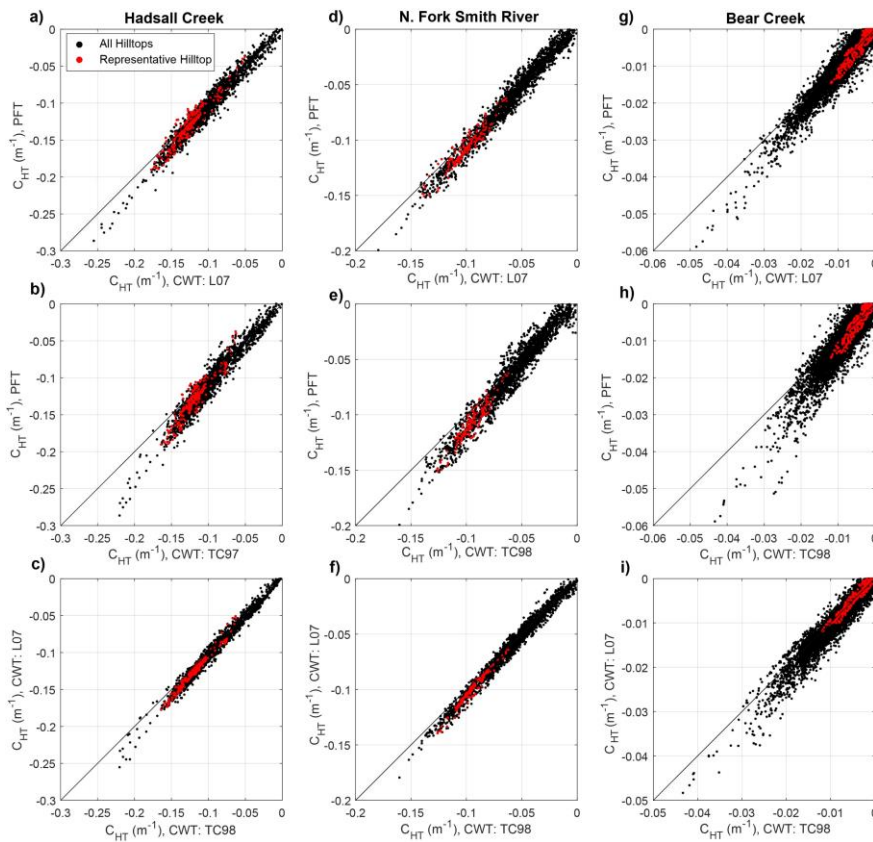
865





870 **Figure 4: Speed of the CWT compared to the PFT for different smoothing scales, λ . A, B: Relative speed of the CWT to the PFT for small portions (513x513 single precision grid, cell size of 0.9144 m) of the Hadsall and Bear Creek catchments, quantified as the ratio of CWT/PFT processing time. Thus, for each smoothing scale, each point can be interpreted as the CWT being n times faster than the PFT. At small λ , the CWT is >1000 times faster than the PFT. The CWT remains >100 times faster than the PFT until $\lambda \approx 30$ m, a scale that is usually larger than most smoothing scales utilized in C_{HT} calculation. C: Relative speed of the CWT to PFT for DEMs of various size in Hadsall Creek for $\lambda=5-101$ m. Largest DEM is 682x682 pixels. The medium-sized DEM is the upper-left quadrant of the large DEM (341x341 pixels), and the small DEM is upper-left quadrant of medium DEM (171x171 pixels). Note that the CWT increases in relative speed as DEM size increases. [L07: Lashermes et al. \(2007\)](#); [TC98: Torrence and Compo \(1998\)](#).**

875



880

Figure 5: Comparison of C_{HT} calculation methods for $\lambda=15$ m. Black dots correspond with curvature measured at nodes for all mapped hilltops (roads, landslides, valley bottoms, etc. *removed*). Red points correspond with the representative hilltop nodes (Fig. 1). Perfect agreement between measurement techniques would plot as 1:1 line (black line). Recall that more positive (lower magnitude) C_{HT} corresponds with more gentle hillslopes (upper-right corner). See text for details. L07: Lashermes et al. (2007); TC98: Torrence and Compo (1998).

885

Site	Lat. (° N)	Long. (° W)		Mean C_{HT} (m ⁻¹)			Median C_{HT} (m ⁻¹)			Standard Deviation C_{HT} (m ⁻¹)		
				CWT (L07)	CWT (TC98)	PFT	CWT (L07)	CWT (TC98)	PFT	CWT (L07)	CWT (TC98)	PFT
Hadsall Creek	43.983	-123.823	All Hilltops	-0.104	-0.099	-0.110	-0.111	-0.106	-0.116	0.037	0.034	0.040
			Rep. Hilltop	-0.125	-0.119	-0.129	-0.126	-0.120	-0.128	0.023	0.020	0.028
NFSR	43.963	-123.811	All Hilltops	-0.061	-0.059	-0.065	-0.059	-0.057	-0.061	0.033	0.037	0.037
			Rep. Hilltop	-0.067	-0.066	-0.069	-0.063	-0.063	-0.068	0.020	0.017	0.023
Bear Creek	44.181	-123.371	All Hilltops	-0.007	-0.006	-0.008	-0.006	-0.005	-0.006	0.006	0.005	0.007
			Rep. Hilltop	-0.005	-0.005	-0.006	-0.004	-0.004	-0.005	0.003	0.003	0.004

Table 1: C_{HT} measured at OCR study sites by the CWT and PFT for $\lambda=15$ m. L07: λ definition of Lashermes et al. (2007); TC98: λ definition of Torrence and Compo (1998). All values rounded to nearest 10-thousandth.

890

Site	Lat. (° N)	Long. (° W)		Mean E (mm yr ⁻¹)			Median E (mm yr ⁻¹)			Standard Deviation E (mm yr ⁻¹)			CRN E (mm yr ⁻¹)
				CWT (L07)	CWT (TC98)	PFT	CWT (L07)	CWT (TC98)	PFT	CWT (L07)	CWT (TC98)	PFT	
Hadsall Creek	43.983	-123.823	All Hilltops	0.156	0.149	0.164	0.167	0.159	0.174	0.055	0.051	0.060	0.113±0.018 ^a
			Rep. Hilltop	0.188	0.178	0.193	0.189	0.179	0.193	0.034	0.030	0.042	
NFSR	43.963	-123.811	All Hilltops	0.100	0.099	0.104	0.088	0.086	0.092	0.050	0.046	0.055	0.058±0.0054 ^a
			Rep. Hilltop	0.092	0.088	0.097	0.095	0.095	0.101	0.030	0.025	0.035	
Bear Creek	44.181	-123.371	All Hilltops	0.010	0.009	0.012	0.008	0.008	0.009	0.008	0.007	0.010	0.008±0.0007 ^b
			Rep. Hilltop	0.007	0.007	0.009	0.006	0.006	0.008	0.005	0.005	0.006	

Table 2: Erosion rate at OCR study sites calculated with Equation 1, assuming $D=0.003$ m² yr⁻¹ and $\frac{\rho_s}{\rho_r}=0.5$. L07: λ definition of Lashermes et al. (2007); TC98: λ definition of Torrence and Compo (1998). All values rounded to nearest 10-thousandth.

895

^aRecalculated erosion rates from Penserini et al. (2017); see Table 3.

^bSee Table 4.

900

Catchment	Location	Concentration (atoms g ⁻¹ quartz)	Error (atoms g ⁻¹ quartz)	Erosion Rate (mm/yr)	Error (mm/yr)	Notes
Hadsall Creek	43.985°N, -123.824°W	33766.10 (¹⁰ Be)	4666.26 (¹⁰ Be)	0.113	0.018	Recalculated from Penserini et al. (2017)
NFSR	43.964°N, -123.811°W	70902.91 (¹⁰ Be)	3408.59 (¹⁰ Be)	0.058	0.0054	Recalculated from Penserini et al. (2017)

905 **Table 3: Recalculated CRN erosion rates**

We used the CRONUS online calculator (Balco et al., 2008) to determine catchment-averaged erosion rates from ¹⁰Be in stream sediment. The samples from Hadsall Creek and NFSR are recalculated from the ¹⁰Be data presented by Penserini et al. (2017). Reported CRN error is from external uncertainty.

910

Catchment	Location	Mean Elevation (m)	Shielding Factor	Quartz Weight ^a (g)	Be Carrier Weight (mg)	¹⁰ Be/ ⁹ Be (x 10 ⁻¹³)	¹⁰ Be Concentration (atoms g ⁻¹ quartz)	Erosion Rate (mm/yr)
Bear Creek	44.186°N, -123.375°W	240	1	25.02	221	6.338±0.1175	400833±8011.37	0.008±0.0007

Table 4: New CRN erosion rate at Bear Creek

^aAssumed a density of 2.6 g/cm³.

915 We used the CRONUS online calculator (Balco et al., 2008) to determine catchment-averaged erosion rates from ¹⁰Be in stream sediment at Bear Creek. Reported CRN error is from external uncertainty.

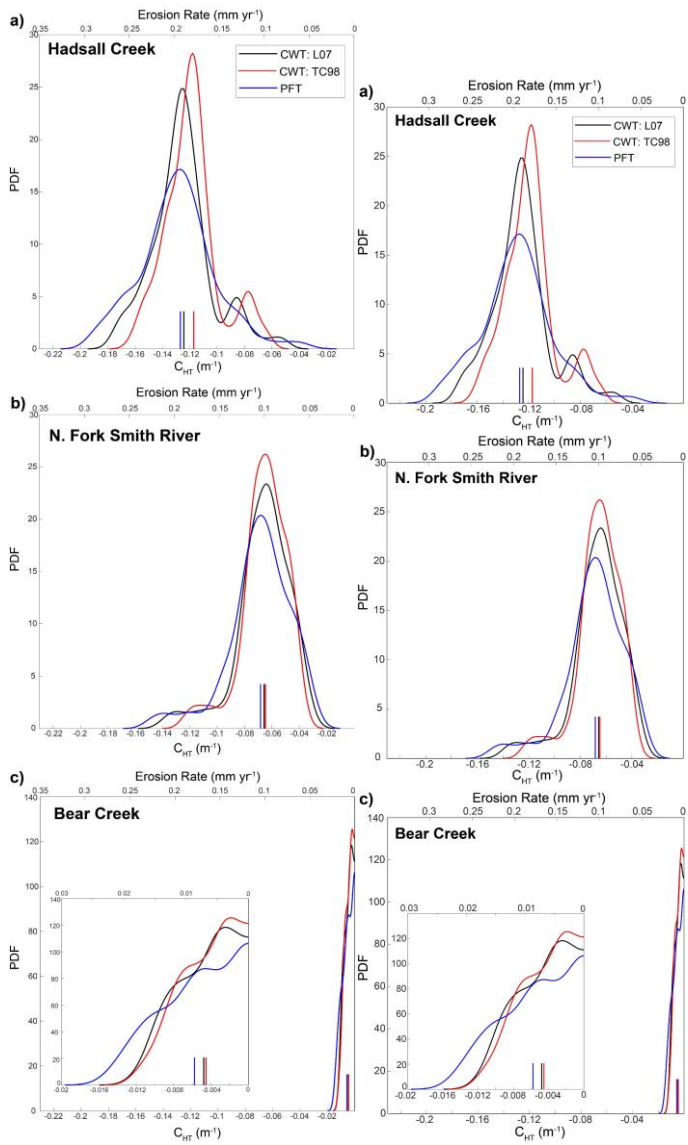


Figure 6: Probability density functions of C_{HT} (bottom x-axis) and erosion rate calculated using Equation 1 (top x-axis) for the representative hilltop at each OCR field site. See Fig. S1 for all mapped hilltops version. Note agreement between each C_{HT} calculation method. Further, note dramatic variability in C_{HT} between sites (all panels use same x-axis; inset in panel C more clearly displays distribution of C_{HT} at Bear Creek). Small vertical lines at bottom of each panel represent the mean of the plotted distribution (Table 2). Note that positive C_{HT} values are not permitted in the output PDF (C). [L07: Lashermes et al. \(2007\)](#); [TC98: Torrence and Compo \(1998\)](#).

920
|
925

930

935

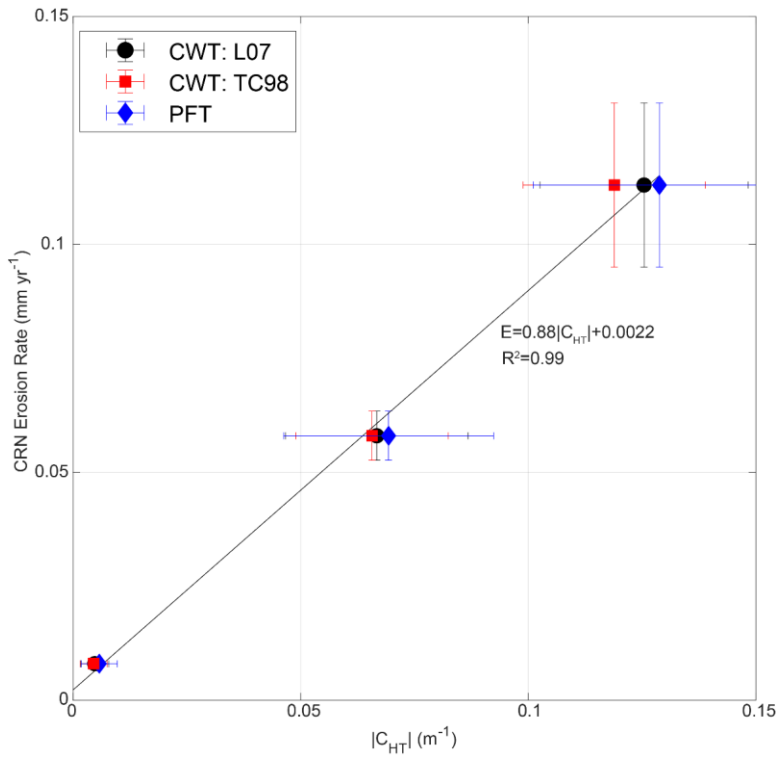
940

945

950

955

960



965

Figure 7: CRN erosion rate vs C_{HT} . CRN erosion rates for Bear Creek (slow E), NFSR (moderate E), and Hadsall Creek (fast E) against the absolute value of C_{HT} for the representative hilltop in each catchment. Filled symbols are mean E and C_{HT} values and errorbars correspond to the standard deviation of C_{HT} and external uncertainty in CRN erosion rate measurements (Table 1, 3). Note that errorbars may be smaller than the size of the mean symbol for Bear

970 Creek samples. [L07: Lashermes et al. \(2007\)](#); [TC98: Torrence and Compo \(1998\)](#).

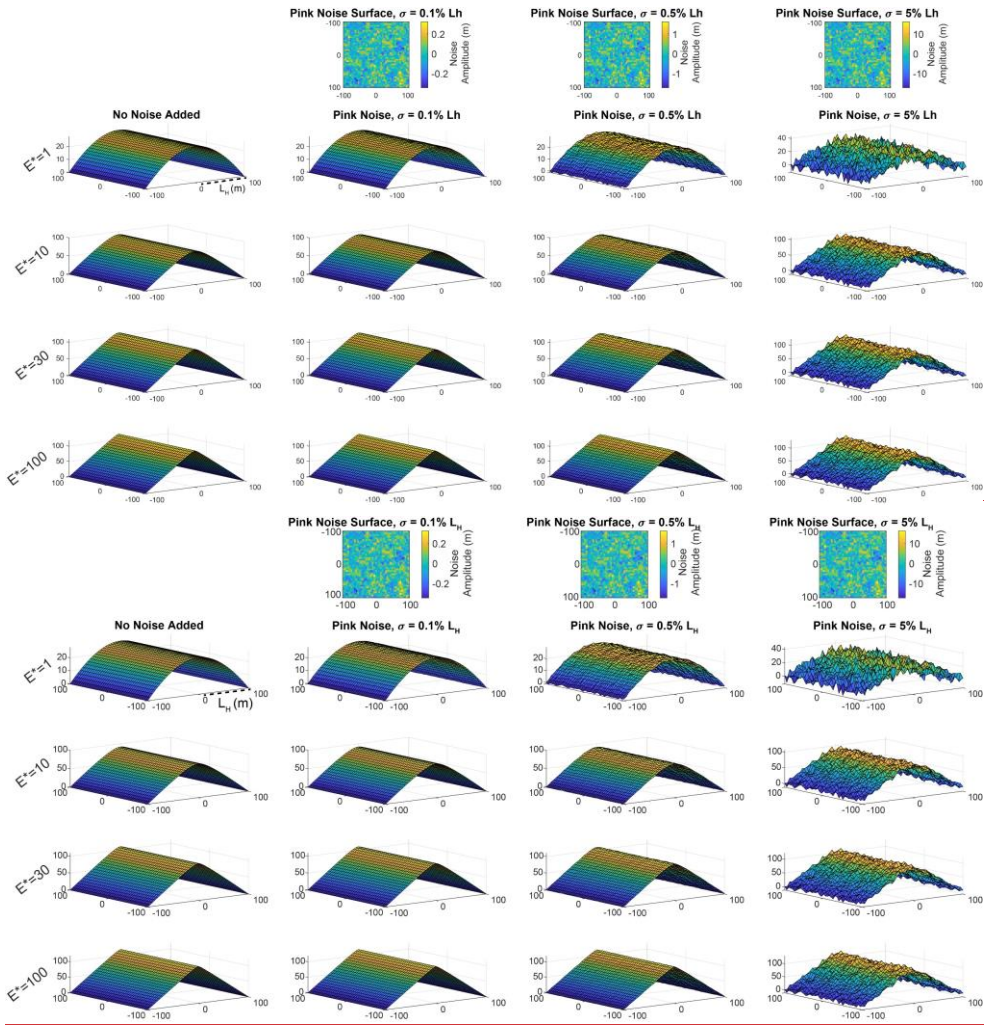
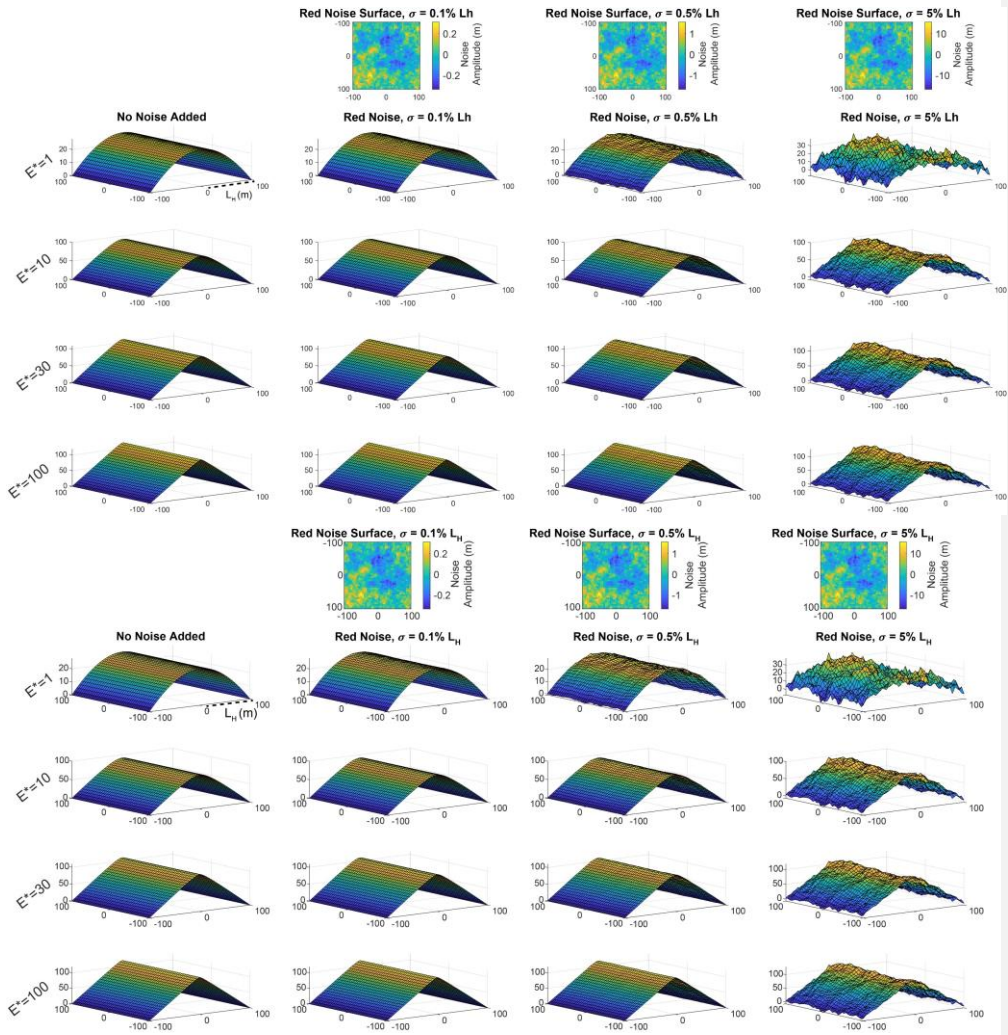


Figure 8: Synthetic hillslopes constructed using Equation 11. Upper row shows pink noise surfaces that are added to the original hillslope form (left column); yellow colors correspond with positive deviations from the hillslope (convex noise) and blue with negative deviations (concave noise). Each row of hillslopes corresponds with range of dimensionless erosion rates, from $E^*=1-100$. Note the increased prominence of planar hillslopes as E^* increases; the z-axis on each plot may differ. Noise does not vary with E^* ; thus the magnitude of noise relative to hillslope relief is more visually apparent at lower E^* (See $\sigma=5\% L_H$ column for clear example). Note that all results in Fig. 10C, G, K, and O correspond with the third column here ($\sigma=0.5\% L_H$). See supplemental for corresponding figures for $\sigma=0.1\% L_H$ and $\sigma=5\% L_H$ cases.

980

985



990 **Figure 9: Synthetic hillslopes constructed using Equation 11. Same as Fig. 8, but with red noise added (see supplemental for white noise example). Upper row shows red noise surfaces added to the original hillslope form (left column); yellow colors correspond with positive deviations from the hillslope (convex noise) and blue with negative deviations (concave noise). Each row of hillslopes corresponds with dimensionless erosion rates from $E^*=1-100$. Note the increased prominence of planar hillslopes as E^* increases. Noise does not vary with E^* ; thus the magnitude of noise relative to hillslope relief is more visually apparent at lower E^* (See $\sigma=5\% L_H$ column for clear example). Note that compared to Fig. 8, the surface noise exhibits longer wavelength noise, made apparent by larger concave and convex regions.**

995 **that all results in Fig. 10D, H, I, and P correspond with the third column here ($\sigma=0.5\% L_H$). See supplemental for corresponding figures for other $\sigma=0.1\%L_H$ and $\sigma=5\%L_H$ cases.**

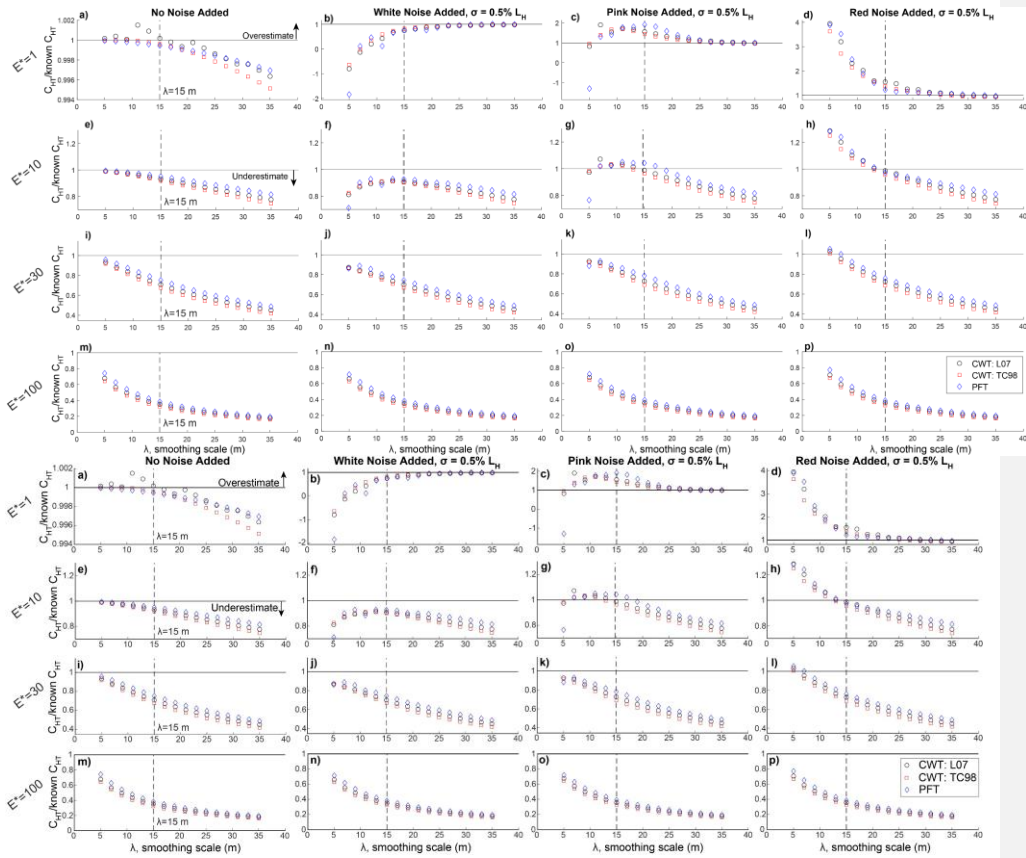
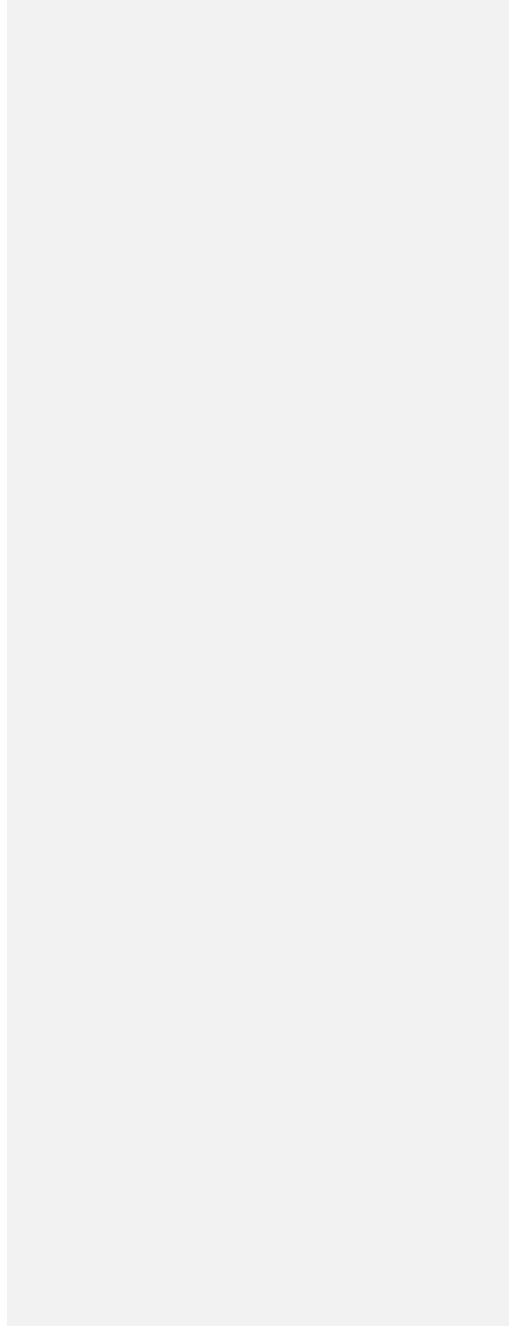
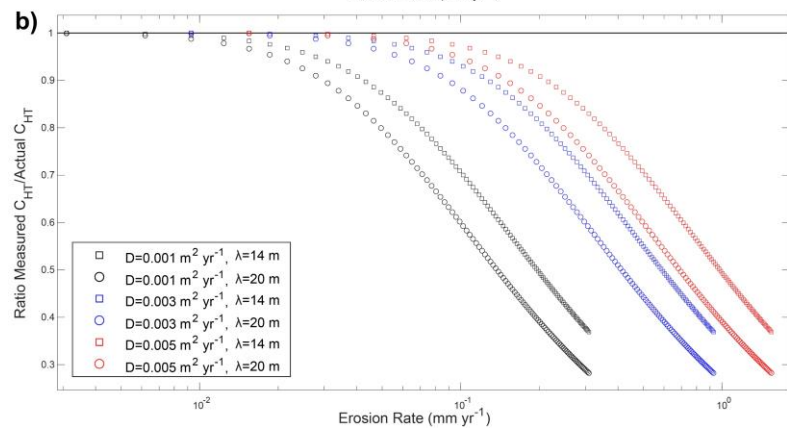
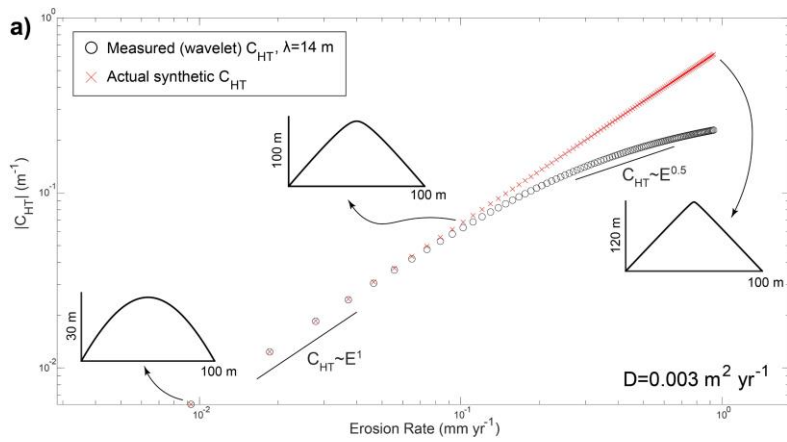


Figure 10: Ratio of C_{HT} of synthetic hillslopes where $E^* = 1, 10, 30,$ and 100 measured at various smoothing scales, λ , with: no noise added (first column), $\sigma = 0.5\% L_H$ white noise (second column), pink noise (third column), and red (Brownian) noise (fourth column). Ratio of C_{HT} is quantified as the quotient of the C_{HT-W} or C_{HT-P} and the model-specified C_{HT} . Black horizontal line in each panel corresponds with where the measured C_{HT} equals the actual synthetic C_{HT} (i.e. ratio=1). Points that plot above the line correspond with locations where C_{HT} is overestimated (sharper hilltops than expected); points that plot below are underestimations (broader hilltops than expected). See text for details but note systematic underestimation of C_{HT} as E^* increases, even for the surface with no added noise. Dashed vertical line indicates $\lambda = 15$ m. Note that y-axis differs between $E^* = 1$ plots. [L07: Lashermes et al. \(2007\)](#); [TC98: Torrence and Compo \(1998\)](#).

|





1015

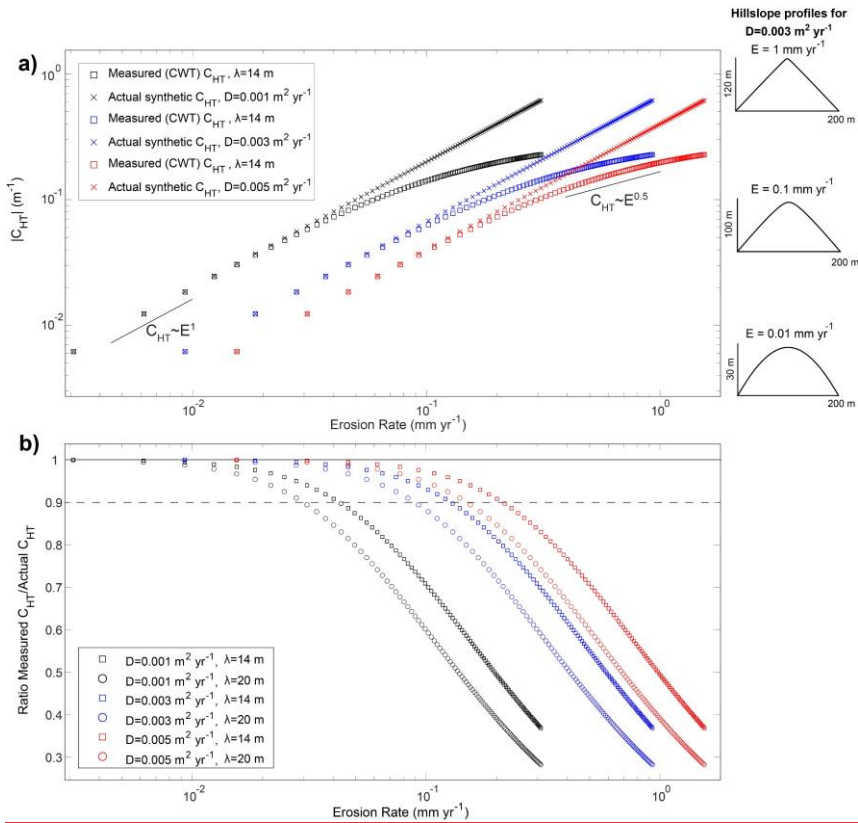


Figure 11: A) The absolute value of C_{HT} plotted against erosion rate for synthetic hillslopes constructed for $E^*=1-100$, corresponding to erosion rates of $\sim 0.01-1$ mm yr⁻¹ for diffusivities ranging from (assuming $D=0.001-0.0053$ m² yr⁻¹, $\frac{\rho_s}{\rho_r}=0.5$). Red crosses correspond with the actual C_{HT} for each synthetic hillslope constructed for a given E^* . Black squares are C_{HT-w} , using the L07 λ definition. In this case $\lambda = 14$ m. Note the linear relationship between C_{HT} and erosion rate at small erosion rates, in agreement with Equation 1. At $E > 0.08$ mm yr⁻¹ as erosion rate increases, the relationship between measured C_{HT} and E is no longer linear but could be potentially expressed as a power law. The erosion rate at which this deviation occurs is visualized in panel B. An example square root relationship is plotted at these erosion rates for reference (Gabet et al., 2021). Note example synthetic hillslope profiles (for $D=0.003$ m² yr⁻¹) spanning the range of erosion rates on right side of panel (y-axes of profiles differ). B) Ratio of measured C_{HT} and the actual model-defined C_{HT} for synthetic hillslopes constructed for $E^*=1-100$ using a range of diffusivities ($D=0.001-0.005$ m² yr⁻¹, $L_H=100$ m) and measured with $\lambda=14$ m (same as panel A) and $\lambda=20$ m. For each case, the measured C_{HT} deviates

from the known value as erosion rate increases. The erosion rate at which this deviation occurs depends on diffusivity and smoothing scale, λ . Dashed line corresponds to where C_{HT} is underestimated from the true value by 10 percent.