

Morphodynamic styles: characterising the behaviour of gravel-bed rivers using a novel, quantitative index

William H. Booker¹ and Brett C. Eaton¹

¹Department of Geography, University of British Columbia, Vancouver, BC, Canada

Correspondence: William H. Booker (william.booker@alumni.ubc.ca)

Abstract. The assessment of river channels widely focusses on using channel form to identify channel character, but ~~fail~~fails to capture the more nuanced variations of morphodynamics without the analysis of process. This paper presents a method using an index of channel behaviour, the throughput ratio (ζ), which is calculated from morphologic change and sediment transport, and explores the viability of inferring process from channel form to act as an indicator of channel behaviour. Two experiments using the same initial width, slope, discharge and grain size were used to demonstrate the effectiveness of this method in representing different morphodynamics. In one experiment the channel was allowed to laterally deform, whilst the other had ~~unerodible~~inerodible elements placed at its boundaries. As a result the experiment with mobile banks widened and reduced sediment transport to zero, whereas the fixed bank experiment— unable to decrease its shear stress— continued to output material. In both, the rate of morphologic change tended to zero despite their marked differences in sediment transport over time. The differences in evolution are due to the differences in process available to each channel despite ~~a starting~~an initial similarity in bed mobility and their gross similarity ~~in~~of a meandering planform. The throughput ratio allows new representations of the temporal and spatial patterns of the morphodynamics, providing additional measures with which to analyse the processes acting in river channels.

1 Introduction

As technology has developed, data is now more readily available and in greater quality than it has ever previously been. Inspired by Strahler (1952), coupling this quantitative revolution with a shift toward process-based understanding, morphodynamic research has expanded in both its breadth and depth (e.g. Rust, 1972; Fenton and Abbott, 1977; Desloges and Church, 1989; Abrahams et al., 1995; Wheaton et al., 2013; Hardy et al., 2016). However, there has been a concomitant fragmentation of research themes and an increased focus on isolated processes from one another as dataset sizes increase. For example, the study of sediment transport without consideration of reach scale morphodynamics (e.g. Wilcock, 1993; Ancey et al., 2006; Hassan et al., 2020) ~~ignores~~may not fully realise the feedbacks between sediment transport and channel ~~forms~~morphologic units such as riffles, pools and bars that ~~influence~~mediate morphodynamics (Schumm, 1977, 1985; Church, 2002; MacKenzie and Eaton, 2017; Dhont and Ancey, 2018; Booker and Eaton, 2020). The coupling between form and process is an intrinsic characteristic of fluvial systems (Ancey, 2020), and determines the suite of morphodynamic behaviours that can arise. Therefore the absence

25 of large scale channel forms in most studies of sediment transport research makes the application of such studies to natural systems difficult.

A similar trend has emerged within riverine classification. From Strahler's call to arms emerged the first quantitative attempts at grouping channels according to their process domains (Leopold and Maddock, 1953; Lane, 1957). To date, many combinations of system-representing metrics have been employed in the differentiation of channel types (see Buffington and Montgomery, 2013). A major criticism of attempts to categorise channels in this manner is that they frequently do not explicitly consider process (Montgomery and Buffington, 1997). The hierarchical system of Rosgen (1994), for example, employs an organisation of channels by morphology for easier management and inference of behaviour using metrics ~~derivative of derived from~~ channel form such as fish habitat availability and flow resistance. ~~This style of classification is tremendously appealing within management contexts given its quick fieldwork component, easy-to-use framework and claims of wide applicability, and has seen widespread use in river management.~~ The emergence of feedbacks between form and process, and the highly non-linear nature of sediment transport, renders such frameworks as difficult to justify when their focus is on the state of the channel rather than the processes actively shaping it. Indeed, it is the patterns of sediment transport and bed deformation that form the morphodynamics of a channel (Church and Ferguson, 2015), and thus provide the key to analysing the behaviour of fluvial systems.

~~River channels operate using both discrete and overlapping process domains. All rivers undergo sediment transport, erosion and deposition but the spatial and temporal manners in which a channel conveys sediment has two important axes of variation. Primarily, the variation between channels occurs through the inclusion, and exclusion, of processes such as The primary axis of variation in river channel behaviour is the variety of processes available. For example, a scaled, physical model of sediment transport operating at one grain's width (e.g., Ancy et al., 2006) only has available to it the motions of the grains and their interactions with the bed. In contrast, highly complex systems such as forested mountainous streams may have~~ vegetation (Vargas-Luna et al., 2015), jamming (~~Zimmermann et al., 2010~~) and flow bifurcation (Ashmore, 1991). ~~This base level separation gives rise to different styles of morphodynamics that frequently coincide with systems of classification such as the organisation into labile, transitional and threshold channels in accordance with process (Church, 2006). Secondary to this, the individual evolution of a particular channel and its antecedent conditions influences the behaviour of a channel as it compares to similar types of channels; a distinction that is difficult to make without a greater understanding of the process feedbacks available from sediment and wood (Montgomery et al., 1996; Zimmermann et al., 2010) and flow bifurcation (Ashmore, 1991) influencing the movement of sediment and deformation of the channel boundary. This behaviour is also mediated by the specific life histories of the channel in question, a facet that static, form-based analyses may not capture.~~

~~We~~ Although process is often conveyed through form based metrics such as sinuosity we contend that, in order to improve our understanding of rivers and their behaviour, new attempts must be made to explore channels within the context of process ~~rather than form~~ by adding new tools to the analytical arsenal of morphodynamics. Rhoads (2006) identified a need for a primacy of process within geomorphology, in place of the "mechanistic materialism" favoured by Strahler. Borrowing this focus on process, already seen as key in the description of channels (Montgomery and Buffington, 1993, 1997), we seek to develop a framework for analysing high resolution data to more directly study and understand the behaviour of channels. This work will

60 [act as supplementary to the](#) Previous work has identified an association between morphologic change and sediment transport (Exner, 1925; Neill, 1971; Ashmore and Church, 1998; Church, 2006) that we will use to develop a suitable quantitative index of process.

This paper offers a conceptual framework designed to provide a quantitative representation of the processes affecting channel form, that will compliment existing indices of form itself. In particular, this paper develops a simple index relating sediment
65 output to morphologic activity termed the “throughput ratio”. This index is then used to explain and track the evolution of two different experimental systems. This approach is then spatialised to provide an additional point of comparison between these styles of morphodynamics. Finally, the ~~implications of the methodology~~ [use case of this methodology and its limitations with respect to data collection](#) are explored.

2 Theoretical Basis

70 An intuitive relationship exists between the movement of material and presence of bed forms. Whilst Popov (1962) is cited as the first formal presentation of the idea, Neill (1971) proposed a numeric ~~association~~ [association](#) between transport lengths of sediment and morphology in a meandering stream. This formulation states that the erosion of material from banks is associated with the deposition of material at the next point bar, and that the average transport distance of material corresponds to half the wavelength of the bar spacing (Figure 1). The association of characteristic zones of erosion and deposition is, in the case of
75 Neill (1971), based on the observations of patterns of sediment movement in laboratory meander models (Friedkin, 1945).

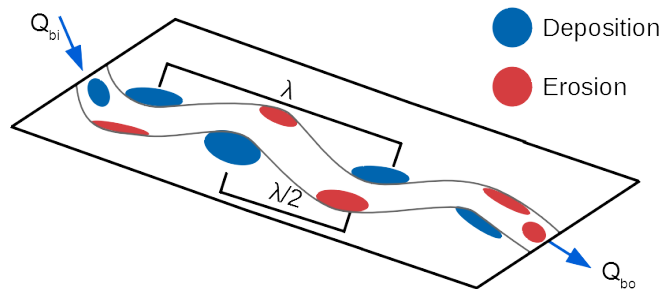


Figure 1. Conceptual basis of the morphologic method. λ corresponds to the wavelength between successive zones of deposition, and thus $\lambda/2$ corresponds to successive zones of deposition and erosion. Q_{bi} and Q_{bo} are the input and output discharges of sediment through this reach.

Neill’s model acts as an end member for a system where sediment supply is derived solely from deformation of the bed and banks, comprises sequential cells, and the path length of material is $\lambda/2$ (half the wavelength of bar spacing). Whilst there is an association between morphology and particle transport length, the influence is stronger over longer downstream distances than shorter (Ganti et al., 2010) and this assumption neglects those events that cause non-wavelength associated transport, which

80 may emerge over the course of a constant discharge as transport paths evolve (~~Pyree and Ashmore, 2005~~) in response to changes of the bed state (Pyree and Ashmore, 2005) or due to large scale channel reworking (Kasprak et al., 2015). Furthermore, the assumption that a zone of erosion is followed by a sequential zone of deposition with the same volume of change precludes the occurrence of throughput and the transmission of sediment to other cells downstream; discharge exerts a natural influence on the travel distance of bed load as deposition of material likelihood decreases (Hassan et al., 1992; Booker and Eaton, 2020),
85 further decoupling the direct relationship between morphologic change and output (Eaton and Lapointe, 2001).

For a reach with no net volumetric change ($\Delta V = 0$), the input and output of sediment into a reach of length L_r must also be equal to each other, free from non-fluvial additions of material. It follows that the volumes of erosion (V_e) and deposition (V_d) would also be compensatory to produce ~~a net change of zero in sediment transport~~ no net volumetric change. Therefore, one observes two different volumes of sediment transport: the transport volume; given by the product of transport rate and time, and
90 the morphologic exchange volume (M); the absolute sum of the volumes of erosion (~~V_e~~) and deposition (V_d) and deposition. However, for a fixed transport volume there are myriad exchange volumes that may sum to $\Delta V = 0$, varying between extremely low and high values of M . Those channels of $M = 0$ act as pipes through which supplied material is moved but the boundary remains unchanged, whereas those with $\lim_{M \rightarrow \infty}$ have highly active surfaces that greatly and rapidly change in elevation.

We define a ratio of sediment transport to morphologic change as the throughput ratio (ζ) over a period of time (Δt);

$$95 \quad \zeta = \frac{Q_b \Delta t}{(|V_e| + |V_d|)(1 - p)} \quad (1)$$

where

$$Q_b = \frac{Q_{bi} Q_{bo}}{2} \quad (2)$$

Q_b is the average volumetric transport rate into (Q_{bi}) and out of (Q_{bo}) ~~a reach over a period of time (Δt)~~, and p is porosity. Or more simply;

$$100 \quad \zeta = \frac{Q_b \Delta t}{M}, \quad (3)$$

where M is the absolute sum of volumetric channel change, corrected for porosity. This ratio produces a metric for the relative change in behaviour of morphodynamics due to changes in sediment transport and bed deformation, and the spatial and temporal variation thereof. To provide a brief example, consider the transport and storage zones that characterise wandering rivers
; according to Desloges and Church (1989). The transport zones are thought to convey large volumes of supplied material but
105 experience minimal bed deformation, resulting in low to zero values of M and high values of Q_b . If this behaviour is present, the throughput ratio ζ must be high, indicating low levels of morphologic activity in relation to the transport rate. ~~In contrast, Desloges and Church (1989) argue that storage zones of a wandering channel~~ Storage zones, on the other hand, typically experience high rates of morphologic activity as they source material from their bed and banks during periods of instability. The active and high rates of deformation of the boundary would cause compensating differences in M , reducing the ζ parameter.

110 Using the throughput ratio ζ would provide the quantitative framework necessary to validate the inferred process-form relation in these two contrasting ~~types of reaches. In doing so, ζ provides a tool with which one can evaluate the role of~~

3 Methods

115 In order to assess the style of morphodynamics exhibited by a system, both sediment input and output must be known alongside elevation data of the bed surface. Whilst field studies are capable of producing such data (Wheaton et al., 2013; Williams et al., 2015), quickly testing different conditions necessitates the use of laboratory obtained data. Both of the following experimental datasets were conducted using the Adjustable Boundary Experimental System (A-BES) in the Geofluvial Lab at UBC as Froude-scaled models at 2% gradient. Two experiments were chosen as examples of different morphodynamics and subsequent
120 styles of deformation. The first dataset was used to develop the methodology for this throughput ratio, and comes from experiments with a fixed width and ~~uneredible~~inerodible banks, henceforth known as the fixed bank experiment. These experiments have been published elsewhere testing a multi-scalar roughness decomposition (Adams and Zampiron, 2020). The dataset used to test the applicability of the concept with differing boundary conditions came from experiments using deformable banks (MacKenzie, 2019), henceforth known as the mobile bank experiment. Both sets of experiments were conducted using the
125 same grain size distribution, with material ranging from 0.25 to 8 mm, a D_{50} of 1.6 mm, D_{90} of 3.9 mm and a D_{95} of 5.1 mm. In addition, both experiments were conducted using the same discharge (1 L s^{-1}) and same initial channel width (0.3 m).

Data collection methods differed between the two experiments. The mobile bank experiment collected elevation data with a laser scanner to produce 2 mm x 2 mm resolution DEMs of the bed surface (MacKenzie, 2019). In contrast, the fixed bank experiment used structure from motion photogrammetry to produce 1 mm x 1 mm resolution DEMs (Adams and Zampiron,
130 2020). In both, flow was ceased and water drained from A-BES prior to scanning the exposed bed surface. These elevation data collection methods produce repeatable, fast and reliable ways to capture the bed surface ~~,enabling data capture at a scale, quality and rate that previous methods preclude from the analysis used here, hence the timing of this technique's development~~at high resolution. The scan schedule also differed between the mobile and fixed bank experiments. Scans in the mobile bank experiments were conducted every 15 minutes, alongside measurement of sediment captured in the sediment trap, in order
135 to consistently capture data through the experiment. In contrast, the scans in the fixed bank experiments were run at four repetitions each of 5, 10, 15, 30, 60 and 120 minute intervals designed to produce a saturation of observations during the initial perturbation and deformation stages. Sediment was emptied from the trap in accordance with the scans at 5 and 10 minute intervals, and 15 minute intervals thereafter in phase with the scans at 15 minute or greater intervals. Sediment output in both sets of experiments was recirculated as input over the next sediment collection cycle.

140 We have provided sample code to calculate ζ for a DEM alongside the following general methodology (Fig. 2). In order to produce an estimate of ζ , four quantities are needed in addition to the surfaces of interest: total sediment input and output between the timesteps, sediment density (ρ) and porosity. The average of the sediment input and output masses are taken and converted to a volume of transported material (Q_{bv}) through division by the product of bulk density (ρ) and porosity

$$Q_{bv} = \frac{Q_{bi} + Q_{bo}}{2} \frac{1}{\rho p}. \quad (4)$$

145 The morphologic activity is calculated as the sum of the absolute change between the two surfaces given by their DEM of differences (DoD);

$$DoD = DEM_2 - DEM_1, \quad (5a)$$

$$M = \Sigma |DoD|. \quad (5b)$$

Following this, a value of ζ is estimated for the whole reach using Q_{bv} and M . Given the high resolution of the data, we are also afforded the opportunity of investigating the fine scale variation of morphologic change in the analysis of ζ . Analysing at the resolution of the DEMs produces a series of minimum-width cross sections of channel change whose number equals the number of pixels in the downstream direction. M is calculated for each channel cross section so that ζ may be spatialised under the assumption of an even-idealised, constant distribution of Q_{bv} along the length of the channel. Using a ratio of this evenly expected distribution to the observed cross sectional M values, we calculate a ratio adjusted ζ (ζ_{adj}) value;

$$155 \quad M_e = \frac{M}{n}, \quad (6a)$$

$$\zeta_r = \zeta \frac{M_e}{M_o}, \quad (6b)$$

$$\zeta_{adj} = \zeta \frac{\zeta_r}{\zeta_r}, \quad (6c)$$

where n is the number of cross sections, M_e and M_o are the expected and observed values of M , and ζ_r is the product of ζ and the ratio of M_e and M_o .

160 **3.1 Uncertainty**

Given the difference in data collection methods, the two experiments have substantially different sources of uncertainty. In order to estimate the uncertainty in the photogrammetry derived DEMs in the fixed bank experiment, we evaluated the variation in position of a fixed, common point throughout the series of DEMs. The variation in the x, y and z dimensions of a single point thus provided an estimate of positional uncertainty of each DEM (i.e., potential x, y and z offset due to data processing). By

165 repeating this at the upstream, middle and downstream extent of each DEM we can produce an estimate of the typical range of positional variance over a dataset. To estimate the uncertainty throughout the data the average values of variation in the x (5 mm), y (2 mm) and z (0.5 mm) dimensions were used as offsets to calculate variation in M due to DEM positional variance for each DoD. That is, each DEM was translated by the variation in each dimension in both positive and negative directions. DoDs were calculated from the ‘potential’ DEM surfaces to calculate the range of variation in M . The median value of these

170 variations is used to characterise the uncertainty in DEM products, and ranges from 1% to 16% with a median value of 6%. Sediment uncertainty comprises ± 0.1 kg per reported mass, resulting in 1.5% to 10% uncertainty.

The laser scan based elevation models generated in the mobile bank experiment have a greater degree of precision with no variation in cross-stream or vertical position due to a fixed rail system. Hence, positional variation in only in the downstream direction at an uncertainty of 1 mm precision error sourced from the stepping motor. The resulting variation in M from

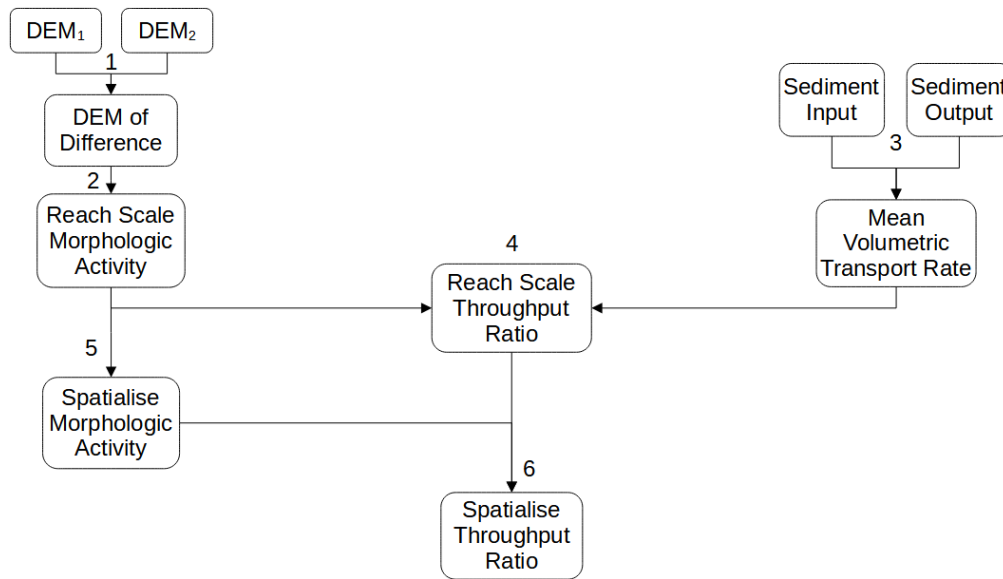


Figure 2. Flowchart representing the methodology used to create ζ . Numbers represent processing stages: 1; surface differencing (Eq. 5a), 2; ~~calculated~~-calculating absolute change at the reach scale (Eq. 5b), 3; volumetric conversion and averaging (Eq. 4) , 4; calculating reach scale ζ (Eq. 3), 5; spatialising M (see Fig. 8) and 6; spatialising ζ (Eq. 6).

175 positional uncertainty ranges from 0% to 11%, with a median of 3%. Uncertainty in sediment output is far lower at ± 0.0001 kg per reported mass, from a far higher precision scale, equivalent to a range of 0% to 0.5% uncertainty.

4 Results

The two experiments produced greatly differing morphology and morphodynamics (Fig. 3). The fixed bank experiment developed a series of alternate bars of the kind observed in Lisle et al. (1991), Dhont and Ancey (2018), and Redolfi et al. (2020).
 180 In this channel, pool-bar units were present throughout the experiment as material cycling through the system was transmitted along the thalweg with limited exchange with the bed. The morphology in the channel remained largely the same through the experiment, ~~deepening~~-which deepened the pools and ~~retaining~~-retained the pool-bar couplets established early during the experiment. There ~~is~~-was some variation in the upstream and downstream extents of the pools and bars during the experiment, as they ~~erode and deposit~~-eroded and deposited in response to local variations in flow direction. In contrast, the mobile
 185 bank experiment ~~forms~~-formed a mildly sinuous channel with comparatively topographically subdued pool-bar couplets with a greater sinuosity than those found in the fixed bank experiment. Initially there ~~is~~-was an overall widening of the channel and construction of a thalweg and deposition of bars with a slight preference for deposition at the mouth and erosion at the outlet. The recirculating feed ~~deposits~~-deposited a large proportion of this load at the upstream end of the channel, causing substantial, local widening. The morphology continued on this trend during the course of the experiment, widening the channel further,

190 depositing more material near the inlet and eroding more material at the outlet. The middle 6m or so of the channel remained relatively stable, with a lower extent of scour and widening in comparison to the upper and lower sections.

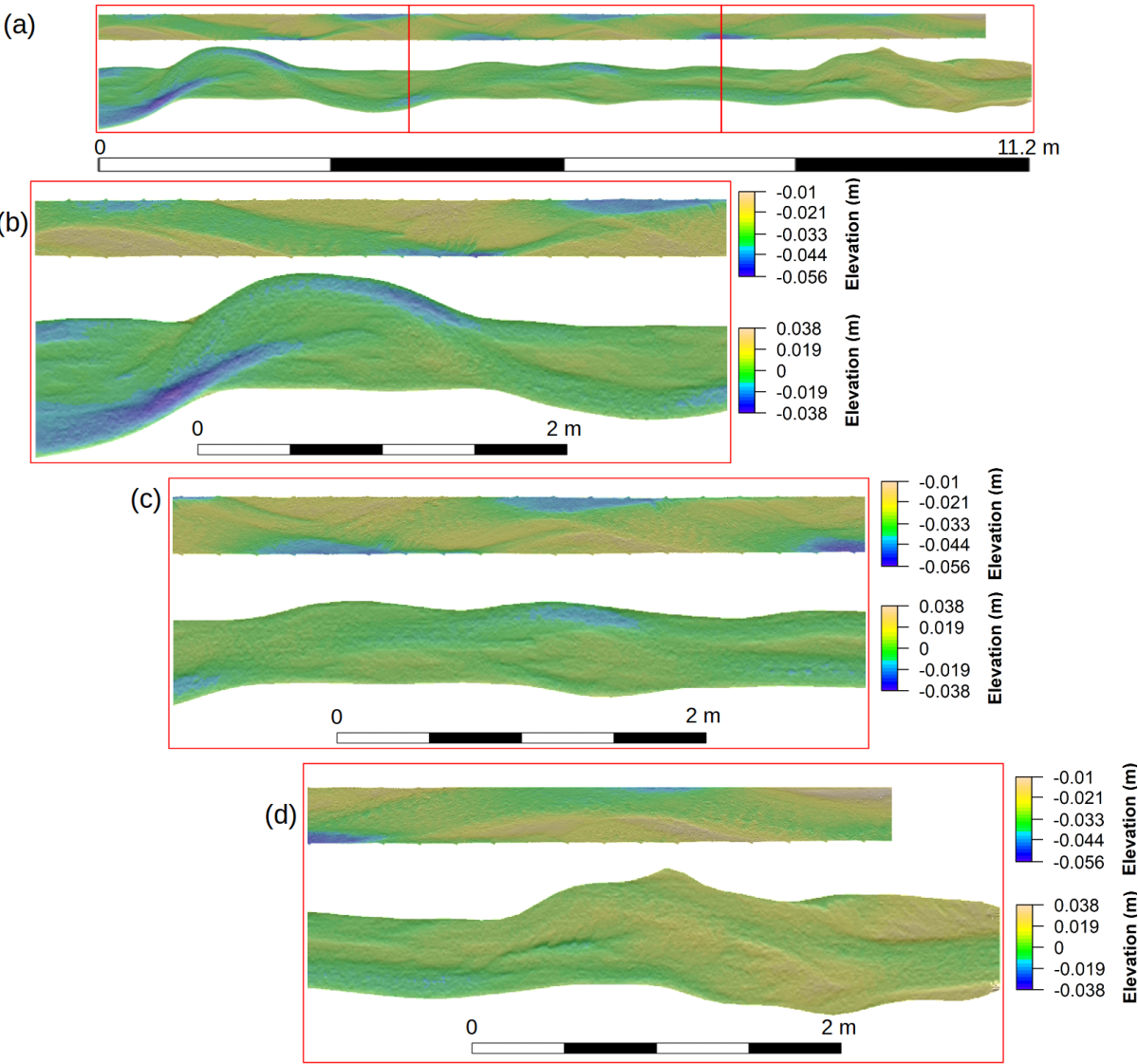


Figure 3. DEMs from the final scan of both the fixed bank (upper) and mobile bank (lower) experiments. Panel (a) shows the full extent of the DEMs, differences in length result from data collection methodologies. Inset panels show enlarged sections of the (b) lower downstream, (c) middle and (d) upper upstream sections of the bed surface. Flow is from right to left.

With the presence of confining elements, the unit sediment transport rate is was higher for the fixed bank experiment by a factor of between 2 and 25 (Fig. 4). The output of material is was highly variable through the course of the fixed bank experiment, with a slight reduction in its average value over time. The output for the fixed bank experiments maintains a

195 ~~relatively consistent~~ mean of $9.0 \pm 0.02 \times 10^{-3} \text{ m}^2 \text{ min}^{-1}$, but ~~has had~~ frequent variation around this value. In contrast, the sediment output of the mobile experiment ~~follows followed~~ a sharp decline over the initial two hours of the experiment before stabilising around a mean of $3.7 \pm 0.001 \times 10^{-5} \text{ m}^2 \text{ min}^{-1}$. That dramatic decrease in sediment output is mostly achieved through a reduction in erosion, as the channel widens, but is in part due to the lack of continued throughput as this material instead accumulates near the inlet.

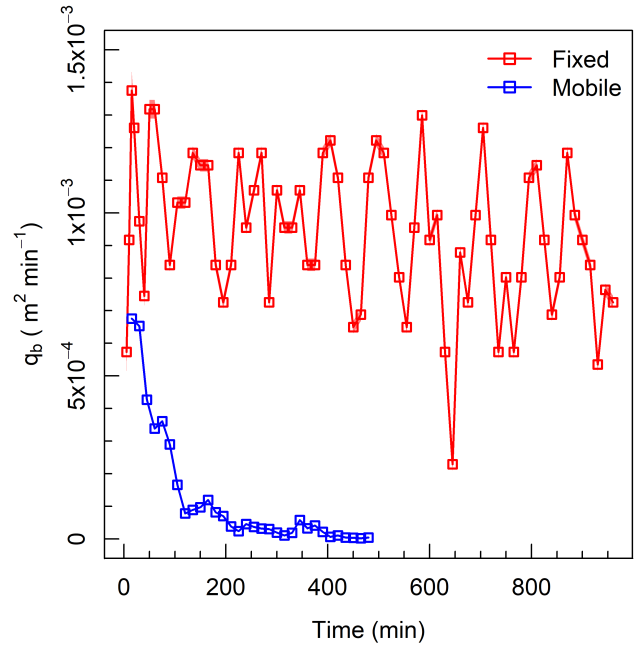


Figure 4. Sediment output rates, given as volumetric rates per unit width.

200 However, the experiments ~~show showed~~ a remarkable similarity in the patterns of volumetric change (Fig. 5). Apart from the first time step, where the mobile bank exhibited extensive erosion, net volumetric change per unit width (Δv) ~~exhibits exhibited~~ the same relation with time. In both experiments, the magnitude of Δv ~~reduces reduced~~ through the course of the experiment, stabilising around zero net change, with continued variation about this trend. In the same vein, both experiments ~~show showed~~ the same gross trend in unit morphologic activity (m) over time. In both the mobile and fixed bank experiments, the maximum
 205 volume of morphologic activity ~~occurs occurred~~ within 30 minutes of starting the run. As in net erosion, this initial peak is then relatively rapidly dampened and asymptotes towards zero, again with some variation about this trend.

One can demonstrate the temporal evolution in behaviour using the calculation of ζ (Eq. 3) which reflects the disparity between two facets of morphodynamics; the material moving within (Q_b) and the work done to a system (M) (Fig. 6). The values and evolution of ζ differ according to the style of bank present in each experiment. For the fixed banks, an initially low
 210 ζ value (<1) ~~exhibits exhibited~~ a sharp increase over the first 400 mins of the experiment, followed by a more gently sloped increase over the rest of the experiment with occasionally substantial changes. The mobile bank experiment instead ~~follows~~

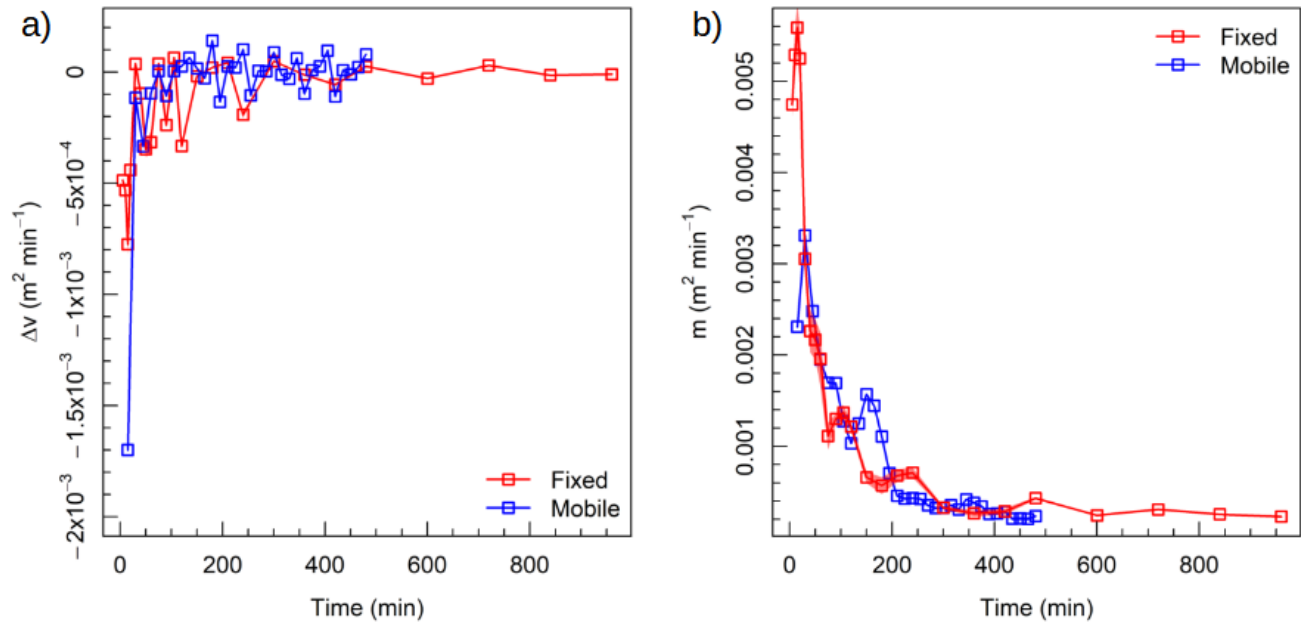


Figure 5. Panel (a) shows the rates of net volumetric change per unit width. Net volumetric change is calculated as the difference between volumes of erosion and deposition between successive DEMs. Panel (b) shows the rates of morphologic activity per unit width. Morphologic activity is calculated as the sum of volumes of erosion and deposition between successive DEMs.

followed a negative trend through the course of the experiment from above-unity to approximately zero; diverging from the trend in the a similar starting value as the fixed bank experiment after 60 to approximately zero, diverging after 30 minutes.

With low values ($\ll 1$) ζ reflects a close association between bed deformation and sediment transport, as little is being output outside of the change occurring to the bed surface. When values are high ($\gg 1$), however, it represents a cycling of material through the system without commensurate change in the surface as material is simply throughput and decoupled from morphologic change. This difference is an accurate reflection of the difference in morphodynamics observed during each experiment. For the fixed bank system that stabilises-stabilised a sediment transport around a mean, rather than being able to reduce it substantially, the commensurate reduction of morphologic activity as the system maximises-maximised its throughput and producing an increasing ζ value. For the mobile system that stabilises-stabilised through a severe reduction in sediment transport rate, a negative relation with time is inevitable as morphologic change becomes progressively localised through time. In addition, the close proximity of the sediment transport values to morphologic change produce ratios that do not exceed 1.5 0.4 for the mobile bank experiment, in comparison to the peak of 8-around 4 found in the fixed bank experiment.

Given the inherent spatial component of morphologic change, there is an opportunity to spatialise Fig. 6 and demonstrate the variability of ζ along the length of the experimental channels. To conceptualise the variability, unit rate morphologic activity is calculated for each cross-section along the length of each DEM (Fig. 2 and Eq. 6c) and their distribution shown in Fig.

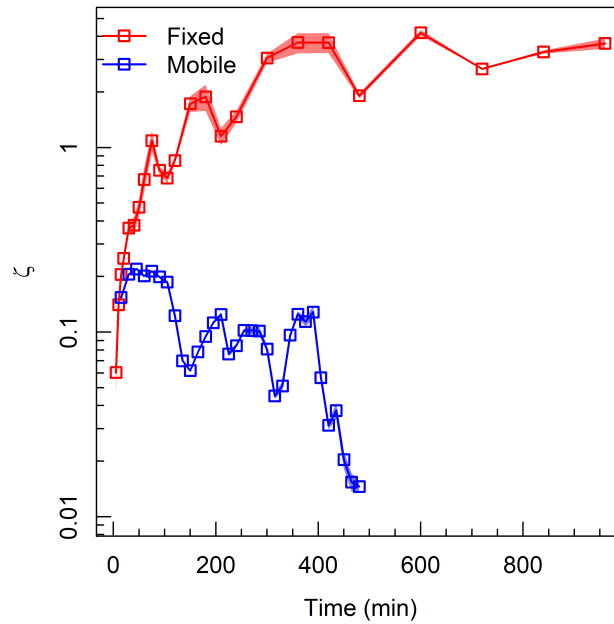


Figure 6. Throughput ratio (ζ) calculated as the ratio of the volumes of sediment transport and morphologic activity.

7. The overall pattern of the fixed experiment is similar to Fig. 5b as the rate of m ~~decreases~~decreased over the course of the experiment, however the median values of the first 60 minutes are much closer with the remainder of the experiment than that implied by Fig. 5b. The median activity of the first 20 minutes is close to subsequent values, but with far greater ranges of variation that also ~~decreases~~decreased over the course of the experiment and especially so after 30 minutes. That is, the magnitude and variation in m within each DEM ~~decreases~~decreased through the course of the experiment and overall morphologic change ~~reduces and homogenises~~reduced and homogenised. There is a positive skew to most of the distributions; most time steps have substantial contributions from few cross-sections that far outweighs the median value. Similar to the fixed bank experiment, m in the mobile bank experiment ~~follows~~followed a decrease from an initially higher median and wider distribution. In contrast, this decrease is not monotonic and instead has two secondary peaks in activity ($T = 150$ and 345 mins). The mobile bank experiment ~~shows~~showed a similar difference to its rates of m in Fig. 5b as the fixed bank experiment, but with a relatively wider range of m values for the first 180 minutes. As in the fixed bank experiment, there is a positive skew to the distribution of m values. The maintenance of skewed distributions show a greater spatial localisation through the experiment, compared to the fixed bank experiment

Four example calculations have been provided in Fig. 8 to Fig. 11. The first of these (Fig. 8) shows the largest variation in m found in the fixed bank experiment ($T = 20$ mins). Change is isolated within this timestep to two discrete zones; the first being deposition downstream of the inlet ($Y' = 0.9$) and the second being bar reorganisation in the lower middle section ($Y' = 0.3$ – 0.5). The pattern of changes in morphologic activity ~~identify~~identified these same zones differently according to whether

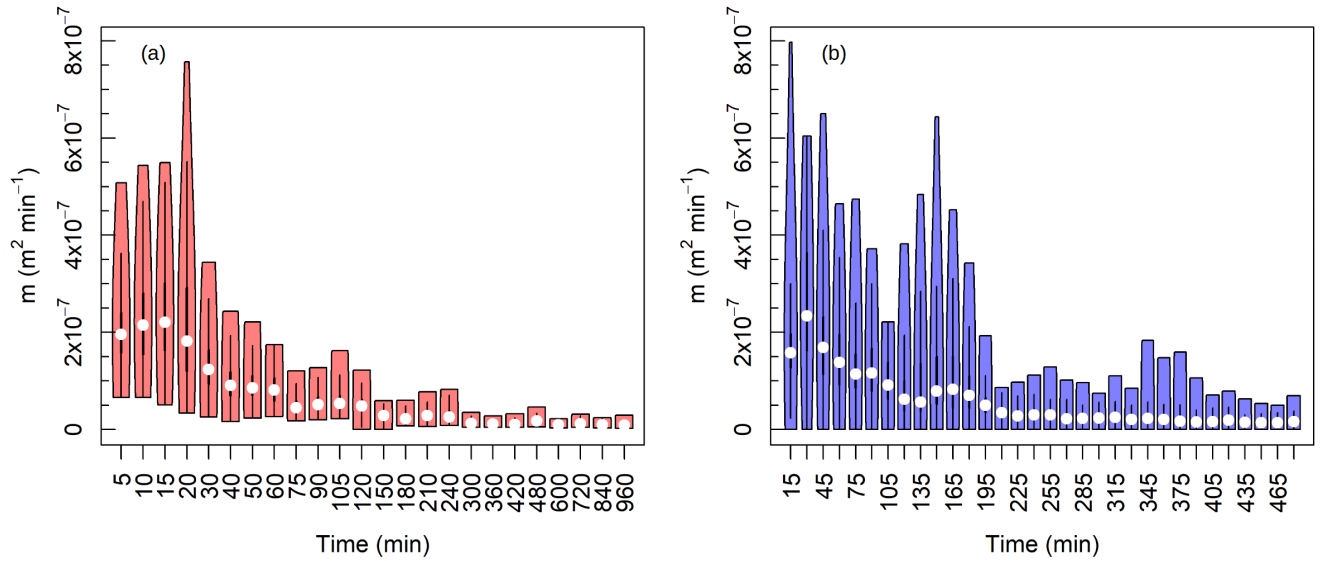


Figure 7. ~~Distribution~~ Violin plots showing the distribution of all-values-every cross-sectional value of morphologic activity for the (a) fixed bank and (b) mobile bank experiments for each DoD. Median values are given by the white point, kernel density by the internal lines and the total range of values by the coloured box.

compensating activity has reduced the volumetric change ($Y' = 0.55\text{--}0.8$) or whether the surface change was low to begin with
 245 ($Y' = 0\text{--}0.1$), which has important implications for the calculation of ζ . ~~As a result the length of the channel can be apportioned as belonging to either throughput or exchange zones (sensu Desloges and Church, 1989) according to a value above or below 1, respectively.~~ For the majority of the length of the channel ($Y' = 0.2\text{--}1$) exchange zones ~~dominate~~ dominated (i.e., a relatively larger volume of M than Q_b) with changes in ζ due to the spatial disaggregation of change. Indeed, ~~between it is only around~~ $Y' = 0.55\text{--}0.8$ 0.07 that ζ ~~exceeds~~ exceeded the throughput threshold ~~on occasion but and otherwise~~ remains below unity on
 250 the whole. ~~It is only in the downstream-most portion of the channel, where channel change is limited, that transport zones are present.~~ Thus, ζ ~~identifies the channel as exchange dominant, but interspersed with zones approaching throughput in the upper half and acting as throughput sub-reaches in the lower 20%~~ identified this reach as primarily exchange driven, only briefly approaching a throughput state briefly at the downstream limit.

The time step with the highest total m value of the mobile bank experiment is shown in Fig. 9. Here, ΔV ~~varies~~ varied
 255 about 0 with a preference for deposition just downstream of the inlet and erosion at the outlet. The pattern of M shows a strong association with the location of the loci where the channel begins to meander, in particular the upstream-most and downstream-most expansions of the channel, and the formation of 4 bends between $Y' = 0.3\text{--}0.7$. Throughout the channel, however, the character ~~is predominantly above~~ was predominantly below a throughput ratio of 1 with peaks in this values corresponding to relatively unmodified sections separating these loci of erosion, ~~i.e. cross-over riffles.~~ It is only at these sites of ~~lateral limited~~
 260 activity that ζ ~~dips below~~ exceeded unity and identifies hotspots of ~~exchange-based behaviour.~~ It is important to note that the

high mean throughput value observed here is due to the highest Q_{bt} and second highest Q_{bo} rates of the experiment, despite the high M values throughput behaviour. Otherwise the channel underwent predominantly exchange based deformation between these two timesteps as internal reorganisation outweighed sediment conveyance.

The time step with the smallest range of m values observed in the fixed bank experiment is presented in Fig. 10. ΔV here shows showed a strong dependence on changes due to the position of the thalweg, with most change being located along the former and current position of the main flowpath. This is localised as an upstream storage of material ($Y' = 0.7-1$) and erosion of the material in the midsection ($Y' = 0.25-0.6$) of the channel. Troughs in M are associated with ΔV values of 0, whilst peaks occur occurred alongside maxima and minima in ΔV . The corresponding threshold ratio shows a system clearly dominated by the throughput of material over deformation of the bed surface, punctuated with zones of even higher than mean ζ where morphologic change has hardly very low rates of M occurred.

Finally, the time step with the most consistently low M values observed in the mobile bank experiment is presented in Fig. 10. Sediment is stored over the length of the channel, however the magnitude of this storage is low and relatively consistent; in particular, variation in ΔV is remarkably small between $Y' = 0.3-0.8$. The consistent nature of this section is highlighted in the distribution of M along the channel following a weak parabola for which $Y' = 0.3-0.8$ is the minima; the upstream and downstream edges have approximately twice the mean value of the centre. The activity surrounding the inlet is was of a higher value but shorter length than that of the more extensive change found near the outlet. The resulting ζ values are tremendously were low, given the very low Q_b value, but shows a distinct increase in the middle reaches compared to the relatively more exchange driven boundaries of the experiment as almost all work done within this reach is representative of very small scale bed deformation that did not lead to sediment output (and due to the prior timestep did not result in sediment input).

280 5 Discussion

The two experimental designs presented in this paper produced greatly differing morphodynamics, and trajectories thereof, in the response of a screeded bed to the imposition of flow. Through the constraint of the channel by unerodible inerodible elements, the fixed bank system evolved into one that transmits its supplied sediment and lacks any ability to reduce its output of material. In contrast, their absence allowed the channel in the mobile bank experiment to widen and greatly reduce the flow depths, enabling a reduction of both sediment transport and further change. This difference is not simply an appeal to the maximum friction factor hypothesis of Davies and Sutherland (1983), that being able to widen will necessarily increase the wetted perimeter as the mobile bank channel converts to a less efficient shape, but one that includes an appreciation for the role of expansion on shear reduction (Simon and Thorne, 1996). The potential range of flow depths is reduced and their average value lower when energy may be expended on channel widening and true thalweg meandering rather than concentrated against fixed banks and allowed to scour. As a result the final behaviour and physical assemblage of the bed elements represents the cumulative effect of process manifest upon the channel and its constituents.

This difference in morphodynamics is solidified when the analysis of the channel is focussed on process (i.e., sediment transport) and process-from-form (i.e., metrics derived from surfaces of change). River channels may share a great deal of

similarity in given characteristics but may diverge in stable state, given the non-linear nature of their dynamics and feedback
295 based mediation of character (Phillips, 1992, 2003). This divergence in behaviour is a fundamental property of form-process
interactions, and one that is impossible to trace without an explicit analysis of process; especially so considering the myriad
processes by which similar forms may emerge. Thus in the analysis of channel behaviour a focus on the form, or being, does
not convey information without the inclusion of process, or becoming (Rhoads, 2006).

The final form of the channels' "being" in the experiments presented herein is simply a manifestation of the difference in
300 becoming and processes available to the channel due to lateral deformation. When the channel is allowed to laterally widen, the
initial phase of morphology formation is achieved but there is a tendency towards ~~zero in~~ decreasing and eventually stabilising
transport as the channel's ability to continue to do work is decreased. Concurrent with an increase in the width-depth ratio is
a reduction in shear stress and the ability to entrain material; any further deformation of the boundary occurs at a slower rate
because there is the same impulse of energy spread out over a larger area, reducing its effectiveness. This change in channel
305 shape removes two sources of perturbation from the system. Primarily, an inability to entrain material through a reduction
of shear stress reduces the channel's ability to do further work, having adjusted to a lower state of change for this specific
impulse of energy. Secondly, the reduction of sediment entrainment reduces the supply of sediment to sequential time steps.
Ordinarily the supply of sediment provides a source of channel deformation through deposition as bars or interaction with
bed material, however in the mobile bank experiment supply was instead rendered useless through localised deposition near
310 the inlet. In contrast, although further deformation was also reduced in the fixed bank experiment the continued transmission
of sediment due to a lack of shear stress reduction below a disentrainment threshold (Reitz and Jerolmack, 2012) caused a
transition into a purely throughput dominated system. Thus the potential for continued change is removed by the deformation
achieved during lateral expansion of the channel boundary.

The use of these analyses presented here are meant as supplementary to existing methods in order to develop a full picture of
315 morphodynamics. Given their calculation using commonly collected data (sediment transport and surface elevations) this suite
of tools offers an insight on the processes happening within a channel. Centralising the study on what is happening at a gross
scale (Fig. 6) allows for a general analysis of the pattern of change, whilst a finer degree of classification is achievable through
a spatialisation of this method (Fig. 8–11). ~~These tools provide~~, providing a quantitative lens through which one may view
the inherently qualitative process of surface change. In identifying patterns of change we may assign classifiers, such as the
320 throughput and storage zones of Desloges and Church (1989), according to the interaction between net and absolute volumetric
change. For example, in Fig. 9 areas of compensating activity result in zero (or near zero) net change that varies above and below
the throughput/exchange threshold as riffles acted to route sediment between the active erosional and depositional areas. In
doing so, additional explanatory power is given to more traditional views of process, such as the grounding of geomorphology
in the principles of mechanics (e.g. Strahler, 1952).

325 The strength of this process driven approach (*sensu* Whitehead, 1929) is the assignment of behaviour to an action, rather
than the outcome of the action. In doing so, there is a more direct linkage between the processes available to a channel and
a classification according to those processes. Successful incorporations of process improve the efficacy and dynamism of
classificatory systems. For example, the identification of threshold behaviour in conjunction with an association of certain

forms with process informed much of ~~the~~ Schumm's work on channel classification (e.g. Schumm, 1977, 1979, 1985). An
330 appreciation for these nuances of process between and within channel types can inform management of rivers as well as their
study.

Whilst data is perhaps this method's greatest strength, it may act also as its greatest ~~deterrant~~barrier to application. Although
sediment transport data and surface elevations are commonly collected, each of these are associated with numerous issues
namely the difficulty with which one must collect this data during the periods with the highest rates of morphologic activity. In
335 addition to which, tracking the evolution of the morphodynamic styles benefits from high frequency data, potentially limiting
application in infrequently surveyed areas. This methodology thrives off of the regular capture of both sediment transport
and elevation data in concert, enabled here through the use of an experimental abstraction. Certainly then, this is limited in
application to heavily instrumented or frequently visited field sites. However, the improvement in data collection is beginning to
offset the elevation data requirements. The advancement of photogrammetry and the proliferation of small UAV based LiDAR
340 has already improved data collection in both experimental and field studies (Williams et al., 2015; Morgan et al., 2017; Kellner
et al., 2019; Leduc et al., 2019; Resop et al., 2019). Thus the data gap between what is feasible and what is necessary for this
approach in the field is closing, and has already closed within a laboratory context.

6 Conclusions

This paper presents a new metric to represent morphodynamics that is calculated from the volumes of change and sediment
345 transport of a given reach. This methodology is rooted in the apparent relationship between morphology and sediment transport,
proposed in works such as Exner (1925), Neill (1971) and Ashmore and Church (1998). An explicit path length relation is
avoided here, but a relation is instead inferred between the sediment transport behaviour and deformation as representative
of the extent of active layer deformation. Employing this technique in the analysis of morphodynamics, ζ is presented as
holistically representing form derived process (morphologic change) and the product of said process (sediment transport). This
350 methodology produces a quantitative separation between two types of morphodynamics that may be used to aid the often
qualitative assessment of morphodynamics and channel behaviour. This suite of tools can provide additional support when
classifying channels ~~or~~ise, given the inherent difficulty in the analysis of process in channels.

Code and data availability. Sample data and code available at <http://doi.org/10.5281/zenodo.5044251> (Booker, 2021).

Author contributions. WHB collected the data, wrote the code for analysis and produced the majority of the paper. BCE provided editorial
355 feedback to improve the structure and flow of the paper.

Competing interests. The authors declare that they have no conflict of interest.

Acknowledgements. Thanks to ~~all~~our colleagues who provided feedback ~~to improve the on this~~ paper, in particular David Adams, Lucy MacKenzie and Conor McDowell. In addition we would like to thank the work of the referees and editorial team whose comments greatly improved the paper.

360 References

- Abrahams, A. D., Li, G., and Atkinson, J. F.: Step-Pool Streams: Adjustment to Maximum Flow Resistance, *Water Resources Research*, 31, 2593–2602, <https://doi.org/10.1029/95WR01957>, 1995.
- Adams, D. L. and Zampiron, A.: Short Communication: Multiscalar Roughness Length Decomposition in Fluvial Systems Using a Transform-Roughness Correlation (TRC) Approach, *Earth Surface Dynamics*, 8, 1039–1051, <https://doi.org/10.5194/esurf-8-1039-2020>,
365 2020.
- Ancey, C.: Bedload Transport: A Walk between Randomness and Determinism. Part 1. The State of the Art, *Journal of Hydraulic Research*, 58, 1–17, <https://doi.org/10.1080/00221686.2019.1702594>, 2020.
- Ancey, C., Böhm, T., Jodeau, M., and Frey, P.: Statistical Description of Sediment Transport Experiments, *Physical Review E*, 74, 011 302, <https://doi.org/10.1103/PhysRevE.74.011302>, 2006.
- 370 Ashmore, P. E.: How Do Gravel-Bed Rivers Braid?, *Canadian Journal of Earth Sciences*, 28, 326–341, <https://doi.org/10.1139/e91-030>, 1991.
- Ashmore, P. E. and Church, M.: Sediment Transport and River Morphology; a Paradigm for Study., in: *Gravel-Bed Rivers in the Environment*, edited by Klingeman, P. C., Beschta, R. L., Komar, P. D., and Bradley, J., pp. 115–139, Water Resources Publications, Oregon, 1998.
- Booker, W. H.: WillBooker/WB_BC_ESurf_2021: Initial Code and Data Submission (Version V1), 2021.
- Booker, W. H. and Eaton, B. C.: Stabilising Large Grains in Self-Forming Steep Channels, *Earth Surface Dynamics*, 8, 51–67,
375 <https://doi.org/10.5194/esurf-8-51-2020>, 2020.
- Buffington, J. M. and Montgomery, D. R.: 9.36 Geomorphic Classification of Rivers, in: *Treatise on Geomorphology*, edited by Shroder, J. F., pp. 730–767, Academic Press, San Diego, <https://doi.org/10.1016/B978-0-12-374739-6.00263-3>, 2013.
- Church, M.: Geomorphic Thresholds in Riverine Landscapes, *Freshwater Biology*, 47, 541–557, <https://doi.org/10.1046/j.1365-2427.2002.00919.x>, 2002.
- 380 Church, M.: Bed Material Transport and the Morphology of Alluvial River Channels, *Annual Review of Earth and Planetary Sciences*, 34, 325–354, <https://doi.org/10.1146/annurev.earth.33.092203.122721>, 2006.
- Church, M. and Ferguson, R. I.: Morphodynamics: Rivers beyond Steady State, *Water Resources Research*, 51, 1883–1897, <https://doi.org/10.1002/2014WR016862>, 2015.
- Davies, T. R. H. and Sutherland, A. J.: Extremal Hypotheses for River Behavior, *Water Resources Research*, 19, 141–148,
385 <https://doi.org/10.1029/WR019i001p00141>, 1983.
- Desloges, J. R. and Church, M. A.: Wandering Gravel-Bed Rivers, *The Canadian Geographer / Le Géographe canadien*, 33, 360–364, <https://doi.org/10.1111/j.1541-0064.1989.tb00922.x>, 1989.
- Dhont, B. and Ancey, C.: Are Bedload Transport Pulses in Gravel Bed Rivers Created by Bar Migration or Sediment Waves?, *Geophysical Research Letters*, 45, 5501–5508, <https://doi.org/10.1029/2018GL077792>, 2018.
- 390 Eaton, B. C. and Lapointe, M. F.: Effects of Large Floods on Sediment Transport and Reach Morphology in the Cobble-Bed Sainte Marguerite River, *Geomorphology*, 40, 291–309, [https://doi.org/10.1016/S0169-555X\(01\)00056-3](https://doi.org/10.1016/S0169-555X(01)00056-3), 2001.
- Exner, F. M.: Über Die Wechselwirkung Zwischen Wasser Und Gescibe in Flüssen, *Sitzungber. Acad. Wissenschaften Wien Math. Naturwiss. Abt. 2a*, 134, 165–180, 1925.
- Fenton, J. D. and Abbott, J. E.: Initial Movement of Grains on a Stream Bed: The Effect of Relative Protrusion, *Proceedings of the Royal Society of London A: Mathematical, Physical and Engineering Sciences*, 352, 523–537, <https://doi.org/10.1098/rspa.1977.0014>, 1977.
395

- Friedkin, J. F.: Laboratory Study of the Meandering of Alluvial Rivers, U.S. Army Engineer Waterways Experiment Station, Vicksburg, Mississippi, 1945.
- Ganti, V., Meerschaert, M. M., Foufoula-Georgiou, E., Viparelli, E., and Parker, G.: Normal and Anomalous Diffusion of Gravel Tracer Particles in Rivers, *Journal of Geophysical Research: Earth Surface*, 115, <https://doi.org/10.1029/2008JF001222>, 2010.
- 400 Hardy, R. J., Best, J. L., Parsons, D. R., and Marjoribanks, T. I.: On the Evolution and Form of Coherent Flow Structures over a Gravel Bed: Insights from Whole Flow Field Visualization and Measurement, *Journal of Geophysical Research: Earth Surface*, 121, 1472–1493, <https://doi.org/10.1002/2015JF003753>, 2016.
- Hassan, M. A., Church, M., and Ashworth, P. J.: Virtual Rate and Mean Distance of Travel of Individual Clasts in Gravel-Bed Channels, *Earth Surface Processes and Landforms*, 17, 617–627, <https://doi.org/10.1002/esp.3290170607>, 1992.
- 405 Hassan, M. A., Saletti, M., Johnson, J. P. L., Ferrer-Boix, C., Venditti, J. G., and Church, M.: Experimental Insights Into the Threshold of Motion in Alluvial Channels: Sediment Supply and Streambed State, *Journal of Geophysical Research: Earth Surface*, 125, e2020JF005736, <https://doi.org/10.1029/2020JF005736>, 2020.
- Kasprak, A., Wheaton, J. M., Ashmore, P. E., Hensleigh, J. W., and Peirce, S.: The Relationship between Particle Travel Distance and Channel Morphology: Results from Physical Models of Braided Rivers, *Journal of Geophysical Research: Earth Surface*, 120, 55–74, <https://doi.org/10.1002/2014JF003310>, 2015.
- 410 Kellner, J. R., Armston, J., Birrer, M., Cushman, K. C., Duncanson, L., Eck, C., Fallegger, C., Imbach, B., Král, K., Krůček, M., Trochta, J., Vrška, T., and Zraggen, C.: New Opportunities for Forest Remote Sensing Through Ultra-High-Density Drone Lidar, *Surveys in Geophysics*, 40, 959–977, <https://doi.org/10.1007/s10712-019-09529-9>, 2019.
- Lane, E. W.: A Study of the Shape of Channels Formed by Natural Streams Flowing in Erodible Material, Missouri River Division Sediment Series No. 9, U.S. Army Corps of Engineers Missouri River Division, Omaha, Nebraska, 1957.
- 415 Leduc, P., Peirce, S., and Ashmore, P.: Short Communication: Challenges and Applications of Structure-from-Motion Photogrammetry in a Physical Model of a Braided River, *Earth Surface Dynamics*, 7, 97–106, <https://doi.org/10.5194/esurf-7-97-2019>, 2019.
- Leopold, L. B. and Maddock, T.: The Hydraulic Geometry of Stream Channels and Some Physiographic Implications, USGS Numbered Series 252, U.S. Government Printing Office, Washington, D.C., 1953.
- 420 Lisle, T. E., Ikeda, H., and Iseya, F.: Formation of Stationary Alternate Bars in a Steep Channel with Mixed-Size Sediment: A Flume Experiment, *Earth Surface Processes and Landforms*, 16, 463–469, <https://doi.org/10.1002/esp.3290160507>, 1991.
- MacKenzie, L.: Channel Stability in Alluvial Gravel-Bed Streams, p. 171, 2019.
- MacKenzie, L. G. and Eaton, B. C.: Large Grains Matter: Contrasting Bed Stability and Morphodynamics during Two Nearly Identical Experiments, *Earth Surface Processes and Landforms*, 42, 1287–1295, <https://doi.org/10.1002/esp.4122>, 2017.
- 425 Montgomery, D. R. and Buffington, J. M.: Channel Classification, Prediction of Channel Response, and Assessment of Channel Condition, Tech. Rep. TFW-SH10-93-002, Washington State Department of Natural Resources, Olympia, Washington, 1993.
- Montgomery, D. R. and Buffington, J. M.: Channel-Reach Morphology in Mountain Drainage Basins, *Geological Society of America Bulletin*, 109, 596–611, [https://doi.org/10.1130/0016-7606\(1997\)109<0596:CRMIMD>2.3.CO;2](https://doi.org/10.1130/0016-7606(1997)109<0596:CRMIMD>2.3.CO;2), 1997.
- Montgomery, D. R., Abbe, T. B., Buffington, J. M., Peterson, N. P., Schmidt, K. M., and Stock, J. D.: Distribution of Bedrock and Alluvial Channels in Forested Mountain Drainage Basins, *Nature*, 381, 587–589, <https://doi.org/10.1038/381587a0>, 1996.
- 430 Morgan, J. A., Brogan, D. J., and Nelson, P. A.: Application of Structure-from-Motion Photogrammetry in Laboratory Flumes, *Geomorphology*, 276, 125–143, <https://doi.org/10.1016/j.geomorph.2016.10.021>, 2017.

- Neill, C. R.: River Bed Transport Related to Meander Migration Rates, *Journal of the Waterways, Harbors and Coastal Engineering Division*, 97, 783–786, 1971.
- 435 Phillips, J.: Nonlinear Dynamical Systems in Geomorphology: Revolution or Evolution?, *Geomorphology*, 5, 219–229, [https://doi.org/10.1016/0169-555X\(92\)90005-9](https://doi.org/10.1016/0169-555X(92)90005-9), 1992.
- Phillips, J. D.: Sources of Nonlinearity and Complexity in Geomorphic Systems, *Progress in Physical Geography: Earth and Environment*, 27, 1–23, <https://doi.org/10.1191/0309133303pp340ra>, 2003.
- 440 Popov, I. V.: Application of Morphological Analysis to the Evaluation of the General Channel Deformations of the River Ob, *Soviet Hydrology*, 3, 267–324, 1962.
- Pyrce, R. S. and Ashmore, P. E.: Bedload Path Length and Point Bar Development in Gravel-Bed River Models, *Sedimentology*, 52, 839–857, <https://doi.org/10.1111/j.1365-3091.2005.00714.x>, 2005.
- Redolfi, M., Welber, M., Carlin, M., Tubino, M., and Bertoldi, W.: Morphometric Properties of Alternate Bars and Water Discharge: A Laboratory Investigation, *Earth Surface Dynamics*, 8, 789–808, <https://doi.org/10.5194/esurf-8-789-2020>, 2020.
- 445 Reitz, M. D. and Jerolmack, D. J.: Experimental Alluvial Fan Evolution: Channel Dynamics, Slope Controls, and Shoreline Growth, *Journal of Geophysical Research: Earth Surface*, 117, 2012.
- Resop, J. P., Lehmann, L., and Hession, W. C.: Drone Laser Scanning for Modeling Riverscape Topography and Vegetation: Comparison with Traditional Aerial Lidar, *Drones*, 3, 35, <https://doi.org/10.3390/drones3020035>, 2019.
- Rhoads, B. L.: The Dynamic Basis of Geomorphology Reenvisioned, *Annals of the Association of American Geographers*, 96, 14–30, <https://doi.org/10.1111/j.1467-8306.2006.00496.x>, 2006.
- 450 Rosgen, D. L.: A Classification of Natural Rivers, *Catena*, 22, 169–199, 1994.
- Rust, B. R.: Structure and Process in a Braided River, *Sedimentology*, 18, 221–245, <https://doi.org/10.1111/j.1365-3091.1972.tb00013.x>, 1972.
- Schumm, S. A.: *The Fluvial System*, John Wiley & Sons, New York, 1977.
- 455 Schumm, S. A.: Geomorphic Thresholds: The Concept and Its Applications, *Transactions of the Institute of British Geographers*, 4, 485–515, 1979.
- Schumm, S. A.: Patterns of Alluvial Rivers, *Annual Review of Earth and Planetary Sciences*, 13, 5–27, 1985.
- Simon, A. and Thorne, C. R.: Channel Adjustment of an Unstable Coarse-Grained Stream: Opposing Trends of Boundary and Critical Shear Stress, and the Applicability of Extremal Hypotheses, *Earth Surface Processes and Landforms*, 21, 155–180, [https://doi.org/10.1002/\(SICI\)1096-9837\(199602\)21:2<155::AID-ESP610>3.0.CO;2-5](https://doi.org/10.1002/(SICI)1096-9837(199602)21:2<155::AID-ESP610>3.0.CO;2-5), 1996.
- 460 Strahler, A. N.: Dynamic Basis of Geomorphology, *Geological Society of America Bulletin*, 63, 923, [https://doi.org/10.1130/0016-7606\(1952\)63\[923:DBOG\]2.0.CO;2](https://doi.org/10.1130/0016-7606(1952)63[923:DBOG]2.0.CO;2), 1952.
- Vargas-Luna, A., Crosato, A., and Uijttewaalt, W. S. J.: Effects of Vegetation on Flow and Sediment Transport: Comparative Analyses and Validation of Predicting Models, *Earth Surface Processes and Landforms*, 40, 157–176, <https://doi.org/10.1002/esp.3633>, 2015.
- 465 Wheaton, J. M., Brasington, J., Darby, S. E., Kasprak, A., Sear, D., and Vericat, D.: Morphodynamic Signatures of Braiding Mechanisms as Expressed through Change in Sediment Storage in a Gravel-Bed River, *Journal of Geophysical Research: Earth Surface*, 118, 759–779, <https://doi.org/10.1002/jgrf.20060>, 2013.
- Whitehead, A. N.: *Process and Reality: An Essay in Cosmology*, Macmillan, New York, 1929.
- Wilcock, P. R.: Critical Shear Stress of Natural Sediments, *Journal of Hydraulic Engineering*, 119, 491–505, 1993.

- 470 Williams, R. D., Rennie, C. D., Brasington, J., Hicks, D. M., and Vericat, D.: Linking the Spatial Distribution of Bed Load Transport to Morphological Change during High-Flow Events in a Shallow Braided River: Spatially Distributed Bedload Transport, *Journal of Geophysical Research: Earth Surface*, 120, 604–622, <https://doi.org/10.1002/2014JF003346>, 2015.
- Zimmermann, A., Church, M., and Hassan, M. A.: Step-Pool Stability: Testing the Jammed State Hypothesis, *Journal of Geophysical Research: Earth Surface*, 115, F02 008, <https://doi.org/10.1029/2009JF001365>, 2010.

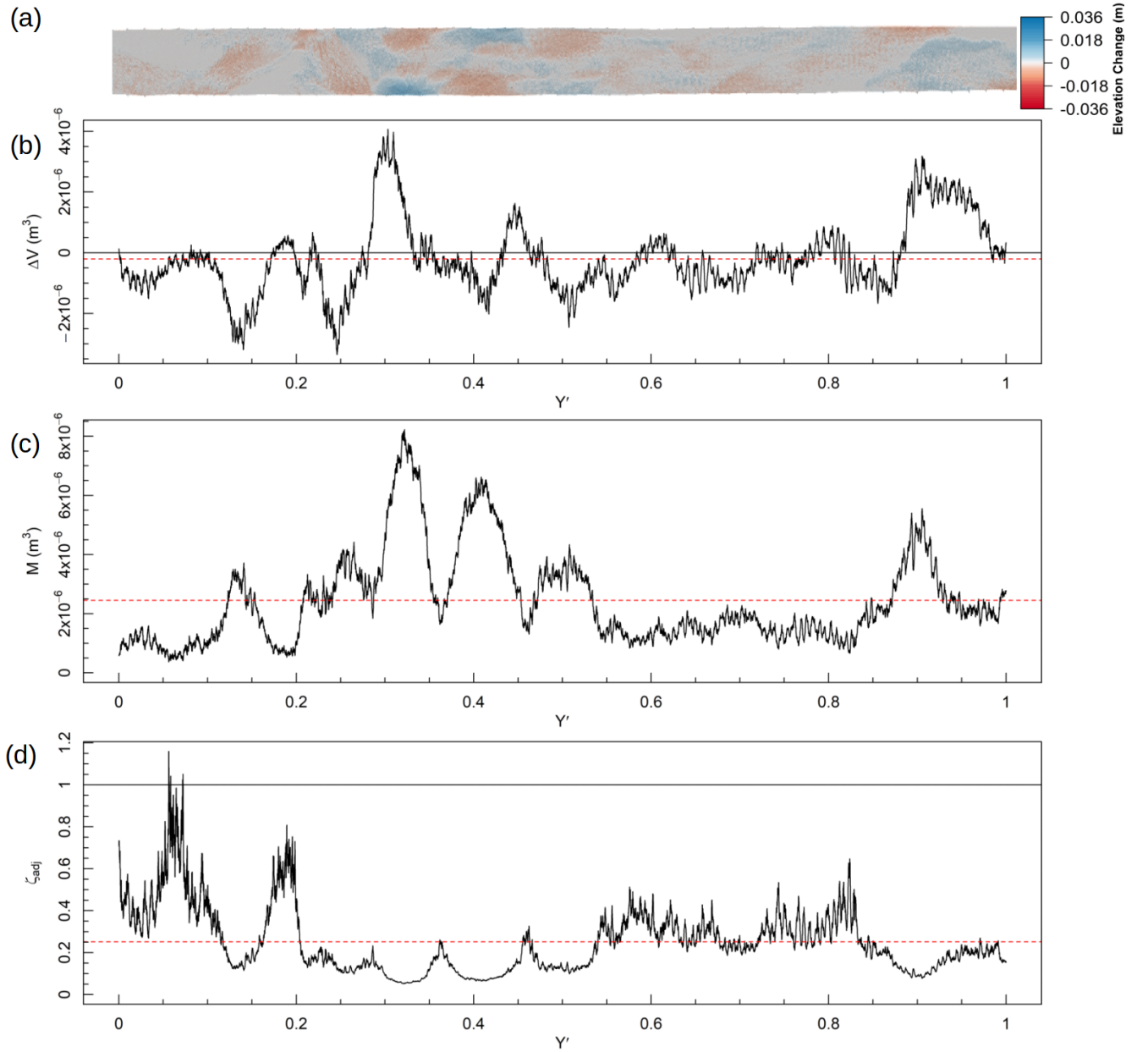


Figure 8. Example calculation of the changes to ζ for $T = 15\text{--}20$ mins in the fixed bank experiment. Flow is from the right and Y' represents the normalised distance upstream from the outlet. Panel (a) shows the whole DoD. Panel (b) shows ΔV at each cross section, the black line shows $\Delta V = 0$ and the red dashed line shows mean ΔV . Panel (c) shows M at each cross section, and the red dashed line shows mean M . Panel (d) shows the exchange-adjusted throughput ratio (ζ_{adj}) calculated for each cross section with Eq. 6c. Downstream distance is normalised as Y' given the different lengths of the DEMs used to calculate ΔV and M , the black line shows $\zeta = 0\text{--}1$ and the red dashed line shows mean ζ .

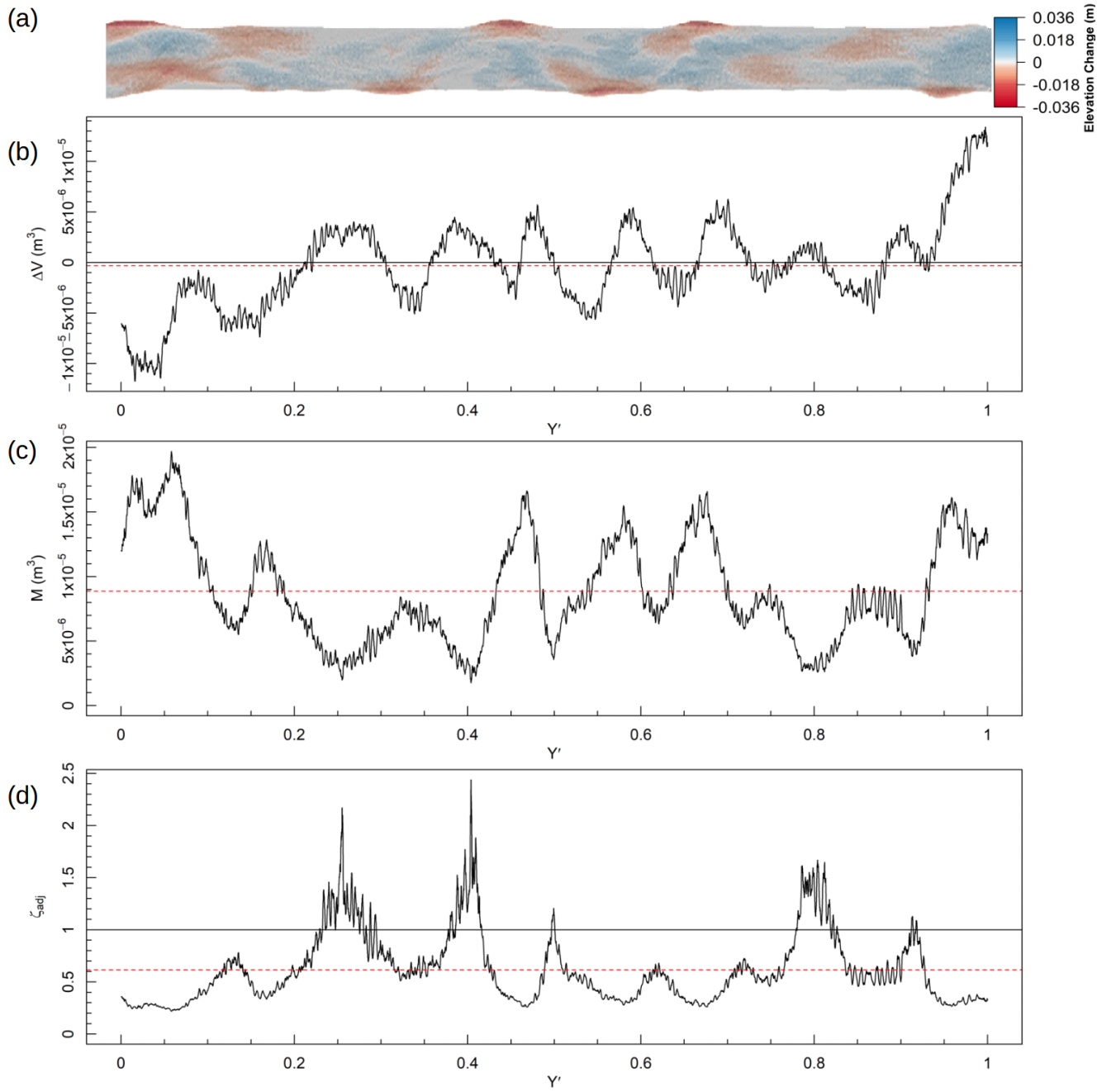


Figure 9. Example calculation of ~~the changes to the~~ ζ for $T = 15-30$ mins in the mobile bank experiment. See Fig. 8 for explanation.

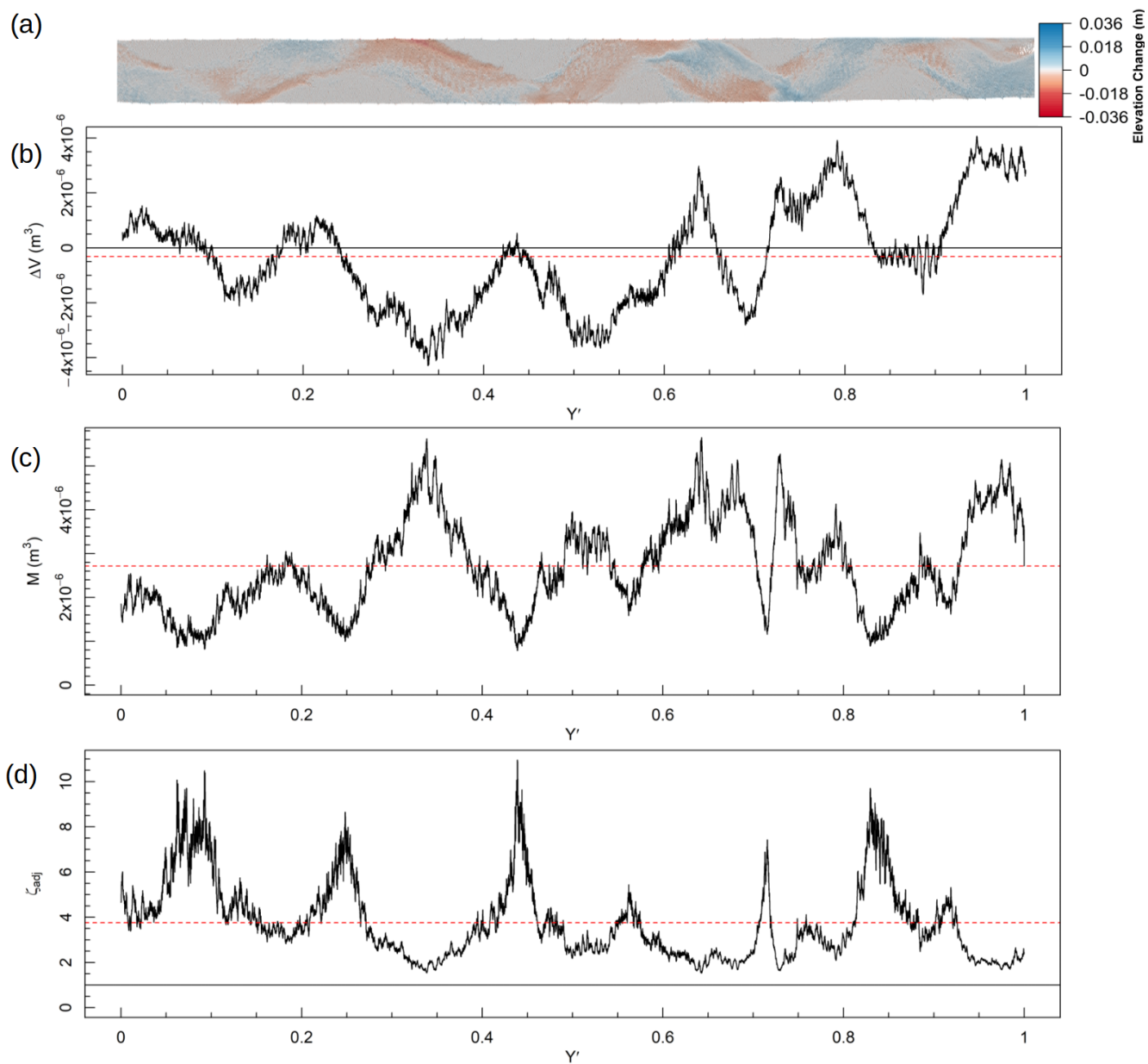


Figure 10. Example calculation of ~~the changes to~~ ζ for $T = 480$ – 600 mins in the fixed bank experiment. See Fig. 8 for explanation.

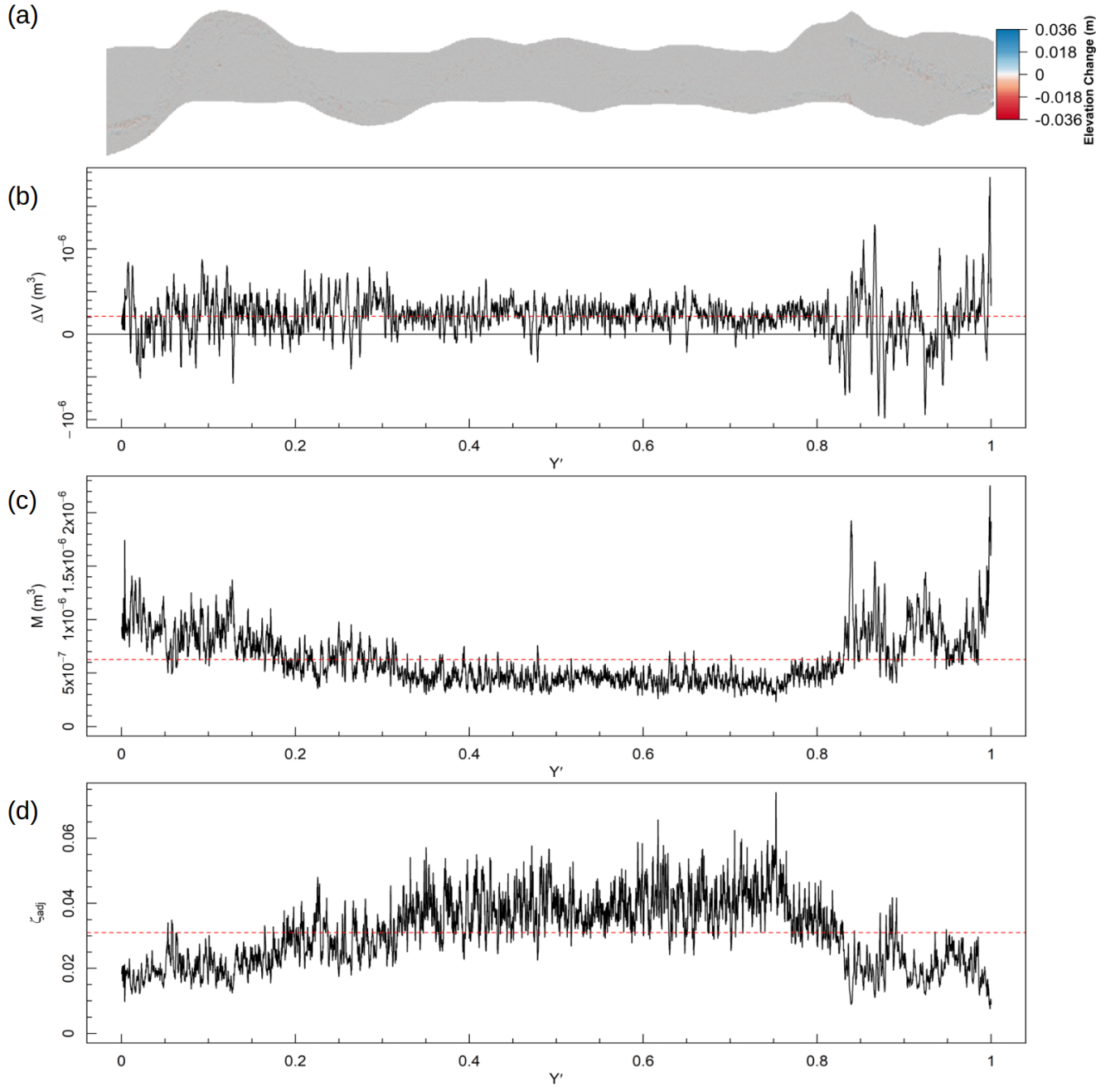


Figure 11. Example calculation of ~~the changes to~~ ζ for $T = 465\text{--}480$ mins in the mobile bank experiment. See Fig. 8 for explanation.