

# Investigation of stochastic-threshold incision models across a climatic and morphological gradient

Clément Desormeaux<sup>1</sup>, Vincent Godard<sup>1,2</sup>, Dimitri Lague<sup>3</sup>, Guillaume Duclaux<sup>4</sup>, Jules Fleury<sup>1</sup>, Lucilla Benedetti<sup>1</sup>, Olivier Bellier<sup>1</sup>, and ASTER Team<sup>1,+</sup>

<sup>1</sup>Aix-Marseille Univ, CNRS, IRD, INRAE, Coll France, CEREGE, 13100 Aix-en-Provence, France

<sup>2</sup>Institut Universitaire de France (IUF), Paris, France

<sup>3</sup>Univ Rennes, CNRS, Géosciences Rennes, UMR 6118, 35000 Rennes, France

<sup>4</sup>Université Côte d'Azur, CNRS, Observatoire de la Côte d'Azur, IRD, Géoazur, 250 rue Albert Einstein, Sophia Antipolis 06560 Valbonne, France

+A full list of authors appears at the end of the paper.

**Correspondence:** Clément Desormeaux (desormeaux@cerege.fr)

**Abstract.** Long-term landscape evolution is controlled by tectonic and climatic forcing acting through surface processes. Rivers are the main drivers of continental denudation because they set the base level of most hillslopes ~~and the~~. The mechanisms of fluvial incision are thus a key focus in geomorphological research and require accurate representation and models. River incision is often modeled with the Stream Power Model (SPM), based on the along-stream evolution of drainage area and channel elevation gradient, but can also incorporate more complex processes such as threshold effects and statistical discharge distributions, which are fundamental features of river dynamics. Despite their importance in quantitative geomorphology, such model formulations have been confronted with **fields** data only in a limited number of cases. Here we investigate the behavior of stochastic-threshold incision models across the ~~south-eastern~~ Southeastern margin of the ~~Massif Central in France~~ French Massif Central which is characterized by significant relief and the regular occurrence of high-discharge events.

10 Our study is based on a new ~~dedicated~~ dataset combining measurements of discharge variability from gauging stations, denudation rates **on** 34 basins from <sup>10</sup>Be cosmogenic radionuclide (CRN) concentration measurements in river sediments, morphometric analysis of river long-profiles ~~analysis~~ and field observations. This new dataset is used for a systematic investigation of various formulations of the SPM and **discuss** the importance of incision thresholds. Denudation rates across the SE margin of the Massif Central are in the 20-120 mm/ka range and they positively correlate with slope and precipitation. However, 15 the relationship with steepness index is complex and ~~hints at~~ supports the importance of taking into account ~~the~~ spatial variations in **parameters controlling the SPM**. Overall, the range of denudation rate across the margin can mainly be explained using a simple version of the SPM accounting for spatially heterogeneous runoff. More complex formulations including stochastic discharges and incision thresholds yield poorer performances unless spatial variations in bedload characteristics, controlling incision thresholds, are taken into account. Our results highlight the importance of the hypotheses used on such threshold in 20 SPM application to field studies and notably the impact of actual constraints on bedload size.

# 1 Introduction

Investigating landscapes evolution and their responses to tectonic or climatic perturbations requires accurate ~~representations~~ and models of surface processes such as hillslope erosion or fluvial incision (Dietrich et al., 2003). Rivers are key agents for the transmission of external forcing through ~~landscape~~ landscapes and, by setting the base level of most hillslopes, the main drivers of continental denudation. For these reasons the mechanisms of fluvial incision have been a key focus of geomorphological research over the last three decades (e.g. Howard et al., 1994; Whipple et al., 2000).

A powerful framework has been derived for the analysis of fluvial processes along bedrock rivers, by postulating that incision rate scales with either shear stress or unit stream power per river bed area (e.g. Howard, 1994; Whipple and Tucker, 1999; Sklar and Dietrich, 2006; Turowski et al., 2007; Lague, 2014). One of the main appeal of this Stream Power Model (SPM) is that incision rate can be expressed, using a limited number of reasonable assumptions, as a simple ~~of~~ function of drainage area and channel elevation gradient, which are variables easily ~~computed for~~ extracted from digital topographic data. Such simplification is the foundation for the widely used analysis of channel steepness, which is now a standard approach in the investigation of tectonically active landscapes, allowing to decipher relative rock uplift ~~distribution~~ distributions (Wobus et al., 2006; Kirby and Whipple, 2012; Whittaker, 2012), and have also been used to model fluvial incision at continental scales (e.g. Roberts and White, 2010). However, the tremendous success of these applications of the Stream Power Model should not hide the fact that some of its key aspects remain highly debated, both in terms of the parameters it incorporates ~~or~~ and the physical processes it is supposed to represent (e.g. Lague, 2014; Gasparini and Brandon, 2011; Harel et al., 2016). For example, the way rock resistance to erosion can be accounted for is still poorly understood (e.g. Sklar and Dietrich, 2001), as well as its applicability to fluvial systems where sediment transport and deposition is an important modulation of incision (e.g. Whipple and Tucker, 2002).

The existence of a threshold in discharge that need to be overcome for incision or sediment transport to occur has long been recognized in fluvial geomorphology. Taking into account such threshold in relation with a statistical description of discharge is a long-standing issue for the modelling of long-term fluvial incision and for our understanding of the contribution of extreme events to landscape evolution (e.g. Tucker and Bras, 2000; Snyder et al., 2003; Lague et al., 2005; Molnar et al., 2006; Deal et al., 2018). The theoretical implications of incorporating incision threshold and discharge distributions into stream power-based incision ~~model~~ models have been explored systematically, and highlight the emergence of complex and non-linear behavior between channel properties and incision rates.

Recently, several studies have built upon this theoretical framework and explored its applications to real landscapes, mainly by bringing together erosion rates derived from Cosmogenic RadioNuclides (CRN), river profiles morphological analysis and constraints on climatic or hydrological variability. They notably highlighted the importance of taking into account incision thresholds and discharge variability to understand the non-linear relationship between erosion rates and channel steepness. DiBiase and Whipple (2011) provided the first of such investigations in the San Gabriel mountains in California, and demonstrated the suitability of river incision models combining an incision threshold and a power law distribution of extreme discharge events to account for observations on river profile steepness and erosion rates. More generally, they explored the behavior

55 of this relationship across a wide range of climatic configurations to highlight limits in the response of channel incision to increase in runoff. Based on a denudation dataset spanning very **contrasted** climates along the central Chilean Andes, Carretier et al. (2013) demonstrated the role of extreme discharge **event** in driving most of the erosion for arid settings. Scherler et al. (2017) developed an analysis at the scale of the whole Himalayan arc and Eastern Tibet in order to explore the underlying reasons for long-wavelength variations in the relationship between channel steepness and erosion rates. They notably explored  
60 the influence of a spatially variable incision threshold and assessed the importance of climatic controls such as characteristics of monsoon precipitation. More recently, Campforts et al. (2020) highlighted the importance of taking into account lithological and climatic spatial differences when using this type of model to analyze the variance in CRN-derived denudation rates datasets.

These studies were critical tests of our ability to reconcile topographic and geochronological observations using physically-  
65 based framework for river incision. However, many of these earlier investigations relied on pre-existing CRN datasets that were acquired with sometimes independent sampling strategies. It implies datasets combining catchment areas varying over two order of magnitudes, and with notably large basins ( $>100 \text{ km}^2$ ) which cover surfaces displaying important variations in bedrock geology and climate. Additionally, due to the spatial extent of the studied regions and the lack of appropriate gauging station data, some of these studies also relied in part on remote sensing observations for the characterization of hydrological  
70 variability instead of direct measurements. **At last**, in some cases it was not possible to constrain first-order parameters with field observations, such as bedload size, which is the most important factor controlling the incision threshold.

The main objective of our study is to investigate stochastic-threshold incision models in a context where robust, short-wavelength constraints can be obtained on all the parameters involved. In particular we want to explore the importance of spatial variations of environmental parameters such as incision threshold or discharge variability, in order to better understand  
75 their control on long-term landscape evolution. In contrast with most previous studies which have addressed such questions, we design a dedicated sampling strategy focusing on **a** the Southeastern margin of the Massif Central (France), a region with well defined short-wavelength climatic and hydrological gradients and limited recent tectonic activity. For that purpose, we acquired a new consistent CRN dataset for catchment-wide denudation to compare measured landscape evolution rates with predictions of various river incision models. We analyzed river profiles and basins morphometric parameters to evaluate their  
80 relationships with denudation rates, we compiled hydrological data from gauging stations in order to characterize discharge variability, and we combined new and existing bedload size data to constrain the incision threshold.

Based on the premise that river networks are the main drivers of landscape evolution, the relationship between channel steepness and erosion rates have been intensively scrutinized, in particular to assess the implications of its degree of nonlinearity. At first-order, our new dataset displays a complex structure between these two observations, which can not be adequately fitted by  
85 a simple scaling relationship and highlight the need for a careful consideration of spatial variations in the lithological, climatic and hydrological parameters. We develop this argument by first recalling the theoretical background behind stochastic incision models and outlining the main characteristics of our study area, with an emphasis **ef on** the specific characteristics which make it a particularly appropriate setting for our investigation of such models. Then, we describe the methods used and the dedicated sampling strategy we designed, as well as the results obtained. On the basis of these results, we explore the consistency of

90 model predictions with the observed denudation rates. **At last**, we discuss the regional distribution of these denudation rates, their co-variations with various environmental factors, the adequacy of various modelling approaches and the **corresponding** implications for stochastic incision models.

## 2 Theoretical background

The theoretical background for the incorporation of discharge probability distributions into river incision models have been extensively described in previous studies (Tucker and Bras, 2000; Snyder et al., 2003; Lague et al., 2005; DiBiase and Whipple, 2011; Scherler et al., 2017; Campforts et al., 2020), and its main features will be presented briefly here. Instantaneous detachment-limited fluvial incision  $I$  can be expressed as a function of shear stress acting on the river bed  $\tau$ ,

$$I = k_e (\tau^a - \tau_c^a), \quad (1)$$

100 where  $\tau_c$  is a threshold shear stress beyond which incision occurs,  $k_e$  is an erodibility coefficient depending on the properties of the bedrock, and  $a$  an exponent dependent on the nature of incision processes. Shear stress  $\tau$  can be expressed as a function of discharge  $Q$ , slope  $S$  and channel width  $W$  as,

$$\tau = k_t \left( \frac{Q}{W} \right)^\alpha S^\beta, \quad (2)$$

with  $k_t$ ,  $\alpha$  and  $\beta$  parameters depending on the formulation used to express flow resistance. For example,  $\alpha = 3/5$  and  $\beta = 7/10$  when using Manning's frictional relationship, or  $\alpha = \beta = 2/3$  for a Darcy-Weisbach relation (Howard, 1994).

105 The critical shear stress can be expressed as,

$$\tau_c = \tau_c^* g (\rho_s - \rho_w) D_{50}, \quad (3)$$

where  $D_{50}$  is median bedload grain size,  $\tau_c^*$  is the critical Shields stress and  $\rho_s$  and  $\rho_w$  the density of sediment and water, respectively. The variation of channel width  $W$  downstream and with instantaneous discharge  $Q$  can be computed according to,

$$110 \frac{W}{W_b} = \left( \frac{Q}{\bar{Q}} \right)^{\omega_s}, \quad (4)$$

with  $\omega_s$  an empirical parameter and  $W_b$  the bankfull width, scaling with the mean annual discharge  $\bar{Q}$  as,

$$W_b = k_w \bar{Q}^{\omega_b}, \quad (5)$$

where  $k_w$  and  $\omega_b$  are another couple of empirical parameters, which can be determined from field measurements or remote sensing imagery (Kirby and Ouimet, 2011; DiBiase and Whipple, 2011; Fisher et al., 2012). Mean annual discharge  $\bar{Q}$  can be calculated from mean runoff  $\bar{R}$  and drainage area  $A$  as  $\bar{Q} = \bar{R}A^c$ , with  $c$  an exponent that we will consider equal to 1 in the following.

Equations 1 to 5 can then be combined into an expression for instantaneous incision  $I$ ,

$$I = k_e k_t^a k_w^{-a\alpha} \bar{R}^{a\alpha(1-\omega_b)} \left(\frac{Q}{\bar{Q}}\right)^{a\alpha(1-\omega_s)} A^{a\alpha(1-\omega_b)} S^{a\beta} - k_e \tau_c^a. \quad (6)$$

This equation can be simplified by defining an area exponent  $m = a\alpha(1 - \omega_b)$ , a slope exponent  $n = a\beta$ , an erodibility term

$$120 \quad K = k_e k_t^a k_w^{-a\alpha} \bar{R}^m, \quad \gamma = a\alpha(1 - \omega_s) \text{ and a threshold term } \Psi = k_e \tau_c^a,$$

$$I = K \left(\frac{Q}{\bar{Q}}\right)^\gamma A^m S^n - \Psi. \quad (7)$$

This relationship **highlight** the importance of the parameter  $\gamma$  in controlling the sensitivity of incision to discharge and its variability (Lague et al., 2005). Introducing the steepness index  $k_s = A^{m/n} S$  (Kirby and Whipple, 2012), equation 7 can also be written as,

$$125 \quad I = K \left(\frac{Q}{\bar{Q}}\right)^\gamma k_s^n - \Psi. \quad (8)$$

Assuming that the threshold term  $\Psi$  is negligible and that discharge  $Q$  is constant and equal to mean discharge  $\bar{Q}$ , equation 7 simplifies to the classical stream power form which is widely used in quantitative geomorphology studies,

$$I = K A^m S^n. \quad (9)$$

Long term incision  $E$  can be calculated by weighting instantaneous incision (equation 7 or 8) with discharge probability

$$130 \quad pdf(Q) \text{ and integrating over } Q,$$

$$E = \int_{Q_c}^{Q_m} I(Q, S, A) pdf(Q) dQ, \quad (10)$$

where  $Q_c$  is the critical discharge needed to overcome the incision threshold and  $Q_m$  is the maximum discharge.  $Q_c$  is obtained by setting  $I = 0$  in equation 7,

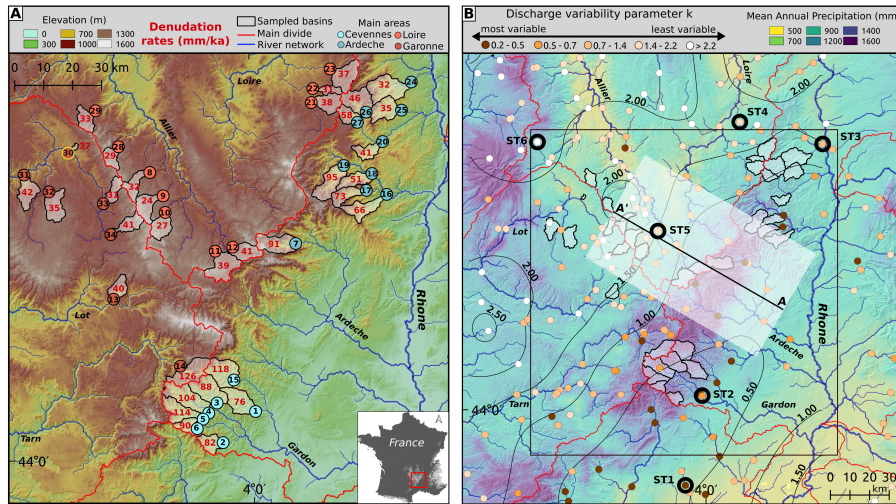
$$Q_c = \bar{Q} \left(\frac{\Psi}{K}\right)^{\frac{1}{\gamma}} A^{-\frac{m}{\gamma}} S^{-\frac{n}{\gamma}} = \bar{Q} \left(\frac{\Psi}{K}\right)^{\frac{1}{\gamma}} k_s^{-\frac{n}{\gamma}} \quad (11)$$

135 In incision models taking into account discharge variability, the probability distribution of discharges is often modelled using an inverse **gamma-Gamma** law,

$$pdf(Q^*) = \frac{k^{k+1}}{\Gamma(k+1)} \exp\left(-\frac{k}{Q^*}\right) Q^{*-(k+2)}, \quad (12)$$

where  $Q^* = Q/\bar{Q}$  is normalized discharge,  $k$  is the variability parameter, and  $\Gamma$  is the Gamma function (Lague et al., 2005).

140 Low values of  $k$  correspond to situation where the discharge variability is high. The inverse **gamma** distribution combines exponential and power law parts describing low and high discharge regimes, respectively, and accounting for the low probabilities of events at both ends of the spectrum. In this study we will use equation 10 to model erosion rates, using field constraints on its parameters and compare its predictions with cosmogenic nuclides-derived denudation rates.



**Figure 1.** A - Topographic map of the Southeastern margin of the Massif Central (France), with the location of the sampled basins and their denudation rate (red numbers). Black numbers identify the different samples. The red lines are the main regional drainage divides, between the major catchments: Loire (Lo), Rhône (Rh) and Garonne (Gr). For basins in the Rhône catchment, we distinguish two areas corresponding to the Cévennes and Ardèche mountains (Rh-C) and Ardèche mountains (in table S2S3). B - Distribution of precipitation over the studied area. Black rectangle indicates the extent of figure 1A. Colored circles are the gauging stations where the discharge variability coefficient  $k$  was estimated, with dark contours indicating selected stations with discharge distribution presented on figure 3. Dark contours correspond to a thin plate spline surface fitted to the variability data. AA' indicates the position and lateral extent of the swath profile presented on figure 2.

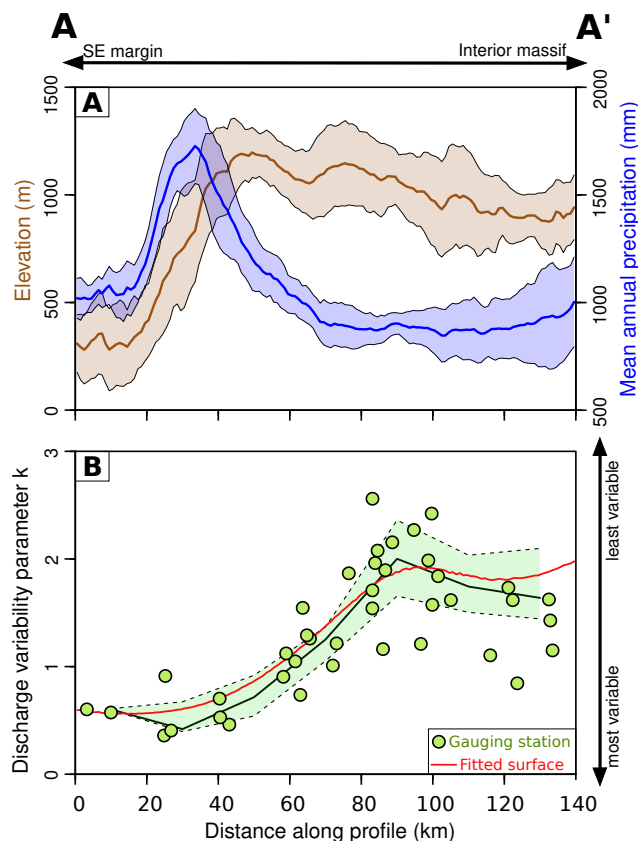
### 3 Settings

Our region of interest is located along the south-eastern Southeastern margin of the French Massif Central, directly west of the Rhône river valley (Fig. 1A).

The margin presents an asymmetric topography with deeply incised valleys draining into the Rhône on its Eastern flank (Fig. S4), while farther West, the interior of the Massif Central is characterised by lower relief and plateau areas (Fig. 2).

The limit between these two domains corresponds to the divide between the Rhône and Loire or Garonne catchments, and on the Rhône side of the divide we specifically investigate the Cévennes and Ardèche mountains with maximum elevation of ~1600 and 1750 m, respectively.

Orographic precipitation associated with moisture from the Mediterranean are focused on the topographic margin with Mean Annual Precipitation (MAP) ~1500 mm, and then a slight decrease toward MAP~1000 mm inside the Massif Central (Figs. 1A and 2). This orographic precipitation regime is also associated with very intense rainfall events, known as Cévénols events, triggering flash-floods along the rivers draining the Southeastern margin, usually in the Fall. For example, during the 8-9 September 2002 event ~500 mm precipitation have been recorded in 9 hours at one rain gauge inside the Gardon catchment (Le Lay and Saulnier, 2007).



**Figure 2.** (A) Swath profile for elevation and Mean Annual Precipitation (MAP) across the Southeastern margin of the Massif Central (width 60 km). The location of the profile is indicated on figure 1B. Solid lines and envelopes are the medians and interquartile ranges, respectively. (B) Values of the discharge variability parameter  $k$  at gauging stations (green circles). Black solid line is the median along the same swath profile as panel above. Envelope denotes the interquartile range. Red line corresponds to interpolated thin plate spline surface (Fig. 1B).

The Massif Central is part of the Hercynian orogenic system, which developed during the late Paleozoic. Due to their connection to the Rhône valley the eastern drainage systems were probably affected by the Messinian salinity crisis (Mocochain et al., 2009; Tassy et al., 2013). The Cenozoic uplift history of the Massif Central ~~, and associated mechanisms, and its mechanisms~~ are still poorly documented, but it is suspected that most of the observed relief, with respect to the Rhône valley, is associated to distinct late Miocene and to Pliocene uplift events (Olivetti et al., 2016) (Olivetti et al., 2016; Malcles et al., 2020). The present tectonic activity of the Massif Central is limited with recent uplift rate  $<100$  mm/ka. A few historical and instrumental earthquakes with magnitude  $<5$  have been reported along the southeastern margin (Mazzotti et al., 2020) (Mazzotti et al., 2020; Ritz et al., 2020). Bedrock lithology is dominated by crystalline Hercynian basement (granites, gneisses and micashists), Mesozoic-Cenozoic sedimentary series and Late Cenozoic volcanic rocks (Fig. S1). In the following we focus on the quartz-bearing lithologies when collecting samples for  $^{10}\text{Be}$  analysis.

In summary, the SE Massif Central presents a clear topographic margin with contrasting domains on both side of the drainage divide, associated with strong climatic and hydrological gradients. In our study we take advantage of this particular configuration as well as low tectonic activity and strong climatic variability, to explore stochastic-threshold incision models.

## 170 4 Methods and data

We present the various datasets which were acquired or used for our study. For the sake of clarity, for each type of data we successively present the methodology and corresponding results.

### 4.1 Discharge variability

#### 4.1.1 Methods

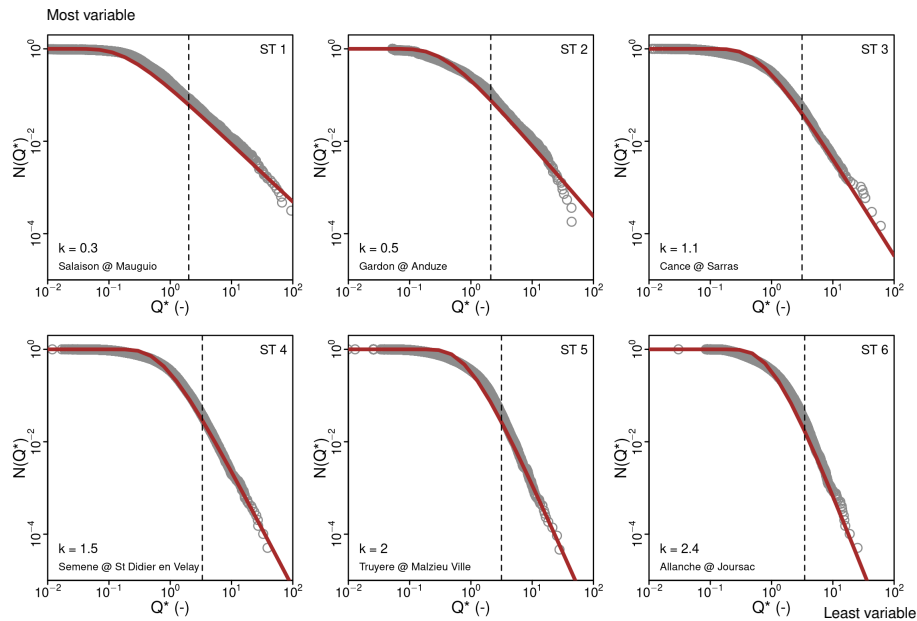
175 We extracted daily discharge data for 326 gauging stations from the Banque HYDRO (<http://hydro.eaufrance.fr>) [data-base](#)[database](#), over the SE margin of the Massif Central and surrounding areas, with records spanning at least 20 years. The time series were first processed to identify anomalies such as missing or zero values, or sequences of days with identical data. For each station a starting and ending dates were manually defined in order to extract the longest continuous series of valid data. The discharge data were normalized by the mean discharge and empirical cumulative distributions where calculated. Our focus here is on  
180 the high discharge part of the distribution and the contribution of associated events to incision, and we fitted a power law to that part of the distribution, of the form  $pdf(\bar{Q}) \propto \bar{Q}^{-\alpha}$ . The value of exponent  $\alpha$  is an indicator of the importance of high-discharge events in the flow regime (Molnar et al., 2006), and is directly related to the variability parameter of the inverse gamma distribution (equation 12) by  $\alpha = k + 2$ .

The power law was fitted using the approach of Clauset et al. (2007) to determine both the exponent  $\alpha$  and the minimal normalized discharge value corresponding to the lower bound of the power law behavior. [The identification of the lower limit  \$x\_{min}\$  of the power law behavior is done by selecting the value yielding a probability distribution of the empirical normalized discharge data above  \$x\_{min}\$  as close as possible to the best-fit power-law model.](#) In addition to a long-wavelength pattern associated with the global regional climatic setting, we expect to observe short-wavelength variations due to diversity in catchment size, bedrock geology and vegetation and also an uncertainty resulting from the limited length of the records, differences in  
190 monitoring practices by operators and biases in the measurement of extreme events. We are interested in the first-order regional variation of climatic parameters, and in order to obtain a long-wavelength approximation of the spatial distribution of  $k$  over our study area we fitted a thin plate spline surface to the stations measurements of  $k$ .

#### 4.1.2 Results

The calculated variability parameter  $k$  (equation 12) ranges from 0.1 to 3.7, with lower values similar to contexts characterized  
195 by pronounced discharge variability and a significant occurrence of extreme events (Lague et al., 2005; Molnar et al., 2006;



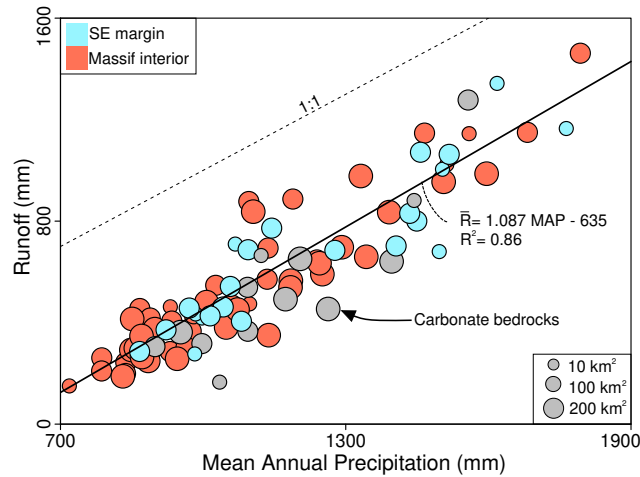


**Figure 3.** Normalized daily discharge exceedence frequency for selected gauging stations (dark grey circles, see figure 1B for location). Dark red lines are fitted inverse gamma distribution (equation 12). The corresponding value of the discharge variability parameter  $k$  is indicated in each panel. The vertical dashed lines indicate for each station the lower bound of the normalized discharge values used to fit the power law (Clauset et al., 2007).

DiBiase and Whipple, 2011). We observe a clear gradient in the spatial distribution of this variability parameter (Figs. 1B, 2 and 3).

Low  $k$  values are dominant along the topographic margin of the SE Massif Central in the Cévennes and Ardèche areas, but also farther South and North along the Rhône valley. It corresponds to the areas affected by intense precipitation events of Cevenol and ~~Mediterranean~~-Mediterranean type. Conversely, when moving inside the Massif, the measured  $k$  increases, with values in the 2 to 3.7 range indicative of a less variable hydrological regime. Furthermore, the thin plate spline surface correctly reproduces the global spatial variability gradient across the margin (Fig. 2) and we use it to compute basin-averaged  $k$  and incorporate there into the stochastic incision models.

Paleofloods and historical floods have been documented in our study area, in particular along the Ardèche river (Sheffer et al., 2003; Nauland and the Gardon river (Dezileau et al., 2014), allowing to assume a high discharge variability regime since at least the middle Holocene. The absolute values of precipitation and discharge variability have probably changed through time and been modulated by the succession of glacial cycles but, as the present-day relief is associated with late Miocene to Pliocene uplift events (Olivetti et al., 2016, 2020; Malcles et al., 2020), it can be assumed that the orographic pattern and associated relative climatic contrasts across the margin are persistent throughout the Quaternary.



**Figure 4.** Comparison between runoff and Mean Annual Precipitation for 83 selected gauging stations and their corresponding watersheds. Blue and red-orange symbols correspond to watersheds located on the south-eastern Southeastern margin and inside the Massif Central, respectively. Grey circles indicate basins draining carbonate bedrock. The size of the circles depends on the area of the watersheds. The black dashed line corresponds to  $MAP = \bar{R}$  and the black solid line is a linear fit excluding carbonate bedrock watersheds.

210 While a number of previous geomorphological studies have investigated the impact of variations in parameters quantifying discharge variability over large areas such as the Himalayas (Scherler et al., 2017) or the Continental US (Molnar et al., 2006), our study is the first to tackle this issue over a such a well defined short-wavelength (<100 km) gradient.

## 4.2 Runoff

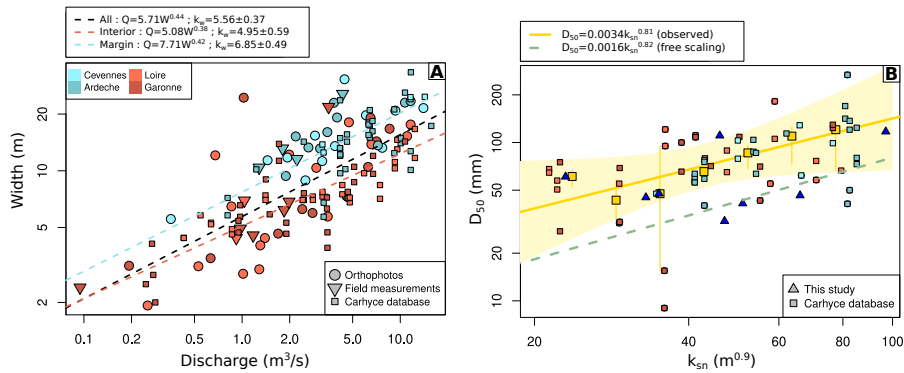
### 4.2.1 Methods

215 We only have discharge gauging stations data at a limited number of locations, which are not coincident with our sampling sites. We calibrate a relationship between basin-averaged precipitation and runoff at these instrumented locations, in order to be able to compute runoff at the sites where we obtained  $^{10}\text{Be}$  denudation rates. We extracted catchment boundaries for Banque HYDRO stations in our study area and computed the catchment-averaged Mean Annual Precipitation (MAP) using a 250 m resolution raster (Joly et al., 2010), as well as the runoff from discharge data for these stations. We restricted our analysis to  
 220 drainage areas ranging from 10 to 400 km<sup>2</sup>.

### 4.2.2 Results

We observe a positive correlation between basin-averaged MAP and runoff measured at gauging stations (Fig. 4).

There is no clear distinction in behavior between the interior of the massif and its Southeastern margin, and catchments draining over carbonate lithologies do no display a different trend than the rest of the dataset. We use the fitted linear relation-



**Figure 5.** (A) Bankfull river width against discharge calculated using the calibration of figure 4. Circles, triangles and squares correspond to orthophotos measurements, field measurements and data from the Carhyce database (Gob et al., 2014), respectively. Dashed black line is a power law fit of the whole dataset, whereas blue and red dashed lines correspond to fits to the Ardèche-Cévennes (high relief, East of the divide) and Loire-Garonne (lower relief, West of the divide) subregions, respectively. Symbols are colored according to the 4 different subregions. (B) Median bedload size  $D_{50}$  as a function of steepness index  $k_{sn}$ . Triangles and squares correspond to our field measurements and Carhyce database, respectively. Yellow squares are binned values (median and interquartile range) and yellow line is the corresponding power law fit (equation 13), with its 99% confidence envelope. Dashed green line correspond to the estimate of the parameters of equation 13 from the model presented on figure 7F.

225 ship between  $MAP$  and  $\bar{R}$  in order to compute an estimate for runoff  $\bar{R}$  for the catchments where we obtained  $^{10}\text{Be}$  denudation rates (table S3).

### 4.3 Channel width

#### 4.3.1 Methods

We **calibrate** the scaling relationship between discharge and channel width (equation 5), with measurements at various locations  
 230 in our region of interest. We use IGN orthophotos (BD ORTHO IGN - 50 cm resolution) in low-vegetation areas or field measurement with a laser range finder. We **combine** our data with measurements from the Carhyce database (Gob et al., 2014) (<http://194.57.254.11/IED/>, accessed 01/05/21). Discharge values at the measurement site were calculated from the runoff-precipitation calibration relationship (Fig. 4). We restricted our analysis to drainage areas  $< 400 \text{ km}^2$  and discharge  $> 0.1 \text{ m}^3 \cdot \text{s}^{-1}$ .

#### 235 4.3.2 Results

We observe a positive correlation between channel width and discharge (Fig. 5A) and, for a given discharge, channel widths are larger along the margin (Cévennes and Ardèche) than west of the divide (red symbols).

We fit power laws to the whole dataset and to subsets corresponding to both sides of the divide in order to calibrate the relationship described by equation 5. When considering the whole dataset we obtain a value for the exponent  $\omega_b = 0.44$  which is within the range of reported previous observations (Campforts et al., 2020), and close to the  $\omega_b = 0.55$  we impose in order to keep equation 8 dimensionally consistent when using  $m/n = 0.45$ . In this case we obtain a value of  $k_w = 5.56 \pm 0.37 \text{ m}^{-0.65} \text{ s}^{0.55}$ . If we distinguish the regions East and West of the divide, the values of  $k_w$  are  $4.95 \pm 0.59$  and  $6.85 \pm 0.49$ , respectively. We consider this difference in  $k_w$  to be significant over our area of interest and we use distinct values for the corresponding regions in the following.

## 4.4 River long-profile

### 4.4.1 Methods

We extracted the catchment contour and upstream river network for each site where  $^{10}\text{Be}$  concentrations were measured in order to compute basin-scale topographic metrics such as normalized channel steepness  $k_{sn}$  (Kirby and Whipple, 2012). We use a 25 m resolution Digital Elevation Model (BD ALTI IGN) and a source area of  $2.2 \text{ km}^2$  for channel initiation. The optimal concavity of the stream network for each basin was defined using the integral approach of Perron and Royden (2012). Normalized steepness indexes were then computed along the river profiles, that were filtered to remove short-wavelength noise and artifacts, using a reference concavity value set at 0.45 (Fig. S3).

### 4.4.2 Results

The channel concavity ranges from 0.13 to 0.87 (table S2S3) with a mean value of  $0.52 \pm 0.19$  which is close to the usual reference concavity value used in channel profile analysis. The normalized steepness index  $k_{sn}$  ranges from 22 to  $97 \text{ m}^{0.9}$ . The highest values are observed on Ardèche, Cévennes and Garonne areas with average of  $63 \pm 13$ ,  $47 \pm 11$  and  $44 \pm 12 \text{ m}^{0.9}$  respectively, while the Loire watershed presents slightly lower values at  $30 \pm 7 \text{ m}^{0.9}$ .

## 4.5 Bedload characteristics

### 4.5.1 Methods

We use bedload median size  $D_{50}$  to estimate the critical shear stress  $\tau_c$  using equation 3. We performed bedload counts at some sites in the Cévennes and Ardèche areas and combined these results with  $D_{50}$  measurements from the Carhyce database (Gob et al., 2014) (<http://194.57.254.11/IED/>, accessed 01/05/21). In addition to the determination of a single  $\tau_c$  value derived from the average  $D_{50}$  over our study area (DiBiase and Whipple, 2011), we also consider the possibility of spatial variations in  $\tau_c$ . Such variability can be parametrized using equation 3 and a power law relationship between  $k_{sn}$  for the upstream basin and the median bedload grain size  $D_{50}$  (Attal et al., 2014; Scherler et al., 2017), such as,

$$D_{50} = k_{50} k_{sn}^q \quad (13)$$

## 4.5.2 Results

Median bedload size is ranging from 10 to 200 mm over our study area. The average  $D_{50}$  is 80 mm (Fig. 5B), corresponding to  $\tau_c = 40$  Pa which is similar to the value used by DiBiase and Whipple (2011) in the San Gabriel Mountains. Coarse bedload was dominant in the river we surveyed along the margin, whereas we observed occurrences of gravel or sand-dominated reaches for the low relief parts of the landscape, west of the divide. Fitting equation 13 to the dataset support the existence of a power-law relationship between  $D_{50}$  and  $k_{sn}$ , with exponent  $\sim 0.8$ . We do not observe a difference in scaling between the two sides of the divide. For the low- $k_{sn}$  regions, corresponding mostly to areas west of the divide, measured  $D_{50}$  values are dominantly in the 30-60 mm range, whereas they are mostly  $>50$  mm for the eastern catchments draining toward the Rhône.

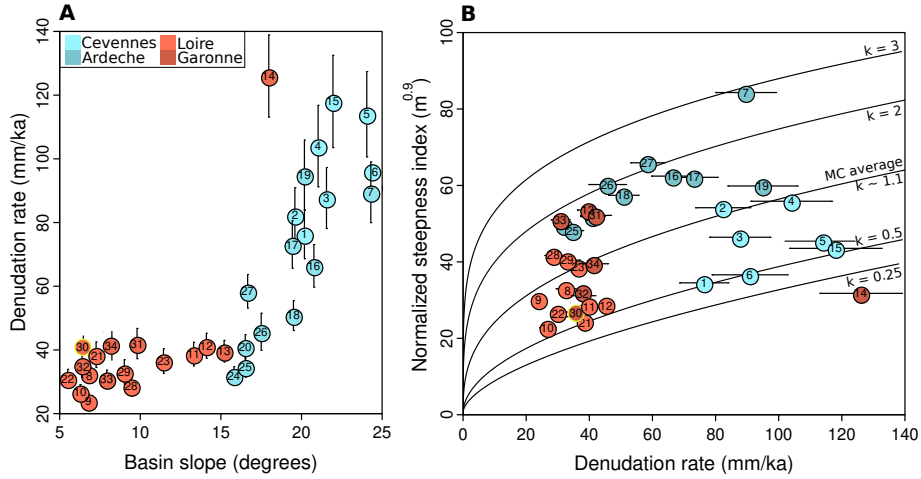
## 275 4.6 Cosmogenic nuclides

### 4.6.1 Methods

We measured  $^{10}\text{Be}$  concentrations in quartz from river sands of basins draining the SE margin of the Massif Central, as well as the upper Loire and Garonne catchments. Sampled basins were primarily selected according to their size (21 to 95 km<sup>2</sup> with the exception of basin CDX-30) and the observation of regular concave river long-profiles, without major knickpoints (Fig. S3). We also restricted our sampling to basins draining uniform lithologies, focusing on the Paleozoic basement units, constituted of granites and gneisses, as well as schists in the Cévennes area (Fig. S1). Quartz was extracted and purified from the samples by standard physical and chemical procedures. A mass of  $\sim 20$  g of quartz was digested with HF along with a  $^9\text{Be}$  carrier solution, and Be was extracted with ions exchange columns.  $^{10}\text{Be}/^9\text{Be}$  ratios were finally measured at the French AMS National Facility, located at CEREGE in Aix-en-Provence. Steady-state denudation rates were computed using the online calculator described in Balco et al. (2008). A detailed description of the analytical procedure, calculation and results is provided in the supplementary materials.

### 4.6.2 Results

Measured  $^{10}\text{Be}$  concentrations in the 34 sampled catchments range from 51 to  $345 \times 10^3$  at/g (table S1). The corresponding calculated denudation rates range from 24 to 126 mm/ka (Fig. 1A), which correspond to integration time of 25 and 5 ka, respectively. We observe clear regional differences in denudation rates between the main sampling areas. The upper Loire and Garonne catchments, in the interior of the Massif Central, display the lowest denudation rates with averages of  $33 \pm 4$  mm/ka and  $37 \pm 4.5$  mm/ka, respectively. Significantly faster denudation is observed along the margin of the Massif, in the Ardèche mountains ( $58 \pm 7$  mm/ka) and especially in the Cévennes area ( $95 \pm 11$  mm/ka). We note that Basin CDX-14, with the highest denudation rate of the dataset, is located next to the main divide between Garonne and Rhône watersheds, very close to the Cévennes area and is draining over schist bedrock. This range of denudation rates is consistent with previous observations in the Massif Central (Schaller et al., 2001, 2002; Molliex et al., 2016; Olivetti et al., 2016).



**Figure 6.** (A) Comparison between erosion rate and basin slope. Symbols are colored according to the location of the measurements (Cévennes, Ardèche, Loire and Garonne). Basin CDX-30 is a very small catchment when compared to the rest of our dataset and colored in yellow. (B) Comparison between normalized channel steepness index and denudation rates. Black lines correspond to the theoretical relationship between denudation rate and steepness index computed from equations 8 and 10, for various values of the discharge variability parameter  $k$ . We set the critical shear stress  $\tau_c = 40$  Pa and the erodibility coefficient  $k_e = 8 \times 10^{-13} \text{ m}^{2.5} \text{ s}^2 \text{ kg}^{-1.5}$ . We use a regionally-averaged value for runoff  $\bar{R} = 650$  mm/a.

Denudation rates are positively correlated with basins average slope and relief (Fig. 6A and S4S2) but the dataset as a whole does not display any clear relationship with steepness index (Fig. 6B).

With the exception of CDX-CRN-30, all the sampled basins have areas between 20 and 100 km<sup>2</sup> and we do not observe any dependence of denudation rates with catchment area over this range (Fig. S2 and table S3), suggesting that there is no 1<sup>st</sup> order scale-dependent bias in terms of the processes contributing to denudation in our dataset (Niemi et al., 2005; Yanites et al., 2009).

## 5 Denudation rates modelling

### 5.1 Modelling approach

We model denudation rates for each basin where we have <sup>10</sup>Be data, using various formulations of the Stream Power Model. First, if we do not take into account discharge variability, denudation rate  $E$  can be derived from equation 9 as,

$$E = K k_s^n = k_e k_t k_w^{-a\alpha} \bar{R}^m k_s^n \quad (14)$$

In this case we can either neglect the spatial variations of runoff and consider that  $\bar{R}$  is constant and set to a regional average value for all the considered basins (Area-based Stream Power Model : A-SPM) or take into account these spatial variations

**Table 1.** References parameters used in the modelling

Parameter	Description	Value	Unit
$k_\omega$	Scaling parameter between bankfull river width and discharge		$\text{m}^{-0.65} \text{s}^{0.55}$
	Massif Central SE margin (Ardèche and Cévennes mountains)	6.85	
	Massif Central interior (Loire and Garonne headwaters)	4.95	
$k_t$	Flow resistance factor	1000	$\text{m}^{-7/3} \text{s}^{-4/3} \text{kg}$
$\omega_s$	At-a-station channel width variation exponent	0.25	dimensionless
$\omega_b$	Downstream channel width variation exponent	0.55	dimensionless
$a$	Bed shear stress exponent	3/2	dimensionless
$\alpha$	Flow resistance exponent (Darcy–Weisbach)	2/3	dimensionless
$\beta$	Flow resistance exponent (Darcy–Weisbach)	2/3	dimensionless
$\theta_{ref}$	Reference concavity	0.45	dimensionless
$\rho_s$	Sediment density	2.7	$\text{g cm}^{-3}$
$\rho_w$	Water density	1	$\text{g cm}^{-3}$
$\tau_c^*$	Critical Shield stress	0.03	dimensionless

Note that  $\theta_{ref} \equiv m/n = \alpha(1 - \omega_b)/\beta$

310 (Runoff-based Stream Power Model : R-SPM). In both cases, all the parameters are set to values from the literature or calculated for the areas we investigate (table 1).

The only unconstrained parameter is the erodibility coefficient  $k_e$ . We account for differences in erodibility between the Cévennes schists and the granitic or gneissic basement encountered for all other areas, by introducing a modulation factor  $f_s$  for basins draining over the former. Thus, the A-SPM and R-SPM cases have two free parameters  $k_e$  and  $f_s$ .

315 We also consider Stochastic Threshold Stream Power Models (ST-SPM), incorporating the probability distribution of stream discharge as formulated in equation 10. First, we set the critical shear stress  $\tau_c$  (equation 1) using the average observed median grain size over our study area using equation 3 (Fig. 5B). Second, similarly to Campforts et al. (2020) and Scherler et al. (2017) we consider  $\tau_c$  as a free parameter in addition to  $k_e$  and  $f_s$ .

320 The last model formulation we consider is the case where the critical shear stress  $\tau_c$  is not uniform over the study area, as in the previous case, but spatially variable (SVT-SPM) and defined using equations 3 and 13, as explored by Scherler et al. (2017). Contrary to some previous studies (Scherler et al., 2017; Campforts et al., 2020) we have actual field constraints on  $D_{50}$  and its relationship with  $k_{sn}$ , and we first set the parameters  $k_{50}$  and  $q$  of equation 13 according to these constraints (Fig. 5B). In a second time we run the models considering  $k_{50}$  and  $q$  as free parameters, similar to the approach of Scherler et al. (2017).

325 Following Campforts et al. (2020) we use various metrics to evaluate the quality of the fit between the  $n$  modelled ( $M$ ) and observed **denudation rates** ( $O$  with uncertainty  $\sigma$ ) **denudation rates**, such as the coefficient of determination  $R^2$  for a linear fit

between  $O$  and  $M$ , or the  $\chi^2$  value,

$$\chi^2 = \sum_{i=1}^n \left( \frac{O_i - M_i}{\sigma_i} \right)^2, \quad (15)$$

and we maximize Nash–Sutcliffe model efficiency  $NS$  for our determination of optimal parameters,

$$NS = 1 - \frac{\sum_{i=1}^n (O_i - M_i)^2}{\sum_{i=1}^n (O_i - \bar{O})^2} \quad (16)$$

## 5.2 Results

We observe that R-SPM allows for a slightly better prediction of denudation rates than A-SPM (Figs. 7A and 7B), with notable differences between the two models for ~~low~~lower denudation rates (<50 mm/ka).

In both cases the erodibility coefficient  $k_e$  for the Cévennes schist bedrock is higher than for the crystalline basement lithologies of the other areas, which is consistent with estimates of relative differences in erodibility for these types of rocks (Campforts et al., 2020). Using a ST-SPM, with a unique threshold value calculated according to observed regionally-average  $D_{50}$  (Fig. 7C), induces a drastic degradation of the fit. While the model is able to reasonably predict the denudation rates for some of the high-relief catchments along the margin (Cévennes and Ardèche areas), it largely underpredicts them for the other areas inside the Massif. The introduction of a variable threshold set by equation 13 (SVT-SPM) yields a better fit than the constant threshold case (Fig. 7D), notably by improving the prediction for some of lowest denudation catchments, west of the divide. However the quality of the fit is still inferior to the R-SPM case. When considering a free regionally-constant threshold the optimization converges toward an almost negligible value, corresponding to a situation which is essentially similar to R-SPM (Fig. 7F). At last, if we consider the 2 parameters of the scaling described by equation 13 as free parameters, the optimisation yields a fit to the data which is equivalent to R-SPM. Noticeably, the retrieved scaling exponent  $q$  between  $D_{50}$  and  $k_{sn}$  of  $\sim 0.8$  is almost identical to the observed value (Fig. 5B), while the  $k_{50}$  factor implies  $\sim 2$  times lower predicted  $D_{50}$  values, but which are still within the lower range of observations.

## 6 Discussion

After the presentation of the data and main results of our study, we now discuss our denudation rates dataset in the context of the SE margin of the Massif Central, the relative efficiency of the various SPM formulations which can be used to explain the distribution of these denudation rates, and the comparison of our observations with ~~other~~-similar studies in other regions. We note that the time scale of our study is relatively short and set by the integration times of denudation rates ranging from 5 to 25 ka (table S1).

### 6.1 Distribution of denudation rates

Here we discuss the spatial distribution of denudation rates across the SE margin of the Massif Central and their relationship with morphological parameters. As we described earlier, the range of denudation rates from our sampled catchments is con-



sistent with previous observations in the Massif Central. Olivetti et al. (2016) report denudation rates ranging from 34 to 79 mm/ka on 27 watersheds located directly north of our studied catchments in the Ardèche mountains, with similar lithologies and areas. As many of the catchments from Olivetti et al. (2016) contain knickpoints, the relationships between denudation rates and morphology is not directly comparable with the one observed with our dataset, for which we specifically selected  
360 basins according to the regularity of river long profiles. A larger scale analysis of denudation in the Gulf of Lion drainage system was performed by Molliex et al. (2016), with 4 sampled watersheds along the ~~south-eastern~~ Southeastern margin of Massif Central, corresponding to the Eyrieux, Ardèche, Cèze and Gard rivers near the Cévennes mountains, with average denudation rates of  $79.6 \pm 15$ ,  $67.4 \pm 11.5$ ,  $78.0 \pm 16.2$  and  $70.0 \pm 11.9$  mm/ka, respectively. ~~The sampled~~ These basins are one order of magnitude larger than the ones ~~in our dataset~~ we sampled, and drain over heterogeneous lithologies with a significant contribution  
365 of the sedimentary cover in the low relief area between the Massif ~~central~~ Margin ~~Central~~ margin and the Rhône river, which might explain the slightly lower denudation rates when compared to our samples from the Cévennes area. Denudation rates of  $33 \pm 7$  and  $68 \pm 16$  mm/ka were obtained by Schaller et al. (2001) on the other side of the divide for the Allier and Loire catchments, respectively. Both catchments are larger ( $>250$  km<sup>2</sup>) than the ones we sampled and include Cenozoic volcanics, but the denudation rate reported for the Allier headwaters from Schaller et al. (2001) is consistent with our observations from  
370 smaller catchments 11 and 12, while we have no equivalent in our dataset for the Loire headwaters catchment where they report higher denudation rates ~~are reported~~. The current geography of the southeastern margin of the Massif Central and the observed contrasts in denudation rates suggest that there is some degree of westward migration of the divide as well as local river captures events, especially in the Cévennes and southern of Ardèche areas. However, no large-scale disequilibrium such as knickpoints or relict surfaces, associated with such captures was identified in the headwaters of our sampled basins. We also note that the measured concavities in our basins (table S3) show a dispersion with relatively low values for some of the Loire and Garonne catchments ( $<0.4$ ) and higher values for some of the Cévennes and Ardèche catchments (up to 0.8 locally), although the averaged value is around 0.5, which is consistent with global compilations (Harel et al., 2016) and theoretical predictions of the Stream Power Model with  $m = 0.5$  and  $n = 1$  when assuming a steady state over the study area (Lague, 2014). This observed dispersion in concavity may be due to the strong precipitation gradient over our study area (Fig. 2), but the  
375 correlation between denudation rates and concavity in some basins (Fig S2) could also be interpreted as reflecting a transient response and retreat of the topographic margin. This deviation from a strict steady state situation could explain some of the scatter in our dataset with respect to the predictions of the various modelling formulations we test.

Denudation rates are positively correlated with basin-average slope (Fig. 6A), with a progressive linear increase in low-relief basins of the interior of the Massif with slope ranging from  $5^\circ$  to  $15^\circ$  and then a much more rapid increase beyond  $20^\circ$  for the  
385 Cévennes and Ardèche basins along the margin. Such relationship between denudation rates and slope is consistent with non-linear models of hillslope evolution, where denudation rate increase very rapidly when hillslope angles become close to their stability threshold (Ouimet et al., 2009; DiBiase and Whipple, 2011; Carretier et al., 2013). Denudation rates are increasing non-linearly with relief, and also display a strong spatial difference between the margin and the interior of the Massif (Fig. ~~S4~~ S2), with low denudation in the low relief headwaters of the Loire and Garonne watersheds and significant scatter with  
390 higher rates for the the Cévennes and Ardèche basins. We note that denudation rates are also ~~very clearly~~ positively correlated

with runoff (Fig. S3), which primarily 8A). A similar correlation has been observed in other non-tectonically active contexts, such as Kaua'i island (Ferrier et al., 2013b, a) across a wide range of precipitation. As suggested by Ferrier et al. (2013b), lithological homogeneity and the absence of rock uplift gradient might be an important factor in allowing the expression of such relationship between denudation rates and precipitation. These two conditions are present in our study area, however, we  
395 note the existence of a pronounced orographic effect across the margin, such that the correlation between runoff and denudation also partly reflects the underlying spatial distribution of orographic-precipitation with higher rainfall focusing-focused on the steep and high-relief margin-areas (Figs. 1B, 8B and 2).

We do not observe a simple relationship between normalized channel steepness index and catchment denudation rates (Fig. 6B). Samples from the interior of the Massif Central display a large range of  $k_{sn}$  up to  $\sim 60 \text{ m}^{0.9}$  while denudation rates  
400 remain low. In the Ardèche mountains a positive correlation exists between  $k_{sn}$  and denudation rates, with a much shallower trend than for the Loire and Garonne catchments. Samples from the Cévennes area are clustering outside of the general trend, with high denudation rates for comparatively low  $k_{sn}$  which could be, in part, related to a lithological control on erodibility and the dominance of schist bedrock as opposed to the granitic and gneissic basement of the other sampled basins. Equations 8 and 10 predict a non-linear relationship between denudation rate and steepness index  $k_{sn}$  with a strong influence of the  
405 discharge variability parameter  $k$  (DiBiase and Whipple, 2011). Due to the absence of a clear unique trend in our dataset, no single theoretical relationship can explain the distribution of denudation rates and  $k_{sn}$  when using regionally averaged values for model parameters (Fig. 6B). Notably, taking into consideration the variation of runoff and discharge variability for individual samples (Fig. S5) does not allow to identify significant trends in the data (Adams et al., 2020), as their covariation with denudation rates mostly reflects their underlying spatial distribution and differences between the margin and the interior of  
410 the Massif. Even if Cévennes basins data appear to be consistent with model predictions for low discharge variability  $k$  values, in other areas the  $k$  values which would yield the better correspondence between data and model do not agree with observations. For example, basins from the Ardèche mountains and the Loire headwaters display low and high  $k$  values, respectively, whereas the theoretical relationship between denudation rate and  $k_{sn}$  on figure 6B-figures 6B and S5 would imply the opposite. For some areas from the interior of the Massif, we also note a high variability in  $k$  and runoff for samples presenting similar  
415 denudation rates and  $k_{sn}$  values (Fig. S5B). Such discrepancy highlights the limitations of using regionally averaged values for model parameters such as erodibility or runoff, and notably the necessity of taking into account the strong climatic spatial gradients observed over our study area (Fig. 1B).

Although our dataset does not display a single clear trend between  $k_{sn}$  and denudation it is consistent with the global trend delineated by other similar studies using catchment-wide denudation rates (Fig. 9). Our dataset lies at the lower end of the  
420 global distribution and overlap with data from other areas such as the Ecuadoran Andes (Vanacker et al., 2015) or Eastern Tibet (Ouimet et al., 2009). We note that the dispersion of our data around the trend, both in terms of denudation rate or  $k_{sn}$ , is similar to that of other regional datasets observed in other regional studies. As already observed-noted in the compilation of Lague (2014), incision rates present much higher values for a given steepness index range, when compared with catchment-wide denudation rates. Such systematic contrast can arise for various reasons, such as differences between integration time

425 scales of the various types of measurements or a transient landscape response associated with a partial decoupling between channels and hillslopes (e.g. Willenbring et al., 2013; Clubb et al., 2020).

## 6.2 Performance and limitations of modelling formulations

We now discuss the relative behavior of various model formulations of increasing complexity and their ability to explain the variation in denudation rates observed in our dataset. Similarly to results by Campforts et al. (2020) we observe an improvement  
430 of the predictive power between the A-SPM and R-SPM types of models (Figs. 7A and 7B), highlighting the importance of the spatial distribution of precipitation in ~~controlling that of denudation~~ modulating the efficiency of fluvial incision processes, at least in this type of context (e.g. Moon et al., 2011). ~~In contrast with many~~ (e.g. Finlayson et al., 2002; Moon et al., 2011; Ferrier et al., 2011). ~~Several~~ observations in tectonically active settings (e.g. Godard et al., 2014; Scherler et al., 2014), ~~in the absence of strong~~ have advocated for a primary control of rock uplift gradients ~~it appears that precipitation distribution can exert a significant~~  
435 ~~role in controlling denudation patterns~~ in dictating the distribution of denudation rates, which is to be expected in a steady-state landscape. Nevertheless, recent results by (Adams et al., 2020) also highlight the modulating influence of Mean Annual Precipitation on erodibility and fluvial relief in similar high uplift settings. Our results support a similar modulation by precipitation in slower evolution landscape such as the margin of the Massif Central.

In our case, using a ST-SPM setting the critical shear stress according to observations to  $\tau_c = 40$  Pa induces a clear failure  
440 of the model ~~ability~~ to reproduce the observed denudation rates (Fig. 7C), and when this parameter is set free the optimization converges toward a very low and actually negligible value (Fig. 7E), which make this model equivalent to the R-SPM case. This result highlights a clear limitation of the ST-SPM approach when compared with much simpler formulations of the Stream Power Model, in the type of relatively low-denudation context we investigate here. It is noteworthy that, in the case of the  $\tau_c$  fixed at 40 Pa, the mismatch appears to be largest for the low-relief catchments of the Loire and Garonne headwaters, while this  
445 parametrization still allows to predict denudation rates within  $\pm 20\%$  of the observed uncertainty range for a large proportion of the Cévennes and Ardèche catchments. Field measurements of bedload size show a positive correlation between  $D_{50}$  and steepness index (Fig. 5B), which would be consistent with smaller incision thresholds in low-relief areas, in contrast with the coarser bedload of the higher-relief Cévennes and Ardèche mountains.

Accounting for threshold effects was a critical element in the explanation of the non-linearity between denudation rates and  
450  $k_s^n$  observed by DiBiase and Whipple (2011), whereas in our case, it appears that a large part of the scatter and deviation from linearity is controlled by the spatial variations in runoff, discharge variability and erodibility. We note that approximately linear relationship ( $n \approx 1$ ) have been reported in other contexts with  $< 100$  mm/ka denudation rates (e.g. Ferrier et al., 2013a; Godard et al., 2019), which might play down the importance of threshold effects in explaining the variability of denudation in such settings. The next increment in model complexity is to account for possible spatial variations in bedload properties. DiBiase et al. (2018)  
455 demonstrated a direct impact ~~on landscape relief~~ of contrasts in the size distribution of sediment delivered by hillslopes to channels on landscape relief at two locations of Southern California. Attal et al. (2014) documented a power law relationship between flow competence and  $D_{50}$  along the Feather River in California, supporting the idea that the intensity of surface processes fluxes, including weathering and erosion, is a primary control on bedload size, and Shobe et al. (2018) explored

the theoretical implications of incision ~~threshold~~thresholds varying with erosion rates. Field measurements, in the area we  
460 investigate, are consistent with such dependency (Fig. 5B), and following Scherler et al. (2017), we have tested the impact of  
introducing a variable incision threshold dependent on  $k_{sn}$  (equations 13 and 3). Such parametrization yields a significantly  
better fit than the constant threshold case (Fig. 7D), in particular for some of the low-denudation catchments of the dataset, and  
allows to take into account differences in bedload size across the divide. However, this model formulation still largely under-  
predicts erosion rates for many of the low-denudation interior catchments, and as a consequence yields a fit to the observations  
465 which is still inferior to R-SPM predictions. We note that the Stochastic-Threshold Stream Power Model is built on the as-  
sumption that river incision is detachment limited and a function of bed shear stress  $\tau$ . We made many observation of exposed  
bedrock submitted to active incision processes at our sampling sites, in particular in the high relief areas ~~West~~East of the divide  
(Fig. ~~S2 and S4~~). ~~We can however~~However, we can consider the possibility that, for some of the low-denudation and low-relief  
catchment located ~~East~~West of the divide, a departure from strictly detachment-limited conditions could temporarily occur over  
470 the integration time-scale of CRN measurements in particular in relation with post-glacial changes in sediment fluxes. This  
change in behavior could be an explanation for the failure of the ST-SPM or SVT-SPM to predict observed denudation rates  
for these catchments, unless very low or negligible incision threshold is considered.

As we have shown earlier, considering  $k_{50}$  and  $q$  (equation 13) as free parameters allows to obtain an adjustment compa-  
rable to the R-SPM case. The corresponding  $D_{50}$  values are lower than present-day observations by a factor 2 but the  $\sim 0.8$   
475 exponent of the  $D_{50} - k_{sn}$  scaling is strikingly similar to observations. It is important to stress out that our denudation rates  
integrates over several 10s ka, a time frame over which important changes in bedload might have occurred, depending on nature  
and efficiency of the ~~sediment-producing hillslope processes (Marshall et al., 2015)~~. ~~In~~weathering processes responsible for  
producing sediment on hillslope (Marshall et al., 2015). Another reason which might contributes to the under-prediction of the  
 $D_{50}$  is that all the data used here come from surface bedload counts. Therefore they reflect the surface grain-size which might  
480 not be representative of the total volumetric  $D_{50}$ . At last, in order to avoid introducing too many free parameters in the model  
optimization we have used the same scaling parameters for equation 13 all over our study area. Nevertheless, it could also be  
noted that the major lithological difference between the Cévennes schists and the granitic-gneissic bedrock of the other regions,  
could have some influence on the spatial variations in bedload size. Indeed, the highly foliated and anisotropic schists produce  
sediments with a very specific shape factor, when compared to the rounded pebbles observed in Ardèche, but such difference  
485 is not resolvable from the available bedload data (Fig. 5B).

As highlighted by Campforts et al. (2020) in the Northern Andes, our results confirm the importance of documenting and  
taking into account spatial variations of environmental parameters. In our case, we observe that gradients in discharge variabil-  
ity and incision threshold, which are key parameters of the Stochastic Incision family of models, are playing an important role  
in explaining the distribution of denudation rates. A key finding of our study is the overall very good performance of R-SPM  
490 when compared with more complex formulations of the Stream Power model.

### 6.3 Importance and definition of threshold effects

Here we discuss the relative importance of incision threshold effects in a broader context by comparing our results with earlier similar studies. In order to carry out this comparison of the different settings where ST-SPM have been investigated with similar methodologies as the one we use in our study, we first compute the ratio of erosion rates  $E$  to incision threshold  $\Psi$  (Fig. 10A).

495 As discussed in Lague et al. (2005) and DiBiase and Whipple (2011) the  $E/\Psi$  ratio allows to distinguish 3 domains defining the importance of threshold effects from domain I, with low  $E/\Psi$ , where ST-SPM formulation is relevant and threshold effects are important, to domain III, and high  $E/\Psi$ , where a simple formulation such as A-SPM or R-SPM adequately describe the incision processes. Domain II is a transitional regime between these two situations. In the case of our study, we distinguish between the two scalings we have used for  $D_{50}$  calculation (Figs. 7D and 7F). We note that  $E/\Psi$  varies over 4 orders of  
500 magnitudes between these different studies. Only our results, when using the  $D_{50}$  scaling set from field observations, and the data from DiBiase and Whipple (2011) in the San Gabriel Mountains are clearly in threshold dominated regime I (Fig. 10A). It appears that all cases where the incision threshold is a free parameter for model optimization, with either a constant or variable  $\tau_c$ , fall into the transitional regime II. The two cases we consider for our Massif Central dataset illustrate the very strong influence of hypothesis made on bedload size in influencing threshold effects and associated regime, as there is a factor  
505 2 in  $D_{50}$  in values between the 2 scalings, but a corresponding order of magnitude difference in the  $E/\Psi$  ratios.

Following Lague (2014) we also consider the implications of the relative influence of incision thresholds on the recurrence time  $t_r$  for incision events (Fig. 10B), as a function of the critical normalized discharge  $Q_c^* = Q_c/\bar{Q}$  (equation 11) and the discharge variability parameter  $k$  (equation 12),

$$t_r(Q_c^*) = \Gamma(k/Q_c^*, k + 1)^{-1}, \quad (17)$$

510 where  $\Gamma$  is the incomplete Gamma function. We observe that studies where the threshold is considered as a free parameter set by model optimization imply very low  $t_r < 1$  week which, in the case of our study area in the Massif Central, is not consistent with observations of a limited number of incision events per year. Using the  $D_{50}$  scaling calibrated with field data yields  $t_r$  values of a few months for most basins, which is more realistic given the hydrologic regime of our study area.

While measurements of bedload size are relatively straightforward to acquire in the field, definition of the appropriate  $D_{50}$   
515 value to use in ST-SPM is complicated by the usual high level of dispersion in observations as illustrated by Massif Central (Fig. 5B) or San Gabriel Mountains data (DiBiase and Whipple, 2011, Fig. 6), and the high level of variability in space and time of bedload characteristics. Reliable estimates are thus difficult to obtain on  $\tau_c$ , even though the  $a = 1.5$  exponent in equation 1 implies that limited changes in  $D_{50}$  can have important implications on the magnitude of threshold effects. Some earlier studies have avoided this limitation by considering  $\tau_c$ , or the parameters involved in its calculation, as free with values defined  
520 by the model optimization over their dataset. In the case of a spatially variable  $\tau_c$ , our results illustrate a situation where using such optimization approach improve the quality of the fit to the erosion rate data (Fig. 7F vs 7D), but imply low threshold and unrealistically short return times of incision events with respect to observed present-day conditions. A key feature of our study is that we attempted to constrain every parameter involved in the models and their spatial variations, in particular for the

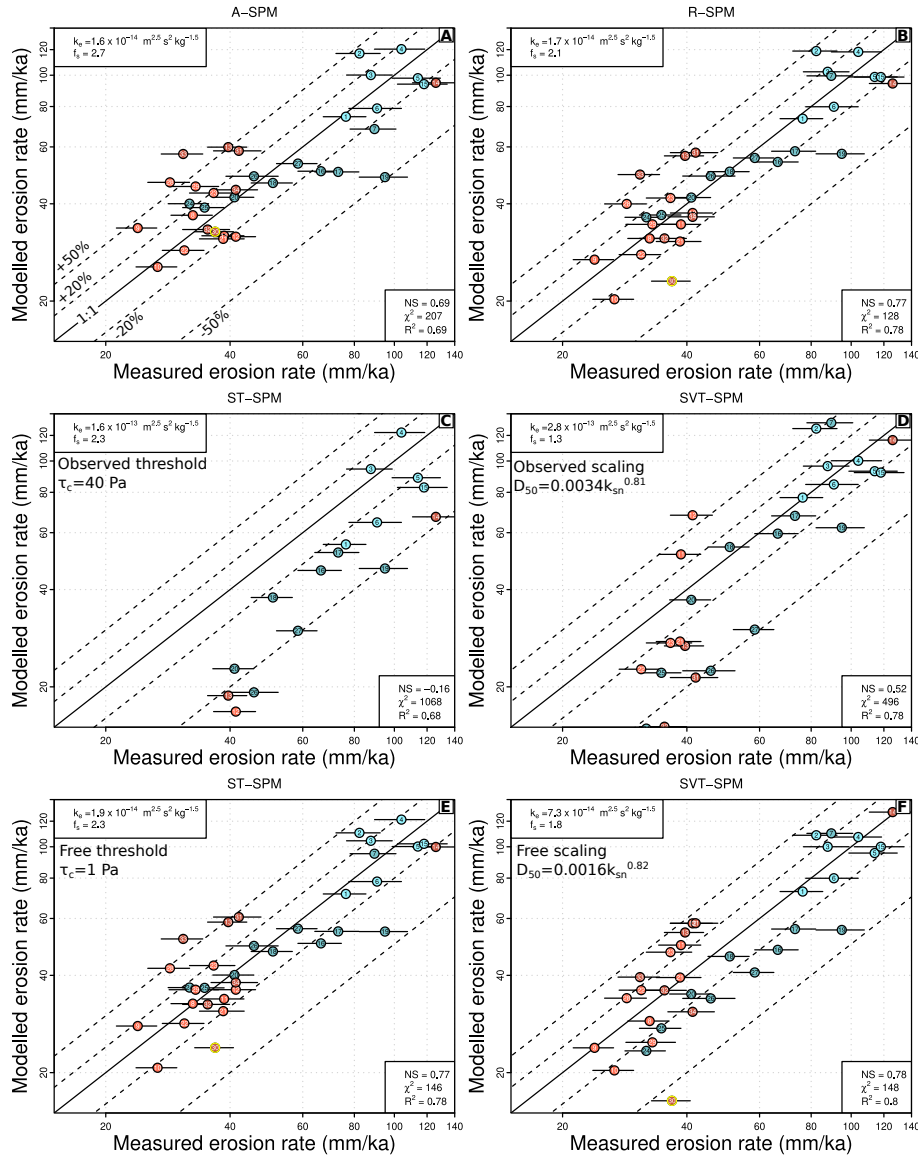
525 definition of incision thresholds. The importance of such thresholds appears to be strongly contrasted across the geomorphic and climatic gradient of the SE Massif Central.

## 7 Conclusions

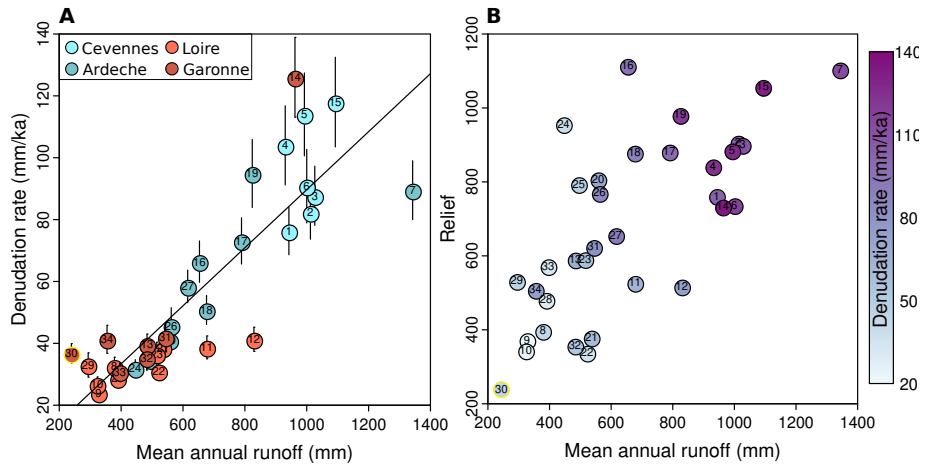
Our study contributes to the ongoing debate concerning the impact of the distribution of discharge events on river incision and landscape evolution. We provide an additional case to the handful of studies which have attempted to confront stochastic-threshold incision model to actual observations, by focusing on the singular setting of the SE margin of the Massif Central and its pronounced gradient in discharge variability. ~~From our point of view, our results stand out by the effort we put in providing~~ where we try to provide as much field-based controls as possible on all the environmental factors involved in ~~such~~ the models, and in particular their spatial variations.

Denudation rates are contrasted across our study area, and display clear co-variations with precipitation and relief. ~~Contrastingly~~ In contrast, the relationship between denudation and steepness index does not delineate a single trend, suggesting complex inter-  
535 ference between the spatial pattern of lithology and climate. A simple version of the Stream Power Model, accounting for the distribution of precipitation, perform better at reproducing observed denudation rates when compared to the more elaborate Stochastic-Threshold SPM. ~~Performances~~ The performances of such ST-SPM are critically impacted by the definition and parameterization of the incision threshold. These results raise questions about the reliability of the assumptions usually made on bedload properties in such models and the signification of their estimate from field observations, both in terms of underlying  
540 spatial variations and time integration of drastic changes in surface processes over the Late Pleistocene.

A key endeavor of quantitative geomorphology research is to provide physically-based explanation for the variability of erosion, denudation or incision rates observed at the Earth surface, accounting for landscape topographic attributes and environmental forcing of climatic or tectonic origins. The complexity of processes driving river incision has been extensively documented and explored with functional relationships attempting to capture specific mechanisms. The relative success of  
545 simpler representations in explaining landscape denudation in our study more generally suggest that the upscaling of such complex mechanistic models toward larger spatial scales requires further investigation.

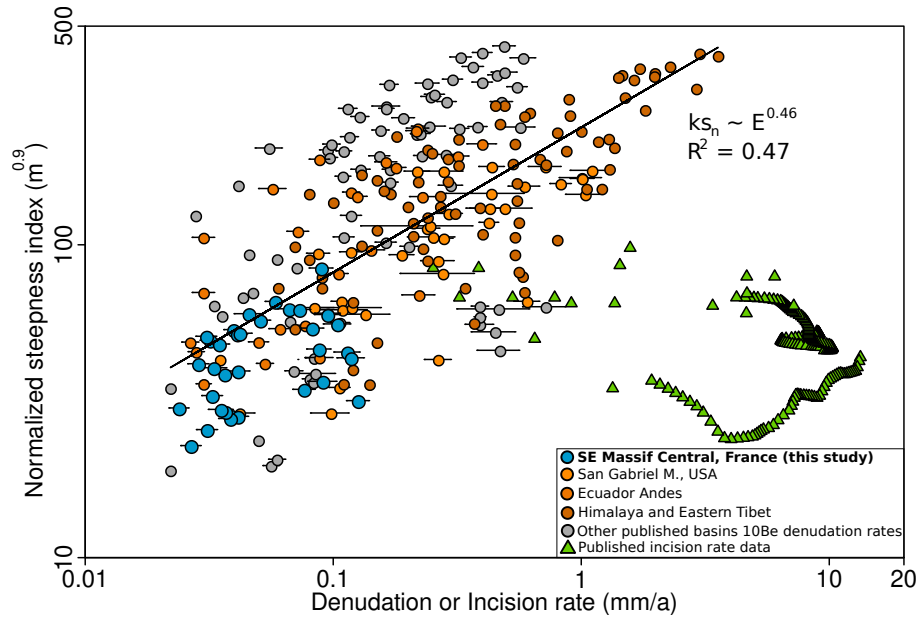


**Figure 7.** Comparison between measured and modelled denudation rates for various formulations of the stream power model. Black lines correspond to perfect match between observed and modelled denudation rates, and dashed lines indicate  $\pm 20\%$  and  $\pm 50\%$  deviations. Basin 30, with a much smaller area than the rest of the dataset is outlined in yellow. (A) Area-based stream power model (A-SPM). The erodibility coefficient  $k_e$  and modulation factor for Cévennes schists  $f_s$  are free parameters. (B) Runoff-based stream power model (R-SPM). (C) Stochastic stream power model with an imposed spatially constant threshold  $\tau_c$  (ST-SPM) defined using the mean regional average  $D_{50}$  value (equation 3 and figure 5B). (D) Stochastic stream power model, with a spatially variable threshold (SVT-SPM), scaled with  $k_{sn}$  values (equations 13 and 3). The scaling parameters are set according to [the](#) observed relationship between  $D_{50}$  and  $k_{sn}$  values on figure 5B. (E) Stochastic stream power model (same as C), but where  $\tau_c$  is a free parameter (in addition to  $k_e$  and  $f_s$ ). (F) Stochastic stream power model, with a spatially variable threshold (SVT-SPM, same as D), but where the scaling parameters  $k_{50}$  and  $q$  from equation 13 are free (in addition to  $k_e$  and  $f_s$ ).

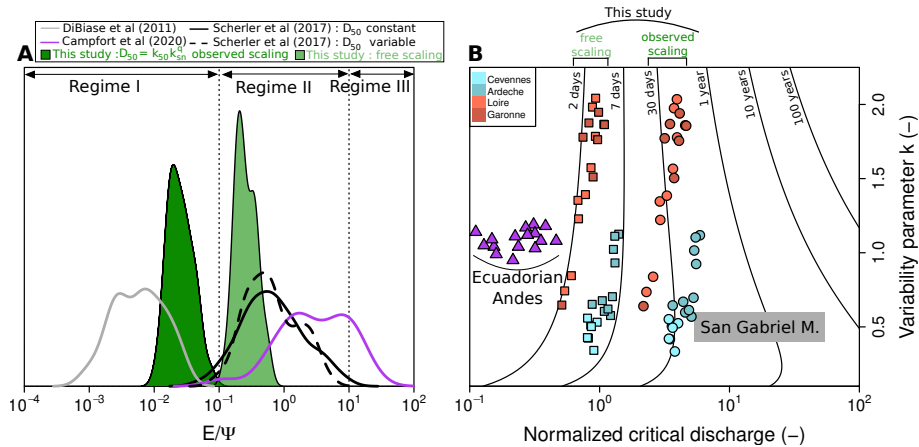


**Figure 8.** (A) Denudation rates against basins mean annual runoff calculated using the calibration of figure 4. Symbols are colored according to the 4 different subregions and black solid line is a linear fit to the data. (B) Basins relief against mean annual runoff. Symbols are colored according to the denudation rates of the basins.





**Figure 9.** Comparison between our [dataset results](#) and [other published data of datasets for](#) normalized channel steepness index ( $\theta_{ref} = 0.45$ ) [versus and](#) basin-wide denudation rate calculated from  $^{10}\text{Be}$  concentrations [and incision](#). [Incision](#) rates calculated from terraces in different climatic and tectonic contexts [are also plotted \(green triangles\)](#). Black solid line is a power law fit to the aggregated [basin-wide](#) denudation rates dataset. Original data for the Ecuadorian Andes are from Vanacker et al. (2015) as reported in Campforts et al. (2020). Original data for the San Gabriel Mountains are from DiBiase et al. (2010) as reported in DiBiase and Whipple (2011). Original data for the Himalayas and Eastern Tibet are from Scherler et al. (2014); Wobus et al. (2005); Godard et al. (2010, 2012, 2014); Finnegan et al. (2008); Ouimet et al. (2009); Harkins et al. (2007), as compiled by Scherler et al. (2017). Additional denudation data from Cyr et al. (2010) are also plotted, as well as incision rate data from Lavé and Avouac (2000, 2001); Kirby and Whipple (2001); Yanites et al. (2010).



**Figure 10.** (A) Long term measured erosion rate  $E$  normalized by incision threshold  $\Psi$  (equation 7), allowing to distinguish the various regime domains discussed in Lague et al. (2005) and DiBiase and Whipple (2011). The parameters used in the calculation ( $k_e$ ,  $\tau_c$ ) were obtained from each of the corresponding studies (DiBiase and Whipple, 2011; Scherler et al., 2017; Campforts et al., 2020). For the Ecuadorian Andes data, we use parameters listed in Campforts et al. (2020, table 4) for their variable runoff, variability and erodibility ST-SPM model (model #8). For the Himalayas and Eastern Tibet data, we use the parameters listed in Scherler et al. (2017, table 5) for their "Himalaya and Eastern Tibet TRMM models", with either constant  $D_{50}$  and constant  $\tau_c^*$  (solid black line) or variable  $D_{50}$  and constant  $\tau_c^*$  (dashed black line). Dark and light green curves correspond to our sampled basins with observed (Fig. 7D) and free (Fig. 7F)  $D_{50}$  scaling (equation 13), respectively. (B) Plot of discharge variability parameter  $k$  against normalized critical discharge  $Q_c^*$  calculated from equation 11. Black lines correspond to return time of normalized critical discharge  $t_r(Q_c^*)$  calculated from equation 17 (Lague et al., 2005; Lague, 2014). Purple triangles and grey rectangle correspond to DiBiase and Whipple (2011) and Campforts et al. (2020) results respectively, with the same model parameters as previous panel. Circles and squares correspond to our results with observed and free  $D_{50}$  scalings, respectively. The results from Scherler et al. (2017) were not plotted here, as they use a different definition of the discharge probability distribution.

*Data availability.* Geoscientific datasets such as denudation rates, morphometric and hydrological data are available in the supplementary materials.

*Team list.* Georges Aumaitre, Karim Keddadouche and Zaidi Fawzi.

550 *Author contributions.* CD and VG designed the study. CD, VG, GD, LB and JF carried out field work. CD processed the  $^{10}\text{Be}$  samples. AT performed AMS measurements. CD and VG carried out the topographic and hydrological analysis, as well as denudation rates modelling. CD, VG and DL discussed the modelling results. CD and VG wrote the article with input from other co-authors.

*Competing interests.* The authors declare that they have no conflict of interest.

555 *Acknowledgements.* This research has been supported by the Agence Nationale de la Recherche (project ANR-18-CE01-0017 (Topo-Extreme)). C. Desormeaux PhD is supported by a fellowship from the French Ministry for Higher Education. The  $^{10}\text{Be}$  measurements were performed at the ASTER AMS national facility (CEREGE, Aix en Provence) which is supported by the INSU/CNRS, the ANR through the "Projets thématiques d'excellence" program for the "Equipements d'excellence" ASTER-CEREGE action and IRD.

## References

- 560 [Adams, B. A., Whipple, K. X., Forte, A. M., Heimsath, A. M., and Hodges, K. V.: Climate controls on erosion in tectonically active landscapes, \*Science Advances\*, 6, https://doi.org/10/gjq3vs, 2020.](https://doi.org/10/gjq3vs)
- Attal, M., Mudd, S. M., Hurst, M. D., Weinman, B., Yoo, K., and Naylor, M.: Impact of change in erosion rate and landscape steepness on hillslope and fluvial sediments grain size in the Feather River Basin (Sierra Nevada, California), *Earth Surface Dynamics*, 2, 1047–1092, <https://doi.org/10/gjq4fv>, 2014.
- 565 Balco, G., Stone, J. O., Lifton, N. a., and Dunai, T. J.: A complete and easily accessible means of calculating surface exposure ages or erosion rates from  $^{10}\text{Be}$  and  $^{26}\text{Al}$  measurements, *Quaternary Geochronology*, 3, 174–195, <https://doi.org/10/fqdvm9>, ISBN: 1871-1014, 2008.
- Campforts, B., Vanacker, V., Herman, F., Vanmaercke, M., Schwanghart, W., Tenorio, G. E., Willems, P., and Govers, G.: Parameterization of river incision models requires accounting for environmental heterogeneity: insights from the tropical Andes, *Earth Surface Dynamics*, 8, 447–470, <https://doi.org/10/gjq4mv>, 2020.
- 570 Carretier, S., Regard, V., Vassallo, R., Aguilar, G., Martinod, J., Riquelme, R., Pepin, E., Charrier, R., Herail, G., Farias, M., Guyot, J.-L., Vargas, G., and Lagane, C.: Slope and climate variability control of erosion in the Andes of central Chile, *Geology*, 41, 195–198, <https://doi.org/10/f4m8kg>, 2013.
- Clauset, A., Shalizi, C. R., and Newman, M. E. J.: Power-law distributions in empirical data., *SIAM Review*, 51, 43, <https://doi.org/10/fgf37h>, arXiv: 0706.1062v2 ISBN: 9780769531762, 2007.
- 575 Clubb, F. J., Mudd, S. M., Hurst, M. D., and Grieve, S. W.: Differences in channel and hillslope geometry record a migrating uplift wave at the Mendocino triple junction, California, USA, *Geology*, 48, 184–188, <https://doi.org/10/gjq4kr>, 2020.
- Cyr, A. J., Granger, D. E., Olivetti, V., and Molin, P.: Quantifying rock uplift rates using channel steepness and cosmogenic nuclide-determined erosion rates: Examples from northern and southern Italy, *Lithosphere*, 2, 188–198, <https://doi.org/10/cgwdxpx>, publisher: Geological Society of America, 2010.
- Deal, E., Botter, G., and Braun, J.: Understanding the role of rainfall and hydrology in determining fluvial erosion efficiency, *Journal of Geophysical Research: Earth Surface*, <https://doi.org/10/gdksbd>, 2018.
- 580 [Dezileau, L., Terrier, B., Berger, J. F., Blanchemanche, P., Latapie, A., Freyrier, R., Bremond, L., Paquier, A., Lang, M., and Delgado, J. L.: A multidating approach applied to historical slackwater flood deposits of the Gardon River, SE France, \*Geomorphology\*, 214, 56–68, https://doi.org/10.1016/j.geomorph.2014.03.017, 2014.](https://doi.org/10.1016/j.geomorph.2014.03.017)
- 585 DiBiase, R. A. and Whipple, K. X.: The influence of erosion thresholds and runoff variability on the relationships among topography, climate, and erosion rate, *Journal of Geophysical Research*, 116, F04 036, <https://doi.org/10/cnkkht>, publisher: American Geophysical Union, 2011.
- DiBiase, R. A., Whipple, K. X., Heimsath, A. M., and Ouimet, W. B.: Landscape form and millennial erosion rates in the San Gabriel Mountains, CA, *Earth and Planetary Science Letters*, 289, 134–144, <https://doi.org/10/c9k6gm>, 2010.
- 590 DiBiase, R. A., Rossi, M. W., and Neely, A. B.: Fracture density and grain size controls on the relief structure of bedrock landscapes, *Geology*, 46, 1–14, <https://doi.org/10/gdh5g8>, 2018.
- Dietrich, W. E., Bellugi, D. G., Sklar, L. S., Stock, J. D., Heimsath, A. M., and Roering, J. J.: Geomorphic transport laws for predicting landscape form and dynamics, in: *Prediction in Geomorphology*, edited by Wilcock, P. R. and Iverson, R. M., vol. 135, pp. 103–132, American Geophysical Union, Washington, D. C., <https://doi.org/10.1029/GM135>, series Title: Geophysical Monograph Series ISSN: 0065-8448, 2003.

- 595 [Ferrier, K. L., Huppert, K. L., and Perron, J. T.: Climatic control of bedrock river incision., \*Nature\*, 496, 206–209, https://doi.org/10/f4skdn, publisher: Nature Publishing Group, a division of Macmillan Publishers Limited. All Rights Reserved., 2013a.](https://doi.org/10/f4skdn)
- [Ferrier, K. L., Taylor Perron, J., Mukhopadhyay, S., Rosener, M., Stock, J. D., Huppert, K. L., and Slosberg, M.: Covariation of climate and long-term erosion rates across a steep rainfall gradient on the Hawaiian island of Kaua'i, \*Bulletin of the Geological Society of America\*, 125, 1146–1163, https://doi.org/10/f47sbz, iISBN: 0016-7606, 2013b.](https://doi.org/10/f47sbz)
- 600 [Finlayson, D. P., Montgomery, D. R., and Hallet, B.: Spatial coincidence of rapid inferred erosion with young metamorphic massifs in the Himalayas, \*Geology\*, 30, 219–222, https://doi.org/10/cfptng, publisher: Geological Society of America, 2002.](https://doi.org/10/cfptng)
- Finnegan, N. J., Hallet, B., Montgomery, D. R., Zeitler, P. K., Stone, J. O., Anders, a. M., and Yuping, L.: Coupling of rock uplift and river incision in the Namche Barwa-Gyala Peri massif, Tibet, *Geological Society of America Bulletin*, 120, 142–155, https://doi.org/10/drkgj3, 2008.
- 605 Fisher, G. B., Amos, C. B., Bookhagen, B., Burbank, D. W., and Godard, V.: Channel widths, landslides, faults, and beyond: The new world order of high-spatial resolution Google Earth imagery in the study of earth surface processes, *Geological Society of America Special Papers*, 492, 1–22, publisher: Geological Society of America, Incorporated, 2012.
- Gasparini, N. M. and Brandon, M. T.: A generalized power law approximation for fluvial incision of bedrock channels, *Journal of Geophysical Research*, 116, F02 020, https://doi.org/10/bfmhzb, 2011.
- 610 Gob, F., Bilodeau, C., Thommeret, N., Belliard, J., Albert, M.-B., Tamisier, V., Baudoin, J.-M., and Kreutzenberger, K.: A tool for the characterisation of the hydromorphology of rivers in line with the application of the European Water Framework Directive in France (CARHYCE), *Géomorphologie : relief, processus, environnement*, 20, 57–72, https://doi.org/10/gksccm, iISBN: 9782913282636 Number: 1 Publisher: Groupe français de géomorphologie, 2014.
- Godard, V., Lavé, J., Carcaillet, J., Cattin, R., Bourlès, D., and Zhu, J.: Spatial distribution of denudation in Eastern Tibet and regressive erosion of plateau margins, *Tectonophysics*, 491, 253–274, https://doi.org/10/bc6wxx, 2010.
- 615 Godard, V., Burbank, D. W., Bourlès, D. L., Bookhagen, B., Braucher, R., and Fisher, G. B.: Impact of glacial erosion on 10Be concentrations in fluvial sediments of the Marsyandi catchment, central Nepal, *Journal of Geophysical Research*, 117, F03 013, https://doi.org/10/gjq34c, publisher: American Geophysical Union, 2012.
- Godard, V., Bourles, D. L., Spinabella, F., Burbank, D. W., Bookhagen, B., Fisher, G. B., Moulin, A., and Leanni, L.: Dominance of tectonics over climate in Himalayan denudation, *Geology*, 42, 243–246, https://doi.org/10/f5vt28, 2014.
- 620 [Godard, V., Dosseto, A., Fleury, J., Bellier, O., Siame, L., and ASTER, T.: Transient landscape dynamics across the Southeastern Australian Escarpment, \*Earth and Planetary Science Letters\*, 506, 397–406, https://doi.org/10/gjq4kj, publisher: Elsevier B.V., 2019.](https://doi.org/10/gjq4kj)
- Harel, M.-a., Mudd, S., and Attal, M.: Global analysis of the stream power law parameters based on worldwide 10Be denudation rates, *Geomorphology*, 268, 184–196, https://doi.org/10/f3tx7d, publisher: Elsevier B.V., 2016.
- 625 Harkins, N., Kirby, E., Heimsath, A., Robinson, R., and Reiser, U.: Transient fluvial incision in the headwaters of the Yellow River, north-eastern Tibet, China, *Journal of Geophysical Research*, 112, F03S04, https://doi.org/10/bhvjtr, 2007.
- Howard, A. D.: A detachment-limited model of drainage basin evolution, *Water Resources Research*, 30, 2261–2285, https://doi.org/10/fcww88, 1994.
- Howard, A. D., Dietrich, W. E., and Seidl, M. A.: Modeling fluvial erosion on regional to continental scales, *Journal of Geophysical Research*, 99, 13 971–13 986, https://doi.org/10/bd8k3j, publisher: American Geophysical Union, 1994.
- 630 Joly, D., Brossard, T., Cardot, H., Cavailhes, J., Hilal, M., and Wavresky, P.: Types of climates on continental France, a spatial construction, *Cybergeo*, pp. 1–25, https://doi.org/10/bzjfcc, 2010.

- Kirby, E. and Ouimet, W.: Tectonic geomorphology along the eastern margin of Tibet: insights into the pattern and processes of active deformation adjacent to the Sichuan Basin, Geological Society, London, Special Publications, 353, 165–188, <https://doi.org/10/fvr6td>, 2011.
- 635 Kirby, E. and Whipple, K.: Quantifying differential rock-uplift rates via stream profile analysis, *Geology*, 29, 415–418, <https://doi.org/10/fcwk4j>, publisher: Geological Society of America, 2001.
- Kirby, E. and Whipple, K. X.: Expression of active tectonics in erosional landscapes, *Journal of Structural Geology*, 44, 54–75, <https://doi.org/10/f4gm5d>, 2012.
- 640 Lague, D.: The stream power river incision model: Evidence, theory and beyond, *Earth Surface Processes and Landforms*, 39, 38–61, <https://doi.org/10/f5nmzj>, 2014.
- Lague, D., Hovius, N., and Davy, P.: Discharge, discharge variability, and the bedrock channel profile, *Journal of Geophysical Research*, 110, F04006, <https://doi.org/10/bq8zjr>, publisher: American Geophysical Union, 2005.
- Lavé, J. and Avouac, J. P.: Active folding of fluvial terraces across the Siwaliks Hills, Himalayas of central Nepal, *Journal of Geophysical Research*, 105, 5735–5770, <https://doi.org/10/c8h7t8>, 2000.
- 645 Lavé, J. and Avouac, J. P.: Fluvial incision and tectonic uplift across the Himalayas of central Nepal, *Journal of Geophysical Research*, 106, 26561–26591, <https://doi.org/10/fm9x57>, 2001.
- Le Lay, M. and Saulnier, G. M.: Exploring the signature of climate and landscape spatial variabilities in flash flood events: Case of the 8-9 September 2002 Cévennes-Vivarais catastrophic event, *Geophysical Research Letters*, 34, n/a–n/a, <https://doi.org/10/dv9qms>, ISBN: 0094-8276, 2007.
- 650 [Malcles, O., Vernant, P., Chéry, J., Camps, P., Cazes, G., Ritz, J.-F., and Fink, D.: Determining the Plio-Quaternary uplift of the southern French Massif Central: a new insight for intraplate orogen dynamics, \*Solid Earth\*, 11, 241–258, <https://doi.org/10/gnp8n7>, 2020.](https://doi.org/10/gnp8n7)
- Marshall, J. A., Roering, J. J., Bartlein, P. J., Gavin, D. G., Granger, D. E., Rempel, A. W., Praskievicz, S. J., and Hales, T. C.: Frost for the trees : Did climate increase erosion in unglaciated landscapes during the late Pleistocene ?, *Science Advances*, <https://doi.org/10/gddtwz>, 2015.
- 655 Mazzotti, S., Jomard, H., and Masson, F.: Processes and deformation rates generating seismicity in metropolitan France and conterminous Western Europe, *BSGF - Earth Sciences Bulletin*, 191, 19, <https://doi.org/10/gmsrkp>, 2020.
- Mocochain, L., Audra, P., Clauzon, G., Bellier, O., Bigot, J.-Y., Parize, O., and Monteil, P.: The effect of river dynamics induced by the Messinian Salinity Crisis on karst landscape and caves: Example of the Lower Ardèche river (mid Rhône valley), *Geomorphology*, 106, 46–61, <https://doi.org/10/dt9rfg>, 2009.
- 660 Molliex, S., Rabineau, M., Leroux, E., Bourlès, D., Authemayou, C., Aslanian, D., Chauvet, F., Civet, F., and Jouët, G.: Multi-approach quantification of denudation rates in the Gulf of Lion source-to-sink system (SE France), *Earth and Planetary Science Letters*, 444, 101–115, <https://doi.org/10/gjq4fj>, publisher: Elsevier B.V., 2016.
- Molnar, P., Anderson, R. S., Kier, G., and Rose, J.: Relationships among probability distributions of stream discharges in floods, climate, bed load transport, and river incision, *Journal of Geophysical Research: Earth Surface*, 111, F02001, <https://doi.org/10/csczpw>, publisher: American Geophysical Union, 2006.
- 665 Moon, S., Page Chamberlain, C., Blisniuk, K., Levine, N., Rood, D. H., and Hilley, G. E.: Climatic control of denudation in the deglaciated landscape of the Washington Cascades, *Nature Geoscience*, 4, 469–473, <https://doi.org/10/cpgp5v>, publisher: Nature Publishing Group, a division of Macmillan Publishers Limited. All Rights Reserved., 2011.

- 670 [Naulet, R., Lang, M., Ouarda, T. B., Coeur, D., Bobée, B., Recking, A., and Moussay, D.: Flood frequency analysis on the Ardèche river using French documentary sources from the last two centuries, \*Journal of Hydrology\*, 313, 58–78, <https://doi.org/10/d7jp73>, 2005.](#)
- Niemi, N. A., Oskin, M., Burbank, D. W., Heimsath, A. M., and Gabet, E. J.: Effects of bedrock landslides on cosmogenically determined erosion rates, *Earth and Planetary Science Letters*, 237, 480–498, <https://doi.org/10/djng4f>, 2005.
- Olivetti, V., Godard, V., Bellier, O., Team, A., and ASTER, T.: Cenozoic rejuvenation events of Massif Central topography (France): Insights from cosmogenic denudation rates and river profiles, *Earth and Planetary Science Letters*, 444, 179–191, <https://doi.org/10/f8n5k7>, publisher: Elsevier B.V., 2016.
- 675 [Olivetti, V., Balestrieri, M. L., Godard, V., Bellier, O., Gautheron, C., Valla, P. G., Zattin, M., Faccenna, C., Pinna-Jamme, R., and Manchuel, K.: Cretaceous and late Cenozoic uplift of a Variscan Massif: The case of the French Massif Central studied through low-temperature thermochronometry, \*Lithosphere\*, 12, 133–149, <https://doi.org/10/gn2mgv>, 2020.](#)
- 680 Ouimet, W. B., Whipple, K. X., and Granger, D. E.: Beyond threshold hillslopes: Channel adjustment to base-level fall in tectonically active mountain ranges, *Geology*, 37, 579–582, <https://doi.org/10/c36k7n>, publisher: Geological Society of America, 2009.
- Perron, J. T. and Royden, L.: An integral approach to bedrock river profile analysis, *Earth Surface Processes and Landforms*, 38, 570–576, <https://doi.org/10/f4wdkp>, 2012.
- 685 [Ritz, J.-F., Baize, S., Ferry, M., Larroque, C., Audin, L., Delouis, B., and Mathot, E.: Surface rupture and shallow fault reactivation during the 2019 Mw 4.9 Le Teil earthquake, France, \*Communications Earth & Environment\*, 1, 10, <https://doi.org/10/ghbhsj>, 2020.](#)
- Roberts, G. G. and White, N.: Estimating uplift rate histories from river profiles using African examples, *Journal of Geophysical Research*, 115, B02406, <https://doi.org/10/b3wrqz>, 2010.
- Schaller, M., von Blanckenburg, F., Hovius, N., and Kubik, P.: Large-scale erosion rates from in situ-produced cosmogenic nuclides in European river sediments, *Earth and Planetary Science Letters*, 188, 441–458, <https://doi.org/10/b73d2h>, 2001.
- 690 Schaller, M., von Blanckenburg, F., Veldkamp, A., Tebbens, L., Hovius, N., and Kubik, P.: A 30 000 yr record of erosion rates from cosmogenic <sup>10</sup>Be in Middle European river terraces, *Earth and Planetary Science Letters*, 204, 307–320, <https://doi.org/10/fsm3v4>, 2002.
- Scherler, D., Bookhagen, B., and Strecker, M. R.: Tectonic control on <sup>10</sup>Be derived erosion rates in the Garhwal Himalaya, India, *Journal of Geophysical Research: Earth Surface*, 119, 1–23, <https://doi.org/10/gjq342>, 2014.
- Scherler, D., DiBiase, R. A., Fisher, G. B., and Avouac, J.-P.: Testing monsoonal controls on bedrock river incision in the Himalaya and Eastern Tibet with a stochastic-threshold stream power model, *Journal of Geophysical Research: Earth Surface*, 122, 1389–1429, <https://doi.org/10/gbsv9h>, 2017.
- 695 [Sheffer, N. A., Enzel, Y., Benito, G., Grodek, T., Poart, N., Lang, M., Naulet, R., and Coeur, D.: Paleofloods and historical floods of the Ardèche River, France, \*Water Resources Research\*, 39, 1–13, <https://doi.org/10/dv7w7z>, 2003.](#)
- Shobe, C. M., Tucker, G. E., and Rossi, M. W.: Variable-Threshold Behavior in Rivers Arising From Hillslope-Derived Blocks, *Journal of Geophysical Research: Earth Surface*, pp. 1–27, <https://doi.org/10/gdvpjx>, 2018.
- 700 Sklar, L. and Dietrich, W. E.: Sediment and rock strength controls on river incision into bedrock, *Geology*, 29, 1087–1090, [https://doi.org/10.1130/0091-7613\(2001\)029<1087:SARSCO>2.0.CO](https://doi.org/10.1130/0091-7613(2001)029<1087:SARSCO>2.0.CO), ISBN: 0091-7613, 2001.
- Sklar, L. S. and Dietrich, W. E.: The role of sediment in controlling steady-state bedrock channel slope: Implications of the saltation-abrasion incision model, *Geomorphology*, 82, 58–83, <https://doi.org/10/cndm3c>, ISBN: 0169-555X, 2006.
- 705 Snyder, N. P., Whipple, K. X., Tucker, G. E., and Merritts, D. J.: Importance of a stochastic distribution of floods and erosion thresholds in the bedrock river incision problem, *Journal of Geophysical Research*, 108, 2117, <https://doi.org/10/fnsb3r>, publisher: American Geophysical Union, 2003.

- Tassy, A., Mocochain, L., Bellier, O., Braucher, R., Gattacceca, J., and Bourlès, D.: Coupling cosmogenic dating and magnetostratigraphy to constrain the chronological evolution of peri-Mediterranean karsts during the Messinian and the Pliocene: Example of Ardèche Valley, Southern France, *Geomorphology*, 189, 81–92, <https://doi.org/10/f4xdt2>, publisher: Elsevier B.V., 2013.
- 710 Tucker, G. E. and Bras, R. L.: A stochastic approach to modeling the role of rainfall variability in drainage basin evolution, *Water Resources Research*, 36, 1953–1964, <https://doi.org/10/fm29p>, publisher: American Geophysical Union, 2000.
- Turowski, J. M., Lague, D., and Hovius, N.: Cover effect in bedrock abrasion: A new derivation and its implications for the modeling of bedrock channel morphology, *Journal of Geophysical Research: Earth Surface*, 112, 1–16, <https://doi.org/10/d5tszp>, ISBN: 0148-0227, 715 2007.
- Vanacker, V., von Blanckenburg, F., Govers, G., Campforts, B., Molina, A., and Kubik, P.: Transient river response, captured by the channel steepness and its concavity, *Geomorphology*, 228, 234–243, <https://doi.org/10/f6v3fh>, publisher: Elsevier B.V., 2015.
- Whipple, K. X. and Tucker, G. E.: Dynamics of the stream-power river incision model: Implications for height limits of mountain ranges, landscape response timescales, and research needs, *Journal of Geophysical Research*, 104, 17 661–17 674, <https://doi.org/10/brj8r8>, publisher: American Geophysical Union, 1999.
- 720 Whipple, K. X. and Tucker, G. E.: Implications of sediment-flux-dependent river incision models for landscape evolution, *Journal of Geophysical Research*, 107, 2039, <https://doi.org/10/c453m8>, publisher: American Geophysical Union ISBN: 1999101029, 2002.
- Whipple, K. X., Hancock, G. S., and Anderson, R. S.: River incision into bedrock: Mechanics and relative efficacy of plucking, abrasion, and cavitation, *Bulletin of the Geological Society of America*, 112, 490–503, [https://doi.org/10.1130/0016-7606\(2000\)112<490:RIIBMA>2.0.CO](https://doi.org/10.1130/0016-7606(2000)112<490:RIIBMA>2.0.CO), ISBN: 0016-7606, 2000.
- 725 Whittaker, A. C.: How do landscapes record tectonics and climate?, *Lithosphere*, 4, 160–164, <https://doi.org/10/gcpz66>, 2012.
- Willenbring, J. K., Gasparini, N. M., Crosby, B. T., and Brocard, G.: What does a mean mean? The temporal evolution of detrital cosmogenic denudation rates in a transient landscape, *Geology*, 41, 1215–1218, <https://doi.org/10/f5pcf9>, 2013.
- Wobus, C., Heimsath, A., Whipple, K., and Hodges, K.: Active out-of-sequence thrust faulting in the central Nepalese Himalaya., *Nature*, 730 434, 1008–1011, <https://doi.org/10/dr6shw>, 2005.
- Wobus, C., Whipple, K. X., Kirby, E., Snyder, N. P., Johnson, J., Spyropoulou, K., Crosby, B., and Sheehan, D.: Tectonics from topography: Procedures, promise, and pitfalls, *Geological Society of America Special Papers*, 398, 55–74, <https://doi.org/10/dbp5tg>, publisher: Geological Society of America ISBN: 0-8137-2398-1, 2006.
- Yanites, B. J., Tucker, G. E., and Anderson, R. S.: Numerical and analytical models of cosmogenic radionuclide dynamics in landslide-dominated drainage basins, *Journal of Geophysical Research*, 114, F01 007, <https://doi.org/10/c9kgds>, publisher: American Geophysical Union, 2009.
- 735 Yanites, B. J., Tucker, G. E., Mueller, K. J., Chen, Y.-G., Wilcox, T., Huang, S.-Y., and Shi, K.-W.: Incision and channel morphology across active structures along the Peikang River, central Taiwan: Implications for the importance of channel width, *Geological Society of America Bulletin*, 122, 1192–1208, <https://doi.org/10/c3mkc6>, 2010.