

A new tool to define multiscale bedform characteristics from bed elevation data

Judith Y. Zomer¹, Suleyman Naqshband¹, and Antonius J. F. Hoitink¹

¹Department of Environmental Sciences, Hydrology and Quantitative Water Management Group, Wageningen University & Research, Wageningen, Netherlands

Correspondence: Judith Zomer (judith.zomer@wur.nl)

Abstract. Systematic identification and characterization of bedforms from bathymetric data are crucial in many studies of fluvial processes. Automated and accurate processing of bed elevation data is challenging where dune fields are complex, irregular and, especially, where multiple scales co-exist. Here, we introduce a new tool to quantify dune properties from bathymetric data representing large primary and smaller, superimposed, secondary dunes. A first step in the procedure is to decompose the bathymetric data using a LOESS algorithm. Steep lee side slopes of primary dunes are preserved by implementing objective breaks in the algorithm, accounting for discontinuities in the bed elevation profiles at the toe of the lee side slope. The steep lee slopes are then approximated by fitting a sigmoid function. Following the decomposition of the bathymetric data, bedforms are identified based on zero-crossing, and morphological properties are calculated. The approach to bedform decomposition presented herein is particularly applicable where secondary dunes are large and thus filtering using conventional continuously differentiable functions could easily lead to undesired smoothing of the primary morphology. Application of the tool to two bathymetric maps demonstrates that it successfully decomposes bathymetric data, identifies primary and secondary dunes, and preserves steeper lee side slopes of primary dunes.

1 Introduction

Dunes are rhythmic features that develop at the interface of a flow field and a mobile bed. In fluvial environments, dunes play an important role in various flow and transport processes, on multiple scales. Flow separation downstream of steep dunes opposes the mean flow, increasing hydraulic roughness (Maddux et al., 2003b, a). Moreover, turbulent flow structures generated over dunes play a key role in the generation of instantaneous bed shear stresses and bedload sediment movement and resuspension (Nelson et al., 1993, 1995; McLean et al., 1999; Cellino and Graf, 2000; Bradley et al., 2013). In river management, bedform dynamics are of interest for fairway navigability, flood risk protection and stability of infrastructure. As a result, over the past decades, fluvial dunes have been a subject of extensive research.

Systematic identification and characterization of dunes from bed elevation scans greatly aid these research efforts. Examples are field and flume studies which investigate the development of dunes under a range of conditions (Bradley and Venditti, 2017; Reesink et al., 2018; Venditti et al., 2016; Cisneros et al., 2020; Naqshband and Hoitink, 2020; Wilbers and Ten Brinke, 2003; Chen et al., 2012). Understanding and predicting the relationship between hydrodynamics and dune characteristics is of vital

25 importance for operational modelling and flood risk assessments. Similarly, field and flume studies aim to discover how dune characteristics impact the mean and turbulent flow field, and the associated sediment dynamics (Kwoll et al., 2016; Lefebvre et al., 2016; Parsons et al., 2005; Best and Kostaschuk, 2002; Bradley et al., 2013). Based on dune shape and migration speed, observed in the field, bedload sediment transport can be quantified (Abraham et al., 2011; McElroy and Mohrig, 2009; Simons et al., 1965). Each of these research fields requires dune identification and characterization, which are particularly challenging
30 where dunes fields are complex, irregular and where multiple scales co-exist.

In fluvial systems, two scales of dunes often co-exist: larger, primary dunes and small, secondary dunes that are superimposed on the primary dunes. The secondary bedforms have long been considered an attribute of primary dunes, converting simple dunes into compound dunes (Ashley, 1990). Recent studies have shed light on the relevance of the small bedforms, which have been observed in river systems worldwide (Carling et al., 2000; Cisneros et al., 2020; Galeazzi et al., 2018; Harbor, 1998; Parsons et al., 2005; Wilbers and Ten Brinke, 2003; Zomer et al., 2021). Secondary bedforms are not limited to the primary dune stoss, but can migrate over of the full length of the primary bedform (Galeazzi et al., 2018; Zomer et al., 2021). They possess steep lee side angles which are likely to influence the total roughness, and to affect primary dune development as well (Reesink and Bridge, 2007). The bedload transport associated with secondary bedform migration is similar to that associated with primary dunes, due to their high migration speed (Zomer et al., 2021; Venditti et al., 2005). The expected increase of
40 spatial and temporal resolution of bathymetric data sets further stimulates research on this smallest dune scale.

Various methods to quantify dune morphology have been developed (van Dijk et al., 2008; Gutierrez et al., 2013; Cisneros et al., 2020; Scheiber et al., 2021; Van der Mark and Blom, 2007; Wang et al., 2020; Lefebvre et al., 2021). In dealing with multiple scales of bedforms, several methods isolate bedforms based on size (Cisneros et al., 2020; Scheiber et al., 2021). This may not be suitable where the primary dune scale is fully covered by secondary dunes (Galeazzi et al., 2018; Zomer et al., 2021). Other methods apply filtering based on geostatistics (van Dijk et al., 2008), spectral methods (van Dijk et al., 2008; Cazenave et al., 2013; Lee et al., 2021) or spline functions following spectral analysis (Gutierrez et al., 2013; Wang et al., 2020). When using spectral filters, the reconstruction of the asymmetric shapes of high-angle dunes cannot do without high-frequency base functions, which are removed in the filtering process, in turn leading to a misrepresentation of the steep lee side slope in the lowpass filtered signal (Lee et al., 2021). Also in other filtering methods, a high degree of smoothing, which
50 is inevitable in the presence of larger secondary bedforms, significantly affects the primary lee side slope, leading to missing secondary bedforms on the lee side, or at the least significant underestimation of the lee side slopes. Smoothing filter might also distort the morphology of secondary bedforms if the highpass filtered signal used for the characterisation of secondary bedforms.

In this study we develop a new tool to quantify bedform characteristics from bathymetric data representing multiple scales.
55 The initial bedform identification is based on zero-crossing after decomposition of the bathymetric data. A LOESS algorithm is used to fit the irregular larger scale morphology, including the primary dunes. LOESS regression is a nonparametric technique that uses local weighted regression to fit a smooth curve through points in a scatter plot. The approach differs from previous methods (van Dijk et al., 2008; Cazenave et al., 2013; Gutierrez et al., 2013; Wang et al., 2020; Lee et al., 2021), in that no continuously differentiable function is fitted, but rather breaks are implemented. These breaks in the LOESS fit are used to

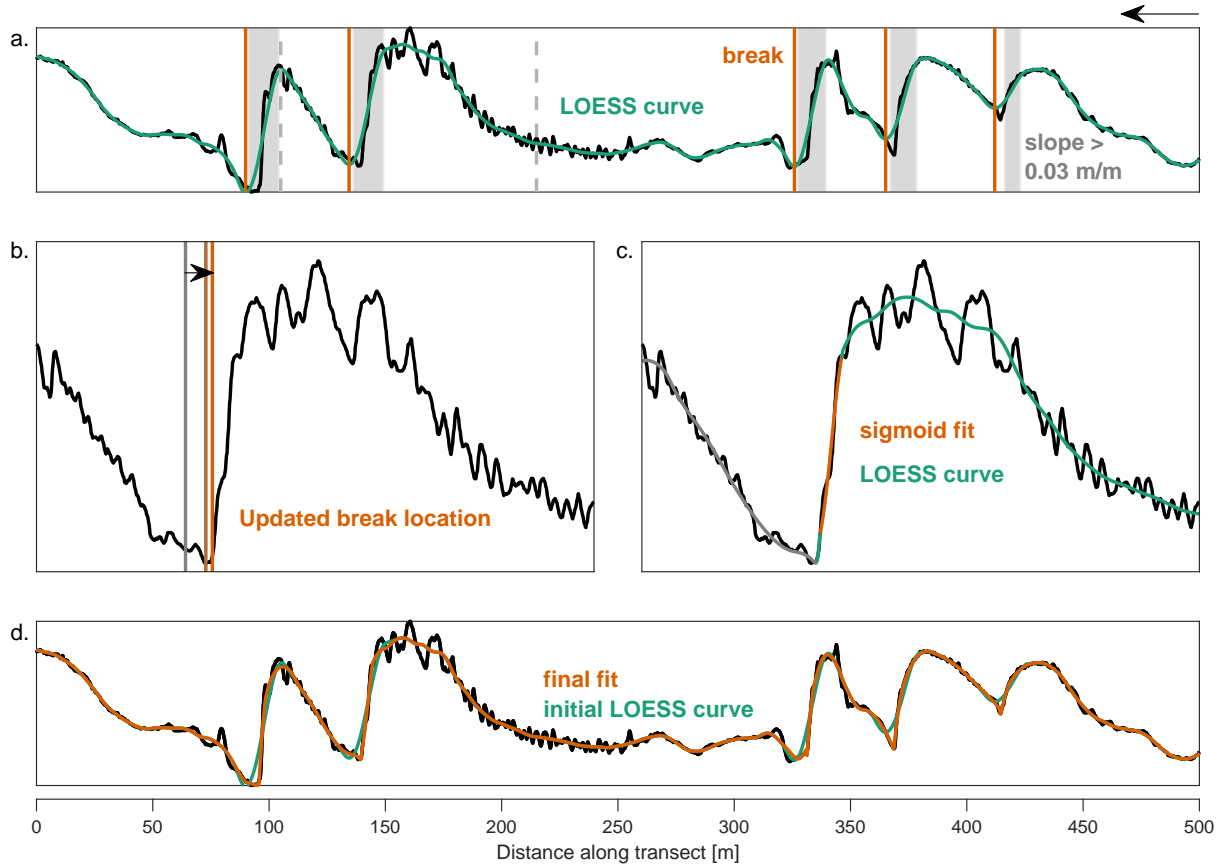


Figure 1. Schematic overview of the tool. a: Bed elevation series with the initial LOESS-based smoothed curve. The gray areas indicate where the lee slope in the LOESS curve exceeds 0.03 m m^{-1} , and the corresponding breaks are indicated with vertical lines. b: Break locations after updating. c: A sigmoid function is fitted to the lee side slope. d: The bathymetric signal with the initial LOESS curve and final result.

60 avoid smoothing of steep primary lee side slopes that contain an abrupt transition from the lee side slope to the dune trough. These steep lee slopes are approximated with a sigmoid function. The tool is applied to two bathymetric data sets to illustrate the method.

2 Methods

The first step in the procedure is to decompose bed elevation profiles (BEPs) into a signal representing secondary bedforms and the remainder, which includes the primary dunes. This step builds on the previously described method to decompose bed
65 elevation profiles by Zomer et al. (2021). The decomposition is described in section 2.1. Subsequently, secondary and primary

bedforms are identified based on zero-crossing, which is described in section 2.2. In Section 2.3, the new tool is applied to two data sets.

2.1 Decomposition of bed elevation data representing multiple bedform scales

70 A LOESS curve is fitted to the data to separate the secondary bedforms from the underlying morphology (Greenslade et al., 1997; Schlax and Chelton, 1992). At steep primary leesides, with slopes exceeding a user-defined threshold, breaks are introduced and a sigmoid function is fitted to the corresponding primary lee side using a least-squares routing. First, the LOESS algorithm and sigmoid function are explained in further detail, then the subsequent steps in the method are provided.

By fitting the LOESS curve, each optimized value is given by a weighted quadratic least squares regression to a local subset
75 of the data. So, for each grid point in a bed elevation profile (x_0), a local estimate \hat{z} is found through a locally weighted least squares fit of a function of x , applied to N data points near x_0 (Greenslade et al., 1997):

$$\hat{z} = a_1 + a_2x + a_3x^2. \quad (1)$$

The coefficients a_1 , a_2 , and a_3 are found minimizing the function

$$\Phi = \frac{1}{W} \sum_{j=1}^N w_j^2 (\hat{z} - z)^2, \quad (2)$$

80 where W is the sum of weights w_j . The weights w_j are defined as

$$w_j = \begin{cases} (1 - q_j^3)^3, & 0 \leq q_j \leq 1 \\ 0 & q_j > 1 \end{cases} \quad (3)$$

$$q_j = \left(\frac{x_j - x_0}{d_x} \right)^2, \quad (4)$$

where d_x is the half-span of the smoother.

85 The sigmoid function that is fitted to dune lee sides is defined as

$$\hat{z} = b_1 + \frac{b_2}{1 + e^{-b_3(x-b_4)}}. \quad (5)$$

The coefficients are found by minimizing

$$\Phi = \sum_{i=1}^N (\hat{z}_i - z_i)^2 \quad (6)$$

through constrained nonlinear optimization using an interior-point method in Matlab implemented as “fmincon”. A user may
90 choose to use an alternative smoothing algorithm to replace LOESS, or use an alternative S-shaped function to replace the sigmoid function. Examples of smoothing algorithms are the Savitzky-Golay filter or a kernel smoothing algorithm. The sigmoid curve could potentially be replaced by a hyperbolic tangent function. The LOESS algorithm was selected here because it is

considered appropriate to fit primary dunes with irregular shapes in terms of heights and lengths and where deformation of bedforms is significant (Ganti et al., 2013). Also, no information is lost at the start and at the end of a spatial series. Practical
95 considerations in selection of an algorithms could be computational time and whether data points are equidistant or not.

The bed elevation data series is decomposed based on both the LOESS curve and fitting of the steep primary lee sides with a sigmoid function fit. Data input are (curvilinear) grids. The methodology is applied per bed elevation profile (BEP). The subsequent steps are:

1. An initial LOESS curve is fitted to the BEP (Figure 1a).
- 100 2. Based on the initial LOESS curve, crest and trough locations of primary dunes are identified. If the maximum lee side slope in the LOESS curve is larger than a specified value (default: 0.03 m m^{-1} , which is approximately 1.7°), a break is set at the corresponding trough. If there are no breaks in a BEP, the initial LOESS curve is retained (Figure 1a).
3. If there are breaks in a BEP, the exact locations of these breaks are updated in the following steps. First, the local minimum of the bed elevation data is found, within a specified window upstream of the previous breakpoint. Subsequently,
105 the breakpoint location is updated if the slope to an upstream location within the window is lower than the cutoff slope (Figure 1b).
4. A LOESS curve is fitted up to the first break. Then, at the primary lee side upstream of the break, the sigmoid function is fitted, with initial values $b_1 = z_{break}$ and $b_4 = x_{break}$. Only the central section of the sigmoid function is retained for the eventual decomposition: the values with a slope smaller than 0.5 times the maximum slope or smaller than the cutoff
110 value (default 0.03 m m^{-1}) are removed. Also, if part of the fit is lower than the local minimum near the trough, this part is removed (Figure 1c).
5. A short LOESS curve is fitted to the data between the previous LOESS curve and the sigmoid function fit. The fit is forced to connect to LOESS curve and sigmoid fit by artificially adding data points (Figure 1c).
6. Steps 4 and 5 are repeated (Figure 1d).

115 2.2 Bedform identification and characterization

The identification of both primary and secondary bedforms is based on the decomposed bed elevation signals. The characterization of bedforms includes the following properties: height, length, depth, trough and crest locations, lee side slope, maximum lee side slope, stoss side slope, and the aspect ratio.

Secondary bedform identification is based on zero-crossing applied to the decomposed bed elevation signal ($z - z_{loess}$),
120 following Van der Mark and Blom (2007). A zero-crossing is marked as a downcrossing if the slope is negative, and as upcrossing if the slope is positive. The crests and troughs are determined as local maxima and minima between up- and down-crossings. For the secondary bedforms, we apply one iteration in the bedform identification, in order to eliminate very small fluctuations around the zero-line. Secondary bedform properties are determined both for the unfiltered bathymetric data (based

on previously identified crest and trough locations) and for the decomposed bathymetric data. The bedform height is defined as
125 $z_{crest} - (z_{trough-upstream} + z_{trough-downstream})/2$. The length is defined as the horizontal distance along the (curvilinear)
grid between the up- and downstream trough. The depth per bedform is computed as the average bed level (based on unfiltered
bathymetric data) between the up- and downstream trough. The lee slope is defined as the average slope between the crest and
downstream trough. The maximum lee slope is the maximum slope of a grid cell between the crest and downstream trough.
The stoss slope is characterized as the average slope between the crest and upstream trough. The aspect ratio is the height
130 divided by length.

The identification and characterization of primary bedforms is similar to that of secondary bedforms. Zero-crossing is based
on the decomposed signal, excluding secondary bedforms, and a base level. The latter can be computed as a moving average (4
to 5 times the dune length), a smoothed LOESS curve or a time-average of the local river bed, depending on data availability.
Here, we compute the base level as a moving average. Primary dunes are identified, iterating once. If a primary dune height is
135 smaller than 0.25 m, corresponding up- and downcrossings are removed and new minima and maxima are found. Properties are
subsequently determined similar to secondary bedforms. The maximum lee slope is defined as the maximum slope of a grid
cell between the crest and the downstream trough. If the primary lee side is fitted using the sigmoid function, the maximum
slope is determined based on values corresponding to the fitted function only.

After bedform identification and characterization, the secondary and primary bedforms are filtered to exclude bedforms that
140 are deemed unrealistic, such as small fluctuations around the zero-line. Secondary bedforms are filtered out if one or more of
the following conditions hold, which are all user-defined and site-specific:

- height is smaller than 0.05 m or larger than 0.75 m
- length is larger than 25 m or smaller than 0.5 m (5 times the resolution for data presented herein)
- the aspect ratio is larger than 0.2 or smaller than 0.005
- 145 – the crest elevation in the unfiltered data is less than 0.01 m lower than the up- or downstream trough
- the maximum lee side slope is smaller than 0.03 m m^{-1} .

Primary bedforms are filtered out if:

- height is smaller than 0.25 m or larger than 4 m
- length is larger than 200 m or smaller than 25 m
- 150 – aspect ratio is larger than 0.2 or smaller than 0.005
- the maximum lee side slope is smaller than 0.03 m m^{-1} .

All default values in the procedure above can readily be adjusted in the code.

2.3 Data description

The tool is applied to two data sets. Multibeam echosounding (MBES) data were provided by the Dutch Ministry of Infras-
155 tructure and Environment (Rijkswaterstaat) for the River Waal, which is the main branch of the River Rhine. The used data
set consists of one kilometer of the river, from approximately 425370 N, 154178 E to 426252 N, 154618 E (EPSG:28992). The
first data set was acquired on 25 August 2017, when the discharge in the Rhine at Tiel, a nearby station, was $1204 \text{ m}^3\text{s}^{-1}$. The
second data set was acquired on 23 January 2018, when the discharge was $3647 \text{ m}^3\text{s}^{-1}$. The data were provided as point clouds
and were interpolated through inverse distance weighting on a curvilinear grid with an approximate longitudinal horizontal res-
160 olution of 0.1 m, an approximate lateral resolution of 1 m and a vertical resolution of 0.01 m. BEPs analyzed here include every
longitudinal grid line between -81 m and 82 m with respect to the river's central axis, which is the region unaffected by scours
induced by river groynes.

3 Results

The two data sets were decomposed with the following parameters: [$d_x = 14$, window = 12, cutoff slope = 0.032] for the data set
165 acquired on 25 August 2017 and parameters [$d_x = 21$, window = 16, cutoff slope = 0.03] for the data set acquired on 23 January
2018. The bathymetric maps, primary bed elevation series and the signal corresponding to secondary bedforms are shown in
Figure 2. The campaign in August followed an extended period of low discharge. Secondary bedforms were relatively small
and only partly cover the primary dunes. The campaign in January 2018 took place during the rising limb just before a peak
discharge, which succeeded several similar peaks in the previous months. During high discharges, primary dunes are shorter,
170 and large secondary bedforms cover a large part of bed. In the southern river section secondary bedforms are dominant whereas
primary dunes nearly disappear. In the two cases presented here, secondary bedforms are not part of a decaying process,
where they cannibalize larger primary dunes (Bradley and Venditti, 2021). Two scales coexist during low flow and a rising
hydrographic limb, similar to what has been observed in the Waal river by Zomer et al. (2021).

Following the decomposition of the bed elevation data, bedforms have been identified based on zero-crossing. For primary
175 bedforms, the base level consists of a moving average of 400 m. Four BEPs are shown in Figure 3, which shows for each BEP
the measured bed elevation, the fitted line, and the locations of the crests and troughs of secondary and primary bedforms.
Figure 4 shows the distributions of height, length and the maximum lee side slope that are found for primary and secondary
bedforms based on the unfiltered bathymetric data.

In the applied decomposition procedure, breaks were implemented to avoid smoothing of steep primary lee side slopes. To
180 investigate the effectiveness of the procedure, histograms of the slopes of downstream facing cells with a value larger than
 0.03 m m^{-1} are shown in Figure 5. The first column shows the distribution of lee side slopes of the original bed elevation data.
The second column shows the same for the primary morphology after decomposition without breaks. Here, LOESS curves are
fitted with the parameters as reported in the Results section. The third column shows the results for the primary morphology
using the sigmoid function fit to the slopes. The figure indicates that introducing a break in the BEP and a separate treatment
185 of the lee side slopes increases the tail of the distribution towards the higher slopes.

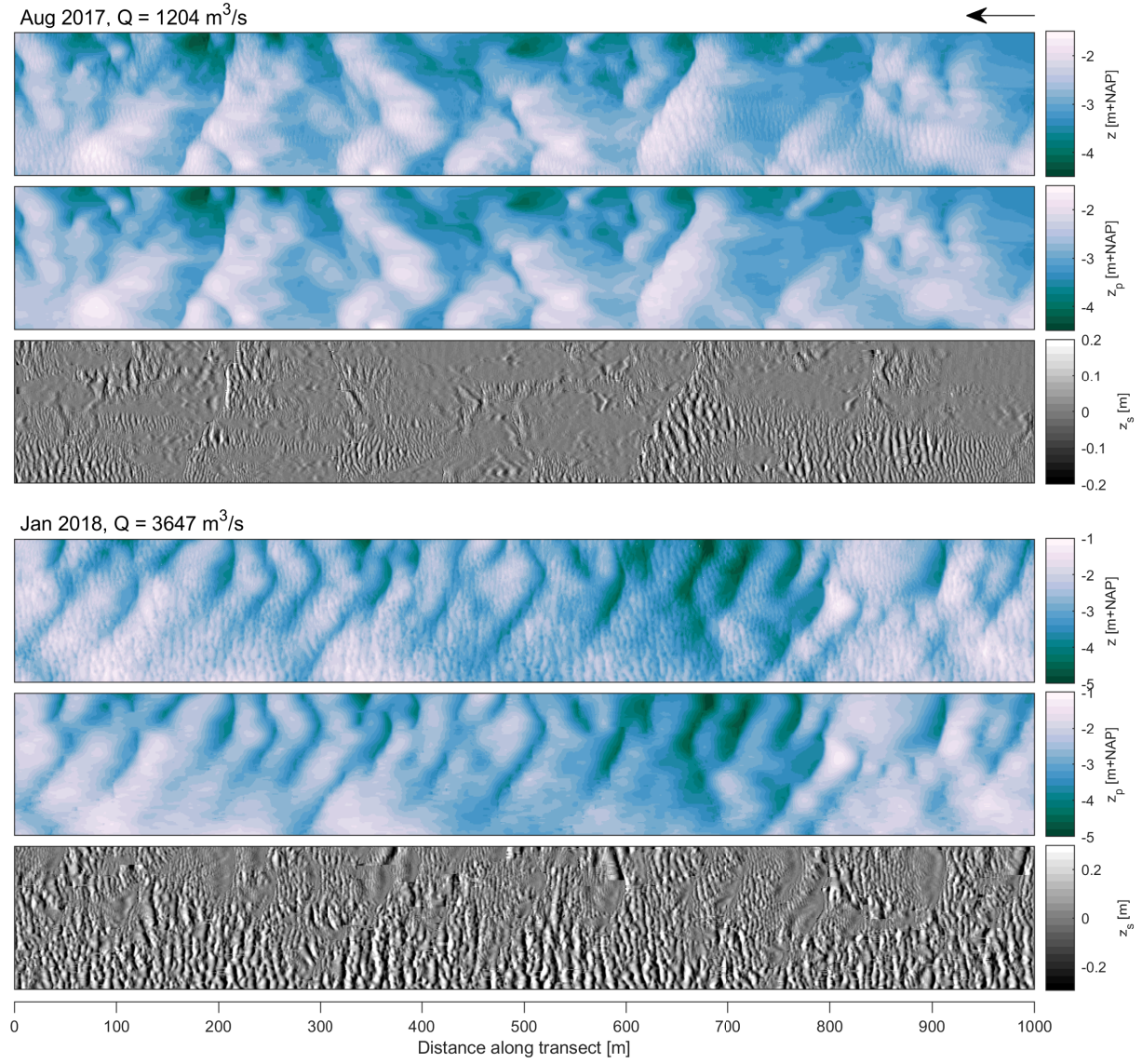


Figure 2. The bathymetric maps before and after decomposition. The first and fourth panel show the initial bathymetry. The second and fifth panel show the primary morphology. The third and sixth panel show the secondary bedforms.

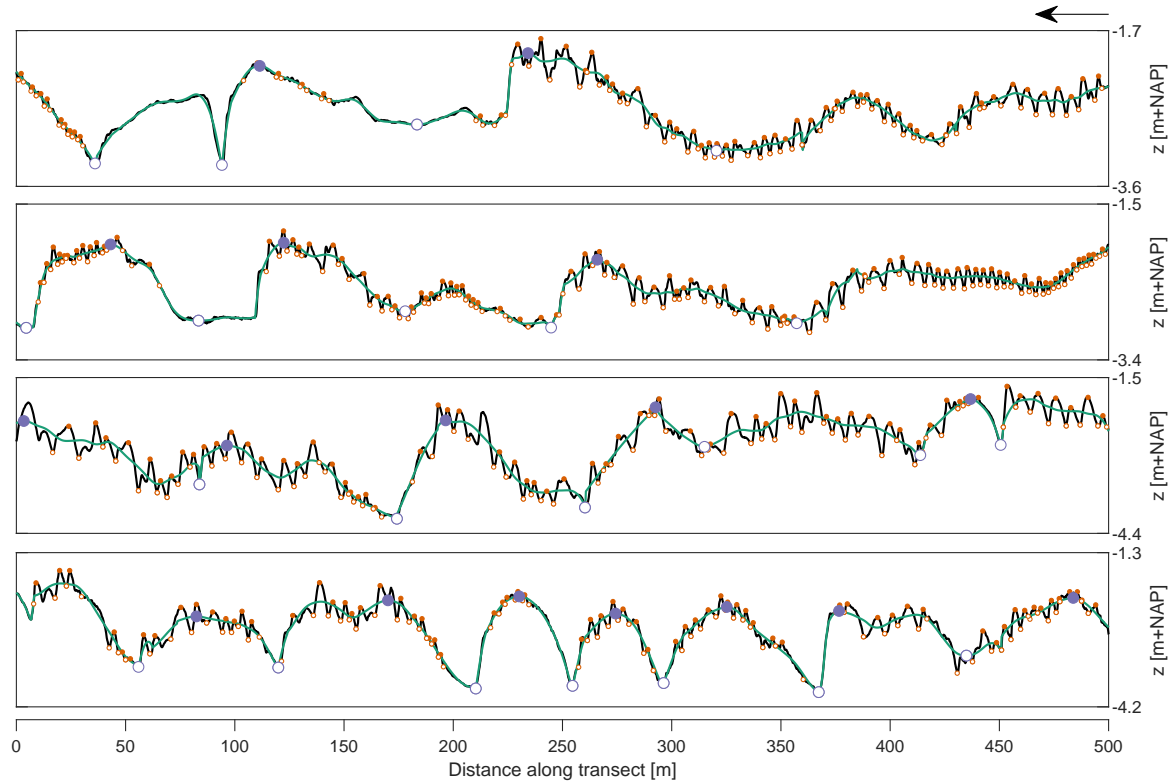


Figure 3. Four example BEPs. Each panel shows the bed elevation signal, the fitted line and the crests and troughs of the primary (large, purple circles) and secondary dunes (small, orange circles). The first and second panel are BEPs from the data set acquired in August 2017. The third and fourth panel are BEPs from the data set acquired in January 2018.

4 Discussion

The new tool presented herein serves two purposes: to isolate secondary bedforms from the underlying topography, and to identify bedform properties for both the primary and secondary bedforms based on zero-crossing. Figure 2 and 3 demonstrate that the tool decomposes the bathymetry well. The secondary bedforms are separated from the underlying bed topography and steep lee side slopes maintain their steepness. High-pass filtered data, shown in the third and sixth panels in Figure 2, indicate that the primary dune shape is not present in this signal, whereas in the second and fifth panel, no indication of secondary bedforms is present, indicating they are filtered out effectively. Whereas previous methods employ smoothing functions that have a continuous first derivative, such an approach is unsuitable for bathymetries with relatively large secondary bedforms, because a high degree of smoothing fails to adequately represent dune lee side slopes. For this reason, breaks are implemented here, leading to a fitted line that is continuous, but does not have a continuous first derivative. Figure 5 shows that by implementing breaks, the steep primary lee side slopes are not smoothed during the decomposition. Accurate estimation of lee side slopes is of vital importance because lee side slopes determine the local flow and sediment dynamics over dunes, indicate whether flow

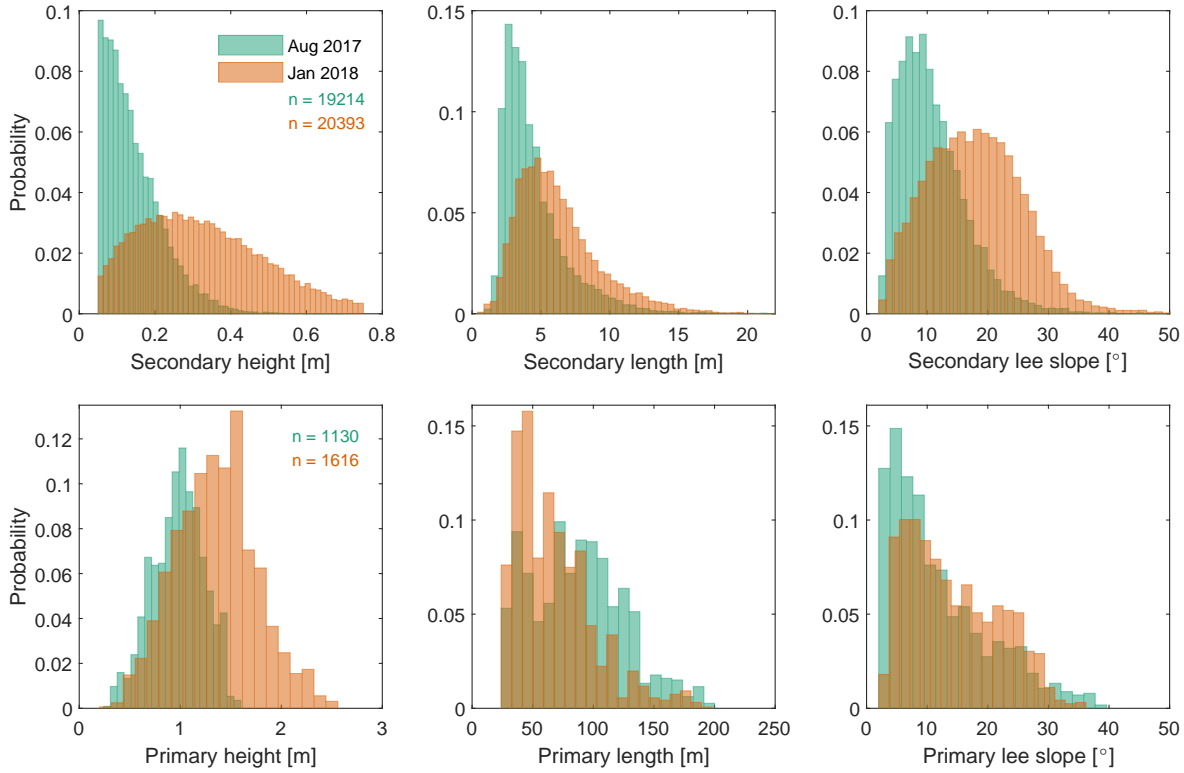


Figure 4. Histograms of the height, length and maximum lee side slope of secondary and primary dunes.

separation occurs, and determine hydraulic roughness (Kwoll et al., 2016, 2017; Lefebvre and Winter, 2016; Bradley et al., 2013).

200 Figure 3 shows the bedform identification based on zero-crossing, indicating that most secondary bedforms are identified. However, Figure 4 reveals that especially during low discharge, secondary bedforms can be so small that it is difficult to clearly distinguish them from random data inaccuracies, leading to a one-sided histogram with lower values missing.

In the application of this method, a user should be careful in choosing parameters with which the tool is applied. The quality of the decomposition and with that, bedform identification and characterization, depends to some extent on the initial parameters d_x , the window length and on the cutoff slope. These parameters provide strong control to the user, and the parameter settings may require tuning. Though zero-crossing is a well recognized method to identify bedforms (Van der Mark and Blom, 2007), a limitation is that, especially for raw data, random fluctuations around the zero-line can be included as bedforms, leading to a need for filtering.

For both primary and secondary dunes, a mean lee side angle and a maximum lee side angle are calculated. Usually, the lee side slope is not straight, which is relevant for lee side processes such as flow separation. For high-angle dunes, the steepest section of the lee slope is also referred to as the slip face angle, which exerts a control over sediment avalanching (Lefebvre

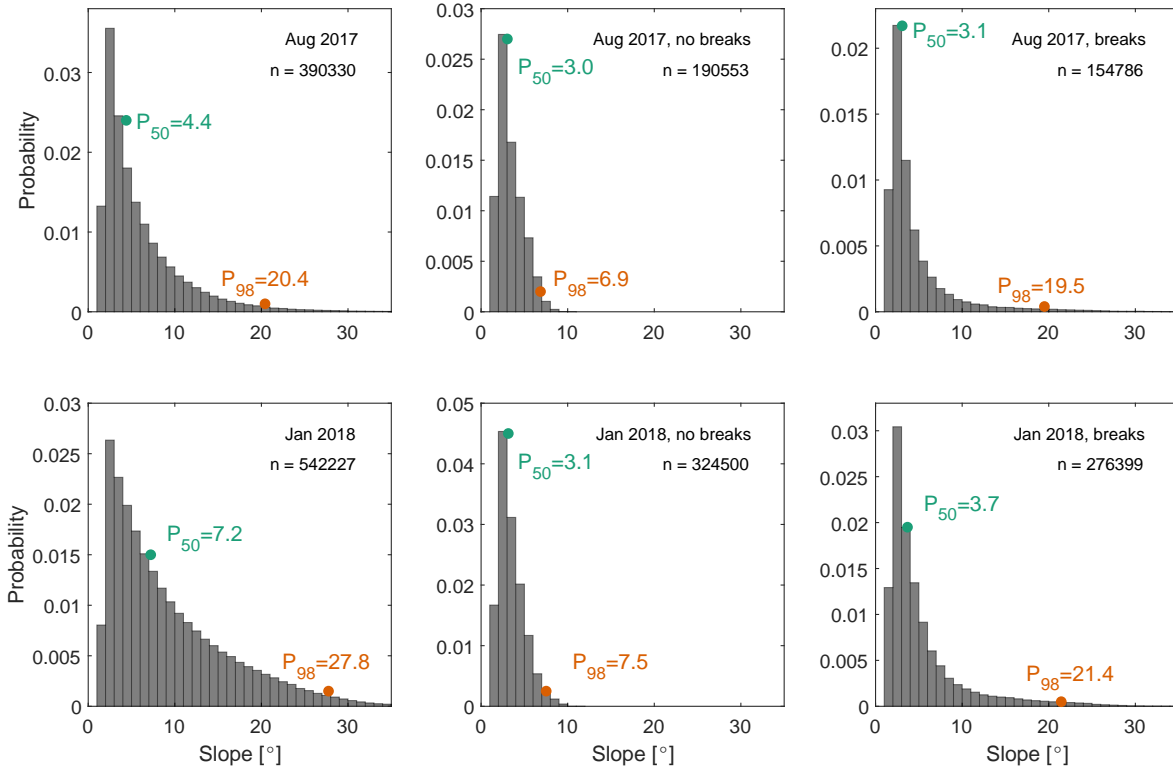


Figure 5. Histograms of slope of downstream facing cells with values larger than 0.03 m m^{-1} . The first column shows the results for the original data, the second column shows the results for the decomposed, primary morphology if no breaks are implemented and the third column shows the results for the decomposition with the new tool, including breaks. The 50th (P₅₀) and 98th percentile (P₉₈) are displayed for each histogram.

et al., 2016; Kostaschuk and Venditti, 2019). Up- and downstream of the slip face, the lee side slope is gentler. The maximum lee side slope is determined as the maximum slope of a grid cell between the crest and the downstream trough, similar to the approach of Cisneros et al. (2020), whereas Lefebvre et al. (2016) and Van der Mark and Blom (2007) use a different approach.

215 Lefebvre et al. (2016) defines the slip face as the part of the bedform lee which has an angle larger than 5 degrees and Van der Mark and Blom (2007) exclude 1/6th of the lee side slope both towards the crest and towards the trough and defines the slip face based on the slope of the remaining section. The advantage of computing the maximum lee side slope of a single cell is that it is independent of the particular shape of the lee side and it avoids underestimation of the slip face. For primary dunes, the maximum slope is determined based on the decomposed signal. So for high-angle dunes, it is based on the sigmoid function fit.

220 For secondary bedforms, the maximum slope is based on the unfiltered signal. It is important that this signal does not contain irregularities due to measurement uncertainty, because under those circumstances, the slope of a single cell does not accurately

reflect the slope of the bedform. If this is the case, the signal should be smoothed to exclude such irregularities or otherwise, the maximum lee slope should be based on a larger number of adjacent cells.

225 The tool presented here is appropriate for data sets with multiple scales of bedforms, as long as these scales are sufficiently separated, and the longitudinal resolution of the data is high enough, relative to the length of the smallest bedform scale. In this study, the smallest bedform lengths are five times the longitudinal data resolution of 0.1 m. The tool is appropriate for primary dunes with steep lee side slopes. In this study, the tool is applied to a data set with subaqueous bedforms under unidirectional flow. We expect the tool can be applied to data sets from different environments, if above mentioned requirements hold and primary dune lee sides are similarly shaped. In tidal environments, primary dunes can have both an ebb and flood steep face
230 (Lefebvre et al., 2022), for such a case we do not expect the tool to be appropriate as is, since only steep lee side slopes are approximated with the sigmoid function. When three or more bedform scales are present, part of the procedure can be repeated. After separating the smallest scale bedform from the remainder, the latter signal can be subjected to the same procedure.

5 Conclusion

A tool is presented to decompose bed elevation data representing multiple scales for the identification and characterisation of
235 larger primary and smaller secondary, superimposed bedforms. A LOESS algorithm was used to isolate the secondary dunes from primary dunes in between breaks downstream of steep primary lee side angles. The steep lee side slopes of primary dunes are approximated with a sigmoid function, replacing the LOESS fit at the slope. The decomposed data series are used to identify both secondary and primary dunes through zero-crossing and to measure dune properties based on filtered and unfiltered bed elevation profiles. The results show that the tool is successful in separating scales for data sets with well-defined
240 bedform scales.

Code and data availability. The matlab code used in this study can be accessed through https://github.com/j-zomer/BedformSeparation_Identification. The data used to make Figure 4, which includes properties of primary and secondary dunes, can be retrieved through <https://doi.org/10.4121/19620093>.

Author contributions. Initiation and design of the study was a result of discussion between all co-authors. Judith Zomer developed the tool,
245 about which the co-authors were regularly consulted. Judith Zomer analyzed the data and wrote the manuscript. The manuscript was reviewed and edited by all co-authors.

Competing interests. There are no competing interests.

Acknowledgements. This study is part of the research program Rivers2Morrow, which is funded by the Dutch Ministry of Infrastructure and Water Management and its executive organization Rijkswaterstaat. We thank Rijkswaterstaat-CIV for providing the data used in this study.

250 A.J.F. Hoitink and S. Naqshband were partially funded by the Netherlands Organization for Scientific Research (NWO), within Vici project “Deltas out of shape: regime changes of sediment dynamics in tide-influenced deltas” (Grant NWO-TTW 17062). We thank Ray Kostaschuk and one anonymous reviewer for their helpful comments and suggestions.

References

- Abraham, D., Kuhnle, R. A., and Odgaard, A. J.: Validation of bed-load transport measurements with time-sequenced bathymetric data, *Journal of Hydraulic Engineering*, 137, 723–728, 2011.
- Ashley, G. M.: Classification of large-scale subaqueous bedforms; a new look at an old problem, *Journal of Sedimentary Research*, 60, 160–172, 1990.
- Best, J. and Kostaschuk, R.: An experimental study of turbulent flow over a low-angle dune, *Journal of Geophysical Research: Oceans*, 107, 18–1, 2002.
- Bradley, R., Venditti, J., Kostaschuk, R., Church, M., Hendershot, M., and Allison, M. A.: Flow and sediment suspension events over low-angle dunes: Fraser Estuary, Canada, *Journal of Geophysical Research: Earth Surface*, 118, 1693–1709, 2013.
- Bradley, R. W. and Venditti, J. G.: Reevaluating dune scaling relations, *Earth-science reviews*, 165, 356–376, 2017.
- Bradley, R. W. and Venditti, J. G.: Mechanisms of dune growth and decay in rivers, *Geophysical Research Letters*, 48, e2021GL094572, 2021.
- Carling, P., Golz, E., Orr, H., and Radecki-Pawlik, A.: The morphodynamics of fluvial sand dunes in the River Rhine, near Mainz, Germany. I. Sedimentology and morphology, *Sedimentology*, 47, 227–252, 2000.
- Cazenave, P. W., Dix, J. K., Lambkin, D. O., and McNeill, L. C.: A method for semi-automated objective quantification of linear bedforms from multi-scale digital elevation models, *Earth Surface Processes and Landforms*, 38, 221–236, 2013.
- Cellino, M. and Graf, W.: Experiments on suspension flow in open channels with bed forms, *Journal of Hydraulic Research*, 38, 289–298, 2000.
- Chen, J., Wang, Z., Li, M., Wei, T., and Chen, Z.: Bedform characteristics during falling flood stage and morphodynamic interpretation of the middle–lower Changjiang (Yangtze) River channel, China, *Geomorphology*, 147, 18–26, 2012.
- Cisneros, J., Best, J., Van Dijk, T., de Almeida, R. P., Amsler, M., Boldt, J., Freitas, B., Galeazzi, C., Huizinga, R., Ianniruberto, M., et al.: Dunes in the world’s big rivers are characterized by low-angle lee-side slopes and a complex shape, *Nature Geoscience*, 13, 156–162, 2020.
- Galeazzi, C. P., Almeida, R. P., Mazoca, C. E., Best, J. L., Freitas, B. T., Ianniruberto, M., Cisneros, J., and Tamura, L. N.: The significance of superimposed dunes in the Amazon River: implications for how large rivers are identified in the rock record, *Sedimentology*, 65, 2388–2403, 2018.
- Ganti, V., Paola, C., and Fofoula-Georgiou, E.: Kinematic controls on the geometry of the preserved cross sets, *Journal of Geophysical Research: Earth Surface*, 118, 1296–1307, 2013.
- Greenslade, D. J., Chelton, D. B., and Schlax, M. G.: The midlatitude resolution capability of sea level fields constructed from single and multiple satellite altimeter datasets, *Journal of atmospheric and oceanic technology*, 14, 849–870, 1997.
- Gutierrez, R. R., Abad, J. D., Parsons, D. R., and Best, J. L.: Discrimination of bed form scales using robust spline filters and wavelet transforms: Methods and application to synthetic signals and bed forms of the Río Paraná, Argentina, *Journal of Geophysical Research: Earth Surface*, 118, 1400–1418, 2013.
- Harbor, D. J.: Dynamics of bedforms in the lower Mississippi River, *Journal of Sedimentary Research*, 68, 750–762, 1998.
- Kostaschuk, R. A. and Venditti, J. G.: Why do large, deep rivers have low-angle dune beds?, *Geology*, 47, 919–922, 2019.
- Kwoll, E., Venditti, J., Bradley, R., and Winter, C.: Flow structure and resistance over subaqueous high-and low-angle dunes, *Journal of Geophysical Research: Earth Surface*, 121, 545–564, 2016.

- 290 Kwohl, E., Venditti, J., Bradley, R., and Winter, C.: Observations of coherent flow structures over subaqueous high-and low-angle dunes, *Journal of Geophysical Research: Earth Surface*, 122, 2244–2268, 2017.
- Lee, J., Musa, M., and Guala, M.: Scale-dependent bedform migration and deformation in the physical and spectral domains, *Journal of Geophysical Research: Earth Surface*, 126, e2020JF005 811, 2021.
- Lefebvre, A. and Winter, C.: Predicting bed form roughness: the influence of lee side angle, *Geo-Marine Letters*, 36, 121–133, 2016.
- 295 Lefebvre, A., Paarlberg, A. J., and Winter, C.: Characterising natural bedform morphology and its influence on flow, *Geo-marine letters*, 36, 379–393, 2016.
- Lefebvre, A., Herrling, G., Becker, M., Zorndt, A., Krämer, K., and Winter, C.: Morphology of estuarine bedforms, Weser Estuary, Germany, *Earth Surface Processes and Landforms*, pp. 1–15, 2021.
- Lefebvre, A., Herrling, G., Becker, M., Zorndt, A., Krämer, K., and Winter, C.: Morphology of estuarine bedforms, Weser Estuary, Germany, *Earth Surface Processes and Landforms*, 47, 242–256, 2022.
- 300 Maddux, T., McLean, S., and Nelson, J.: Turbulent flow over three-dimensional dunes: 2. Fluid and bed stresses, *Journal of Geophysical Research: Earth Surface*, 108, 2003a.
- Maddux, T., Nelson, J., and McLean, S.: Turbulent flow over three-dimensional dunes: 1. Free surface and flow response, *Journal of Geophysical Research: Earth Surface*, 108, 2003b.
- 305 McElroy, B. and Mohrig, D.: Nature of deformation of sandy bed forms, *Journal of Geophysical Research: Earth Surface*, 114, 2009.
- McLean, S., Wolfe, S., and Nelson, J.: Predicting boundary shear stress and sediment transport over bed forms, *Journal of Hydraulic Engineering*, 125, 725–736, 1999.
- Naqshband, S. and Houtink, A.: Scale-dependent evanescence of river dunes during discharge extremes, *Geophysical Research Letters*, 47, e2019GL085 902, 2020.
- 310 Nelson, J. M., McLean, S. R., and Wolfe, S. R.: Mean flow and turbulence fields over two-dimensional bed forms, *Water Resources Research*, 29, 3935–3953, 1993.
- Nelson, J. M., Shreve, R. L., McLean, S. R., and Drake, T. G.: Role of near-bed turbulence structure in bed load transport and bed form mechanics, *Water resources research*, 31, 2071–2086, 1995.
- Parsons, D. R., Best, J. L., Orfeo, O., Hardy, R. J., Kostaschuk, R., and Lane, S. N.: Morphology and flow fields of three-dimensional dunes, Rio Paraná, Argentina: Results from simultaneous multibeam echo sounding and acoustic Doppler current profiling, *Journal of Geophysical Research: Earth Surface*, 110, 2005.
- 315 Reesink, A. and Bridge, J.: Influence of superimposed bedforms and flow unsteadiness on formation of cross strata in dunes and unit bars, *Sedimentary Geology*, 202, 281–296, 2007.
- Reesink, A., Parsons, D., Ashworth, P., Best, J., Hardy, R., Murphy, B., McLelland, S., and Unsworth, C.: The adaptation of dunes to changes in river flow, *Earth-Science Reviews*, 185, 1065–1087, 2018.
- 320 Scheiber, L., Lojek, O., Götschenberg, A., Visscher, J., and Schlurmann, T.: Robust methods for the decomposition and interpretation of compound dunes applied to a complex hydromorphological setting, *Earth Surface Processes and Landforms*, 46, 478–489, 2021.
- Schlaß, M. G. and Chelton, D. B.: Frequency domain diagnostics for linear smoothers, *Journal of the American Statistical Association*, 87, 1070–1081, 1992.
- 325 Simons, D. B., Richardson, E. V., and Nordin, C. F.: Bedload equation for ripples and dunes, vol. 462, US Government Printing Office, 1965.
- Van der Mark, C. and Blom, A.: A new and widely applicable tool for determining the geometric properties of bedforms, *Civil Eng. & Man. Res. Reports 2007R-003/WEM-002*, 2007.

- van Dijk, T. A., Lindenberg, R. C., and Egberts, P. J.: Separating bathymetric data representing multiscale rhythmic bed forms: A geostatistical and spectral method compared, *Journal of Geophysical Research: Earth Surface*, 113, 2008.
- 330 Venditti, J. G., Church, M., and Bennett, S. J.: Morphodynamics of small-scale superimposed sand waves over migrating dune bed forms, *Water resources research*, 41, 2005.
- Venditti, J. G., Lin, C.-Y. M., and Kazemi, M.: Variability in bedform morphology and kinematics with transport stage, *Sedimentology*, 63, 1017–1040, 2016.
- 335 Wang, L., Yu, Q., Zhang, Y., Flemming, B. W., Wang, Y., and Gao, S.: An automated procedure to calculate the morphological parameters of superimposed rhythmic bedforms, *Earth Surface Processes and Landforms*, 45, 3496–3509, 2020.
- Wilbers, A. and Ten Brinke, W.: The response of subaqueous dunes to floods in sand and gravel bed reaches of the Dutch Rhine, *Sedimentology*, 50, 1013–1034, 2003.
- Zomer, J., Naqshband, S., Vermeulen, B., and Hoitink, A.: Rapidly migrating secondary bedforms can persist on the lee of slowly migrating primary river dunes, *Journal of Geophysical Research: Earth Surface*, 126, e2020JF005 918, 2021.