

# Geophysical evidence of massive hyperconcentrated Bonaduz push waves with embedded tFoma hills exerted by the Flims rockslide

Sibylle Knapp<sup>1</sup>, Michael Schwenk<sup>2</sup>, Michael Krautblatter<sup>1</sup>

<sup>1</sup>Landslides Research Group, Technical University of Munich, Munich, Germany

5 <sup>2</sup>Institute of Geological Sciences, University of Bern, Bern, Switzerland

*Correspondence to:* Sibylle Knapp (sibylle.knapp@tum.de)

**Abstract.** Rockslides and rock avalanches are amongst the most destructive natural hazards in the alpine environment. The Flims rockslide is the largest known rock-slope failure in the Alps, which provides excellent outcrops and has fascinated researchers since the early 20th century. The postulated impact of the Flims rockslide on Lake Bonaduz caused intensely fluidized rock material, which formed the Bonaduz Formation and tFoma hills, probably accompanied by a catastrophic impact wave. So far, this hypothesized sequence of events is based only on sedimentological and geomorphic analyses. We present electrical resistivity tomography (ERT) profiles, which we correlated with the sedimentological information obtained from outcrops and drill logs. Here, geophysical evidence on a meter and decameter scale complements prior outcrop and sample intervals with much smaller representativeness. Our study provides new insights into the distribution, thickness, and internal structure of the Bonaduz Formation, and the tFoma hills, as well as other flood deposits around the Ils Aults where we studied the sediment to a depth of up to 160 m. There is geophysical evidence that the Bonaduz Formation formed an onlap onto the Ils Aults and is thus the stratigraphically younger unit. The tFoma hills consist of blocky cores with an agglomeration of smaller mixed sediments, which drift and override the tFoma core, causing their smoothly shaped top. We consider simultaneous transport of the Toma-hills within the Bonaduz Formation, yet a slightly slower movement at the front due to a bulldozing effect. This study contributes to an improved understanding of i) the complex stratigraphical context of the Tamins and Flims deposits, ii) water-rich entrainment in rock avalanches, and iii) the genesis and transport of tFoma hills.

## 1 Introduction

The Flims rockslide deposit is located in the Vorderrhein River valley, Eastern Switzerland. With its deposits comprising a volume of 10-12 km<sup>3</sup> and covering an area of ~52 km<sup>2</sup> (Heim, 1932; Abele, 1974; Poschinger, 2006), the Flims rockslide is the largest known catastrophic Alpine rock-slope failure. Along a major thrust fault, the U-shaped W-E directed Rhine valley tectonically separates the Triassic to Cretaceous sedimentary rocks of the Helvetic nappes to the north from metasedimentary rocks of the Penninic nappes to the south (Pfiffner et al., 2002). The Flims rockslide detached from the northern valley flank and mainly comprises Jurassic limestone from the Quinten-Kalk formation. The rockslide partially transformed into a rock avalanche during its descent, which increased its runout distance (Pollet and Schneider, 2004; Schneider et al., 2004; Aaron et

30 al., 2020). In the following, we simply refer to the Flims rock-slope failure as a rockslide. The deposits had originally been thought to be of a lateglacial age. Based on radiocarbon and cosmogenic nuclide dating, however, the Flims rockslide was dated to a mean age of ~9000 yrs cal BP (Poschinger and Haas, 1997; Schneider et al., 2004; Deplazes et al., 2007; Ivy-Ochs et al., 2009).

The stratigraphical relationship to the neighbouring Tamins rockslide (Fig. 1), however, is still a matter of debate. The local stratigraphy and morphology provide evidence that the Tamins rockslide had dammed a paleolake, Lake Bonaduz, which the Flims rockslide presumably impacted (Poschinger et al., 2006; Poschinger and Kippel, 2009; Calhoun et al., 2015; Calhoun and Clague, 2018). Upon impact into Lake Bonaduz and into the sedimentary valley fill (Scheller, 1970; Calhoun and Clague, 2018), the Flims rockslide brought a volume of several 100 mio. m<sup>3</sup> of sediment into suspension, evoked by the immense energy input of push waves. The resulting hyperconcentrated mass flow (Calhoun and Clague, 2018) transported slabs of the impacting rock mass on top and was deposited as Bonaduz Formation (Wyss and Wiederkehr, 2017), a characteristic graded but unstratified sediment with rip-up clasts of silt- and sandstones and rock avalanche material (Fig. 2a-c) that forms a plain between the Flims and Tamins rockslide deposits (Fig. 1; Pavoni, 1968; Poschinger et al., 2006; Poschinger and Kippel, 2009; Poschinger and Rugg, 2012). Embedded in this plain, the rock slabs were deposited as **tFoma** (Fig. 1 and Fig. 2d-f), i.e. isolated cone- to pyramid- or roof-shaped hills composed of Helvetic bedrock material (Abele, 1974). Around the Ils Aults, there are three different terms for these hills. According to Arbenz and Staub (1910), the long hills situated in the Bonaduz plain are called 'Cresta', whereas the round or cone-shaped hills containing rockslide material are called 'Toma' around Ems, and 'Put' around Bonaduz (see Fig. 1 for locations). Piperoff (1897) and Arbenz and Staub (1910) interpreted the caps on top of the hills initially as moraine deposits, but only few outcrops were known. Henceforth, we refer to all these morphologically variable hills as '**tFoma**'.

50 In the European Alps, **tFoma** also occur at the rock avalanches at Fernpass (Prager et al., 2006), Almtal (Van Husen et al., 2007), Obernberg valley (Ostermann et al., 2012), Eibsee (Ostermann and Prager, 2016), and Lago di Braies (Ostermann et al., 2020). Deciphering the internal structure of the **tFoma** and of the Bonaduz Formation is assumed a key to understanding the complex emplacement of rock-avalanche material after water-rich entrainment (Poschinger et al., 2006).

The present study addresses the following aspects and brings them in a chronological order of 4 phases: (i) geological events related to the Flims and Tamins rockslides (Phase 1 and 2), (ii) the evolution of the above described characteristic landforms of the **tFoma hills** and the deposit of the Bonaduz Formation (Phase 3), and (iii) the formation of outburst-flood deposits after rockslide-dam failure (Phase 4). With geoelectrical measurements and data from outcrops as well as publicly available drill logs, we provide insights into the **tFoma** and Bonaduz Formation up to ~160 m depth, and give a more detailed view on the stratigraphic relationships around the Tamins and Flims rockslide deposits (Fig. 3).

## 60 2 Methods

Five ERT surveys were conducted in the area around the Tamins rockslide deposit (Fig. 1). We investigated the Bonaduz plain, its contact to the Ils Aults, and two Tuma hills – one to the West of Ils Aults (Bot Dagatg) and one to the East of Ils Aults (Tuma Padrusa). For the ERT measurements, an ABEM SAS 1000 Terrameter and four 100-m and four 200-m-long electric cables with an electrode spacing of 5 m and 10 m, respectively, were used. Roll alongs, the stepwise allocation of cables from the back to the front of a transect, allowed an increased penetration depth over an extended distance covered with one individual transect (e.g. Profile P1 in Fig. 4a with one roll along yielding 1000 m profile length). A combination of Wenner and Schlumberger arrays was chosen to determine both vertical and horizontal resistivity changes. The local topography along the profiles was measured with an inclinometer. The sub-surface resistivity was modeled with RES2Dinv (ver. 3.5) and the determined topography was included in the models. The results were then interpreted based on our field observations in outcrops of the Tuma and Bonaduz Formation close to the profiles. Furthermore, we correlated the ERT models with sedimentological data from drill logs (Kanton Graubünden, 2022). These logs provide basic sedimentological information and interpretations. We reevaluated these drilling results considering the findings in the ERT surveys and in the light of the most recent hypotheses about the Flims and Tamins rockslides. Eventually, we combined 11 drill logs and the four ERT profiles into a schematic cross-sectional overview of the local stratigraphy around the Tamins rockslide deposit (Fig. 5).

## 75 3 Results and Interpretation

Profile P1 (Fig. 4a) shows a NW-SE oriented transect modelled from two surveys. One survey was conducted in a 500 m five-cable roll along with 5 m electrode spacing, the second survey was conducted in an 800 m long four-cable survey with 10 m electrode spacing. The resistivity data of both transects were combined in order to provide a high spatial resolution in the upper 50-80 m below the surface and a high penetration depth of up to ~160 m. The overall error of the resulting model is 4.9 %. The similarity in the MinMax-models displays this small model variance well (Fig. S1). It should be noted that a gas pipeline crosses perpendicular to the transect at meter 430 and unknown depth. Two main resistivity units can be distinguished. First, in the resistivity model mixed sediments are detected down to 50–60 m penetration depth, indicated in yellow and light blue colour. The sediments of this resistivity unit are well accessible in the gravel pit of Reichenau (Fig. 1). A matrix-supported gravel unit with sandy to silty matrix is exposed in the pit. Overall, the unit is normally graded and unstratified, and partially covered by sand and silt beds (Fig. 2b,c). The Reichenau pit represents the type locality of the Bonaduz Formation and here the unit is ~60 m thick. We interpret these mixed sediments in the acquired model as the Bonaduz Formation, as the obtained resistivity and depth correlate well with the outcrop. In the middle of the transect, a crossing gas pipeline causes a model artefact. The resistivity patterns to both sides of the artefact appear to match and exemplify the geometry of a wedge. As such, this location is interpreted as the onlap of the Bonaduz Formation onto the rise of the Ils Aults that is visible at meter 400-450. The Ils Aults is regarded as part of the Tamins rockslide deposit (e.g. Calhoun and Clague, 2018) and is formed by coarse to blocky rock material, which causes the high resistivity values in the second unit, marked with red colour. A finer grained

sediment cover on top of the IIs Aults is indicated by mid-range resistivity values in yellow colour.

Bot Dagatg was investigated in two transects. Profile P2 (Fig. 4b) was obtained from a W-E oriented transect across Bot Dagatg, which is the rise between meter 740 and 840 with an elevation of 690 m a.s.l. The survey reaches a maximum penetration depth of ~160 m on a transect length of 1000 m. The overall error of the resistivity model is 4.9 % (MinMax models in Fig. S1). At meters 390 and 740, power supply lines cross perpendicular to the transect and cause artefacts. Profile P3 (Fig. 4c) was obtained from a N-S oriented transect and shows a cross-cut section to Profile P2. This transect is 400 m long with a maximum penetration depth of ~60 m. The overall error of the resistivity model is 5.9 % and shows the highest uncertainties at locations with rapid changes in resistivity (Fig. S1). In both models, the transition from low resistivity values (blue) to high values (red) occurs within a narrow zone. This quick transition in resistivity indicates a distinct change in material composition. We interpret these transition zones to indicate a sharp contact between the blocky core material of the ~~tomaFoma~~ ~~hill~~, and the surrounding Bonaduz Formation as well as other sedimentary valley fill. In profile P2, the Bonaduz Formation visibly laps onto the rise of Bot Dagatg from meter 240 to 320. We therefore suggest that the ~~Foma~~-hill was transported within the finer-grained hyperconcentrated flow, as proposed by Calhoun and Clague (2018), and slightly overrun by the surrounding slurry after its halt, forming an onlap.

Profile P4 (Fig. 4d) was obtained in a 300 m-long W-E oriented survey that crossed Tuma Padrusa. This survey reaches a maximum penetration depth of 60 m. The overall model error is 2.8 %. In the center of the ~~tomaFoma~~, coarse, blocky material is indicated by high resistivity values. The ~~hillFoma~~ is covered by a thin layer of mixed sediment, which seems to have overrun the coarse, coherent material in the center, similar to Bot Dagatg. The onlapping and overrunning material probably decelerated during the uphill movement and was partially deposited “on the ramp”. We interpret the narrow transition zone from high to low resistivity values at ~30-40 m penetration depth as the base of the ~~Foma~~ above preexisting sedimentary valley fill.

## 4 Discussion

The ERT surveys conducted in the present study elucidate the formation and the stratigraphic relation of the Bonaduz Formation and the ~~Foma-hills~~.

### 115 4.1 Characteristics of the Bonaduz Formation and implications for the Tamins-Flims-Timeline

Based on the information obtained from the ERT survey displayed in Profile P1 (Fig. 4a), the Bonaduz Formation has a mean thickness of ~ 50-70 m at its type locality around Bonaduz. This measurement correlates well with the earlier sedimentological and geomorphological analyses by Calhoun et al. (2015) yielding up to 75 m, and Calhoun and Clague (2018) stating a thickness of 65 m.

120 The ERT profile P1 (Fig. 4a) further show onlaps of the Bonaduz Formation onto the IIs Aults deposits. In the stratigraphical context, this onlap implies that the IIs Aults, considered as Tamins deposit, must have been formed before the Bonaduz Formation and further corroborate the hypotheses (Scheller, 1970; Abele, 1991; Poschinger et al., 2006) that (i) the Tamins

rockslide occurred before the Flims rockslide, (ii) the Tamins deposits formed a dam and probably created Lake Bonaduz, and (iii) the Flims rockslide impacted Lake Bonaduz, thereby triggering a hyperconcentrated mass flow with gravel in suspension (Calhoun and Clague, 2018), known as Bonaduz Formation. Similar results of mobilized substratum and water-rich entrainment after a rockslide impacting a lake are shown by Knapp et al. (2021) at the Eibsee rock avalanche.

#### 4.2 Characteristics of the ~~t~~Foma

The two investigated ~~Toma~~-hills Bot Dagatg and Tuma Padrusa, situated to the West and the East of Ils Aults, consist of limestone. Bot Dagatg is composed of Cretaceous limestone, Tuma Padrusa of Jurassic limestone (Quinten and Tros 130 limestone). In the ERT profiles, they show more or less the same granular composition. Based on the model results presented in Profiles P2–4 (Fig. 4b-d), we conclude that they most probably consist of large blocks of crushed and shattered rockslide material with capping gravels and fines. These observations are consistent with earlier results of, e.g., Arbenz and Staub (1910), Nabholz (1975) and Calhoun et al. (2015; outcrop picture of Tuma Padrusa in Fig. 155.4 therein).

However, the surrounding sediment of these two ~~Toma~~ hills and the contacts therewith are different. The ERT models P2 and P3 (Fig. 4b,c) show that Bot Dagatg is framed by Bonaduz Formation with an onlap on the southern flank. On the far side of 135 the Tamins deposit, Tuma Padrusa is framed by less blocky, but still coarse-grained material. The surrounding sediment also shows onlaps, but clearly has a different composition compared to the Bonaduz Formation on the western side of Ils Aults. Probably, Tuma Padrusa resides in remobilized rockslide material and admixed Bonaduz Formation, a mixture that was formed during the failure of the dam that the Tamins deposit once formed (Calhoun and Clague, 2018). Both studied hills overlie the 140 indiscernible and unaltered sedimentary valley fill at unknown depth (Fig. 5).

Furthermore, for Tuma Padrusa the ERT model indicates a mean thickness of ~30-40 m. Compared to an elevation difference of ~15m between the surrounding plain and the ~~t~~Foma surface in this section, the “root” of the ~~t~~Foma lies 2-3 times deeper.

#### 4.34 ~~Toma~~ transport and stratigraphy

Concerning the formation and stratigraphical position of the ~~t~~Foma-hills, our results affirm the hypothesis of a simultaneous 145 transport within a highly fluidized mass movement. As suggested by Poschinger and Kippel (2009) and Calhoun and Clague (2018), it is plausible that pieces of the Flims rockslide were transported by a hyperconcentrated flow (Bonaduz Formation), which itself was caused by the rockslide. Our investigation showed that Bot Dagatg is mainly composed of an isolated rock slab that is embedded in and overlapped by the Bonaduz Formation, which supports this theory of their synchronous formation and deposition. Likewise, the blocky core of Tuma Padrusa was most probably transported within the sediment that it is 150 embedded in.

Similar observations of ~~t~~Foma transport within highly fluidized mass movements were reported from the Fernpass site (Prager et al., 2006) and analogue models (Paguican et al., 2014). Prager et al. (2006) interpreted the onlapping sediments as post-rockslide fluvial clasts. In the Flims context, we suggest a syn-depositional or late-depositional emplacement of the onlapping unit, clearly linked in time to the main event and the Bonaduz Formation. We postulate that the coarse centre of a ~~t~~Foma hill

155 comes to stop first due to strong internal cohesive forces and resulting high friction to the surrounding sediment, so that the finer grained slurry can overtop in flow direction, forming an onlap. It is possible that the ~~t~~Foma core is slightly moved and maybe rotated during the overflow of and interaction with the finer sediment (Dufresne and Geertsema, 2020). Still, it remains unclear, whether the top deposits revealed in the outcrops and the ERT models could also have been deposited during later outburst floods of Lake Ilanz (Schneider et al., 2004; Poschinger et al., 2006).

#### 160 4.4 Other ~~t~~Foma origin

Concerning the ~~t~~Foma around Domat/Ems on the far side of Ils Aults, Calhoun and Clague (2018) hypothesize that these are pieces of the Tamins rockslide deposit, which was torn apart during a catastrophic dam breakage. Our ERT results of Tuma Padrusa (Fig. 4d) substantiate the possibility that the rock slab was transported eastwards, indicated by the onlap and the overrunning sediment coming from West. Unfortunately, the internal structure and content of Tuma Padrusa do not allow for a clear separation between Flims origin and remobilized Tamins material. But it is interesting to note that we observe very coarse rock material at the front and also in the back of Tuma Padrusa. This fact might give a hint of a subsurficial connection to neighbouring ~~hills~~Toma in the close vicinity, and would support the theory of the torn apart Tamins deposits, but here is need for more field research.

## 5 Conclusion

170 The onlap of the Bonaduz Formation onto the Ils Aults constitutes novel field evidence in the debate about the timeline of geological events around Flims (Fig. 6). The following hypotheses are supported by this evidence: (i) the Tamins rockslide (Phase 1) occurred before the Flims rockslide (Phase 2), (ii) the Tamins deposits formed a dam and probably created Lake Bonaduz (Phase 1), and (iii) the Flims rockslide impacted Lake Bonaduz (Phase 2), thereby triggering push waves and a hyperconcentrated mass flow with gravel in suspension. The Bonaduz Formation between the Flims and Tamins deposits has an average thickness of ~50-70 m.

The stratigraphic position of the ~~t~~Foma-hills is related to the Flims rockslide (Phase 2) and the Bonaduz Formation (Phase 3). Some of the hills could also be related to the previous Tamins rockslide (Phase 1). The internal structure shows a core of coherent, blocky rock material, embedded in a fragmented rock mass. During the transport, an agglomeration of mixed sediments with smaller grain size (gravel-sand-mixture) drifts and overrides the ~~t~~Foma core, building an onlap in flow direction and causes a smoothed surface. The ~~t~~Foma transport is regarded as simultaneous for the coherent rock slabs in the ~~t~~Foma core, whereas the overlapping and overriding slurry is assumed to be emplaced rather late-depositional, since the deep-rooted ~~t~~Foma core has already stopped due to internal cohesion and frictional forces opposing the movement. Afterwards, outburst-flood and fluvial deposits covered parts of the Bonaduz plain (Phase 4).

185 This study provides other scientists with a better understanding of the complex history of sedimentation and erosion in the  
Flims area, and further contributes to the process understanding of sediment transport after water-rich entrainment in rock  
avalanches.

### **Author contribution**

SK and MK designed the experiments and SK and MS carried them out. SK and MS performed the simulations. SK prepared  
the manuscript with contributions from all co-authors.

### 190 **Competing interests**

One of the (co-)authors is a member of the editorial board of Earth Surface Dynamics.

### **Data availability**

Additional ERT profiles (MinMax plots) are published as a supplementary Fig. S1 online along with the article.

### **Acknowledgements**

195 We are grateful to Andreas von Poschinger, who guided and advised us during our field campaigns in Flims. We also thank  
John Clague for deep discussions and his help with fieldwork around Ils Aults. Joel Achenbach and Verena Stammberger  
assisted field and laboratory work. We further thank Adrian Pfiffner and another anonymous reviewer for their suggestions  
and remarks, which improved our manuscript. This research was supported through a PhD scholarship awarded to Sibylle  
Knapp by the German National Academic Foundation.

200



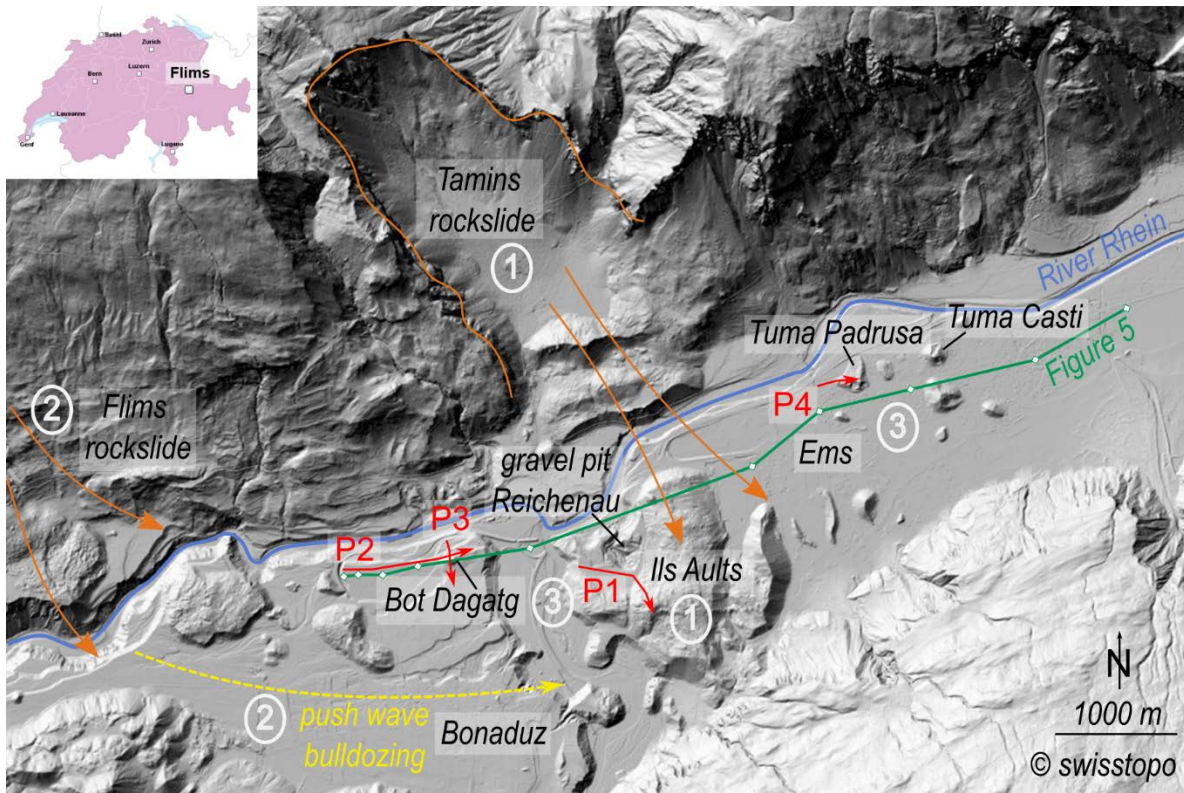


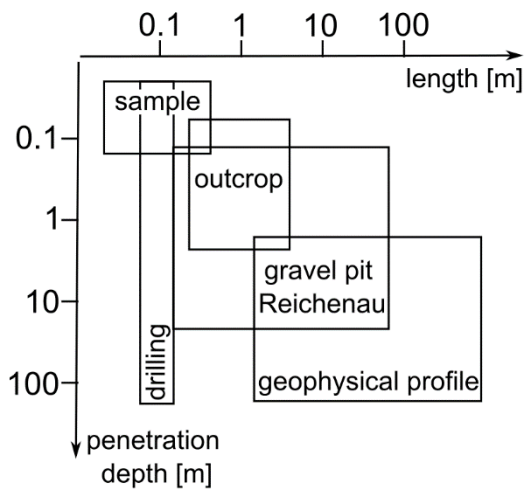
Figure 1: Overview of the study area in the Rhein River valleys depicting the scarp of the Tamins rockslide, the Ils Aults consisting of Tamins deposits, parts of the impact zone of the Flims rockslide and Tuma hills (e.g. Bot Dagatg, Tuma Padrusa and Tuma Casti). The ERT profiles P1-P4 (Fig. 4) are marked with red colour. The green profile links drilling sites (white markers) and is shown in Fig. 5. The circled numbers correspond with the evolution phases. High-resolution DEM: © swisstopo.

205



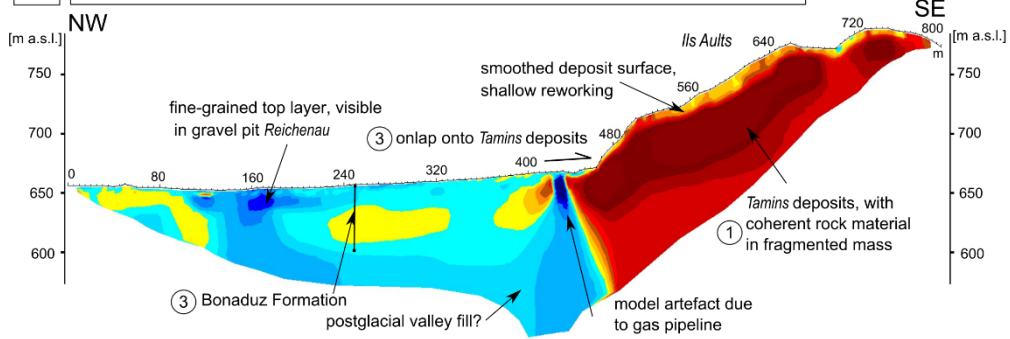


Figure 2: Sedimentological field evidence of Bonaduz Formation and Tuma hills used for ERT interpretation. a) Unstratified, normally graded gravel deposits with fine-grained matrix and vertical Pavoni pipes in gravel pit near Pardisla. b) Stratified sands and silts at the top of the Bonaduz type locality at the gravel pit in Reichenau. c) Large clasts within and on top of Bonaduz Formation. d) Outcrop with large rock slabs in Tuma hills near Pardisla. e) Shattered rockslide material with fine-grained matrix at Tuma Casti (see Fig. 1 for location). f) ERT-profile P2 investigating Bot Dagatg rolls over several drilling sites, e.g. 'B5/90'. Photo courtesy: M. Krautblatter.

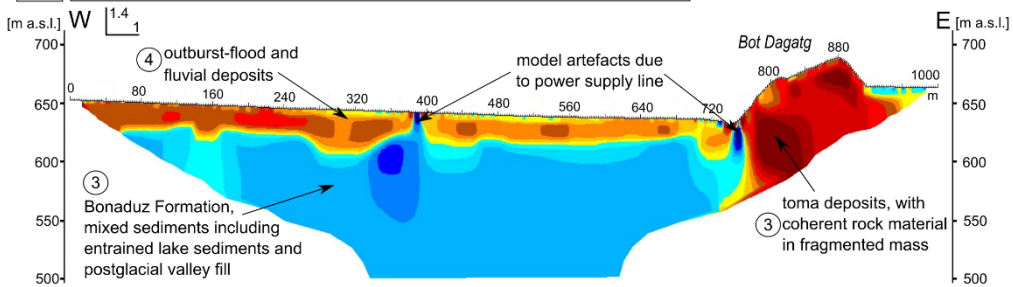


215 **Figure 3: Schematic plot highlighting the novelty of the geophysical results in the framework of a complementary method application.**

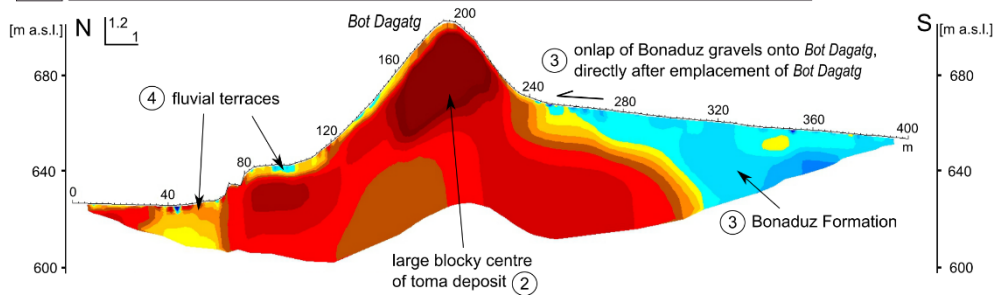
a) Profile P1, transverse to flow direction, Spacing = 5/10 m, Iteration 5, RMS-error 4.9 %



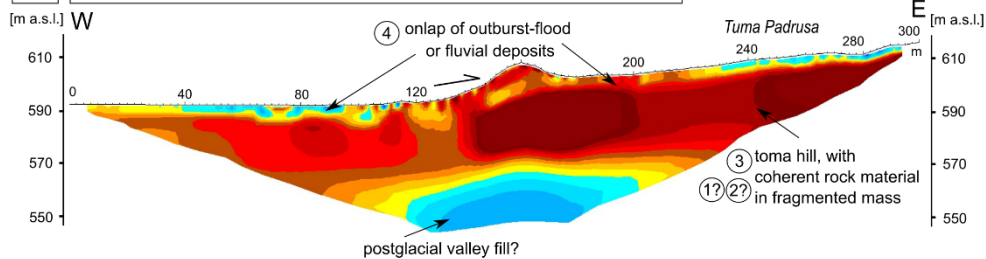
b) Profile P2, in flow direction, Spacing = 10 m, Iteration 5, RMS-error 4.9 %



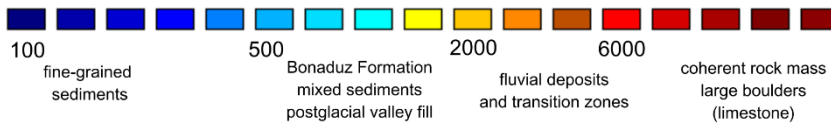
c) Profile P3, perpendicular to flow direction, Spacing = 5 m, Iteration 5, RMS-error 5.9 %



d) Profile P4, in flow direction, Spacing = 5 m, Iteration 5, RMS-error 2.4 %



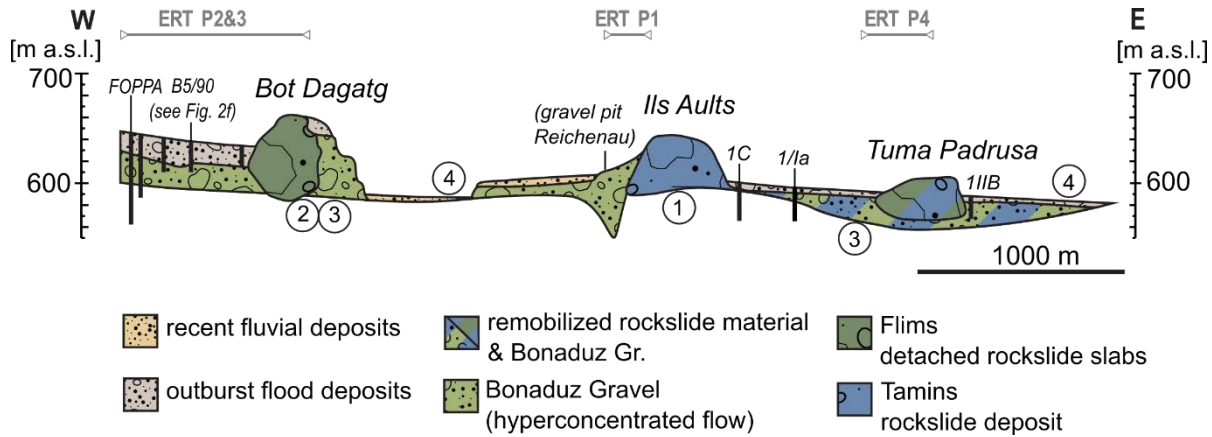
Specific resistivity [ $\Omega$ m]





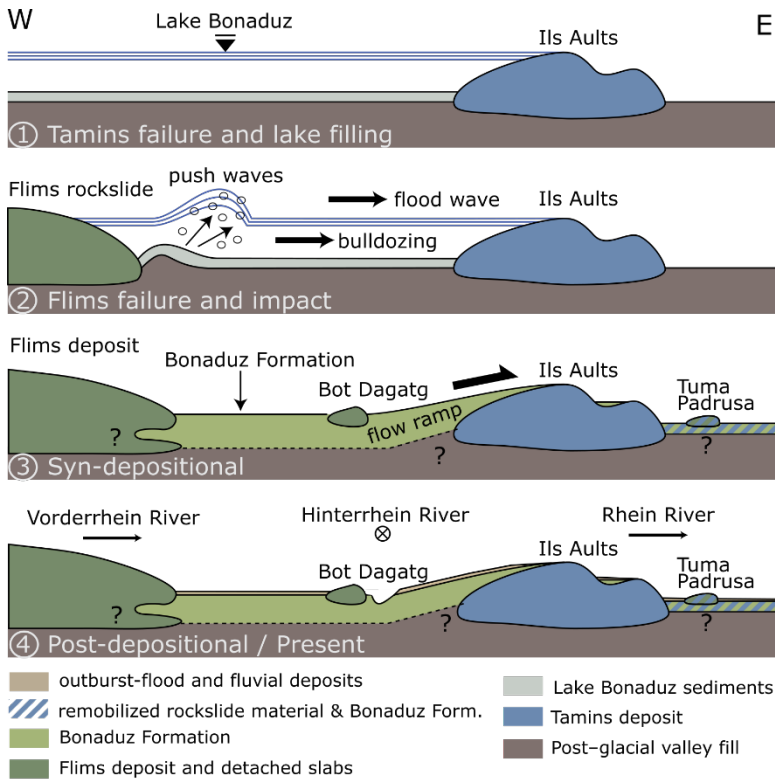
220

**Figure 4: ERT profiles P1-P4 indicating a) ~60 m thick Bonaduz Formation (Phase 3) onlapping onto Ils Aults (Phase 1), b) Bot Dagatg transported within Bonaduz Formation (Phase 3), covered with some outburst-flood and/or fluvial deposits (Phase 4), c) onlapping Bonaduz Formationl onto Bot Dagatg, and d) Tuma Padrusa containing large slabs of (exposed) coherent rock material in a fragmented rock mass. The circled numbers correspond with the evolution phases 1-4.**



225

**Figure 5: Schematic cross section interpreted from the presented ERT surveys (indicated in grey). Drilling data indicated by black bars supported the interpretation to the depth. The projection of ERT-profile P1 leads to a V-shaped body in the cross section. The circled numbers correspond with the evolution phases 1-4.**



**Figure 6: Timeline of geological events displaying the following hypotheses: Phase 1) Lake Bonaduz dammed by the Ils Aults after Tamins rockslide; Phase 2) push waves and bulldozing after impact of Flims rockslide; Phase 3) simultaneous evolution of Bonaduz**

230 **Formation, transporting ~~Toma-hills~~; Phase 4) outburst-flood and recent fluvial deposits partially cover the Bonaduz plain. Schematic sketch without scale.**

## References

- Aaron, J., Wolter, A., Loew, S., and Volken, S.: Understanding Failure and Runout Mechanisms of the Flims Rockslide/Rock Avalanche, *Frontiers in Earth Science*, 8, 224, 2020.
- 235 Abele, G.: Bergsturze in den Alpen – Ihre Verbreitung, Morphologie und Folgeerscheinungen, *Wiss. Alpenvereinshefte*, 25, 247, 1974.
- Abele, G.: Durch Bergstürze mobilisierte Muren und durch Muren transportierte Bergsturzmassen, *Österr. Geogr. Ges., Jahresber.* 1989/90, 33-39, 1991.
- Arbenz, P. and Staub, W.: Die Wurzelregion der helvetischen Decken im Hinterrheingebiet und die Überschiebung der Bündnerschiefer südlich von Bonaduz, *Vjschr. Naturforsch. Ges. Zurich*, 23-62, 1910.
- 240 Calhoun, N., Poschinger, A., Clague, J., Giardino, M., Masera, D., and Perotti, L.: New Pieces to the Flims-Tamins Rockslide Puzzle, in: *Engineering Geology for Society and Territory-Volume 2*, Springer, 899-903, 2015.
- Calhoun, N. C. and Clague, J. J.: Distinguishing between debris flows and hyperconcentrated flows: an example from the eastern Swiss Alps, *Earth Surface Processes and Landforms*, 43, 1280-1294, 2018.
- Deplazes, G., Anselmetti, F. S., and Hajdas, I.: Lake sediments deposited on the Flims rockslide mass: the key to date the largest mass movement of the Alps, *Terra Nova*, 19, 252-258, 2007.
- 245 Dufresne, A. and Geertsema, M.: Rock slide–debris avalanches: flow transformation and hummock formation, examples from British Columbia, *Landslides*, 17, 15-32, 2020.
- Bohrungen und Grundwasserbeobachtungen: <https://edit.geo.gr.ch/theme/Grundwasser>, last access: 2022-03-17.
- Heim, A.: *Bergsturz und Menschenleben*, 20, Fretz & Wasmuth, Zürich 1932.
- 250 Ivy-Ochs, S., Poschinger, A., Synal, H.-A., and Maisch, M.: Surface exposure dating of the Flims landslide, Graubünden, Switzerland, *Geomorphology*, 103, 104-112, 2009.
- Knapp, S., Mamot, P., Lempe, B., and Krautblatter, M.: Impact of an 0.2 km<sup>3</sup> Rock Avalanche on Lake Eibsee (Bavarian Alps, Germany)– Part I: Reconstruction of the paleolake and Effects of the Impact, *Earth Surface Processes and Landforms*, 46, 296-306, 2021.
- Nabholz, W. K.: Geologischer Überblick über die Sackung des mittleren Lugnez und über das Bergsturzgebiet Ilanz-Flims-Reichenau-Domleschg., *Bull. Ver. Schweiz, Petroleum-Geol. und -ingenieure*, 38-54, 1975.
- 255 Ostermann, M. and Prager, C.: Field Trip 12: Rock slope failures shaping the landscape in the Loisach-, Inn- and Ötz Valley region (Tyrol, Austria), *Geo.Alp*,
- Ostermann, M., IvyOchs, S., Ruegenberg, F., and Vockenhuber, C.: Characteristics and Dating of the rock avalanche at Pragser Wildsee/Lago di Braies (Dolomites, Italy), *Alpine and Mediterranean Quaternary*, 33, 183-189, 2020.
- 260 Ostermann, M., Sanders, D., Ivy-Ochs, S., Alfimov, V., Rockenschaub, M., and Römer, A.: Early Holocene (8.6 ka) rock avalanche deposits, Oberberg valley (Eastern Alps): Landform interpretation and kinematics of rapid mass movement, *Geomorphology*, 171, 83-93, 2012.
- Paguican, E., de Vries, B. v. W., and Lagmay, A.: Hummocks: how they form and how they evolve in rockslide-debris avalanches, *Landslides*, 11, 67-80, 2014.
- Pavoni, N.: Über die Entstehung der Kiesmassen im Bergsturzgebiet von Bonaduz-Reichenau (Graubünden), *Ecl. Geologic. Helvetica*, 61/2, 494-500, 1968.
- 265 Pfiffner, O.-A., Schlunegger, F., and Buitter, S.: The Swiss Alps and their peripheral foreland basin: Stratigraphic response to deep crustal processes, *Tectonics*, 21, 3-1-3-16, 2002.
- Piperoff, C.: *Geologie des Calanda mit einer geologischen Karte in 1:50,000*, Beiträge zur Geologischen Karte der Schweiz 1897.
- 270 Pollet, N. and Schneider, J. L. M.: Dynamic disintegration processes accompanying transport of the Holocene Flims sturzstrom (Swiss Alps), *Earth Planet Sc Lett*, 221, 433-448, 2004.
- Poschinger, A.: Weitere erkenntnisse und weitere fragen zum Flimser bergsturz, *Swiss Bulletin for Applied Geology*, 11, 35-43, 2006.
- Poschinger, A. and Haas, U.: Der Flimser Bergsturz, doch ein warmzeitliches Ereignis?, *Bulletin für angewandte Geologie*, 2, 35-46, 1997.
- Poschinger, A. and Kippel, T.: Alluvial deposits liquefied by the Flims rock slide, *Geomorphology*, 103, 50-56, 2009.
- 275 Poschinger, A. and Ruegg, T.: Die Churer Tomahügel, ein besonderes Zeugnis der Landschaftsgenese, *Jahresbericht der Naturforschenden Gesellschaft Graubünden*, 93-100, 2012.
- Poschinger, A. v., Wassmer, P., and Maisch, M.: The Flims rockslide: history of interpretation and new insights, in: *Landslides from massive rock slope failure*, Springer, 329-356, 2006.
- Prager, C., Krainer, K., Seidl, V., and Chwatal, W.: Spatial features of Holocene sturzstrom-deposits inferred from subsurface investigations (Fernpass rockslide, Tyrol, Austria), *Geo. Alp*, 3, 147-166, 2006.
- 280 Scheller, E.: *Geophysikalische Untersuchungen zum Problem des Taminser Bergsturzes*, Diss ETH Zürich, Zürich, Nr. 4560, 1970.

- Schneider, J.-L., Pollet, N., Chapron, E., Wessels, M., and Wassmer, P.: Signature of Rhine Valley sturzstrom dam failures in Holocene sediments of Lake Constance, Germany, *Sedimentary Geology*, 169, 75-91, 2004.
- van Husen, D., Ivy-Ochs, S., and Alfimov, V.: Mechanism and age of late glacial landslides in the Calcareous Alps; the Almtal, Upper Austria, *Austrian Journal of Earth Sciences*, 100, 114-126, 2007.
- 285 Wyss, R. and Wiederkehr, M.: Blatt 1215 Thusis. *Geologischer Atlas Schweiz 1:25'000, Erläuterungen*, 108 p., 2017.