

# Geomorphic signature of relief rejuvenation in Sierra Morena (Betic forebulge, Spain): evidence of segmented uplift in a strongly strain-partitioned, tectonic scenario

Inmaculada Expósito<sup>1</sup>, Alejandro Jiménez-Bonilla<sup>1</sup>◆, Michele Delchiaro<sup>2</sup>◆, José L. Yanes<sup>1</sup>, Juan C. Balanyá<sup>1</sup>, Francisco Moral-Martos<sup>1</sup>, Marta Della Seta<sup>2</sup>

<sup>1</sup>Departamento de Sistemas Físicos, Químicos y Naturales, Universidad Pablo de Olavide, Seville, 41013, Spain

<sup>2</sup>Department of Earth Sciences, Sapienza University of Rome, Rome, 00185, Italy

◆ These authors contributed equally to this work

*Correspondence to:* Inmaculada Expósito (iexpram@upo.es)

**Abstract.** The foreland relief of Alpine orogenic belts is often rejuvenated due to the intraplate propagation of orogenic deformation. Thus, in these long-lived areas, the localisation of relief rejuvenation may be largely controlled by the reactivation of previous mechanical discontinuities. In this regard, we explored the relationship between the relief rejuvenation pattern and the distribution, geometry and kinematics of faults in a wide segment of the Betics foreland (Sierra Morena, Southern Spain). Specifically, we focused on the forebulge, a WSW-ENE flexural relief that formed, paired to the Betics foreland basin, in response to orogenic load. For this purpose, we applied both qualitative and quantitative geomorphological tools, including geomorphic indices and knickpoint pattern modelling in  $\chi$  space. We found that the pattern of relief rejuvenation responds to large-scale flexural uplift coupled with the tectonic activity of two groups of faults that often show evidence of reactivation: overall WSW-ENE faults contributing to both regional NNW-SSE relief segmentation and vertical extrusion of the forebulge, and NW-SE reverse faults associated with an outstanding WSW-ENE topographic segmentation in the west of the study area. In addition, our knickpoint modelling suggests that the faults related to the southernmost Sierra Morena mountain front have been particularly active in recent times, although their activity span and the relative uplift that they accommodate differ along the Sierra Morena/foreland basin limit. The knickpoint pattern also suggests a significant reorganisation of the analysed drainage basins. The strain partitioning accommodated by the structures involved in relief rejuvenation suggests the intraplate propagation of the transpressional deformation reported from the Betics external fold and thrust belt.

## 1 Introduction

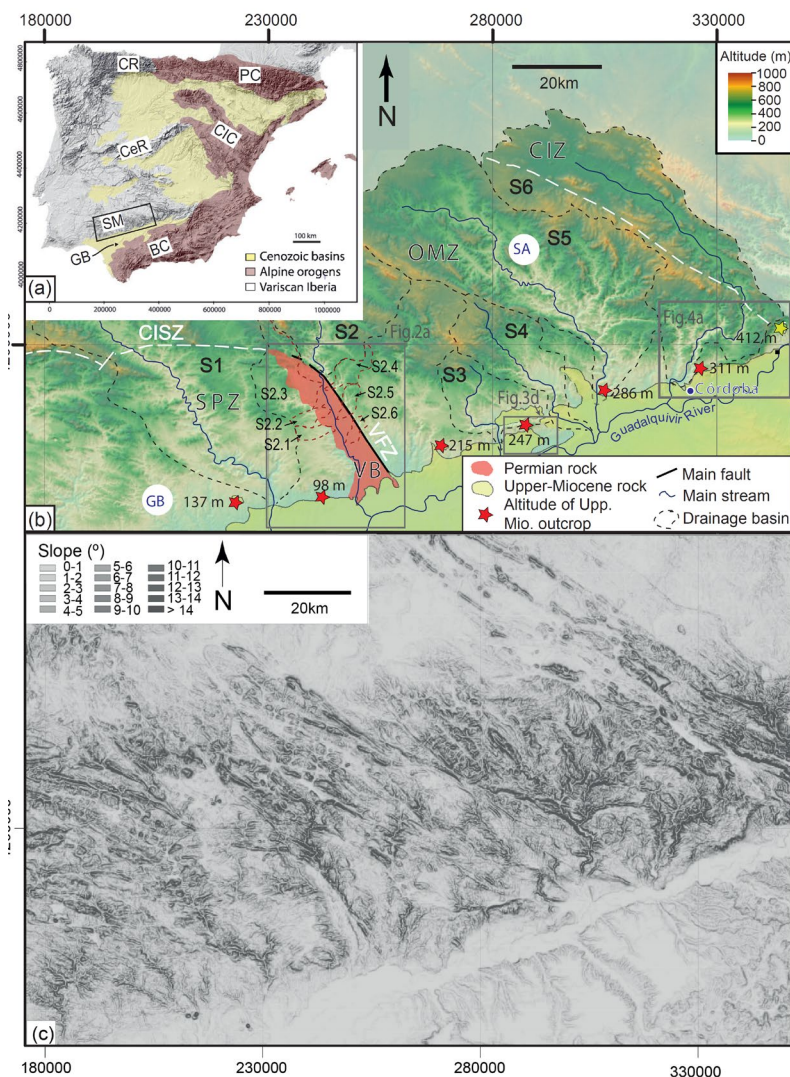
Relief rejuvenation of geologically ancient areas often occurs in response to intraplate deformation. In these long-lived areas, reactivation of pre-existing structures is a common mechanism for strain accommodation, which is often favoured over the generation of new structures (e.g., Butler et al., 1997). Thus, previous discontinuities can be expected to localise the relief rejuvenation associated with recent or active tectonics, which can therefore be analysed to delve into the kinematics of recent deformation.

The relief of the Variscan basement outcropping in the western and central Iberian Peninsula is characterised by roughly W-E or WSW-ENE topographic highs (1,000 to 2,500 m a.s.l.) separated by Cenozoic sedimentary basins (Fig. 1a). On the basis of both numerical and analogue models, these topographic domains have been mainly interpreted as the expression of lithospheric folding (Cloething et al., 2002; Fernández Lozano et al., 2012) due to the superposition of successive intraplate deformation phases from the Late Cretaceous-Early Cenozoic onwards. They have been mainly associated with plate-boundary activity both to the north (Pyrenean-Cantabrian orogen; e.g., Roest and Srivastava, 1991; Teixell., 2018) and to the south (Gibraltar Arc; e.g., Spakman, W. and Wortel, R., 2004; Balanyá et al., 2012) of Iberia (Fig.1a). In the upper crust, such intraplate deformation is often accommodated by reactivation of pre-existing faults, which largely control the spatial distribution and orientation of the topographic features (De Vicente et al., 2007; Martín Gonzalez, 2009; Brum da Silveira et al., 2009; Vázquez-Vilchez et al., 2015).

The southernmost topographic high (900–1,300 m a.s.l.) within the Variscan Iberia is Sierra Morena (Fig. 1a, b). It is a WSE-ENE relief, approximately 600 km-long and 80 km-wide, WSW-ENE relief, the southern limit of which coincides with a regional linear escarpment separating the foreland (i.e., the Variscan Iberian Massif) from the Cenozoic Guadalquivir foreland basin of the Betic Chain (northern branch of the Gibraltar Arc). Sierra Morena as a whole is interpreted as a forebulge, a positive relief that develops, paired with foreland basins subsidence, due to lithospheric flexure in front of major fold-and-thrust belts (e.g., Flemings and Jordan, 1990; DeCelles, 2012, and references therein). In this tectonic context, the Sierra Morena forebulge uplift is linked to the lithospheric flexure of the Iberian Massif under the Betics orogenic wedge load, enhanced by the buckling of the Iberian lithosphere (Cloething et al, 2002; García-Castellanos et al., 2002). Concerning this folding, a NW-SE-oriented compression, connected to the convergence between Africa and Eurasia, is invoked for the neotectonic intraplate deformation of Iberia (Herraiz et al., 2000; Cloething et al, 2002).

This interpretation of the overall Sierra Morena relief as a flexural forebulge folded by NW-SE-oriented buckling is mainly based on the numerical modelling of the lithosphere rheological behaviour (Cloething et al, 2002; García-Castellanos et al., 2002). Nevertheless, little work has been done to address the geomorphological imprint of this tectonic model in Sierra Morena. In this regard, previous studies propose that the tectonic setting for the current deformation of the western Betics fold-and-thrust belt (FTB) includes the westward migration of the Gibraltar Arc hinterland (Balanyá et al., 2012; Gutscher et al., 2002). This would imply that the tectonic mechanism responsible for the Miocene accretion of the Betics (e.g., Faccenna et al., 2004; Balanyá et al., 2007) is still active. Additionally, analytical and analogue models (Díaz-Azpiroz et al., 2014; Barcos et al., 2015, 2016) provide a N99°E–N109°E trending horizontal velocity vector to explain the Neogene to recent dextral transpressional kinematics observed in segments of the western Betics FTB (see also García et al., 2016; Jiménez-Bonilla et al., 2015). This velocity vector orientation fits well with such westward motion of the hinterland relative to the FTB.

Irrespective of the current tectonic setting, Neogene, or even younger activity has been reported in specific areas of Sierra Morena. Thus, in the Guadiamar drainage basin (westernmost Sierra Morena, GB in Fig. 1c), river migration due to Holocene regional tilting has been described (Salvany, 2004). Additionally, seismicity consistent with reactivation of pre-existing



**Fig.1. Location and topography of the study area. (a) Topographic domains of the Iberian Peninsula related to the main geological units: BC, Betic Chain; GB, Guadalquivir basin; SM, Sierra Morena; CeR, Central Range; CR, Cantabrian Range; CIC, Central Iberian Chain, PC, Pyrenean Chain. (b) Altitude map of the study area (see location on Fig.1a); S1 to S6: drainage basins analysed in this study (see text for explanation); S2.1 to S2.6 are analysed sub-catchments of S2; OMZ, Ossa-Morena Zone; SPZ, South Portuguese Zone; VB, Permian Viar Basin; VFS, Viar fault system; SISZ, South Iberian Shear Zone; GB. Guadiamar basin; SA, Sierra Albarrana. (c) Slope maps of the same area; note the preservation of low-slope relief surfaces on the interfluvial surfaces of Sierra Morena. Maps in (b) and (c) are extracted from the 12 m resolution TanDEM-X DEM (Wessel, 2016). The reference system is WGS84 UTM 30N.**

70

75 fractures has been pointed out in the Sierra Albarrana area (SA in Fig. 1c; Herraiz et al., 1996), and the Upper Miocene infill of the Guadalquivir foreland basin appears locally intersected by faults (Expósito et al., 2016; Matas et al., 2010 a).

In this study, we assume that this recent tectonic activity, linked to intraplate tectonics, must have rejuvenated the Sierra Morena relief. Therefore, its geomorphological features must be an expression, among other factors, of its current tectonic setting. Furthermore, we expect that the Sierra Morena relief rejuvenation pattern is significantly conditioned by the reactivation of those previous structures that are favourably oriented.

In this regard, here we analyse the relief rejuvenation of an approximately 130 km-long segment of Sierra Morena (Fig. 1b), which is potentially related to recent reactivation of pre-existing structures in the Betics foreland. To this end, we firstly analyse the space distribution of key geomorphic features that would characterize relief rejuvenation: preserved relicts of Miocene landscape surfaces, patches of shallow-water marine Miocene deposits, incised meanders, active knickpoints, perched terraces, stream gaps and piracy. Secondly, we localise the discrete tectonic structures that accommodate differential uplift and relief segmentation within the forebulge. We therefore carried out qualitative landform interpretations and quantitative analyses focusing on tributary drainage networks located on the Guadalquivir River right bank, i.e., those streams draining the Betics forebulge southward. The kinematics of these reactivated structures will be used in this study to explore the recent, even current, tectonic scenario compatible with the observed reactivation pattern. Finally, we will discuss previous geophysical data (Herraiz et al., 2000; De Vicente et al., 2007) and relief modelling (García-Castellanos et al., 2002) as viewed from the new obtained geomorphological and structural data.

Our results prove that the characterisation of relief rejuvenation patterns together with the kinematic analysis of the main relief-controlling structures provide information about both the roll of reactivated structures in the relief rejuvenation modes and the tectonic setting in which rejuvenation occurs.

## 95 **2 Geological setting and regional topographic features.**

In this study, we analyse an approximately 130 km-long segment of the western and central Sierra Morena, including its boundary with the Guadalquivir River valley (Fig. 1). This topographic limit coincides with the contact between two geological units: the Betic foreland to the north, constituted by the Iberian Massif, and the Betic foreland basin to the south.

The Iberian Massif crops out in western and central Iberia, also constituting the buried basement of the main Cenozoic basins (Fig. 1a). This geological domain belongs to the Variscan Chain, a late Paleozoic orogenic belt, that extends from Morocco to Central Europe. Regarding its distinctive tectonic features, the southernmost Iberian Massif has been divided into three different zones, from SW to NE: the South Portuguese Zone (SPZ), the Ossa-Morena Zone (OMZ) and the Central Iberian Zone (CIZ). Most of our study area belongs to the SPZ and the OMZ, with the CIZ only represented in its NE limit (Fig. 1b). In our study area, the SPZ is composed of pre-orogenic Devonian to Carboniferous metadetritics, profusely intruded by igneous rocks, which are locally covered by unconformable post-orogenic Permian sequences (e.g., Oliveira, 1990; Simancas, 1983). In its northern limit, a narrow band of slates with interbedded tuffites and quartzites crops out (Matas et al, 2010 b). The OMZ

and the CIZ are mainly formed by Neoproterozoic to Carboniferous metadetrritic rocks, although lower Cambrian carbonate formations are well represented. Volcanics are frequently interbedded in the Neoproterozoic rocks of both zones as well as in the lower Cambrian to Ordovician sequences of the OMZ. Plutonic rocks mainly crop out related to the SPZ/OMZ and ZOM/CIZ boundaries (Matas et al., 2010 a, b).

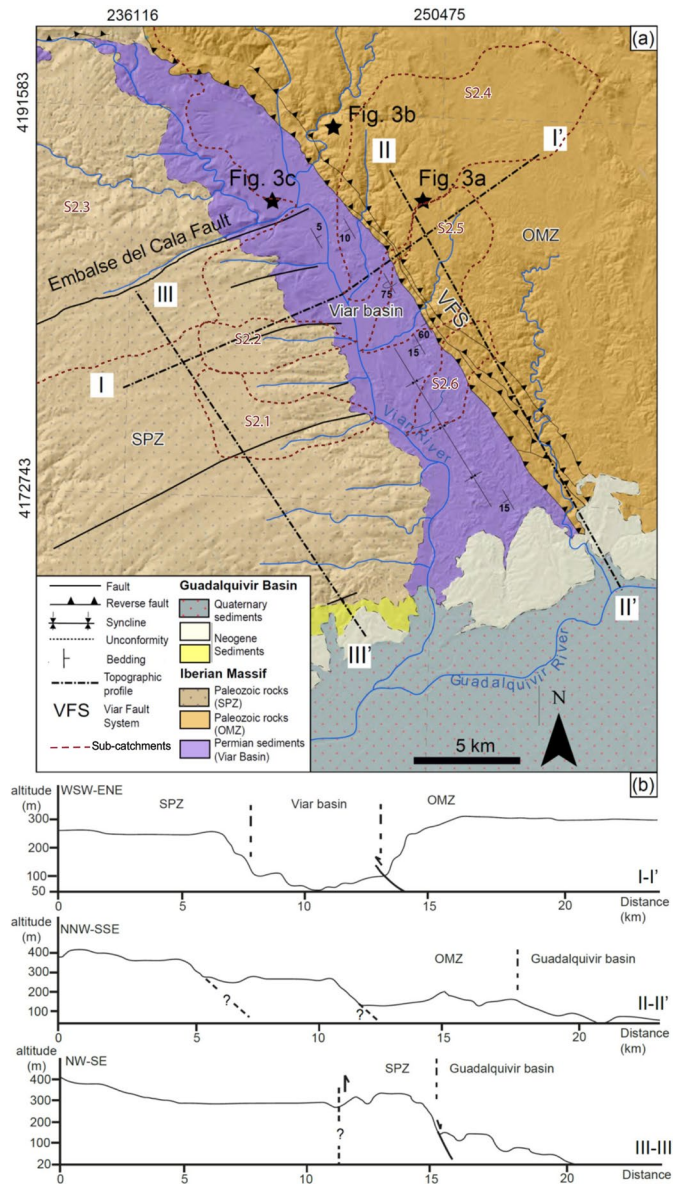
The current regional limit between the OMZ and the SPZ is located along the transpressive, top to the SW, Southern Iberian Shear Zone (Figs. 1b). It is interpreted as part of a complex, long-lived Variscan suture, including amphibolites of oceanic affinity and high-pressure/low-temperature metamorphic rocks (e.g., Crespo-Blanc and Orozco, 1988; Díaz-Azpiroz and Fernández, 2005; Fonseca and Ribeiro, 1993; Simancas et al., 2003; Pérez Cáceres et al., 2015 and references therein). In our study area, this boundary is hidden to the SE under the infill of the Permian Viar Basin (Figs. 1b, 2a), a NW-SE elongated outcrop, interpreted as a late Variscan intramontane basin with an infill made up of lower Permian detrital and volcanic rocks (Simancas, 1983; García-Navarro and Sierra, 1998). According to previous interpretations, the basin would have been inverted since the end of the Early Permian to the Middle Triassic (García-Navarro and Fernández, 2004). This inversion would have produced both an open N150°E-oriented syncline and the NW-SE Viar reverse fault system (VFS) along its NE limit. This Permian sedimentary basin coincides with the current Viar river drainage basin (Fig. 1b) downstream of the VFS.

In our study area, the Iberian Massif records a complex Variscan deformation characterised by mainly Devonian to lower Carboniferous, NW-SE trending folds and thrusts (e.g., Expósito et al. 2002; Mantero et al, 2011; Simancas et al., 2003). It should be noted that pervasive fractures of diverse orientation and kinematics have been reported in our study area cutting the main Variscan structures. Many of them have been attributed to the late stages of the Variscan deformation (e.g. García-Navarro and Fernández, 2004), although fractures with Cenozoic activity have been often reported close to the Iberian Massif/Guadalquivir foreland basin limit (e.g., Matas et al., 2010 a; Expósito et al. 2016; Vázquez-Vílchez et al., 2015).

During the Mesozoic tectonic evolution of southern Iberia, the Iberian Massif relief was attenuated towards the SE by the formation of the rifted South Iberian paleomargin, separated from the continental Alboran Domain margin by the Tethys Ocean (Dercourt et al., 1986; Faccenna et al., 2004). The westward migration of the Alboran Domain led to the closure of this Alpine oceanic basin in the Early Miocene, giving rise to the formation of the Betic Chain on the South Iberian paleomargin (Balanyá and García-Dueñas, 1987). In the Middle Miocene, the Betic orogenic load provoked the lithospheric flexure of the Betic foreland (Van der Beek and Cloetingh, 1992), thus creating the Betic foreland basin (i.e., the Guadalquivir foreland basin) coupled with the forebulge just to the north of the Betic mountain front (García-Castellanos et al. 2002). The Guadalquivir foreland basin remained as a marine basin connected to the Atlantic Ocean from the Middle Miocene to the beginning of the Pliocene when the asynchronous westward uplift of the basin led to the coast migration to the SW (e.g., Fernández et al., 1998; Gonzalez-Delgado et al., 2004; Sierro et al., 1996). During the Quaternary, the Guadalquivir River drainage system evolved and the Upper Miocene, shallowing-upward marine sediments were partially covered by alluvial deposits.

In our study area, the oldest infill of the Guadalquivir foreland basin corresponds to Tortonian calcirudites and calcarenites, which unconformably overlie the pre-Mesozoic rocks of the basement. On top of them, Messinian basinal deposits are

140 represented by marly clays. Quaternary deposits consist of alluvial conglomerates, sands, silts and clays related to the Guadalquivir River floodplain and to an extensive strath terrace system (Moral et al., 2013).



145 **Fig.2. (a) Simplified geological/hillshade relief map of the Permian Viar Basin (see location on Fig.1b); VFS, Viar fault system; OMZ, Ossa-Morena Zone; SPZ, South Portuguese zone, S2.1 to S2.6 (dashed red lines) are analysed sub-catchments of S2. (b) Topographic profiles across both the Viar basin (I-I') and the Iberian Massif/Guadalquivir basin boundary (II-II' and III-III'); the dashed line indicates the position of faults inferred from the observed paleo-peneplain downthrow. Altitude base and reference system as in Fig.1.**

As previously mentioned, the southern boundary of the Iberian Massif basin also separates two distinctive relief domains:  
150 Sierra Morena to the north, and the Guadalquivir River alluvial plain to the south, set on the most low-lying areas of the  
Guadalquivir foreland basin.

The main summits of Sierra Morena are 900 to 1,300 m a.s.l. high, being 900–1,000 m a.s.l. in the study zone. Traverse  
topographic profiles across Sierra Morena present a remarkable asymmetry. The relief of the main mountain ridges related to  
the southern Iberian subplateau and the Guadalquivir valley is about 300–400 m a.s.l. and 800–900 m a.s.l., respectively.  
155 Furthermore, the northern boundary of Sierra Morena is a gently dipping transitional piedmont, whereas the southern boundary  
coincides with a well-defined escarpment of low sinuosity.

The NW-SE orientation of the main streams draining the southern slope of Sierra Morena is determined in their upper reaches  
by the Variscan orogenic grain (Figs. 1b, c). Nevertheless, the Variscan residual relief gradually disappears toward the limit  
with the Guadalquivir River basin, and is substituted by an erosional, relict surface of plausible Middle-Late Miocene age  
160 (Yanes et al., 2019).

At the foot of Sierra Morena, the Guadalquivir River valley is a WSW-ENE-oriented depression limited to the east and south  
by the Betics mountain front, and to the west by the Atlantic Ocean. In our study area, it is characterised by an overall low-  
lying relief with altitudes ranging between 30 and 200 m a.s.l. in the Neogene sediments, and between 10 and 100 m a.s.l. in  
the Quaternary alluvium. Nevertheless, its easternmost sector exhibits a moderately rugged topography with elevations that  
165 reach up to 800 m a.s.l. Furthermore, the Guadalquivir River is in a markedly asymmetric position, located at the northern  
edge of both its valley floor and alluvial deposits. Terraces that developed on the wider left-hand slope of the Guadalquivir  
River valley are gently tilted northwards (Moral et al., 2013).

### 3 Approach and method

As stated above, the characterisation of the Sierra Morena relief rejuvenation pattern and the identification of the structures  
170 localising such rejuvenation is crucial for our study objective. First, we have searched for signs of relief rejuvenation by  
applying both geomorphic qualitative methods and geomorphic indices. The purpose of this was to detect key relief features  
of relief rejuvenation as well as the potential involved structures (mainly faults). We then proceeded to use field-based  
structural analysis methods to determine the kinematic regime of these faults by means of different kinematic indicators such  
as slickenlines or brittle S-C fabrics.

175 Our analysis focused on six main drainage basins showing signs of relief rejuvenation. They are located on the right slope of  
the Guadalquivir river valley, i.e., those draining southern Sierra Morena (Fig. 1b). Additionally, some minor sub-basins have  
also been included (see also Fig. 2a). For this, we used the 12 m resolution TanDEM-X DEM (Wessel, 2016).

In terms of the qualitative approach, we focused our attention on those drainage network features indicative of relief  
rejuvenation (stream piracy, wind or water gaps, incised meanders, etc.), as well as on the geometry and distribution of a  
180 Miocene erosional relict surface that often occupies interfluves. Our qualitative analyses are based on the landscape

morphometry, which has been characterised by means of local relief maps (difference between maximum and minimum elevation by using neighbourhood statistics, 15x15 pixels), as well as slope maps. We also applied several geomorphic indices, often used in low-rate tectonic regions (e.g., Silva et al., 2003; Pérez-Peña et al., 2009), to better determine the recent tectonic activity associated with the main mountain fronts. After that, we analysed the kinematics of those structures with a position and geometry that are compatible with the observed modes of relief rejuvenation.

Finally, we tested the relationship between those structures associated with the main rejuvenated mountain fronts, the distribution of knickpoints on river profiles in  $\chi$ -space (Perron and Royden, 2013; Schwanghart et al., 2021) and the drainage divide network migration (Scherler and Schwanghart, 2020; Schwanghart and Scherler, 2020). This analysis enables us to delve further into the relationship between the analysed faults and the current drainage dynamics. It also sheds light on the relative relief rejuvenation among the drainage basins linked to the fault activity in Sierra Morena.

### 3.1 Geomorphic indices

We calculated several quantitative geomorphic indices on selected areas of interest, which are very sensitive to changes in the river equilibrium profile.

- Mountain front sinuosity,  $S_{mf}$  (Bull and McFadden, 1977; Bull, 1978), was defined as:

$$S_{mf} = \frac{L_{mf}}{L_s}, \quad (1)$$

where  $L_{mf}$  is the length of the mountain foot and  $L_s$  is the length of the straight line that links the mountain front tips. Values 1 indicate a straight front geometry potentially related to recent tectonic activity of faults. Nevertheless,  $S_{mf}$  values also depend on factors such as the lithology and fault dips (Keller and Pinter, 2002; Jiménez-Bonilla et al., 2015). To avoid bias in our results, we applied  $S_{mf}$  to mountain fronts related to faults dipping between 60° and 80° that bring similar lithologies into contact. Mountain fronts were divided in segments between 2 and 10 km long. The slope break line determining the position of mountain fronts was established at slope values of 8°.

- Valley floor-to-height ratio,  $V_f$  (Bull and McFadden, 1977), was calculated for streams that run perpendicular to mountain fronts.  $V_f$  is defined as:

$$V_f = \frac{V_{fv}}{(E_{ld} - E_{sc}) - (E_{rd} - E_{sc})}, \quad (2)$$

where  $V_{fv}$  is the width of the valley floor,  $E_{ld}$  and  $E_{rd}$  are the elevations of the left and right valley divides respectively, and  $E_{sc}$  is the elevation of the valley floor.

Two types of valleys are traditionally distinguished according to  $V_f$  values (e.g., Keller and Pinter, 2002; Silva et al., 2003; Giaconia et al., 2012; Jiménez-Bonilla et al., 2015): V-shaped valleys ( $V_f < 1$ ) are associated with active down-cutting streams while flat-bottom valleys ( $V_f > 1$ ) testify to large lateral erosion and/or sedimentation related to relatively tectonic quiescence.

This index has been combined with  $S_{mf}$  in previous work as a proxy to test recent tectonic activity (e.g., Silva et al., 2003).



- Drainage basin hypsometric curve and hypsometric integral, *HI* (Keller and Pinter, 2002).

The drainage basin hypsometric curve shows the normalised basin area ( $a/A$ ) above a normalised altitude ( $h/H$ ) (Strahler, 1952). The shape of the hypsometric curve has been related to the degree of the dissection of the basin. Upward convex hypsometric curves are associated with “young” and weakly eroded basins, while concave curves indicate highly eroded basins.

215 S-shaped curves are frequently associated with moderately eroded basins (Keller and Pinter, 2002), however they can also feature residual reliefs recently uplifted and reactivated (e.g., Azañón et al., 2012), i.e., relief rejuvenation. This is the reason why special attention was paid to S-shaped curves. The area below the hypsometric curve, which ranges between 0 and 1, is the hypsometric integral (*HI*). Values close to 1 indicate weakly eroded regions.

We have plotted the hypsometric curve and calculated HI values for several right tributaries of the Guadalquivir River.

## 220 3.2 $\chi$ -Space analysis of river profiles

- DEM correction and knickpoints extraction.

Pre-processing was performed in order to correct longitudinal profiles prone to data artifacts. Thus, the frequent presence of artificial dams in Sierra Morena constitutes a source of error that affects the quality of the knickpoint analysis results. To tackle this issue, we first mapped all the artificial dams as well as the tributary inlets into artificial lakes. The detection of artificial

225 dams was performed through remote sensing data, such as Google Earth satellite optical images (2018 Landsat Imagery).

The TopoToolbox “mincosthydrocon” function (Schwanghart and Scherler, 2014) was used for the correction with min-max method. Afterwards, we analysed selected stream networks upstream of fault segments, mostly located at the Sierra Morena southern mountain front, exhibiting qualitative signals of relief rejuvenation.

On each basin, we extracted knickpoints using the TopoToolbox “knickpointfinder” function (Schwanghart and Scherler, 2014, 230 2017). The estimate of the uncertainty was performed using the constrained regularised smoothing or CRS technique (Schwanghart and Scherler, 2017). The tolerance value obtained by the CRS application is 38 m.

-  $\chi$  transformation of longitudinal river profiles.

For the river profile analysis, we applied the integral approach introduced by Perron and Royden (2013) of the Stream Power Incision Model (SPIM, Lague, 2014). According to the SPIM, the evolution of the river profile is described as the change

235 through time  $t$  in elevation  $z$  of a channel point located to an  $x$  upstream horizontal distance, which can be calculated using the expression:

$$\left| \frac{\partial \hat{z}(x,t)}{\partial \hat{t}} = U(x,t) - K(x,t) A(x,t)^m \left| \frac{\partial \hat{z}}{\partial \hat{x}} \right|^n, \right. \quad (3)$$

where  $U$  is the uplift,  $A$  is the drainage area,  $m$  and  $n$  are positive empirical constants and  $K$  is the erodibility.

If both processes are perfectly balanced, a state of a dynamic equilibrium or steady state ( $\partial \hat{z} / \partial \hat{t} = 0$ ) is assumed. In this case, 240 the Equation 3 can be rearranged as:

$$\left| \frac{dz}{dx} \right| = \left( \frac{U}{K} \right)^{\frac{1}{n}} A(x)^{-\frac{m}{n}} \quad (4)$$

where U and K do not vary in time and in space, and drainage configurations remain unchanged. Equation 4 predicts a power-law relationship between slope and drainage area A (Hack, 1957).

Perron and Royden (2013) proposed a transformation of the horizontal spatial coordinates which linearises the power-law relation, by the integration of  $dz/dx$  with respect to  $x$  from a base level  $x_b$  to an arbitrary upstream point  $x$  of the channel.

$$\int \frac{dz}{dx} dx = z(x_b) + \left( \frac{U}{KA_0^m A(x)^m} \right)^{\frac{1}{n}} \int_{x_b}^x \left( \frac{A_0}{A(x)} \right)^{\frac{m}{n}} dx \quad (5)$$

where  $A_0$  is an arbitrary scaling area. Performing the integration, Equation 5 becomes:

$$z(x) = z(x_b) + \left( \frac{U}{KA_0^m} \right)^{\frac{1}{n}} \chi, \quad (6a)$$

with

$$\chi = \int_{x_b}^x \left( \frac{A_0}{A(x)} \right)^{\frac{m}{n}} dx \quad (6b)$$

Even if a river is not in a topographic steady state, the advantage of using the  $\chi$  plot of its longitudinal profile is that transient signals with a common origin (e.g., fault-related knickpoints), propagating upstream through different channels, along either the main stem or tributaries, plot in the same location in ~~both~~ transformed coordinates  $\chi$  and  $z$  (Perron and Royden, 2013; Schwanghart and Scherler, 2020). Additionally, in steady state conditions, the main stem and tributaries become aligned once the best  $m/n$  value has been determined. Thus, transient signals are easier to identify when the transformed profiles deviate from such trend. Thus,  $\chi$  serves as a metric for distances travelled by perturbations upstream in the river network (Fox et al., 2014). For this reason, we consider as base level  $x_b$  the intersection between streams and fault traces. Furthermore, to find the best  $m/n$  value for each basin, i.e., with the best-fit linear relationship between  $\chi$  and elevation (Perron and Royden, 2013), we used the TopoToolbox “mnoptimvar” and “robustcov” functions (Schwanghart and Scherler, 2014). This function finds the  $m/n$  value that minimizes the  $\chi$ -disorder, intended as the variability of elevation values for similar values of  $\chi$  (Hergarten et al., 2016).

Finally, according to Eq. (6a), the slope of  $\chi$ -profiles is dependent to the uplift rate and the erodibility: it is directly proportional to the uplift rate (U) and inversely proportional to the erodibility (K). In general, the chi-slope is a proxy for the actual erosion rate, which can be transferred to uplift rates only for equilibrium conditions. In this regard, we assume that there are no strong lithological contrasts in the study area, justifying that the lithological control on fluvial erosion is quite homogeneous (K constant). Then, the slope of  $\chi$  plots can be interpreted as a

270 proxy of the tectonic activity. In this sense, the uplift  $U$  can be considered constant for each analysed basin, since each one  
depends on a different fault and the upstream area can be assumed as an uplifted block.

275 - Knickpoint pattern modelling.

In order to cluster the different knickpoint sequences associated with fault activity, we implemented a parametric density  
distribution technique using the TopoToolbox “rhoHat” function (Schwanghart et al., 2021), which also calculates confidence  
intervals using bootstrapping. In this regard, we estimated the dependence ( $\rho$ ) of a spatial process (knickpoints) on a spatial  
covariate ( $\chi$  transformed distance from the outlet), implementing the calculus of the parametric density distribution weighted  
280 by the knickpoint height. Knickpoint height is the elevation difference between the fitted profile and a knickpoint. The number  
of bootstrap samples was set to 10000, while the bandwidth of the gaussian kernel was 250 m. 95% bootstrapped confidence  
intervals were set.

In order to isolate the bias due to the artificial dam’s artefacts, we compared  $\rho$  values obtained with the entire dataset with  
those obtained removing knickpoints associated with artificial dams

285

### 3.3 Drainage divide network analysis

The divide network, as well as its relation to topography, has been analysed to investigate possible inconsistencies between  
expected and observed knickpoint patterns. For that purpose, we followed the method described in Scherler and Schwanghart  
(2020). In detail, we extracted drainage divides based on the drainage basin boundaries that we obtained for drainage areas at  
tributary junctions and drainage outlets. We then organised the collection of divide segments into a drainage divide network  
and ordered it with ordering scheme “Topo” (according to the name of the algorithm), in which divide orders increase by one  
at each junction. As regards topographic metrics, Scherler and Schwanghart (2020) focused on the hillslope relief  $HR$ , defined  
as the elevation difference between a point on the divide and the point on the river that it flows to. To quantify the morphologic  
asymmetry of a divide, the across-divide difference in hillslope relief ( $\Delta HR$ ) is normalised by the across-divide sum in hillslope  
290 relief ( $\Sigma HR$ ). The divide asymmetry index (DAI) was subsequently computed as follows:

$$DAI = \left| \frac{\Delta HR}{\Sigma HR} \right|, \quad (6)$$

The DAI ranges between 0 for entirely symmetric divides and 1 for the most asymmetric divides.

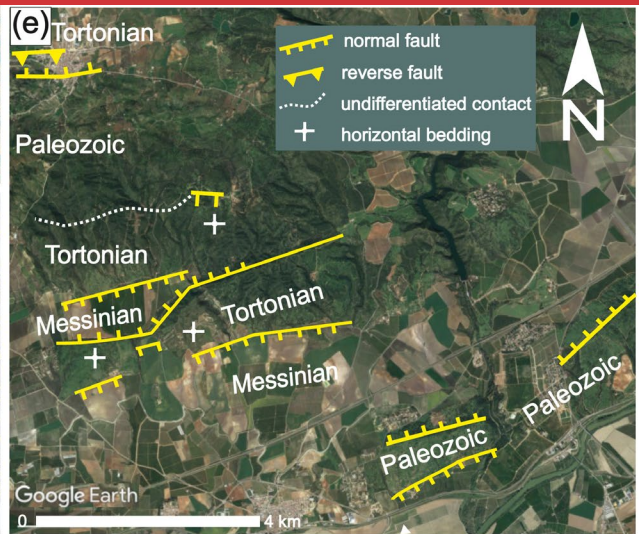
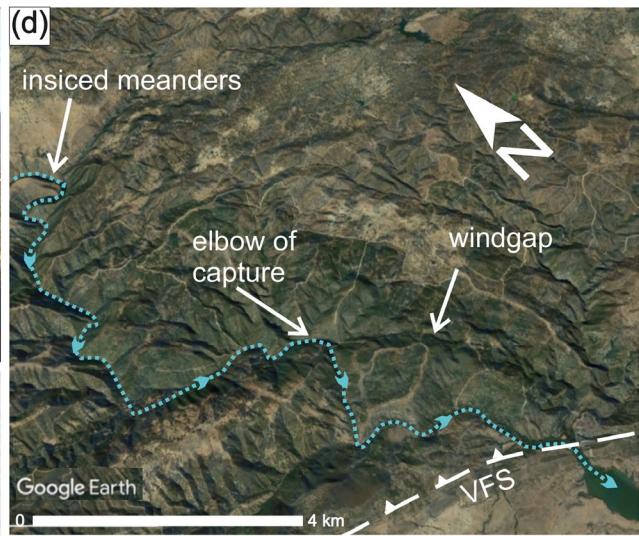
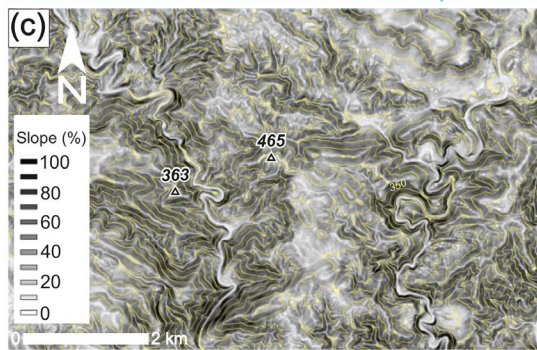
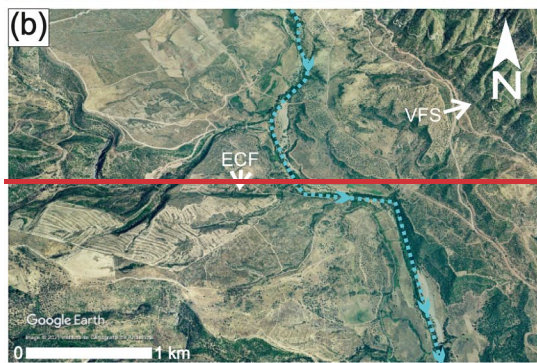
## 4. Signs of relief rejuvenation in Sierra Morena

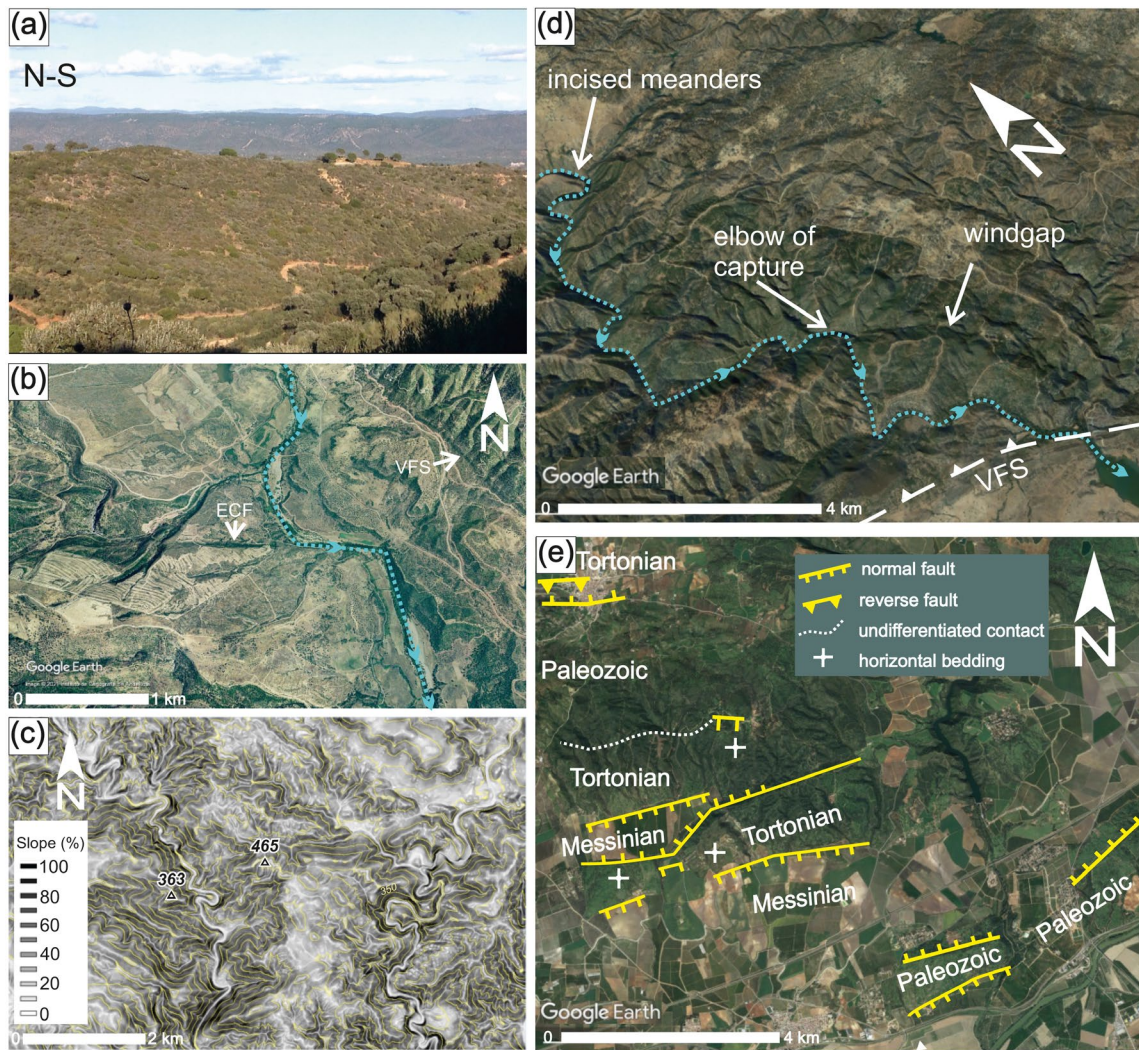
### 4.1 Geomorphological features

300 The relief of the southern half of Sierra Morena is mainly characterised by planar summits alternating with incised valleys (Fig. 1c). Summits are regionally oriented in a sub-horizontal attitude or dipping slightly towards the Guadalquivir valley (e.g., Figs. 2b and 3a), although some exceptions have been found locally. Examples of this anomalous dip have been observed north of Córdoba (Fig. 4), where the upper edge of the SW-NE Sierra Morena escarpment coincides with the Guadiato eastern divide. This NW-ward tilting occurs east of a river elbow testifying stream piracy along the Guadiato stream. As a result, the Guadiato

305 stream bends to NW, thus leaving a roughly N-S oriented wind gap south of the piracy (see also Fig. 11b, d). These summits often represent remnants of an erosional peneplain which has previously been dated to the Paleogene (Rodríguez-Vidal and Díaz del Olmo, 1994). Nevertheless, their location adjacent to the Guadalquivir foreland basin suggests that the relict surface shaping must have been controlled by the local base level of this uplifted marine basin, active during the

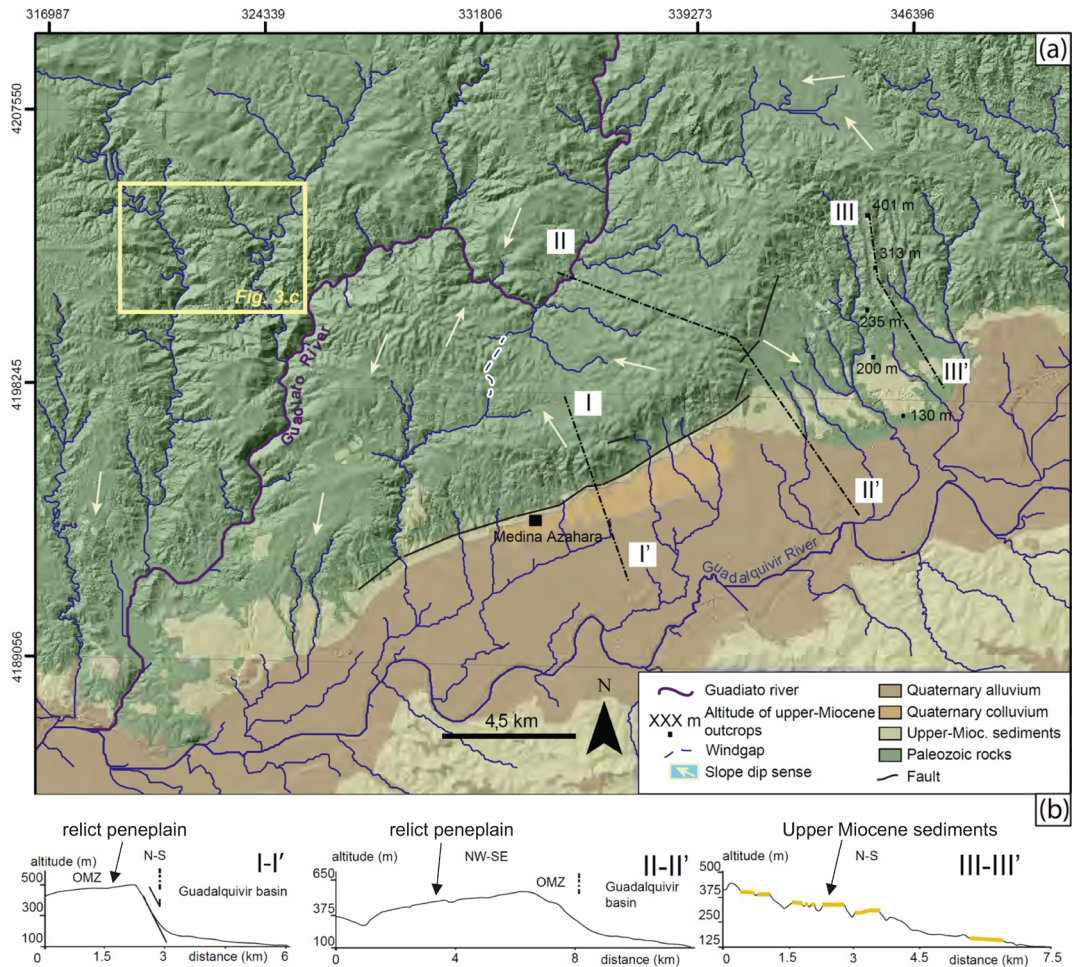
310





315 **Fig. 3. (a) Relict peneplain on top of the Ossa Morena Zone (background), just east of the Viar basin;** the photograph  
 is taken from the South Portuguese Zone (foreground), location on Fig.2a. **(b) Google Earth view of the Viar river**  
**deflection associated with the Embalse del Cala fault, ECF;** image2022©Instituto de Cartografía de Andalucía from  
 2004, before the current dam construction, location on Fig.2a. **(c) Slope and topographic map (equidistance 50 m)**  
**showing incised meanders in S6, location on Fig 4.a, altitude base and reference system as in Fig.1. (d) 2019©Google**  
 320 **Earth oblique view showing a stream elbow testifying to a piracy along the Viar River at its intersection with the Viar**  
**fault system (VFS), location on Fig.2a. (e) Faults related to the NNW-SSE relief segmentation defining horsts and**  
**grabens in the southernmost Sierra Morena (see location on Fig.1b); faults are drawn on a 2019©Google Earth image.**

325 Middle-Upper Miocene (Yanes et al., 2019). Locally, summits are occupied by patches of Neogene shallow marine sediments belonging to the Guadalquivir foreland basin. They unconformably overlie the pre-Mesozoic basement and are uplifted several tens, or even hundreds, of metres above their equivalent in the Guadalquivir River valley (e.g., Figs. 1b and 4a, b). Irrespective of their nature, flat summits often describe a roughly N-S stepped relief segmentation i.e., parallel to the Sierra Morena southern boundary.



330 **Fig.4. (a) Simplified geological/hillshade relief map of the Guadiato River area (S6); see location on Fig.1b. (b) Topographic profiles across the Iberian Massif/Guadalquivir basin boundary. Altitude base and reference system as in Fig.1.**

Additionally, there is significant WSW-ENE segmentation of the Miocene relict surface across the Permian Viar Basin, which partly coincides with the Viar River lower drainage basin (Fig. 2a). This NW-SE depression is open to the Guadalquivir River

335 valley. The average elevation of its low-lying relief is similar to that of the hills shaped on the Miocene and Plio-Quaternary  
rocks of the northern Guadalquivir valley. The Permian Viar Basin is flanked by NW-SE-oriented ranges, markedly incised  
by tributaries of both the right and left banks of the Viar River. The resulting summits have smooth slopes that rarely exceed  
5° towards the SSE (Fig. 2b). In contrast, their boundaries with the Permian Viar Basin are abrupt with averages slopes of 45%  
340 on its eastern boundary, coinciding with the VFS trace, and 20% on its western boundary. When compared on both sides of  
the VFS trace, the erosional relict surface located on the OMZ summits (i.e., the hanging wall) is at a higher topographic level  
(up to 100 m higher) than on the SPZ summits (i.e., VFS footwall, Fig. 2b).

Drainage networks follow a mainly dendritic pattern, paired with local parallel networks. The main streams trend NW-SE in  
their upper reaches —following the Variscan orogenic grain— and bend N-S close to the boundary with the Guadalquivir  
valley (Fig. 1b). This is conditioned by the southward increasing topographic gradient between the Iberian Massif and the  
345 Guadalquivir basin. Secondary stream orientations, however, are often controlled by fractures, particularly in the SPZ, where  
lower order streams of the Viar River follow the trend of SW-NE to W-E fractures (Fig. 2a).

Streams often display features associated with relief rejuvenation such as perched terraces or stream elbows due to both fault-  
related stream deflections (e.g., Fig. 3b) and river capture (e.g., Figs. 3d and 4a). Furthermore, incised meanders are  
significantly abundant in Sierra Morena (e.g., Fig. 3c, d). These meanders run along valleys that can be hundreds of metres  
350 below summits and develop steep slopes (locally up to 70-80 %). Long profiles of both main and secondary streams often  
show typical non-equilibrium, upwards-convex geometry (Fig. 9) and display knickpoints that are not related to lithological  
contrast. Long profile analysis will be carried out below in Section 6.

## 4.2 Geomorphic indices

355 A quantitative analysis (Fig. 5) was performed on six drainage basins belonging to the main right tributary streams of the  
Guadalquivir River (S1 to S6 in Fig. 1b). From west to east, these basins belong to the following rivers: Rivera de Huelva-  
Cala (S1), Viar (S2), Guadalbarcar (S3), Retortillo (S4), Bembézar (S5) and Guadiato (S6). Most of these rivers are particularly  
incised upstream of the Sierra Morena southern mountain front. An exception is the Viar River (S2), where the incision occurs  
upstream of the VFS. Additionally, some second-order tributaries within S2 have also been analysed by means of geomorphic  
360 indices.

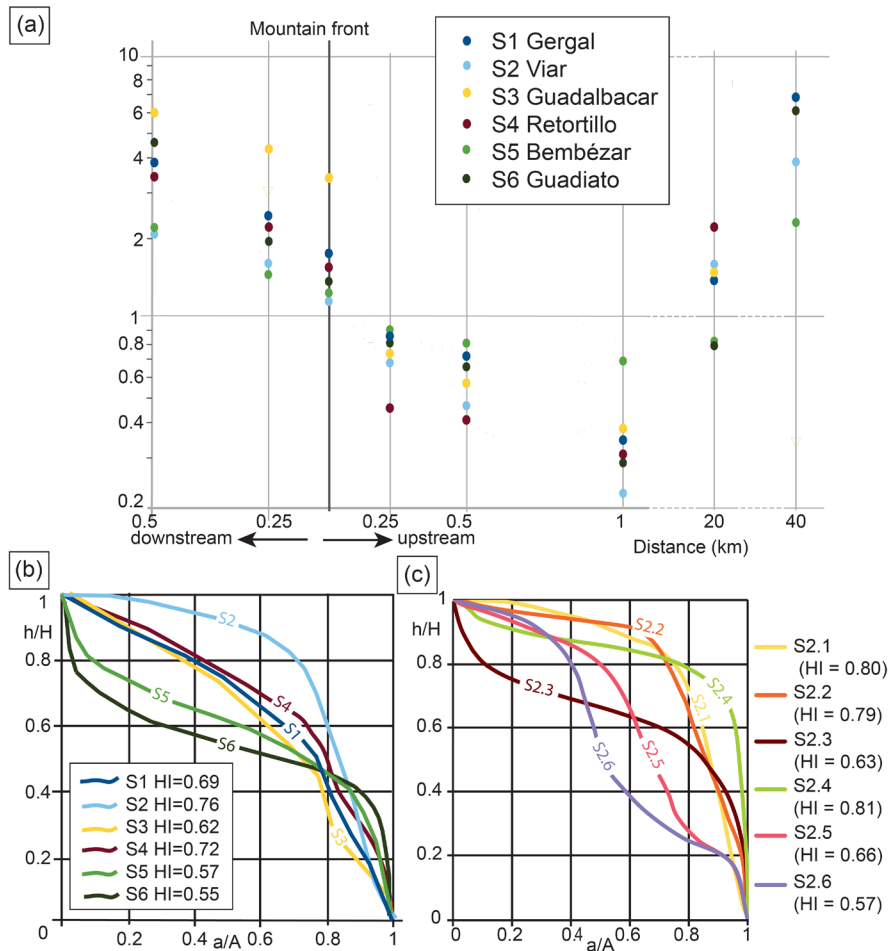
Overall, those mountain fronts related to the southern Sierra Morena escarpment yield low  $S_{mf}$  values, thus corresponding to  
straight mountain fronts (Table 1).

In detail, those values obtained for segments of the WSW-ENE Sierra Morena escarpment vary from 1.15 to 1.3. In the same  
way,  $S_{mf}$  related to the Permian Viar Basin's eastern boundary, i.e., coinciding with the VFS, are between 1.2 and 1.4. Values  
365 obtained for the western boundary are slightly higher, between 1.2 and 2.0.

As describe in Section 4, the Sierra Morena relief mostly consists of roughly flat, sub-horizontal or gently SSE-ward dipping  
summits, separated by incised valleys. These summits often exhibit either remnants of an Upper Miocene, relict peneplain or



Upper Miocene rocks deposited in the Guadalquivir foreland basin. Therefore, these relief elements must have been relatively uplifted from their initial position, i.e., at the Guadalquivir basin level, after the Late Miocene. Given that we have discarded vertical faults and avoided lithological contrasts, straight mountain fronts (close to 1) indicate young, non-eroded escarpments. This indicates that the southern Sierra Morena relief has been rejuvenated by Quaternary activity of the escarpment-related faults.



**Fig.5. Geomorphic indices. (a)  $V_f$  values for the main streams of S1 to S6, upstream and downstream of fault-related mountain fronts (see Fig.7 for fault location). (b) Hypsometric curves and hypsometric integral values, HI, for the same streams as in (a). (c) Hypsometric curves and HI for sub-basins on the right slope of the Viar river valley (located on Figs. 1b and 2a). Altitude base and reference system as in Fig.1.**

375

380  $V_f$  values are less than 1 (Table 1 and Fig. 5a), therefore associated with V-shaped valleys, when measured just upstream from both the Sierra Morena escarpment and the VFS. Conversely, these values are systematically greater not only downstream from the mountain fronts but also in the upper reaches of the analysed streams. In theory, the VF value along a graded long profile tends to increase gradually towards the river mouth. This does not happen in the analysed rivers, where values drop abruptly upstream from the fault-related mountain fronts. Additionally, values are lower in the escarpment sector (quite close  
385 to the river mouth) than in the higher reaches of the same river, thus suggesting that the main river incision responds to the slope disequilibrium located in the fault-related escarpment.

Hypsometric curves for S1 to S6 main streams display dominant upward convex geometries (Fig. 6b), with HI values  $> 0.5$  (Table 1 and Fig. 5b). S5 and S6 curves are slightly S-shaped with relatively high  $h/H$  values in its middle course, also showing the lowest HI values. This may indicate that relief rejuvenation is localised in its lower course.

390 These results suggest, in principle, relief rejuvenation of their watersheds. However, previous works have pointed out that basin's hypsometry can be conditioned, among other factors, by the catchment size (e.g., Hurtrez et al., 1999, and references therein). In this regard, the hypsometry of small catchments may be dominated by hillslope processes, leading to convex upward hypsometric curves. Nevertheless, our selected catchments are large scale catchments (Table 1): S1, S2, S5 and S6 are larger than 1000 km<sup>2</sup> (up to 1875 km<sup>2</sup> in the case of S1), and S3 and S4 are of several hundred km<sup>2</sup>. Thus, we can assume that  
395 the analysed catchments hypsometry is dominated by river processes and, therefore, the obtained convex upward curves and high HI values can be taken as a proxy for recent tectonics.

Regarding the sub-catchments of S2 (Figs. 1b, 2a and 5c), they are small-scale basins (between 18 and 71 km<sup>2</sup>). S.2.4, S.2.5 and S.2.6 are located on the hanging-wall of the VFS, being therefore in the same tectonic situation of the S2 mainstream (i.e., the Viar River, Fig. 5b). Despite being two orders of magnitude smaller, both the geometry of their hypsometric curves and  
400 their HI values are similar to the those of S2 mainstream. This seems to indicate that the hypsometry of the catchments located on the VFS hanging wall is significantly conditioned by the Quaternary reactivation of such fault system.

Similar hypsometric curves geometries and HI values have been obtained for the right slope tributaries of the Viar River (S2.1, S2.2 and S2.3, Figs. 1b and 5c), indicating that the SW boundary of the Permian Viar Basin has also undergone relief rejuvenation.

405

410

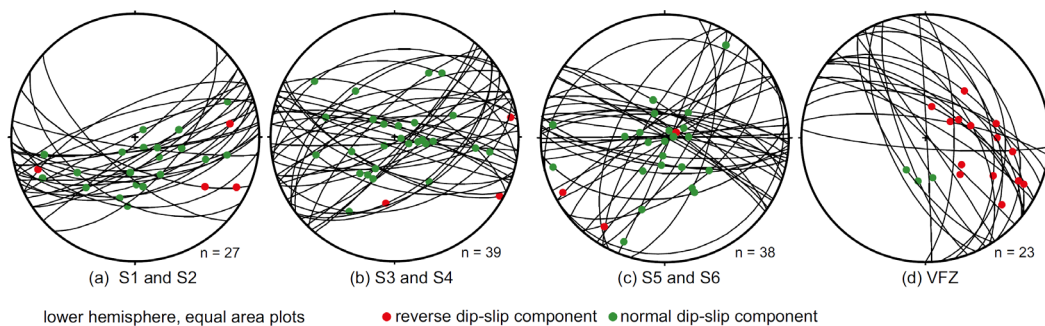
**Table 1. Geomorphic indices and catchment size (S) for the six main drainages basins (S1 to S6)**

	S1	S2	S3	S4	S5	S6
$S_{mf}$	1,32	1,25	1,18	1,21	1,15	1,2
$V_f$	0,82	0,79	0,68	0,43	0,88	0,85
HI	0,69	0,76	0,62	0,72	0,57	0,55
S (km <sup>2</sup> )	1871	1248	238	385	1179	1498

### 5 Structures related to relief segmentation and rejuvenation

As described in previous sections, the topographic distribution of Sierra Morena is regionally defined by a NNW-SSE segmentation that is primarily localised in the Sierra Morena southern slope break, but that also extends northwards, often conditioning the orientation of the secondary stream networks (e.g., Fig. 2a). Thus, this segmentation is defined not only by the topographic step at the southern limit of Sierra Morena, but also by the tilting and displacement, to the north, of both the Miocene erosional paleo-surface and Miocene marine deposits (e.g., Fig. 2b and 4b, d).

We have found that this NNW-SSE segmentation is spatially related to faults that trend from SW-NE to WNW-ESE, the former being the best represented (Fig. 6). Most of them exhibit steep surfaces dipping with either N or S component. Their slickensides indicate slip senses that vary from dominant normal dip slip to dominant right-lateral slip, with the oblique, right-lateral normal faults being well represented. Although the normal slip component is dominant, reverse component also occurs.



**Fig. 6. Stereoplots of faults related to relief rejuvenation. (a), (b) and (c) faults associated with NNW-SSE relief segmentation. (d) Fault surfaces measured in the VFS. Plots have been made with Faultkin 8 by Allmendinger (2019, [www.geo.cornell.edu/geology/faculty/RWA/programs/faultkin.html](http://www.geo.cornell.edu/geology/faculty/RWA/programs/faultkin.html)).**

Some of these faults involving Paleozoic rocks seem to have formed by reactivation of previous structures. For example, in igneous rock outcrops of both the SPZ and the Permian Viar Basin, these faults are evenly distributed with a spacing of metric order, thus pointing to the reactivation of previous joints. In the same way, slickensides indicating normal to dextral faults have been observed along the WSW-ENE Embalse del Cala fault (Figs. 2a, 3c), a Variscan, left-lateral structure located west  
435 of the Permian Viar Basin (García-Navarro and Fernández, 2004).

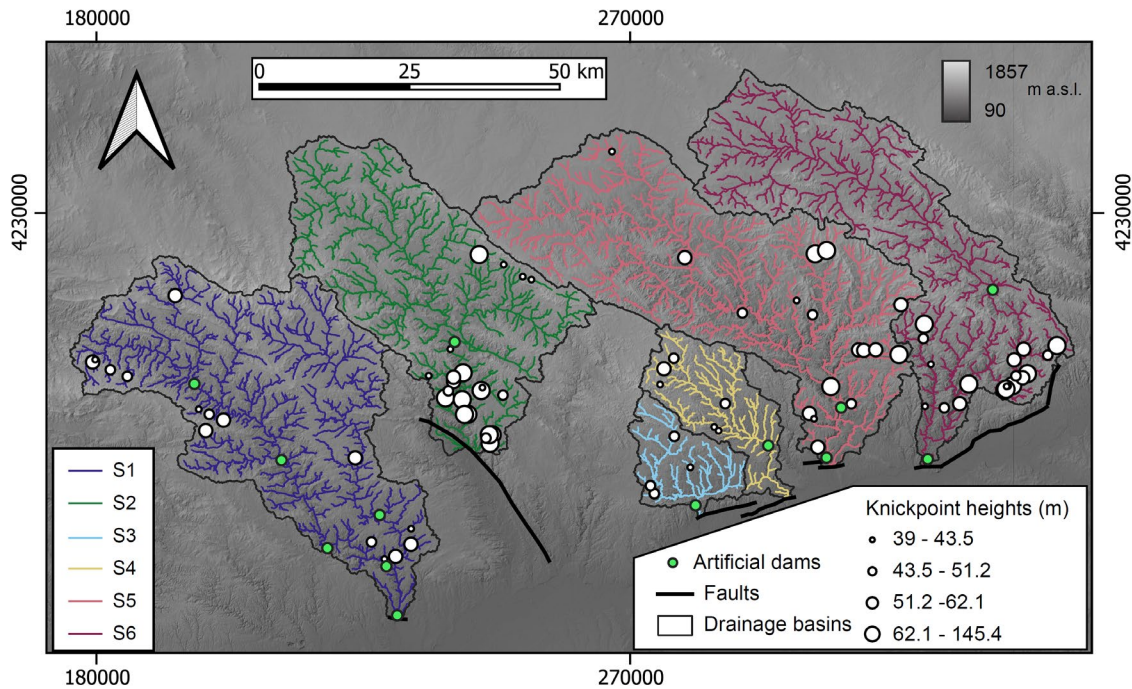
As mentioned above, this fault system is particularly developed in the Sierra Morena escarpment, defining its southern mountain front. The presence of both relict surface remnants and shallow water Miocene rocks along the top of the escarpment enables a minimum vertical throw of the Paleozoic basement to be established. This vertical throw seems to have been greater in the east of our study area (up to 480 m north of Córdoba, in the south of S6; Fig 4b, c and d), gradually decreasing toward  
440 the west ( $\approx$  50 m west of the Permian Viar Basin, in the south of S1; Fig. 2a). In the eastern sector, the vertical throw is clearly exhibited by the abrupt W-E to SW-NE escarpment located to the NW of Córdoba. At its foot, escarpment-derived colluvium of debris-facies can be observed, both pre- and post-dating the Medina Azahara archaeological site (Fig. 4a), which was abandoned and vandalised soon after 1036 A.D., (López-Cuervo, 1983). In the northernmost archaeological site, the most recent colluvium (ca. 2 m thick) seals part of the ancient buildings and incorporates scarce fragments of material from Medina  
445 Azahara buildings, such as ceramic tiles and wall bricks.

In addition to this regional NNW-SSE relief segmentation, a significant WSW-ENE relief segmentation also occurs across the Permian Viar Basin (Fig. 2), i.e., roughly parallel to the overall Sierra Morena escarpment trace. In the NE limit of the Permian Viar Basin, this segmentation is markedly localised along the VFS which consists of mainly NW-SE trending faults. They present moderate to steep NE-ward dips and their slickensides indicate reverse left-lateral slip (Fig. 6d).

In contrast to the NE boundary of the Permian Viar Basin, relief rejuvenation in its SW boundary does not seem to be conditioned by NW-SE-oriented faults, but rather is significantly distributed in diverse structures. Here, the SPZ rocks are unconformably overlain by gently NE-ward, Permian rocks (SW limb of the Viar synform), and signs of relief rejuvenation seem to be mostly related to the WSW-ENE fault system. The different relief rejuvenation modes observed to the SW and NE of the Permian Viar Basin explain that, although  $HI$  yield similar values for both boundaries,  $S_{mf}$  values are higher in the SW  
450 (i.e., the SPZ/Viar basin boundary). Here, differential uplift does not seem to be accommodated by a discrete structure such as the VFS, but rather mainly accommodated by distributed structures of limited extent.

## 6 Knickpoint pattern analysis

The geomorphological and structural data set up in previous sections suggest that the relief rejuvenation and segmentation observed in our studied area is related to two main fault systems that operated coupled with the regional flexural uplift of the  
460 forebulge area. The first one consists mainly of WSW-ENE-oriented faults, highly localised along the similarly oriented southern Sierra Morena mountain front. The second one is the NW-SE-oriented VFS, which limited the Permian Viar Basin to the NE (Fig. 1b and Fig. 2a).



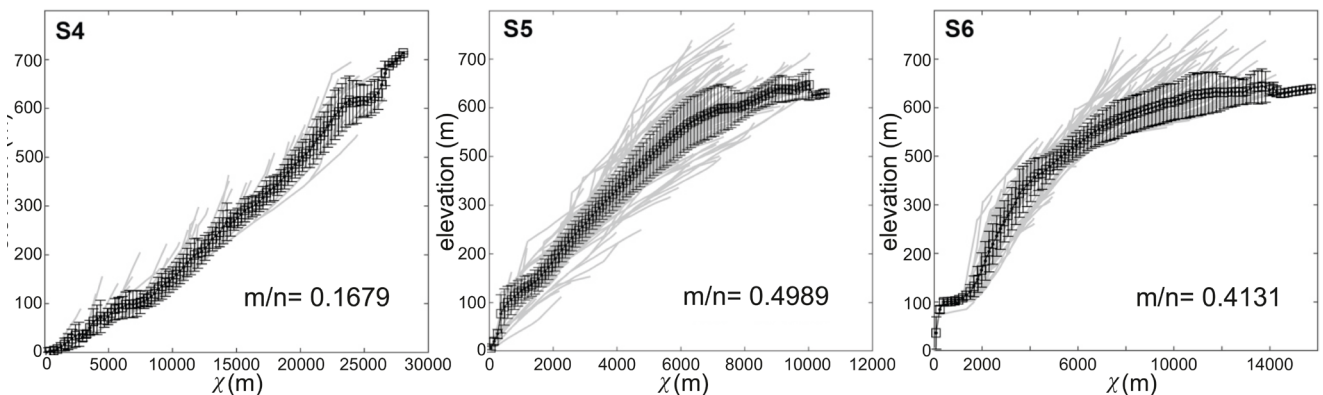
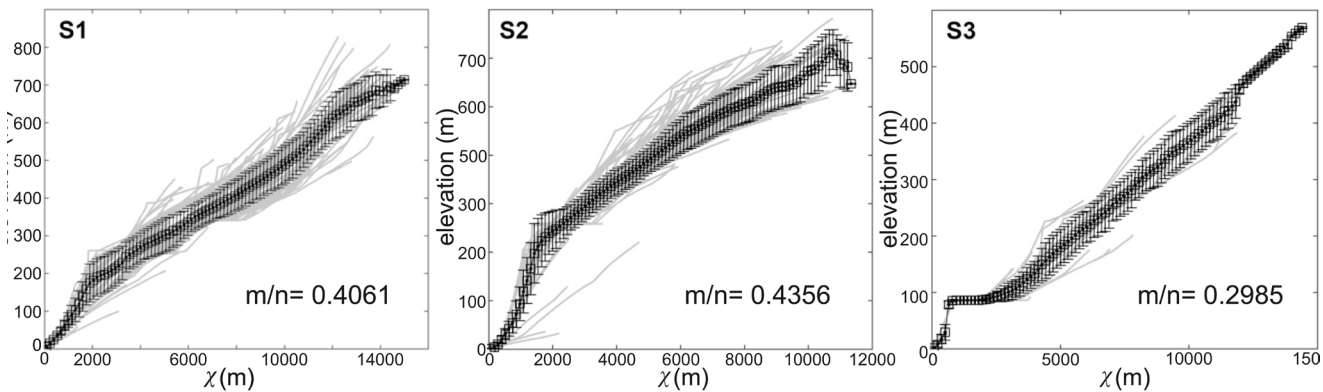
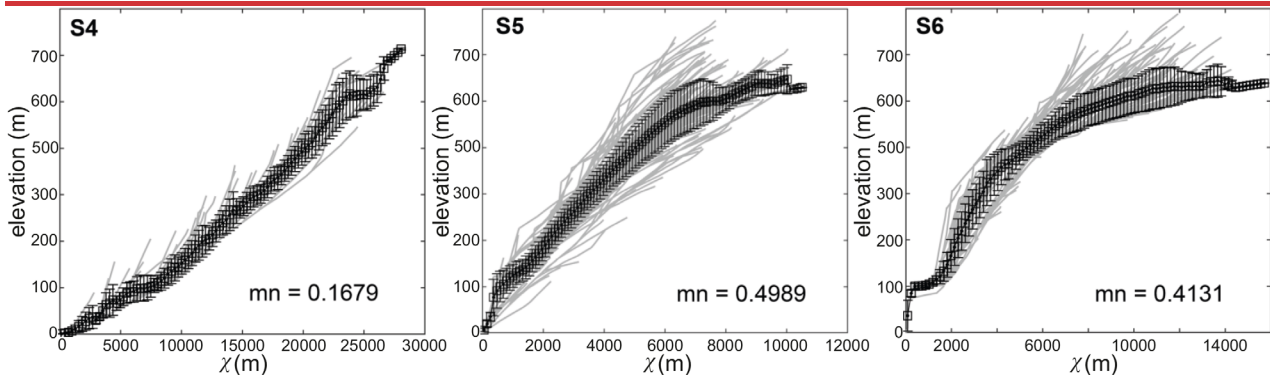
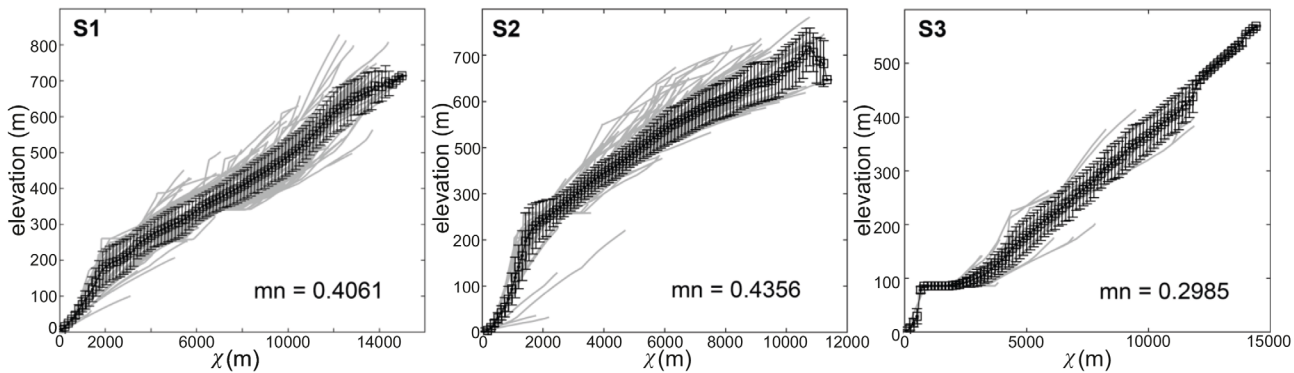
465 **Fig.7. Stream networks upstream of fault-related mountain fronts. Knickpoints sized by their height as well as artificial**  
**dams are also reported. Altitude base and reference system as in Fig.1.**

All the analysed basins are crossed in their lower reaches by one of these fault-bounded mountain fronts (Fig. 7), either related to the Sierra Morena slope rupture (S1, S3, S4, S5 and S6) or to the VFS (S2). Thus, the drainage network located upstream of faults may have recorded their activity through knickpoint migration.

470 In this regard, the distribution of knickpoints upstream of the fault-related main mountain fronts is analysed in this section and the distribution is compared with that predicted by our knickpoint pattern models (Schwanghart et al., 2021). This analysis will enable the [and](#)-comparison of recent tectonic activity along different sectors of Sierra Morena, as well as enabling the deviation between observed and predicted knickpoints to be explored in terms of divide network re-organisation.

To perform  $\chi$  transformations of longitudinal river profiles, we [first](#) have calculated for each basin the  $m/n$  ratio in Eq. (6) that  
 475 [minimises the variability of elevation values for similar values of  \$\chi\$  \(Fig. 8\).](#) [The obtained values indicate that the larger catchments \(S1, S2, S5, S6\) are consistent with the widely used reference value  \$m/n = 0.45\$ , while the smaller ones \(S3, S4\) show lower values. Since all considered catchments are similar concerning their fluvial erosion characteristics and in order to compare  \$\chi\$  -values and thus the locations of knickpoints across catchments, a reference value  \$m/n = 0.45\$  was used to all the catchments.](#) †

480



**Fig. 8.  $\chi$ -profiles for basins S1 to S6 with the lowest chi disorder, intended as the variability of elevation values for similar values of  $\chi$ . The related ~~with~~-m/n values are reported.**

485 Figure 9 shows the position on both mainstream and tributary longitudinal profiles for basins S1 to S6. Horizontal coordinates are displayed in both regular distance (left side) and  $\chi$  space (right side). Coordinates 0,0 correspond to the intersection between the main stream and the fault-related mountain front. Artificial dams and tributary inlets into reservoirs are also projected along profiles. Finally, covariance estimates ( $\rho$ ) for knickpoint patterns on a spatial covariate ( $\chi$  transformed distance from the outlet) are reported with and without artificial dams.

490 The longitudinal profiles of main streams, except for S4, are partially conditioned by the presence of dams, with this being of particular note in S1, which exhibits five dams distributed over 100 km. Despite these dam-related interruptions, the S3 and S4 longitudinal profiles seem to display a slightly concave-up shape, whereas those corresponding to S2 and S6 show a conspicuous convex-up geometry.

The knickpoint distribution along profiles presents certain differences from one drainage basin to another. In S2, S5 and S6, 495 most of the knickpoints are related to the middle and lower values of both  $x$  (Fig. 9c, i, k) and  $\chi$  (Figs. 8d, j and l). Conversely, knickpoints are evenly distributed along S1 plots (Fig. 9a, b). Finally, the scarce knickpoints of S3 and S4 are located in middle and high values of the horizontal coordinates (Fig. 9e, f, g, h).

The  $\chi$  space profiles offer a better perspective for discussing knickpoint pattern dependence. Indeed, the covariance estimate (both with and without artificial dams) highlights how the majority of the higher knickpoints are in the lower part of S1, S2, 500 S5 and S6, whereas in the upper part, several minor knickpoints form secondary peaks in the covariance trend. Knickpoints are particularly clustered in S2, where most of them are distributed in a very narrow strip corresponding to the lower part of the drainage basin, with  $\chi$  values around 1,000–1,500–700 m, and elevations around 200 m above the outlet point. Furthermore, S6 knickpoints are clearly grouped in the lower part of the basin, though to a lesser extent than in S2, with  $\chi$  values between 2,000–3,500 m and elevations between 200 m and 400 above the outlet point.

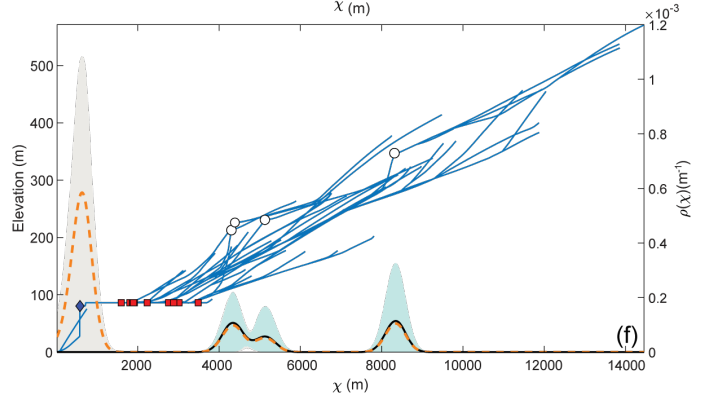
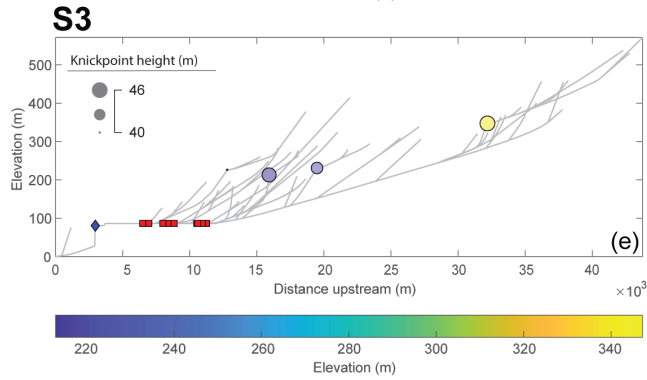
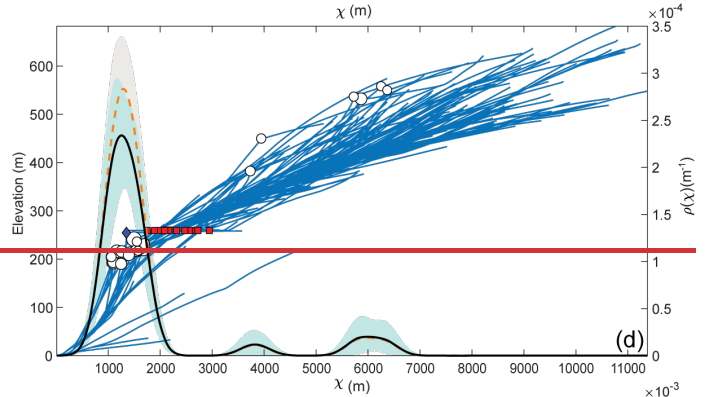
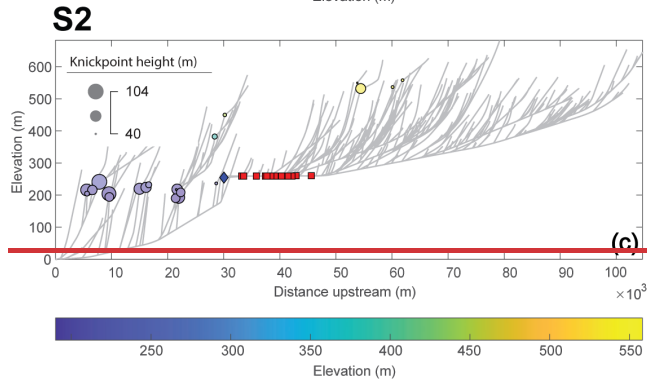
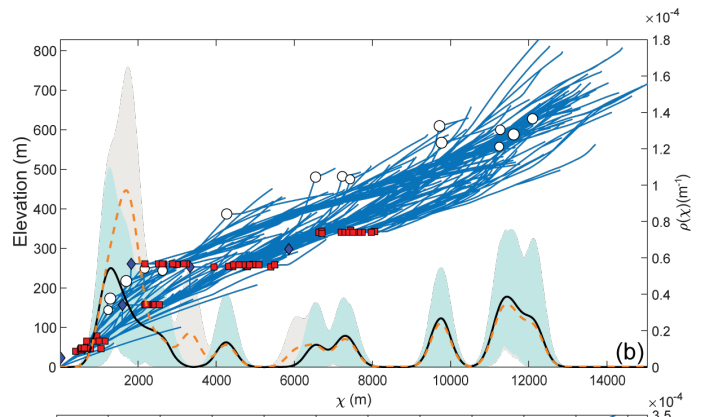
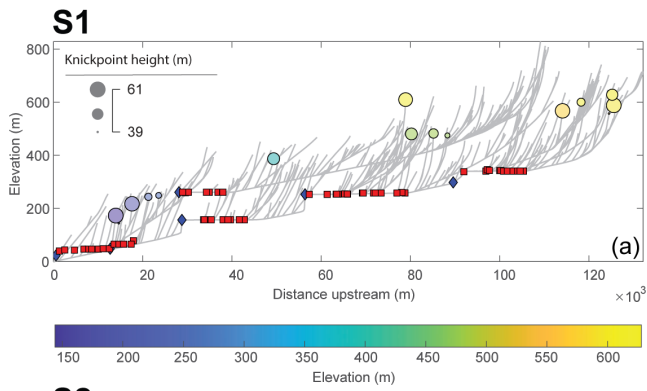
505 From the comparison of the covariance computed with and without artificial dams in the dataset, it can be observed that the dependence of the knickpoint pattern is variably affected by the occurrence of artificial dams. In this regard, such dependence is strong in S1, S3, S5 and S6, as can be inferred by the shifting of the intensity peaks when covariate values obtained with and without dams are compared. However, the dependence of the knickpoint pattern to artificial dams does not seem to be significant in S2, only raising slightly the intensity peak of the plot. S4 is not at all biased, since no knickpoints were 510 automatically extracted that coincide with the only artificial dam of this drainage basin. In this regard, the plano-altimetric configuration of some dams cannot exclude the pre-existence of a knickpoint favouring the dam location. Examples of this are the artificial dam of S2 or the highest one of S6, whereby the location on the  $\chi$ -plot fits with the values range of knickpoints.

As can be observed in Fig. 9, only S2 and, to some extent, S6 networks show a strong consistency between the probability of having knickpoints and the actual location of a robust number of knickpoints. Both S3 and S4 show peaks of density values 515 above the average. However, there is considerable uncertainty surrounding these results because of the few knickpoints located

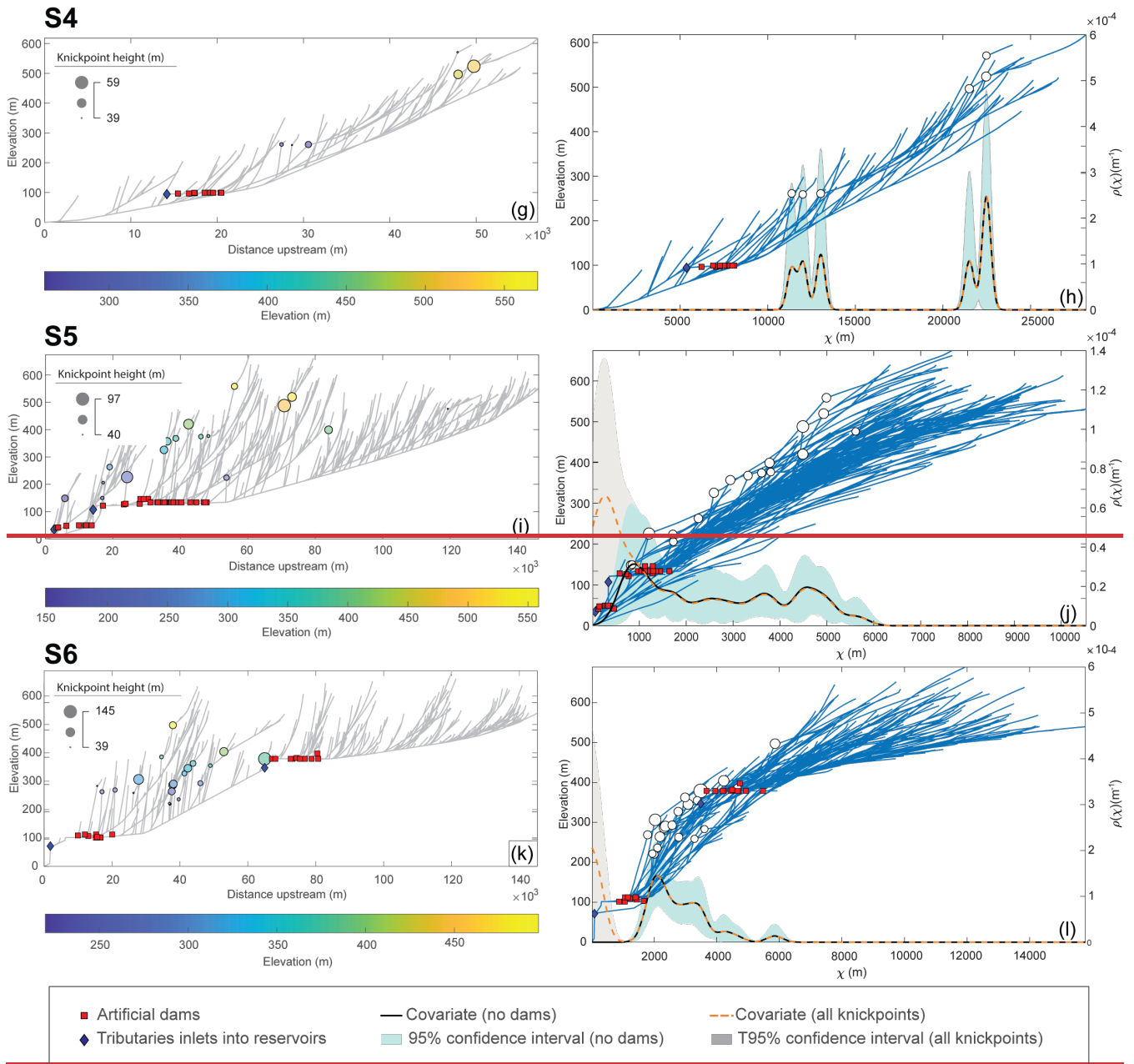
in the peaks of  $\chi$  value. Instead, the intensity peaks of S1 and S5 are highly distributed and lower than the average. In detail, S1 shows values slightly higher both in the lower and in the upper parts of the basins, while S5 is affected by greater uncertainty, not showing any outstanding density peak of expected knickpoints. The notable difference between the actual and expected knickpoint patterns, especially in S1 and S5, will be analysed in the discussion section.

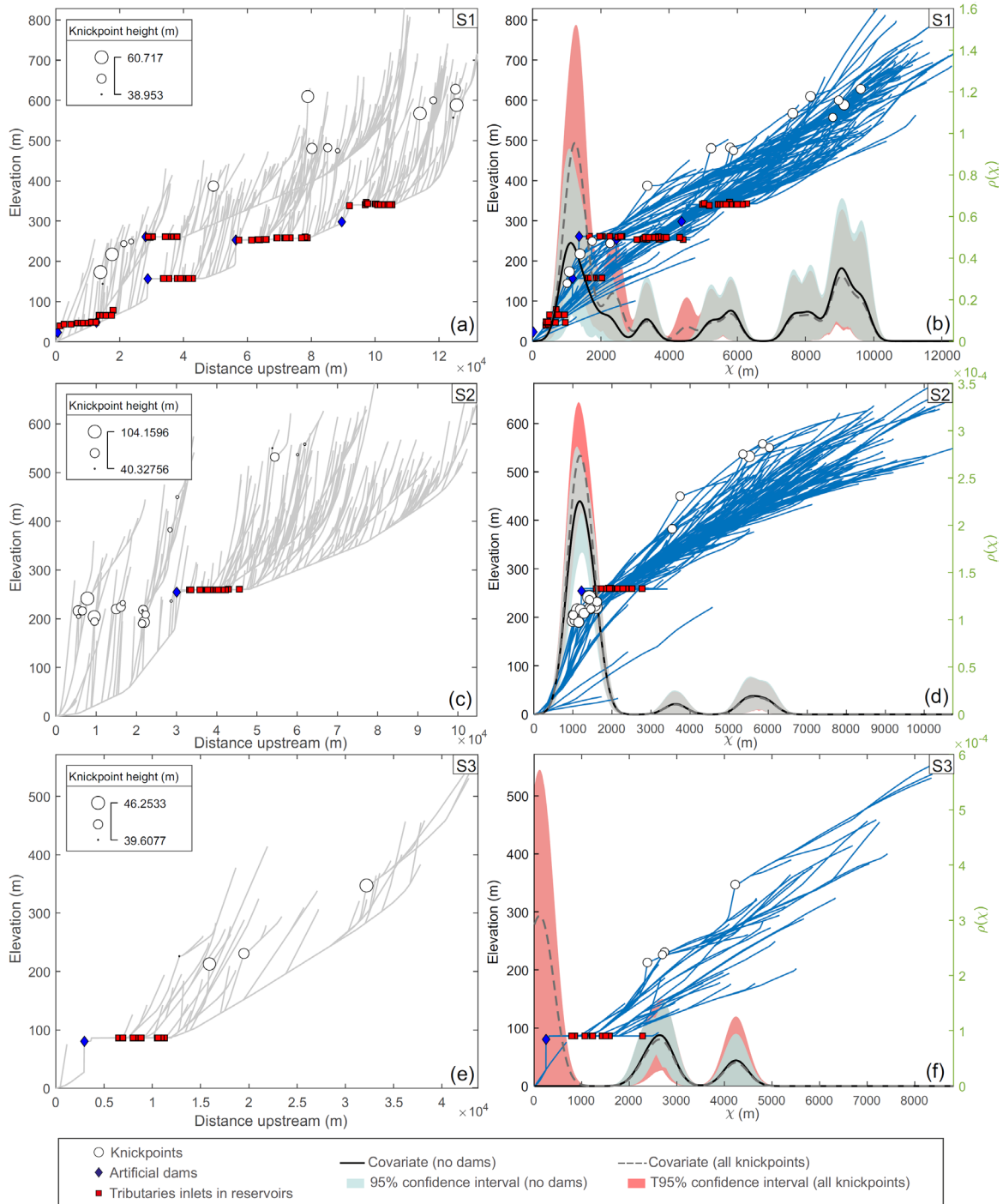
520

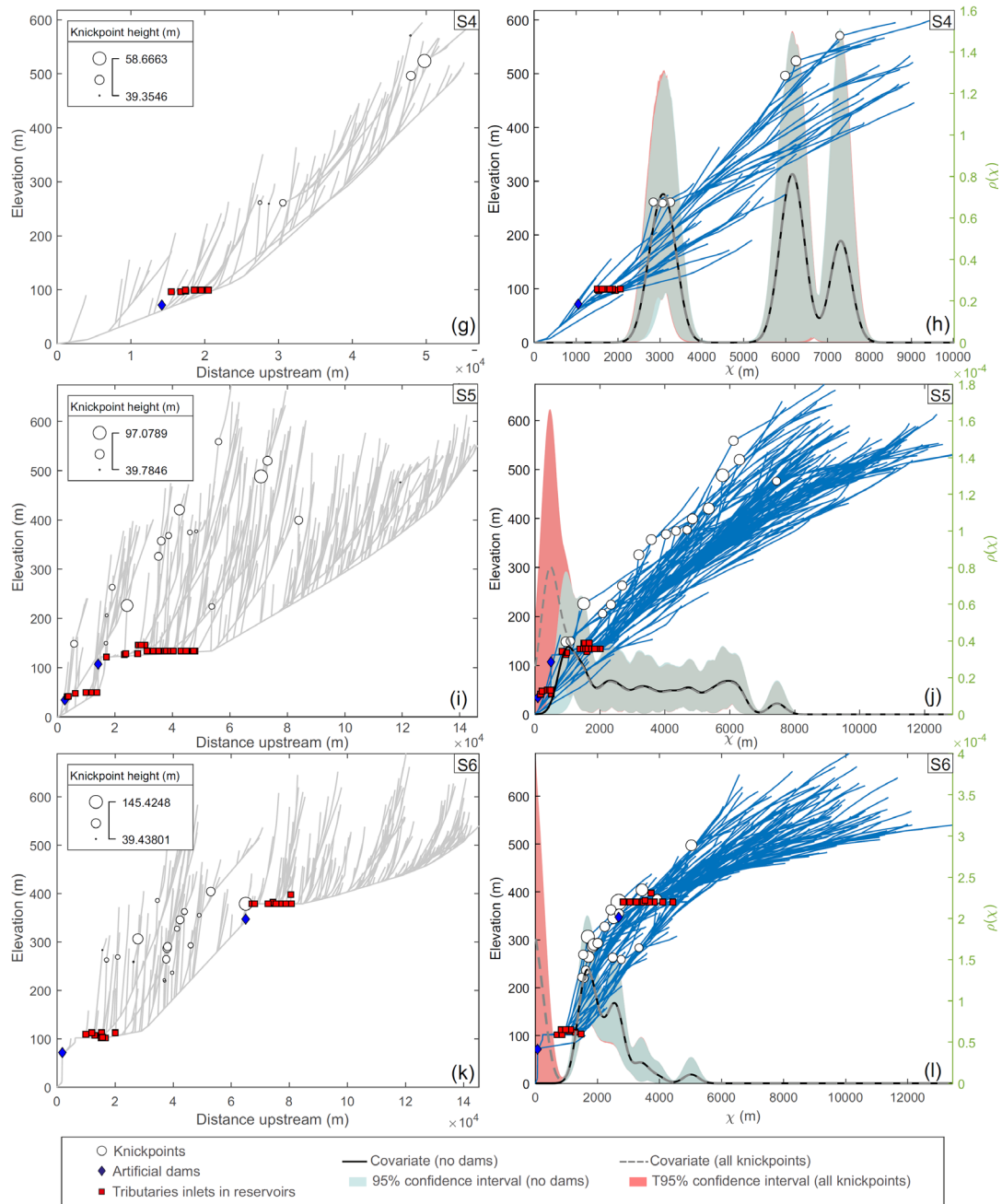




- Artificial dams
- ◆ Tributaries inlets into reservoirs
- Covariate (no dams)
- 95% confidence interval (no dams)
- - - Covariate (all knickpoints)
- T95% confidence interval (all knickpoints)







525 **Fig. 9. Knickpoint distribution along S1-S6 stream networks. (a), (c), (e), (g), (i) and (k) river longitudinal profiles; (b), (d), (f), (h), (j), and (l)  $\chi$  transformed longitudinal profiles. The covariance estimates for knickpoints, calculated on the  $\chi$  transformed distance from the outlet (spatial covariate) with and without dams, indicate the probability of having knickpoints along the transformed profile. Knickpoints, ~~coloured by elevation and~~ sized by height, artificial dams, and tributary inlets into the reservoirs are projected on profiles.**

**7.1 Geomorphic response to tectonic uplift**

As described in section 4, the Pliocene and onwards relief rejuvenation in our study area may be inferred from both the interpretation of observed geomorphological features and the results yielded by the applied quantitative methods. In addition, our structural results suggest that the distribution of such rejuvenated relief is greatly controlled by the position and orientation of two main fault systems with Quaternary activity.

The activity of overall WSW-ENE faults has strongly contributed to the roughly NNW-SSE relief segmentation of the foreland, which is particularly localised along the topographic escarpment separating Sierra Morena from the Guadalquivir foreland basin. The existence of both relict surface remnants and Neogene outcrops along the top of the escarpment has allowed us to compare the relative uplift accommodated along this escarpment and its variations from east to west.

In this regard, the foreland escarpment north of Córdoba is particularly high and exhibits a higher topographic gradient in comparison to other sectors located to the west. In this eastern sector, faulting also appears to be related to the recent NW-ward tilting of the relict peneplain surface in the Guadiato River lower course (S6), assumed to be originally dipping towards the foreland basin. This uplift-related tilting explains the sharp stream elbow testifying to the piracy of the Guadiato River whereby the abandoned lowermost course has remained as a wind gap.

As stated previously, well developed, debris-facies colluvium is deposited at the foot of this escarpment post-dating the ancient city of Medina Azahara. Thus, this debris accumulation points to the instability of the escarpment (e.g., Forman et al., 1991) over the last 1,000 years. The thickness of such colluvium is similar to that reported for recent, even active, faults (e.g., Koukouvelas et al. 2005). This recent activity is in line with some historical earthquakes recorded in Córdoba at the end of the 10th century ([www.iagpds.ugr.es](http://www.iagpds.ugr.es): Andalusian Institute of Geophysics and Seismic Disaster Prevention Centre). In this regard, a recent archaeological and seismological study on Medina Azahara describes oriented damages, compatible with NW-SE-oriented ground motion, which could be reasonably related to the destruction of the city at the beginning of the 11th century (Rodríguez Pascua et al., 2021).

Towards the west, the N-S segmentation of southern Sierra Morena is still observed; however, the topographic escarpment becomes lower and less sharp. In contrast, relief rejuvenation seems to be particularly localised along the NW-SE oriented Permian Viar Basin limits, particularly along the VFS, where the fault trace coincides with the abrupt escarpment separating the Permian Viar Basin and the OMZ.

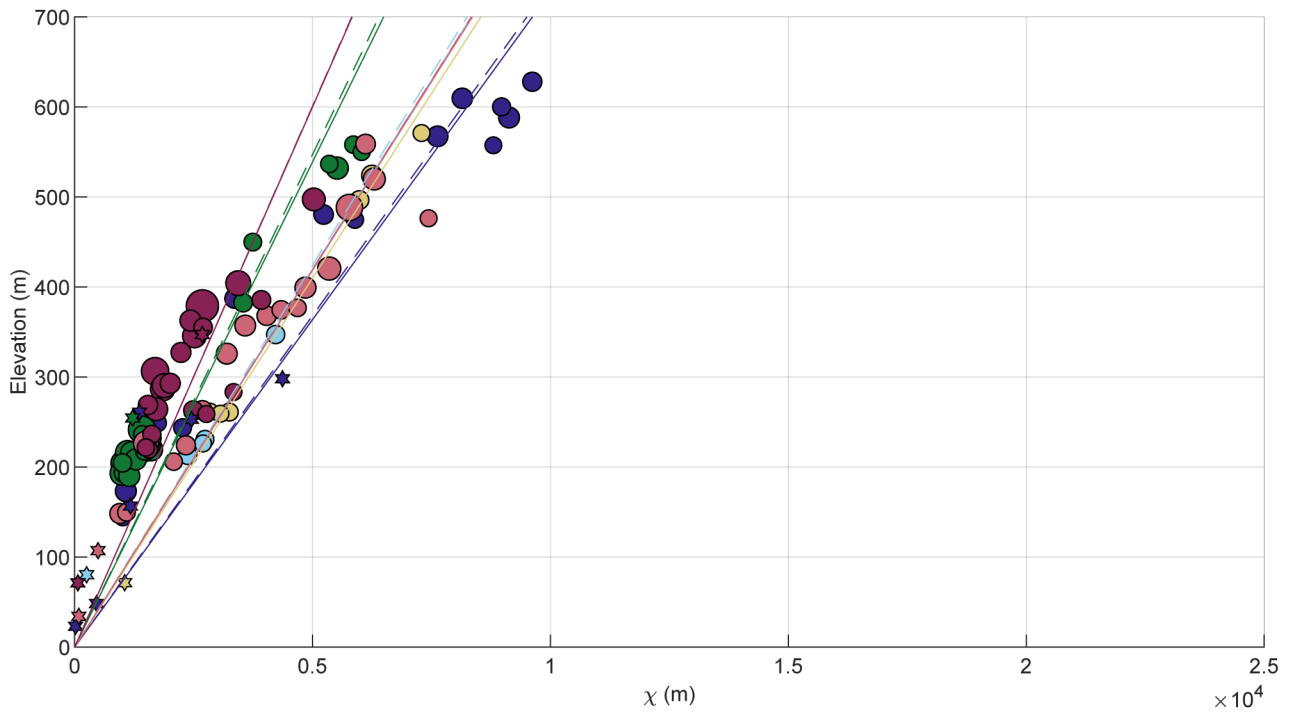
This outstanding WSW-ENE topographic segmentation across the Permian Viar Basin is also characterised by the topographic discontinuity of the erosional relict surface, which is located at higher altitude on the NE side of the basin (the hanging wall of the VFS; Fig. 2b). Given the Miocene age attributed to such relict surface, this discontinuity is in agreement with a Pliocene or Quaternary activity of the VFS, which uplifted the OMZ. Furthermore, the distribution of the Neogene sediments along the SE limit of the Permian Viar Basin, together with the lack of said sediments in the basin, point to the same conclusion. Thus, whereas the floor of the Viar drainage basin is currently at the same altitude as the northernmost Neogene outcrops of the

Guadalquivir basin, these sediments do not extend into the Viar drainage basin. This may indicate that the uplift of the forebulge region (i.e. Sierra Morena), likely accommodated in part by the WSW-ENE fault system, was prior to the Viar River drainage basin downthrow, suggesting that the VFS reactivation is relatively young within the relief rejuvenation event in Sierra Morena.

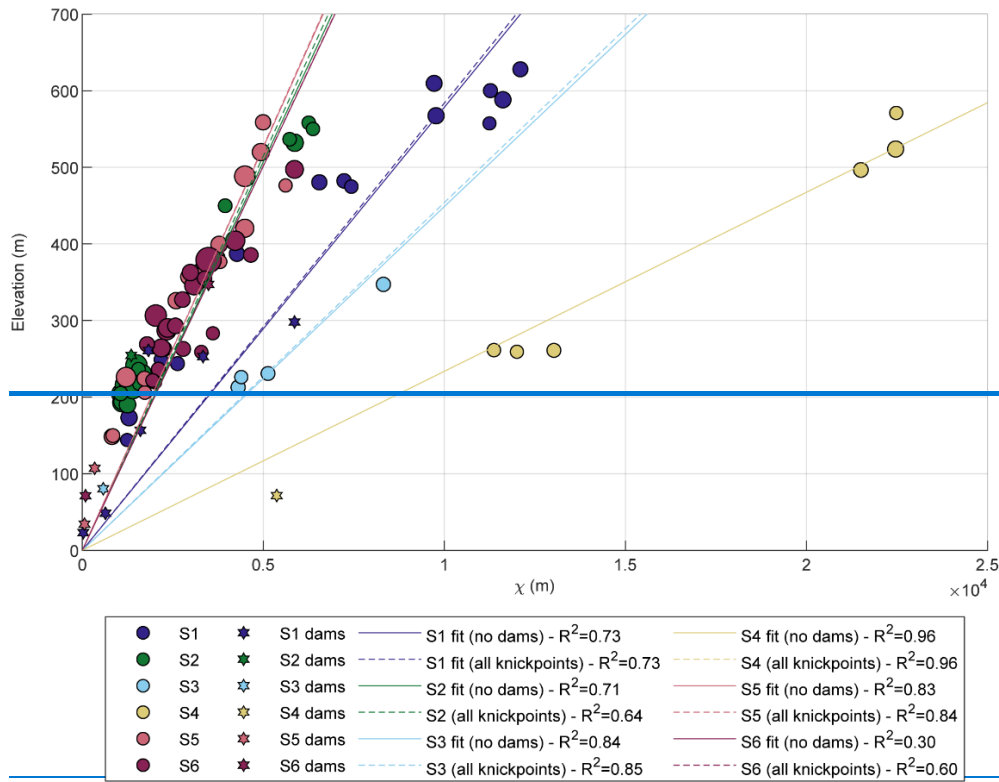
Thus, although there is qualitative and quantitative evidence of recent tectonics in the whole study area, the activity seems to be particularly manifest in sectors where basins S2 and S6 developed. The same conclusion is suggested by the comparison between the  $\chi$ -plots obtained for basins S1 to S6. In this regard, S2 and, to some extent, S6 show a greater consistency between the non-parametric dependence model and the current positions of knickpoints. In these basins, most of the knickpoints cluster in low  $\chi$ -values, thus pointing to the recent propagation of the perturbation from its source, i.e., faults located in the escarpments of Sierra Morena (S6) and the VFS (S2).

In Fig. 10, the elevation of knickpoints and dams has been plotted in  $\chi$  horizontal coordinates, and the best linear fits and related regression coefficients have been calculated for basins S1 to S6. Since there are not strong lithological contrast in the study area, we can assume that the slope of plots can be interpreted as a proxy of the tectonic activity. Thus, ~~S2-S6~~ and ~~S6-S2~~ show the greatest uplift, ~~together with S5~~ The others show a moderately high slope that could be also related to tectonic activity. ~~The S1 plot shows a moderately high slope that could also be related to recent tectonic activity.~~ It is worth noting that the ~~S2-S6~~ and ~~S6-S2~~ plot slopes would become steeper if those knickpoints in higher  $\chi$ -values, disconnected from the main clusters, were removed. In addition, the quality of their regression coefficients would increase given that the scarce knickpoints in the upper part of the plot hamper an optimal linear interpolation. In any case, the slopes of plots for S2, ~~S5~~ and S6 suggest that these basins are located in sectors with the greatest and, ~~at least for S2 and S6,~~ most recent uplift within our study area. ~~Although S5~~ Moreover only S2, S5, and S6 and, to a lesser extent, S1 show significant plot slopes, potentially related to recent uplift, only S2 and S6 are characterised by certain consistency between observed and predicted knickpoints. Conversely, ~~S1 and S5~~ the others deviated from the obtained model. The reason for this deviation could lie in processes related to divide network reorganisation, which have been proven to alter the upstream propagation of knickpoints (Schwanghart and Scherler, 2020). In this regard, the DAI metric sized by divide order (Fig. 11) reveals significant drainage reorganisation and enables the divide migration direction to be inferred.

Such reorganisation alters drainage areas and discharge, and thus impacts on knickpoint celerities, which in return will result in more scattered knickpoint locations (Schwanghart and Scherler, 2020). Specifically, S1 is affected by a strong internal divide migration towards the east, suggesting that the western reach of S1 may have captured the eastern reach.



● S1	★ S1 dams	— S1 fit (no dams) - $R^2=0.75$	— S4 fit (no dams) - $R^2=0.98$
● S2	★ S2 dams	- - S1 fit (all knickpoints) - $R^2=0.74$	- - S4 (all knickpoints) - $R^2=0.98$
● S3	★ S3 dams	— S2 fit (no dams) - $R^2=0.71$	— S5 fit (no dams) - $R^2=0.79$
● S4	★ S4 dams	- - S2 (all knickpoints) - $R^2=0.63$	- - S5 (all knickpoints) - $R^2=0.81$
● S5	★ S5 dams	— S3 fit (no dams) - $R^2=0.98$	— S6 fit (no dams) - $R^2=0.02$
● S6	★ S6 dams	- - S3 (all knickpoints) - $R^2=0.86$	- - S6 (all knickpoints) - $R^2=0.46$



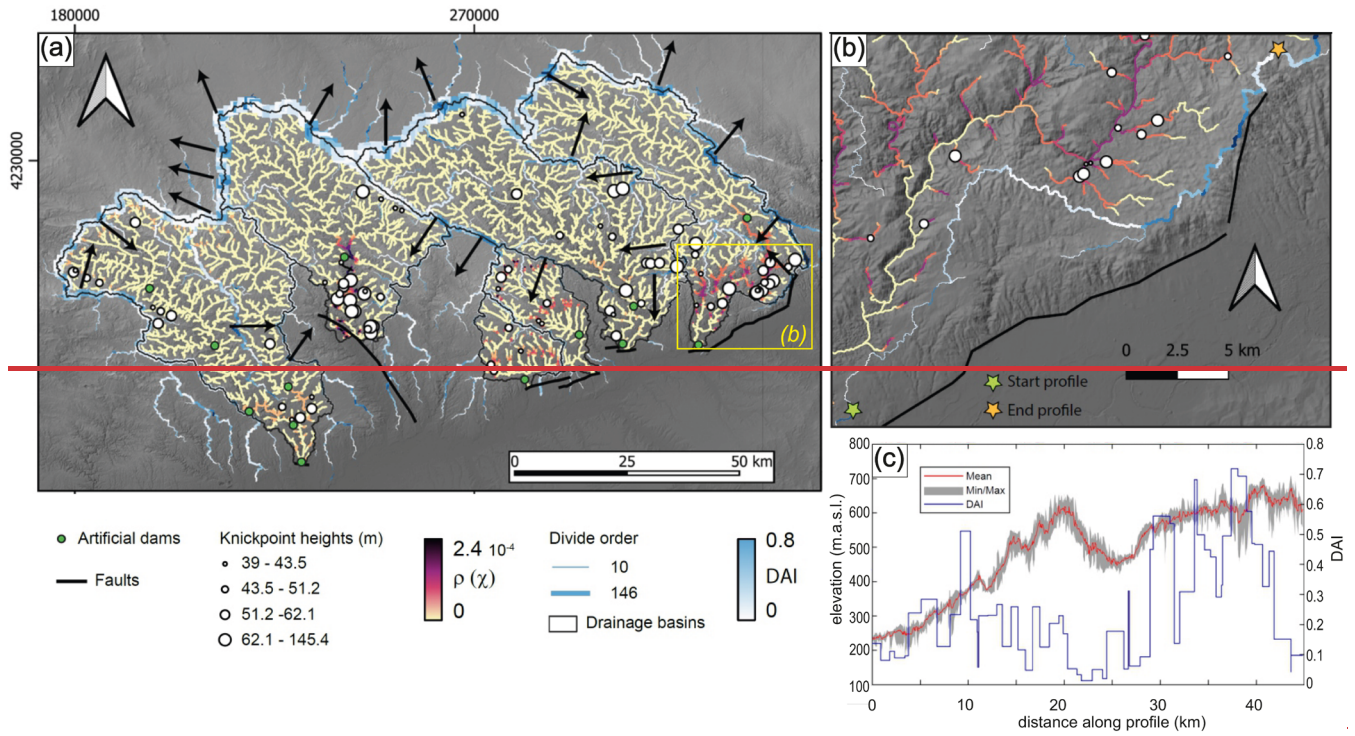
**Fig. 10.  $\chi$  versus elevation plot of knickpoint and artificial dams related to each drainage basin. The linear fits and the associated regression coefficients with and without artificial dams are reported. According to Eq. (6), for  $n=1$ , the slope of  $\chi$ -profiles is directly proportional to the uplift rate (U) and inversely proportional to the erodibility (K). Since there are no strong lithological contrasts in the study area, the slope of plots can be interpreted as a proxy of the tectonic activity.**

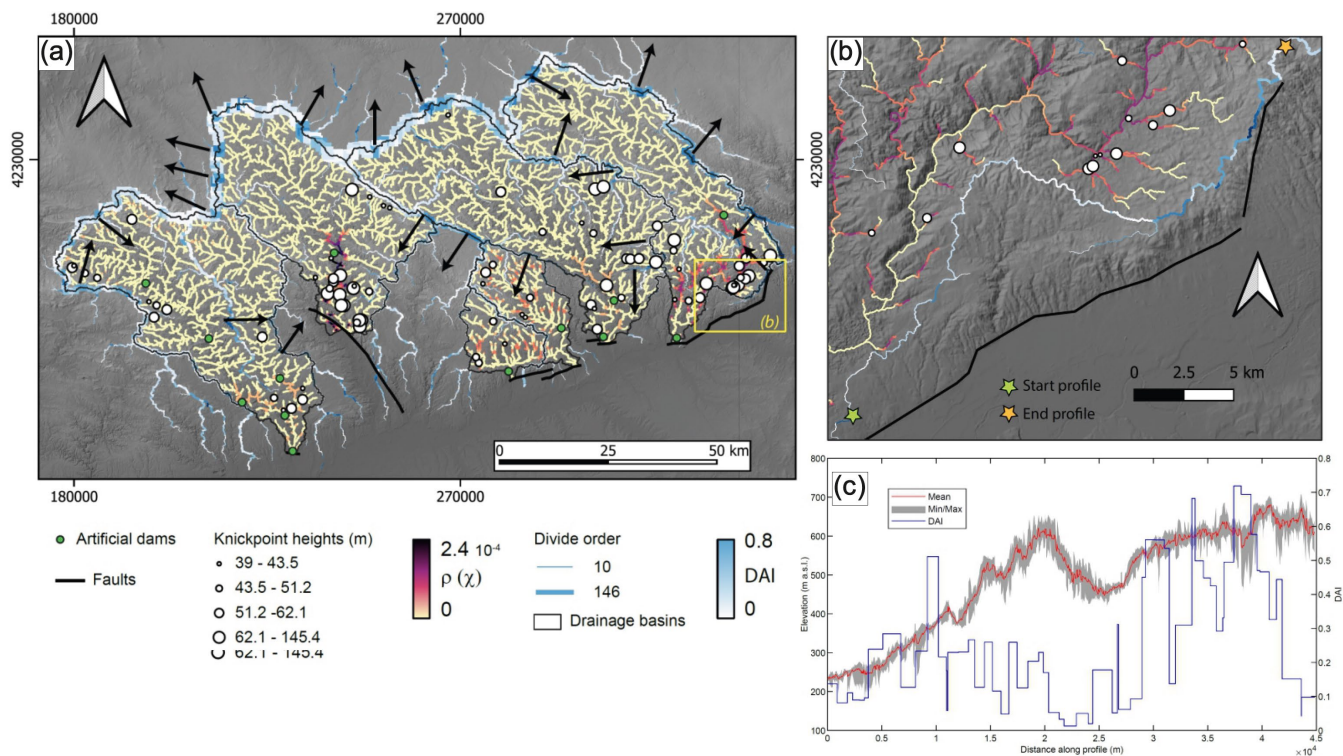
Moreover, the main basin divide is also moving, decreasing the basin drainage area, likely affecting the locations of the upper reach knickpoints. The SE sector of the divide between S2 and S5 is moving SW-ward, thus decreasing the drainage area of the former, whereas the NW sector of the S2 divide is moving towards NW, increasing its drainage area. The large uncertainties around the single knickpoints occurring higher up in the drainage basin can be explained by such drainage reorganisation. Nevertheless, S2 is experiencing a great stability that explains the strong consistency between the observed and expected knickpoint patterns in the lower part of the basin. S5 divides seem to be migrating SW-wards, gaining area from S2 and S4, and losing area in the lower part of the drainage basin along the S5-S6 main divide and, also, along minor divides. Nevertheless, in the upper part of the same divide, NE-ward migration is occurring, which, combined with the aforementioned SW-ward migration of the lower basin, gives rise to a clockwise rotation of the divide. Such movement will likely cause S6 to lose area



at the higher part of the basin. This divide reorganisation could account for the difference in consistency among the model and the current knickpoint locations in S5 and S6. Specifically, the uncertainty and lower-than-average intensity peaks shown by

610





**Fig. 11. (a) Observed and expected spatial patterns of knickpoints in the selected Sierra Morena basins. The intensity ( $\rho$ ) values are computed on the knickpoint dataset without artificial dams. The drainage divide network asymmetry (DAI) sized by order is reported and the inferred movement is indicated by the black arrows. The elevation base is the 12 m resolution TanDEM-X DEM (Wessel, 2016). The reference system is WGS84 UTM 30N. (b) Detail of Fig.11a with ( $\rho$ ) and DAI values of S6 in the sector of the capture elbow. (c) Along divide swath profile with a width of 1000 m and corresponding DAI values (note the presence of wind gaps along the SE divide).**

615  $\chi$  space profile of S5 (Fig. 9j) can be explained by such drainage reorganisation. In S6 both the stream piracy and the wind gap formation (Fig. 4a and Fig. 11 b,c) seem to be associated with the scattered knickpoint distribution. They developed linked to the uplift and NW-ward tilting of the SE-most sector of S6. This process triggered the NW-ward migration of the SE divide, with the highest DAI values (Fig. 11b, c), which is still ongoing in the sector where the fault-related escarpment changes orientation from WSW-ENE to SSW to NNE. Although the divide reorganization provides an explanation for the scattered

625 distribution of knickpoints, the reason may be also related to the strain partitioning expected in a region widely affected by previous mechanical discontinuities. Indeed, knickpoints originated by the same perturbation (e.g., a single event in a single fault) must cluster on a  $\chi$  space profile. This situation happens in S2 where deformation is very localized-localised by a discrete fault system (VFS), here interpreted as a reactivated major Variscan tectonic contact. However, in the rest of our study area, the recent deformation does not seem to be accommodated by major faults, but highly partitioned into distributed, variably

630 oriented faults. Thus, several perturbations originated in different faults could be superimposed along the stream network and, therefore, knickpoints would not cluster. In this regard, this geomorphic tool could be useful to test localization versus distribution of the strain.

## 7.2 Matching the geomorphic results with the tectonic scenario

635 The Sierra Morena is characterised by significant mechanical discontinuities achieved during its complex tectonic evolution. These discontinuities are predominantly defined by both NW-SE-oriented Variscan structures, and mainly WSW-ENE faults related to the Alpine orogenic cycle, which eventually gave rise to the Betic chain building during Neogene times. Such orientations coincide with those found for faults with Quaternary activity, thus suggesting that the observed relief rejuvenation pattern is strongly determined by the reactivation of previous structures that are accommodating the current strain partitioning.

640 The overall WSW-ENE trend of faults associated with the Sierra Morena southern escarpment, and in general to its NNW-SSE relief segmentation, is in agreement with those expected to accommodate extension by flexural bending in the Betics forebulge, i.e., parallel to this topographic high. In this regard, normal faults with a dominant dip-slip component, therefore producing extension roughly orthogonal to the forebulge trend, are frequent. Nevertheless, the overall cartographic WSW-ENE trend of the escarpment is at smaller scale defined by faults whose orientations range from SW-NE to WNW-ESE. This

645 suggests that not only newly formed, forebulge-related faults may be involved, but also those Variscan structures with an orientation that favoured their reactivation. Examples of Variscan WNW-ESE structures recently reactivated as normal faults have been previously described in the Sierra Albarrana area (SA in Fig. 1c; Herraiz et al., 1996). Additionally, reactivated late Variscan SW-NE to WSW-ENE fractures seem to be also present. Examples include joints exhibiting striated surfaces in late Paleozoic igneous rocks, or the Embalse del Cala Fault (Figs. 2a, 3c), a left-lateral fault (García-Navarro and Fernández, 2004)

650 interpreted in this work as a reactivated normal dextral fault.

Although most of these structures have a normal slip component, many of them are roughly vertical or even steeply dipping reverse faults, suggesting that current vertical extrusion is significant in the forebulge zone. This may indicate that compression is tightening this flexural relief, also explaining the reactivation of the Variscan NW-SE-oriented VFS as a shortening structure. This tightening is consistent with previous seismotectonic analysis in Sierra Morena, showing that focal mechanisms of reverse

655 faults are deeper than those of normal faults (Herraiz et al, 1996). This vertical distribution of the stress matches with tangential longitudinal strain by lithospheric buckling. In this respect, previous numerical models of the paired Betic foreland basin-forebulge (i.e., Guadalquivir basin/Sierra Morena) evolution have settled that the current altitude of Sierra Morena cannot be explained only by lithospheric flexure of the South Iberian basement. Therefore, these models invoke compressional tectonic forces to enhance the Sierra Morena uplift by lithospheric folding (García-Castellanos et al., 2002; Cloetingh et al, 2002). This

660 is in line with the amplitude/width ratio of Sierra Morena, which is significantly higher than other forebulge examples (e.g., Niviere et al., 2013).

This compressional setting has been often contextualised within the overall NW-SE-oriented compression of the Iberian Peninsula, linked to the convergence between the Eurasian and the African plates (e.g., Herraiz et al., 2000 and references therein). Nevertheless, this NW-SE-oriented compression hardly explains either the dextral component that is frequently exhibited by the WSW-ENE fault system or the reverse slip accommodated by the VFS, which is oriented parallel to this compression direction. In this respect, our results seem to be more compatible with forebulge compression due to the intraplate propagation of the Betics transpressional deformation front. Indeed, the Neogene to recent dextral transpressional kinematics recorded in segments of the western Betics is consistent with a N99°E–N109°E trending horizontal velocity vector (Díaz-Azpiroz et al., 2014, Barcos et al., 2015, 2016) attributed to the west-ward migration of the western Gibraltar Arc (Balanyá et al. 2012, Gutscher et al., 2002). This shortening orientation would have reactivated the VFS as a left-lateral reverse fault. Additionally, the dextral transpressional deformation of the forebulge would generate SW-NE-oriented extension. This extension would imprint an overall dextral kinematics on the WSW-ENE to WNW-ESE faults, which would be characterised by a high strain partitioning due to the different orientation of the reactivated structures. Interestingly, fault population analysis techniques applied to sectors nearby our study area have yielded similar SW-NE-oriented extension ( $S_{min}$  trend, Herraiz et al., 2000).

## 8 Summary and conclusions

Our results show that the combination of geomorphological and structural analyses of ancient areas can be a powerful tool not only to explore the roll of reactivated structures on relief rejuvenation, but also to delve into the tectonic setting responsible for such reactivation. This combined analysis can be exported to any long-lived region in order to compare the proposed tectonic setting with the observed geomorphological features. In our case, we have interpreted in tectonic terms the main geomorphological traits of Sierra Morena, a flexural relief (i.e., the forebulge) generated in the Betics foreland due to the load exerted by the orogenic pile.

The analysed drainage network of Sierra Morena shows a wide range of relief rejuvenation signs such as: i) preserved relicts of a Miocene peneplain, shaped at the foreland basin base level and now located several hundred metres above it; this peneplain is at places stepped and/or tilted; ii) incised meanders, fault-related streams deflection and stream piracy; iii) patches of shallow-water marine Miocene deposits (now at different altitudes, up to 400 m a.s.l). These elements, taken together, give rise to a topography of flat lying interfluves, often constituted by either patches of Miocene rocks or remnants of the Miocene peneplain, deeply incised by the drainage network.

The qualitative geomorphological characterisation, together with the use of geomorphic indices, evidence the relationship between mountain fronts and Quaternary activity of both newly formed and re-activated faults. The main faults controlling relief rejuvenation belong to two different groups: the first is mainly composed of WSW-ENE, right-lateral normal faults, responsible for the NNW-SSE relief segmentation of Sierra Morena as well as the abrupt escarpment between this range and

the Guadalquivir foreland basin; the other fault group is localised on the Viar fault system (VFS), previously interpreted as a late-Variscan, left-lateral reverse fault system, and is responsible for WSW-ENE relief segmentation in the western sector of the study area.

Knickpoint pattern modelling, based on  $\chi$ -space and performed on six drainage basins, enables us to define the relationship between the activity of the analysed structures and the current geomorphological features of Sierra Morena in a more precise manner. The main stems of these selected basins are crosscut by fault segments, which are related to either the Sierra Morena southern escarpment or the reactivated VFS. The planimetric and altimetric knickpoints clustering on  $\chi$ -profiles confirms that the faults located in the Sierra Morena southern escarpment have experienced recent, although somehow diachronous, tectonic activity. Our analysis also evidences differences in relative uplift along this escarpment. Moreover, divide migration controls the deviation observed between modelled and observed knickpoints distribution as indicated by the computed values of the divide asymmetry index (DAI).

On the whole, our results deviate from those expected in a typical flexural forebulge. In addition to flexural related deformation, the kinematic features of faults related to the current Sierra Morena relief point to Quaternary, strongly partitioned, transpressional deformation of the Betic foreland. This is compatible with the intraplate propagation of the Betic fold and thrust deformation.

#### **Code and data availability**

Codes rely on TopoToolbox (Schwanghart and Scherler, 2014), which is freely available in <https://topotoolbox.wordpress.com/download>

TanDEM-X data were kindly provided by the German Aerospace Center (DLR) (project ID: DEM\_HYDR3360); <https://tandemx-science.dlr.de>.

The software used for stereoplots is Faultkin (Richard W. Allmendinger © 2020-2022), which is freely available in <https://www.rickallmendinger.net/>

#### **715 Author contribution**

IE led the research and wrote the paper draft. AJB and MD made the quantitative geomorphological analyses. IE, AJB, JLY, JCB and FM participate in the fieldwork for both qualitative geomorphological analysis and structural analysis. All the authors participated in the results interpretation as well as in the text improvement.

#### **Competing interest**

720 The authors declare that no competing interests are present.

## Acknowledgements

We thank the editor, A. Joshua West, and the associate editor, Richard Gloaguen. We also appreciate the thorough review of Stefan Hergarten and Colin P. Stark, whose comments have significantly improved this article. This research is part of projects PGC2018-100914-B-I00, funded by the Ministerio de Ciencia e Innovación (Spanish Government)/ AEI/ 10.13039/501100011033/ ERDF, and UPO-1259543, funded by the Consejería de Economía, Conocimiento, Compañías y Universidad (Andalusian Government)/ ERDF.

## References

Allmendinger, R. W.: Faultkin 8, <https://www.rickallmendinger.net/faultkin>, 2019.

730 Andalusian Institute of Geophysics and Seismic Disaster Prevention Center: <https://iagpds.ugr.es/> (last access: 10/01/2022)

Azañón, J., Perez-Peña, J., Giaconia, F., Booth-Rea, G., Martinez-Martinez, J., and Rodriguez-Peces, M.: Active tectonics in the central and eastern Betic Cordillera through morphotectonic analysis: the case of Sierra Nevada and Sierra Alhamilla, J. Iber. Geol., 38(1), 225-238, [https://doi.org/10.5209/rev\\_JIGE.2012.v38.n1.39214](https://doi.org/10.5209/rev_JIGE.2012.v38.n1.39214), 2012.

735

Balanyá, J. and García-Dueñas, V.: Les directions structurales dans le Domaine d'Alborán de part et d'autre du Détroit de Gibraltar, C. R. Acad. Sci., Serie II, 304(15), 929-933, 1987.

Balanyá, J., Crespo-Blanc, A., Azpiroz, M., Expósito, I., and Luján, M.: Structural trend line pattern and strain partitioning around the Gibraltar Arc accretionary wedge: Insights as to the mode of orogenic arc building, Tectonics, 26(2), TC2005, <https://doi.org/10.1029/2005TC001932>, 2007.

740

Balanyá, J., Crespo-Blanc, A., Diaz-Azpiroz, M., Expósito, I., Torcal, F., Perez-Pena, V., and Booth-Rea, G.: Arc-parallel vs back-arc extension in the Western Gibraltar arc: Is the Gibraltar forearc still active?, Geol. Acta, 10(3), 249-263, <https://doi.org/10.1344/105.000001771>, 2012.

745

Barcos, L., Balanyá, J., Díaz-Azpiroz, M., Expósito, I., and Jiménez-Bonilla, A.: Kinematics of the Torcal Shear Zone: Transpressional tectonics in a salient-recess transition at the northern Gibraltar Arc, Tectonophysics, 663, 62-77, <https://doi.org/10.1016/j.tecto.2015.05.002>, 2015.

750

- Barcos, L., Díaz-Azpiroz, M., Balanyá, J., Expósito, I., Jiménez-Bonilla, A., and Faccenna, C.: Analogue modelling of inclined, brittle-ductile transpression: Testing analytical models through natural shear zones (external Betics), *Tectonophysics*, 682, 169-185, <https://doi.org/10.1016/j.tecto.2016.05.021>, 2016.
- 755 Brum da Silveira, A., Cabral, J., Perea, H., and Ribeiro, A.: Evidence for coupled reverse and normal active faulting in W Iberia: The Vidigueira-Moura and Alqueva faults (SE Portugal), *Tectonophysics*, 474(1), 184-189, <https://doi.org/10.1016/j.tecto.2009.04.013>, 2009.
- Bull, W.B. and McFadden, L.D.: Tectonic Geomorphology North and South of the Garlock Fault, California, in:  
760 *Geomorphology in Arid Regions: A Proceedings Volume of the 8th Annual Geomorphology Symposium*, edited by: Doehring, D.O., State University of New York, Binghamton, 115-138, <https://doi.org/10.4324/9780429299230>, 1977.
- Bull, W.B.: Geomorphic Tectonic Classes of the South Front of the San Gabriel Mountains, US Geological Survey Contract Report 14-08-001-G-394, Office of Earthquakes, Volcanoes and Engineering, Menlo Park, 1978.
- 765 Butler R. W. H., Holdsworth R. E., and Lloyd G. E.: The role of basement reactivation during continental deformation, *J. Geol., Soc. London*, 154, 69–71, <https://doi.org/10.1144/gsjgs.154.1.0069>, 1997.
- Cloetingh, S., Burov, E., Beekman, F., Andeweg, B., Andriessen, P. A. M., García-Castellanos, D., de Vicente, G., and Vegas,  
770 R.: Lithospheric folding in Iberia, *Tectonics*, 21(5), 1041, <https://doi.org/10.1029/2001TC901031>, 2002.
- Crespo-Blanc, A. and Orozco, M.: The Southern Iberian Shear Zone: a major boundary in the Hercynian folded belt, *Tectonophysics*, 148, 221-227, [https://doi.org/10.1016/0040-1951\(88\)90130-8](https://doi.org/10.1016/0040-1951(88)90130-8), 1988.
- 775 De Vicente, G., Vegas, R., Muñoz Martín, A., Silva, P.G., Andriessen, P., Cloetingh, S., González Casado, J.M., VanWees, J.D., Álvarez, J., Carbó, A., and Olaiz, A.: Cenozoic thick-skinned deformation and topography evolution of the Spanish Central System. *Glob. Planet. Change*, 58, 335–381, <https://doi.org/10.1016/j.gloplacha.2006.11.042>, 2007.
- DeCelles, P. G.: Foreland basin systems revisited variations in response to tectonic settings, in: *Tectonics of sedimentary*  
780 *basins: Recent advances*, edited by: Busby, C. and Azor, A., 405-426, Blackwell Publishing Ltd., Chichester, UK, <https://doi.org/10.1002/9781444347166.ch20>, 2012.
- Dercourt, J., Zonenshain, L.P., Ricou, L. E., Kazmin, V.G., Le Pichon, X., Knipper, A.L. Grandjacquet, C., Sbertshikov, I.M., Geyssant, J., Lepvrier, C., Pechersky, D.H., Boulin, J., Sibuet, J. C., Savostin, L.A., Sorokhtin, O., Westphal, M., Bazhenov,

- 785 M.L., Lauer, J.P., and Biju-Duval, B.: Geological evolution of the Tethys Belt from the Atlantic to the Pamirs since the Lias, *Tectonophysics*, 123, 241-315, [https://doi.org/10.1016/0040-1951\(86\)90199-X](https://doi.org/10.1016/0040-1951(86)90199-X), 1986.
- Díaz-Azpiroz, M., Fernández, C.: Kinematic analysis of the southern Iberian shear zone and tectonic evolution of the Acebuches metabasites (SW Variscan Iberian Massif), *Tectonics*, 24, TC3010, <https://doi.org/10.1029/2004TC001682>, 2005.
- 790
- Díaz-Azpiroz, M., Barcos, L., Balanyá, J.C., Fernández, C., Expósito, I., Czeck, D.M.: Applying a general triclinic transpression model to highly partitioned brittle-ductile shear zones: a case study from the Torcal de Antequera massif, External Betics, southern Spain. *J. Struct. Geol.*, 68, 316–336, <https://doi.org/10.1016/j.jsg.2014.05.010>, 2014.
- 795 Expósito, I., Jiménez-Bonilla A., Moral F. y Balanyá J.C.: Deformación reciente y control tectónico del relieve de la Cuenca del Guadalquivir entre las Béticas Centrales y Occidentales, *Geo-Temas*, 16, 93-96, 2016.
- Expósito, I., Jiménez-Bonilla A., Balanyá J.C, Moral F. and Rodríguez-Rodríguez, M.: Recent tectonic activity and relief rejuvenation in the Betics foreland (Sierra Morena of Córdoba), *Geo-Temas*, 18, 54-57, 2020.
- 800
- Expósito, I., Simancas J. F., González-Lodeiro F., Azor A., and Martínez Poyatos D. J: La estructura de la mitad septentrional de la Zona de Ossa-Morena: deformación en el bloque inferior de un cabalgamiento cortical de evolución compleja, *Rev. Soc. Geol. Esp.*, 15, 3-14, 2002.
- 805 Faccenna C., Piromallo, C., Crespo-Blanc, A., Jolivet, L., and Rosetti, F.: Lateral slab deformation and the origin of the western Mediterranean arcs, *Tectonics*, 23, TC1012, <https://doi.org/10.1029/2002TC001488>, 2004.
- Fernández, M., Berástegui, X, Puig C., García-Castellanos, D., Jurado, M. J., Torne, M., and Banks, C.: Geophysical and geological constraints on the evolution of the Guadalquivir foreland basin, Spain, *Geol. Soc. London, Spec. Publ.*, 134, 29 -
- 810 48, <https://doi.org/10.1144/GSL.SP.1998.134.01.03>, 1998.
- Fernández-Lozano, J., Sokoutis, D., Willingshofer, E., Dombrádi, E., Martín, A. M., de Vicente, G. & Cloetingh, S.: Integrated gravity and topography analysis in analog models: intraplate deformation in Iberia, *Tectonics*, 31, TC6005, <http://doi.org/10.1029/2012TC003122>, 2012.
- 815
- Flemings, P. B, and Jordan, T. E.: Stratigraphic modeling of foreland basins: Interpreting thrust deformation and lithosphere rheology, *Geology*, 18(5), 430–434, [https://doi.org/10.1130/0091-7613\(1990\)018%3C0430:SMOFBI%3E2.3.CO;2](https://doi.org/10.1130/0091-7613(1990)018%3C0430:SMOFBI%3E2.3.CO;2), 1990.



- Fonseca, P. and Ribeiro, A.: Tectonics of the Beja-Acebuches ophiolite: A major suture in the Iberian Variscan fold belt, *Geol. Rundsch.*, 82,440-447, <http://doi.org/10.1007/BF00212408>, 1993.
- 820
- Forman, S., Nelson, A., and McCalpin, J.: Thermoluminescence dating of fault-scarp-derived colluvium-deciphering the timing of paleoearthquakes on the weber segment of the wasatch fault zone, North Central Utah, *J. Geophys. Res. -Sol. Ea.*, 96(B1), 595– 605, <https://doi.org/10.1029/90JB02081>, 1991.
- 825
- García, R., Jiménez Bonilla, A., Díaz-Azpiroz, M., Pérez Valera, F., Balanyá, J.C., and Expósito, I.: Kinematics and geomorphology of the Algodonales-Badolatosa shear zone at the fold-and-thrust belt of the western Subbetics, *Geo-Temas*, 16, 547-550, 2016.
- 830
- García-Castellanos, D., Fernández, M., and Torne, M.: Modeling the evolution of the Guadalquivir foreland basin (southern Spain), *Tectonics*, 21(3), 1018, <https://doi.org/10.1029/2001TC001339>, 2002.
- García-Navarro, E. and Sierra, S.: Evolución tectónica del borde oriental de la cuenca del Viar (ZSP), *Rev. Soc. Geol. España*, 11, 223-232, 1998.
- 835
- García-Navarro, E. and Fernández, C.: Final stages of the Variscan orogeny at the southern Iberian massif: Lateral extrusion and rotation of continental blocks, *Tectonics*, 23(6), TC6001, <https://doi.org/10.1029/2004TC001646>, 2004.
- Giaconia, F.; Booth-Rea, G.; Martínez-Martínez, J.M; Azañón, J.M; Pérez-Peña, J.V.; Pérez-Romero, J., and Villegas, I.: Geomorphic evidence of active tectonics in the Sierra Alhambra (eastern Betics, SE Spain), *Geomorphology*, 145-146, 90-106, <https://doi.org/10.1016/j.geomorph.2011.12.043>, 2012.
- 840
- González-Delgado, J.A., Civis-Llovera, J., Dabrio, C.J., Goy, J.L., Ledesma, S., Pais, J., Sierro, F.J., and Zazo, C.: Cuenca del Guadalquivir, in: *Geología de España*, edited by: Vera, J.A., Sociedad Geológica de España - Instituto Geológico y Minero de España, Madrid, 543-550, 2004.
- 845
- Gutscher, M.A., Malod, J., Rehault, J.P., Contrucci, I., Klingelhoefer, F., Mendes-Victor, L., Spakman, W.: Evidence for active subduction beneath Gibraltar, *Geology*, 30, 1071-1074, [https://doi.org/10.1130/0091-7613\(2002\)030<1071:EFASBG>2.0.CO;2](https://doi.org/10.1130/0091-7613(2002)030<1071:EFASBG>2.0.CO;2), 2002.
- 850
- Hack, J.T. Studies of longitudinal stream profiles in Virginia and Maryland. USGS Professional Paper, 295, 45–97, 1957

Hergarten, S., Robl, J., and Stüwe, K.: Tectonic geomorphology at small catchment sizes – extensions of the stream-power approach and the  $\chi$  method, *Earth Surf. Dynam.*, 4, 1–9, <https://doi.org/10.5194/esurf-4-1-2016>, 2016.

855

Herraiz, M., de Vicente, G., Lindo, R., and Sanchez-Cabanero, J. G.: Seismotectonics of the Sierra Albarrana area (southern Spain): Constraints for a regional model of the Sierra Morena-Guadalquivir Basin limit, *Tectonophysics*, 266, 425–442, [https://doi.org/10.1016/S0040-1951\(96\)00201-6](https://doi.org/10.1016/S0040-1951(96)00201-6), 1996.

860 Herraiz, M., de Vicente, G., Lindo, R., Giner, J., Simón, J.L., González, J.M., Vadillo, O., Rodríguez, M.A., Cicuéndez, J.I., Casas, A., Rincón, P., Cortés, A.L., and Lucini, M.: The recent (Upper Miocene to Quaternary) and present tectonic stress distributions in the Iberian Peninsula, *Tectonics* 19(4), 762–786, <https://doi.org/10.1029/2000TC900006>, 2000.

Hurtrez, J.E., Sol, C. and Lucazeau, F.: Effect of drainage area on hypsometry from an analysis of small-scale drainage basins in the Siwalik Hills (Central Nepal), *Earth Surf. Proc. Land.*, 24, 799-808, [https://doi.org/10.1002/\(SICI\)1096-9837\(199908\)24:9<799::AID-ESP12>3.0.CO;2-4](https://doi.org/10.1002/(SICI)1096-9837(199908)24:9<799::AID-ESP12>3.0.CO;2-4), 1999.

Jiménez-Bonilla, A., Expósito, I., Balanyá, J.C., Díaz-Azpiroz, M., and Barcos, L.: The role of strain partitioning on intermontane basin inception and isolation, External Western Gibraltar Arc, *J. Geodyn.*, 92, 1-17, <https://doi.org/10.1016/j.jog.2015.09.001>, 2015.

Keller, E.A., Pinter, N.: *Active Tectonics: Earthquakes, Uplift, and Landscape*, Prentice Hall, New Jersey, 362 pp, 2002.

Koukouvelas, I., Katsonopoulou, D., Soter, S., and Xypolias, P.: Slip rates on the Helike Fault, Gulf of Corinth, Greece: new evidence from geoarchaeology, *Terra Nova*, 17(2), 158-164, <https://doi.org/10.1111/j.1365-3121.2005.00603.x>, 2005.

Lague, D.: The stream power river incision model: evidence, theory and beyond, *Earth Surf. Proc. Land.*, 39(1), 38-61, <https://doi.org/10.1002/esp.3462>, 2014.

880 López-Cuervo, S.: *Medina Az-Zahara, Ingeniería y formas*, Ministerio de Obras Públicas y Urbanismo, Madrid., 1983.

Mantero, E.M., Alonso-Chaves, F.M., García-Navarro, E., and Azor, A.: Tectonic style and structural analysis of the Puebla de Guzmán Antiform (Iberian Pyrite Belt, South Portuguese Zone, SW Spain), *Geol. Soc. London, Spec. Publ.*, 349, 203–222, <https://doi.org/10.1144/sp349.11>, 2011.

885

- Martín-González, F.: Cenozoic tectonic activity in a Variscan basement: Evidence from geomorphological markers and structural mapping (NW Iberian Massif), *Geomorphology*, 107 (3-4), 210-225, <https://doi.org/10.1016/j.geomorph.2008.12.008>, 2009.
- 890 Matas, J., Martín Parra, L.M., Roldán, F., and Martín Serrano, A.: Mapa Geológico de España 1:200.000, sheet 76: Córdoba, Instituto Geológico Minero España, Madrid, 2010 a.
- Matas, J., Martín Parra, L.M., Rubio Pascual, F.J., Roldán, F.J., and Martín Serrano, A: Mapa Geológico de España 1:200.000, sheet 75/74: Sevilla-Puebla de Guzmán, Instituto Geológico Minero España, Madrid, 2010 b.
- 895 Moral, F., Balanyá, J.C., Expósito, I., and Rodríguez-Rodríguez, M.: Análisis geomorfológico de las terrazas fluviales del Bajo Guadalquivir e implicaciones tectónicas, *Geogaceta*, 54, 143-146, 2013.
- Niviere, B., Messenger, G., Carretier, S., and Lacan, P.: Geomorphic expression of the southern Central Andes forebulge (37  
900 degrees S, Argentina), *Terra Nova*, 25(5), 361-367, <https://doi.org/10.1111/ter.12044>, 2013.
- Oliveira, J. T.: The South Portuguese Zone, Stratigraphy and Synsedimentary Tectonism, in: *Premesozoic Geology of Iberia*, edited by: Dallmeyer, D. and Martinez, E., 334-347, Springer-Verlag, New York, 1990.
- 905 Pérez-Cáceres, I., Martínez-Poyatos, D., Simancas, J.F., and Azor, A.: The elusive nature of the Rheic Ocean suture in SW Iberia, *Tectonics*, 34, 2429–2450, <https://doi.org/10.1002/2015tc003947>, 2015.
- Perez-Peña, J., Azañón, J., and Azor, A.: CalHypso: An ArcGIS extension to calculate hypsometric curves and their statistical moments. Applications to drainage basin analysis in SE Spain, *Comput. Geosci.*, 35(6), 1214-1223,  
910 <https://doi.org/10.1016/j.cageo.2008.06.006>, 2009.
- Perron, J. and Royden, L.: An integral approach to bedrock river profile analysis, *Earth Surf. Proc. Land.*, 38(6), 570-576, <https://doi.org/10.1002/esp.3302>, 2013.
- 915 Rodríguez Vidal, J. and Díaz del Olmo, F.: Macizo Ibérico Meridional, in: *Geomorfología de España*, edited by: Gutiérrez, M., Rueda, Madrid, 101-122, 1994.

- 920 Rodríguez-Pascua, M. A., Perucha, M. A., Montejo A. J., Silva, P. G., Giner-Robles J. L., Élez, J., Bardají, T. and Roquero E.: Archaeoseismological evidence of the Medina Azahara destruction in the early 11th century (Córdoba, Spain), <https://doi.org/10.5281/zenodo.5126886>, 2021.
- 925 Roest, W. R. and Srivastava, S. P.: Kinematics of the plate boundaries between Eurasia, Iberia, and Africa in the North Atlantic from the late Cretaceous to the present, *Geology*, 19, 613 -616, [https://doi.org/10.1130/0091-7613\(1991\)019<0613:KOTPB>2.3.CO;2](https://doi.org/10.1130/0091-7613(1991)019<0613:KOTPB>2.3.CO;2), 1991.
- Salvany, J.M.: Tilting neotectonics of the Guadiamar drainage Basin, SW Spain, *Earth Surf. Proc. Land.*, 29, 145-160, <https://doi.org/10.1002/esp.1005>, 2004.
- 930 Scherler, D. and Schwanghart, W.: Drainage divide networks-Part 1: Identification and ordering in digital elevation models, *Earth Surf. Dynam.*, 8, 245-259, <https://doi.org/10.5194/esurf-8-245-2020>, 2020.
- Schwanghart, W. and Scherler, D.: Divide mobility controls knickpoint migration on the Roan Plateau (Colorado, USA), *Geology*, 48(7), 698-702, <https://doi.org/10.1130/G47054.1>, 2020.
- 935 Schwanghart, W. and Scherler, D.: Short Communication: TopoToolbox 2-MATLAB-based software for topographic analysis and modeling in Earth surface sciences, *Earth Surf. Dynam.*, 2(1), 1-7, <https://doi.org/10.5194/esurf-2-1-2014>, 2014.
- Schwanghart, W. and Scherler, D.: Bumps in river profiles: Uncertainty assessment and smoothing using quantile regression techniques, *Earth Surf. Dynam.*, 5(4), 821-839, <https://doi.org/10.5194/esurf-5-821-2017>, 2017.
- 940 Schwanghart, W., Molkenhain, C., and Scherler, D.: A systematic approach and software for the analysis of point patterns on river networks, *Earth Surf. Proc. Land.*, 46(9), 1847-1862, <https://doi.org/10.1002/esp.5127>, 2021.
- 945 Sierra, F. J., González-Delgado J. A., Dabrio C. J., Flores J. A., and Civis J.: Late Neogene depositional sequences in the foreland basin of Guadalquivir (SW Spain), in: *Tertiary Basins of Spain: The Stratigraphic Record of Crustal Kinematics*, edited by Friend, P. and Dabrio, C. J., Cambridge Univ. Press, New York, 339 -345, <https://doi.org/10.1017/CBO9780511524851.0481996>, 1996.
- 950 Silva, P.G., Goy, J.L., Zazo, C., and Bardai, T.: Fault-generated mountain fronts in southeast Spain: geomorphologic assessment of tectonic and seismic activity, *Geomorphology*, 50, 203–225, [https://doi.org/10.1016/S0169-555X\(02\)00215-5](https://doi.org/10.1016/S0169-555X(02)00215-5), 2003.

- Simancas, J.F., Carbonell, R., González Lodeiro F., Pérez-Estaún, A., Juhlin, C., Ayarza, P., Kashubin, A., Azor, A., Martínez-Poyatos, D., Almodóvar, G.R., Pascual, E., Sáez, R., Expósito, I.: The crustal structure of the transpresional Variscan Orogen of the SW Iberia: The IBERSEIS Deep Seismic Reflection Profile, *Tectonics* 22(6), 1062, <https://doi.org/10.1029/2002tc001479>, 2003.
- 955
- Simancas, J.F.: Geología de la extremidad oriental de la Zona Sudportuguesa, Tesis Doctoral, Univ. Granada, 439 pp., 1983.
- Spakman, W. and Wortel, R.: A Tomographic View on Western Mediterranean Geodynamics, in: *The TRANSMED Atlas. The Mediterranean Region from Crust to Mantle*, edited by: Cavazza, W., Roure, F., Spakman, W., Stampfli, G.M., and Ziegler, P.A., Springer, Berlin, Heidelberg, [https://doi.org/10.1007/978-3-642-18919-7\\_2](https://doi.org/10.1007/978-3-642-18919-7_2), 2004.
- 960
- Strahler, A.N.: Dynamic basis of geomorphology, *Bull. Geol. Soc. Am.*, 63,923–937, 1952.
- 965
- Teixell, A., Labaume, P., Ayarza, P., Espurt, N., de Saint Blanquat, M., and Lagabrielle, Y.: Crustal structure and evolution of the Pyrenean-Cantabrian belt: a review and new interpretations from recent concepts and data, *Tectonophysics* 724–725, 146–170, <https://doi.org/10.1016/j.tecto.2018.01.009>, 2018.
- 970
- Van der Beek P.A. and Cloetingh S.: Lithospheric flexure and the tectonic evolution of the Betic cordilleras (SE Spain), *Tectonophysics*, 203, 325–344, [https://doi.org/10.1016/0040-1951\(92\)90230-4](https://doi.org/10.1016/0040-1951(92)90230-4), 1992.
- Vázquez-Vilchez, M., Jabaloy-Sánchez, A., Azor, A., Stuart, F., Persano, C., Alonso-Chaves, F.M, Martín-Parra, L.M., Matas, J., and García-Navarro, E.: Mesozoic and Cenozoic exhumation history of the SW Iberian Variscides inferred from low-temperature thermochronology, *Tectonophysics*, 663, 110-121, <https://doi.org/10.1016/j.tecto.2015.06.034>, 2015.
- 975
- Wessel, B.: TanDEM-X Ground Segment -DEM Products Specification Document, EOC, DLR, Oberpfaffenhofen, Germany, Public Document TD-GS-PS-0021, Issue 3.1, <https://tandemx-science.dlr.de/>, 2016.
- 980
- Yanes, J. L., Expósito, I., Jiménez-Bonilla, A., Moral F., Balanyá J. C., and García Navarro, E.: Neo-tectonic reactivation and relief rejuvenation in the western Betics foreland (Viar catchment), *Geogaceta*, 66, 107-110, 2019.