

Long Runout Landslides with Associated Longitudinal Ridges in Iceland as Analogues of Martian Landslide Deposits.

Giulia Magnarini¹, Anya Champagne², Costanza Morino^{3,4}, Calvin Beck⁵, Meven Philippe^{3,6}, Armelle Decaulne⁷, Susan J. Conway⁶

5 ¹Natural History Museum, London, United Kingdom.

²Department of Earth Science and Engineering, Imperial College, London, United Kingdom.

³Université Savoie Mont Blanc, CNRS UMR 5204, Laboratoire Environnements, Dynamiques et Territoires de la Montagne, France.

⁴Department of Land, Environment, Agriculture and Forestry, Università degli Studi di Padova, Italy.

10 ⁵Normandie Université – UNICAEN - UNIROUEN, CNRS, UMR 6143 M2C, Laboratoire Morphodynamique Continentale et Côtière, Caen, France.

⁶Nantes Université, Univ Angers, Le Mans Université, CNRS, Laboratoire de Planétologie et Géosciences, LPG UMR 6112, 44000 Nantes, France.

⁷CNRS UMR 6554, Laboratoire Littoral - Environnement - Télédétection – Géomatique, Nantes Université, Nantes, France.

15 *Correspondence to:* Giulia Magnarini (giulia.magnarini@nhm.ac.uk)

Abstract. Much work has been done to study the behaviour of long runout landslides and their associated longitudinal ridges, yet the origin of the hypermobility of such landslides and the formation mechanism of longitudinal ridges are poorly understood. As terrestrial long runout landslides emplaced on glaciers commonly exhibit longitudinal ridges, the presence of these landforms has been used to infer the presence of ice on Mars, where hundreds of well-preserved long runout landslides with longitudinal ridges are found. However, the presence of the same landforms in regions where extensive glaciations did not occur, for instance, on the Moon and in the Atacama region on Earth, suggests that ice is not the only factor influencing the formation of long runout landslides with longitudinal ridges.

Iceland is a unique region for its high spatial density of well-preserved long runout landslides with longitudinal ridges. Here, we compiled the first catalogue of Icelandic long runout landslides with longitudinal ridges and we compared them with martian long runout landslides with longitudinal ridges of similar length. Moreover, we present detailed morphological observations of the Dalvík landslide deposit, in the Tröllaskagi peninsula, Iceland, and compare them with morphological observations of martian landslides.

Our results show that Icelandic long runout landslides share key features with martian analogue deposits, including splitting of longitudinal ridges and development of associated en-echelon features. Therefore, Icelandic long runout landslides with longitudinal ridges represent good morphological analogues of martian long runout landslides. Moreover, Iceland offers an opportunity to investigate the occurrence of these landforms at a regional scale as well as their link with deglaciation following the Last Glacial Maximum, which could also provide insights into martian palaeoclimatic and palaeoenvironmental conditions.

1 Introduction

Long runout landslides are hypermobile landslides that can have distinctive morphologies, such as raised terminal edges, lateral
35 levees and longitudinal ridges. Longitudinal ridges are features visible at the surface of the deposit and extend parallel to the
direction of movement (Figure 1). The hypermobility of long runout landslides is expressed by their horizontal runouts (L)
that are significantly longer than their vertical drops (H). In the literature, the H/L ratio is used to describe the mobility of
landslides, which for long runout landslides is significantly lower than 0.6 (e.g., Heim, 1932; Hsü, 1978; Legros, 2002).
Therefore, the definition of a long runout landslide is not solely based on the final horizontal length of the deposit. In fact, the
40 final horizontal length of long runout landslides can range across two orders of magnitude, from less than a kilometre to tens
of kilometres (Legros, 2002, and references within). However, it appears that a volume threshold (10^6 m^3) exists, below which
landslides do not develop a long runout (e.g., Heim, 1932; Legros, 2002).

Long runout landslides and their associated longitudinal ridges are common in the Solar System (Beddingfield et al., 2020;
Lucchitta, 1979; Schmidt et al., 2017; Singer et al., 2012), and their behaviour has been extensively studied (e.g., Davies and
45 McSaveney, 2012; Harrison and Grimm, 2003; Legros, 2002; Lucas et al., 2014; Pudasaini and Miller, 2013; Vardoulakis,
2000; Voight and Faust, 1982), yet the origin of the hypermobility of such landslides and the formation mechanism of the
longitudinal ridges are poorly understood. So far, two hypotheses have emerged: 1) the environment-dependent origin, in
which environmental conditions, namely the presence of basal ice (De Blasio, 2011, 2014; Dufresne and Davies, 2009;
Lucchitta, 1987; Mège and Bourgeois, 2011; Schmidt et al., 2017) and/or clays (Watkins et al., 2015), is a necessary condition
50 for the development of long runout landslides and their associated longitudinal ridges. According to this hypothesis, low
friction surfaces would favour tensional deformation of the sliding mass, by both longitudinal stretching and lateral spreading
(De Blasio, 2011; Dufresne and Davies, 2009). Such tensile deformation would generate the longitudinal structures observed
on the surface of long runout landslide deposits by the mechanism of necking, similarly to the tensile deformation that generates
boudinage in tectonic contexts. 2) the environment-independent origin, in which the development of longitudinal ridges does
55 not depend on the presence of a specific environmental condition and/or lithology (Magnarini et al., 2019, 2021a, 2021b).
Magnarini et al. (2019) propose that longitudinal ridges that characterise terrestrial and planetary long runout landslides may
be the expression of a mechanical instability that emerges within the flowing mass once a velocity threshold is surpassed, as
observed in laboratory experiments on rapid granular flows (Forterre and Pouliquen, 2001). However, as this mechanism
involves the generation of helicoidal convection cells within the moving landslide, it is contradicted by the evidence of the
60 preservation of the original stratigraphic layering within the final deposit, attributed to the lack of turbulence during the
emplacement of long runout landslides (e.g., Dufresne et al., 2016; Johnson, 1978; Magnarini et al., 2021a; Shreve, 1968;
Weidinger et al., 2014). To reconcile with field observations, Magnarini et al. (2021a) speculate on the existence of a vibration-
assisted mechanism that would be able to produce the longitudinal pattern via mechanical instability yet maintain the internal
structures.

65 As terrestrial long runout landslides emplaced on glaciers commonly exhibit longitudinal ridges (e.g., Dufresne et al., 2019; McSaveny, 1978), the presence of landslides with longitudinal ridges has been used to infer the past presence of ice on Mars (De Blasio, 2011; Gourronc et al., 2014; Lucchitta, 1979, 1987), where hundreds of well-preserved long runout landslides with longitudinal ridges are found. However, the presence of the same landforms and associated morphologies in regions where extensive glaciations did not occur, for instance, on the Moon (e.g., Boyce et al., 2020) and in the Atacama region on Earth
70 (Mather et al., 2014), suggests that ice is not the only factor influencing the formation of long runout landslides with longitudinal ridges.

On Earth, there are not as many well-preserved cases of long runout landslides with associated longitudinal ridges as there are on Mars. Such difference might suggest that longitudinal ridges in long runout landslides do not commonly form on our planet. However, more than one hundred landslides characterised by longitudinal ridges are easily identifiable in Iceland (e.g.,
75 Decaulne et al., 2016; Mercier et al., 2013), making it an exceptional region on Earth for its high spatial density of such landforms. The unique record of long runout landslides with longitudinal ridges in Iceland suggests that either conditions in Iceland, at the time of landslide formation, were optimal for the development of these landforms; or longitudinal ridges are indeed common in long runout landslides on Earth, but there is a preservation bias in Iceland. The study of long runout landslides with longitudinal ridges in Iceland represents an opportunity to investigate the formation mechanisms of such
80 hypermobile landslides and their possible link with past environmental conditions. A better understanding of the influence of climatic, geological, and environmental conditions in the development of hypermobile landslides will have implications for both terrestrial hazard assessment and reconstruction of extra-terrestrial palaeo-environments.

In this study, we conducted a detailed survey of landslides in Iceland to identify and compile the first Icelandic catalogue of long runout landslides with longitudinal ridges. We compared the morphological parameters of Icelandic landslides with
85 martian landslides that are similar in length. We present detailed morphological observations of one Icelandic case study, the Dalvík landslide, and we compare them with morphological observations of analogue martian landslide deposits. We show that Icelandic long runout landslides share similar morphometric values and diagnostic longitudinal ridges, to those observed in martian long runout landslides. Therefore, we conclude that Icelandic long runout landslides with associated longitudinal ridges can be used as good morphological and morphometric analogues of similar-size martian landforms, as in the case for
90 other elements of the Icelandic landscape and its associated mass-wasting processes (e.g., Conway et al., 2015, 2019; de Haas et al., 2015; Hartmann et al., 2003; Morino et al., 2019, 2023).

2 Data and Methods.

2.1 Icelandic long runout landslides.

In order to identify and map long runout landslides with longitudinal ridges in Iceland, we used available high-resolution
95 satellite/aerial imagery from Google Earth and the Icelandic Map website (<https://www.map.is>). In ArcGIS, we used digital elevation models (DEMs) provided by ArcticDEM (Porter et al., 2018; 2 m/px resolution) and their hillshade models to

extrapolate landslide morphometric data (elevation drop and horizontal length; H and L, respectively, in Supplementary Table T1). In combination with the image-data, the hillshade was used to identify the locations of extreme ends of the headscarp and toe of the deposit so their elevation values could be extracted from the DEM.

100 We acquired drone imagery of one Icelandic landslide, near the town of Dalvík (I-Landslide ID 47 in Supplementary Table T1). We used 10 Ground Control Points (GCPs) in order to correctly georeference the drone images (Supplementary Table T2), acquired by differential GPS and marked by 0.8x0.8 m square orange targets easily visible in the images. We obtained the latitude and longitude coordinates (WGS84) and the height above the ellipsoid of 10 locations, of which 8 were on the landslide deposit and 2 were on the slope adjacent the distal, frontal edge of the deposit (Figure 4), using a Leica dGPS GS09.

105 We occupied the points for >5 minutes and post-processed the data using the permanent GPS station in Akureyri (AKUR run by LMI Landmælingar Íslands – National Land Survey of Iceland) 38 km away from the site. The resulting positions had errors much less than the error produced by inherent uncertainty in identifying the control points in the drone images (the worst position had a standard deviation of 2.4 cm in vertical position, yet this was typically 3 mm). We calculated the elevation above the geoid (i.e., elevation above sea level) using an online geoid calculator (GeoidEval). We built a digital elevation

110 model (4.65 cm/px resolution) and an orthoimage (2.38 cm/px resolution) of the Dalvík landslide using Agisoft Metashape (dataset provided in Magnarini et al., 2023).

2.2 Martian long runout landslides.

We made use of the landslide inventory provided by Crosta et al. (2018) to select martian landslides with longitudinal ridges that have comparable length to Icelandic long runout landslides with longitudinal ridges. We selected martian landslides that

115 are less than 5 km long (Supplementary Table T3), which is double the length of the longest Icelandic landslide considered in this study (I-Landslide ID 103; L = 2629 m). We added additional landslides with longitudinal ridges that are not found in the Crosta et al. (2018) inventory, found using high-resolution satellite imagery acquired by the ConTeXt (CTX) camera (6 m/px resolution; Malin et al. 2007) and, where available, the High-Resolution Imaging Science Experiment (HiRISE) camera (nominal resolution 25 cm/px; McEwen et al. 2007) on board the NASA Mars Reconnaissance Orbiter (MRO). In total, we

120 selected 112 landslides. As martian landslides can be up to 70 km long (Lucchitta, 1979), those selected for this work will be also referred to as ‘small-scale’, as done in the literature (Guimpier et al., 2021).

In ArcGIS, we calculated the elevation drop (H) and measured the horizontal length (L) using the HRSC MOLA-Blended global DEM at 200 m/px resolution (Ferguson et al., 2018). CTX images were used to identify the top of the headscarp and toe of the deposit so their elevation values could be extracted from the DEM. We generated digital elevation models and

125 orthoimages of four landslides (M-Landslide ID 31; M-Landslide ID 42; M-Landslide ID 46; M-Landslide ID 47) using CTX (Malin, 2007; Malin et al., 2007) image pairs (Supplementary Table T4). CTX-derived DEMs were generated using the USGS Integrated Software for Imagers and Spectrometers (ISIS) software and commercial image analysis software SOCET SET (Kirk et al., 2008). DEMs were vertically and horizontally controlled to Mars Orbital Laser Altimeter topographic data (Smith et al., 1999; Zuber et al., 1992). The resolution of CTX DEMs and orthoimages are 20 m/pixel and 6 m/pixel, respectively.

130 We estimated the vertical precision of the CTX-derived DEMs using the established method of Okubo (2010) (Supplementary
Table T4).

3 Landslides in Iceland.

Paraglacial adjustment, that is the readjustment of glaciated landscapes to non-glacial conditions following deglaciation, is considered a critical cause of slope instability in high latitude environments (e.g., Ballantyne and Stone, 2004; Wyrwoll, 1977).
135 According to the ‘exhaustion model’ (Ballantyne, 2002; Cruden and Hu, 1993), during the paraglacial adjustment, the occurrence of mass-wasting decreases exponentially over time after deglaciation. In Iceland, the occurrence of large landslides is attributed to ice retreat following the Last Glacial Maximum (LGM), either by the effect of glacial debuttrressing or glacial rebound (e.g., Ballantyne, 2002; Coquin et al., 2015; Cossart et al., 2014; Fernández-Fernández et al., 2022; Saemundsson et al., 2022; Vick et al., 2021) or by pressurised water derived from glacial melting (Whalley et al., 1983). The ages available for
140 large landslides in Iceland fit the paraglacial exhaustion model. Most of the dated landslides occurred in the first half of the Holocene (Coquin et al., 2015; Cossart et al., 2014; Decaulne et al., 2016; Mercier et al., 2013, 2017), consistent with the Icelandic landslide theory of Jónsson (1957), according to which landslide activity initiated shortly after the retreat of the ice sheet at the end of the LGM. However, out of more than a hundred of landslides, only a few have been dated (Decaulne et al., 2016; Mercier et al., 2013, 2017), and patterns of landslide occurrence following deglaciation are still debated (e.g., Cossart
145 et al., 2014). Therefore, more data are needed to better constrain the relationship between the occurrence of large landslides and the effects of deglaciation.

Iceland has a unique high spatial density of well-preserved hypermobile large landslides with longitudinal ridges (Figure 2; Figure 3). This type of landslide is commonly found in the Tröllaskagi peninsula, in northern-central Iceland (Figure 4). This region is constituted of Tertiary basalt lava flows alternated with weathered red palaeosols (Johannesson and Saemundsson,
150 1989; Saemundsson, 1980; Thordarson and Hoskuldsson, 2002), the latter considered weak layers within which slope failure planes could potentially develop (Jónsson, 1957; Mercier et al., 2013). Three landslides with longitudinal ridges have been dated (here we report the ages as provided in the literature; for further details about dating techniques used, age-depth models, and uncertainties, the reader should refer to the cited literature): the Vatn landslide (I-landslide ID 69 in this work) is thought to have occurred between 11,400 and 10,790 cal. yr BP (Decaulne et al., 2016); the Höfðahólar landslide (I-landslide ID 118
155 in this work) is thought to have occurred between 10,200 and 7,975 cal. yr BP (Mercier et al., 2013); the Flókadalur landslide (I-landslide ID 57 in this work) is thought to have occurred between $15,577 \pm 1455$ - $11,002 \pm 2778$ cal. yr BP (Mercier et al., 2017).

3.1 The Dalvík landslide.

In this study, we investigated in the field a landslide located one kilometre northwest of the town of Dalvík, in the Tröllaskagi
160 peninsula (Figure 4). The Dalvík landslide (I-landslide ID 47) is good example of a well-preserved long runout landslide with

longitudinal ridges in Iceland. The landslide has a horizontal runout (L) of 1.210 km and a vertical drop (H) of 0.480 km (Figure 1), resulting in a H/L ratio of 0.396.

165 Similarly to other long runout landslides, the edges of the deposit are steep (on average about 30° slope), and about 15-25 m high (Figure 5d). The bedrock in the headscarp exposure shows typical alternation of Tertiary lava layers and red palaeosols (Figure 5a, 5b). The landslide deposit sits on a sedimentary cover that has an undulating surface appearance (Figure 5c) and could be due to previous mass movements or glacial deposits. The zone of depletion is characterised by a toreva block (about 200 m long, 450 m wide, and 80 m high), while the zone of accumulation is composed of a debris apron about 750 m long. Boulders decimetre- to metre-size are found on the surface of the deposit. However, size sorting of boulders from proximal to distal area of the landslide seems not to occur.

170 The debris apron is characterised by longitudinal ridges, which can be identified from both aerial/satellite images and ground photos. The longitudinal ridges occur across the entire length of the debris apron (Figure 6). At some locations, longitudinal ridges bifurcate (e.g., locations marked with a star in Figure 6; red arrowheads in Supplementary Figure 2a and 2b), forming two ridges commonly narrower than the parent ridge. Consequently, the number of longitudinal ridges increases from the proximal to the distal area of the apron. Transverse ridges appear only on the SW-side of the deposit.

175 In addition to longitudinal ridges, the Dalvík landslide exhibits other linear structures, superposed on, and broadly transverse to the longitudinal ridges (Figure 7). These linear structures appear to have en-echelon configuration. The en-echelon structures appear to be oblique to the longitudinal direction of the ridges. Towards the frontal edge of the deposit, the orientation of these linear structures changes and gradually becomes perpendicular to the extension of the ridges, which corresponds to the direction of movement of the landslide.

180 **3.2 Catalogue of Icelandic long runout landslides with longitudinal ridges.**

We compiled the first catalogue of Icelandic long runout landslides with longitudinal ridges, which comprises of 129 of these landforms (Supplementary Table T1). We included only landslides that have distinct longitudinal ridges and we omit those landslides for which the presence of longitudinal ridges was uncertain. Ridges were identified by their horizontal continuity in the downslope direction and their presence is evaluated using a top-view observation of the landslide deposit.

185 The horizontal length of the Icelandic landslides spans from 0.287 km (I-landslide ID 127) to 2.629 km (I-landslide ID 103). The median and mean values of length are 1037 m and 1150 m, respectively. The median and mean values of elevation drops are 317 m and 337 m, respectively. The H/L ratio of this set of Icelandic long runout landslides ranges from 0.149 (I-landslide ID 18) to 0.58 (I-landslide ID 42). The statistics of the morphometry of Icelandic landslides are summarised in Figure 12 and Figure 13.

190 Some of the landslides have their headscarps at the top of cliffs and mountains (e.g., I-landslide ID 8, ID 9 in Figure 3), whereas other cases develop from the mid/lower part of slopes (e.g., I-landslide ID 74, ID 88 in Figure 3). All the landslide deposits are characterised by steep edges, typically about 20 m high. About 25% of the landslides have a toreva block. Another characteristic found in some landslides is the presence of lateral levees that develop continuously from the depletion zone. In

about the 80% of the cases, the deposit does not entirely reach the slope break at the base of the slope. The landslides often
195 rest on the inclined surface that connects the slope to the bottom of the valley (e.g., I-landslide ID 45, 69, 74, ID 115 in Figure
3 and the Dalvík landslide). Such connecting surfaces have slopes of about 8°-15°. They correspond to sedimentary units,
whose origin cannot be established from remote sensing only (in Figure 5, such connecting surface is labelled ‘undulating pre-
landslide surface’). A river gorge near the Dalvík landslide exposes outcrops showing the sedimentary origin of the inclined
surface over which the landslide deposited (Figure 5c). In the case of absence of the connecting inclined surface, landslides
200 extend beyond the slope break at the base of the slope (e.g., I-landslide ID 8, ID 9 in Figure 3).

4 Landslides on Mars.

Geomorphological observations have been used to provide evidence of paraglacial periods on Mars (e.g., Gourronc et al.,
2014; Jawin et al., 2018; Jawin and Head, 2021; Mège and Bourgeois, 2011), that immediately postdate glacial retreat. These
are characterised by an assemblage of specific landforms that develop in response to ice removal, glacial unloading, and the
205 exposure of steep slopes and large sediment stores (e.g., Ballantyne, 2002). In Valles Marineris, structures diagnostic of deep-
seated gravitational slope deformation have been described (Gourronc et al., 2014; Mège and Bourgeois, 2011) and their
development has been interpreted as the consequence of slope debuttrussing and decohesion following the retreat of glaciers
(Makowska et al., 2016; Mège and Bourgeois, 2011).

Mège and Bourgeois (2011) suggest that the large long runout landslides in Valles Marineris are the result of an advanced
210 stage of paraglacial, deep-seated gravitational slope deformation that led to large-scale catastrophic slope failures. Moreover,
Mège and Bourgeois (2011) and Gourronc et al. (2014) conclude that the long runout landslides in Valles Marineris originated
as supraglacial landslides based on two observations: first, the emplacement on ice could explain the excessive runout of the
landslides (e.g., De Blasio, 2011, 2014; Dufresne et al., 2019; Dufresne and Davies, 2009; Lucas et al., 2011, 2014; Shreve,
1966); second, the longitudinal ridges that characterise their deposits are considered a morphological signature of landslides
215 emplaced on glaciers (De Blasio, 2011; Dufresne and Davies, 2009). However, Magnarini et al. (2019) argue that the presence
of an icy surface is not necessary to develop longitudinal ridges in long runout landslides on Mars (as also supported by the
existence of a long runout landslide with longitudinal ridges on the Moon (e.g., Boyce et al., 2020)), which instead could
develop from a mechanical instability imparted by high-velocity granular flow mechanisms.

4.1 Martian long runout landslides with longitudinal ridges.

220 In this work, we compiled a catalogue of martian long runout landslides less than 5 km long that exhibit longitudinal ridges,
(Supplementary Table T3, Figure 8, Figure 9, Figure 10), thus comparable to the length of Icelandic long runout landslides
with longitudinal ridges. We only included long runout landslides that have distinct longitudinal ridges and we did not consider
landslides where the presence of longitudinal ridges is uncertain. Moreover, we have excluded deposits with longitudinal ridges

that do not have matching headscarps. The catalogue that we compiled comprises of 112 of these landforms, which represent
225 the 3% of the latest martian landslide database (3118 entries) provided by Crosta et al. (2018).

The horizontal length of the martian landslides included in the catalogue spans from 0.508 km (M-landslide ID 3) to 4.902 km
(M-landslide ID 43). The median and mean values of length are 1930 m and 1803 m, respectively. The median and mean
values of elevation drops are 527 m and 536 m, respectively. The H/L ratio of this set of martian long runout landslides ranges
from 0.076 (M-landslide ID 14) to 0.468 (M-landslide ID 12). The statistics of the morphometry of small martian landslides
230 is summarised in Figure 12 and Figure 13.

Small-scale martian long runout landslides with longitudinal ridges are found between 38° N and 34° S. The largest
concentration is found in the chaotic terrains east of Valles Marineris and in the channels and valleys that flow into Chryse
Planitia. Other major clusters are found in Noctis Labyrinthus and north of Terra Cimmeria. Some of the landslides have their
headscarps at the top of cliffs and mountains (e.g., in Figure 9a, 9b; Figure 10a, 10g), whereas other cases develop from the
235 lower part of slopes (e.g., in Figure 9c; in Figure 10b, 10c, 10e, 10f, 10h). All the landslide deposits are characterised by steep
edges, typically about 20-50 m high. Only about 20% of these landslides have a toreva block. Another typical characteristic is
the presence of lateral levees that develop continuously from the depletion zone (e.g., Figure 11a). The debris aprons rest on
sub-horizontal surfaces, either valley or crater floors. In only five cases (M-landslide ID 67, 71, 79, 102, 112), the deposit does
not entirely reach the slope break at the base of the slope (e.g., in Figure 10b, 10e, 10f).

240 Longitudinal ridges are visible in both CTX and HiRISE images across the entire length of the debris aprons. Similarly to what
we observed at the Dalvík landslide, longitudinal ridges split, generating two ridges from a parent ridge (Figure 11).
Unfortunately, the resolution of the CTX-derived DEMs (20 m/px) is not able to resolve the topography of longitudinal ridges;
and no HiRISE image pairs are available to generate higher resolution DEMs of the landslides discussed in this work.
Therefore, a topographic comparison between longitudinal ridges of the martian and the Dalvík landslide could not be
245 conducted.

5 Morphometric and morphological comparison between Icelandic and martian long runout landslides with longitudinal ridges.

In this work, we used the selected small-scale martian long runout landslides to conduct morphometric and morphological
250 comparisons with Icelandic landslides with longitudinal ridges. Not only do they share morphometric similarities, but also
morphological structures: in addition to longitudinal ridges, they are all characterised by steep terminal edges and can develop
lateral levees or toreva blocks. Additionally, the headscarps of both the Icelandic and martian landslide populations are found
over a range of elevations along the slopes (i.e., they are not limited to the top of cliffs but also occurs at mid-to-lower sections
of slopes – see Figure 9c, landslide ID 46; Figure 10a/c/e/f/h, landslide IDs 52, 68, 112, 71, 106, respectively). Only five

255 martian landslides do not entirely reach the slope break at the base of the slope, whereas more than 80% of the Icelandic
landslide deposits rest on the inclined surface that connects the slope to the bottom of the valley.

In the following sections, we discuss the results from the morphometric and morphological comparisons and draw
considerations on their implications about the formation of landslides with longitudinal ridges on Mars and in Iceland.

5.1 Morphometric comparison.

260 The gigantic, long runout landslides on Mars have attracted much interest, giving rise to a commonly accepted belief that
martian landslides are an order of magnitude larger than terrestrial landslides (e.g., Brunetti et al., 2014; Legros, 2002;
Lucchitta, 1978, 1979; McEwen, 1989). However, the availability of higher resolution orbital imagery has shown the existence
of martian long runout landslides that are smaller and similar in size to terrestrial long runout landslides (Crosta et al., 2018;
Guimpier et al., 2021, 2022).

265 The mobility of long runout landslides, expressed as H/L ratio, increases with increasing volume (Heim, 1932; McEwen, 1989;
Legros, 2002). When the largest landslides are taken into account, terrestrial and martian long runout landslides seem to show
distinctive trends, suggesting that martian long runout landslides are less mobile than terrestrial long runout landslides: that is,
for long runout landslides with equal volume, the terrestrial H/L ratio is lower than the martian one. However, such a trend
becomes less obvious when larger datasets that include smaller landslides are considered (Crosta et al., 2018) and the large
270 scatter of the datapoints in the H/L-vs-L plot suggests that other parameters affect the mobility of long runout landslides.

When volume values are not available, length (L) is used as a proxy for the volume of landslides (Legros et al., 2002; Singer
et al., 2012; Lucas et al., 2014; Johnson and Campbell, 2017; Schmidt et al., 2017; Beddingfield et al., 2020; Johnson and Sori,
2020). In this work, we used L as a proxy for landslide volume (Figure 13b).

Figure 13a is a visual representation of the H/L ratio that characterises the populations of the landslides that we have analysed
275 in this study. The plot shows that the H/L ratio range that characterises the two landslide populations overlaps, and that there
is no distinct trend in the H/L ratio of the Icelandic and small-scale martian landslides. When instead plotted against elevation
drop (Figure 13c), the H/L ratio shows correlation, that is increasing with increasing fall height. This trend was shown to also
exist for large landslides on Earth, Mars, and Iapetus by Johnson and Campbell (2017) and confirmed by their numerical
simulations. The plot in Figure 13a, also, seems to show that there are two distinct lower boundaries for the martian and
280 Icelandic landslides.

In order to isolate and test the effects of the length and elevation drop on the mobility, we locked the landslide populations to
equivalent maximum length. Therefore, we restricted the selected martian landslides to a smaller subset ($N_{\text{subgroup}} = 51$), whose
maximum length matches that of the Icelandic landslides ($L < 2800$ m). It is interesting that these two populations with
equivalent L (that is, with assumed equivalent volume) show similar mobility (Icelandic average H/L ratio = 0.303; martian
285 average H/L ratio = 0.292), thus supporting the absence of distinctive trends of mobility in small-scale terrestrial and martian
long runout landslides. Additionally, the martian landslide subgroup shows cases that are characterised by higher elevation
drops (Icelandic max elevation drop = 810 m; martian max elevation drop = 1071 m). As explained in Melosh (2011), the

lower surface gravity of Mars means that for the same material strength Mars can support proportionally higher topography than Earth. These results are again in agreement with Johnson and Campbell (2017).

290 **5.2 Flow structures and behaviour of longitudinal ridges.**

Lateral spreading of landslide deposits has been considered as an important factor controlling the behaviour of longitudinal ridges and the thickness of a landslide deposit (Magnarini et al., 2021b). Unconfined long runout landslides tend to spread laterally, causing the thinning of the deposit with distance and hence divergence of the longitudinal ridges. However, the existence of a scaling relationship between the thickness of the landslide and the spacing between the ridges (i.e., the distance
295 between ridges ranges between 2 and 3 times the thickness of the deposit; Magnarini et al., 2019, 2021a, b) implies that as the landslide thins while laterally spreading then the distance between the ridges has to decrease accordingly. Therefore, the scaling relationship is maintained by the splitting of parent ridges and also by the appearance of new smaller ridges between spreading longitudinal ridges (Magnarini et al., 2019).

We observed longitudinal ridges bifurcating, thus splitting and developing two ridges from the parent ridge, in both the Dalvík
300 landslide (Figure 6 and Supplementary Figure S2a, S2b) and small-scale martian landslides (Figure 11). The resulting new ridges are less wide. This process leads to an increase in the number of longitudinal ridges with distance. Similar behaviour has been described for the 63-km-long martian Coprates Labes landslide, in Valles Marineris, by Magnarini et al. (2019) (Supplementary Figure S2c, S2d). Therefore, the occurrence of ridge splitting seems to be scale-independent. However, in the Dalvík landslide, we do not observe the appearance of new, smaller ridges between two existing ridges, which is observed in
305 the small-scale martian landslide ID 109 (Figure 11b). Similar ridge behaviour is observed in two other martian landslides that are not included in the current selection, the landslide shown in Figure 11c, and the Coprates Labes landslide (Magnarini et al., 2019).

The fact that the Dalvík landslide shows only the splitting of parent longitudinal ridges into two smaller ridges and does not show the appearance of new ridges between two existing ridges may be due to limited lateral spreading at Dalvík compared to
310 the martian examples. Limited lateral spreading in turn limits the thickness reduction of the deposit and limits the space for new ridges to develop. Lateral spreading may be limited in Dalvík by: the basal surface over which the landslide moved not providing sufficiently low friction; the rheology of the landslide prevented it from spreading further laterally; or the landslide was not large enough, thus did not have enough kinetic energy to expand further. The latter proposed explanation may have support in the fact that the landslides in which we report the appearance of new ridges (in addition to ridge splitting) are all
315 much larger than the Dalvík landslide.

Similarly to the Dalvík landslide, linear, en-echelon structures are seen in an 8-km-long martian landslide (e.g., Figure 14a, 16b) and have also been described in the 63-km-long Coprates Labes landslide by Magnarini et al. (2019) (Figure 14c, 14d). Similar linear structures superposed on longitudinal ridges were also described in the Sherman Glacier landslide deposit, Alaska, as ‘transverse fissures’ by Shreve (1966) and McSaveney (1978), in the Lamplugh landslide, Alaska, by Dufresne et
320 al. (2019), and in the Iymek landslide, China, by Shi et al. (2022). Such linear structures have been interpreted as kinematic

indicators, as they indicate the differential velocity of adjacent sections of the landslides during emplacement (e.g., Dufresne et al., 2019; Magnarini et al., 2019; McSaveney, 1978; Shreve, 1966).

In the Dalvík landslide, towards the frontal edge of the deposit, these linear structures change orientation and gradually become perpendicular to the direction of the ridges (Figure 7), which corresponds to the direction of movement of the landslide. The observed change in the orientation of the en-echelon structures may represent the expression of changing velocity during emplacement: the oblique configuration shows that different parts of the deposit were characterised by different velocities; and the transition to transverse configuration, i.e., perpendicular to the landslide movement direction, shows that different parts of the landslide progressively attained similar velocity. Given that the oblique-to-transverse transition occurs towards the terminus of the deposit, it may represent evidence of slowing down of the landslide. However, such transition does not seem to take place towards the terminal part of the martian landslide in Figure 14a and 14b, therefore, either a different interpretation is required or the martian landslide came to a halt in a different manner than the Dalvík landslide.

5.3 Implications and future directions.

In this work, we showed that small-scale Icelandic and martian long runout landslides share similar mobility and morphological characteristics. It is reasonable to consider that the high mobility that these landslides have in common and their morphological similarities are a result of a similar mechanism of emplacement. However, the geomorphological issue of ‘equifinality’ (i.e., similar landforms originating from different processes) is a major challenge in the interpretation of martian landforms, as in situ data are limited to robotic exploration at few localized sites and none of them regard, and must be taken into consideration when linking morphology to processes (e.g., Balme et al., 2011). It follows also that interpretations based on morphological analysis may be biased due to morphological similarity (Johnson and Campbell, 2017; Magnarini et al., 2019; Johnson and Sori, 2020). With this in mind, we can, nevertheless, attempt to draw considerations about the implications of such similarities in terms of emplacement mechanism, emplacement environment, and different gravity.

The effect of gravity on the formation of long runout landslides on different planetary bodies is highly debated and the matter is not settled yet. In this work, we have attempted to remove biases that populations of landslides with non-negligible size differences could carry with them. Our results do not suggest that gravity affects the mobility, as we do not see distinct trends between martian and Icelandic landslides in our plots. Simulating terrestrial and martian landslides, Johnson and Campbell (2017) reached similar conclusions that the lower surface gravity does not lead to significantly reduced mobility.

To our knowledge, no other region on Earth shows the same high spatial density of long runout landslides with longitudinal ridges as Iceland does. Such unicity suggests that since the LGM (which broadly corresponds to the age of Icelandic landslides; Decaulne et al., 2016; Mercier et al., 2017, 2013), no other terrestrial setting has had conditions favourable for their development, and also preservation, to such a scale. On Mars, small-scale long runout landslides with longitudinal ridges are not characterised by a high spatial density distribution, as in Iceland, although they tend to occur in steep-slope settings provided by chasmata, outflow channels, and chaotic terrains. However, there is evidence that the martian record of small-scale landslides could have been largely removed. In fact, we identified several deposits almost fully obliterated by sedimentary

burial (Supplementary Figure S1a, S1b). One of the best examples is found in Coprates Chasma, Valles Marineris, on Mars, where we found evidence of landslides with longitudinal ridges that have been partially buried and subsequently exhumed (Supplementary Figure S1c). The incomplete record of these landforms hampers our reconstruction of regions where conditions were favourable for their formation. In addition to a matter of where, the incomplete record prevents us from establishing when such conditions were optimal. Based on the existing age estimation of the largest long runout landslides on Mars, long runout landslides in Valles Marineris span from 3.5 Gya to 50 Ma (Quantin et al., 2004; Hager and Schedl, 2017); near Hydrates Chaos they span from 835 Ma to 252 Ma (Molaro et al., 2024); and younger, small-scale landslides (< 2 km long) have been found to be less than 20 My old (Guimpier et al., 2021). According to these results, it appears that long runout landslides on Mars have been recurring throughout much of martian history, suggesting that the formation mechanism of long runout landslides and their longitudinal ridges is persistent or recurrent in time.

The age difference between Icelandic and martian landslides simply reflects different landslide populations of which we have accessible records. Therefore, it is not possible to establish whether the lack of record of martian landslides more recent than 20 Ma is evidence that the mechanism favourable to their formation may have become unavailable on Mars.

The availability of an extensive, well-preserved, geomorphological record of long runout landslides with longitudinal ridges in Iceland represents a unique opportunity to study their formation mechanisms and the influence of the environment on their development (both the geological and climatic contexts) at the regional scale. Reconstructing the palaeoenvironmental conditions at the time of their emplacement will help to better constrain the relationship between the occurrence of landslides with longitudinal ridges and the potential presence of ice or ice-cemented material (permafrost) during their emplacement. Not only this will represent important advancement in understanding the formation of these catastrophic landslides on Earth, but it will also provide insights into possible past martian scenarios. However, formation mechanisms of long runout landslides with longitudinal ridges that solely rely on climatic and environmental conditions should be carefully considered, especially on Mars, as it is well established that the planet has undergone dramatic climatic changes throughout its geological history (e.g., Laskar et al., 2004; Head et al., 2005; Bibring, 2006; Kite and Conway, 2024).

6 Conclusions.

We compile the first catalogue of long runout landslides with longitudinal ridges in Iceland and an equivalent catalogue of small-scale (< 5 km long) landslides with longitudinal ridges on Mars. We measured length and drop height in both catalogues and found significant overlap between the populations. In addition to morphometric comparability, our morphological observations show that Icelandic long runout landslides share similar structure behaviours with martian analogue deposits, such as splitting of longitudinal ridges and development of en-echelon features. Therefore, this supports our hypothesis that Icelandic long runout landslides with longitudinal ridges represent good morphological analogues of martian landforms. The large record of long runout landslides with longitudinal ridges emplaced after the Last Glacial Maximum in Iceland offers a

unique opportunity to study the possible relation between the development of these landforms and glacial/paraglacial conditions. Unlocking this information will both contribute to tackling the challenges that current glaciated regions on Earth will face due to ongoing global warming and gain insights into martian palaeoclimatic and palaeoenvironmental conditions.

390 **Data availability.**

The standard data products for Mars used in the study are available from the NASA PDS. The shapefiles and topographic products generated for this work are provided through the data repository Figshare (Magnarini et al., 2023).

Author contribution.

GM: Conceptualisation, Investigation, Field work, Writing – Original draft.

395 AC: Investigation.

CM: Writing – Reviewing and Editing.

MP: Field work, Writing – Reviewing and Editing.

CB: Field work, Writing – Reviewing and Editing.

AD: Writing – Reviewing and Editing.

400 SJC: Resources, Investigation, Field work, Writing – Reviewing and Editing.

Competing interests.

One author is one of the editors of the special issue. The peer-review process was guided by an independent editor, and the authors have also no other competing interests to declare.

405 **Acknowledgements.**

We thank reviewers Daniel Ben-Yehoshua and Ed Rhodes for their constructive comments, which helped improving the quality and clarity of the manuscript. We thank Associate Editor Frances Butcher for handling this manuscript and providing additional comments.

GM gratefully acknowledges UKRI Science Technology Facilities Council (STFC) funding ST/V000799/1.

410 SJC is funded for her HiRISE work by the French space agency CNES. SJC, MP and CB are funded by the Agence Nationale de la Recherche in the framework of the project ANR-19-CE01-0010 PERMOLARDS.

We acknowledge the financial support from the Observatoire Sciences de l'Univers Nantes Atlantique (OSUNA).

References

- Ballantyne, C. K.: A general model of paraglacial landscape response, *The Holocene*, 12, 371–376,
415 <https://doi.org/10.1191/0959683602hl553fa>, 2002.
- Ballantyne, C. K. and Stone, J. O.: The Beinn Alligin rock avalanche, NW Scotland: cosmogenic ^{10}Be dating, interpretation and significance, *The Holocene*, 14, 448–453, <https://doi.org/10.1191/0959683604hl720rr>, 2004.
- Balme, M. R., Bargery, A. S., Gallagher, C. J., and Gupta, S.: Martian Geomorphology: Introduction, In: Balme, M. R., Bargery, A. S., Gallagher, C. J., and Gupta, S. (eds) *Martian Geomorphology*. Geological Society, London, Special
420 Publications, 356, 1-3, <https://doi.org/10.1144/SP356.1>, 2011.
- Beddingfield, C. B., Beyer, R. A., Singer, K. N., McKinnon, W. B., Runyon, K., Grundy, W., Stern, S. A., Bray, V., Dhingra, R., Moore, J. M., Ennico, K., Olkin, C. B., Schenk, P., Spencer, J. R., Weaver, H. A., and Young, L. A.: Landslides on Charon, *Icarus*, 335, 113383, <https://doi.org/10.1016/j.icarus.2019.07.017>, 2020.
- Bibring J. P. et al.: Global Mineralogical and Aqueous Mars History Derived from OMEGA/Mars Express Data, *Science*, 312,
425 400–404, <https://doi.org/10.1126/science.1122659>, 2006.
- Boyce, J. M., Mouginis-Mark, P., and Robinson, M.: The Tsiolkovskiy crater landslide, the moon: An LROC view, *Icarus*, 337, 113464, <https://doi.org/10.1016/j.icarus.2019.113464>, 2020.
- Brunetti, M. T., Guzzetti, F., Cardinali, M., Fiorucci, F., Santangelo, M., Mancinelli, P., Komatsu, G., and Borselli, L.: Analysis of a new geomorphological inventory of landslides in Valles Marineris, Mars, *Earth Planet. Sci. Lett.*, 405, 156–168,
430 <https://doi.org/10.1016/j.epsl.2014.08.025>, 2014.
- Conway, S. J., Balme, M. R., Kreslavsky, M. A., Murray, J. B., and Towner, M. C.: The comparison of topographic long profiles of gullies on Earth to gullies on Mars: A signal of water on Mars, *Icarus*, 253, 189–204, <https://doi.org/10.1016/j.icarus.2015.03.009>, 2015.
- Conway, S. J., de Haas, T., and Harrison, T. N.: Martian gullies: a comprehensive review of observations, mechanisms and
435 insights from Earth analogues, *Geol. Soc. Lond. Spec. Publ.*, 467, 7–66, <https://doi.org/10.1144/SP467.14>, 2019.
- Coquin, J., Mercier, D., Bourgeois, O., Cossart, E., and Decaulne, A.: Gravitational spreading of mountain ridges coeval with Late Weichselian deglaciation: impact on glacial landscapes in Tröllaskagi, northern Iceland, *Quat. Sci. Rev.*, 107, 197–213, <https://doi.org/10.1016/j.quascirev.2014.10.023>, 2015.
- Cossart, E., Mercier, D., Decaulne, A., Feuillet, T., Jónsson, H. P., and Sæmundsson, Þ.: Impacts of post-glacial rebound on
440 landslide spatial distribution at a regional scale in northern Iceland (Skagafjörður), *Earth Surf. Process. Landf.*, 39, 336–350, <https://doi.org/10.1002/esp.3450>, 2014.

- Crosta, G. B., Frattini, P., Valbuzzi, E., and De Blasio, F. V.: Introducing a New Inventory of Large Martian Landslides, *Earth Space Sci.*, 5, 89–119, <https://doi.org/10.1002/2017EA000324>, 2018.
- Cruden, D. M. and Hu, X. Q.: Exhaustion and steady state models for predicting landslide hazards in the Canadian Rocky Mountains, *Geomorphology*, 8, 279–285, [https://doi.org/10.1016/0169-555X\(93\)90024-V](https://doi.org/10.1016/0169-555X(93)90024-V), 1993.
- Davies, T. R. H. and McSaveney, M. J.: Mobility of long-runout rock avalanches, in: *Landslides: Types, Mechanisms and Modeling*, edited by: Stead, D. and Clague, J. J., Cambridge University Press, Cambridge, 50–58, <https://doi.org/10.1017/CBO9780511740367.006>, 2012.
- De Blasio, F. V.: Landslides in Valles Marineris (Mars): A possible role of basal lubrication by sub-surface ice, *Planet. Space Sci.*, 59, 1384–1392, <https://doi.org/10.1016/j.pss.2011.04.015>, 2011.
- De Blasio, F. V.: Friction and dynamics of rock avalanches travelling on glaciers, *Geomorphology*, 213, 88–98, <https://doi.org/10.1016/j.geomorph.2014.01.001>, 2014.
- Decaulne, A., Cossart, E., Mercier, D., Feuillet, T., Coquin, J., and Jónsson, H. P.: An early Holocene age for the Vatn landslide (Skagafjörður, central northern Iceland): Insights into the role of postglacial landsliding on slope development, *The Holocene*, 26, 1304–1318, <https://doi.org/10.1177/0959683616638432>, 2016.
- Dufresne, A. and Davies, T. R.: Longitudinal ridges in mass movement deposits, *Geomorphology*, 105, 171–181, <https://doi.org/10.1016/j.geomorph.2008.09.009>, 2009.
- Dufresne, A., Bösemeier, A., and Prager, C.: Sedimentology of rock avalanche deposits – Case study and review, *Earth-Sci. Rev.*, 163, 234–259, <https://doi.org/10.1016/j.earscirev.2016.10.002>, 2016.
- Dufresne, A., Wolken, G. J., Hibert, C., Bessette-Kirton, E. K., Coe, J. A., Geertsema, M., and Ekström, G.: The 2016 Lamplugh rock avalanche, Alaska: deposit structures and emplacement dynamics, *Landslides*, 16, 2301–2319, <https://doi.org/10.1007/s10346-019-01225-4>, 2019.
- Ferguson, L. R., Hare, T. M., and Laura, J.: HRSC and MOLA Blended Digital Elevation Model at 200m v2. Astrogeology PDS Annex, U.S. Geological Survey., 2018.
- Fernández-Fernández, J. M., Etzelmüller, B., Morino, C., and Sæmundsson, Þ.: Iceland, in: *Periglacial Landscapes of Europe*, edited by: Oliva, M., Nývlt, D., and Fernández-Fernández, J. M., Springer International Publishing, Cham, 427–473, https://doi.org/10.1007/978-3-031-14895-8_15, 2022.
- Forterre, Y. and Pouliquen, O.: Longitudinal Vortices in Granular Flows, *Phys. Rev. Lett.*, 86, 5886–5889, <https://doi.org/10.1103/PhysRevLett.86.5886>, 2001.

- 470 Gourronc, M., Bourgeois, O., Mège, D., Pochat, S., Bultel, B., Massé, M., Le Deit, L., Le Mouélic, S., and Mercier, D.: One million cubic kilometers of fossil ice in Valles Marineris: Relicts of a 3.5Gy old glacial landsystem along the Martian equator, *Geomorphology*, 204, 235–255, <https://doi.org/10.1016/j.geomorph.2013.08.009>, 2014.
- Guimpier, A., Conway, S. J., Mangeney, A., Lucas, A., Mangold, N., Peruzzetto, M., Pajola, M., Lucchetti, A., Munaretto, G., Sæmundsson, T., Johnsson, A., Le Deit, L., Grindrod, P., Davis, J., Thomas, N., and Cremonese, G.: Dynamics of recent
475 landslides (<20 My) on Mars: Insights from high-resolution topography on Earth and Mars and numerical modelling, *Planet. Space Sci.*, 206, 105303, <https://doi.org/10.1016/j.pss.2021.105303>, 2021.
- Guimpier, A., Conway, S. J., Pajola, M., Lucchetti, A., Simioni, E., Re, C., Noblet, A., Mangold, N., Thomas, N., and Cremonese, G.: Pre-landslide topographic reconstruction in Baetis Chaos, mars using a CaSSIS Digital Elevation Model, *Planet. Space Sci.*, 218, 105505, <https://doi.org/10.1016/j.pss.2022.105505>, 2022.
- 480 de Haas, T., Hauber, E., Conway, S. J., van Steijn, H., Johnsson, A., and Kleinhans, M. G.: Earth-like aqueous debris-flow activity on Mars at high orbital obliquity in the last million years, *Nat. Commun.*, 6, 7543, <https://doi.org/10.1038/ncomms8543>, 2015.
- Hager, A. and Schedl, A. D.: Classification and Ages of Landslides Within Valles Marineris, 48th Lunar and Planetary Science Conference, event-title: 48th Annual Lunar and Planetary Science ConferenceADS Bibcode: 2017LPI...48.2076H, 2076,
485 2017.
- Harrison, K. P. and Grimm, R. E.: Rheological constraints on martian landslides, *Icarus*, 163, 347–362, [https://doi.org/10.1016/S0019-1035\(03\)00045-9](https://doi.org/10.1016/S0019-1035(03)00045-9), 2003.
- Hartmann, W. K., Thorsteinsson, T., and Sigurdsson, F.: Martian hillside gullies and icelandic analogs, *Icarus*, 162, 259–277, [https://doi.org/10.1016/S0019-1035\(02\)00065-9](https://doi.org/10.1016/S0019-1035(02)00065-9), 2003.
- 490 Head, J., Mustard, J., Kreslavsky, M., Milliken, R. E., and Marchant, D. R.: Recent ice ages on Mars, *Nature* 426, 797–802, <https://doi.org/10.1038/nature02114>, 2003.
- Heim, A.: *Der Bergsturz und Menschenleben*, Fretz und Wasmuth Verlag, Zurich, 218 pp., 1932.
- Hsü, K. J.: Albert Heim: Observations on Landslides and Relevance to Modern Interpretations, in: *Developments in Geotechnical Engineering*, vol. 14, Elsevier, 71–93, <https://doi.org/10.1016/B978-0-444-41507-3.50009-X>, 1978.
- 495 Jawin, E. R. and Head, J. W.: Patterns of late Amazonian deglaciation from the distribution of martian paraglacial features, *Icarus*, 355, 114117, <https://doi.org/10.1016/j.icarus.2020.114117>, 2021.
- Jawin, E. R., Head, J. W., and Marchant, D. R.: Transient post-glacial processes on Mars: Geomorphologic evidence for a paraglacial period, *Icarus*, 309, 187–206, <https://doi.org/10.1016/j.icarus.2018.01.026>, 2018.
- Johannesson, H. and Saemundsson, K.: *Geological map of Iceland, 1:500000, Bedrock geology*, 1989.

- 500 Johnson, B.: Blackhawk Landslide, California, U.S.A., in: *Developments in Geotechnical Engineering*, vol. 14, Elsevier, 481–504, <https://doi.org/10.1016/B978-0-444-41507-3.50022-2>, 1978.
- Johnson, B. C. and Campbell, C. S.: Drop Height and Volume Control the Mobility of Long-Runout Landslides on the Earth and Mars, *Geophys. Res. Lett.*, 44, 12,091-12,097, <https://doi.org/10.1002/2017GL076113>, 2017.
- Johnson, B. C. and Sori, M. M.: Landslide Morphology and Mobility on Ceres Controlled by Topography, *J. Geophys. Res. Planets*, 125, e2020JE006640, <https://doi.org/10.1029/2020JE006640>, 2020.
- 505 Jónsson, Ó.: Skriðuföll og snjóflóð, *Bókaútgafan Norðri*, 1, 141, 1957.
- Kirk, R. L., Howington-Kraus, E., Rosiek, M. R., Anderson, J. A., Archinal, B. A., Becker, K. J., Cook, D. A., Galuszka, D. M., Geissler, P. E., Hare, T. M., Holmberg, I. M., Keszthelyi, L. P., Redding, B. L., Delamere, W. A., Gallagher, D., Chapel, J. D., Eliason, E. M., King, R., and McEwen, A. S.: Ultrahigh resolution topographic mapping of Mars with MRO HiRISE stereo images: Meter-scale slopes of candidate Phoenix landing sites, *J. Geophys. Res. Planets*, 113, <https://doi.org/10.1029/2007JE003000>, 2008.
- 510 Kite, E.S., Conway, S. Geological evidence for multiple climate transitions on Early Mars. *Nat. Geosci.* 17, 10–19 (2024). <https://doi.org/10.1038/s41561-023-01349-2>.
- Laskar, J., Correia, A.C.M., Gastineau, M., Joutel, F., Levrard, B., and Robutel, P.: Long term evolution and chaotic diffusion of the insolation quantities of Mars, *Icarus*, 170 (2), 343-364, <https://doi.org/10.1016/j.icarus.2004.04.005>, 2004.
- 515 Legros, F.: The mobility of long-runout landslides, *Eng. Geol.*, 63, 301–331, [https://doi.org/10.1016/S0013-7952\(01\)00090-4](https://doi.org/10.1016/S0013-7952(01)00090-4), 2002.
- Lucas, A., Mangeney, A., Mège, D., and Bouchut, F.: Influence of the scar geometry on landslide dynamics and deposits: Application to Martian landslides, *J. Geophys. Res. Planets*, 116, <https://doi.org/10.1029/2011JE003803>, 2011.
- 520 Lucas, A., Mangeney, A., and Ampuero, J. P.: Frictional velocity-weakening in landslides on Earth and on other planetary bodies, *Nat. Commun.*, 5, 3417, <https://doi.org/10.1038/ncomms4417>, 2014.
- Lucchitta, B. K.: A large landslide on Mars, *GSA Bull.*, 89, 1601–1609, [https://doi.org/10.1130/0016-7606\(1978\)89<1601:ALLOM>2.0.CO;2](https://doi.org/10.1130/0016-7606(1978)89<1601:ALLOM>2.0.CO;2), 1978.
- 525 Lucchitta, B. K.: Landslides in Valles Marineris, Mars, *J. Geophys. Res. Solid Earth*, 84, 8097–8113, <https://doi.org/10.1029/JB084iB14p08097>, 1979.
- Lucchitta, B. K.: Valles Marineris, Mars: Wet debris flows and ground ice, *Icarus*, 72, 411–429, [https://doi.org/10.1016/0019-1035\(87\)90183-7](https://doi.org/10.1016/0019-1035(87)90183-7), 1987.

- Magnarini, G., Mitchell, T. M., Grindrod, P. M., Goren, L., and Schmitt, H. H.: Longitudinal ridges imparted by high-speed granular flow mechanisms in martian landslides, *Nat. Commun.*, 10, 4711, <https://doi.org/10.1038/s41467-019-12734-0>, 2019.
- 530 Magnarini, G., Mitchell, T. M., Goren, L., Grindrod, P. M., and Browning, J.: Implications of longitudinal ridges for the mechanics of ice-free long runout landslides, *Earth Planet. Sci. Lett.*, 574, 117177, <https://doi.org/10.1016/j.epsl.2021.117177>, 2021a.
- Magnarini, G., Mitchell, T. M., Grindrod, P. M., Schmitt, H. H., and Petro, N. E.: Scaling Relationship Between the Wavelength of Longitudinal Ridges and the Thickness of Long Runout Landslides on the Moon, *J. Geophys. Res. Planets*, 535 126, e2021JE006922, <https://doi.org/10.1029/2021JE006922>, 2021b.
- Magnarini, G., Champagne, A., Morino, C., Beck, C., Philippe, M., and Conway, S. J.: Long Runout Landslides with Longitudinal Ridges in Iceland as Analogues of Martian Landforms [Dataset], <https://doi.org/10.6084/m9.figshare.22333036.v1>, 2023.
- Makowska, M., Mège, D., Gueydan, F., and Chéry, J.: Mechanical conditions and modes of paraglacial deep-seated 540 gravitational spreading in Valles Marineris, Mars, *Geomorphology*, 268, 246–252, <https://doi.org/10.1016/j.geomorph.2016.06.011>, 2016.
- Malin, M.: MRO Context Camera Experiment Data Record Level 0 V1.0, MRO-M-CTX-2-EDR-L0-V1.0, NASA Planetary Data System, <https://doi.org/10.17189/1520266>, 2007.
- Malin, M. C., Bell III, J. F., Cantor, B. A., Caplinger, M. A., Calvin, W. M., Clancy, R. T., Edgett, K. S., Edwards, L., Haberle, 545 R. M., James, P. B., Lee, S. W., Ravine, M. A., Thomas, P. C., and Wolff, M. J.: Context Camera Investigation on board the Mars Reconnaissance Orbiter, *J. Geophys. Res. Planets*, 112, <https://doi.org/10.1029/2006JE002808>, 2007.
- Mather, A. E., Hartley, A. J., and Griffiths, J. S.: The giant coastal landslides of Northern Chile: Tectonic and climate interactions on a classic convergent plate margin, *Earth Planet. Sci. Lett.*, 388, 249–256, <https://doi.org/10.1016/j.epsl.2013.10.019>, 2014.
- 550 McEwen, A. S.: Mobility of large rock avalanches: Evidence from Valles Marineris, Mars, *Geology*, 17, 1111–1114, [https://doi.org/10.1130/0091-7613\(1989\)017<1111:MOLRAE>2.3.CO;2](https://doi.org/10.1130/0091-7613(1989)017<1111:MOLRAE>2.3.CO;2), 1989.
- McEwen, A. S., Eliason, E. M., Bergstrom, J. W., Bridges, N. T., Hansen, C. J., Delamere, W. A., Grant, J. A., Gulick, V. C., Herkenhoff, K. E., Keszthelyi, L., Kirk, R. L., Mellon, M. T., Squyres, S. W., Thomas, N., and Weitz, C. M.: Mars Reconnaissance Orbiter’s High Resolution Imaging Science Experiment (HiRISE), *J. Geophys. Res. Planets*, 112, 555 <https://doi.org/10.1029/2005JE002605>, 2007.
- McSaveney, M. J.: Chapter 6 - Sherman Glacier Rock Avalanche, Alaska, U.S.A., in: *Developments in Geotechnical Engineering*, vol. 14, edited by: Voight, B., Elsevier, 197–258, <https://doi.org/10.1016/B978-0-444-41507-3.50014-3>, 1978.

- Mège, D. and Bourgeois, O.: Equatorial glaciations on Mars revealed by gravitational collapse of Valles Marineris wallslopes, *Earth Planet. Sci. Lett.*, 310, 182–191, <https://doi.org/10.1016/j.epsl.2011.08.030>, 2011.
- 560 Mercier, D., Cossart, E., Decaulne, A., Feuillet, T., Jónsson, H. P., and Sæmundsson, Þ.: The Höfðahólar rock avalanche (sturzström): Chronological constraint of paraglacial landsliding on an Icelandic hillslope, *The Holocene*, 23, 432–446, <https://doi.org/10.1177/0959683612463104>, 2013.
- Mercier, D., Coquin, J., Feuillet, T., Decaulne, A., Cossart, E., Jónsson, H. P., and Sæmundsson, Þ.: Are Icelandic rock-slope failures paraglacial? Age evaluation of seventeen rock-slope failures in the Skagafjörður area, based on geomorphological stacking, radiocarbon dating and tephrochronology, *Geomorphology*, 296, 45–58, <https://doi.org/10.1016/j.geomorph.2017.08.011>, 2017.
- 565 Melosh, H. J.: Slopes and mass movement. In: *Planetary Surface Processes*. Cambridge Planetary Science. Cambridge University Press, 319-347, <https://doi.org/10.1017/CBO9780511977848>, 2011.
- Morino, C., Conway, S. J., Sæmundsson, Þ., Helgason, J. K., Hillier, J., Butcher, F. E. G., Balme, M. R., Jordan, C., and Argles, T.: Molards as an indicator of permafrost degradation and landslide processes, *Earth Planet. Sci. Lett.*, 516, 136–147, <https://doi.org/10.1016/j.epsl.2019.03.040>, 2019.
- 570 Morino, C., Conway, S., Philippe, M., Peignaux, C., Svennevig, K., Lucas, A., Noblet, A., Roberti, G., Butcher, F., and Collins-May, J.: Permafrost molards as an analogue for ejecta-ice interactions at Hale Crater, Mars, *Icarus*, 391, 115363, <https://doi.org/10.1016/j.icarus.2022.115363>, 2023.
- 575 Okubo, C. H.: Structural geology of Amazonian-aged layered sedimentary deposits in southwest Candor Chasma, Mars, *Icarus*, 207, 210–225, <https://doi.org/10.1016/j.icarus.2009.11.012>, 2010.
- Porter, C., Morin, P., Howat, I., Noh, M.-J., Bates, B., Peterman, K., Keesey, S., Schlenk, M., Gardiner, J., Tomko, K., Willis, M., Kelleher, C., Cloutier, M., Husby, E., Foga, S., Nakamura, H., Platson, M., Wethington, M., Williamson, C., Bauer, G., Enos, J., Arnold, G., Kramer, W., Becker, P., Doshi, A., D'Souza, C., Cummens, P., Laurier, F., and Bojesen, M.: ArcticDEM, <https://doi.org/10.7910/DVN/OHHUKH>, 2018.
- 580 Pudasaini, S. P. and Miller, S. A.: The hypermobility of huge landslides and avalanches, *Eng. Geol.*, 157, 124–132, <https://doi.org/10.1016/j.enggeo.2013.01.012>, 2013.
- Quantin, C., Allemand, P., Mangold, N., and Delacourt, C.: Ages of Valles Marineris (Mars) landslides and implications for canyon history, *Icarus*, 172, 555–572, <https://doi.org/10.1016/j.icarus.2004.06.013>, 2004.
- 585 Sæmundsson, K.: Outlines of the geology of Iceland, *Jökull*, 29, 7–28, 1980.

- Saemundsson, P., Morino, C., and Conway, S. J.: 5.22 - Mass-Movements in Cold and Polar Climates, in: *Treatise on Geomorphology* (Second Edition), edited by: Shroder, J. (Jack) F., Academic Press, Oxford, 350–370, <https://doi.org/10.1016/B978-0-12-818234-5.00117-6>, 2022.
- Schmidt, B. E., Hughson, K. H. G., Chilton, H. T., Scully, J. E. C., Platz, T., Nathues, A., Sizemore, H., Bland, M. T., Byrne, S., Marchi, S., O'Brien, D. P., Schorghofer, N., Hiesinger, H., Jaumann, R., Pasckert, J. H., Lawrence, J. D., Buzckowski, D., Castillo-Rogez, J. C., Sykes, M. V., Schenk, P. M., DeSanctis, M.-C., Mitri, G., Formisano, M., Li, J.-Y., Reddy, V., LeCorre, L., Russell, C. T., and Raymond, C. A.: Geomorphological evidence for ground ice on dwarf planet Ceres, *Nat. Geosci.*, 10, 338–343, <https://doi.org/10.1038/ngeo2936>, 2017.
- Shi, A.-W., Wang, Y.-F., Cheng, Q.-G., Lin, Q.-W., Li, T.-H., and Wünnemann, B.: The largest rock avalanche in China at Iymek, Eastern Pamir, and its spectacular emplacement landscape, *Geomorphology*, 108521, <https://doi.org/10.1016/j.geomorph.2022.108521>, 2022.
- Shreve, R. L.: Sherman Landslide, Alaska, *Science*, 154, 1639–1643, <https://doi.org/10.1126/science.154.3757.1639>, 1966.
- Shreve, R. L.: *The Blackhawk landslide*, Geological Society of America, Boulder, Colo, 47 pp., 1968.
- Singer, K. N., McKinnon, W. B., Schenk, P. M., and Moore, J. M.: Massive ice avalanches on Iapetus mobilized by friction reduction during flash heating, *Nat. Geosci.*, 5, 574–578, <https://doi.org/10.1038/ngeo1526>, 2012.
- Smith, D. E., Zuber, M. T., Solomon, S. C., Phillips, R. J., Head, J. W., Garvin, J. B., Banerdt, W. B., Muhleman, D. O., Pettengill, G. H., Neumann, G. A., Lemoine, F. G., Abshire, J. B., Aharonson, O., David, C., Brown, Hauck, S. A., Ivanov, A. B., McGovern, P. J., Zwally, H. J., and Duxbury, T. C.: The Global Topography of Mars and Implications for Surface Evolution, *Science*, 284, 1495–1503, <https://doi.org/10.1126/science.284.5419.1495>, 1999.
- Thordarson, T. and Hoskuldsson, A.: *Iceland (Classic Geology in Europe 3)*, Terra Publishing (UK), 200 pp., 2002.
- Vardoulakis: Catastrophic landslides due to frictional heating of the failure plane, *Mech. Cohesive-Frict. Mater.*, 5, 443–467, [https://doi.org/10.1002/1099-1484\(200008\)5:6<443::AID-CFM104>3.0.CO;2-W](https://doi.org/10.1002/1099-1484(200008)5:6<443::AID-CFM104>3.0.CO;2-W), 2000.
- Vick, L. M., Mikkelsen, M., Corner, G. D., Kjellman, S. E., Trønnes, L., Hormes, A., Allaart, L., and Bergh, S. G.: Evolution and temporal constraints of a multiphase postglacial rock slope failure, *Geomorphology*, 398, 108069, <https://doi.org/10.1016/j.geomorph.2021.108069>, 2021.
- Voight, B. and Faust, C.: Frictional heat and strength loss in some rapid landslides, *Géotechnique*, 32, 43–54, <https://doi.org/10.1680/geot.1982.32.1.43>, 1982.
- Watkins, J. A., Ehlmann, B. L., and Yin, A.: Long-runout landslides and the long-lasting effects of early water activity on Mars, *Geology*, 43, 107–110, <https://doi.org/10.1130/G36215.1>, 2015.

615 Weidinger, J. T., Korup, O., Munack, H., Altenberger, U., Dunning, S. A., Tippelt, G., and Lottermoser, W.: Giant rockslides from the inside, *Earth Planet. Sci. Lett.*, 389, 62–73, <https://doi.org/10.1016/j.epsl.2013.12.017>, 2014.

Whalley, W. B., Douglas, G. R., and Jonsson, A.: The Magnitude and Frequency of Large Rockslides in Iceland in the Postglacial, *Geogr. Ann. Ser. Phys. Geogr.*, 65, 99–110, <https://doi.org/10.2307/520724>, 1983.

Wyrwoll, K. H.: Causes of rock-slope failure in a cold area: Labrador-Ungava., in: *Reviews in Engineering Geology: Vol. 3 - Landslides.*, vol. 3, Geological Society of America, 59–67, 1977.

Zuber, M. T., Smith, D. E., Solomon, S. C., Muhleman, D. O., Head, J. W., Garvin, J. B., Abshire, J. B., and Bufton, J. L.: The Mars Observer laser altimeter investigation, *J. Geophys. Res. Planets*, 97, 7781–7797, <https://doi.org/10.1029/92JE00341>, 1992.

625

630

635

640

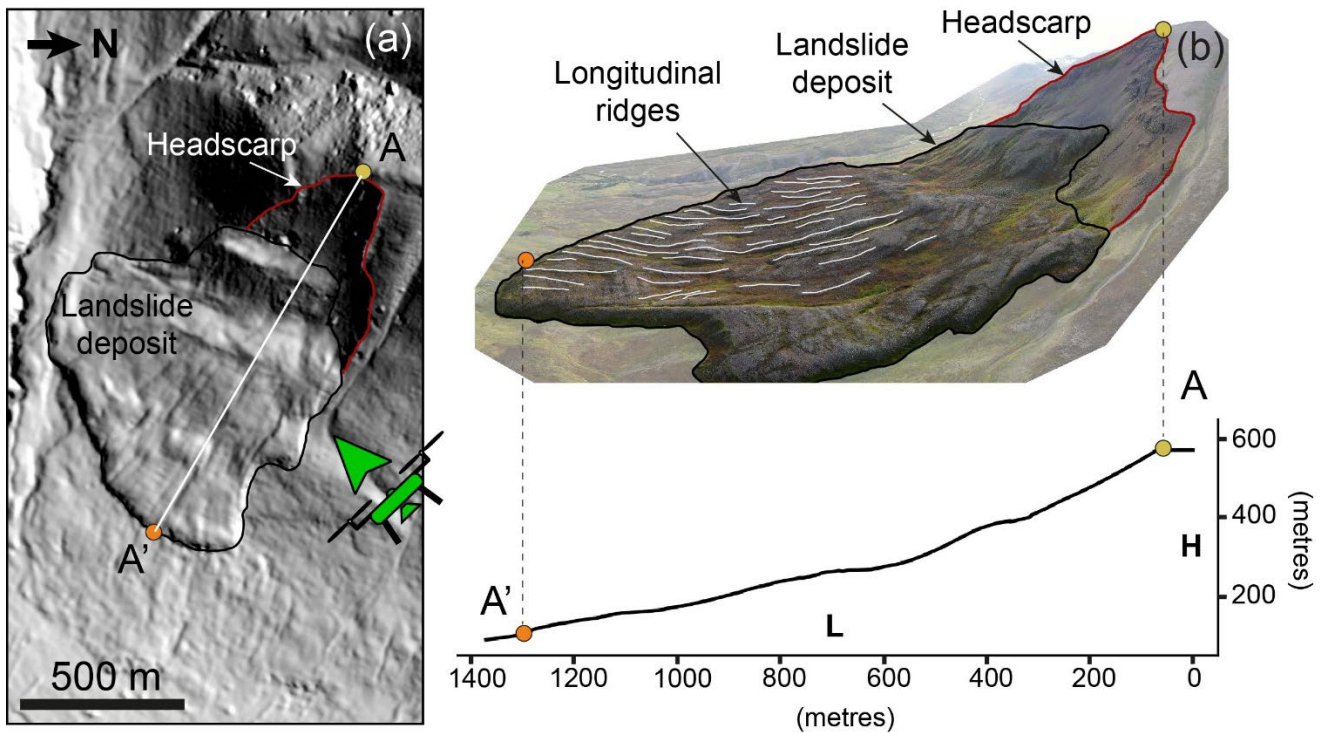
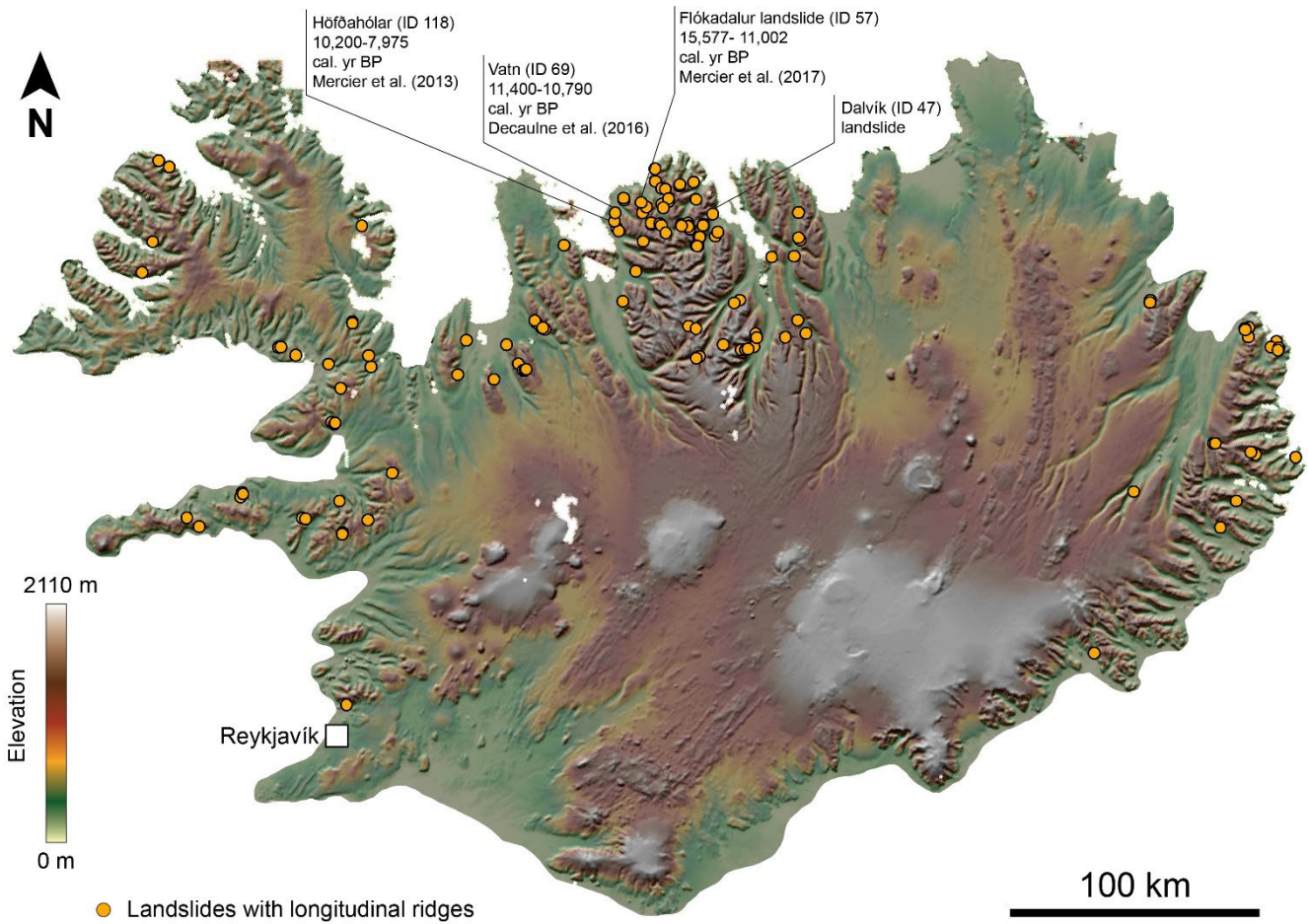


Figure 1: Example of a terrestrial long runout landslide with longitudinal ridges. The red line shows the headscarp of the landslide. The black line shows the extent of the landslide deposit. The white lines in panel (b) show the longitudinal ridges that mark the landslide deposit and extend parallel to the direction of the movement. The yellow and orange dots represent the highest point of the headscarp and the lowest point of the deposit, respectively; these locations are used to derive the elevation drop (H) and the horizontal extent (L) of the landslide along the topographic profile obtained along the section A-A' (white line in panel (a)). Panel (a) shows the hillshade model of the Dalvík landslide obtained from the 2 m/px resolution ArcticDEM (Porter et al., 2018). Panel (b) shows a photomosaic from drone imagery of the Dalvík landslide and its longitudinal topographic profile. The green arrowhead in panel (a) show the view direction of the images acquired with the drone and used to generate the photomosaic in panel (b).

645

650



655 **Figure 2: Distribution of long runout landslides with longitudinal ridges in Iceland.** The yellow dots represent locations of 129 long runout landslides with longitudinal ridges, which geographic coordinates are given in Supplementary Table T1. The map shows the location of the three landslides with longitudinal ridges that have been dated by previous work and the location of the Dalvík landslide, investigated in this work. Base map is the hillshaded and colour-keyed 500 m/px resolution ArcticDEM (Porter et al., 2018).

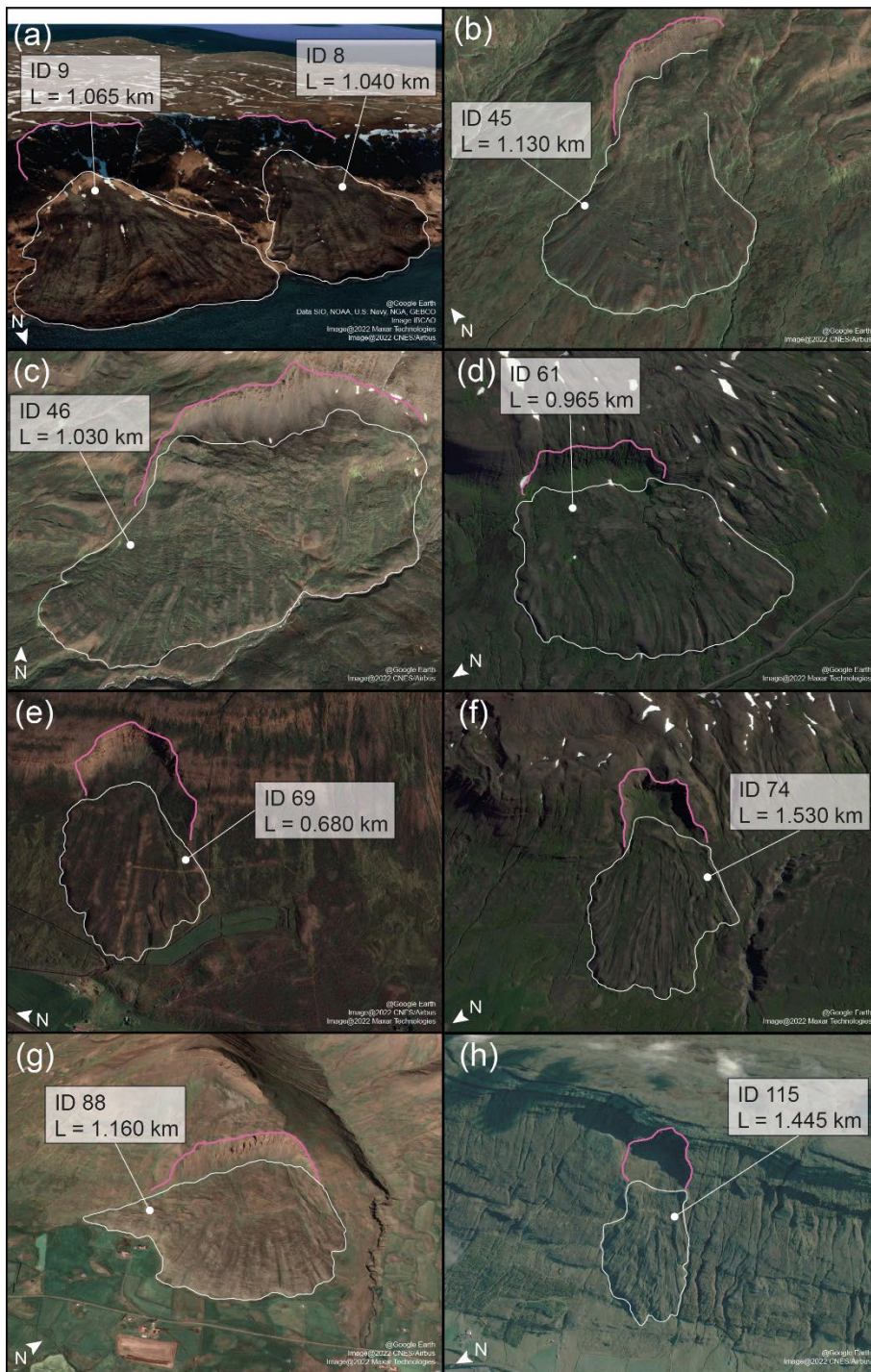


Figure 3: Examples of long runout landslides with ridges in Iceland. The white lines identify the landslide deposits and the pink lines identify the headscarps. For each landslide, ID and length (L) are provided. For the full list of the landslides catalogued in this work, see Supplementary Table T1.

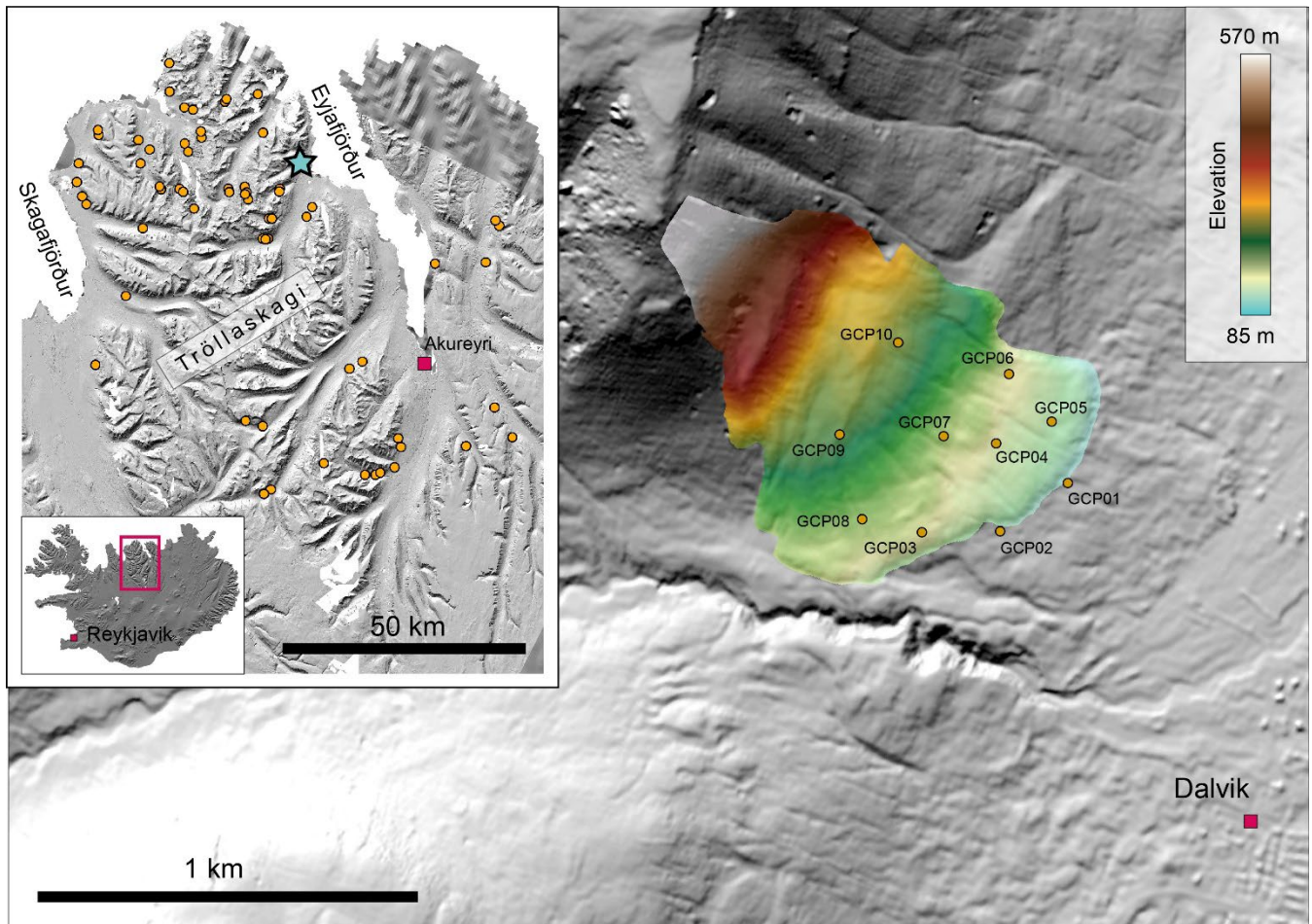
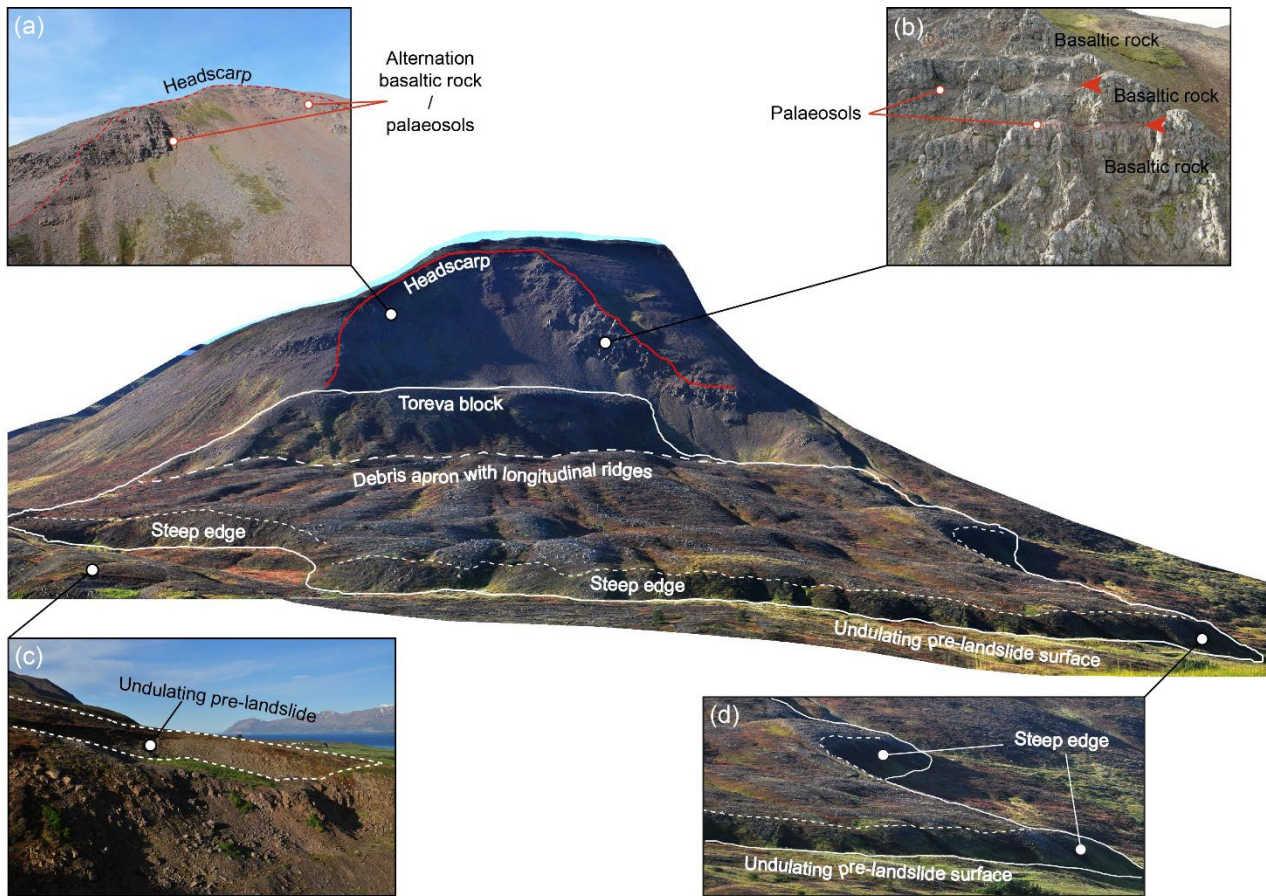
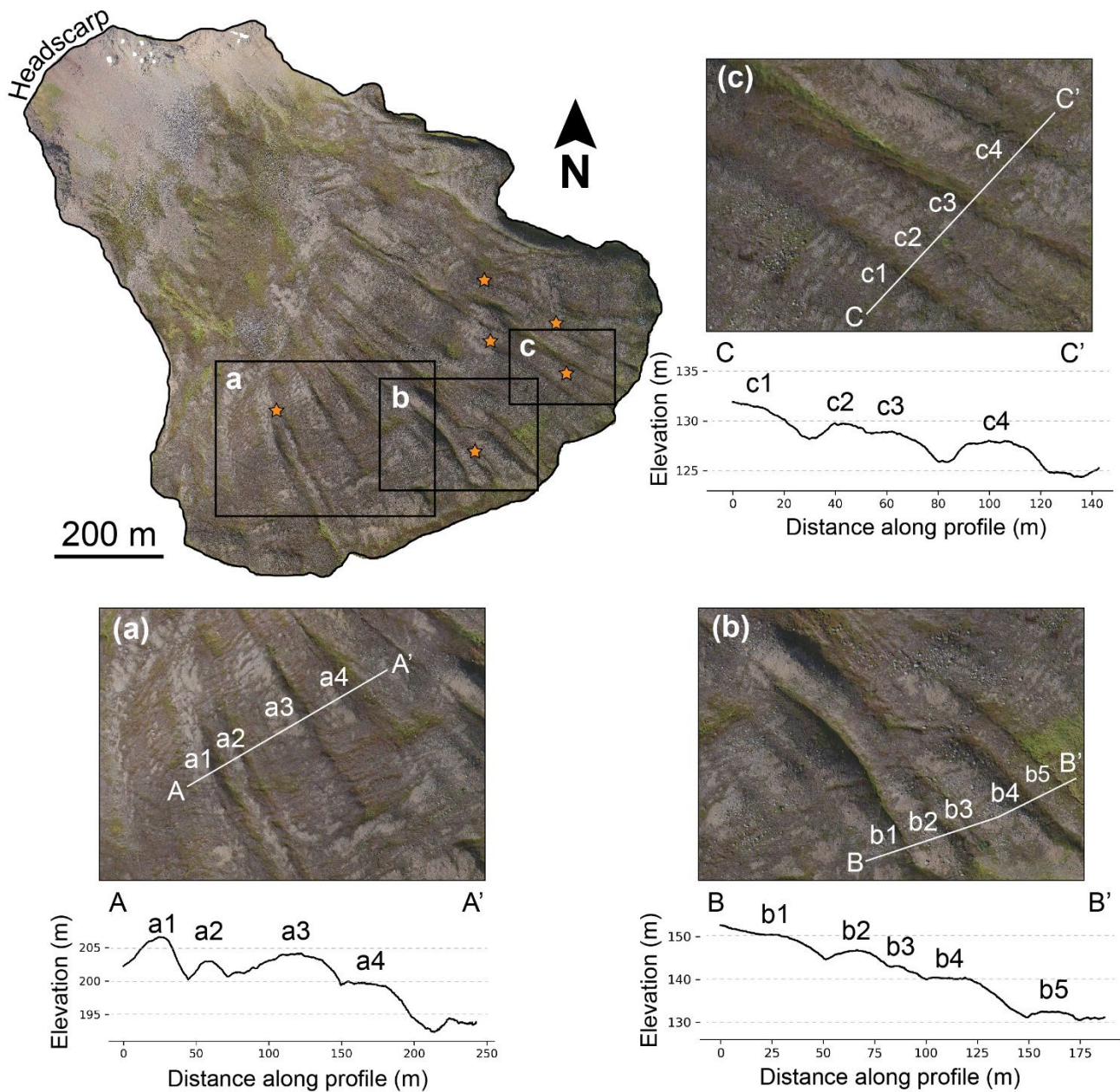


Figure 4: The Dalvík landslide in the Tröllaskagi peninsula. The landslide is located near the town of Dalvík. The landslide is ID 47 in the Icelandic catalogue of long runout landslides with longitudinal ridges that we compiled in this work. The large panel shows in colour the DEM generated from drone imagery overlain on a hillshaded render of the ArcticDEM and the points indicate the location of 10 GCPs used to georeference the DEM. The inset shows the location of the Dalvík landslide in Tröllaskagi peninsula (blue star) along with the other landslides in this work (orange dots), showing that it is the Icelandic region with the highest landslide density. The location of the Tröllaskagi peninsula within Iceland is shown in the bottom left corner of the inset with red box. The inset uses as a basemap the hillshaded ArcticDEM (Porter et al., 2018).

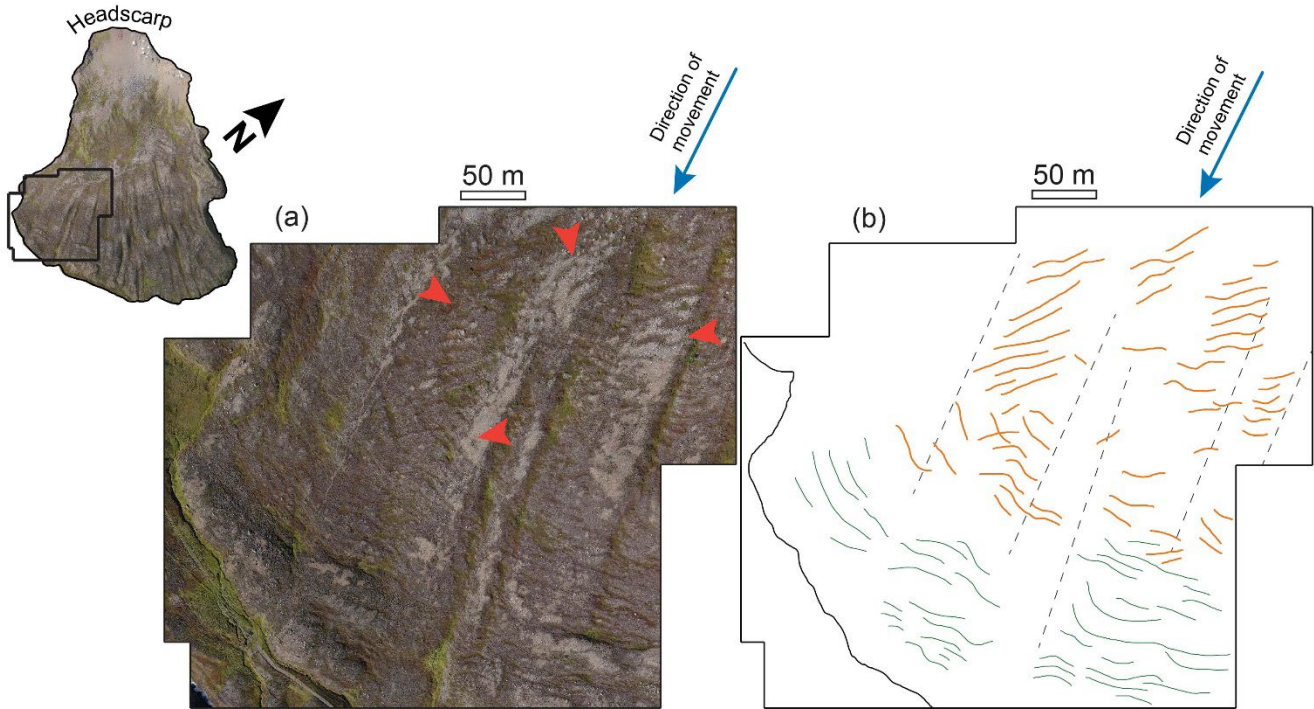
665



670 **Figure 5: The Dalvík landslide.** The image in the centre shows a perspective view of the drone photomosaic of the Dalvík landslide. Annotations highlight the main morphological features and structures. Panel a) and b) are photos acquired by drone showing details of the rock formations that characterise the headscarp. Panel c) shows an outcrop of the unsorted sediments that form the undulating pre-landslide surface over which the Dalvík landslide is found. Panel d) shows a closer view of the 15-25 m high, steep termination of the landslide deposit.



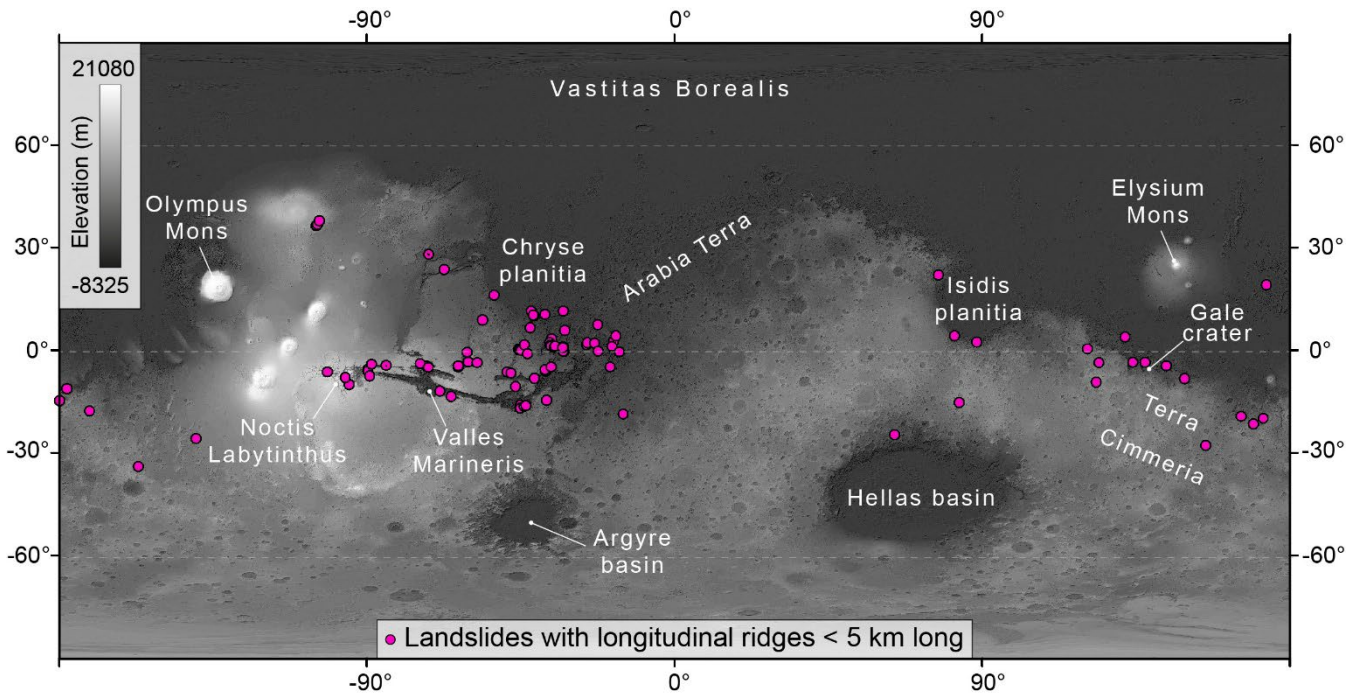
675 **Figure 6: Morphology of longitudinal ridges in Dalvik landslide.** The image shows the high resolution orthoimage of the Dalvik landslide generated from drone-acquired photos. The orthoimage provides complete view of the extent of longitudinal ridges over the landslide deposit. Panels a), b) and c) show close-up views of longitudinal ridges, whose morphology is shown by topographic profiles extracted from the profiles (A-A', B-B', and C-C', respectively) and the annotations a1, a2, etc indicate corresponding ridges in the images and profiles. The stars show locations where longitudinal ridges bifurcate, resulting in the development of two ridges from a parent ridge.



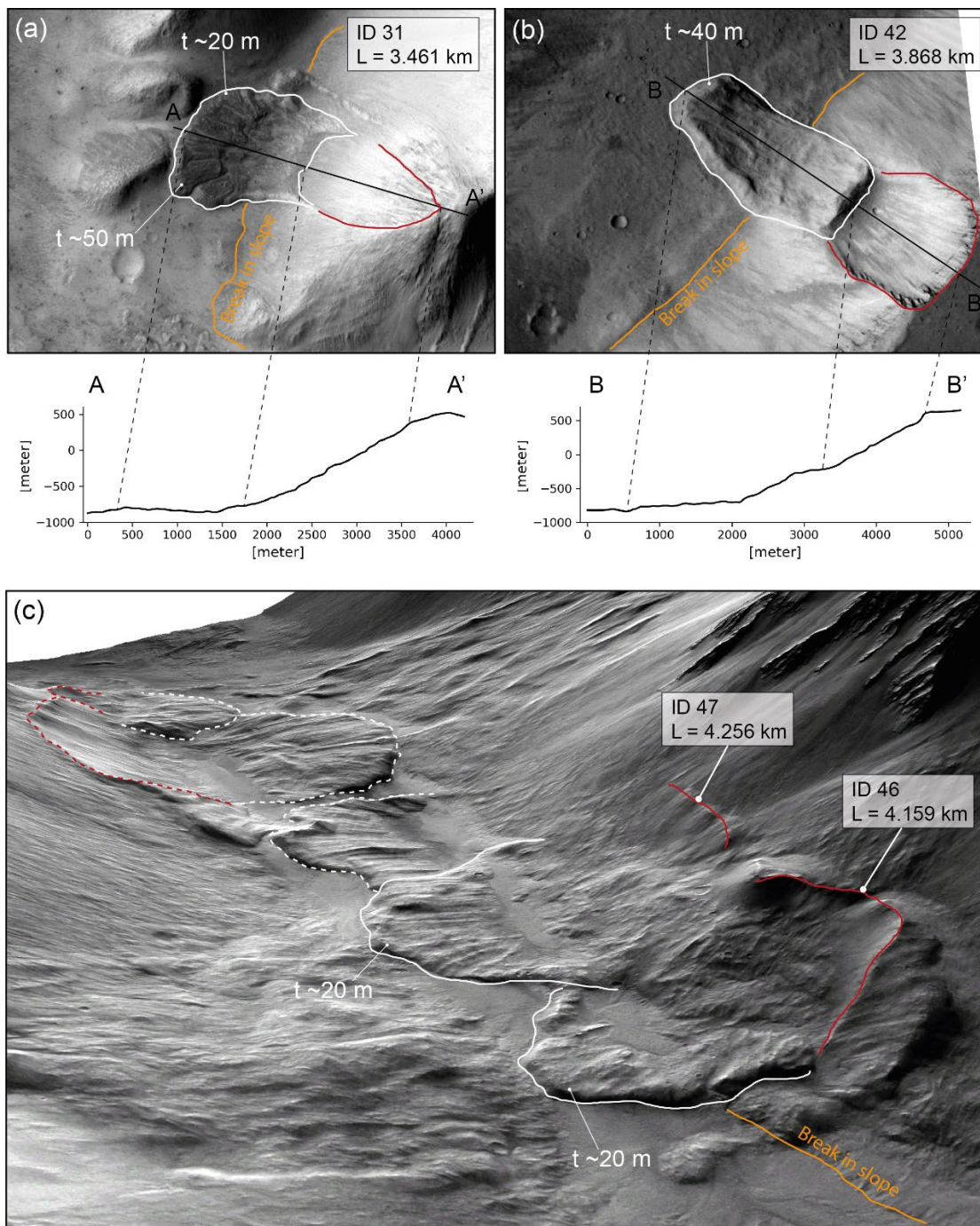
680

Figure 7: En-echelon structures found superposing longitudinal ridges of the Dalvík landslide. Panel a) Drone-acquired image mosaic of the SW terminal part of the Dalvík landslide. Panel b) shows digitised en-echelon features observed on the longitudinal ridges in panel a). Orange lines represent the linear structures that are oblique to the direction of the ridges, which are shown with dashed black lines. Green lines represent the linear structures that are transverse to the direction of the ridges. This map shows how the transition from oblique-to-transverse occurs towards the terminal part of the deposit. Blue arrows show the direction of movement of the landslide; red arrowheads show locations where en-echelon linear structures are found superposing longitudinal ridges.

685



690 **Figure 8: Distribution of long runout landslides (less than 5 km long) with longitudinal ridges on Mars.** The pink dots represent the locations of 112 long runout landslides with longitudinal ridges, with geographic coordinates given in Supplementary Table T3. Base map is a greyscale render of the HRSC MOLA-blended global digital elevation model (200 m/px resolution). Some examples of the landslide deposits included in this catalogue are shown in Figure 10.



695 **Figure 9: Martian long runout landslides with longitudinal ridges.** Panels a) and b) show top-views of landslide ID 31 (CTX image
 D16_033578_1752_XN_04S084W) and landslide ID 42 (CTX image D21_035252_2083_XN_28N072W), and their longitudinal
 topographic profiles; in both panels, North is up. Panel c) is an oblique view of a cluster of landslides with longitudinal ridges
 (J16_050944_1665_XN_13S065W). Red lines show headscarps; white lines show landslide deposits (dashed red and white lines are for
 700 landslides not included in the catalogue because either too long (> 5 km) or missing the headscarp); orange lines show the base of the slope.
 In each panel, the landslide ID, lengths, and thickness (t) values at the frontal edge are provided.

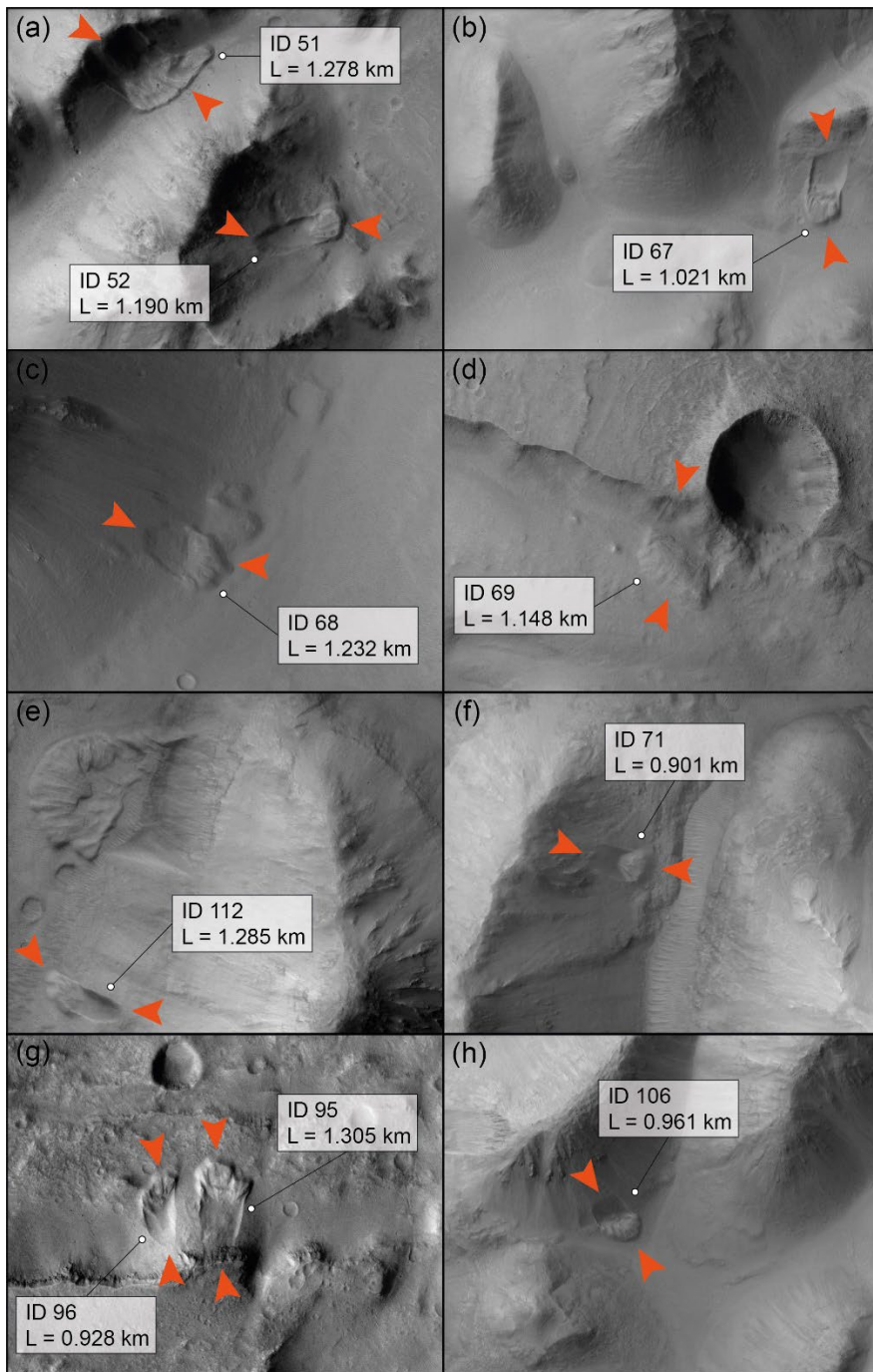
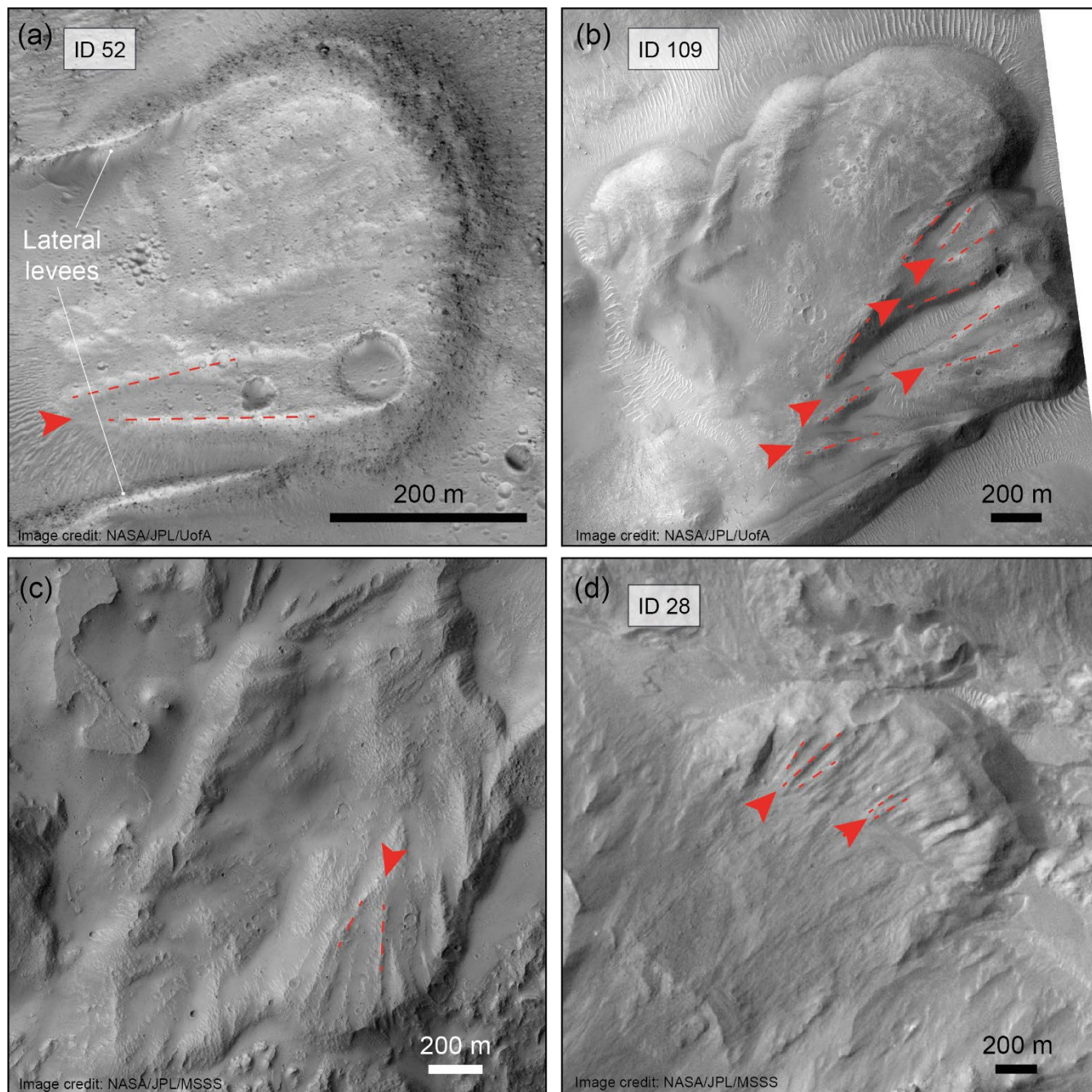


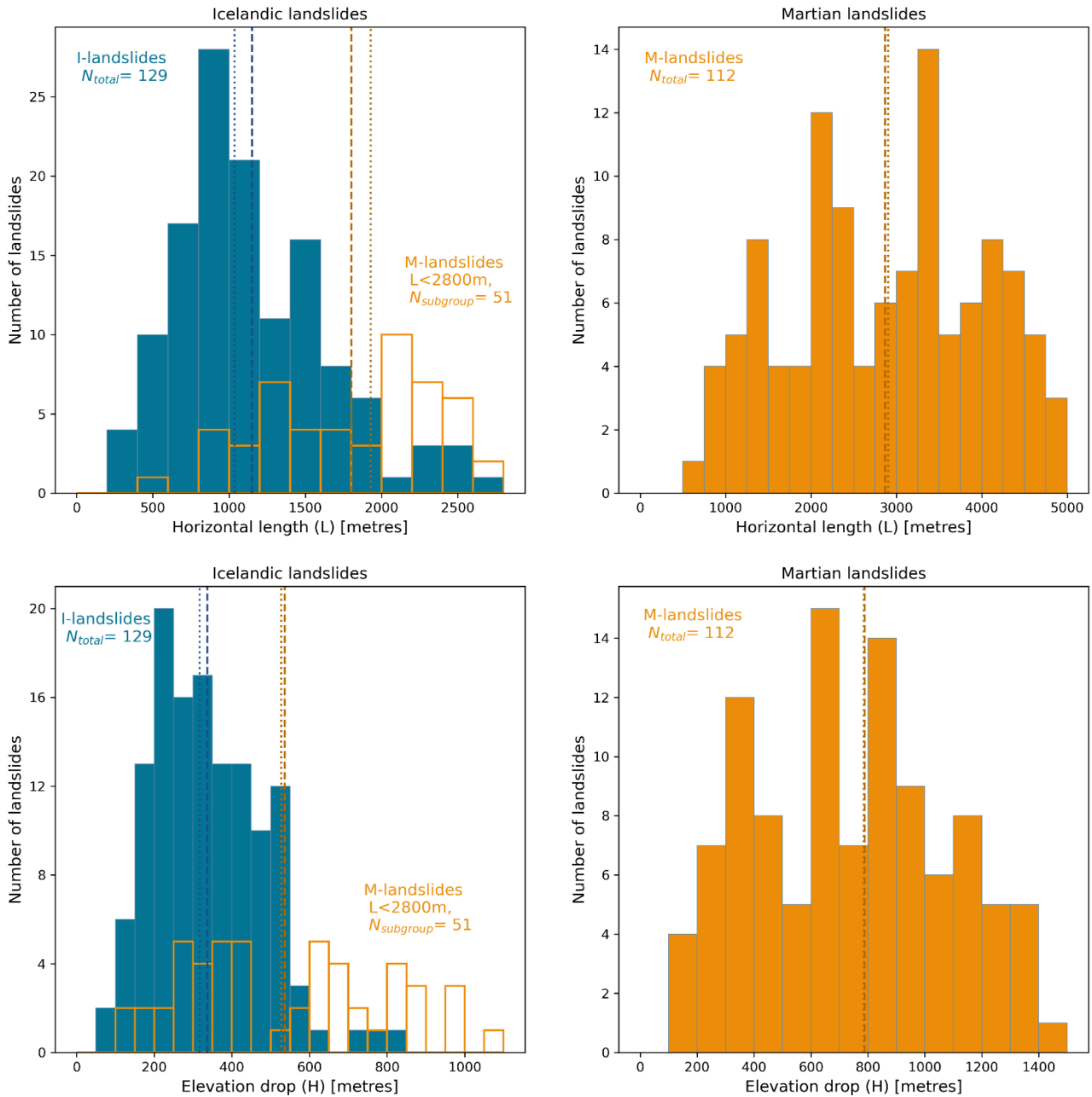
Figure 10: Examples of martian long runout landslides less than 5 km long that exhibit longitudinal ridges. The orange arrowheads show the approximation location of the headscarp and of the toe of the landslides. For each landslide, ID and length are provided. For the full list of the landslides catalogued in this work, see Supplementary Table T3. In all panels, North is up. a) CTX image P16_007244_1796_XN_00S045W; b) CTX image P19_008417_1807_XN_00N036W; c) CTX image P05_002800_1814_XI_01N035W; d) CTX image P02_002022_1801_XN_00N035W; e) CTX image P16_007349_1831_XN_03N032W; f) CTX image

705

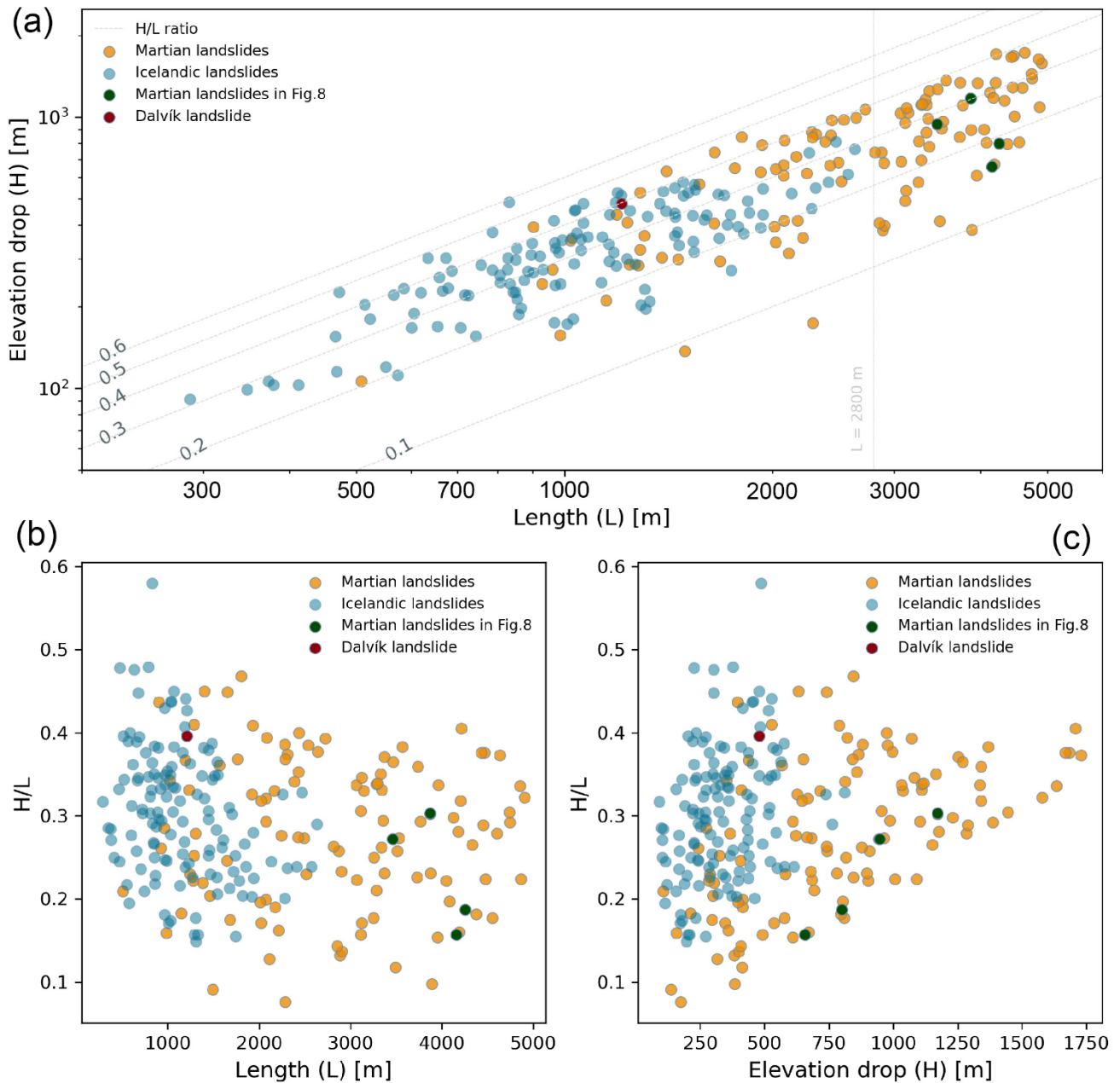


710 **Figure 11: Behaviour of longitudinal ridges in small-scale (<5 km long) martian long runout landslides.** The red arrowheads show the locations where longitudinal ridges bifurcate, resulting in the development of two ridges from a parent ridge. Dashed red lines show the orientation of longitudinal ridges. Panel a), b), and d) show examples of landslides included in this work and whose number ID is provided in the figure (HiRISE images: ESP_040790_1805, ESP_070830_1795 and ESP_026497_1755, respectively. Image credit:

715 NASA/JPL/UofA). Panel c) shows an example of bifurcating longitudinal ridges in a landslide not included in the list presented in this work, as its length is slightly more than 5 km (CTX image: P01_001337_1757_XN_04S063W. Image credit: NASA/JPL/MSSS). In all panels, North is up.



720 **Figure 12: Morphometric results.** The data in ‘sea blue’ colour represent the Icelandic landslide population. The data in ‘gold’ colour represent the martian landslides less than 5 km long. Top panels show the distribution of landslide lengths. The lower panels show the distribution of landslide elevation drops. In the panels showing Icelandic landslides, the data relative to the subgroup of the martian landslides with maximum length less than or equal to the maximum length of the Icelandic landslides are also plotted. Dashed lines represent the mean and dotted lines represent the median.



725 **Figure 13: H/L ratio.** In panel (a) the elevation drop (H) is plotted against the horizontal length (L) to visually represent the H/L ratios that characterise the landslides compiled in this study. The dashed grey lines represent constant H/L ratios, whose values are given at the left-hand side of each line. The light grey vertical line shows the value of $L = 2800$ m, which corresponds to the maximum length of the martian landslide subgroup. Axes are given in logarithmic scale. Panel (b) and panel (c) show the H/L ratio plotted against the horizontal length (L) and the elevation drop (H), respectively.

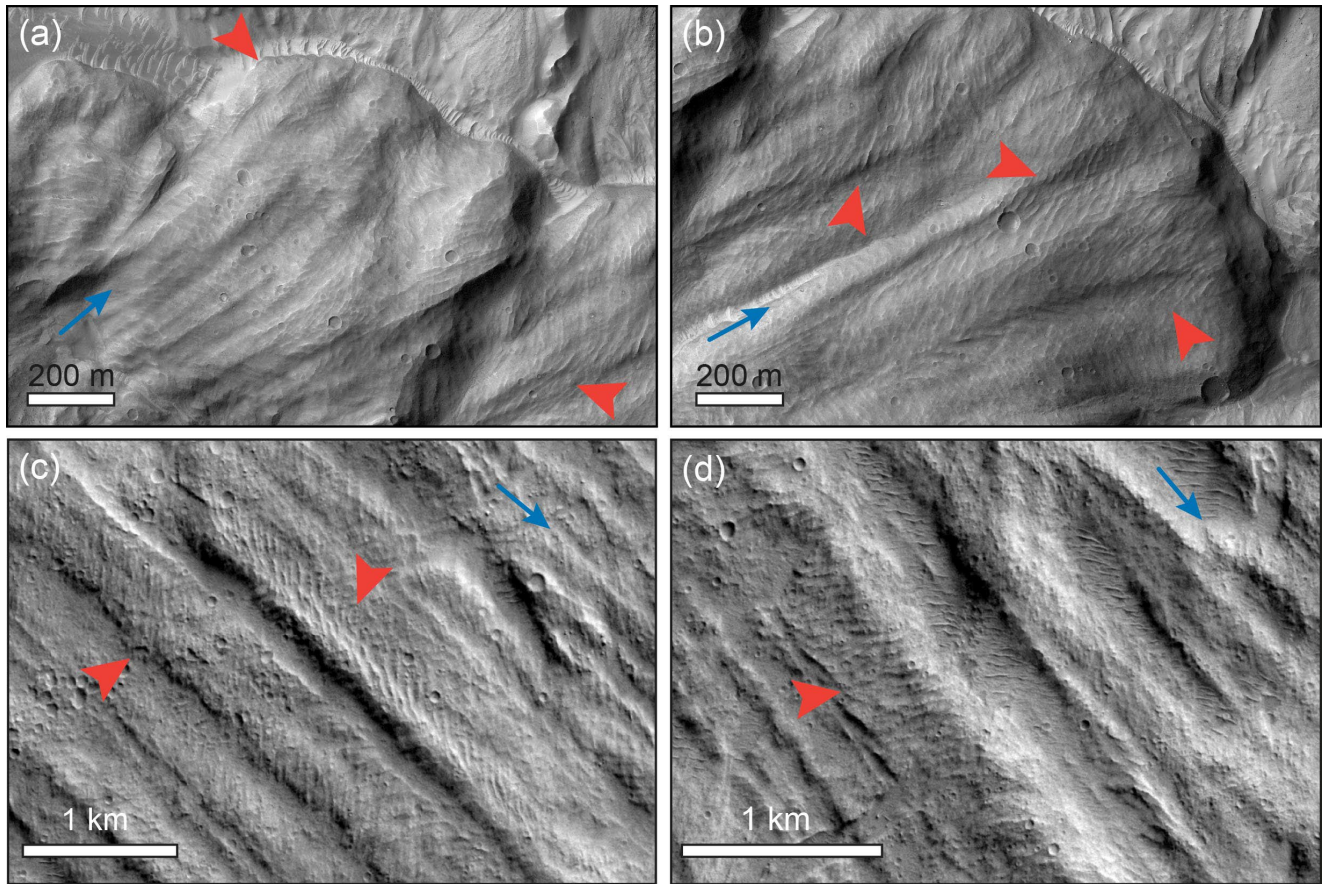


Figure 14: En-echelon structures found superposing longitudinal ridges in martian long runout landslides. Panels a) and b) show examples of linear structures superposed on longitudinal ridges in an 8-km-long landslide on Mars (HiRISE image: ESP_016778_1750). Panels c) and d) show examples from the 63-km-long Coprates Labes landslide deposit on Mars (CTX image: P20_008906_1685_XN_11S067W). In all panels, blue arrows show the direction of movement of the landslides; red arrowheads show locations where en-echelon linear structures are found superposing longitudinal ridges (note that these are examples and the structures are found ubiquitously on the deposits).

735