

Spatially coherent variability in modern orographic precipitation produces asymmetric paleoglacier extents in flowline models: Olympic Mountains, USA

5 Andrew A. Margason¹, Alison M. Anders², Robert J.C. Conrick³, and Gerard H. Roe⁴

¹Department of Geology, University of Illinois, Urbana, IL, 61801, USA; now at Ramboll 60606, USA

² Department of Geology, University of Illinois, Urbana, IL, 61801, USA

³Department of Atmospheric Sciences, University of Washington, Seattle, WA, 98195, USA

⁴Department of Earth and Space Sciences, University of Washington, Seattle, WA, 98195, USA

10

Correspondence to: Alison M. Anders (amanders@illinois.edu)

15

Abstract. Glaciers are sensitive to temporal climate variability. Glacier sensitivity to spatial variability in climate has been much less studied. The Olympic Mountains of Washington State, USA, experience a pronounced orographic precipitation gradient with modern annual precipitation ranging between ~~~6.5~~500 and ~~~0.5~~500 meters-mm water equivalent. In the Quinault valley, on the wet side of the range, a glacier extended onto the coastal plain reaching a maximum position during the early Wisconsin. ~~On the dry side of the range, in the Elwha Valley, Episode glaciation. In the dry lee, there here~~ is no evidence of a large paleoglacier during the Wisconsin. ~~in the Elwha valley.~~ We hypothesize that asymmetry in past glacier extent was driven by spatial variability in precipitation. To evaluate this hypothesis, we constrain the past precipitation gradient, and model glacier extent. We explore variability in observed and modelled precipitation gradients over timescales from 6 hours to ~100 years. Across three data sets, basin-averaged precipitation in the Elwha is 54% of that in the Quinault. Our analysis overwhelmingly indicates spatially coherent variability in precipitation across the peninsula. We conclude that the past precipitation gradient was likely similar to the modern gradient. We use a one-dimensional glacier flowline model, driven by sea-level summer temperature and annual precipitation to approximate glacier extent in the Quinault and Elwha basins. We find several equilibrium states for the Quinault glacier at the mapped maximum position within paleoclimate constraints for cooling and drying, relative to present-day conditions. Assuming stable precipitation gradients, we model Elwha glacier extent for the climates of these equilibria. At the warm end of the paleoclimate constraint (July average sea-level

20

25

30 [temperature of 10.5 °C](#)), a small valley glacier occurs in the high headwaters of the Elwha ~~valley~~Valley. Yet, for the cooler end of the allowable paleoclimate ([July average sea-level temperature of 7 °C](#)), the Elwha ~~glacier~~Glacier advances to a narrow notch in the valley, thickens, and rapidly extends far beyond the likely true maximum extent. Therefore, we suggest that the last glacial maximum climate was more likely to have been relatively warm [because our models of glacial extent are consistent with the past record of glaciation in both the Quinault Valley and Elwha Valley for warm conditions, but inconsistent for](#)

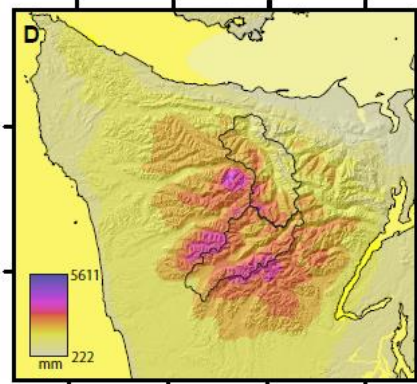
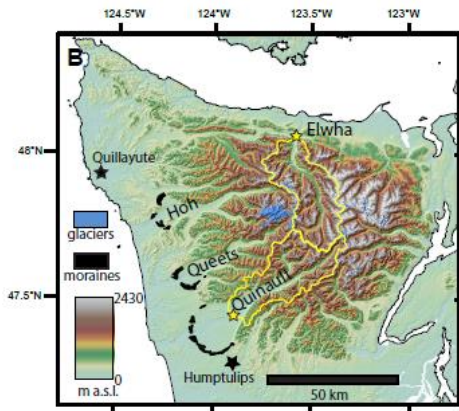
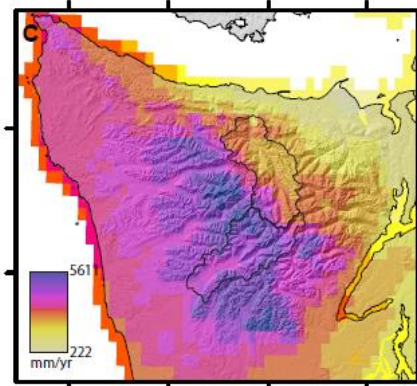
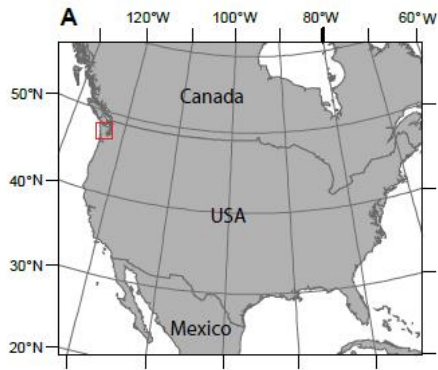
35 [cooler conditions](#). Alternatively, spatially variable drivers of ablation including differences in cloudiness could have contributed to [past](#) asymmetry in glacier extent. Future research to constrain past precipitation gradients and evaluate their impact on glacier dynamics is needed to better interpret the climatic significance of past glaciation and to predict future response of glaciers to climate change.

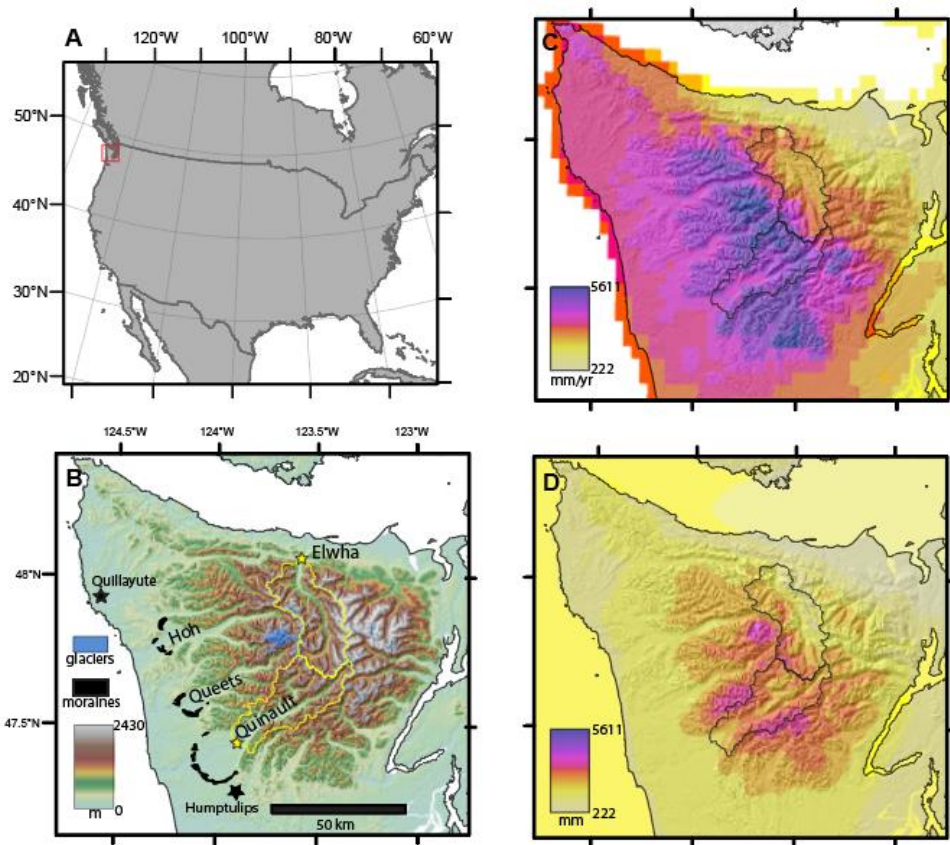
1 Introduction

40 Glaciers are sensitive indicators of climate change through time because glacier extent is dependent on climate variables including precipitation, temperature, insolation, and cloudiness (e.g., Braithwaite et al., 2003; Wagnon et al., 2003; Kessler et al., 2006; Rupper and Roe, 2008; Anders et al., 2010). The sensitivity of glaciers to climate has been used to interpret past changes and predict future changes in glacier extent as a response to, and record of, temporal changes in climate (Oerlemans et al., 1998; Roe, 2011). However, climate not only varies in time, but also in space. Spatial variability in

45 precipitation due to topographic forcing (i.e., a rain shadow) is a well-documented and generally well-understood example of a robust spatial gradient in climate (Roe, 2005). How does glacier extent vary across a mountain range with a significant rain shadow? We consider this question for the Olympic Mountains of Washington State, USA (Figure 1a [& b](#)). This mountain range on the Pacific northwest coast has small modern glaciers and evidence of extensive glaciation during the Pleistocene (Thackray, 2001). We begin by assessing the possibility of significant changes in rain-shadow strength during glacial

50 conditions relative to the present. Having established that spatial gradients in precipitation are likely a robust feature of the climate of the Olympic Mountains, we simulate the evolution of glaciers on the windward and leeward side of the range to examine the impact of the rain shadow on glacier extent.





55 Figure 1. Panel A: Location of the study area in Washington State, U.S.A. Panel B: Topography of the Olympic Peninsula. Terminal moraines of the west side valleys shown in black (Marshall, 2013; Staley, 2015). Radiosondes are routinely launched from the black star at Quillayute (Rutledge and Ciesielski, 2016). Humptulips (black star) is the location of the paleoclimate record we use. We define the Elwha and Quinalt basins (outlined in yellow) as the regions upstream of USGS stream gauges, shown as yellow stars. Panel C: Annual climatological precipitation from the PRISM model (Daly et al., 2008). Panel D: Total
60 modelled precipitation during the OLYMPEX campaign in the winter of 2015-2016 (Skamarock et al., 2008).

Modern precipitation across the Olympic Mountains is characterized by a steep precipitation gradient (e.g., Hobbs, 1978; Anders et al., 2007; Cao et al., 2018). Annual precipitation varies from ~6.500 meters-mm w.e. at high elevations on the western side of the range to ~0.500 meters-mm w.e. on the north-east lowlands (Figure 1b1c). On the Pacific coast, monthly precipitation totals during the drier warm season (May-September) vary from ~50-150 millimetres-mm per month. In contrast, average monthly totals exceed 400 millimetres-mm during November, December, and January (Minder et al., 2008). More than 80% of annual precipitation on the Olympic Peninsula falls between October and April (Cao et al., 2018). At elevations of at and above 1500 meters-m a.s.l. and above, snow accounts for 55 to 86% of water equivalent precipitation (Rasmussen et al., 2000; Baccus, 2018). Large cool-season precipitation totals are due to the range lying in the path of the wintertime midlatitude storm tracks extending from the Pacific Ocean which produce stratiform precipitation during stable lifting (Houze et al., 2017; Purnell and Kirshbaum, 2018). Winds from the west cause air to lift and cool upwind of the topography. Cloud droplets condense and coalesce to form falling hydrometeors that tend to reach the land surface on the windward side of the range, causing large precipitation totals at high elevations along the south-west side of the range. After passing over the crest of the Olympic Mountains, air descends and warms, causing evaporation of hydrometeors and cloud-water droplets. A significant fraction of the moisture has been removed from the air mass, leaving little potential for precipitation on the eastern side of the range (Zagrodnik et al., 2019).

The paleoclimate of the Olympic Mountains can be inferred through pollen data from a mire at Humptulips in the southwest of the Olympic Peninsula. The pollen data constrains past vegetation and climate approximately 30,000^{±4}C-yr-B.P35 ka. (Heusser et al., 1999). The ecosystem during the time of the pollen deposition is interpreted as a coastal tundra dominated by pines. SeaSummer sea-surface temperatures were more than 5 °C lower than present, with precipitation close to 1000 millimetres-per-yearmm yr⁻¹, as compared with approximately 3000 mm yr⁻¹millimetres-per-year-today at the Black Knob remote automated weather station, located about 30 km northwest of the Humptulips mire (Western Regional Climate Center, 2023). We use these paleoclimate estimates of temperature and drying (relative to the modern) as a constraint on the climates we simulate in our glacier models.

Formatted: Superscript

85 Large glaciers descended the western valleys multiple times during the early and middle Wisconsin glaciation ~40
kya. This ~~formed-contributed to erosion of~~ U-shaped valleys with steep walls and ~~formed~~ terminal moraines beyond the range
front on the coastal plains (Thackray 2001; ~~Dragovich et al., 2007~~; Marshall, 2013; Stacey, 2015). In contrast, there is no clear
evidence of alpine glaciation at low elevations in the Elwha ~~valley-Valley~~ on the leeward side of the Olympic Mountains. Surficial
geologic mapping approximately 60 km below the headwaters of the basin, did not recognize alpine till from an Elwha ~~valley~~
90 ~~Valley glacier-Glacier~~ (Polenz et al., 2004). Therefore, alpine ice in the Elwha ~~valley-Valley~~ was most likely quite restricted
relative to the west-side valleys (Hoh, Queets, Quinault). During the most recent glaciation, continental ice of the Puget Lobe
of the Cordilleran Ice Sheet advanced into the Strait of Juan de Fuca 17-14 kya ~~B.P.~~ damming the mouth of the Elwha
~~basin-Valley~~ (Easterbrook, 1986; Duda et al., 2011). This event could have obscured the geomorphic and surficial geologic
record of earlier extensive alpine glaciation of the Elwha ~~valley-Valley~~, allowing for some possibility of unrecognized extensive
95 alpine glaciation in the basin.

Modern glaciers and perennial snowfields in the Elwha and Quinault ~~basins-Valleys~~ are small, with total areas of
~2km² in the Elwha ~~basin-Valley~~ and of < 1 km² in the Quinault ~~Valley~~, spread over a few tens of small ice bodies (Riedel et
al., 2015; Fountain et al., 2022, GLIMS Glacier Database, ~~2023~~, <https://doi.org/10.7265/N5V98602-4/15/23>). The largest
glacier in the Quinault ~~basin-Valley~~ was ~0.4 km² in 2017 (GLIMS Glacier Database, ~~2023~~). In the Elwha ~~valley-Valley~~, the
100 largest glaciers (the Carrie Glacier ~0.4 km² as of 2017 and the Fairchild Glacier ~0.25 km² as of 2017) are hosted on the north
and east sides of Mt. Carrie in the Bailey Range, about 30 km north of the headwaters and along the western edge of the ~~basin~~
~~Elwha Valley~~ (GLIMS Glacier Database, ~~2023~~). Very small glaciers such as these are strongly influenced by local topographic
and climatic conditions that favour enhanced mass addition by wind redistribution or decreased melt due to topographic
shielding (DeBeer and Sharp, 2009; Fountain et al., 2022). The modern glaciers in these valleys are situated in positions that
105 receive greater than average precipitation, ~~namely, in the headwaters of the Quinault valley and along the western edge of the~~
~~Elwha basin~~. Glaciers in the Olympic Mountains are generally shrinking, with a loss of about half of glacier area between 1900
and 2015 (Fountain et al., 2022). Glacier loss is attributed to warming winter temperatures and increasing dominance of rain
instead of snow (Fountain et al., 2022).

Formatted: Superscript

Formatted: Superscript

The tectonic setting of the Olympic Mountains is an accretionary prism at a convergent plate boundary. The oceanic
110 Juan de Fuca plate is subducting below the continental North American Plate. Sediments once deposited on the ocean floor or
in the subduction trench of the Juan de Fuca plate accumulated and were deformed during subduction into a thick wedge
known as an accretionary prism (Tabor and Cady, 1978). The Olympic Mountains are the emergent portion of this accretionary
prism. Subduction and deformation of the accretionary prism is ongoing. Thermochronology suggests that the rate and pattern
of rock uplift in the Olympic Mountains has been consistent since ca. 14 Ma and has an average uplift rate of $\sim 0.28 \text{ km Myr}^{-1}$
115 (Brandon et al., 1998). Exhumation of the Olympic Mountains varies in space from approximately zero at the coast to $\sim 0.9 \text{ km}$
 Myr^{-1} in the core of the range, in a bullseye pattern (Michel et al., 2018).

The Olympic Mountains are hypothesized to be in both a flux steady-state and a topographic steady-state because
rates and spatial patterns of erosion appear to match long-term rock-uplift rates (Pazzaglia and Brandon, 2001). Specifically,
a flux steady-state requires that the material flux into the range (uplift) is balanced by a material flux out of the range
120 (exhumation) so that the volume of the range is fixed in time (e.g., Willett, 1999; Adams and Ehlers, 2018). A topographic
steady-state is more restrictive and requires that the average cross-sectional shape of the range, and therefore average
topographic cross-section is also fixed in time. The evidence for a topographic steady-state comes from the close
correspondence of fluvial incision rates inferred from river terraces on the west side of the Olympics in the Clearwater Valley.
~~Fluvial terrace incision rates agree~~ with long-term exhumation rates derived from fission-track apatite ages in the same region
125 (Pazzaglia and Brandon, 2001). The matching rates and spatial patterns of erosion at the timescale of tens-of-thousands of
years with exhumation at the timescale of a few-million years supports the hypothesis that the topography has remained
consistent as material moved through the accretionary prism. However, fluvial processes have not been the rule in the past
million years. The Clearwater River is in the only substantial valley on the west-side that was not glaciated during the
Wisconsin ~~Episode~~, and therefore did not experience conditions typical of the range for the last several tens-of-thousands of
130 years. A greater understanding of glacier extent and erosion could provide additional data to test the hypothesis of topographic
steady-state.

To summarize, there is a well-documented modern climate gradient across the Olympic Peninsula and there is also
good evidence for asymmetry in the past glacier extent with large glaciers present on the windward side of the range but not

on the lee side during the ~~last glacial episode~~ most recent glaciation. We hypothesize that past spatial variability in precipitation
135 was similar to the modern and controlled past glacier extent. This points us to two questions. First, was the spatial variability
of precipitation in the past analogous to the modern variability? Second, does the precipitation gradient explain the asymmetry
in glacial extent on either side of the mountain range? To answer these questions, we analyse the modern climate across short-
and long-term time scales to see how variable the modern precipitation gradient is. We use this analysis of modern variability
to assess the likelihood of substantially different past precipitation gradients. After establishing the likely strength of the past
140 precipitation gradient, we use a 1-D flowline model to predict the extent of glaciation in the Quinault and ~~the~~ Elwha Valleys.

2 Spatial Variability in Precipitation

2.1 Methods

We characterize the spatial variability in precipitation across the Olympic Peninsula ~~through-by~~ comparing the
amounts of precipitation in the Quinault and Elwha basins. We define a rain shadow index (R) in Eq (1):

$$R = \frac{P_e}{P_q} \quad (1)$$

where P_e is the spatially averaged precipitation rate in the Elwha basin and P_q is the spatially averaged precipitation rate in
the Quinault basin. We compute R over different timescales using three datasets: climatologies based on spatial interpolation
150 of 30_-years of observations, annual-precipitation totals inferred from 100 years of river-discharge measurements, and 6-hour
modelled precipitation outputs from a numerical weather-forecast model (the Weather Research and Forecasting, WRF,
model).

By examining the variability of the rain shadow in time, we can compare it to factors that might influence the
precipitation processes in this region. Specifically, we compare 6-hour measures of R with wind speed, wind direction,
155 temperature, and atmospheric stability across different precipitation events to assess the extent to which different types of
precipitation events (e.g., cold vs. warm fronts) exhibit different characteristic rain-shadow strengths. At the annual timescale,
we compare the annual timeseries of R derived from river discharge with climate indexes to see if a strong or weak rain-shadow

correlates with different regional climate states. Overall, our goal is to constrain the variability in the rain shadow over long and short timescales in the modern climate to understand causes of particularly strong and weak rain shadows. We leverage
160 this data to constrain the rain-shadow strength during periods of intense glaciation of the Olympic Mountains.

2.1.1 Rain-shadow strength derived from spatially interpolated climatologies

The Parameter-elevation Regression on Independent Slopes Model (PRISM) uses observations from atmospheric monitoring sites to interpolate climate variables across the United States (Daly et al., 2008). The model divides terrain into
165 topographic facets defined by slope and elevation. We use PRISM at a 4-km resolution normalized over a 30-year period from 1981 to 2010 (Figure 4b1c). We average the PRISM estimate of precipitation across each basin to calculate P_e and P_q and define a rain-shadow index, R_{PRISM} , as the ratio of the P_e and P_q .

2.1.2 Rain-shadow strength derived from weather-forecast models

We use archived Weather Research Forecasting (WRF; Skamarock et al., 2008) from the Olympic Mountains
170 Experiment (OLYMPEX; Houze et al., 2017) to estimate the strength of the rain shadow at short timescales (Figure 4e1d). OLYMPEX was a meteorological field campaign in the winter of 2015 - 2016 designed to validate Global Precipitation Measurements (GPM) satellites and investigate Pacific midlatitude storms as they travel over the Olympic Mountains (Houze et al., 2017). The WRF model was initialized using meteorological fields from the Global Forecast System and was run during
175 the OLYMPEX campaign (November 1st, 2015 to February 1, 2016). WRF parametrization and model setup are as described in Conrick and Mass (2019a, 2019b).

We evaluate the variable RAINNC which is the cumulative total accumulation of ice and liquid precipitation at the ground surface since the start of the model run. Specifically, 24-hour long simulations at 1.33_km resolution were initialized at 00 and 12 UTC daily, with model output saved every 6 hours. We create a time series of precipitation based on accumulation
180 during the first 12 hours of each model run. The first saved value of RAINNC provides a record of the 6-hr accumulated precipitation during the first 6 hours. To get accumulated precipitation during the second 6 hours of each model run we subtract

the value of RAINNC recorded after 12 model hours from the value recorded after 6 model hours. We treat this time series as precipitation data without attempting to quantify model errors. We define a rain-shadow index, R_{WRF} , as the ratio of the spatially averaged WRF output for each basin (P_e and P_q). We calculate an R_{WRF} for the whole accumulated precipitation during the OLYMPEX campaign. In order to characterize its variability in time, we also calculated R_{WRF} for every six-hour period for which P_e and P_q both exceeded 5 mm.

The time series of 6-hour R_{WRF} is compared to wind speed, wind direction, and temperature measurements collected by weather-balloon radiosondes during the OLYMPEX campaign with the goal of identifying relationships between rain-shadow strength and atmospheric conditions. Radiosonde data were taken at KUIL, located in Quillayute, WA (Figure 1b). ~~KUIL, located in Quillayute, WA had~~ There were 162 soundings from October 29, 2015 to January 16, 2016. Data collected there was used to investigate relationships between rain-shadow strength and atmospheric conditions. Soundings were collected at variable heights, and we interpolated these to a defined spacing of 250 ~~meters~~ using linear interpolation. We averaged temperature, wind speed, and wind direction over an arbitrary ~~one-kilometre~~ 1 km vertical distance near the surface from 750 to 1750 ~~meters-m~~ for each sounding. These average values were interpolated from the times of observation to 6-hour time intervals of the WRF model using linear interpolation.

2.1.3 Rain-shadow strength derived from river-discharge records

River-discharge data collected at gauges in the Quinault and Elwha rivers (Figure 1b) were obtained from the USGS (<https://waterdata.usgs.gov/2022a> and [2022b](https://waterdata.usgs.gov/2022b)). Discharge data was given as monthly averages measured in cubic feet per second. Complete data from both basins was available from 1919 to 2019. We use river-discharge data to approximate the rain-shadow strength at two timescales: the entire period of record and each water year (October to September). The choice to evaluate R_{GAUGE} in a water year was made to account for the delayed melting of winter snowpack influencing stream discharge at long timescales relative to precipitation events. We define E_{run} as the total runoff (i.e., discharge) divided by the area of the Elwha basin, and report the result in mm to compare with our precipitation estimates. Q_{run} is the same metric for the Quinault basin. We then have a gauge-based estimate of the rain-shadow index:

$$R_{GAUGE} = \frac{E_{run}}{Q_{run}} \quad (2)$$

For each of the 101 water years in the record we calculate water-year averages of E_{run} , Q_{run} , and R_{GAUGE} .

We compared E_{run} , Q_{run} , and R_{gauge} to climate indices. Monthly climate indices came from Climate Explorer (<https://climexp.knmi.nl>) and characterize recurring patterns of atmospheric circulation. These patterns influence the formation of mid-latitude storms and are also associated with significant temperature anomalies (e.g., Robertson and Metz, 1990; Michelangeli et al., 1995). Siler et al. (2012) found significant interannual variability in the strength of the rain-shadow correlated with ENSO in Washington State's Cascade Mountains, to the east of our study area. Specifically, they found a significant correlation of a weaker wintertime rain shadow during El Niño conditions and a stronger rain shadow during La Niña conditions (Siler et al., 2012). The indices used here are derived from measurements of interannual sea-surface temperatures in the Pacific Ocean. We included four indices: the El-Niño Southern Oscillation ([2022Niño-3.4](#); available from 1854-2021); the Pacific Decadal Oscillation ([2022PDO](#); available from 1900-2021); the Pacific North American ~~Index~~ [Pattern](#) ([2022PNA](#); available from 1950-2020); and the Tropical/Northern Hemisphere [Pattern](#) ([2022FNH](#); available from 1950-2020). Each index was included because of its influence on the Northern-Hemisphere extratropics and the Pacific Northwest in particular. (Barnston and Livezey, 1987). These indices were averaged over December, January, and February (DJF) which is the period of greatest snowpack accumulation (Serreze et al., 1999; Robertson and Ghil, 1999). We normalize the time series of E_{run} , Q_{run} , and R_{GAUGE} by their standard deviations and calculate Pearson's correlation coefficients (r) between these time series.

2.2 Rain-Shadow Results

2.2.1 Long-term measurements of rain-shadow strength

The PRISM climatology (Figure [4b1c](#)) yields $R_{PRISM} = 0.54$ (Table 1), or approximately 85% more precipitation in the Quinault [basin](#) ~~Basin~~ than the Elwha. We expect that there are significant local uncertainties in the PRISM climatology as

it depends on the quality and spatial density of gauges used in the regression (Cao et al., 2018). The PRISM climatology across the ~3700 km² Olympic Peninsula is derived using data from 37 weather stations, and only 3 sites of the 37 stations have an elevation above 500 meters. Conversely, in the Coweeta ~~basin-Basin~~ of the southern Appalachian Mountains, local annual-mean errors in PRISM errors estimated at 16%, given 25 observation stations within the ~20 km² basin (Daly et al., 2017). In comparison, the lack of measurements of precipitation, especially at high elevations, in the Olympic Mountains suggests that there could be a higher amount of uncertainty of the PRISM climatology compared to the 16% error of that of the Coweeta ~~basin-Basin~~. Specifically, the lack of gauges in the Elwha headwaters means that PRISM does not measure spillover precipitation that crosses the divide to fall in the upper Elwha ~~basin-Basin~~.

Table 1. Measures of R from PRISM, river discharge, and WRF datasets.

Measure of R	Source	R (Standard Deviation)	Period of Record
R_{PRISM}	PRISM	0.54	30-year climatology (1981 - 2010)
R_{GAUGE}	USGS River Discharge	0.54	1919 – 2019
		0.54 (0.14)	Individual water years
R_{WRF}	OLYMPEX WRF- ARW	0.72	OLYMPEX campaign 11/01/2015 - 02/01/2016
		0.80 (0.36)	6-hour periods with precipitation

Table 1. Measures of R from PRISM, river discharge, and WRF datasets.

R_{WRF} for the entire OLYMPEX campaign equals 0.72 (Table 1; Eq. (3), Figure 2). An R closer to one means precipitation is more similar in the Quinault and Elwha. WRF forecasts predicted significantly larger amounts of spillover precipitation in the Elwha ~~basin-Basin~~ than the PRISM normal. However, the WRF forecasts are imperfect: WRF

underestimated precipitation by up to 100 mm at OLYMPEX gauge locations around the Quinault ~~basin~~-Basin during larger storms (Conrick and Mass, 2019^{ba}). Additionally, the OLYMPEX campaign only studied a single wet season which may not
250 have been representative of longer-term average precipitation.

A 101-year river discharge of the Elwha and Quinault ~~basins~~-Basins yielded $R_{GAUGE} = 0.54$ (Eq.5, Table 1), which is in agreement with R_{PRISM} . Uncertainty in discharge measurements and hence R_{GAUGE} can stem from several sources. For example, there is uncertainty in the measurements of the cross-sectional area of the flow and in the stage-discharge relationship. Additionally, river discharge represents water flowing off the land surface, neglecting the possibility of evapotranspiration of
255 precipitation. This could result in an underestimation of the actual amount of precipitation that contributes to the river discharge measurements. The cool, wet climate of the Olympic Peninsula makes this error likely to be relatively small, but there could be systematic differences between the Quinault and Elwha in the conversion of precipitation to river discharge.

2.2.1 Temporal variability in rain-shadow strength

In addition to the average rain-shadow indices estimated using these three independent data sets, we also considered
260 the variability in rain shadow index at timescales of hours and seasons. The six-hourly R_{WRF} -values have a mean of 0.80 and standard deviation of 0.36 (Table 1). The mean rain-shadow index measured in this way is larger than the OLYMPEX-total R_{WRF} (=0.72), meaning that the 6-hourly forecast precipitation is more uniform across the mountain range than other data sets. We note that at a 6-hour resolution it is possible that the measured rain-shadow index could reflect differences in timing of
265 precipitation in the two basins. For example, if the heaviest precipitation in the Elwha occurs after it happens in the Quinault, then, the rain shadow index might be larger in one 6-hour period and smaller in the subsequent 6-hour period with neither measure reflecting the storm event. Therefore, we averaged WRF forecasts over longer time periods to produce time series of R over a range of timescales. Over longer time periods, the mean value for R and the standard deviation of R gets smaller up to 48-hours (Table 2). For the longest time period examined, 72-hours, the standard deviation increases relative to 48-hours,
270 possibly reflecting less coherence in conditions at these longest timescales. For all timescales examined, however, R derived from WRF forecasts during OLYMPEX is larger than in other data sets. The larger R may reflect a tendency of WRF to

overpredict spillover precipitation in the Elwha ~~basin~~Basin. However, we do not have sufficient data to conclude that this is necessarily the case. Moreover, PRISM is not informed by data collected near the drainage divide and so is not necessarily reliable. Similarly, R estimated from differences in river discharge is complicated by the existence of difference in evapotranspiration between the basins, if this is the case. Finally, it is possible that the OLYMPEX period was anomalous compared with longer-term records.

Table 2. Mean and standard deviation of R_{WRF} at different time intervals for accumulated precipitation.

Time period of measurement	R (Standard Deviation)
6-hours	0.80 (0.36)
12-hours	0.76 (0.30)
24-hours	0.74 (0.31)
48-hours	0.75 (0.26)
72-hours	0.76 (0.33)

~~Table 2. Mean and standard deviation of R_{WRF} at different time intervals for accumulated precipitation.~~

What causes the time variability of the 6-hourly R_{WRF} ? Figure 2 compares the 6-hourly R_{WRF} to the average amount of precipitation. It shows that the rain-shadow strength for large events is less variable than for all rain events. Specifically, 6-hour periods with average precipitation totals above 20 mm tend to cluster at R values between 0.5 and 1.0, indicating that higher values of 6-hourly R_{WRF} are generally associated with lighter precipitation.

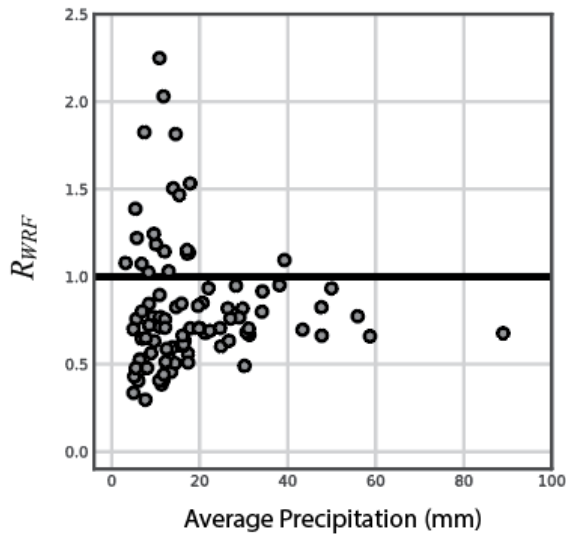
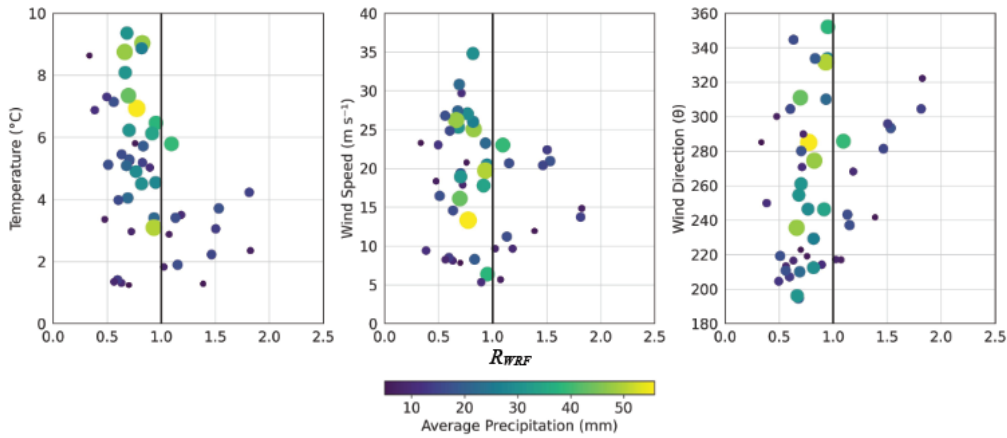
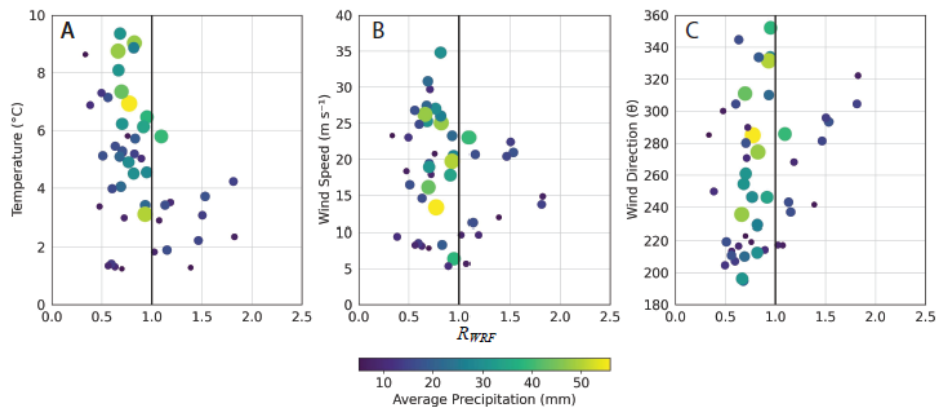


Figure 2. R_{WRF} measured at 6-hour intervals varies with the total precipitation averaged over the two basins. As average precipitation increases, R_{WRF} becomes less variable.

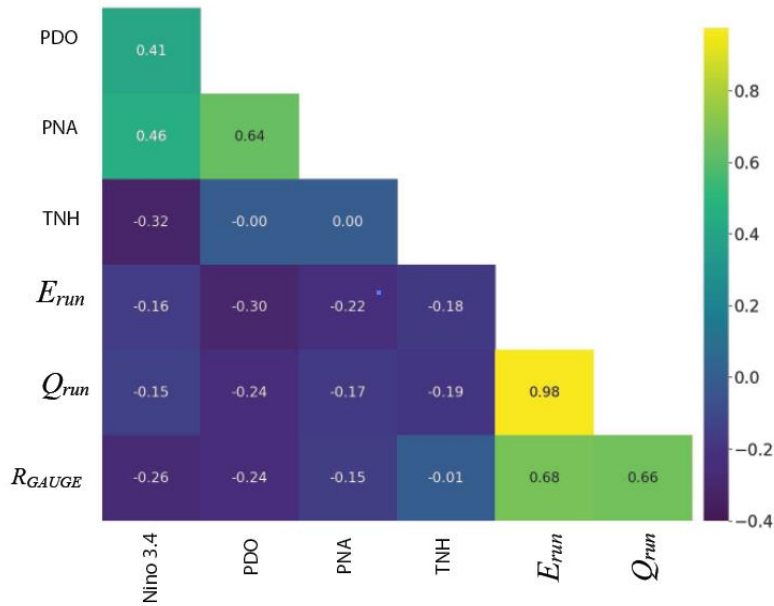
We analysed the time series of 6-hourly R_{WRF} to examine the relationships between R magnitude and temperature, wind speed, and wind direction (as measured by atmospheric soundings) (Figure 3). The time series can be divided into groups of low (0.34-0.69), moderate (0.70-0.99), and high (1.0-2.5) R. High R values (greater than one) were commonly observed during colder weather conditions (Figure 3a). On the other hand, lower R values were associated with higher temperatures. High R events had lower magnitude precipitation compared to moderate R events, with rates of approximately 14 millimeters per 6-hour interval and 26 millimeters per 6-hour interval, respectively. The wind speed during cold, high-R events was lower compared to low- and moderate-R events (Figure 3b), while wind direction showed no significant pattern among the different R groups (Figure 3c). In general, the temporal variability of R_{WRF} suggests that colder conditions and

300 slower winds lead to lower magnitude and more uniform precipitation, while warmer and windier conditions are linked to R values close to the long-term average. Small magnitude precipitation events with R values below 0.5 occurred during warm and windy conditions.



305 *Figure 3. The relationship between R_{WRF} at 6-hour resolution, and ~~various~~ atmospheric variables as measured by the KUIL radiosonde. Panel A shows average temperature between 750 and 1750 m a.s.l. Panel B shows average windspeed over the same elevation range. Panel C shows average wind direction in the same elevation range. The size and colour of the data points correspond to the average precipitation across both basins.*

310 We used discharge records to examine differences in rain-shadow strength in different water years. The annual time series of R_{GAUGE} has a mean value of 0.54, with a standard deviation of 0.14 (Table 1). We compared the time series of R_{GAUGE} , E_{run} , and Q_{run} to climate indices to determine if temporal variability in R is correlated with specific climate patterns, for example, La Niña vs. El Niño. Instead, we find that there is a remarkably consistent relationship between Q_{run} and E_{run} ($r = 0.98$) and the climate indices do not strongly correlate with E_{run} , Q_{run} or R_{GAUGE} . (Figure 4). Our analysis demonstrates that
315 river discharge varies synchronously on the windward and leeward sides of the mountain range. This suggests that topography, and possibly differences in evapotranspiration, strongly influence the rain shadow strength at the timescale of entire wet seasons.



320

Figure 4. A correlation heat map displaying the relationship between ~~various~~ climate indices for the El-Nino Southern Oscillation (Nino 3.4), the Pacific Decadal Oscillation (PDO), the Pacific North American Index (PNA), and the Tropical/Northern Hemisphere Index (TNH) and E_{run} , Q_{run} ~~or~~ and R_{GAUGE} . E_{run} and Q_{run} are highly correlated with each other and R_{GAUGE} is not correlated with climate indices.

325

2.3 Inferences for reconstruction of past climate

Three independent data sets give us R of ~ 0.5 to ~ 0.7 with less variability in R at longer timescales. At the shortest timescales examined (6-hours), the largest deviations in R are values larger than 1 occurring during periods of cold, slow windspeeds, and light-precipitation. There is no example of a large precipitation event with R much less than 0.5 during the

330 OLYMPEX campaign. At the timescale of water years, R is uncorrelated with regional climate indices and river discharge varies synchronously between the Quinault and Elwha basins. The lack of variability in R at the water-year timescale, the lack of correlation of R with climate indices, and the small number and magnitude of low R events at the 6-hour time scale all suggest that a conservative minimum estimate of R in the Olympic Mountains during the last glacial period is 0.5. The most likely difference between the modern and glacial climate suggested by our data would be an increase in R (i.e., a more uniform climate) due to cooler conditions (Figure 3). We proceed, therefore, to explore how the current rain-shadow strength would have impacted glacier dynamics on the Olympic Peninsula.

3. Modelled Glacier Extent in the Quinault and Elwha basins

3.1 Glacier Flowline Model Methods

We use a flowline model based on that of Oerlemans (1997) adapted from Roe and O'Neal (2009) to approximate the dynamics of glaciers in the Quinault and Elwha ~~basins~~Valleys. The model is one-dimensional but ~~considers~~includes the effect of changes in valley width in considering mass conservation along the flowline. We follow the work of Roe and O'Neal (2009) by calculating the mass balance along the flowline as a function of precipitation and temperature, instead of imposing a specified vertical mass-balance gradient. Inputs to the model include valley geometry, initial ice thickness, sea-level temperature, atmospheric lapse rate, and precipitation rate. The horizontal grid spacing in the model is 500 m.

345 Valley geometry is idealized as a long profile with a valley floor of defined width and valley sidewalls sloping outward at a fixed angle above the valley floor. The Quinault and Elwha ~~basins~~Valleys have different morphology and hypsometry (Figure 5) which is likely to affect glacier dynamics. For simplicity, the geometry of each ~~basin~~valley was idealized using three segments with uniform width and valley angles for each segment with the valley-floor elevation defined by the elevation of the lowest part of the valley extracted from a 30m digital elevation model (Table 3). We make no attempt to remove glacial and post-glacial sediment from the valleys before extracting the long profile. Where the valleys are wide, the valley side walls are assumed to be vertical. Within narrow sections we define the angle at which valley walls slope outward. Both valleys start with a wide contributing area in the high headwaters. In the middle of each basin, there is a narrow notch. Below the notches,

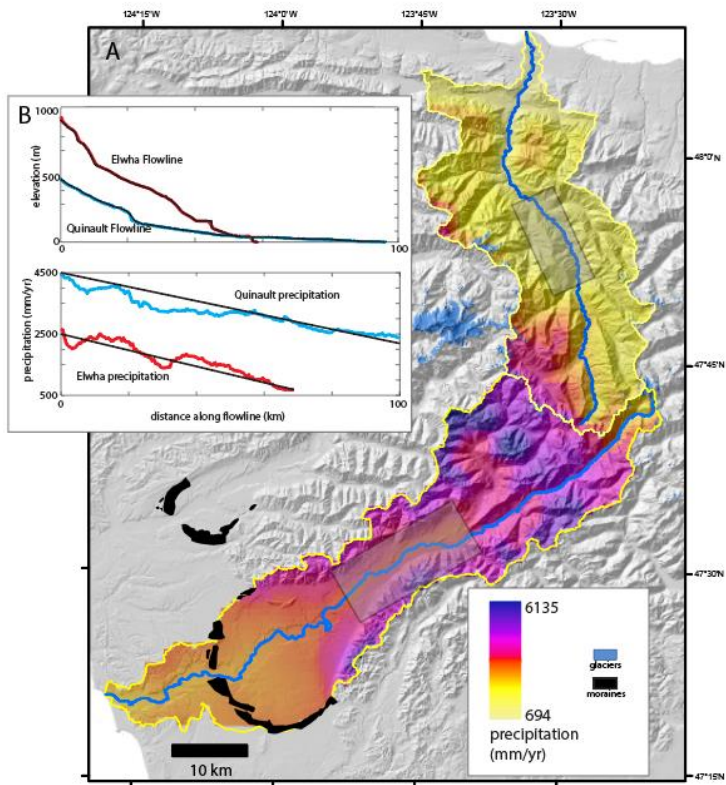
the basins open into expansive coastal plains. Basin widths were chosen to approximate upstream area accumulation along the long profile.

355

Table 3: Elwha and Quinault Valley geometry parameterization for the one-dimensional flowline model.

Basin-Valley Segment	Elevation Range (m a.s.l.)	Valley Width (km)	Valley sidewall angle (°)
Upper Quinault	500-115	16.0	0 (vertical)
Middle Quinault	115-60	2.5	60
Lower Quinault	60-0	18	0
Upper Elwha	1600-450	11.4	0
Middle Elwha	450-70	5.2	50
Lower Elwha	70-0	15.0	0

360 *Table 3: Elwha and Quinault valley geometry parameterization for the one-dimensional flowline model.*



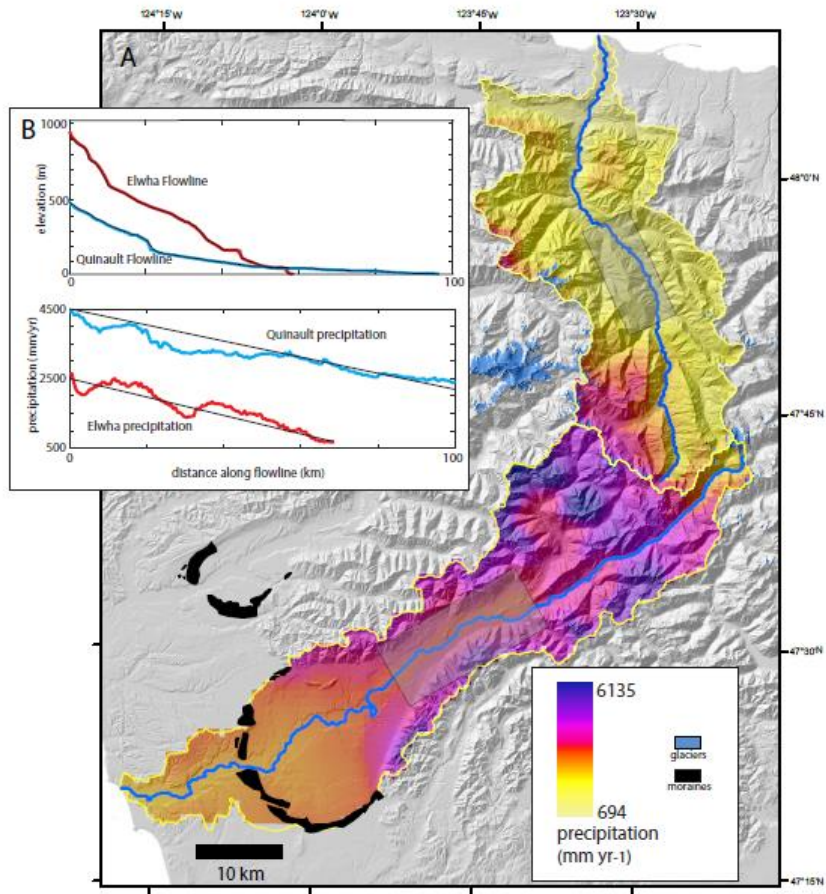


Figure 5: Panel A shows the Quinault and Elwha *basins-Valleys* with topography represented as a grey hillshade and the 30-year climatological annual precipitation in mm yr⁻¹ shown by the colour bar. Blue lines trace the path of the flowlines modelled.

365 Grey-shaded boxes are regions where the valleys narrow. Modern glaciers are indicated by blue shading and last glacial maximum moraines are in black. Panel B shows the elevation and precipitation along the flowlines with the coloured lines

showing the data from the digital elevation model (DEM) and PRISM model (2020) and the black lines showing the approximate values used in our model.

370 Mass balance of the glacier varies along its length as a function of spatially variable precipitation and summer mean temperature. Summer temperature (T) varies along the length of the flowline (x), and is a function of elevation of the ice surface and an imposed sea-level temperature, T_{SL} :

$$T(x) = T_{SL} + \gamma(zb(x) + h(x)) \quad (3)$$

375 where γ is the atmospheric lapse rate, here chosen as $-8.5e-3 \text{ km}^{-1}$, $zb(x)$ is the elevation of the bed and $h(x)$ is the thickness of the ice. Precipitation decreases down valley in both basins and is generally lower in the Elwha basin (Figure 5). We idealize this variability by setting a precipitation rate at the top of the basin and imposing a fixed fractional decrease in precipitation from the top to the bottom of each valley. For the Elwha we assume precipitation at the valley mouth is 27% of that of the valley top. For the Quinault, we assume precipitation at the valley mouth is 44% of that at the valley top. These fractions were
380 chosen to approximate the modern spatial pattern in precipitation (Figure 5). To simulate a glacial climate, we make the climate drier than modern by imposing a glacial drying factor (GDF) less than 1. The idealized modern precipitation gradient is multiplied by the GDF to model a drier climate that maintains the down-valley precipitation gradient observed today. We compare modelled glaciation of the Elwha and Quinault basins with the same T_{SL} and GDF to assess the response of the
385 different basins to the same climate forcing.

Modelled temperature and precipitation are used to calculate mass balance along the flowline. Precipitation is assumed to be adding mass throughout time and across the entire glacier surface. Temperature dependent melting is assumed to be the only loss of mass and is calculated as:

$$390 \quad melt(x) = maximum(0, \mu T(x)) \quad (4)$$

where μ is a constant melt factor set to $0.65 \text{ m yr}^{-1}\text{C}^{-1}$ following Roe and O'Neal's (2017,2009) work on Mount Baker in the neighbouring Cascade Mountains. From this we calculate a spatially variable mass balance, $b(x)$ in m yr^{-1} , as:

395
$$b(x) = P(x) - \text{melt}(x) \quad (5)$$

With mass balance calculated, we follow the method of Oerlemans (1997) as implemented by Roe and O'Neal (2009)) and Stuart-Smith et al. (2021) to solve the nonlinear diffusion equation governing the height of the ice over time. We choose a fixed value of $1.9\text{e-}24 \text{ Pa}^{-3} \text{ s}^{-1}$ as the parameter controlling internal deformation and $5.7\text{e-}20 \text{ Pa}^{-3} \text{ m}^2 \text{ s}^{-1}$ as the sliding parameter, based on values used in Oerlemans (1997) based on Budd et al. (1979). The model requires ice to be present at the beginning of simulations. Therefore, we start with glaciers of the expected scale and use a large glacier near the terminal moraine for the initial condition for the Quinault basin-Valley and use a small initial glacier limited to the headwaters in the Elwha basin-Valley. The model is implemented in Matlab and the model code and basin geometry input files are publicly available at <https://doi.org/10.4311/hs/www-hydroshare.org/resource/a908fe06d4784684b68452d21efae69b/>.

405

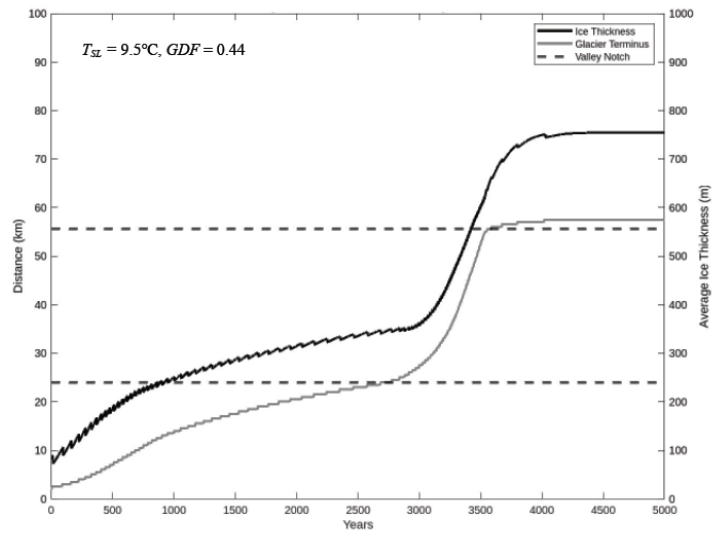
3.2 Results of glacier flowline modelling

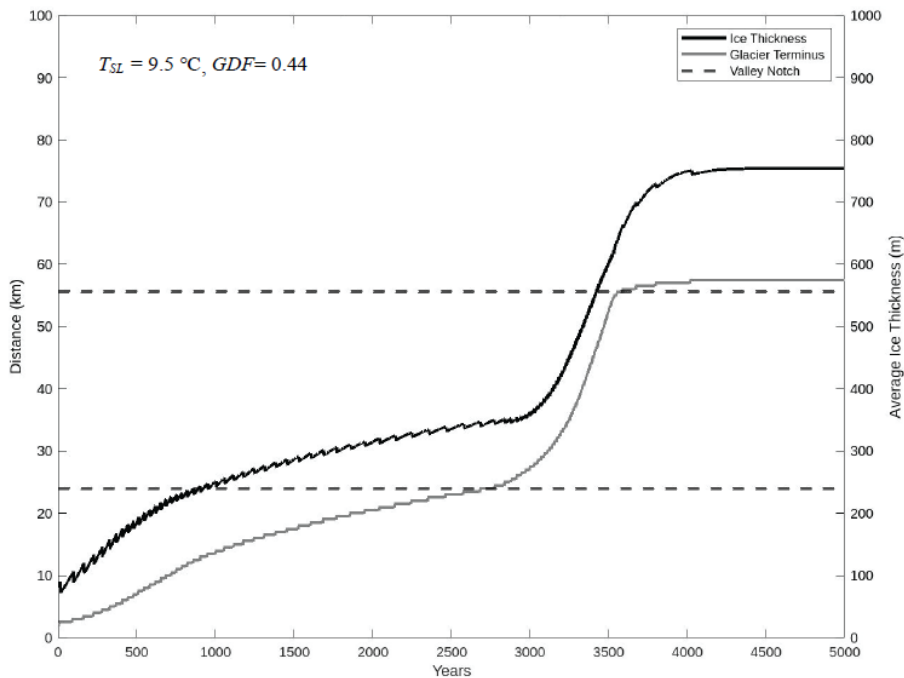
We begin by finding the range of climate conditions that produce a modelled Quinault glacier-Glacier in equilibrium at the observed last glacial-early Wisconsin maximum extent (Figure 1a1b). Using a trial-and-error approach, we identify pairs of T_{SL} and glacial drying factor (GDF) that produce an equilibrium glacier at the terminal moraine. T_{SL} and GDF linearly trade off ($GDF = 0.10 T_{SL} - 0.55$) within the range of sea level temperatures between 7 and $11 \text{ }^\circ\text{C}$ supported by paleoclimate reconstructions (Heusser et al., 1999). For a chosen value of T_{SL} , we can find the percentage of precipitation (GDF) that forces the glacier to stay in equilibrium near its terminal moraines over a 5,000-year period. Encouragingly, the corresponding GDF values ($\sim 0.15\text{-}0.55$) are similar to the required drying of at least 0.33 implied by the paleoclimate record.

415 Having found equilibria for the Quinault glacier-Glacier, we use the same climate T_{SL} and GDF pairs to simulate the evolution of the Elwha glacier-Glacier. Pairs of climate variables that produced nearly identical equilibrium glaciers in the Quinault led to enormously different glaciers in the Elwha basin-Valley. At the hotter end of the climate range at $10.5 \text{ }^\circ\text{C}$ the

Field Code Changed

Elwha ~~glacier~~ Glacier reaches a steady state with a high-elevation terminus consistent with the most likely true behaviour of the Elwha ~~glacier~~ Glacier during the most-recent glaciation. However, for a cooler climate at 9.5°C the Elwha ~~glacier~~ Glacier advances far down valley onto the coastal plain (Figure 6). The Elwha ~~glacier~~ Glacier advances from the headwaters into the narrower portion of the valley about 25 km from the divide. The glacier thickens due to the abrupt change in cross-sectional area. The thickening causes the surface of the ice to be at higher elevations. This increases the accumulation area of the glacier. A larger accumulation area causes glacier growth and further increases in glacier elevation. The sensitivity of the feedback loop between ice elevation and glacier growth to climate conditions is pronounced for the Elwha ~~glacier~~ Glacier, despite the range of climate conditions being similar to those that result in little change to the Quinault ~~glacier~~ Glacier. As a result, even slight alterations in climate conditions can produce significant contrasts in the behaviour of the Elwha ~~glacier~~ Glacier in comparison to the Quinault ~~glacier~~ Glacier





430

Figure 6. The temporal evolution of the Elwha ~~glacier~~ Glacier terminus and ice thickness for $T_{SL} = 9.5\text{ }^{\circ}\text{C}$ and $GDF = 0.44$. These climate factors yield an equilibrium Quinault ~~glacier~~ Glacier at its terminal moraine position. As the Elwha glacier terminus (grey line) advances into the narrow section of the valley (distance of approximately 23 to 56 km shown on left axis) just before 3000 years into the simulation, the ice thickness (black line) increases rapidly, initiating an ice-elevation feedback.

435 Upon reaching the other side of the valley notch, the glacier reaches a state of equilibrium, where the rates of accumulation and ablation are roughly equal. It is important to note that this ice-elevation feedback is not observed in all climate simulations

but is more likely to occur in cooler and drier conditions, as well as in basins with valley geometries similar to that of the Elwha.

440 3.3 Discussion of flowline model results

Our findings indicate that the Elwha ~~glacier~~ Glacier model experiences an ice-elevation feedback that is associated with the geometry of the basin. The initiation of the feedback occurs when the glacier advances into the narrow section of the valley (notch) where it begins to thicken (Figure 6). The Quinault ~~basin~~ Valley also has a narrow segment ~~of the valley~~ in the middle of the basin; therefore, we expect to see the occurrence of a similar ice-elevation feedback in this valley. To investigate this possibility, we ran a set of models with an initially small Quinault ~~glacier~~ Glacier. In some simulations, this glacier grew large enough to advance through the narrowing of the valley. It thickened and extended, demonstrating an ice-elevation feedback similar to that we observed in the Elwha simulations.

The geometry of the basins is not the only control on the glacier extent. We ran a set of simulations switching the basin geometry. That is, we ran the Quinault climate over the Elwha ~~basin~~ Valley geometry and vice versa. The Elwha ~~glacier~~ Glacier was consistently large when given Quinault precipitation rates. The Quinault ~~glacier~~ Glacier ablated away or grew large when given the Elwha precipitation rates. This indicates that the contrast in precipitation amount, rather than the ~~basin~~ valley morphology, is the main cause of different extent of the Quinault ~~glacier~~ Glacier and Elwha ~~glacier~~ Glacier in our models. This finding also suggests that if precipitation gradients were weaker in the past, then they would not be sufficient to explain the observed difference in glacier extent.

445 Assuming that geologic mapping of the Elwha ~~basin~~ Valley has correctly identified the limited extent of recent glaciation, we can interpret our results as demonstrating that precipitation gradients are sufficient to explain differences in glacier extent if the past climate was at the warm and wet end of the range of paleoclimate estimates. However, the ~~basin~~ valley geometry and sensitivity of the Elwha ~~glacier~~ Glacier to climate variability within a plausible range suggests that the possibility of large-scale glaciation of the ~~basin~~ valley during the Quaternary should be considered.

460 In our model we have neglected other spatially variable surface processes that could have influenced the extent of the Elwha ~~glacier~~Glacier. Specifically, we did not account for the separate influences that precipitation-type, cloudiness, humidity, and sublimation would have on glacier accumulation and melt. In the model, we did not discriminate between different types of precipitation. All precipitation was considered snow. Rain will not contribute to glacier mass gain. If a significant portion of the precipitation falls as rain, then we are overestimating accumulation. We expect that the majority of precipitation at the 465 last glacial maximum is snow because we expect a seasonal shift in temperature similar to the present which brings winter temperatures at sea level to within a few degrees of freezing and about 80% of modern precipitation is during the cool season. However, at the lowest elevations and during the warm season rain likely occurred ~~at the last glacial maximum~~during the early Wisconsin glacial advance. The larger precipitation totals in the Quinault suggest that this effect could be more important for this glacier than for the Elwha. Cloudiness modulates the amount of solar radiation that reaches a glacier's surface. We expect 470 that the same physics that creates the rain shadow should produce coherent spatial patterns in cloudiness in the Olympic Mountains. Clouds form on the windward side of the range due to orographic lifting, and then dissipate when they descend on the leeward side of the mountain range (Roe, 2005). During some precipitation events, clouds are observed to decrease in elevation and water content rapidly near the divide between the Quinault and Elwha ~~basins~~Valleys (Zagrodnik et al., 2019). If the Elwha ~~valley~~Valley is less cloudy than the Quinault Valley, we expect that more solar radiation would increase local 475 air temperatures and enhance glacier melt (Huss et al., 2009). Additionally, there could be spatial patterns in humidity that influence glacier mass balance. If the Elwha ~~valley~~Valley is systematically less humid, we expect that the lapse rate should be larger than in the wetter Quinault Valley. Descending air flow in the lee of the mountain range could contribute to decreased humidity and increased lapse rate in the Elwha ~~valley~~Valley relative to the Quinault.

We conducted a small number of experiments to determine the sensitivity of the modelled Elwha ~~glacier~~Glacier to 480 our choice for the melt factor. For the simulation shown in Figure 6, if we increase the melt factor slightly from 0.65 m yr^{-1} ~~$^{\circ}\text{C}^{-1}$~~ to 0.75 m yr^{-1} ~~$^{\circ}\text{C}^{-1}$~~ the Elwha glacier remains small. The melt factor for Blue Glacier, on the west side of the Olympic Mountains, was estimated using glacier area change and PRISM-based temperature and precipitation data (Fountain et al., 2022). Field measurements could constrain the melt factor in the eastern Olympics to assess the potential for enhanced melt in the Elwha relative to the Quinault. Future work could establish if climatological variability in cloudiness is equivalent to

485 this degree of difference in the melt factor relative to the Quinault. A role for lapse-rate variability could also be explored. Additionally, a more sophisticated glacier model could be used for two-dimensional simulations that would depict the [basin valley](#) geometry more specifically and include two-dimensional spatial variability in precipitation and aspect-related melting. Our flowline model captures variability in the direction of the steepest precipitation gradients, but neglects variability across the valleys that may be important, especially for spatially variable drivers of ablation, such as topographic shading.

490 Although we defend our analysis of the modern climate and our reasonable assumption that the past spatial gradient in precipitation in the Olympics was similar to that observed today, it is important to acknowledge that precipitation events during the last glacial period may not have any modern climate [analogsanalogues](#). One way to assess this possibility would be to use a forecasting model like WRF with boundary conditions pulled from global circulation models of the last glacial maximum. These simulations could reveal different mechanisms of precipitation variability than those that operate today.

495 Any assessment of erosion by glaciers on the Olympic Peninsula requires a clear picture of glacier extent through time. To model glacial erosion in the Quinault [basin-Valley](#) we should simulate the advance and retreat of the Quinault [glacier Glacier](#) through a glacial cycle and integrating basal sliding. The spatial pattern of glacier sliding within the Quinault could be compared to gradients in exhumation across the range and fluvial erosion within the Clearwater [valleyValley](#). Glacial erosion of the Elwha [valley-Valley](#) depends on the extent of ice. If the Elwha [glacierGlacier](#) remained small during the last glacial episode, then glacial erosion was limited and perhaps fluvial erosion was a stronger control on landscape-scale erosion on the lee side of the range. However, if an expansive and thick glacier ever occupied the Elwha [valleyValley](#), our models suggest it was very fast flowing and erosive – more so than the Quinault [glacierGlacier](#).

500 Future field work could improve understanding of the past extent of the Elwha [glacierGlacier](#). One target would be to find terminal moraines associated with the Elwha [valley-Valley](#) glacier during the most recent glaciation, presumably located up valley from the mapped quadrangles near the valley mouth. If these are above the notch, they would improve our confidence in the model simulations. In the lower Elwha [valleyValley](#), drill cores could be recovered and analysed to identify the extent of locally derived (alpine) till. It is possible that alpine till from previous glaciations could be identified from the mineralogy and chemistry – allowing us to constrain past glacier extent.

510 4 Conclusions

We set out to understand the factors influencing the asymmetry in glacier extent between the Quinault and Elwha ~~basins-Valleys~~ of the Olympic Mountains. To this end, we characterized the modern precipitation patterns, and assessed the potential influence of various climate indices on these patterns. We calculated ratios of average precipitation in the Elwha basin relative to the Quinault basin using three different datasets: PRISM data (2020), river discharge data (USGS 2022a, 2022b), and WRF model output. We conclude that the long-term ratio of average precipitation between the two basins likely remained at-or-above 0.50 (<100% more precipitation in the Quinault than the Elwha) during recent glaciations. We find no evidence of atmospheric or climatic influences, such as weather regimes, that would cause a more severe precipitation gradient in a glacial climate. Therefore, we make the conservative assumption that modern climate is a good representation of past spatial gradients in precipitation.

520 To better understand the response of glaciers in the region to climate, we employed a one-dimensional glacier flowline model simulating the response of glaciers in both ~~basins-valleys~~ to a range of climate states. This included variations in sea level temperature (T_{SL}) and the glacial drying factor (GDF). There exists a set of T_{SL} and GDF pairs within the expected paleoclimate range that produce an equilibrium ice margin in the Quinault ~~valley-Valley~~ at the position of the last glacial maximum terminal moraine. Over this same set of climate conditions, the Elwha ~~glacier-Glacier~~ showed extremely variable behaviour. Within the Quinault equilibrium climate range, a 1 °C change in temperature corresponded to an expansion of nearly 40 km in the Elwha ~~glacierGlacier~~. Further investigation revealed that this behaviour was related to the valley geometry of the Elwha ~~basinValley~~, with the glacier experiencing an ice-elevation feedback as it advanced into the narrowing section of the valley and thickened. This ice-elevation feedback occurs in both the Quinault and Elwha ~~basinsValleys~~, but is more pronounced in cooler and drier climates. In general, our model was able to reproduce the observed extent of glaciers in warmer 530 climates with higher rates of precipitation. The occurrence of an ice-elevation feedback in both ~~basinsvalleys~~, which was linked to the valley geometry, highlights the importance of considering local topography in studies of glacier dynamics.

Our model focused on glacier asymmetry due to the asymmetry in precipitation and did not consider differences in the efficiency of melting across the Olympic mountains. Our parameter tests suggest that if melt efficiency was even slightly greater in the Elwha relative to the Quinault, it could have been a significant factor limiting the growth of the Elwha ~~glacier~~

535 [Glacier](#) during the last glacial episode. Further investigation with the flowline model could examine the impact of spatial
variability in glacier melting.

Overall, we find that spatially variable precipitation influences glacier extent, and that the sensitivity of glaciers to
climate varies in space for the Olympic Mountains. This conclusion has implications for other regions with spatial gradients
in precipitation including, the Andes Mountains, the European Alps, the Southern Alps, and Central Asia. Specifically, we
540 suggest that glacier sensitivity to climate likely varies across precipitation gradients forced by topography. Furthermore, the
local spatial variability in the relationship between glaciers and climate complicates a prediction of the response of glaciers to
ongoing anthropogenic climate change as small changes in climate may have different impacts for different glaciers within the
same mountain range. Considering the complex interplay between local topography and climate, it is necessary to take into
account these spatial gradients in future climate projections for accurate predictions of individual glacier behaviour in
545 mountainous regions.

Code and Data Availability

~~Data related to the climate analysis and MATLAB code of the glacier flowline model including input data are available at
<https://doi.org/10.4311/hs/a908fe06d4784684b68452d21efae69b>. A MATLAB version of the glacier flowline model can be
550 accessed through a hydroshare resource: <https://www.hydroshare.org/resource/fe28143081434b0d90f8effe88e1bfff/> (last
access: 10 February 2023).~~

~~Data Availability~~

~~Data related to the climate analysis of the Olympic Mountains can be accessed through a hydroshare resource:
555 <https://www.hydroshare.org/resource/0ae232525f984007ba96e1762f21dd3d/> (last access: 10 February 2023).~~

Author Contributions

AM and AA wrote the paper. AA initiated the study. RC supplied WRF model output and developed code to analyse
atmospheric weather balloon soundings. GR supplied the flowline model code. AM and AA performed the analysis of the

560 climate and performed the flowline model simulations. All authors checked and revised the text and the figures of the paper
and contributed to the ideas developed in this study.

Competing Interests

The authors declare that they have no conflict of interest.

565

Acknowledgements

We are grateful to Cristian Proistosescu and [BLANK] for their constructive comments on this manuscript.

References

570 Adams, B. A. and Ehlers, T. A.: Tectonic controls of Holocene erosion in a glaciated orogen, *Earth Surface Dynamics*, 6, 595–
610, <https://doi.org/10.5194/esurf-6-595-2018>, 2018.

Anders, A. M., Roe, G. H., Durran, D. R., and Minder, J. R.: Small-Scale Spatial Gradients in Climatological Precipitation on
the Olympic Peninsula, *Journal of Hydrometeorology*, 8, 1068–1081, <https://doi.org/10.1175/JHM610.1>, 2007.

575 Anders, A. M., Mitchell, S. G., and Tomkin, J. H.: Cirques, peaks, and precipitation patterns in the Swiss Alps: Connections
among climate, glacial erosion, and topography, *Geology*, 38, 239–242, <https://doi.org/10.1130/G30691.1>, 2010.

Baccus, W. D., A Park Interpreter's Guide to the Climate of Hurricane Ridge, Olympic National Park, Climate Summary for
Water Years 2000 to 2017, Natural Resources Report NPS/NCCN/NRR 2018/1741, U.S. Department of the Interior, Fort
580 Collins, Colorado, accessed at: <http://npshistory.com/publications/olym/nrr-2018-1714.pdf> on 5/2/23, 2018.

Barnston, A. G. and Livezey, R. E.: Classification, Seasonality and Persistence of Low-Frequency Atmospheric Circulation
Patterns, *Monthly Weather Review*, 115, 1083–1126, [https://doi.org/10.1175/1520-
0493\(1987\)115<1083:CSAPOL>2.0.CO;2](https://doi.org/10.1175/1520-0493(1987)115<1083:CSAPOL>2.0.CO;2), 1987.

585

Braithwaite, R. J. and Zhang, Y.: Sensitivity of mass balance of five Swiss glaciers to temperature changes assessed by tuning
a degree-day model, *Journal of Glaciology*, 46, 7–14, <https://doi.org/10.3189/172756500781833511>, 2000.

- Braithwaite, R. J., Zhang, Y., & Raper, S. C. B.: Temperature sensitivity of the mass balance of mountain glaciers and ice caps as a climatological characteristic. *Zeitschrift für Gletscherkunde und Glazialgeologie*, 38(1), 35-61, 2003.
- Brandon, M. T., Roden-Tice, M. K., and Garver, J. I.: Late Cenozoic exhumation of the Cascadia accretionary wedge in the Olympic Mountains, northwest Washington State, *GSA Bulletin*, 110, 985–1009, [https://doi.org/10.1130/0016-7606\(1998\)110<0985:LCEOTC>2.3.CO;2](https://doi.org/10.1130/0016-7606(1998)110<0985:LCEOTC>2.3.CO;2), 1998.
- [Budd, W. F., P. L. Keage, and N. A. Blundy: Empirical studies of ice sliding. *Journal of Glaciology*, 23\(89\), 157-170. https://doi.org/10.3189/S0022143000029804, 1979.](https://doi.org/10.3189/S0022143000029804)
- Cao, Q., Painter, T. H., Currier, W. R., Lundquist, J. D., and Lettenmaier, D. P.: Estimation of Precipitation over the OLYMPEX Domain during Winter 2015/16, *Journal of Hydrometeorology*, 19, 143–160, <https://doi.org/10.1175/JHM-D-17-0076.1>, 2018.
- [Climate Explorer. https://climexp.knmi.nl/start.cgi, accessed 20/12/2022.](https://climexp.knmi.nl/start.cgi)
- Conrick, R. and Mass, C. F.: An Evaluation of Simulated Precipitation Characteristics during OLYMPEX, *Journal of Hydrometeorology*, 20, 1147–1164, <https://doi.org/10.1175/JHM-D-18-0144.1>, 2019b.
- Conrick, R. and Mass, C. F.: Evaluating Simulated Microphysics during OLYMPEX Using GPM Satellite Observations, *Journal of the Atmospheric Sciences*, 76, 1093–1105, <https://doi.org/10.1175/JAS-D-18-0271.1>, 2019a.
- Daly, C., Slater, M. E., Roberti, J. A., Laseter, S. H., and Swift Jr, L. W.: High-resolution precipitation mapping in a mountainous watershed: ground truth for evaluating uncertainty in a national precipitation dataset, *International Journal of Climatology*, 37, 124–137, <https://doi.org/10.1002/joc.4986>, 2017.
- Daly, C., Halbleib, M., Smith, J. I., Gibson, W. P., Doggett, M. K., Taylor, G. H., Curtis, J., and Pasteris, P. P.: Physiographically sensitive mapping of climatological temperature and precipitation across the conterminous United States, *International Journal of Climatology* 28, 2031–2064, <https://doi.org/10.1002/joc.1688>, 2008.
- DeBeer, C. M., and Sharp, M. J.: Topographic influences on recent changes of very small glaciers in the Monashee Mountains, British Columbia, Canada, *Journal of Glaciology*, 55(192), 691-700, <https://doi.org/10.3189/002214309789470851>, 2009.

Duda, J. J., Warrick, J. A., and Magirl, C. S.: Coastal Habitats of the Elwha River, Washington: Biological and Physical Patterns and Processes Prior to Dam Removal, U.S. Department of the Interior, U.S. Geological Survey, 276 pp., 2011.

625

~~Easterbrook, D. J.: [Stratigraphy and chronology of Quaternary deposits of the Puget Lowland and Olympic Mountains of Washington and the Cascade Mountains of Washington and Oregon](#), *Quaternary Science Reviews*, 5, 145-159. 1986.~~

Fountain, A. G., Gray, C., Glenn, B., Menounos, B., Pflug, J., and Riedel, J. L.: Glaciers of the Olympic Mountains, Washington—The Past and Future 100 Years, *Journal of Geophysical Research: Earth Surface*, 127, e2022JF006670, <https://doi.org/10.1029/2022JF006670>, 2022.

630

GLIMS Glacier Database, Version 1. Boulder Colorado, USA. NASA National Snow and Ice Data Center Distribute Active Archive Center. DOI: <https://doi.org/10.7265/N5V98602>, ~~accessed 15/4/23~~~~4/15/23~~

635

Heusser, C. J., Heusser, L. E., and Peteet, D. M.: Humptulips revisited: a revised interpretation of Quaternary vegetation and climate of western Washington, USA, *Palaeogeography, Palaeoclimatology, Palaeoecology*, 150, 191–221, [https://doi.org/10.1016/S0031-0182\(98\)00225-9](https://doi.org/10.1016/S0031-0182(98)00225-9), 1999.

~~640 [Organization and structure of clouds and precipitation on the mesoscale and microscale in cyclonic storms: https://agupubs.onlinelibrary.wiley.com/doi/abs/10.1029/RG016i004p00741](#), last access: 3 January 2023.~~

Hobbs, P.V.: Organization and structure of clouds and precipitation on the mesoscale and microscale in cyclonic storms, *Reviews of Geophysics* 16(4), 741-755, <https://doi.org/10.1029/RG016i004p00741>, 1978.

645

Houze, R. A., McMurdie, L. A., Petersen, W. A., Schwaller, M. R., Baccus, W., Lundquist, J. D., Mass, C. F., Nijssen, B., Rutledge, S. A., Hudak, D. R., Tanelli, S., Mace, G. G., Poellot, M. R., Lettenmaier, D. P., Zagrodnik, J. P., Rowe, A. K., DeHart, J. C., Madaus, L. E., Barnes, H. C., and Chandrasekar, V.: The Olympic Mountains Experiment (OLYMPEX), *Bulletin of the American Meteorological Society*, 98, 2167–2188, <https://doi.org/10.1175/BAMS-D-16-0182.1>, 2017.

650

Huss, M., Funk, M., and Ohmura, A.: Strong Alpine glacier melt in the 1940s due to enhanced solar radiation, *Geophysical Research Letters*, 36, <https://doi.org/10.1029/2009GL040789>, 2009.

Kessler, M. A., Anderson, R. S., and Stock, G. M.: Modeling topographic and climatic control of east-west asymmetry in Sierra Nevada glacier length during the Last Glacial Maximum, *Journal of Geophysical Research: Earth Surface*, 111, <https://doi.org/10.1029/2005JF000365>, 2006.

655

Marshall, K. J.: Expanded Late Pleistocene Glacial Chronology for Western Washington, U.S. >A. And the Wanaka-Hawea Basin, New Zealand, Using Luminescence Dating of Glaciofluvial Outwash, M.S. Thesis, Idaho State University, Pocatello, ID, USA, 357 pp., <https://isu.app.box.com/v/Marshall-2013>, 2013.

Michel, L., Ehlers, T. A., Glotzbach, C., Adams, B. A., and Stübner, K.: Tectonic and glacial contributions to focused exhumation in the Olympic Mountains, Washington, USA, *Geology*, 46, 491–494, <https://doi.org/10.1130/G39881.1>, 2018.

665 Michelangeli, P.-A., Vautard, R., and Legras, B.: Weather Regimes: Recurrence and Quasi Stationarity, *Journal of the Atmospheric Sciences*, 52, 1237–1256, [https://doi.org/10.1175/1520-0469\(1995\)052<1237:WRRAS>2.0.CO;2](https://doi.org/10.1175/1520-0469(1995)052<1237:WRRAS>2.0.CO;2), 1995.

Minder, J. R., Durran, D. R., Roe, G. H., and Anders, A. M.: The climatology of small-scale orographic precipitation over the Olympic Mountains: Patterns and processes, *Quarterly Journal of the Royal Meteorological Society*, 134, 817–839, 670 <https://doi.org/10.1002/qj.258>, 2008.

Nino3.4 index based on NOAA ERSSTv5: https://climexp.knmi.nl/data/iersst_nino3.4a.dat, accessed 20/12/22 last access: 20 December 2022

675 Oerlemans, J.: Climate Sensitivity of Franz Josef Glacier, New Zealand, as Revealed by Numerical Modeling, *Arctic and Alpine Research*, 29, 233–239, <https://doi.org/10.2307/1552052>, 1997.

Oerlemans, J., Anderson, B., Hubbard, A., Huybrechts, P., Jóhannesson, T., Knap, W. H., Schmeits, M., Stroeven, A. P., van de Wal, R. S. W., Wallinga, J., and Zuo, Z.: Modelling the response of glaciers to climate warming, *Climate Dynamics*, 14, 680 267–274, <https://doi.org/10.1007/s003820050222>, 1998.

~~Oltmanns, M., Straneo, F., and Tedesco, M.: Increased Greenland melt triggered by large-scale, year-round cyclonic moisture intrusions, *The Cryosphere*, 13, 815–825, <https://doi.org/10.5194/te-13-815-2019>, 2019.~~

685 Pacific/North American Pattern (PNA): https://climexp.knmi.nl/data/icpc_pna.dat, accessed 20/12/22 last access: 20 December 2022

Pacific Decadal Oscillation index (PDO): <https://climexp.knmi.nl/data/ipdo.dat>, last access: 20 December 2022 accessed 20/12/22

690

Pazzaglia, F. J. and Brandon, M. T.: A Fluvial Record of Long-term Steady-state Uplift and Erosion Across the Cascadia Forearc High, Western Washington State, *American Journal of Science*, 301, 385–431, <https://doi.org/10.2475/ajs.301.4-5.385>, 2001.

695 Polenz, M., Wegmann, K. W., and Schasse, H. W.: Geologic Map of the Elwha and Angeles Point 7.5-minute Quadrangles, Clallam County, Washington, https://www.dnr.wa.gov/publications/ger_ofr2004-14_geol_map_elwha_angelespoint_24k.pdf, 2004.

PRISM 30-Year Normals: <https://prism.oregonstate.edu/normals/>, ~~last access: 05-October-2020~~ accessed 5/10/20

700

Purnell, D. J. and Kirshbaum, D. J.: Synoptic Control over Orographic Precipitation Distributions during the Olympics Mountains Experiment (OLYMPEX), *Monthly Weather Review*, 146, 1023–1044, <https://doi.org/10.1175/MWR-D-17-0267.1>, 2018.

705 Rasmussen, L. A., Conway, H., and Hayes, P. S. : The accumulation regime of Blue Glacier, U.S.A., 1914-96: *Journal of Glaciology*, 46 (153), 326-334. doi:10.3189/172756500781832846, 2000.

Riedel, J. L., Wilson, S., Baccus, W., Larrabee, M., Fudge, T. J., and Fountain, A.: Glacier status and contribution to streamflow in the Olympic Mountains, Washington, USA, *Journal of Glaciology*, 61, 8–16, <https://doi.org/10.3189/2015JoG14J138>, 2015.

710

Robertson, A. W. and Ghil, M.: Large-Scale Weather Regimes and Local Climate over the Western United States, *Journal of Climate*, 12, 1796–1813, [https://doi.org/10.1175/1520-0442\(1999\)012<1796:LSWRAL>2.0.CO;2](https://doi.org/10.1175/1520-0442(1999)012<1796:LSWRAL>2.0.CO;2), 1999.

Robertson, A. W. and Metz, W.: Transient-Eddy Feedbacks Derived from Linear Theory and Observations, *Journal of the Atmospheric Sciences*, 47, 2743–2764, [https://doi.org/10.1175/1520-0469\(1990\)047<2743:TEFDL>2.0.CO;2](https://doi.org/10.1175/1520-0469(1990)047<2743:TEFDL>2.0.CO;2), 1990.

715

Roe, G. H.: ~~OROGRAPHIC-Orographic Precipitation~~PRECIPITATION, *Annual- Reviews of- Earth and Planetary- Sci.*, 33, 645–671, <https://doi.org/10.1146/annurev.earth.33.092203.122541>, 2005.

720 Roe, G. H.: What do glaciers tell us about climate variability and climate change?, *Journal of Glaciology*, 57, 567–578, <https://doi.org/10.3189/002214311796905640>, 2011.

- Roe, G. H. and O'Neal, M. A.: The response of glaciers to intrinsic climate variability: observations and models of late-Holocene variations in the Pacific Northwest, *Journal of Glaciology*, 55, 839–854, <https://doi.org/10.3189/002214309790152438>, 2009.
- Rupper, S. and Roe, G.: Glacier Changes and Regional Climate: A Mass and Energy Balance Approach, *Journal of Climate*, 21, 5384–5401, <https://doi.org/10.1175/2008JCLI2219.1>, 2008.
- Rutledge, S. A. and Ciesielski, P.: Quality--Control of Upper-Air Soundings for OLYMPEX, https://ghrc.nsstc.nasa.gov/pub/fieldCampaigns/gpmValidation/olympex/upa_soundings/doc/OLYMPEX_sonde_qc.pdf, 2016.
- Serreze, M. C., Clark, M. P., Armstrong, R. L., McGinnis, D. A., and Pulwarty, R. S.: Characteristics of the western United States snowpack from snowpack telemetry (SNO^{TEL}) data, *Water Resources Research*, 35, 2145–2160, <https://doi.org/10.1029/1999WR900090>, 1999.
- Siler, N., Roe, G., and Durran, D.: On the Dynamical Causes of Variability in the Rain-Shadow Effect: A Case Study of the Washington Cascades., *Journal of Hydrometeorology*, 14, 122-139, DOI: 10.1175/JHM-D-12-045.1, 2012.
- Skamarock, William C., Joseph B. Klemp, Jimy Dudhia, David O. Gill, Dale M. Barker, Wei Wang, and Jordan G. Powers. "A description of the Advanced Research WRF version 3." NCAR Technical note-475+ STR. <http://dx.doi.org/10.5065/D68S4MVH>, 2008.
- Staley, A.E.: Glacial Geomorphology and ~~ehronology~~-Chronology of the Quinault Valley, Washington and Broader ~~evidence~~ Evidence of ~~marine~~Marine isotope ~~Isotope stages~~-Stages 4 and 2 ~~glaciation~~-Glaciation across ~~Across~~ the ~~northwestern~~-Northwestern United States, M.S. Thesis, Idaho State University, Pocatello, ID, USA., 100pp., <https://isu.app.box.com/v/Staley-2015>, 2015.
- Stuart-Smith, R. F., Roe, G. H., Li, S., & Allen, M. R.: Increased outburst flood hazard from Lake Palcacocha due to human-induced glacier retreat, *Nature Geoscience*, 14(2), 85-90, 2001.
- Tabor, R. W. and Cady, W. M.: The Structure of the Olympic Mountains, Washington: Analysis of a Subduction Zone, U.S. Government Printing Office, 52 pp., 1978.

755

Formatted: Left

Formatted: Indent: Left: 0", First line: 0"

Thackray, G. D.: Extensive Early and Middle Wisconsin Glaciation on the Western Olympic Peninsula, Washington, and the Variability of Pacific Moisture Delivery to the Northwestern United States, *Quaternary Research*, 55, 257–270, <https://doi.org/10.1006/qres.2001.2220>, 2001.

760 Tropical/Northern Hemisphere Pattern (TNH): https://climexp.knmi.nl/data/icpc_tnh.dat, ~~last access: 20 December 2022~~ accessed 20/12/2022

~~US Geological Survey~~USGS, Water Resources Data, Elwha River: https://waterdata.usgs.gov/wa/nwis/monthly/?referred_module=sw&site_no=12045500&por_12045500_148527=1179104,00060,148527,1897-10,2021-01&format=rdb&date_format=YYYY-MM-DD&rdb_compression=value&submitted_form=parameter_selection_list, ~~last access: 20 December 2022~~ accessed 20/12/22, 2022a.

~~US Geological Survey, Water Resources Data~~USGS, Quinault River: https://waterdata.usgs.gov/nwis/monthly/?referred_module=sw&site_no=12039500&por_12039500_148486=1179001,00060,148486,1911-10,2020-09&format=rdb&date_format=YYYY-MM-DD&rdb_compression=value&submitted_form=parameter_selection_list, last access: 20 December 2022, 2022b.

775 Wagon, P., Sicart, J.-E., Berthier, E., and Chazarin, J.-P.: Wintertime high-altitude surface energy balance of a Bolivian glacier, Illimani, 6340 m above sea level, *Journal of Geophysical Research: Atmospheres*, 108, <https://doi.org/10.1029/2002JD002088>, 2003.

780 Western Regional Climate Center, RAWS data for Black Knob Washington, <https://raws.dri.edu/cgi-bin/rawMAIN.pl?waWBLA>, accessed 4/27/4/23.

Willett, S. D.: Orogeny and orography: The effects of erosion on the structure of mountain belts, *Journal of Geophysical Research: Solid Earth*, 104, 28957–28981, <https://doi.org/10.1029/1999JB900248>, 1999.

785 Zagrodnik, J. P., McMurdie, L. A., Houze, R. A., and Tanelli, S.: Vertical Structure and Microphysical Characteristics of Frontal Systems Passing over a Three-Dimensional Coastal Mountain Range, *Journal of the Atmospheric Sciences*, 76, 1521–1546, <https://doi.org/10.1175/JAS-D-18-0279.1>, 2019.

Formatted: Left

Formatted: Left